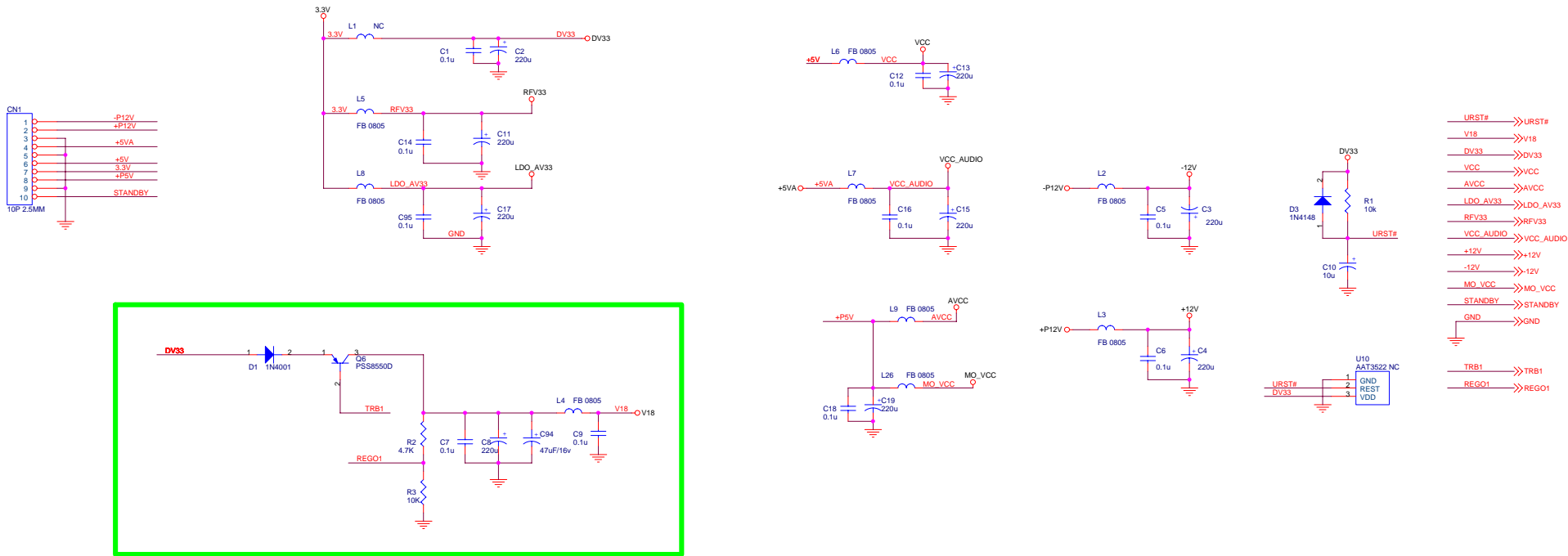
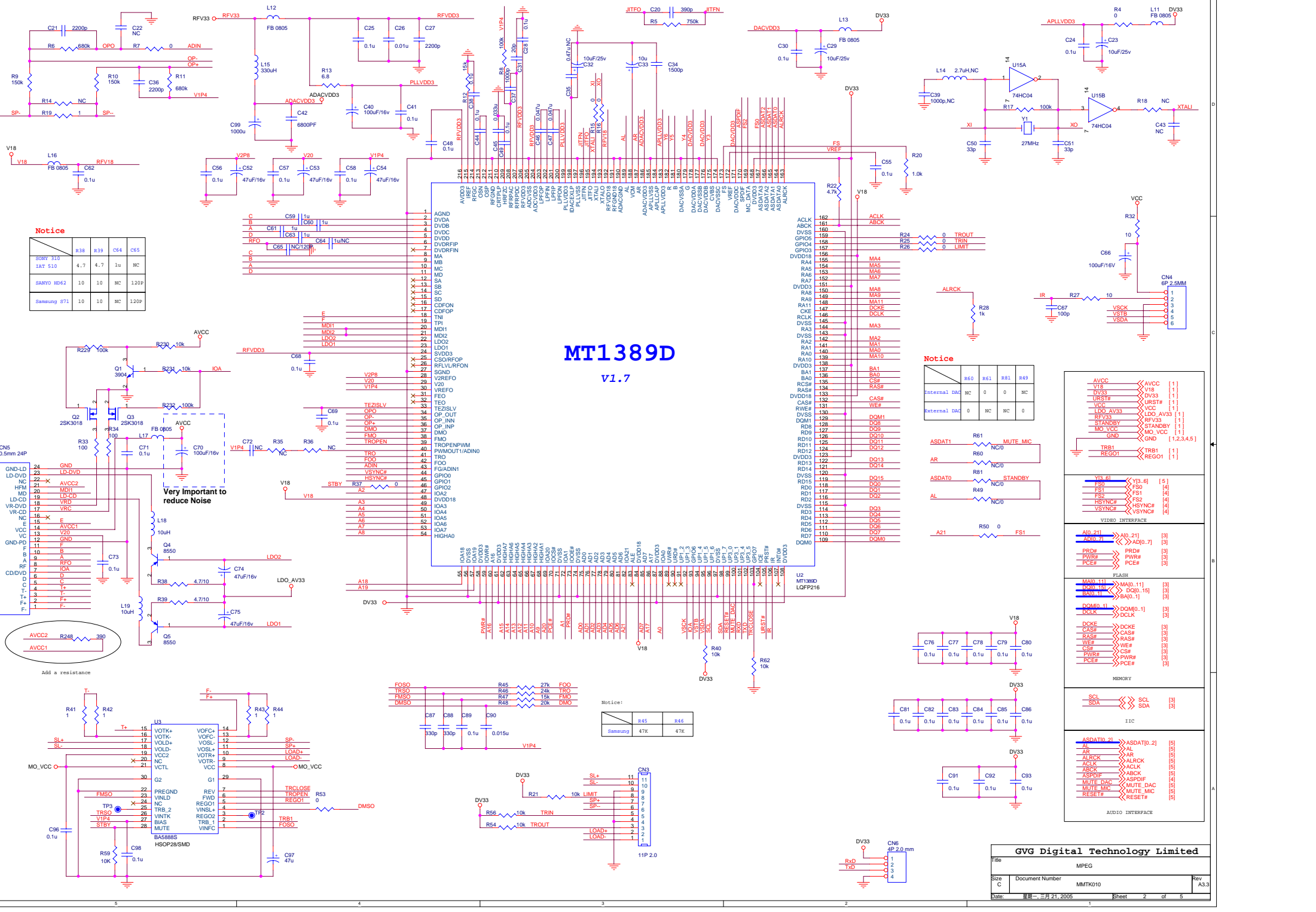


GVG DIGITAL
MMTK010 REV.A3.3

1	INDEX & POWER, RESET
2	RF / SERVO /MPEG - MT1389D
3	MEMORY - SDRAM, FLASH/EEPROM
4	VIDEO FILTER
5	AUDIO - CS4360, CS4340,AUDIO FILTER

NAME	TYPE	DEVICE
VCC	Digital 5V	SUPPLY
DV33	Digital 3.3V	MT1389E
RFV33	Servo 3.3V	MT1389E
LDO_AV33	Laser Diode 3.3V	
AVCC	RF 5V	PICKUP HEADER
V18	Digital 1.8V	MT1389E
SD33	Digital 3.3V	SDRAM
+12V	Audio +12V	OP AMP.
-12V	Audio -12V	OP AMP.
AVDD	Audio 5V	Audio DAC
DVDD	Audio 5V	Audio DAC





Notice

	R38	R39	C64	C65
ROHM 310	4.7	4.7	1u	NC
SANYO ND62	10	10	NC	120P
Samsung S71	10	10	NC	120P

MT1389D
V1.7

Notice

	R60	R61	R81	R49
Internal DAC	NC	0	0	NC
External DAC	0	NC	NC	0

AVCC	AVCC	[1]
V18	V18	[1]
DV33	DV33	[1]
URST#	URST#	[1]
VCC	VCC	[1]
LDO AV33	LDO AV33	[1]
RFV33	RFV33	[1]
STANDBY	STANDBY	[1]
MO VCC	MO VCC	[1]
GND	GND	[1,2,3,4,5]
TRB1	TRB1	[1]
REGO1	REGO1	[1]

V18_61	Y18_61	[5]
FS0	FS0	[1]
FS1	FS1	[4]
FS2	FS2	[4]
HSYNC#	HSYNC#	[4]
VSYN#	VSYN#	[4]
VSYN#	VSYN#	[4]

AIO_211	AIO_211	[3]
AIO_0_1	AIO_0_1	[3]
PRD#	PRD#	[3]
PWR#	PWR#	[3]
PCE#	PCE#	[3]

MA0_11	MA0_11	[3]
MA0_10	MA0_10	[3]
MA0_1	MA0_1	[3]
DOMD_11	DOMD_11	[3]
DCLK	DCLK	[3]

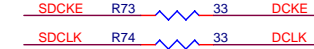
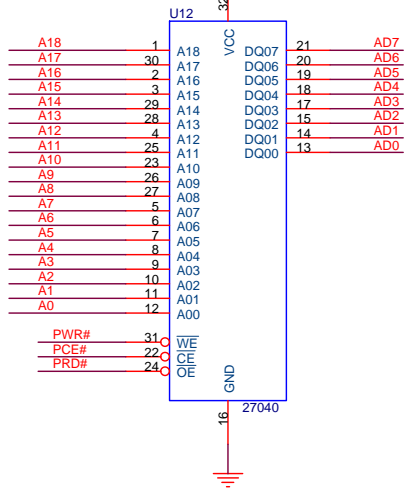
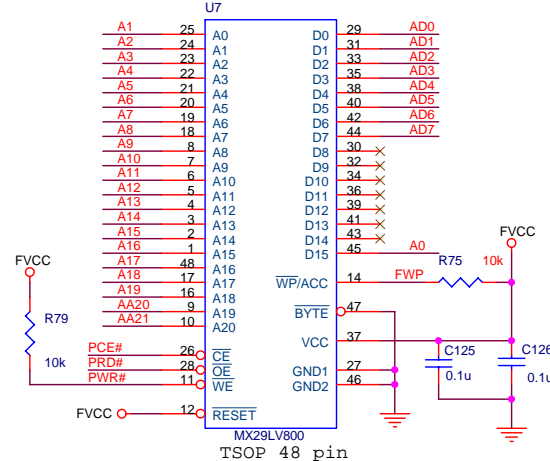
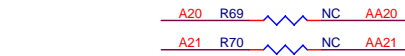
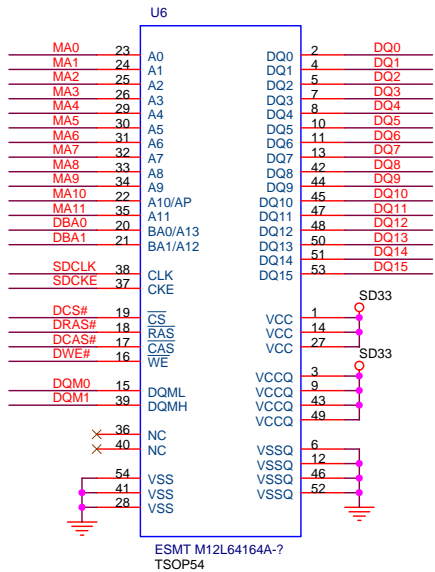
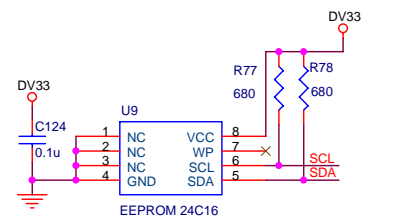
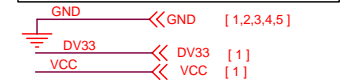
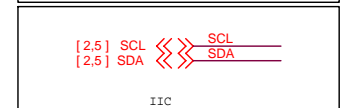
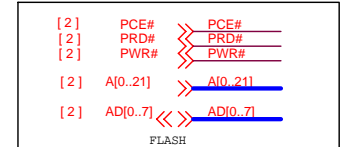
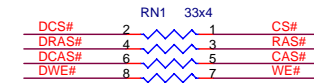
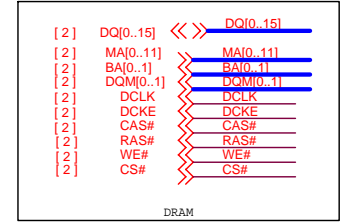
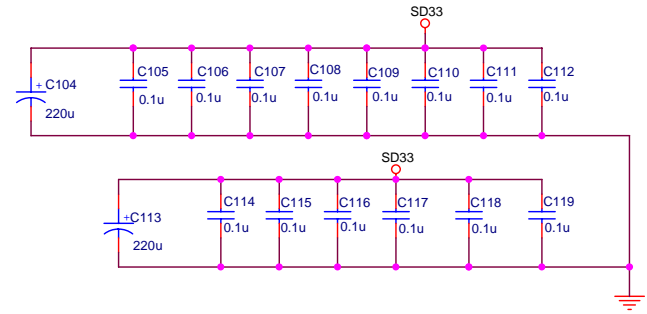
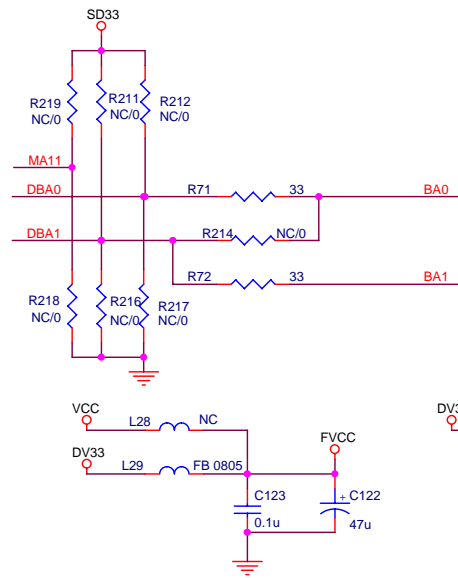
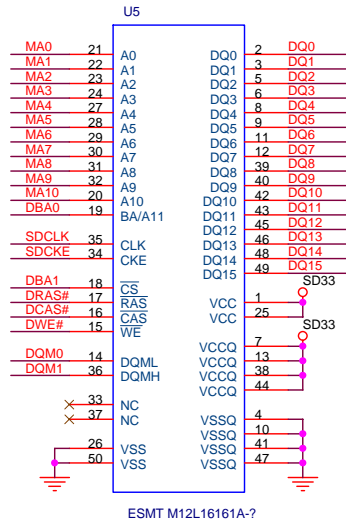
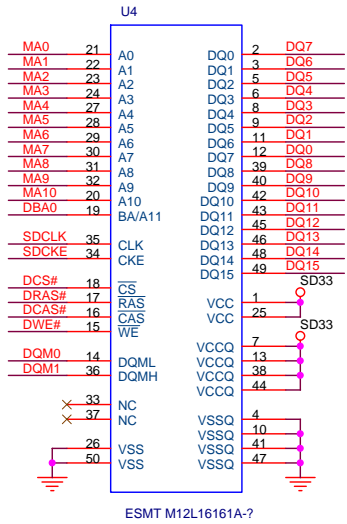
DCKE	DCKE	[3]
CAS#	CAS#	[3]
RAS#	RAS#	[3]
WE#	WE#	[3]
CS#	CS#	[3]
PWR#	PWR#	[3]
PCE#	PCE#	[3]

SCL	SCL	[3]
SDA	SDA	[3]

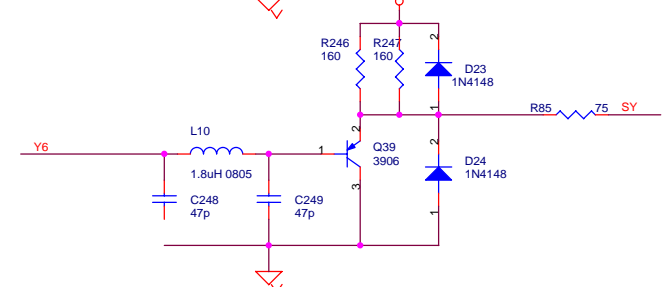
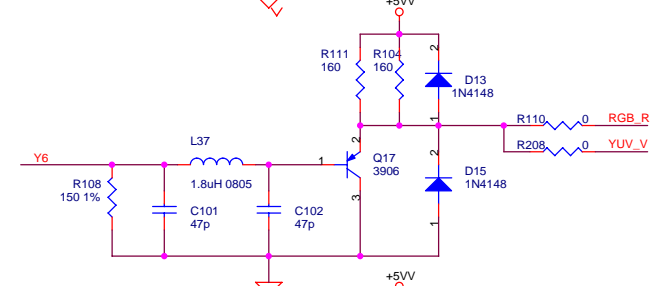
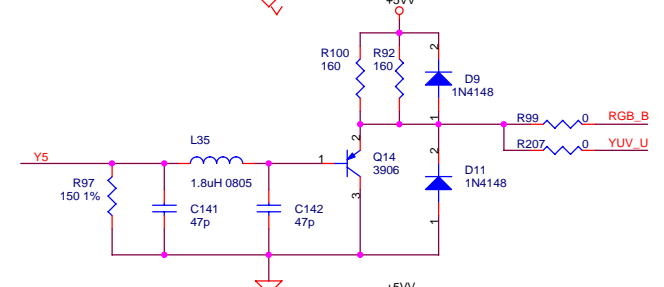
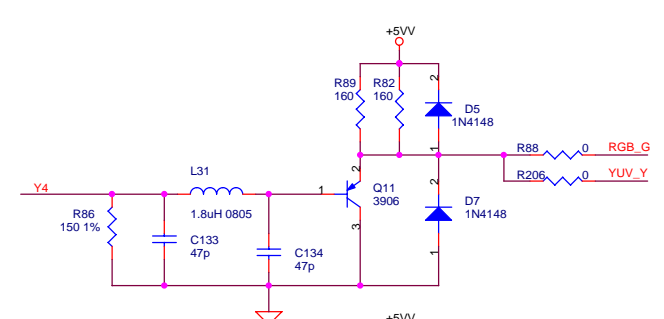
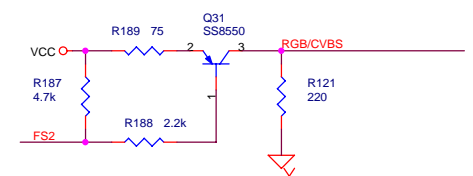
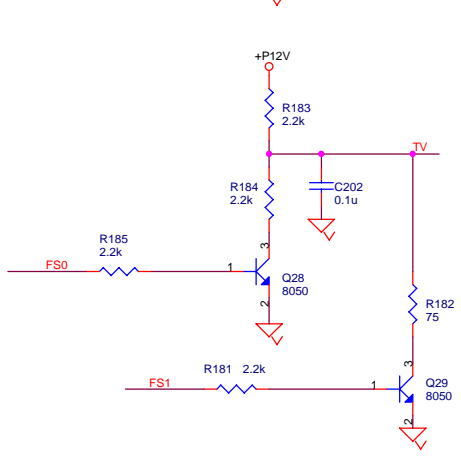
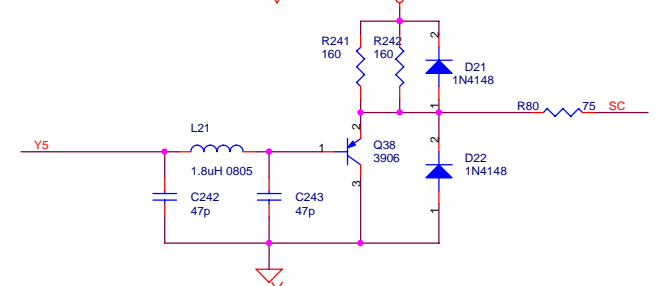
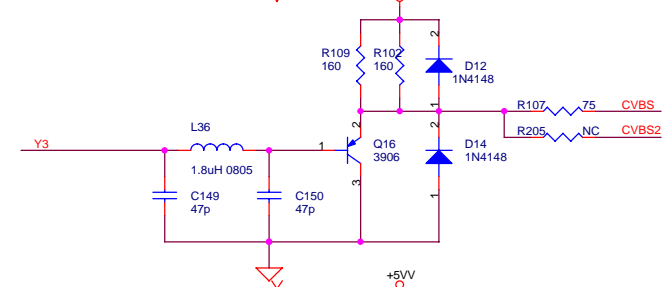
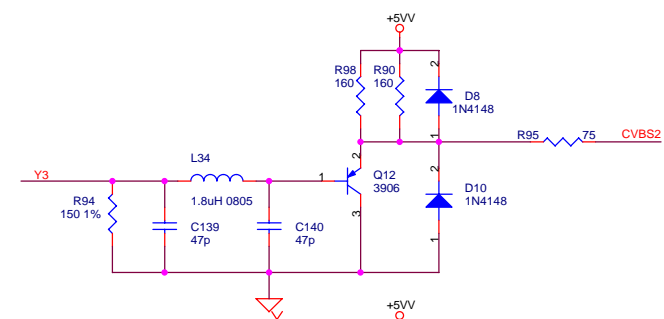
ASDAT0_21	ASDAT0_21	[5]
AL	AL	[5]
ALRCK	ALRCK	[5]
AR	AR	[5]
ACLK	ACLK	[5]
ABCK	ABCK	[5]
ASPDIF	ASPDIF	[5]
MUTE_DAC	MUTE_DAC	[5]
MUTE_MIC	MUTE_MIC	[5]
RESET#	RESET#	[5]

GVG Digital Technology Limited

File	MPEG	Rev	A3.3
Size	Document Number	MMTK1010	
Date	2010-03-21	Sheet	2 of 5

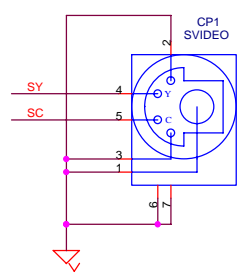
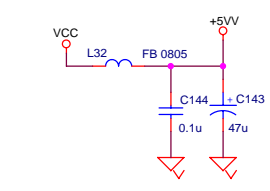


GVG Digital Technology Limited			
Title			
MEMORY - SDRAM, FLASH/EEPROM			
Size	Document Number	MMTK010	Rev
B			A3.3
Date:	星期一, 三月 21, 2005	Sheet	3 of 5

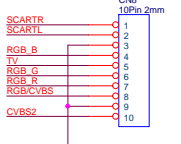
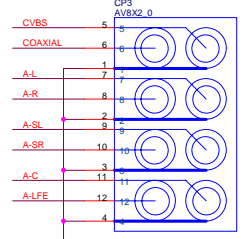
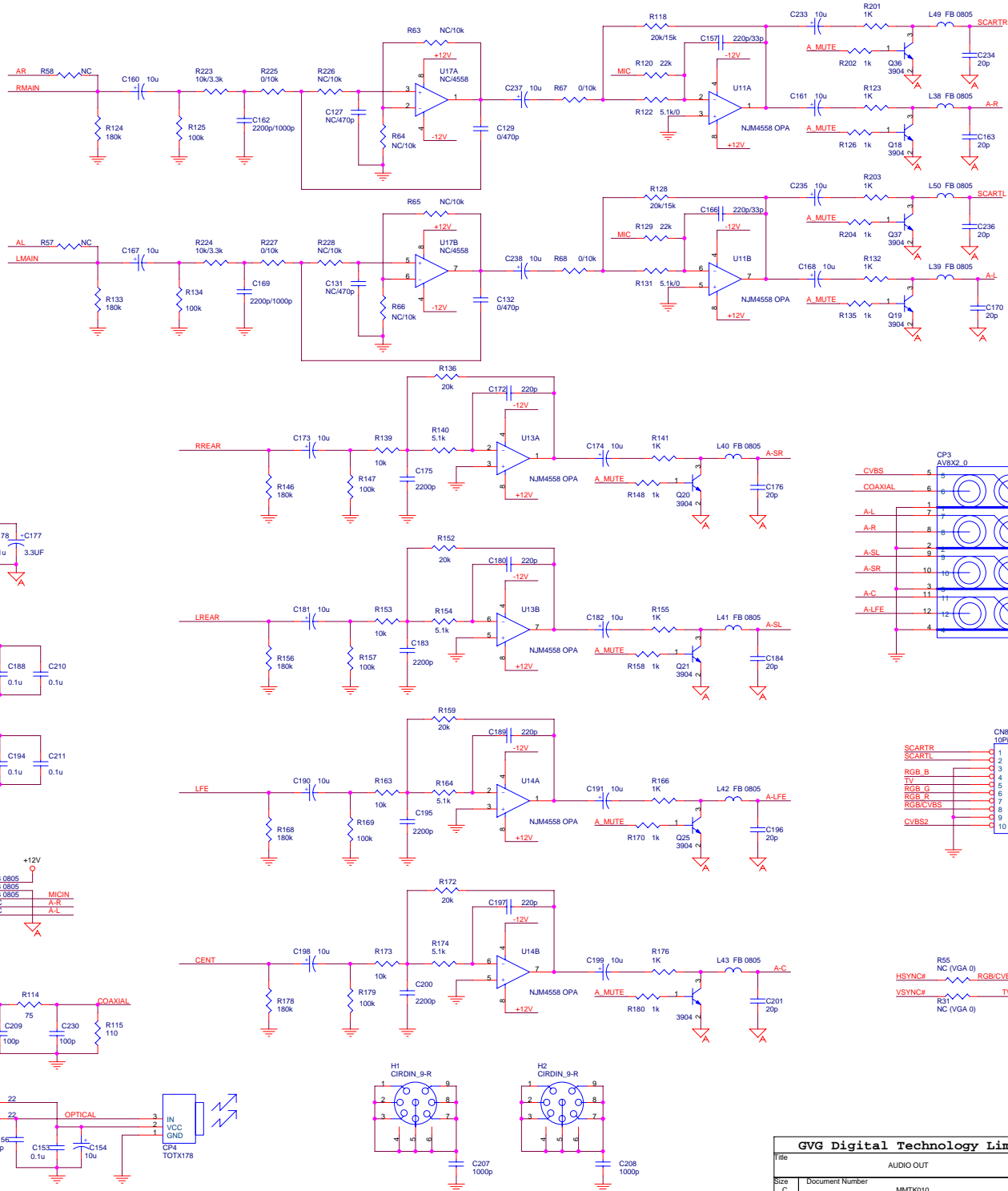
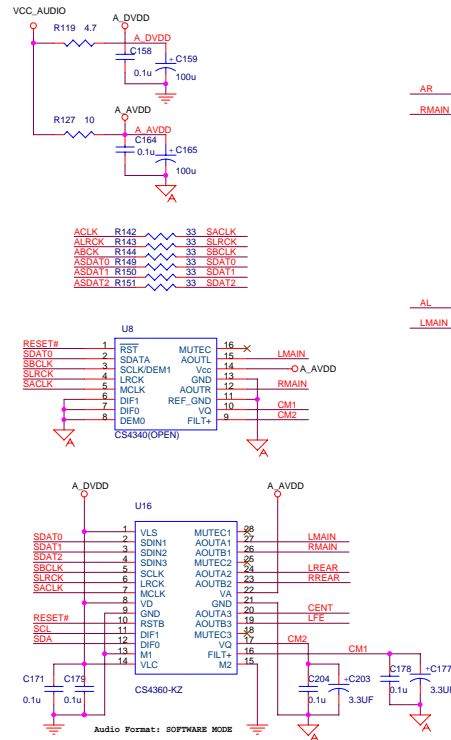


- VCC << VCC [1]
- YI3_6I << YI3_6I [2]
- RESET# << RESET# [2,5]
- FS0 << FS0 [2]
- FS1 << FS1 [2]
- FS2 << FS2 [2]
- COAXIAL << COAXIAL [5]
- GND << GND [1]

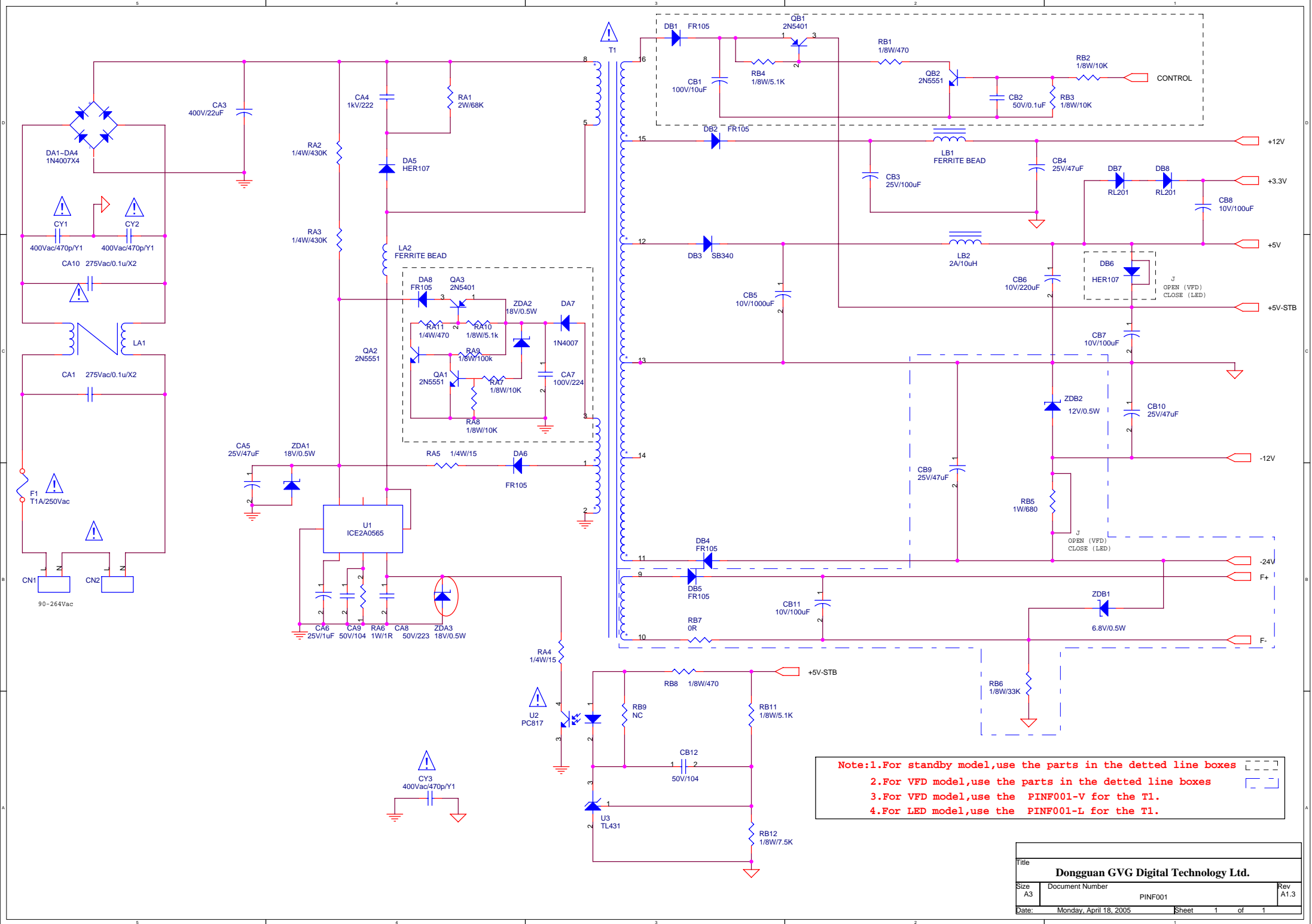
- RGB_G >> RGB_G [5]
- RGB_B >> RGB_B [5]
- RGB_R >> RGB_R [5]
- CVBS2 >> CVBS2 [5]
- TV >> TV [5]
- RGB/CVBS >> RGB/CVBS [5]
- CVBS >> CVBS [5]

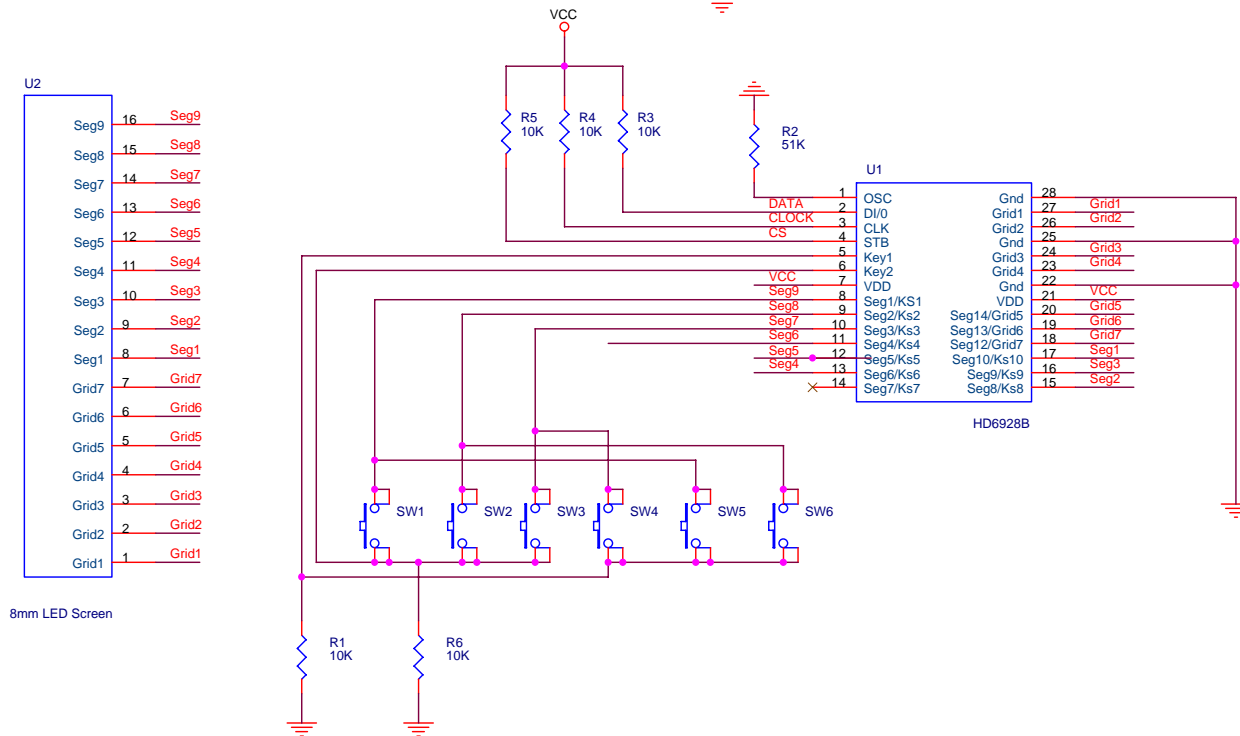
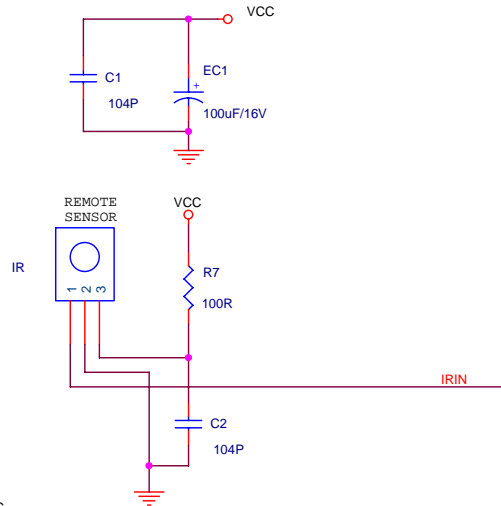
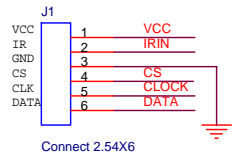


- [1] -12V >> -12V
 [1] +12V >> +12V
 [1] VCC >> VCC
 [1] VCC_AUDIO >> VCC_AUDIO
 [1,2,3,4] GND >> GND
- [2] ASDAT0[2] >> ASDAT0_2I
 [2] ACLK >> ACLK
 [2] ABCK >> ABCK
 [2] ALRCK >> ALRCK
 [2] MUTE_MIC >> MUTE_MIC
 [2] MUTE_DAC >> MUTE_DAC
 [2,4] RESET# >> RESET#
 [2,5] SCL << SCL
 [2,5] SDA << SDA
 [2] ASPDIF >> ASPDIF
 [4] COAXIAL << COAXIAL
 [4] RGB_R >> RGB_R
 [4] RGB_G >> RGB_G
 [4] RGB_B >> RGB_B
 [4] CVBS2 >> CVBS2
 [4] CVBS >> CVBS
 [4] TV >> TV
 [4] RGB/CVBS >> RGB/CVBS
 [2] HSYNC# >> HSYNC#
 [2] VSYNC# >> VSYNC#
 [2] AL >> AL
 [2] AR >> AR



GVG Digital Technology Limited			
Title	AUDIO OUT		
Size	Document Number	MMTK010	Rev A3.3
Date	星期二, 三月 21, 2006	Sheet	5 of 5





DONG GUAN GVG DIGITAL TECHNOLOGY LTD. .			
Title3828 Control Borad Sechmatic			
Size B	Document NumberCGVG035		RevA2.0
Date: 星期六, 六月 11, 2005	Sheet 1	of 1	



Title			GVG Digital Technology Limited		
SIZE	GV-3828/GV-3830/DW-6 /DW-12 MIC				REV:01
A3					
Date: Friday, march 12, 2004				SHEET: 1 OF 1	

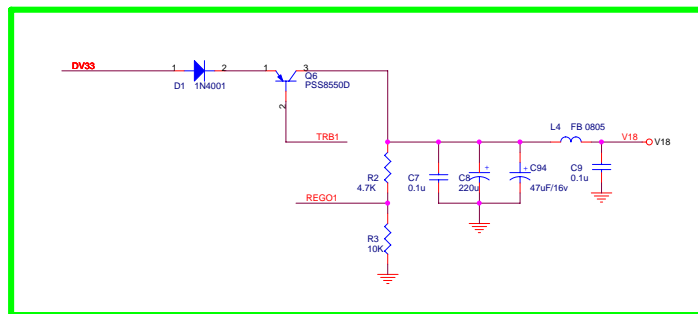
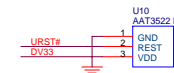
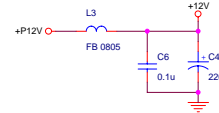
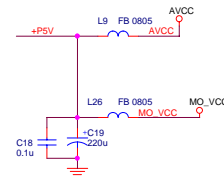
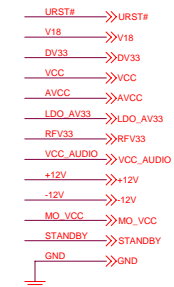
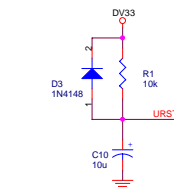
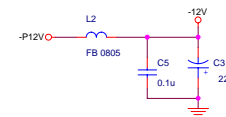
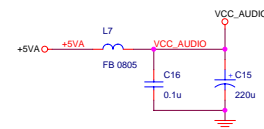
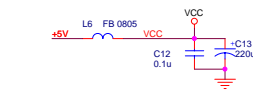
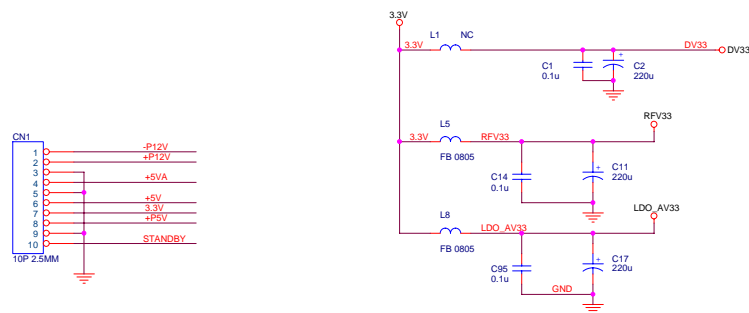
GVG DIGITAL
MMTK010 REV.A3.3

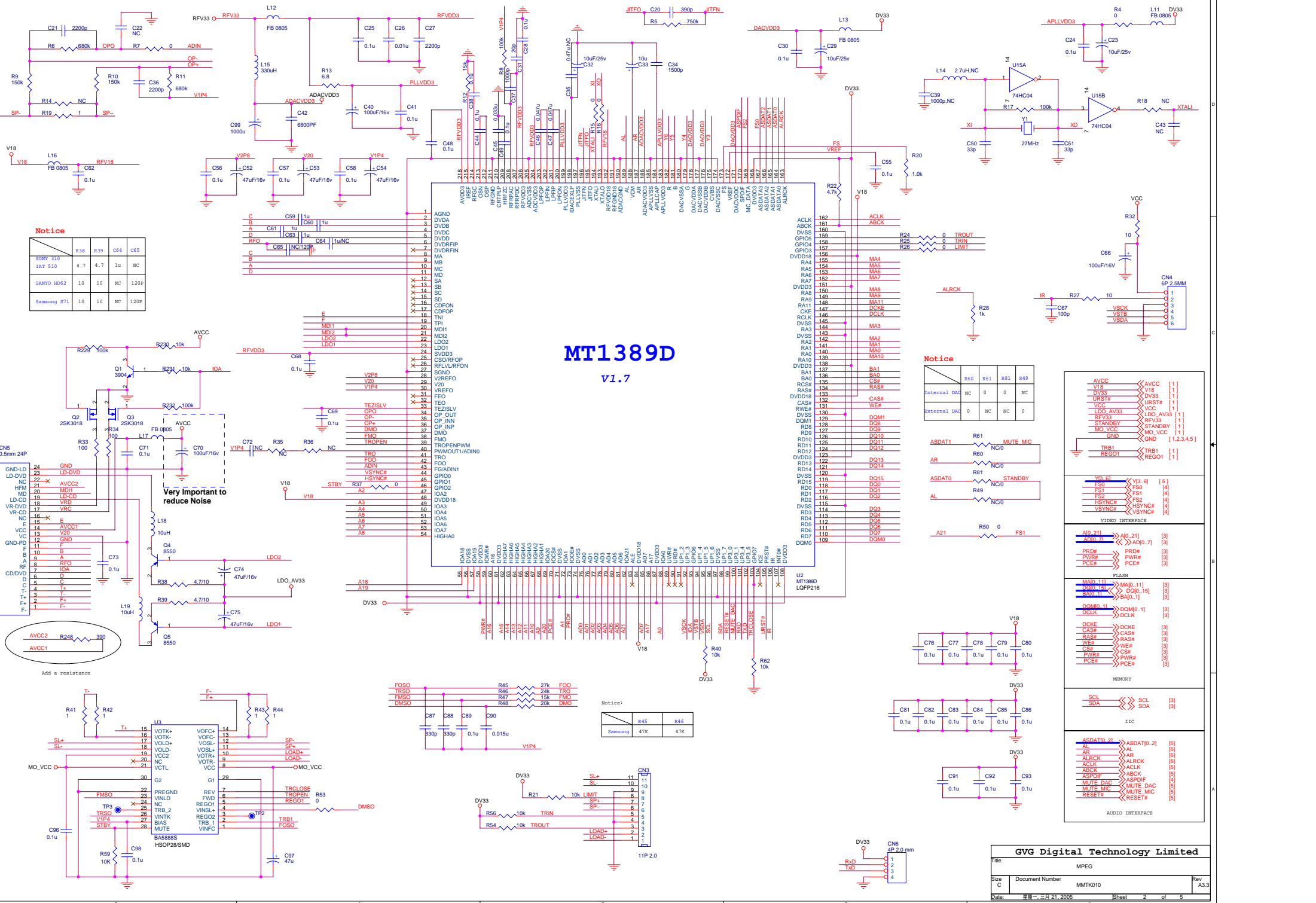
- ```

1 INDEX & POWER, RESET
2 RF / SERVO /MPEG - MT1389D
3 MEMORY - SDRAM, FLASH/EEPROM
4 VIDEO FILTER
5 AUDIO - CS4360, CS4340,AUDIO FILTER

```

| NAME     | TYPE             | DEVICE        |
|----------|------------------|---------------|
| VCC      | Digital 5V       | SUPPLY        |
| DV33     | Digital 3.3V     | MT1389E       |
| RFV33    | Servo 3.3V       | MT1389E       |
| LDO_AV33 | Laser Diode 3.3V |               |
| AVCC     | RF 5V            | PICKUP HEADER |
| V18      | Digital 1.8V     | MT1389E       |
| SD33     | Digital 3.3V     | SDRAM         |
| +12V     | Audio +12V       | OP AMP.       |
| -12V     | Audio -12V       | OP AMP.       |
| AVDD     | Audio 5V         | Audio DAC     |
| DVDD     | Audio 5V         | Audio DAC     |





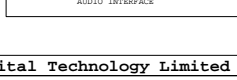
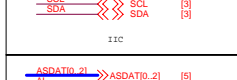
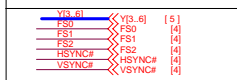
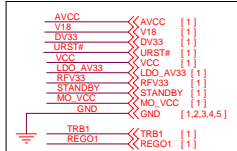
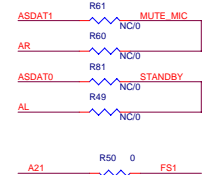
Notice

|             |     |     |     |      |
|-------------|-----|-----|-----|------|
| ROHM 310    | R38 | R39 | C64 | C65  |
| 12K 510     | 4.7 | 4.7 | 1u  | NC   |
| SANYO ND62  | 10  | 10  | NC  | 120P |
| Samsung S71 | 10  | 10  | NC  | 120P |

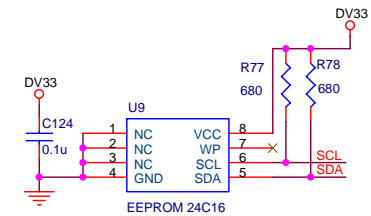
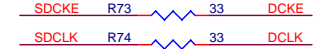
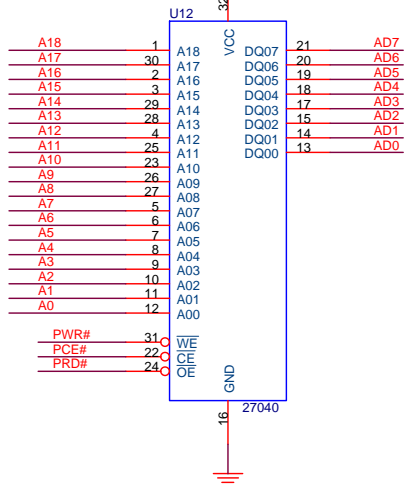
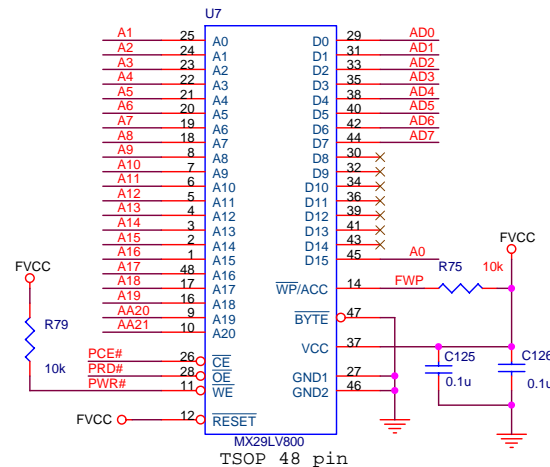
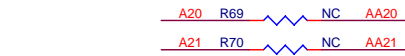
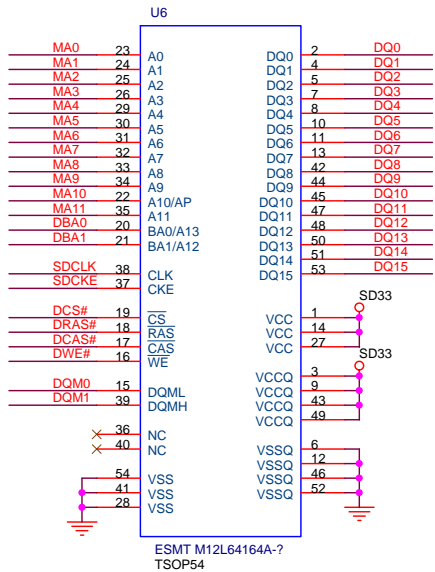
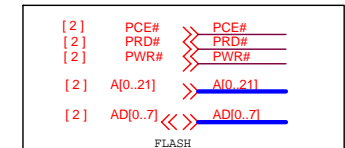
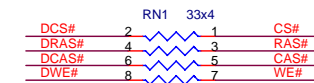
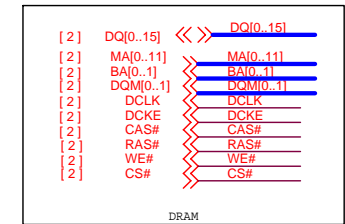
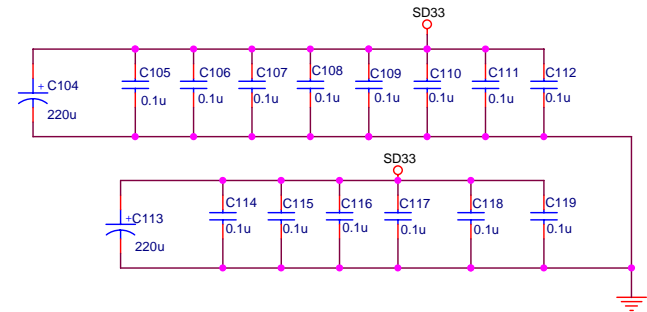
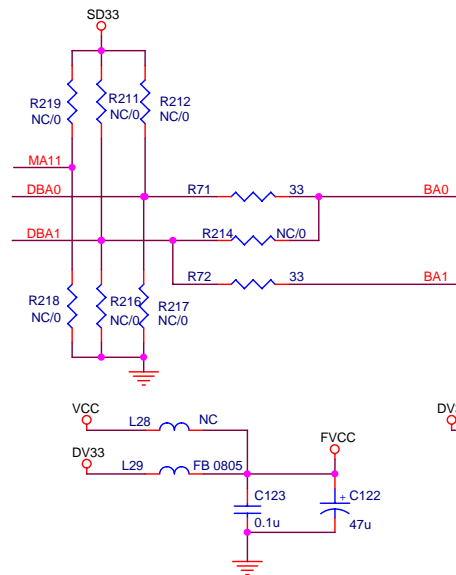
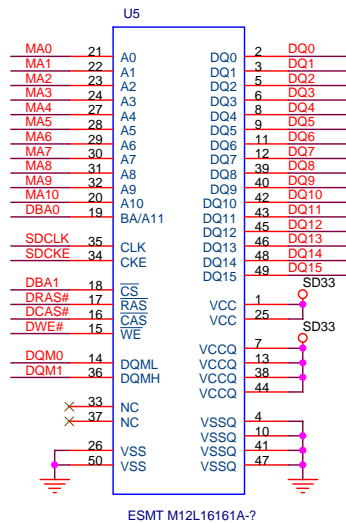
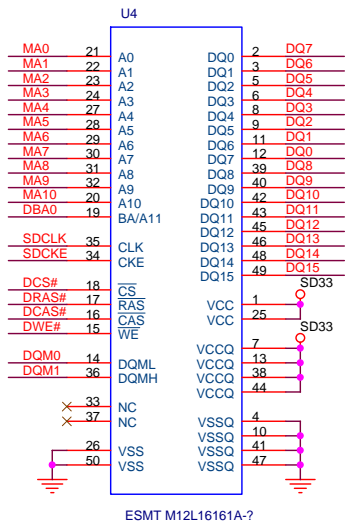
MT1389D  
V1.7

Notice

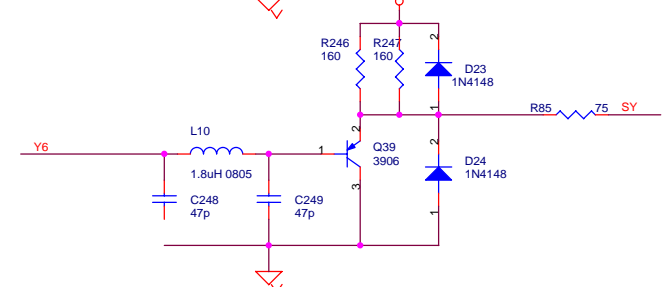
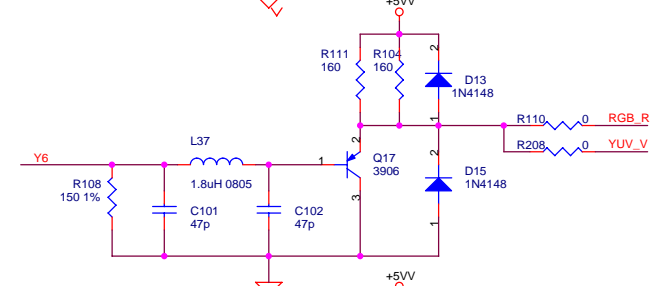
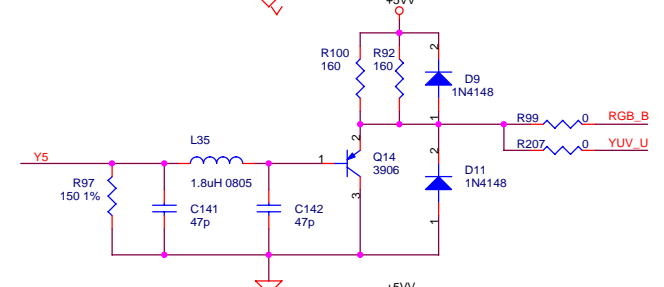
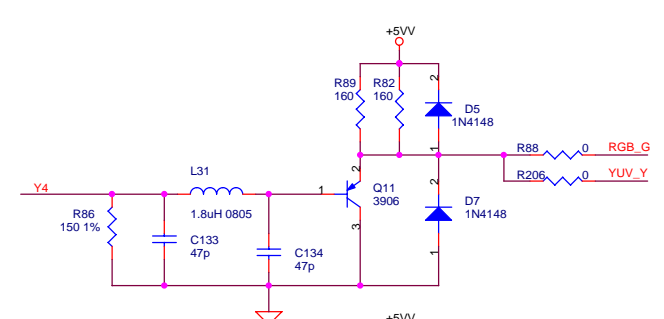
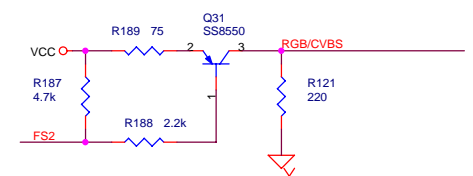
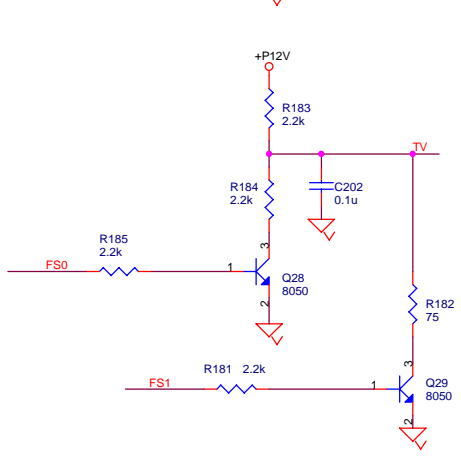
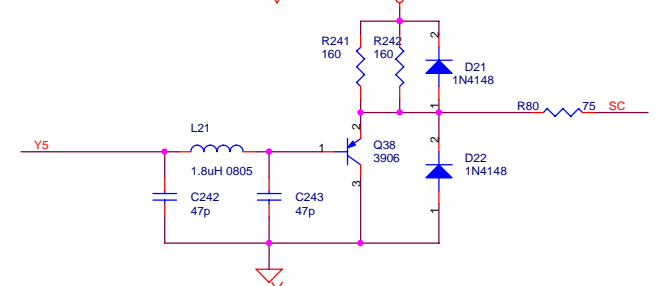
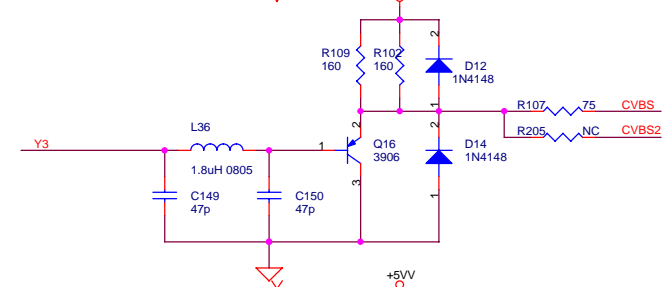
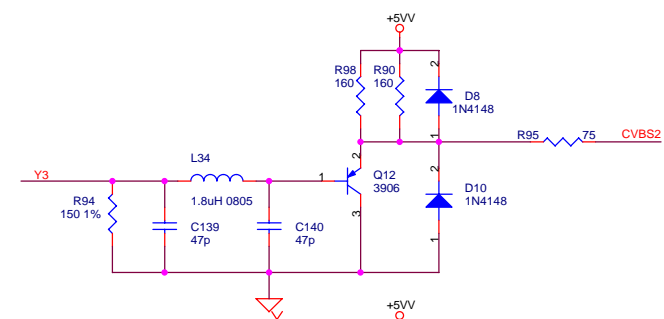
|              |     |     |     |     |
|--------------|-----|-----|-----|-----|
|              | R60 | R61 | R81 | R49 |
| Internal DAC | NC  | 0   | 0   | NC  |
| External DAC | 0   | NC  | NC  | 0   |



| GVG Digital Technology Limited |                 |        |          |
|--------------------------------|-----------------|--------|----------|
| File                           | MPEG            |        |          |
| Size                           | Document Number | MMTK10 | Rev A3.3 |
| Date                           | 2006.03.21      | Sheet  | 2 of 5   |

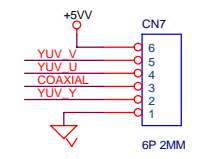
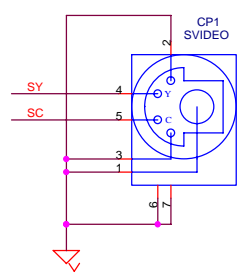
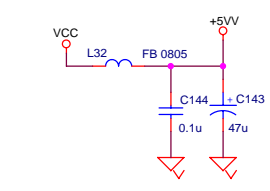


| GVG Digital Technology Limited |                  |         |        |
|--------------------------------|------------------|---------|--------|
| Title                          |                  |         |        |
| MEMORY - SDRAM, FLASH/EEPROM   |                  |         |        |
| Size                           | Document Number  | MMTK010 | Rev    |
| B                              |                  |         | A3.3   |
| Date:                          | 星期一, 三月 21, 2005 | Sheet   | 3 of 5 |

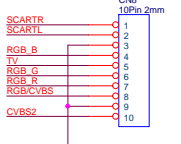
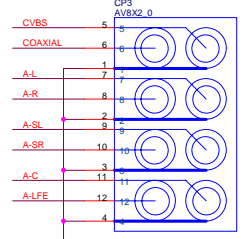
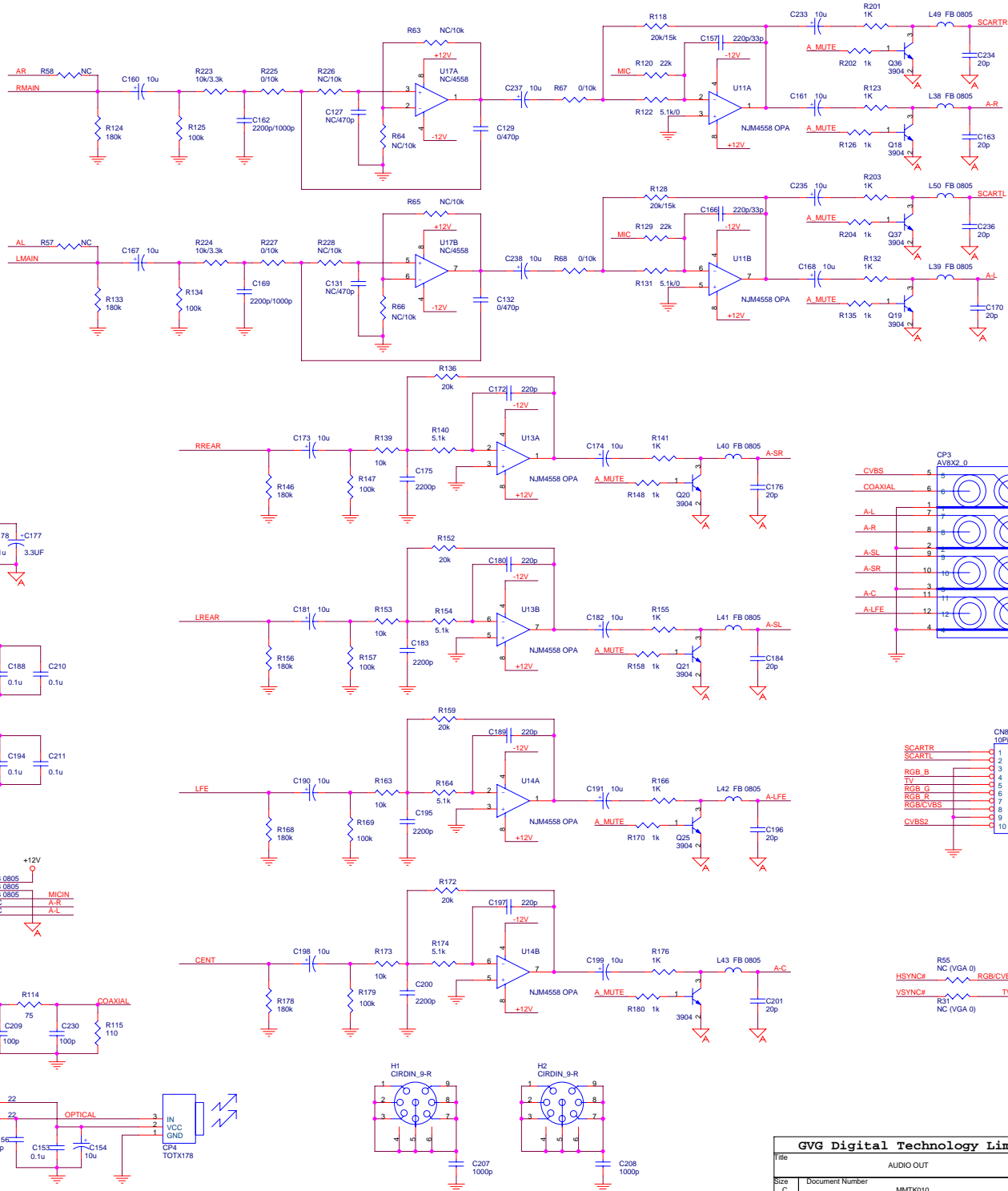
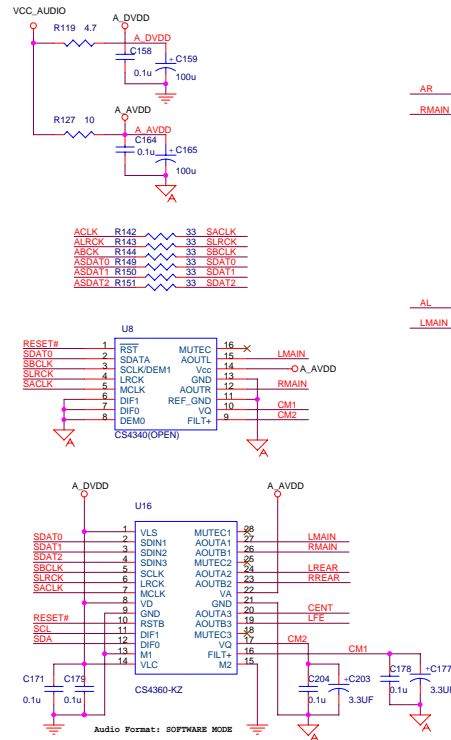


- VCC << VCC [1]
- Y13\_6I << Y13\_6I [2]
- RESET# << RESET# [2,5]
- FS0 << FS0 [2]
- FS1 << FS1 [2]
- FS2 << FS2 [2]
- COAXIAL << COAXIAL [5]
- GND << GND [1]

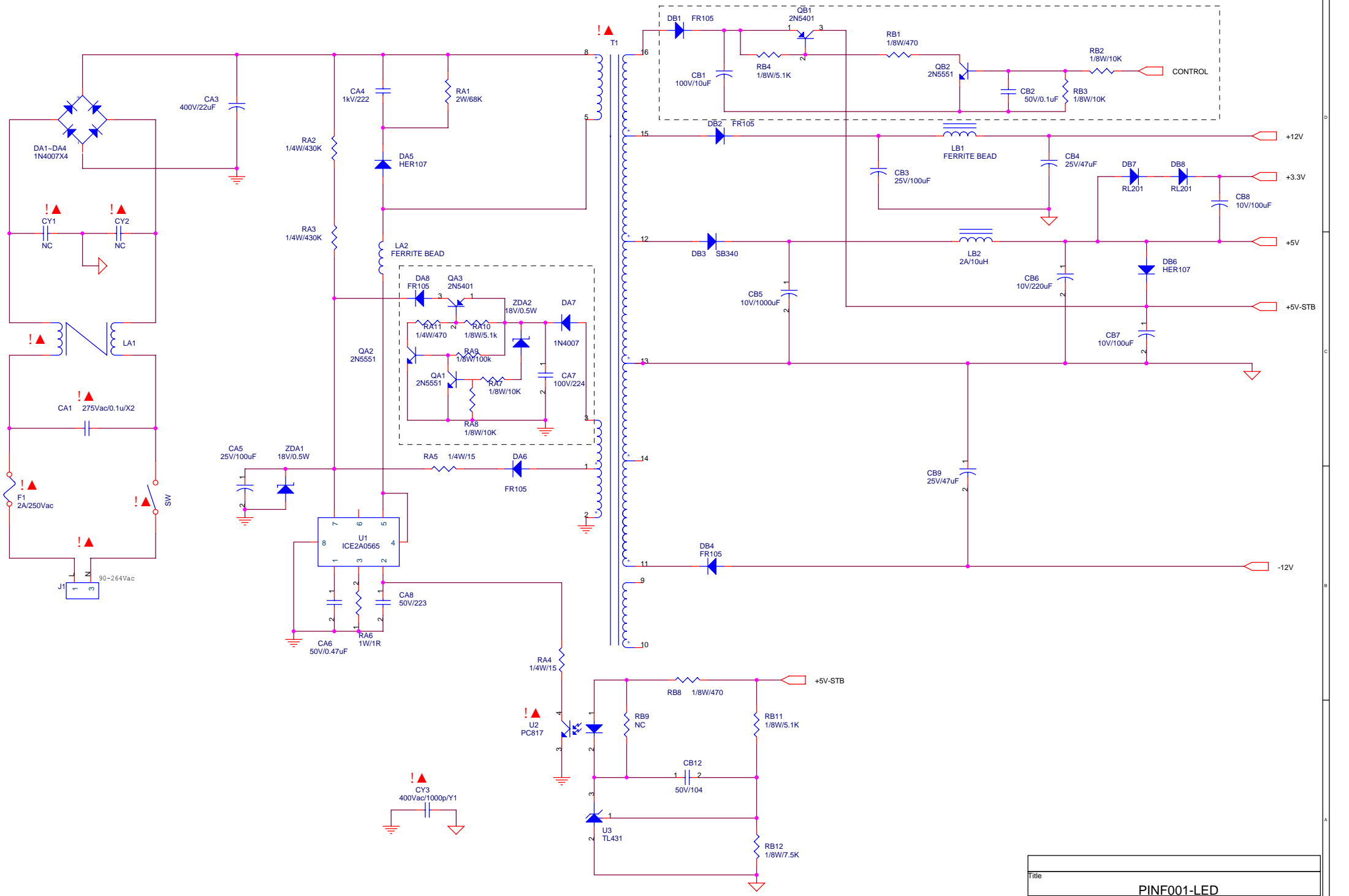
- RGB\_G >> RGB\_G [5]
- RGB\_B >> RGB\_B [5]
- RGB\_R >> RGB\_R [5]
- CVBS2 >> CVBS2 [5]
- TV >> TV [5]
- RGB/CVBS >> RGB/CVBS [5]
- CVBS >> CVBS [5]



- [1] -12V >> -12V  
 [1] +12V >> +12V  
 [1] VCC >> VCC  
 [1] VCC\_AUDIO >> VCC\_AUDIO  
 [1,2,3,4] GND >> GND
- [2] ASDAT0[2] >> ASDAT0\_2I  
 [2] ACLK >> ACLK  
 [2] ABCK >> ABCK  
 [2] ALRCK >> ALRCK  
 [2] MUTE\_MIC >> MUTE\_MIC  
 [2] MUTE\_DAC >> MUTE\_DAC  
 [2,4] RESET# >> RESET#  
 [2,5] SCL << SCL  
 [2,5] SDA << SDA  
 [2] ASPDIF >> ASPDIF  
 [4] COAXIAL << COAXIAL  
 [4] RGB\_R >> RGB\_R  
 [4] RGB\_G >> RGB\_G  
 [4] RGB\_B >> RGB\_B  
 [4] CVBS2 >> CVBS2  
 [4] CVBS >> CVBS  
 [4] TV >> TV  
 [4] RGB/CVBS >> RGB/CVBS  
 [2] HSYNC# >> HSYNC#  
 [2] VSYNC# >> VSYNC#  
 [2] AL >> AL  
 [2] AR >> AR



| GVG Digital Technology Limited |                  |         |          |
|--------------------------------|------------------|---------|----------|
| Title                          | AUDIO OUT        |         |          |
| Size                           | Document Number  | MMTK010 | Rev A3.3 |
| Date                           | 星期二, 三月 21, 2006 | Sheet   | 5 of 5   |



|             |                          |              |
|-------------|--------------------------|--------------|
| Title       |                          |              |
| PINF001-LED |                          |              |
| Size<br>A3  | Document Number<br><Doc> | Rev<br>1.0   |
| Date:       | Friday, October 29, 2004 | Sheet 1 of 1 |