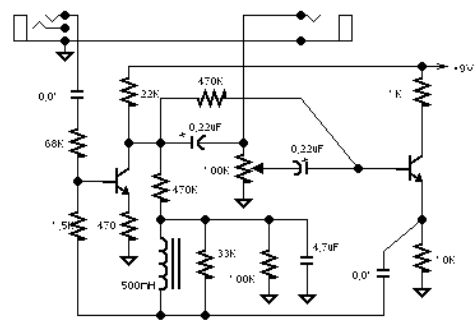


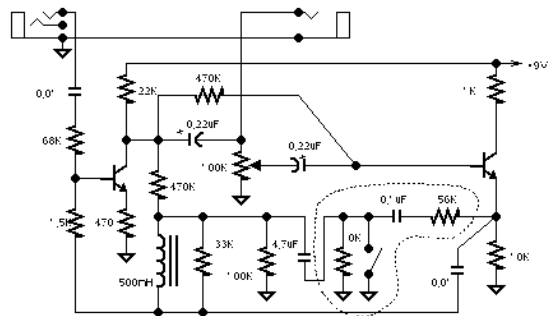
## Maestro Boomer 2 Wah/Volume

The Maestro Boomer2 Wah/Volume pedal is VERY similar to the standard plain vanilla Dunlop Crybaby wah pedal. The differences to allow conversion to a volume pedal are pretty simple to see. Compare the Maestro to the Dunlop. The Maestro has two additional resistors and one additional capacitor, in addition to the switch for the volume/wah change compared to the Dunlop. The switch seems to open the connection of the 4.7uF capacitor to ground and feed some signal back to the first transistor output circuit.

I have not tried this conversion yet, but it seems like the conversion schematic shown at left should work, or at least be an excellent starting point for the conversion.



Dunlop Crybaby



Dunlop Crybaby Modified for Volume/Wah Use