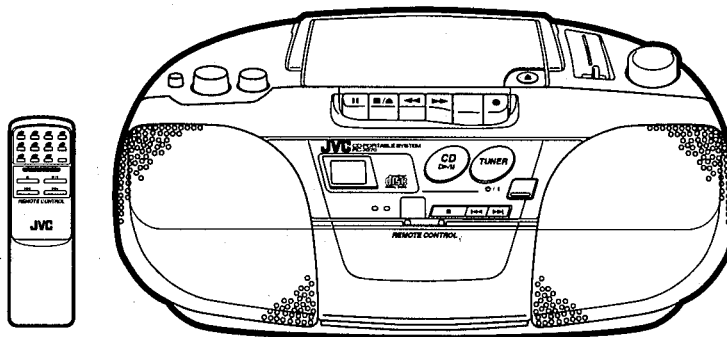


JVC

SERVICE MANUAL

CD PORTABLE SYSTEM

RC-X270BK B/E/EN/G



COMPACT
disc
DIGITAL AUDIO

This Service manual have not Instructions and Location of Main Parts, Block Diagram and so on. These item should be used in conjunction with service manual for RC - X260BK B/E/EN/G (Issue No. 10023).

Area Suffix

B.....U.K.
E.....Continental Europe
ENNorth Europe
GGermany

■ Comparison Table about RC - X270BK & RC - 260BK

REF. NO.	PARTS NAME	AREA SUFFIX	QTY	PARTS NUMBER	
				RC - X270BK	RC - X260BK
6	LCD LENS		1	40260 - 342 - 05 - 01	40260 - 342 - 00 - 01
7	POWER BUTTON		1	40260 - 201 - 01 - 01	40260 - 201 - 00 - 01
9	FUNCTION BUTTON		1	40260 - 202 - 01 - 01	40260 - 202 - 00 - 01
10	CD BUTTON LENS		1	40260 - 203 - 01 - 01	40260 - 203 - 00 - 01
11	RADIO BUTTON LENS		1	40260 - 204 - 01 - 01	40260 - 204 - 00 - 01
14	CASSETTE DOOR LENS		1	40260 - 343 - 01 - 01	40260 - 343 - 00 - 01
94	NAME PLATE	E,EN	1	VYN5210 - Q005	VYN5208 - Q005
94	NAME PLATE	B	1	VYN5210 - Q002	VYN5208 - Q002
94	NAME PLATE	G	1	VYN5210 - Q008	VYN5208 - Q008

" PACKING & ACCESSORIES "

P2	CARTON		1	VPC5210 - 012	VPC5208 - 012
ADD	REMOTE CONTROL UNIT		1	VGR0062 - 101	-
	(MODEL NAME)			(RM - RX270BK)	-

"ELECTRICAL PARTS "

IC702	IC (RM RECIEVER)		1	GP1U281X	-
C713	CERAMIC CAPACITOR		1	QCXB1CM - 222Y	-
C712	ELECTRICAL CAPACITOR		1	QEK41AM - 476	-
D701	DIODE		1	1SS133	-
R735	CARBON RESISTOR		1	QRD161J - 222	-

Standard Schematic Diagrams

■ System CPU Circuit: Drawing No. VDH5208-006SV

A

B

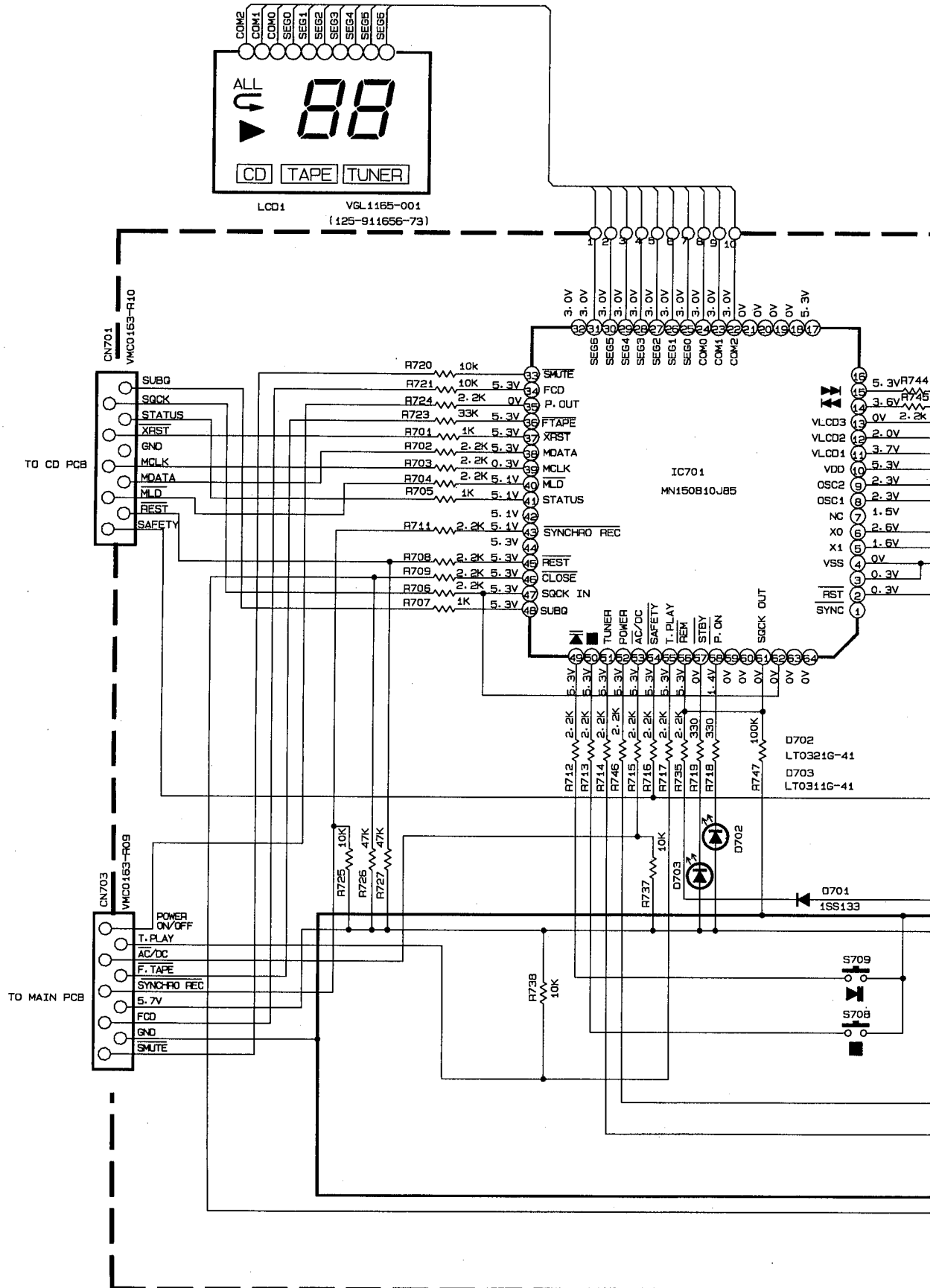
C

D

E

F

G



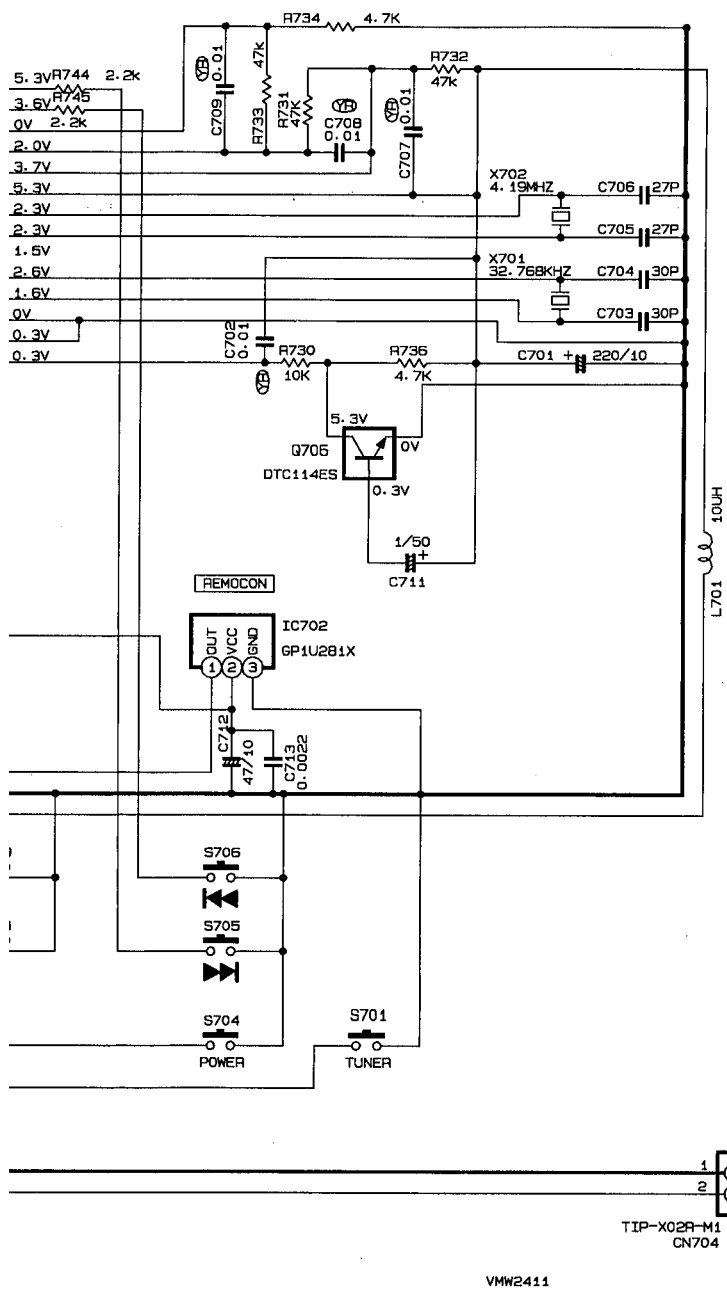
6

7

8

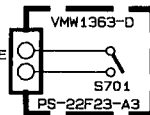
9

10



REMARK:
 1. END R735, C710, D703, Q708
 2. R723, R722 IN VOL PCB
 3. Q703 IN MAIN PCB
 4. Q704, Q705 IN MAIN PCB

OPEN/CLOSE SW P.W.B.

TIP-X02R-M1
CN704

VMW2411

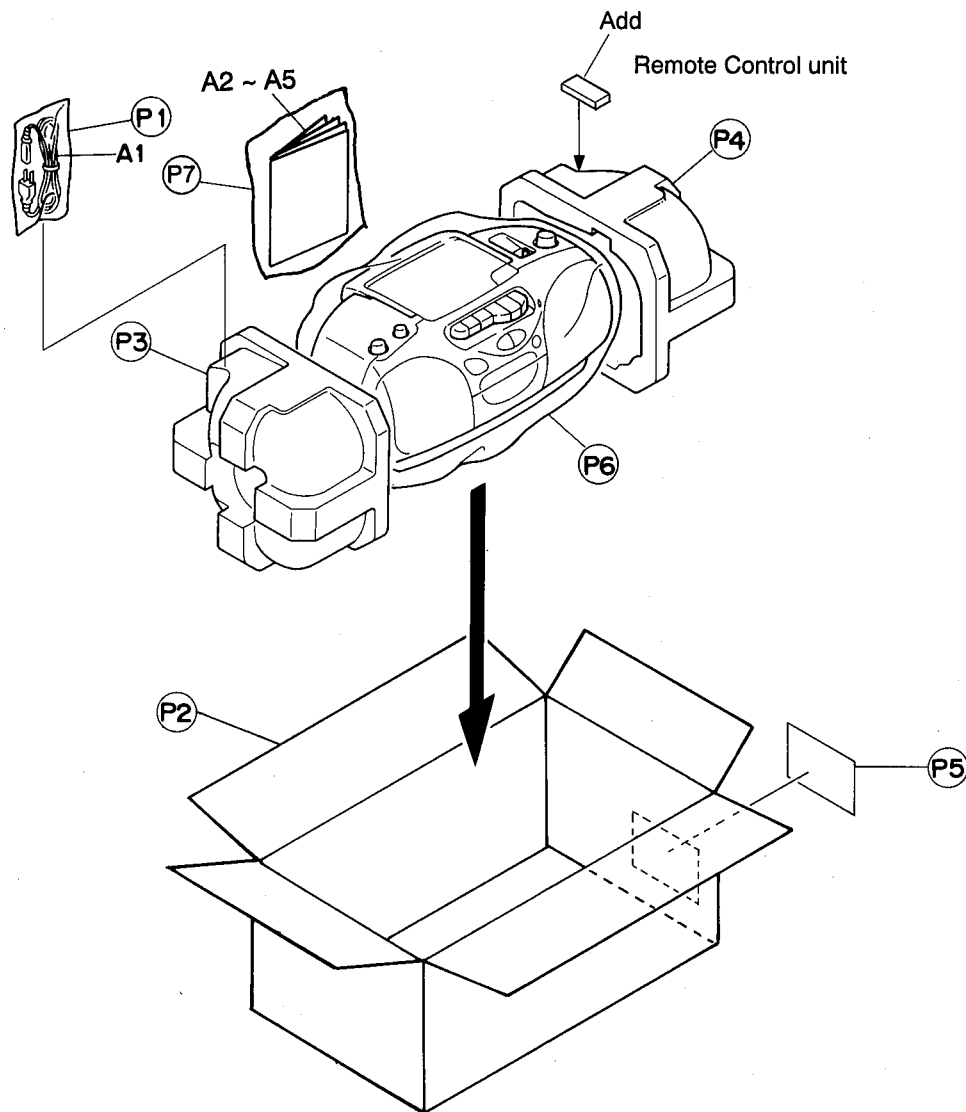
Packing

■ Block No.

M	4
---	---

,

M	5
---	---



JVC

VICTOR COMPANY OF JAPAN, LIMITED
AUDIO PRODUCTS DIVISION

10 - 1, 1 - chome Owatari - machi, Maebashi - city, Japan



Printed in Japan
- H0904 - S -