

# PARTS LIST

[ MX-KA7]

\* All printed circuit boards and its assemblies are not available as service parts.

Area suffix

JW ----- Mexico,Panama

## - Contents -

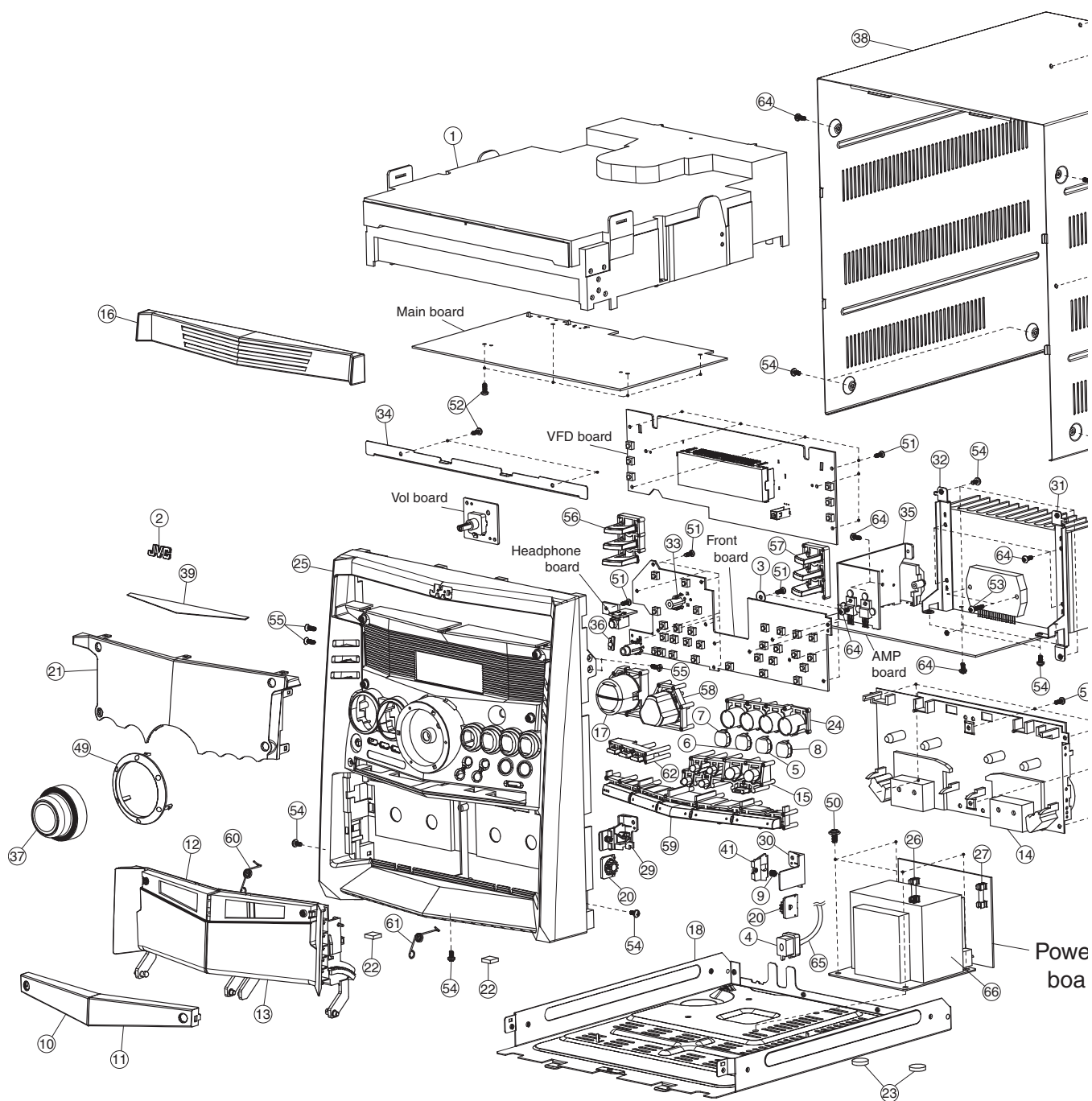
Exploded view of general assembly and parts list (Block No.M1) .....	3- 2
CD changer mechanism assembly and parts list (Block No.MA) .....	3- 5
Cassette mechanism assembly and parts list (Block No.MP) .....	3- 7
Electrical parts list (Block No.01~05) .....	3- 8
Packing materials and accessories parts list (Block No.M3) .....	3-12

## - Note-

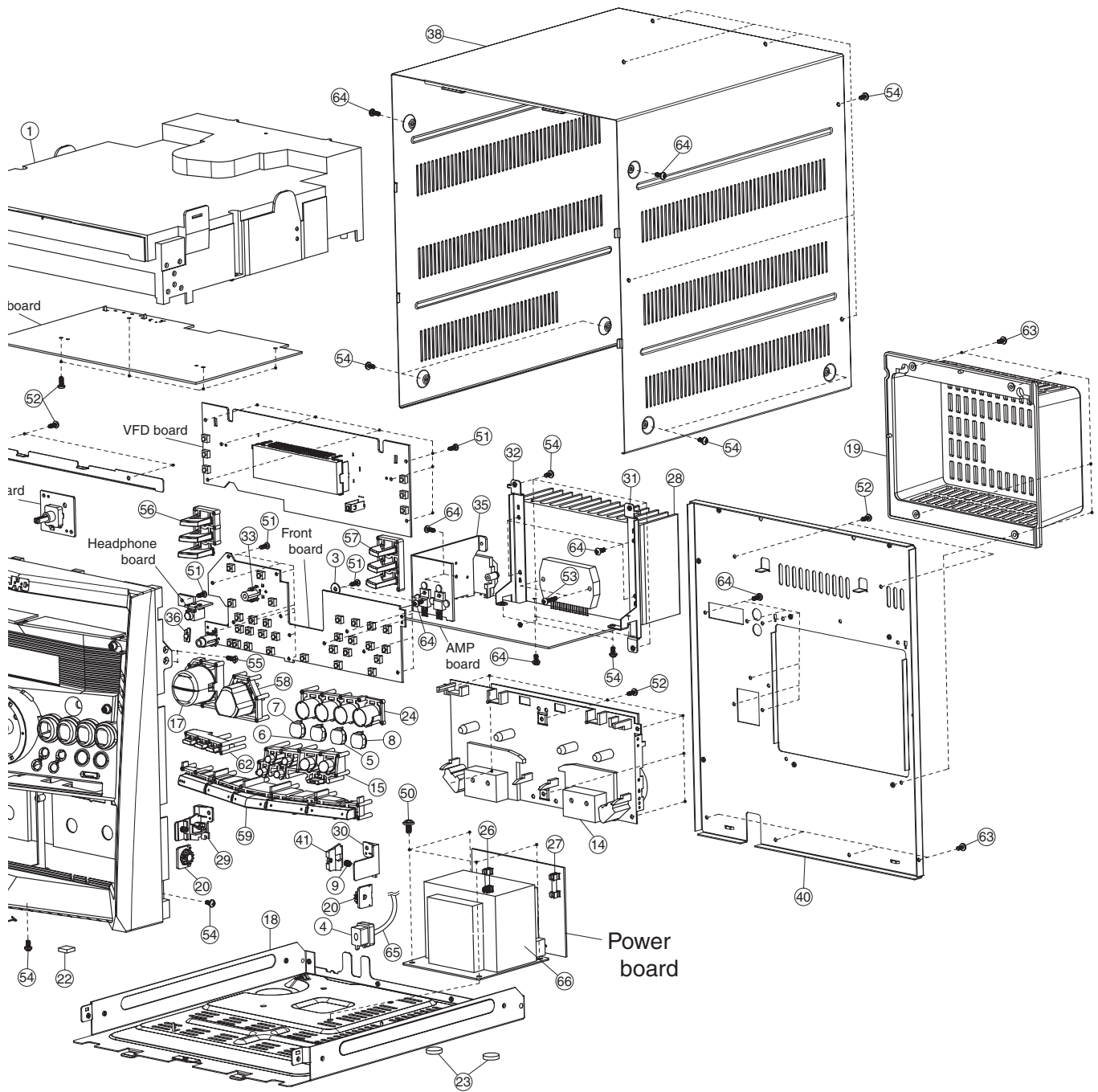
Parts number of normal capacitors and normal resistors doesn't listed on the parts list

# Exploded view of general assmby and parts list

Block No. M 1 M M



Block No. M 1 M M



## General assembly

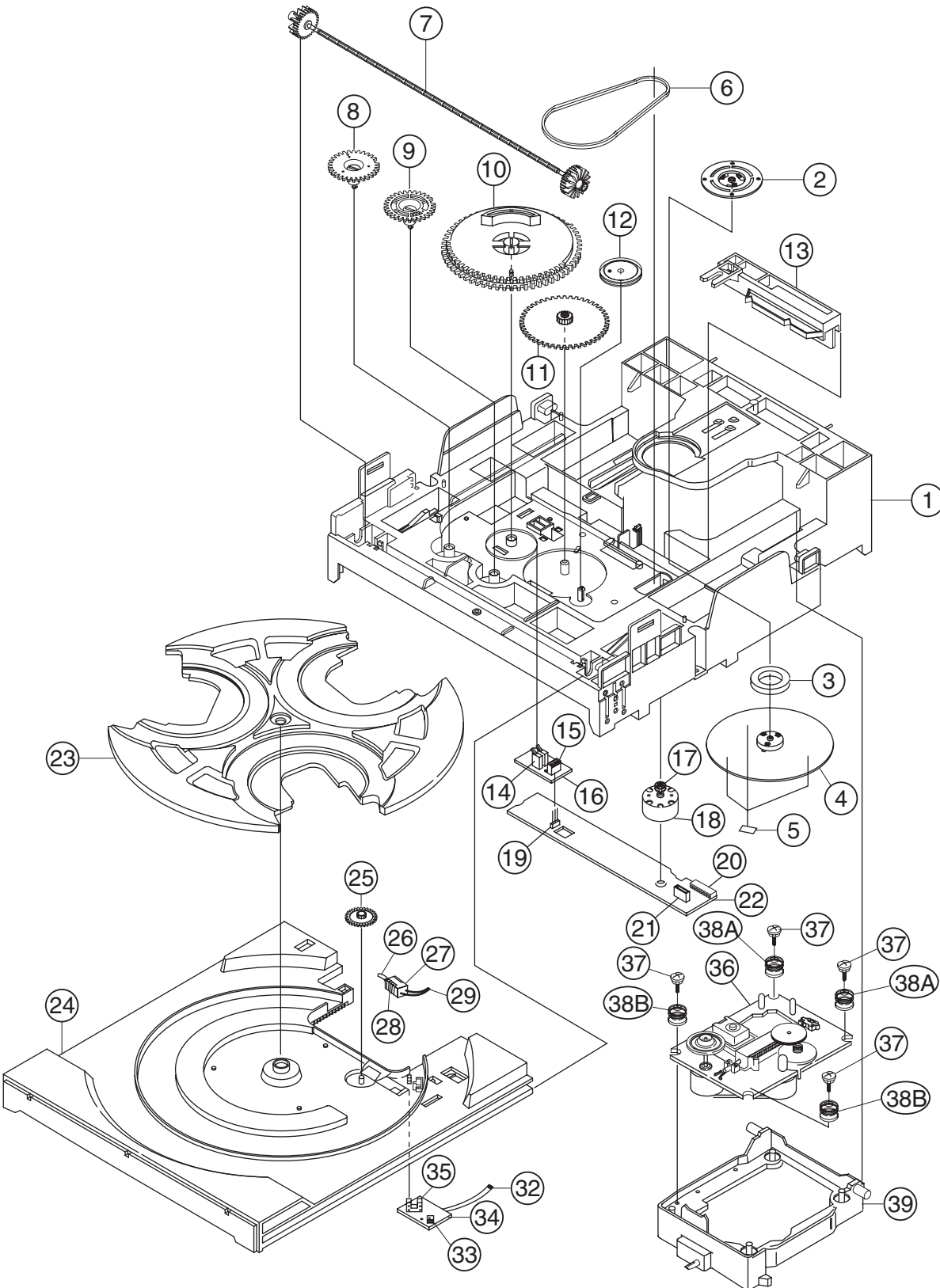
Block No. [M][1][M][M]

Symbol No.	Part No.	Part Name	Description	Local
1	-----	CD CHANGER MACH		
2	BI109835010201	BADGE JVC		
3	BI300856010101	BELT CLIP WASHE		
△ 4	BI301789010101	BUSHING	5RF-5B	
5	BI107475030101	CAP CD3		
6	BI107475020101	CAP CD2		
7	BI107475010101	CAP CD1		
8	BI107475040101	CAP OPEN CLOSE		
9	BI201789010102	CASS LOCK SPRIN	(x2)	
10	BI107468010101	CASS DOOR WIN L		
11	BI107467010101	CASS DOOR WIN R		
12	BI107466010101	CASSETTE HLDE L		
13	BI107465010101	CASSETTE HLDR R		
14	-----	CASSETTE MECHA	CMAT6Z219A	
15	BI107477010101	CD EJECT BUTTON		
16	BI107463010101	CD FITTING		
17	BI107471010101	CD SE BUTTON A		
18	BI202547010101	CHAS MAIN		
19	BI107483010101	COVER HTSINK		
20	BI301388010101	DAMPING GEAR	(x2)	
21	BI1074640801U1	DISPLAY WINDOW		
22	BI103362020102	EVA FOOT	(x2)	
23	BI301779010101	EVA FOOT C	(x2)	
24	BI107473010101	FRAME CD SELECT		
25	BI107462010201	FRONT PANEL		
△ 26	BI402991	FUSE	1.6A 250V F952	
△ 27	BI403011	FUSE	3.15A 250V F951	
28	BI202556010101	HEAT SINK 2		
29	BI104143010102	HLDR LOCK L		
30	BI104143010202	HLDR LOCK R		
31	BI202560010101	HLDR R		
32	BI202553010101	HLDR L		
33	BI107480010101	HLDR SOUND MODE		
34	BI202592010101	HOLDER BRACKET		
35	BI202555010101	HEAT SINK AMP		
36	BI107485010101	INDICATOR STAND		
37	BI109819030201	KNOB VOLUME TAB		
38	BI202548010101/S/	METAL COVER		
39	BI301922010101	MIRROR SHEET		
40	BI2025500301U1	REAR PANEL		
41	BI104142010102	PLATE LOCK 1		
49	BI107482010101	RING VOLUME		
50	BIPMW001101S3	SCREW	4.0XL6 METAL(x4)	
51	BIBT000418	SCREW	2.6XL8 PLASTIC(x23)	
52	BIRT000617B3	SCREW	3.0XL10 PLASTIC(x14)	
53	BIBT0006091	SCREW	3.0XL14 PLASTIC(x2)	
54	BIRM000603S3	SCREW	3.0XL6 METAL(x19)	
55	BIKT000627	SCREW	(x4)	
56	BI107470010101	SELECT BUTTON		
57	BI107469010101	SELECT BUTTON		
58	BI107472010101	SOUND MODE BUTT		
59	BI107478010101	SOURCE BUTTON		
60	BI202566010101	SPRING L		
61	BI202565010101	SPRING R		
62	BI107476010101	SUB BUTTON SET		
63	BIRM000604S3	SCREW	RH/TS 3XL8(x8)	
64	BIRT000611B3	SCREW	RH/TS 3XL8(x17)	
△ 65	BI1400864	POWER CORD		
△ 66	BI211041004001W	POWER TRANS	T951	

# CD changer mechanism assembly and parts list

Block No. M A M M

BI3400931



## CD changer mechanism

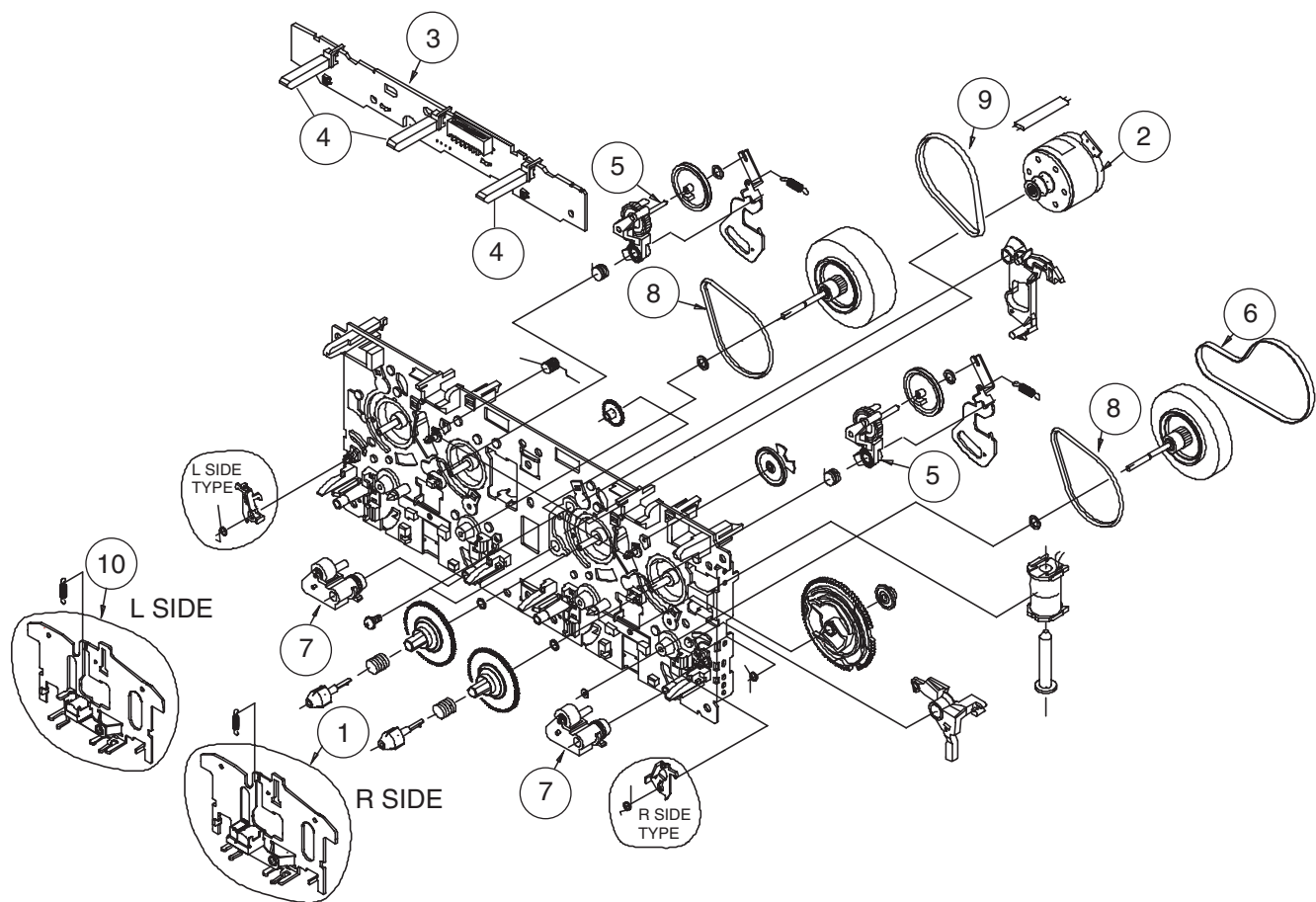
Block No. [M][A][M][M]

Symbol No.	Part No.	Part Name	Description	Local
1	BIAJ7200601J	BASE-MAIN	1X1	
2	BIAJ6100601P	BRKT-CHUCK		
3	BI3302000158	MAGNET-FERRITE		
4	BIAJ7200601L	TABLE-CHUCK	1X4	
5	BIAJ6300601A	SHEET-CHUCK	(x3)	
6	BIAJ7300601B	BELT-LOAD		
7	BIAJ6600601N	GEAR-SYNCRO	1X2	
8	BIAJ6600601L	GEAR-CONVERT	1X4	
9	BIAJ6600601M	GEAR-TRAY	1X4	
10	BIAJ6600601R	GEAR-CAM	1X2	
11	BIAJ6600601K	GEAR-LOAD	1X4	
12	BIAJ6600601J	GEAR-PULLEY	1X4	
13	BIAJ7200601N	SLIDER-CAM	1X4	
14	BI3405000101	SWITCH-MICRO	(x2)	
15	BI3711003379	CONNECTOR- HEADE		
16	BIAJ4100601K	PCB-SW		
17	BIAJ6100601K	PULLEY-MOTOR	1X4	
18	BIAJ3100601F	MOTOR-DC		
19	BI3710001248	CONNECTOR-SOCE		
20	BI3711003692	CONNECTOR- HEADE		
21	BI3708001163	CONNECTOR-FPC		
22	BIAJ4100601L	PCB-MECHA		
23	BIAJ7200601P	TRAY-ROULETTE	1X2	
24	BIAJ7200601Q	TRAY-DISC	1X2	
25	BIAJ6600601Q	GEAR-ROULETTE	1X4	
26	BIAJ6600601P	GEAR-WORM	1X2	
27	BIAJ3100601K	MOTOR-LOADING		
28	BIAJ6300601B	SHEET-MOTOR		
29	BIAJ3900601A	WIRE-ROULETTE		
32	BIAJ3900601B	WIRE-TRAY		
33	BI3711000003	CONNECTOR- HEADE		
34	BIAJ4100601J	PCB-SENSOR		
35	BIAJ3200601A	SENSOR-ROULETTE		
36	BIAJ9050605F	CMS-B31NG6U		
37	BIAJ6000601F	SCREW	(x4)	
38A	BIAJ7300601F	RUBBER-B31Y	(x2)	
38B	BIAJ7300601D	RUBBER-B31	(x2)	
39	BIAJ7200602F	LEVER-LIFTER	1X2	

# Cassette mechanism assembly and parts list

Block No. M P M M


CMAT6Z219A



Note: Parts listed on the Parts List below can be supplied. However, parts that are not listed below cannot be supplied individually but only by purchasing the whole Cassette Mechanism Assembly Unit. (When ordering, use the Parts No. CMAT6Z219A for Cassette Mechanism Assembly Unit.)

## Cassette mechanism

Block No. M P M M

 Symbol No.	Part No.	Part Name	Description	Local
1	BIF513858	PLATE HD BLK		
2	BIF525346	MTR MAIN BLK		
3	BIF567843	PCB CONTROL BLK		
4	BIUE20P12	LEAF SWITCH	(x3)	
5	BIF522063	CLUTCH ASY BLK	(x2)	
6	BIFF19N31	MAIN BELT		
7	BIF51435	ROLLIER PINCH B	(x2)	
8	BIFF19S31	F/R BELT MO	(x2)	
9	BIFF19N22	MAIN BELT		
10	BIF513855	PLATE HD BLK		

Electrical parts list

AMP. board

Block No. [0][1][0][0]				
△ Symbol No.	Part No.	Part Name	Description	Local
△ C901	BICM682101KP015	M CAPACITOR		
△ C902	BICM682101KP015	M CAPACITOR		
△ C903	BICM682101KP015	M CAPACITOR		
△ C904	BICM682101KP015	M CAPACITOR		
△ C905	BICE33865M2	E CAPCITOR		
△ C906	BICE33865M2	E CAPCITOR		
△ C923	BICM682101KP015	M CAPACITOR		
△ C924	BICM682101KP015	M CAPACITOR		
△ C925	BICM682101KP015	M CAPACITOR		
△ C926	BICM682101KP015	M CAPACITOR		
△ C927	BICE47835M61	E CAPCITOR		
△ C928	BICE47835M61	E CAPCITOR		
CN307	BI12S90024U	FFC CONNECTOR		
CN701	BI12S110020	CONNECTOR		
CN951	BI12S90025U	CONNECTOR		
D304	1SS133	DIODE		
D305	1SS133	DIODE		
D325	1SS133	DIODE		
D326	1SS133	DIODE		
D327	1SS133	DIODE		
D331	1SS133	DIODE		
D333	1SS133	DIODE		
D334	MTZJ15C	ZENER DIODE		
D335	MTZJ15C	ZENER DIODE		
D336	1SS133	DIODE		
△ D901	G5SBA60L	DIODE		
D902	FR202	RECTIFIER DIODE		
D903	FR202	RECTIFIER DIODE		
D904	FR202	RECTIFIER DIODE		
D905	FR202	RECTIFIER DIODE		
D906	1N4001	DIODE		
D907	UZ36BSA	DIODE ZENER		
D908	MTZJ6.2B	DIODE ZENER		
D909	1SS133	DIODE		
D910	MTZJ6.2B	DIODE ZENER		
D911	MTZJ5.6B	DIODE ZENER		
D912	MTZJ13B	ZENER DIODE		
D913	MTZJ12C	DIODE ZENER		
△ D914	RS402M	RECTIFIER		
D916	1SS133	DIODE		
△ IC304	STK412-030	IC		
L101	BI2601141	COIL		
L201	BI2601141	COIL		
PWB	BI251227G01V	AMP PWB		
Q103	KTC3199GR	TRANSISTOR		
Q104	KTA1267GR	TRANSISTOR		
Q105	KTC3199GR	TRANSISTOR		
Q203	KTC3199GR	TRANSISTOR		
Q204	KTA1267GR	TRANSISTOR		
Q205	KTC3199GR	TRANSISTOR		
Q307	KTC3199GR	TRANSISTOR		
Q334	KRA107M	TRANSISTOR		
Q335	KRA107M	TRANSISTOR		
Q336	KTC3199GR	TRANSISTOR		
Q337	KTC3199GR	TRANSISTOR		
Q338	KTC3199GR	TRANSISTOR		
Q339	DTC114YS	TRANSISTOR		
Q901	8550C	SI.TRANSISTOR		
Q902	DTC114YS	TRANSISTOR		
Q903	DTC114YS	TRANSISTOR		
Q904	KTB1366	TRANSISTOR		
Q905	KTC3199GR	TRANSISTOR		
Q906	KTC3199GR	TRANSISTOR		
Q907	KTB1366	TRANSISTOR		
Q909	KRA107M	TRANSISTOR		
Q911	KTC3199GR	TRANSISTOR		
Q912	DTC114ES	TRANSISTOR		
R390	1SS133	DIODE		
RY301	BI8RL00071	RELAY		

Wiring diagram

Block No. [0][2][0][0]				
△ Symbol No.	Part No.	Part Name	Description	Local
CN305	BI1205441U	FF-CABLE		
CN306	BI1205261U	FF-CABLE		
CN309	BI1205241U	FF-CABLE		
CN601	BI1205291U	FF-CABLE		
CN604	BI1205251U	FF-CABLE		
CN701	BI1205281U	FF-CABLE		
DECK	BI11AT065B0U	WIRE		
DECKA	BI12P30215U	WIRE		
DECKB	BI12P80102U	WIRE		

Front board

Block No. [0][3][0][0]				
△ Symbol No.	Part No.	Part Name	Description	Local
CN701	BI12S110021	FFC CONNECTOR		
CN702	BI12P60143U	CONNECTOR. WIRE		
CN703	BI12P60143U	CONNECTOR. WIRE		
CN704	BI1203941	CABLE		
CN705	BI1203941	CABLE		
CN706	BI12S160034U	FFC CONNECTOR		
CN707	BI12S210005	FFC CONNECTOR		
D1051	1SS133	DIODE		
D1052	1SS133	DIODE		
D701	1SS133	DIODE		
D702	1SS133	DIODE		
D703	1SS133	DIODE		
D705	1SS133	DIODE		
D706	1SS133	DIODE		
FL701	BI2701941	FL DISPLAY		
HJ105	BI2301211	MINI JACK		
IC701	MN101C35D	IC		
IC702	RPM7140	IC		
L1051	BI26047000KM002	FIXED INDUCTOR		
L1052	BI26047000KM002	FIXED INDUCTOR		
L1053	BI18A843556N000	F-BEAD		
L702	BI26100000KM002	FIXED.INDUCTOR		
L703	BI18A843556N000	F-BEAD		
L707	BI26100000KM002	FIXED.INDUCTOR		
LE701	BI28B4531EP0110	RED LED		
P1	BI11AT160B0U	BLACK WIRE		
PWB	BI251205G02V	FRONT PCB		
Q704	KTC3195Y	TRANSISTOR		
Q705	KTC3195Y	TRANSISTOR		
Q711	KRA102M	TRANSISTOR		
Q713	DTC114YS	TRANSISTOR		
Q716	DTC114TK	TRANSISTOR		
Q717	DTC114TK	TRANSISTOR		
Q718	DTC114TK	TRANSISTOR		
Q719	DTC114TK	TRANSISTOR		
Q720	DTC114TK	TRANSISTOR		
Q721	DTC114TK	TRANSISTOR		
Q722	DTC114TK	TRANSISTOR		
Q723	DTC114TK	TRANSISTOR		
Q724	DTC114TK	TRANSISTOR		
Q725	DTC114TK	TRANSISTOR		
Q726	DTC114TK	TRANSISTOR		
Q727	DTC114TK	TRANSISTOR		
Q728	DTC114TK	TRANSISTOR		
S1	BI8EVQ21405P015	TACT SWITCH		
S1002	BI8EVQ21405P015	TACT SWITCH		
S1003	BI8EVQ21405P015	TACT SWITCH		
S1004	BI8EVQ21405P015	TACT SWITCH		
S1005	BI8EVQ21405P015	TACT SWITCH		
S1006	BI8EVQ21405P015	TACT SWITCH		
S1007	BI8EVQ21405P015	TACT SWITCH		
S1008	BI8EVQ21405P015	TACT SWITCH		
S1009	BI8EVQ21405P015	TACT SWITCH		



△ Symbol No.	Part No.	Part Name	Description	Local
S1010	BI8EVQ21405P015	TACT SWITCH		
S1011	BI8EVQ21405P015	TACT SWITCH		
S1012	BI8EVQ21405P015	TACT SWITCH		
S1013	BI8EVQ21405P015	TACT SWITCH		
S1014	BI8EVQ21405P015	TACT SWITCH		
S1015	BI8EVQ21405P015	TACT SWITCH		
S1016	BI8EVQ21405P015	TACT SWITCH		
S1017	BI8EVQ21405P015	TACT SWITCH		
S1018	BI8EVQ21405P015	TACT SWITCH		
S1019	BI8EVQ21405P015	TACT SWITCH		
S1020	BI8EVQ21405P015	TACT SWITCH		
S1021	BI8EVQ21405P015	TACT SWITCH		
S1022	BI8EVQ21405P015	TACT SWITCH		
S1023	BI8EVQ21405P015	TACT SWITCH		
S2	BI8EVQ21405P015	TACT SWITCH		
S701	BI8EVQ21405P015	TACT SWITCH		
S702	BI8EVQ21405P015	TACT SWITCH		
S703	BI8EVQ21405P015	TACT SWITCH		
S704	BI8EVQ21405P015	TACT SWITCH		
S705	BI8EVQ21405P015	TACT SWITCH		
S706	BI8EVQ21405P015	TACT SWITCH		
SW701	BI804221	JOG SWITCH		
V1051	BI12P40251U	CONNECTOR. WIRE		
X701	BI29ZTA8.00P015	CERAMIC RESONTO		
X702	BI2102471	CRYSTAL		

## Main board

Block No. [0][4][0][0]

△ Symbol No.	Part No.	Part Name	Description	Local
BF601	BI18A843556N000	F-BEAD		
CF1	BI29LT10.7MP015	C.FILTER		
CF2	BI29LT10.7MP015	C.FILTER		
CF3	BI29JT10.7MP015	C.FILTER		
CN305	BI12S110023U	FFC CONNECTOR		
CN306	BI12S90024U	FFC CONNECTOR		
CN307	BI12S30039	CONNECTOR		
CN308	BI12S80024	CONNECTOR		
CN309	BI12S210004	FFC CONNECTOR		
CN601	BI12S160031	FFC CONNECTOR		
CN602	BI12P60142U	CONNECTOR.WIRE		
CN603	BI12P100035U	CONNECTOR.WIRE		
CN604	BI12S160033U	FFC CONNECTOR		
D1	1SS133	DIODE		
D10	1SS133	DIODE		
D2	1SS133	DIODE		
D3	1SS133	DIODE		
D306	MTZJ9.1B	ZENER DIODE		
D307	MTZJ5.1B	ZENER DIODE		
D308	1SS133	DIODE		
D309	1SS133	DIODE		
D310	1SS133	DIODE		
D311	1SS133	DIODE		
D312	1SS133	DIODE		
D313	1SS133	DIODE		
D314	1SS133	DIODE		
D321	1SS133	DIODE		
D322	1SS133	DIODE		
D323	1N4001	DIODE		
D324	1SS133	DIODE		
D328	1SS133	DIODE		
D329	1SS133	DIODE		
D330	1SS133	DIODE		
D4	1SS133	DIODE		
D401	1SS133	DIODE		
D402	1SS133	DIODE		
D5	1SS133	DIODE		
D50	1SS133	DIODE		
D51	1SS133	DIODE		
D6	1SS133	DIODE		
D605	1N4001	DIODE		
D7	SVC203	VARASTOR.DIODE		
D8	SVC203	VARASTOR.DIODE		

△ Symbol No.	Part No.	Part Name	Description	Local
D9	1SS133	DIODE		
IC1	LA1823	IC		
IC101	TDA7440D	IC		
IC102	BA15218F	IC		
IC2	LC72136N	IC		
IC401	HA12237	IC		
IC402	M74HC4094B	IC		
IC601	MN6627482WA	IC		
IC611	AN22000A	I.C C.M		
IC621	BA5936S	IC		
IC631	NJM7808FA	IC		
JA301	BI2301181	RCA W/R JACK		
JA302	BI2301201	TERMINAL ANT		
L1	BI26022000KM002	FIXED INDUCTOR		
L2	BI605082	AM PACK COIL		
L3	BI7A0170	FM COIL		
L301	BI605071	BIAS-COIL		
L304	BI18A843556N000	F-BEAD		
L306	BI18A843556N000	F-BEAD		
L307	BI18A843556N000	F-BEAD		
L4	BI7A0171	FM COIL		
L5	BI26101000KM002	FIXED INDUCTOR		
L50	BI26221000KM002	FIXED INDUCTOR		
L6	BI26220000KM002	FIXED INDUCTOR		
L601	BI26100000KM002	FIXED INDUCTOR		
L602	BI26100000KM000	FIXED INDUCTOR		
LC1	BI29GFMB3TP0151	BAND PASS FILTE		
PWB	BI251206G01V	MAIN PWB		
Q1	KTC3194	TRANSISTOR		
Q101	KTC3199GR	TRANSISTOR		
Q2	KTC3195	TRANSISTOR		
Q201	KTC3199GR	TRANSISTOR		
Q3	DTC114YS	TRANSISTOR		
Q302	KTC3200GR	TRANSISTOR		
Q303	KTC3203Y	TRANSISTOR		
Q304	KTA1267GR	TRANSISTOR		
Q305	DTC144ES	TRANSISTOR		
Q308	DTC144ES	TRANSISTOR		
Q309	KTA1273	TRANSISTOR		
Q310	KTC3199GR	TRANSISTOR		
Q311	KTA1273	TRANSISTOR		
Q312	KTC3199GR	TRANSISTOR		
Q313	KTA1273	TRANSISTOR		
Q314	DTC114YS	TRANSISTOR		
Q316	KTC3199GR	TRANSISTOR		
Q317	KTC3199GR	TRANSISTOR		
Q318	DTC114YS	TRANSISTOR		
Q319	KA1270	TRANSISTOR		
Q321	DTC114YS	TRANSISTOR		
Q322	KRA107M	TRANSISTOR		
Q327	KTA1267GR	TRANSISTOR		
Q4	DTC114YS	TRANSISTOR		
Q401	KTA1267GR	TRANSISTOR		
Q402	2SD2144S	TRANSISTOR		
Q403	KTC3199GR	TRANSISTOR		
Q404	KTC3199GR	TRANSISTOR		
Q5	KRA107	TRANSISTOR		
Q502	2SD2144S	TRANSISTOR		
Q503	KTC3199GR	TRANSISTOR		
Q504	KTC3199GR	TRANSISTOR		
Q601	KTA1267GR	TRANSISTOR		
Q7	KTC3199GR	TRANSISTOR		
Q8	KTA1267GR	TRANSISTOR		
T1	BI2901541	CO. FILTER		
X1	BI2100942	CRYSTAL		
X601	BI2102361	CRYSTAL		
XXXXX	BI11A050M0	BLACK WIRE		
XXXXX	BI202426010101	PLATE ANT		

Transformer board

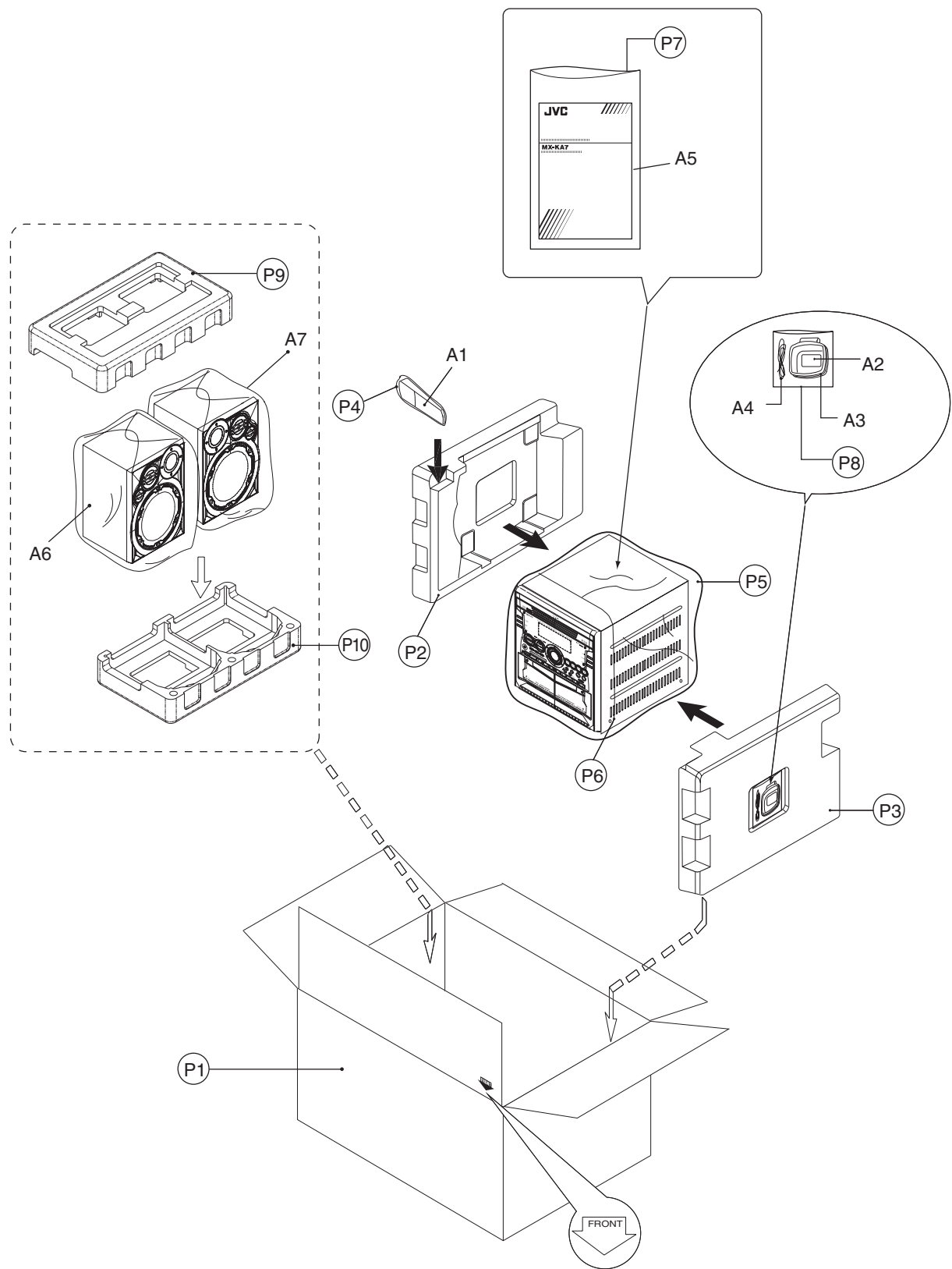
Block No. [0][5][0][0]

△ Symbol No.	Part No.	Part Name	Description	Local
△ C951	BICT224275M	M.CAPACITOR		
△ F951A	BI201196010101	FUSE HOLDER		
△ F951B	BI201196010101	FUSE HOLDER		
△ F952A	BI201196010101	FUSE HOLDER		
△ F952B	BI201196010101	FUSE HOLDER		
FW951	BI12P90055U	CONNECTOR.ASSY		
PWB	BI251223G01V	TRANS PWB		
R951	BIRC3352	RESISTOR		
△ TB901	BI201323010101	TERMINAL		
△ TB902	BI201323010101	TERMINAL		

<MEMO>

Packing materials and accessories parts list

Block No. **M 3 M M**



## Packing and accessories

Block No. [M][3][M][M]

△ Symbol No.	Part No.	Part Name	Description	Local
A 1	BI600MXKA6380	REMOTE CONTROL		
A 2	-----	BATTERY	(x2)	
A 3	BIAN01031	AM LOOP ANT		
A 4	BIAN01012	ANT WIRE		
A 5	BI4412201U	INSTRUCTIONS	LVT1075-001A	
A 6	MXKA7JW-SPBOX-L	SPEAKER BOX L		
A 7	MXKA7JW-SPBOX-R	SPEAKER BOX R		
P 1	BI4313451U	CARTON BOX		
P 2	BI4512251	POLY FORM	Left	
P 3	BI4512261	POLY FORM	Right	
P 4	BI4005355	POLY BAG	REMOTE CONTROL	
P 5	BI4710321	POLY BAG	SET	
P 6	BI4511451	EPE FOAM PAPER	SET	
P 7	BI4710311	POLY BAG	INSTRUCTIONS	
P 8	BI4710511	POLY BAG	ANT LOOP	
P 9	BI4512351	POLY FORM	Top	
P 10	BI4512361	POLY FORM	Bottom	