

HISTORY INFORMATION FOR THE FOLLOWING MANUAL:

SERVICE MANUAL

AZ2-TK Chassis

ORIGINAL MANUAL ISSUE DATE: 1/2011

Version	Date	Subject
1.0	1/13/2011	No revisions or updates are applicable at this time.
2.0	3/15/2011	Reissue entire manual to add Block Diagram, Connector Diagrams and Adjustment Section.

LCD Digital Color TV

SONY®

SERVICE MANUAL

AZ2-TK Chassis

LCD Digital Color TV

SONY®

MODEL LIST

<i>MODEL</i>	<i>COMMANDER</i>	<i>DESTINATION</i>
KDL-22BX325	<i>RM-YD066</i>	<i>CHILE</i>
KDL-22BX325	<i>RM-YD066</i>	<i>VENEZUELA</i>
KDL-32BX325	<i>RM-YD066</i>	<i>CHILE</i>
KDL-32BX325	<i>RM-YD066</i>	<i>VENEZUELA</i>

<i>MODEL</i>	<i>COMMANDER</i>	<i>DESTINATION</i>
KDL-32BX326	<i>RM-YD066</i>	<i>CHILE</i>
KDL-32BX326	<i>RM-YD066</i>	<i>VENEZUELA</i>
KDL-32BX425	<i>RM-YD066</i>	<i>CHILE</i>
KDL-40BX425	<i>RM-YD066</i>	<i>CHILE</i>
KDL-40BX425	<i>RM-YD066</i>	<i>VENEZUELA</i>

TABLE OF CONTENTS

Warnings and Cautions	1
Safety-Related Warning	2
Safety Check-Out	3
Self Diagnosis Functions	5
Specifications	9
Section 1 - Disassembly/Part Number Information	11
1-1. Table-Top Stand Assembly Removal	11
1-2. Rear Cover and Speakers Removal	12
1-2-1. KDL-22BX325 Only	12
1-2-2. KDL-32BX325/32BX326/32BX425/40BX425 Only	13
1-3. A Board, LIPS22/GT32/GT40 (Power) Board and LCD Panel Removal	14
1-3-1. KDL-22BX325 Only	14
1-3-2. KDL-32BX325/32BX326/32BX425 Only	15
1-3-3. KDL-40BX425 Only	16
1-4. Cleaning the LCD Panel Assembly	17
1-5. Connectors	17
1-5-1. KDL-22BX325 Only	17
1-5-2. KDL-32BX325/32BX326/32BX425/40BX425 Only	17
1-6. Accessories and Packing	18
1-7. Miscellaneous	18
1-8. Remote Commander	18

1-9. Wire Dressing Diagrams.....	19
1-9-1. KDL-22BX325 Only	19
1-9-2. KDL-32BX325/32BX326 Only	20
1-9-3. KDL-32BX425 Only	21
1-9-4. KDL-40BX425 Only	22
Section 2 - Service Adjustments	23
Overview	23
Updating the Software	23
Accessing Service Adjustment Mode.....	23
Selecting the Panel Code After Replacing the Panel.....	24
Section 3 - Diagrams	25
3-1. Circuit Boards Location	25
3-2. Block Diagram	26
3-3. Connector Diagrams.....	27

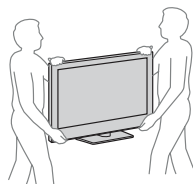
WARNINGS AND CAUTIONS

CAUTION

These servicing instructions are for use by qualified service personnel only. To reduce the risk of electric shock, do not perform any servicing other than that contained in the operating instructions unless you are qualified to do so.

CARRYING THE TV

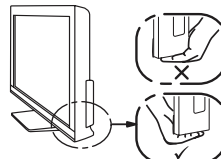
- Disconnect all cables when carrying the TV.
- Carry the TV with the adequate number of people; larger size TVs require two or more people.
- Correct hand placement while carrying the TV is very important for safety and to avoid damage.



KDL-32BX325 32BX32 32BX 25 BX 25 Only



KDL-22BX325 Only




WARNING!!

An isolation transformer should be used during any service to avoid possible shock hazard, because of live chassis. The chassis of this receiver is directly connected to the AC power line.



SAFETY-RELATED COMPONENT WARNING!!

Components identified by shading and  mark on the exploded views are critical for safe operation. Replace all components with Sony parts whose part numbers appear as shown in this manual or in supplements published by Sony. It is essential that all critical parts be replaced only with the part number specified in this manual to prevent electric shock, fire, or other hazard. Circuit adjustments that are critical for safe operation are identified in this manual. Follow these procedures whenever critical components are replaced or improper operation is suspected.

NOTE: Do not modify the original design without obtaining written permission from the manufacturer or you will void the original parts and labor guarantee.

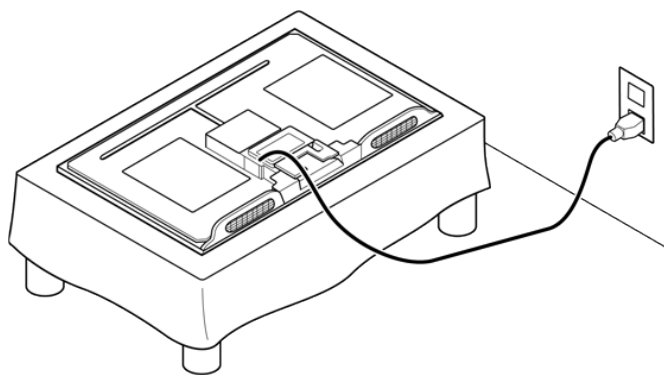
SAFETY-RELATED WARNING

USE CAUTION WHEN HANDLING THE LCD PANEL

When repairing the LCD panel, be sure you are grounded by using a wrist band.

When installing the LCD panel on a wall, the LCD panel must be secured using the 4 mounting holes on the rear cover.

- 1) Do not press on the panel or frame edge to avoid the risk of electric shock.
- 2) Do not scratch or press on the panel with any sharp objects.
- 3) Do not leave the module in high temperatures or in areas of high humidity for an extended period of time.
- 4) Do not expose the LCD panel to direct sunlight.
- 5) Avoid contact with water. It may cause a short circuit within the module.
- 6) Disconnect the AC power when replacing the backlight (CCFL) or inverter circuit.
(High voltage occurs at the inverter circuit at 650Vrms.)
- 7) Always clean the LCD panel with a soft cloth material.
- 8) Use care when handling the wires or connectors of the inverter circuit. Damaging the wires may cause a short.
- 9) Protect the panel from ESD to avoid damaging the electronic circuit (C-MOS).
- 10) During the repair, **DO NOT leave the Power On for more than 1 hour** while the TV is face down on a cloth.



SAFETY CHECK-OUT

After correcting the original service problem, perform the following safety checks before releasing the set to the customer:

1. Check the area of your repair for unsoldered or poorly soldered connections. Check the entire board surface for solder splashes and bridges.
2. Check the interboard wiring to ensure that no wires are “pinched” or touching high-wattage resistors.
3. Check that all control knobs, shields, covers, ground straps, and mounting hardware have been replaced. Be absolutely certain that you have replaced all the insulators.
4. Look for unauthorized replacement parts, particularly transistors, that were installed during a previous repair. Point them out to the customer and recommend their replacement.
5. Look for parts which, though functioning, show obvious signs of deterioration. Point them out to the customer and recommend their replacement.
6. Check the line cords for cracks and abrasion. Recommend the replacement of any such line cord to the customer.
7. Check the antenna terminals, metal trim, “metallized” knobs, screws, and all other exposed metal parts for AC leakage. Check leakage as described below.

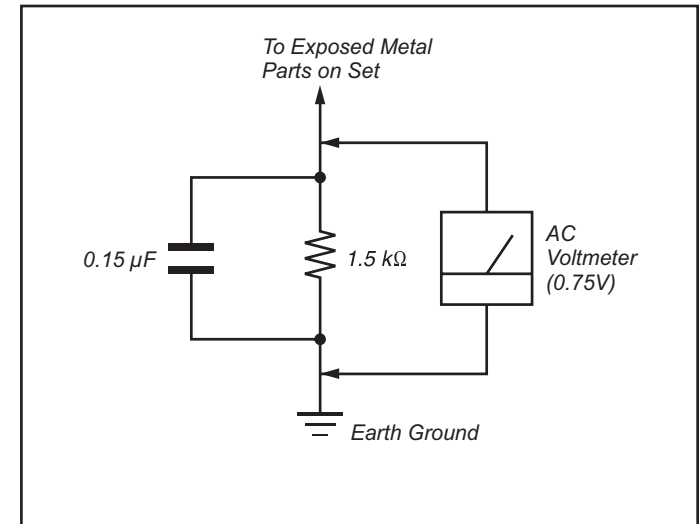


Figure A. Using an AC voltmeter to check AC leakage.

LEAKAGE TEST

The AC leakage from any exposed metal part to earth ground and from all exposed metal parts to any exposed metal part having a return to chassis, must not exceed 0.5 mA (500 microamperes). Leakage current can be measured by any one of three methods.

1. A commercial leakage tester, such as the Simpson 229 or RCA WT-540A. Follow the manufacturers' instructions to use these instructions.
2. A battery-operated AC milliammeter. The Data Precision 245 digital multimeter is suitable for this job.
3. Measuring the voltage drop across a resistor by means of a VOM or battery-operated AC voltmeter. The "limit" indication is 0.75 V, so analog meters must have an accurate low voltage scale.

The Simpson's 250 and Sanwa SH-63TRD are examples of passive VOMs that are suitable. Nearly all battery-operated digital multimeters that have a 2 VAC range are suitable (see Figure A).

HOW TO FIND A GOOD EARTH GROUND

A cold-water pipe is a guaranteed earth ground; the cover-plate retaining screw on most AC outlet boxes is also at earth ground.

If the retaining screw is to be used as your earth ground, verify that it is at ground by measuring the resistance between it and a cold-water pipe with an ohmmeter. The reading should be zero ohms.

If a cold-water pipe is not accessible, connect a 60-to 100-watt trouble-light (not a neon lamp) between the hot side of the receptacle and the retaining screw. Try both slots, if necessary, to locate the hot side on the line; the lamp should light at normal brilliance if the screw is at ground potential (see Figure B).

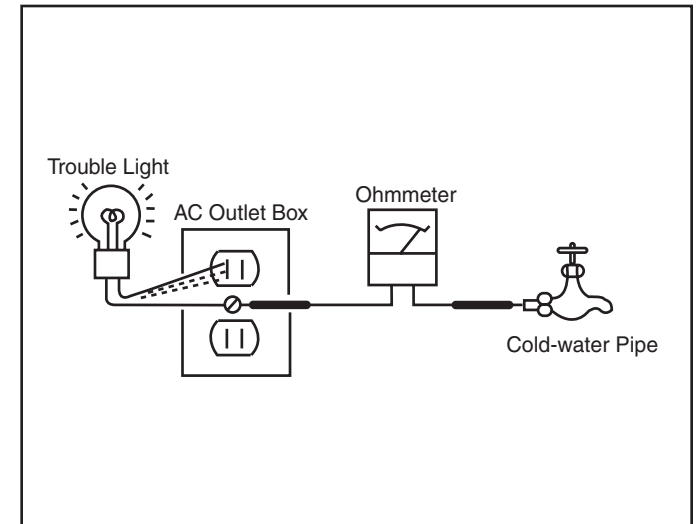


Figure B. Checking for earth ground.

SELF DIAGNOSIS FUNCTIONS



SELF DIAGNOSIS FUNCTION

The units in this manual contain a self-diagnostic function. If an error occurs, the STANDBY LED will automatically begin to flash. The number of times the LED flashes translates to a probable source of the problem. A definition of the STANDBY LED flash indicators is listed in the instruction manual for the user's knowledge and reference. If an error symptom cannot be reproduced, the remote commander can be used to review the failure occurrence data stored in memory to reveal past problems and how often these problems occur.

DIAGNOSTIC TEST INDICATORS

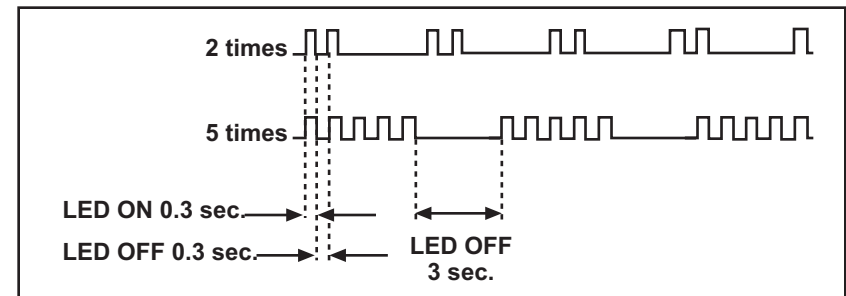
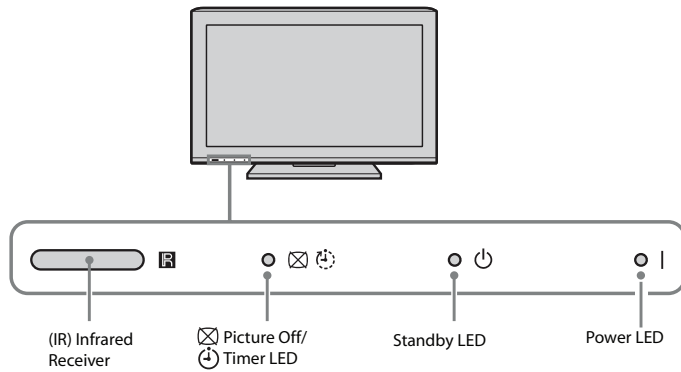
When an error occurs, the STANDBY LED will flash a set number of times to indicate the possible cause of the problem. If there is more than one error, the LED will identify the first of the problem areas. Result for all of the following diagnostic items are displayed on screen.

If the screen displays a "0", no error has occurred .

Number of times Standby LED blinks	Diagnostic Item	Possible Causes	Possible Location
NA	RGB_SEN	RGB Sensor ACK Error	NA
2	MAIN_POWER	Main Power Over Voltage Protection	LIPS22 (Power) Board (KDL-22BX325 Only) GT32 (Power) Board (KDL-32BX325/32BX326/32BX425 Only) GT40 (Power) Board (KDL-40BX425 Only)
3	AUD_PROT	Audio Error Detection	A Board
	DC_ALERT	DTT Error	
4	BALANCER	Panel Balancer Error	NA
5	TCON_ERR	TCON Error	TCON Control MT Board LVDS Connection
	HFR_ERR	HFR Error	
	P_ID_ERR	Panel ID NVM Error	
	PANEL_POWE	Panel Error	
6	BACKLITE	Backlight Error	LCD Panel LIPS22 (Power) Board (KDL-22BX325 Only) GT32 (Power) Board (KDL-32BX325/32BX326/32BX425 Only) GT40 (Power) Board (KDL-40BX425 Only)
7	TEMP_ERR	Temperature Error	A Board

SELF DIAGNOSIS FUNCTIONS

STANDBY LED FLASH COUNT



SELF DIAGNOSIS FUNCTIONS

VIEWING THE SELF CHECK DIAGNOSTIC LIST

For errors with symptoms such as “power sometimes shuts off” or “screen sometimes goes out” that cannot be confirmed, it is possible to bring up past occurrences of a failure for confirmation on the Self Check diagnostic screen:

1. TV must be in standby mode. (Power off).
2. Press the following buttons on the Remote Commander within a second of each other:

DISPLAY → Channel **5** → Volume **-** → **POWER**.

↑ * NOTE: This differs from accessing Service Adjustments Mode (Volume +)

SELF CHECK			
Back		<<	
002	MAIN_POWE	001	
003	AUD_PORT	000	
003	DC_ALERT	000	
004	BALANCER	000	
005	TCON_ERR	000	
005	HFR_ERR	000	
005	P_ID_ERR	000	
005	PANEL_POWE	000	
006	BACKLITE	000	
007	TEMP_ERR	000	
00000	00010	00000	[Menu] Exit

← 001 indicates an error was detected

← 000 indicates no error was detected

↑ Total Operation Time by Hour (max 99999)
↑ Boot Count (max 99999)
↑ Panel Operation Time by Hour (max 99999)

SELF DIAGNOSIS FUNCTIONS

CLEARING THE SELF CHECK DIAGNOSTIC LIST

Since the diagnostic results displayed on the screen are not automatically cleared, always check the self-diagnostic screen after you have completed the repairs to be sure you have cleared the result display to "0".

1. To clear the Error history and Error count: Press the Channel **8** ➡ Channel **0**.
2. To clear the Panel operation time: Press the Channel **7** ➡ Channel **0**.

EXITING THE SELF CHECK DIAGNOSTIC SCREEN

1. To exit the Self Diagnostic screen, turn off the power to the TV by pressing the POWER button on the remote or the POWER button on the TV.

SPECIFICATIONS

Sistema	
Sistema de TV	Análogo: NTSC / PAL-M / PAL-N Digital: SBTVD-T
Cobertura de canales	VHF: 2-13 UHF: 14-69 CATV (Análogo): 1-135
Sistema del panel	Panel LCD (pantalla de cristal líquido)
Salida de bocinas (excepto KDL-22BX325)	8 W + 8 W
Salida de bocinas (sólo KDL-22BX325)	5 W + 5 W
Tomas de entrada/salida	
CABLE/ANTENNA	Terminal externo de 75-ohm para entrada de señal de radiofrecuencia
VIDEO IN 1/2	VIDEO: 1 Vp-p, 75 ohm no equilibrado, sincronización negativa AUDIO: 500 mV _{rm} (Típico) / Impedancia: 47 kilohm
COMPONENT IN	YPBPR (video componente): Y: 1,0 Vp-p, 75 ohm no equilibrado, sincronización negativa / PB: 0,7 Vp-p, 75 ohm / PR: 0,7 Vp-p, 75 ohm / Formato de señal: 480i, 480p, 576i, 576p, 720p, 1.080i, 1.080p AUDIO: 500 mV _{rm} (Típico) / Impedancia: 47 kilohm
HDMI IN	HDMI: Video: 480i, 480p, 576i, 576p, 720p, 1.080i, 1.080p, 1.080/24p Audio: PCM lineal de dos canales 32; 44,1 y 48 kHz; 16; 20 y 24 bits, Dolby Digital Entrada de PC (consulte la página 47)
AUDIO OUT	500 mV _{rm} (típico)
DIGITAL AUDIO OUT (OPTICAL)	Salida de audio óptica digital (PCM/Dolby Digital)
PC IN	Subminiatura D de 15 contactos, RGB analógico, 0,7 Vp-p, 75 ohm, positiva Consulte la tabla de referencia de la señal de entrada de la PC para PC y HDMI IN en la página 47.
PC/HDMI IN 1 AUDIO INPUT	Minitoma estéreo, 500 mV _{rm} , (Típico) / Impedancia: 47 kilohm

Información de licencias

Macintosh es una marca comercial de Apple Inc., registrada en EE. UU. y otros países.

HDMI, el logotipo de HDMI y High-Definition Multimedia Interface son marcas comerciales o marcas comerciales registradas de HDMI Licensing, LLC en los Estados Unidos y en otros países.

Ferguson Patent Properties, LLC:
N° de patente de EE.UU. 5.717.422
N° de patente de EE.UU. 6.816.141

Fabricado bajo licencia de Dolby Laboratories. Dolby y el símbolo de la doble D son marcas comerciales de Dolby Laboratories.

Blu-ray Disc es una marca comercial.

“BRAVIA”, BRAVIA, BRAVIA Sync, y  son marcas comerciales o marcas registradas de Sony Corporation.

“PlayStation” es una marca comercial registrada y “PS3” es una marca comercial de Sony Computer Entertainment Inc.



SPECIFICATIONS

Nombre del modelo KDL-	40BX425	32BX425
Corriente y otras especificaciones		
Requisitos de alimentación	110-240 V ca 50/60 Hz	
Consumo energético en uso	177 W	122 W
en espera	Menos de 1,0 W	
Tamaño de pantalla (medido diagonalmente)	40	31,5 (32 clase)
Resolución del monitor	1.920 puntos (horizontales) × 1.080 líneas (verticales)	
Bocina/Gama completa (2) (mm)	40 × 100	
Dimensiones con soporte (mm)	988 × 632 × 250	800 × 528 × 220
sin soporte (mm)	988 × 600 × 94	800 × 496 × 91
patrón de los orificios de montaje mural (mm)	300 × 300	200 × 200
tamaño de tornillos de montaje mural (mm)	M6 (longitud: consulte el diagrama en la página 49)	
Peso con soporte (kg)	15,3	11,2
sin soporte (kg)	13,3	9,6
Accesorios suministrados común para todos los modelos	Control remoto RM-YD066 (1) / Pilas tipo AA (2) / Manual de instrucciones (1) / Guía de configuración rápida (1) / Suplemento (para evitar caídas) (1) / Manual de seguridad (1) / Licencia del software (1) / Guía de ensamble de la base de soporte (1) / Soporte de sobremesa (1 juego)	
modelos individuales	Tornillos (7)	
Accesorios opcionales	Cables de conexión / Kit de correa de soporte / Soporte de montaje mural: SU-WL500	

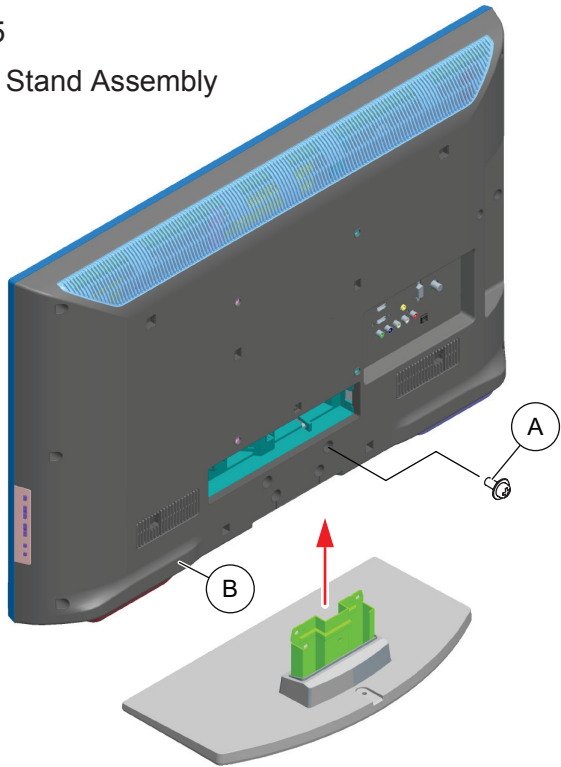
Nombre del modelo KDL-	32BX326 32BX325	22BX325
Corriente y otras especificaciones		
Requisitos de alimentación	110-240 V ca 50/60 Hz	
Consumo energético en uso	122 W	50 W
en espera	Menos de 1,0 W	
Tamaño de pantalla (medido diagonalmente)	31,5 (32 clase)	21,6 (22 clase)
Resolución del monitor	1.366 puntos (horizontales) × 768 líneas (verticales)	
Bocina/Gama completa (2) (mm)	40 × 100	30 × 100
Dimensiones con soporte (mm)	800 × 528 × 220	551 × 393 × 215
sin soporte (mm)	800 × 496 × 91	551 × 363 × 61
patrón de los orificios de montaje mural (mm)	200 × 200	100 × 100
tamaño de tornillos de montaje mural (mm)	M6 (longitud: consulte el diagrama en la página 49)	M4 (longitud: consulte el diagrama en la página 49)
Peso con soporte (kg)	11,2	5,7
sin soporte (kg)	9,6	5,1
Accesorios suministrados común para todos los modelos	Control remoto RM-YD066 (1) / Pilas tipo AA (2) / Manual de instrucciones (1) / Guía de configuración rápida (1) / Suplemento (para evitar caídas) (1) / Manual de seguridad (1) / Licencia del software (1) / Guía de ensamble de la base de soporte (1) / Soporte de sobremesa (1 juego)	
modelos individuales	Tornillos (7)	
Accesorios opcionales	Cables de conexión / Kit de correa de soporte / Soporte de montaje mural: SU-WL100 (sólo KDL-22BX325), SU-WL500 (excepto KDL-22BX325)	

- La disponibilidad de los accesorios opcionales dependerá de las existencias.
- El diseño y las especificaciones están sujetos a cambios sin previo aviso.

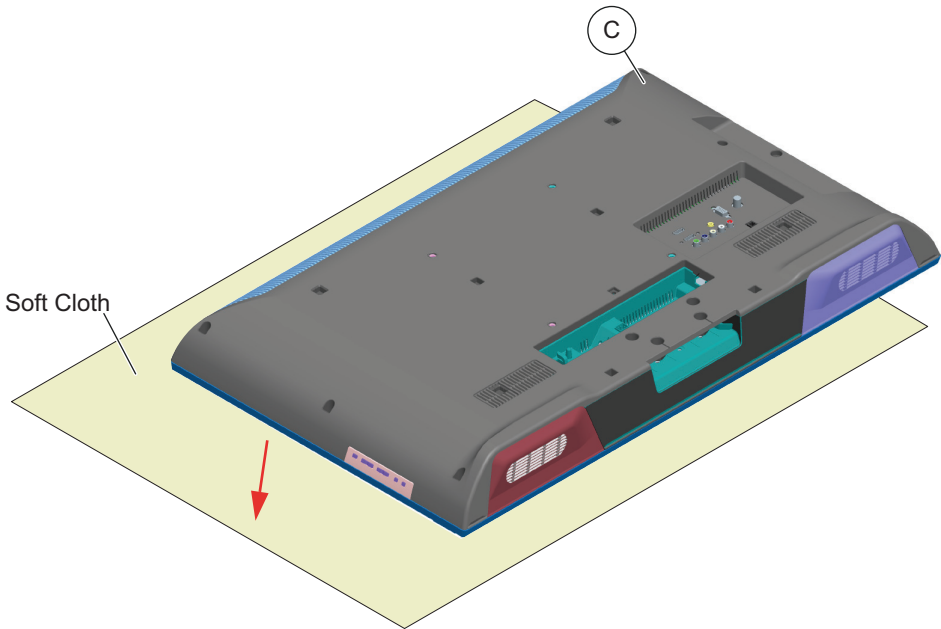
SECTION 1 - DISASSEMBLY/PART NUMBER INFORMATION

1-1. TABLE-TOP STAND ASSEMBLY REMOVAL

- Ⓐ Remove screws from Table-Top Stand Assembly
 - 3 from KDL-22BX325 Only
 - 4 from All Models except KDL-22BX325
- Ⓑ Lift up TV set to detach from Table-Top Stand Assembly



- Ⓒ Gently place the TV set face down onto a soft cloth



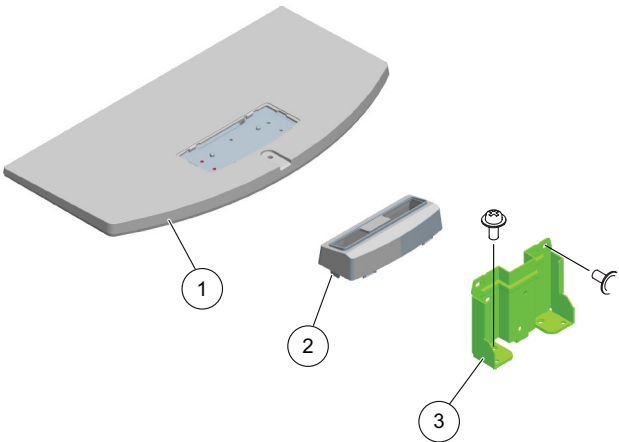
Components not identified by a part number or description are not stocked because they are seldom required for routine service.

NOTE: The components identified by shading and ⚠ mark are critical for safety. Replace only with part number specified.

The component parts of an assembly are indicated by the reference numbers in the far right column of the parts list and within the dotted lines of the diagram.

* Items marked with an asterisk are not stocked since they are seldom required for routine service. Expect some delay when ordering these components.

NOTE: The components identified by a red outline and a 🔒 mark contain confidential information. Specific instructions must be adhered to whenever these components are repaired and/or replaced. See Appendix A: Encryption Key Components in the back of this manual.



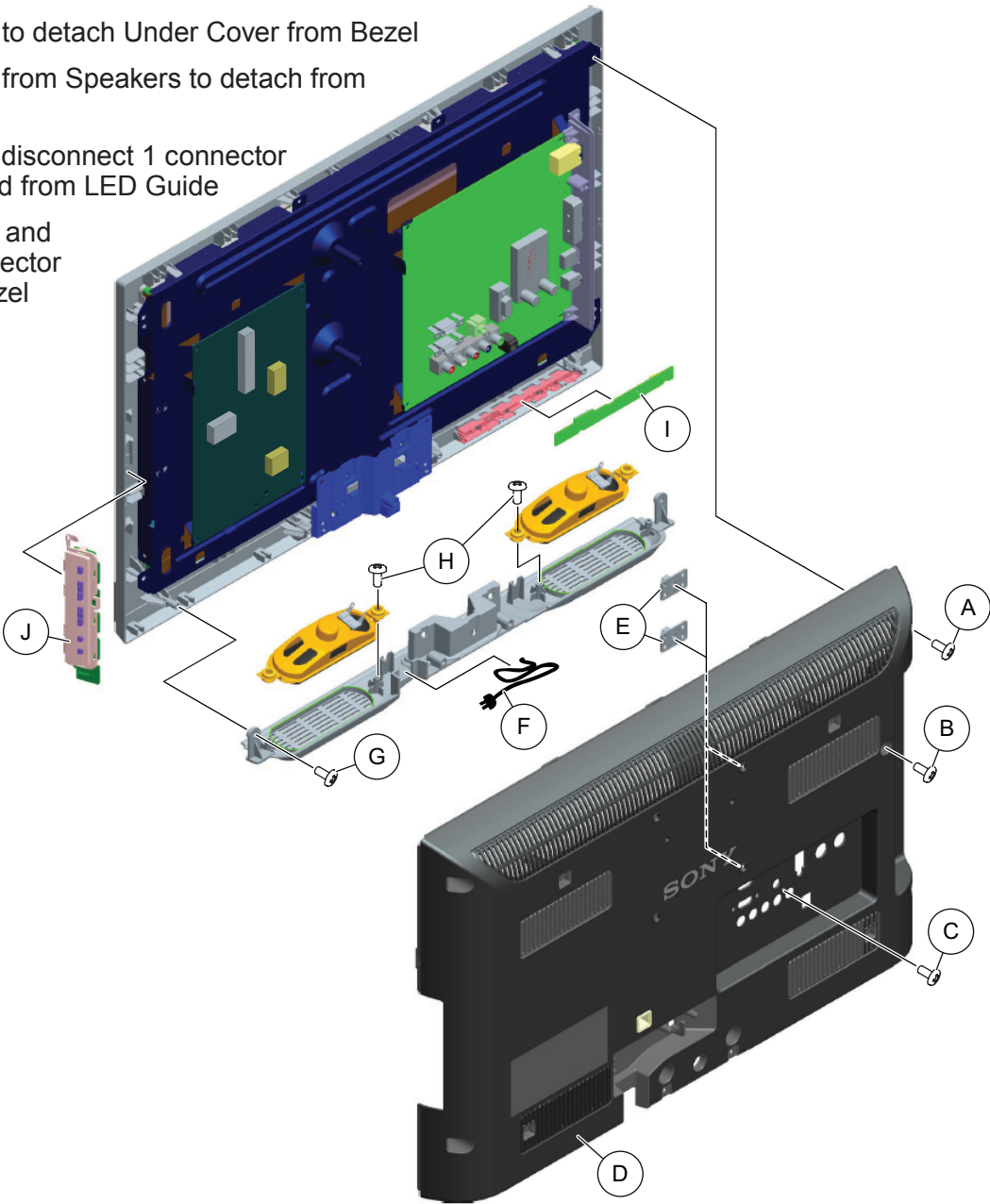
REF. NO.	PART NO.	DESCRIPTION	[ASSEMBLY INCLUDES]	REF. NO.	PART NO.	DESCRIPTION	[ASSEMBLY INCLUDES]
1	X-2580-960-1	BASE (S3B) ASSEMBLY (KDL-22BX325 ONLY)		3	4-264-274-01	NECK (S5) (KDL-22BX325 ONLY)	
1	X-2580-961-1	BASE (M3B) ASSEMBLY (KDL-32BX325/32BX425 ONLY)		3	4-264-282-01	NECK (M3B) (KDL-32BX325/32BX326/32BX425 ONLY)	
1	X-2546-085-2	BASE (M5B) ASSEMBLY (KDL-32BX326 ONLY)		3	4-264-293-01	NECK (ML3B) (KDL-40BX425 ONLY)	
1	X-2580-962-1	BASE (ML3B) ASSEMBLY (KDL-40BX425 ONLY)					
2	4-264-254-01	COVER, NECK (S3B) (KDL-22BX325 ONLY)					
2	4-264-260-01	COVER, NECK (M3B) (KDL-32BX325/32BX326/32BX425 ONLY)					
2	4-264-266-01	COVER, NECK (ML3B) (KDL-40BX425 ONLY)					


DISASSEMBLY/PART NUMBER INFORMATION


1-2. REAR COVER AND SPEAKERS REMOVAL

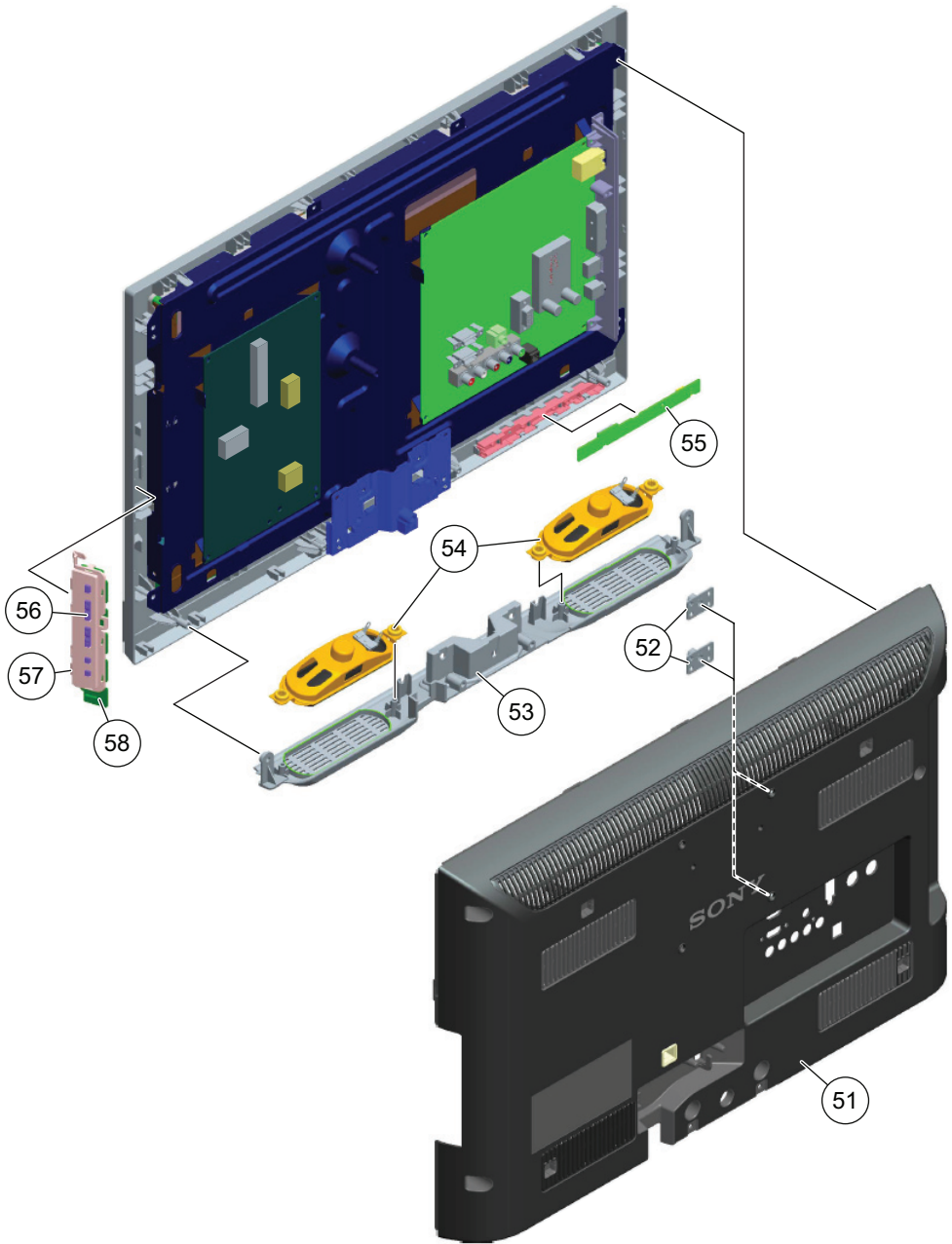
1-2-1. KDL-22BX325 ONLY

- Ⓐ Remove 4 screws from Rear Cover
- Ⓑ Remove 1 screw from Side Jack position
- Ⓒ Remove 1 screw from Terminal Area position
- Ⓓ Lift up Rear Cover to detach from Bezel
- Ⓔ Slide-out 2 Vesa Brackets to detach from Rear Cover
- Ⓕ Lift up AC Power Cord and disconnect 1 connector from LIPS22 Board to detach from Under Cover
- Ⓖ Remove 2 screws to detach Under Cover from Bezel
- Ⓗ Remove 4 screws from Speakers to detach from Under Cover
- Ⓘ Release clips and disconnect 1 connector to detach H1 Board from LED Guide
- Ⓙ Lift up Switch Unit and disconnect 1 connector to detach from Bezel




NOTE: The components identified by shading and  mark are critical for safety. Replace only with part number specified.


NOTE: The components identified by a red outline and a  mark contain confidential information. Specific instructions must be adhered to whenever these components are repaired and/or replaced. See Appendix A: Encryption Key Components in the back of this manual.



REF. NO.	PART NO.	DESCRIPTION	[ASSEMBLY INCLUDES]	REF. NO.	PART NO.	DESCRIPTION	[ASSEMBLY INCLUDES]
51	4-276-526-01	REAR COVER (GT22)		55	1-857-925-11	H1 BOARD, MOUNTED	
52	4-276-529-01	BRACKET, VESA (22))		56	4-264-270-01	KEY PAD (GT)	
53	4-264-253-01	COVER, UNDER (GT22)		57	4-264-271-01	COVER, KEY (GT)	
54	1-858-604-11	LOUD SPEAKER (3.5X10CM)		58	1-857-926-11	H2 BOARD, MOUNTED	

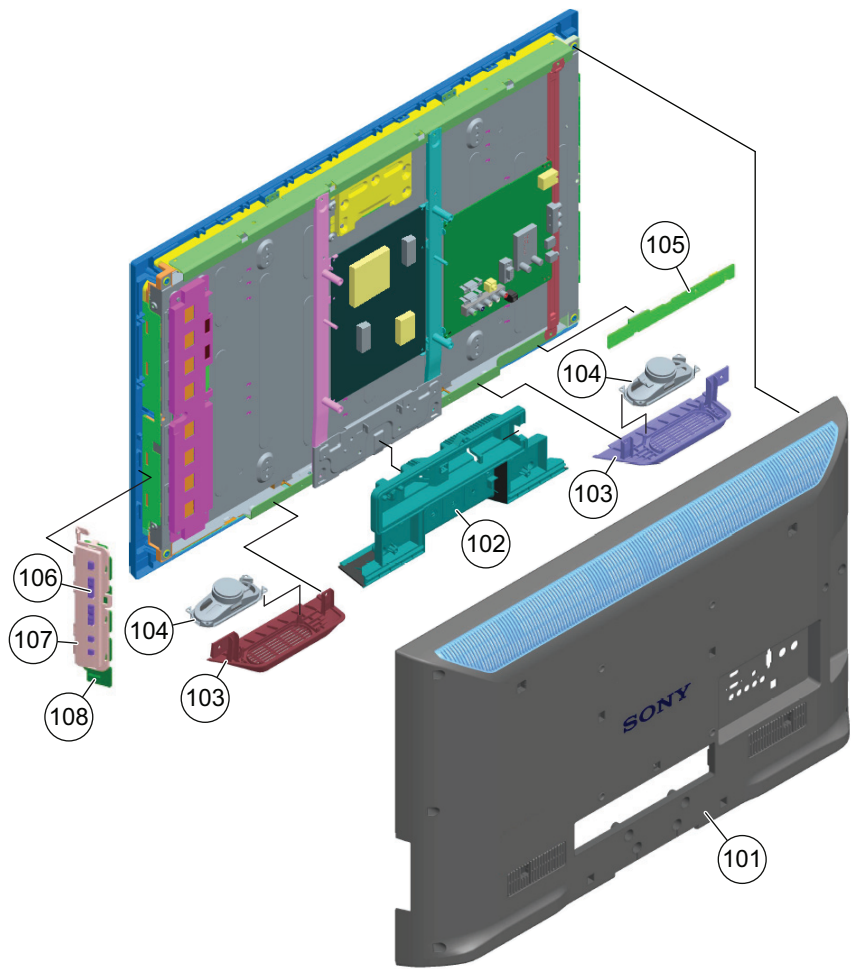
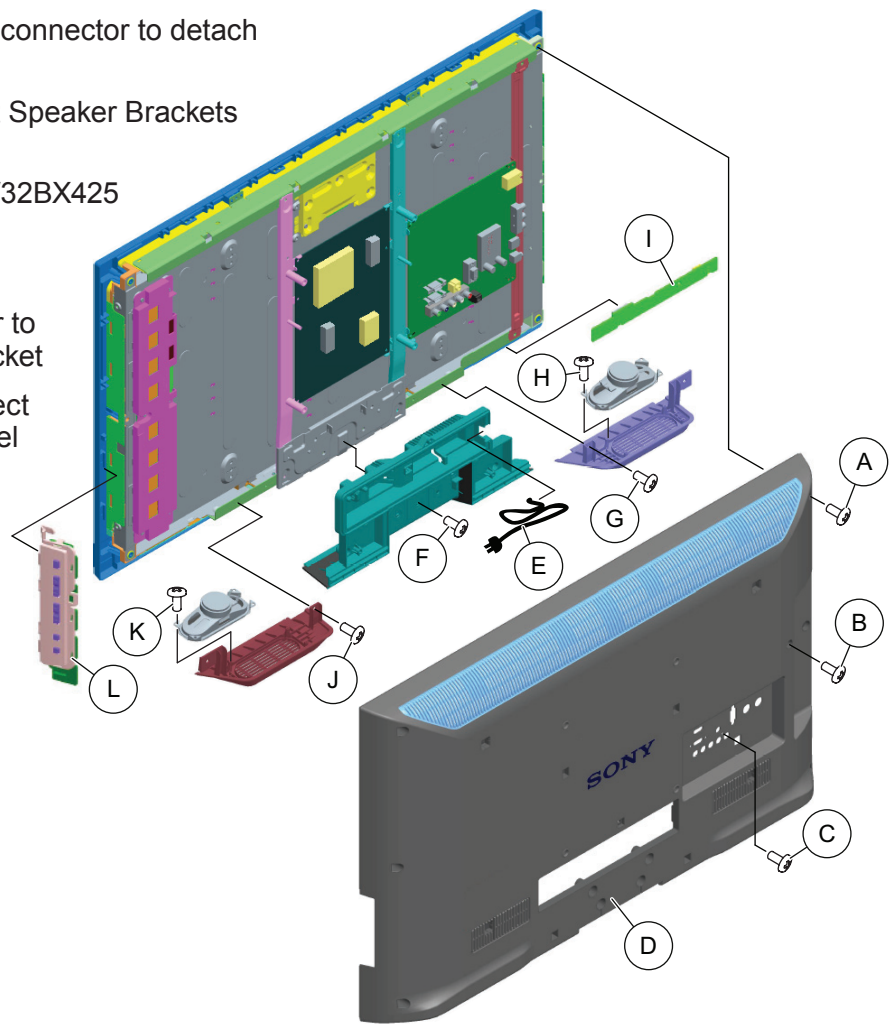
DISASSEMBLY/PART NUMBER INFORMATION

NOTE: The components identified by shading and  mark are critical for safety. Replace only with part number specified.

NOTE: The components identified by a red outline and a  mark contain confidential information. Specific instructions must be adhered to whenever these components are repaired and/or replaced. See Appendix A: Encryption Key Components in the back of this manual.

1-2-2. KDL-32BX325/32BX326/32BX425/40BX425 ONLY

- (A) Remove 11 screws from Rear Cover
- (B) Remove 1 screw from Side Jack position
- (C) Remove 1 screw from Terminal Area position
- (D) Lift up Rear Cover to detach from Bezel
- (E) Lift up AC Power Cord and disconnect 1 connector from GT32/GT40 Board to detach from Under Cover
- (F) Remove screws to detach Under Cover from LCD Panel
5 from KDL-32BX325/32BX326/32BX425 Only
1 from KDL-40BX425 Only
- (G) Remove screws to detach Left Speaker Bracket from LCD Panel
1 from KDL-32BX325/32BX326/32BX425 Only
2 from KDL-40BX425 Only
- (H) Remove 4 screws from Speaker to detach from Left Speaker Bracket
- (I) Release clips and disconnect 1 connector to detach H1 Board from LED Guide
- (J) Remove screws to detach Right Speaker Brackets from LCD Panel
1 from KDL-32BX325/32BX326/32BX425 Only
2 from KDL-40BX425 Only
- (K) Remove 4 screws from Speaker to detach from Right Speaker Bracket
- (L) Lift up Switch Unit and disconnect 1 connector to detach from Bezel



REF. NO.	PART NO.	DESCRIPTION	[ASSEMBLY INCLUDES]	REF. NO.	PART NO.	DESCRIPTION	[ASSEMBLY INCLUDES]
101	4-264-257-01	REAR COVER BARE (GT32)	(KDL-32BX325/32BX326/32BX425 ONLY)	103	4-264-258-01	BRACKET, SP L&R (GT32)	(KDL-32BX325/32BX326/32BX425 ONLY)
101	4-264-263-01	REAR COVER BARE (GT40)	(KDL-40BX425 ONLY)	103	4-264-264-01	BRACKET, SP L&R (GT40)	(KDL-40BX425 ONLY)
102	4-264-259-01	COVER, UNDER (GT32)	(KDL-32BX325/32BX326/32BX425 ONLY)	104	1-858-341-11	LOUDSPEAKER (4X10CM)	(ALL MODELS EXCEPT KDL-22BX325)
102	4-264-265-01	COVER, UNDER (GT40)	(KDL-40BX425 ONLY)	105	1-857-925-11	H1 BOARD, MOUNTED	
				106	4-264-270-01	KEY PAD (GT)	
				107	4-264-271-01	COVER, KEY (GT)	
				108	1-857-926-11	H2 BOARD, MOUNTED	

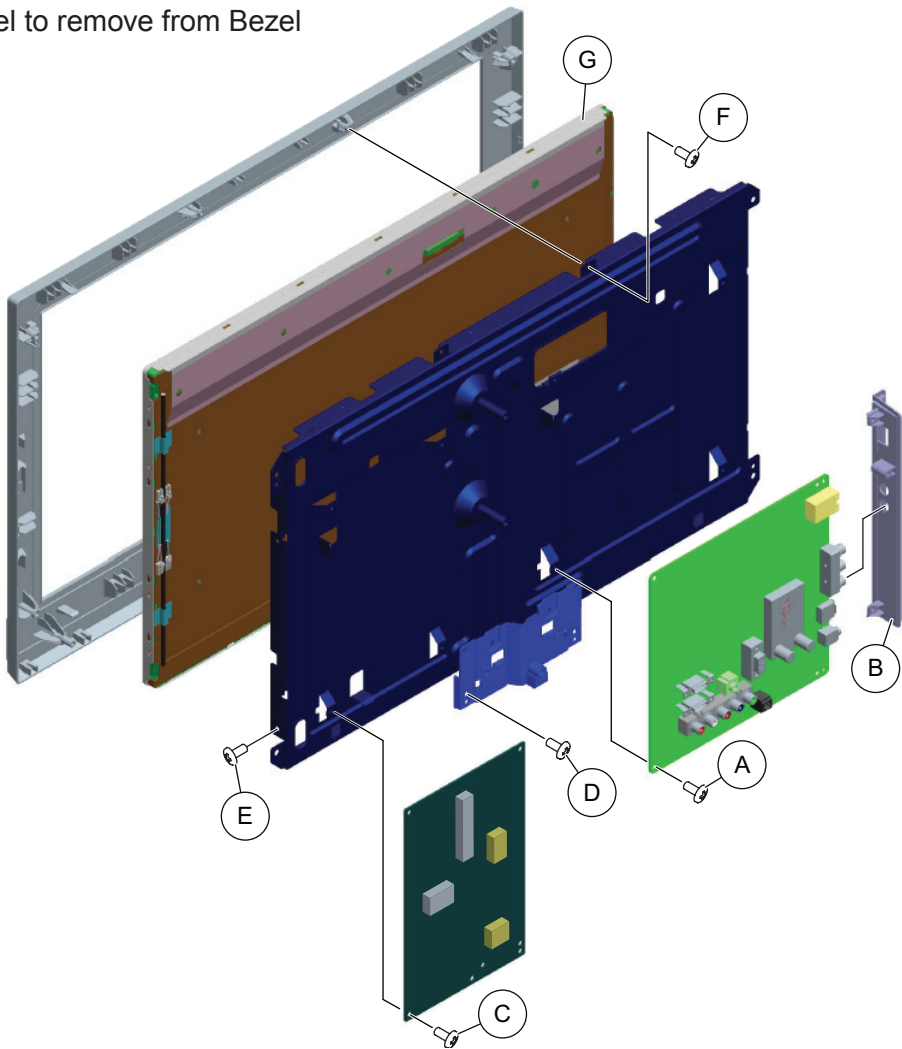
DISASSEMBLY/PART NUMBER INFORMATION

1-3. A BOARD, LIPS22/GT32/GT40 (POWER) BOARD AND LCD PANEL REMOVAL

1-3-1. KDL-22BX325 ONLY

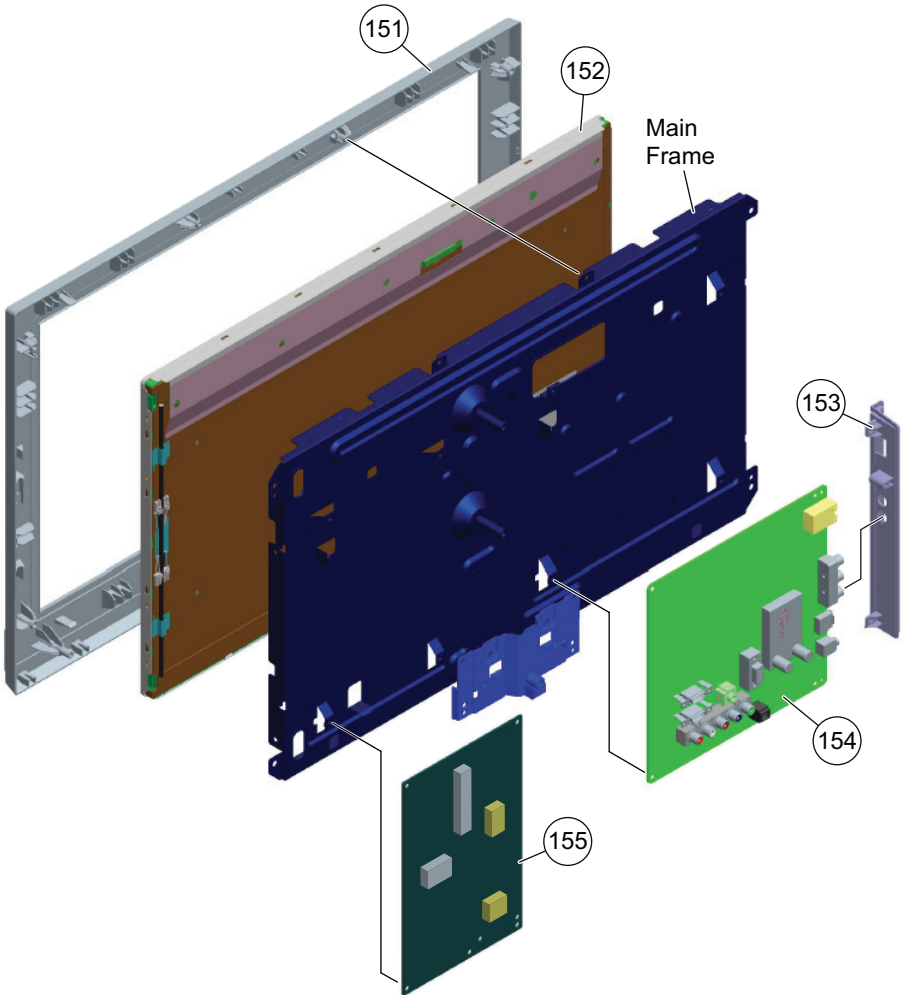
NOTE: The Thermal Pad (22) is not included with the A Board and must be reattached to the replacement A Board when replacing the A Board. Refer to the Miscellaneous Section for Part Number information.

- Ⓐ Remove 4 screws and disconnect 4 connectors from A Board to detach from Main Frame
- Ⓑ Release 2 clips and slide-out Side Jack Bracket to detach from A Board
- Ⓒ Remove 4 screws and disconnect 6 connectors from LIPS22 (Power) Board to detach from Main Frame
- Ⓓ Remove 2 screws from Main Bracket to detach from Bezel
- Ⓔ Remove 4 screws from Main Frame to detach from LCD Panel
- Ⓕ Remove 2 screws from Main Frame to detach from Bezel
- Ⓖ Carefully Lift up LCD Panel to remove from Bezel



NOTE: The components identified by shading and ⚠ mark are critical for safety. Replace only with part number specified.

NOTE: The components identified by a red outline and a 🔒 mark contain confidential information. Specific instructions must be adhered to whenever these components are repaired and/or replaced. See Appendix A: Encryption Key Components in the back of this manual.



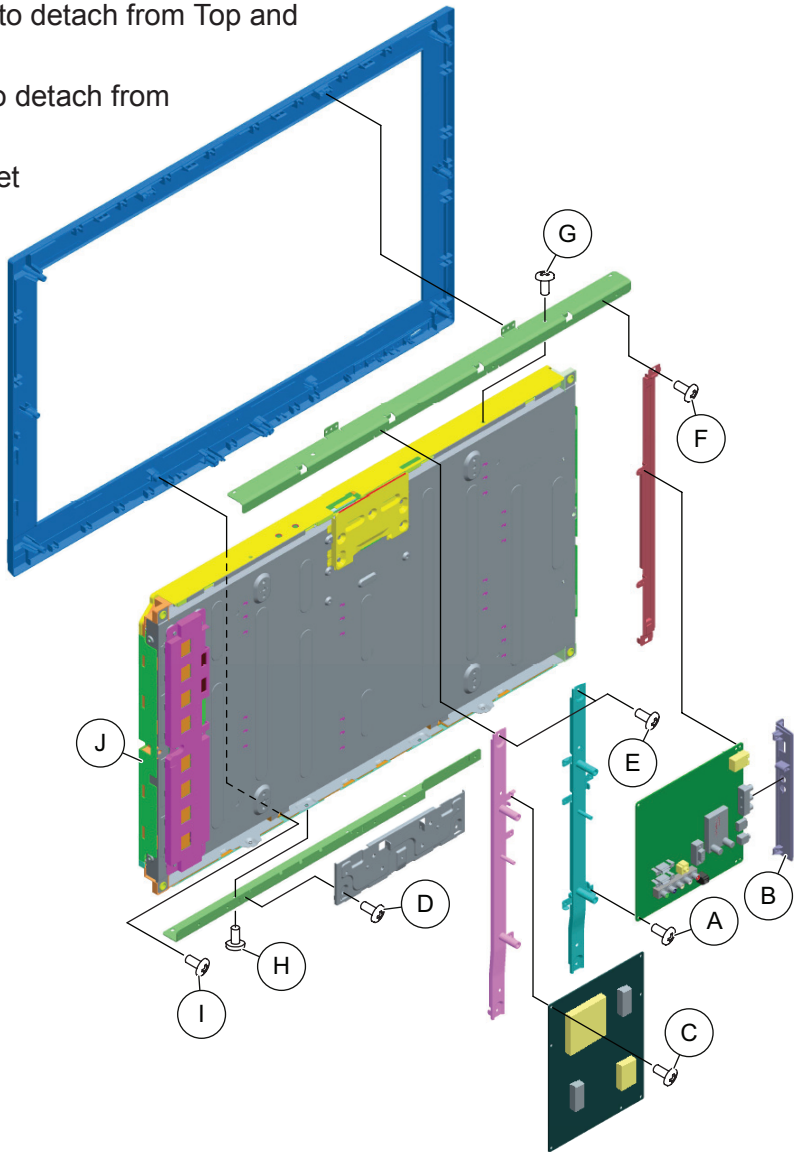
REF. NO.	PART NO.	DESCRIPTION	[ASSEMBLY INCLUDES]	REF. NO.	PART NO.	DESCRIPTION	[ASSEMBLY INCLUDES]
151	4-276-523-01	BEZEL (GT22)		🔒 154	1-857-923-11	A BOARD, COMPLETE	
152	NA	LCD PANEL				After replacing the Main Board or the LCD Panel, you must update the software to the latest version. Instructions for updating the software are included with the software package on the Sony Electronics Service Information website	
		FOR ALL LCD PANEL AND TCON PART NUMBER INFORMATION REFER TO THE LCD PANELS SERVICE MANUAL					
153	4-264-268-01	COVER, IO JACK		155	1-857-927-11	LIPS22 (POWER) BOARD, COMPLETE	

DISASSEMBLY/PART NUMBER INFORMATION

1-3-2. KDL-32BX325/32BX326/32BX425 ONLY

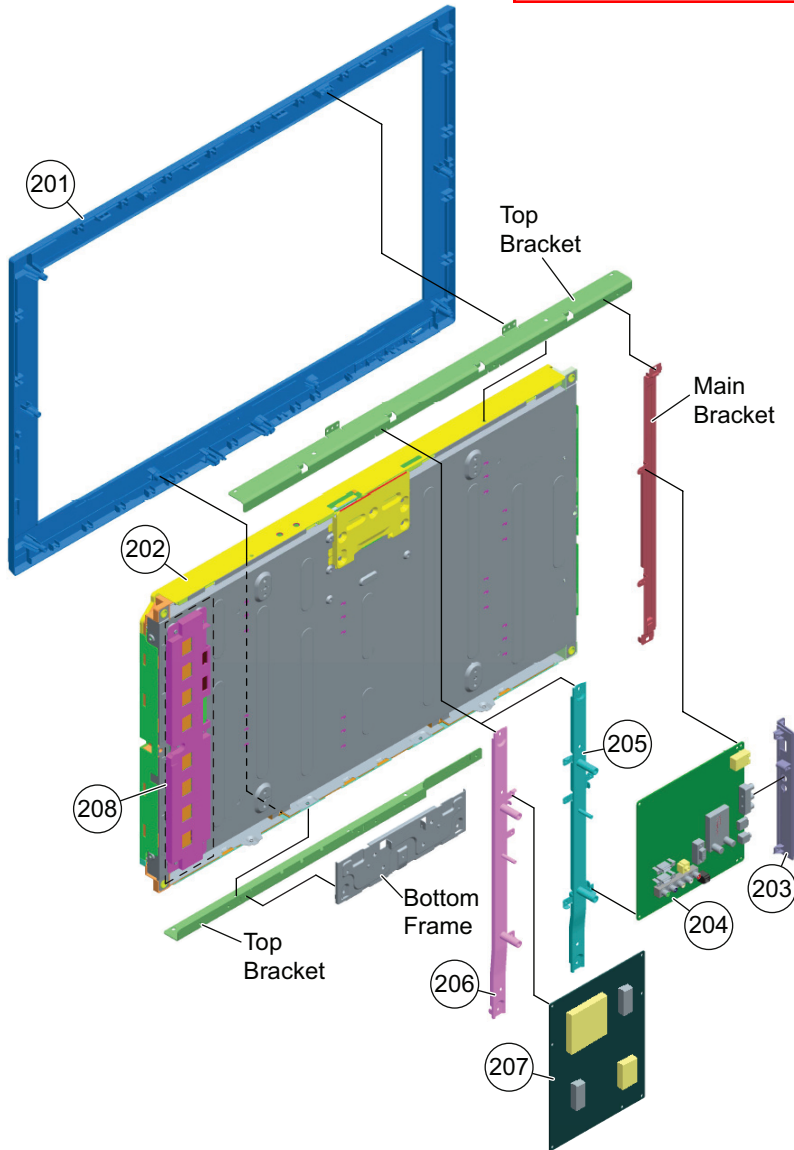
NOTE: The Thermal Pad (32) and Thermal Pad (40) are not included with the A Board and must be reattached to the replacement A Board when replacing the A Board. Refer to the Miscellaneous Section for Part Number information.

- Ⓐ Remove 4 screws and disconnect 4 connectors from A Board to detach from Left Vesa Bracket and Main Bracket
- Ⓑ Release 2 clips and slide-out Side Jack Bracket to detach from A Board
- Ⓒ Remove 6 screws and disconnect 3 connectors from GT32 (Power) Board to detach from Left and Right Vesa Brackets
- Ⓓ Remove 4 screws from Bottom Frame to detach from Bezel and Bottom Bracket
- Ⓔ Remove 2 screws from Right and Left Vesa Brackets to detach from Top Bracket
- Ⓕ Remove 2 screws from Main Bracket to detach from Top and Bottom Bracket
- Ⓖ Remove 4 screws from Top Bracket to detach from LCD Panel and Bezel
- Ⓗ Remove 4 screws from Bottom Bracket to detach from LCD Panel
- Ⓘ Remove 2 screws from LCD Panel to detach from Bezel
- Ⓙ Carefully Lift up LCD Panel to remove from Bezel



NOTE: The components identified by shading and ⚠ mark are critical for safety. Replace only with part number specified.

NOTE: The components identified by a red outline and a 🔒 mark contain confidential information. Specific instructions must be adhered to whenever these components are repaired and/or replaced. See Appendix A: Encryption Key Components in the back of this manual.

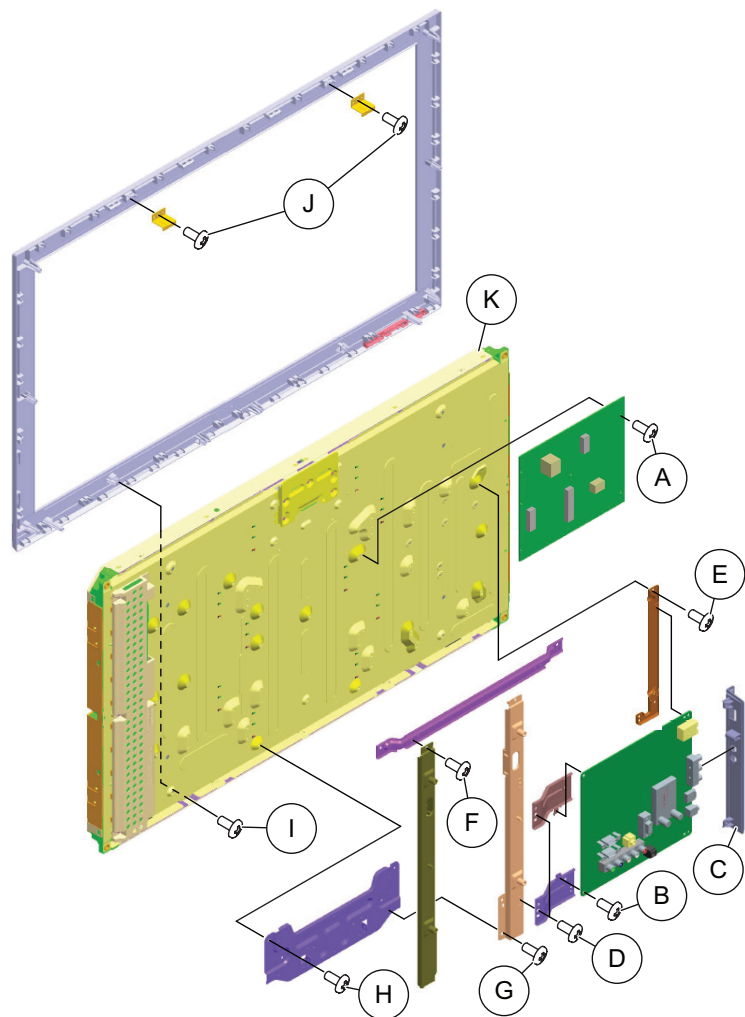



REF. NO.	PART NO.	DESCRIPTION	[ASSEMBLY INCLUDES]	REF. NO.	PART NO.	DESCRIPTION	[ASSEMBLY INCLUDES]
201	4-276-524-01	BEZEL (GT32)		🔒 204	1-857-921-11	A BOARD, COMPLETE (KDL-32BX425 ONLY)	
202	NA	LCD PANEL					
		FOR ALL LCD PANEL AND TCON PART NUMBER INFORMATION REFER TO THE LCD PANELS SERVICE MANUAL					
203	4-264-268-01	COVER, IO JACK					
🔒 204	1-857-922-11	A BOARD, COMPLETE (KDL-32BX325/32BX326 ONLY)					
		After replacing the Main Board or the LCD Panel, you must update the software to the latest version. Instructions for updating the software are included with the software package on the Sony Electronics Service Information website		205	4-264-280-01	BRACKET, VESA L (32)	
				206	4-264-279-01	BRACKET, VESA R (32)	
				207	1-857-928-11	GT32 (POWER) BOARD, COMPLETE	
				208	1-857-930-11	INVERTER BOARD, COMPLETE (KDL-32BX325/32BX326 ONLY)	


DISASSEMBLY/PART NUMBER INFORMATION

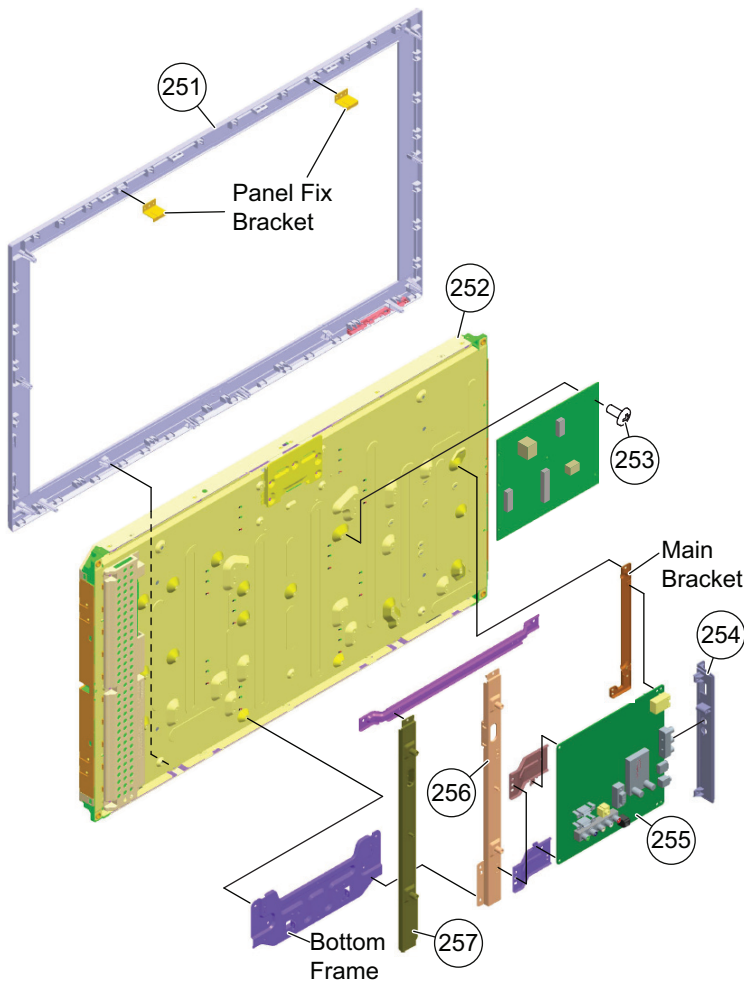
1-3-3. KDL-40BX425 ONLY


- (A) Remove 6 screws and disconnect 3 connectors from GT40 (Power) Board to detach from LCD Panel
- (B) Remove 4 screws and disconnect 4 connectors from A Board to detach from Main Bracket and Main Top and Bottom Brackets
- (C) Release 2 clips and slide-out Side Jack Bracket to detach from A Board
- (D) Remove 4 screws from Main Top and Bottom Brackets to detach from Left Vesa Bracket and LCD Panel
- (E) Remove 2 screws from Main Bracket to detach from LCD Panel
- (F) Remove 2 screws from Vesa Bracket Support to detach from Left and Right Vesa Brackets
- (G) Remove 8 screws from Left and Right Vesa Bracket to detach from Bottom Frame and LCD Panel
- (H) Remove 6 screws from Bottom Frame to detach from LCD Panel and Bezel
- (I) Remove 2 screws from LCD Panel to detach from Bezel
- (J) Remove 2 screws to detach Panel Fix Brackets from Bezel
- (K) Carefully Lift up LCD Panel to remove from Bezel



NOTE: The components identified by shading and  mark are critical for safety. Replace only with part number specified.

NOTE: The components identified by a red outline and a  mark contain confidential information. Specific instructions must be adhered to whenever these components are repaired and/or replaced. See Appendix A: Encryption Key Components in the back of this manual.



REF. NO.	PART NO.	DESCRIPTION	[ASSEMBLY INCLUDES]	REF. NO.	PART NO.	DESCRIPTION	[ASSEMBLY INCLUDES]
251	4-276-525-01	BEZEL (GT40)			255	1-857-921-11	A BOARD, COMPLETE
252	NA	LCD PANEL			After replacing the Main Board or the LCD Panel, you must update the software to the latest version. Instructions for updating the software are included with the software package on the Sony Electronics Service Information website		
	FOR ALL LCD PANEL AND TCON PART NUMBER INFORMATION REFER TO THE LCD PANELS SERVICE MANUAL						
253	1-857-929-11	GT40 (POWER) BOARD, COMPLETE					
254	4-264-268-01	COVER, IO JACK			256	4-264-285-01	BRACKET, VESA R (40)
				257	4-264-286-01	BRACKET, VESA R (40)	

DISASSEMBLY/PART NUMBER INFORMATION

1-4. CLEANING THE LCD PANEL ASSEMBLY

CAUTION: When cleaning the TV, be sure to unplug the power cord to avoid any chance of electric shock.

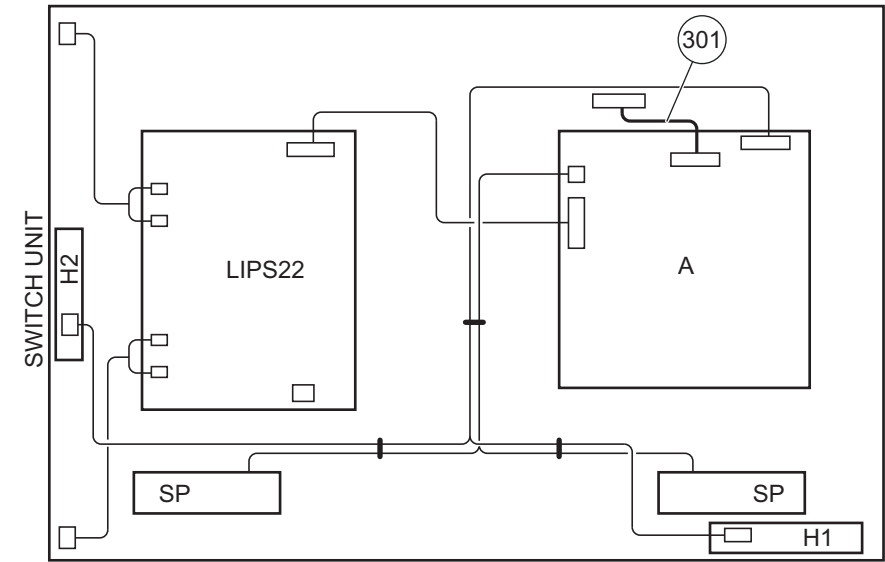
Clean the cabinet of the TV with a dry soft cloth.

Wipe the LCD screen gently with a soft cloth.

- ◆ Stubborn stains may be removed with a cloth slightly moistened with a solution of mild soap and warm water.
- ◆ If using a chemically pretreated cloth, please follow the instruction provided on the package.
- ◆ Never use strong solvents such as a thinner, alcohol or benzene for cleaning.
- ◆ Periodic vacuuming of the ventilation openings is recommended to ensure the proper ventilation.

1-5. CONNECTORS

1-5-1. KDL-22BX325 ONLY



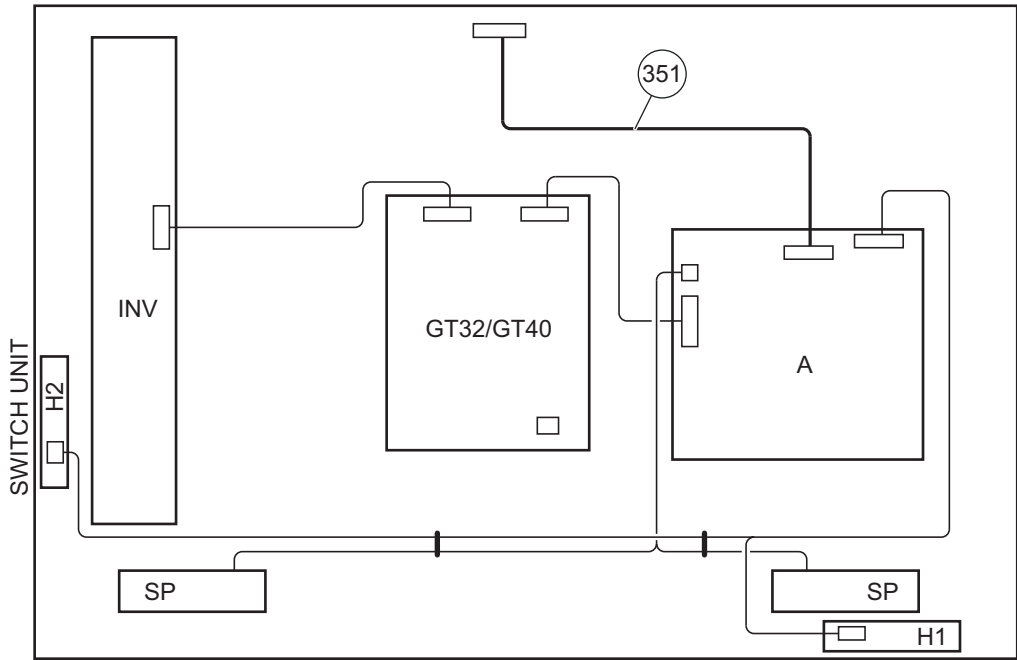
REF. NO.	PART NO.	DESCRIPTION	[ASSEMBLY INCLUDES]	REF. NO.	PART NO.	DESCRIPTION	[ASSEMBLY INCLUDES]
301	1-910-103-67	(LVDS) CONNECTOR ASSEMBLY 22WXGA (KDL-22BX325 ONLY)					

NOTE: The components identified by shading and mark are critical for safety. Replace only with part number specified.

NOTE: The components identified by a red outline and a mark contain confidential information. Specific instructions must be adhered to whenever these components are repaired and/or replaced. See Appendix A: Encryption Key Components in the back of this manual.

1-5-2. KDL-32BX325/32BX326/32BX425/40BX425 ONLY

Note: KDL-32BX425 and KDL-40BX425 have an external TCON. The Illustration below is for KDL-32BX325 and KDL-32BX326 with an internal TCON.



REF. NO.	PART NO.	DESCRIPTION	[ASSEMBLY INCLUDES]	REF. NO.	PART NO.	DESCRIPTION	[ASSEMBLY INCLUDES]
351	1-910-103-65	(LVDS) CONNECTOR ASSEMBLY 32WXGA FFC (KDL-32BX325/32BX326 ONLY)					
351	1-910-103-64	(LVDS) CONNECTOR ASSEMBLY 32FHD (KDL-32BX425 ONLY)					
351	1-910-103-66	(LVDS) CONNECTOR ASSEMBLY 40FHD (KDL-40BX425 ONLY)					

DISASSEMBLY/PART NUMBER INFORMATION

1-6. ACCESSORIES AND PACKING

	X-2580-963-1	BAG ASSEMBLY, SCREW
⚠	1-839-030-11	CORD, POWER (WITH CORE)
⚠	1-839-031-11	CORD, POWER (WITH CORE) (ALL MODELS EXCEPT KDL-32BX425)
	3-299-071-05	FLYER, SAFETY
	4-270-483-31	MANUAL, INSTRUCTION
*	4-275-368-11	SUPPLEMENT(STAND INSTALLATION)

1-7. MISCELLANEOUS

	7-685-648-79	SCREW +BVTP 3X12 TYPE2 IT-3 (KDL-32BX326 ONLY)
	X-2348-140-3	SUPPORT BELT KIT
	4-276-516-01	TAPE, AL BOTTOM
	4-276-515-01	TAPE, AL SIDE
*	4-276-517-01	THERMAL PAD (22) (Must be reattached when replacing the A Board) (KDL-22BX325 ONLY)
*	4-276-518-01	THERMAL PAD (32) (Must be reattached when replacing the A Board) (KDL-32BX325/BX326/32BX425 ONLY)
*	4-276-519-01	THERMAL PAD (40) (Must be reattached when replacing the A Board) (KDL-40BX425 ONLY)

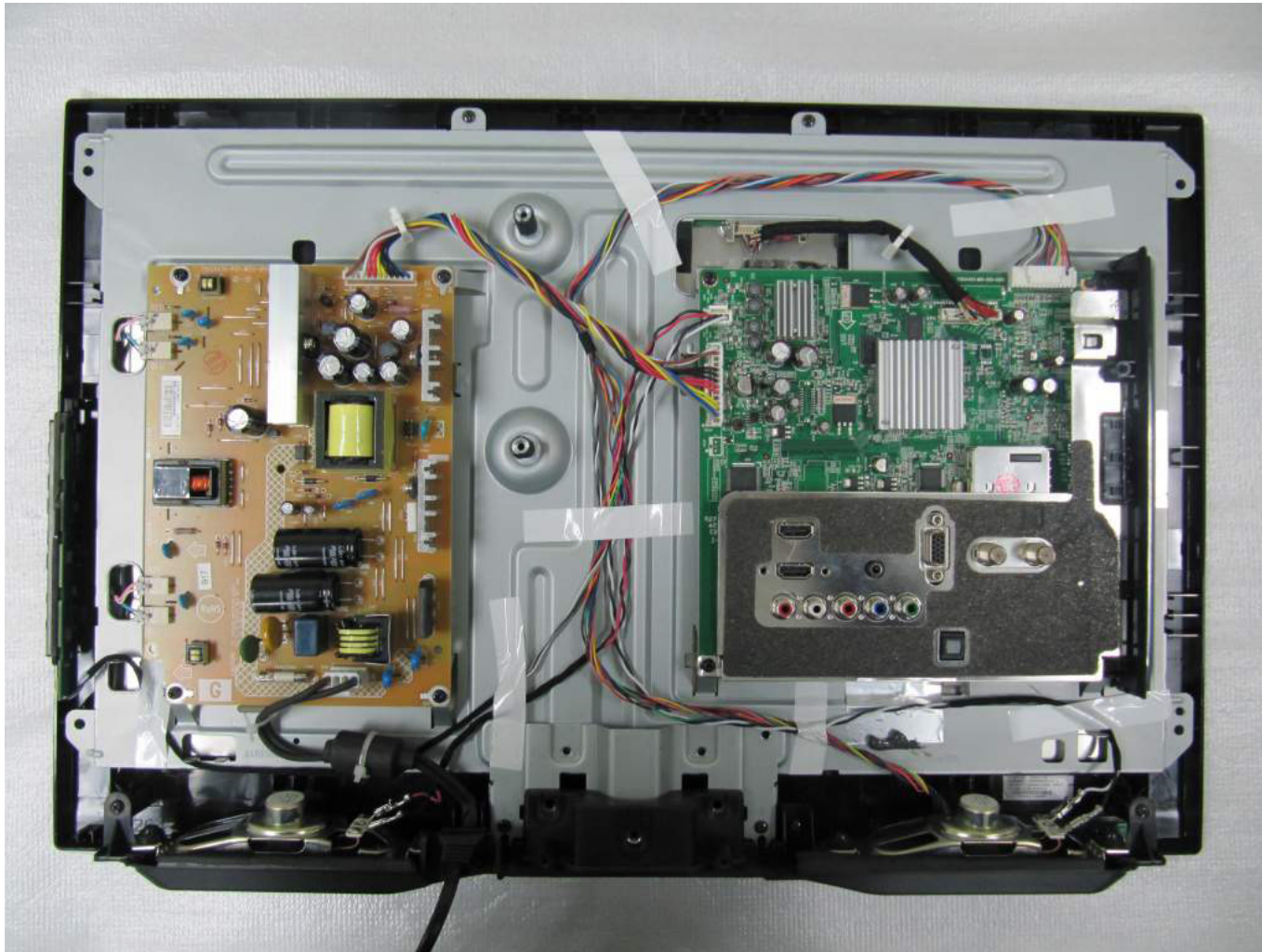
1-8. REMOTE COMMANDER

	1-489-462-11	REMOTE COMMANDER (RM-YD066)
--	--------------	-----------------------------

DISASSEMBLY/PART NUMBER INFORMATION

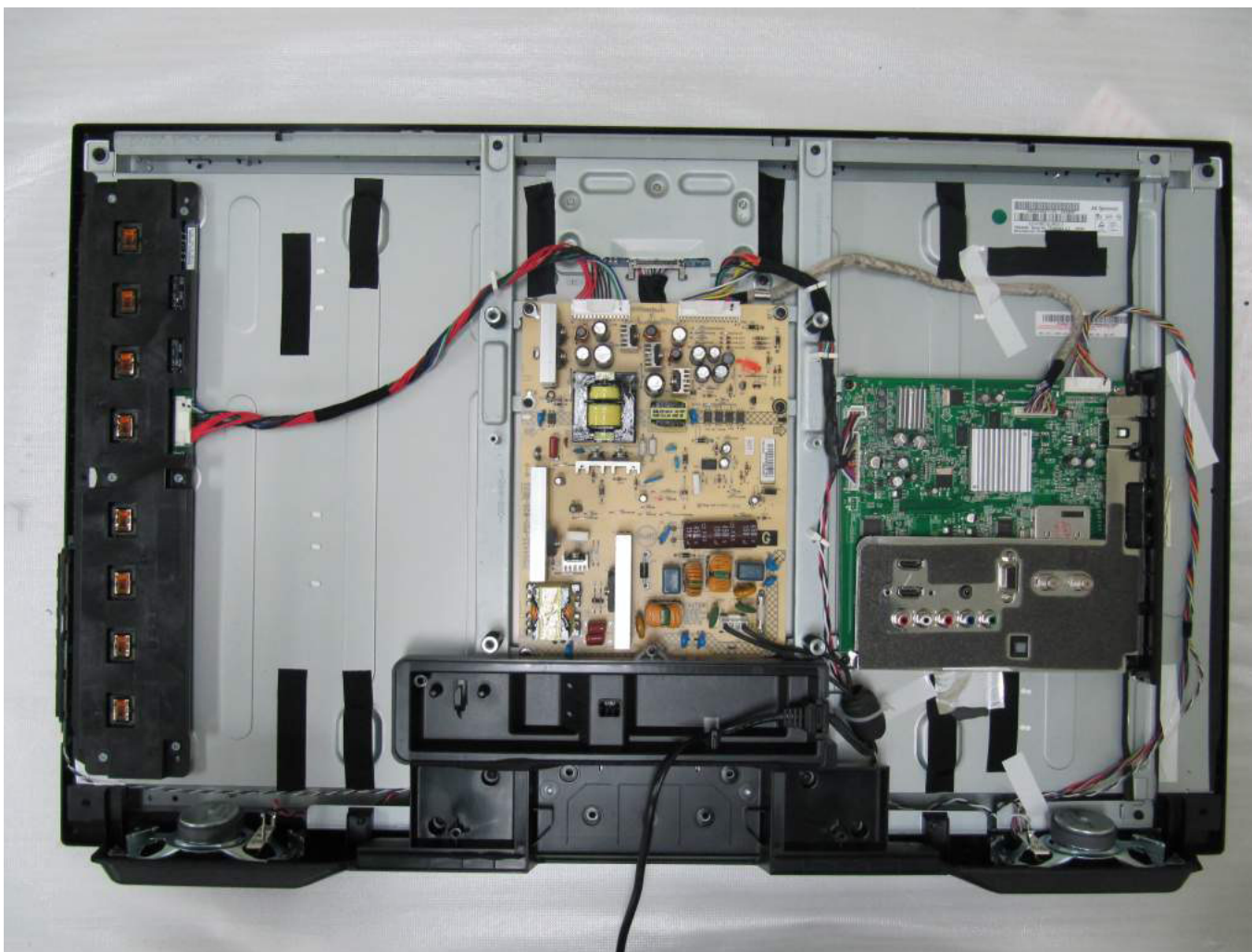
1-9. WIRE DRESSING DIAGRAMS

1-9-1. KDL-22BX325 ONLY



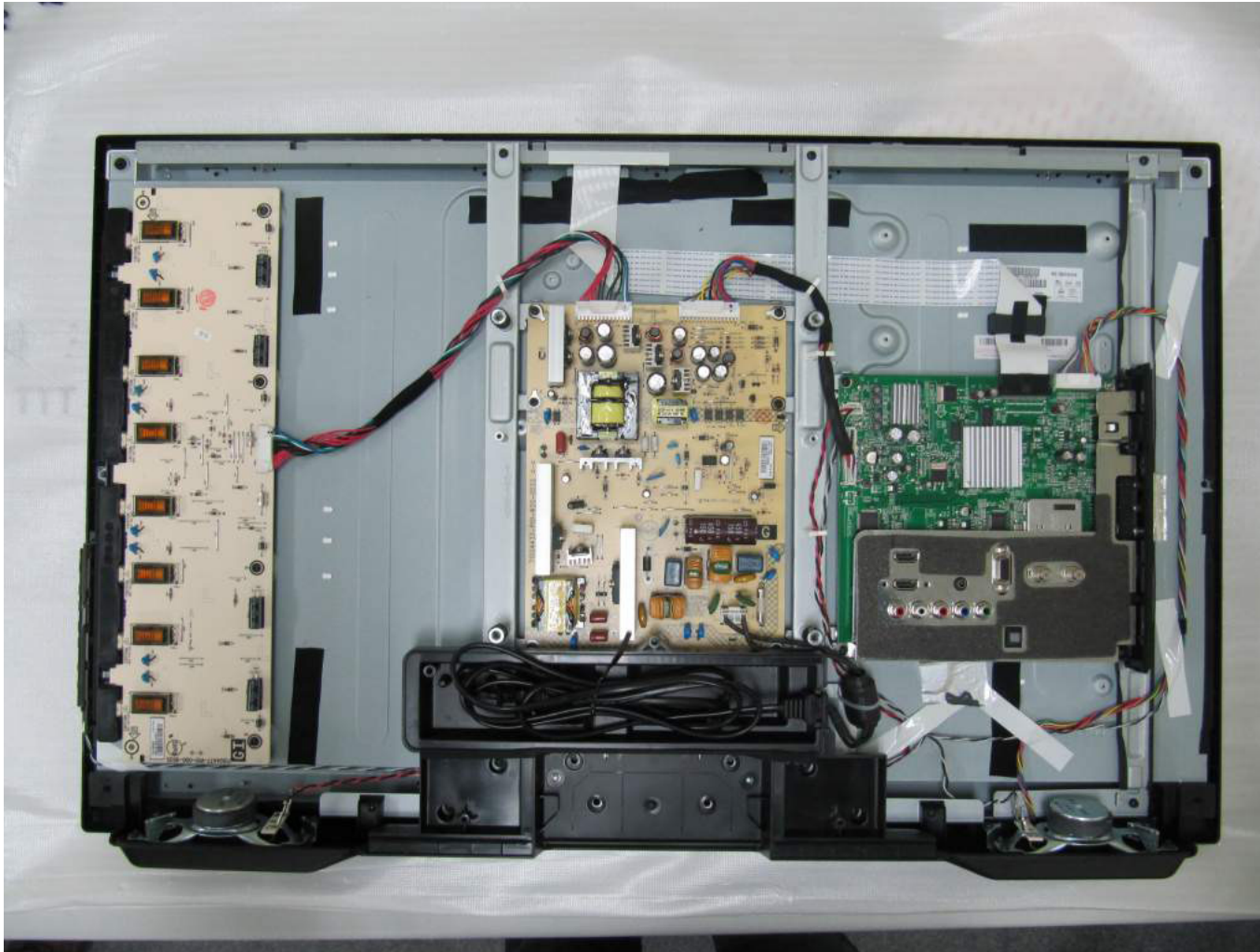
DISASSEMBLY/PART NUMBER INFORMATION

1-9-2. KDL-32BX325/32BX326 ONLY



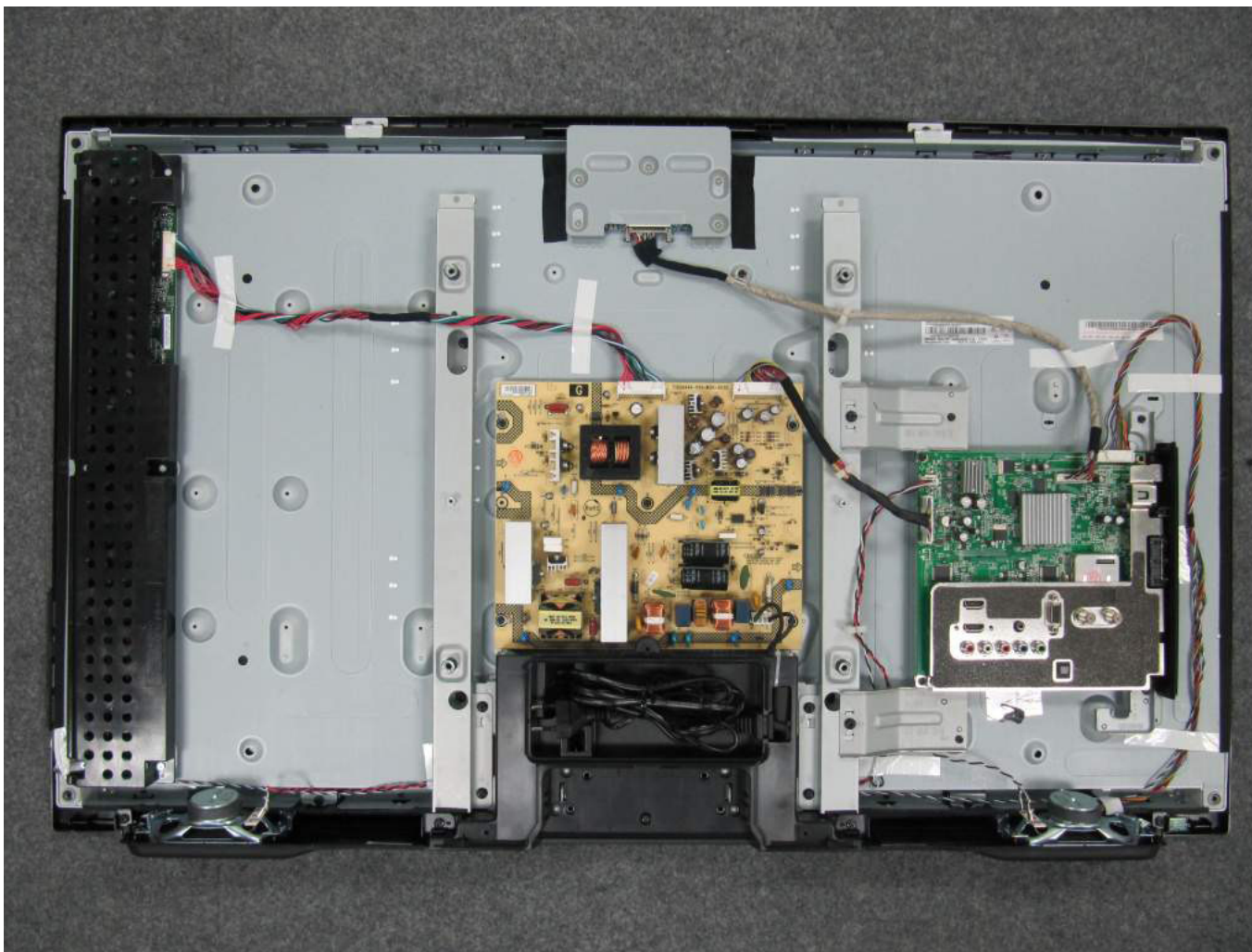
DISASSEMBLY/PART NUMBER INFORMATION

1-9-3. KDL-32BX425 ONLY



DISASSEMBLY/PART NUMBER INFORMATION

1-9-4. KDL-40BX425 ONLY



SECTION 2 - SERVICE ADJUSTMENTS

OVERVIEW

The 2011 models utilize a “generic” type main board, therefore certain service adjustments settings must be confirmed when either the main Board, LCD Panel, or TCON Board are replaced.

UPDATING THE SOFTWARE

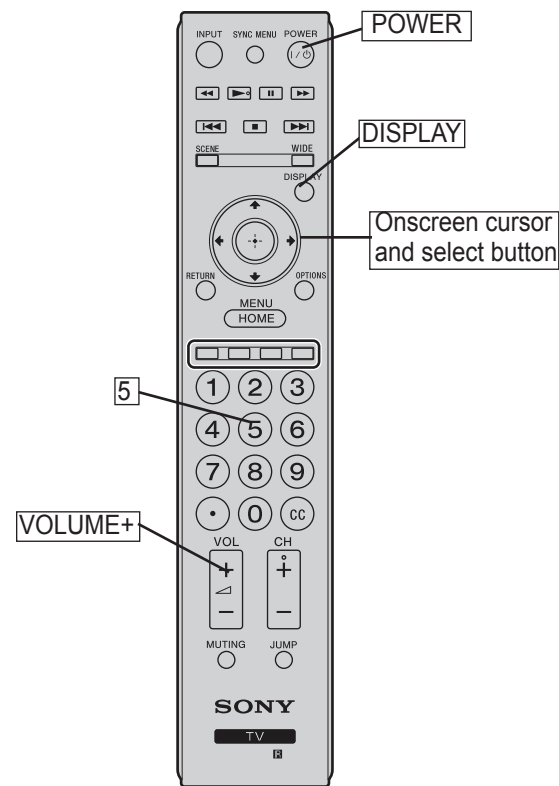
After replacing the main Board, LCD Panel, or TCON Board, you **MUST UPDATE** the SOFTWARE to the latest version.

ACCESSING SERVICE ADJUSTMENT MODE

You can access the Self diagnosis history page from Service Mode.

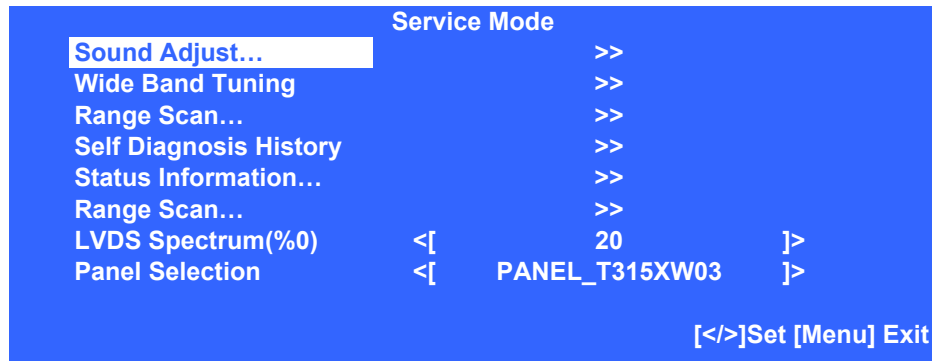
1. TV must be in Standby mode. (Power On).
2. Press the following buttons on the Remote Commander within a second of each other:

DISPLAY → Channel **5** → Volume **+** → **POWER**



RM-YD066

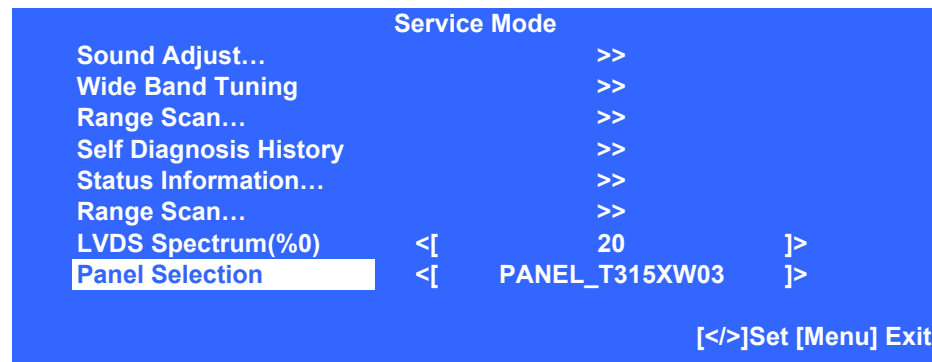
SERVICE ADJUSTMENTS



SELECTING THE PANEL CODE AFTER REPLACING THE PANEL

After replacing the main Board or the LCD Panel, you must update the software to the latest version and then select the Panel ID from Factory Mode.

3. In Service Adjustment Mode, use the button to scroll down to select **Panel Selection**.



4. Using the table below, press the or Onscreen cursor buttons to select the **Panel Selection**.

Model Name	Panel Code
KDL-22BX325	PANEL_LG_LC220
KDL-32BX325	PANEL_T315XW03
KDL-32BX326	PANEL_T315XW03
KDL-32BX425	PANEL_T315HW04
KDL-40BX425	PANEL_T400HW03

5. To exit Service Adjustment Mode without turning Off the TV, press the **RETURN** button.

SECTION 3 - DIAGRAMS

3-1. CIRCUIT BOARDS LOCATION

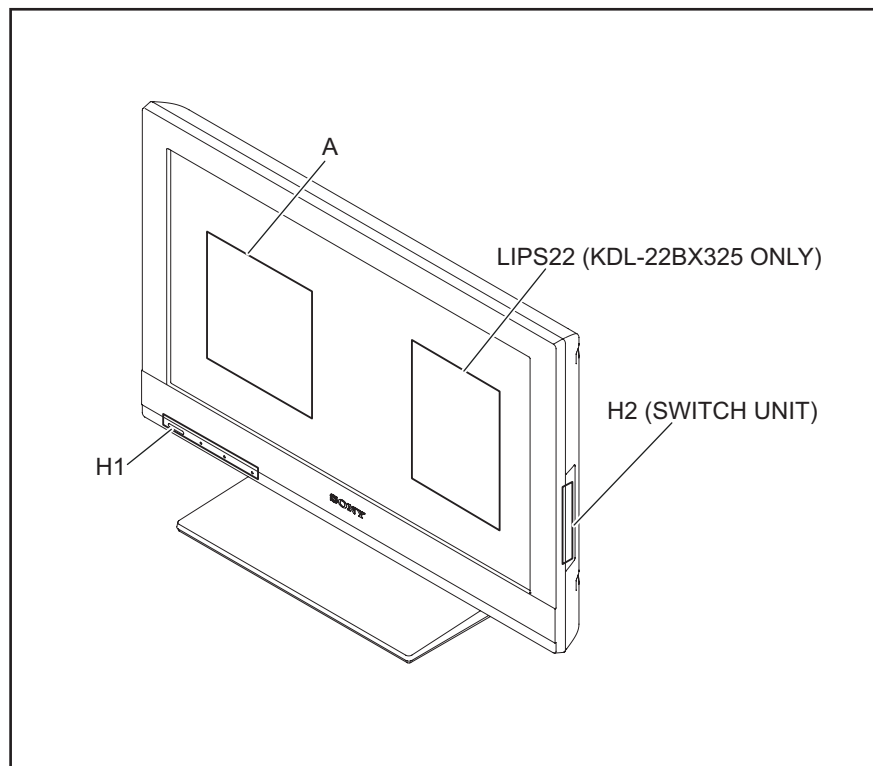


Figure 3-1. KDL-22BX325 Board Layout

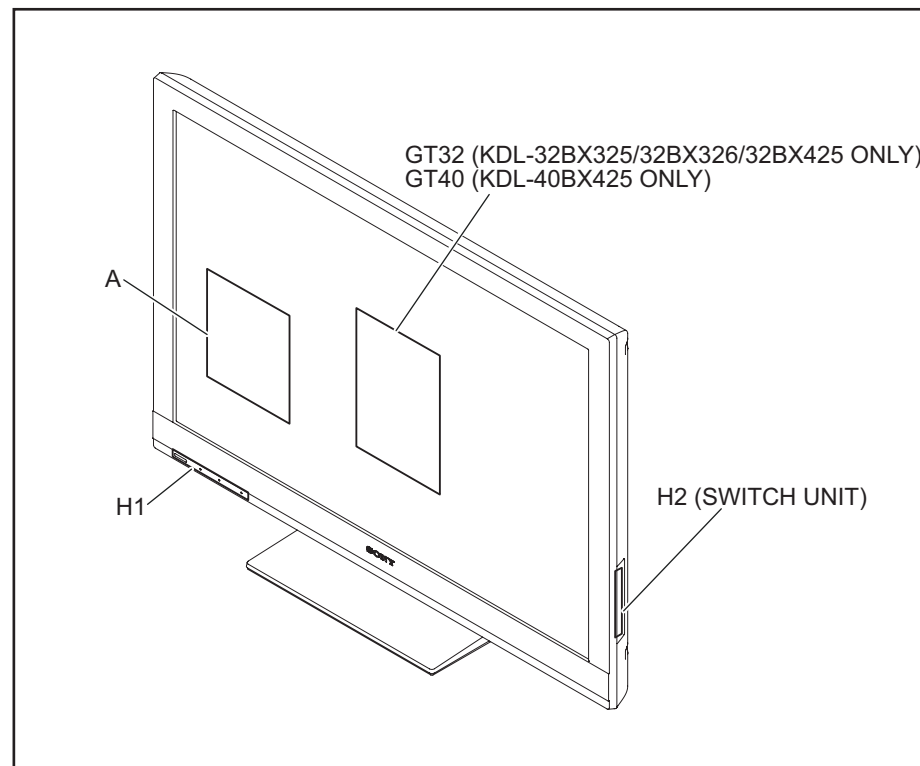
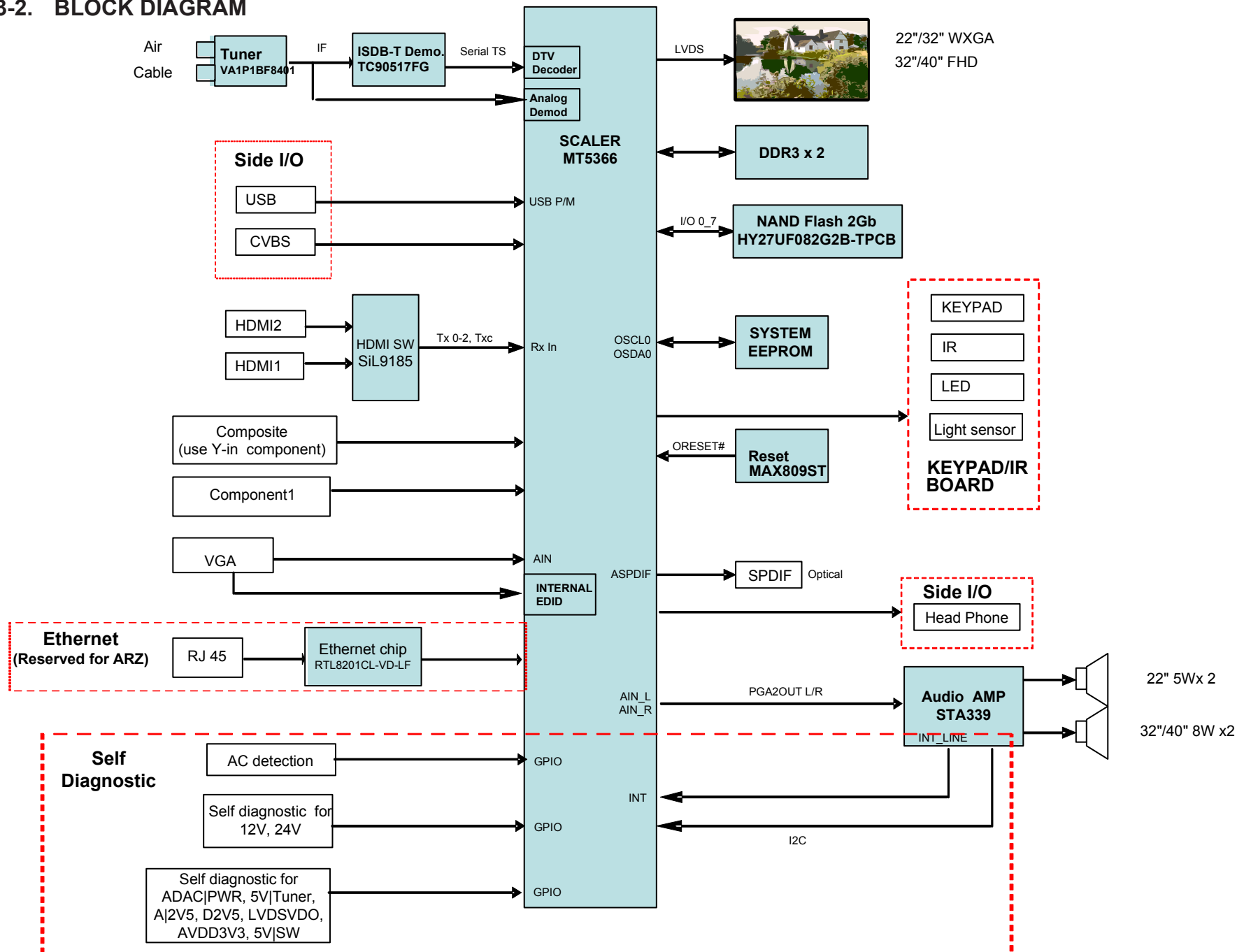
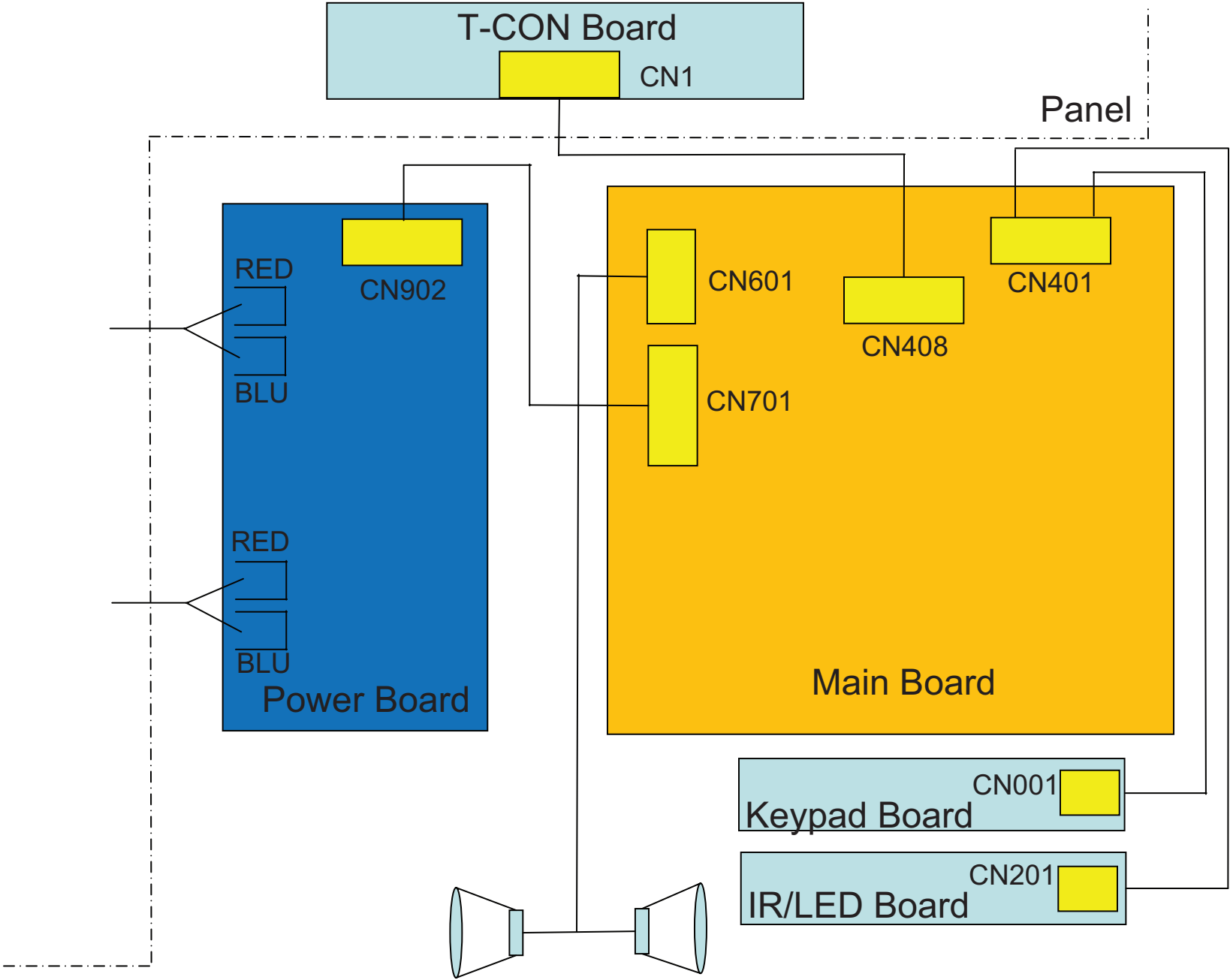


Figure 3-2. KDL-32BX325/32BX326/32BX425/40BX425 Board Layout

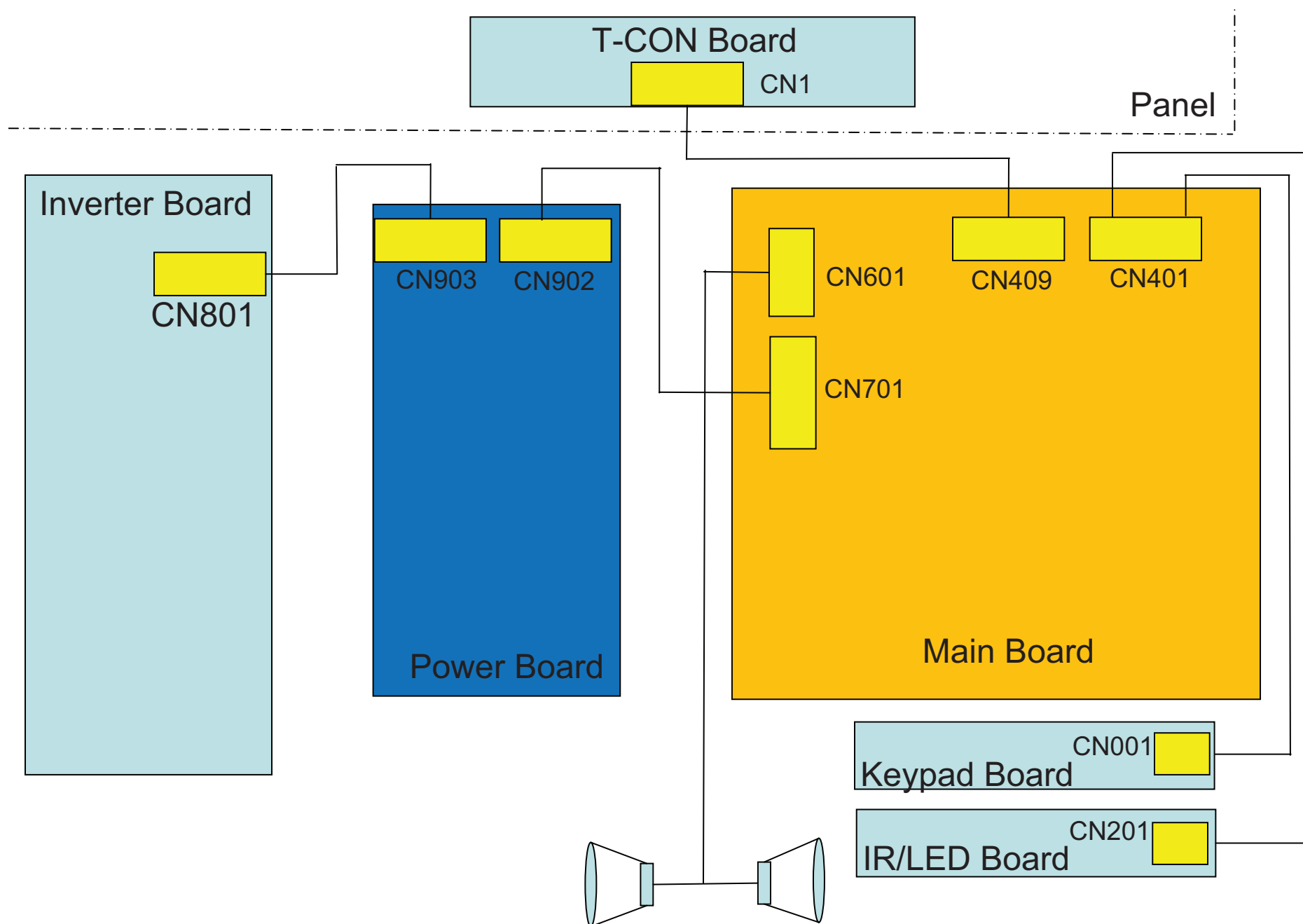
3-2. BLOCK DIAGRAM



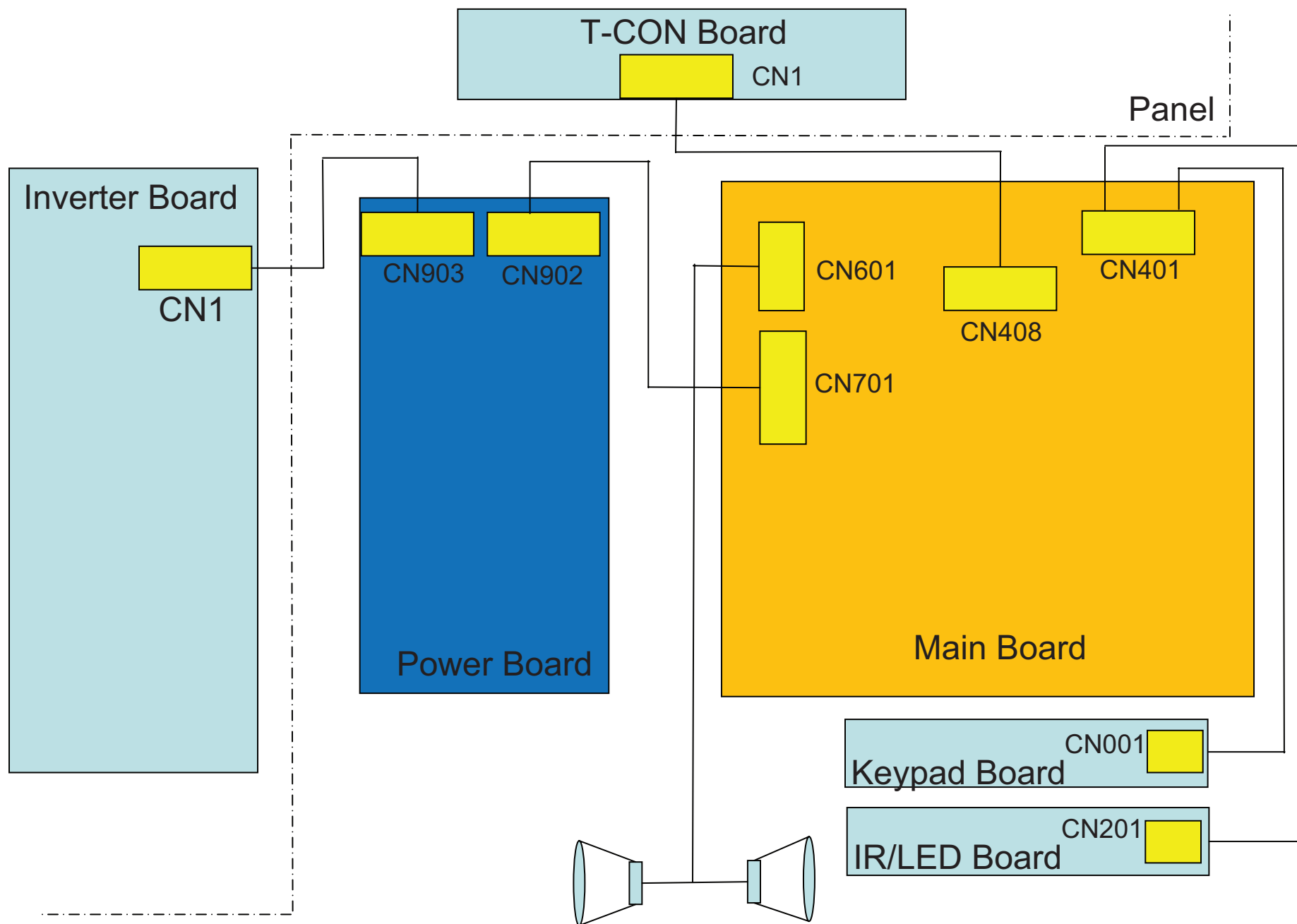
3-3. CONNECTOR DIAGRAMS



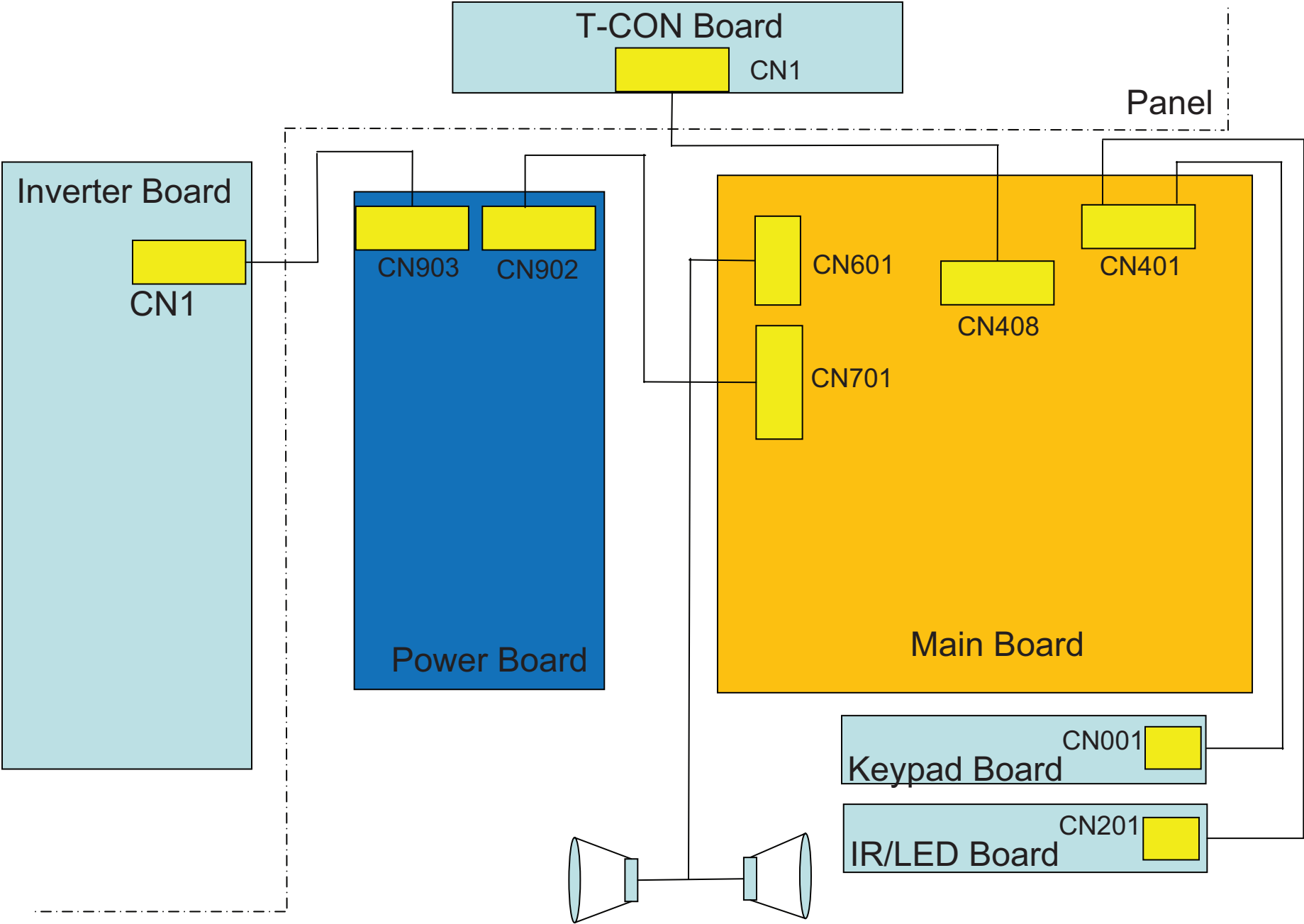
KDL-22BX325 Only




KDL-32BX325/32BX326 Only



KDL-32BX425 Only



KDL-40BX425 Only



SONY® is a trademark of Sony Electronics

Reproduction in whole or part without written permission is prohibited. All rights reserved

Sony Corporation
Sony Technology Center
Technical Services
Service Publications Department

English
2011AJ74WEB-1
Printed in USA
© 2011.1

9-883-856-02

KDL-22BX325/32BX325/32BX326/32BX425/40BX425

31