

DSC-S930

MANUAL DE SERVIÇO

Ver. 1.1 09.2009

Brazilian Model

Memória interna
DA PLACA



Foto: Cor Prata

Link

• ESPECIFICAÇÕES

• DESMONTAGEM

• LISTA DE PEÇAS PARA REPARO

• NOTA DE SERVIÇO

• DIAGRAMA EM BLOCOS

The components identified by mark \triangle or dotted line with mark \triangle are critical for safety. Replace only with part number specified.

Les composants identifiés par une marque \triangle sont critiques pour la sécurité. Ne les remplacer que par une pièce portant le numéro spécifié.

In case of the CCD assy or main board failure, contact your local Sony Service Headquarter for the measures.

CÂMARA DIGITAL

SONY®

ESPECIFICAÇÕES

Camera

[System]

Image device:

7.7 mm (1/2.3 type) color CCD, Primary color filter

Total pixel number of camera:

Approx. 10.3 Megapixels

Effective pixel number of camera:

Approx. 10.1 Megapixels

Lens: 3 zoom lens $f = 6.4 - 19.2$ mm (36 – 108 mm (35 mm film equivalent)) F2.9 (W) – 5.4 (T)

Exposure control: Automatic exposure, Scene Selection (7 modes)

White balance: Automatic, Daylight, Cloudy,

Fluorescent 1, 2, 3, Incandescent, Flash

File format:

Still images: JPEG (DCF Ver. 2.0,

Exif Ver. 2.21) compliant, DPOF compatible

Movies: AVI (Motion JPEG)

Recording media: Internal Memory (approx.

12 MB), "Memory Stick Duo" media

Flash: Flash range (ISO sensitivity

(Recommended Exposure Index) set to Auto):

approx. 0.5 to 3.0 m (1 feet 7 3/4 inches to

9 feet 10 1/8 inches) (W)/approx. 0.5 to 1.5 m

(1 feet 7 3/4 inches to 4 feet 11 1/8 inches) (T)

Recording interval of Burst:

Approx. 1.0 seconds

[Input and Output connectors]

USB communication:

Hi-Speed USB (USB 2.0 compliant)

[LCD screen]

LCD panel: 6.0 cm (2.4 type) TFT drive

Total number of dots: 112 320 (480×234) dots

[Power, general]

Power: LR6 (size AA) Alkaline batteries (2), 3 V

HR15/51:HR6 (size AA) Nickel-Metal

Hydride batteries (2) (sold separately), 2.4 V

ZR6 (size AA) Oxy Nickel Primary Battery

(2) (sold separately), 3 V

Power consumption (during shooting):

1.2 W

Operating temperature: 0 to 40°C (32 to 104°F)

Storage temperature: –20 to +60°C (–4 to +140°F)

Dimensions: 89.5×61.0×26.1 mm

(3 5/8 × 2 1/2 × 1 1/16 inches) (W/H/D, excluding protrusions)

Mass: Approx. 167 g (5.9 oz) (including two batteries and strap, etc.)

Microphone: Monaural

Buzzer

Exif Print: Compatible

PRINT Image Matching III: Compatible



PictBridge: Compatible

Design and specifications are subject to change without notice.


CAUTION

Danger of explosion if battery is incorrectly replaced.
Replace only with the same or equivalent type.
Dispose of used batteries according to the instructions.

SAFETY-RELATED COMPONENT WARNING!!

COMPONENTS IDENTIFIED BY MARK  OR DOTTED LINE WITH MARK  ON THE SCHEMATIC DIAGRAMS AND IN THE PARTS LIST ARE CRITICAL TO SAFE OPERATION. REPLACE THESE COMPONENTS WITH SONY PARTS WHOSE PART NUMBERS APPEAR AS SHOWN IN THIS MANUAL OR IN SUPPLEMENTS PUBLISHED BY SONY.

ATTENTION AU COMPOSANT AYANT RAPPORT À LA SÉCURITÉ!

LES COMPOSANTS IDENTIFÉS PAR UNE MARQUE  SUR LES DIAGRAMMES SCHÉMATIQUES ET LA LISTE DES PIÈCES SONT CRITIQUES POUR LA SÉCURITÉ DE FONCTIONNEMENT. NE REMPLACER CES COMPOSANTS QUE PAR DES PIÈCES SONY DONT LES NUMÉROS SONT DONNÉS DANS CE MANUEL OU DANS LES SUPPLÉMENTS PUBLIÉS PAR SONY.

SAFETY CHECK-OUT

After correcting the original service problem, perform the following safety checks before releasing the set to the customer.

1. Check the area of your repair for unsoldered or poorly-soldered connections. Check the entire board surface for solder splashes and bridges.
2. Check the interboard wiring to ensure that no wires are "pinched" or contact high-wattage resistors.
3. Look for unauthorized replacement parts, particularly transistors, that were installed during a previous repair. Point them out to the customer and recommend their replacement.
4. Look for parts which, through functioning, show obvious signs of deterioration. Point them out to the customer and recommend their replacement.
5. Check the B+ voltage to see it is at the values specified.
6. Flexible Circuit Board Repairing
 - Keep the temperature of the soldering iron around 270°C during repairing.
 - Do not touch the soldering iron on the same conductor of the circuit board (within 3 times).
 - Be careful not to apply force on the conductor when soldering or unsoldering.

Unleaded solder

Boards requiring use of unleaded solder are printed with the lead-free mark (LF) indicating the solder contains no lead.

(Caution: Some printed circuit boards may not come printed with the lead free mark due to their particular size.)



: LEAD FREE MARK

Unleaded solder has the following characteristics.

- Unleaded solder melts at a temperature about 40°C higher than ordinary solder.
Ordinary soldering irons can be used but the iron tip has to be applied to the solder joint for a slightly longer time.
Soldering irons using a temperature regulator should be set to about 350°C.
Caution: The printed pattern (copper foil) may peel away if the heated tip is applied for too long, so be careful!
- Strong viscosity
Unleaded solder is more viscous (sticky, less prone to flow) than ordinary solder so use caution not to let solder bridges occur such as on IC pins, etc.
- Usable with ordinary solder
It is best to use only unleaded solder but unleaded solder may also be added to ordinary solder.

1. NOTA DE SERVIÇO

1-1. MÉTODO PARA COPIAR OU APAGAR O DADO DA MEMÓRIA INTERNA

The data can be copied/erased by the operations on the Setup screen. (When erasing the data, execute formatting the internal memory.)

Note: When replacing the camera, erase the data in internal memory of the board before replacement.

Método para copiar os dados na memória interna

Copy

Copies all images in the internal memory to “Memory Stick Duo” media.

- ① Insert “Memory Stick Duo” media having sufficient free capacity.
- ② Select [Copy] with ▲/▼ on the control button, then press ●.
The message “All data on internal memory will be copied” appears.
- ③ Select [OK] with ▲, then press ●.
Copying starts.

To cancel copying

Select [Cancel] in step ③, then press ●.

- Use a fully charged battery pack. If you attempt to copy image files using a battery pack with little remaining charge, the battery pack may run out, causing copying to fail or possibly corrupting the data.
- You cannot select images to copy.
- The original images in the internal memory are retained even after copying. To delete the contents of the internal memory, remove the “Memory Stick Duo” media after copying, then format the internal memory ([Format] in [Internal Memory Tool]).
- A new folder is created on the “Memory Stick Duo” media and all the data will be copied to it. You cannot choose a specific folder and copy images to it.
- The **DPOF** (Print order) marks on the images are not copied.

Método para Formatar memória interna

This item does not appear when “Memory Stick Duo” media is inserted in the camera.

Format

Formats the internal memory.

- Note that formatting permanently erases all data in the internal memory, including even protected images.
- ① Select [Format] with ▲/▼ on the control button, then press ●.
The message “All data on internal memory will be erased” appears.
 - ② Select [OK] with ▲, then press ●.
Formatting starts.

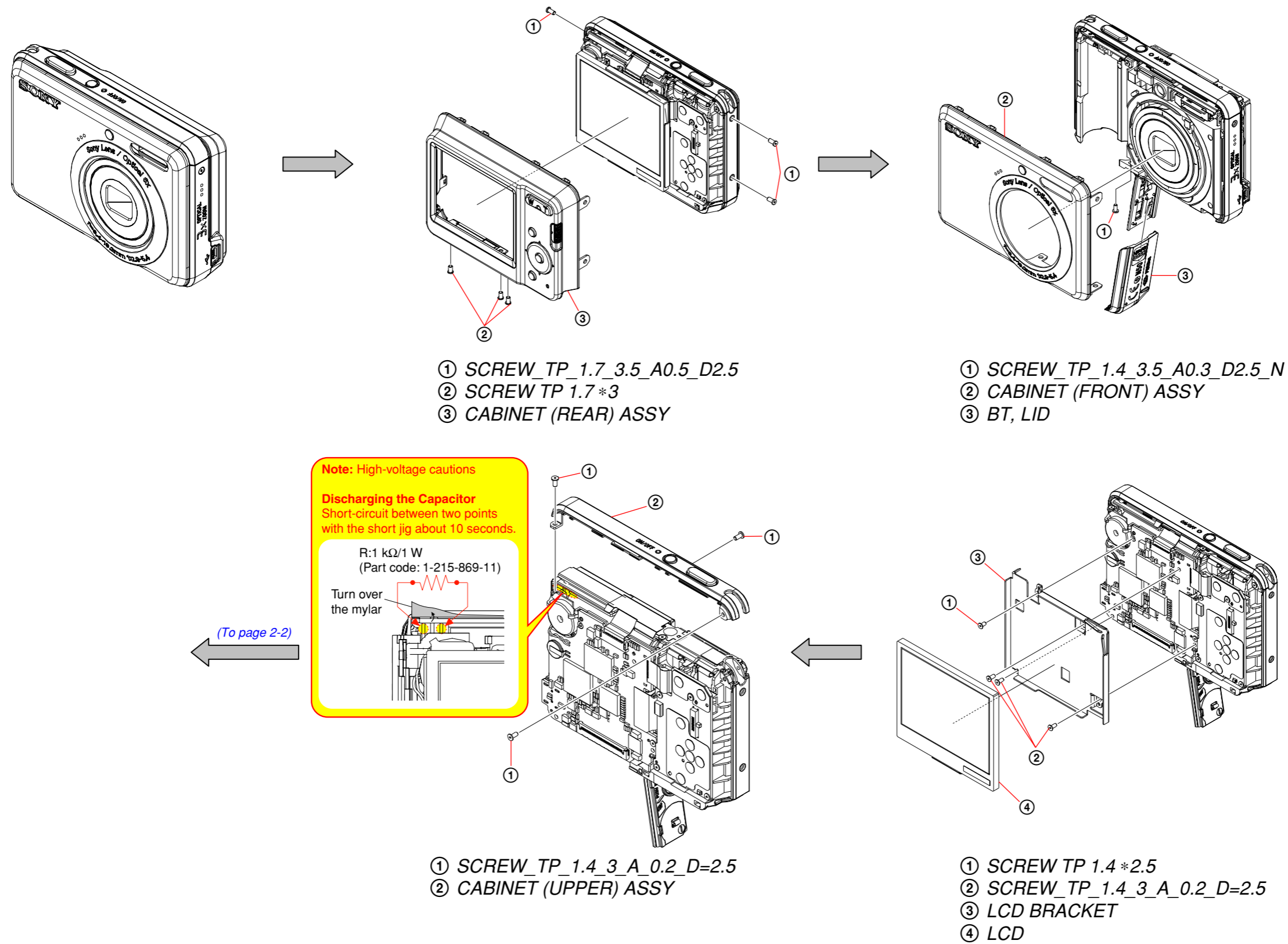
To cancel formatting

Select [Cancel] in step ②, then press ●.

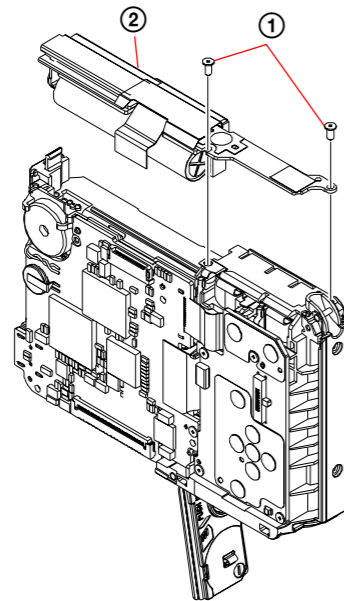
2. DESMONTAGEM

The following flow chart shows the disassembly procedure.

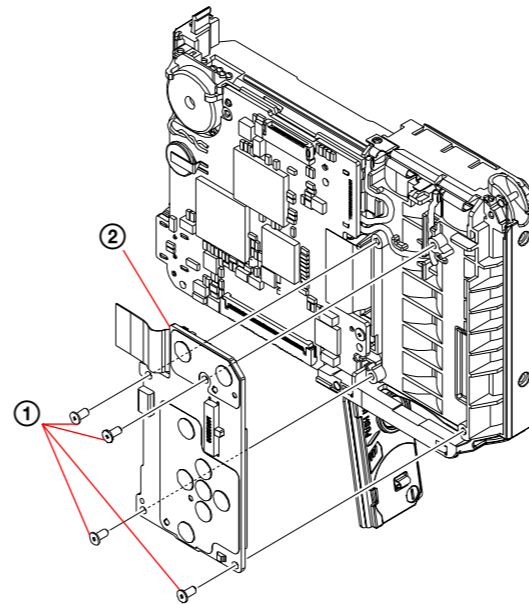
2-1. DESMONTAGEM



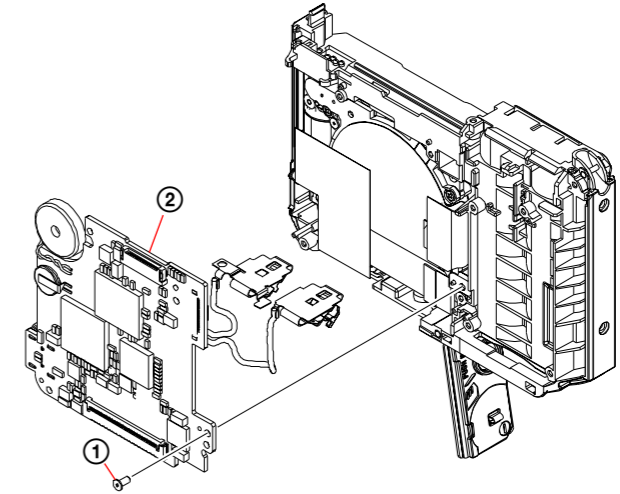
(From page 2-1)



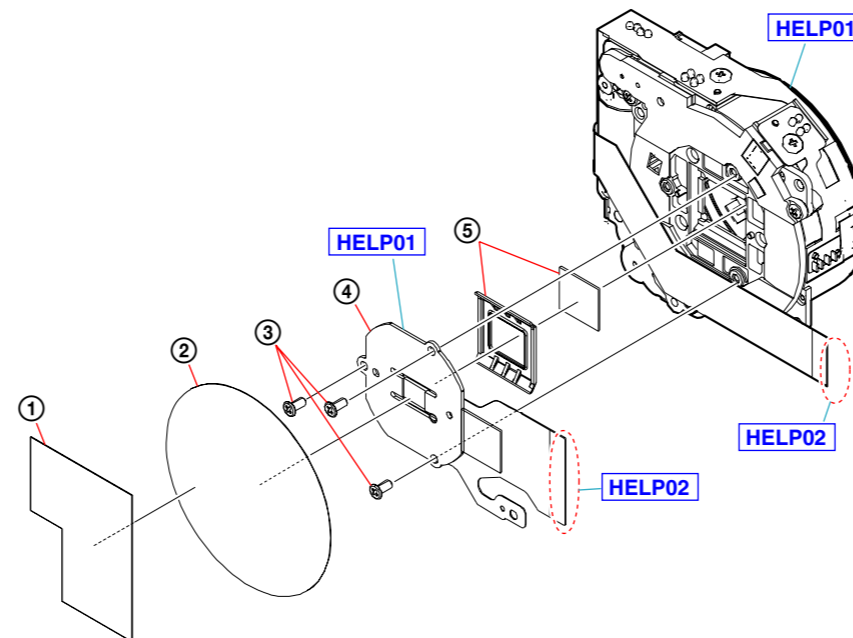
- ① SCREW_TP_1.4_3_A_0.2_D=2.5
- ② ST BLOCK ASSY



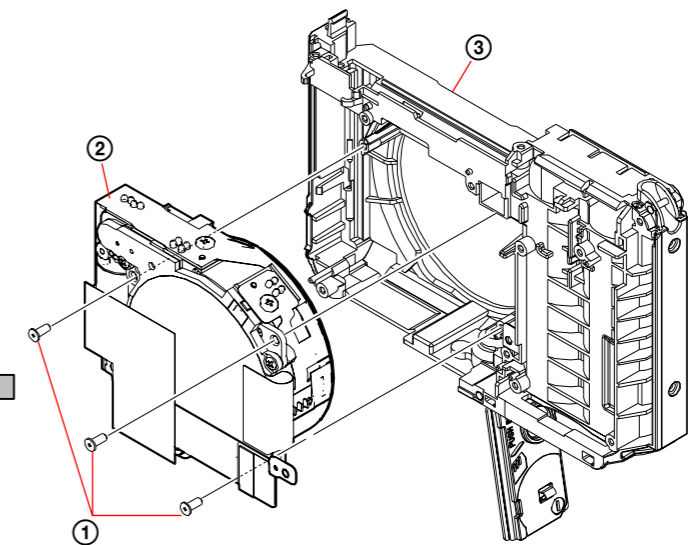
- ① SCREW_TP_1.4_3_A_0.2_D=2.5
- ② SW BLOCK



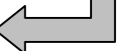
- ① SCREW_TP_1.4_3_A_0.2_D=2.5
- ② MAIN BOARD



- ① MYLAR SHEET
- ② CCD PLATE SHEET
- ③ SCREW_TP_1.4_3_A_0.2_D=2.5
- ④ CCD ASSY
- ⑤ LOW PASS FILTER SET



- ① SCREW_TP_1.4_3.5_A0.3_D2.5_N
- ② LENS BLOCK ASSY
- ③ MAIN FRAME SUB ASSY

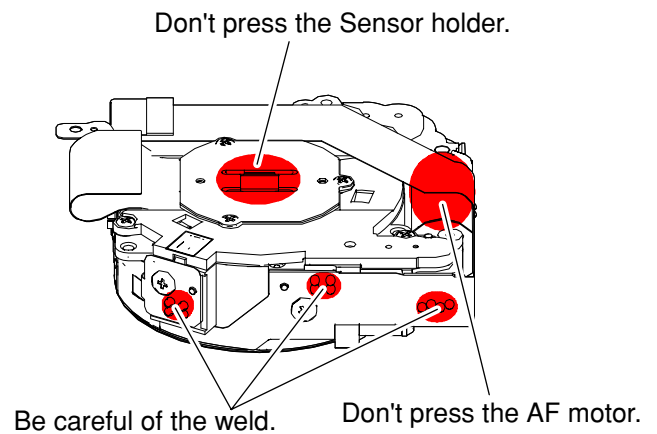
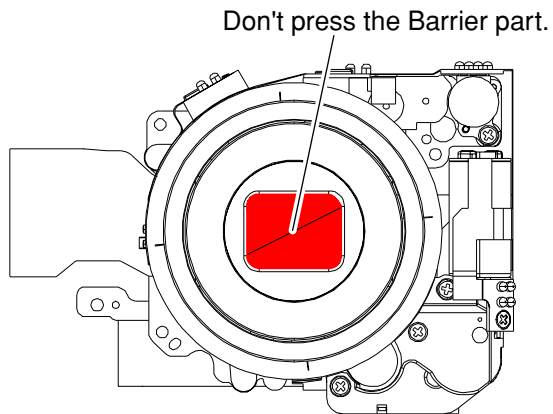


AJUDA

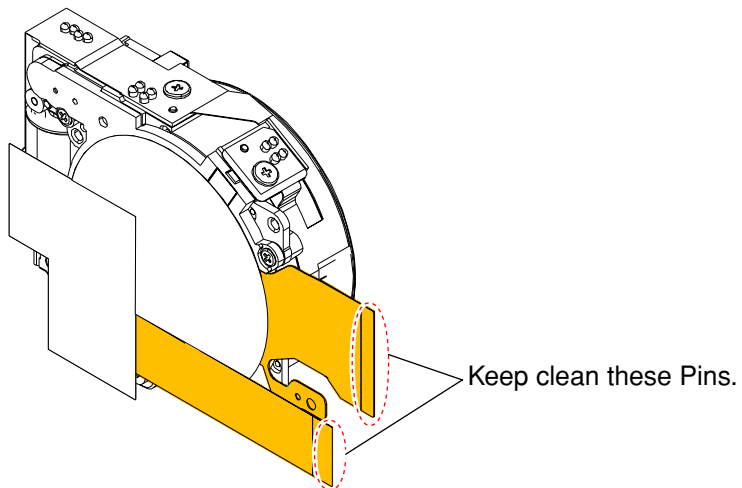
Sheet attachment positions and procedures of processing the flexible boards/harnesses are shown.

HELP01

Be careful about the Lens Assy

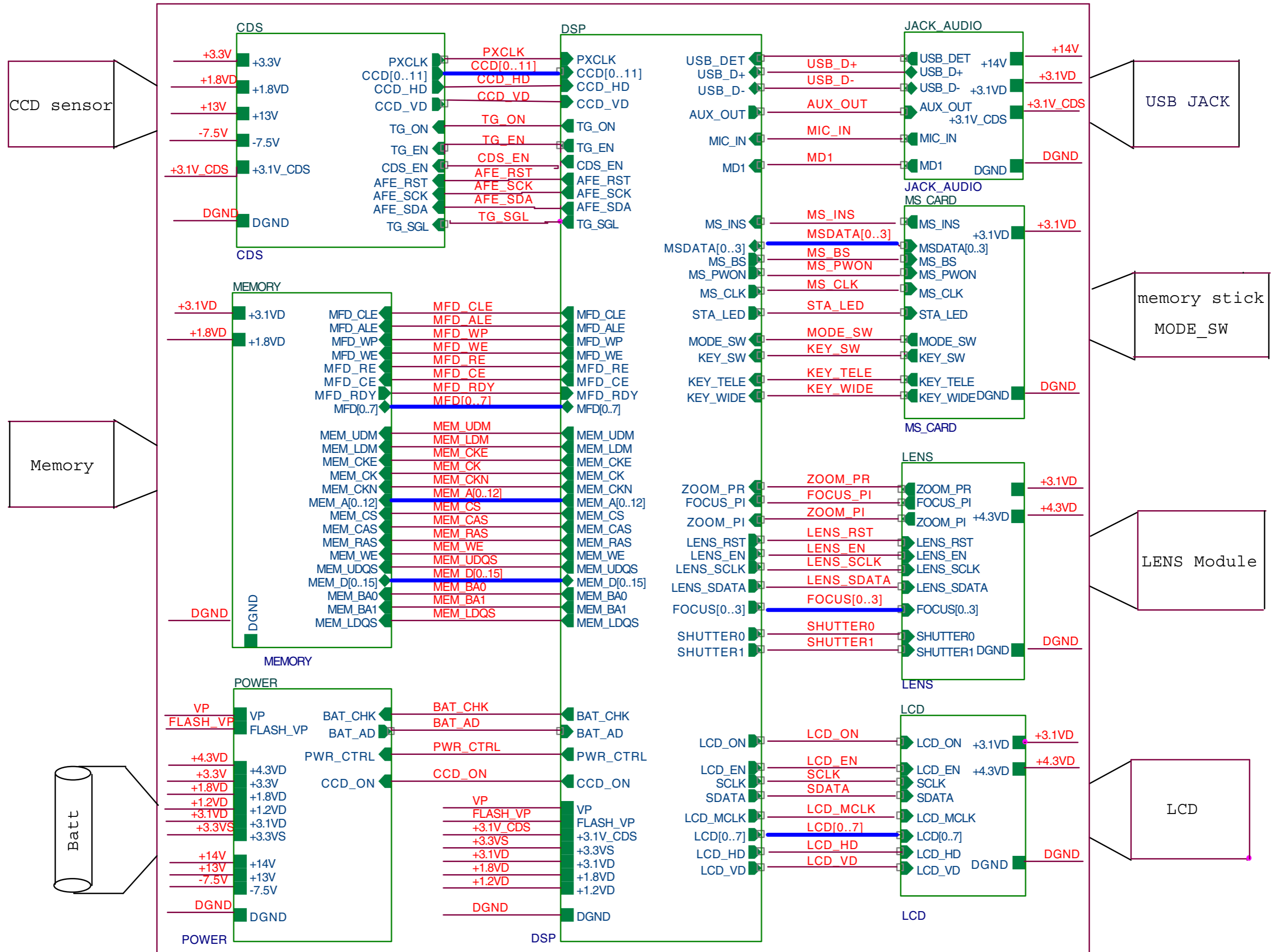


HELP02



3. DIAGRAMA EM BLOCO

3-1. DIAGRAMA EM BLOCO GERAL



4. LISTA DE PEÇAS PARA REPARO

NOTE:

- -XX, -X mean standardized parts, so they may have some differences from the original one.
- Items marked "*" are not stocked since they are seldom required for routine service. Some delay should be anticipated when ordering these items.
- The mechanical parts with no reference number in the exploded views are not supplied.
- Due to standardization, replacements in the parts list may be different from the parts specified in the components used on the set.

When indicating parts by reference number, please include the board name.

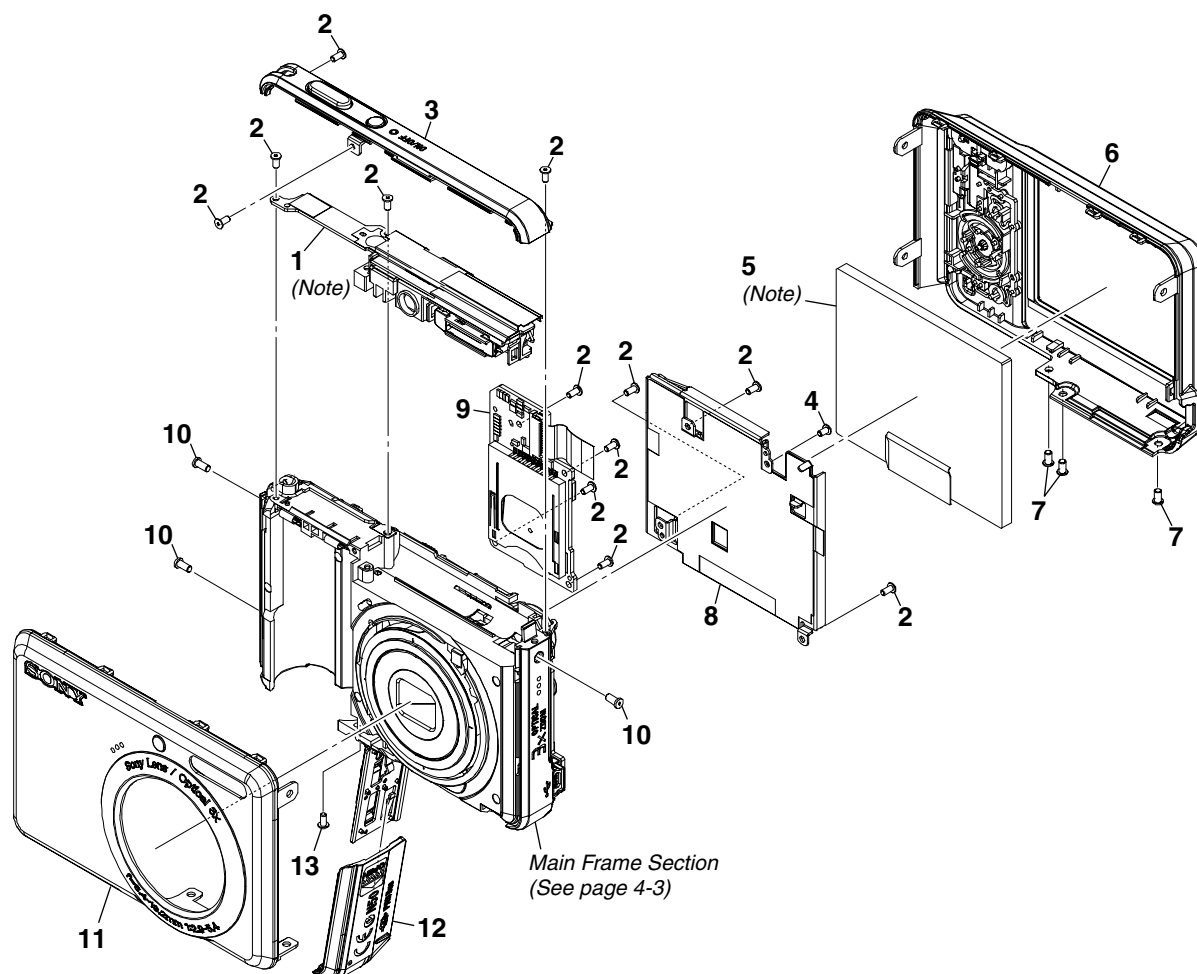
The components identified by mark \triangle or dotted line with mark \triangle are critical for safety. Replace only with part number specified.

Les composants identifiés par une marque \triangle sont critiques pour la sécurité. Ne les remplacer que par une pièce portant le numéro spécifié.

- Color Indication of Appearance Parts
Example:
(SILVER) : Cabinet's Color
(Silver) : Parts Color

4-1. VISTA EXPLODIDAS

4-1-1. SEÇÃO GERAL



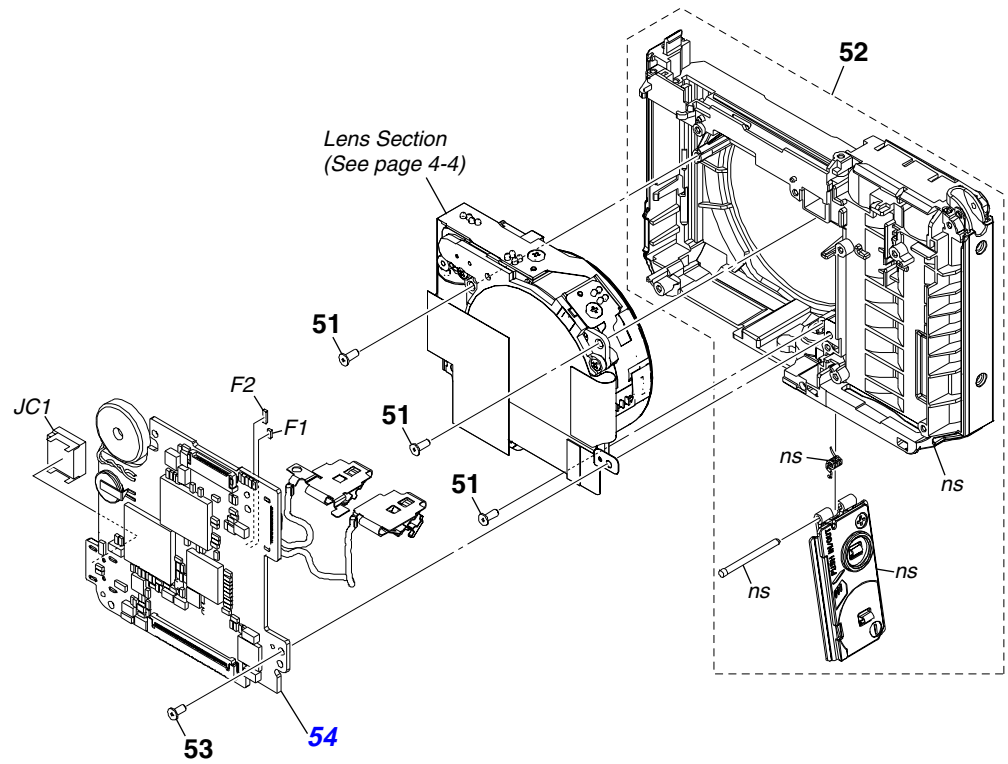
Note: The adjustment is not required after replacing these parts.

Ref. No.	Part No.	Description
1	A-1709-330-A	ST BLOCK ASSY (Note)
2	3-288-943-01	SCREW_TP_1.4_3_A_0.2_D=2.5
3	X-2348-652-1	CABINET (UPPER) ASSY
4	3-113-001-01	SCREW TP 1.4*2.5
5	4-140-963-01	LCD (Note)
6	X-2348-646-1	CABINET (REAR) ASSY (S) (SILVER)
7	3-113-005-01	SCREW TP 1.7*3
8	4-140-962-01	LCD BRACKET

Ref. No.	Part No.	Description
9	A-1709-329-A	SW BLOCK
10	4-145-605-01	SCREW_TP_1.7_3.5_A0.5_D2.5
11	X-2348-649-1	CABINET (FRONT) ASSY (S) (SILVER)
12	4-140-969-01	BT, LID (S) (SILVER)
13	4-137-871-01	SCREW_TP_1.4_3.5_A0.3_D2.5_N

4-1-2. SEÇÃO DA ARMAÇÃO PRINCIPAL

ns: not supplied



Note 1: In case of the main board failure, contact your local Sony service Headquarter for the measures.

Note 2: The adjustment is not required after replacing these parts.

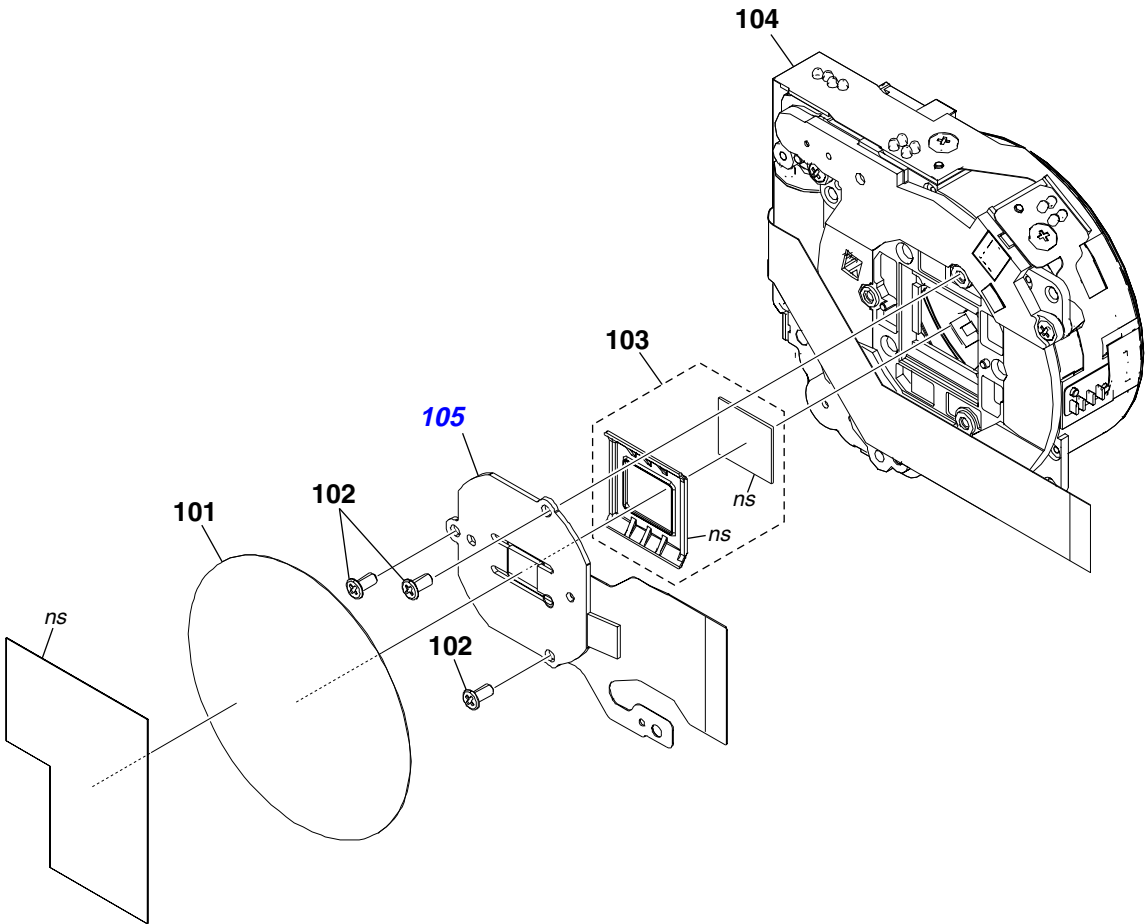
• Refer to page 4-1 for mark \triangle .

Ref. No.	Part No.	Description
51	4-137-871-01	SCREW_TP_1.4_3.5_A0.3_D2.5_N
52	X-2348-653-1	MAIN FRAME SUB ASSY
53	3-288-943-01	SCREW_TP_1.4_3_A_0.2_D=2.5
54	A-1735-180-A	MAIN MOUNTED PC BOARD
\triangle F1	1-576-363-11	FUSE (1A/30V)

Ref. No.	Part No.	Description
\triangle F2	1-576-913-11	FUSE, MICRO (1608 TYPE) (1.6A/36V)
JC1	4-134-399-01	CONNECTOR, USB

4-1-3. SEÇÃO DA LENTE

ns: not supplied



Note: In case of the CCD assy failure, contact your local Sony service Headquarter for the measures.

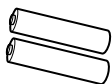
Ref. No.	Part No.	Description
101	4-140-965-01	CCD PLATE SHEET
102	3-288-943-01	SCREW_TP_1.4_3_A_0.2_D=2.5

Ref. No.	Part No.	Description
103	4-140-964-01	FILTER SET, LOWPASS
104	A-1709-331-A	LENS BLOCK ASSY
105	A-1735-183-A	CCD BLOCK ASSY

4-2. ACESSÓRIOS

Verificando acessórios fornecidos

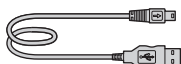
Nota: Este item é fornecido com o produto, mas não é fornecido como peça de reposição.



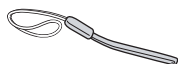
Pilha Alcalina (tipo AA)
(Nota)



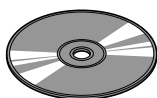
Manual de Instruções
4-126-520-31



Cabo USB
1-829-579-41



Alça de Mão
2-050-981-01



CD-ROM
"Cyber-shot application software"
"Cyber-shot Handbook"
"Cyber-shot Step-up Guide"
4-127-176-01



Manuao da Cyber-shot (PDF)

The CD-ROM supplied contains all of language version of the Cyber-shot Handbook (PDF) for printing.

- The printed matter is not supplied. If required, please order it with the part number below.

* 4-126-517-51

- PLACA PRINCIPAL

Ref. No.: F2
Part No.: 1-576-913-11
Description: FUSE, MICRO (1608 TYPE) (1.6A/36V)

