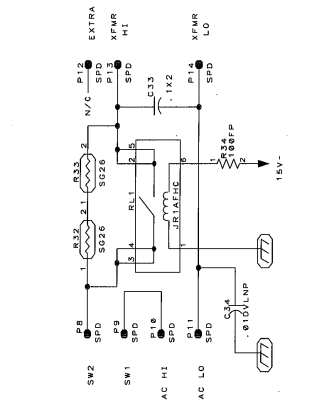
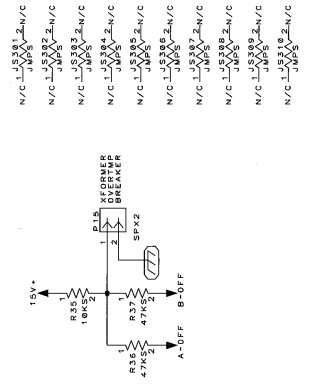
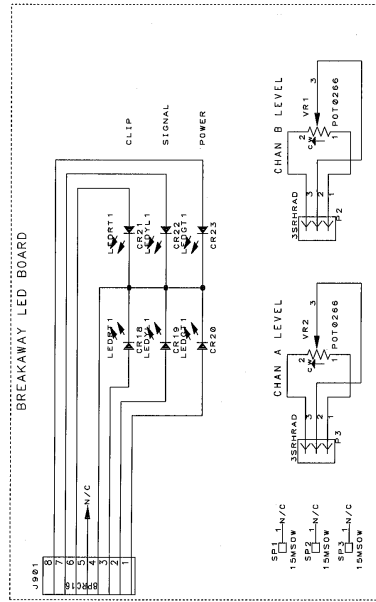
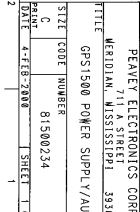
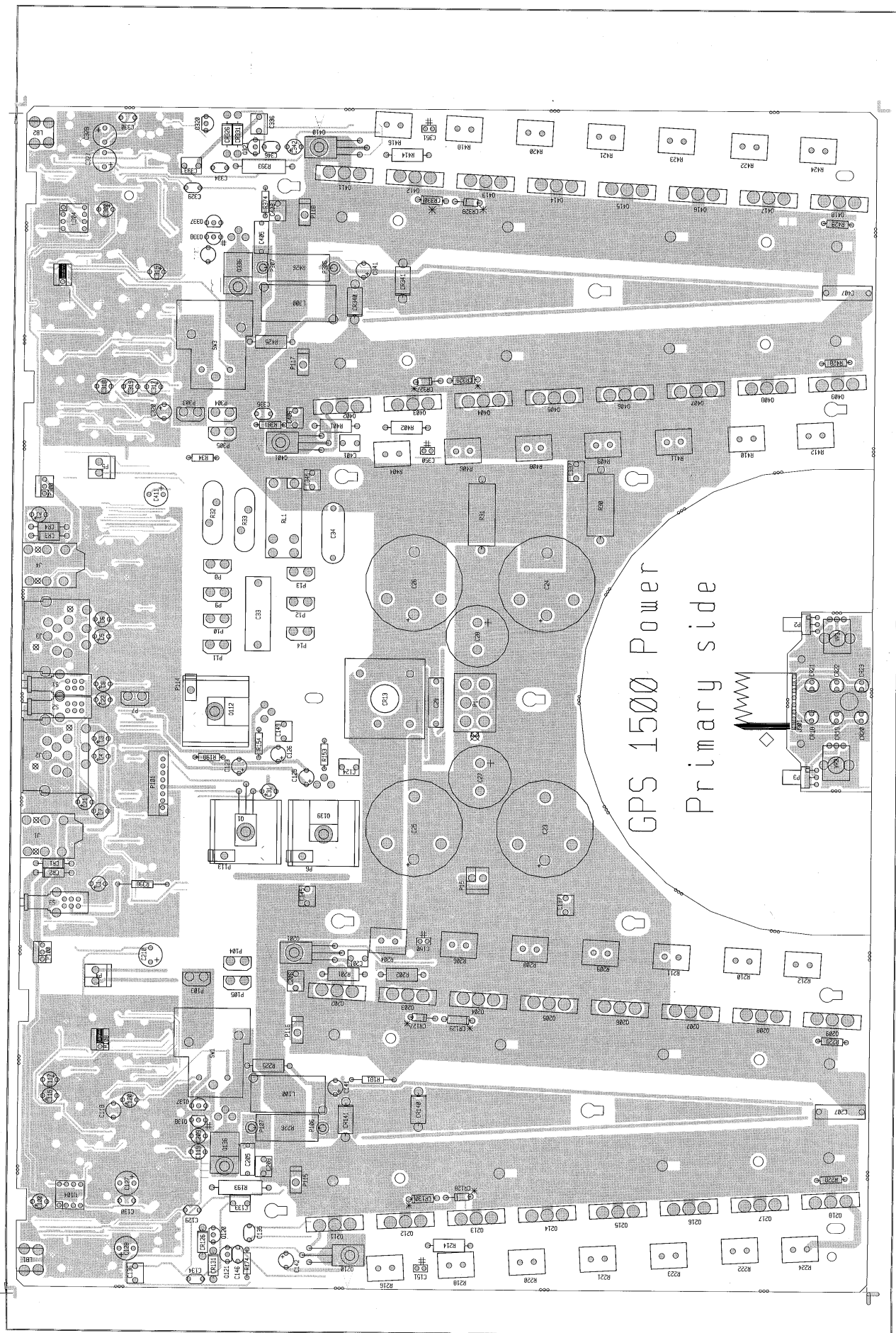


PEAVEY ELECTRONICS CORP.  
711 A STREET  
MERIDIAN, MISSISSIPPI 39301  
TITLE GP1500 POWER SUPPLY/AUX  
SIZE CODE NUMBER  
C  
REV B  
DATE 8-NOV-89  
SHEET 1 OF 1

CHANGED 100R58 TO 100R58 CAP  
ADDED AC SECTION: BLEEDER RESISTORS  
CHANGED BRIDGE TO 2504W. ADDED 3 15M50V'S  
REPLACED CR15 TO CR15. ADDED CR15  
REPLACED P1. TURNED CR15 AROUND R29  
CHANGE 15V AND 15V TO 15V. AND 15V-  
CHANGE RIGHT ANGLE JACKS J1 & J2 TO MASLE223  
C1-C24; CR1-CR23; Q1; R1-R37







GPS 1500

GPS 1500 Power  
Secondary side

