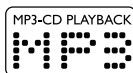


Service
Service
Service



Service Manual



CONTENTS

Technical specification	1-2..1-4
Version Variation.....	2-1
Disassembly diagram.....	2-2

Block diagram.....	3-1
Wiring diagram	3-2

MAIN board	
Circuit diagram	4-1..4-2
Layout diagram.....	4-3 4-4

Display board	
Circuit diagram	5-1
Layout diagram.....	5-2..5-3

POWER,AMP board	
Circuit diagram	6-1
Layout diagram.....	6-2 6-3

Exploded view diagram	7-1
-----------------------------	-----

© Copyright 2011 Philips Consumer Electronics B.V. Eindhoven, The Netherlands
All rights reserved. No part of this publication may be reproduced, stored in a retrieval system or transmitted, in any form or by any means, electronic, mechanical, photocopying, or otherwise without the prior permission of Philips.

Published by LZ1115 Service Audio Subject to modification

Version 1.3



**CLASS 1
LASER PRODUCT**

3141 785 36150

PHILIPS

[illegible]

TECHNICAL DESCRIPTION			
AUX IN			
AUX Part			
	Nom.	Limit	Condition
10% THD Output Power	50W	45W	2000mV 1KHz input
SNR unwd.	60dB	50dB	2000mV 1KHz input
SNR wrd. dB	65dB	55dB	2000mV 1KHz input
Crosstalk (1KHz)	60dB	50dB	2000mV input
Crosstalk (10KHz)	60dB	50dB	2000mV input
Frequency response (-3dB)	100 to 10KHz (overall)		2000mV input
THD (1KHz, 0dB)	2%	3%	2000mV 1KHz input
MP3 LINK			
	Nom.	Limit	Condition
10% THD Output Power	50W	45W	500mV 1KHz input
SNR unwd.	60dB	50dB	500mV 1KHz input
SNR wrd. dB	65dB	55dB	500mV 1KHz input
Crosstalk (1KHz)	60dB	50dB	500mV input
Crosstalk (10KHz)	60dB	50dB	500mV input
Frequency response (-3dB)	100 to 10KHz (overall)		500mV input
THD (1KHz, 0dB)	2%	3%	500mV 1KHz input

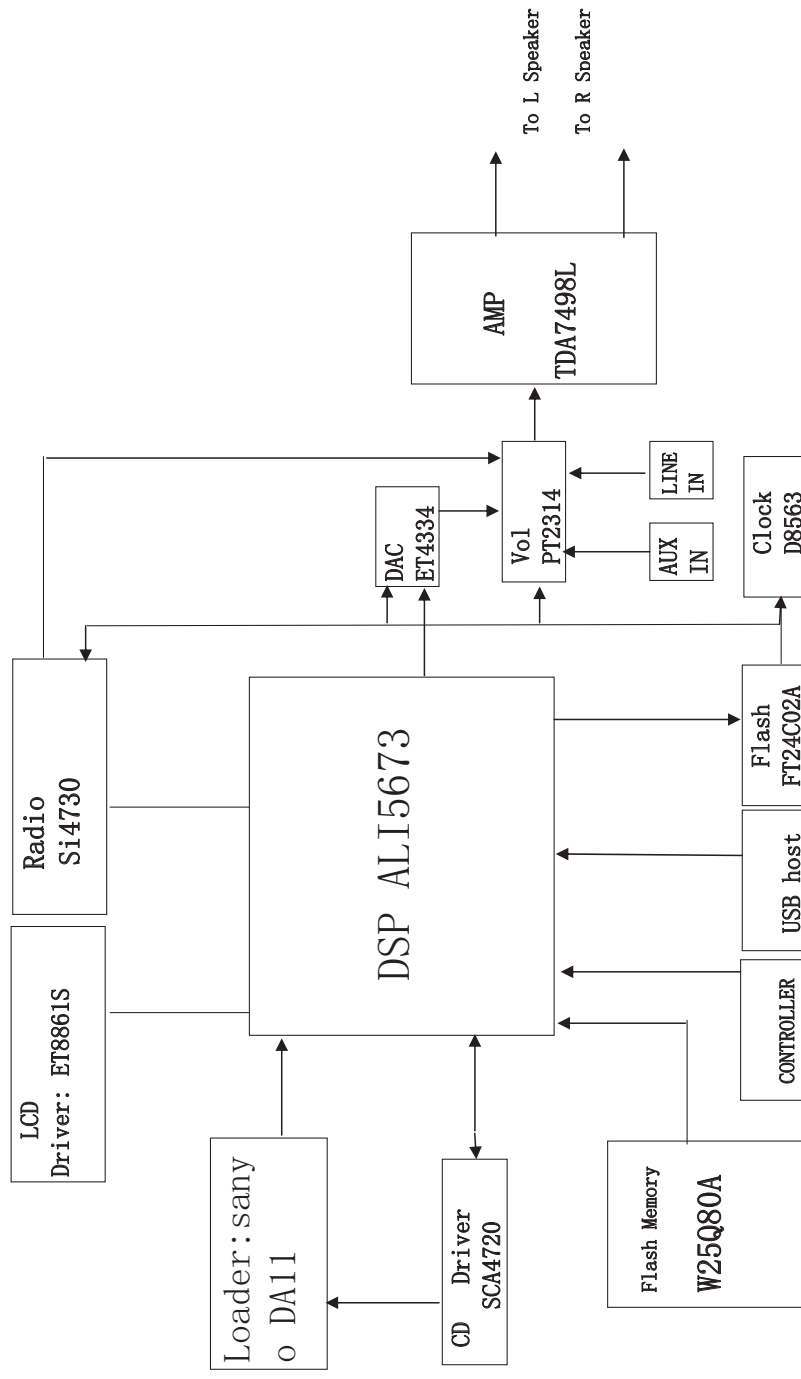
VERSION VARIATION

Type /Versions:		FWM210									
Board in used:	Service policy	/55	/77	/78	/12						
Display BOARD		C	C	C	C						
Main BOARD		C	C	C	C						
USB BOARD		C	C	C	C						
LINE In BOARD		C	C	C	C						
KEY BOARD		C	C	C	C						
AMP BOARD		C	C	C	C						

Type /Versions:		FWM210									
Features	Feature diffrence	/55	/77	/78	/12						
RDS											
VOLTAGE SELECTOR											
ECO STANDBY - DARK		√	√	√	√						

* TIPS : C -- Component Lever Repair.
M -- Module Lever Repair
√ -- Used

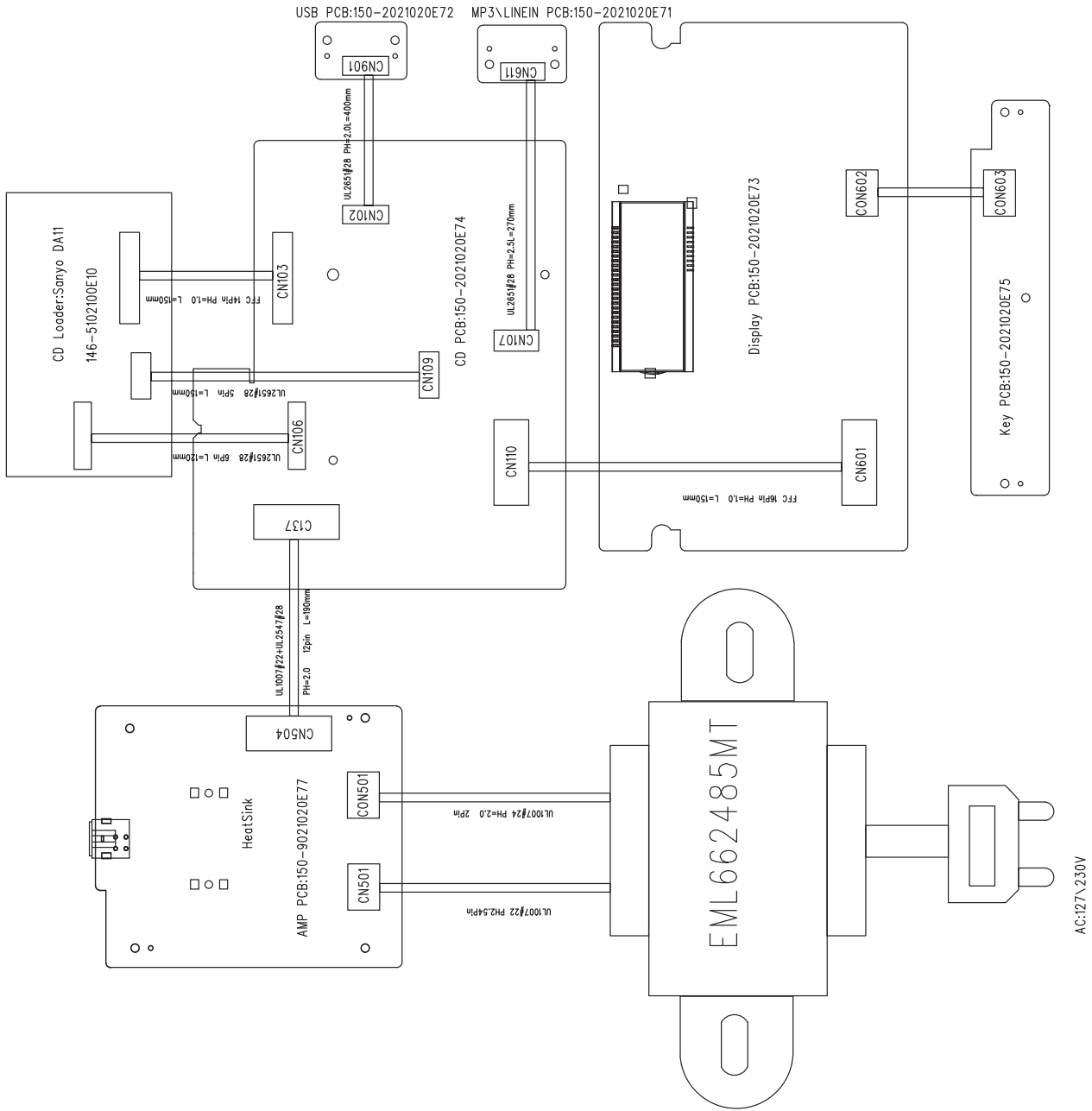
SET BLOCK DIAGRAM



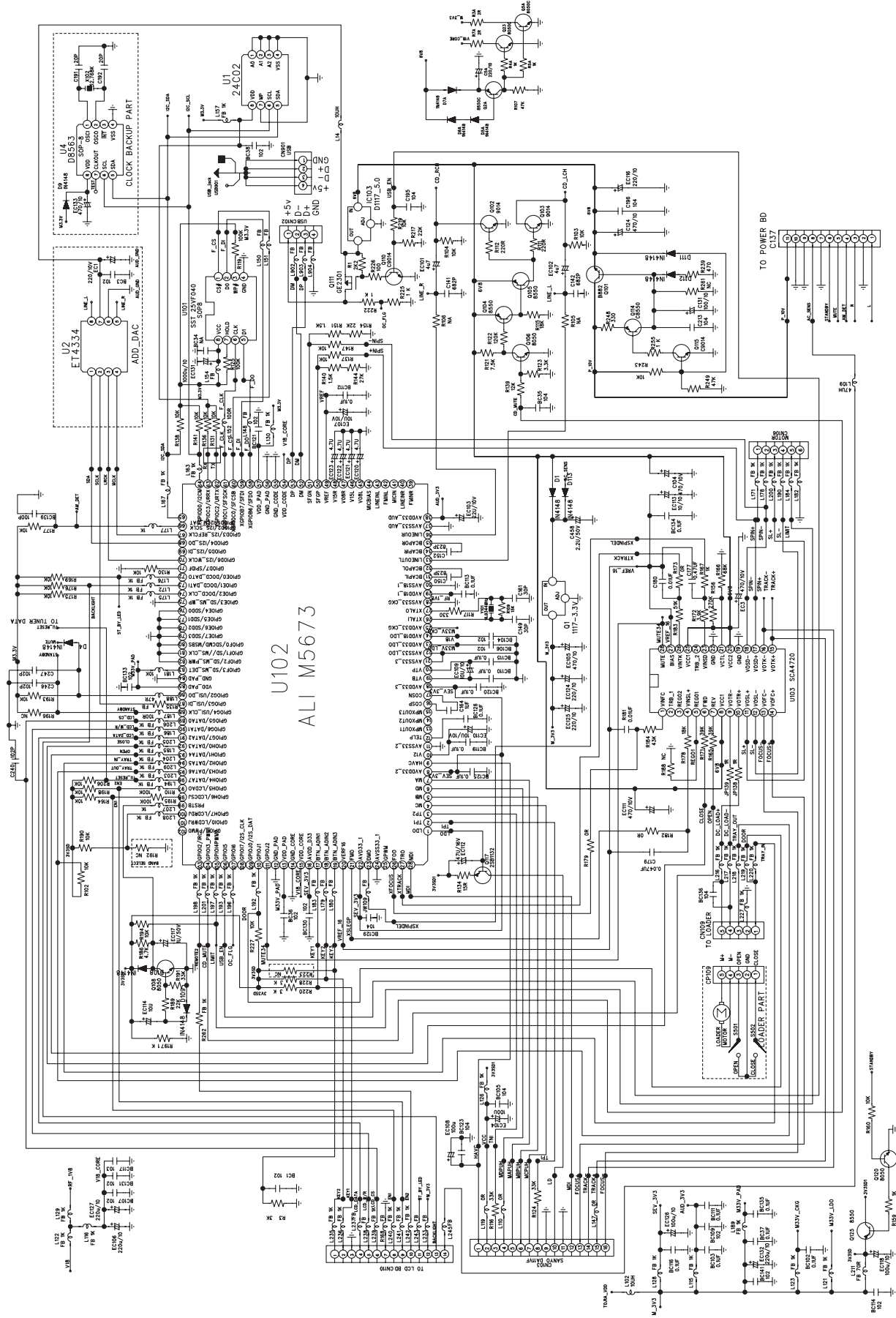
SET WIRING DIAGRAM

3-2

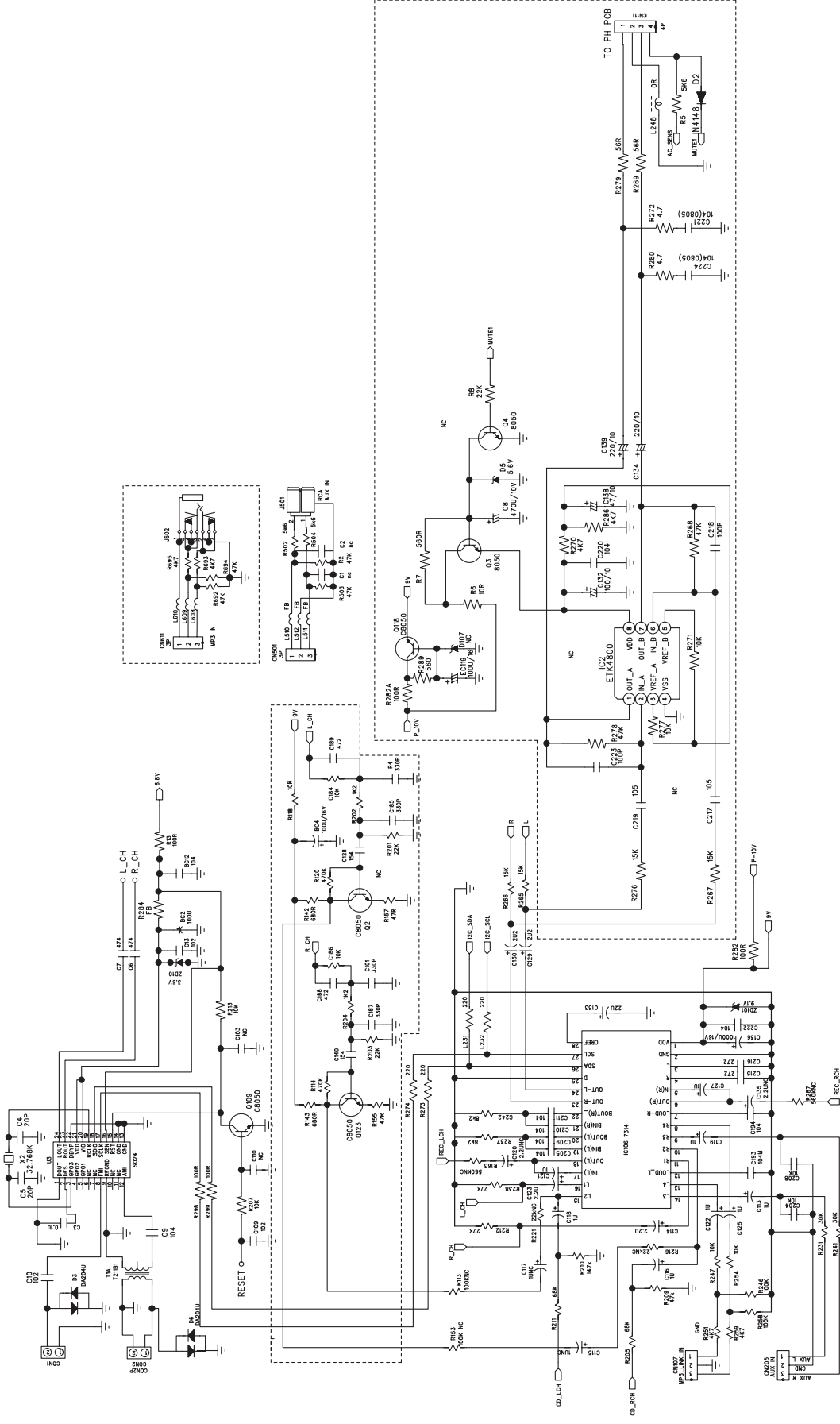
3-2



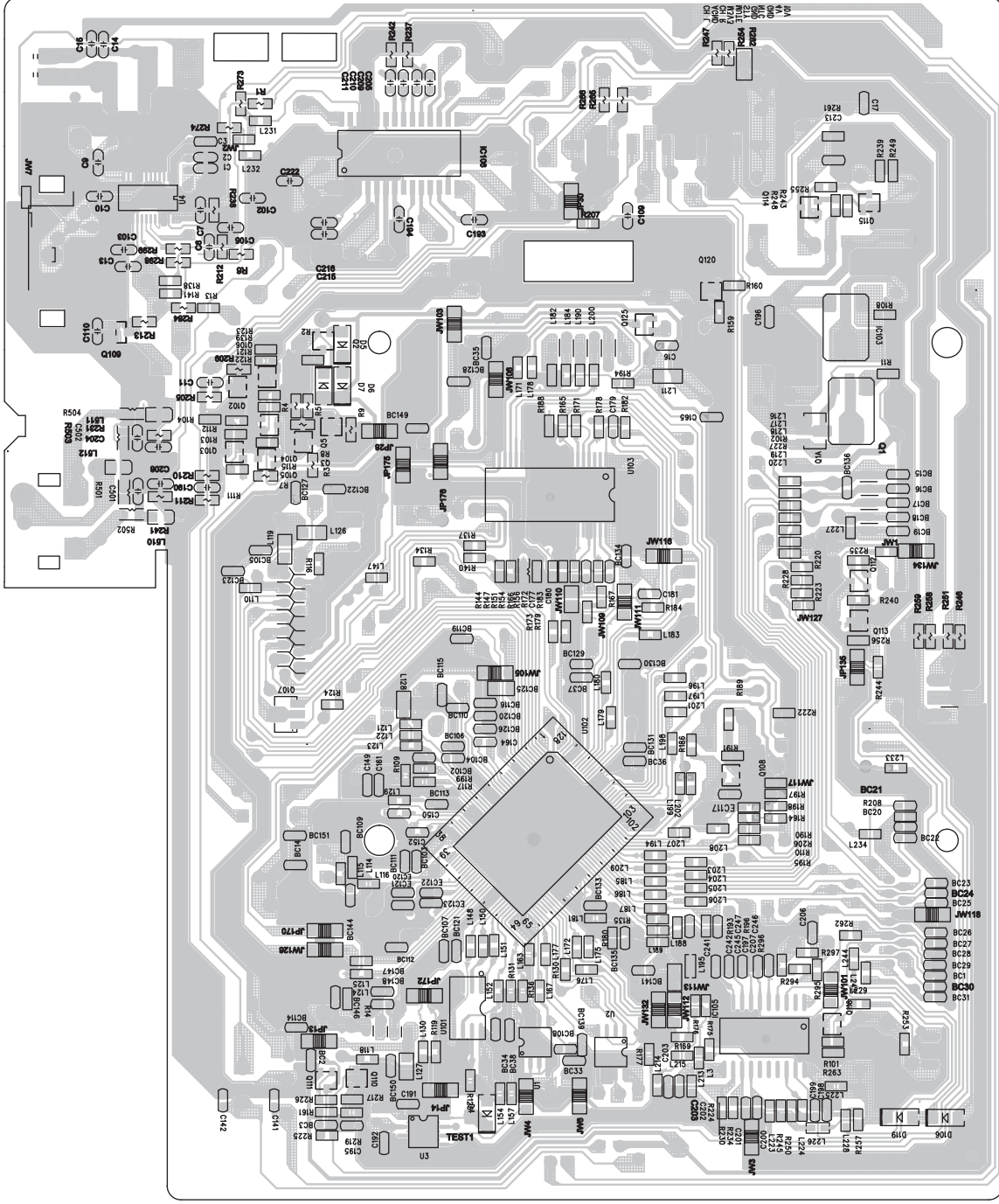
CIRCUIT DIAGRAM - MAIN BOARD PART1



CIRCUIT DIAGRAM - MAIN BOARD PART2



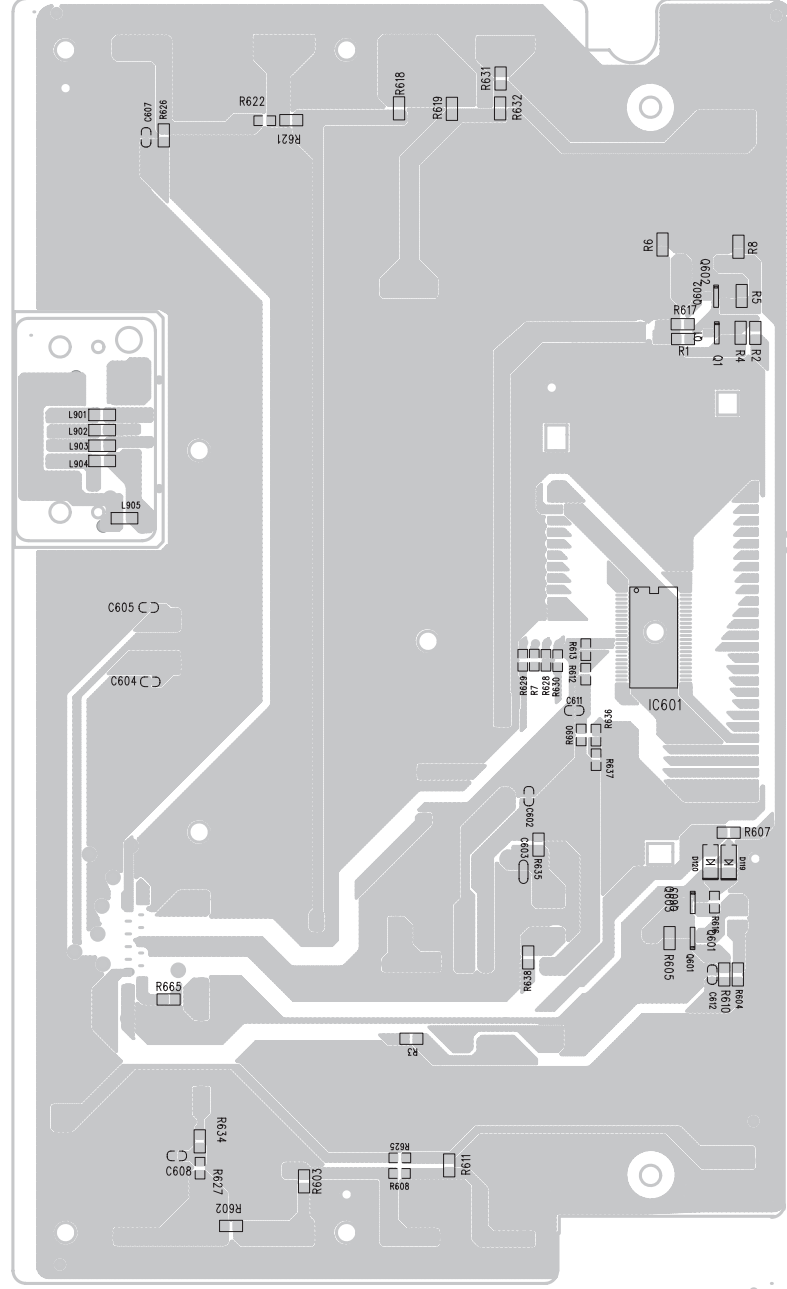
LAYOUT DIAGARM - MAIN BOARD
BOTTOM SIDE VIEW



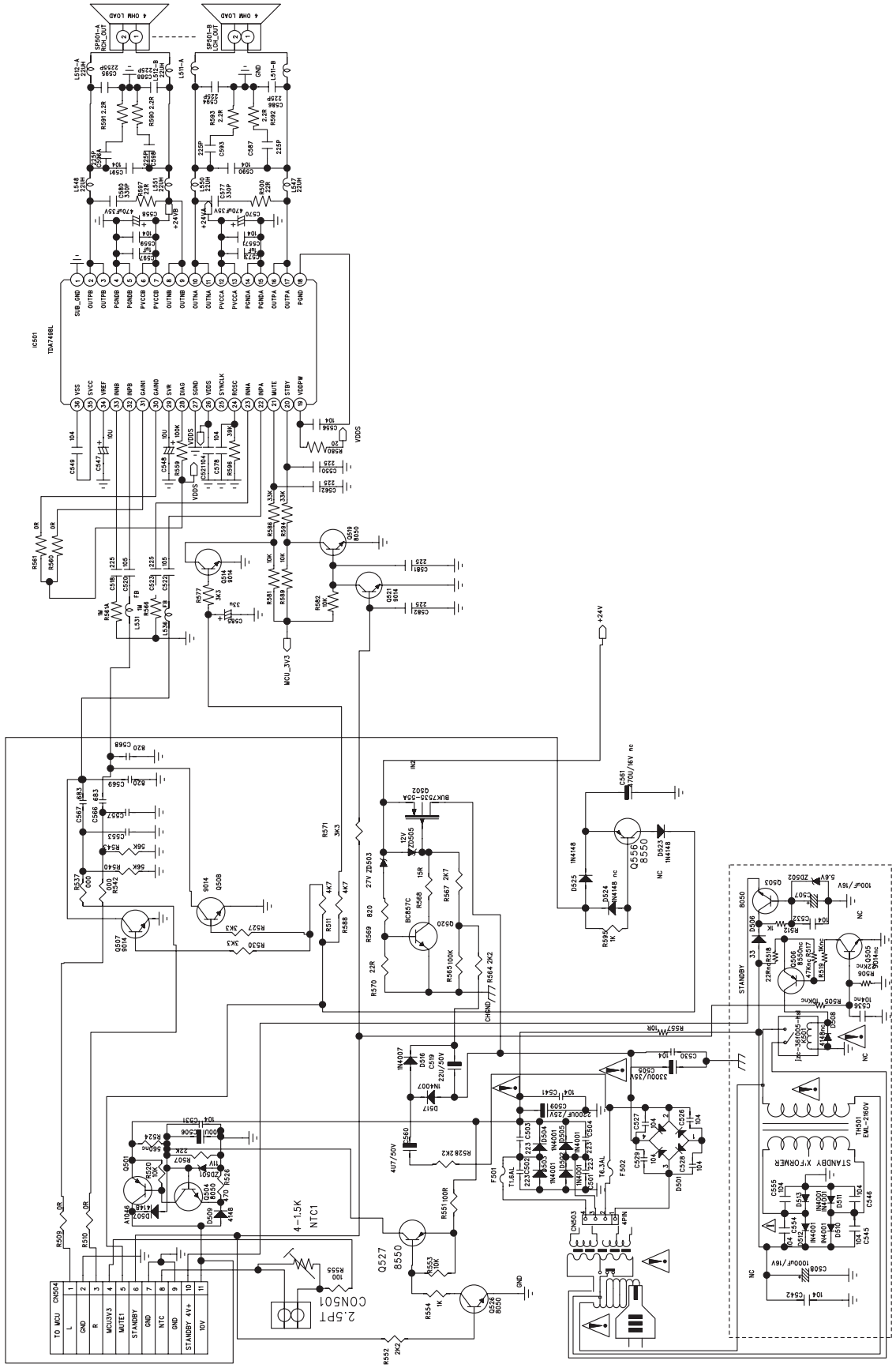
5-1



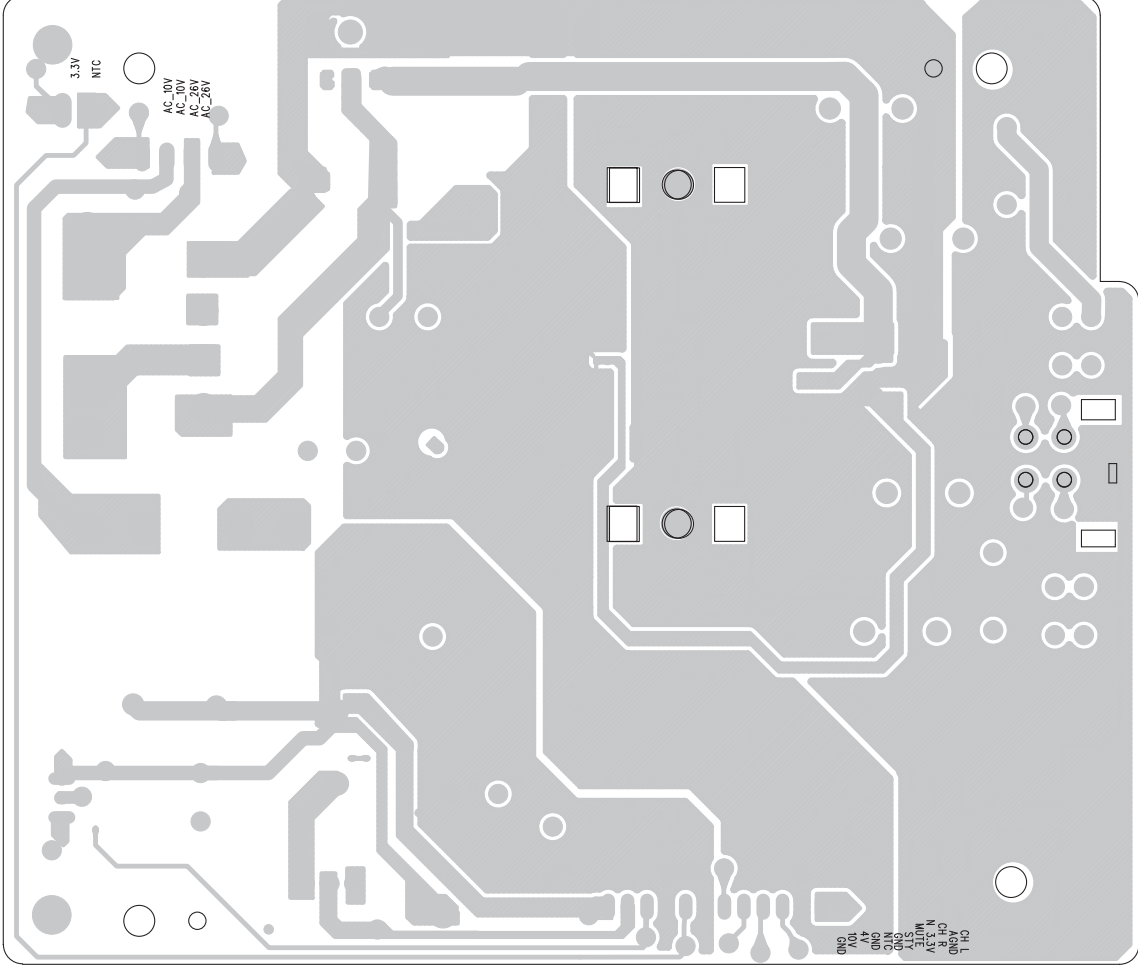
5-3



CIRCUIT DIAGRAM - POWER+AMP BOARD



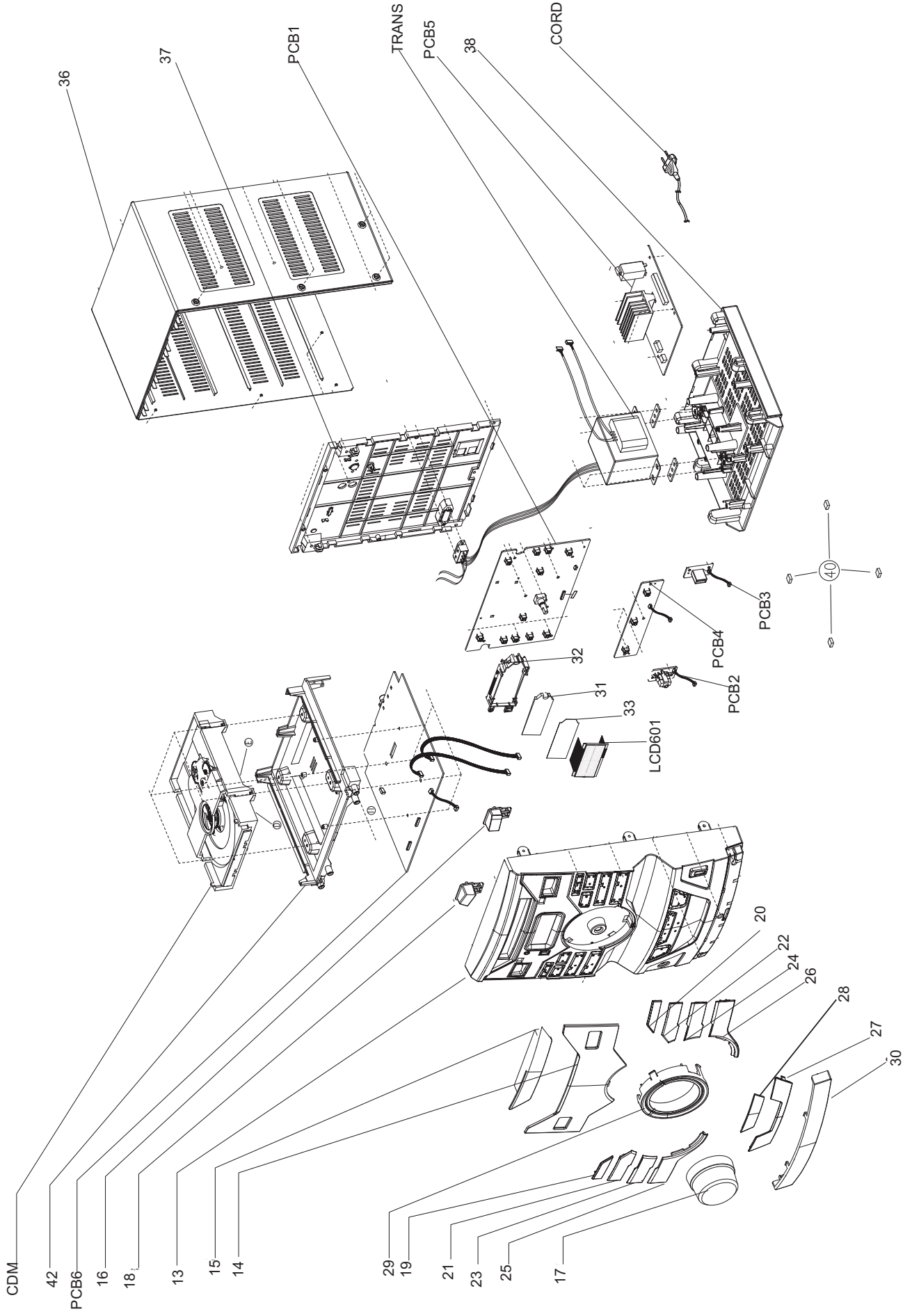
LAYOUT DIAGRAM - POWER+AMP BOARD
BOTTOM SIDE VIEW



7-1

7-1

EXPLODED VIEW DIAGRAM



Version History

V1.0: Initial release

V1.1: Add /78 version

V1.2: Add /12 version

V1.3: Add FWM211X/77 version