

Service Manual

CD Stereo System

Model No. **SA-AK580EB**

SA-AK580EG

SA-AK580PH

SA-AK580PN

SA-AK580PR

SA-AK780PH

SA-AK780PN

SA-AK780PR

SA-AK980PU

Product Color: (K)...Black Type

Subject : Schematic Diagram / P.C.B. / Exploded View / Replacement Parts List
(Updates)

Please file and use this supplement manual together with the service manual for

Model No. SA-AK580EB/EG-K, Order No. PSG0907015CE

Model No. SA-AK580PH/PN-K, Order No. PSG0905048CE

Model No. SA-AK580PR-K, Order No. PSG0907017AE

Model No. SA-AK780PH/PN-K, Order No. PSG0905049CE

Model No. SA-AK780PR-K, Order No. PSG0907018AE

Model No. SA-AK980PU-K, Order No. PSG0905029CE

WARNING

This service information is designed for experienced repair technicians only and is not designed for use by the general public. It does not contain warnings or cautions to advise non-technical individuals of potential dangers in attempting to service a product. Products powered by electricity should be serviced or repaired only by experienced professional technicians. Any attempt to service or repair the product or products dealt with in this service information by anyone else could result in serious injury or death.

TABLE OF CONTENTS

	PAGE		PAGE
1 Notes	3	3 Printed Circuit Board	8
2 Schematic Diagram	4	3.1. CD Servo / Jupiter P.C.B. for (SA-AK580PH/ PN/PR)	8
2.1. Main Circuit (6/6) for (SA-AK580PH/PN/PR)	4	3.2. Main P.C.B. for (SA-AK580PH/PN/PR)	9
2.2. Main Circuit (2/6) for (SA-AK780PH/PN/PR)	5	3.3. CD Servo / Jupiter P.C.B. for (SA-AK780PH/ PN/PR)	10
2.3. Main Circuit (6/6) for (SA-AK780PH/PN/PR)	6		
2.4. Panel Circuit (2/2) for (SA-AK780PH/PN/PR)	7		

Panasonic®

© Panasonic Corporation 2009. All rights reserved.
Unauthorized copying and distribution is a violation of law.

3.4. Main P.C.B. for (SA-AK780PH/PN/PR)-----	11
4 Exploded View -----	12
4.1. Cabinet Parts Location for (SA-AK580PH/PN-K)-----	12
4.2. Cabinet Parts Location for (SA-AK780PH/PN-K)-----	13
4.3. Cabinet Parts Location for (SA-AK980PU-K) ----	14
5 Replacement Parts List -----	15
5.1. Mechanical Replacement Parts List-----	15
5.2. Electrical Replacement Parts List-----	15

1 Notes

Background:

- Addition of memory light reflection sheet to improve memory lighting.
- Addition and change of electrical components.

This supplement includes additional and revised contents to the original service manual for below sections:-

1. Update to Schematic Diagram (Main and Panel Circuit)
2. Update to Printed Circuit Board (Jupiter and Main P.C.B.)
3. Update to Exploded View
4. Update to Replacement Parts List

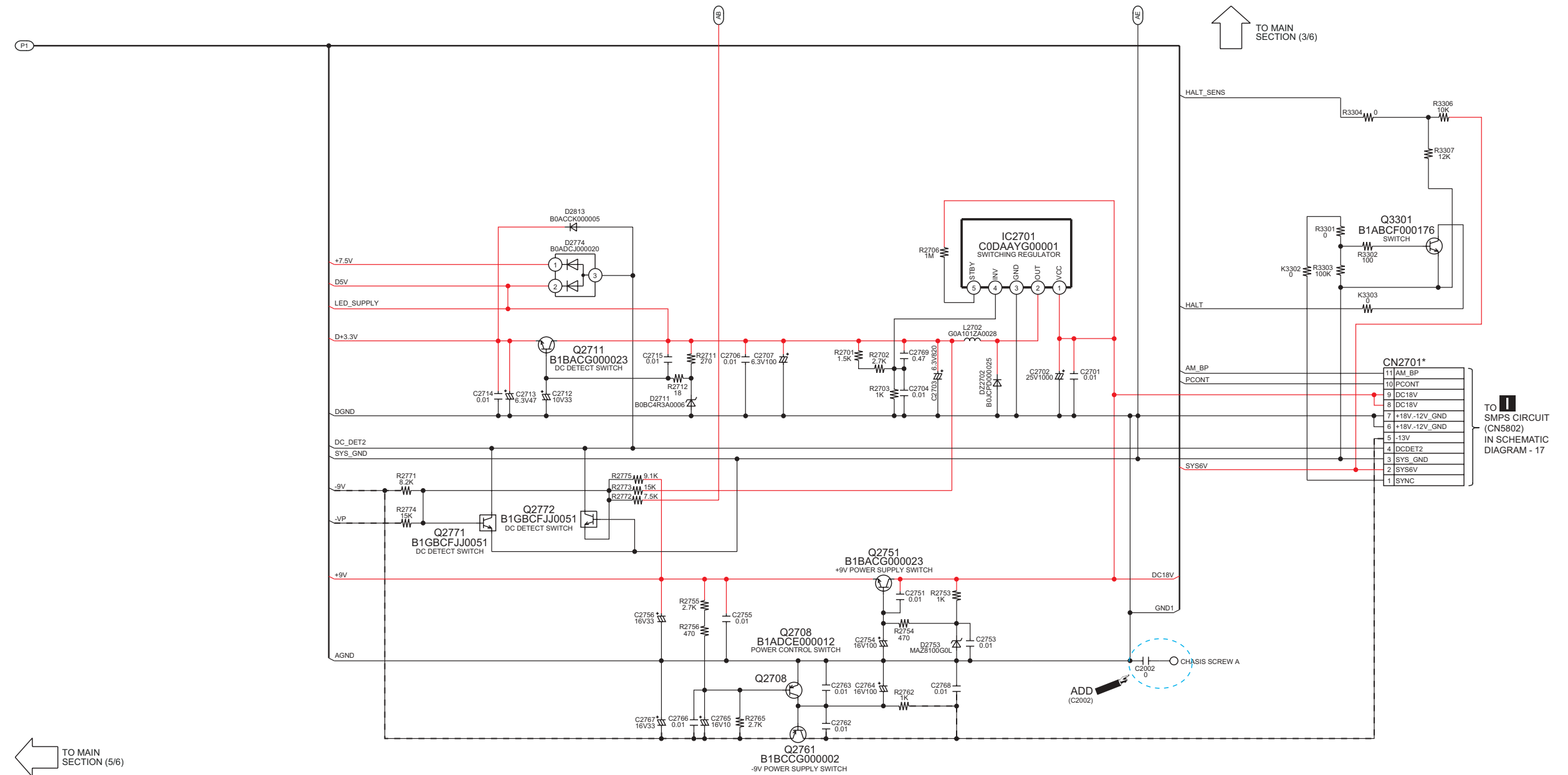
2 Schematic Diagram

2.1. Main Circuit (6/6) for (SA-AK580PH/PN/PR)

With reference to original service manual (section 16.7) on page 103 for Model No. SA-AK580PH/PN-K

SCHEMATIC DIAGRAM - 7

B MAIN CIRCUIT



1/6	2/6	3/6
4/6	5/6	6/6

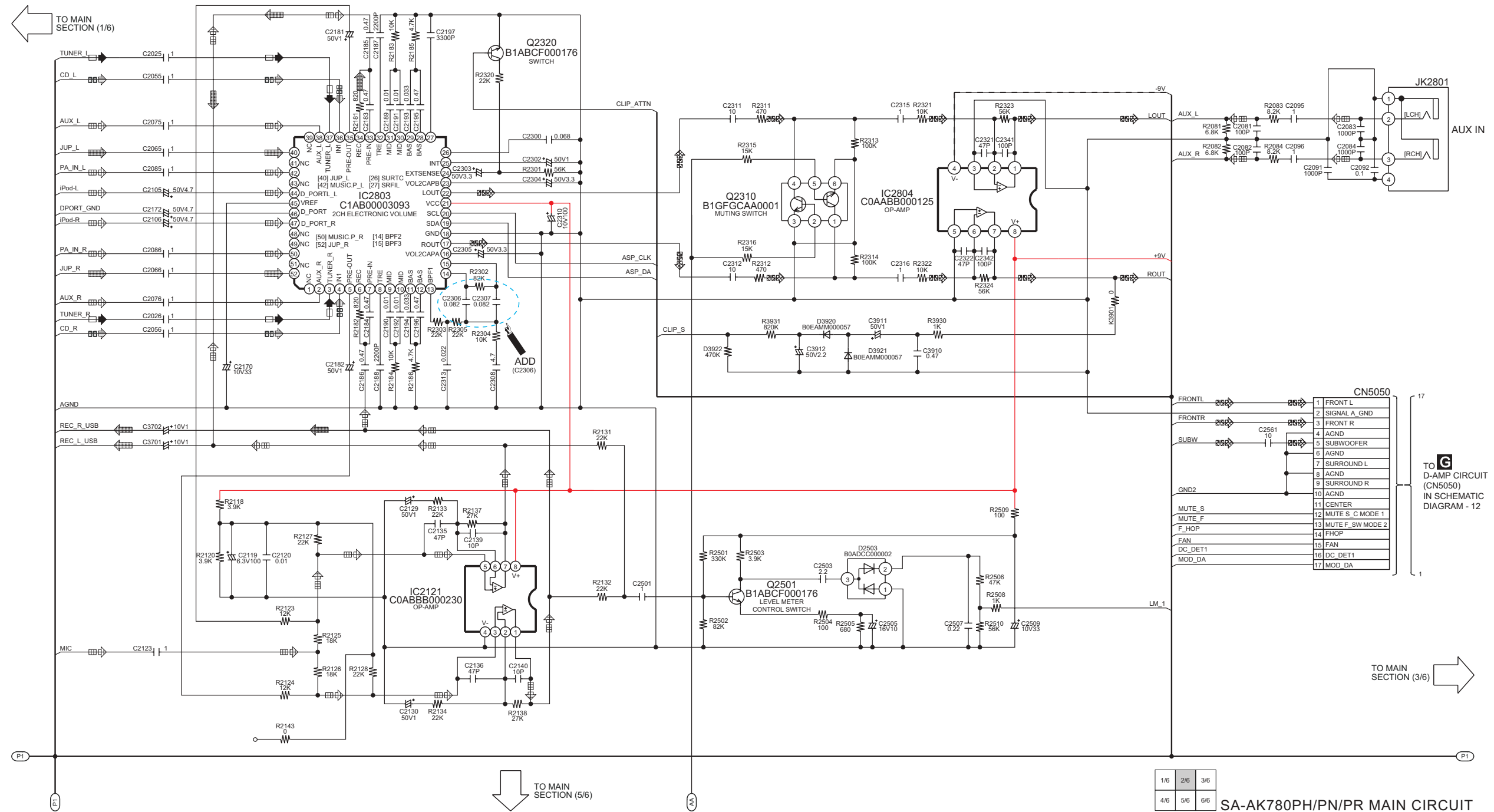
SA-AK580PH/PN/PR MAIN CIRCUIT

With reference to original service manual (section 16.3) on page 100 for Model No. SA-AK780PH/PN-K

With reference to original service manual (section 16.3) on page 100 for Model No. SA-AK780PH/PN-K

B MAIN CIRCUIT

— : +B SIGNAL LINE - - - : -B SIGNAL LINE  : CD AUDIO INPUT SIGNAL LINE  : AUX/MUSIC PORT/MIC AUDIO INPUT SIGNAL LINE  : AUDIO OUTPUT SIGNAL LINE  : AM/FM SIGNAL LINE  : USB SIGNAL LINE

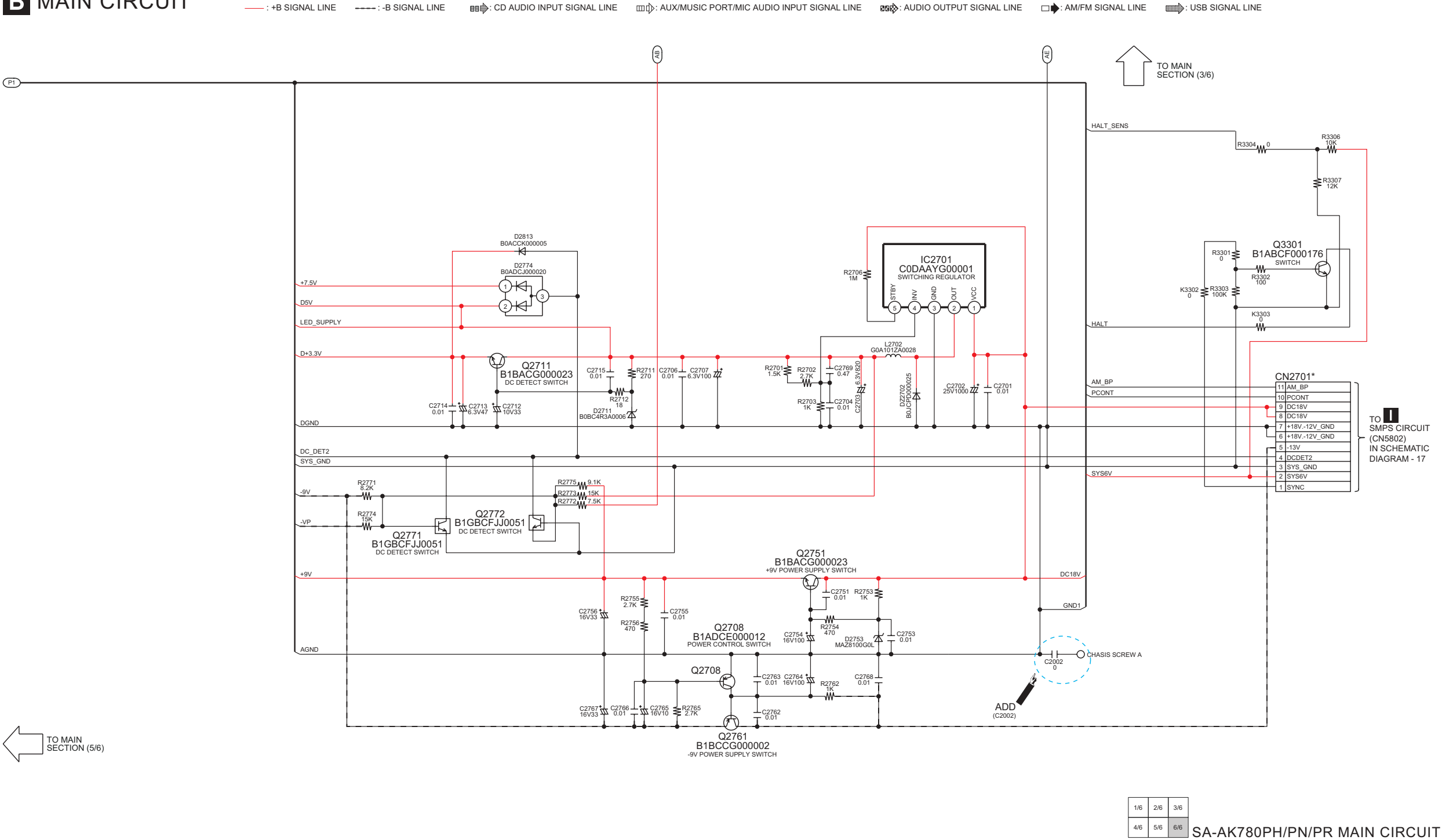


2.3. Main Circuit (6/6) for (SA-AK780PH/PN/PR)

With reference to original service manual (section 16.7) on page 104 for Model No. SA-AK780PH/PN-K

SCHEMATIC DIAGRAM - 7

B MAIN CIRCUIT

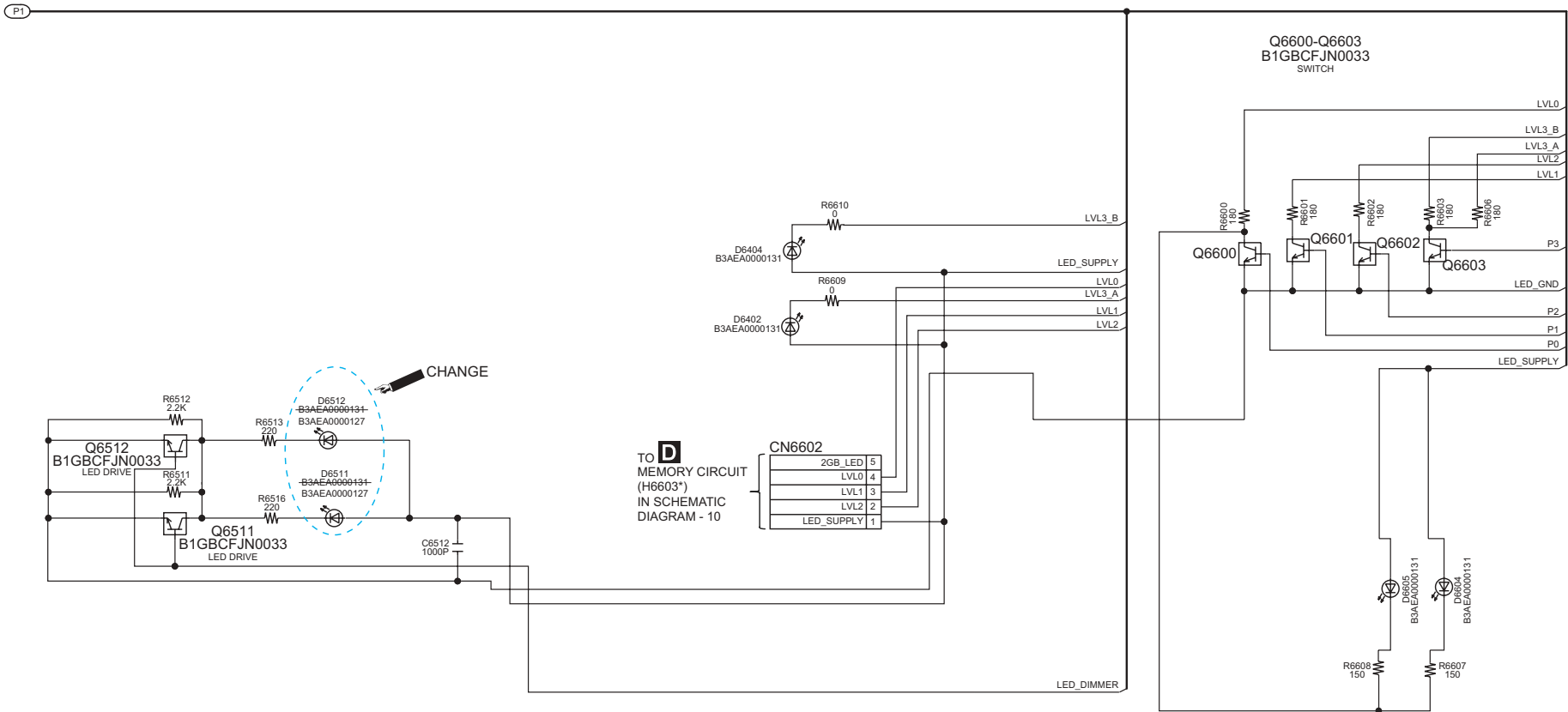


2.4. Panel Circuit (2/2) for (SA-AK780PH/PN/PR)

With reference to original service manual (section 16.9) on page 106 for Model No. SA-AK780PH/PN-K

SCHEMATIC DIAGRAM - 9
C PANEL CIRCUIT

— : +B SIGNAL LINE - - - : -B SIGNAL LINE

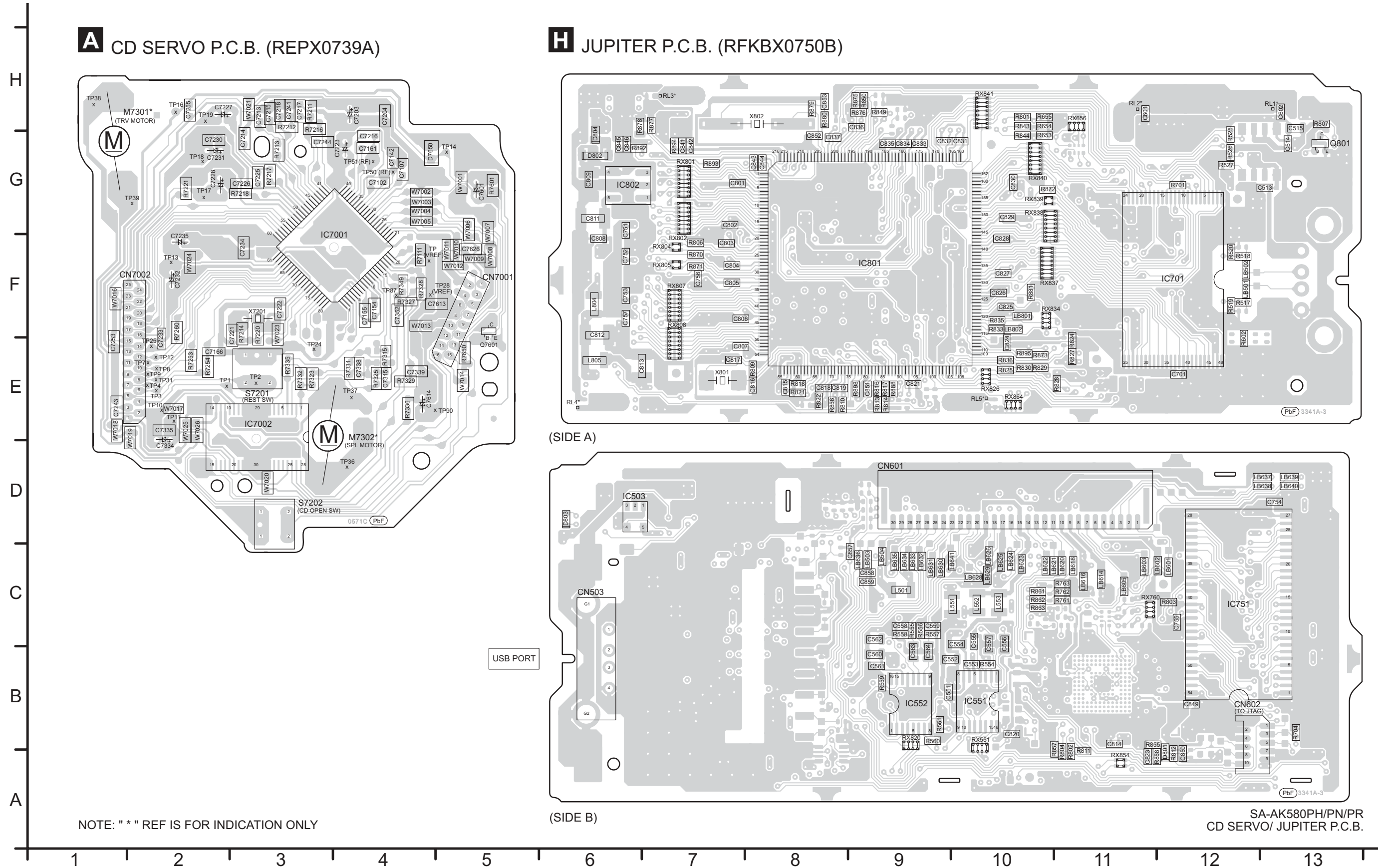


TO PANEL SECTION (1/2)

3 Printed Circuit Board

3.1. CD Servo / Jupiter P.C.B. for (SA-AK580PH/PN/PR)

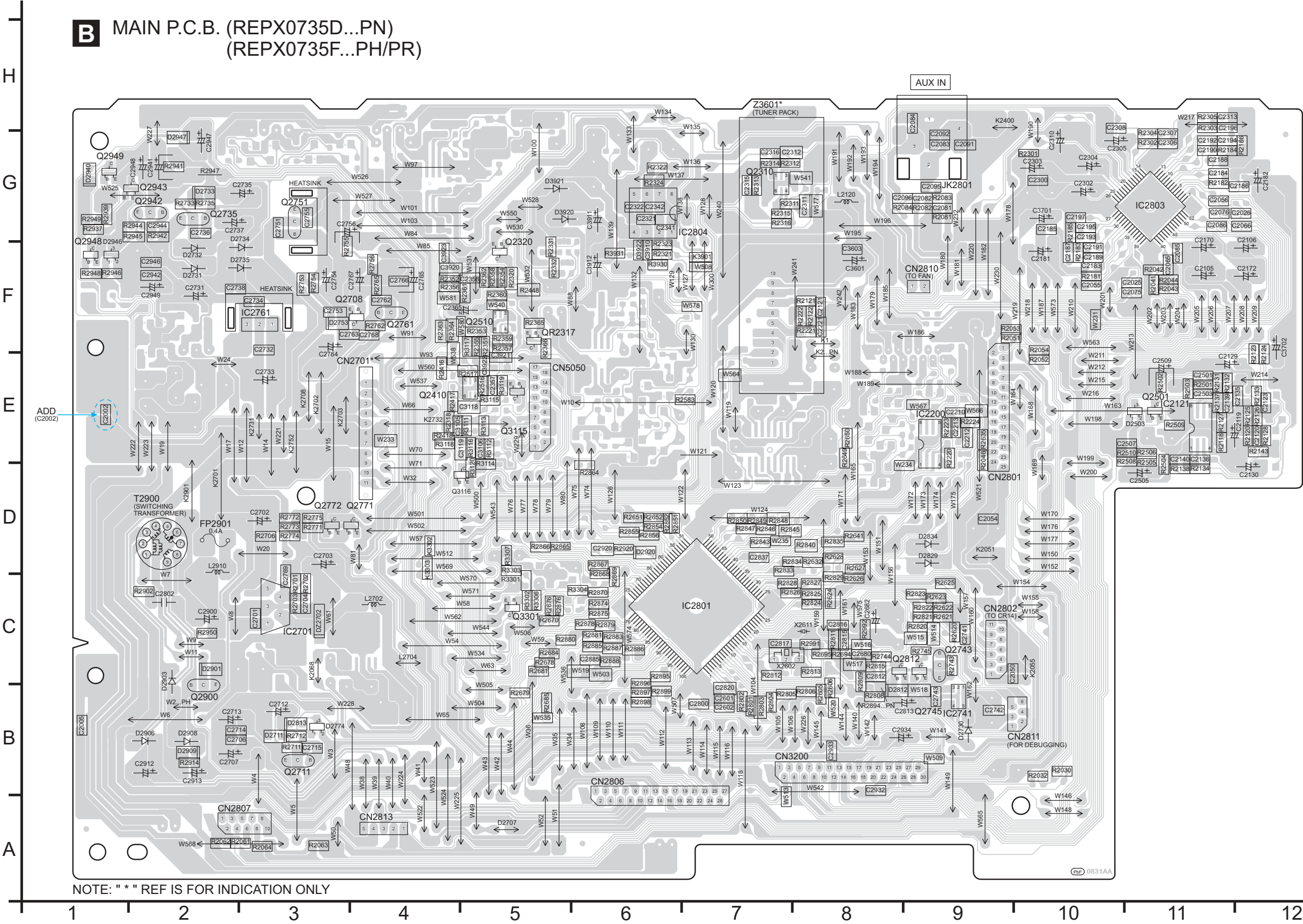
With reference to original service manual (section 17.1) on page 116 for Model No. SA-AK580PH/PN-K



3.2. Main P.C.B. for (SA-AK580PH/PN/PR)

With reference to original service manual (section 17.2) on page 117 for Model No. SA-AK580PH/PN-K

B MAIN P.C.B. (REPX0735D...PN)
(REPX0735F...PH/PR)

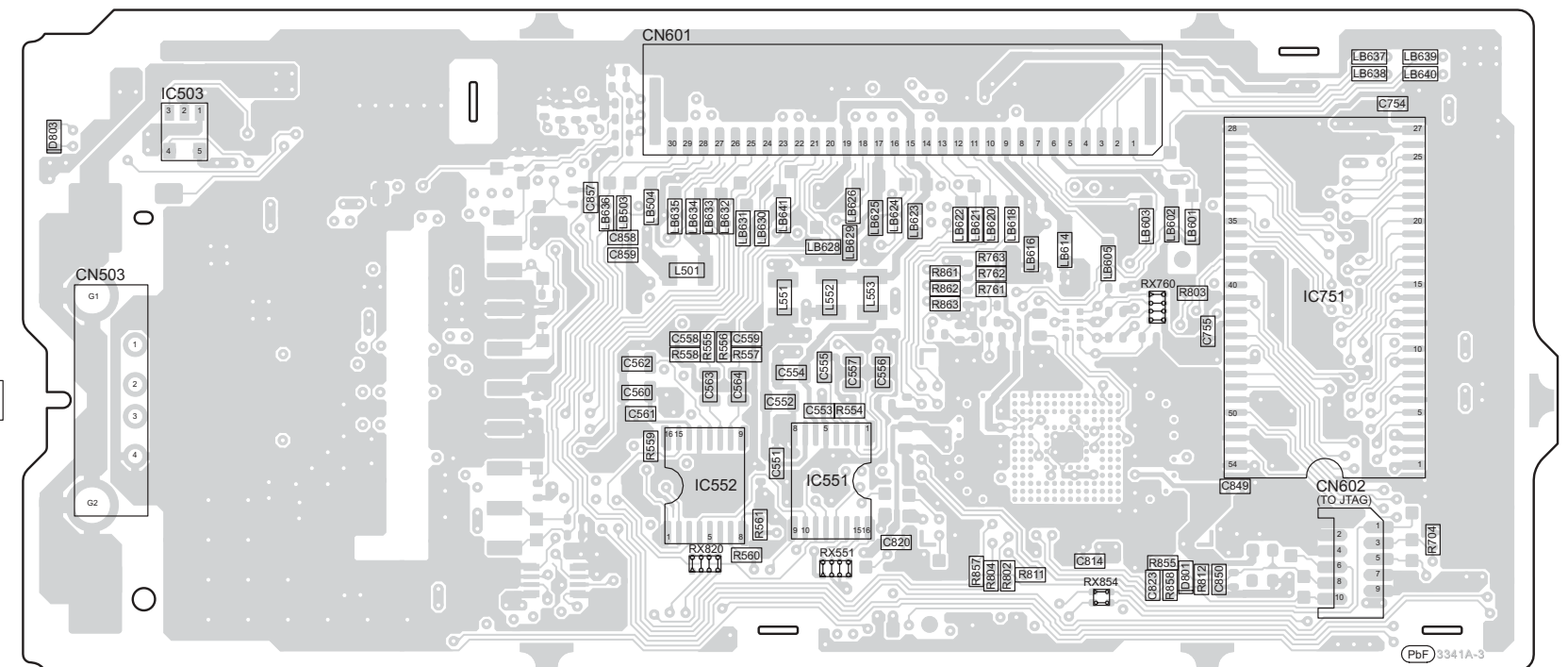


With reference to original service manual (section 17.1) on page 117 for Model No. SA-AK780PH/PN-K

With reference to original service manual (section 17.1) on page 117 for Model No. SA-AK780PH/PN-K

USB PORT

(SIDE A)



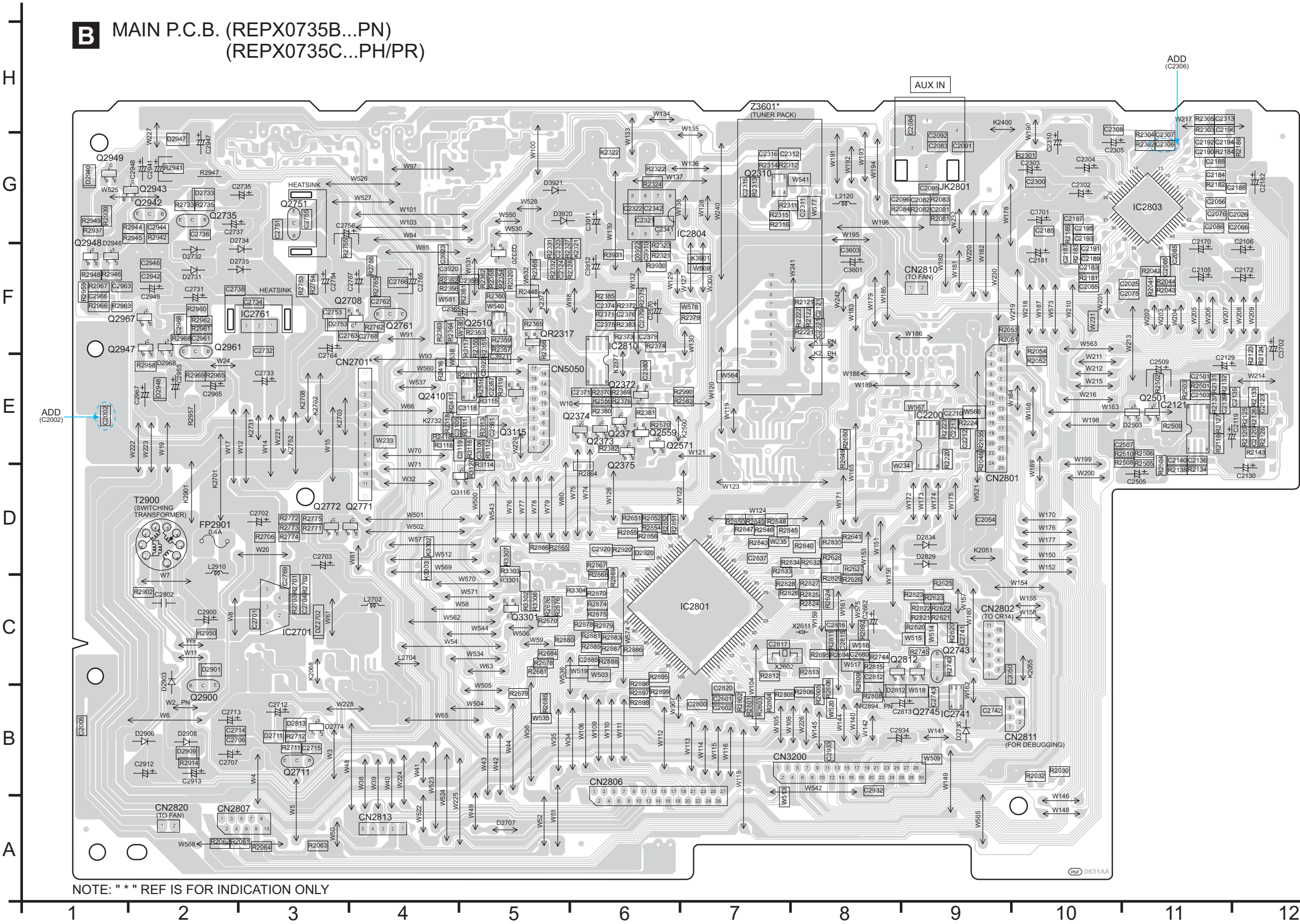
(SIDE B)

SA-AK780PH/PN/PR
CD SERVO/ JUPITER P.C.B.

3.4. Main P.C.B. for (SA-AK780PH/PN/PR)

With reference to original service manual (section 17.2) on page 118 for Model No. SA-AK780PH/PN-K

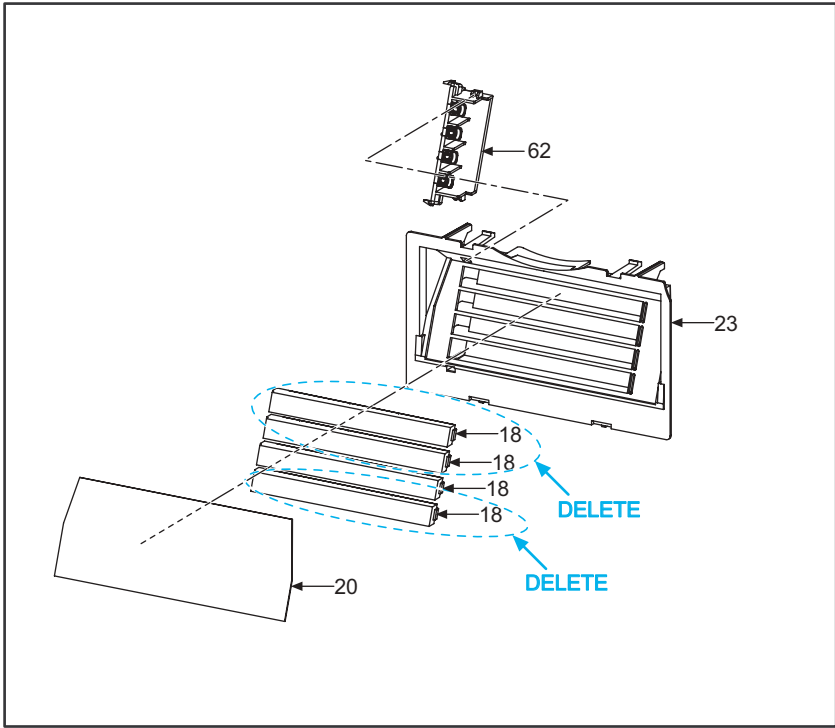
B MAIN P.C.B. (REPX0735B...PN)
(REPX0735C...PH/PR)



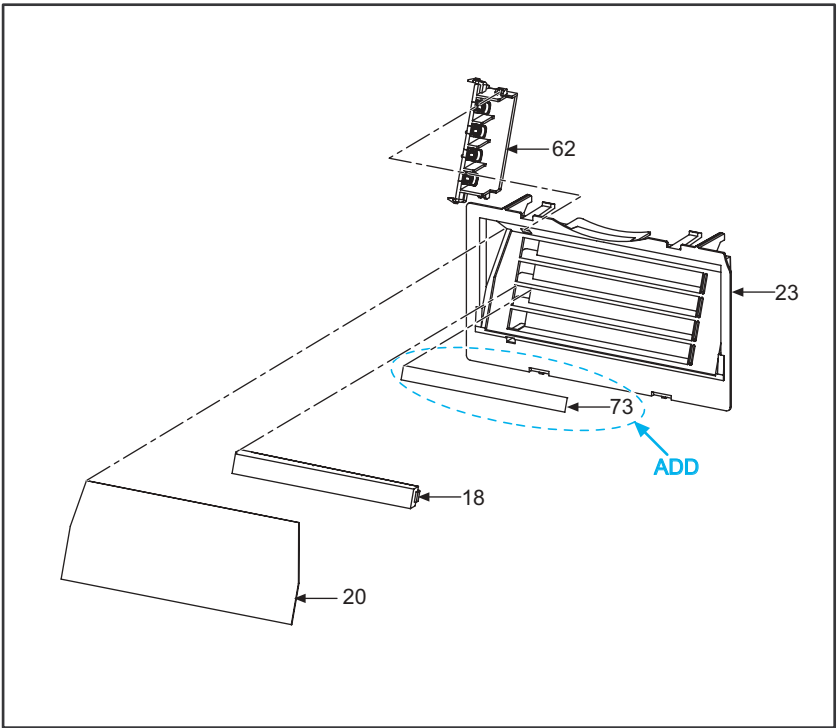
4 Exploded View

4.1. Cabinet Parts Location for (SA-AK580PH/PN-K)

BEFORE

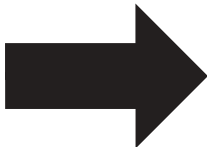
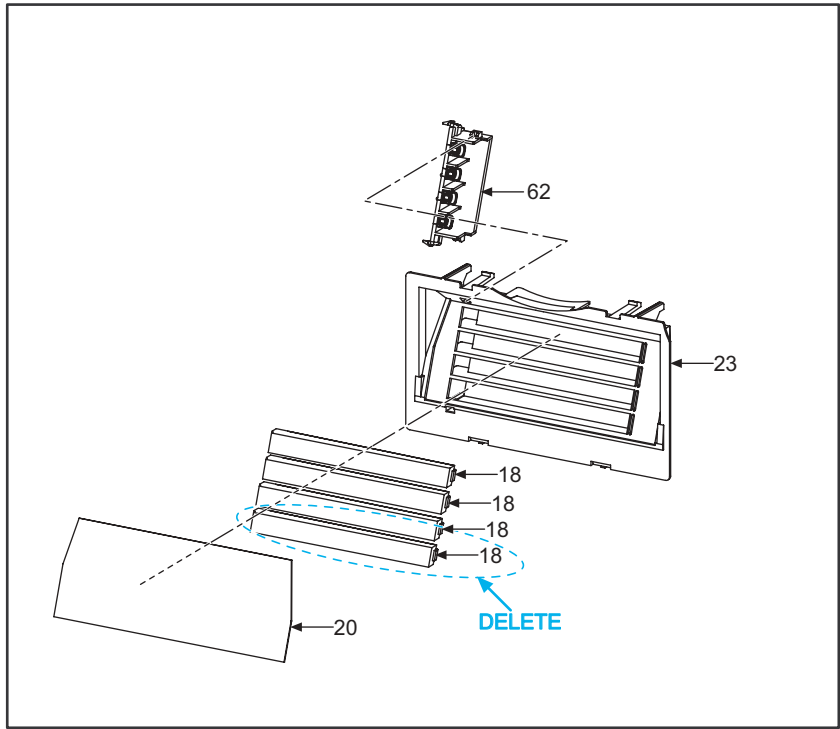


AFTER

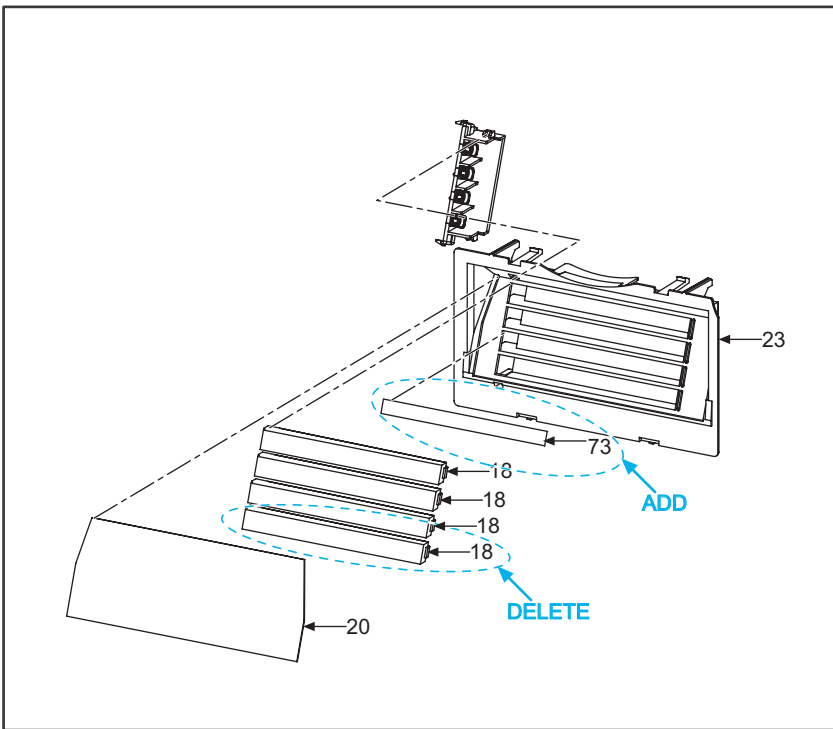


4.2. Cabinet Parts Location for (SA-AK780PH/PN-K)

BEFORE

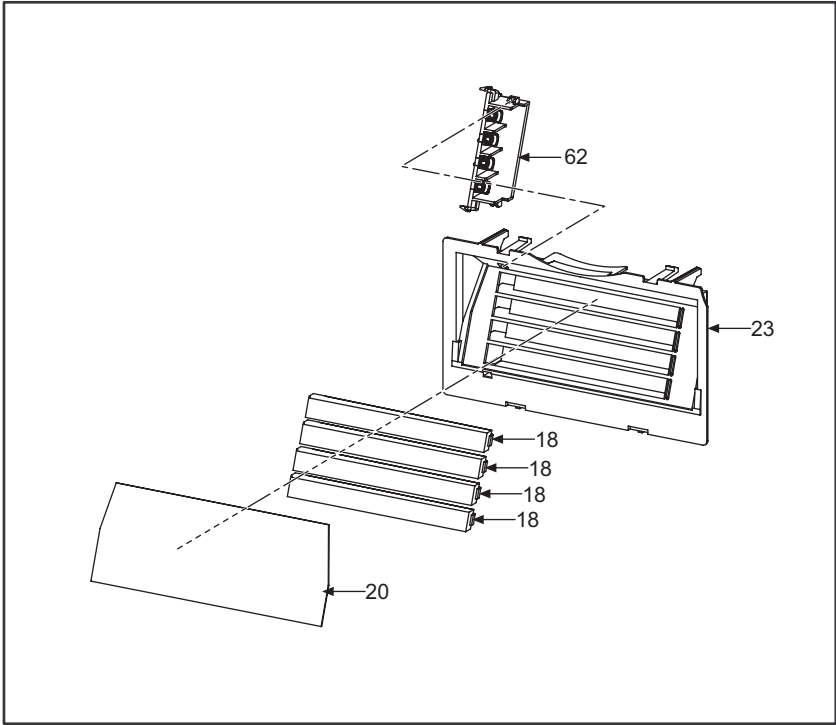


AFTER

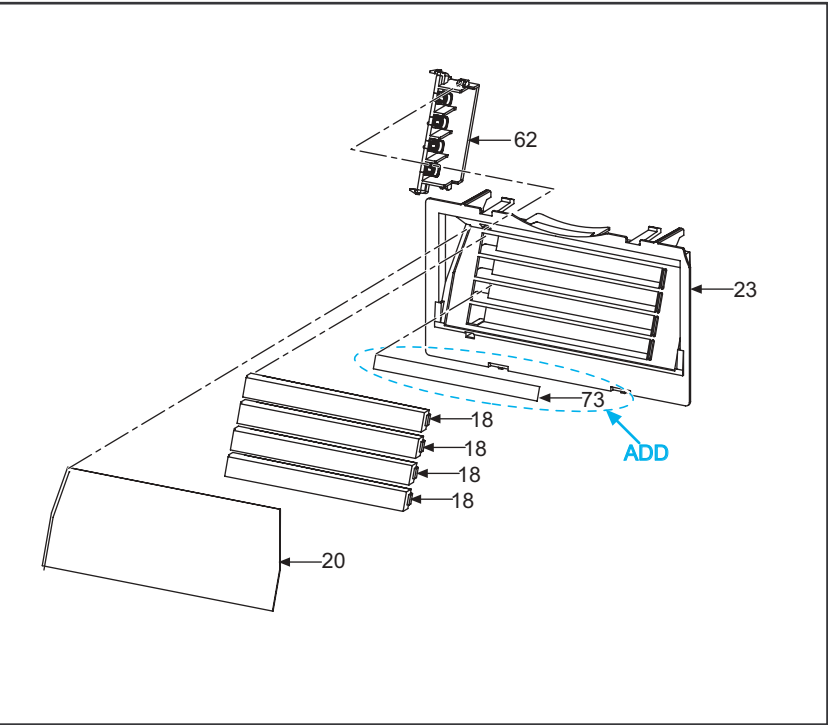


4.3. Cabinet Parts Location for (SA-AK980PU-K)

BEFORE



AFTER



5 Replacement Parts List

Reason for Change

*The circled item indicates the reason. If no marking, see the Notes in the bottom column.

<input type="radio"/>	1. Improve performance
	2. Change of material or dimension
	3. To meet approved specification
	4. Standardization
<input type="radio"/>	5. Addition
	6. Deletion
<input type="radio"/>	7. Correction
	8. Other

Interchangeability Code

**The circled item indicates the interchangeability. If no marking, see the Notes in the bottom column.

Parts	Set Production	
A Original New		Original or new parts may be used in early or late production set. Use original parts until exhausted, then stock new parts.
B Original New		Original parts may be used in early production sets only. New parts may be used in early or late production sets. Use original parts where possible, then stock new parts.
<input type="radio"/> C Original New		New parts only may be used in early or late production sets. Stock new parts.
D Original New		Original parts may be used in early production sets only. New parts may be used in late production sets only. Stock both original and new parts.
<input type="radio"/> E Other		

Please revise the original parts list in the Service Manual to conform to the change(s) shown herein.

If new part numbers are shown, be sure to use them when ordering parts.

Please file and use this manual together with the original service manual.

5.1. Mechanical Replacement Parts List

Model No.	Ref. No.	Original Part No.	New Part No.	QTY	NEW QTY	Notes	Part Name & Descriptions	Remarks
SA-AK580PH/PN/PR-K	18	RGLX0180-Q	-	4	1	7/E	MEMORY/USB LIGHT BAR	CHANGE
	73	-	RMQX0383-W	-	1	1/C	MEMORY LIGHT REFLECTION SHEET	ADD
SA-AK780PH/PN/PR-K	18	RGLX0180-Q	-	4	3	7/E	MEMORY/USB LIGHT BAR	CHANGE
	73	-	RMQX0383-W	-	1	1/C	MEMORY LIGHT REFLECTION SHEET	ADD
SA-AK980PU-K	73	-	RMQX0383-W	-	1	1/C	MEMORY LIGHT REFLECTION SHEET	ADD

5.2. Electrical Replacement Parts List

Model No.	Ref. No.	Original Part No.	New Part No.	Notes	New Part Name & Descriptions	Remarks
SA-AK580EB/EG-K	L2902	G0C101JA0052	G0C101JA0055	1/C	INDUCTOR	CHANGE
SA-AK580PH/PN/PR-K	C2002	-	D0GBR00JA008	5/C	0 1/16W	ADD
	C5800	ERJ6GEY0R00A	D0GDR00JA017	7/C	0 1/10W	CHANGE
	C5826	ERJ6GEY0R00A	D0GDR00JA017	7/C	0 1/10W	CHANGE

Model No.	Ref. No.	Original Part No.	New Part No.	Notes	New Part Name & Descriptions	Remarks
SA-AK780PH/PN/PR-K	C2002	-	D0GBR00JA008	5/C	0 1/16W	ADD
	C2306	-	F1H1C823A001	5/C	0.082uF 16V	ADD
	C5800	ERJ6GEY0R00A	D0GDR00JA017	7/C	0 1/10W	CHANGE
	C5826	ERJ6GEY0R00A	D0GDR00JA017	7/C	0 1/10W	CHANGE
	D6511	B3AEA0000131	B3AEA0000127	7/C	DIODE	CHANGE
	D6512	B3AEA0000131	B3AEA0000127	7/C	DIODE	CHANGE
	IC701	RFKWFAK780PN	RFKWFAK580PN	7/C	IC	CHANGE
	IC2200	RFKWEAK780PN	RFKWEAK580PN	7/C	IC	CHANGE
SA-AK780PH/PN/PR-K	IC2801	RFKWMAK780PN	RFKWMAK580PN	7/C	IC	CHANGE
	R2775	D0GB912JA041	D0GB912JA041	7/C	9.1K 1/10W	CHANGE

FLE0906