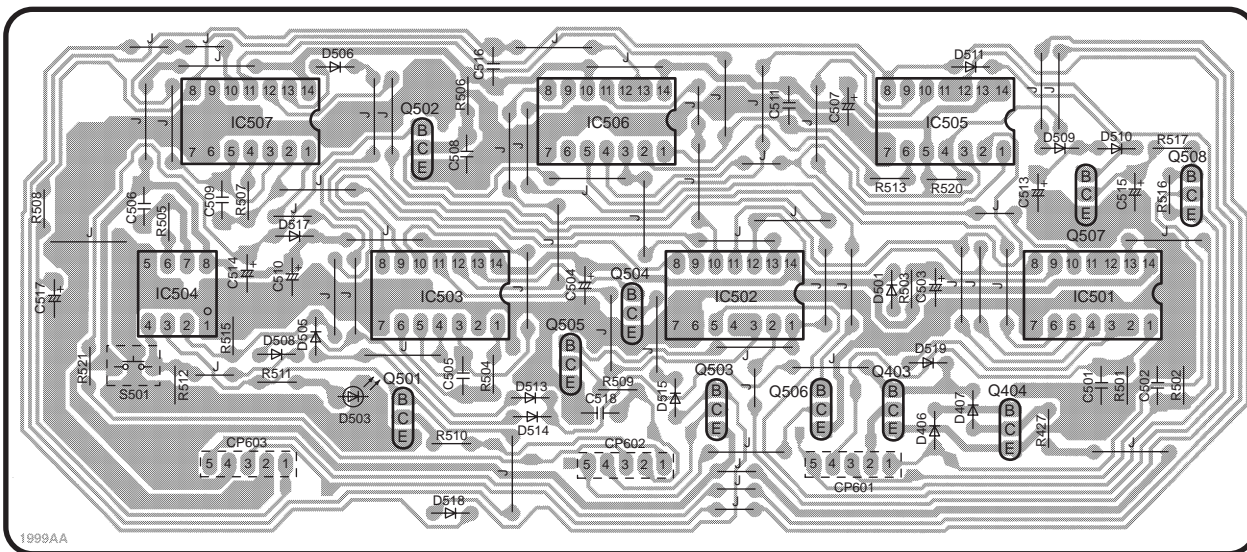
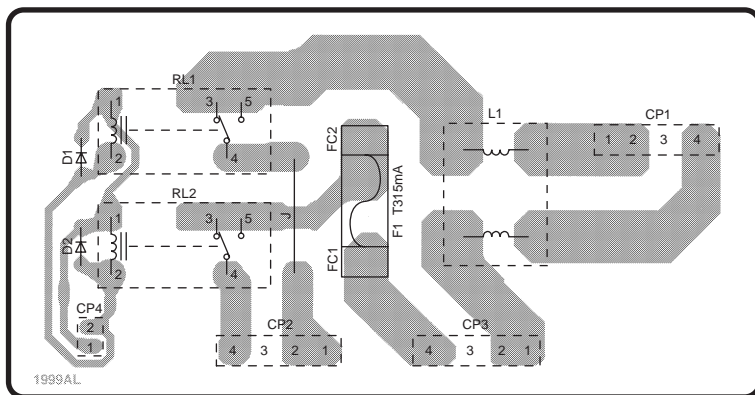


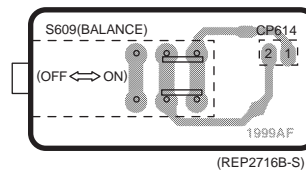
K RELAY CONTROL P.C.B.



L POWER SUPPLY P.C.B.



J BALANCE SW P.C.B.



ELECTRICAL PARTS LOCATION

| Ref. No. | Lo. No. | Ref. No. | Lo. No. | Ref. No. | Lo. No. | Ref. No. | Lo. No. | Ref. No. | Lo. No. | Ref. No. | Lo. No. |
|-------------------------------|---------|----------|---------|----------|---------|----------|---------|----------|---------|----------|---------|
| J BALANCE SW P.C.B. | | | | | | | | | | | |
| S609 | 5E | CP614 | 5F | | | | | | | | |
| K RELAY CONTROL P.C.B. | | | | | | | | | | | |
| IC501 | 2F | Q505 | 3C | D511 | 1E | R502 | 3F | R516 | 2F | C510 | 2B |
| IC502 | 2D | Q506 | 3D | D513 | 3C | R503 | 2E | R517 | 2F | C511 | 2D |
| IC503 | 2C | Q507 | 2F | D514 | 3C | R504 | 3C | R520 | 2E | C513 | 2E |
| IC504 | 2B | Q508 | 2F | D515 | 3D | R505 | 2B | R521 | 3A | C514 | 2B |
| IC505 | 2E | D406 | 3E | D517 | 2B | R506 | 2C | C501 | 3F | C515 | 2F |
| IC506 | 2D | D407 | 3E | D518 | 3C | R507 | 2B | C502 | 3F | C516 | 1C |
| IC507 | 2B | D501 | 2E | D519 | 3E | R508 | 2A | C503 | 2E | C517 | 2A |
| Q403 | 3E | D503 | 3B | S501 | 3A | R509 | 3D | C504 | 2C | C518 | 3C |
| Q404 | 3E | D505 | 3B | CP601 | 3E | R510 | 3C | C505 | 3C | | |
| Q501 | 3C | D506 | 1B | CP602 | 3D | R511 | 3B | C506 | 2A | | |
| Q502 | 2C | D508 | 3B | CP603 | 3B | R512 | 3B | C507 | 2E | | |
| Q503 | 3D | D509 | 2F | R427 | 3F | R513 | 2E | C508 | 2C | | |
| Q504 | 2D | D510 | 2F | R501 | 3F | R515 | 3B | C509 | 2B | | |
| L POWER SUPPLY P.C.B. | | | | | | | | | | | |
| D1 | 5A | L1 | 5C | RL1 | 5A | FC1 | 5B | CP1 | 5D | CP3 | 6C |
| D2 | 5A | F1 | 5B | RL2 | 5A | FC2 | 5B | CP2 | 6B | CP4 | 6A |