

PMX2000

EUROPOWER

Technical Specifications

Version 1.0 September 2002

ENGLISH



www.behringer.com

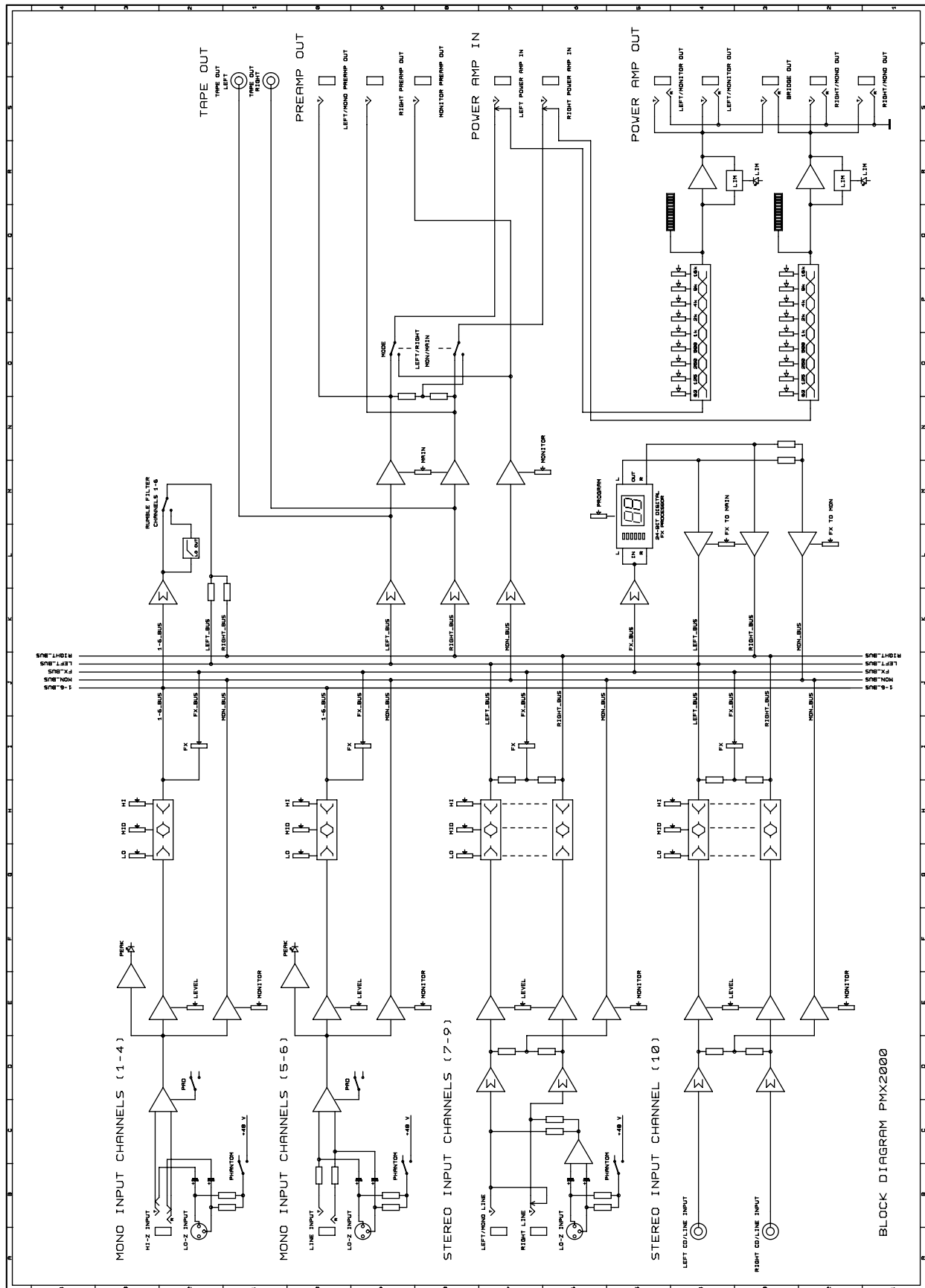
EUROPOWER

Ultra-2 x 250-Watt 10-Channel Power Mixer with 24-Bit Digital Effects Processor

- ▲ 2 x 250-Watt (500 Watts bridge mode) power amp with full protection
- ▲ Ultra low-noise ULN design, highest possible headroom, ultra-transparent audio
- ▲ 10-channel mixer section comprising six mono and three stereo channels plus separate tape return channel
- ▲ 9 state-of-the-art, studio-grade IMP "Invisible" Mic Preamps
- ▲ Switchable +48 V phantom power for condenser microphones
- ▲ 12 balanced high-headroom line inputs
- ▲ Effective, extremely musical 3-band EQ, switchable pad and peak LED's on all mono channels
- ▲ 9-band stereo graphic EQ allows precise frequency correction of monitor and main mixes
- ▲ Main level and monitor level controls with precise, 5-digit LED level meter
- ▲ Integrated 24-bit digital stereo FX processor with 99 outstanding VIRTUALIZER presets including reverb, delay, chorus, flanger, vocal distortion, vinylizer and more plus 1 kHz test tone generator
- ▲ Optional stereo (main L/R) or double mono (main/monitor) operation possible
- ▲ Multi-functional stereo preamp outputs and stereo power amp inputs for added flexibility
- ▲ Professional Speakon® loudspeaker connectors
- ▲ Extremely rugged construction ensures long life even under the most demanding conditions
- ▲ Manufactured under ISO9000 certified management system

EUROPOWER PMX2000

BLOCK DIAGRAM



EUROPOWER PMX2000

SPECIFICATIONS

Mono inputs

Microphone inputs

Type XLR, electronically balanced, discrete input circuit

Mic E.I.N. (20 Hz - 20 kHz)

@ 0 Ω source resistance -122 dB / 125 dB A-weighted

@ 50 Ω source resistance -122 dB / 125 dB A-weighted

@ 150 Ω source resistance -121 dB / 124 dB A-weighted

Frequency response <10 Hz - 100 kHz (-1 dB),
<10 Hz - >200 kHz (-3 dB)

Gain +33 dB, +8 dB with pad

Max. input level +12 dBu @ +8 dB gain

Impedance approx. 2.2 k Ω balanced /
1.1 k Ω unbalanced

Signal-to-noise ratio 110 dB / 114 dB A-weighted
(-11 dBu In @ +33 dB gain)

Distortion (THD+N) 0.001% / 0.0008% A-weighted

Mono line inputs

Type 1/4" TRS connector, balanced

Impedance approx. 80 k Ω balanced,
40 k Ω unbalanced

Max. input level 30 dBu

Stereo line inputs

Type 1/4" TRS connector, unbalanced

Impedance approx. 40 k Ω unbalanced

Max. input level +28 dBu

EQ

Low 60 Hz / ± 15 dB

Mid 700 Hz / ± 15 dB

High 6 kHz / ± 15 dB

Preamp outputs left/mono & right

Type 1/4" TRS connector, unbalanced

Impedance approx. 1.5 k Ω

Max. output level +21 dBu

Power amp inputs

Type 1/4" TRS connector, unbalanced

Impedance approx. 47 k Ω

Max. input level +21 dBu

Monitor output

Type 1/4" TRS connector, unbalanced

Impedance 1.5 k Ω

Max. output level +21 dBu

DSP

Converter 24-bit Texas Instruments™

24-bit Sigma-Delta,

64/128-times oversampling

Sampling rate 46.875 kHz

Main mix system data¹

Noise

Main mix @ - ∞ ,
Channel fader - ∞ -76 dB / -80 dB A-weighted

Main mix @ 0 dB,
Channel fader - ∞ -72 dB / -76 dB A-weighted

Main Mix @ 0 dB,
Channel fader @ 0 dB -71 dB / -75 dB A-weighted

Power amp specifications

Power amp output

Stereo mode 250 Watts into 4 Ω

180 Watts into 8 Ω

"Bridge" mode 500 Watts into 8 Ω

Loudspeaker connections

Loudspeaker connector NEUTRIK NL4MP SPEAKON®
connector

Load impedance

Left/monitor 4/8/16 Ω

Right/mono main 4/8/16 Ω

Bridge 8/16 Ω

Power supply

Mains voltages

U.S./Canada 120 V ~, 60 Hz

U.K./Australia 240 V ~, 50 Hz

Europe 230 V ~, 50 Hz

General export model 100-120V~, 200-240V~, 50-60Hz

Power consumption max. 1 kW

Fuse 100 - 120 V ~: **T 10 A H**

200 - 240 V ~: **T 6.3 A H**

Mains connection Standard IEC receptacle

Physical/weight

Dimensions (H x W x D)

approx. 11" (280 mm) x 18 1/8"

(460 mm) x 10 5/8" (270 mm)

Weight (net)

approx. 15 kg (33 lbs)

Measuring conditions:

1: 20 Hz - 20kHz; measured at preamp output.

All channels: level controls in center position; EQ flat.

Reference = 0 dBu.

BEHRINGER is constantly striving to maintain the highest professional standards. As a result of these efforts, modifications may be made from time to time to existing products without prior notice. Specifications and appearance may differ from those listed or illustrated.

The information contained in this manual is subject to change without notice. No part of this manual may be reproduced or transmitted in any form or by any means, electronic or mechanical, including photocopying and recording of any kind, for any purpose, without the express written permission of BEHRINGER Spezielle Studioteknik GmbH.

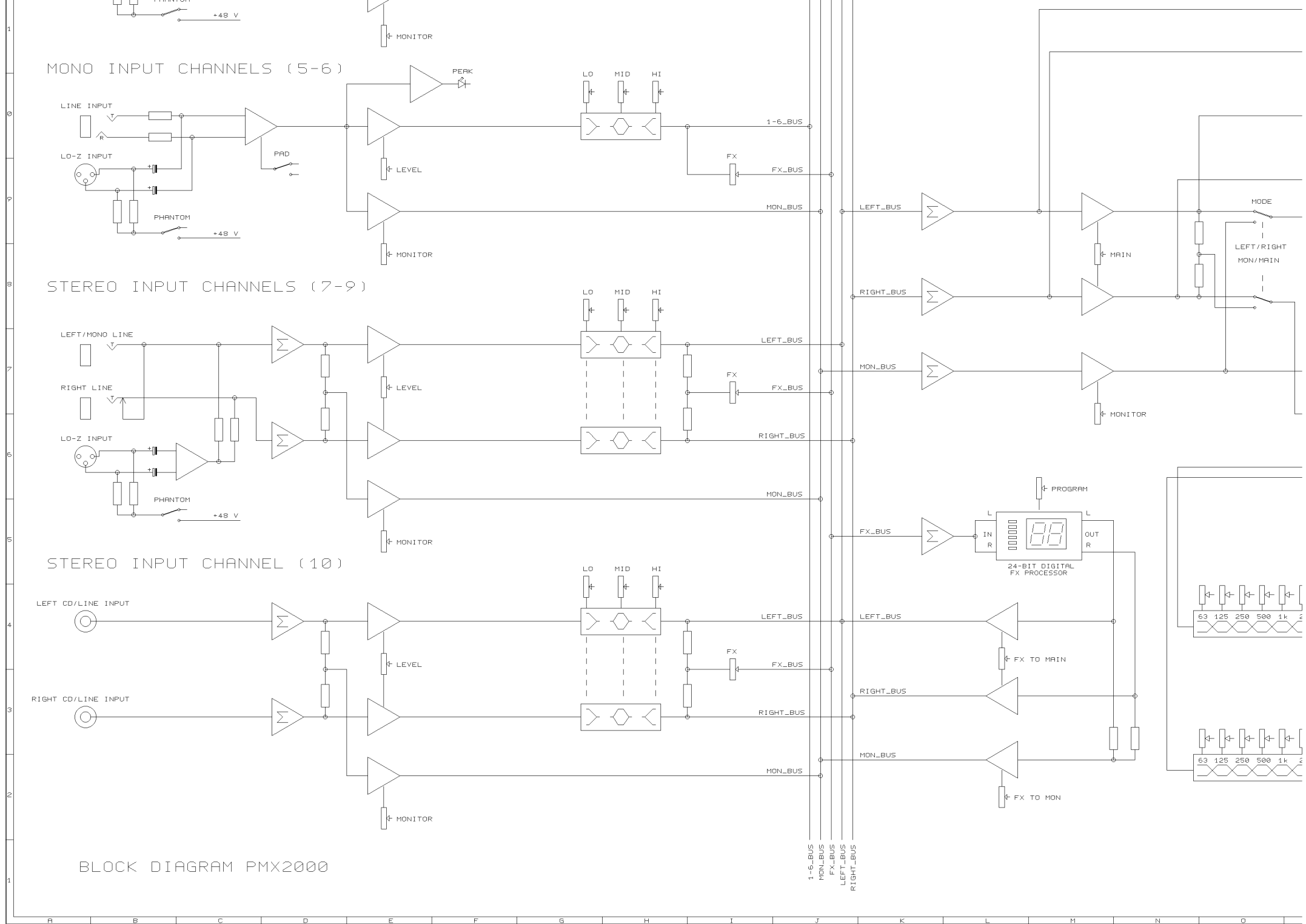
BEHRINGER and EUROPOWER are registered trademarks. ALL RIGHTS RESERVED.

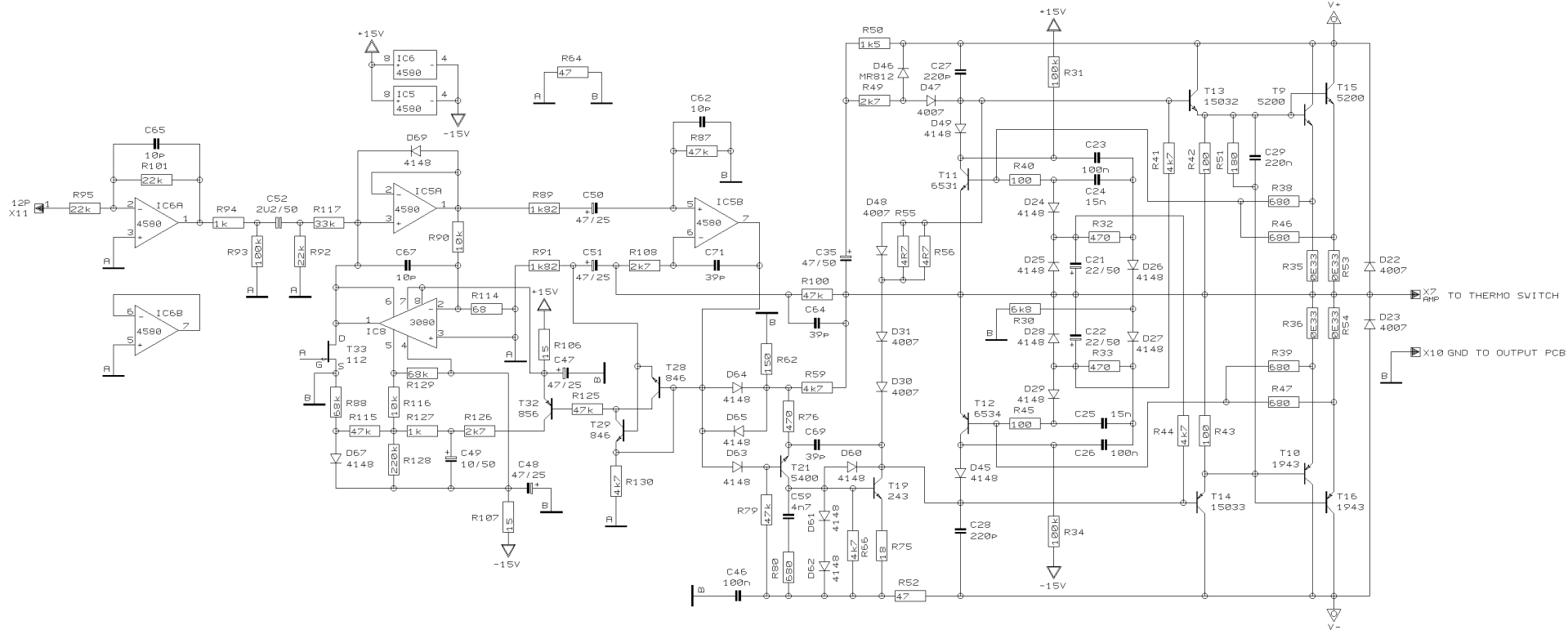
TEXAS INSTRUMENTS™ is a registered trademark of Texas Instruments Incorporated, which is in no way associated or affiliated with BEHRINGER. SPEAKON® is a registered trademark of NEUTRIK with no connection whatsoever to BEHRINGER.

© 2002 BEHRINGER Spezielle Studioteknik GmbH.

BEHRINGER Spezielle Studioteknik GmbH, Hanns-Martin-Schleyer-Str. 36-38, 47877 Willich-Münchheide II, Germany

Tel. +49 (0) 21 54 / 92 06-0, Fax +49 (0) 21 54 / 92 06-30





REVISIONS

E

DRAWN

BHK

CHECKED

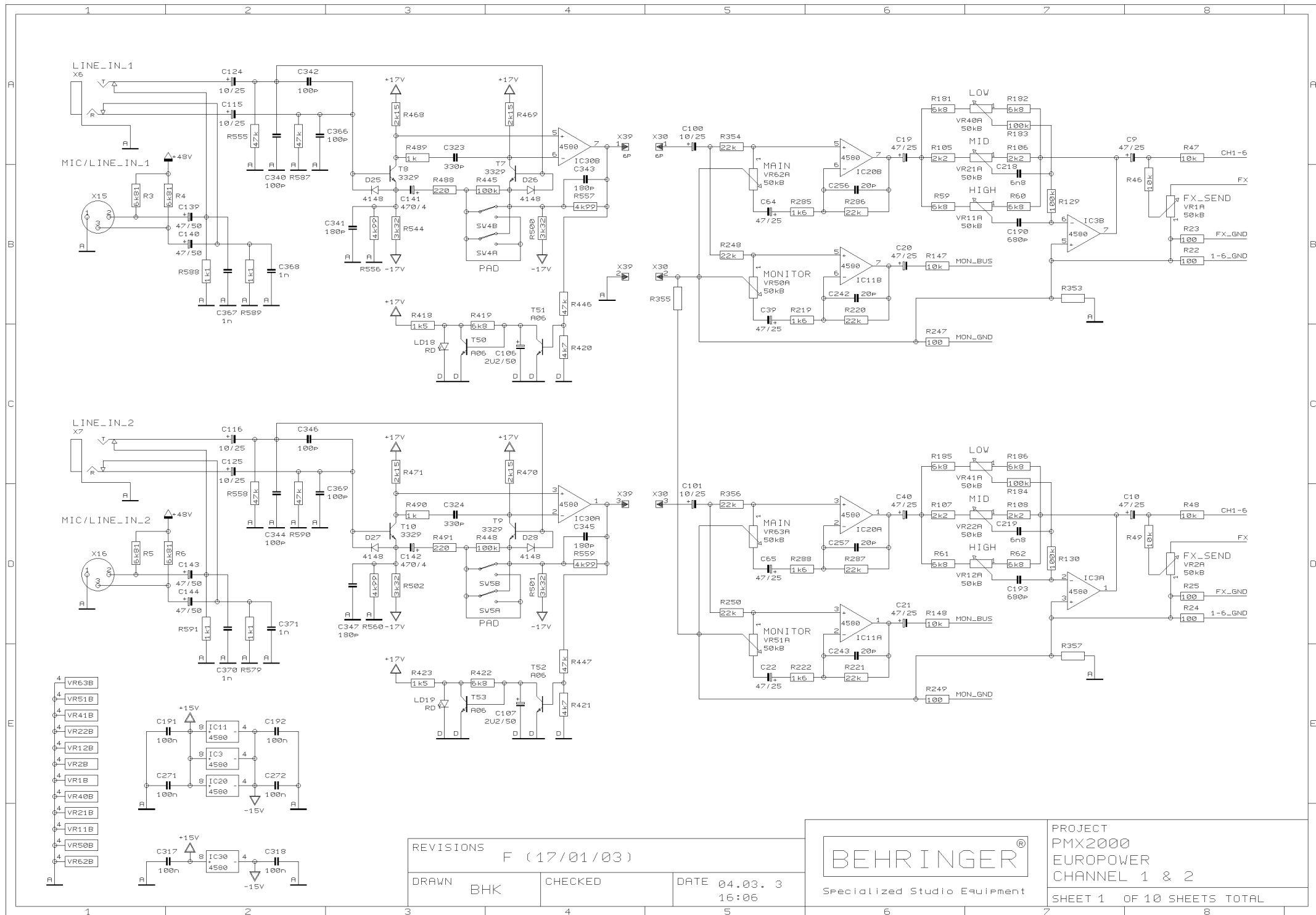
DATE 19.02. 3
17:16

BEHRINGER®

Specialized Studio Equipment

PROJECT
P2502
EUROPOWER
POWER AMP_LR

SHEET 2 OF 2 SHEETS TOTAL



REVISIONS F (17/01/03)

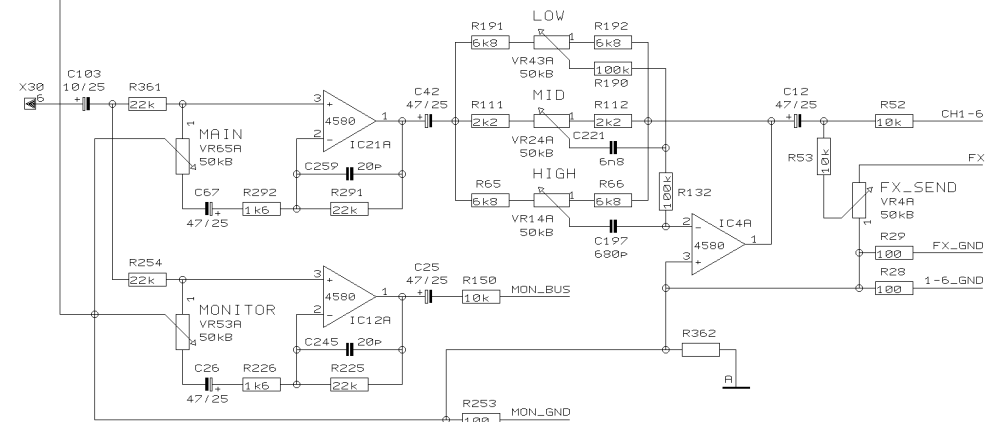
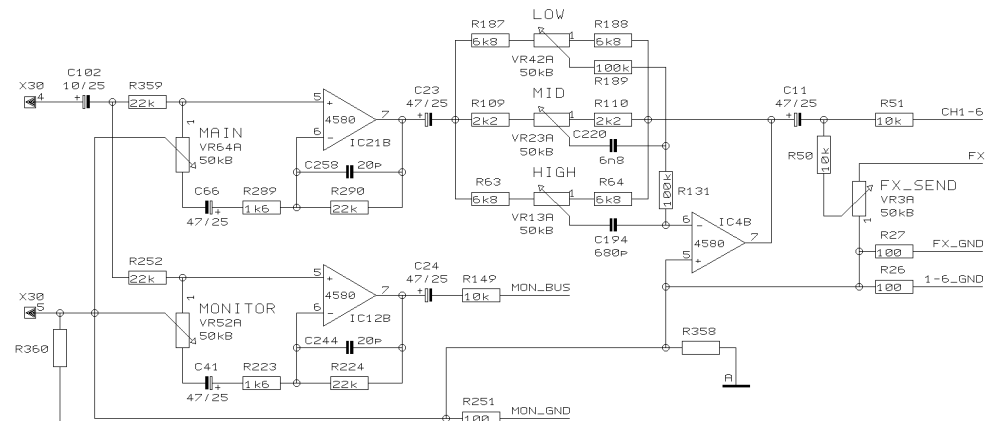
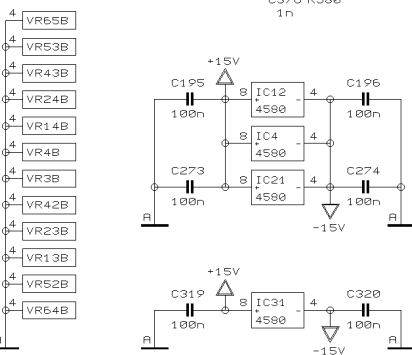
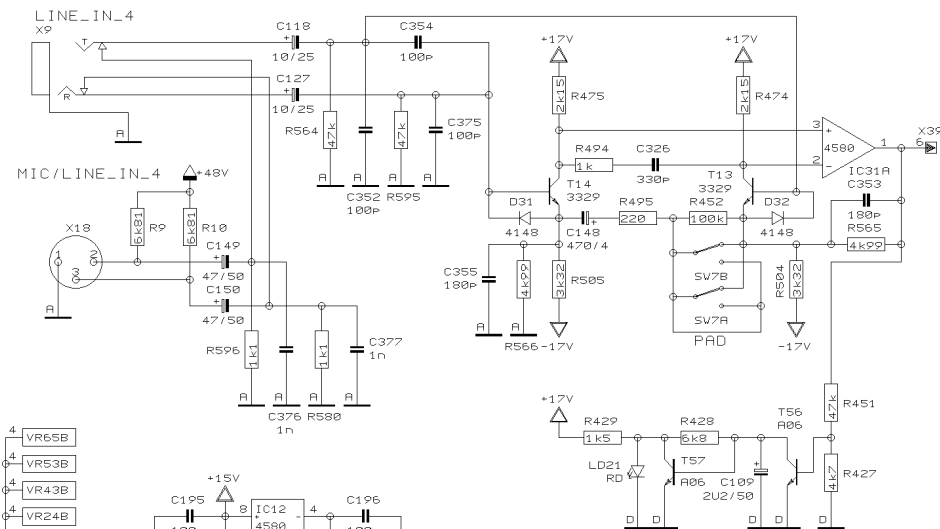
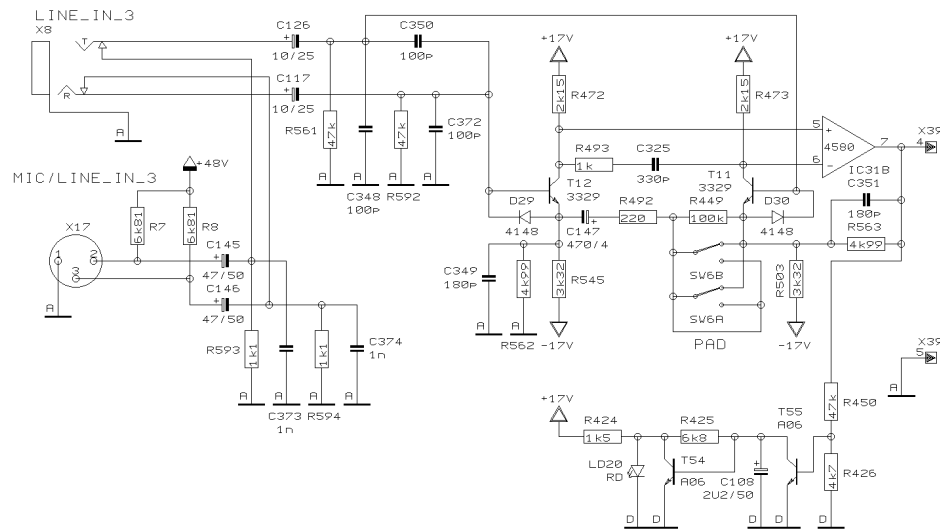
DRAWN BHK

CHECKED

DATE 04.03. 3
16:06

BEHRINGER®
Specialized Studio Equipment

PROJECT
PMX2000
EUROPOWER
CHANNEL 1 & 2
SHEET 1 OF 10 SHEETS TOTAL



REVISIONS F

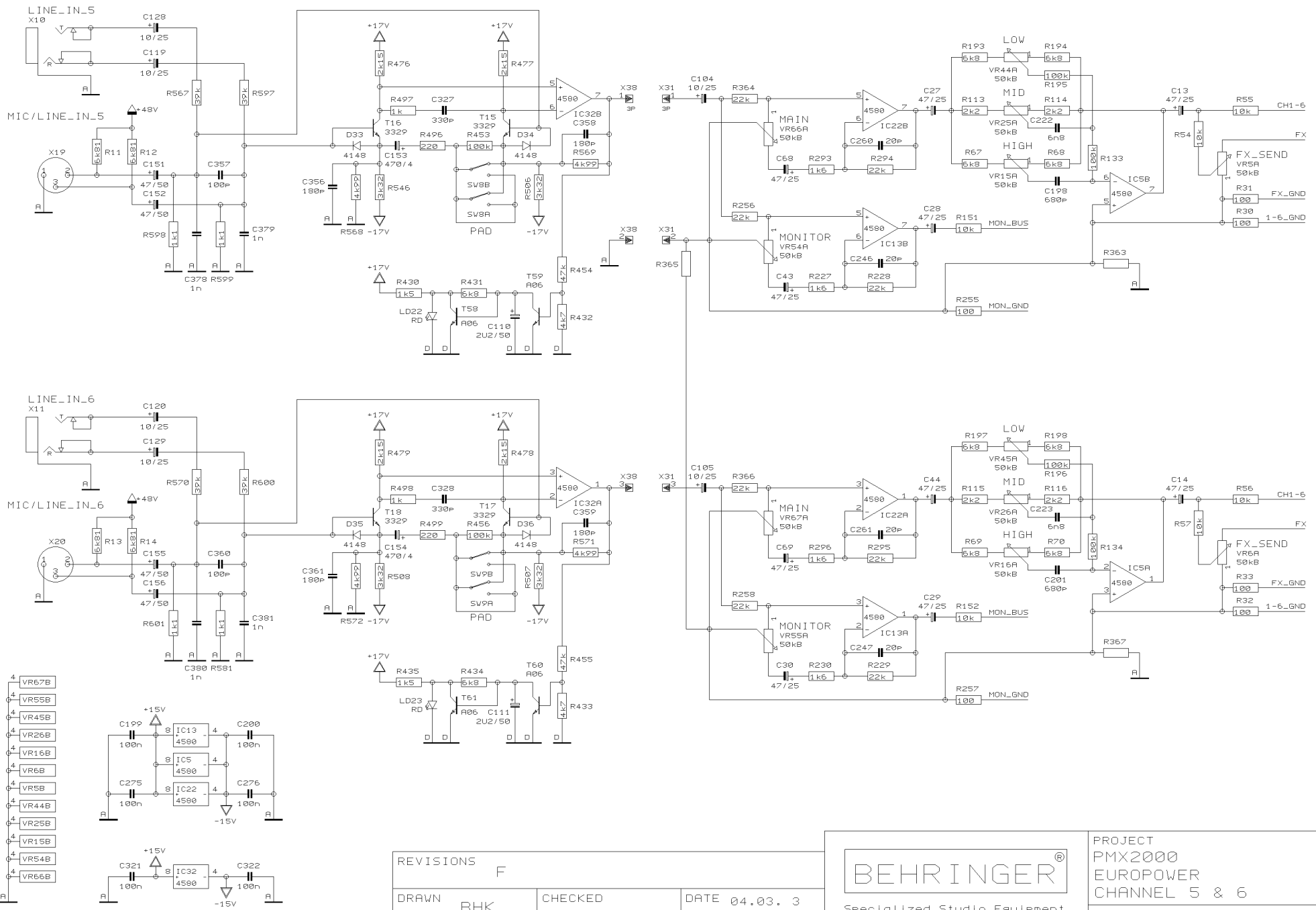
DRAWN BHK

CHECKED

DATE 04.03. 3
16:06



PROJECT
PMX2000
EUROPOWER
CHANNEL 3 & 4
SHEET 2 OF 10 SHEETS TOTAL



REVISIONS
F

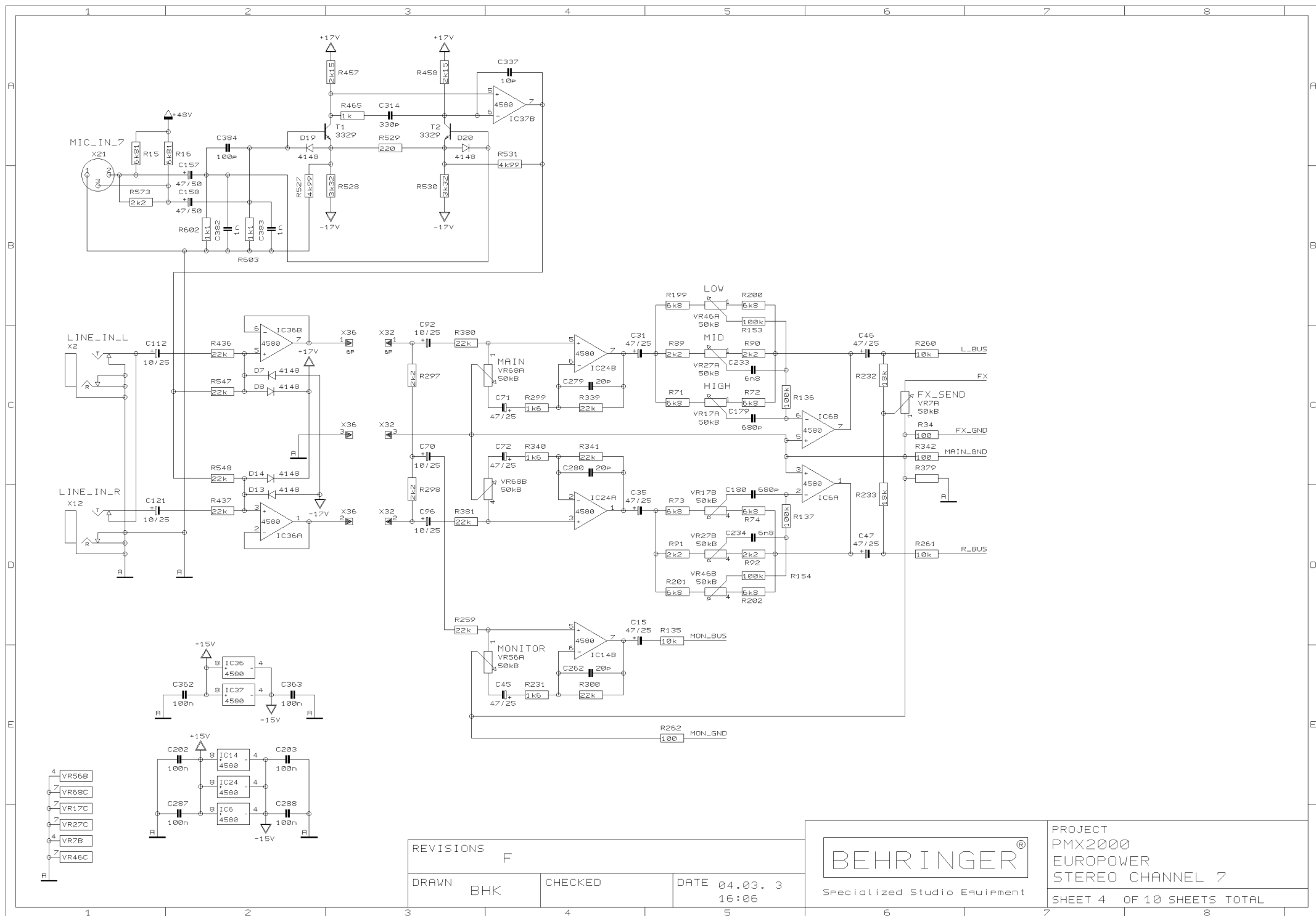
DRAWN
BHK

CHECKED

DATE 04.03. 3
16:06

BEHRINGER®
Specialized Studio Equipment

PROJECT
PMX2000
EUROPOWER
CHANNEL 5 & 6
SHEET 3 OF 10 SHEETS TOTAL



REVISIONS

F

DRAWN

BHK

CHECKED

DATE 04.03. 3

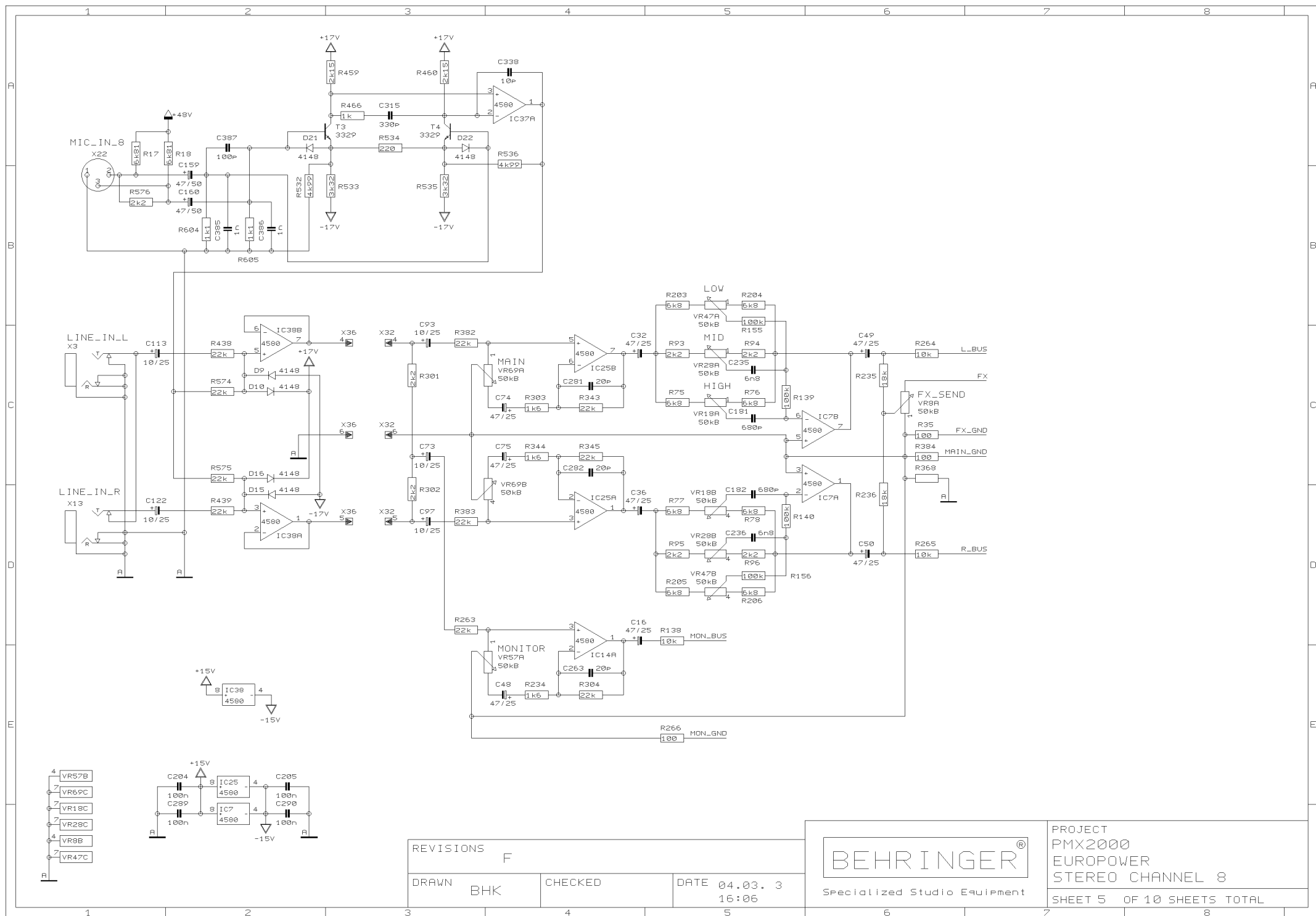
16:06

BEHRINGER®

Specialized Studio Equipment

PROJECT
PMX2000
EUROPOWER
STEREO CHANNEL 7

SHEET 4 OF 10 SHEETS TOTAL



REVISIONS

DRAWN

BHK

CHECKED

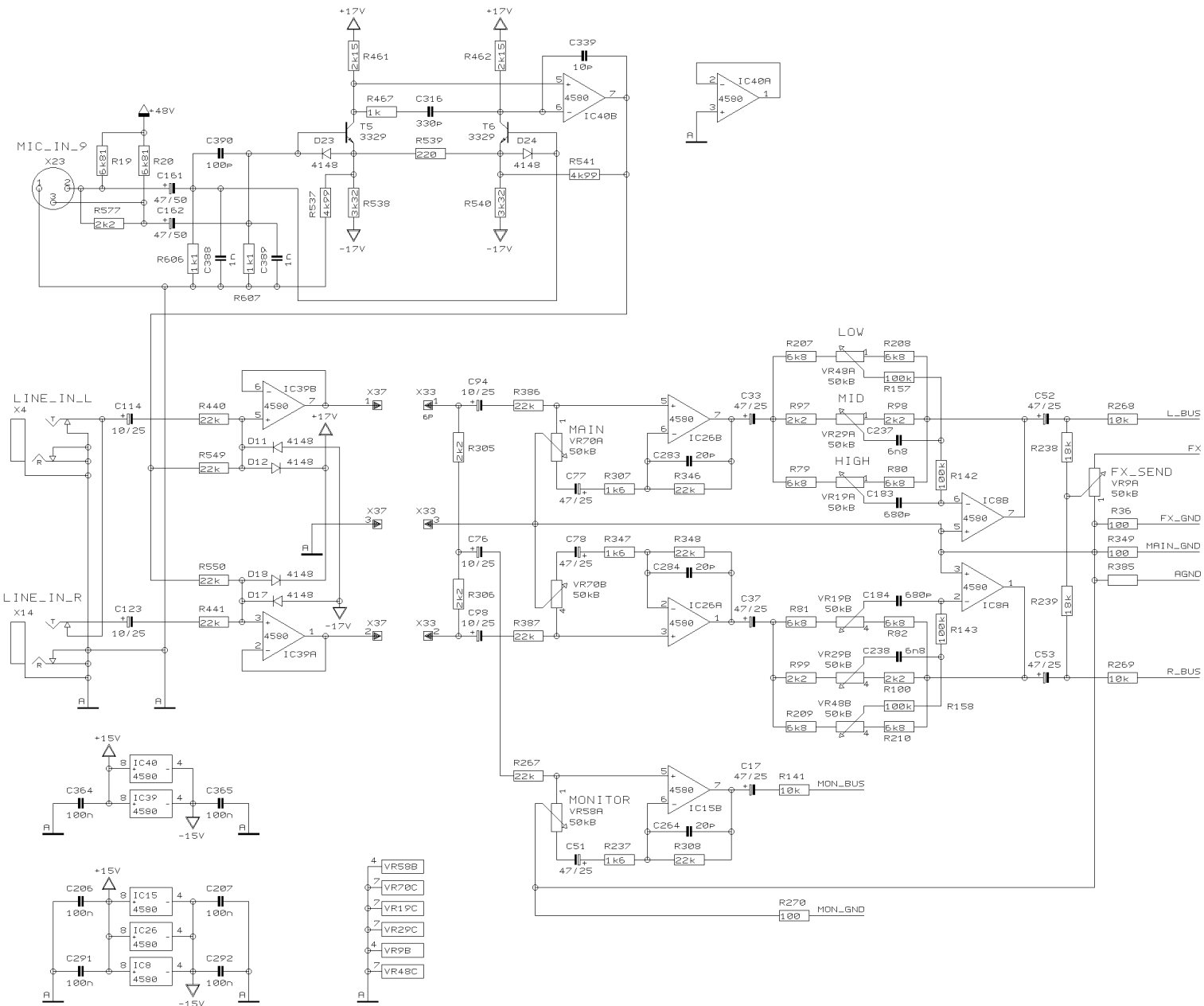
DATE 04.03. 3
16:06

BEHRINGER®

Specialized Studio Equipment

PROJECT
PMX2000
EUROPOWER
STEREO CHANNEL 8

SHEET 5 OF 10 SHEETS TOTAL



REVISIONS

F

DRAWN

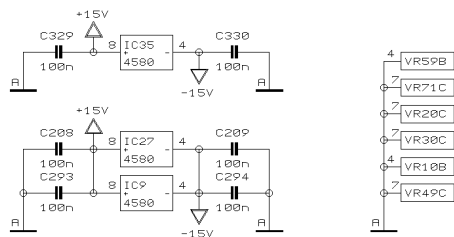
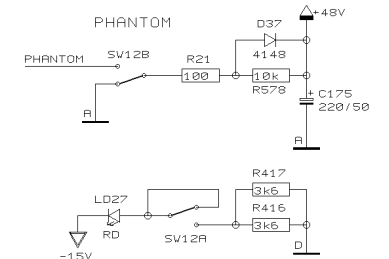
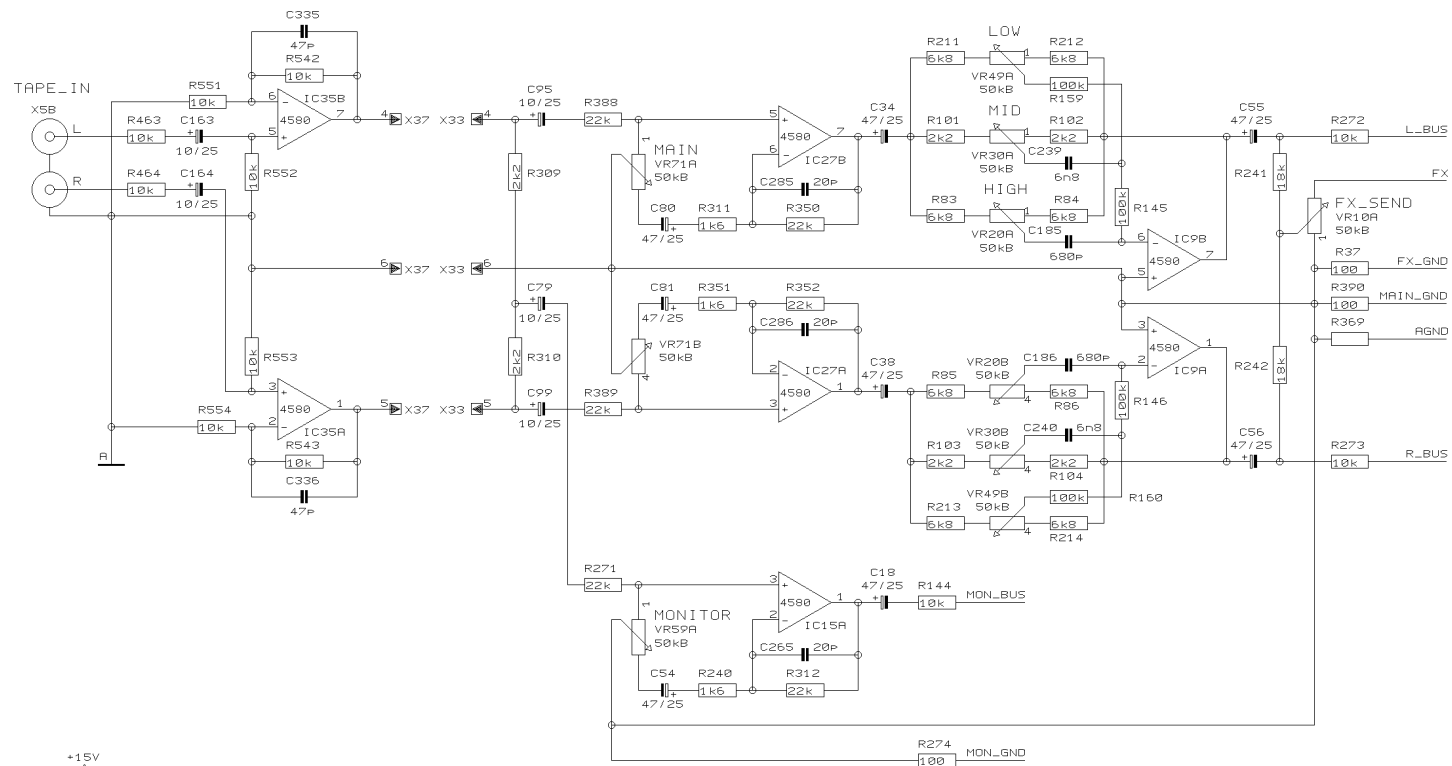
BHK

CHECKED

DATE 04.03. 3
16:06

BEHRINGER®
Specialized Studio Equipment

PROJECT
PMX2000
EUROPOWER
STEREO CHANNEL 9
SHEET 6 OF 10 SHEETS TOTAL



REVISIONS

F

DRAWN

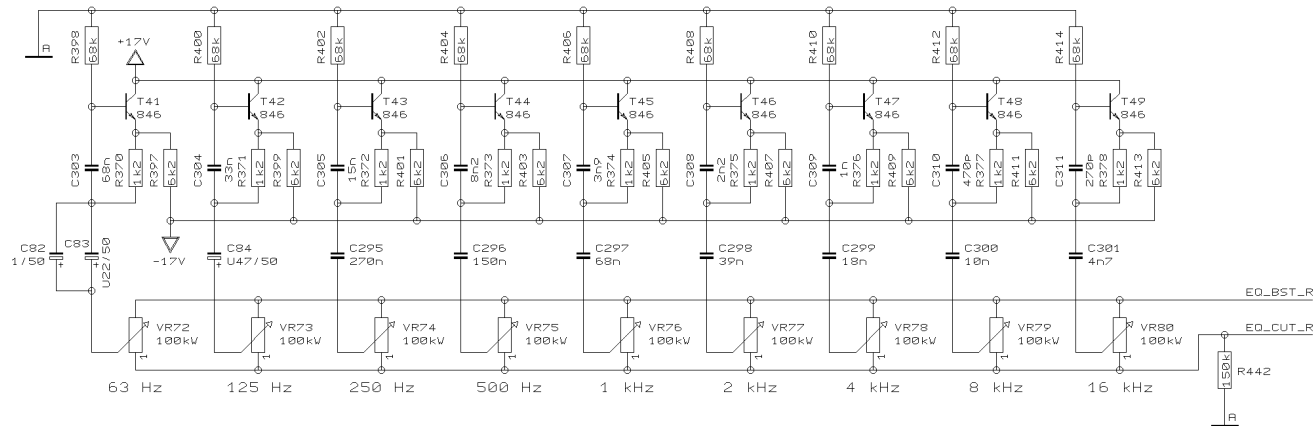
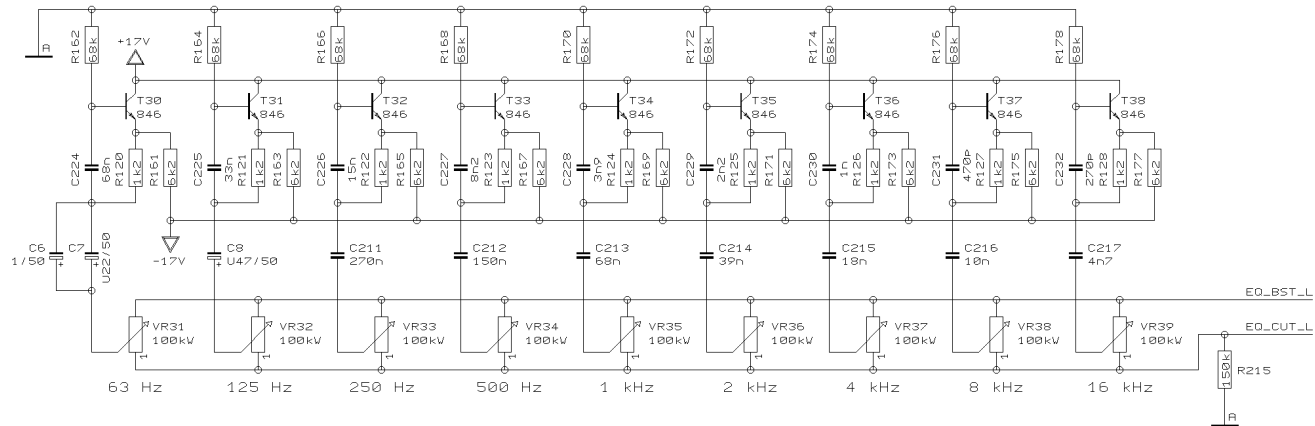
BHK

CHECKED

DATE 04.03. 3
16:06

BEHRINGER®
Specialized Studio Equipment

PROJECT
PMX2000
EUROPOWER
STEREO CHANNEL 10
SHEET 7 OF 10 SHEETS TOTAL



REVISIONS

F

DRAWN

BHK

CHECKED

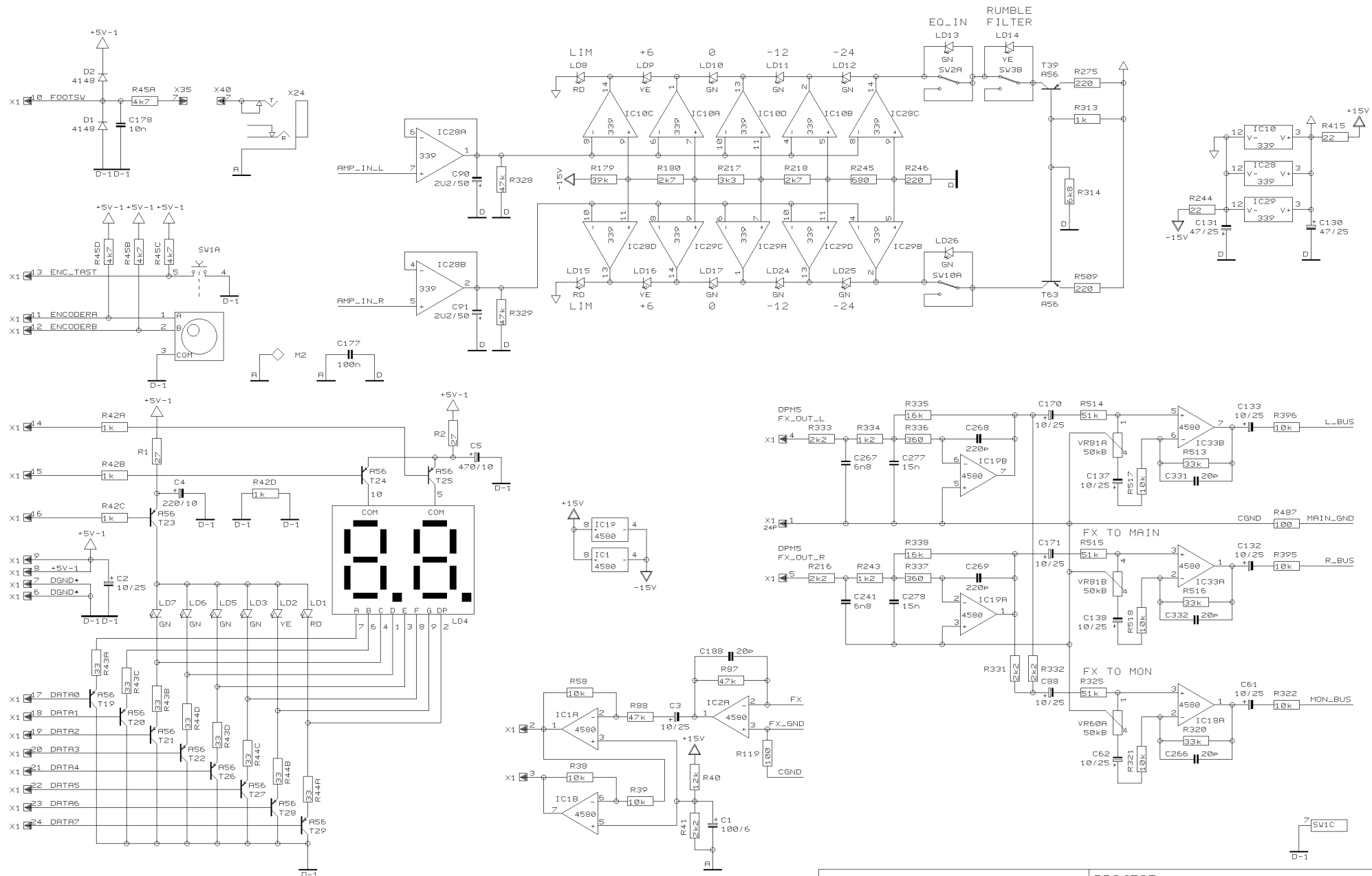
DATE 04.03. 3
16:06

BEHRINGER®
Specialized Studio Equipment

PROJECT
PMX2000
EUROPOWER
GRAPHIK EQ

SHEET 8 OF 10 SHEETS TOTAL





REVISIONS
F

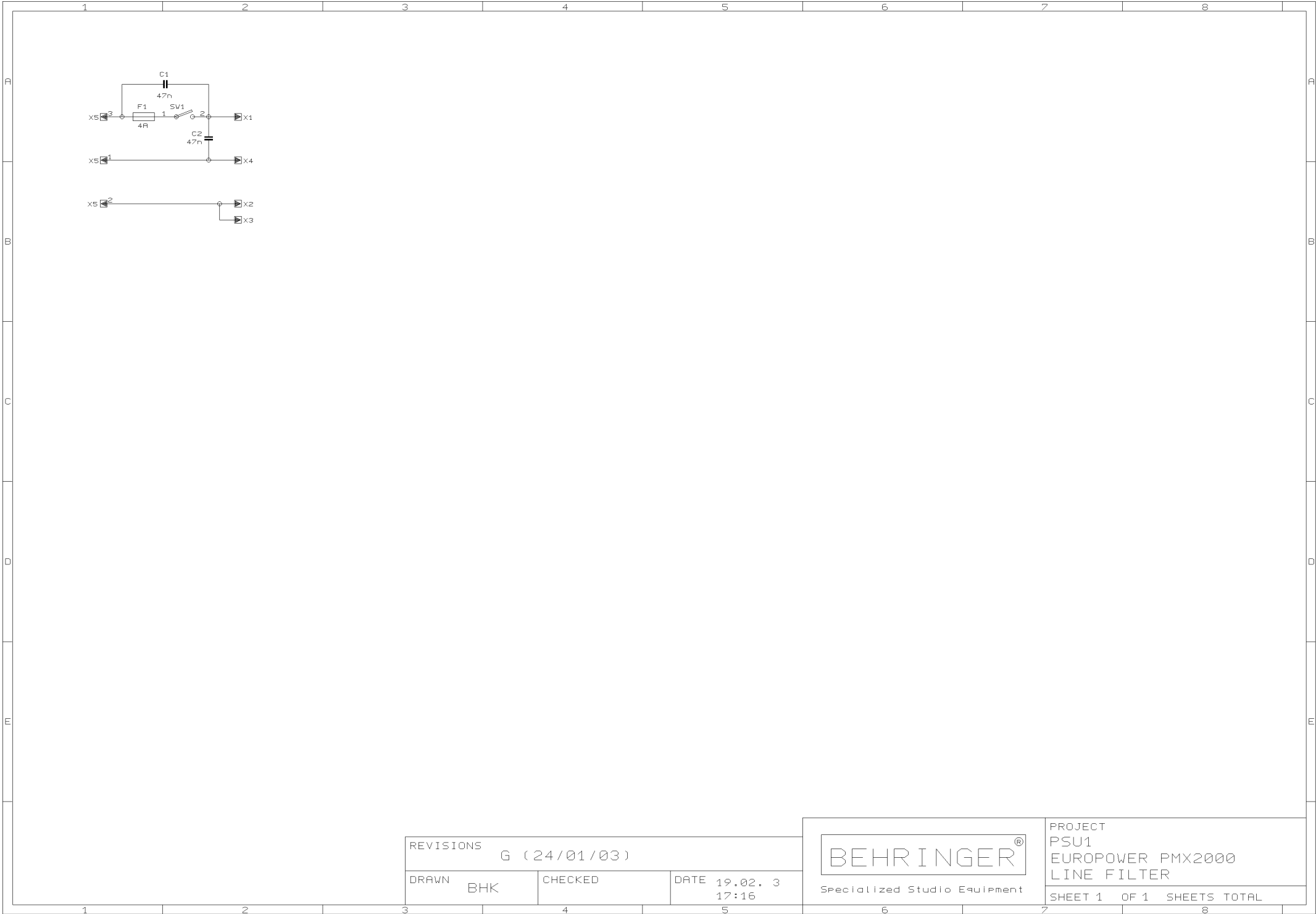
DRAWN
BHK

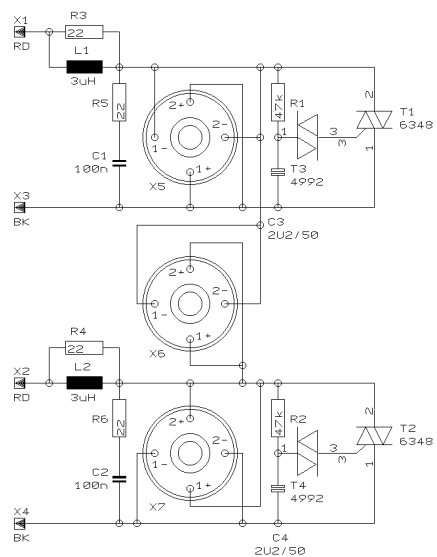
CHECKED

DATE 04.03. 3
16:07

BEHRINGER®
Specialized Studio Equipment

PROJECT
PMX2000
EUROPOWER
LED/FX SECTION
SHEET 10 OF 10 SHEETS TOTAL





REVISIONS C (04/07/02)

DRAWN BHK

CHECKED

DATE 04.03. 3
16:10

BEHRINGER®
Specialized Studio Equipment

PROJECT
OUTPUT
EUROPOWER PMX2000
OUTPUT BOARD

SHEET 1 OF 1 SHEETS TOTAL