

## General Electric Co.

Model: **HE74**

Chassis:

Year: **Pre April 1941**

Power:

Circuit:

IF:

Tubes:

Bands:

### Resources

**Riders Volume 12 - GE 12-23**

**Riders Volume 12 - GE 12-39**

**Riders Volume 12 - GE 12-40**

## GENERAL ELECTRIC CO.

VOLTAGE CHART  
Model JE-810

Tubes	Plate to Gnd. Volts	Screen to Gnd. Volts	Cathode to Gnd. Volts	Plummet to Gnd. Volts
6SK7 (R.F.)	125	95	2.5	6.4
6K8	Conv. -135 Osc. -75	95	2.5	6.4
6SK7 (I.F.)	135	95	3.2	6.4
6J5C/6J5GT	0	40	0	6.4
6SQ7	0	135	1	25.5
25C6G	200	135	210	26.5
25Z6G	0	0	0	6.4
6U5	135	135	0	6.4

Line Volts—240 AC or DC—Pointer set at 500 KC on "B" band.  
No signal input.  
25Z6G Cathode Current—85 ma.  
Plummet voltages on Model JE-810 will seldom be equal to those shown. These values are in series and heater resistance varies from tube to tube.

VOLTAGE CHART  
Model JE-81

Tubes	Plate to Gnd. Volts	Screen to Gnd. Volts	Cathode to Gnd. Volts	Plummet to Gnd. Volts
6SK7 (R.F.)	125	95	2.6	6.4
6K8	Conv. -135 Osc. -75	95	2.6	6.4
6SK7 (I.F.)	135	95	3	6.4
6J5C/6J5GT	0	0	0	6.4
6SQ7	0	135	1	6.4
6Y6G	210	135	13	6.4
6Y6G	460 V.A.C. Plate to Plate	220	220	6.1
6U5	135	0	0	6.4

Line Volts—110 AC on 110-volt tap—Pointer set at 500 KC on "B" band. No signal input.  
5Y6G Cathode Current—80 ma.

VOLTAGE CHART (Models HE-740 and HE-740L)

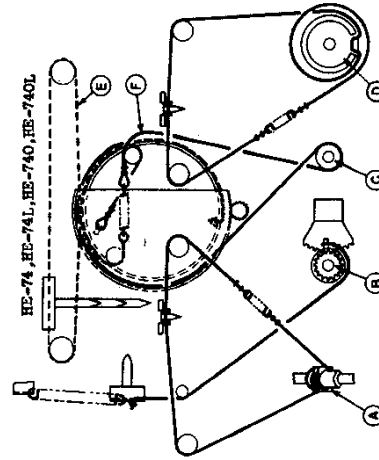
Tubes	Plate to Gnd. Volts	Screen to Gnd. Volts	Cathode to Gnd. Volts	Plummet to Gnd. Volts
6SK7	145	95	2.9	6.1
6K8	Conv. -135 Osc. -135	95	2.9	6.1
6SK7	145	95	3.3	6.6
6SQ7	78	145	1.0	26.6
25C6G	210	145	13	26.5
25Z6G	145	145	220	26.5
6U5	145	145	1.0	6.3

Line Volts—240 AC or DC—Pointer set at 500 K.C. on "B" band.  
25Z6G Cathode Current—100 ma.

VOLTAGE CHART (Model HE-74 and HE-74L)

Tubes	Plate to Gnd. Volts	Screen to Gnd. Volts	Cathode to Gnd. Volts	Plummet to Gnd. Volts
6SK7	135	90	3	6.5
6K8	Conv. -135 Osc. -75	90	3	6.5
6SK7	135	90	3	6.5
6SQ7	70	135	1.0	26.5
6Y6G	190	135	13.5	6.5
5Y6G	460 V.A.C. Plate to Plate	210	210	6.1
6U5	135	0	0	6.5

Line Volts—110 AC on 110-volt tap—Pointer set at 500 KC on "B" band. No signal input.  
5Y6G Cathode Current—80 ma.



Dial Drive Mechanism

MODELS FE-82, FE-87, FE-88

Tube No.	Plate to Gnd. Volts D-C	Screen Grid to Gnd. Volts D-C	Cathode to Gnd. Volts D-C	Cathode Current M.A.	Heater Volts A-C
6K7 R.F. Amplifier	232	97	0	7.5	6.3
6A8 Converter	180	...	0	10.6	6.3
6K7 1st I.F. Amp.	232	97	0	"A" & "B" band 6 "D" band 3	6.3
6K7 2nd I.F. Amp.	245	95	3.58	5.7	6.3
6F5 Audio Amplifier	110*	...	1.3	24	6.3
42 Output	236	202	16	39.0	6.3
80 Power Rectifier	342/684 Rms.	345	75	...	5.0

A-C line voltage 115 on primary 115-volt tap. No signal input. 1000 ohms per volt meter. Dial pointer at 530 kc.  
\* Measured on 500-volt scale.

MODELS FE-112, FE-116, FE-119

Tube No.	Plate to Gnd. Volts DC	Screen Grid to Gnd. Volts DC	Cathode to Gnd. Volts DC	Cathode Current M.A.	Heater Volts A-C
6K7 R.F. Amplifier	230	95	0	7.1	6.5
6J5-G Oscillator	195	...	0	11.0	6.5
6L7 Converter	235	90	0	7.7	6.5
6K7 1st I.F. Amp.	230	95	0	6.7	6.5
6K7 2nd I.F. Amp.	205	95	3.3	8.6	6.5
6F5 Audio Amp.	170	...	1.5	0.5	6.5
6L6-G Output	300	240	14.0	59.0	6.5
015 Tuning Indicator	...	195 (Target)	0	4.0	6.5
523 Power Rectifier	345 A.C.	368	110	...	5.1

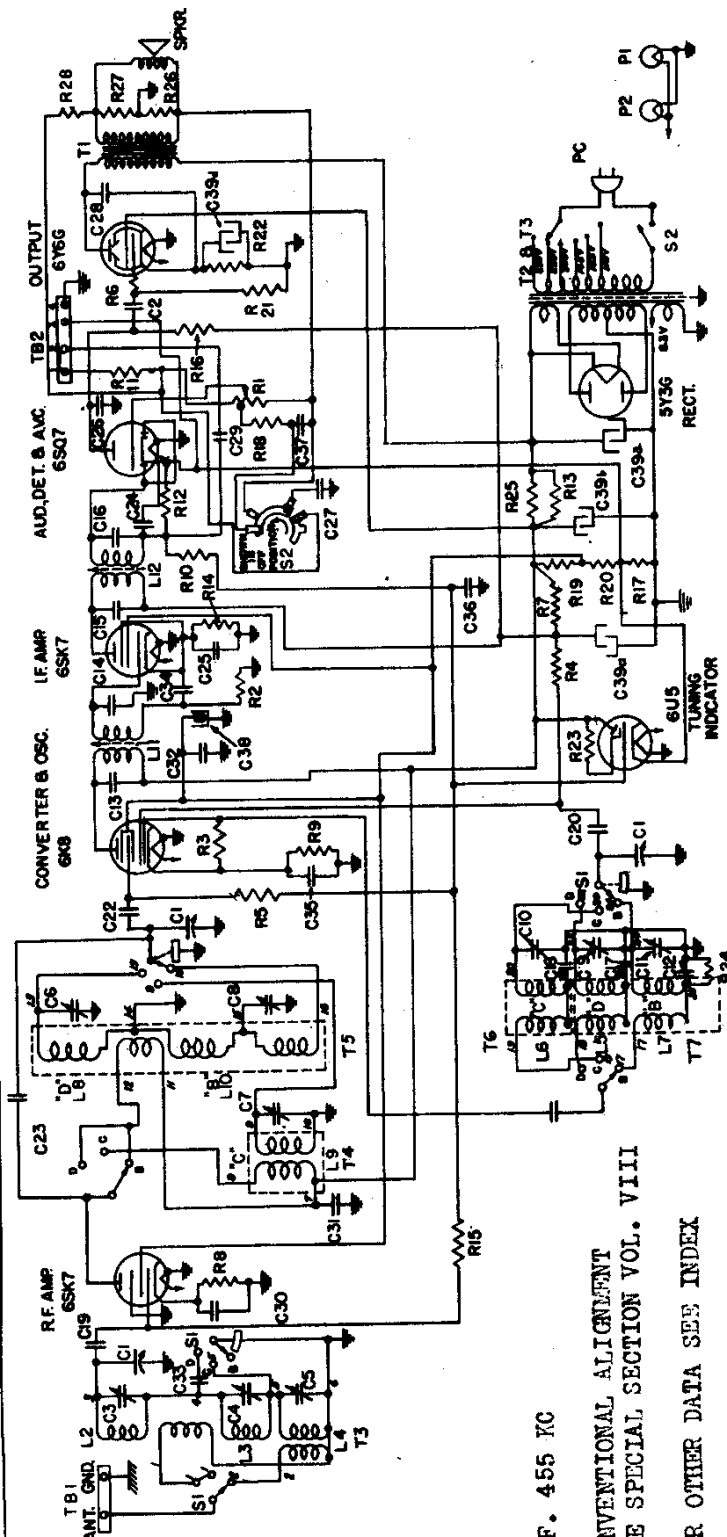
A-C line voltage 125 volts on primary 125-volt tap. "D" band. No signal.  
1000 ohms per-voltmeter. Dial pointer 5300 kc. on "D" band.

MODELS FE-82, FE-87, FE-88

Tube No.	Plate to Gnd. Volts D-C	Screen Grid to Gnd. Volts D-C	Cathode to Gnd. Volts D-C	Cathode Current M.A.	Heater Volts A-C
6A7 Oscillator	175	...	0	...	6.5
6A7 Converter	238	95	0	10.4	6.5
6K7 I.F. Amplifier	220	105	0	10.8	6.5
6H6 Det. and AVC	...	...	-3.4	...	6.5
6F5 Audio Amplifier	98*	...	1.3	0.2	6.5
42 Output	233	273	16.7	39.3	6.5
80 Power Rectifier	680/340 R.M.S.	...	340 D-C	68.3	5.0

A-C line voltage 120—No signal input—1000 ohms per volt meter—dial pointer at 540 K.C.  
\* Measured on 500-volt scale.

## GENERAL ELECTRIC CO.

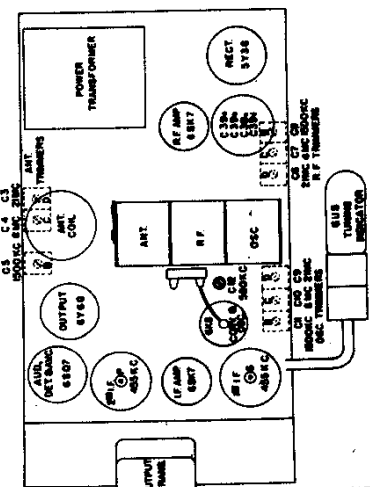


I.F. 455 KC

CONVENTIONAL ALIGNMENT  
SEE SPECIAL SECTION VOL. VIII

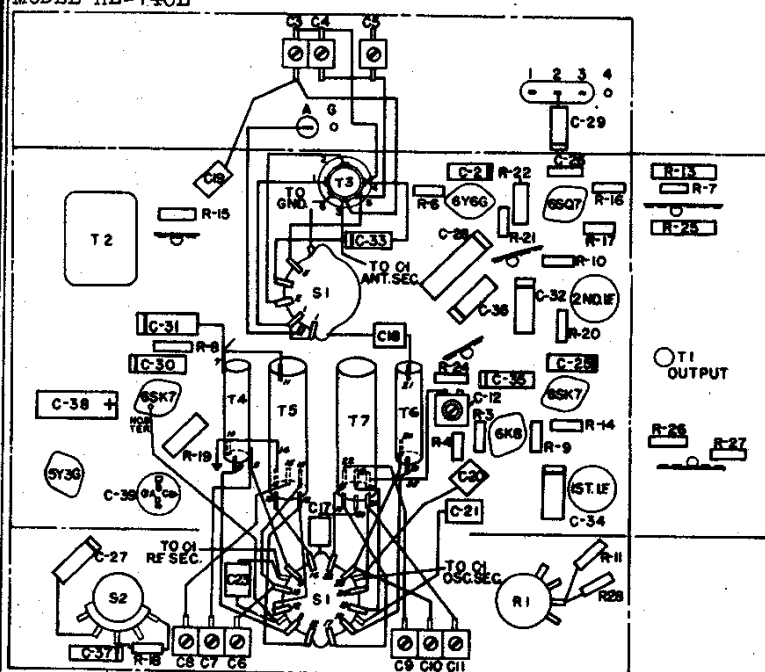
FOR OTHER DATA SEE INDEX

Symbol	Description	Symbol	Description	Symbol	Description
C1	450 Mmf. Tuning Condenser	C28	.03 Mfd. 1500 V. Paper	R7	1,000 Ohms, 1/4-w. Carbon
C2	.05 Mfd. 600 V. Paper	C29	.002 Mfd. 200 V. Paper	R8	560 Ohms, 1/4-w. Carbon
C3	3-40 Mmf. "D" Ant. Trimmer	C30	.05 Mfd. 200 V. Paper	R9	220 Ohms, 1/4-w. Carbon
C4	3-30 Mmf. "B" Ant. Trimmer	C31	.05 Mfd. 600 V. Paper	R10	2.2 Megohms, 1/4-w. Carbon
C5	2-20 Mmf. "C" Ant. Trimmer	C32	.05 Mfd. 600 V. Paper	R11	47,000 Ohms, 1/4-w. Carbon
C6	3-30 Mmf. "D" R.F. Trimmer	C33	.006 Mfd. 600 V. Paper	R12	330,000 Ohms, 1/4-w. Carbon
C7	3-30 Mmf. "C" R.F. Trimmer	C34	.05 Mfd. 200 V. Paper	R13	3,900 Ohms, 1/4-w. Carbon
C8	3-30 Mmf. "B" R.F. Trimmer	C35	.05 Mfd. 200 V. Paper	R14	560 Ohms, 1/4-w. Carbon
C9	3-30 Mmf. "D" Osc. Trimmer	C36	.05 Mfd. 200 V. Paper	R15	560 Ohms, 1/4-w. Carbon
C10	3-30 Mmf. "C" Osc. Trimmer	C37	.05 Mfd. 200 V. Paper	R16	330,000 Ohms, 1/4-w. Carbon
C11	6-40 Mmf. "B" Osc. Trimmer	C38	8 Mfd. 950 V. Dry Elec.	R17	150 Ohms, 1/4-w. Carbon
C12	300-400 Mmf. "B" Osc. Padder	C39a	40 Mfd. 350 V. Dry Elec.	R18	220,000 Ohms, 1/4-w. Carbon
C13	100 Mmf. Mica	C39b	20 Mfd. 300 V. Dry Elec.	R19	2,700 Ohms, 1/4-w. Carbon
C14	1800 Mmf. Mica	C39c	20 Mfd. 25 V. Dry Elec.	R20	15,000 Ohms, 1/4-w. Carbon
C15	470 Mmf. Mica	C39d	20 Mfd. 300 V. Dry Elec.	R21	470,000 Ohms, 1/4-w. Carbon
C16	470 Mmf. Mica	P1	Pilot Light, Mazda No. 44	R22	220 Ohms, 1/4-w. Carbon
C17	10 Mmf. Mica	R23	1.0 Megohms, 1/4-w. Carbon	R24	5,600 Ohms, 1/4-w. Carbon
C18	470 Mmf. Mica	R25	2.0 Megohms Volume Control	R26	3,900 Ohms, 1/4-w. Carbon
C19	10 Mmf. Mica	R27	330,000 Ohms, 1/4-w. Carbon	R28	22 Ohms, 1/4-w. Carbon
C20	100 Mmf. Mica	R29	15,000 Ohms, 1/4-w. Carbon		
C21	.04 Mfd. 600 V.	R30	560,000 Ohms, 1/4-w. Carbon		
C22	220 Mmf. Mica	R31	1,000 Ohms, 1/4-w. Carbon		
C23	.00075 Mfd. 600 V. Paper	R32			
C24					
C25					
C26					
C27					

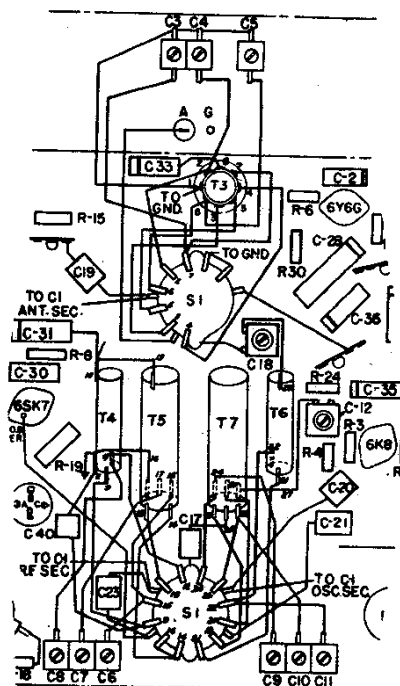


MODEL HE-74  
MODEL HE-74L  
MODEL HE-740  
MODEL HE-740L

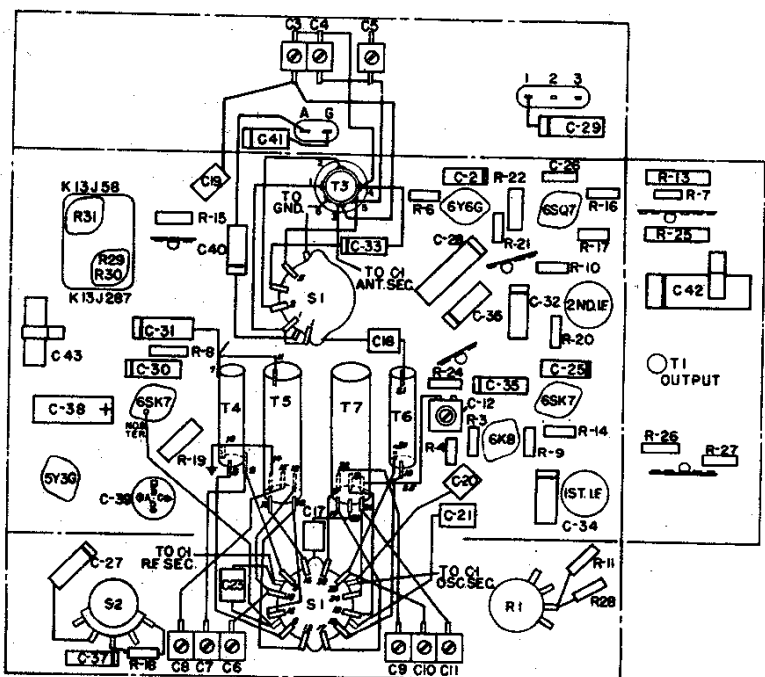
# GENERAL ELECTRIC CO.



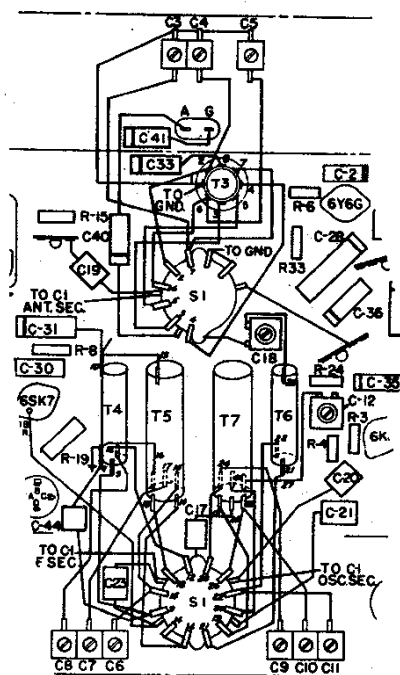
CHASSIS PARTS LAYOUT  
MODEL HE-74



CHASSIS PARTS LAYOUT  
(PARTIAL)  
MODEL HE-74L  
BALANCE SAME AS HE-74



CHASSIS PARTS LAYOUT  
MODEL HE-740



CHASSIS PARTS LAYOUT  
(PARTIAL)  
MODEL HE-740L  
BALANCE SAME AS HE740