

Service
Service
Service



Service Manual



TABLE OF CONTENTS

	Page
Service AIDS & CD playability	1
Specifications	2
Connection & Controls	3
Disassembly Instructions	4
Block & Wiring diagrams	5
RADIO BOARD	6
AMP & POWER BOARD	7
MCU BOARD	8
CASS BOARD	9
CD BOARD	10
EXPLODE DIAGRAM	11
SERVICE PARTLIST	12
VERSION LIST	13

© Copyright 2007 Philips Consumer Electronics B.V. Eindhoven, The Netherlands
All rights reserved. No part of this publication may be reproduced, stored in a retrieval system or transmitted, in any form or by any means, electronic, mechanical, photocopying, or otherwise without the prior permission of Philips.

Published by DB Service Audio Printed in The Netherlands Subject to modification



SERVICE AIDS

Service Tools:

Universal Torx driver holder	4822 395 91019
Torx bit T10 150mm	4822 395 50456
Torx driver set T6-T20	4822 395 50145
Torx driver T10 extended	4822 395 50423

Compact Disc:

SBC426/426A Test disc 5 + 5A	4822 397 30096
SBC442 Audio Burn-in test disc 1kHz	4822 397 30155
SBC429 Audio Signals disc	4822 397 30184
Dolby Pro-logic Test Disc	4822 395 10216



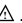
WARNING

All ICs and many other semi-conductors are susceptible to electrostatic discharges (ESD). Careless handling during repair can reduce life drastically.
When repairing, make sure that you are connected with the same potential as the mass of the set via a wrist wrap with resistance. Keep components and tools also at this potential.

ESD



Safety regulations require that the set be restored to its original condition and that parts which are identical with those specified, be used

Safety components are marked by the symbol .

**CLASS 1
LASER PRODUCT**

INFORMATION ABOUT LEAD-FREE SOLDERING

Philips CE is producing lead-free sets from 1.1.2005 onwards.

IDENTIFICATION:

Regardless of special logo (not always indicated) one must treat all sets from 1 Jan 2005 onwards, according next rules:



- On our website www.atyourservice.ce.Philips.com you find more information to:
 - * BGA-de-/soldering (+ baking instructions)
 - * Heating-profiles of BGAs and other ICs used in Philips-sets
 - * Lead free

You will find this and more technical information within the "magazine", chapter "workshop news".

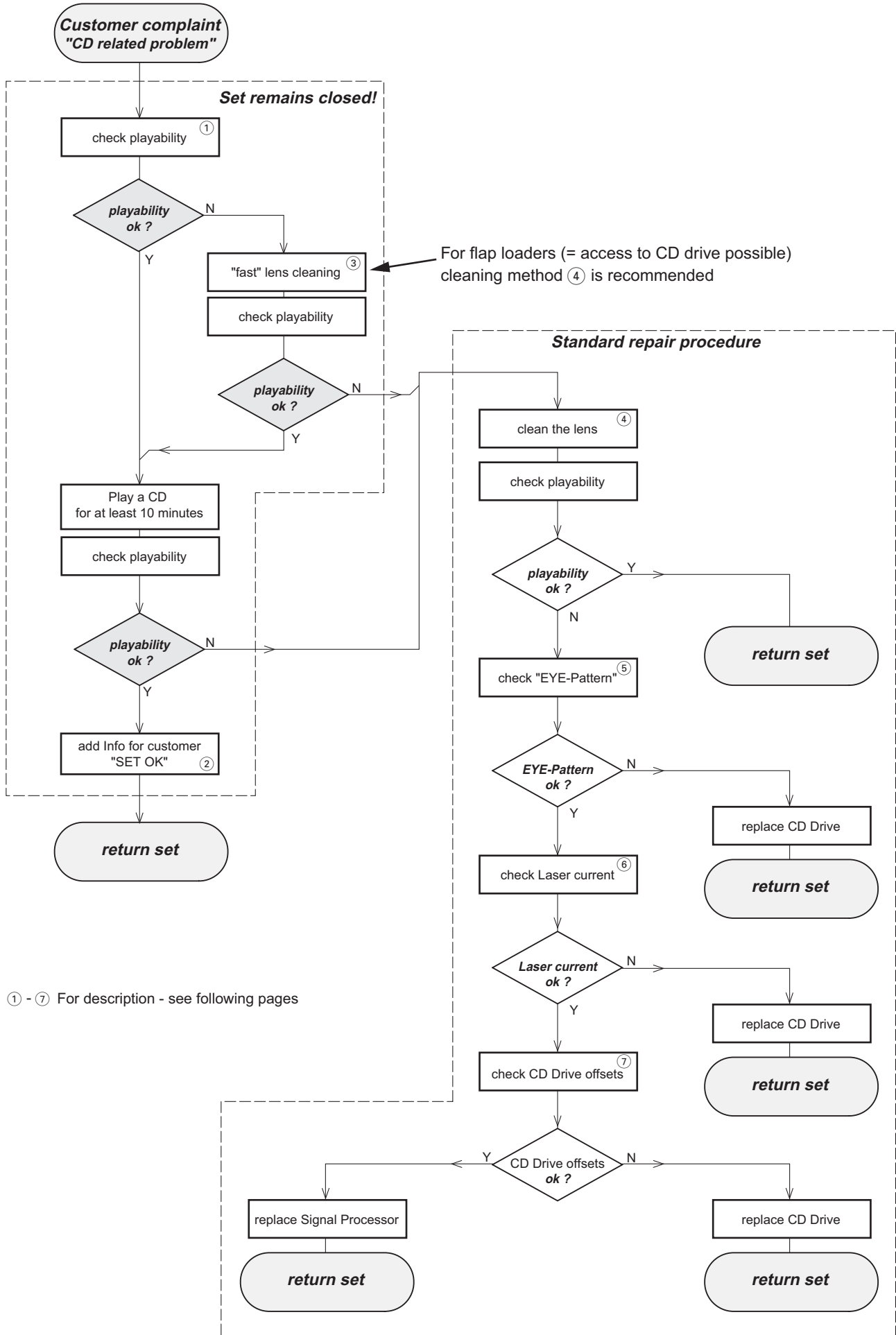
For additional questions please contact your local repair-helpdesk.

SERVICE INSTRUCTION

Safety regulations require that after a repair, the set must be returned in its original condition. Pay in particular attention to the following points:

- Route the wire trees correctly and fix them with the mounted cable clamps.
- Check the insulation of the AC Power lead for external damage.
- Check the strain relief of the AC Power cord for proper function.
- Check the electrical DC resistance between the AC Power Plug and the secondary side (only for sets which have a AC Power isolated power supply):
 1. Unplug the AC Power cord and connect a wire between the two pins of the AC Power plug.
 2. Set the AC Power switch to the "on" position (keep the AC Power cord unplugged!).
 3. Measure the resistance value between the pins of the AC Power plug and the metal shielding of the tuner or the aerial connection on the set. The reading should be larger than 4.5 Mohm (For U.S. it should be between 4.2 Mohm and 12 Mohm).
 4. Switch "off" the set, and remove the wire between the two pins of the AC Power plug.
- Check the cabinet for defects, to avoid touching of any inner parts by the customer.

CD PLAYABILITY CHECK



CD PLAYABILITY CHECK

①

PLAYABILITY CHECK

For sets which are compatible with **CD-RW** discs
 use CD-RW Printed Audio Disc.....7104 099 96611
 TR 3 (Fingerprint)
 TR 8 (600µ Black dot) **maximum at 01:00**

- playback of these two tracks without audible disturbance
 playing time for: Fingerprint ≥ 10 seconds
 Black dot from 00:50 to 01:10
- jump forward/backward (search) within a reasonable time

For all other sets
 use CD-DA SBC 444A.....4822 397 30245
 TR 14 (600µ Black dot) **maximum at 01:15**
 TR 19 (Fingerprint)
 TR 10 (1000µ wedge)

- playback of all these tracks without audible disturbance
 playing time for: 1000µ wedge ≥ 10 seconds
 Fingerprint ≥ 10 seconds
 Black dot from 01:05 to 01:25
- jump forward/backward (search) within a reasonable time

②

CUSTOMER INFORMATION

It is proposed to add an addendum sheet to the set which informs the customer that the set has been checked carefully - but no fault was found.

The problem was obviously caused by a scratched, dirty or copy-protected CD. In case problems remain, the customer is requested to contact the workshop directly.

The lens cleaning (method ③) should be mentioned in the addendum sheet.

The final wording in national language as well as the printing is under responsibility of the Regional Service Organizations.

③

FAST LENS CLEANING (dry brush)

Use lens cleaning CD
 SBC AC300.....9082 100 00043

Insert the lens cleaning CD, press PLAY and follow the voice guide's instructions on the CD.

④

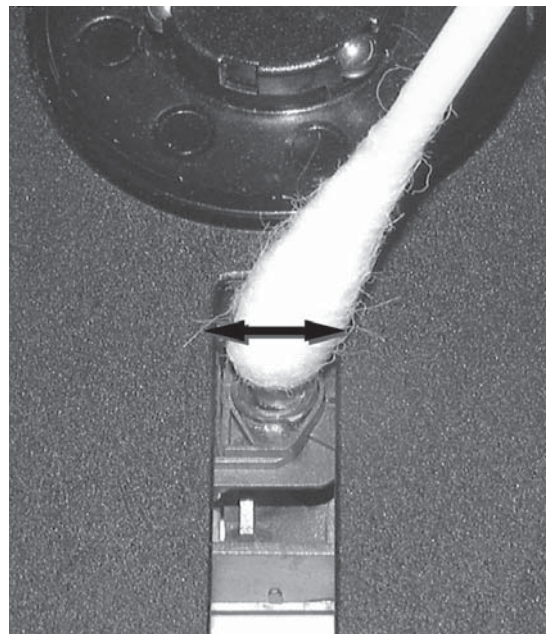
LIQUID LENS CLEANING

Before touching the lens it is advised to clean the surface of the lens by blowing clean air over it. This to avoid that little particles make scratches on the lens.

Because the material of the lens is synthetic and coated with a special anti-reflectivity layer, cleaning must be done with a non-aggressive cleaning fluid. It is advised to use "Cleaning Solvent B4-No2", available with codenumber 4822 389 10026.

The actuator is a very precise mechanical component and may not be damaged in order to guarantee its full function. Clean the lens gently (don't press too hard) with a soft and clean cotton bud moistened with the special lens cleaner.

The direction of cleaning must be in the way as indicated in the picture below.

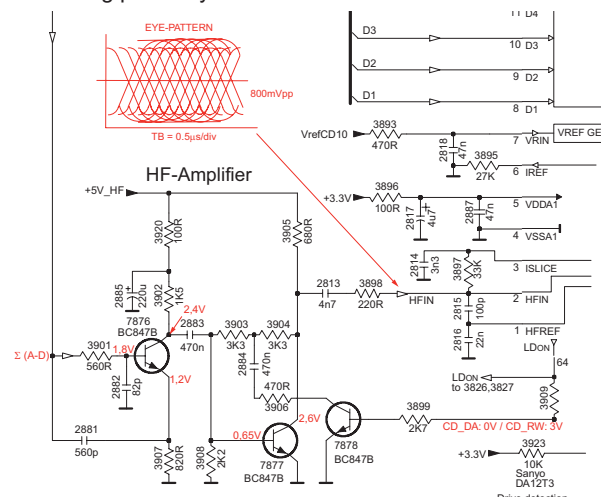


CD PLAYABILITY CHECK

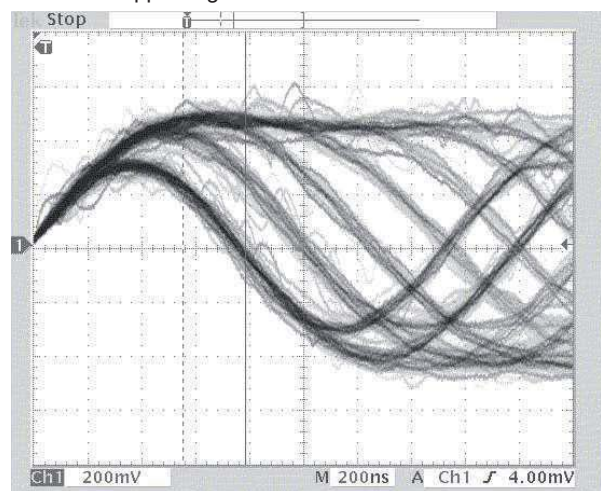
⑤

EYE-PATTERN SIGNAL – JITTER MEASUREMENT

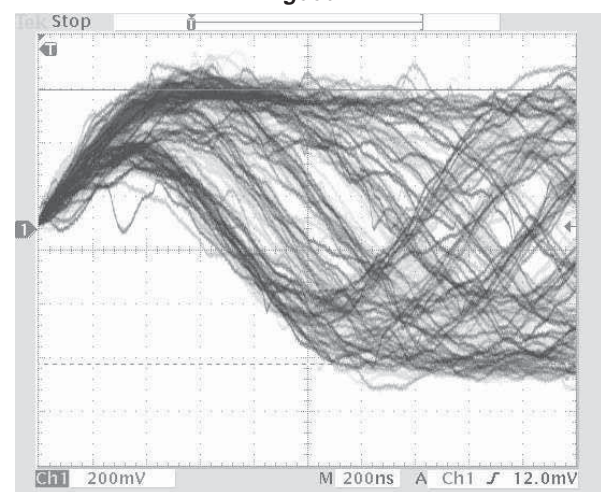
Measure the signal on the input of the Signal processor using an **analog** oscilloscope. Please find the exact measuring point in your Service Manual.



See below examples of the signal. Amplitude should read at least 700mVpp using SBC444A.



good



bad

If the oscilloscope shows a signal like the 'bad' one, and/or the amplitude decreases within 1 minute - the CD drive has to be replaced.

⑥

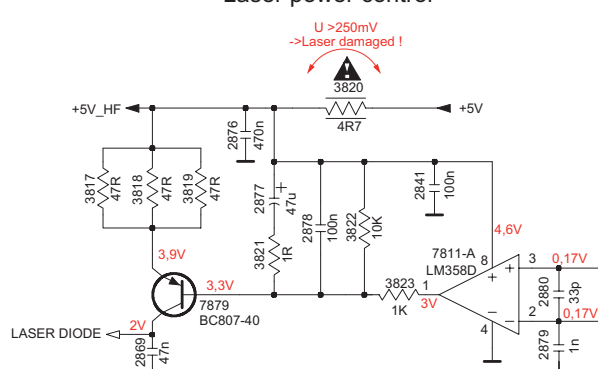
CD DRIVE – LASER CURRENT MEASUREMENT

The laser current can be measured as a voltage drop on a resistor. The resistor is marked in every Service Manual. The value depends on the type of CD drive.

	typical value	most probably defect
VAMxxxx	: 150-230mV	≥350mV
MCDxx	: 170-230mV	≥300mV
DA1x	: 210-250mV	≥350mV
DA2x	: 175-200mV	≥250mV

Use SBC444A (CD-DA) for measurement.

Laser power control



⑦

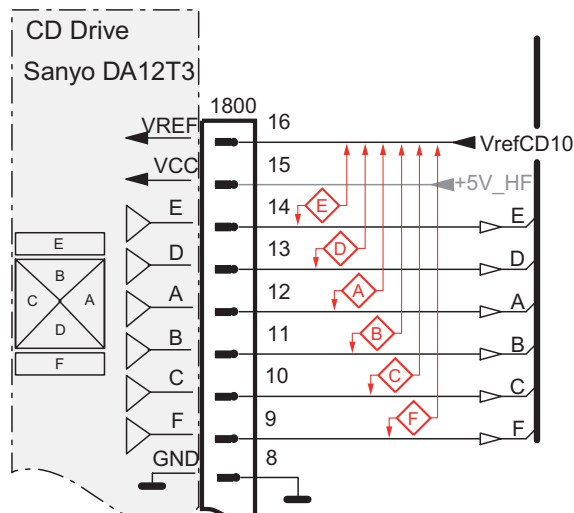
CD DRIVE – OFFSET MEASUREMENT

The photodiodes of the CD-drive may have an offset. These offsets have to be compensated by the signal processor. High offsets can lead to poor playability of some CDs (skipping tracks).

To measure the offset values, start the **Service Test Program** - section "Focus Test" without a CD.

The offsets can be measured with a DC Millivoltmeter directly on the connector (see drawing below). Pin numbering varies from drive to drive.

The values from diode A-D should read $0 \pm 10\text{mV}$. Diodes E and F are less critical.



If one of the offsets is higher than $\pm 10\text{mV}$ the CD drive has to be replaced. Otherwise replace the Signal Processor.

TECHNICAL SPECIFICATIONS

AMPLIFIER

Output power 2 x 20 W RMS
 800W PMPO
 Signal-to-noise ratio ≥ 62 dBA (IEC)
 Frequency response 63 – 16000 Hz, ± 3 dB
 Impedance loudspeakers 8 Ω
 Impedance headphones 32 Ω – 1000 Ω

CD PLAYER

Frequency range 63 – 16000 Hz
 Signal-to-noise ratio 65 dBA

TUNER

FM wave range 87.5 – 108 MHz
 MW wave range 522 – 1710 KHz

TAPE DECK

Frequency response
 Normal tape (type I) 125 – 8000 Hz (8 dB)
 Signal-to-noise ratio
 Normal tape (type I) 35 dBA
 Wow and flutter $\leq 0.4\%$ DIN

SPEAKERS

Bass reflex system
 Dimensions (w x h x d) . 190 x 292 x 182 (mm)

GENERAL INFORMATION

AC Power 110 – 127 / 220 – 240 V
 50/60 Hz Switchable
 Dimensions (w x h x d) .. 220 x 292 x 285 (mm)
 Weight (with/without speakers)
 approx. 4.9 / 2.3 kg

Specifications and external appearance are subject to change without notice.

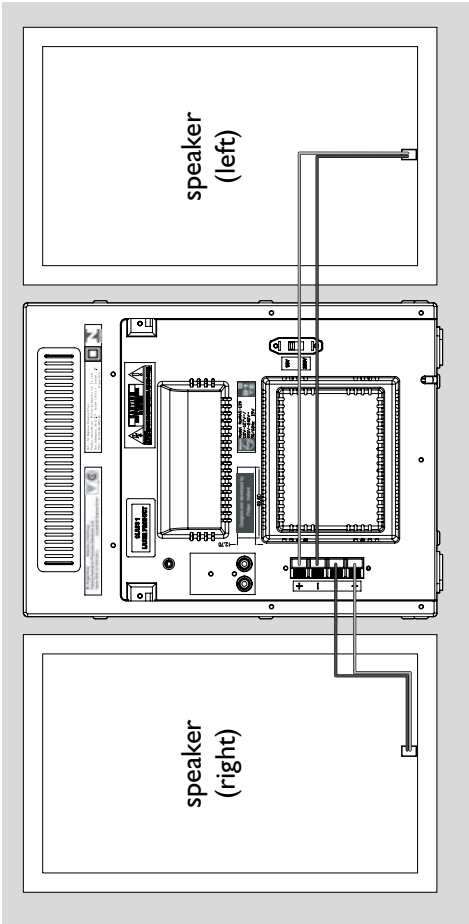
SERVICE TOOLS

Audio signal disc SBC 429.....4822 397 30184
Playability test disc SBC 444.....4822 397 30245
Test disc 5 (disc without errors) +
Test disc 5A (disc with dropout errors, black spots and fingerprints)
 SBC 426/426A.....4822 397 30096
Burn in test disc (65 min. 1kHz signal at -30 dB level without “pause”).....4822 397 30155

AVAILABLE ESD PROTECTION EQUIPMENT

anti-static table mat	large 1200x650x1.25mm	4822 466 10953
	small 600x650x1.25m	4822 466 10958
anti-static wristband		4822 395 10223
connection box (3 press stud connections, 1M Ω)		4822 320 11307
extendible cable (2m, 2M Ω , to connect wristband to connection box)		4822 320 11305
connecting cable (3m, 2M Ω , to connect table mat to connection box)		4822 320 11306
earth cable (1M Ω , to connect any product to mat or to connection box)		4822 320 11308
KIT ESD3 (combining all 6 prior products - small table mat)		4822 310 10671
wristband tester		4822 344 13999

Connections



Rear connections

The type plate is located at the back of the system.

(A) Power

- Before connecting the AC power cord to the wall outlet, ensure that all other connections have been made.
- If your system is equipped with a Voltage Selector, set the VOLTAGE SELECTOR to the local power line voltage.

WARNING!

- For optimal performance, use only the original power cable.
- Never make or change any connections with the power switched on.

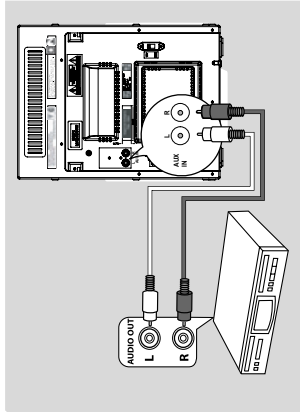
To avoid overheating of the system, a safety circuit has been built in. Therefore, your system may switch to Standby mode automatically under extreme conditions. If this happens, let the system cool down before reusing it (not available for all versions).

Connections

Optional connection

The optional equipment and connecting cords are not supplied. Refer to the operating instructions of the connected equipment for details.

Use a cinch cable to connect **AUX IN** to the analogue audio out terminals of an external equipment (TV/VCR, Laser Disc player, DVD player or CD Recorder).

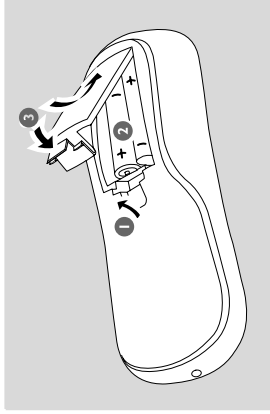


Note:

- If you are connecting equipment with a mono output (a single audio out terminal), connect it to the AUX left terminal. Alternatively, you can use a "single to double" cinch cable (the output sound still remain mono).

Inserting batteries into the remote control

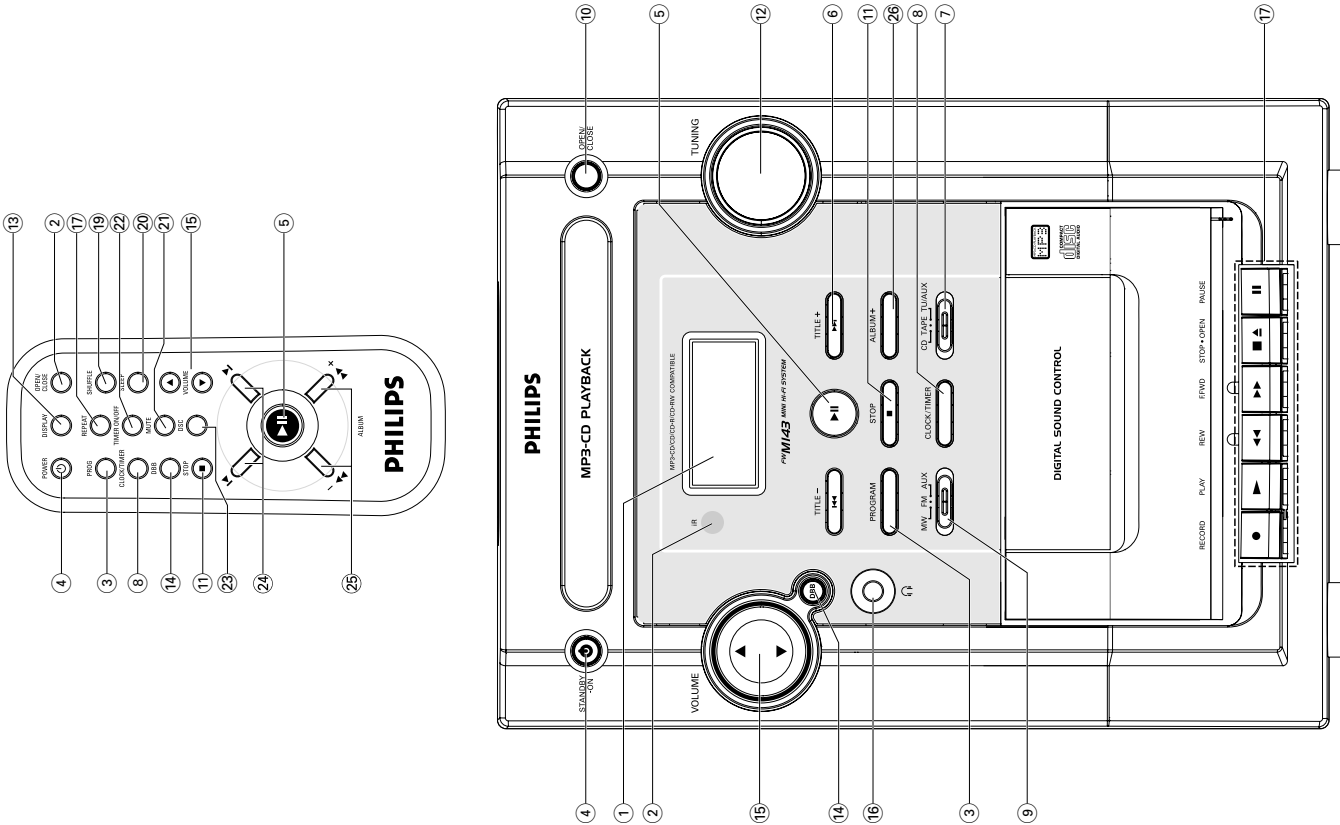
Insert two batteries type R03 or AAA into the remote control with the correct polarity as indicated by the "+" and "-" symbols inside the battery compartment.



CAUTION!

- Remove batteries if they are exhausted or will not be used for a long time.
- Do not use old and new or different types of batteries in combination.
- Batteries contain chemical substances, so they should be disposed of properly.

CONNECTION AND CONTROLS



Controls on the system and remote control

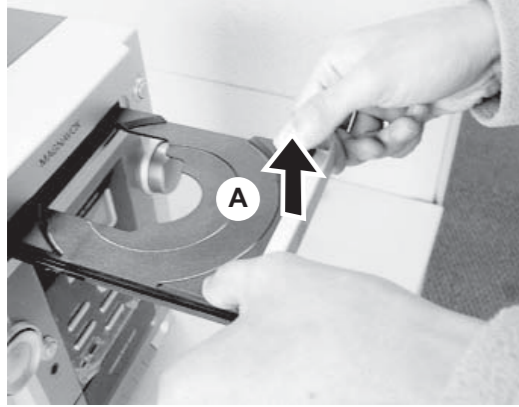
- 1 **LCD Display**
 - shows the status of the system.
- 2 **IR SENSOR**
 - infrared sensor for remote control.
- 3 **PROGRAM (PROG)**
 - for CD programs tracks and reviews the program.
- 4 **STANDBY-ON (POWER)**
 - switches the system to standby/on.
- 5 **▶II**
 - for CD/MP3 starts or pauses CD playback.
- 6 **TITLE-/▶II◀◀ / ▶▶II**
 - for CD/MP3 skips to the beginning of a current track/previous/ next track (title).
(press and hold) fast searches back and forward within a track/disc.
- 7 **Source selector (CD/TAPE/TUNER/AUX)**
 - selects the respective sound source for CD/TAPE/ TUNER/AUX.
- 8 **CLOCK/TIMER**
 - sets the clock or timer function.
- 9 **Mode selector (MW/FM/AUX)**
 - for Tuner selects waveband: MW or FM.
for AUX selects the AUX mode.
- 10 **OPEN/CLOSE**
 - open/close the CD door.
- 11 **STOP**
 - for CD/MP3 stops CD playback or erases a CD program.
- 12 **TUNING**
 - tunes to a radio station.
- 13 **DISPLAY**
 - display the current time.
- 14 **DBB** (Dynamic Bass Boost)
 - enhances the bass.
- 15 **VOLUME ▲/▼**
 - adjusts the volume level.

- 16 **connect headphones.**
- 17 **Tape Deck Operation**
 - RECORD** starts recording.
 - PLAY** starts playback.
 - REW** ◀◀ / **FFWD** ▶▶ fast rewinds/forwards the tape.
 - STOP-OPEN** ■ stops the tape; opens the tape compartment.
 - PAUSE** II pauses recording or playback.
 - REPEAT** repeats a track/CD programme/ entire CD.
 - SHUFFLE** plays CD tracks in random order.
 - SLEEP** activates/deactivates or selects the sleeper time.
 - MUTE** switches playback sound off and on.
 - TIMER ON/OFF** activates/deactivates the timer.
 - DSC (Digital Sound Control)** selects sound characteristics: CLASSIC/JAZZY/POP/ROCK.
 - ◀◀ / ▶▶ for CD/MP3 skips to the beginning of a current track/previous/next track (title).
for CD/MP3 (press and hold) fast searches back and forward within a track/CD.
 - for clock/timer adjusts the hours and minutes for clock/timer functions.
- 25 **ALBUM-/▶II◀◀**
 - for MP3 selects an album.
- 26 **ALBUM+**
 - for MP3 selects an album upward.

DISASSEMBLY DIADRAMS

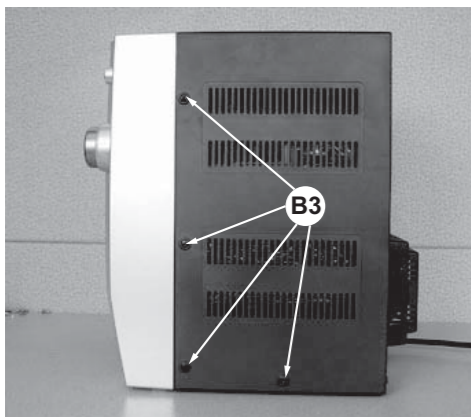
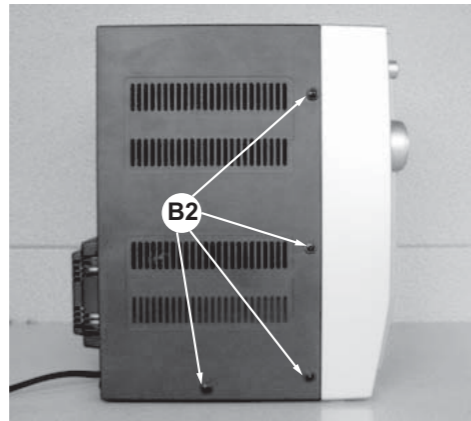
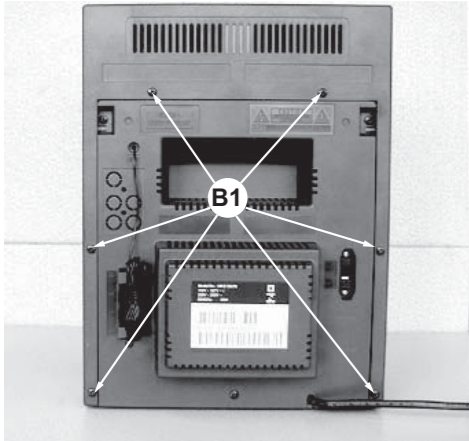
A. Remove CD Door

- Power on the unit and open the CD door.
- Remove the CD door cover. **(A)**



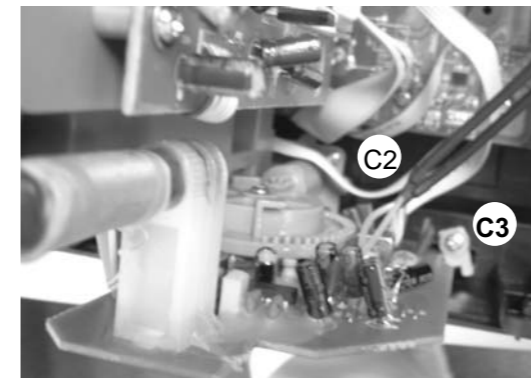
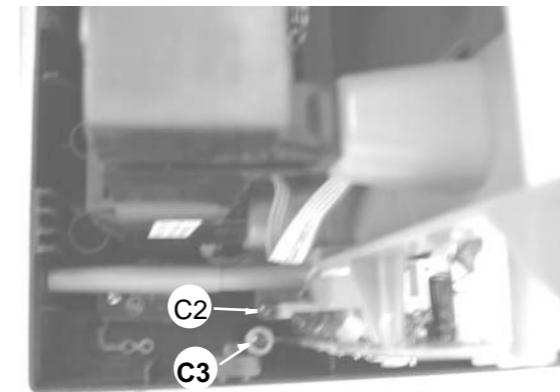
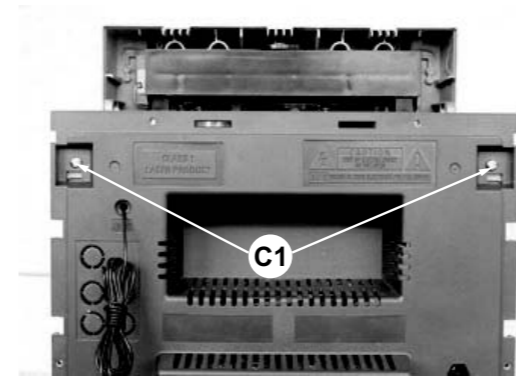
B. Remove Top Cabinet

- Remove screws MP 3x12 - 6 pcs.
- Remove screws MP 3x12 - 4 pcs.
- Remove screws MP 3x12 - 4 pcs.

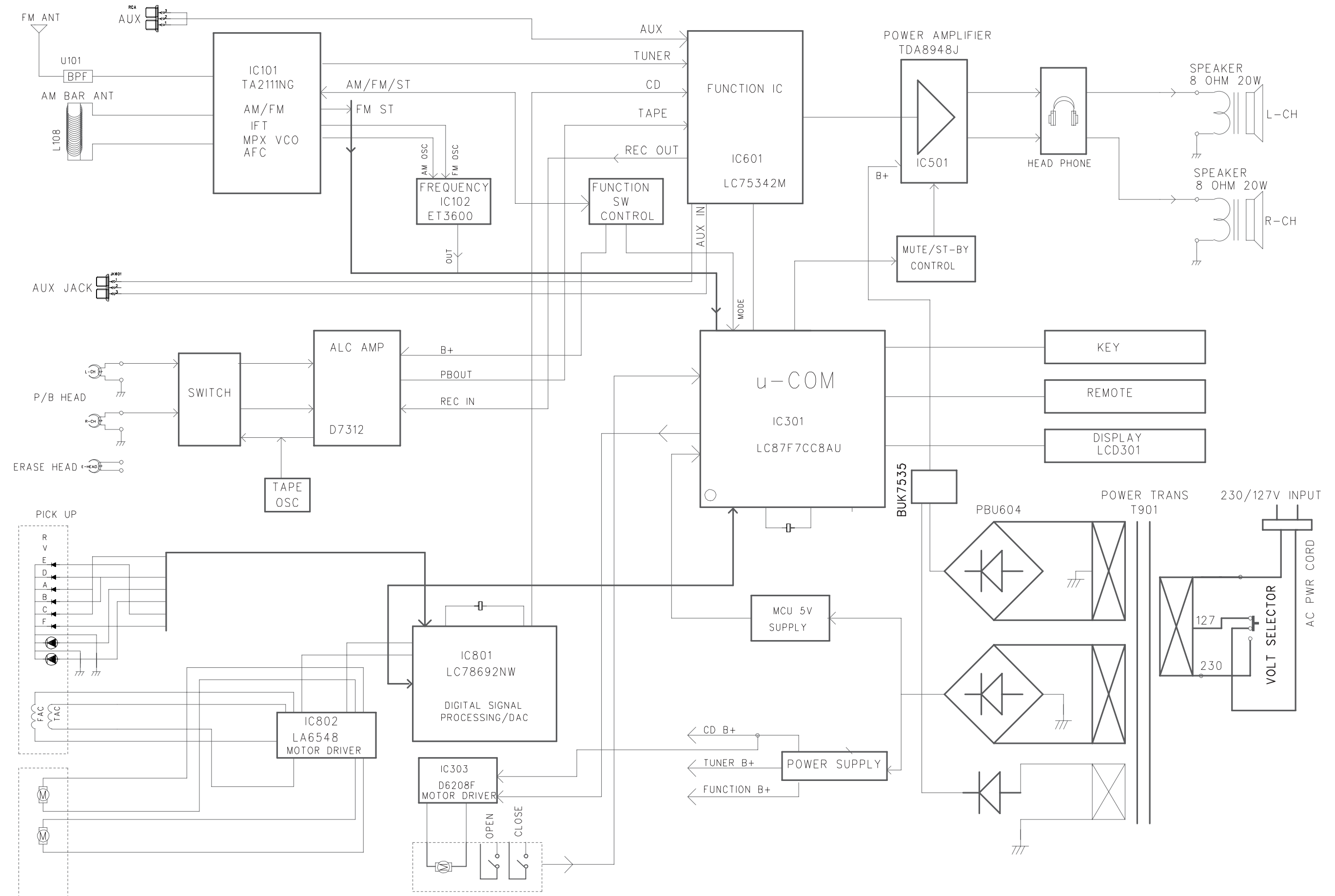


C. Remove CD Loader

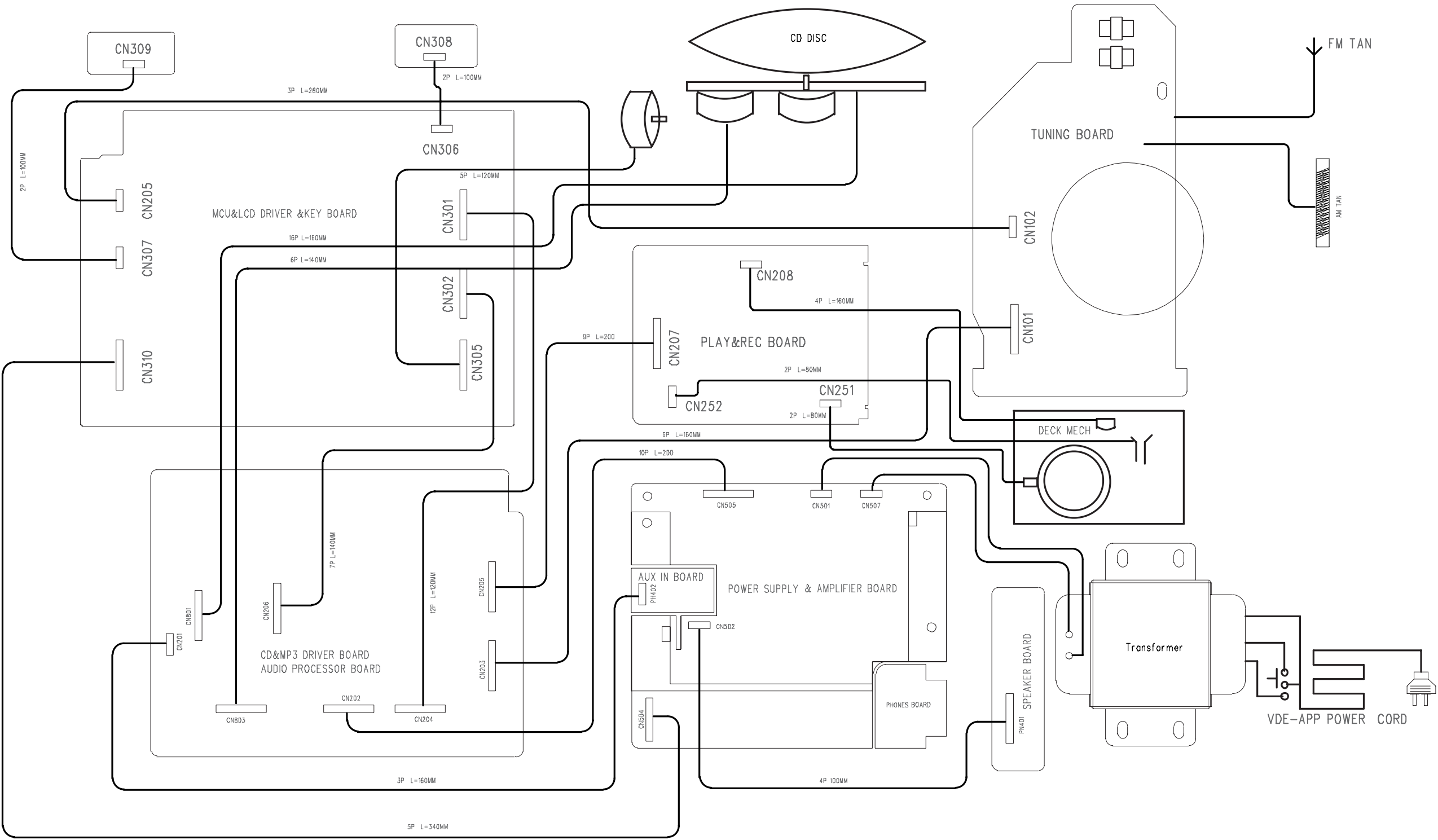
- Remove screws SP 3x8 - 2 pcs.
- Remove screws SP 3x15 - 2 pcs.
- Remove screws SP 3x10 - 1 pcs.



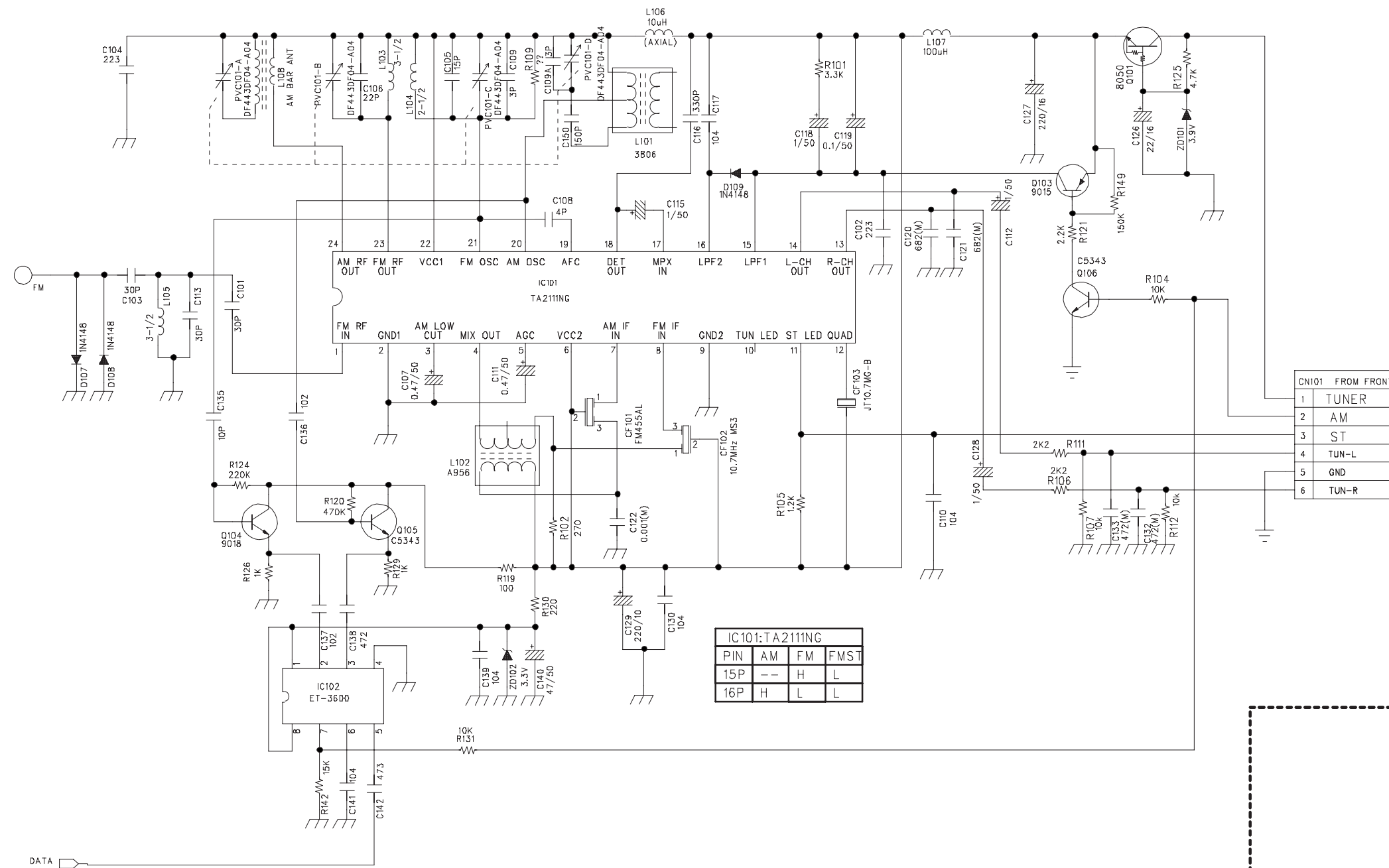
SET BLOCK DIAGRAM



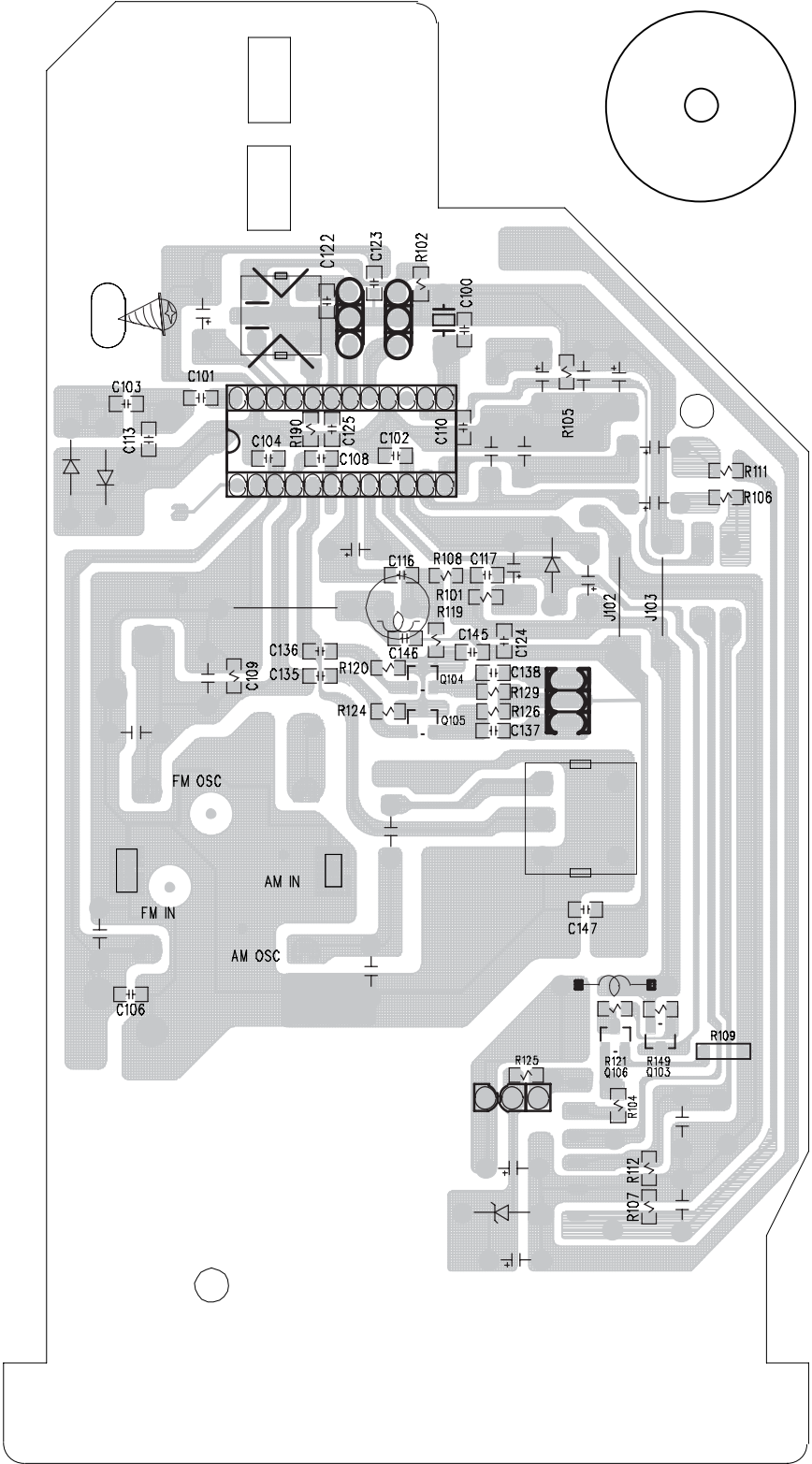
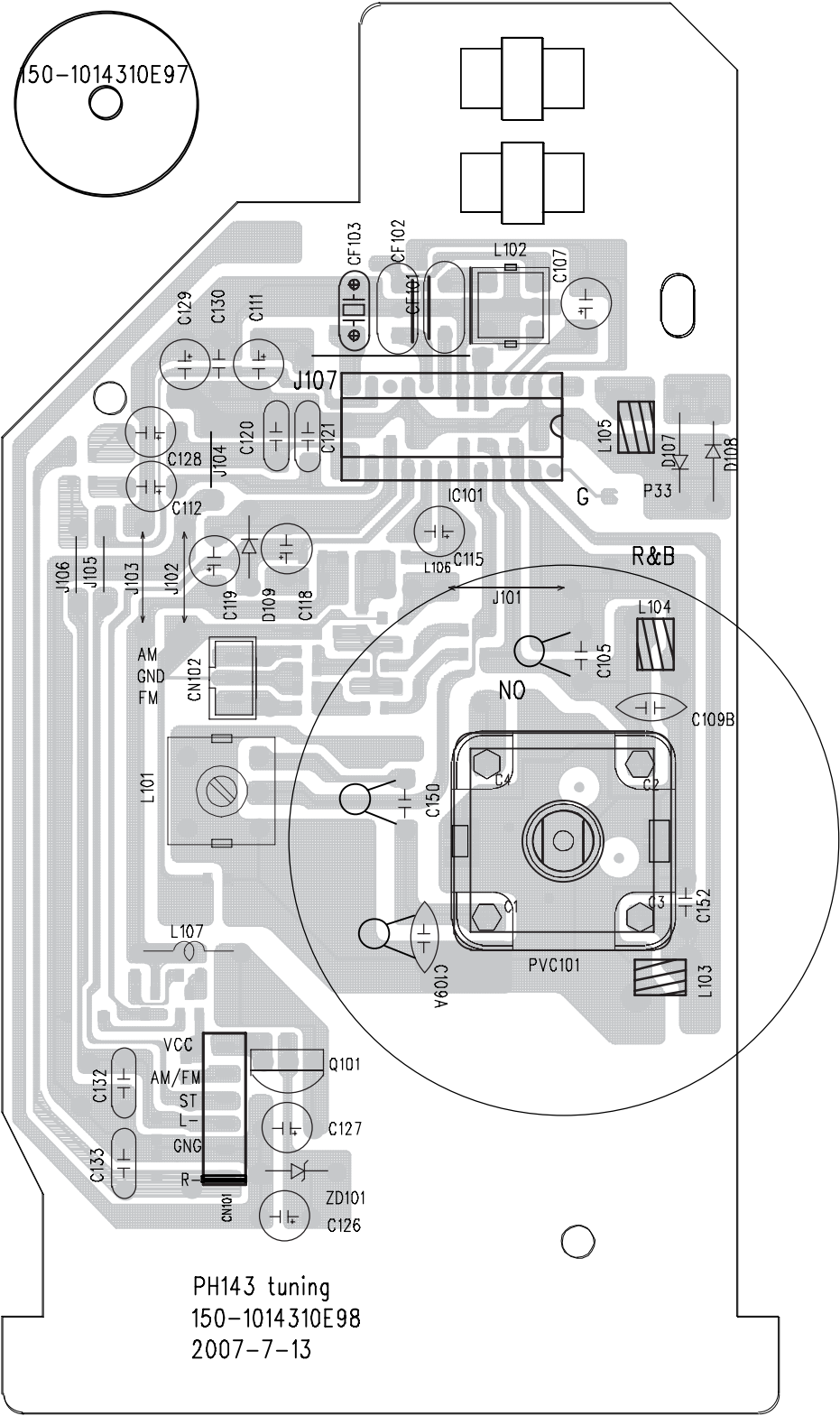
SET WRING DIAGRAM



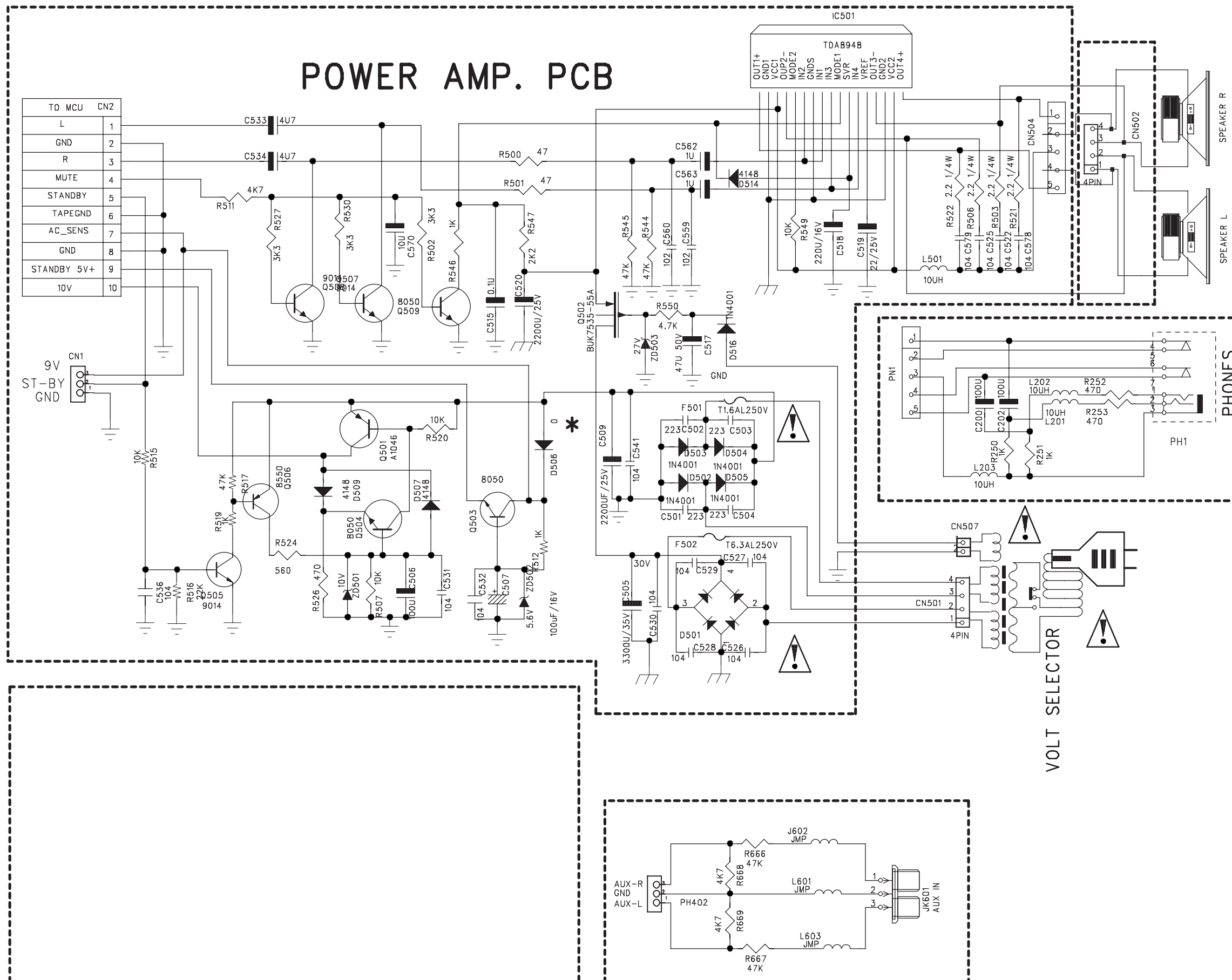
TUNER PART



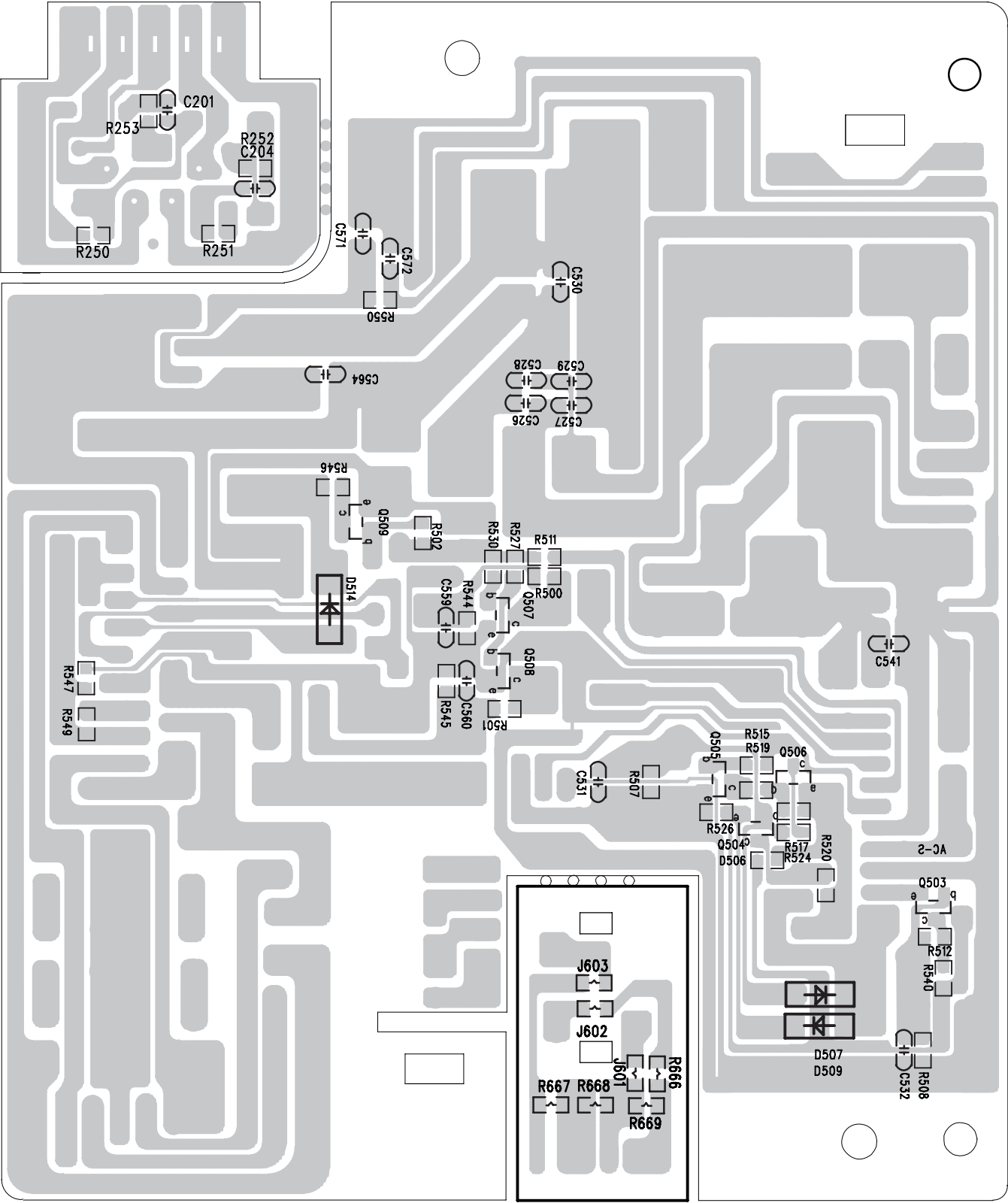
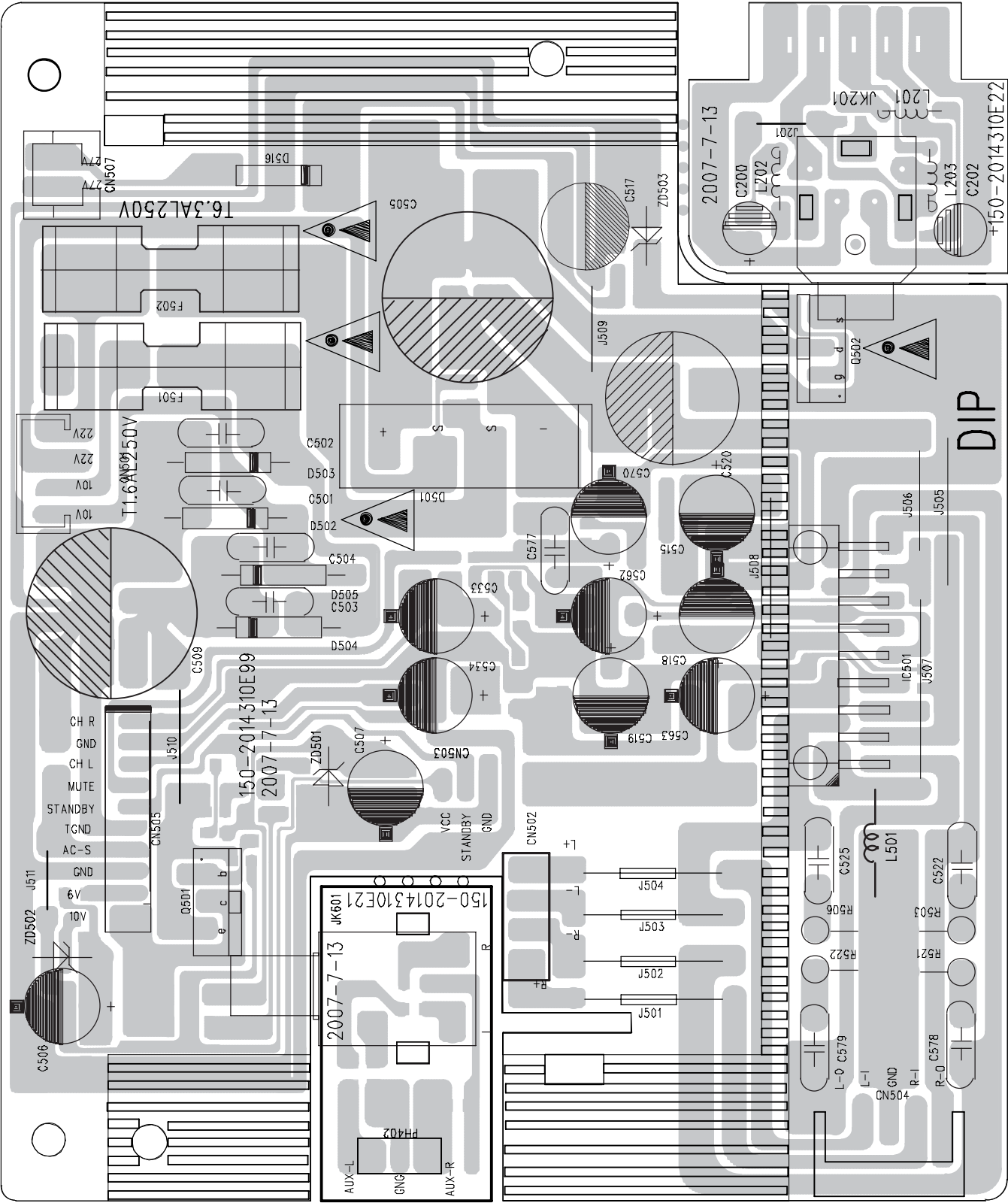
LAYOUT DIAGRAM - RADIO BOARD



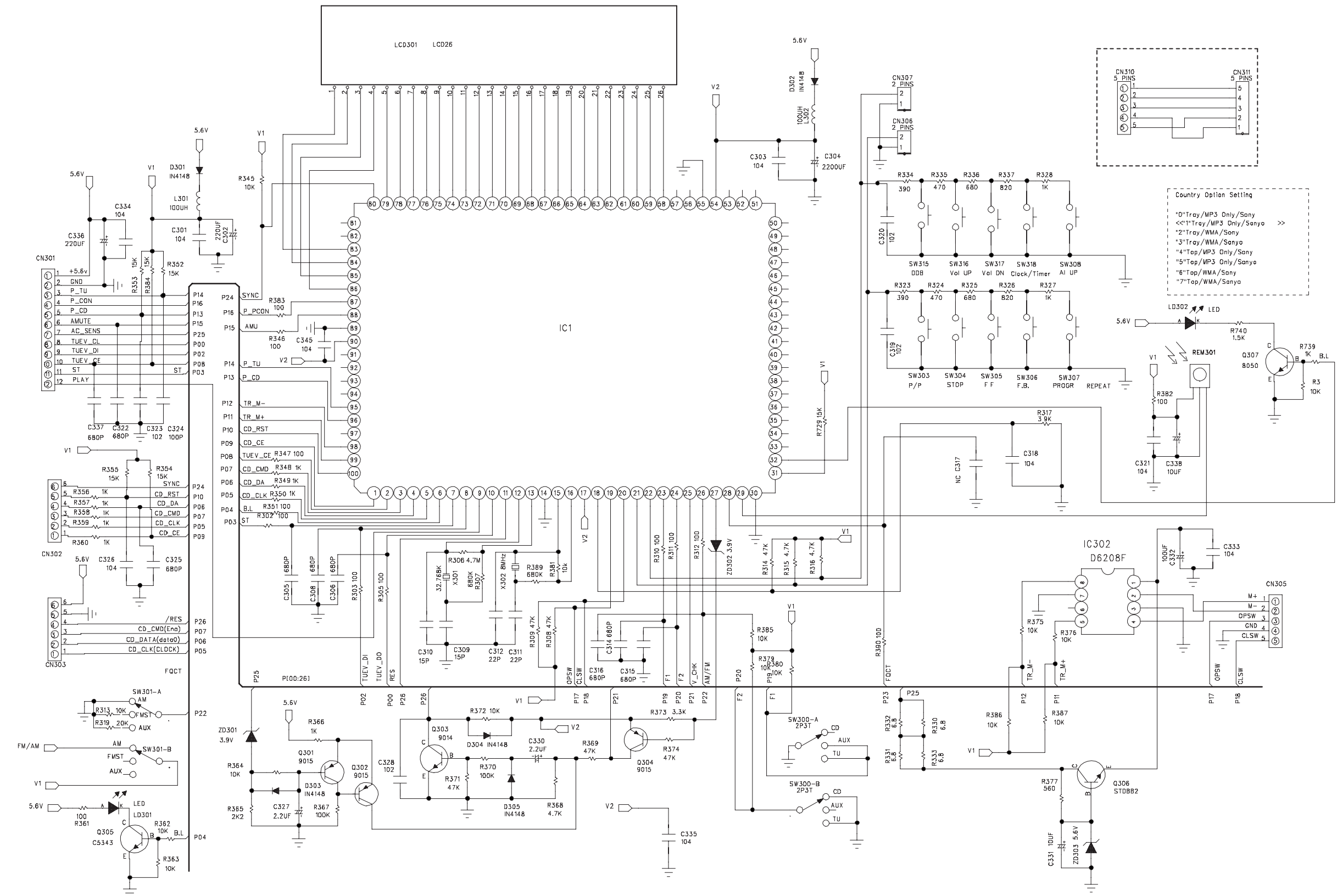
POWER AMP. PCB



LAYOUT DIAGRAM - AMP & POWER BOARD

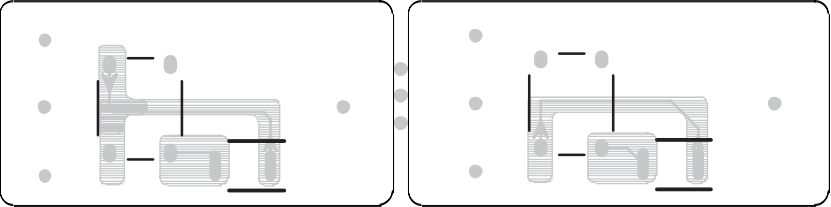
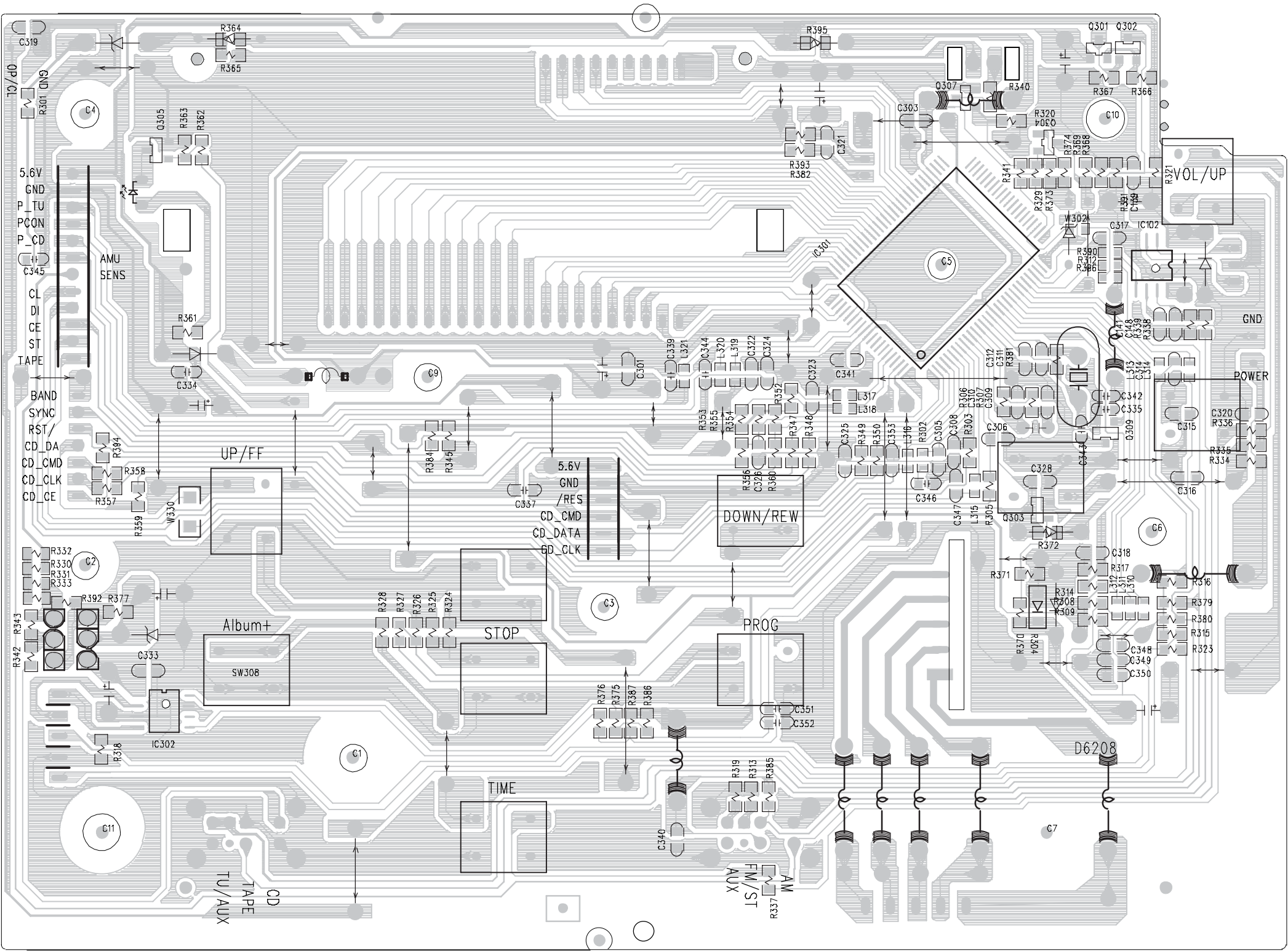


CIRCUIT DIAGRAM - MCU BOARD

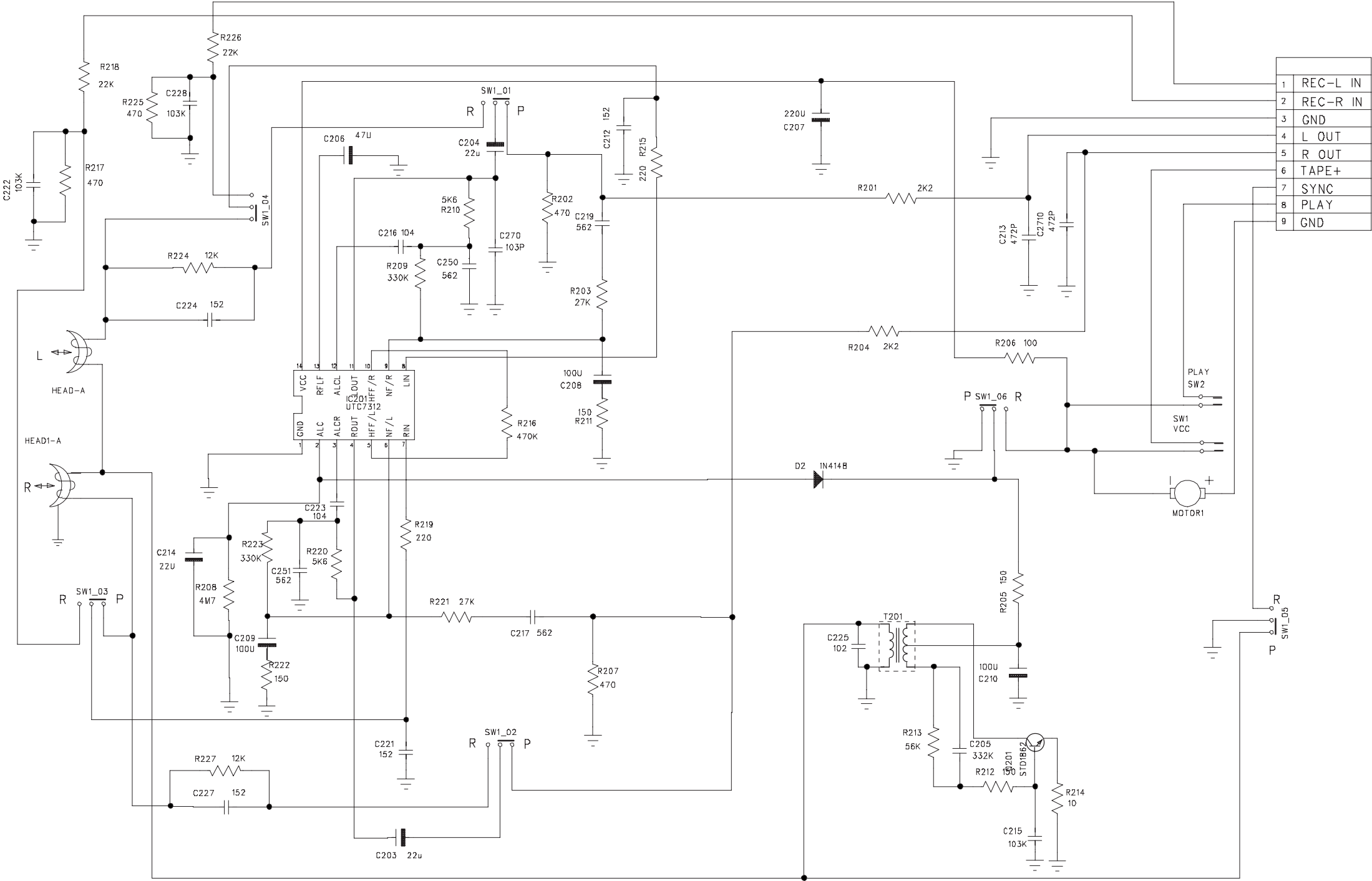




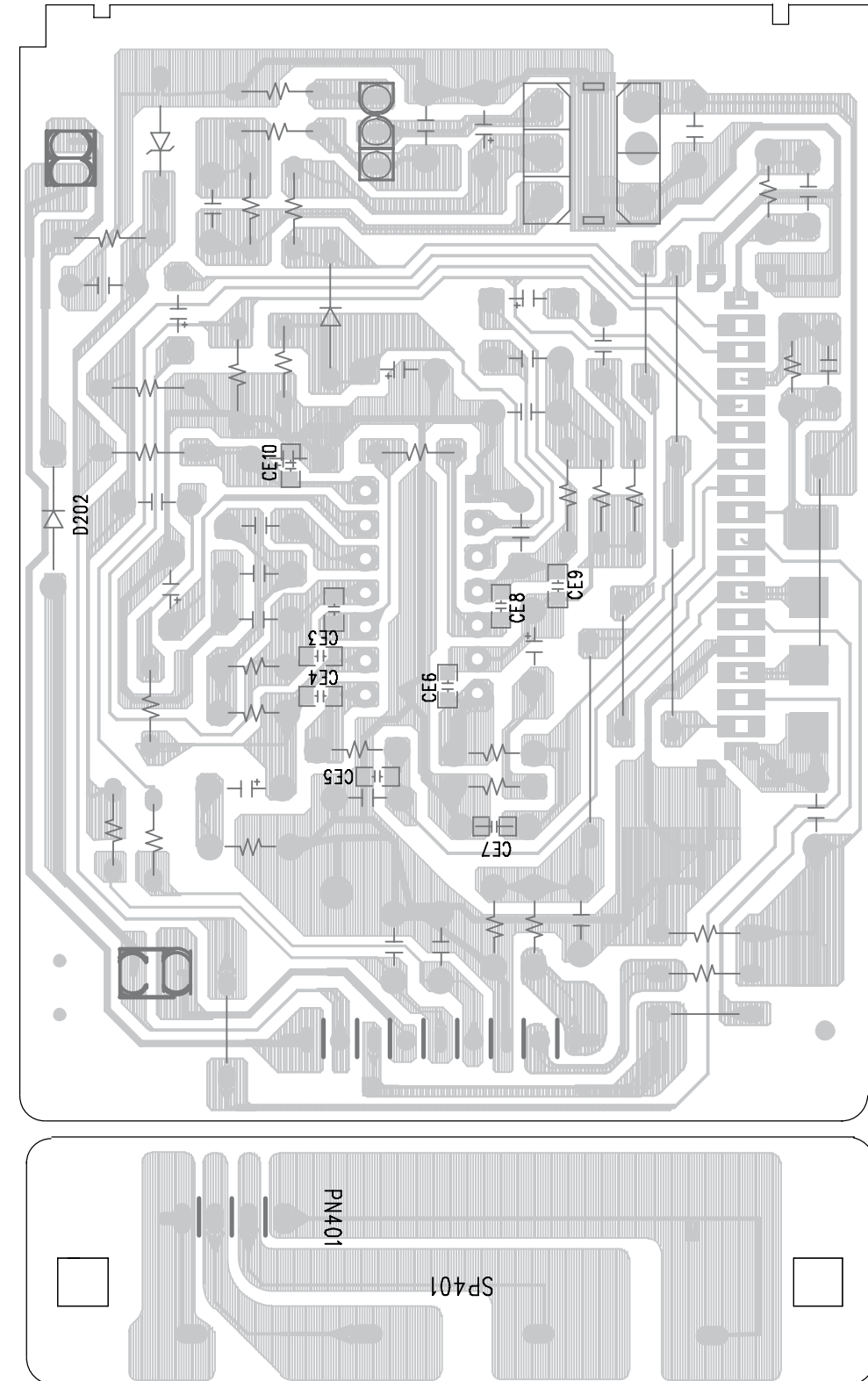
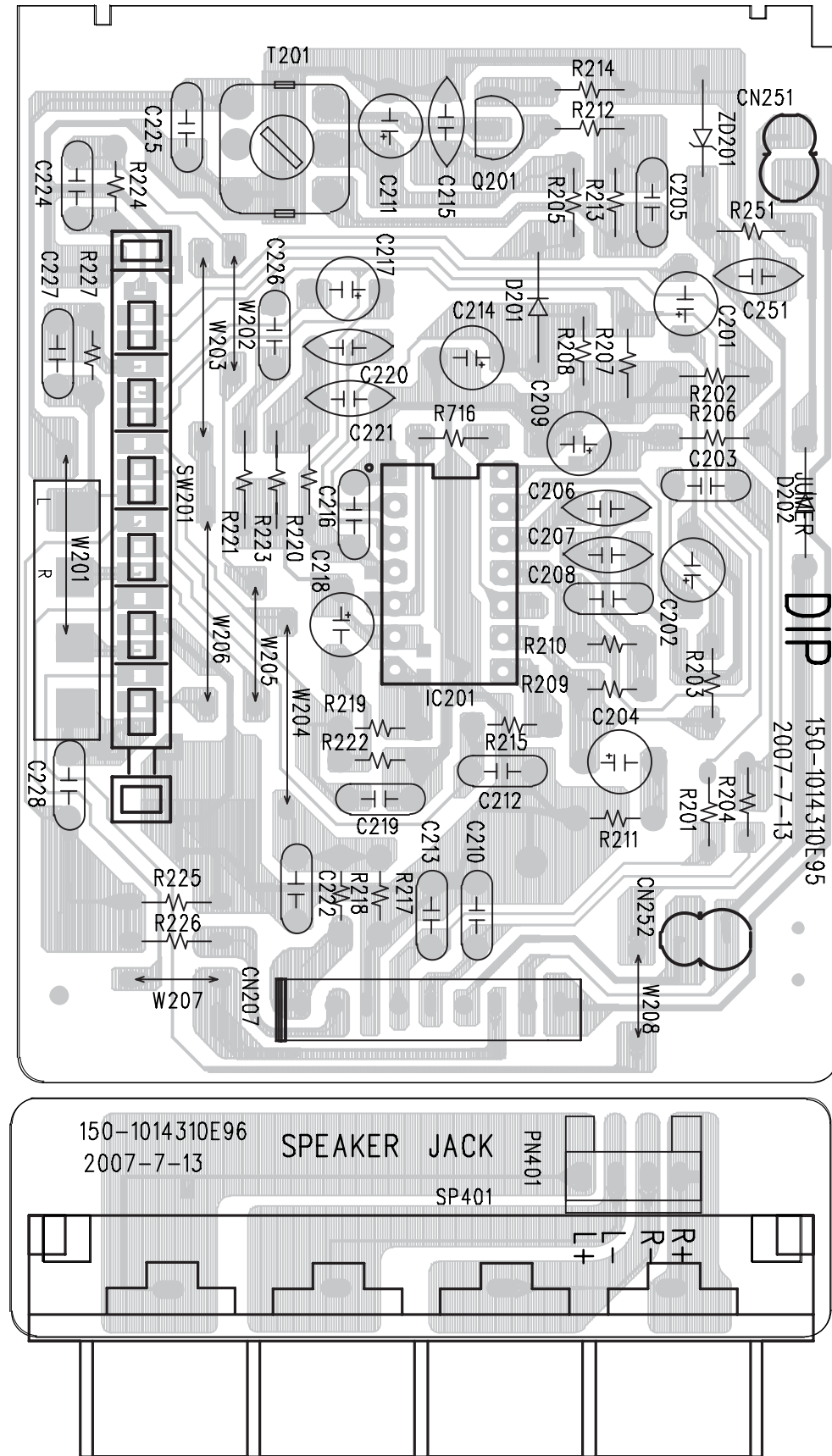
LAYOUT DIAGRAM - MCU BOARD - BOTTOM



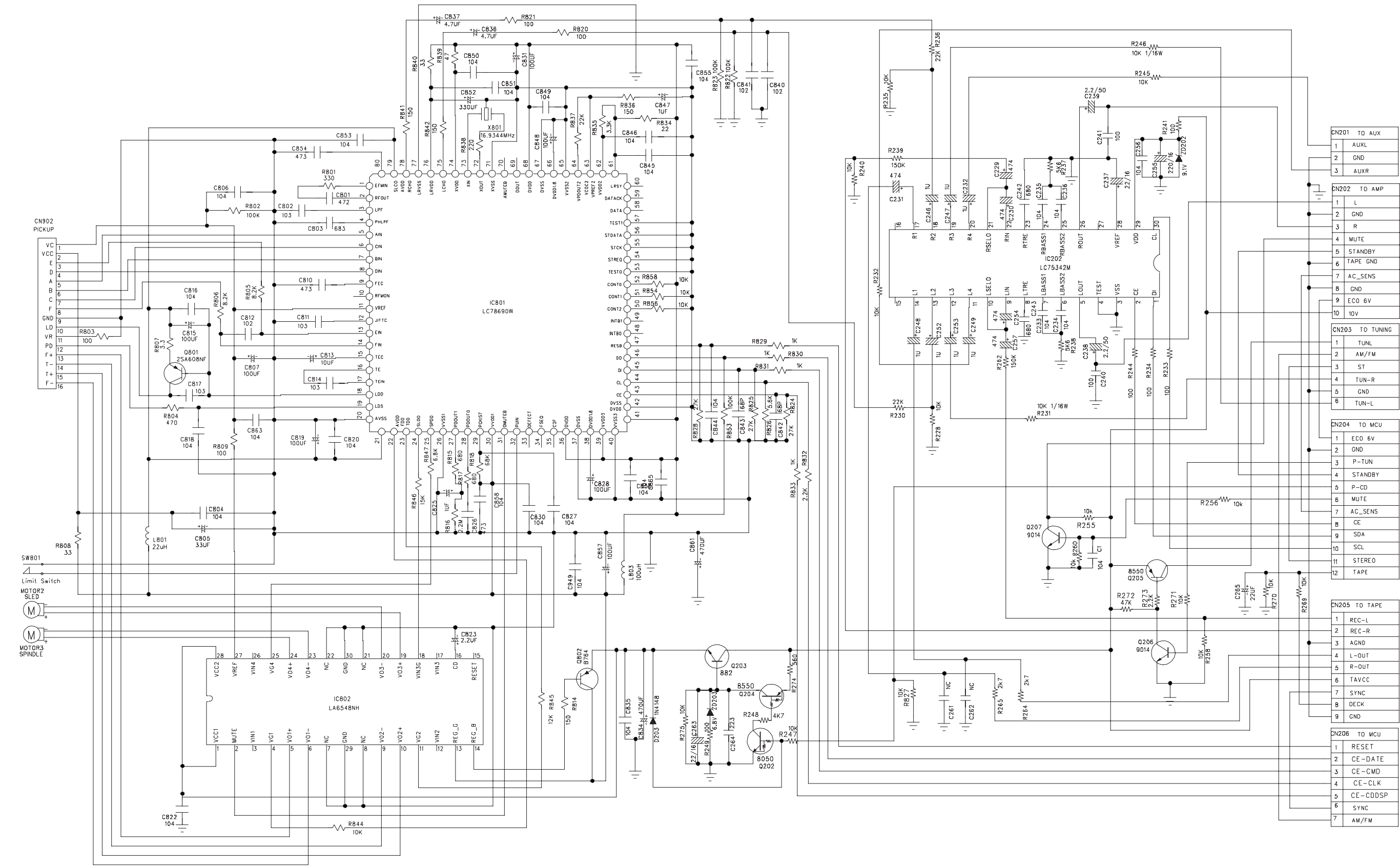
CIRCUIT DIAGRAM - CASSETTE BOARD



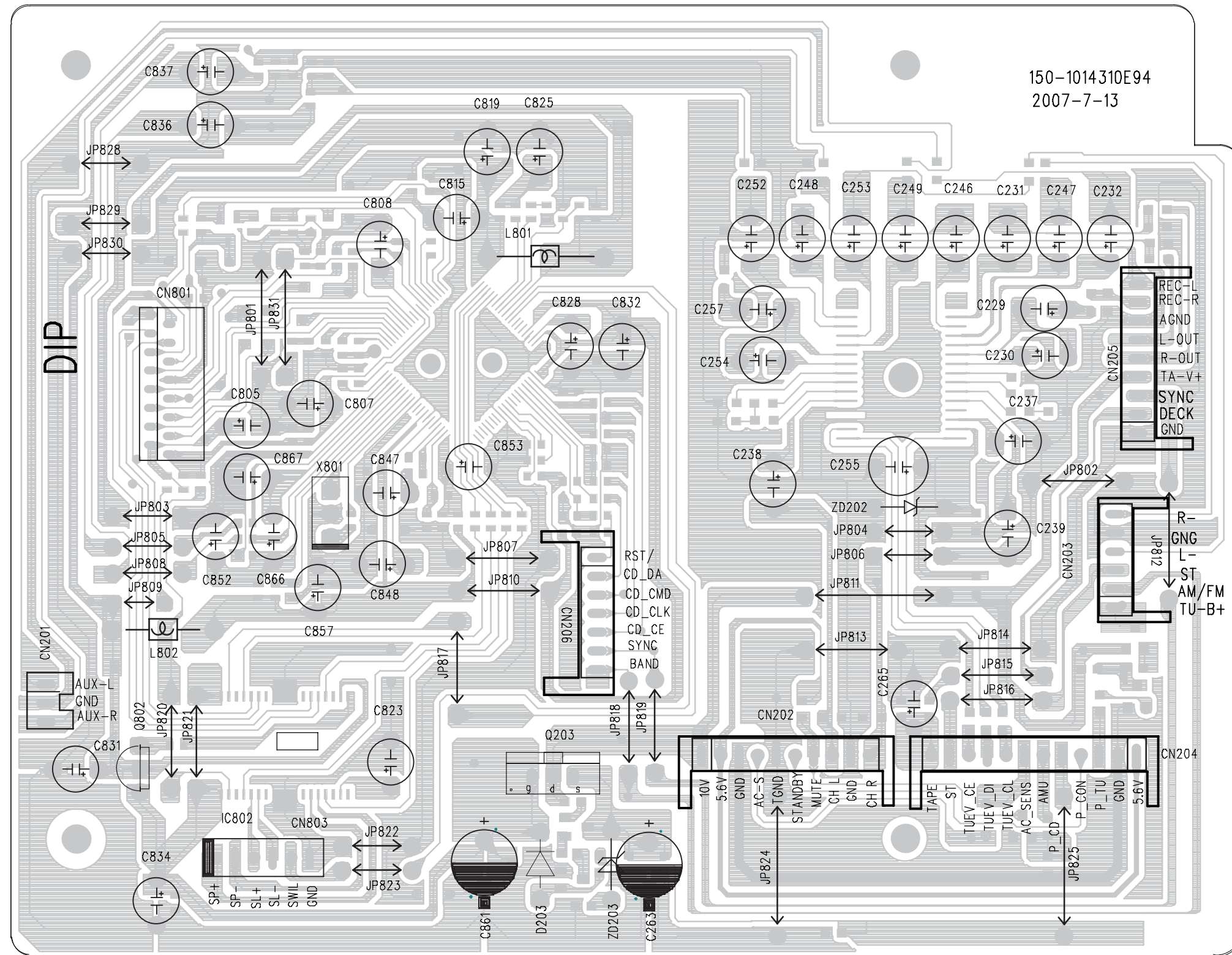
LAYOUT DIAGRAM - CASSETTE BOARD



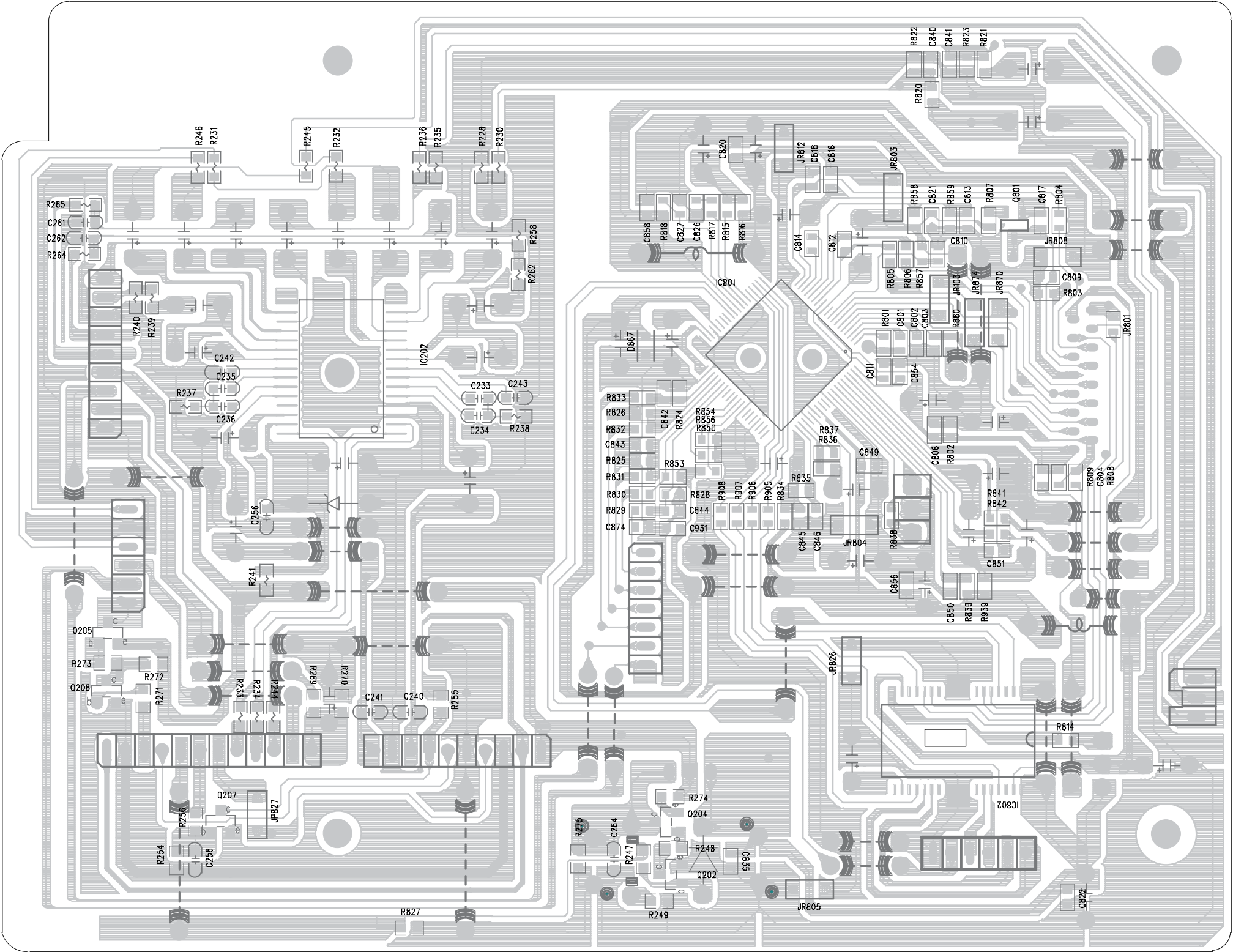
CIRCUIT DIAGRAM - CD BOARD



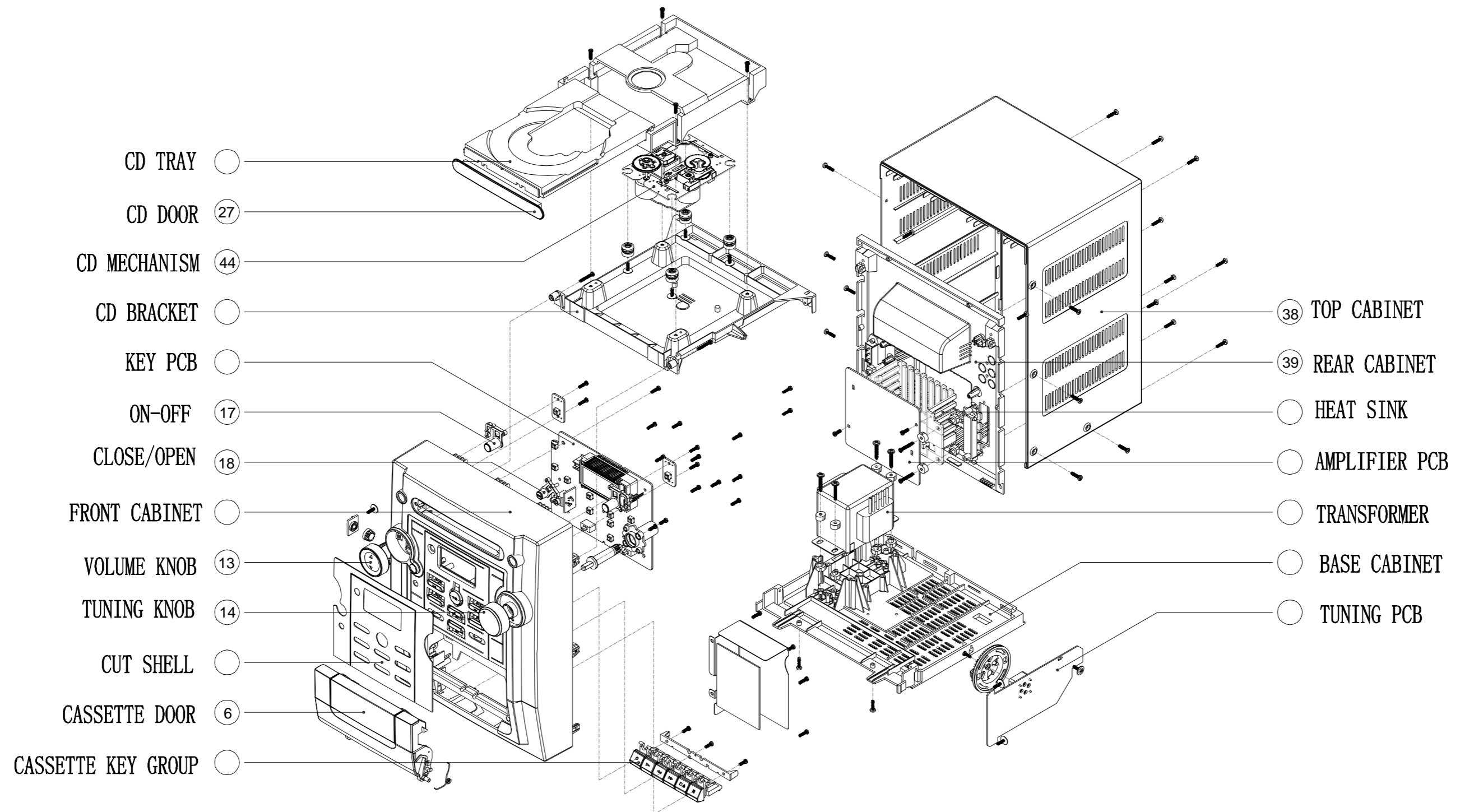
LAYOUT DIAGRAM - CD BOARD - TOP



LAYOUT DIAGRAM - CD BOARD - BOTTOM



EXPLODE DIAGRAM



MECHNICAL&MISCELLANEOUS PARTS

2		9940 000 04734	CASS DECK CS-21SC-820T
3		9965 100 06404	7671 FRONT LENS (1)/(55)
3		9965 100 09059	FRONT LENS(1)A (/77)
3		9965 100 10623	FRONT LENS(1)"B" (/12)
4		9965 100 06405	7671 FRONT LENS (2)/(55)
4		9965 100 09060	FRONT LENS(2)A (/77)
4		9965 100 10623	FRONT LENS INSIDE(2)"B"(/12)
5		9965 100 06406	7671 CD DOOR D SPRAY BLACK
6		9965 100 06407	CASS DOOR"E"SPRAY SILVER(/55/77)
6		9965 100 10617	7671 CASS DOOR"F"SPRAY SILVER(/12)
7		9940 000 04702	7871 CASS DOOR BRACKET
7		9940 000 04702	7871 CASS DOOR BRACKET
8		9965 100 06408	7671 STOP KNOB MOULD BLACK
9		9965 100 06409	7671 PLAY KNOB MOULD BLACK
10		9965 100 06410	7671 REC KNOB MOULD BLACK
11		9965 100 06411	7671 F.FWD KNOB MOULD BLACK
12		9965 100 06412	7671 REW KNOB MOULD BLACK
13		9965 100 06413	7671 VOLUME KNOB SPRAY SILVER
14		9965 100 06414	7671 TUNING KNOB SPRAY SILVER
15		9965 100 06415	FUNCTION SLIDE KNOB SPRAY RED
16		9965 100 06416	7671 PAUSE KNOB MOULD BLACK
17		9965 100 06417	7671 POWER KNOB MOULD BLACK
18		9965 100 06418	7671 CD SILDE KNOB MOULD BLACK
19		9965 100 06419	DBB KNOB SPRAY RED:(FWM143/55)
19		9965 100 10619	7671 DBB KNOB SPRAY BLUE(/12)
20		9965 100 06420	7671 BAND SLIDE KNOB SPRAY RED
20		9965 100 10618	(FM/AM)/FUNCTION SWITCH SPRAY(/12)
21		9965 100 03944	TUNING HOLDER
22		9940 000 04719	CASS HOLDER
23		9940 000 04724	TUNING KNOB GEAR
24		9940 000 04726	7831 GEAR (MODE:0.8)
25		9940 000 04727	7831 GEAR STAND (MODE:0.8)
26		9965 100 06421	7931 ANT CONNECTO PLATE
27		9965 100 03945	DOOR
28		9965 100 06422	CD MECH SHIELD COVER T=0.3mm
37		9940 000 04736	SLIDE SWITCH (SSV-12-8700S)
38		9965 100 02240	7671 TOP CAB
39		9965 100 06426	REAR CABA MOULD BLACK (HIPS)
40		9965 100 06427	7671 INSULATOR UPPER
41		9965 100 06428	7671 INSULATOR DOWN
44		9965 000 38819	CD MECHANISM SANYO DA11VF
CDLD		9965 000 38820	CD LOADER WXD-8210 (COMPLETED)
ACCORD	▽	9965 100 07654	AC CORD VDE-APP L=1650mm BLK W (/55)
ACCORD	▽	9965 100 04702	APP AC CORD SET W/K-1004 (/77)
TANSFM	▽	9965 100 07655	TRANSFORMER,VDE-STD,EI-66
47		9965 100 06436	REMOTE HANDSET MCS SECTION:55
ACPLUG	▽	9965 100 07662	UL-APP 110V 3A PLUG CONVERTOR
SPJK401		9940 000 04779	SPEAKER TERMINAL 4P MSP-124V
RL401	▽	9965 100 02293	RELAY:DC5V (ME-7,005-HL)
T401	▽	9965 100 03960	STDBY TRASFO VDE 230V

MECHNICAL&MISCELLANEOUS PARTS

9965 100 07663	FWM143 COMPLETE SPEAKER L(/55/77)
9965 100 10624	FWM143/12 COMPLETE SPEAKER L(/12)
9965 100 07664	FWM143 COMPLETE SPEAKER R(55/77)
9965 100 10625	FWM143/12 COMPLETE SPEAKER R(/12)

ELECTRICAL PARTS - MCU BOARD

IC102	9965 000 38835	IC ET3600 SOP8
IC301	9965 100 06423	IC LC87F7BC8A (MCU) (SOP100)(/55/77)
IC301	9965 100 09061	IC LC877B80A-59H4(QIP100E)(/12)
IC302	9940 000 04737	IC D6208 (MOTOR DRIVER) SOT8
L301	9940 000 04773	INDUCTOR (R-TYPE) 100UH
L302	9940 000 04773	INDUCTOR (R-TYPE) 100UH
L303	9965 100 07656	COIL 4.7uHCWR4-4R7K-877112
L304	9965 100 07656	COIL 4.7uHCWR4-4R7K-877112
L305	9965 100 07656	COIL 4.7uHCWR4-4R7K-877112
L306	9965 100 07656	COIL 4.7uHCWR4-4R7K-877112
L307	9965 100 07656	COIL 4.7uHCWR4-4R7K-877112
L322	9940 000 04773	INDUCTOR (R-TYPE) 100UH
LCD301	9940 000 04789	LCD SDT-M3797-TP-4
LD301	9940 000 04788	LED BLUE D5 (DL5NBCH-W)
REM301	9940 000 03956	SENSOR AT136B 36KHZ 5V
SW301	9965 000 38829	SLIDE SW (SSH-23D15-G5-NS)

ELECTRICAL PARTS - MCU BOARD

IC102	9965 000 38835	IC ET3600 SOP8
IC301	9965 100 09061	IC LC877B80A-59H4(QIP100E)
IC302	9940 000 04737	IC D6208 (MOTOR DRIVER) SOT8
L303	9965 100 07656	COIL 4.7uHCWR4-4R7K-877112
L304	9965 100 07656	COIL 4.7uHCWR4-4R7K-877112
L305	9965 100 07656	COIL 4.7uHCWR4-4R7K-877112
L306	9965 100 07656	COIL 4.7uHCWR4-4R7K-877112
L307	9965 100 07656	COIL 4.7uHCWR4-4R7K-877112
L310	9965 100 09062	INDUCTOR 2.2uH(CMI1608-2R2K)
L311	9965 100 09062	INDUCTOR 2.2uH(CMI1608-2R2K)
L312	9965 100 09062	INDUCTOR 2.2uH(CMI1608-2R2K)
L313	9965 100 09062	INDUCTOR 2.2uH(CMI1608-2R2K)
L314	9965 100 09062	INDUCTOR 2.2uH(CMI1608-2R2K)
LCD301	9940 000 04789	LCD SDT-M3797-TP-4
LD301	9940 000 04788	LED BLUE D5 (DL5NBCH-W)
R312	9965 100 09062	INDUCTOR 2.2uH(CMI1608-2R2K)
REM301	9940 000 03956	SENSOR AT136B 36KHZ 5V
SW301	9965 000 38829	SLIDE SW (SSH-23D15-G5-NS)
SW302	9965 000 38829	SLIDE SW (SSH-23D15-G5-NS)
TACTSW	9940 000 04792	TACT SW 6X6MM H4.3
X301	9965 000 38822	CRYSTAL JF32.768kHz JU2x6
X302	9965 000 38823	CRYSTAL 8MHz(HC-49US)
ZD301	9940 000 04747	ZENER DIODE+-5% 3V3
ZD302	9965 000 38828	ZENER DIODE -5% 3V9
ZD303	9940 000 04748	ZENER DIODE+-5% 4V7
ZD304	9940 000 04747	ZENER DIODE+-5% 3V3

ELECTRICAL PARTS - OPEN/CLOSE & STANDBY BOARD

31	9965 100 06424	7671 LCD REFLECTOR
SW309	9940 000 04792	TACT SW 6X6MM H4.3
SW314	9940 000 04792	TACT SW 6X6MM H4.3

ELECTRICAL PARTS - CASSETTE BOARD

34	9940 000 04784	REC/PLAY SW (PS-62D01-NS)
IC201	9940 000 04007	IC D7312
Q201	9965 000 38841	TR NPN STD1862LPF
T201	9940 000 04008	IFT BRO 10MM
ZD201	9965 000 38826	ZENER DIODE -5% 7V5

ELECTRICAL PARTS - RADIO BOARD

IC101	9940 000 03962	IC TA2111NG
L101	9965 000 38855	AM OSC RED 10mm
L102	9940 000 03964	AM IFT YEL 7MM A956
L107	9965 100 04745	COIL 100uH3x8CEC-101K708036NP
PVC101	9940 000 04775	PVC (DF443DF04-A04)
Q103	9940 000 03973	CHIP TR MMBT9015C
Q104	9940 000 04743	CHIP TR MMBT9018H
Q105	9940 000 04743	CHIP TR MMBT9018H
Q106	9940 000 03972	CHIP TR MMBT9014C
ZD101	9965 000 38828	ZENER DIODE -5% 3V9

ELECTRICAL PARTS - AUX AMP HEADPHONE BOARD

C505	9965 100 02291	E CAP 35V +-20% 3300uF
C509	9965 100 02290	E CAP 25V +-20% 4700uF
C520	9965 100 06429	E CAP 25V 2200u(SAFETYVENT)
D501	9965 000 38843	BRIDGE RECTIFIER KBU604 6A
IC501	9965 100 02288	IC TDA8947J (DBS17P)(SOT243-1)(/55/77)
IC501	9965 100 09066	IC TDA8948J (DBS17P)(PHILIPS)(/12)
JK201	9940 000 03989	ST PHONES JACK 3.5MM 7P
JK601	9965 100 06430	AUX RCA JACK (RCA-207)(RED/WHT)
Q501	9940 000 04064	POWER TR PNP KTA1046/P
Q502	9965 100 02289	NFET BUK7535-55A
ZD501	9965 100 06432	ZENER DIODE+-5% 10V (EP) (TP)
ZD502	9965 100 06431	ZENER DIODE+-5% 5V6 (TP)
ZD503	9965 100 06433	VOLTAGE REG. DIODE BZX79-B24
F501	9940 000 04782	FUSE 50T D5X20 1.6A 250V(S.B.)
F502	9965 100 02287	FUSE T6.3A 250V 5x20

ELECTRICAL PARTS - CD BOARD

CN801	9965 100 06434	16P(FLEX FT C)CONNECTL150P1A
IC202	9965 000 38832	IC LC75342-TLM-E
IC801	9965 100 02298	IC LC78692W (CD DSP) SQFP80
IC802	9965 000 38842	IC LA6548NH (4 CH DRIVER)
L801	9965 100 06435	RCOIL 22uHOD2.3x4
L802	9965 100 04745	COIL 100uH3x8CEC-101K708036NP
Q203	9965 100 02270	TR NPN UTC 2SD882 (TO-126)
X801	9965 100 02297	C RESON'R QZTT16.93MX 3PINS
ZD202	9940 000 04751	ZENER DIODE+-5% 9V1
ZD203	9940 000 04749	ZENER DIODE+-5% 6V8
Q802	9965 000 38840	TR PNP 2SB764E-SSH-AE(TP)

BOM FOR VERSION /37

9965 100 10624	FWM143/12 COMPLETE SPEAKER L
9965 100 10625	FWM143/12 COMPLETE SPEAKER R
9965 100 06436	REMOTE HANDSET MCS SECTION:55

Note: Only these parts mentioned in the list are normal service parts.

VERSION LIST

VERSION 1.1ADD VERSION /77 PARTLIST
VERSION 1.2ADD VERSION /12 PARTLIST
VERSION 1.3ADD VERSION /37/55 PARTLIST