

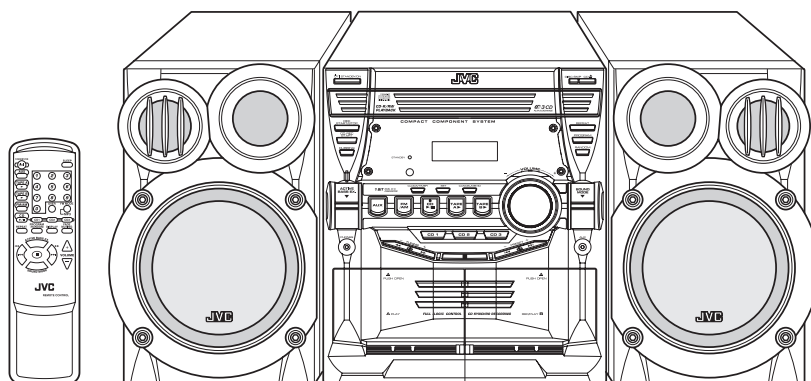
JVC

SCHEMATIC DIAGRAMS

COMPACT COMPONENT SYSTEM

MX-KB2, MX-KB15

CD-ROM No.SML200408



Area suffix

C ----- Canada

Contents

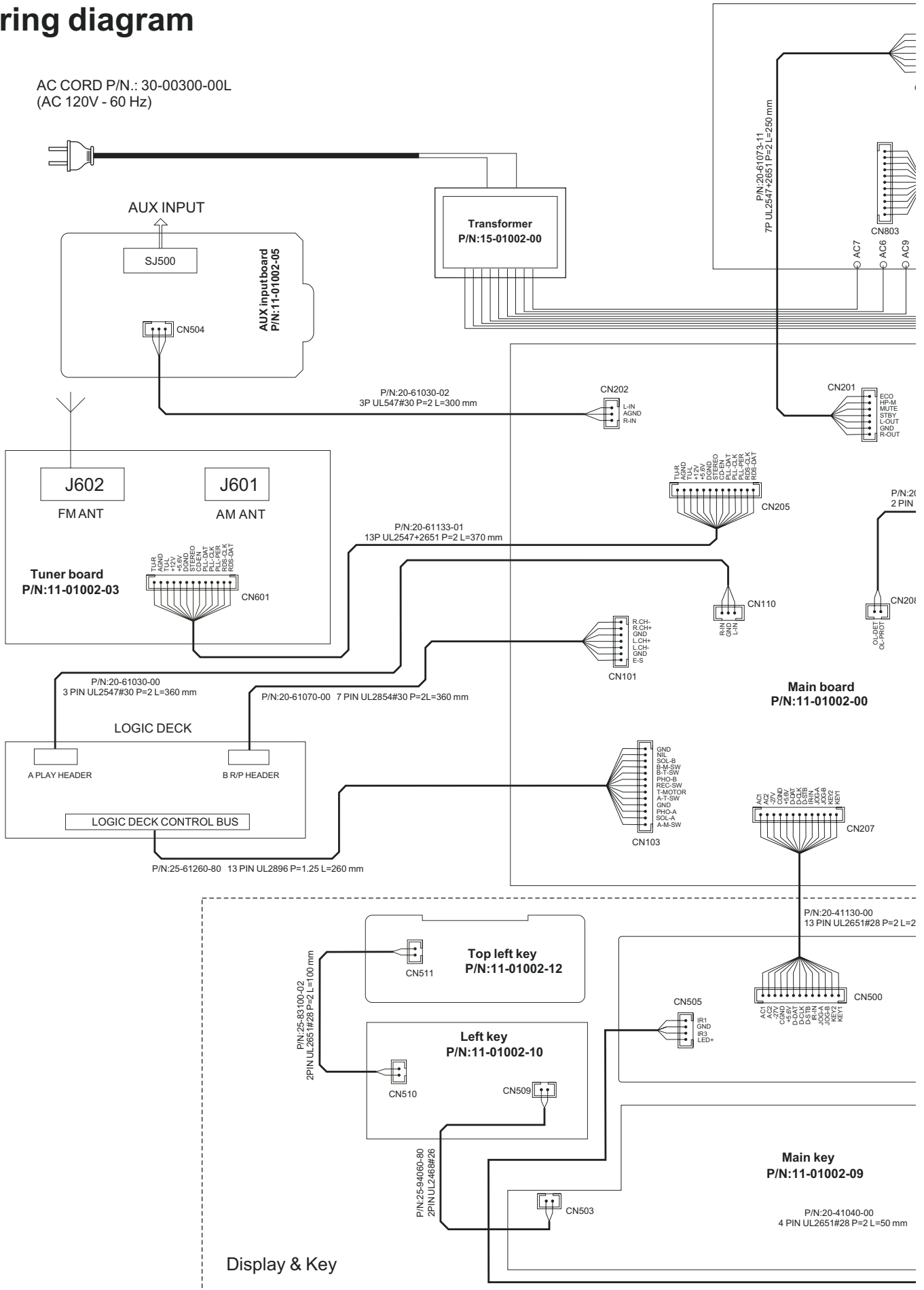
Wiring diagram	2-2
Block diagram	2-4
Standard schematic diagrams	2-6
Printed circuit boards	2-18 to 22

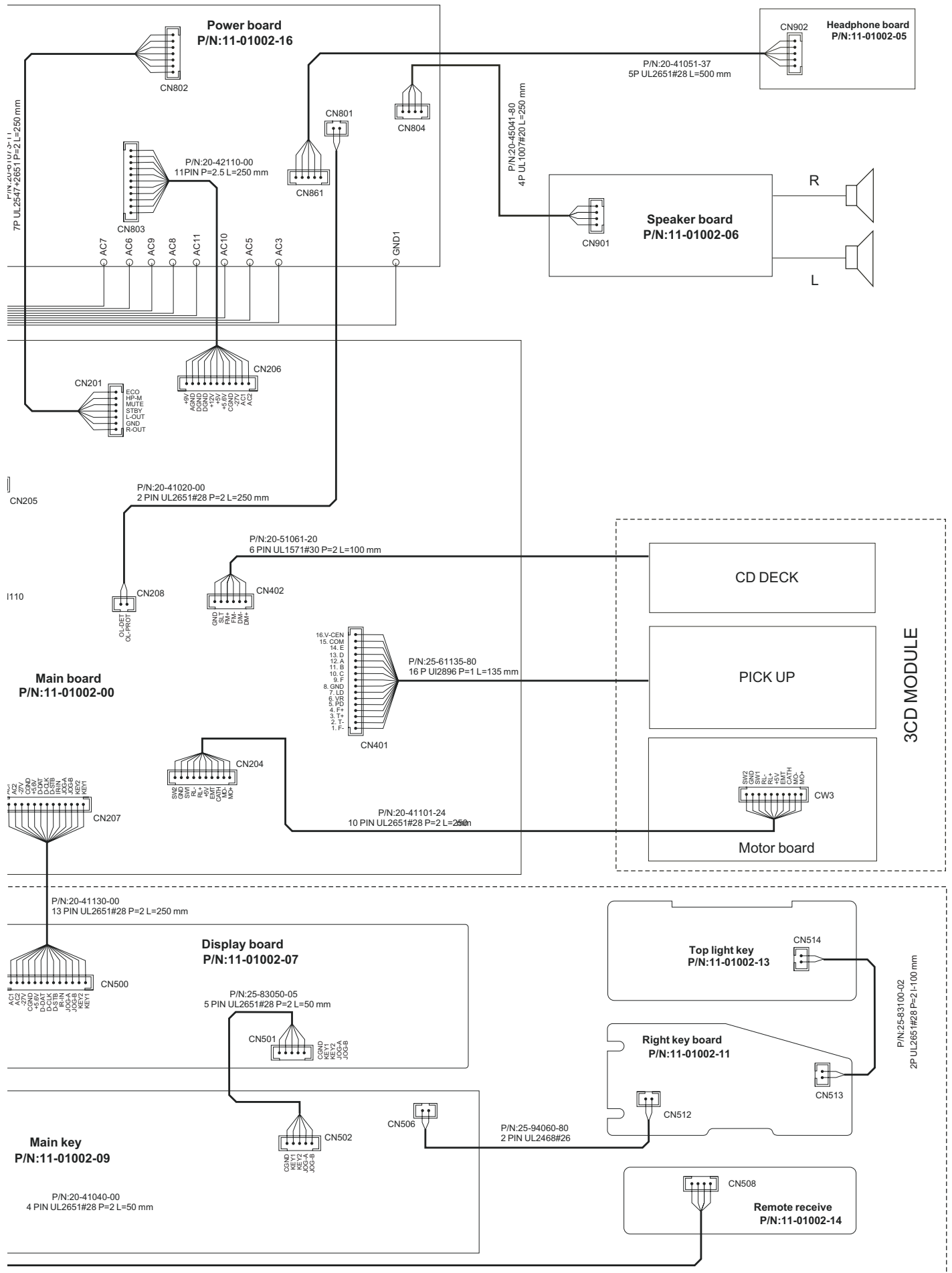
In regard with component parts appearing on the silk-screen printed side (parts side) of the PWB diagrams, the parts that are printed over with black such as the resistor (■), diode (⬤) and ICP (●) or identified by the "⚠" mark nearby are critical for safety.

< M E M O >

Wiring diagram

AC CORD P/N.: 30-00300-00L
(AC 120V - 60 Hz)





Key board section

CD2
S501

SC6122

REMOTE RECEIVER

ENCODE VOLUME

EN500

4 5 3 2 1

JOG-A
JOG-B

+9V

U101
TA8189
4CH Pre+Rec
AMP with ALC

BIAS OSC
R/P SWITCH CIRCUIT

LOGIC DECK-TP

+9V

REC-E
H-PLAY
L-REC

IC602
TA2149BFN

IF

IC600
TC9257 PLL

AUX INPUT

VFD

Filament
AC3.3V

+5V

U500 SC6311
VFD CONTROL / DRIVER
KEY SCAN

KEY2
KEY1

STANDBY LED

LED500

R503 680R

GVSW
CDR-W GAIN
CONTROL

+5V
VCC

DATA AND CONTROL
BUS

CPU
87EP26F-4K76

DATA
CLK
STB

U402 TA2153
RF AMPLIFIER

+5V

E
D
A
B
C
F
LD

PICKUP

RF
RFPP
RFCT
FEO

U401 TC9462
DIGITAL SERVO
1 BIT D/A CONVERTER

+5V

FOO
TRO
DMO
FMO

U403 TA20
DIGITAL SERVC

F-
T-
T+
F+

LIMIT SW

L CH
R CH
SDA
REQ
SCL

U404 TC94A02F
CD ROM DECODE
MP3 DECODE
D/A CONVERTER

ADDRESS BUS
DATA BUS
VDD 3V
VDOT 3.3V

U405 SRAM
128k x 8 (1

U406
TC74HC14

L CH
R CH

U201 TC9422F
SYSTEM E.VOLUME
(Tone control input
selector Main volume)

+9V

R832 10k
R83110k

IC801 STK402-050

LOW LOGIC DETECT
PROTECT ENABLE
Q860,Q861,Q864,Q865

OVERLOAD
DETECT

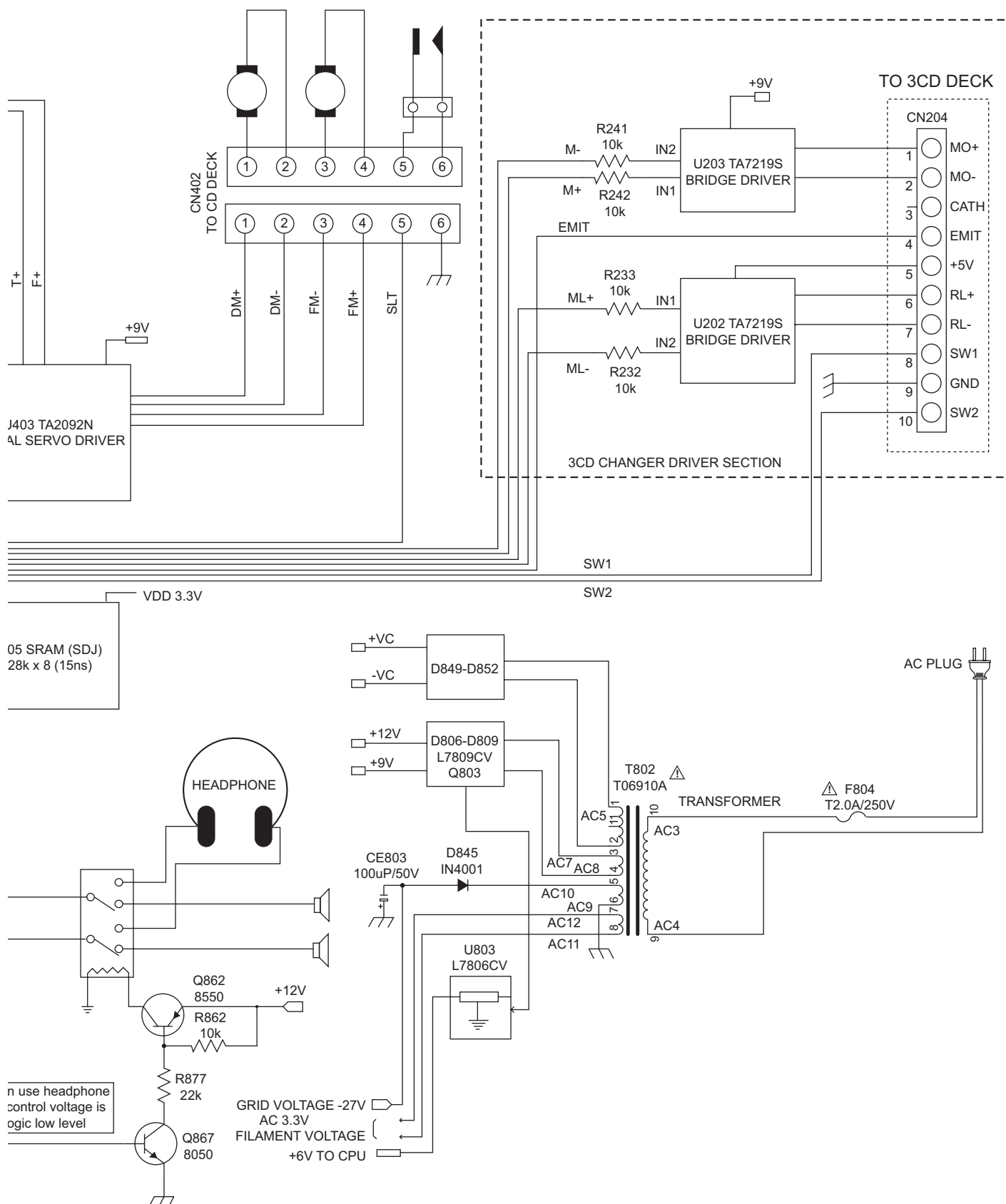
PROTECT
ENABLE

D803
IN4001

SYS_MUTE

Q812 8050
Q813 8050

When use hear
the control vol
logic low le

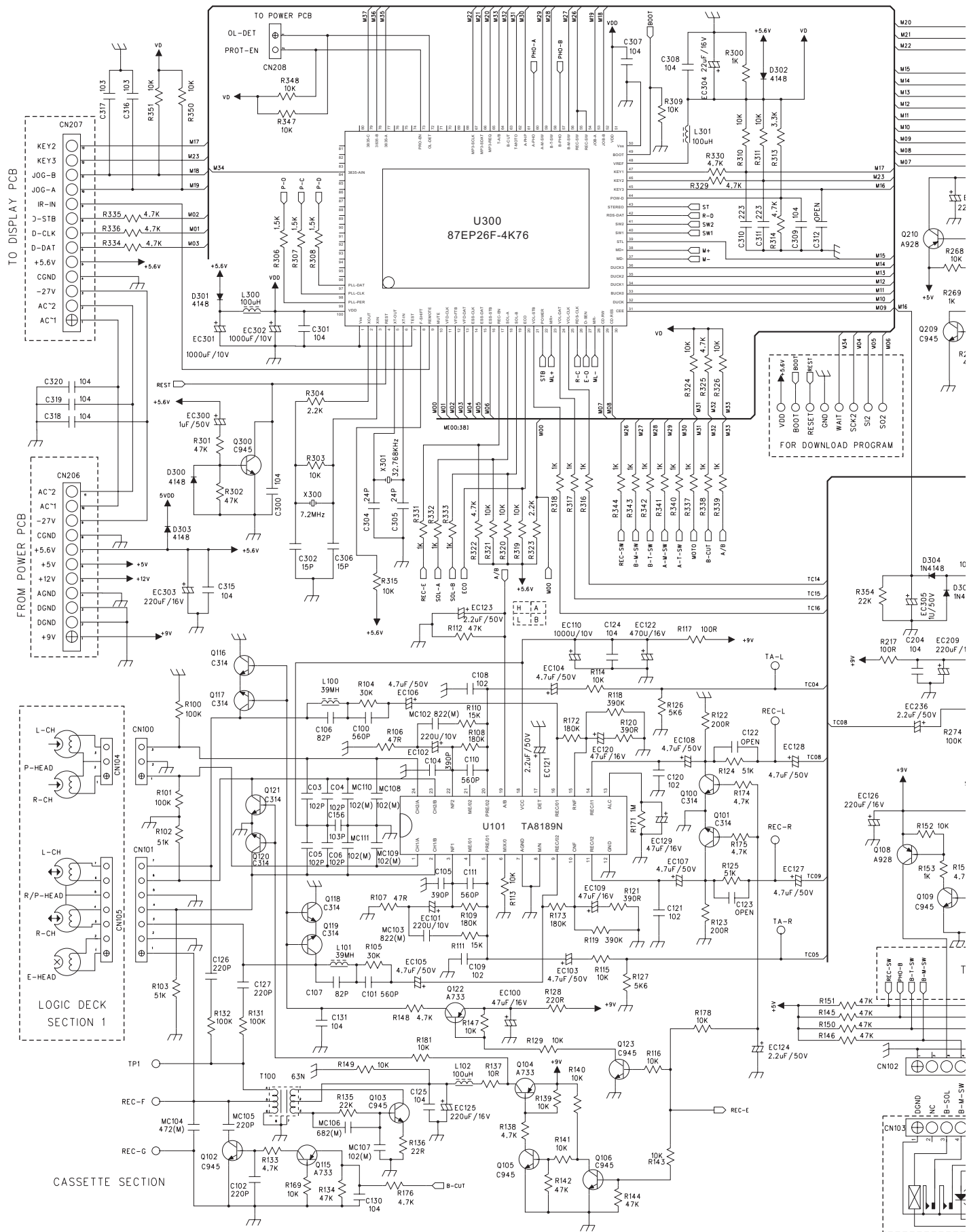


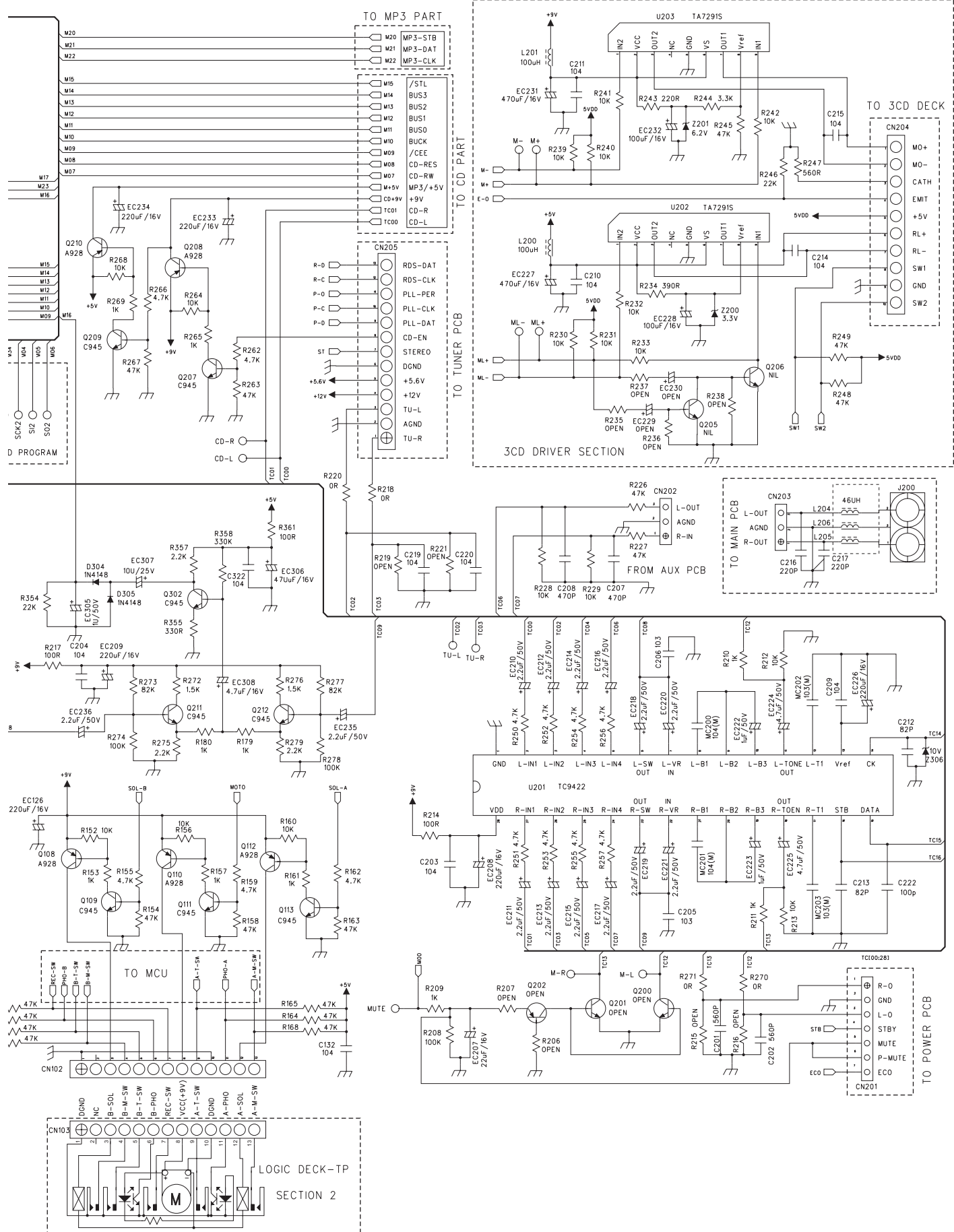
■ Primary / Power amp section



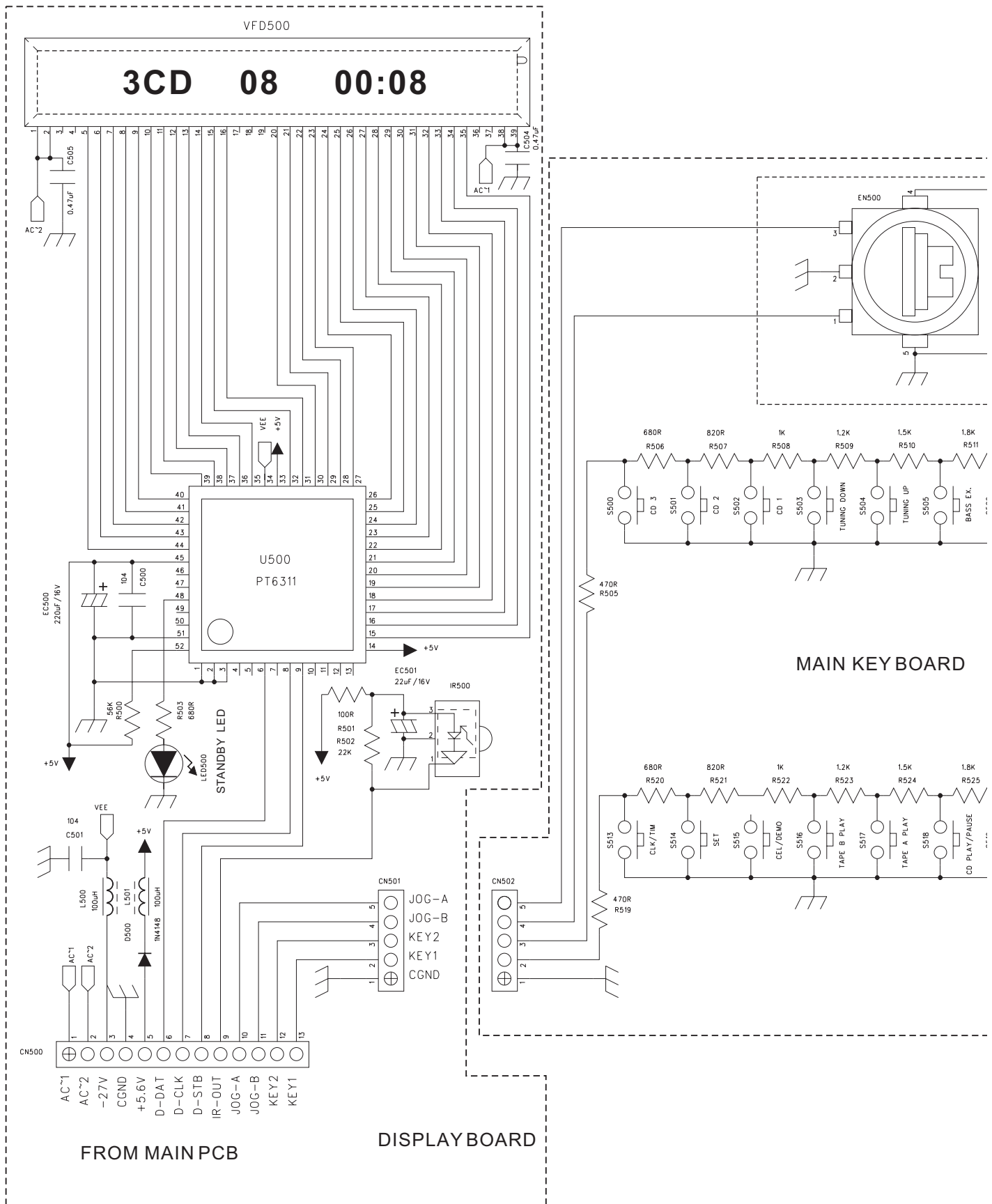


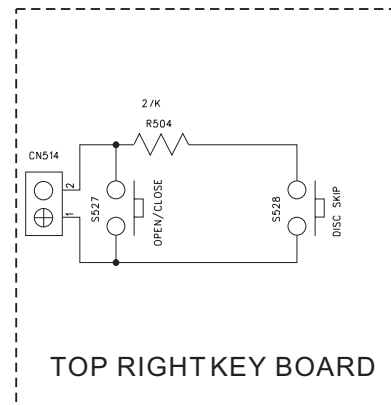
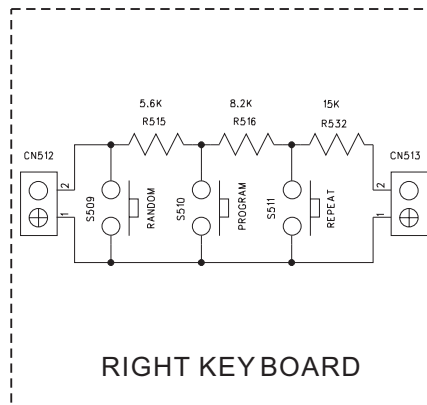
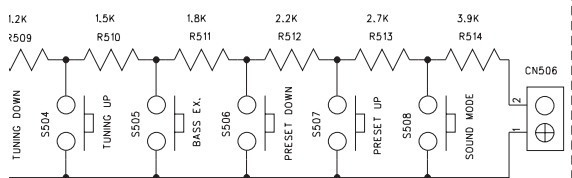
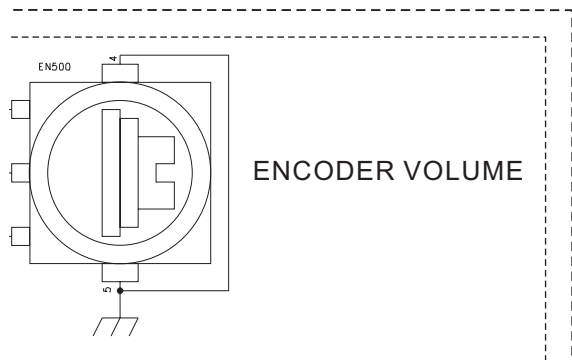
■ Main section



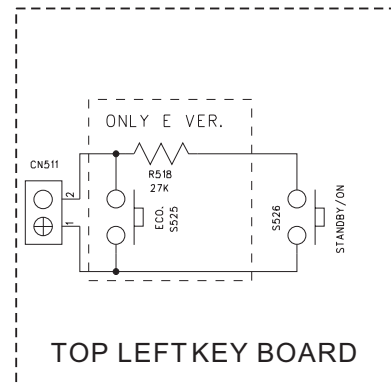
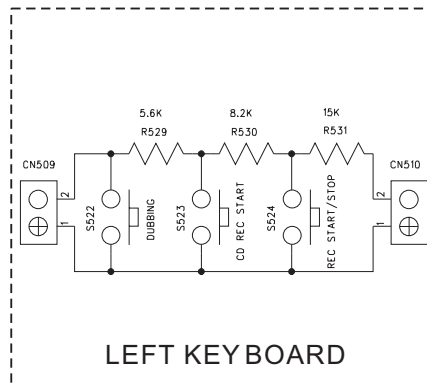
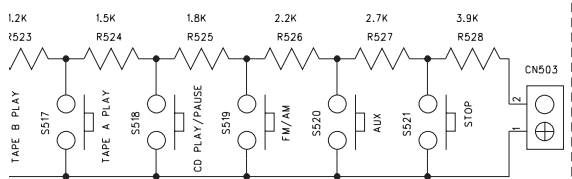


■ Display / Key control section

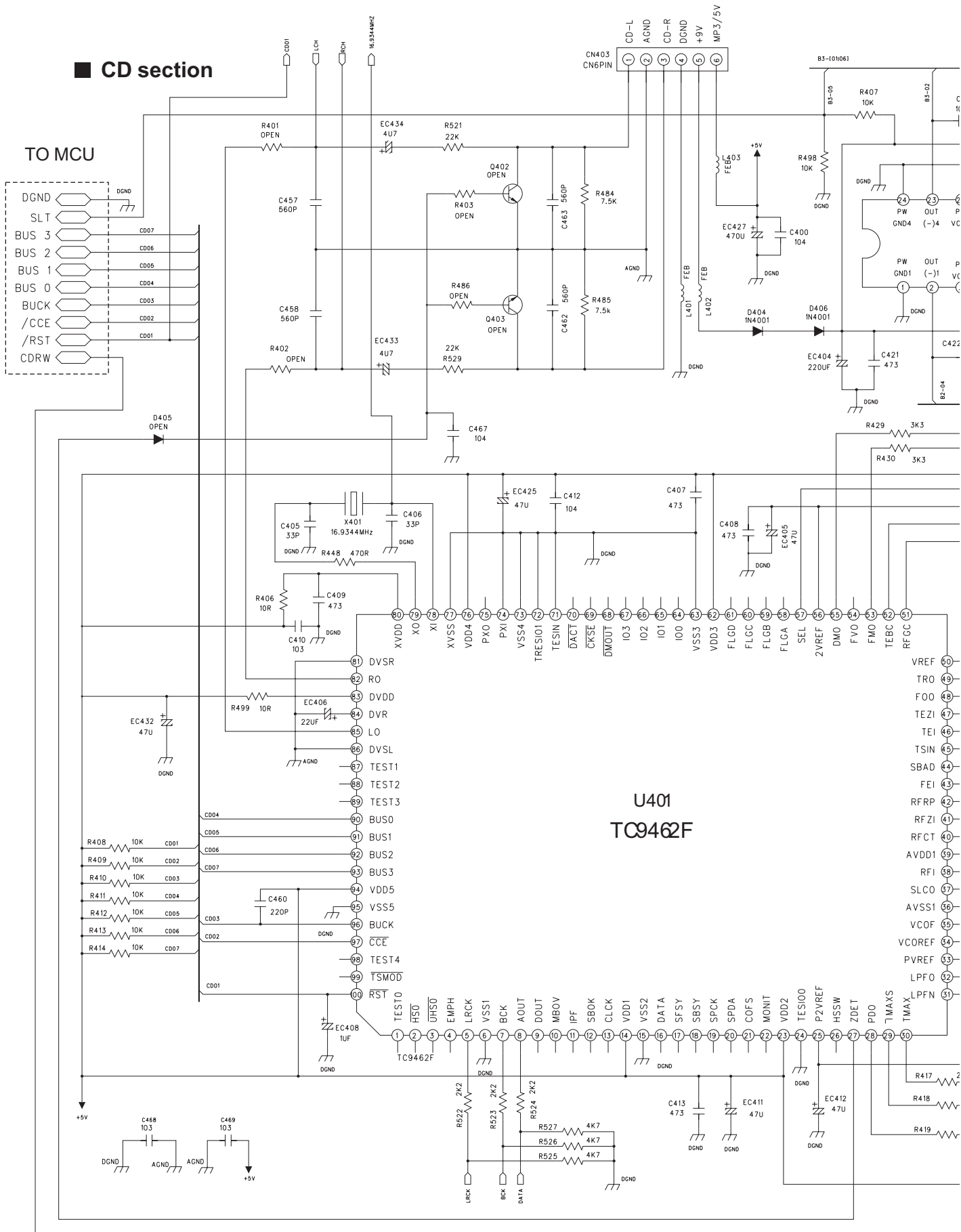




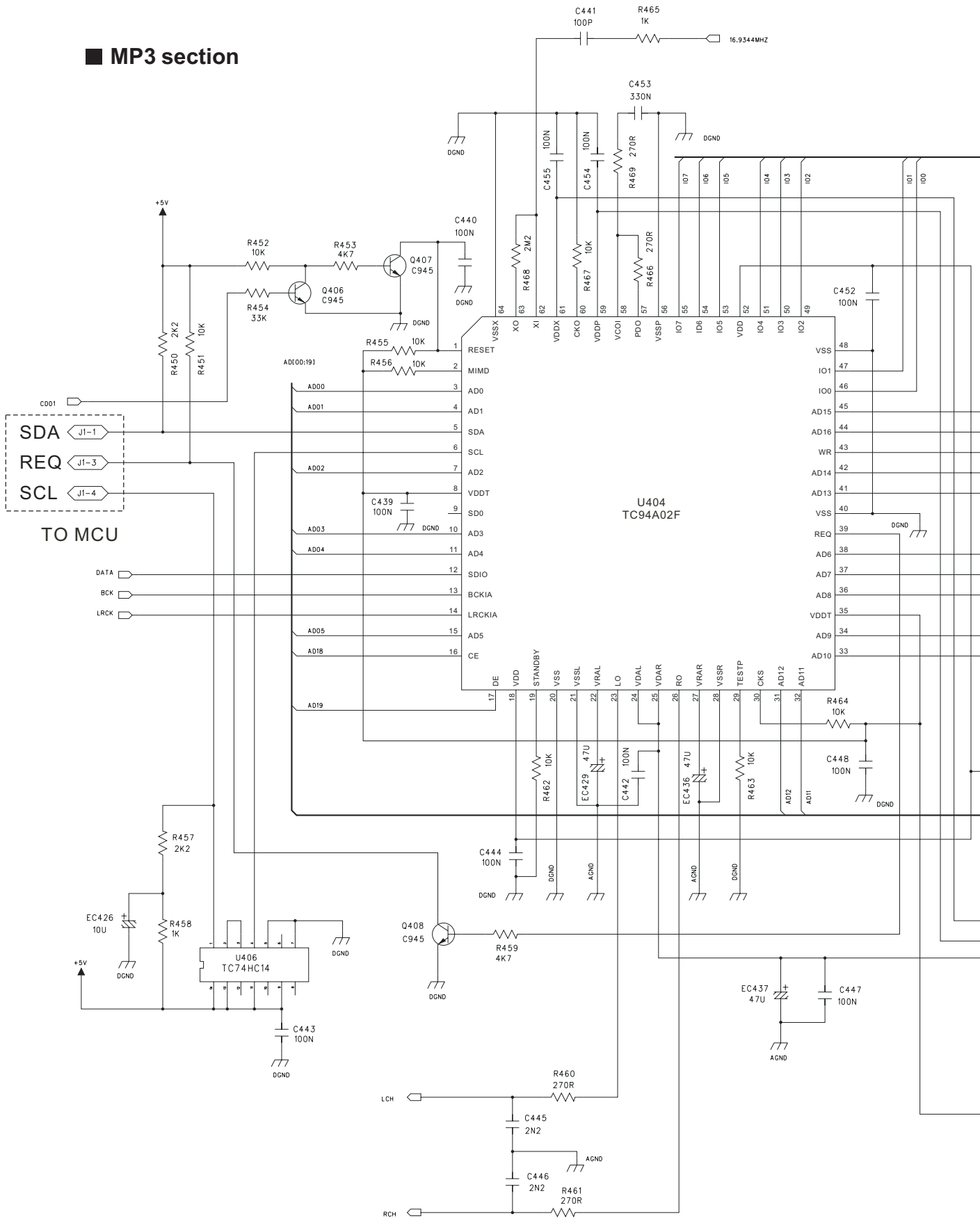
KEY BOARD

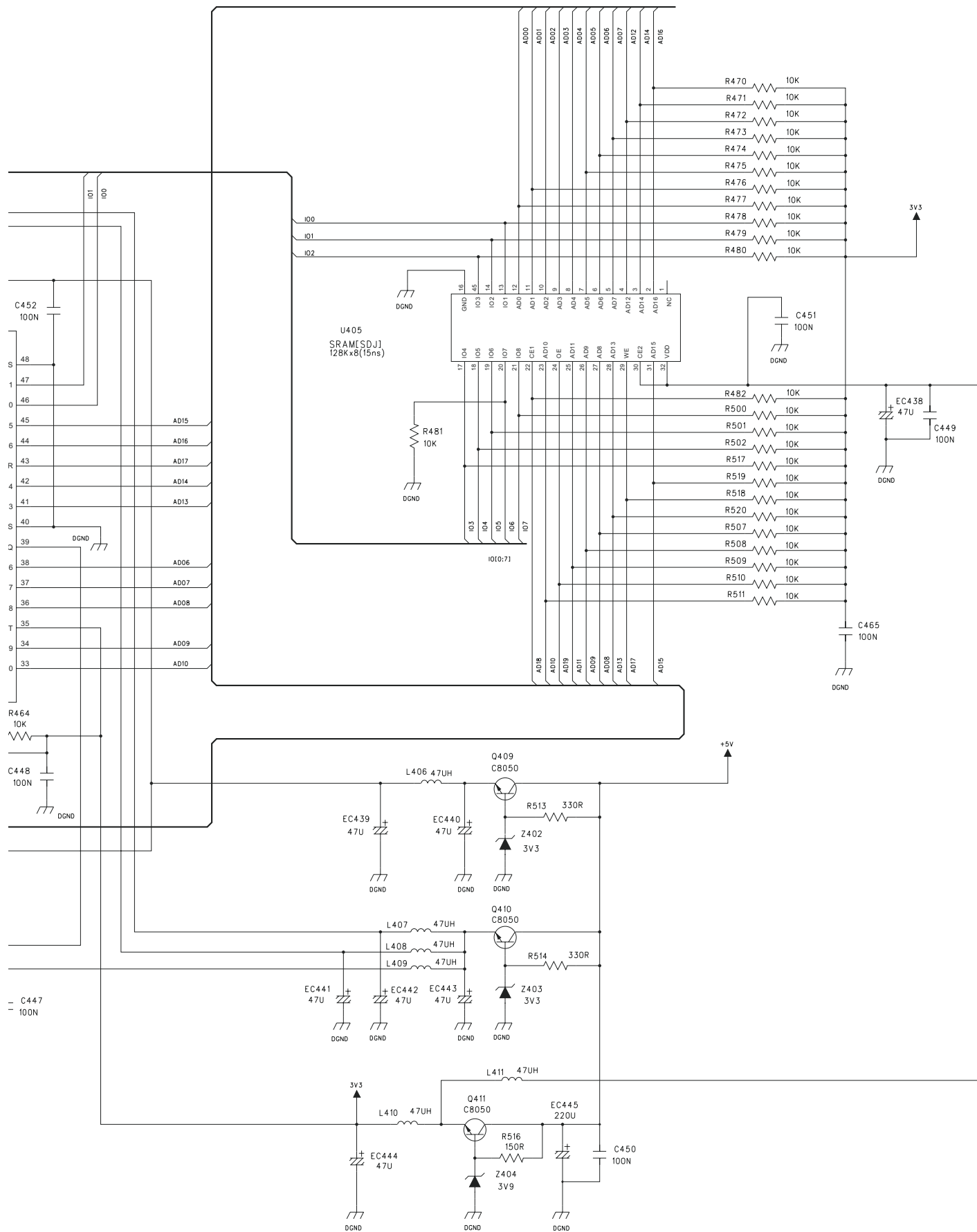


■ **CD section**

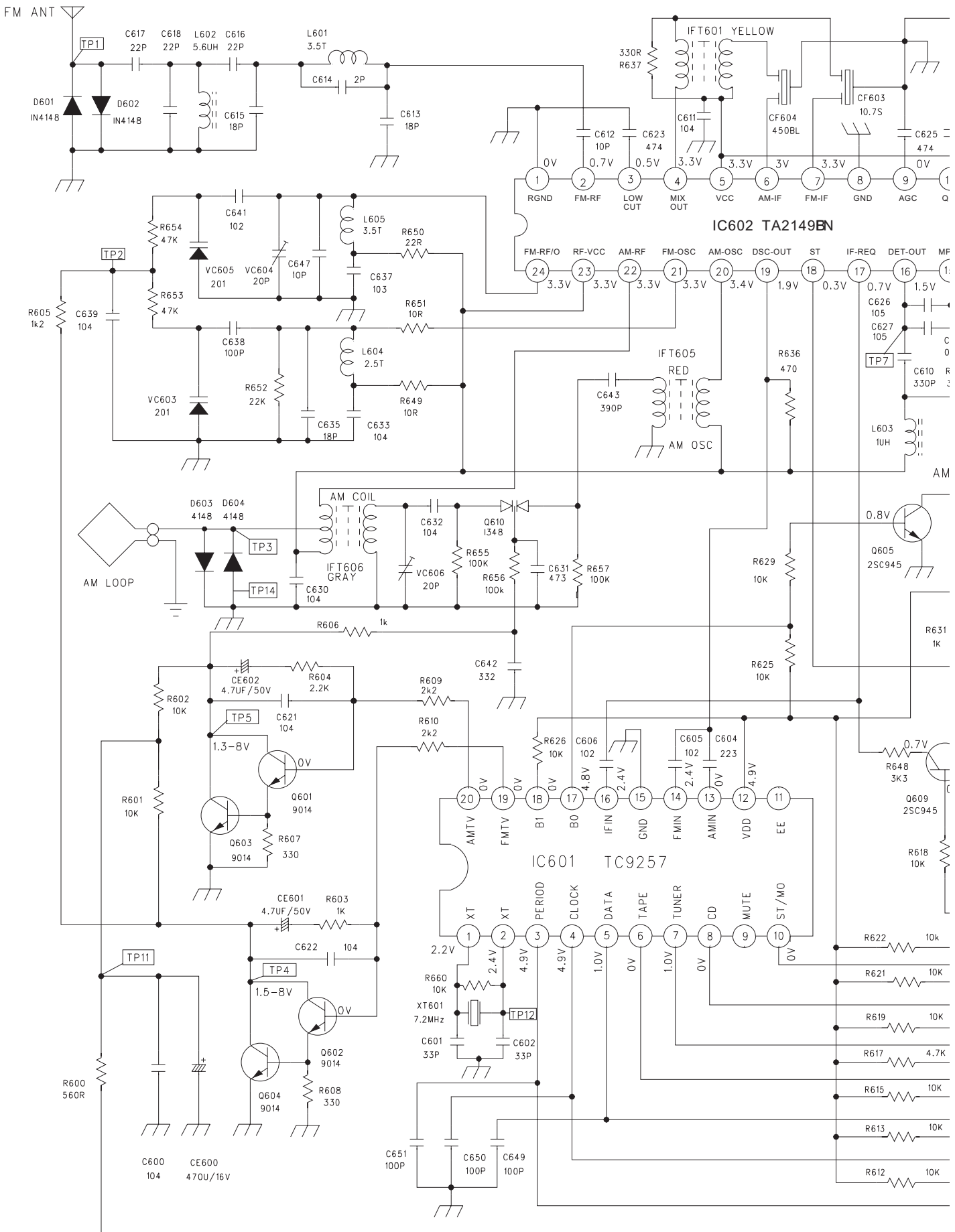


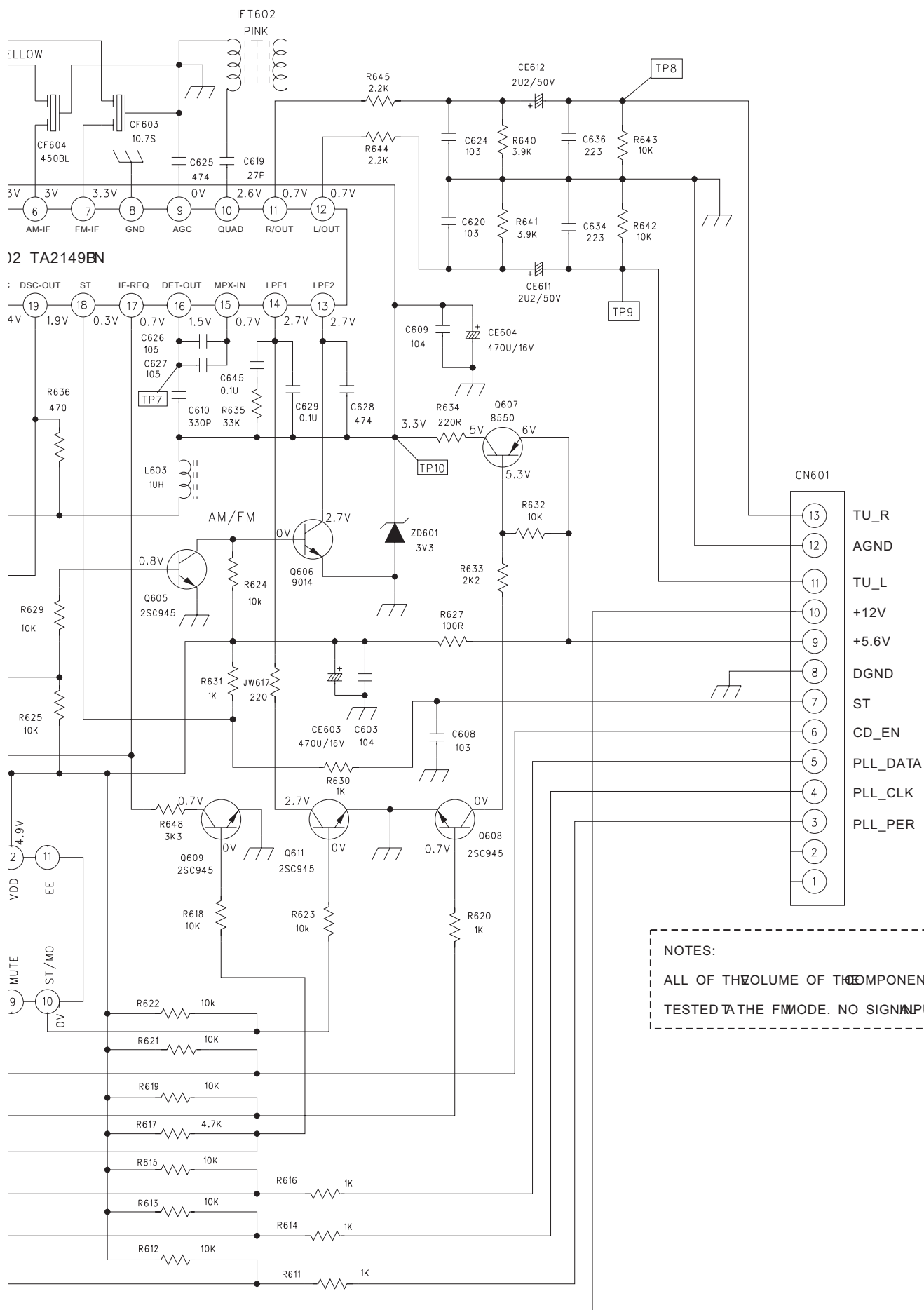
■ MP3 section





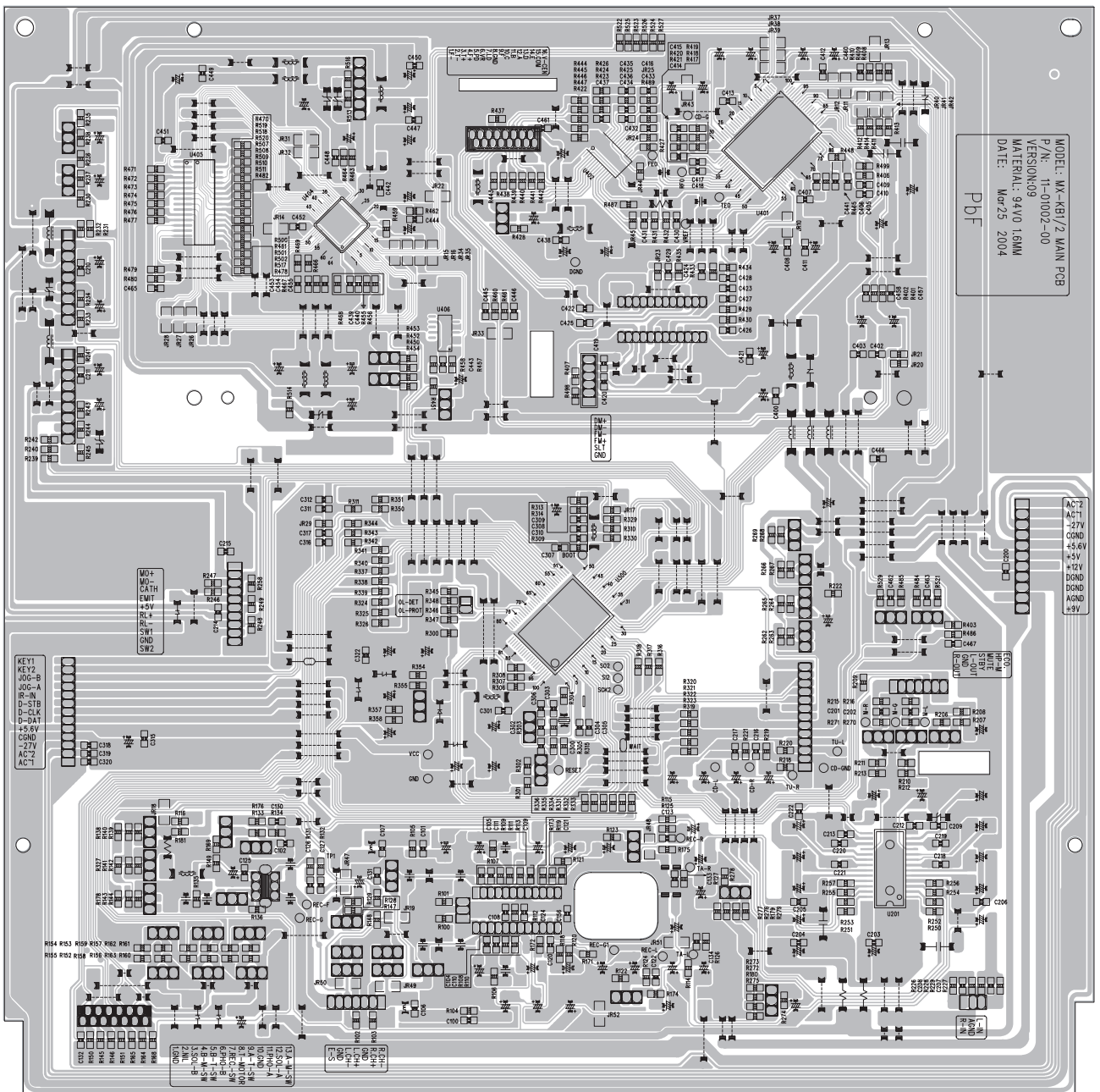
■ Tuner section



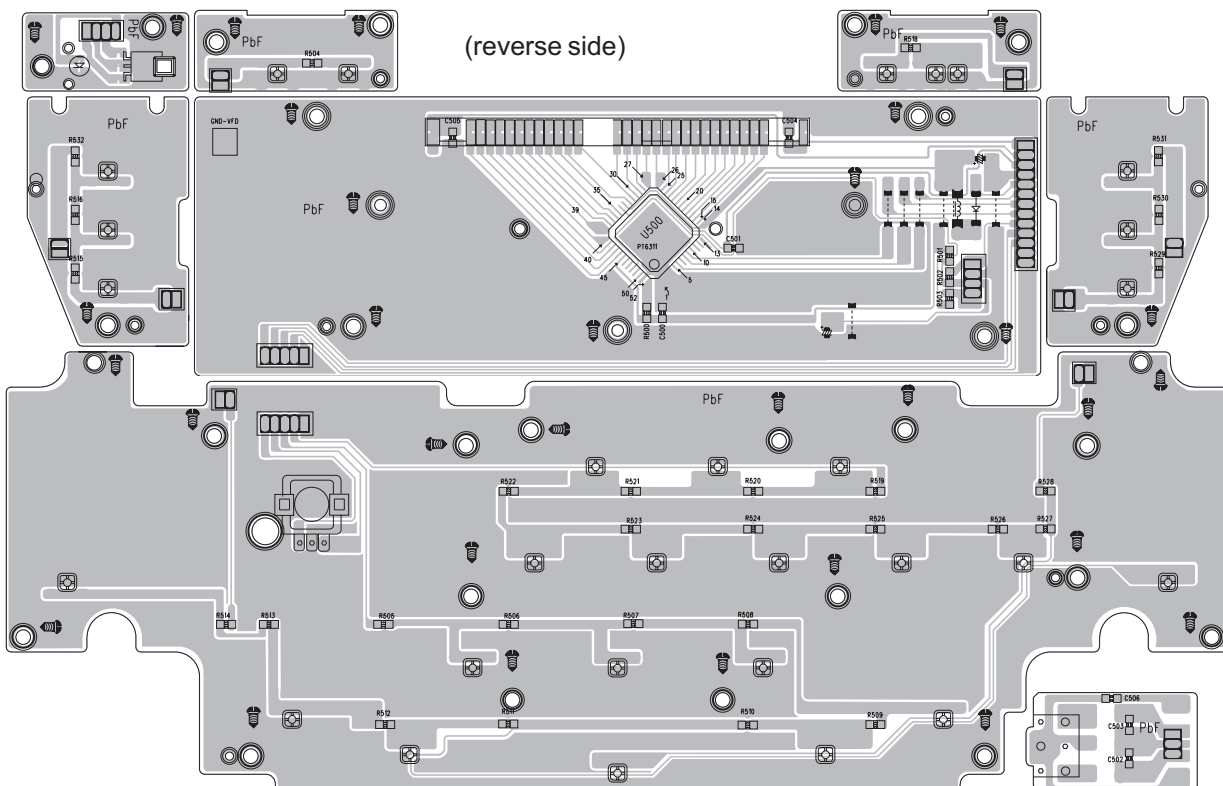
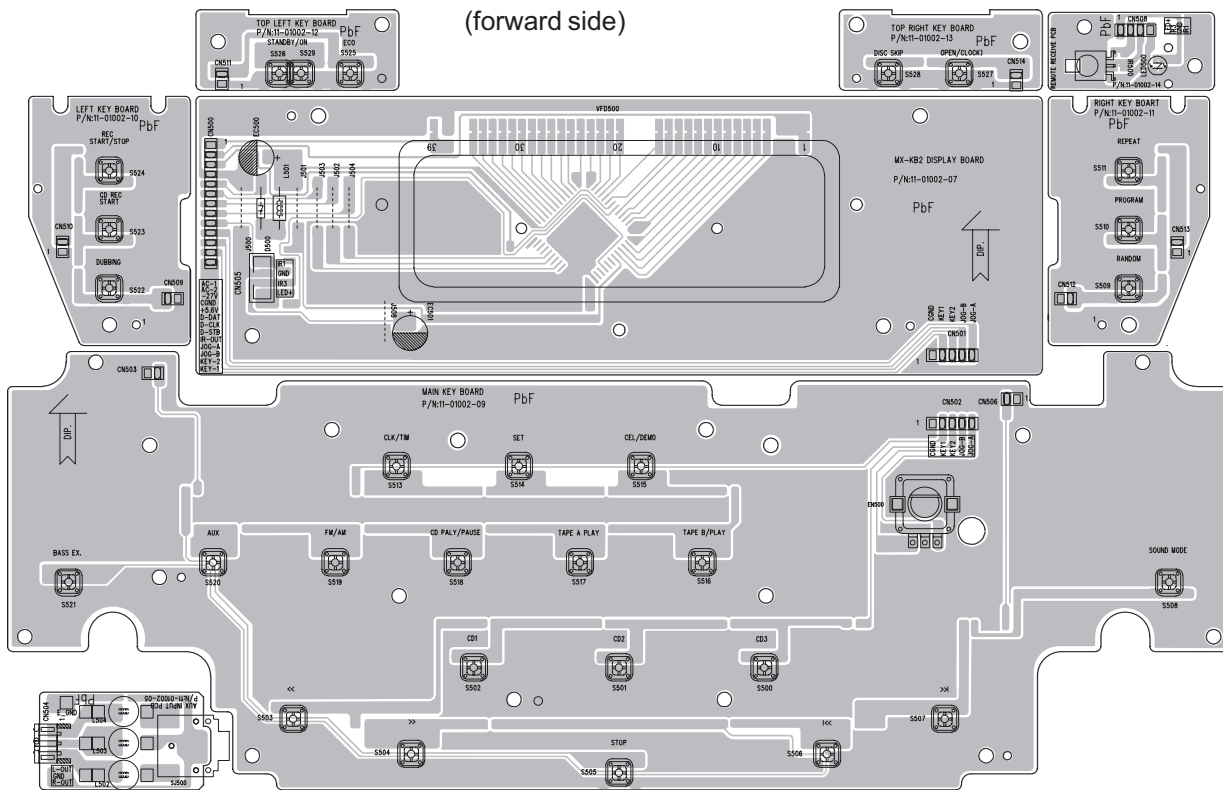


■ Main board

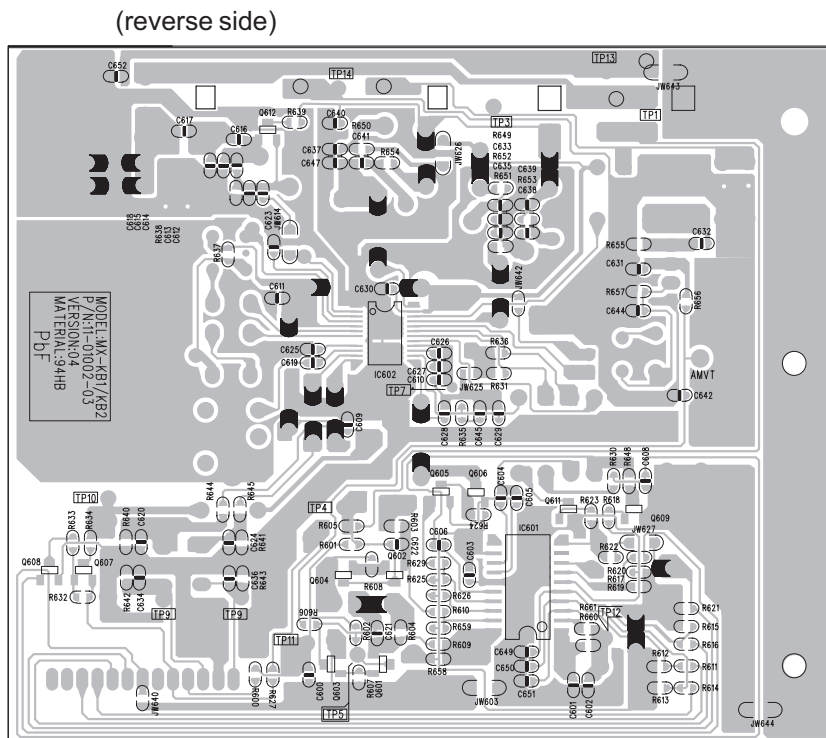
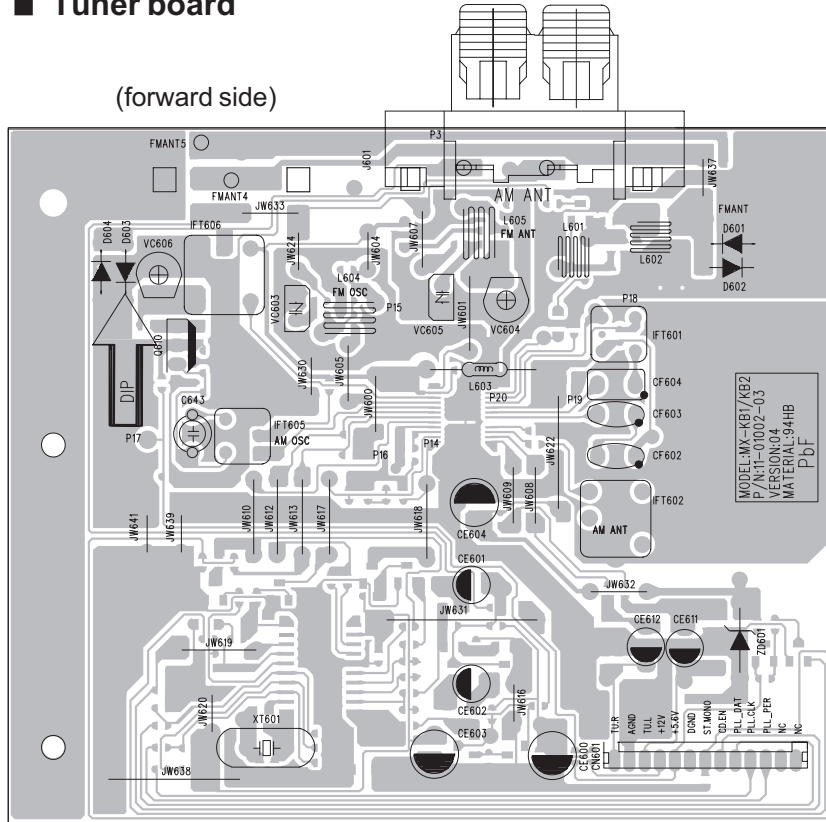
(reverse side)



■ Display board

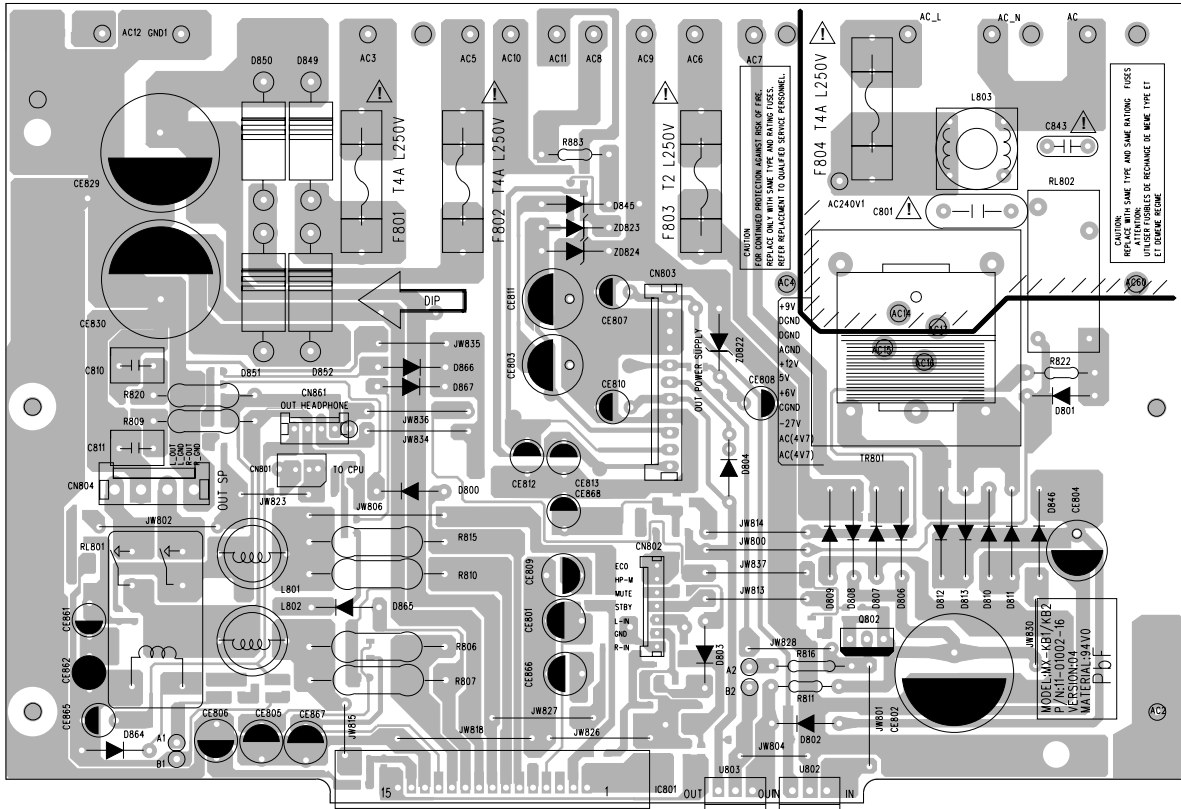


■ Tuner board

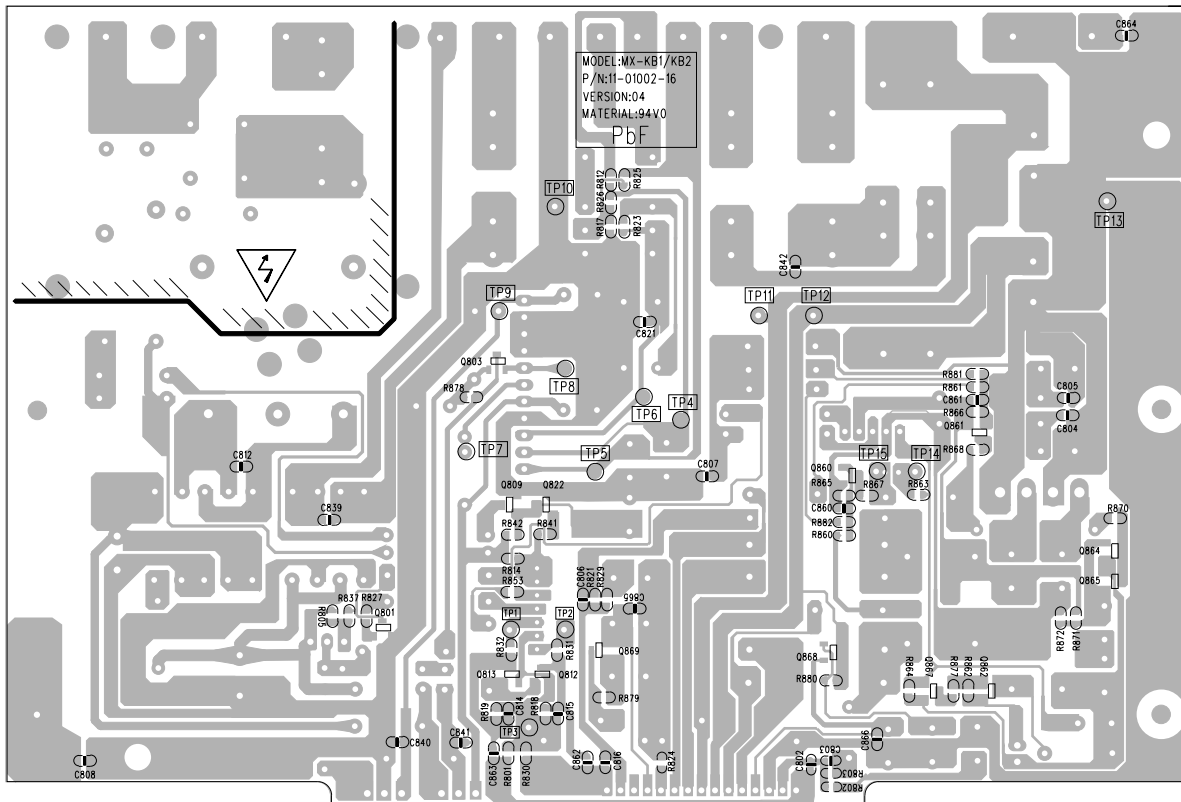


■ Trans board

(forward side)



(reverse side)



< M E M O >



Victor Company of Japan, Limited

AV & MULTIMEDIA COMPANY AUDIO/VIDEO SYSTEMS CATEGORY 10-1,1chome,Ohwatari-machi,Maebashi-city,371-8543,Japan

(No.MB287SCH)



Printed in Japan
WPC