

CM-148/GX

CM-148/GX



GX CHASSIS OVERVIEW & ALIGNMENT PROCEDURES

SECTION 2

Y-LINE DIRECT VIEW COLOR TV RECEIVER GX CHASSIS

This section of the service manual provides an overview of the GX consumer products chassis. This chassis is menu driven by its microprocessor, which allows for many adjustments to be made through the Service Menu. It contains Setup procedures (LEVEL 1 and LEVEL 2 features), Alignment procedures and cable lead dress for all screen sizes.

Through out the year as more models become available and our constant effort to improve our products, this manual may be revised to reflect those changes. The revision will be distributed through your regular service subscription program mailing.

Published by Technical Publications

ZENITH ELECTRONICS CORPORATION □ 1000 MILWAUKEE AVENUE □ GLENVIEW, ILLINOIS 60025-2493

Table of Contents

2-1	INTRODUCTION
2-1	CUSTOMER MENU
2-1	SERVICE MENU
2-4	SERVICE MENU
2-4	GENERAL SETTINGS
2-4	VIDEO PROCESSOR SETTINGS
2-4	PIP SETTINGS
2-4	AUDIO SETTINGS
2-5	CIRCUIT DESCRIPTIONS
2-5	POWER SUPPLY
2-5	POWER SUPPLY TURN ON
2-6	MICROPROCESSOR
2-8	VIDEO PROCESSOR
2-9	VERTICAL DEFLECTION
2-9	HORIZONTAL DEFLECTION
2-11	AUDIO SYSTEM
2-12	VIDEO OUTPUT
2-13	PICTURE IN PICTURE
2-14	SERVICING
2-14	STANDBY VOLTAGES
2-14	POWER ON
2-14	SWITCHED VOLTAGES
2-14	OPERATING SIGNALS
2-14	REPLACEMENT MODULES
2-15	SERVICE ADJUSTMENTS (Mechanical)
2-16	IF AND AUDIO ALIGNMENT PRODEDURE
2-16	VIDEO DETECTOR
2-16	AGC DELAY
2-16	AUDIO DETECTOR
2-16	STEREO LEVEL ADJUST (MTS & LCS)
2-16	JACKPACK REMOVED:
2-16	JACKPACK ATTACHED:
2-16	MTS STEREO ALIGNMENT COEFFICIENTS:
2-16	LCS AND MONO MODELS:

Table of Contents (continued)

2-17	PURITY & CONVERGENCE SET-UP PROCEDURE FOR COTY CRTs
2-17	PRELIMINARY SET-UP
2-17	PURITY ADJUSTMENT
2-17	MASTER G2 ADJUSTMENT
2-17	CONVERGENCE ADJUSTMENT
2-18	VERTICAL-TILT WEDGE ADJUSTMENT
2-18	HORIZONTAL-TILT WEDGE ADJUSTMENT
2-18	UNUSUAL TILT CASE
2-18	IMPROVING CRT CORNER PURITY
2-18	MODIFICATION
	CABLE TIES AND LEAD DRESS
2-19	19V/20V MODELS
2-20	25V MODELS
2-21	27V MODELS
2-22	32V MODELS
2-23	CRT GROUND
	DEGAUSSOR COIL
2-24	19V/20V MODELS
2-25	25V/27V MODELS
2-26	CRT REAR VIEW
2-27	WIRING DETAILS

GX CHASSIS

INTRODUCTION

The New GX series chassis has been developed for screen sizes that include 19" through 35" stereo and mono models. Variations of the chassis have also been developed for use in the commercial products. The concept of the GX chassis is to make one board for all models in a particular screen size. During the manufacturing process, the microprocessor will be programmed for the added features. Also additional plug in boards will be added to the chassis to accommodate the different features; Stereo, Mono, PIP etc.

The New GX series chassis features four I²C compatible IC's for all signal, sync and sweep processing. ICX2200 handles all of the audio/video, sync and sweep drive processing. IC6000 is the microprocessor and IC6001 is the memory. The keyboard and IR detector are tied directly to IC6000. IC2100 handles the vertical sweep.

ICX3431 is in the power supply. This is a switching type supply powered by the bridge rectifier circuit. At turn on, voltages for the vertical and video output circuit are derived from the sweep circuit.

The 9158301 module is used on the 19/20" sets. The 9158401 module is used on 25" sets w/o comb filter. The 9158501 module is used on 27" sets w/o comb filter. The 9161701 module is used on 32" sets. The 9161801 module is used on 35" sets. The 9162901 module is used on 27" sets w/comb filter and the 9163901 is used on 27" sets w/comb filter and flat crt. The CRT module is attached to the main module the same as found on previous chassis. The 9158801 jack pack assembly will be found on certain mono models. The 9159202 for private label or 03 for Zenith jack pack assembly will be found on MTS stereo models. The 9158901, jack pack assembly will be found on the low cost Stereo models. These jack packs contain not only the jacks themselves, but also the necessary circuitry for the features.

CUSTOMER MENU

The customer menus are displayed over video and appear at the left of the screen.

The color of the menu will vary depending on the "Level" of features. The level is set at the factory when the set is being manufactured.

Private Label sets are Level 0. Zenith is Level 1 and 2. The customer menu on private label sets will have a Dark Red background. Zenith level 1 sets will be in blue and Level 2 sets will be gray.

Each press of the menu key will toggle between the setup menu, video menu and on some models an audio menu, PIP menu and service menu.

Operation of the menus is simple. Press MENU to call up a menu. Then with the SELECT key bring up the item to be adjusted. The adjustment range of the item will be highlighted in white. Lastly, use the ADJUST key to make a change to the current setting. Always follow the "On Screen" instructions. Press ENTER or QUIT to exit the menu. If no key is pressed within 15 seconds, the on screen display will time out. (30 seconds for Parental Control Menu).

SERVICE MENU

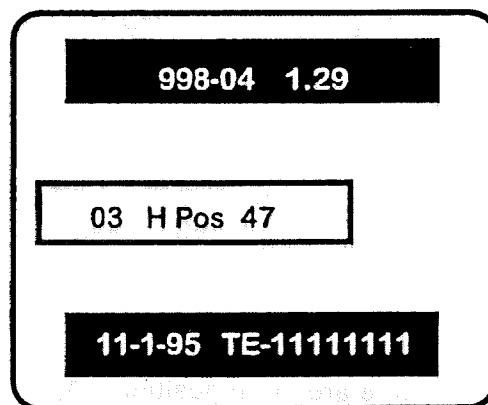
The Service Menu can be invoked by using the customer keyboard on the front of the set or by using the remote control.

Access to the Service Menu using the customer keyboard on the set:

Depress and hold down the menu key for 5 seconds (until the channel/time display disappears). Then depress the channel up and adjust right buttons simultaneously. This will bring up the service menu displaying item 3.

Access to the Service Menu using the remote control:

Press and hold the Menu key until the user menu display disappears, then press digit keys 9876 and then Enter. This will bring up item 3 of the service menu.



The black bar at the top indicates the part number of the software in the set. The black bar at the bottom has a date and a number. The date on the left indicates the date the module went through the factory. At the right is a number which indicates the module's test status.

When the Service menu comes up, it will always come up on the third item H Pos. Use the SELECT key to toggle through all of the adjustments.

00 F MODE (Factory Mode) Use the Select key to select item #00, which is the first item in the Service menu, the Factory Mode. This item is used by the factory when the module is being tested. In the field, this item should always be left "Off". 0 is "Off"!

When the factory mode is Off, only the first seven items in the service menu can be brought up. When the factory mode is set to 1, all 39 menu items will be available. Also they will come on the screen one at a time at the top left of the screen. The black bars at the top and bottom of the screen, will not be shown.

If the factory mode is "On", a double — line will appear at the top of the Customer Set Up menu. On other menus a number corresponding to the setting of a highlighted item will be shown. This is a quick way a technician can tell that the factory mode is on. Other unusual things may also happen when the factory mode is "On". The AC power on feature is always enabled regardless of the setting of "AC On" in the service menu. So the set will automatically come on when AC is applied.

When the factory mode is "On", the service menu can be accessed by pressing simultaneously the RIGHT ADJ. and CHANNEL UP buttons on the front of the set. Otherwise the hand control must be used to reenter the service menu to turn the factory mode off. The factory mode can also be turned off by setting the clock, or running the Auto Program feature in the customer Set Up menu.

01 Pre Px This is used to store the customer menu adjustments in the nonvolatile memory of the EAROM. The selections are Custom/Presets. Settings for Contrast, Brightness, Color, tint and start volume are stored in this manner. 0 is custom and 1 is Preset stored.

02 V Pos moves the On Screen Displays vertically. The range is from 0 to 31. Default setting is 10.

03 H POS Moves the On Screen Displays horizontally. The range is from 0 to 75. Default setting is 44.

04 Level There are three positions. 0, 1 and 2. The three different positions are used at the factory to program the module for the correct features. In order to change the level when replacing a main module in the field, temporarily short pins 3 and 4 together on connector 4G9 on the main module. Then use the Adjust button to change the level. Connector 4G9 is located on the left hand side of the module.



Be careful! If the wrong pins are shorted, the module can be damaged!

Level 0 is used for Private Label sets. In the private label mode the IR code is 21 or 121.

Level 1 and 2 is used for Zenith. In the Zenith label mode the IR code is 01 or 101.

Feature Level Summary

"LEVEL 0" Private Label

- Red Menus (with borders, italics)
- Auto Channel Set
- Set Channels
- Clock Set
- Caption/Text
- Languages (Trilingual)
- Sleep Timer

"LEVEL 1" LowEnd Zenith

- Blue Menus (with borders, italics)
- Auto Program
- Ch Add/Del
- Clock Set
- On/Off Timer
- Caption/Text
- Languages (Trilingual)
- Sleep Timer

"LEVEL 2" HighEnd Zenith

- Gray Menus (with borders, italics)
- ICONs
- Auto Program
- Ch Add/Del/Surf
- Channel Labels
- Clock Set
- On/Off Timer
- Parental Control
- Caption/Text
- Languages (Trilingual)
- AutoDemo
- Channel Surf
- Sleep Timer

BE SURE TO REMOVE THE JUMPER AFTER THE LEVEL HAS BEEN SET

05 Band There are eight positions. 0 is Broadcast fixed, 1 is CATV afc, 2 is HRC afc, 3 is ICC afc, 4 is Broadcast afc, 5 is CATV fixed, 6 is HRC fixed, 7 is ICC fixed.

06 AC On There are two positions; 0 is off and 1 is AC On. In the on position the set will turn on and off when AC power is applied. *F*

07 C.Phase (Caption Phase) It determines whether or not captioning will be received. It has a range of 00 to 254. Default setting is 80.

08 C.Srch (Caption Search) The range is 0 to 1. Default setting is 1.

09 C.LINE (Caption Line) The range is 0 to 32. Default setting is 17.

10 Rf Bpf (Rf Bandpass) The range is 0 to 1. Default setting is 0.

11 3.58 T This is the 3.58 MHz trap. The range is 0 to 1. Default setting is 0.

12 RF Brt (RF Brightness) This sets the subbrightness of the customer control for brightness in the RF mode. The range is from 0 through 63. Default setting is 20.

13 Ax Brt (Auxiliary Brightness) This sets the subbrightness of the customer control for brightness in the AUX mode. The range is from 0 through 63. Default setting is 20.

14 MaxCon (Maximum Contrast) This sets the adjustment range of the customer control for contrast. The range is from 0 to 63. Default setting is 63.

GX CHASSIS

15 VPhase (Vertical Phase) The range is from 0 to 7. Default setting is 0.

16 Hphase (Horizontal Phase) The range is from 0 to 31. Default setting is 16.

17 AudLvl (Audio Level) This sets the gain for the Low Cost stereo and MTS Stereo. The range is from 0 to 63. Default setting is 46.

18 AudAdj (Audio Adjust) This set the balance between the right and left channel. The range is from 0 to 63. Default setting is 63. This item is not to be field adjusted.

19 RF Agc The range is from 0 to 63. Default setting is 40. Tune in the weakest channel and adjust for a snow free picture.

20 H Afc There are two settings 0 and 1. Default setting is usually 0.

21 WhComp (White Compression) there are two settings 0 and 1. Default setting is 1.

22 60hzSw (60 Hertz Switched) The range is 0 to 3. Default setting is generally set to 2. *FACT*

23 PifVco (PIF Voltage Controlled Oscillator) The range is 0 to 127. Default setting is 63.

24 R Cut The range is 0 to 254. Default setting is 0.

25 G Cut The range is 0 to 254. Default setting is 0.

26 B Cut The range is 0 to 254. Default setting is 0.

27 G Gain The range is 0 to 254. Default setting is 75.

28 B Gain The range is 0 to 254. Default setting is 75.

29 PipRas* (Picture in Picture Raster) The range is 0 to 254. Default setting is 1.

30 Pip Sw* (Picture in Picture Switch Delay) The range is 0 to 15. Default setting is 11.

31 PipLuD* (Picture in Picture Luminance Delay) The range is 0 to 7. Default setting is 3.

32 In LEV* (Input Level) The range is 0 to 15. Default setting is 9.

33 St Vco* (Stereo Voltage Controlled Oscillator) The range is 0 to 63. Default setting is 24.

34 SapVco* (Second Audio Program Voltage Controlled Oscillator) The range is from 0 to 15. Default setting is 6.

35 SapLpf* (Second Audio Program Low Pass Filter) The range is 0 to 15. Default setting is 8.

36 St Lpf* (Stereo Low Pass Filter) The range is from 0 to 63. Default setting is 24.

37 Spectr* This is high frequency separation. The range is from 0 to 63. Default setting is 42.

38 WideBa* This is low frequency separation. The range is from 0 to 63. Default setting is 30.

* When changing PIP module or MTS modules in the field, these items must be adjusted.

GX CHASSIS

SERVICE MENU

GENERAL SETTINGS

	ITEM	RANGE	DEFAULT SETTINGS
00	Fact Mode	01	0
01	Pre Px	01	1
02	V Pos	031	10
03	H Pos	075	44
04	Level	02	1*
05	Band	07	1**
06	AC On	01	0

VIDEO PROCESSOR SETTINGS

07	C.Phase	0254	80
08	C.Srch	01	1
09	C.Line	032	17
10	Rf Bpf	01	0
11	3.58T	01	0
12	RF Brt	063	20
13	Ax Brt	063	20
14	MaxCon	063	63
15	VPhase	07	0
16	HPhase	0-31	16
17	Aud Lvl	0-63	46
18	Aud Adj	0-63	63***
19	RF Agc	0-63	40
20	H Afc	0-1	1
21	WhComp	0	1
22	60hzSw	0-3	0
23	PifVco	0-127	63
24	R Cut	0-254	0
25	G Cut	0-254	0
26	B Cut	0-254	0
27	G Gain	0-254	75
28	B Gain	0-254	75

PIP SETTINGS

29	PipRas	0-254	1
30	PipSw	0-15	11
31	PipLuD	0-7	3

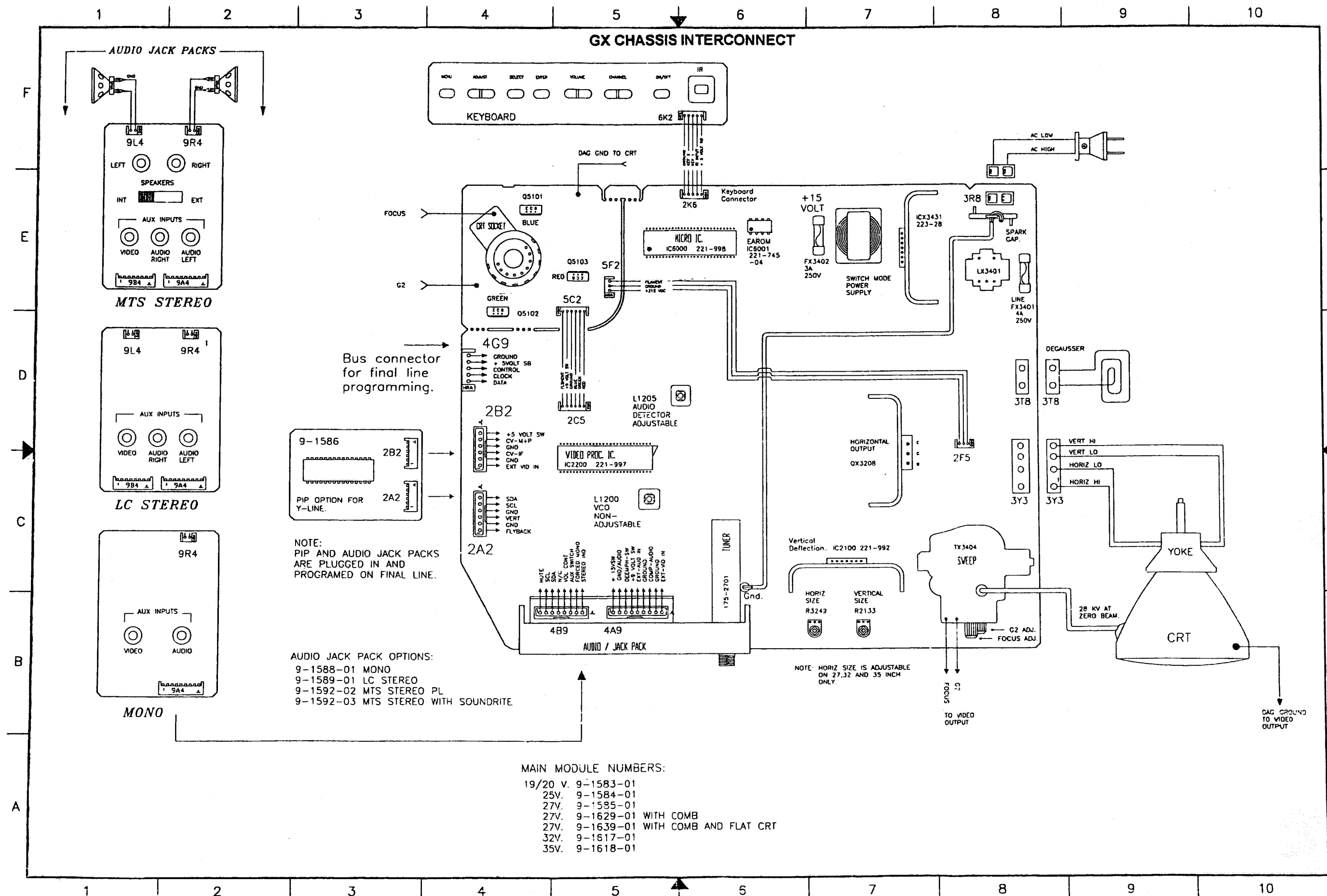
AUDIO SETTINGS

32	In Lev	0-15	9
33	St Vco	0-63	24
34	SapVco	0-15	6
35	SapLpf	0-15	8
36	St Lpf	0-63	24
37	Spectr	0-63	42
38	WideBa	0-63	30

*Set this to the level (Bar Code Data

**This setting depends upon input signal.

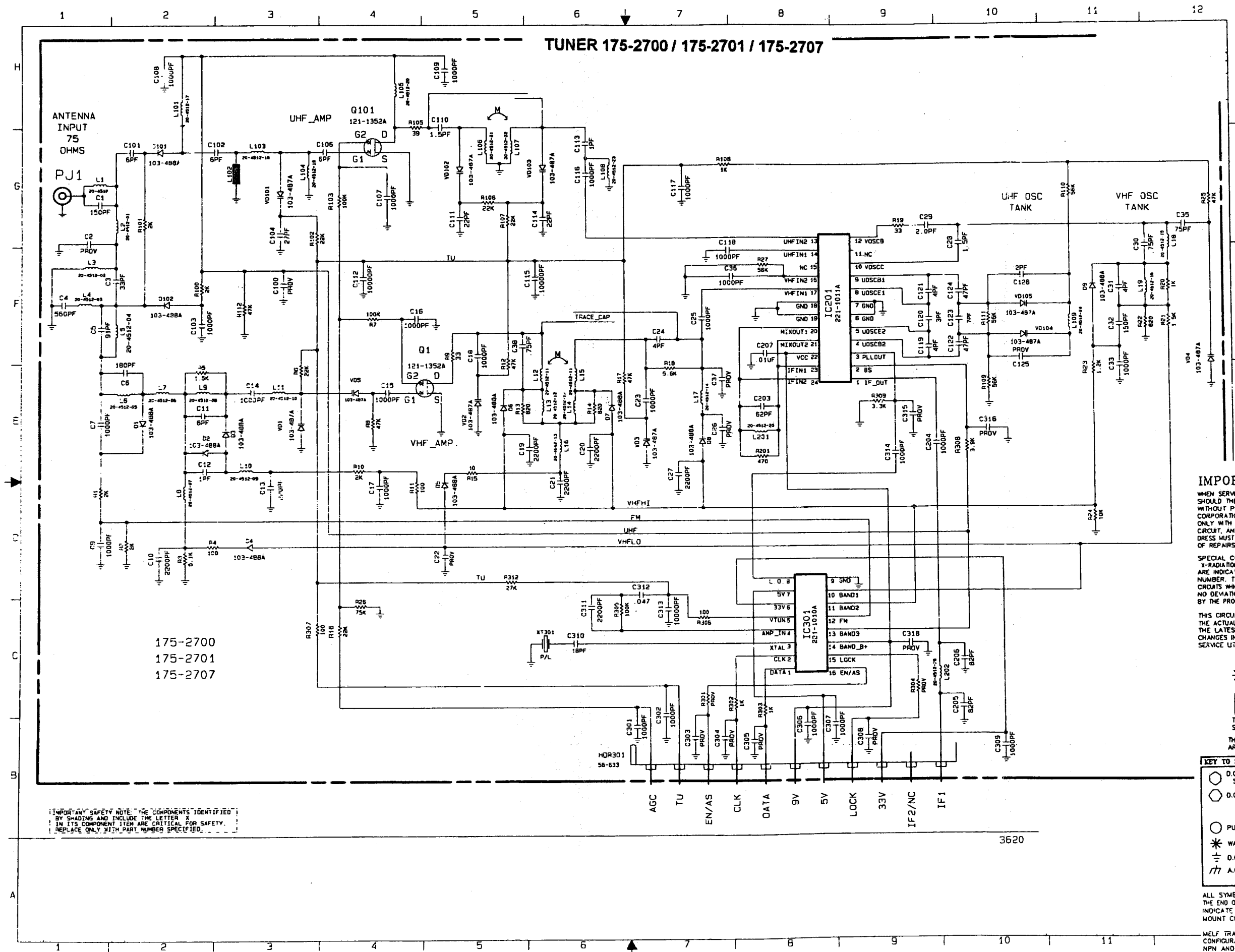
***This item is not to be field adjusted.



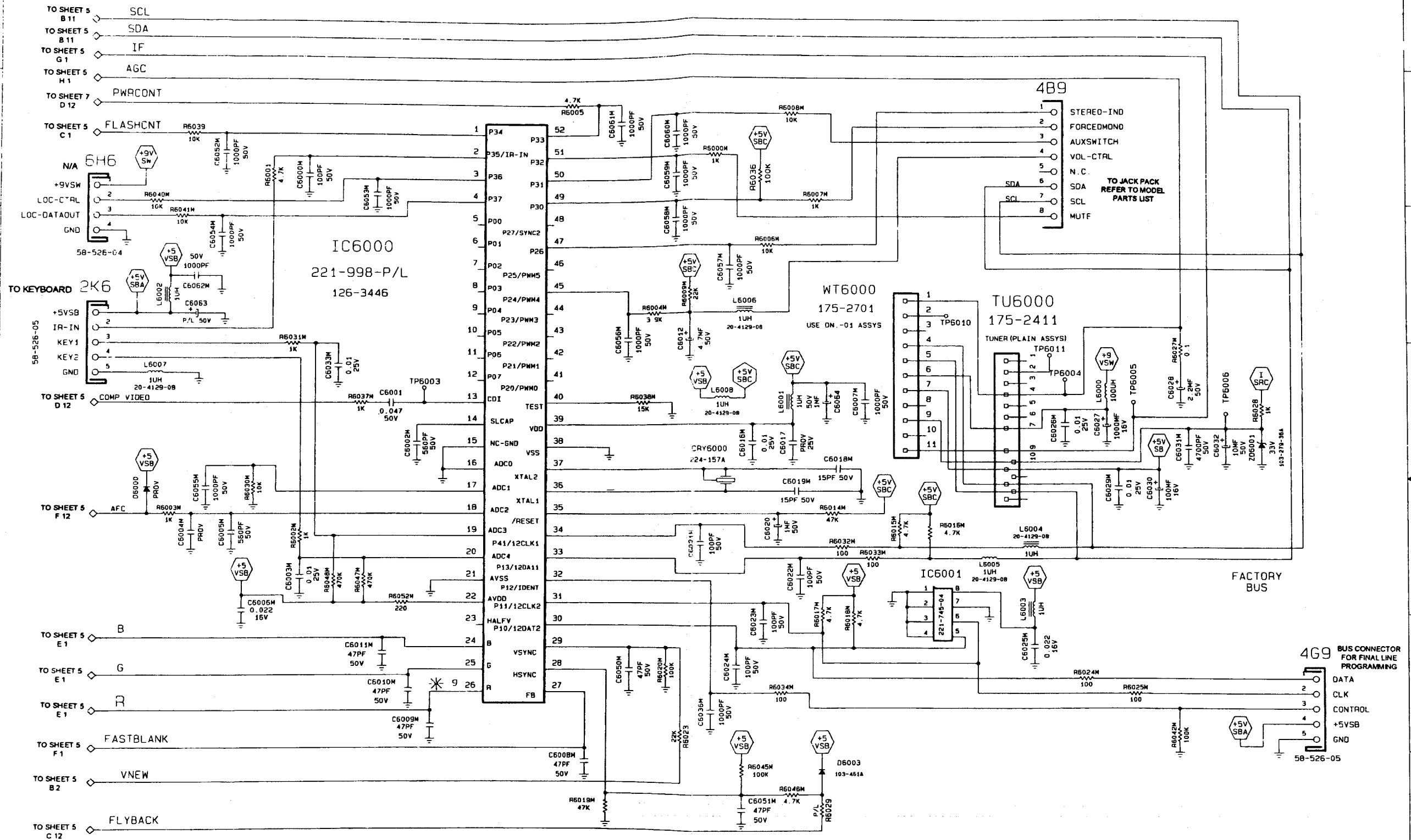
TRANSISTOR DC VOLTAGES

INTEGRATED CIRCUIT DC VOLTAGES

MAIN BOARD				MAIN BOARD		MAIN BOARD		MAIN BOARD		PIP		JACKPACK		JACKPACK		JACKPACK		JACKPACK	
Q	E	B	C	IC 2100		ICX 2200 (CONT.)		IC 8000 (CONT.)		9-1588 SERIES		9-1587 & 88 SERIES		9-1589 SERIES		9-1592 SERIES		9-1592 SERIES	
800	0.00	0.00	15.0	Pin #		Pin #		Pin #		IC 2000		IC 801		IC 1601		IC 1400		IC 1402	
1203	5.00	5.00	9.0	1	10.00	46	9.00	25	0.00	Pin #		Pin #		19	8.00	Pin #		Pin #	
1204	4.00	5.00	9.0	2	23.00	47	5.00	26	0.00	1	1.00	1	9.00	20	4.00	1	4.00	1	4.00
1205	0.50	1.00	8.0	3	8.00	48	9.00	27	0.00	2	1.00	2	9.00	21	0.00	2	4.00	2	4.00
2000	3.00	4.00	5.0	4	7.00	49	8.00	28	1.00	3	2.00	3	9.00	22	0.00	3	4.00	3	0.00
2200	0.00	0.40	8.0	5	NC	50	8.00	29	4.00	4	2.00	4	8.00	23	3.00	4	4.00	4	4.00
2201	5.00	4.00	0.0	6	0.00	51	0.00	30	5.00	5	5.00	5	0.00	24	3.00	5	4.00	5	5.00
2202	3.00	2.00	9.0	7	4.00	52	0.00	31	5.00	6	2.00	6	0.00			6	4.00	6	4.00
2203	2.00	3.00	9.0	8	5.00	53	3.00	32	NC	7	2.00	7	0.00			7	2.00	7	4.00
2204	2.00	1.00	0.0	9	4.00	54	4.00	33	2.00	8	5.00	8	0.00	IC 1602		8	2.00	8	0.00
2205	2.00	1.00	0.0	10	23.00	55	3.00	34	2.00	9	NC			Pin #		9	0.00	9	0.00
2206	2.00	1.00	0.0	11	0.00	56	3.00	35	5.00	10	NC					10	0.00	10	0.00
2207	3.00	2.20	0.0					36	NC	11	NC	JACKPACK		1	4.00	11	1.00	11	4.00
2208	1.00	2.00	5.0					37	NC	12	NC	9-1589 SERIES		2	NC	12	1.00	12	0.00
2209	1.00	2.00	5.0	ICX 2200		ICX 3431		38	NC	13	NC			3	6.00	13	4.00	13	0.00
2210	1.00	2.00	5.0	Pin #		Pin #		39	5.00	14	5.00	IC 802		4	0.00	14	4.00	14	4.00
X3201	17.00	17.00	0.0	1	4.00	1	0.00	40	NC	15	NC	Pin #		5	6.00	15	6.00	15	4.00
3202	0.40	1.00	9.0	2	4.00	2	0.30	41	NC	16	NC	1	13.00	6	12.00	16	5.00	16	9.00
3203	3.00	4.00	16.0	3	8.00	3	157.00	42	NC	17	NC	2	5.00	7	4.00	17	4.00		
3206	0.00	0.40	12.0	4	3.00	4	0.07	43	NC	18	NC	3	1.00	8	0.02	18	3.00		
X3208	0.00	0.00	125.0	5	8.00	5	0.00	44	NC	19	NC	4	0.00	9	4.00	19	4.00		
X3401	0.00	0.07	0.5	6	0.00			45	0.00	20	NC	5	0.00	10	7.00	20	4.00		
3403	15.00	14.00	15.0	7	2.00			46	NC	21	NC	6	0.00	11	1.00	21	9.00		
3404	15.00	14.00	15.0	8	2.00	IC 3441		47	NC	22	NC	7	0.00	12	1.00	22	4.00		
5101	1.50	2.00	231.0	9	9.00	Pin #		48	NC	23	NC	8	0.00	13	4.00	23	0.00		
5102	1.40	2.00	238.0	10	5.00	IN	9.00	49	NC	24	NC			14	NC	24	4.00		
5103	1.50	2.00	232.0	11	6.00	OUT	5.00	50	5.00	25	NC					25	4.00		
5104	0.00	1.00	0.0	12	5.00			51	NC	26	NC	IC 803		IC 1603		26	4.00		
				13	0.00			52	5.00	27	NC	Pin #		Pin #		27	4.00		
				14	0.00	IC 3442				28	NC	1	13.00			28	2.00		
JACKPACK				15	5.00	Pin #				29	2.00	2	7.00	IN	12.00	29	4.00		
9-1589 SERIES				16	5.00	IN	9.00	IC 6001		30	0.00	3	1.00	OUT	8.00	30	4.00		
802	0.00	0.02	0.00	17	5.00	OUT	5.00	Pin #		31	2.00	4	0.00			31	4.00		
803	0.00	0.02	0.00	18	4.00			1	0.00	32	2.00	5	0.00			32	2.00		
1601	5.00	4.00	0.00	19	1.00			2	0.00	33	2.00	6	0.00			33	2.00		
1602	0.00	1.00	0.02	20	1.00	IC 6000		3	0.00	34	1.00	7	0.00			34	4.00		
				21	1.00	Pin #		4	0.00	35	0.00	8	0.00	JACKPACK		35	4.00		
				22	4.00	1	5.00	5	5.00	36	2.00			9-1592 SERIES		36	0.00		
JACKPACK				23	9.00	2	5.00	6	5.00	37	4.00					37	4.00		
9-1592 SERIES				24	1.00	3	5.00	7	0.00	38	1.00	IC 1601		IC 804		38	4.00		
800	0.00	0.00	15.0	25	7.00	4	NC	8	5.00	39	3.00	Pin #		Pin #		39	4.00		
1400	0.00	1.00	0.0	26	9.00	5	NC			40	4.00	1	5.00	1	1.00	40	4.00		
1401	0.00	0.00	9.0	27	2.00	6	NC			41	3.00	2	3.00	2	0.00	41	4.00		
				28	2.00	7	NC			42	3.00	3	3.00	3	15.00	42	4.00		
				29	2.00	8	NC			43	5.00	4	3.00	4	0.00				
				30	1.00	9	NC			44	2.00	5	5.00	5	0.00	IC 1401			
				31	0.00	10	NC			45	3.00	6	0.00	6	1.00	Pin #			
				32	1.00	11	NC			46	2.00	7	1.00	7	8.00	1	4.00		
				33	7.00	12	NC			47	1.00	8	5.00	8	0.00	2	4.00		
				34	0.00	13	2.00			48	0.00	9	5.00	9	15.00	3	4.00		
				35	0.00	14	0.50			49	2.00	10	5.00	10	7.00	4	4.00		
				36	2.00	15	NC			50	5.00	11	4.00			5	9.00		
				37	3.00	16	NC			51	3.00	12	4.00			6	9.00		
				38	0.00	17	NC			52	3.00	13	3.00			7	0.00		
				39	3.00	18	3.00			53	2.00	14	3.00			8	4.00		
				40	NC	19	5.00			54	2.00	15	3.00			9	4.00		
				41	0.00	20	5.00			55	NC	16	4.00			10	4.00		
				42	0.00	21	NC			56	NC	17	4.00			11	4.00		
				43	0.00	22	5.00					18	3.00			12	0.00		
				44	0.00	23	NC									13	0.00		
				45	2.00	24	0.00									14	9.00		



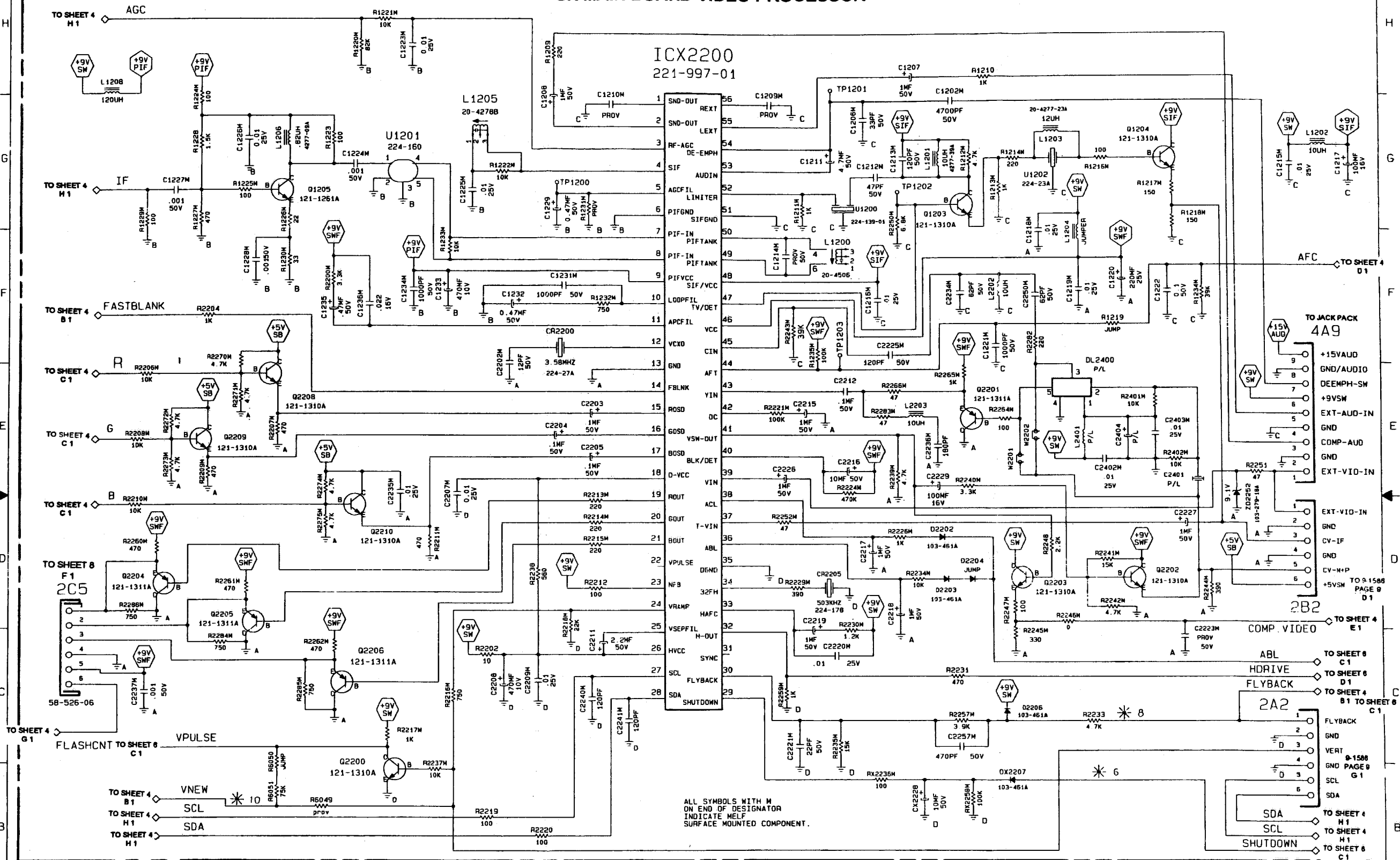
GX MAIN BOARD-TUNING CONTROL



IMPORTANT SAFETY NOTE THE COMPONENTS IDENTIFIED BY SHADING AND INCLUDE THE LETTER X IN ITS COMPONENT ITEM ARE CRITICAL FOR SAFETY. REPLACE ONLY WITH PART NUMBER SPECIFIED.

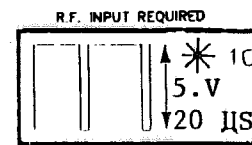
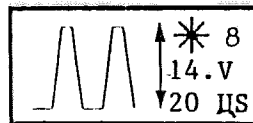
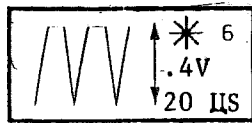


GX MAIN BOARD-VIDEO PROCESSOR

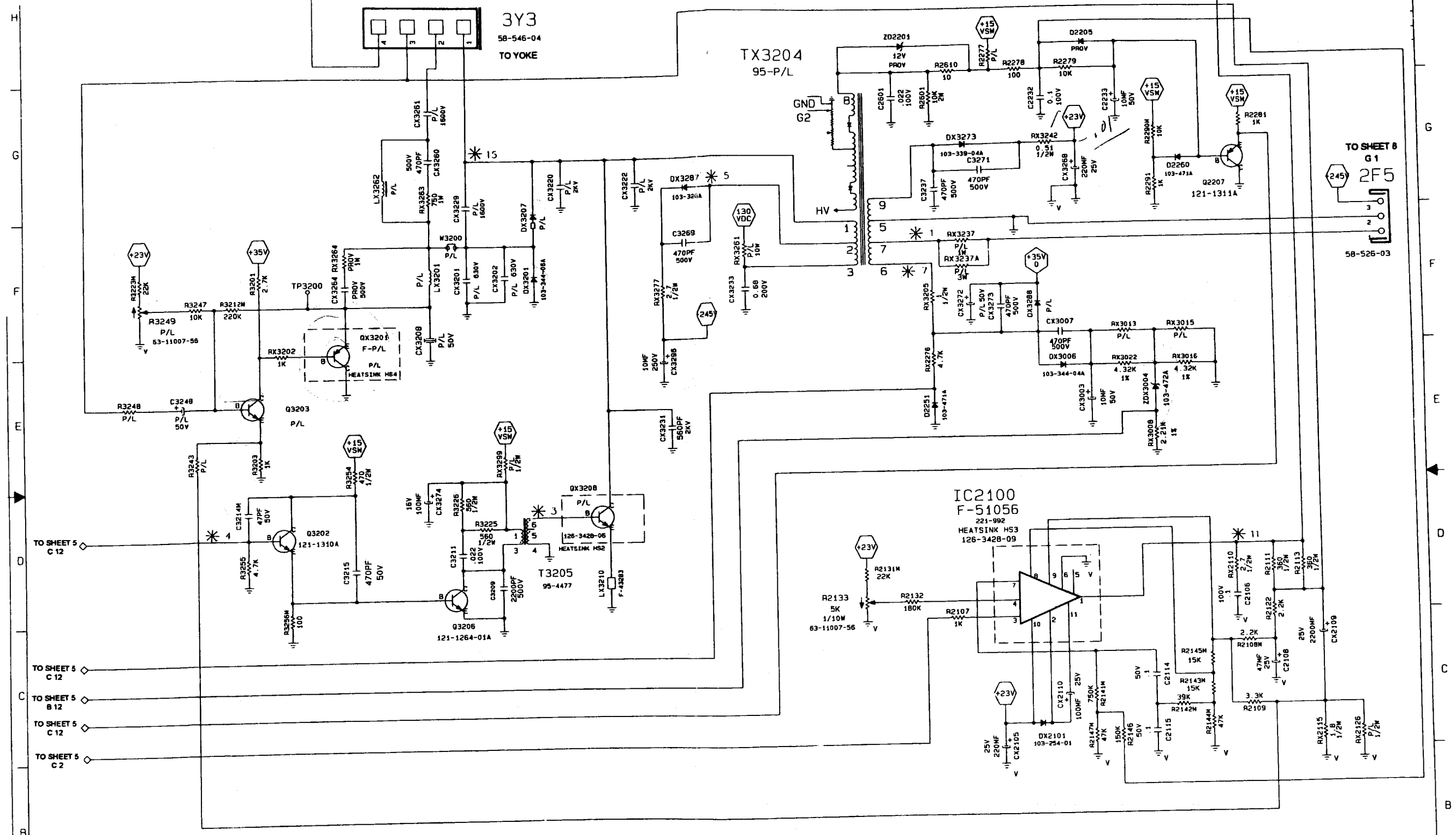


IMPORTANT SAFETY NOTE: THE COMPONENTS IDENTIFIED BY SHADING AND INCLUDE THE LETTER "X" IN ITS COMPONENT ITEM ARE CRITICAL FOR SAFETY. REPLACE ONLY WITH PART NUMBER SPECIFIED.

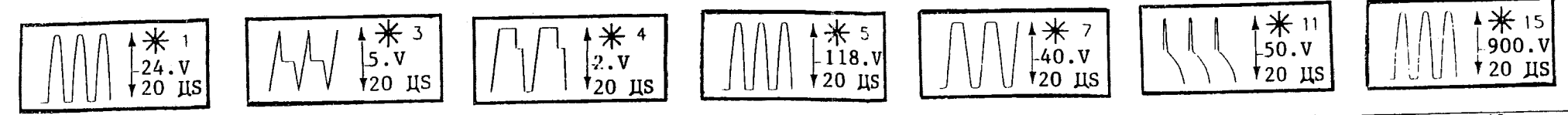
ALL SYMBOLS WITH M ON END OF DESIGNATOR INDICATE MELF SURFACE MOUNTED COMPONENT.



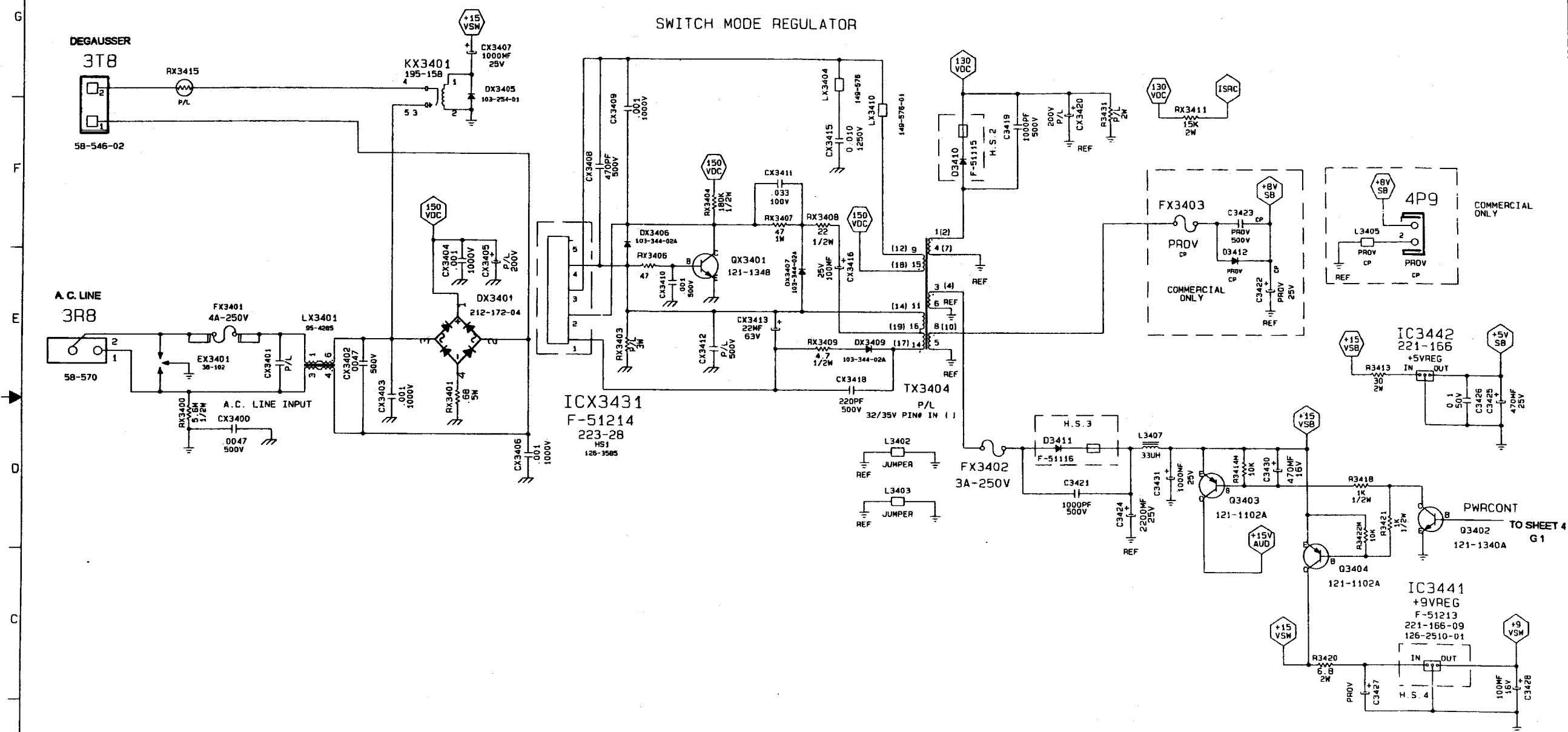
GX MAIN BOARD-SWEEP / S.M.P.S



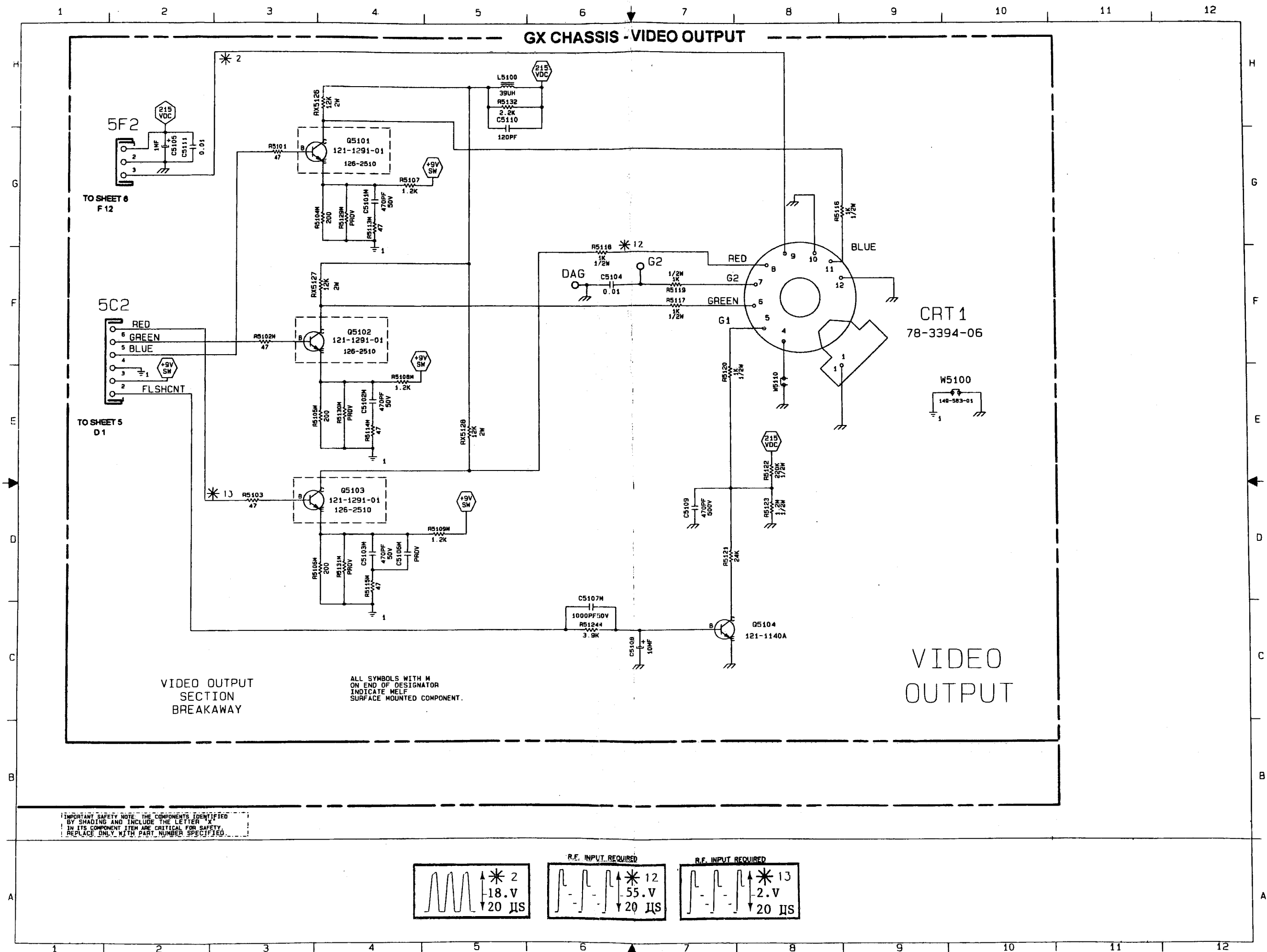
IMPORTANT SAFETY NOTE: THE COMPONENTS IDENTIFIED BY SHADING AND INCLUDING THE LETTER X IN ITS COMPONENT ITEM ARE CRITICAL FOR SAFETY. REPLACE ONLY WITH PART NUMBER SPECIFIED.

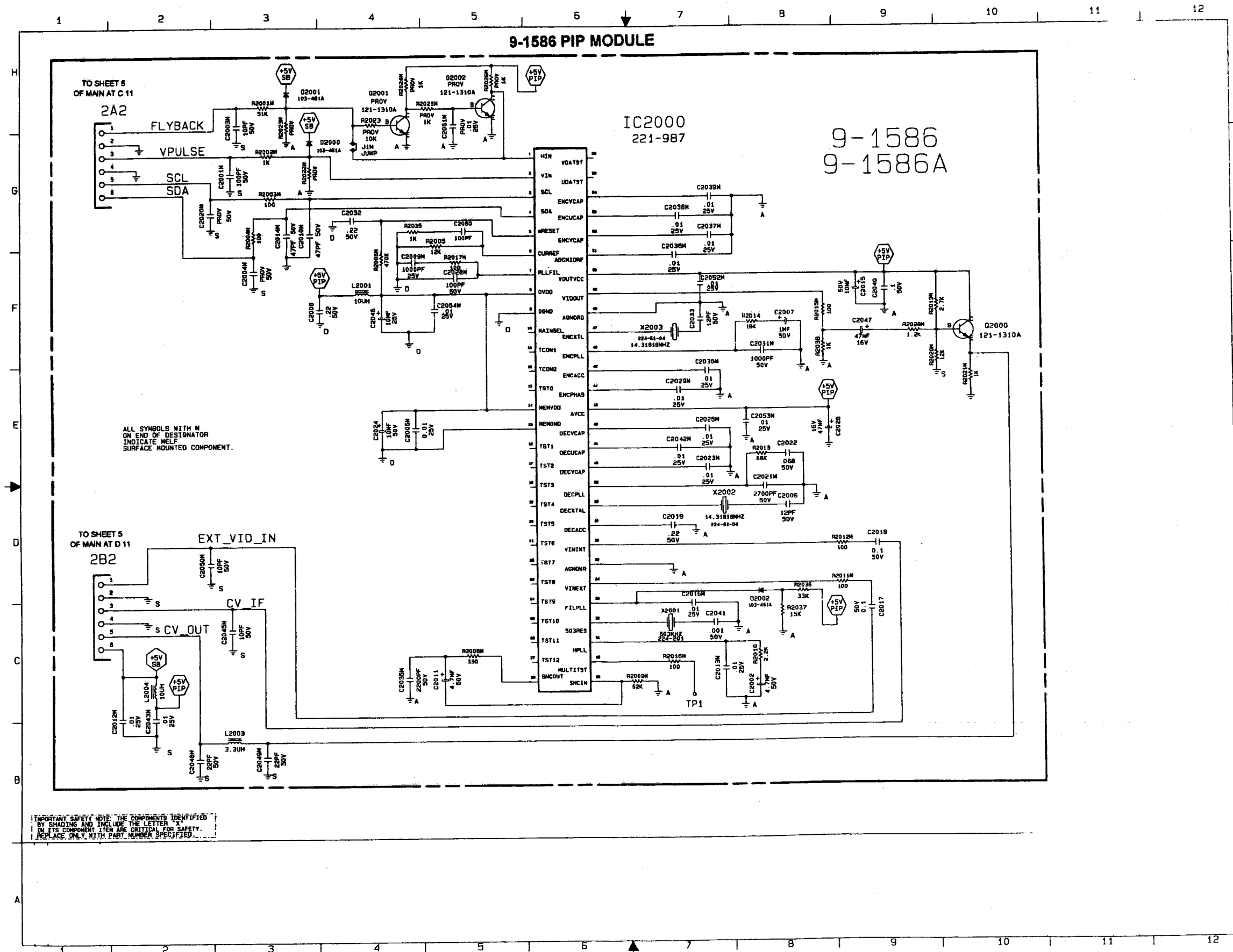


GX MAIN BOARD-SWITCH MODE REGULATOR

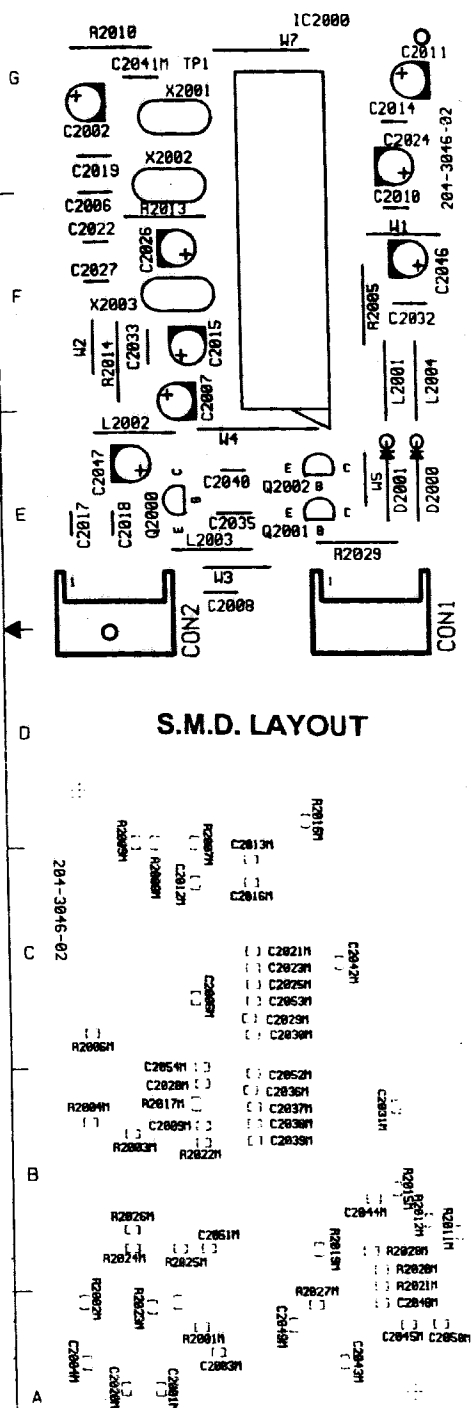


IMPORTANT SAFETY NOTE: THE COMPONENTS IDENTIFIED BY SHADING AND INCLUDE THE LETTER X IN ITS COMPONENT ITEM ARE CRITICAL FOR SAFETY. REPLACE ONLY WITH PART NUMBER SPECIFIED.

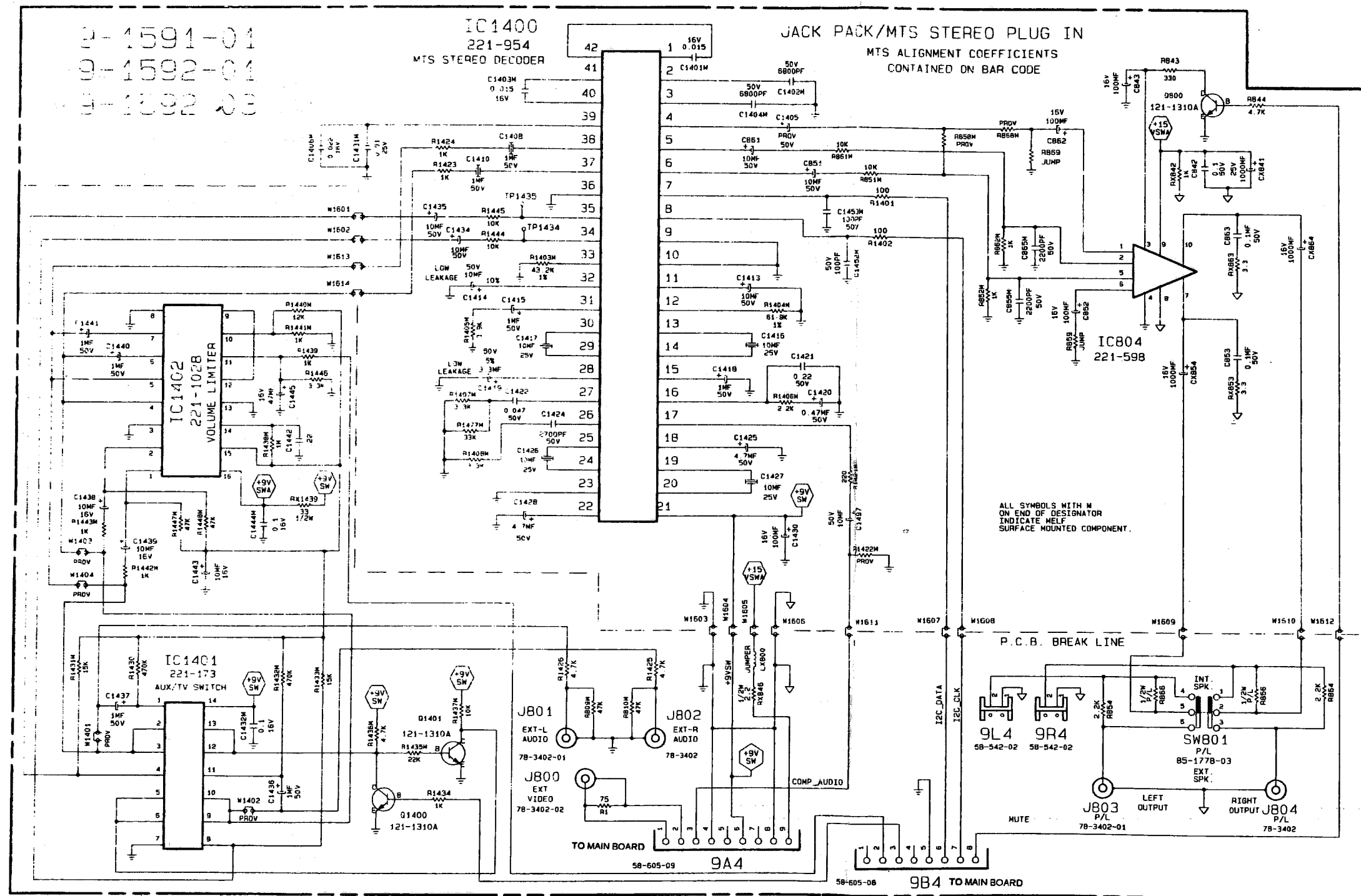




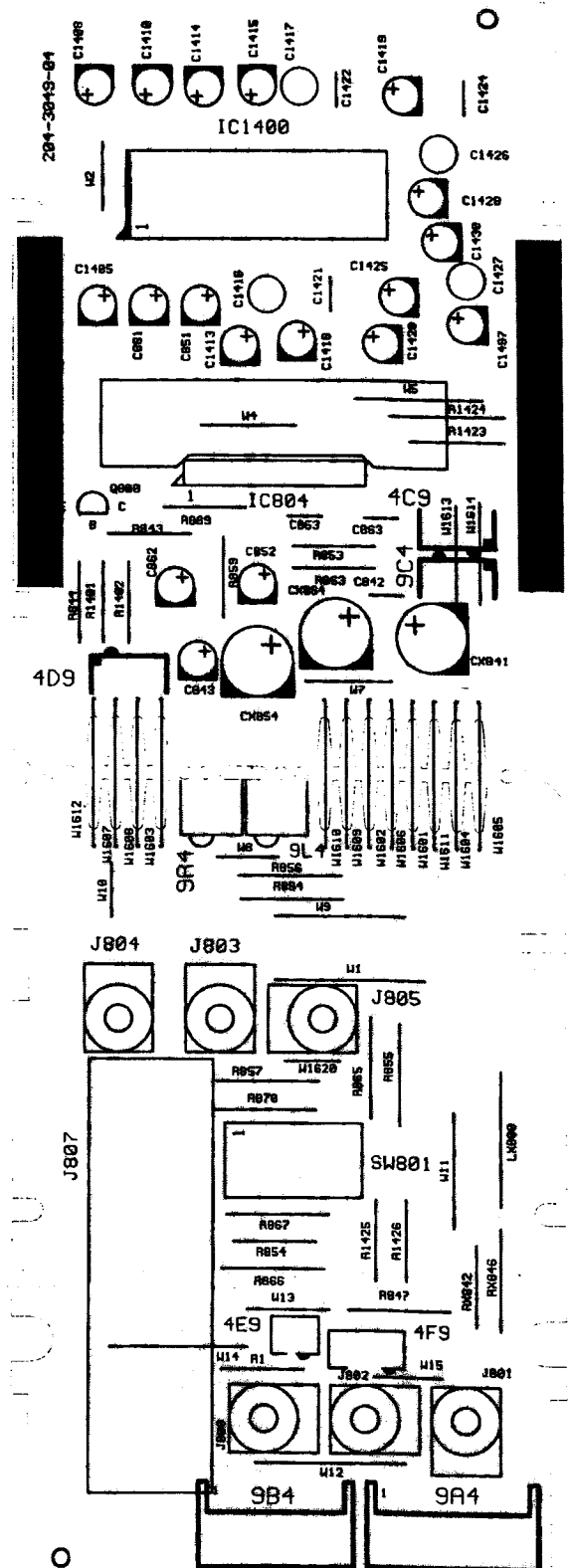
9-1586 PIP MODULE COMPONENT LAYOUT



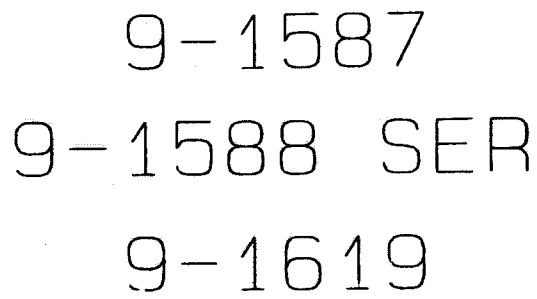
AUDIO MODULE / JACK PACK MTS STEREO 9-1591 / 9-1592 SERIES



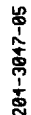
COMPONENT LAYOUT



AUDIO MODULE / JACK PACK MONO 9-1587 / 9-1588 / 9-1619 SERIES

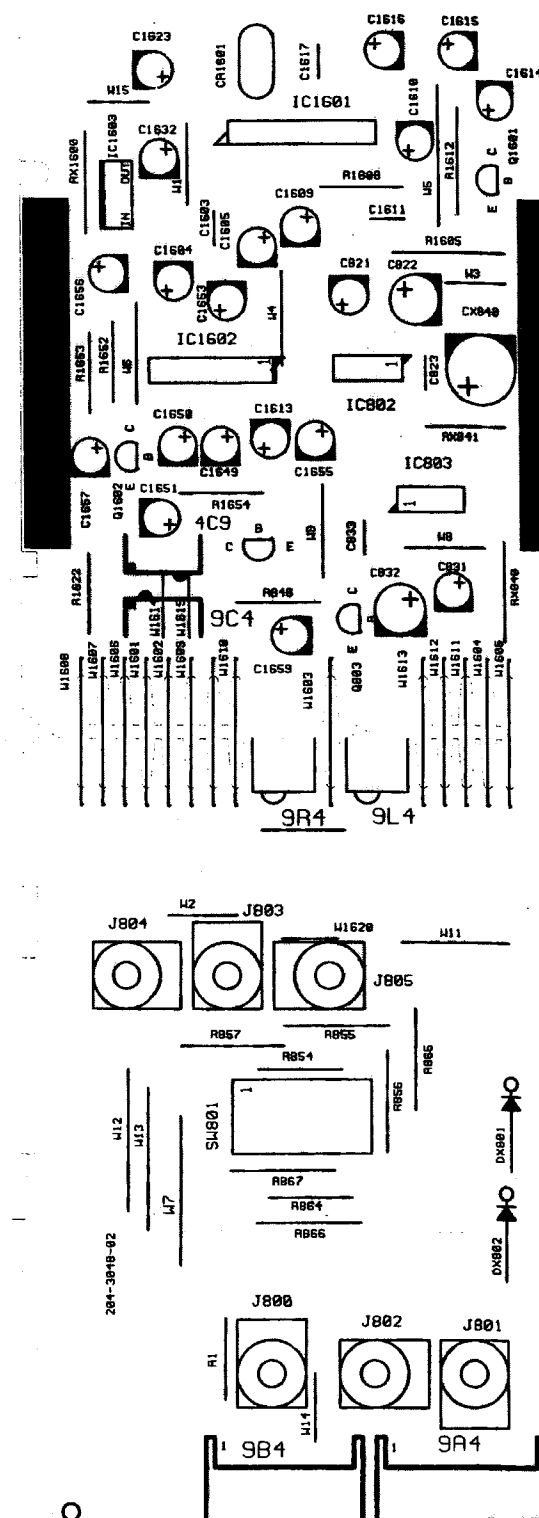
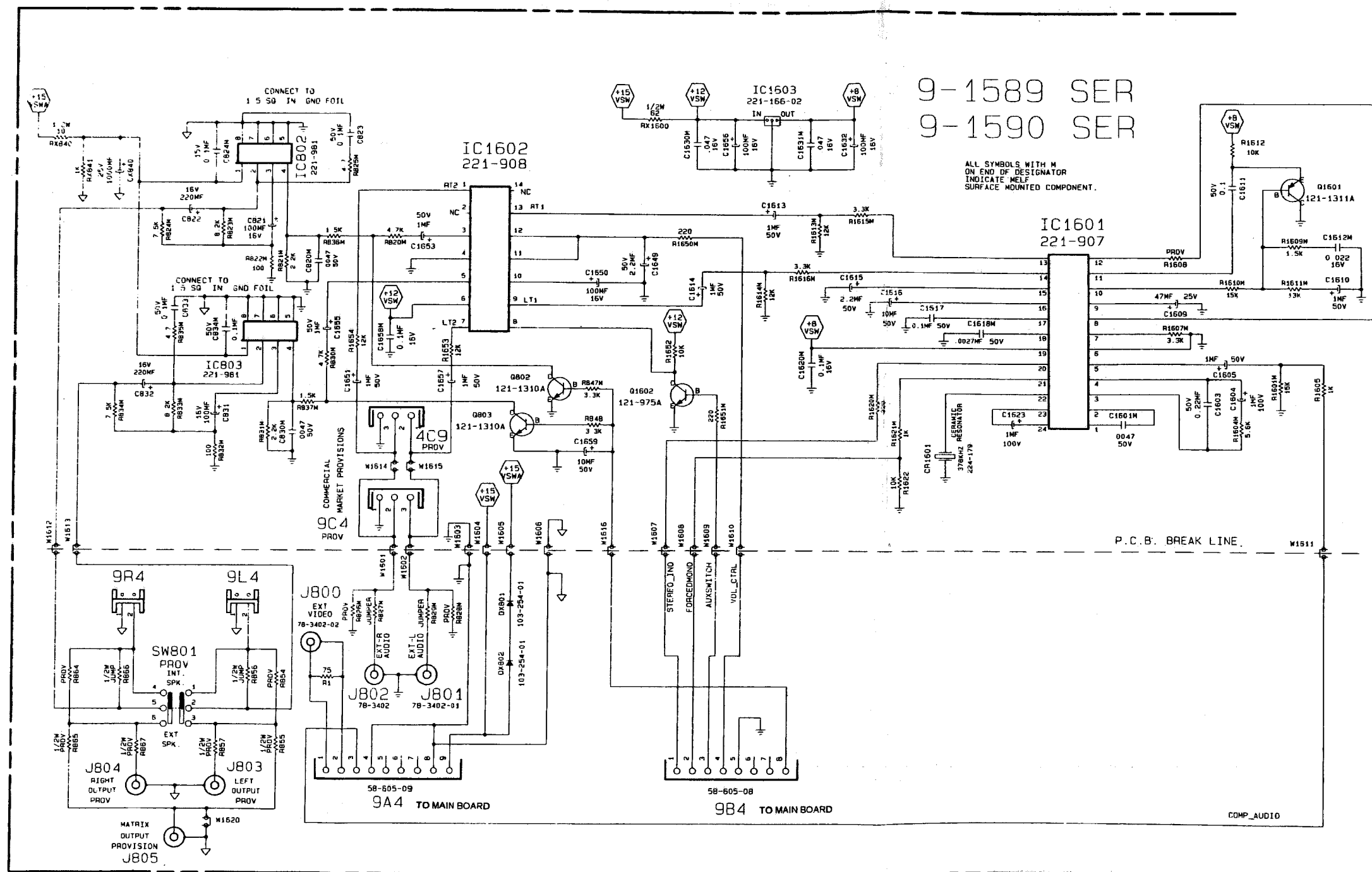


COMPONENT LAYOUT

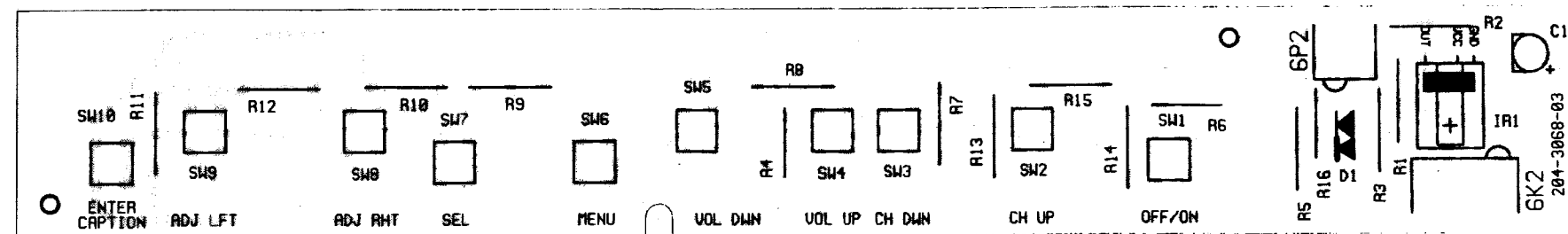
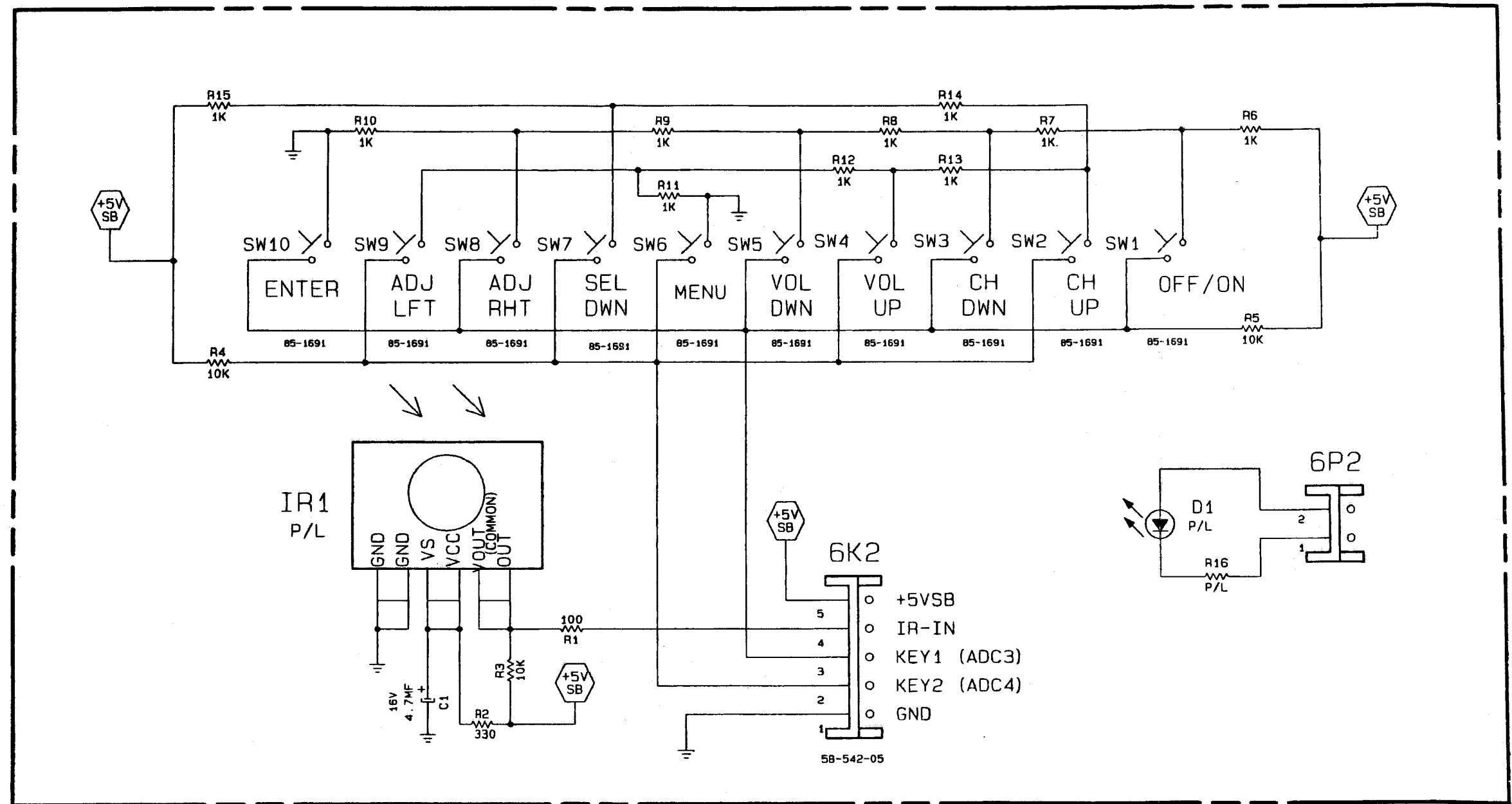


AUDIO MODULE / JACK PACK L.C STEREO 9-1589 / 9-1590 SERIES

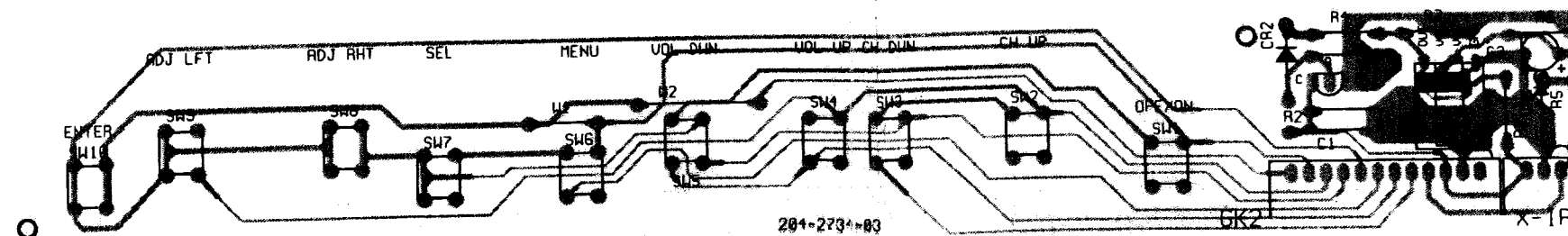
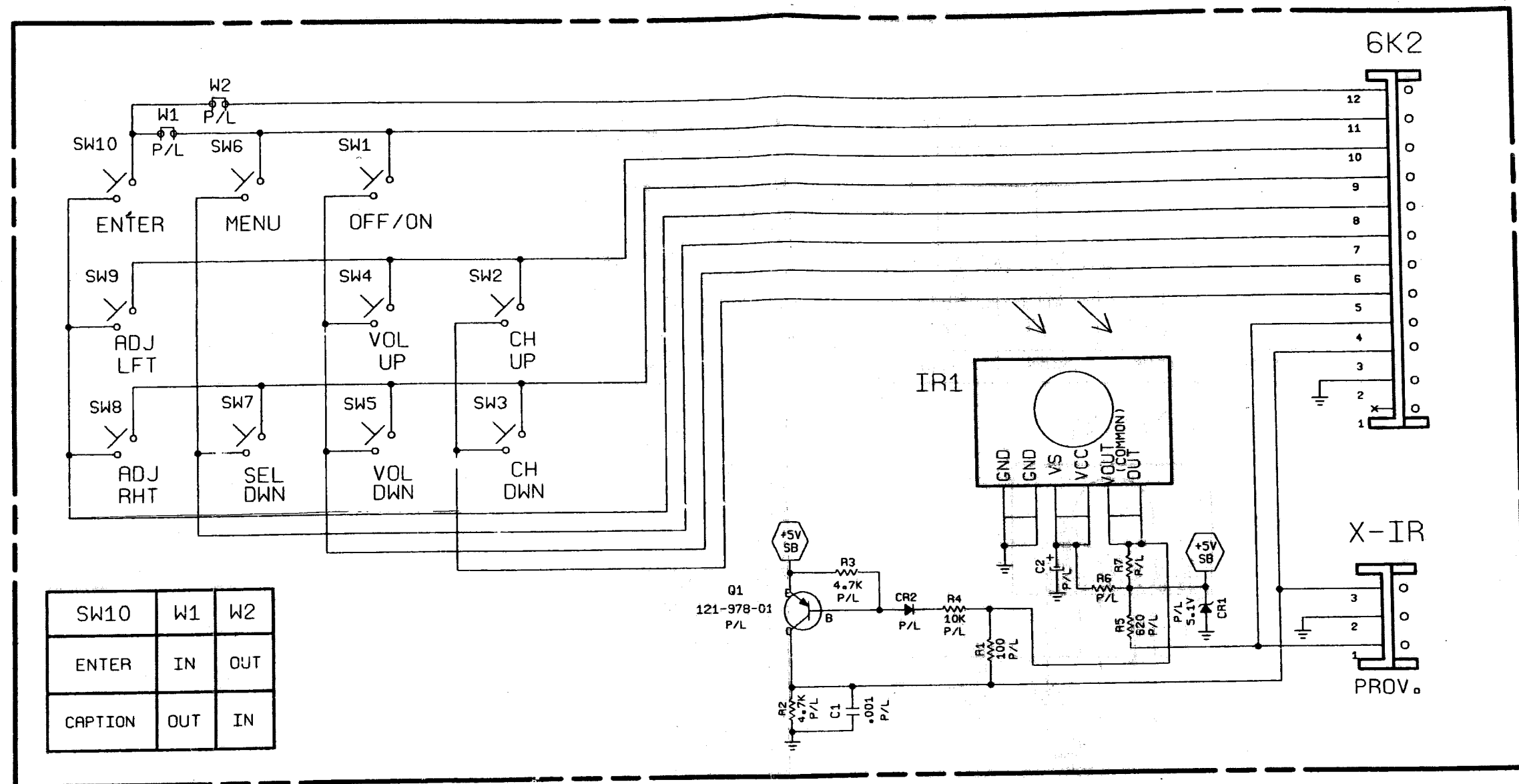
COMPONENT LAYOUT



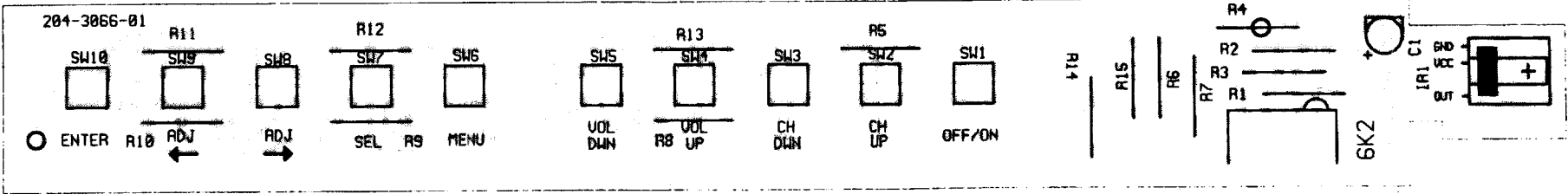
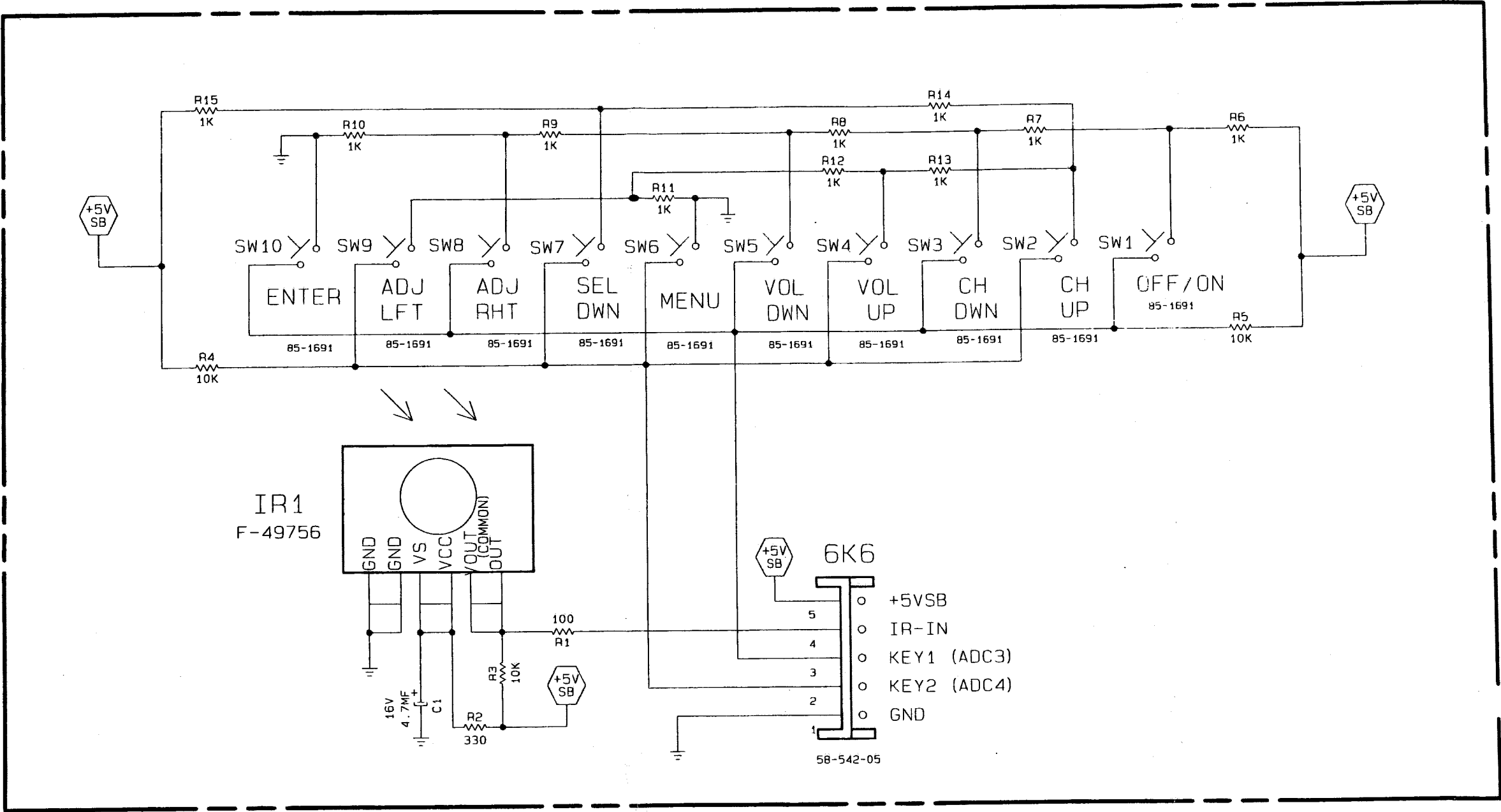
KEYBOARD SCHEMATIC & COMPONENT LAYOUT, REFER TO MODEL PARTS LIST.

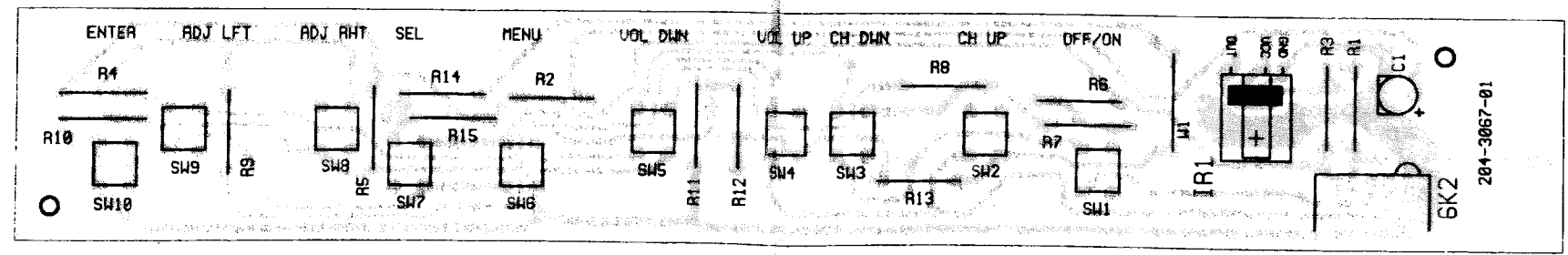
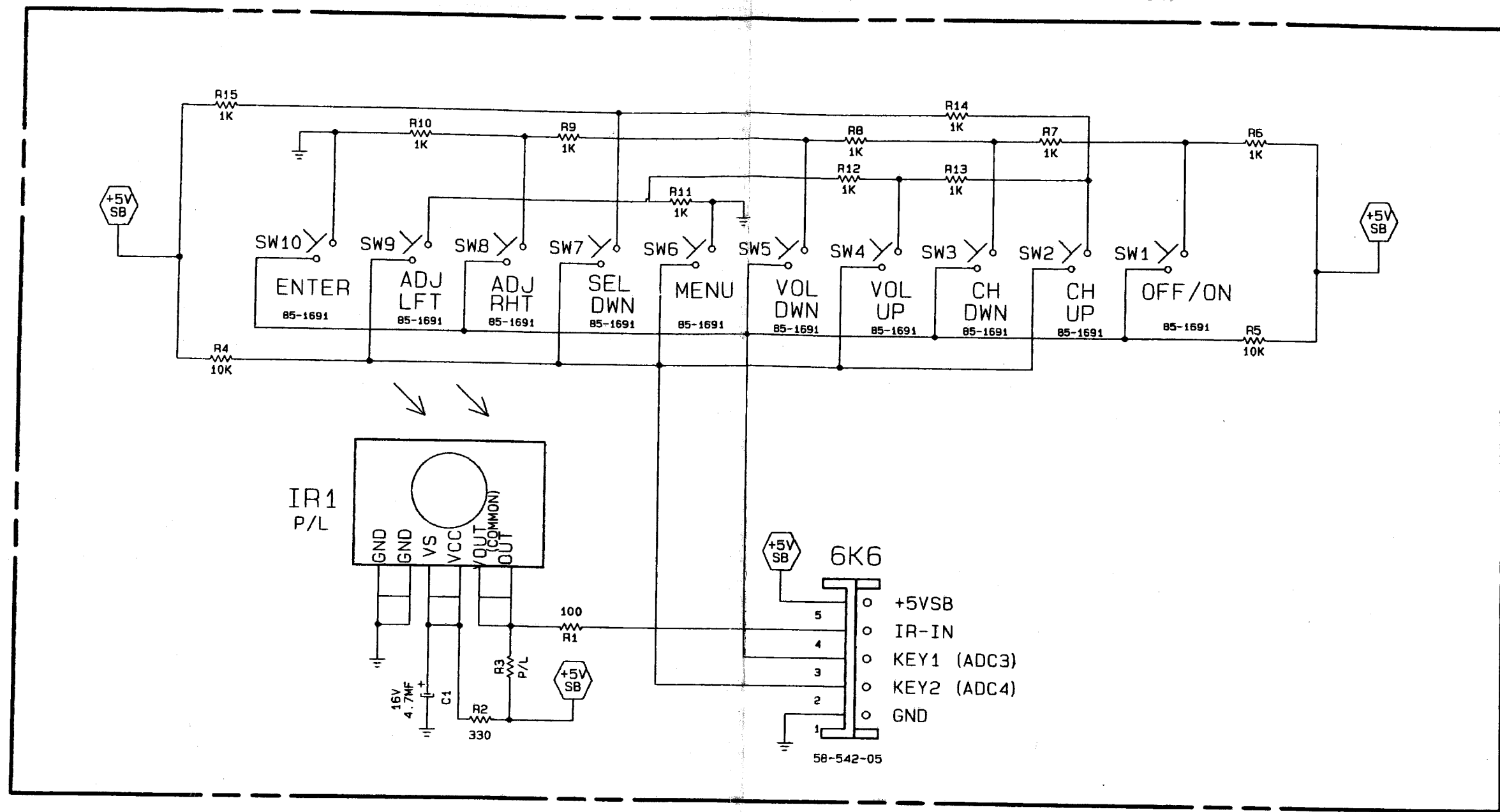


KEYBOARD SCHEMATIC & COMPONENT LAYOUT, REFER TO MODEL PARTS LIST.



KEYBOARD SCHEMATIC & COMPONENT LAYOUT, REFER TO MODEL PARTS LIST.





CM-148 / GX



CM-148 / GX

SERVICE MANUAL Y-LINE

**DIRECT VIEW
COLOR TV RECEIVER
GX CHASSIS
INCLUDES:**

**9-1583-01 (19/20V) OR
9-1584-01 (25V) OR
9-1585-01 (27V) W/O COMB FILTER OR
9-1617-01 (32V) OR
9-1618-01 (35V) OR
9-1629-01 (27V) W/ COMB FILTER OR
9-1639-01 (27V) W/ COMB FILTER & FLAT CRT**

COMPLIMENTED WITH AUDIO JACK ASSY:

**9-1588-01 (MONO) OR
9-1589-01 (LC STEREO) OR
9-1592-02 (MTS STEREO PL) OR
9-1592-03 (MTS STEREO)**

Published by Technical Publications

ZENITH ELECTRONICS CORPORATION □ 1000 MILWAUKEE AVENUE □ GLENVIEW, ILLINOIS 60025-2493

TABLE OF CONTENTS

	MODELS
4 - 1	SY1931SG
4 - 1	SY1949Y
4 - 1	SY1949YM
4 - 1	SY1951Y
4 - 1	SY1951YM
4 - 1	SY1953Y
4 - 1	SY1953YM
4 - 3	SY2031S
4 - 3	SY2031SM
4 - 3	SY2049DT
4 - 3	SY2049DTM
4 - 3	SY2049X
4 - 5	SY2053S
4 - 5	SY2053SM
4 - 5	SY2068DT
4 - 5	SY2068DTM
4 - 7	SY2500RK
4 - 7	SY2504BW
4 - 7	SY2518RK
4 - 10	SY2549S
4 - 10	SY2551S
4 - 10	SY2551SM
4 - 10	SY2568S
4 - 10	SY2568SM
4 - 12	SY2569X
4 - 12	SY2572DT
4 - 12	SY2572DTM
4 - 14	SY2722RK
4 - 14	SY2723BW
4 - 14	SY2728RK
4 - 14	SY2728RKM

TABLE OF CONTENTS (CONTINUED)

	MODELS (CONTINUED)
4 - 17	SY2751Y
4 - 17	SY2765S
4 - 17	SY2765SM
4 - 19	SY2768S
4 - 19	SY2768SM
4 - 19	SY2772DT
4 - 19	SY2772DTM
4 - 21	SY3272DT
4 - 21	SY3272DTM
4 - 21	SY3572DT
4 - 21	SY3572DTM
4 - 24	SY7249DT
4 - 24	SY7568S
4 - 24	SY7768S
4 - 24	SY7772DT
4 - 24	SY7949Y
	MODULES
4 - 28	9-1583-01 MAIN MODULE
4 - 28	9-1584 - 01 MAIN MODULE
4 - 28	9-1585-01 MAIN MODULE
4 - 45	9-1586-01 PIX-IN-PIX MODULE
4 - 47	9-1588-01 AUDIO MODULE (MONO)
4 - 47	9-1589-01 AUDIO MODULE (STEREO)
4 - 47	9-1592-03 AUDIO MODULE (STEREO)
4 - 53	9-1629-01 MAIN MODULE
4 - 53	9-1639-01 MAIN MODULE