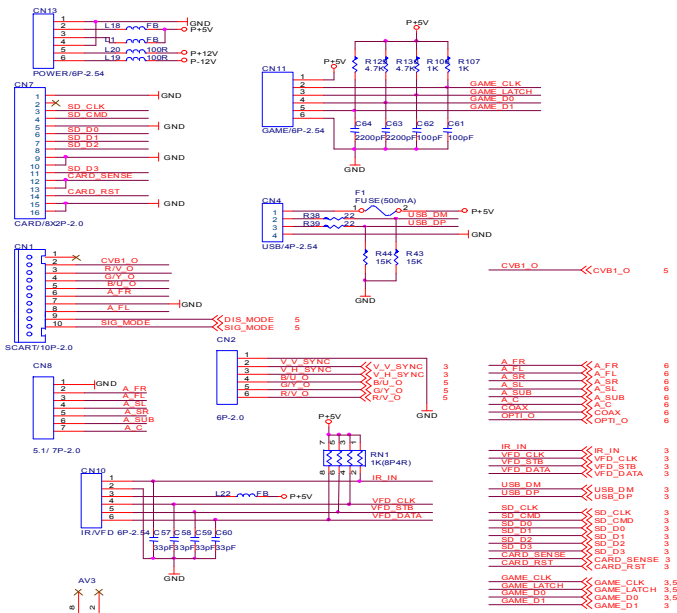




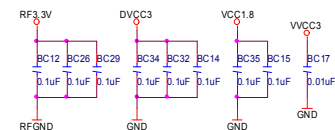
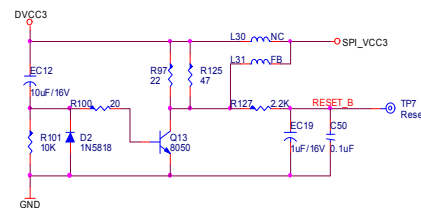
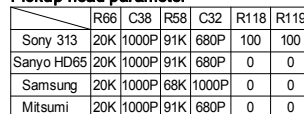
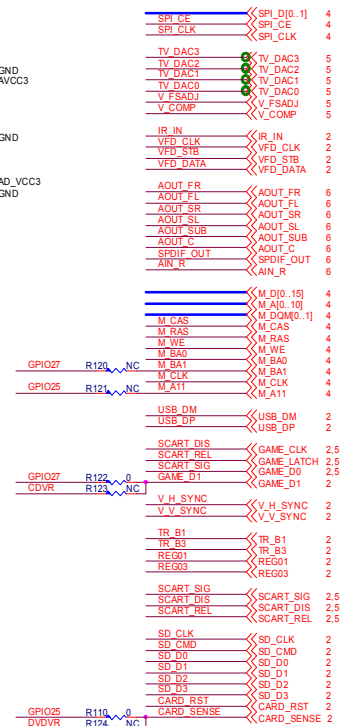
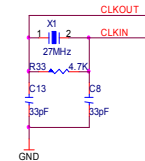
REPRODUCITOR DVD

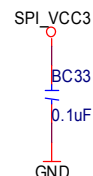
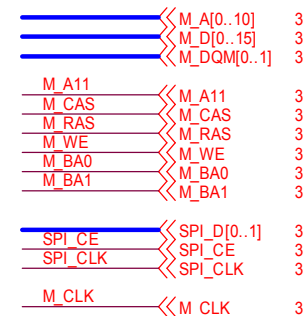
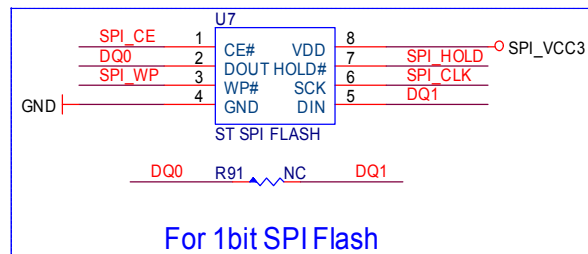
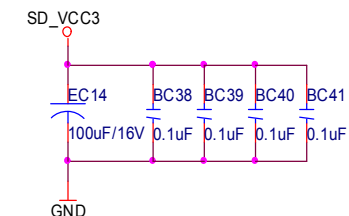
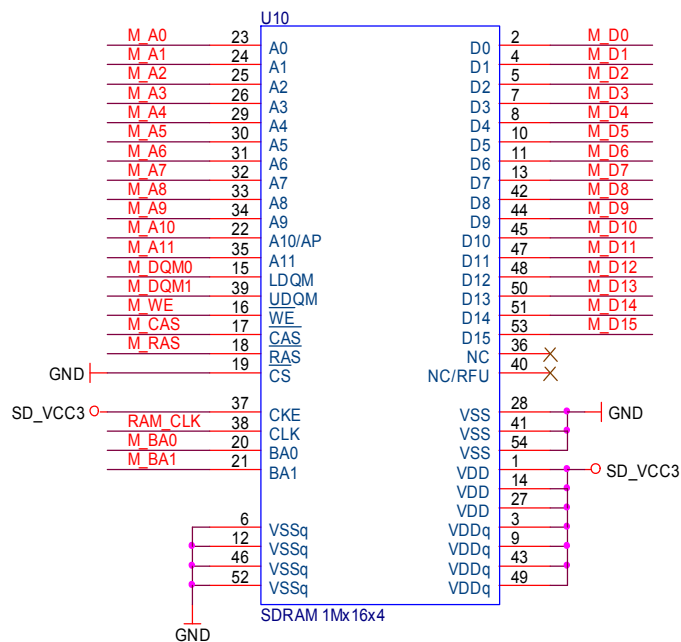
SERVICE MANUAL

DVD-K432



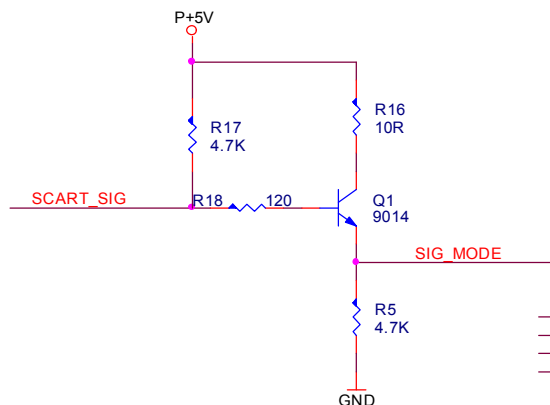
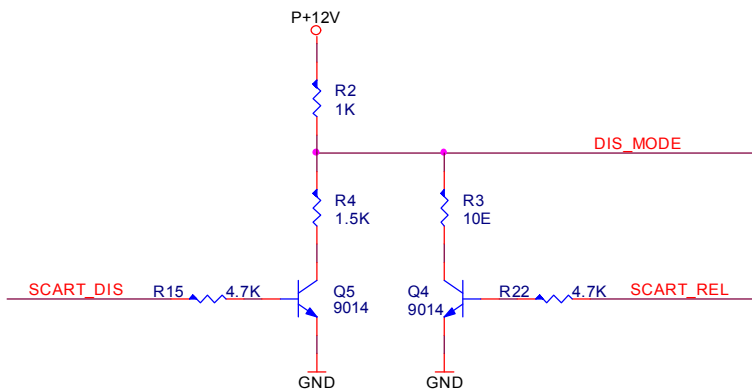
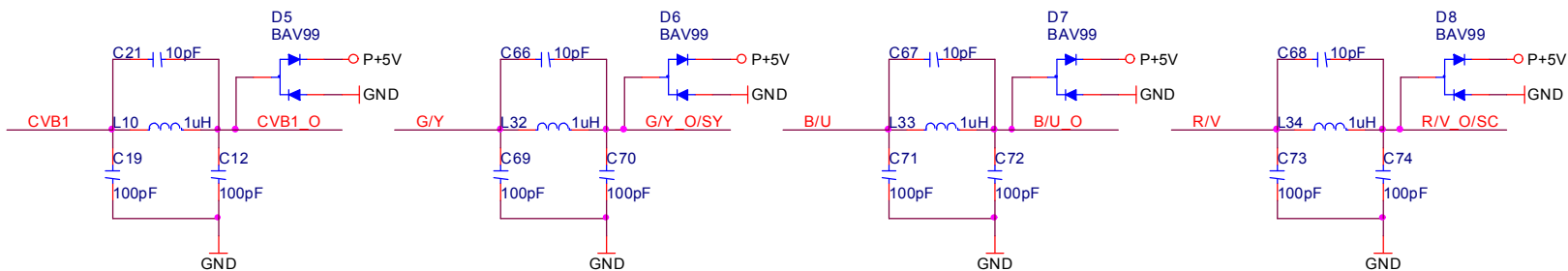
Title		POWER / CONNECTOR	
Size	Document Number	Rev	
Custom		C	
Date:	Sheet	2	of 7



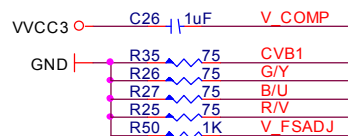


	2bit	1bit
R91	NC	0
R92	0	NC

Title			
SDRAM / SPI FLASH			
Size	Document Number		Rev
Custom			Ch
Date:	Sheet	4	of 7



CVB1	TV_DAC0	3
G/Y	TV_DAC1	3
B/U	TV_DAC2	3
R/V	TV_DAC3	3
V_FSADJ	V_FSADJ	3
V_COMP	V_COMP	3
CVB1_O	CVB1_O	2
G/Y_O	G/Y_O	2
R/V_O	R/V_O	2
B/U_O	B/U_O	2
SCART_SIG	SCART_SIG	2,3
SCART_DIS	SCART_DIS	2,3
SCART_REL	SCART_REL	2,3
SIG_MODE	SIG_MODE	2
DIS_MODE	DIS_MODE	2



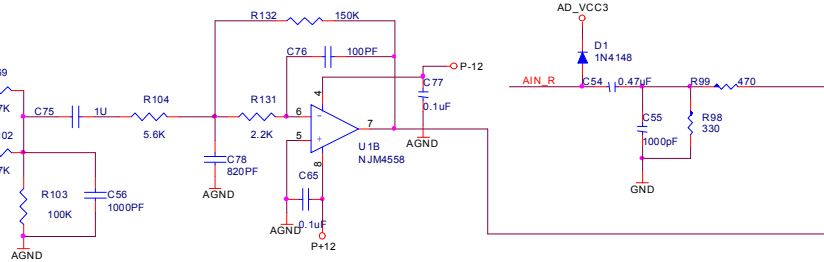
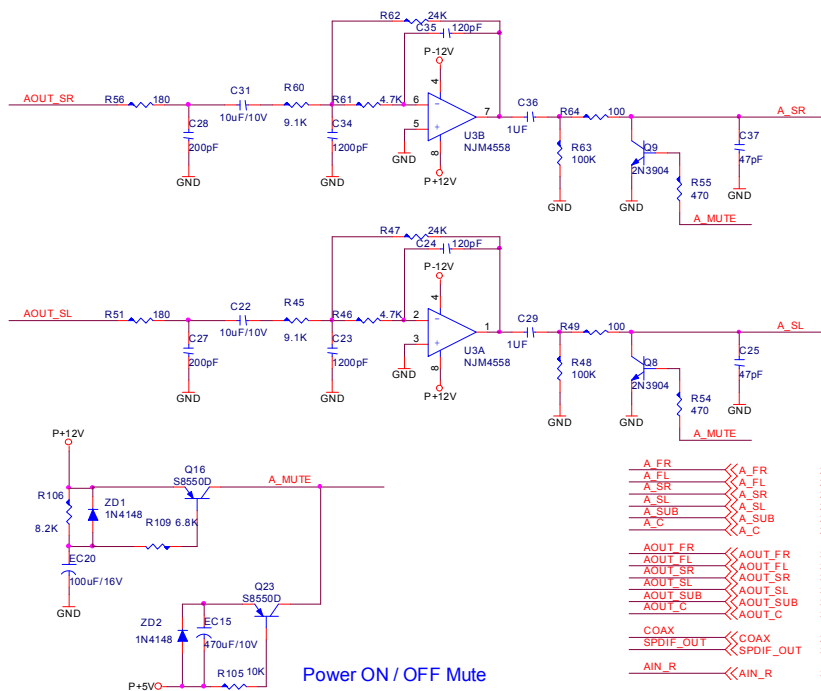
TV0	TV1	TV2	TV3
CVB	Y	Cb	Cr
CVB	Y(S-Video)	CVB	C(S-Video)
CVB	G	B	R

RELEASE_SCART	DISPLAY_MODE
0	Not RELEASE
1	RELEASE

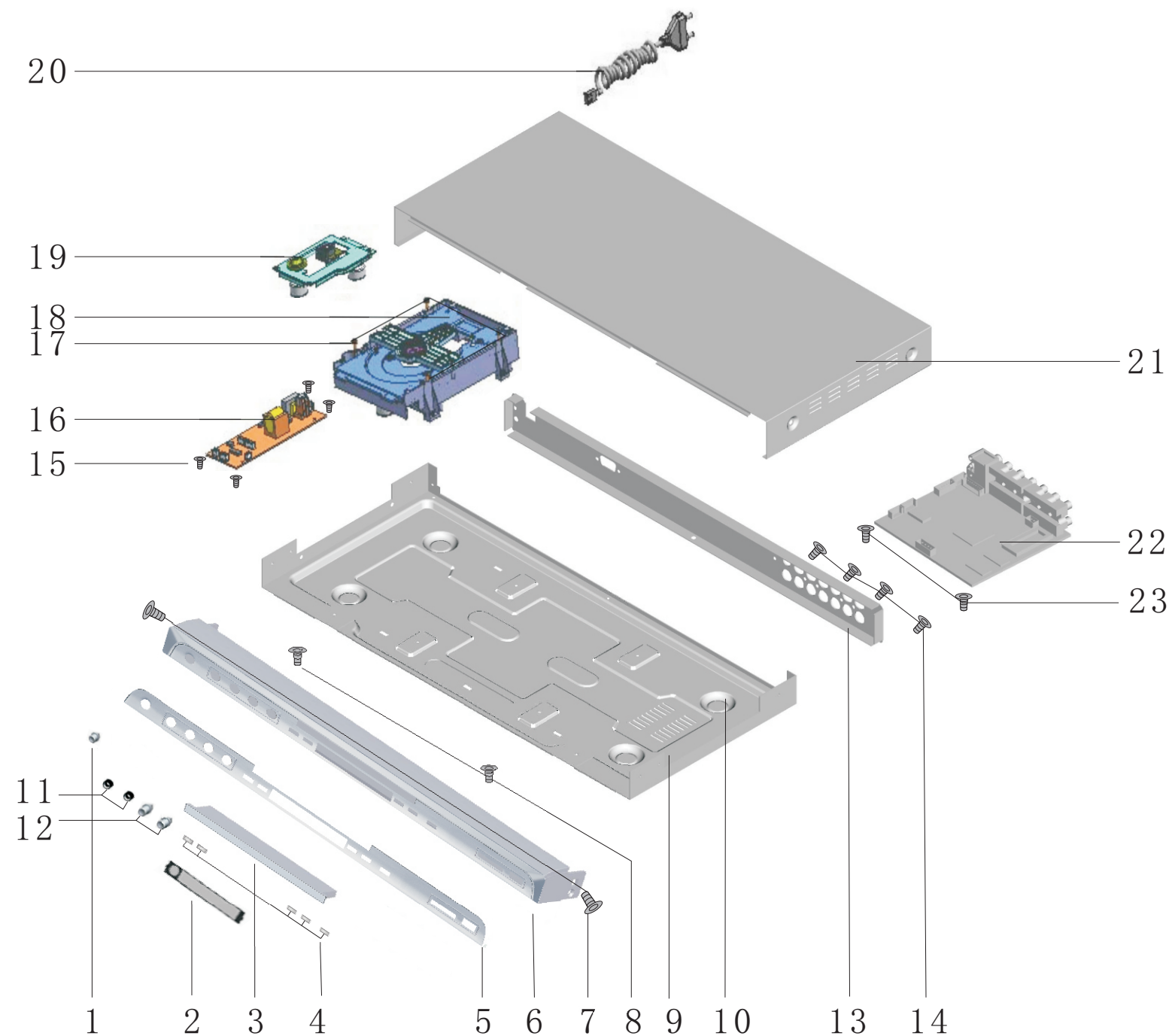
SCART_DISPLAY	DISPLAY_MODE
0	12V(9.5V~12V 4:3)
1	6V(5V~8V 16:9)

SCART_SIG	SIGNAL_MODE
0	0V(CVBS)
1	3V(RGB)

Title		
VIDEO		
Size	Document Number	Rev
Custom		CH
Date:	Sheet	5 of 7



Title				
AUDIO				
Size	Document Number			Rev
Custom				CH
Date:	Sheet		6	of 7



NO.	DECRPTION	SET
1	POWER BUTTON	1
2	DISPLAY LENS	1
3	CD DOOR	1
4	CONTROL BUTTON	1
5	DECORATIVE BORAD	1
6	PANEL FRAME	1
7	SCREW (BmH3*6)	2
8	SCREW (KW3*6)	2
9	BOTTOM CABINET	1
10	FOOT	3
11	MIC JACK	
12	MIC VOLUMEKONB	

NO.	DECRPTION	SET
13	BACK CABINET	1
14	SCREW (PA 3*8)	2
15	SCREW (BmH3*7)	3
16	POWER BOARD	1
17	SCREW (BmH3*6)	31
18	LOADER TRAY	1
19	DVD LENS	1
20	AC CORD	1
21	TOP CABINET	1
22	MPEG CARD	1
23	SCREW (PM3*6)	2