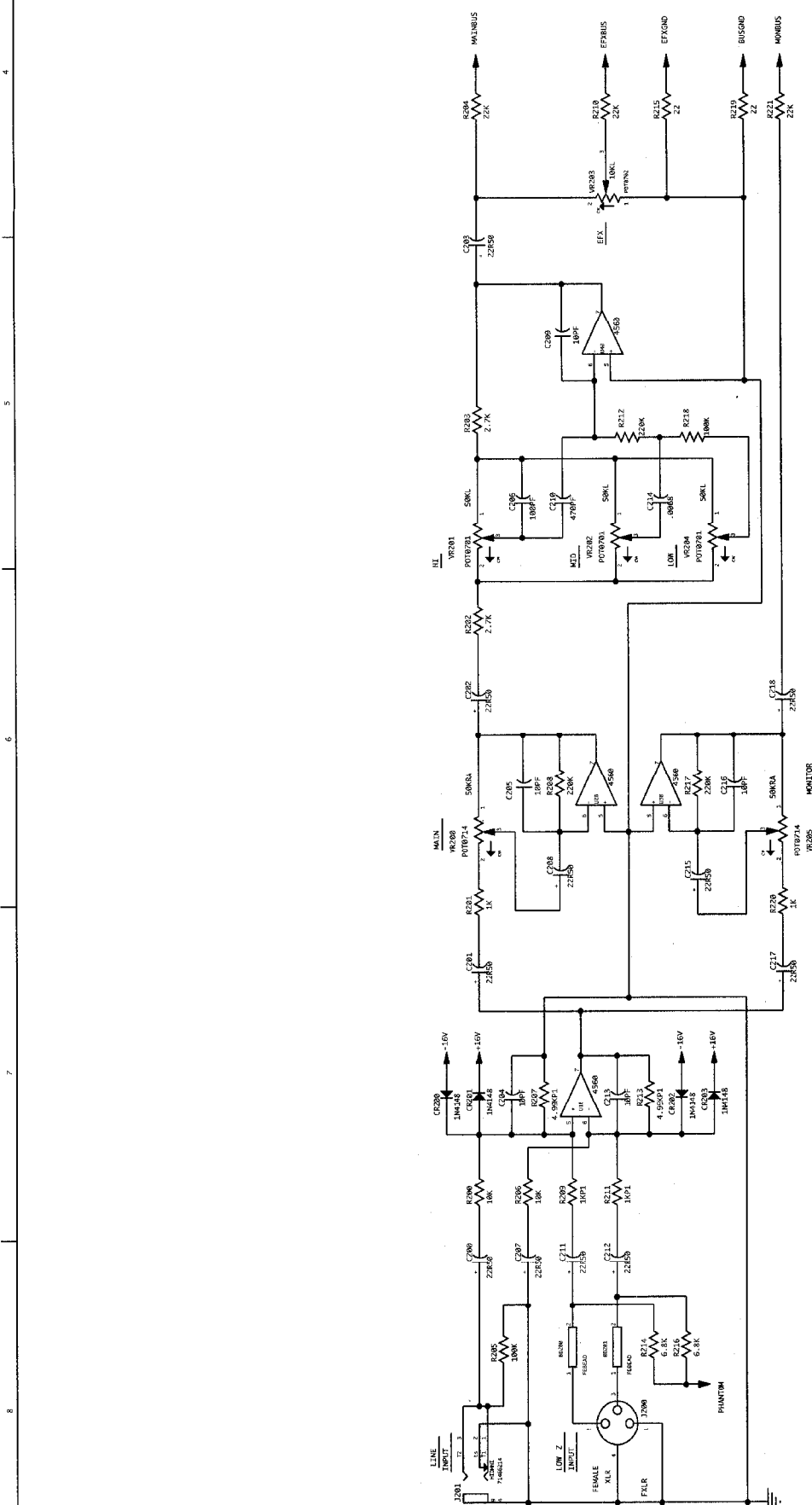
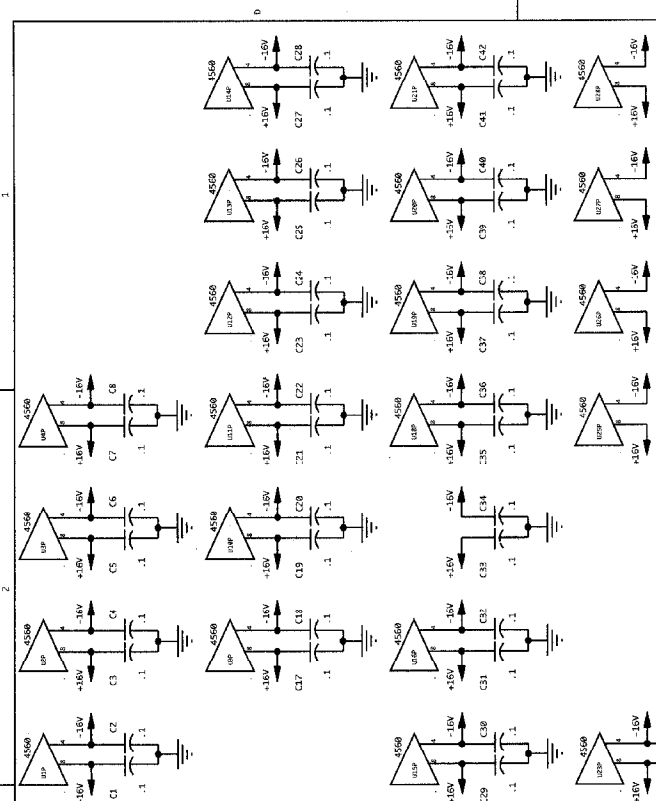
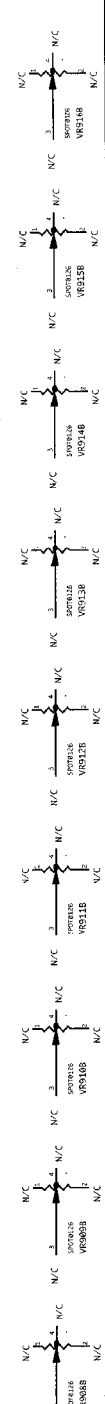


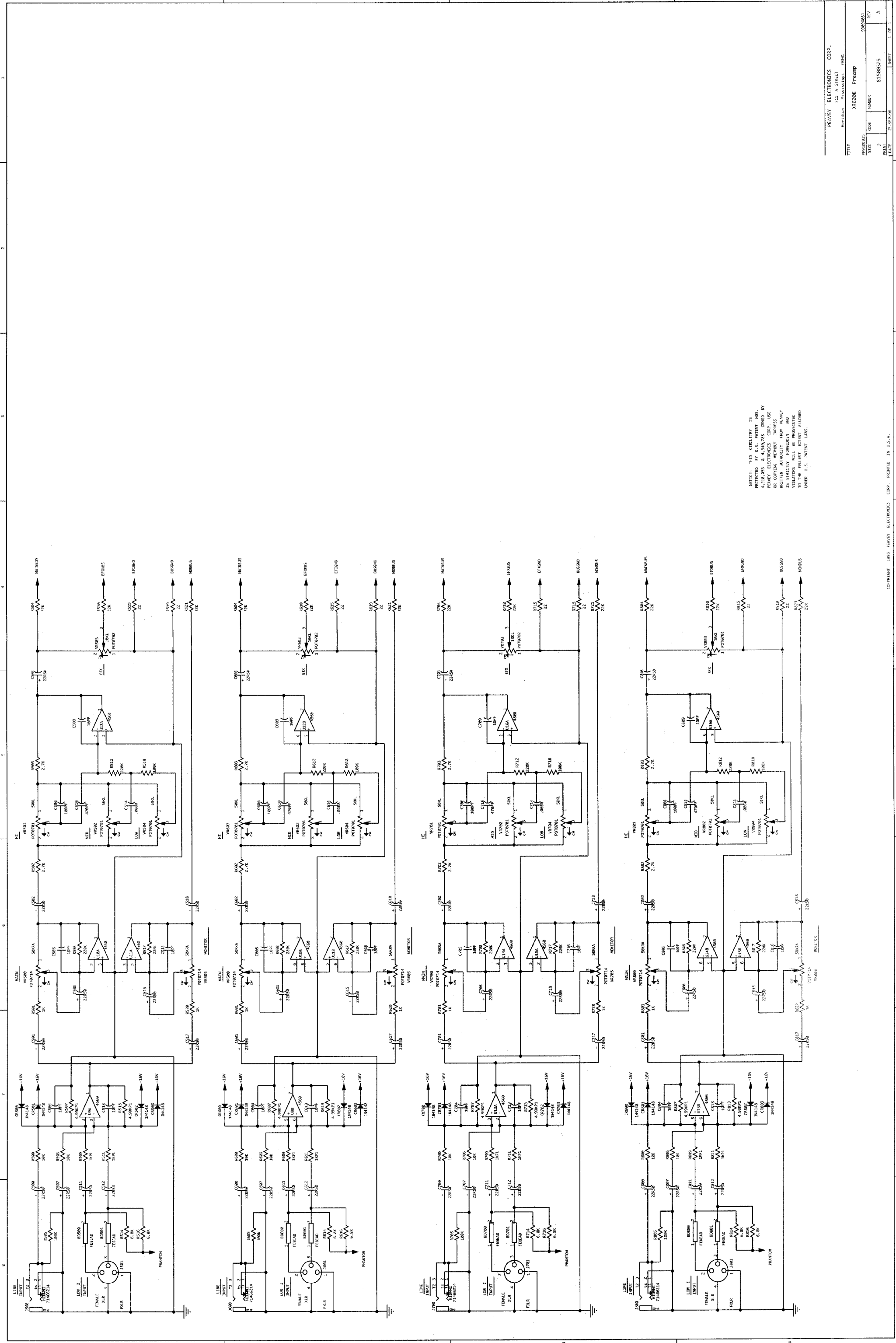
NOTICE: THIS CIRCUITRY IS
PROTECTED BY U.S. PATENT NOS.
4,318,953 & 4,349,758 OWNED BY
PEAVEY ELECTRONICS CORP. USE
OR COPYING WITHOUT EXPRESS
WRITTEN PERMISSION FROM PEAVEY
IS STRICTLY PROHIBITED AND
VIOLATORS WILL BE PROSECUTED
TO THE FULLEST EXTENT ALLOWED
UNDER U.S. PATENT LAWS.

PEAVEY ELECTRONICS CORP.		FILE: XRG600E		1 OF 3	
TITLE		XRG600E Preamp		REV	
DATE		8/15/93		A	
SIZE		D		REV	
PRINT		DATE		1 OF 3	

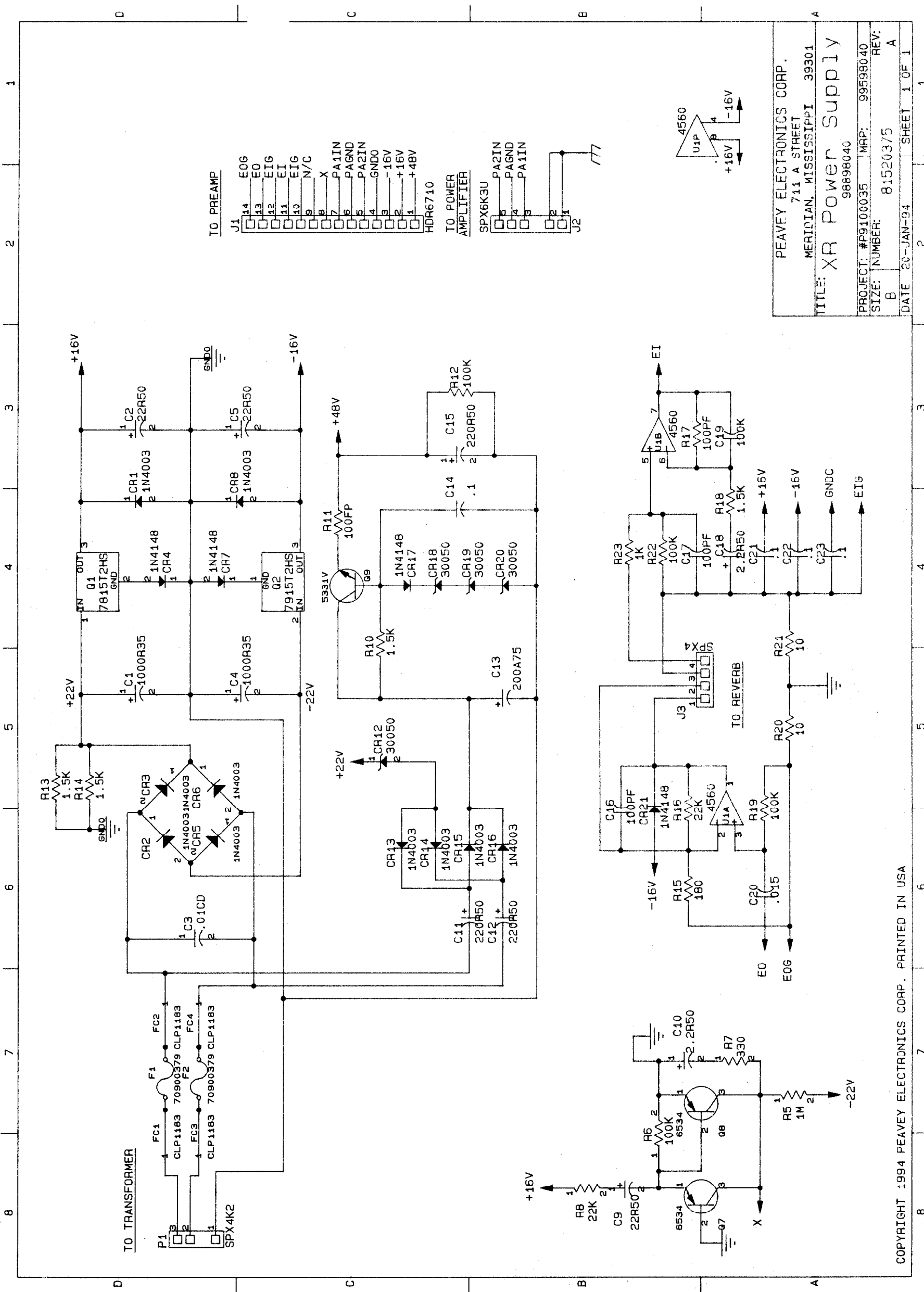


NOTICE: THIS CIRCUITRY IS PROTECTED BY U.S. PATENT NOS. 3,118,953 & 4,349,788 OWNED BY EAVY ELECTRONICS CORP. USE OR COPYING WITHOUT EXPRESS WRITTEN AUTHORITY FROM EAVY IS STRICTLY FORBIDDEN AND VIOLATORS WILL BE PROSECUTED TO THE FULLEST EXTENT ALLOWED UNDER U.S. PATENT LAWS.

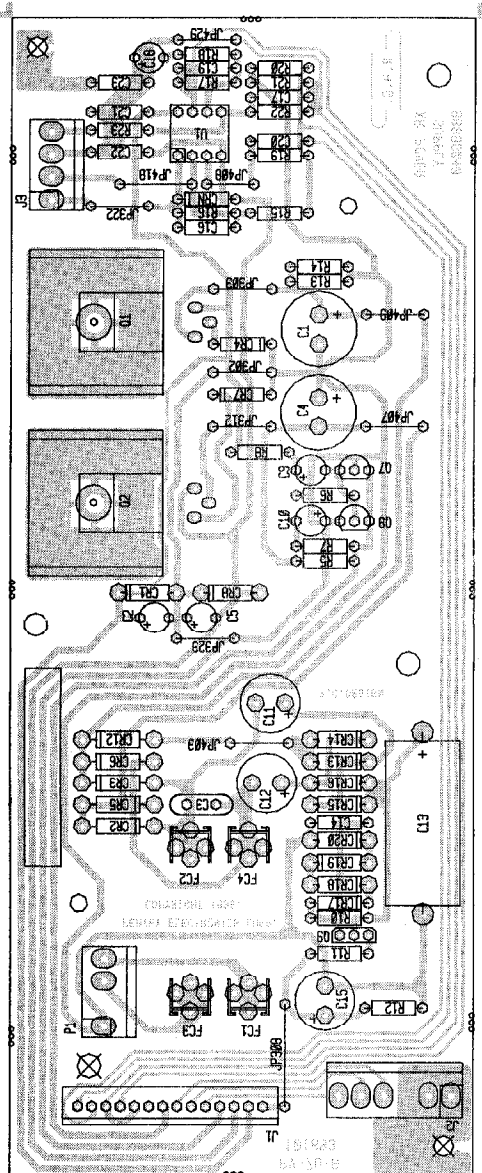
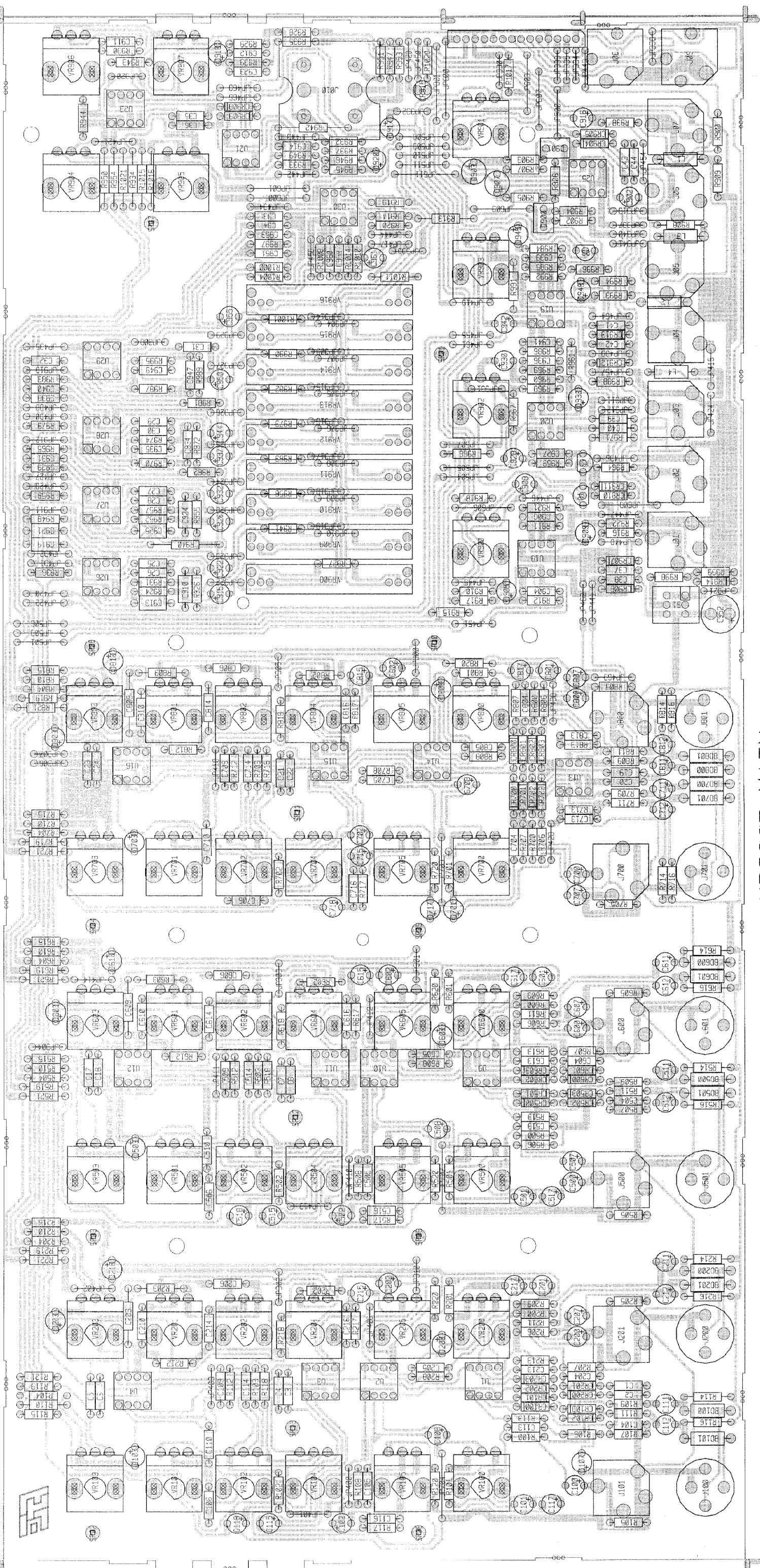




NOTICE: THIS CIRCUITRY IS
REGISTERED IN U.S. PATENT
OFFICE. NO PARTS MAY BE
REPRODUCED OR COPIED BY
ANY OTHER PARTY WITHOUT
WRITTEN AUTHORITY FROM PEAVEY
ELECTRONICS CORP. ALL RIGHTS
RESERVED. THIS DOCUMENT IS
UNDER U.S. PATENT LAWS.



PEAVEY ELECTRONICS CORP.	
711 A STREET	
MERIDIAN, MISSISSIPPI 39301	
TITLE: XR Power Supply	
98898040	
PROJECT: #P9100035	MRP: 99598040
SIZE: NUMBER: B	81520375
DATE 20-JAN-94	SHEET 1 OF 1



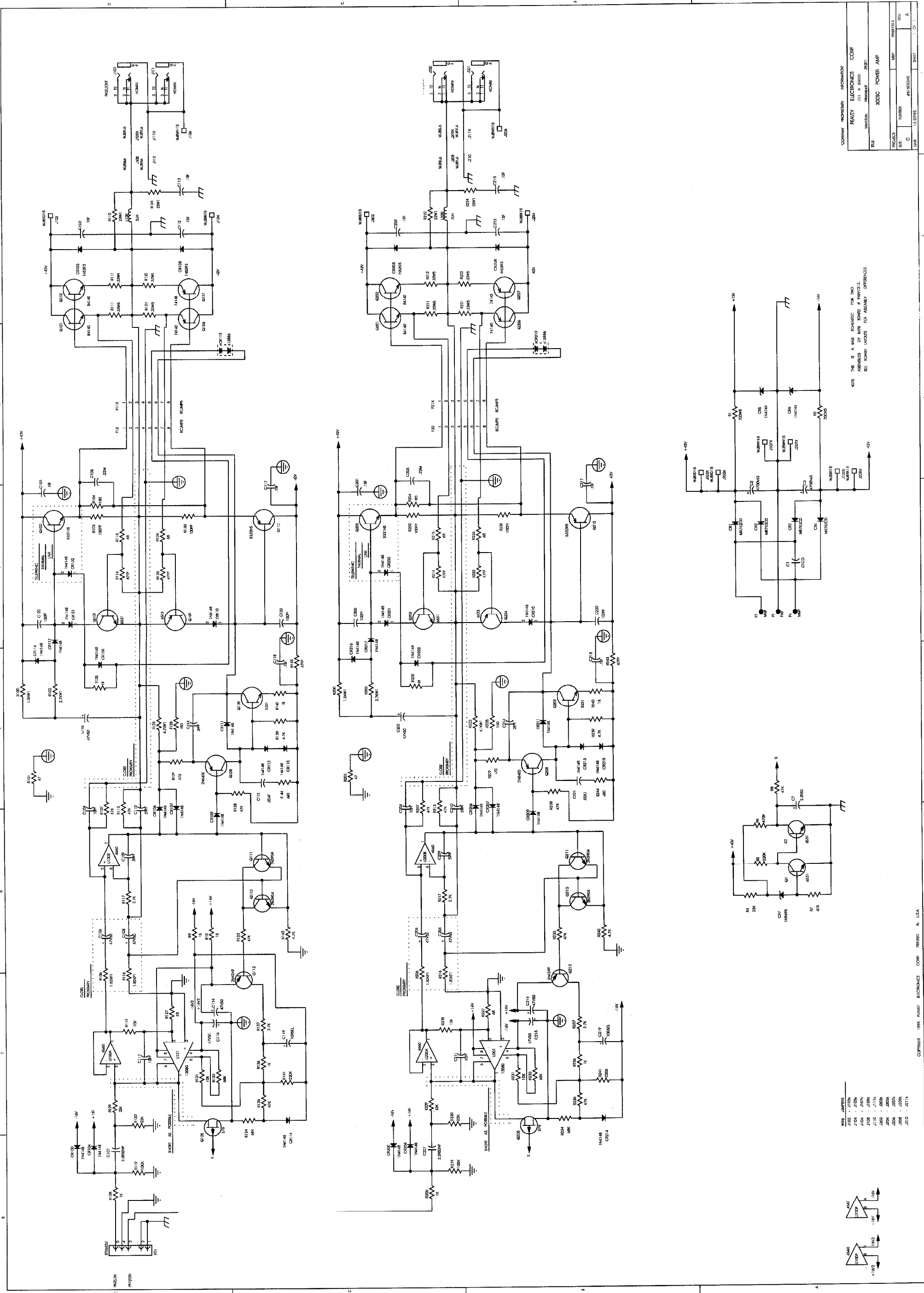
BOARD NAME: X8600E MAIN									
** QTY.	NAME	VALUE	DESCRIPTION AND PART	PART					
***** DEVICE DESIGNATIONS *****									
12	FERRAD	FERRAD	FERRITE BEAD INDUCTOR						
36	.1	.1	1MF---80-20%-50VDC---AXL---T&R						
			BD100, BD1J1, BD200, BD2C1, BD500, BD501, BD630, BD601, BD700, BD701, BD800, BD8J1						
4	22R50	22R50	C1, C2, C3, C4, C5, C6, C7, C8, C17, C18, C19, C20, C21, C22, C23, C24, C25, C26, C27, C28, C29, C30, C31, C32, C33, C34, C35, C36, C37, C38, C39, C40, C41, C42, C43, C44						
2	10PF	10PF	22MF---20%-50VDC-EL-T&A						
1	100PF	100PF	C100, C101, C102, C103						
2	22R50	22R50	10PF---5%-T/C-T&R						
1	10PF	10PF	C104, C105						
1	10PF	10PF	100PF---10%-50VDC---T/C---T&R						
1	10PF	10PF	C106						
1	10PF	10PF	22MF---20%-50VDC-EL-T&A						
1	470PF	470PF	C107, C108						
2	22R50	22R50	10PF---5%-T/C-T&R						
1	10PF	10PF	C109						
2	22R50	22R50	470PF---10%-50VDC---T/C---T&R						
1	10PF	10PF	C110						
1	10PF	10PF	22MF---20%-50VDC-EL-T&A						
1	10PF	10PF	C111, C112						
1	.0068	.0068	10PF---5%-T/C-T&R						
1	22R50	22R50	C113						
1	10PF	10PF	.0068MF-10%-50VDC-MON-T&R						
1	10PF	10PF	C114						
1	10PF	10PF	22MF---20%-50VDC-EL-T&A						
1	10PF	10PF	C115						
6	22R50	22R50	10PF---5%-T/C-T&R						
2	10PF	10PF	C116						
2	10PF	10PF	22MF---20%-50VDC-EL-T&A						
1	10PF	10PF	C117, C118, C200, C201, C202, C2						
1	10PF	10PF	10PF---5%-T/C-T&R						
1	100PF	100PF	C204, C205						
2	22R50	22R50	100PF---10%-50VDC---T/C---T&R						
1	10PF	10PF	C206						
1	10PF	10PF	22MF---20%-50VDC-EL-T&A						
1	10PF	10PF	C207, C208						
1	470PF	470PF	10PF---5%-T/C-T&R						
2	22R50	22R50	470PF---10%-50VDC---T/C---T&R						
1	10PF	10PF	C210						
2	22R50	22R50	22MF---20%-50VDC-EL-T&A						
1	10PF	10PF	C211, C212						
1	10PF	10PF	10PF---5%-T/C-T&R						
1	.0068	.0068	C213						
1	22R50	22R50	.0068MF-10%-50VDC-MON-T&R						
1	10PF	10PF	C214						
1	10PF	10PF	22MF---20%-50VDC-EL-T&A						
1	10PF	10PF	C215						
6	22R50	22R50	10PF---5%-T/C-T&R						
2	10PF	10PF	C216						
2	22R50	22R50	22MF---20%-50VDC-EL-T&A						
1	10PF	10PF	C217, C218, C500, C5J1, C502, C503						
1	100PF	100PF	10PF---5%-T/C-T&R						
1	100PF	100PF	C504, C505						
2	22R50	22R50	100PF---10%-50VDC---T/C---T&R						
1	10PF	10PF	C506						
1	10PF	10PF	22MF---20%-50VDC-EL-T&A						
1	10PF	10PF	C507, C508						
1	470PF	470PF	10PF---5%-T/C-T&R						
2	22R50	22R50	470PF---10%-50VDC---T/C---T&R						
1	10PF	10PF	C510						
1	10PF	10PF	22MF---20%-50VDC-EL-T&A						
1	10PF	10PF	C511, C512						
1	.0068	.0068	10PF---5%-T/C-T&R						
1	22R50	22R50	C513						
1	10PF	10PF	.0068MF-10%-50VDC-MON-T&R						
1	10PF	10PF	C514						
1	10PF	10PF	22MF---20%-50VDC-EL-T&A						
1	10PF	10PF	C515						
6	22R50	22R50	10PF---5%-T/C-T&R						
2	10PF	10PF	C516						
1	10PF	10PF	22MF---20%-50VDC-EL-T&A						
1	100PF	100PF	C517, C518, C600, C601, C502, C603						
1	100PF	100PF	10PF---5%-T/C-T&R						
2	22R50	22R50	C604, C605						
1	10PF	10PF	100PF---10%-50VDC---T/C---T&R						
2	22R50	22R50	C606						
1	10PF	10PF	22MF---20%-50VDC-EL-T&A						
1	10PF	10PF	C607, C608						
1	470PF	470PF	10PF---5%-T/C-T&R						
2	22R50	22R50	470PF---10%-50VDC---T/C---T&R						
1	10PF	10PF	C609						
1	10PF	10PF	22MF---20%-50VDC-EL-T&A						
1	10PF	10PF	C610						
1	10PF	10PF	100PF---10%-50VDC---T/C---T&R						
1	10PF	10PF	C611, C612						
1	10PF	10PF	10PF---5%-T/C-T&R						
			C613						
1	22R50	22R50	22MF---20%-50VDC-EL-T&A						
1	39PF	39PF	C614						
1	39PF	39PF	22MF---20%-50VDC-EL-T&A						
1	22R50	22R50	C615						
1	22R50	22R50	10PF---5%-T/C-T&R						
1	.012	.012	C616						
1	2.2R50	2.2R50	22MF---20%-50VDC-EL-T&A						
1	2.2R50	2.2R50	C617, C618, C700, C701, C702, C703						
1	2.2R50	2.2R50	10PF---5%-T/C-T&R						
1	.012	.012	C704, C705						
2	22R50	22R50	22MF---20%-50VDC-EL-T&A						
2	22R50	22R50	C706						
2	22R50	22R50	100PF---10%-50VDC---T/C---T&R						
2	22R50	22R50	C707, C708						
2	.012	.012	10PF---5%-T/C-T&R						
1	39PF	39PF	C709						
1	22R50	22R50	4702PF---10%-50VDC---T/C---T&R						
1	22R50	22R50	C710						
1	22R50	22R50	22MF---20%-50VDC-EL-T&A						
1	10PF	10PF	C711, C712						
1	.012	.012	10PF---5%-T/C-T&R						
1	39PF	39PF	C713						
1	22R50	22R50	.0068MF-10%-50VDC-MON-T&R						
1	22R50	22R50	C714						
1	.012	.012	22MF---20%-50VDC-EL-T&A						
1	39PF	39PF	C715						
1	39PF	39PF	10PF---5%-T/C-T&R						
1	22R50	22R50	C716						
1	22R50	22R50	22MF---20%-50VDC-EL-T&A						
2	2.2R50	2.2R50	C717, C718, C800, C8C1, C802, C803						
2	2.2R50	2.2R50	10PF---5%-T/C-T&R						
1	.0015	.0015	C804, C805						
1	.0015	.0015	100PF---10%-50VDC---T/C---T&R						
1	22R50	22R50	C806						
1	22R50	22R50	22MF---20%-50VDC-EL-T&A						
1	10PF	10PF	C807, C808						
1	470PF	470PF	10PF---5%-T/C-T&R						
2	22R50	22R50	C809						
2	22R50	22R50	470PF---10%-50VDC---T/C---T&R						
1	10PF	10PF	C810						
1	22R50	22R50	22MF---20%-50VDC-EL-T&A						
1	10PF	10PF	C811, C812						
1	.0015	.0015	10PF---5%-T/C-T&R						
1	.0015	.0015	C813						
1	22R50	22R50	.0068MF-10%-50VDC-MON-T&R						
1	22R50	22R50	C814						
1	22R50	22R50	22MF---20%-50VDC-EL-T&A						
1	10PF	10PF	C815						
1	10PF	10PF	10PF---5%-T/C-T&R						
2	.0015	.0015	C816						
1	2.2R50	2.2R50	22MF---20%-50VDC-EL-T&A						
1	10PF	10PF	C817, C818						
1	22R50	22R50	.033 MFD 50VDC 5% MY T&A						
1	22R50	22R50	C900, C901						
1	22R50	22R50	22MF---20%-50VDC-EL-T&A						
1	470R6.3	470R6.3	470MF---20%-6.3VDC-EL-T&A						
1	100PF	100PF	C903						
1	22R50	22R50	100PF---10%-50VDC---T/C---T&R						
1	22R50	22R50	C904						
1	100PF	100PF	22MF---20%-50VDC-EL-T&A						
1	100PF	100PF	C905						
1	470R6.3	470R6.3	100PF---10%-50VDC---T/C---T&R						
1	470R6.3	470R6.3	C906						
2	22R50	22R50	470MF---20%-6.3VDC-EL-T&A						
2	22R50	22R50	C907						
1	10PF	10PF	22MF---20%-50VDC-EL-T&A						
1	10PF	10PF	C908, C909						
1	.1P10	.1P10	.1MF---10%-50VDC-MON-T&R						
1	.1	.1	C910						
1	100PF	100PF	.1MF---+80-20%-50VDC---AXL---T&R						
1	100PF	100PF	C911						
1	100PF	100PF	100PF---10%-50VDC---T/C---T&R						
1	.1P10	.1P10	.1MF---10%-50VDC-MON-T&R						
1	39PF	39PF	C913						
1	22R50	22R50	39PF---50VDC---T/C---T&R						
2	2.2R50	2.2R50	C914						
2	2.2R50	2.2R50	22MF---20%-50VDC-EL-T&A						
1	22R50	22R50	C915						
1	22R50	22R50	2.2MF---20%-50VDC-EL-T&A						
1	22R50	22R50	C916, C917						
1	.1P10	.1P10	22MF---20%-50VDC-EL-T&A						
1	.1P10	.1P10	C918						
1	22R50	22R50	.1MF---10%-50VDC-MON-T&R						
1	22R50	22R50	C919						
1	.1P10	.1P10	22MF---20%-50VDC-EL-T						

2	.82UH	.82UH	70519943	.82 UH 20% INDUCTOR T&R L2, L3	1	22K	22K	70240029	22K-1/4W-5%-CF-T&R R504	22K-1/4W-5%-CF-T&R R710
1	10UH	10UH	70519919	10 MICRO H 20% INDUCTOR L4	1	100K	100K	70240034	100K-1/4W-5%-CF-T&R R505	1K-1/4W-1%-CF-T&R R711
3	J111	J111	70460111	J-111 35V TO-92 NPET LOW T&A Q1, Q2, Q3	1	10K	10K	70240025	10K-1/4W-5%-CF-T&R R506	220K-1/4W-5%-CF-T&R R712
1	10K	10K	70240025	10K-1/4W-5%-CF-T&R R100	1	4.99KPF1	4.99KPF1	70241060	4.99K-1/4W-1%-MF-T&R R507	4.99K-1/4W-1%-MF-T&R R713
1	1K	1K	70240017	1K-1/4W-5%-CF-T&R R101	1	220K	220K	70240036	220K-1/4W-5%-CF-T&R R508	6.8K-1/4W-5%-CF-T&R R714
2	2.7K	2.7K	70240021	2.7K-1/4W-5%-CF-T&R R102, R103	1	1KP1	1KP1	70241077	1K-1/4W-1%-CF-T&R R509	22-1/4W-5%-CF-T&R R715
1	22K	22K	70240029	22K-1/4W-5%-CF-T&R R104	1	22K	22K	70240029	22K-1/4W-5%-CF-T&R R510	6.8K-1/4W-5%-CF-T&R R716
1	100K	100K	70240034	100K-1/4W-5%-CF-T&R R105	1	1KP1	1KP1	70241077	1K-1/4W-1%-CF-T&R R511	220K-1/4W-5%-CF-T&R R717
1	10K	10K	70240025	10K-1/4W-5%-CF-T&R R106	1	220K	220K	70240036	220K-1/4W-5%-CF-T&R R512	100K-1/4W-5%-CF-T&R R718
1	4.99KPF1	4.99KPF1	70241060	4.99K-1/4W-1%-MF-T&R R107	1	4.99KPF1	4.99KPF1	70241060	4.99K-1/4W-1%-MF-T&R R513	22-1/4W-5%-CF-T&R R719
1	220K	220K	70240036	220K-1/4W-5%-CF-T&R R108	1	5.8K	6.8K	70240024	6.8K-1/4W-5%-CF-T&R R514	1K-1/4W-5%-CF-T&R R720
1	1KP1	1KP1	70241077	1K-1/4W-1%-CF-T&R R109	1	22	22	70240007	22-1/4W-5%-CF-T&R R515	22K-1/4W-5%-CF-T&R R721
1	22K	22K	70240029	22K-1/4W-5%-CF-T&R R110	1	5.8K	6.8K	70240024	6.8K-1/4W-5%-CF-T&R R516	10K-1/4W-5%-CF-T&R R800
1	1KP1	1KP1	70241077	1K-1/4W-1%-CF-T&R R111	1	220K	220K	70240036	220K-1/4W-5%-CF-T&R R517	1K-1/4W-5%-CF-T&R R801
1	220K	220K	70240036	220K-1/4W-5%-CF-T&R R112	1	100K	100K	70240034	100K-1/4W-5%-CF-T&R R518	2.7K-1/4W-5%-CF-T&R R802, R803
1	4.99KPF1	4.99KPF1	70241060	4.99K-1/4W-1%-MF-T&R R113	1	22	22	70240007	22-1/4W-5%-CF-T&R R519	22K-1/4W-5%-CF-T&R R804
1	6.8K	6.8K	70240024	6.8K-1/4W-5%-CF-T&R R114	1	1K	1K	70240017	1K-1/4W-5%-CF-T&R R520	100K-1/4W-5%-CF-T&R R805
1	22	22	70240007	22-1/4W-5%-CF-T&R R115	1	22K	22K	70240029	22K-1/4W-5%-CF-T&R R521	10K-1/4W-5%-CF-T&R R806
1	6.8K	6.8K	70240024	6.8K-1/4W-5%-CF-T&R R116	1	10K	10K	70240025	10K-1/4W-5%-CF-T&R R600	4.99K-1/4W-1%-MF-T&R R807
1	220K	220K	70240036	220K-1/4W-5%-CF-T&R R117	1	1K	1K	70240017	1K-1/4W-5%-CF-T&R R601	220K-1/4W-5%-CF-T&R R808
1	100K	100K	70240034	100K-1/4W-5%-CF-T&R R118	2	2.7K	2.7K	70240021	2.7K-1/4W-5%-CF-T&R R602, R603	1K-1/4W-1%-CF-T&R R809
1	22	22	70240007	22-1/4W-5%-CF-T&R R119	1	22K	22K	70240029	22K-1/4W-5%-CF-T&R R604	22K-1/4W-5%-CF-T&R R810
1	1K	1K	70240017	1K-1/4W-5%-CF-T&R R120	1	100K	100K	70240034	100K-1/4W-5%-CF-T&R R605	1K-1/4W-1%-CF-T&R R811
1	22K	22K	70240029	22K-1/4W-5%-CF-T&R R121	1	10K	10K	70240025	10K-1/4W-5%-CF-T&R R606	220K-1/4W-5%-CF-T&R R812
1	10K	10K	70240025	10K-1/4W-5%-CF-T&R R200	1	4.99KPF1	4.99KPF1	70241060	4.99K-1/4W-1%-MF-T&R R607	4.99K-1/4W-1%-MF-T&R R813
1	1K	1K	70240017	1K-1/4W-5%-CF-T&R R201	1	220K	220K	70240036	220K-1/4W-5%-CF-T&R R608	6.8K-1/4W-5%-CF-T&R R814
2	2.7K	2.7K	70240021	2.7K-1/4W-5%-CF-T&R R202, R203	1	1KP1	1KP1	70241077	1K-1/4W-1%-CF-T&R R609	22-1/4W-5%-CF-T&R R815
1	22K	22K	70240029	22K-1/4W-5%-CF-T&R R204	1	22K	22K	70240029	22K-1/4W-5%-CF-T&R R6-0	6.8K-1/4W-5%-CF-T&R R816
1	100K	100K	70240034	100K-1/4W-5%-CF-T&R R205	1	1KP1	1KP1	70241077	1K-1/4W-1%-CF-T&R R6-1	220K-1/4W-5%-CF-T&R R817
1	10K	10K	70240025	10K-1/4W-5%-CF-T&R R206	1	220K	220K	70240036	220K-1/4W-5%-CF-T&R R6-2	100K-1/4W-5%-CF-T&R R818
1	4.99KPF1	4.99KPF1	70241060	4.99K-1/4W-1%-MF-T&R R207	1	4.99KPF1	4.99KPF1	70241060	4.99K-1/4W-1%-MF-T&R R6-3	22-1/4W-5%-CF-T&R R819
1	220K	220K	70240036	220K-1/4W-5%-CF-T&R R208	1	6.8K	6.8K	70240024	6.8K-1/4W-5%-CF-T&R R6-4	1K-1/4W-5%-CF-T&R R820
1	1KP1	1KP1	70241077	1K-1/4W-1%-CF-T&R R209	1	22	22	70240007	22-1/4W-5%-CF-T&R R6-5	22K-1/4W-5%-CF-T&R R821
1	22K	22K	70240029	22K-1/4W-5%-CF-T&R R210	1	6.8K	6.8K	70240024	6.8K-1/4W-5%-CF-T&R R616	100-1/4W-5%-CF-T&R R900
1	1KP1	1KP1	70241077	1K-1/4W-1%-CF-T&R R211	1	220K	220K	70240036	220K-1/4W-5%-CF-T&R R617	4.7K-1/4W-5%-CF-T&R R902, R903
1	220K	220K	70240036	220K-1/4W-5%-CF-T&R R212	1	100K	100K	70240034	100K-1/4W-5%-CF-T&R R618	10K-1/4W-5%-CF-T&R R904
1	4.99KPF1	4.99KPF1	70241060	4.99K-1/4W-1%-MF-T&R R213	1	22	22	70240007	22-1/4W-5%-CF-T&R R619	4.7K-1/4W-5%-CF-T&R R905, R906
1	6.8K	6.8K	70240024	6.8K-1/4W-5%-CF-T&R R214	1	1K	1K	70240017	1K-1/4W-5%-CF-T&R R620	10K-1/4W-5%-CF-T&R R907
1	22	22	70240007	22-1/4W-5%-CF-T&R R215	1	22K	22K	70240029	22K-1/4W-5%-CF-T&R R621	100-1/4W-5%-CF-T&R R908
1	5.8K	6.8K	70240024	6.8K-1/4W-5%-CF-T&R R216	1	10K	10K	70240025	10K-1/4W-5%-CF-T&R R700	47K-1/4W-5%-CF-T&R R909
1	220K	220K	70240036	220K-1/4W-5%-CF-T&R R217	1	1K	1K	70240017	1K-1/4W-5%-CF-T&R R701	2.2K-1/4W-5%-CF-T&R R910
1	100K	100K	70240034	100K-1/4W-5%-CF-T&R R218	2	2.7K	2.7K	70240021	2.7K-1/4W-5%-CF-T&R R702, R703	68K-1/4W-5%-CF-T&R R911
1	22	22	70240007	22-1/4W-5%-CF-T&R R219	1	22K	22K	70240029	22K-1/4W-5%-CF-T&R R704	10K-1/4W-5%-CF-T&R R912, R913, R914, R915
1	1K	1K	70240017	1K-1/4W-5%-CF-T&R R220	1	100K	100K	70240034	100K-1/4W-5%-CF-T&R R705	100-1/4W-5%-CF-T&R R916
1	22K	22K	70240029	22K-1/4W-5%-CF-T&R R221	1	10K	10K	70240025	10K-1/4W-5%-CF-T&R R706	10-1/4W-5%-CF-T&R R917
1	10K	10K	70240025	10K-1/4W-5%-CF-T&R R500	1	4.99KPF1	4.99KPF1	70241060	4.99K-1/4W-1%-MF-T&R R707	2.2K-1/4W-5%-CF-T&R R918
1	1K	1K	70240017	1K-1/4W-5%-CF-T&R R501	1	220K	220K	70240036	220K-1/4W-5%-CF-T&R R708	10-1/4W-5%-CF-T&R R919, R920
2	2.7K	2.7K	70240021	2.7K-1/4W-5%-CF-T&R R502, R503	1	1KP1	1KP1	70241077	1K-1/4W-1%-CF-T&R R709	47K-1/4W-5%-CF-T&R R921, R922

1	75KP1	70241032	75K-1/4W-1%—MF—T&R	R924	1.5K	1.5K	1.5K	70240025	10K-1/4W-5%—CF—T&R	R981	10K-1/4W-5%—CF—T&R	1	POT0702	71190702	71190702	10KB 12MM HPC ROTARY POT	
1	39K	70240048	39K-1/4W-5%—CF—T&R	R926	1	1.5K	1.5K	70240018	1.5K-1/4W-5%—CF—T&R	R982	1.5K-1/4W-5%—CF—T&R	1	POT0701	71190701	71190701	50KB 12MM HPC ROTARY POT W/DTT	
1	1.5K	70240018	1.5K-1/4W-5%—CF—T&R	R927	1	2.7K	2.7K	70240021	2.7K-1/4W-5%—CF—T&R	R983	2.7K-1/4W-5%—CF—T&R	2	POT0714	71190714	71190714	50K REV AUD 5%	
1	22K	70240029	22K-1/4W-5%—CF—T&R	R928	1	18K	18K	70240028	18K-1/4W-5%—CF—T&R	R984	18K-1/4W-5%—CF—T&R	2	POT0701	71190701	71190701	50KB 12MM HPC ROTARY POT W/DTT	
2	100K	70240034	100K-1/4W-5%—CF—T&R	R929, R930	1	150K	150K	70240035	150K-1/4W-5%—CF—T&R	R985	150K-1/4W-5%—CF—T&R	1	POT0702	71190702	71190702	10KB 12MM HPC ROTARY POT	
1	10K	70240025	10K-1/4W-5%—CF—T&R	R931	1	22K	22K	70240029	22K-1/4W-5%—CF—T&R	R986	22K-1/4W-5%—CF—T&R	1	POT0701	71190701	71190701	50KB 12MM HPC ROTARY POT W/DTT	
1	18K	70240028	18K-1/4W-5%—CF—T&R	R932	1	75KP1	75KP1	70241032	75K-1/4W-1%—MF—T&R	R987	75K-1/4W-1%—MF—T&R	2	POT0714	71190714	71190714	50K REV AUD 5%	
1	68K	70240032	68K-1/4W-5%—CF—T&R	R933	1	100	100	70240010	100-1/4W-5%—CF—T&R	R988	100-1/4W-5%—CF—T&R	2	POT0701	71190701	71190701	50KB 12MM HPC ROTARY POT W/DTT	
1	10	70240003	10-1/4W-5%—CF—T&R	R934	1	39K	39K	70240048	39K-1/4W-5%—CF—T&R	R989	39K-1/4W-5%—CF—T&R	1	POT0702	71190702	71190702	10KB 12MM HPC ROTARY POT	
1	22K	70240029	22K-1/4W-5%—CF—T&R	R935	1	1.5K	1.5K	70240018	1.5K-1/4W-5%—CF—T&R	R990	1.5K-1/4W-5%—CF—T&R	1	POT0701	71190701	71190701	50KB 12MM HPC ROTARY POT W/DTT	
1	39K	70240048	39K-1/4W-5%—CF—T&R	R936	1	22	22	70240007	22-1/4W-5%—CF—T&R	R991	22-1/4W-5%—CF—T&R	1	POT0714	71190714	71190714	50K REV AUD 5%	
1	10K	70240025	10K-1/4W-5%—CF—T&R	R937	1	18	18	70240006	18-1/4W-5%—CF—T&R	R992	18-1/4W-5%—CF—T&R	1	POT0705	71190705	71190705	50KC REV AUD 15% HPC ROTARY	
1	2.2M	70240040	2.2M-1/4W-5%—CF—T&R	R938	2	47K	47K	70240031	47K-1/4W-5%—CF—T&R	R993, R994	47K-1/4W-5%—CF—T&R	3	POT0703	71190703	71190703	10KA 12MM HPC ROTARY POT	
1	100K	70240034	100K-1/4W-5%—CF—T&R	R939	1	10K	10K	70240025	10K-1/4W-5%—CF—T&R	R995	10K-1/4W-5%—CF—T&R	2	POT0702	71190702	71190702	10KB 12MM HPC ROTARY POT	
1	20KP1	70241040	20K-1/4W-1%—MF—T&R	R940	1	150	150	70240001	150-1/4W-5%—CF—T&R	R996	150-1/4W-5%—CF—T&R	2	POT0703	71190703	71190703	10KA 12MM HPC ROTARY POT	
1	1.5K	70240018	1.5K-1/4W-5%—CF—T&R	R941	1	39K	39K	70240048	39K-1/4W-5%—CF—T&R	R997	39K-1/4W-5%—CF—T&R	9	SPOT0126	71190126	71190126	50KWX2 30MM SLIDER W/DTT&TAP	
1	18	70240006	18-1/4W-5%—CF—T&R	R942	1	100	100	70240010	100-1/4W-5%—CF—T&R	R998	100-1/4W-5%—CF—T&R					VR908, VR909, VR910, VR911, VR912,	
1	10K	70240025	10K-1/4W-5%—CF—T&R	R943	1	10K	10K	70240025	10K-1/4W-5%—CF—T&R	R999	10K-1/4W-5%—CF—T&R					VR913, VR914, VR915, VR916	
1	33K	70240030	33K-1/4W-5%—CF—T&R	R944	1	20KP1	20KP1	70241040	20K-1/4W-1%—MF—T&R	R1000	20K-1/4W-1%—MF—T&R						
2	47K	70240031	47K-1/4W-5%—CF—T&R	R945, R946	1	1.5K	1.5K	70240018	1.5K-1/4W-5%—CF—T&R	R1001	1.5K-1/4W-5%—CF—T&R						
1	10K	70240025	10K-1/4W-5%—CF—T&R	R947	1	5.62KP1	5.62KP1	70241008	5.62K-1/4W-1%—MF—T&R	R1004	5.62K-1/4W-1%—MF—T&R						
1	5.62KP1	70241008	5.62K-1/4W-1%—MF—T&R	R948	1	20KP1	20KP1	70241040	20K-1/4W-1%—MF—T&R	R1008	20K-1/4W-1%—MF—T&R						
1	68	70240009	68-1/4W-5%—CF—T&R	R949	1	10K	10K	70240025	10K-1/4W-5%—CF—T&R	R1010	10K-1/4W-5%—CF—T&R						
1	22K	70240029	22K-1/4W-5%—CF—T&R	R950	1	1.5K	1.5K	70240018	1.5K-1/4W-5%—CF—T&R	R1011	1.5K-1/4W-5%—CF—T&R						
1	10K	70240025	10K-1/4W-5%—CF—T&R	R951	1	2.7K	2.7K	70240021	2.7K-1/4W-5%—CF—T&R	R1014	2.7K-1/4W-5%—CF—T&R						
1	20KP1	70241040	20K-1/4W-1%—MF—T&R	R952	2	10K	10K	70240025	10K-1/4W-5%—CF—T&R	R1015, R1016	10K-1/4W-5%—CF—T&R						
1	10K	70240025	10K-1/4W-5%—CF—T&R	R953	1	1K	1K	70240017	1K-1/4W-5%—CF—T&R	R1017	1K-1/4W-5%—CF—T&R						
1	22	70240007	22-1/4W-5%—CF—T&R	R954	1	1.5K	1.5K	70240018	1.5K-1/4W-5%—CF—T&R	R1020	1.5K-1/4W-5%—CF—T&R						
1	10K	70240025	10K-1/4W-5%—CF—T&R	R955	1	22K	22K	70240029	22K-1/4W-5%—CF—T&R	R1021	22K-1/4W-5%—CF—T&R						
1	1.5K	70240018	1.5K-1/4W-5%—CF—T&R	R956	1	SUZPP	SUZPP	71322251	SUZ P/F SWITCH PC MOUNT	S1	045-SQ-WIRE-PIN-3/4LG						
1	2.7K	70240021	2.7K-1/4W-5%—CF—T&R	R957	13	SP15MM	SP15MM	73717121	SP01, SP02, SP03, SP04, SP05, SP06, SP07, SP08, SP09, SP10, SP11, SP12, SP13								
1	75KP1	70241032	75K-1/4W-1%—MF—T&R	R958	23	4560	4560	70414560	4560 DUAL OP AMP IC								
1	10K	70240025	10K-1/4W-5%—CF—T&R	R959					U1, U2, U3, U4, U9, U10, U11, U12, U13, U14, U15, U16, U18, U19, U20, U21, U23.								
1	18K	70240028	18K-1/4W-5%—CF—T&R	R960					50K REV AUD 5%								
1	100K	70240034	100K-1/4W-5%—CF—T&R	R961	1	POT0714	71190714	71190714	50KB 12MM HPC ROTARY POT W/DTT								
1	39K	70240048	39K-1/4W-5%—CF—T&R	R962	2	POT0701	71190701	71190701	50KB 12MM HPC ROTARY POT W/DTT								
1	1.5K	70240018	1.5K-1/4W-5%—CF—T&R	R963	1	POT0702	71190702	71190702	10KB 12MM HPC ROTARY POT								
1	100	70240010	100-1/4W-5%—CF—T&R	R964	2	POT0714	71190714	71190714	50K REV AUD 5%								
2	10K	70240025	10K-1/4W-5%—CF—T&R	R965, R966	1	POT0701	71190701	71190701	50KB 12MM HPC ROTARY POT W/DTT								
1	10	70240003	10-1/4W-5%—CF—T&R	R967	2	POT0702	71190702	71190702	10KB 12MM HPC ROTARY POT								
1	18K	70240028	18K-1/4W-5%—CF—T&R	R968	1	POT0701	71190701	71190701	50KB 12MM HPC ROTARY POT								
1	100K	70240034	100K-1/4W-5%—CF—T&R	R969	1	POT0702	71190702	71190702	10KB 12MM HPC ROTARY POT								
1	39K	70240048	39K-1/4W-5%—CF—T&R	R970	2	POT0714	71190714	71190714	50K REV AUD 5%								
1	47K	70240031	47K-1/4W-5%—CF—T&R	R971	2	POT0701	71190701	71190701	50KB 12MM HPC ROTARY POT								
1	20KP1	70241040	20K-1/4W-1%—MF—T&R	R972	1	POT0702	71190702	71190702	10KB 12MM HPC ROTARY POT								
1	1.5K	70240018	1.5K-1/4W-5%—CF—T&R	R973	1	POT0701	71190701	71190701	50KB 12MM HPC ROTARY POT								
1	5.62KP1	70241008	5.62K-1/4W-1%—MF—T&R	R974	2	POT0714	71190714	71190714	50K REV AUD 5%								
1	20KP1	70241040	20K-1/4W-1%—MF—T&R	R975	2	POT0701	71190701	71190701	50KB 12MM HPC ROTARY POT W/DTT								
									VR601, VR602								

XR Power Supply

RefDes	Value	Part#	Description
C1	1000R35	70320186	1000MF—20%—5VDC—EL—T&A
C2	22R50	70320181	22MF—20%—5VDC—EL—T&A
C3	010CD	70320249	01MF—20%—100VDC—CD—T&A
C4	1000R35	70320186	1000MF—20%—5VDC—EL—T&A
C5	22R50	70320181	22MF—20%—5VDC—EL—T&A
C6	22R50	70320181	22MF—20%—5VDC—EL—T&A
C7	22R50	70320181	22MF—20%—5VDC—EL—T&A
C8	22R50	70320181	22MF—20%—5VDC—EL—T&A
C9	22R50	70320181	22MF—20%—5VDC—EL—T&A
C10	22R50	70320181	22MF—20%—5VDC—EL—T&A
C11	22R50	70320181	22MF—20%—5VDC—EL—T&A
C12	22R50	70320181	22MF—20%—5VDC—EL—T&A
C13	22R50	70320181	22MF—20%—5VDC—EL—T&A
C14	1	70340100	1MF—80-20%-5VDC—AXL—T&R
C15	22R50	70320181	22MF—20%—5VDC—EL—T&A
C16	100PF	70340054	100PF—10%—5VDC—TC—T&R
C17	100PF	70340054	100PF—10%—5VDC—TC—T&R
C18	22R50	70320181	22MF—20%—5VDC—EL—T&A
C19	100K	70240024	100K—14W—5%—CF—T&R
C20	015	70340100	015MF—10%—5VDC—TC—T&R
C21	1	70340100	1MF—80-20%-5VDC—AXL—T&R
C22	1	70340100	1MF—80-20%-5VDC—AXL—T&R
C23	1	70340100	1MF—80-20%-5VDC—AXL—T&R
CR1	1N4003	70464003	1N4003 200V SILICON DIODE
CR2	1N4003	70464003	1N4003 200V SILICON DIODE
CR3	1N4003	70464003	1N4003 200V SILICON DIODE
CR4	1N4148	70464148	1N4148 75V 10MA SILICON DIODE
CR5	1N4003	70464003	1N4003 200V SILICON DIODE
CR6	1N4003	70464003	1N4003 200V SILICON DIODE
CR7	1N4148	70464148	1N4148 75V 10MA SILICON DIODE
CR8	1N4003	70464003	1N4003 200V SILICON DIODE
CR12	30050	70460050	SZP30050 16V 1WATT 5% ZENER DIODE T&R
CR13	1N4003	70464003	1N4003 200V SILICON DIODE
CR14	1N4003	70464003	1N4003 200V SILICON DIODE
CR15	1N4003	70464003	1N4003 200V SILICON DIODE
CR16	1N4003	70464003	1N4003 200V SILICON DIODE
CR17	1N4148	70464148	1N4148 75V 10MA SILICON DIODE
CR18	30050	70460050	SZP30050 16V 1WATT 5% ZENER DIODE T&R
CR19	30050	70460050	SZP30050 16V 1WATT 5% ZENER DIODE T&R
CR20	30050	70460050	SZP30050 16V 1WATT 5% ZENER DIODE T&R
CR21	1N4148	70464148	1N4148 75V 10MA SILICON DIODE
Q1	7815T2S	70400240	7815 15V 1A POS TO-220 RG
Q2	7815T2S	70400240	7815 15V 1A NEG TO-220 RG
Q7	6834	7046533	MPS-6533/94 TO-92 PNP TRANS T&A
Q8	6834	7046533	MPS-6533/94 TO-92 PNP TRANS T&A
Q9	6834	7046533	MPS-6533/94 TO-92 PNP TRANS T&A
R6	10K	70240039	10K—14W—5%—CF—T&R
R7	10K	70240039	10K—14W—5%—CF—T&R
R8	22K	70240028	22K—14W—5%—CF—T&R
R9	10K	70240018	10K—14W—5%—CF—T&R
R10	10K	70240018	10K—14W—5%—CF—T&R
R11	100PF	70240036	100PF—10%—50VDC—TC—T&R
R12	100K	70240034	100K—14W—5%—CF—T&R
R13	15K	70240018	15K—14W—5%—CF—T&R
R14	15K	70240018	15K—14W—5%—CF—T&R
R15	18K	70240018	18K—14W—5%—CF—T&R
R16	22K	70240028	22K—14W—5%—CF—T&R
R17	100PF	70240036	100PF—10%—50VDC—TC—T&R
R18	15K	70240018	15K—14W—5%—CF—T&R
R19	10K	70240034	100K—14W—5%—CF—T&R
R20	10	70240003	10—14W—5%—CF—T&R
R21	10	70240003	10—14W—5%—CF—T&R
R22	10K	70240034	100K—14W—5%—CF—T&R
R23	1K	70240017	1K—14W—5%—CF—T&R
U1	4560	70414960	4560 DUAL OP AMP IC



WIRE JUMPS
J102 - J103
J104 - J105
J106 - J107
J108 - J109
J110 - J111
J112 - J113
J114 - J115
J116 - J117
J118 - J119
J120 - J121

NOTE THIS IS A BASE SCHEMATIC FOR TWO
ASSEMBLIES OF BOARD # 9997312.
SEE BOARD JUMPS FOR ASSEMBLY DIFFERENCES.

COMPANY: REAVY ELECTRONICS CORP
TITLE: 300SC POWER AMP
REV: A
DATE: 12/29/65

COMPRESS 1955 REAVY ELECTRONICS CORP PRINTED IN U.S.A.

FOR IRM 8150 ASSEMBLY
USE 1.5K RESISTORS

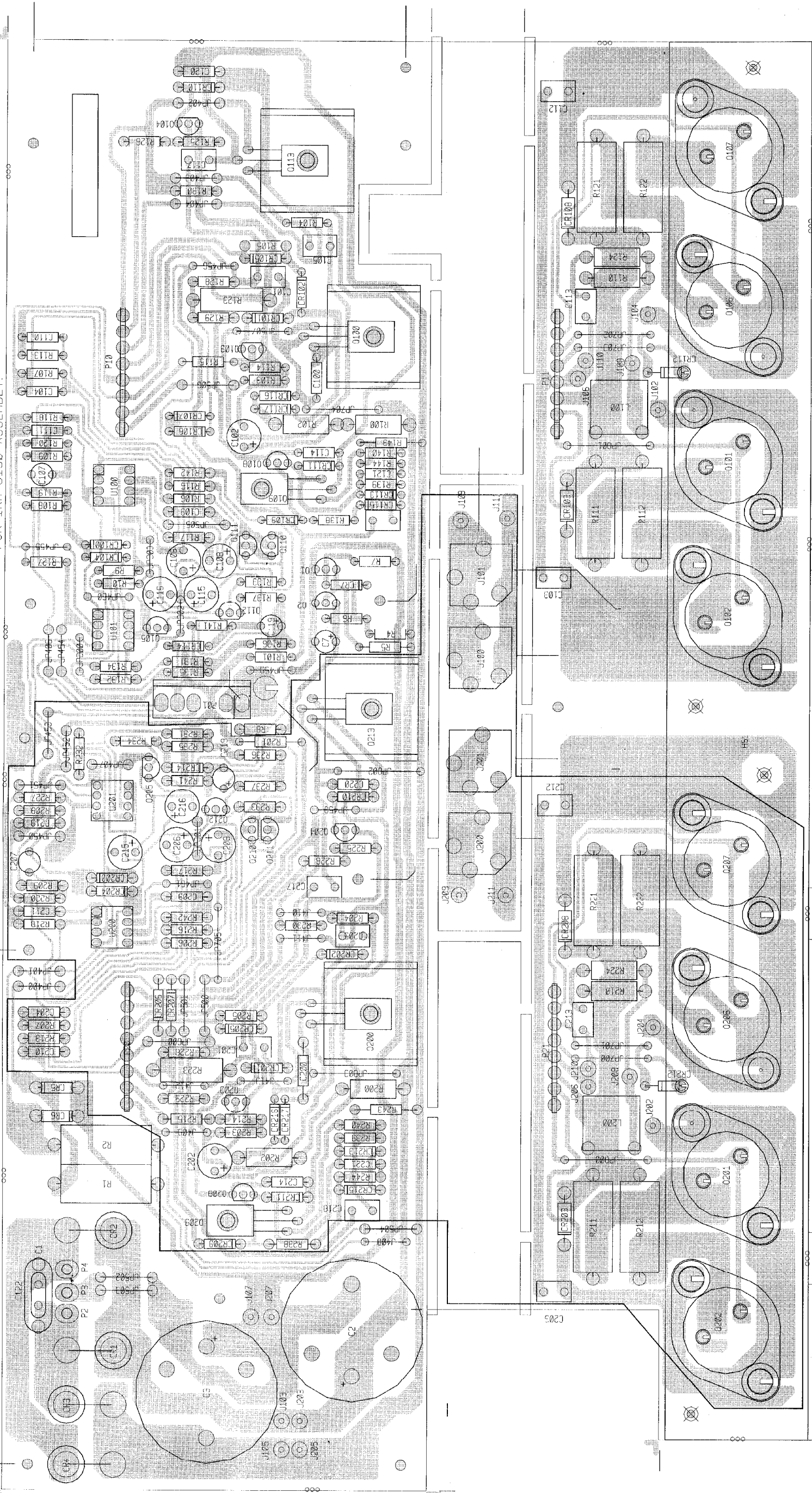
DEVICES IN THIS AREA WILL NOT BE
PLACED ON THE IRM 8150 ASSEMBLY

DO NOT INSERT PIN #1
FOR IRM 8150 ASSEMBLY

INSERT C122 FOR BOTH EXPORT ASSEMBLIES
INSERT C1 FOR BOTH DOMESTIC ASSEMBLIES

ASSEMBLY NAME
300SC DOMESTIC
300SC EXPORT
IRM 8150 DOMESTIC
IRM 8150 EXPORT

300SC POWER

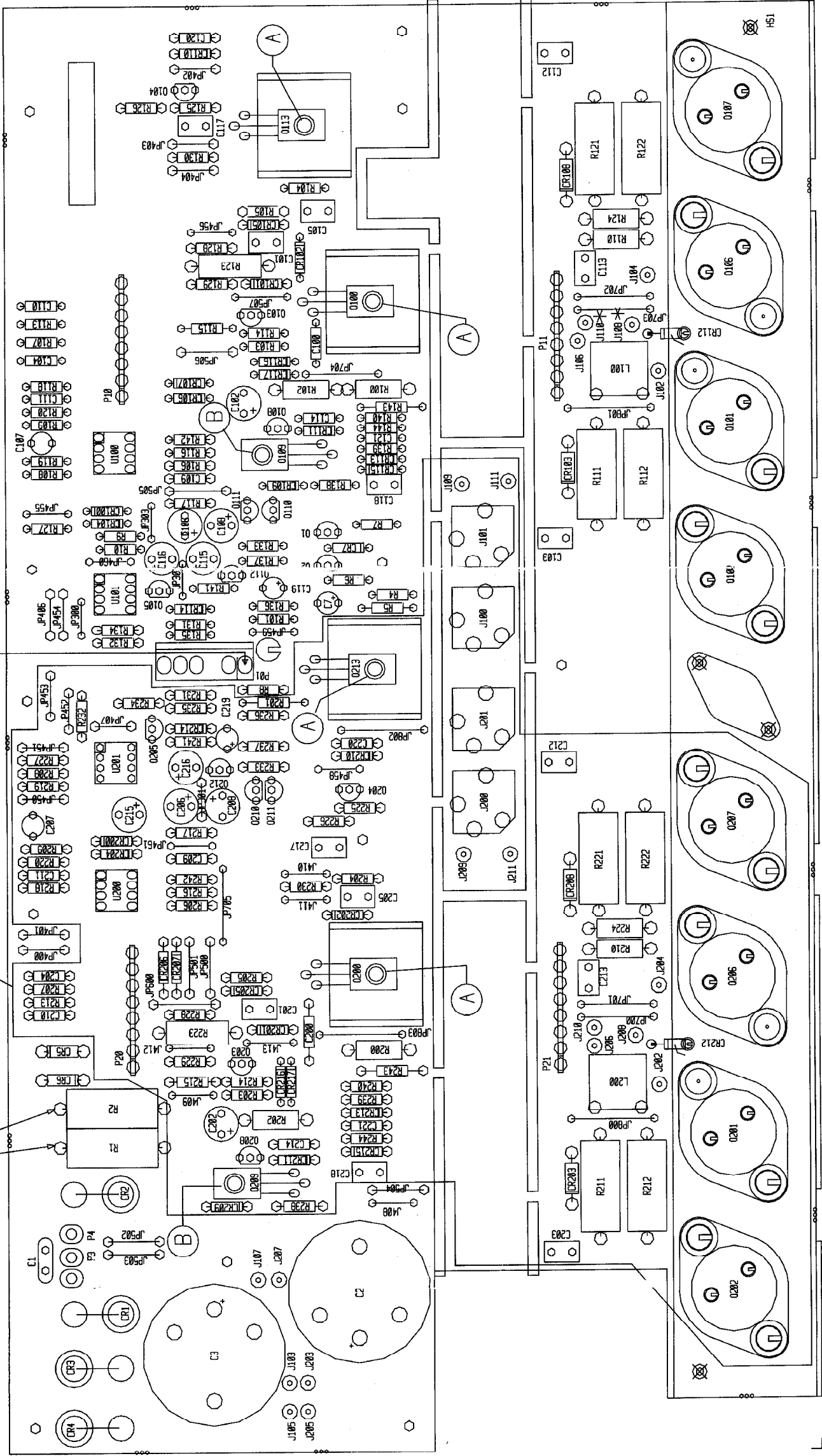


ASSEMBLY NAME	ASSEMBLY P/N
XRD 680	99597312
IRM 8150	99530383

FOR IRM 8150 ASSEMBLY
USE 1.5K RESISTORS

DEVICES IN THIS AREA WILL NOT
BE PLACED ON THE IRM 8150 ASSEMBLY.

DO NOT INSERT PIN #1
FOR IRM 8150 ASSEMBLY.



P/N's of wire jumpers
J102. J103. J203 - P/N 91012174
J104. J105. J204. J205 - P/N 91090175
J106. J107. J206. J207 - P/N 91011165
J108. J109. J208. J209 - P/N 91090172
J110. J111. J210. J211 - P/N 91090173

*NOTE: FOR IRM 8150 ASSEMBLY:
J108 USES WIRE P/N 91090253
J110 USES WIRE P/N 91090254

Connect wire jumpers
to the following locations:

XRD 680	IRM 8150
J210 to J211	J102 to J103
J208 to J209	J104 to J105
J206 to J207 @	J106 to J107 #
J102 to J103 #	J108 & J110
J104 to J105 #	WILL NOT BE
J106 to J107	CONNECTED.
J108 to J109	
J110 to J111	
J202 to J203 @	
J204 to J205 @	

300SC / IRM8150 POWER/DRIVE BD.

1	2.7K	2.7K	70240021	2.7K-1/4W-5%—CF-T&R R237
1	47K	47K	70240031	47K-1/4W-5%—CF-T&R R238
1	4.7K	4.7K	70240023	4.7K-1/4W-5%—CF-T&R R239
1	18	18	70240006	18—1/4W-5%—CF-T&R R240
1	220K	220K	70240036	220K-1/4W-5%—CF-T&R R241
1	4.7K	4.7K	70240023	4.7K-1/4W-5%—CF-T&R R242
1	47FP	47FP	70240090	47FP-1/4W-5%—FP-T&R R243
1	680	680	70240016	680-1/4W-5%—CF-T&R R244
1	4560	4560	70414560	4560 DUAL OP AMP IC U100
1	13080	13080	70413080	LM3080N CUSTOM SELECTED U101
1	4560	4560	70414560	4560 DUAL OP AMP IC U200
1	13080	13080	70413080	LM3080N CUSTOM SELECTED U201
