

# Philco



**T  
V  
  
P  
H  
  
1  
4  
C**

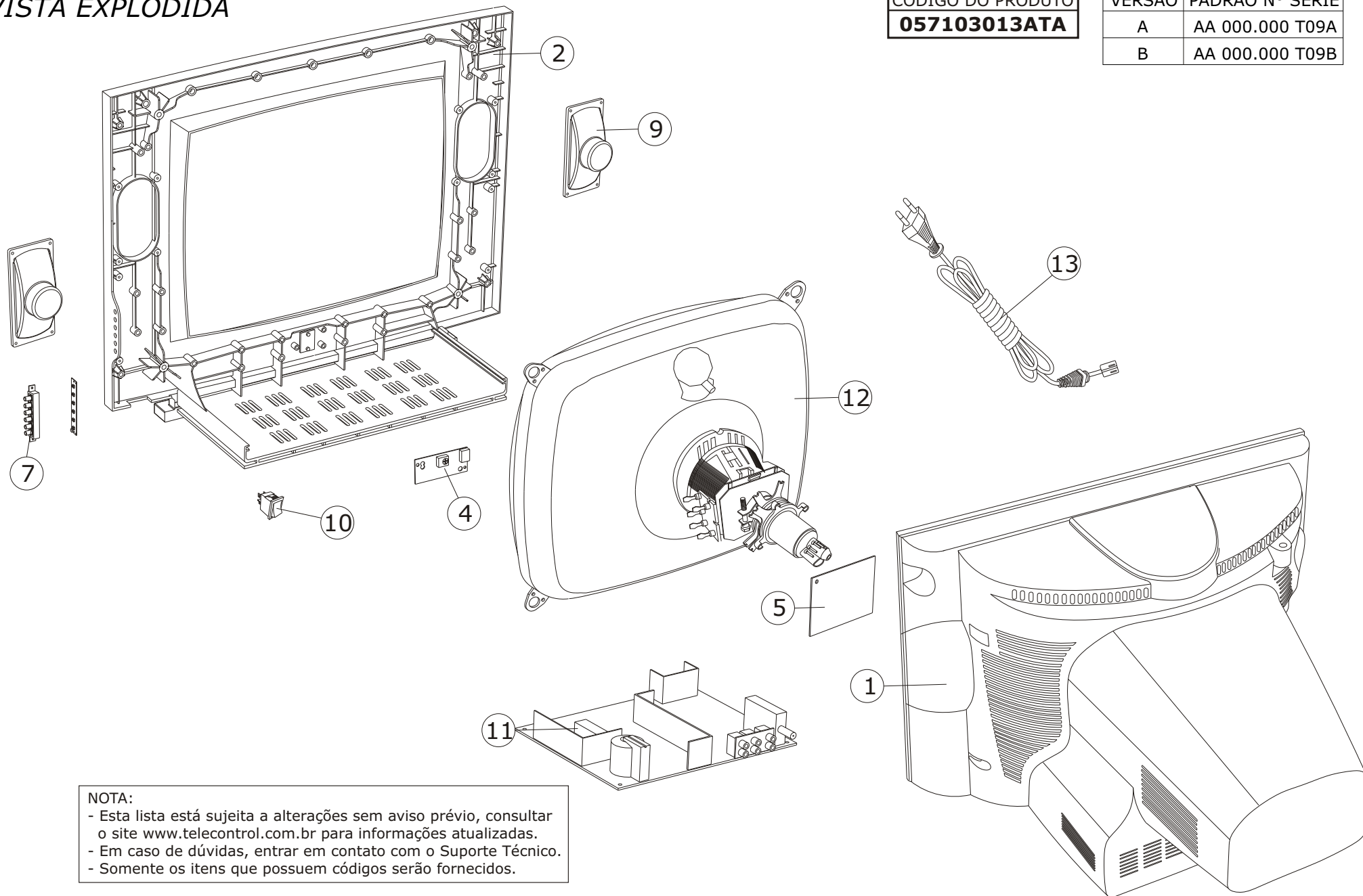
**0800 415300**

[suporte.tecnico@britania.com.br](mailto:suporte.tecnico@britania.com.br)

# VISTA EXPLODIDA

CÓDIGO DO PRODUTO  
**057103013ATA**

VERSÃO	PADRÃO N° SÉRIE
A	AA 000.000 T09A
B	AA 000.000 T09B



## NOTA:

- Esta lista está sujeita a alterações sem aviso prévio, consultar o site [www.telecontrol.com.br](http://www.telecontrol.com.br) para informações atualizadas.
- Em caso de dúvidas, entrar em contato com o Suporte Técnico.
- Somente os itens que possuem códigos serão fornecidos.

### ITENS DA VISTA EXPLODIDA

Código	Descrição peça	Nº
<b>707658</b>	GAB TRAS TV PH14C	1
<b>707657</b>	GAB FRONT TV PH14C	2
<b>707655</b>	PCI SENSOR(21A2REC.PCB) TV PH14C	4
<b>707368</b>	PCI CINESCOPIO (N05-CRT-1.PCB) V.A	5
<b>707839</b>	PCI CINESCOPIO (N05-CRT-1.PCB)10P V.B	
<b>707659</b>	TECLADO FUNCOES TV PH14C	7
<b>706905</b>	ALTO FAL 8R 5W 1,5" 3"	9
<b>707656</b>	CHAVE MASTER 5A/8A 250V PH14C	10
<b>707367</b>	PCI PRINC(N05-081025) V.A	11
<b>707832</b>	PCI PRINC(N05-090610) V.B	
<b>707301</b>	CINESCOPIO A34AGT13X38 (CHUNGHWA) V.A	12
<b>707841</b>	CINESCOPIO 37SX110Y22-DC15 (IRICO) V.B	
<b>707304</b>	CORD 2X0,75 PR 10A 2M TV PH14B	13

### DEMAIS COMPONENTES FORNECIDOS

Código	Descrição peça	Nº
<b>ACESSÓRIOS</b>		
<b>707660</b>	ANTENA TV 300 Ohm	
<b>707661</b>	BALUN CACHIMBO 300 Ohm -75 Ohm	
<b>707662</b>	CONJ CALCO TV PH14C	
<b>707309</b>	CONTROLE REMOTO TV PH14B	
<b>707334</b>	EMBALAGEM TV PH14C	
<b>707340</b>	MANUAL USUARIO TV PH14C	
<b>707341</b>	GUIA RAPIDO TV PH14C	
<b>705896</b>	CERTIFICADO GARANTIA AUDIO E VIDEO	

## DEMAIS COMPONENTES FORNECIDOS VERSÃO A

Código	Descrição peça	Nº
<b>PCI PRINCIPAL</b>		
707518	CI NT11115PC303BG PH14C	N101
704407	CI CD4053 (DIP16) (PTH)	N801
707519	CI ATML U816 08B PH14C	N102
707520	CI UTC17821 (HSIP012)	N601
707521	CI UTC78040 (TO-220-7H)	N401
707522	CI STR-W6553A	N501
701633	CI 817 OPTO (DIP4)(PTH)	N504
706903	FLY-BACK BSC24-01N40	T471
707523	TRANSISTOR 2SD1555 (TO-3P)	V431
707524	SELETOR ET5C511-M04	A101
707525	TRANSISTOR D880 (TO-220)	V581
707295	TRANSISTOR C1674 (TO-92)(PTH)	V308
702986	TRANSISTOR C1815 (TO-92)(PTH)	V606,V801,V802,V803,V121,V381,V382,V383,V503,V580,V553
707526	TRANSISTOR C1015 (TO-92)	V384,V504,V605
707298	TRANSISTOR C2383 (TO-92)(PTH)	V502,V450
707527	TRAFO CHOPPER BCK35-71115	T501
707528	FILTRO SAW F45C	Z301
707529	CRISTAL 24.576MHz	Z302
707530	CAPAC 150µF/400V ELETROLITICO	C507A
707531	CAPAC 47µF/160V ELETROLITICO	C568
707532	CAPAC 10µF/250V ELETROLITICO	C569
707533	CAPAC 100µF/160V ELETROLITICO	C528
707681	CAPAC 1000µF/25V 105° ELETROLITICO	C562,C563,C161,C564
707740	CAPAC 470µF/35V 105° ELETROLITICO	C558
707741	CAPAC 470µF/16V 105° ELETROLITICO	C509
707742	CAPAC 220µF/35V 105° ELETROLITICO	C406
707683	CAPAC 4,7µF/160V 105° ELETROLITICO	C444
707743	CAPAC 7,5nF/2000V POLIPROPILENO	C435
707744	CAPAC 470nF/100V POLIPROPILENO	C437
707745	CAPAC 330nF/400V POLIPROPILENO	C436
707694	CAPAC 680pF/2KV POLIESTER	C438
707746	CAPAC 220pF/2KV POLIESTER	C435A
707690	CAPAC 2n2F/400V POLIESTER	C515
707692	CAPAC 1nF/1KV POLIESTER	C503,C504
707689	CAPAC 470pF/2KV POLIESTER	C525A
707688	CAPAC 1nF/2KV POLIESTER	C520,C525
707693	CAPAC 470pF/1KV POLIESTER	C553
707698	DIODO RL207 (DO-15)(PTH)	VD503,VD504,VD505,VD506
701725	DIODO FR157 (DO-15)(PTH)	VD518,VD558,VD436,VD562
707695	DIODO FR154 (DO-15)(PTH)	VD565,VD563,VD566,VD564
700259	DIODO 1N4004 (DO-41)(PTH)	VD401
707747	DIODO RU3A (DO-15B)(PTH)	VD559
700167	DIODO 1N4148 (SOD27)(PTH)	VD461,VD517,VD384,VD383,VD382,VD381,VD601,VD444,VD462
707701	ZENER HZ18-2 17,5V 0,5W (DO-35)	VD519
707748	ZENER HZ6C2 6V 0,5W (DO-35)	VD560
707702	ZENER HZ6C3 6,1V 0,5W (DO-35)	VD581
707700	ZENER HZ9A2 7,9V 0,5W (DO-35)	VD483,VD541,VD302
700869	ZENER HZ3C3 3,3V 0,5W (DO-35)	VD540

707704	RESISTOR 2,2K Ohm ½W	R403,R405
707707	RESISTOR 12M Ohm 1W	R531
707749	RESISTOR 1 Ohm 1W	R580
707750	RESISTOR 180 Ohm 1W	R407
707710	RESISTOR 1K Ohm 1W	R441
707751	RESISTOR 150K Ohm 1W	R554
707752	RESISTOR 100K Ohm 1W	R552
707753	RESISTOR 68K Ohm 1W	R520,R521
707754	RESISTOR 10K Ohm 2W	R524
707712	RESISTOR 1 Ohm 2W	R561
707715	RESISTOR 1,8 Ohm 2W	R459
707755	RESISTOR 260 Ohm 2W	R454
707756	RESISTOR 0,47 Ohm 2W	R165
707713	RESISTOR 15K Ohm 2W	R703
707757	RESISTOR 5,1 Ohm 2W	R526
707758	RESISTOR 5,6 Ohm 3W	R522
707720	RESISTOR 12 Ohm 3W	R586
707759	RESISTOR 2,2 Ohm 3W	R480
707760	RESISTOR 8,2 Ohm 5W PORCELANA	VD452
707723	PTC MZ73BHL-9RM	RT501
707761	NTC MF72-2 7D12M	R502
707725	TRIMPOT 2K Ohm	RP551
707762	TRANS DRIVER HORIZONTAL UU10,5	T431
707763	INDUTOR 37µH	L441
707728	INDUTOR 1µH	L302
707729	INDUTOR 10µH	L312,L303,L320,L322,L323,L436
707731	FUSIVEL RET 3,15A250V 5X20 VIDRO	FU501
<b>PCI CINESCOPIO</b>		
707534	TRANSISTOR C2482 (TO-92)	V911,V921,V931
707535	TRANSISTOR BF423 (TO-92)	V913,V923,V933
707536	TRANSISTOR BF422 (TO-92)	V912,V922,V932
707713	RESISTOR 15K Ohm 2W	R915,R925,R935
707764	SOQUETE CRT TV PH14C MINI-NEC	SX904

## DEMAIS COMPONENTES FORNECIDOS VERSÃO B

Código	Descrição peça	Nº
<b>PCI PRINCIPAL</b>		
<b>707518</b>	CI NT11115PC303BG PH14C	N101
<b>700888</b>	CI HCF4052BE	N801
<b>707519</b>	CI ATML U816 08B PH14C	N102
<b>707520</b>	CI UTC17821 (HSIP012)	N601
<b>707521</b>	CI UTC78040 (TO-220-7H)	N401
<b>707522</b>	CI STR-W6553A	N501
<b>701633</b>	CI 817 OPTO (DIP4)(PTH)	N504
<b>706903</b>	FLY-BACK BSC24-01N40	T471
<b>707523</b>	TRANSISTOR 2SD1555 (TO-3P)	V431
<b>707524</b>	SELETOR ET5C511-M04	A101
<b>707525</b>	TRANSISTOR D880 (TO-220)	V581
<b>707295</b>	TRANSISTOR C1674 (TO-92)(PTH)	V308
<b>702986</b>	TRANSISTOR C1815 (TO-92)(PTH)	V606,V801,V802,V803,V121,V381,V382,V383,V503,V580
<b>707526</b>	TRANSISTOR C1015 (TO-92)	V384,V504,V605
<b>707298</b>	TRANSISTOR C2383 (TO-92)(PTH)	V502,V505
<b>707527</b>	TRAFO CHOPPER BCK35-71115	T501
<b>707528</b>	FILTRO SAW F45C	Z301
<b>707529</b>	CRISTAL 24.576MHz	Z302
<b>707530</b>	CAPAC 150uF/400V ELETROLITICO	C507A
<b>707531</b>	CAPAC 47uF/160V ELETROLITICO	C568
<b>707532</b>	CAPAC 10uF/250V ELETROLITICO	C569A
<b>707533</b>	CAPAC 100uF/160V ELETROLITICO	C528
<b>707681</b>	CAPAC 1000uF/25V 105° ELETROLITICO	C562,C563,C161,C564
<b>707740</b>	CAPAC 470uF/35V 105° ELETROLITICO	C558
<b>707741</b>	CAPAC 470uF/16V 105° ELETROLITICO	C509
<b>707742</b>	CAPAC 220uF/35V 105° ELETROLITICO	C406
<b>707683</b>	CAPAC 4,7uF/160V 105° ELETROLITICO	C444
<b>707833</b>	CAPAC 10nF/2000V POLIPROPILENO	C438
<b>707744</b>	CAPAC 470nF/100V POLIESTER	C437
<b>707834</b>	CAPAC 390nF/400V POLIESTER	C436
<b>707835</b>	CAPAC 33pF/2KV CERAMICO	C435
<b>707836</b>	CAPAC 2n2F/250V CERAMICO	C515
<b>707692</b>	CAPAC 1nF/1KV CERAMICO	C503,C504
<b>707689</b>	CAPAC 470pF/2KV CERAMICO	C525A
<b>707688</b>	CAPAC 1nF/2KV CERAMICO	C520,C525,C435A
<b>707693</b>	CAPAC 470pF/1KV CERAMICO	C553
<b>707698</b>	DIODO RL207 (DO-15)(PTH)	VD503,VD504,VD505,VD506
<b>701725</b>	DIODO FR157 (DO-15)(PTH)	VD518,VD558
<b>707695</b>	DIODO FR154 (DO-15)(PTH)	VD565,VD563,VD566,VD564,VD436,VD562
<b>700259</b>	DIODO 1N4004 (DO-41)(PTH)	VD401
<b>707747</b>	DIODO RU3A (DO-15B)(PTH)	VD559

<b>700167</b>	DIODO 1N4148 (SOD27)(PTH)	VD461,VD517,VD383,VD382
<b>707701</b>	DIODO ZENER HZ18-2 17,5V (DO-35)	VD519
<b>707702</b>	DIODO ZENER HZ6C3 6,1V (DO-35)	VD560
<b>707837</b>	DIODO ZENER HZ6B1 5,5V (DO-35)	VD581
<b>707700</b>	DIODO ZENER HZ9A2 7,9V (DO-35)	VD483,VD541,VD302
<b>700869</b>	DIODO ZENER HZ3C3 3,3V (DO-35)	VD540
<b>700261</b>	DIODO ZENER HZ6B2 5,6V (DO-35)	VD502
<b>707704</b>	RESISTOR 2,2K Ohm 0,5W	R403,R405
<b>707707</b>	RESISTOR 12M Ohm 1W	R531
<b>707749</b>	RESISTOR 1 Ohm 1W	R580
<b>707750</b>	RESISTOR 180 Ohm 1W	R407
<b>707710</b>	RESISTOR 1K Ohm 1W	R441
<b>707751</b>	RESISTOR 150K Ohm 1W	R554
<b>707752</b>	RESISTOR 100K Ohm 1W	R552
<b>707753</b>	RESISTOR 68K Ohm 1W	R520,R521
<b>707754</b>	RESISTOR 10K Ohm 2W	R524
<b>707712</b>	RESISTOR 1 Ohm 2W	R561
<b>707715</b>	RESISTOR 1,8 Ohm 2W	R459
<b>707755</b>	RESISTOR 270 Ohm 2W	R454
<b>707756</b>	RESISTOR 0,47 Ohm 2W	R165
<b>707713</b>	RESISTOR 15K Ohm 2W	R703
<b>707757</b>	RESISTOR 5,1 Ohm 2W	R526
<b>707758</b>	RESISTOR 5,6 Ohm 3W	R522
<b>707720</b>	RESISTOR 12 Ohm 3W	R586
<b>707838</b>	RESISTOR 8,2 Ohm 3W	R480
<b>707760</b>	RESISTOR 8,2 Ohm 5W PORCELANA	VD452
<b>707723</b>	PTC MZ73BHL-9RM	RT501
<b>707724</b>	NTC MF72 7D13	R502
<b>707725</b>	TRIMPOT 2K Ohm	RP551
<b>707762</b>	TRANS DRIVER HORIZONTAL UU10,5	T431
<b>707763</b>	INDUTOR 37µH	L441
<b>707728</b>	INDUTOR 1µH	L302
<b>707731</b>	FUSIVEL RET 3,15A250V 5X20 VIDRO	FU501
<b>PCI CINESCOPIO</b>		
<b>707840</b>	SOQUETE CRT TV PH14C 10P	SX904
<b>707534</b>	TRANSISTOR C2482 (TO-92)	V911,V921,V931
<b>707535</b>	TRANSISTOR BF423 (TO-92)	V913,V923,V933
<b>707536</b>	TRANSISTOR BF422 (TO-92)	V912,V922,V932
<b>707713</b>	RESISTOR 15KOhm 2W	R915,R925,R935

