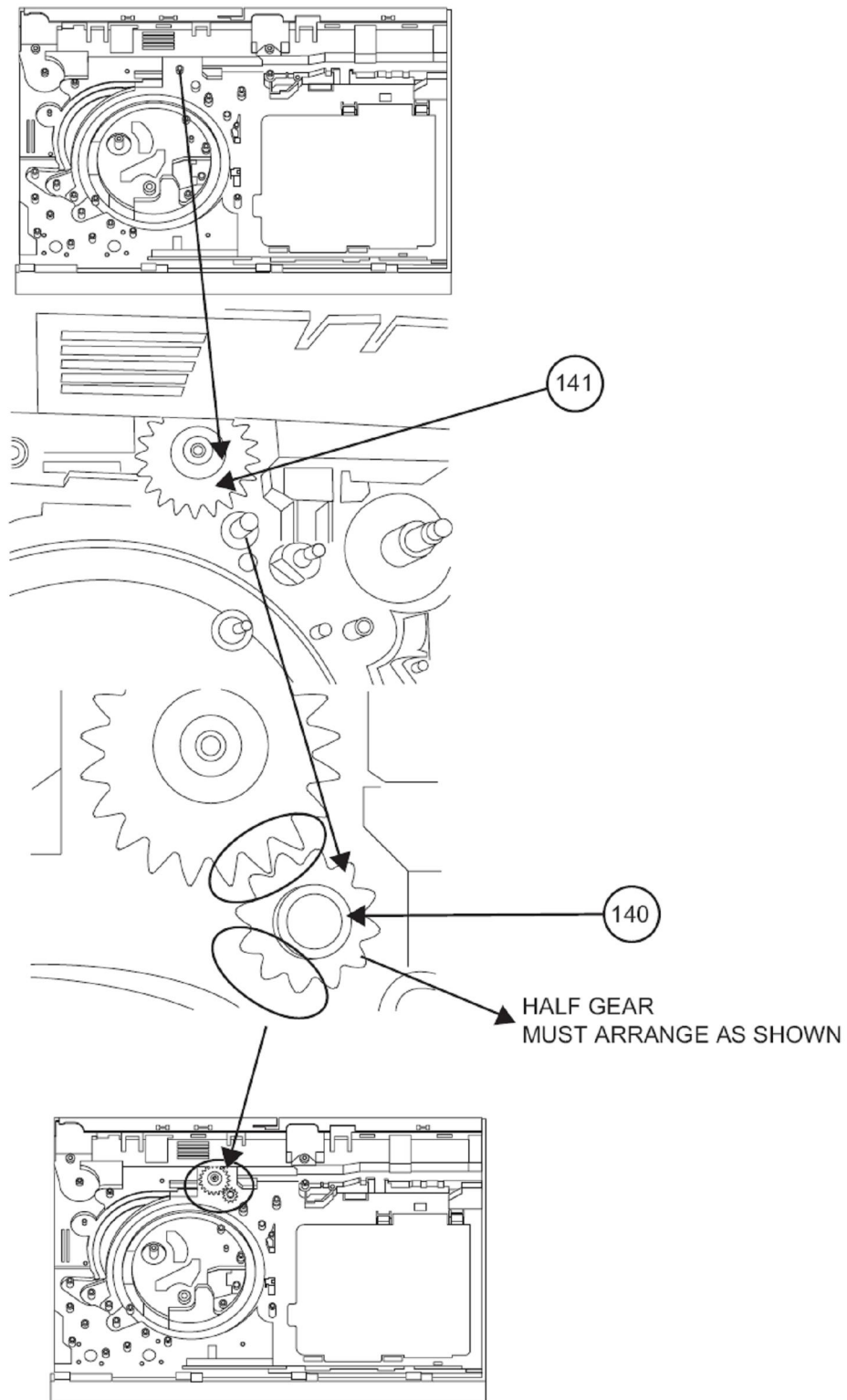


## **Puesta a tiempo mecanismo tipo escalera de 5 CDs Sharp**

Estas graficas que verán a continuación las obtuve del diagrama para un equipo de sonido Sharp, modelo CD-SW200, pero que también estas imágenes vienen en otros esquemas como: CD-MPS1000 y XL-UH240, y no se que otros modelos mas de Sharp lo puedan traer, lo recopilé así porque este mecanismo es bastante complicado y es mas fácil trabajarle teniéndolo en un solo documento espero te sea de utilidad.

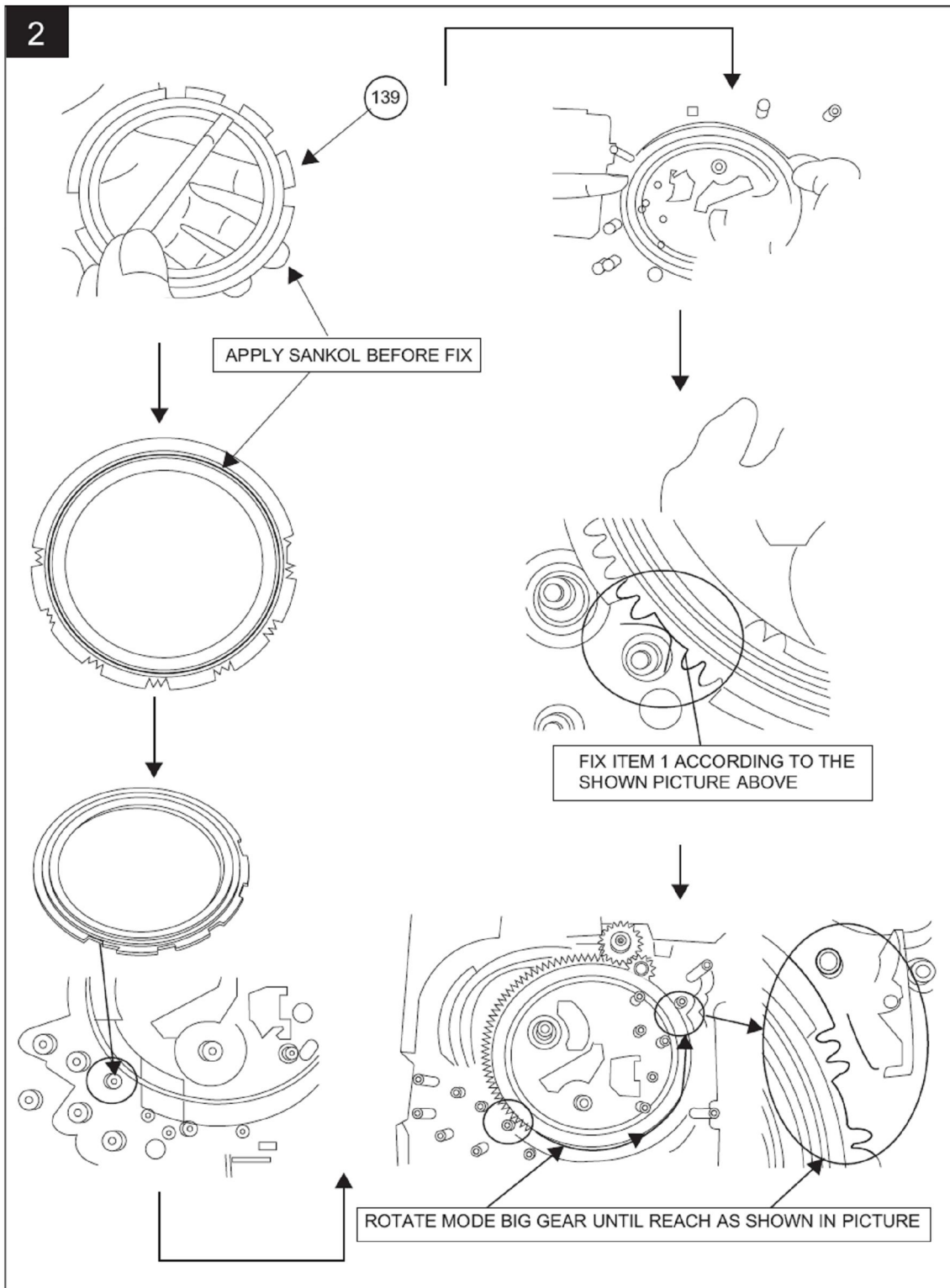
[13norte.blogspot.com](http://13norte.blogspot.com)

1

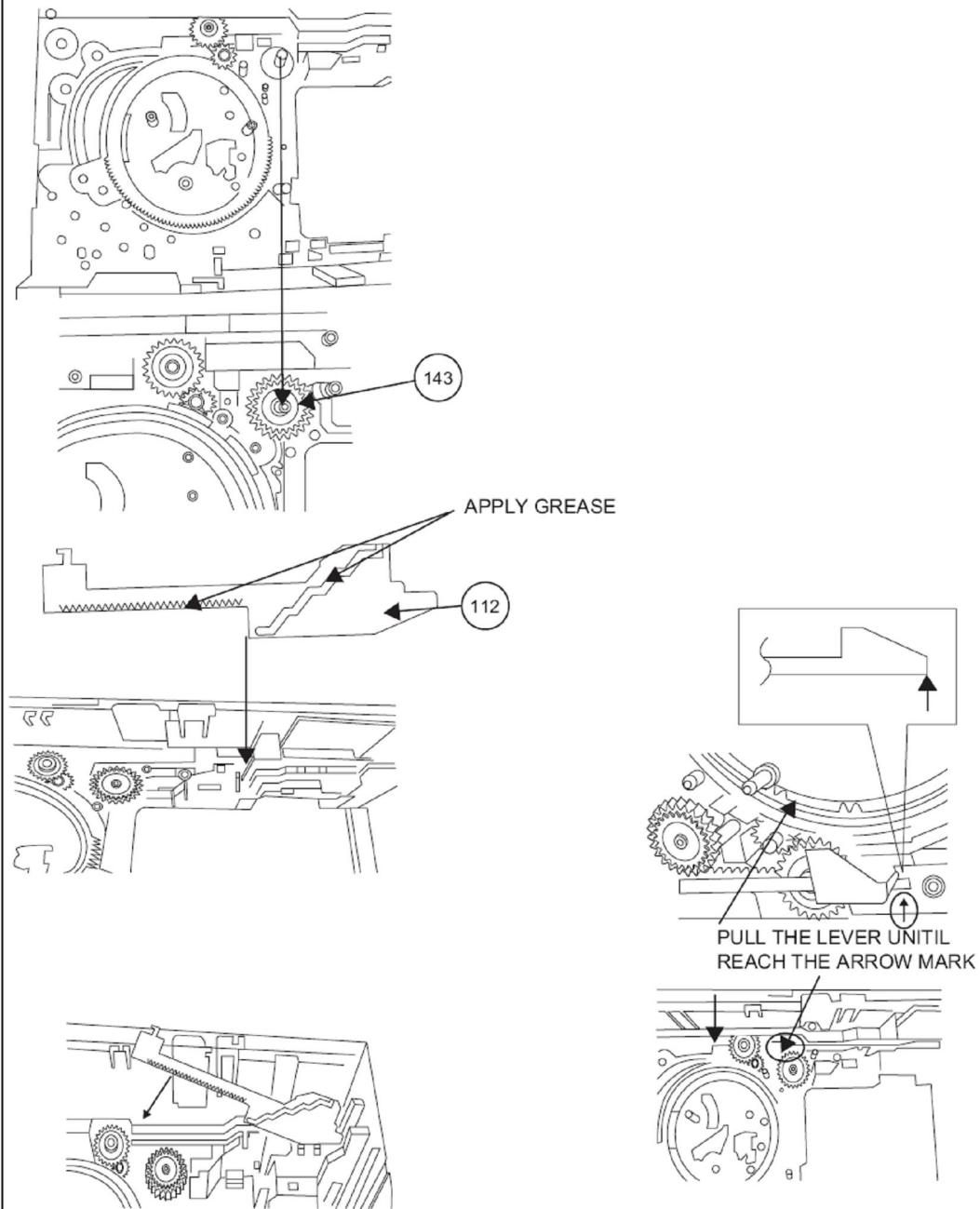


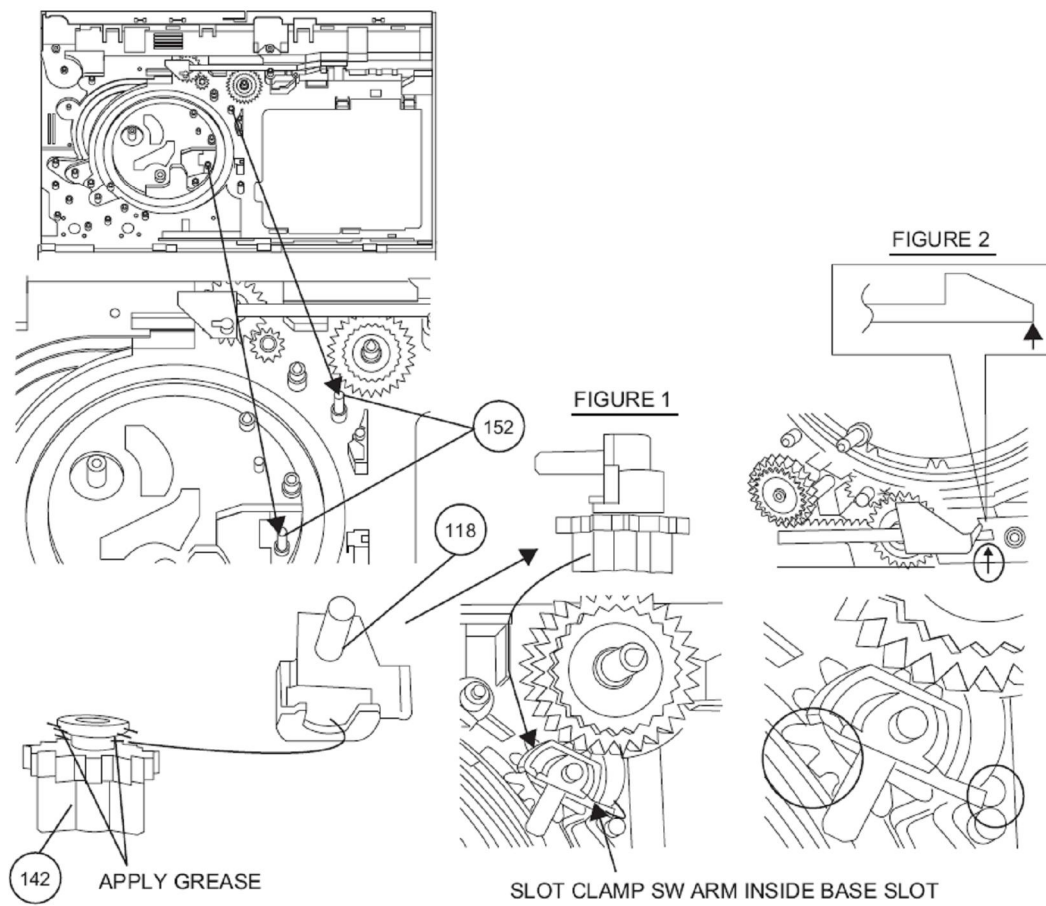
[13norte.blogspot.com](http://13norte.blogspot.com)

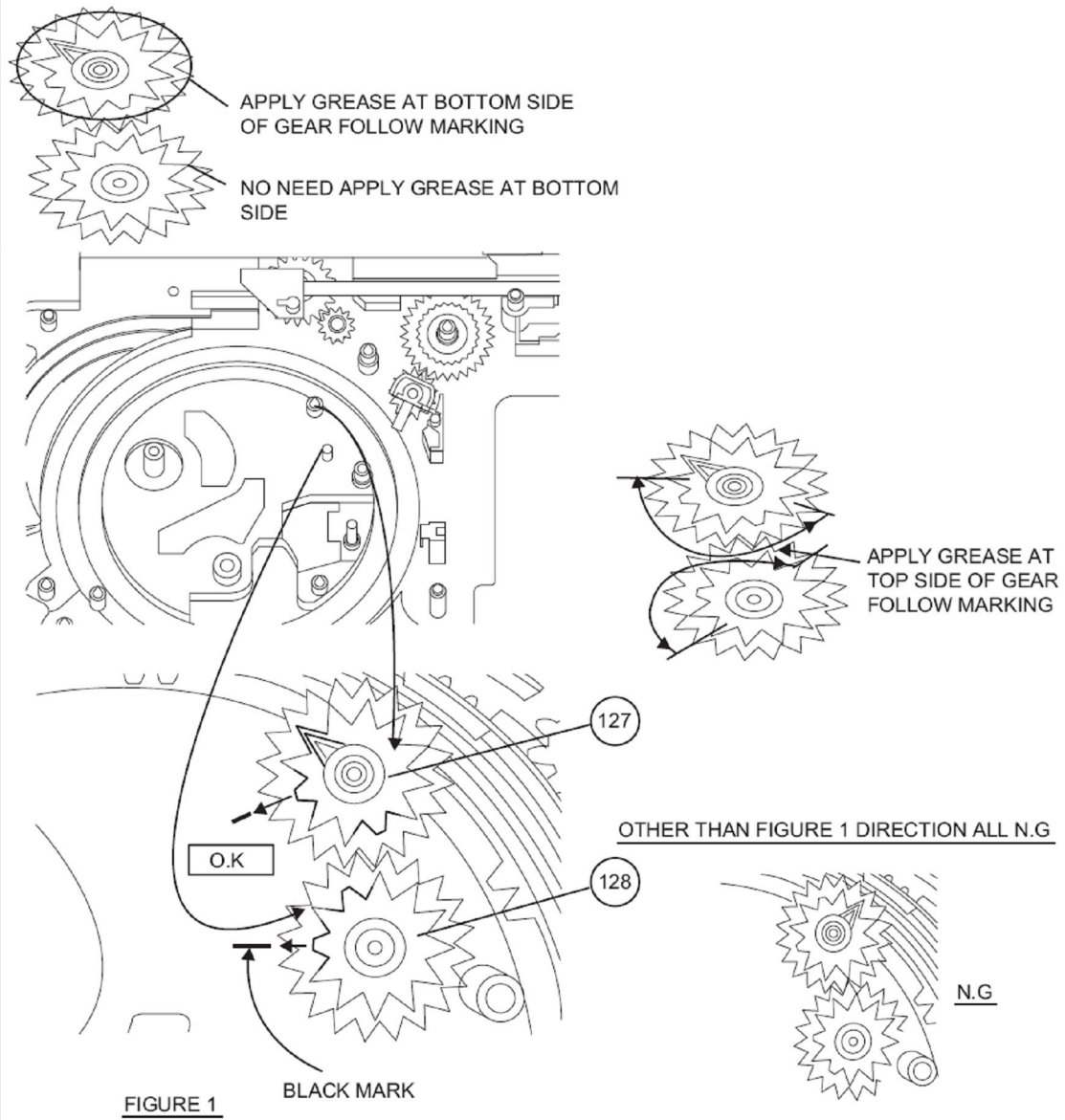
2

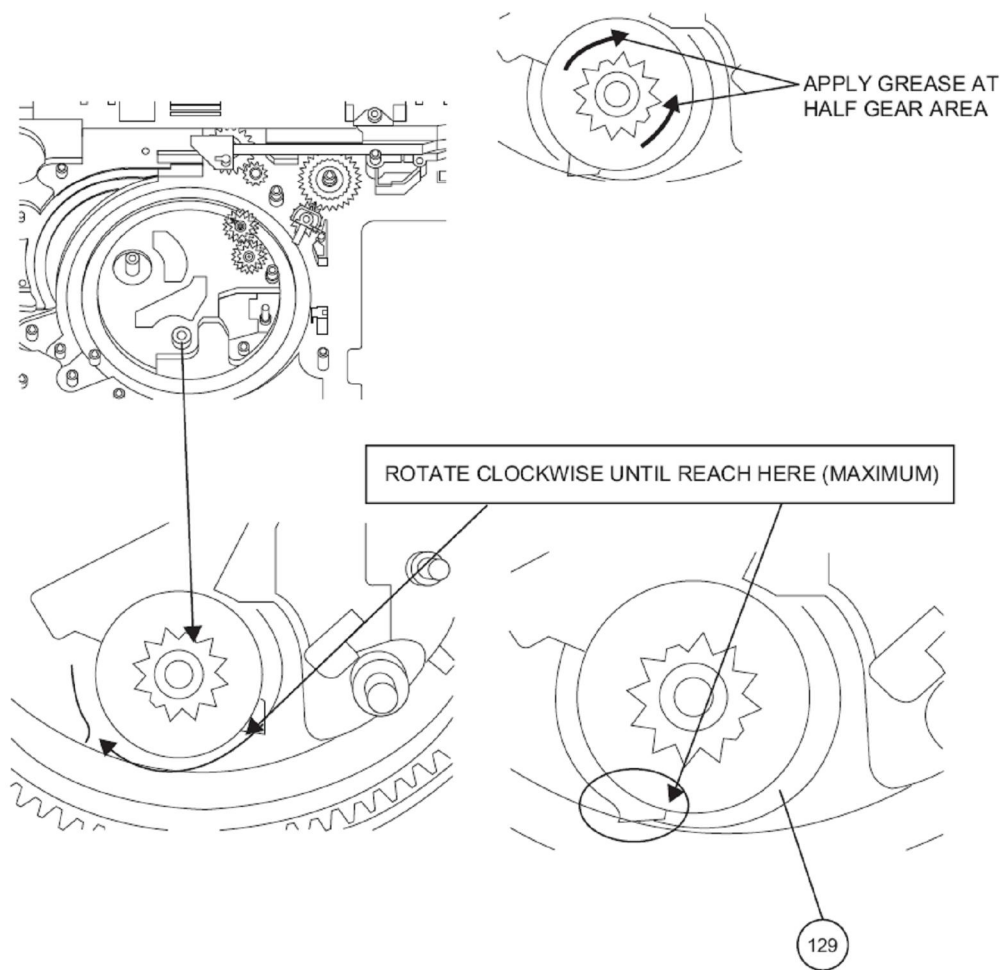


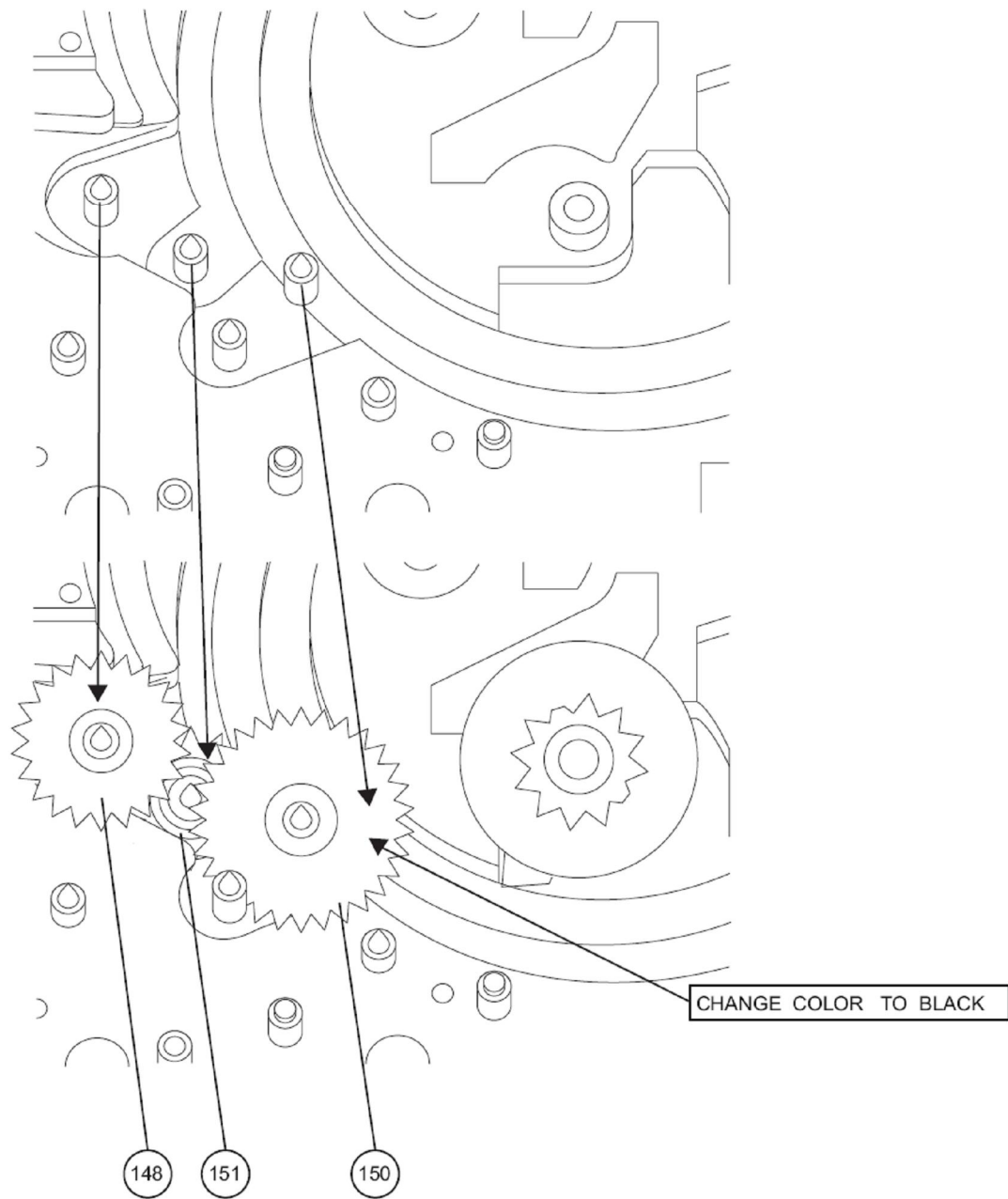
[13norte.blogspot.com](http://13norte.blogspot.com)



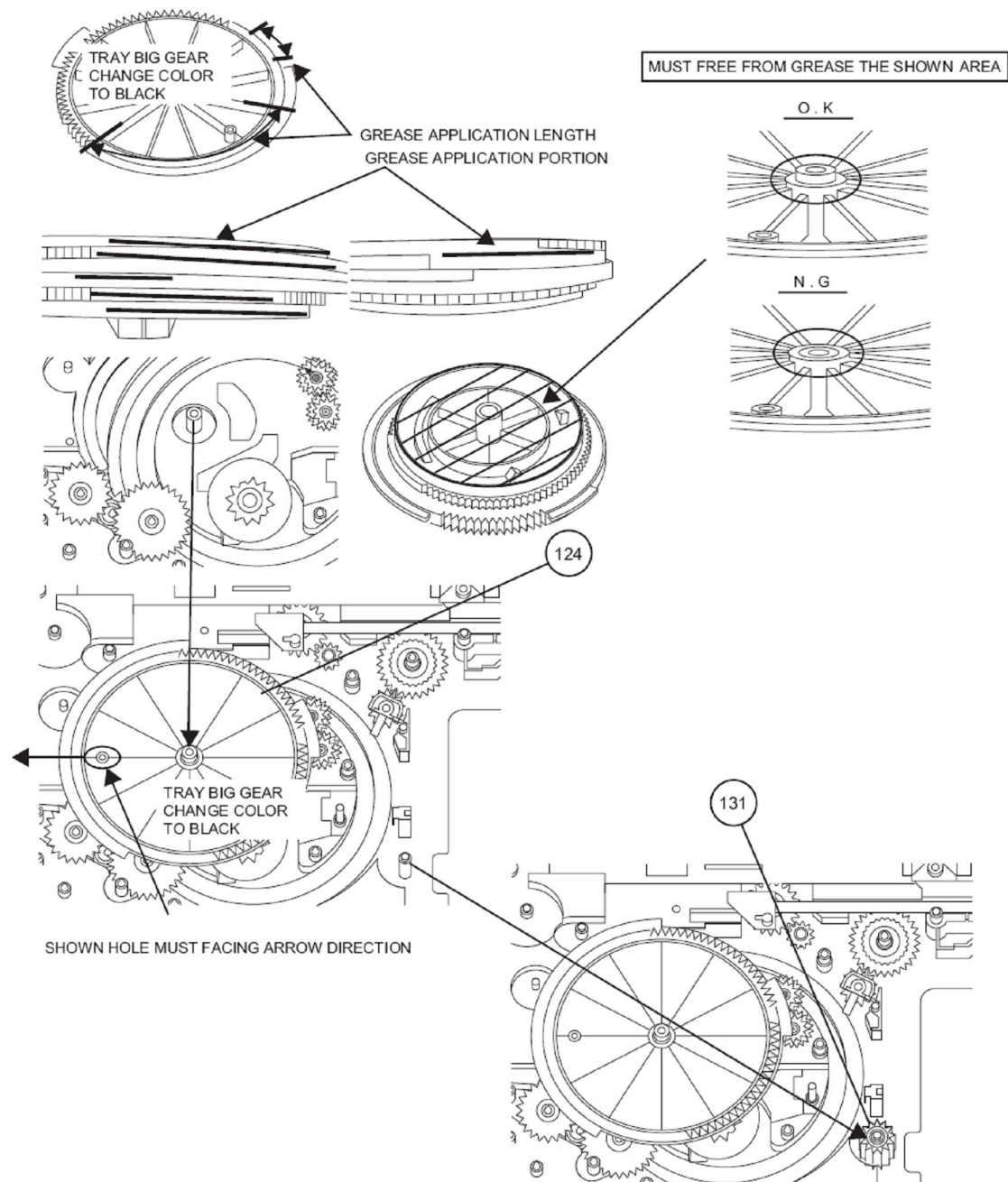


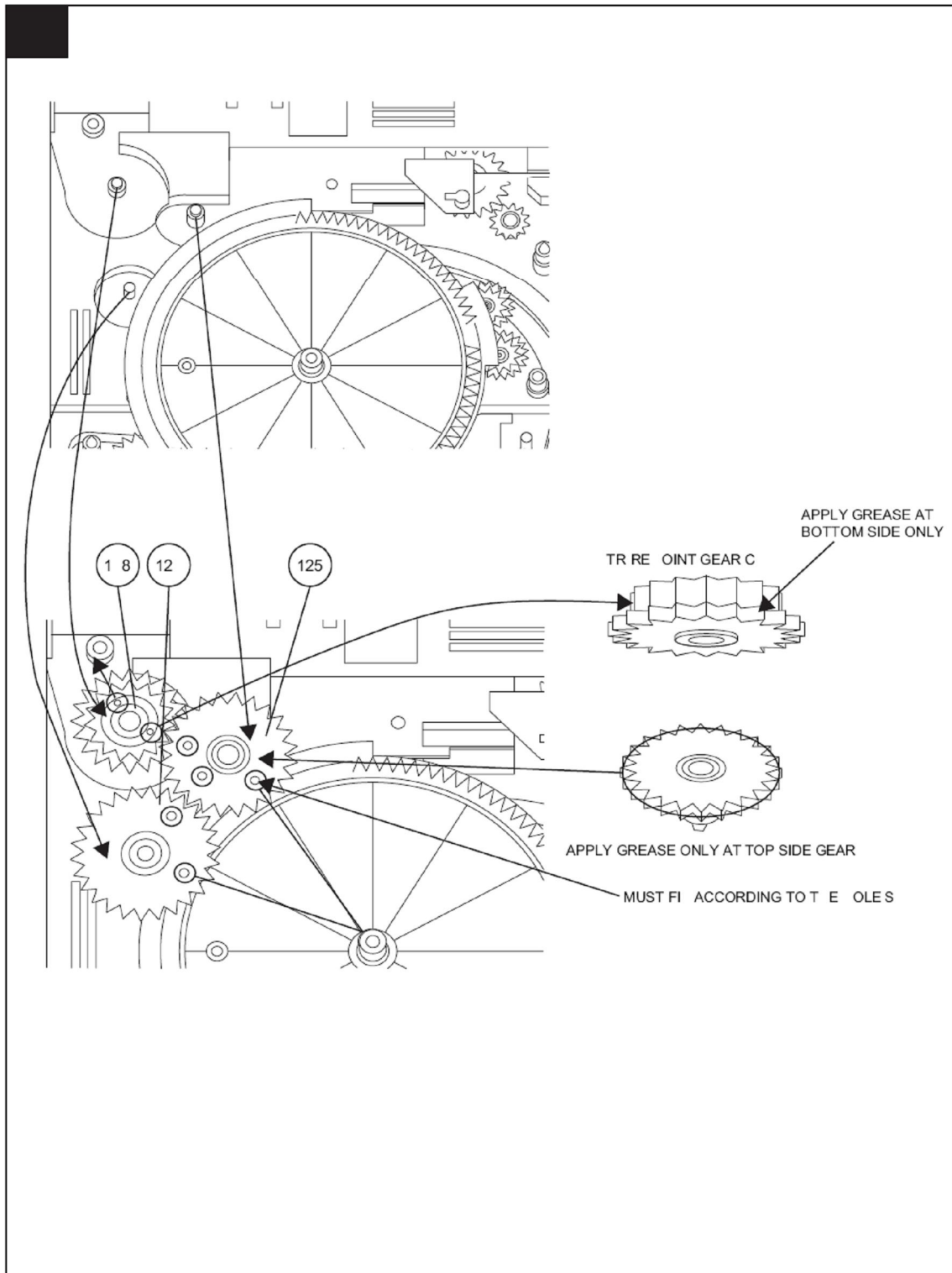




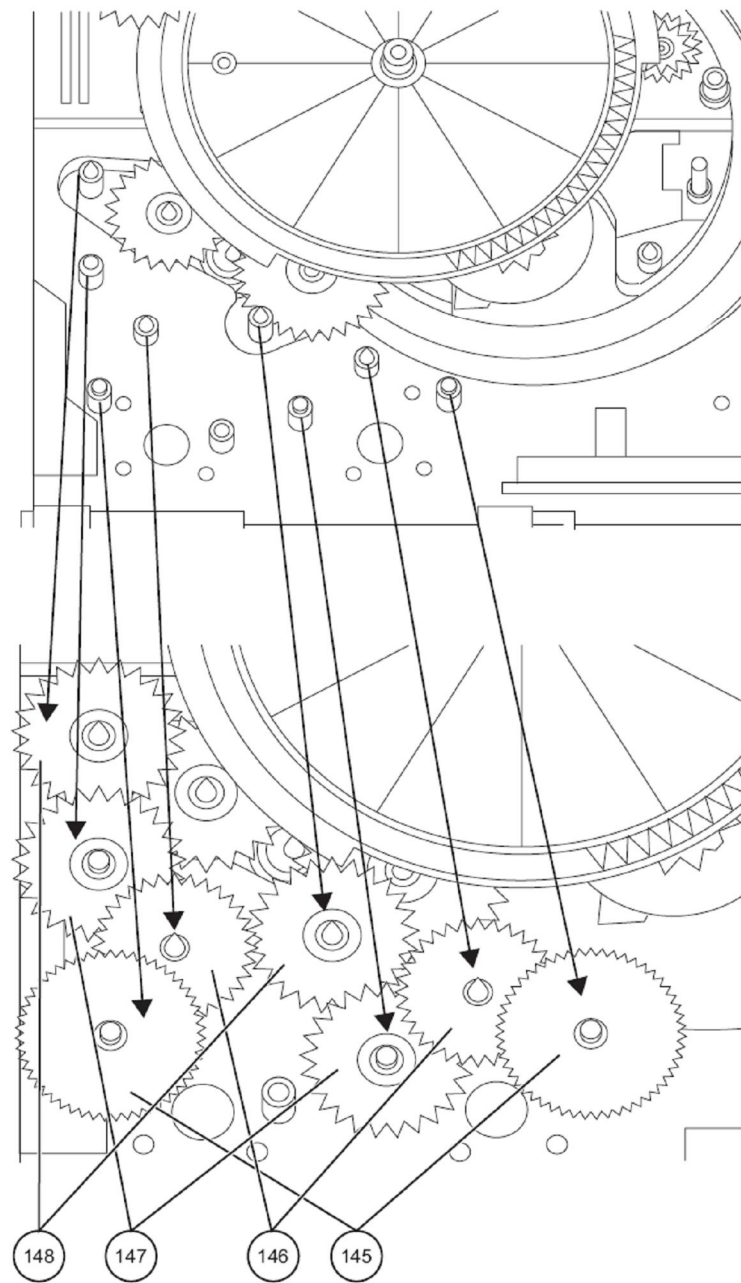




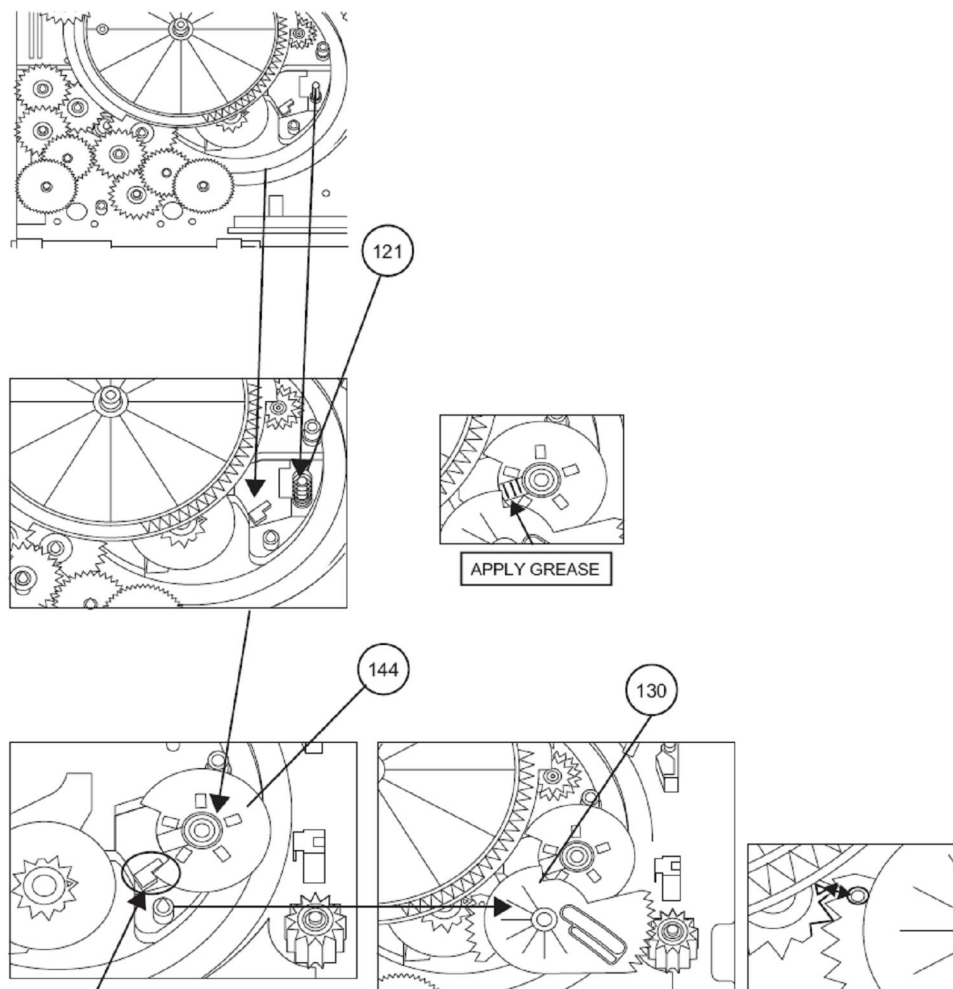




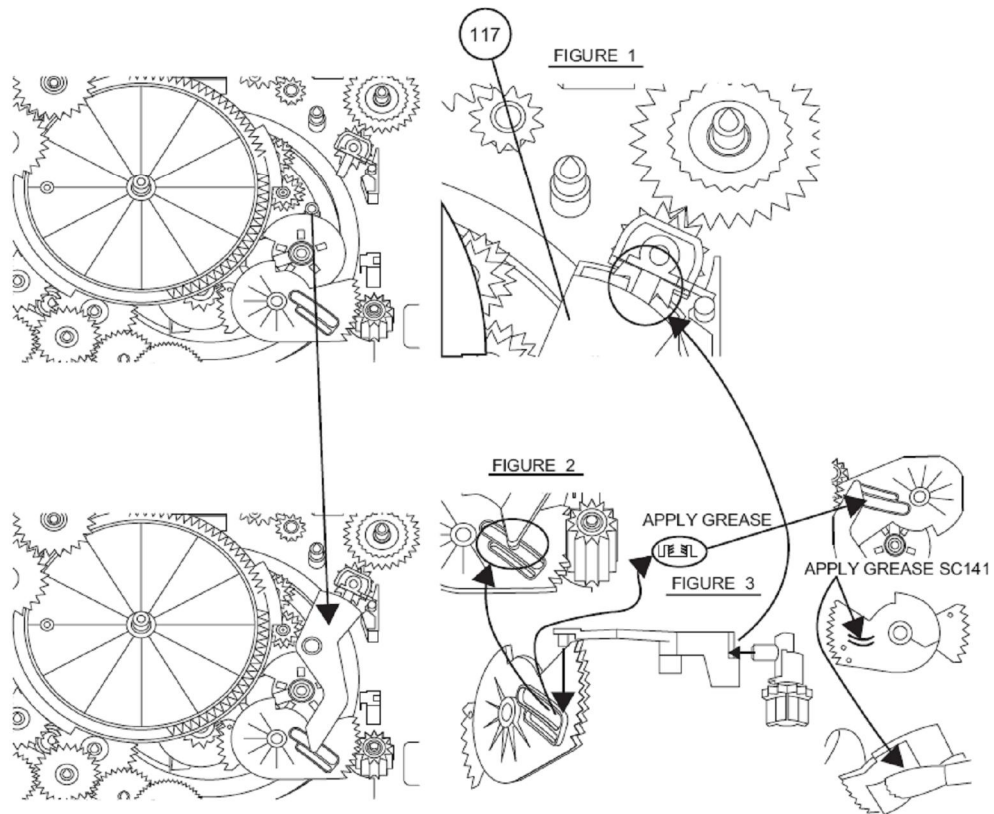
[13norte.blogspot.com](http://13norte.blogspot.com)

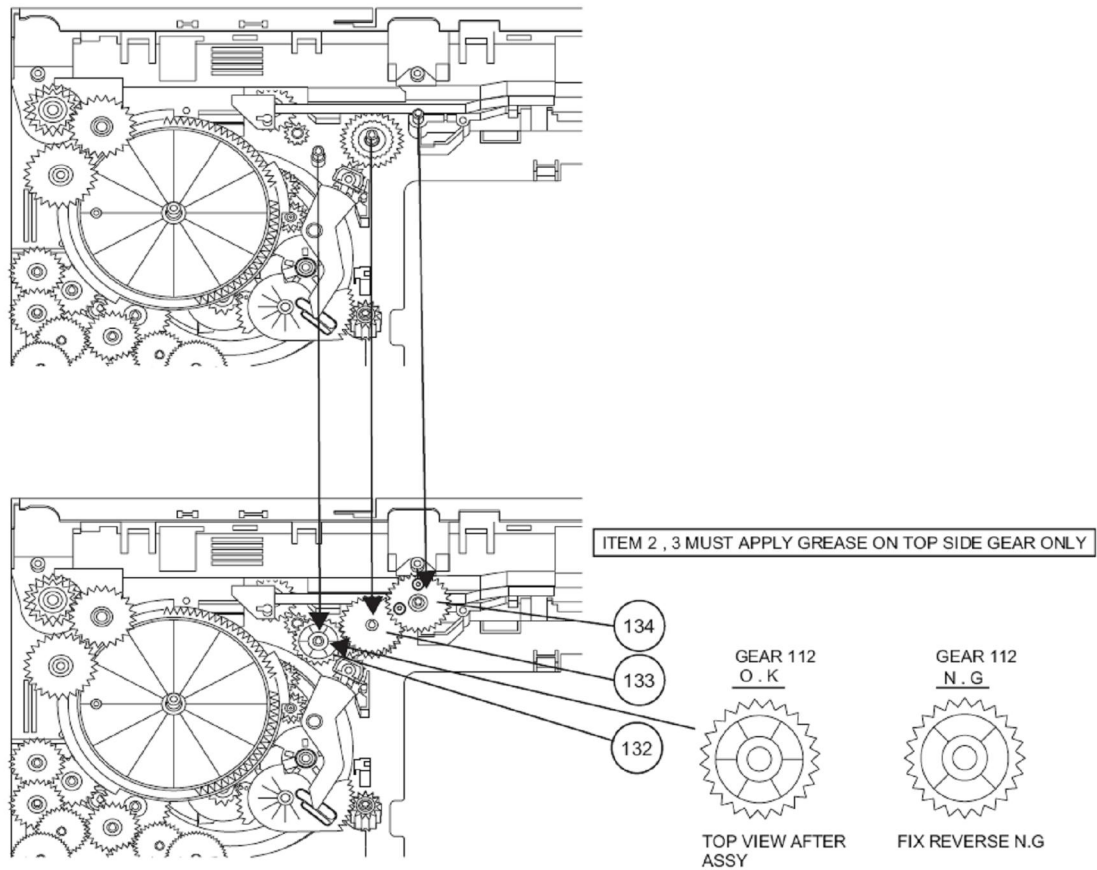


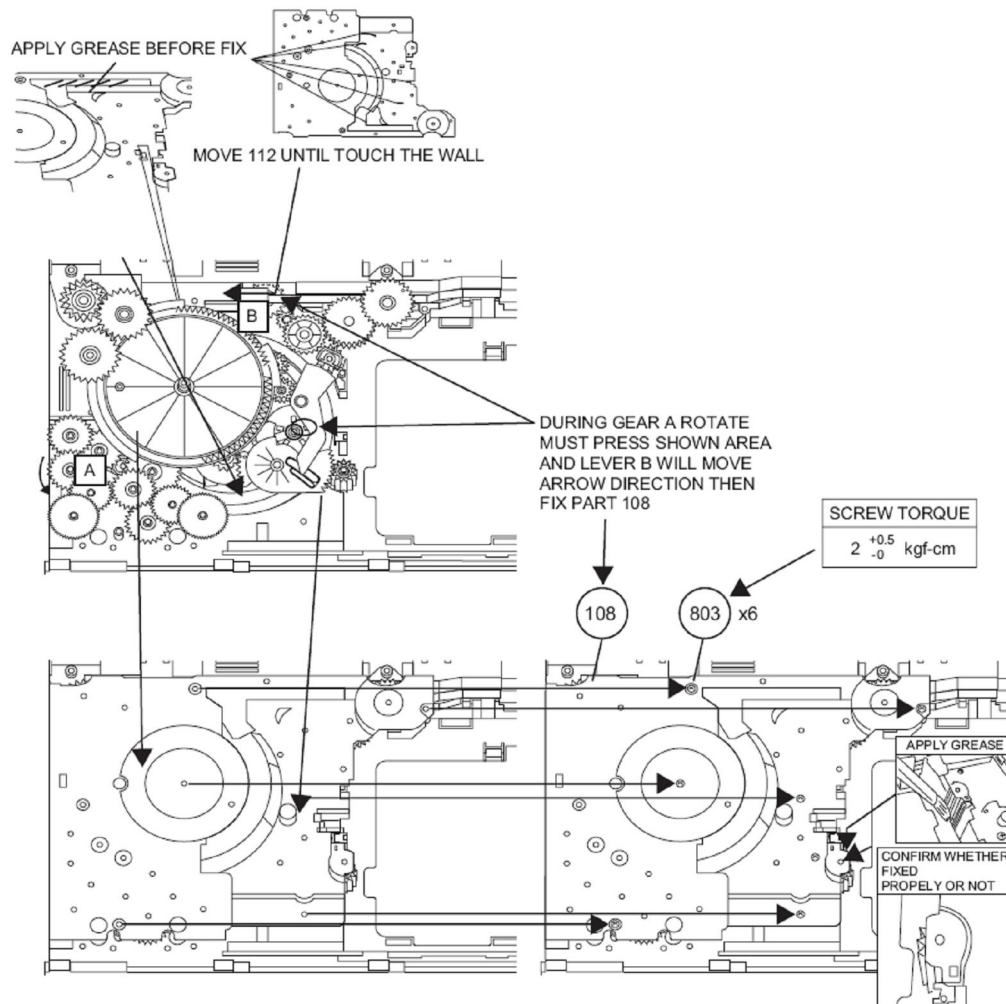
[13norte.blogspot.com](http://13norte.blogspot.com)



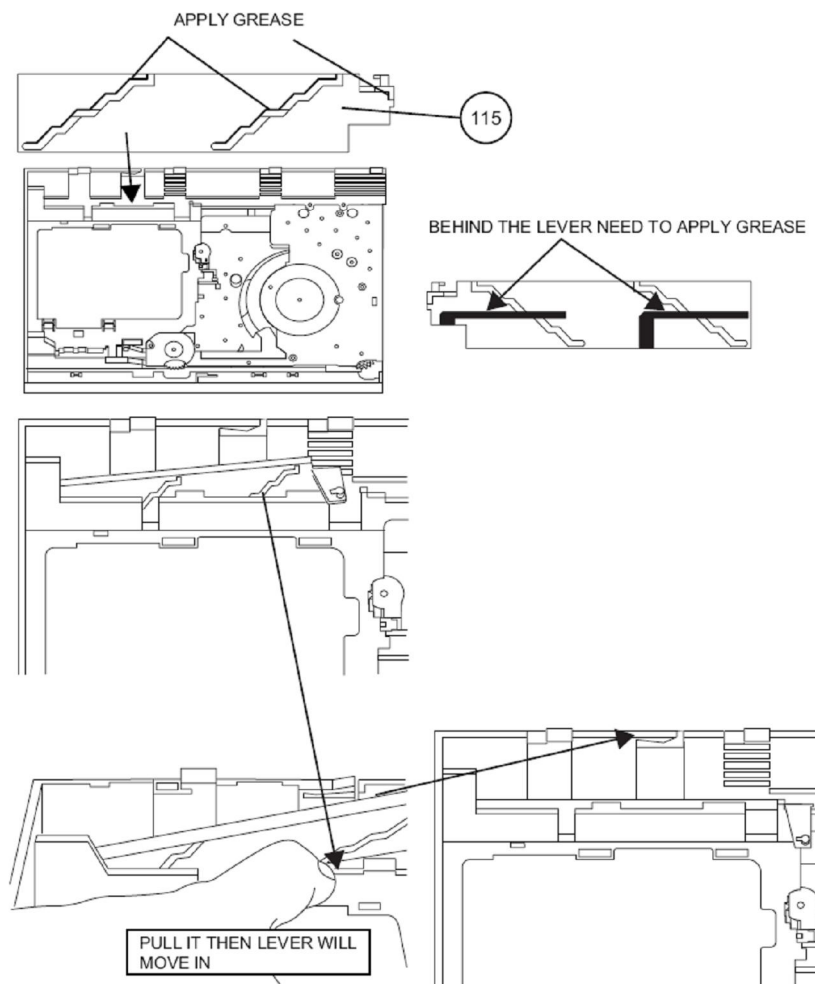
WHEN FIXING ITEM 2 MUST FOLLOW AS SHOWN





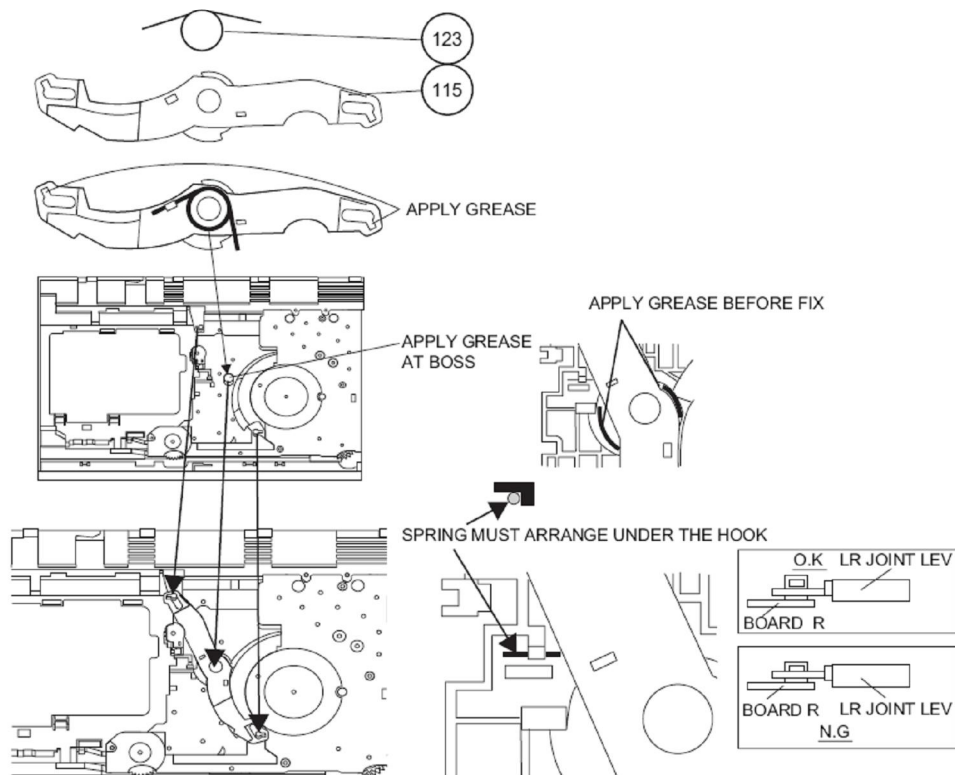


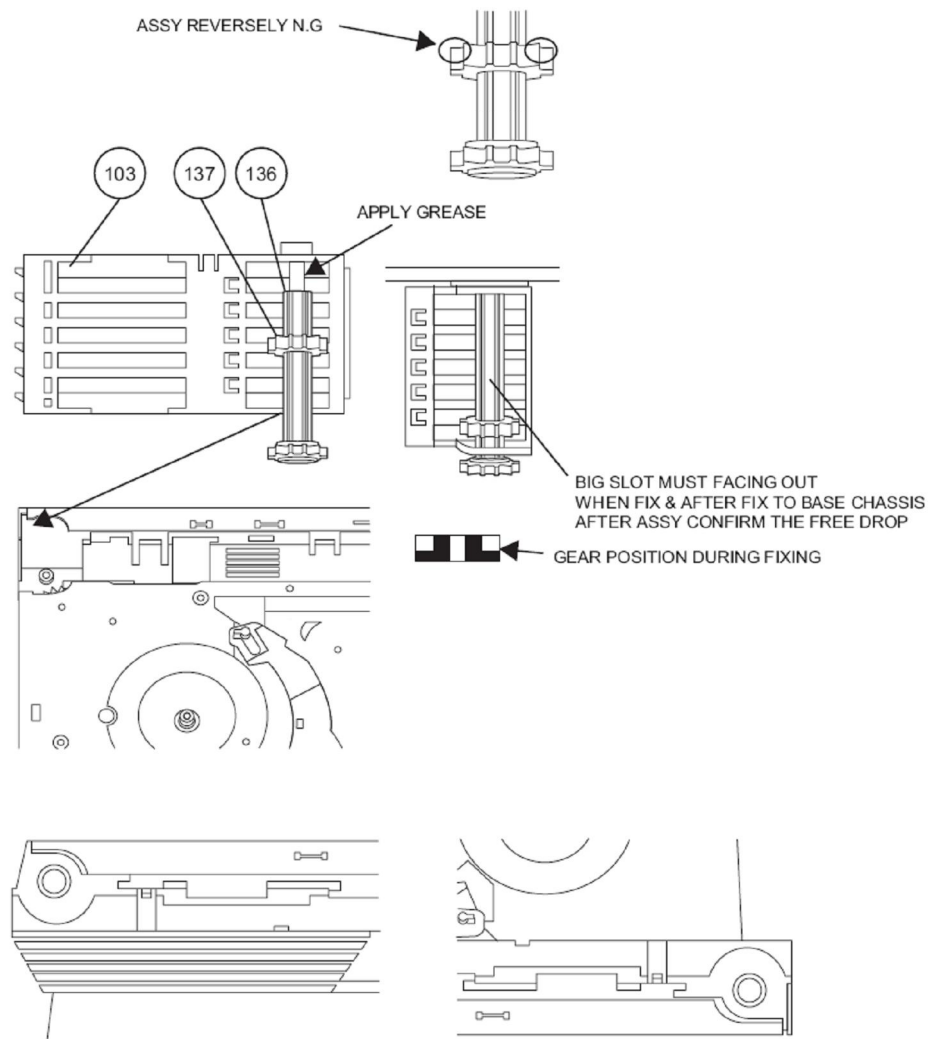


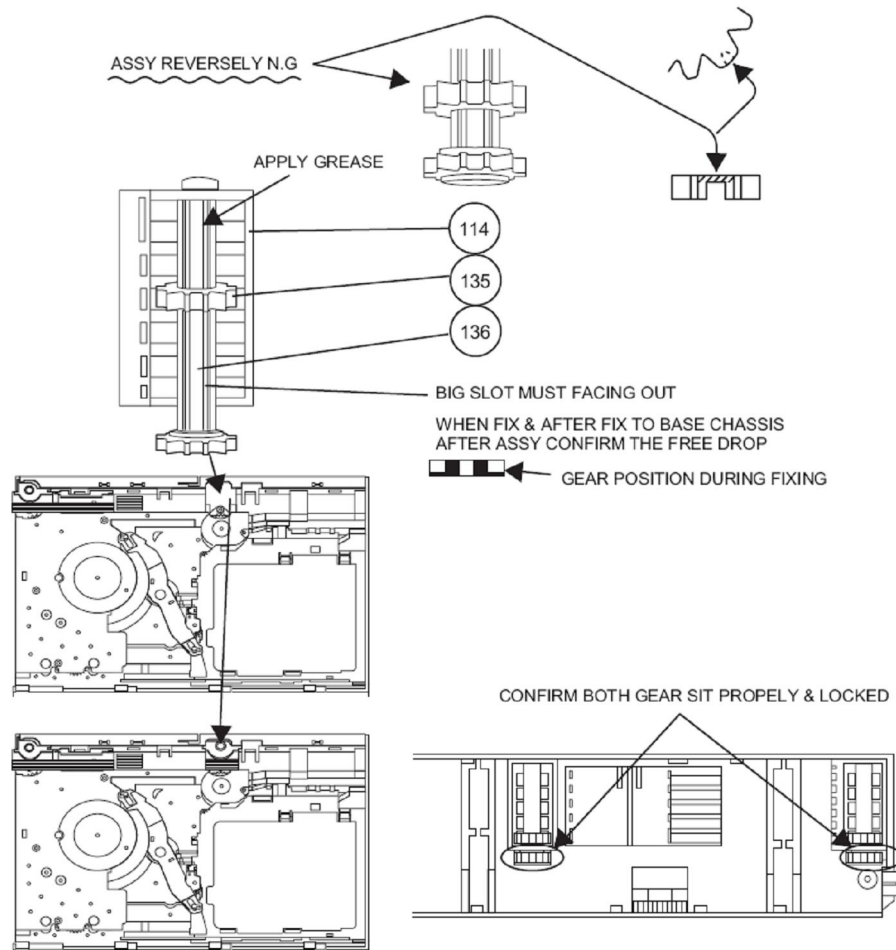


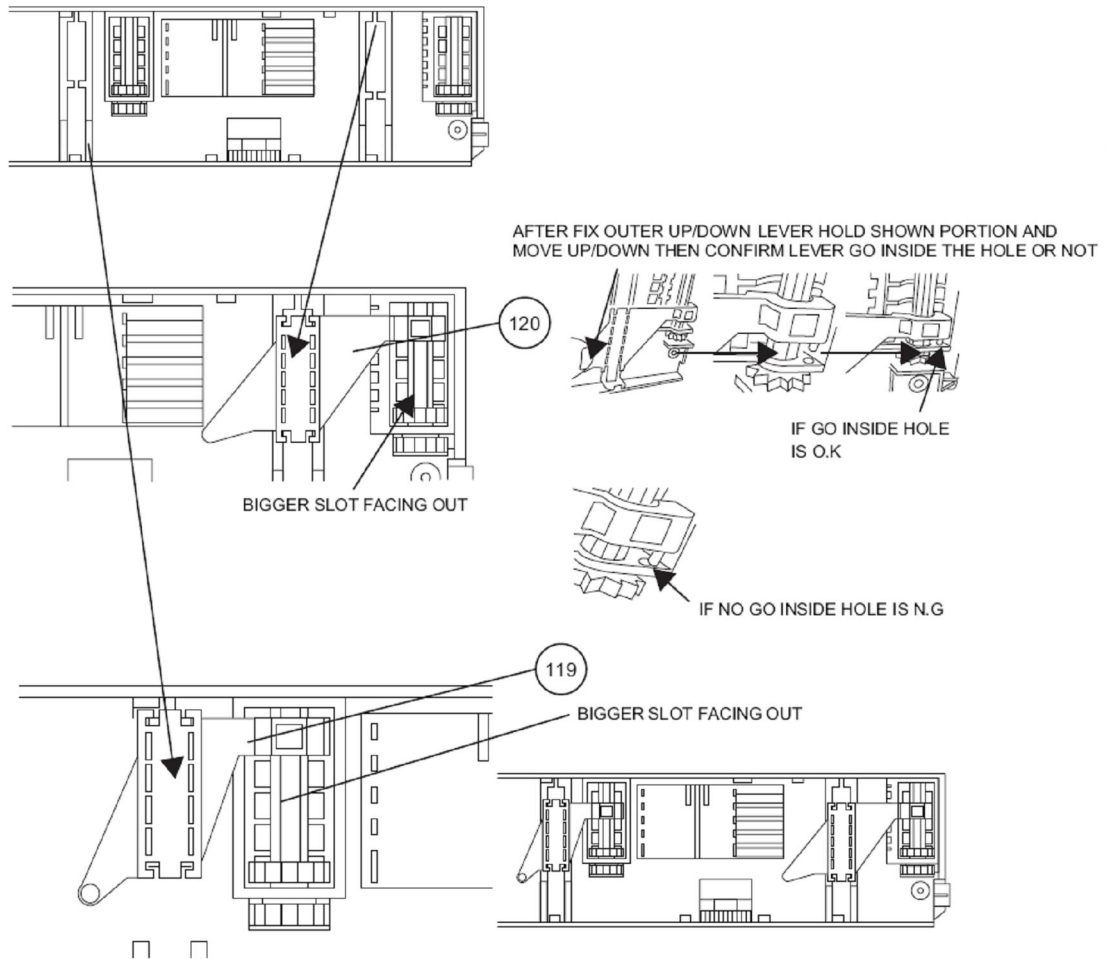
[13norte.blogspot.com](http://13norte.blogspot.com)

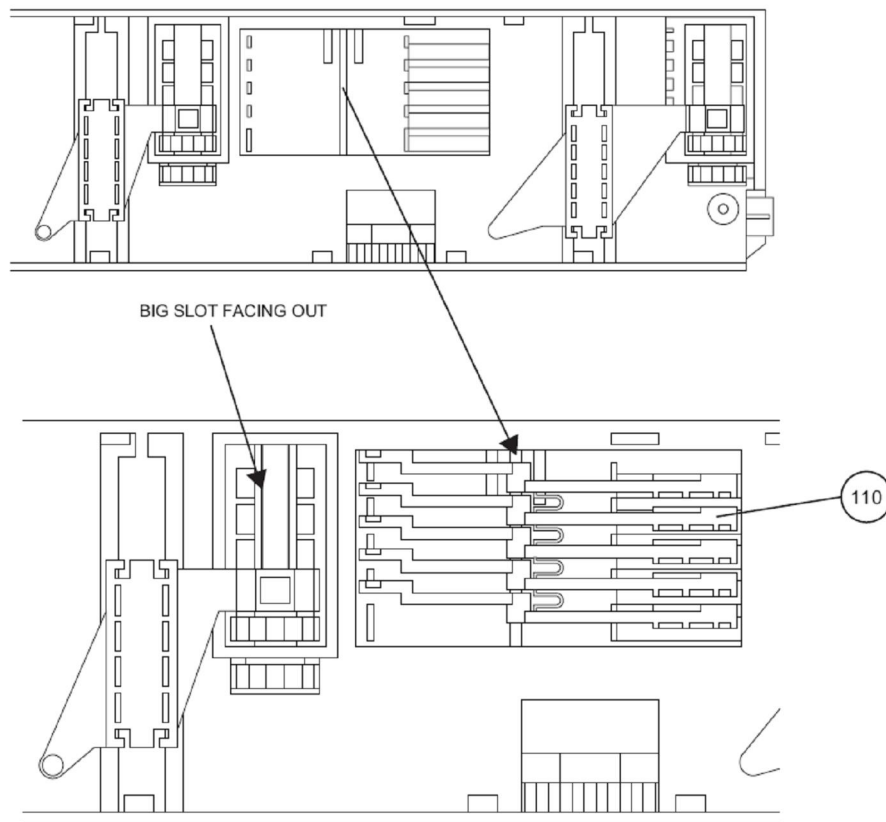




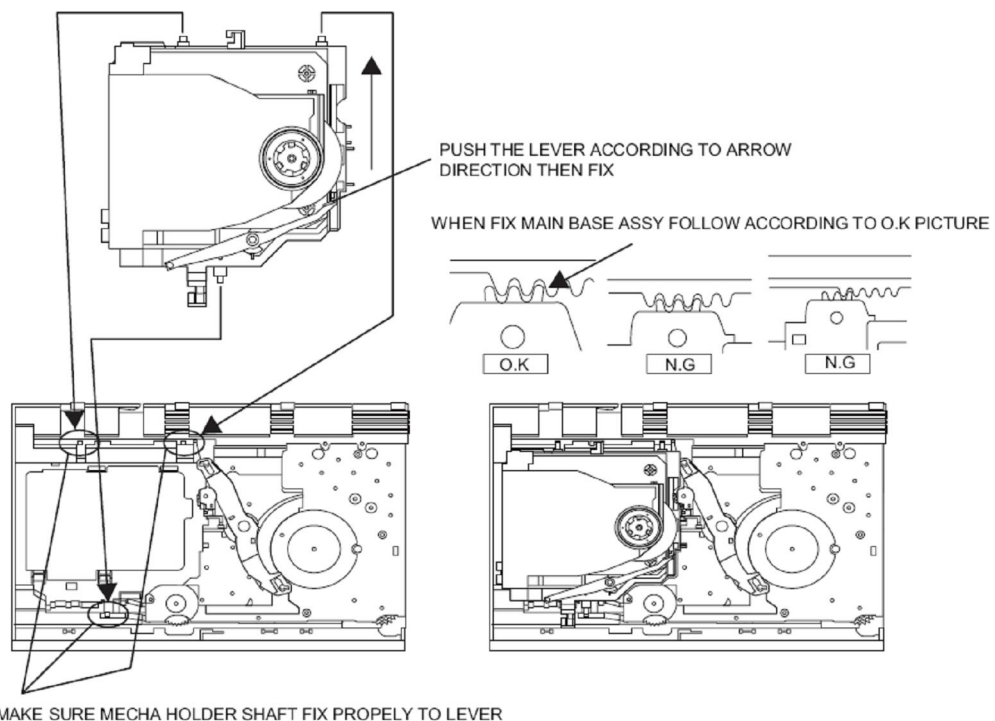


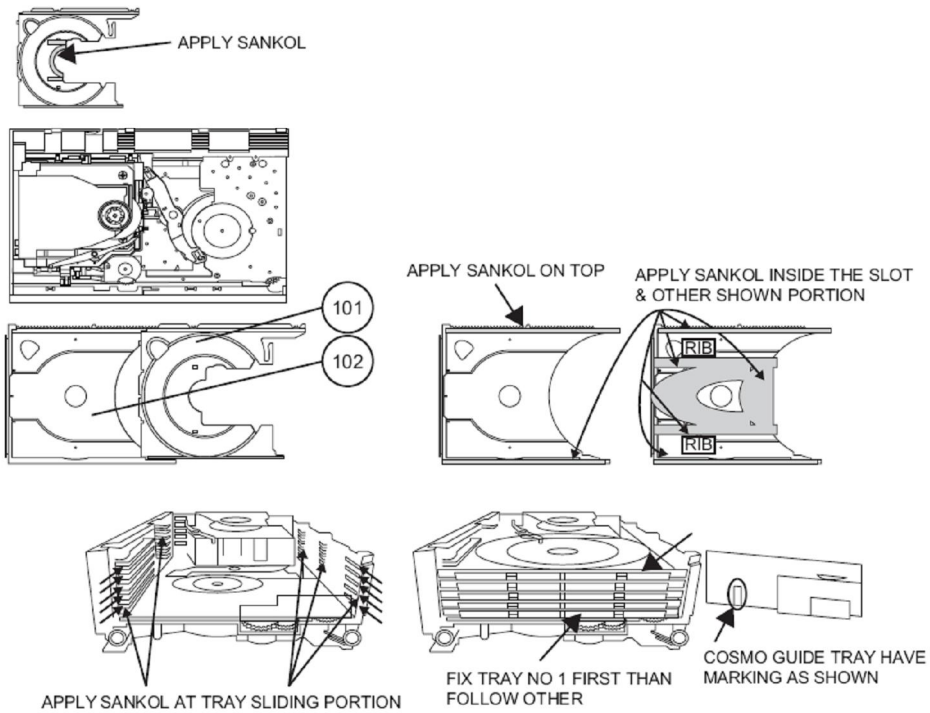


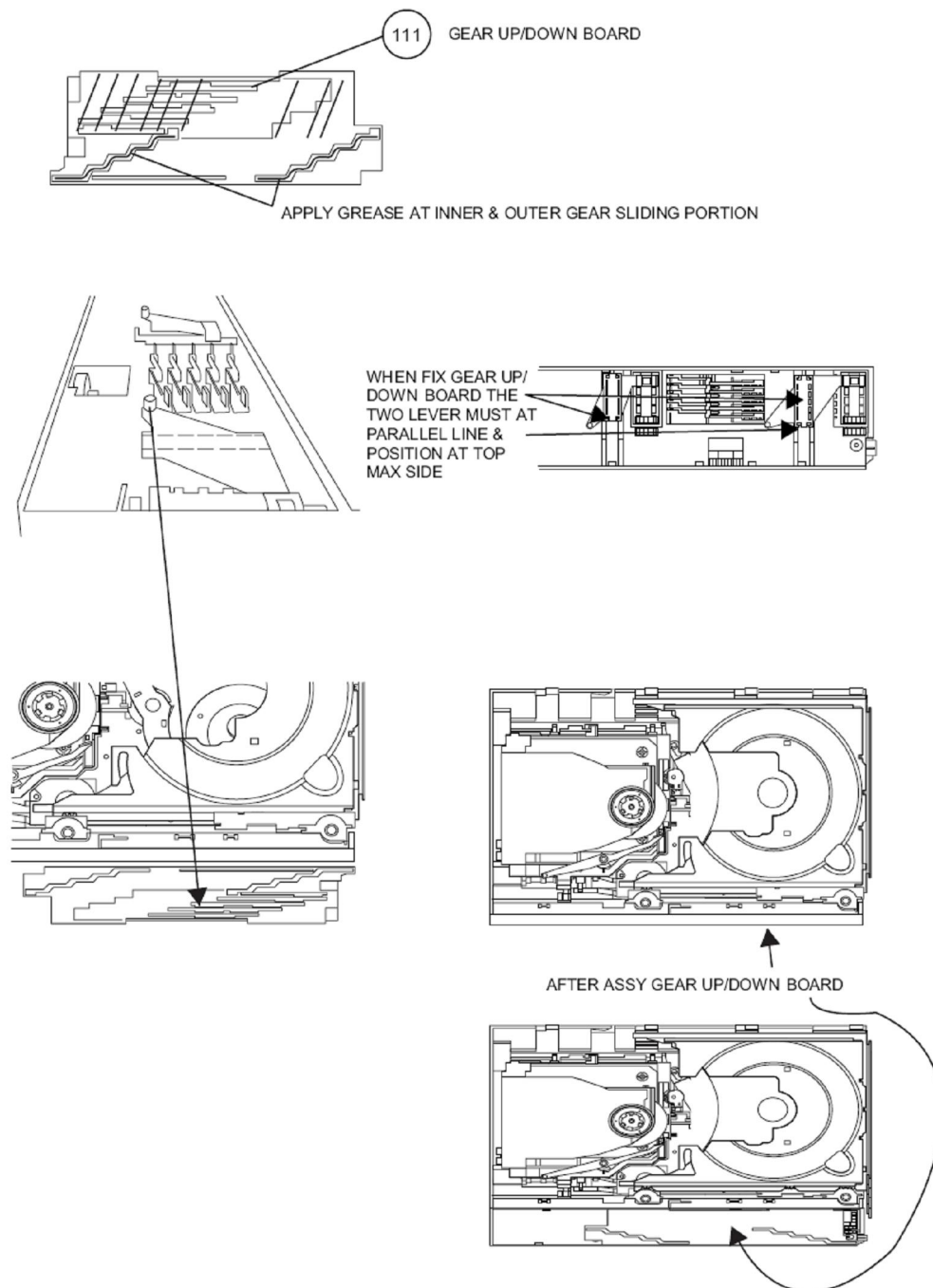




[13norte.blogspot.com](http://13norte.blogspot.com)

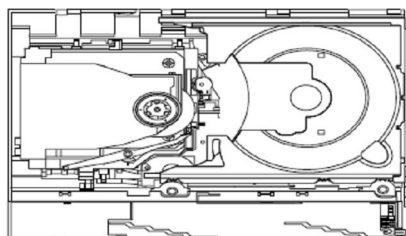




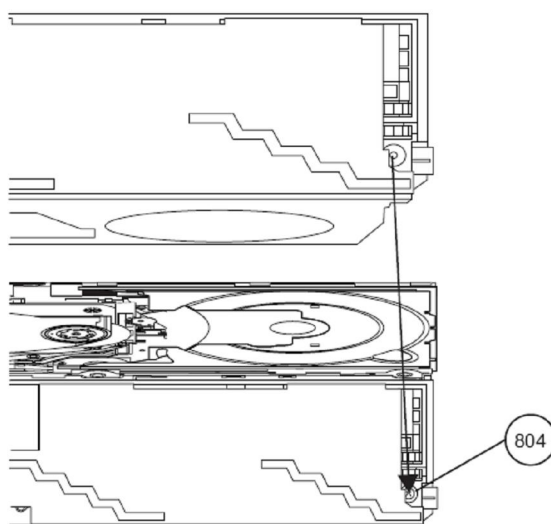


[13norte.blogspot.com](http://13norte.blogspot.com)

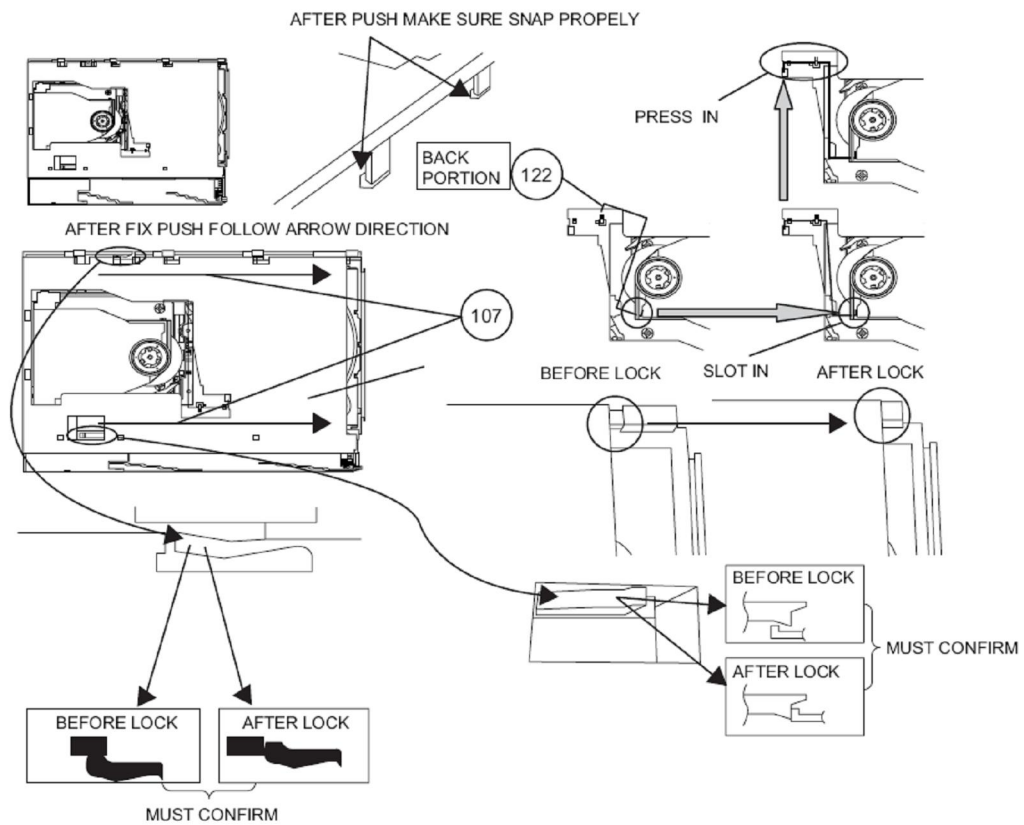
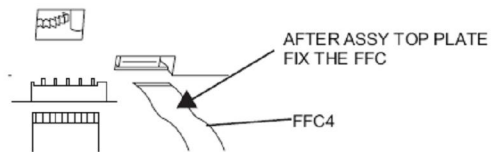




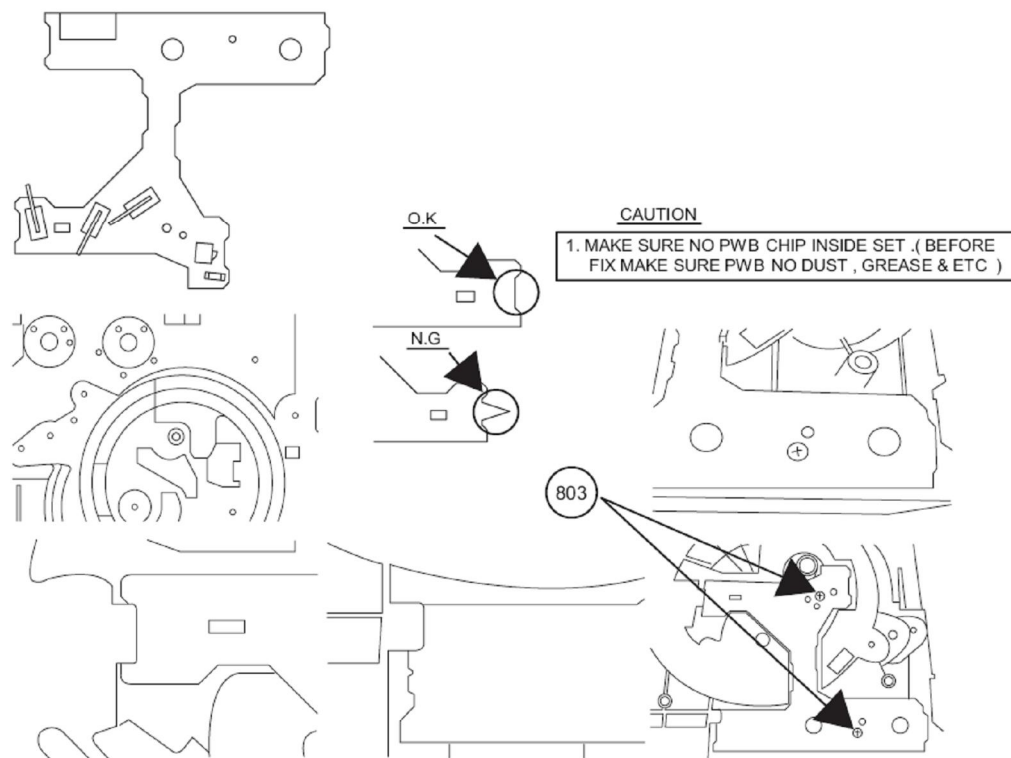
SCREW TORQUE	
3	$\begin{smallmatrix} +0.5 \\ -0 \end{smallmatrix}$ kgf-cm

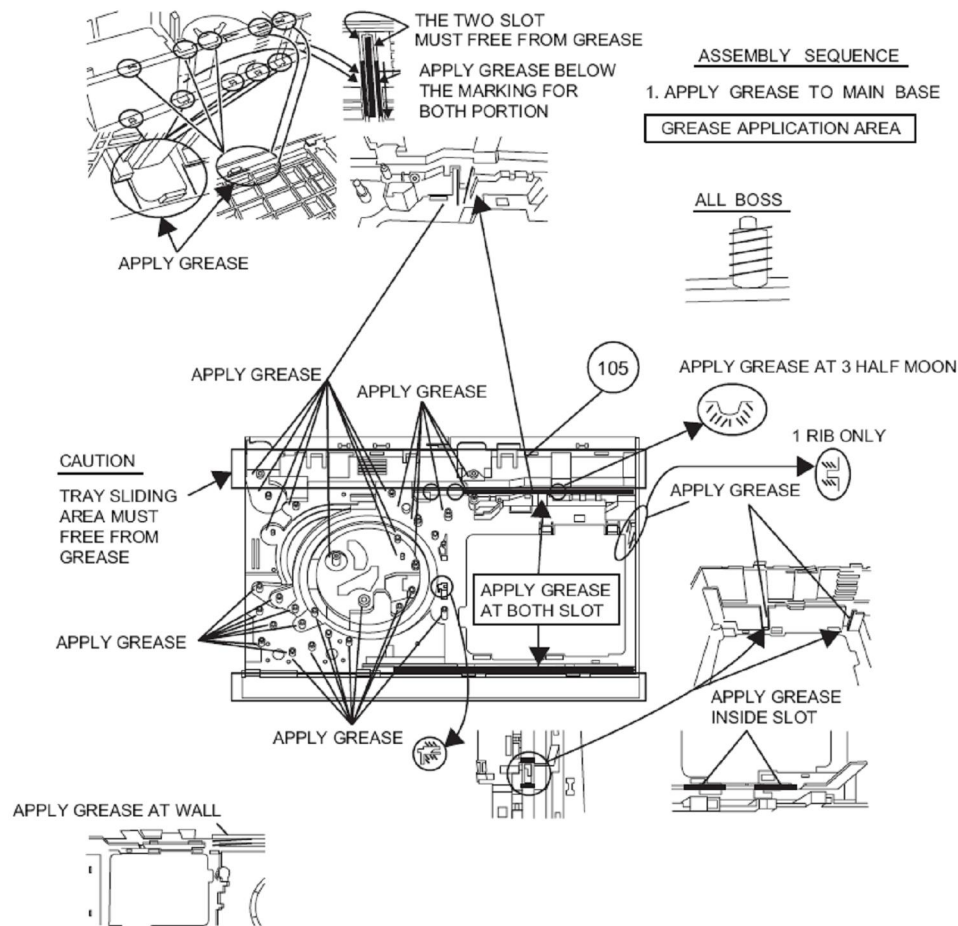


[13norte.blogspot.com](http://13norte.blogspot.com)



[13norte.blogspot.com](http://13norte.blogspot.com)





[13norte.blogspot.com](http://13norte.blogspot.com)

