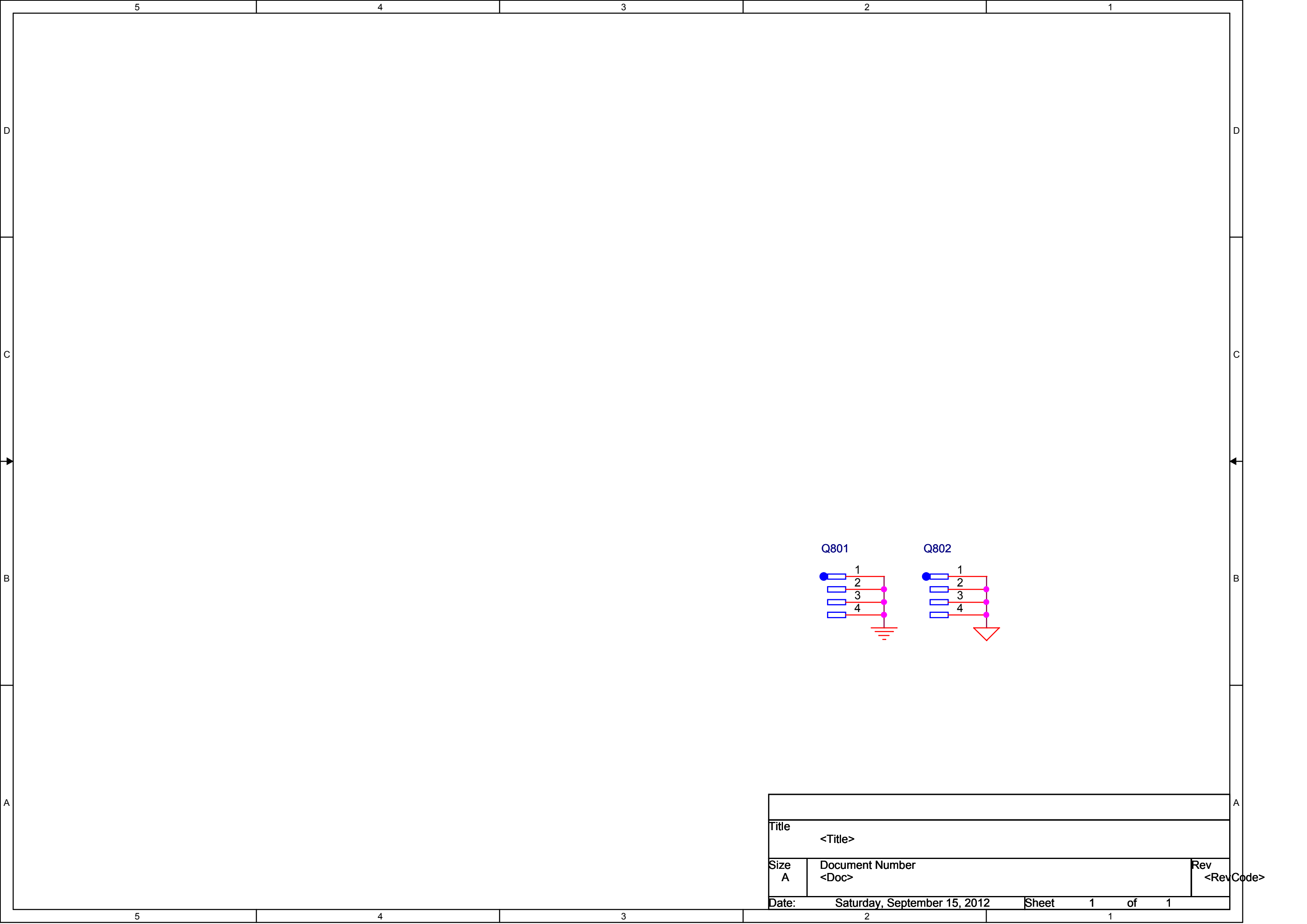


ISEN1~8 Active SEL =GND
ISEN1~6 Active SEL =VREF
ISEN1~4 Active SEL =NC

母板上插孔18个焊盘，可以控制16路LED，根据需要选用

XP806

S-RSAG7_820_4176-HX



Title			
<Title>			
Size	Document Number		Rev
A	<Doc>		<RevCode>
Date:	Saturday, September 15, 2012		Sheet 1 of 1