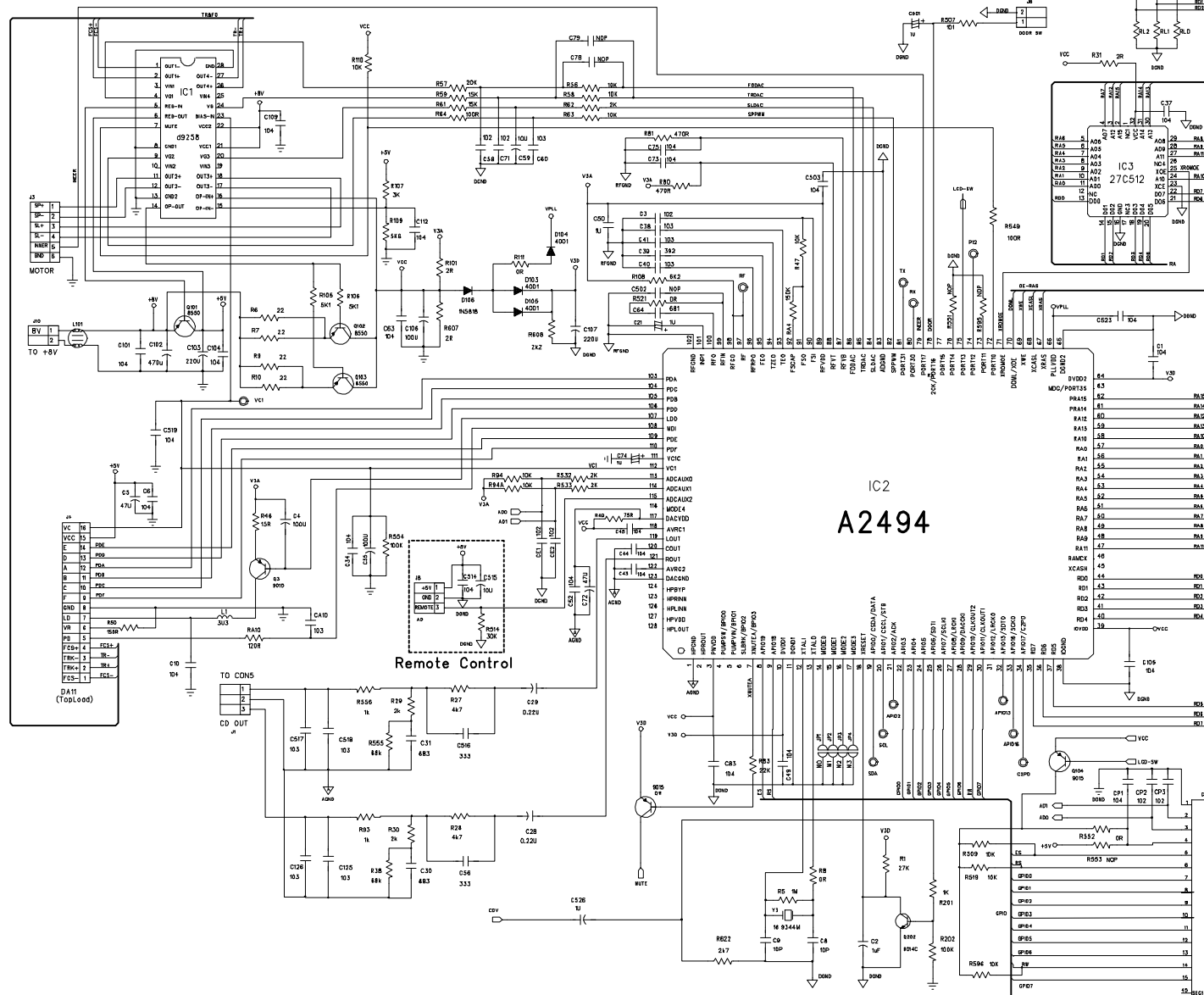


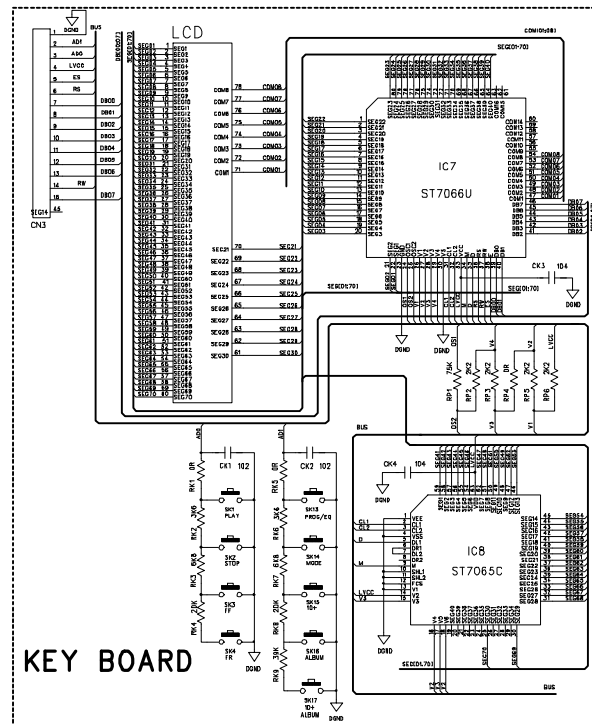
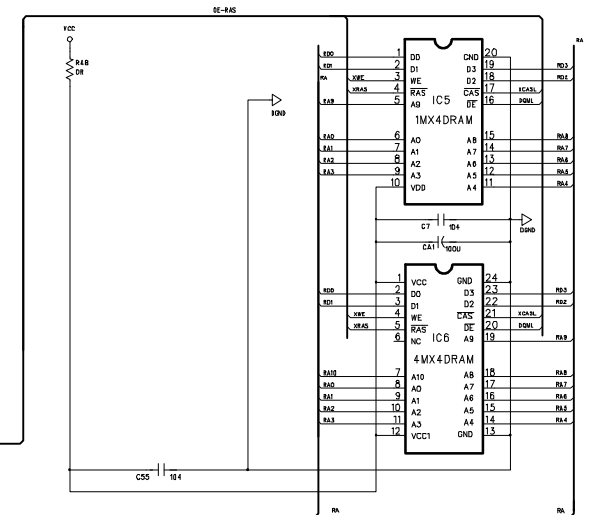
A2494-050118

A2494+KSM213+DA11+ST7066U+ST7065C

ROM CODE SELECT		MEMORY SELECT TABLE				PICKUP SELECT	
INTERNAL	OPEN	M1	M2	M3		R01	R00
EXTERNAL	SHORT	SDRAM 1+6M	OPEN	SHORT	SHORT	KSM213	0
		DRAM 4+4M	SHORT	OPEN	SHORT	DA11V	0
		DRAM 1+4M	OPEN	OPEN	OPEN		1



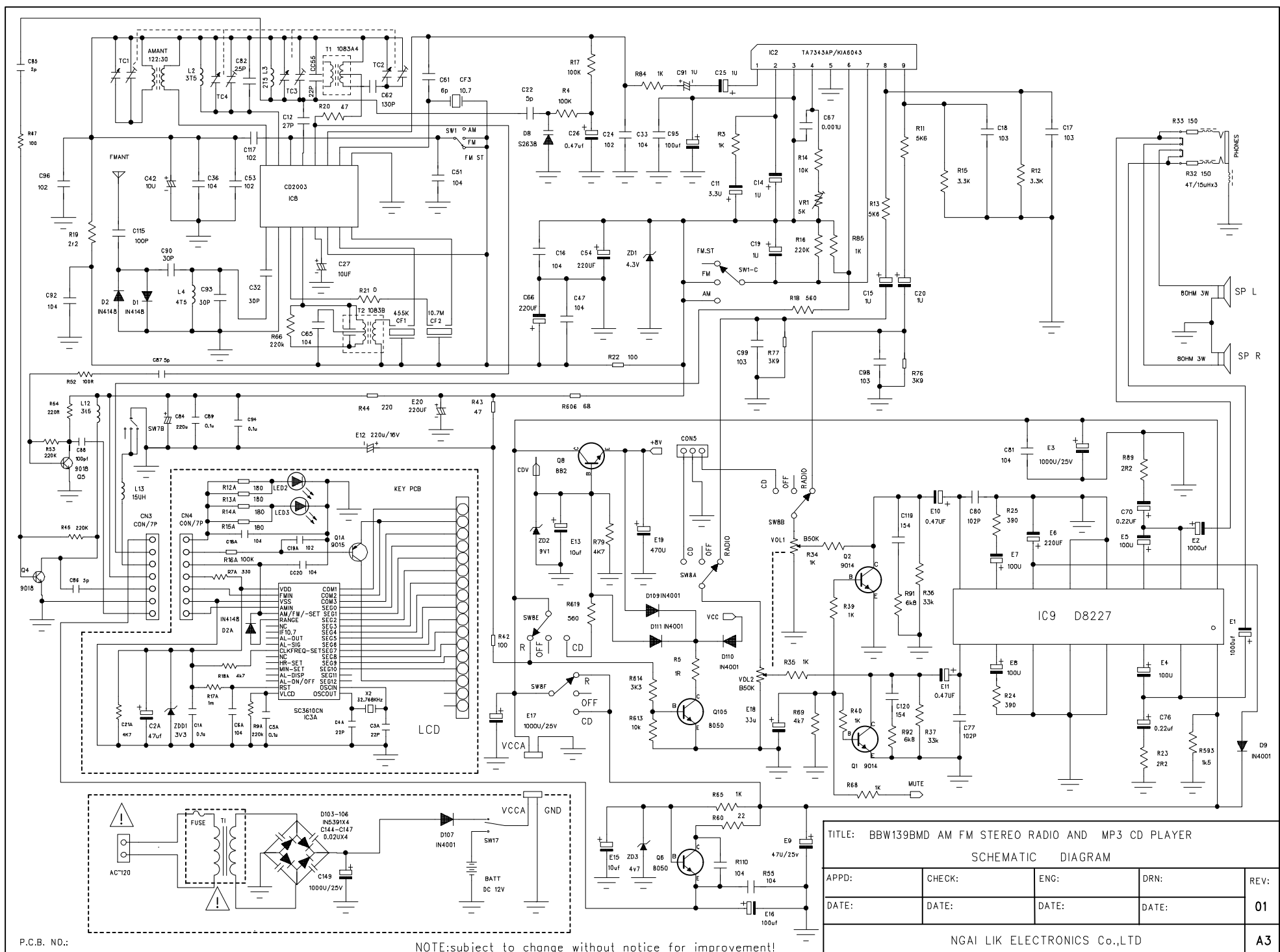
Resistor : 20K



KEY BOARD

TITLE: BBW139BMD MP3 CD PLAYER				
SCHEMATIC DIAGRAM				
APPD:	CHECK:	ENG:	DRN:	REV:
DATE:	DATE:	DATE:	DATE:	01
NGAI LIK ELECTRONICS Co.,LTD				A3

NOTE:subject to change without notice for improvement!



TITLE: BBW139BMD AM FM STEREO RADIO AND MP3 CD PLAYER

SCHEMATIC DIAGRAM

APPD:	CHECK:	ENG:	DRN:	REV:
DATE:	DATE:	DATE:	DATE:	01

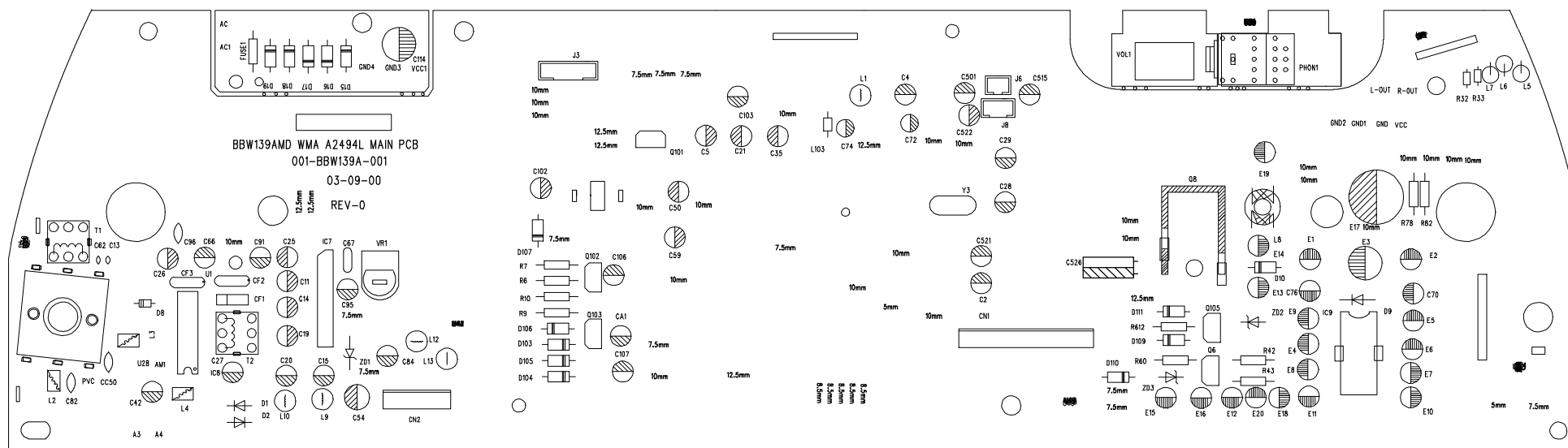
NGAI LIK ELECTRONICS Co.,LTD

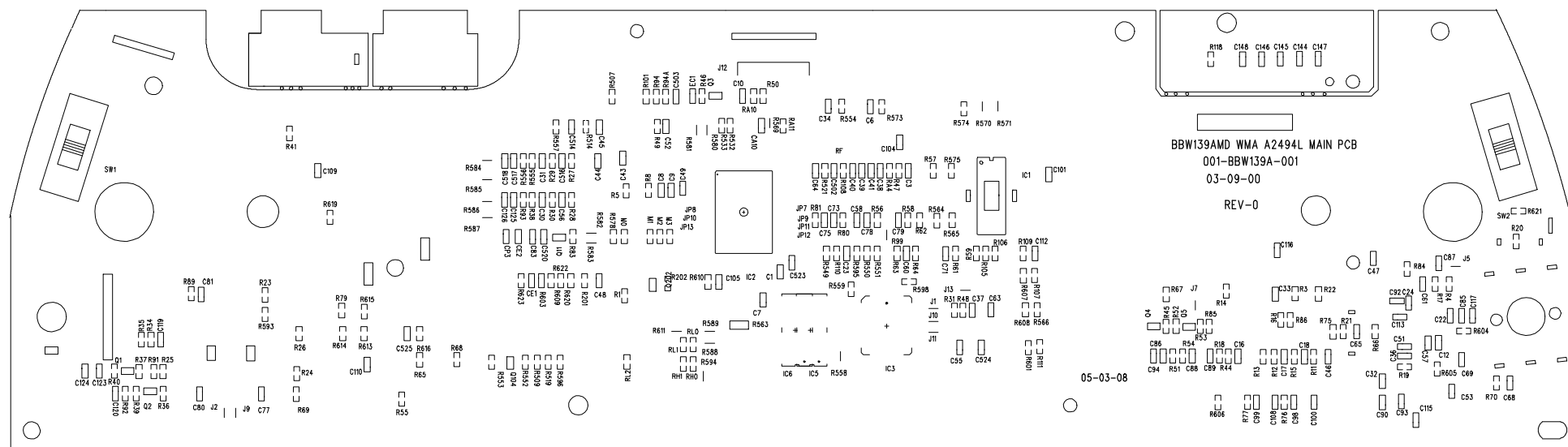
A3

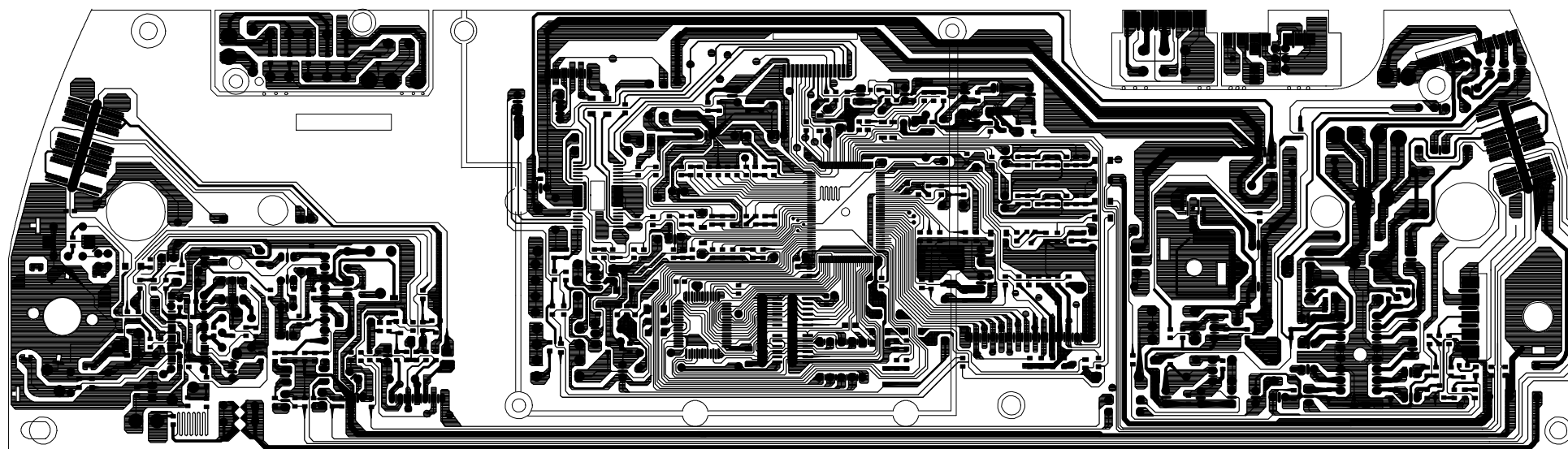
P.C.B. NO.:

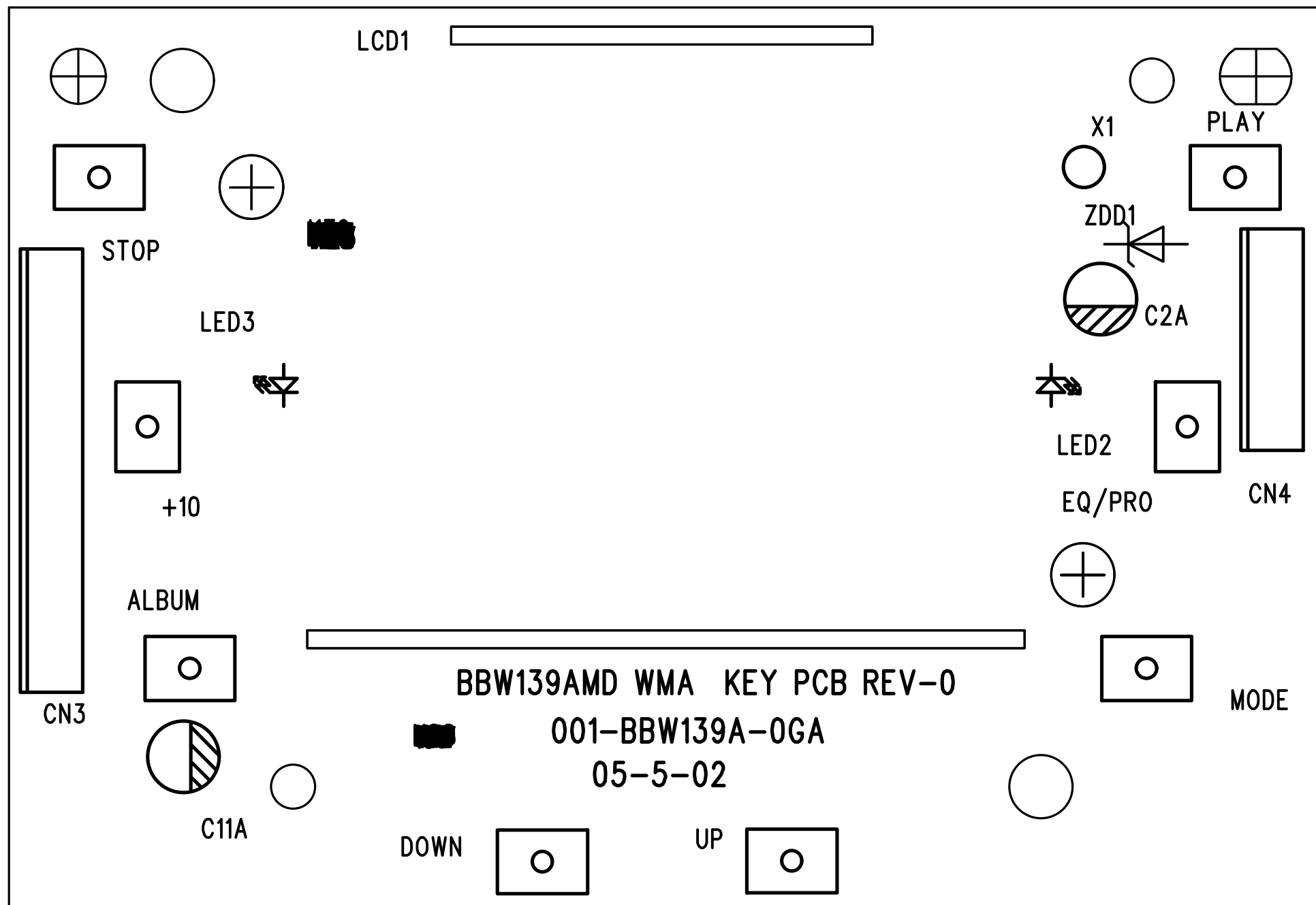
NOTE:subject to change without notice for improvement!

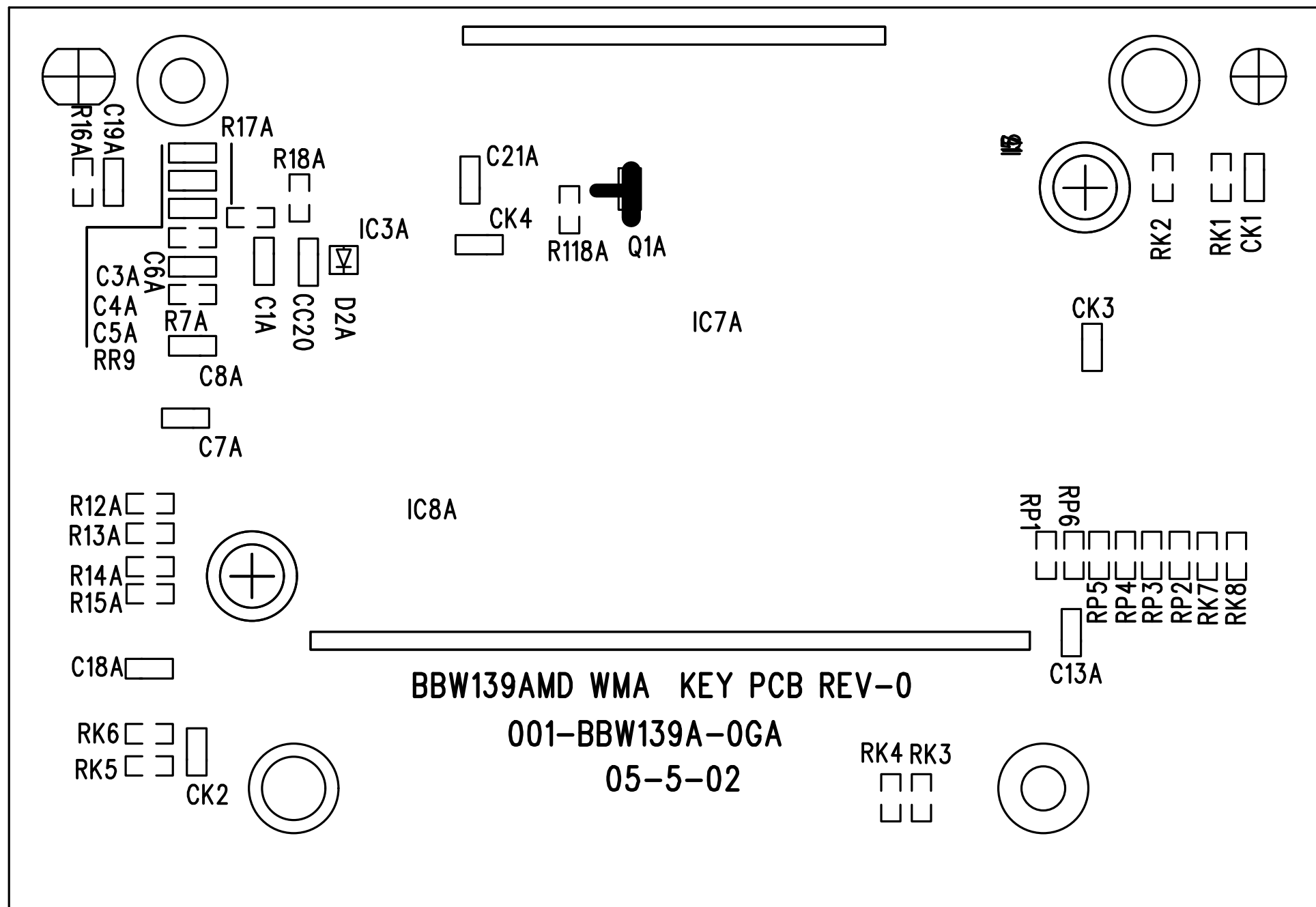
NL-DES-F09/REV.0/Aug.01.2002

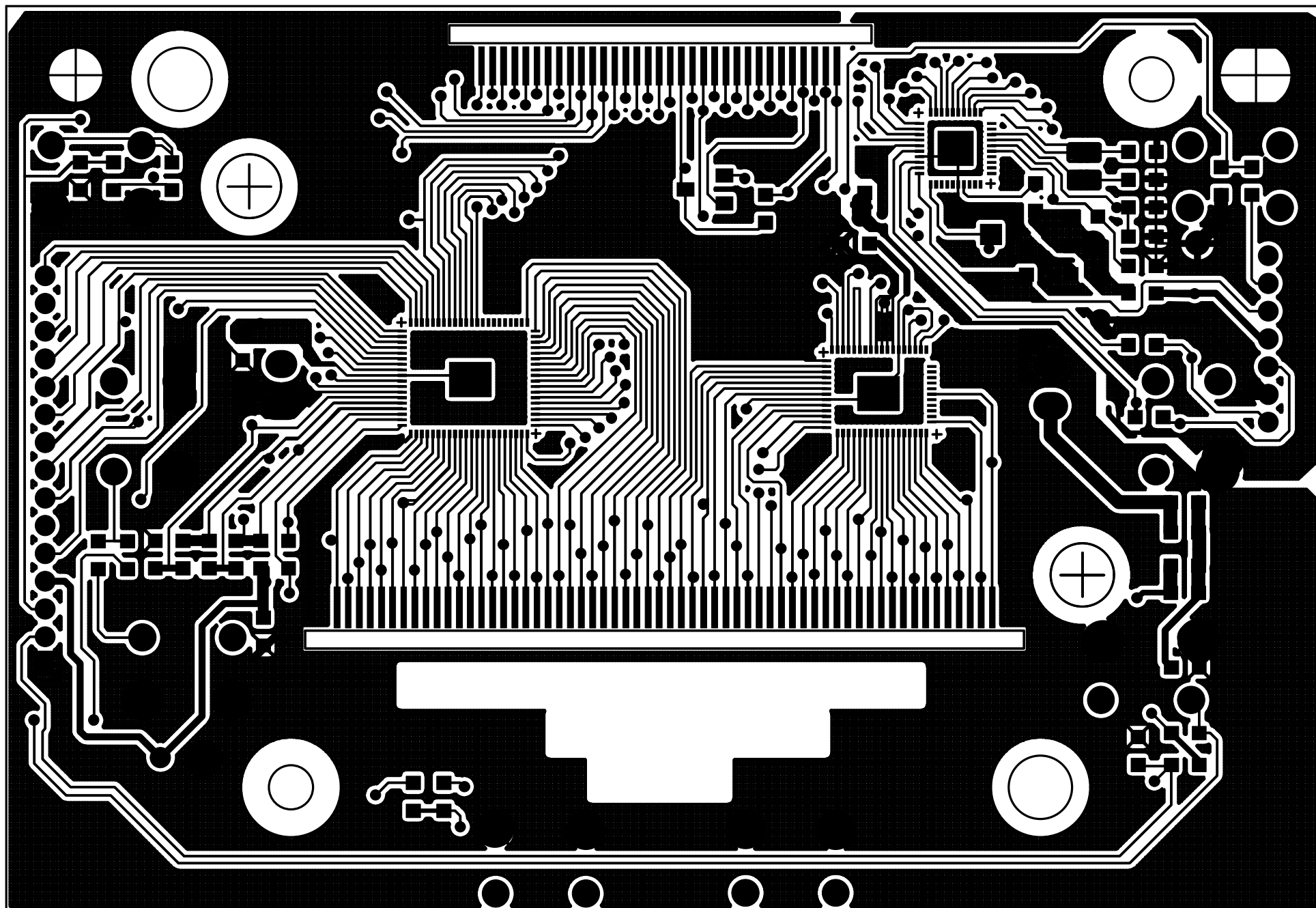


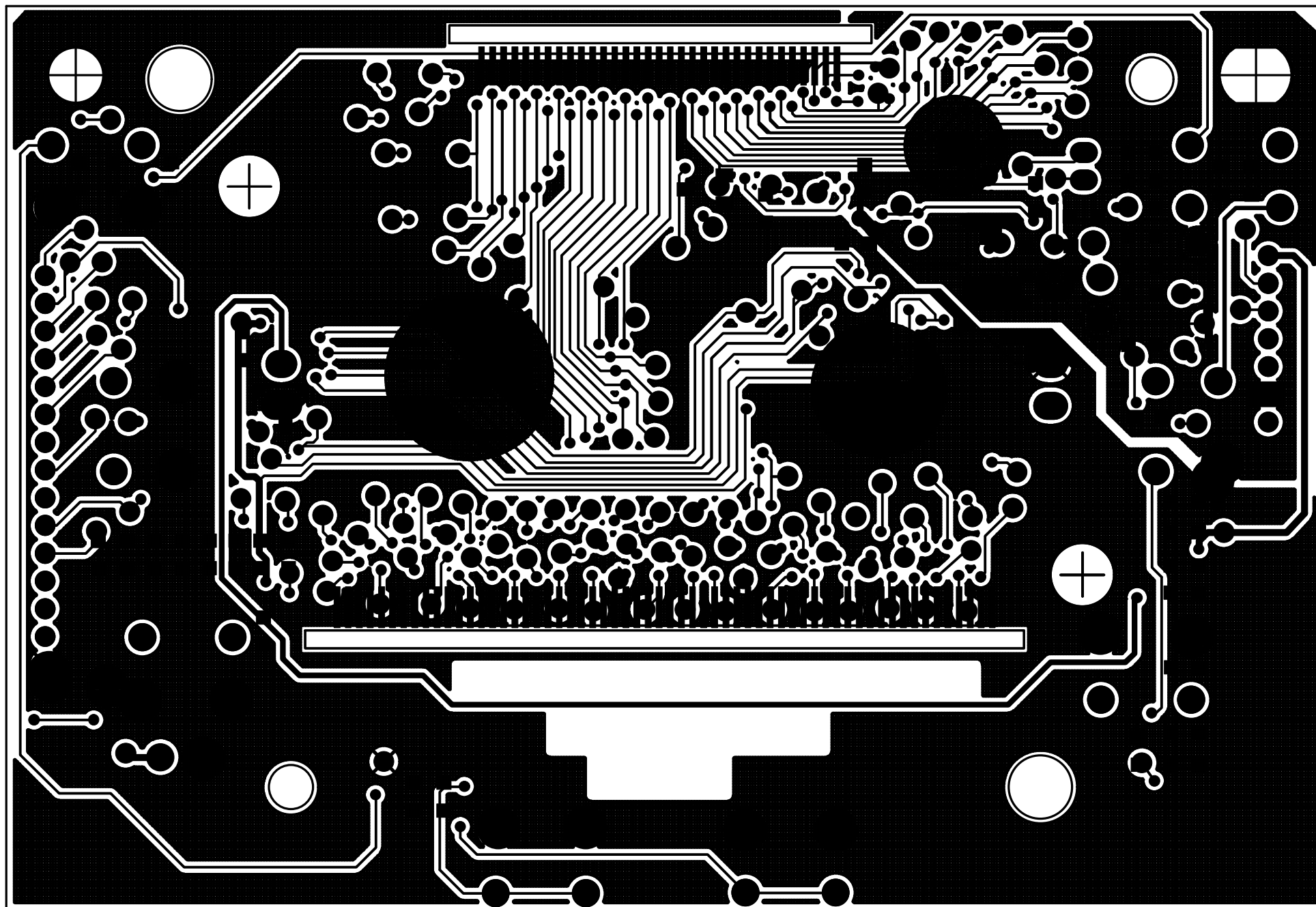






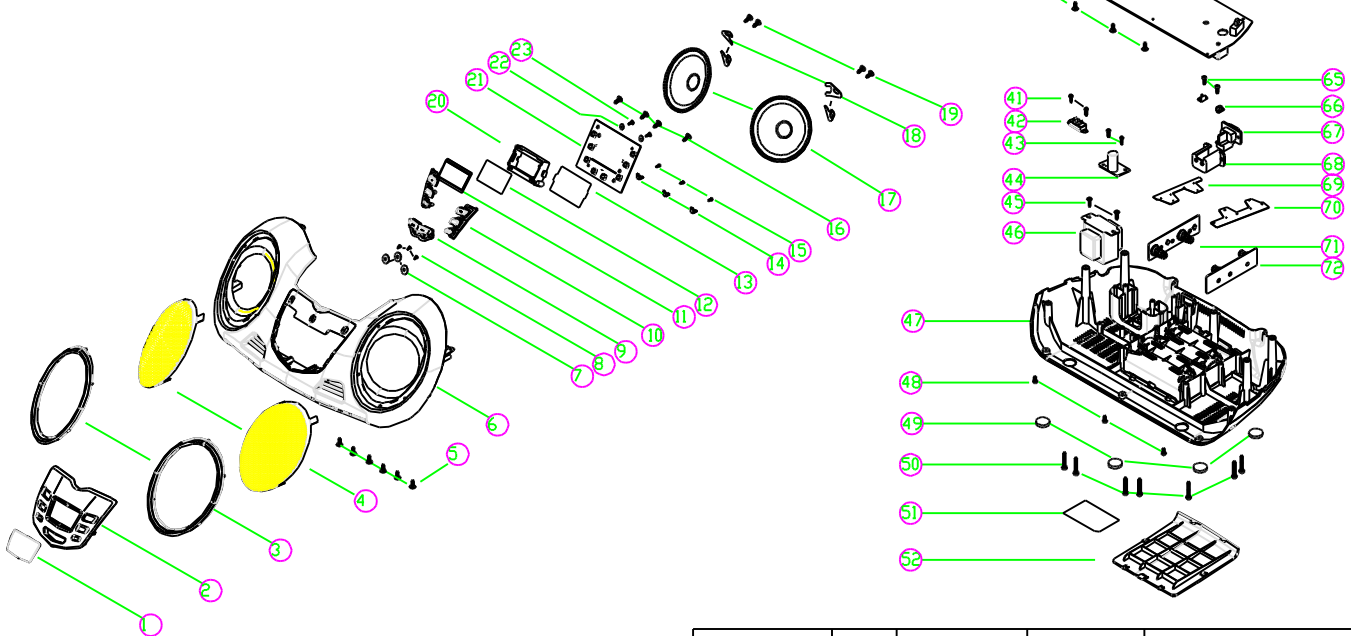
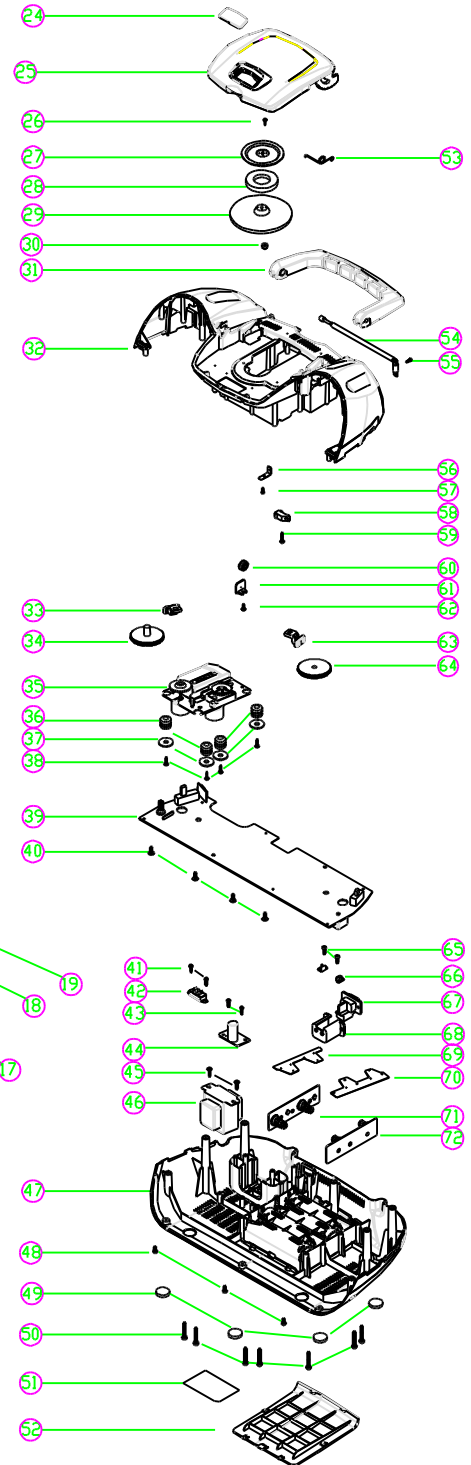






NL-DES-F11/RVE.0/AUG.01.2002

NO.	DESCRIPTION	SET	NO.	DESCRIPTION	SET
1	DISPLAY LENS	1	37	METAL WASHER(A)	4
2	PANLE	1	38	SCREW WA2X10	4
3	SPEAKER DECORATION LOOP(L/R)	2	39	MIAN PCB	1
4	SPEAKER GRILL(L/R)	2	40	SCREW WA3X10	4
5	SCREW WA3X10	6	41	SCREW WA3X8	2
6	FORNT CABINET	1	42	110/220 SWITCH	1
7	FIBER WASHER	3	43	SCREW PA3X10	2
8	SCREW WA3X8	3	44	POWER PCB	1
9	SKIP BUTTON	1組	45	SCREW WA 3X14	2
10	PLAY BUTTONS	2組	46	AC TRANSFORMER	1
11	LCD DISPLAY	1	47	BOTTOM CABINET	1
12	FILTER VELAMEN	1	48	SCREW PM3X8	3
13	LIGHT VELAMEN	1	49	RUBBER FOOT	4
14	METAL CONNECT	3	50	SCREW PA 3X14	7
15	SCREW PA 3X8	3	51	BOTTOM PVC PLATE	1
16	SCREW WA3X10	4	52	BATTERY DOOR	1
17	SPEAKER	2	53	CD DOOR SPRING	1
18	SPEAKER CLIP	4	54	ANTENNA ROD	1
19	SCREW WA3X12	4	55	SCREW PM3X6	1
20	LCD BRACKET	1	56	ANTENNA SOILDING PLATE	1
21	KEY PCB	1	57	SCREW PA3X6	1
22	FIBER WASHER	2	58	LEAF SWITCH	1
23	SCREW WA3X8	2	59	SCREW PA2X12	1
24	CD DOOR LENS	1	60	DAMPER WHEEL	1
25	CD DOOR	1	61	DAMPER WHEEL BRACKET	1
26	SCREW PA3X6	1	62	SCREW WA3X10	1
27	TOP COVER PLATE	1	63	BAND KNOB	1
28	MAGNET RING	1	64	TUNING KNOB	1
29	BOTTOM COVER PLATE	1	65	SCREW PA3X10	2
30	BRASS NUT	1	66	SCREW BRACET	1
31	HANDLE	1	67	AC SOCKET	1
32	TOP CABINET	1	68	AC SOCKET COVER	1
33	FUNCTION KNOB	1	69	BATTREY COVER PLATE (A)	1
34	VOLUME KNOB	1	70	BATTREY COVER PLATE (B)	1
35	CD DECK	1	71	BATTERY PCB*, -(A)	1
36	CD CUSHION RUBBER	4	72	BATTERY PCB*, -(B)	1



更改標記	數量	簽名	日期	更改說明
設計	繪圖	審核	主管	比例
				數量
				1:1
				1
				名稱
				型號
				BBW139BM
				共1張
				第1張
				版次
				1
				圖號
				EP01
				文件名
				BBW139BM-EP01

MILLIONWAY Indternational Industrial Ltd.
DS-0112DR/MP3(0.8W)

LN	PART NO.	QTY	DESCRIPTION	DESTINAION
1	190-011201-01	1	DS-0112MP3/DR MAIN PCB(121X160MM)	主板
2	190-0112-01-05	1	DS-0112DR LED PCB(14X27.5X1.6mm)	LED板
3	133-002822-61	1	IC CD2822	IC201
4	133-102111-16	1	IC TA2111/SA2111	IC101
5	133-094A58-00	1	IC TC94A58FAG-050	IC302
6	133-094A34-00	1	IC TC94A34FG-002	IC301
7	133-002157-00	1	IC TA2157FN	IC303
8	133-009258-00	1	IC D9258PH	IC304
9	131-510882-00	1	TRANSISTOR B882	Q201
10	131-038050-03	1	TRANSISTOR S8050	Q305
11	131-039014-03	5	TRANSISTOR S9014	Q202 203 301 302 306
12	131-039015-03	2	TRANSISTOR S9015	Q303 304
13	131-039018-03	1	TRANSISTOR S9018	Q101
14	130-410039-00	1	ZENER DIODE 3.9V 0.5W	D303
15	130-410043-00	1	ZENER DIODE 4.3V 0.5W	D301
16	130-410047-00	1	ZENER DIODE 4.7V 0.5W	D105
17	130-410082-00	1	ZENER DIODE 8.2V 0.5W	D205
18	130-134002-00	4	DIODE IN4002	D201-204
19	130-134148-00	8	DIODE IN4148	D101-104 206-209
20	733-005020-00	2	FUSE KEY	F301
21	182-161000-00	1	FUSE T1.0AL/250V	F301
22	130-030200-02	2	33B4SCC01D (3MM 蓝色超强光)	D404 405
23	137-0169344-00	1	CRYSTAL 16.9344Hz	X301
24		2	2.5" 8 OHM 2W 32磁 SPEAKER	喇叭
25	107-310700-16	1	CERAMIC FILTER 10.7MHz(三脚)	C102
26	107-300455-16	1	CERAMIC FILTER 455KHz(三脚)	C101
27	102-113284-07	1	AM IF(MT-3284) YELLOW	T101
28	102-113282-07	1	AM OSC (MT-3282) RED	T103
29	102-113283-07	1	FM IF (MT-3283) PINK	T104
30	120-110201-04	1	PVC AM 126PF FM 20PF KG2220T28	PVC101
31	103-411010-13	1	AM ANT COIL 110:20 130MM*4	AM ANT
32	183-220080-02	1	FERRITE BAR 10X80MM	FERRITE BAR (磁棒)
33	101-41V112-12	1	TRANSFORMER EI-41 SEMKO	火牛 (跟订单选用)
34		1	IRAM POWER CORD	因PO而定
36	147-110102-01	1	LEAF SWITCH LF323	CD头用
37	141-043100-12	2	SK43D03G10 (4P3T)	SW101 201
38		1	CD DECK SANYO	CD机芯
39		1	16P软排线 L=80MM	C101头用
40	104-025045-08	1	FM COIL 4.5X2.5TX0.8MM	L103
41	104-045045-08	1	FM COIL 4.5X4.5TX0.8MM	L101
42	104-035050-08	1	FM COIL 4.5X3.5TX0.8MM	L102
43		1	CHOKE COIL 10UH (4X6MM)	L301
44		1	CHOKE COIL 10UH1/4W(色环电感)	L302
45	113-339105-12	1	CAR. RESISTOR 3.3 OHM 1/2W +/-5%	R220
46	113-229105-12	1	CAR. RESISTOR 2.2 OHM 1/4W +/-5%	R212
47	113-750105-12	1	CAR. RESISTOR 75 OHM 1/4W +/-5%	R211
48	113-229105-12	1	CAR. RESISTOR 2.2 OHM 1/8W +/-5%	R356
49	113-479105-12	2	CAR. RESISTOR 4.7 OHM 1/8W +/-5%	R201 202
50	113-100105-12	6	CAR. RESISTOR 10 OHM 1/8W +/-5%	R101 102 112 311 312 348
51	113-470105-12	1	CAR. RESISTOR 47 OHM 1/8W +/-5%	R110
52	113-101105-12	1	CAR. RESISTOR 100 OHM 1/8W +/-5%	R347
53	113-159105-12	1	CAR. RESISTOR 150 OHM 1/4W +/-5%	R116
54	113-181105-12	2	CAR. RESISTOR 180 OHM 1/4W +/-5%	R415.R416
55	113-221105-12	5	CAR. RESISTOR 220 OHM 1/8W +/-5%	R337 354 353 358 366
56	113-331105-12	2	CAR. RESISTOR 330 OHM 1/8W +/-5%	R105 398
57	113-479105-12	1	CAR. RESISTOR 470 OHM 1/4W +/-5%	R357
58	113-561105-12	1	CAR RESISTOR 560 OHM 1/8W +/-5%	R314
59	113-681105-12	1	CAR. RESISTOR 680 OHM 1/8W +/-5%	R399
60	113-102105-12	5	CAR. RESISTOR 1K 1/8W +/-5%	R207 208 217 336 350
61	113-222105-12	3	CAR. RESISTOR 2.2K 1/8W +/-5%	R310 328 334
62	113-332105-12	4	CAR. RESISTOR 3.3K 1/8W +/-5%	R103 119 120 359
63	113-472105-12	4	CAR. RESISTOR 4.7K 1/8W +/-5%	R108 109 307 308
64	113-562105-12	3	CAR. RESISTOR 5.6K 1/8W +/-5%	R106 1067 319
65	113-682105-12	5	CAR. RESISTOR 6.8K 1/8W +/-5%	R203 204 209 210 316
66	113-752105-12	1	CAR. RESISTOR 7.5K 1/8W +/-5%	R351
67	113-103105-12	12	CAR. RESISTOR 10K 1/8W +/-5%	R218 219 301 302 309 313 324 327 331 332 R335 363

MILLIONWAY International Industrial Ltd.
DS-0112DR/MP3(0.8W)

LN	PART NO.	QTY	DESCRIPTION	DESTINAION
68	113-123105-12	2	CAR. RESISTOR 12K 1/8W +/-5%	R305 306
69	113-153105-12	1	CAR. RESISTOR 15K 1/8W +/-5%	R323
70	113-223105-12	4	CAR. RESISTOR 22K 1/8W +/-5%	R205 329 333 355
71	113-333105-12	1	CAR. RESISTOR 33K 1/8W +/-5%	R338
72	113-473105-12	4	CAR. RESISTOR 47K 1/8W +/-5%	R303 304 321 326
73	113-563105-12	1	CAR. RESISTOR 56K 1/8W +/-5%	R360
74	113-683105-12	5	CAR. RESISTOR 68K 1/8W +/-5%	R341-343 345 349
75	113-104105-12	2	CAR. RESISTOR 100K 1/8W +/-5%	R111 330
76	113-154105-12	2	CAR. RESISTOR 150K 1/8W +/-5%	R344 346
77	113-184105-12	1	CAR. RESISTOR 180K 1/8W +/-5%	R131
78	113-474105-12	1	CAR. RESISTOR 470K 1/8W +/-5%	R320
79	113-225105-12	2	CAR. RESISTOR 2.2M 1/8W +/-5%	R322 365
80	123-209340-13	1	C. CAP 2P +/-10%	C130
81	123-309340-13	1	C. CAP 3P +/-10%	C330
82	123-509340-13	1	C. CAP 5P +/-10%	c106
83	123-150340-13	2	C. CAP 15P +/-10%	C313 314
84	123-180340-13	1	C. CAP 18P +/-10%	C112
85	123-200340-13	2	C. CAP 20P +/-10%	C104 105
86	123-220340-13	1	C. CAP 22P +/-10%	C102
87	123-300340-13	1	C. CAP 30P +/-10%	C101
88	123-470340-13	1	C. CAP 47P +/-10%	C322
89	123-820340-13	1	C. CAP 82P +/-10%	C331
90	123-101340-13	3	C. CAP 100P +/-10%	C103 317 329
91	123-141340-13	1	C. CAP 140P +/-10%	C127
92	123-331340-13	1	C. CAP 330P +/-10%	C107
93	123-471340-13	2	C.CAP 470P +/-10%	C346 347
94	123-681340-13	2	C.CAP 680P +/-10%	C209 210
95	123-102370-16	2	C. CAP 0.001UF(102P) +80/-20%	C304 305
96	123-222370-16	3	C. CAP 0.0022UF(222P) +80/-20%	C120 121 372
97	123-472370-16	1	C. CAP 0.0047UF(472P) +80/-20%	C345
98	123-103370-16	1	C. CAP 0.01UF(103P) +80/-20%	C308
99	123-203370-16	8	C. CAP 0.02UF(203P) +80/-20%	C115 117 211-214 218 131
100	123-333370-16	2	C. CAP 0.033UF(333P) +80/-20%	C327 328
101	123-473370-16	5	C. CAP 0.047UF(473P) +80/-20%	C334 348-350 353
102	123-104370-16	28	C. CAP 0.1UF(104P) +80/-20%	C122 123 301 342 344 359 362-364 368 371 C109 110 129 201 202 306 309 315 318 320 C333 335 340 341 352 357 132
103	126-272370-16	1	MYLAR CAP 2700PF/50V (272M) +/-10%	C325
104	126-103370-16	4	MYLAR CAP 0.01UF/50V (103M) +/-10%	C118 119 324 326
105	126-153370-16	1	MYLAR CAP 0.015UF/50V (153M) +/-10%	C323
106	127-474078-01	1	ELE. CAP 0.47UF/50V +/-20%	C114
107	127-105078-01	3	ELE. CAP 1UF/50V +/-20%	C111 385 311
108	127-225078-01	2	ELE. CAP 2.2UF/50V +/-20%	C221 222
109	127-335078-01	2	ELE. CAP 3.3UF/50V +/-20%	C302 303
110	127-475078-01	2	ELE. CAP 4.7UF/50V +/-20%	C108 113
111	127-226038-01	1	ELE. CAP 22UF/10V +/-20%	C307
112	127-336038-01	2	ELE. CAP 33UF/10V +/-20%	C225 226
113	127-476038-01	12	ELE. CAP 47UF/10V +/-20%	C215 219 310 316 319 321 332 338 339 384 386 C356
114	127-107038-01	6	ELE. CAP 100UF/10V +/-20%	C116 207 208 343 351 358
115	127-227048-01	1	ELE. CAP 220UF/16V +/-20%	C354
116	127-477048-01	3	ELE. CAP 470UF/16V +/-20%	C 220 205 206
117	127-108048-01	1	ELE. CAP 1000UF/16V +/-20%	C217
118	127-228048-01	1	ELE. CAP 2200UF/16V +/-20%	C216
119	160-102250-01	2	PIN SOCKET 2PIN 2.0MM	CN301.CN101
120	160-102255-01	1	PIN SOCKET 2PIN 2.5MM	CN201
121	160-104205-01	1	PIN SOCKET 4PIN 2.0MM	CN304
122	160-104255-01	2	PIN SOCKET 4PIN 2.5MM	cN102 203
123	160-106205-01	1	PIN SOCKET 6PIN 2.0MM	cN305
124	160-112205-01	1	PIN SOCKET 12PIN 2.0MM	cN303

MILLIONWAY Indternational Industrial Ltd.
DS-0112DR/MP3(0.8W)

LN	PART NO.	QTY	DESCRIPTION	DESTINAION
125	160-216106-02	1	Connector-FFC R/A type 16PIN 1.0mm	CN306
126	188-000003-00	75	BARE WIRE L:40MM Ø0.6MM	
127	188-000003-00	1	BARE WIRE L:40MM Ø0.6MM	J54
128		4	扎线	
129		2	鸡眼	AC1.AC2
显示板部分				
1	190-011201-02	1	DS-0112DR DISPLAY PCB(85X48.5X1.6MM)	显示板
2	190-011201-03	1	DS-0112DR VOL PCB(40X24X1.6mm)	VOL板
3	133-03610-00	1	IC CS3610D	IC401
4	137-032768-00	1	CRYSTAL 32.768KHz	X401
5		1	VOLUME A50K F-1216G-FD1-A50K	vOL201
6	135-007186-00	1	LCD DISPLAY SH-7186MP	LCD
7	131-448050-03	1	TRANSISTOR S8050	Q402
8	131-039014-03	2	TRANSISTOR S9014	Q403 404
9	131-039015-03	1	TRANSISTOR S9015	Q405
10	131-039018-03	1	TRANSISTOR S9018	Q401
11	130-520523-00	1	LED EL204 HD RED 3MM	D402
12	130-410068-00	1	ZENER DIODE 6.8V 0.5W	D401
13	113-229105-12	1	CAR. RESISTOR 2.2 OHM 1/4W +/-5%	R420
14	113-221105-12	1	CAR RESISTOR 220 OHM 1/4W +/-5%	R421
15	113-471105-12	1	CAR RESISTOR 470 OHM 1/8W +/-5%	R419
16	113-561105-12	1	CAR RESISTOR 560 OHM 1/8W +/-5%	R403
17	113-102105-12	1	CAR. RESISTOR 1K 1/8W +/-5%	R403
18	113-222105-12	1	CAR. RESISTOR 2.2K 1/8W +/-5%	R 422
19	113-472105-12	1	CAR. RESISTOR 4.7K 1/8W +/-5%	R418
20	113-103105-12	6	CAR RESISTOR 10K 1/8W +/-5%	R405 407-409 411 423
21	113-223105-12	1	CAR RESISTOR 22K 1/8W +/-5%	R406
22	113-333105-12	1	CAR RESISTOR 33K 1/8W +/-5%	R413
23	113-473105-12	1	CAR RESISTOR 47K 1/8W +/-5%	R414
24	113-334105-12	1	CAR RESISTOR 330K 1/8W +/-5%	R402
25	113-105105-12	1	CAR RESISTOR 1M 1/8W +/-5%	R410
26	123-200340-13	2	C. CAP 20P +/-10%	C404 405
27	123-101340-13	2	C.CAP 100P +/-10%	C401 402
28	123-102370-16	1	C. CAP 0.001UF(102P) +80/-20%	C403
29	123-203370-16	1	C. CAP 0.02UF(203P) +80/-20%	C409
30	123-104370-16	1	C. CAP 0.1UF(104P) +80/-20%	C406
31	127-476038-01	1	ELE. CAP 47UF/10V +/-20%	C410
32	127-107038-01	1	ELE. CAP 100UF/10V +/-20%	C408
33	127-227038-01	1	ELE. CAP 220UF/10V +/-20%	C411
34	188-000003-00	10	BARE WIRE L:40MM Ø0.6MM	
KEY板部分				
1	190-011201-04		DS-0112MP3 KEY PCB(130X31.5X1.6mm)	按键板
2	147-110385-00	7	TACT SWITCH 2WB3.85	SW301-307
3	113-152105-12	1	CAR. RESISTOR 1.5K 1/8W +/-5%	R364
4	113-222105-12	1	CAR. RESISTOR 2.2K 1/8W +/-5%	R361
5	113-272105-12	1	CAR. RESISTOR 2.7K 1/8W +/-5%	R368
6	113-392105-12	1	CAR. RESISTOR 3.9K 1/8W +/-5%	R369
7	113-682105-12	1	CAR. RESISTOR 6.8K 1/8W +/-5%	R370
8	113-103105-12	1	CAR. RESISTOR 10K 1/8W +/-5%	R361
9	113-153105-12	1	CAR. RESISTOR 15K 1/8W +/-5%	R371
10	113-433105-12	1	CAR. RESISTOR 43K 1/8W +/-5%	R372
11	123-101340-13	1	C.CAP 100P +/-10%	C360

LN	RP	PART NO.	QTY	DESCRIPTION
LN		PART NO.	QTY	DESCRIPTION
★		190-022801-00	1	M228A MAIN PCB
1		101-481281-35F	1	TRANSFORMER EI-48 SEMKO
2		130-134148-00	1	DIODE IN4148
3		130-314002-00	4	DIODE IN4002
4		130-410056-00	1	IENERD 10DE 5.6V 0.5W
5		130-410082-00	1	IENERD 10DE 8.2V 0.5W
6		130-410091-00	1	IENERD 10DE 9.1V 0.5W
7		131-030882-00	1	TRANSISTOR D882
8		131-038050-03	1	TRANSISTOR 2SC8050C
9		133-102111-16	1	IC TA2111FN (贴片)
10		133-202206-16	1	IC TEA2206
11		141-043400-11	2	SLIDE SWITCH SK-43DO3M10
12		185-022801-00	1	WP4-5
13		102-114726-07	1	AM1FT(MT-726) YELLOW
14		102-114732-07	1	FM1FT(MT-732) PINK
15		102-817310-07	1	AMOSC(W-7310) RED
16		103-411020-13	1	AM ANT COIL110:10
17		104-025050-08	1	FM OSC COIL 5.0X2.5TX0.8MM
18		104-035050-08	1	FM COIL 5.0X3.5TX0.8MM
19		104-045050-08	1	FM COIL 5.0X4.5TX0.8MM
20		107-310700-16	1	CERAMIC FILTER 10.7MH2(带红点三脚)
21		107-300455-16	1	CERAMIC FILTER 455KH2
22		120-110401-04	1	PVC AM126PF FM20PF KG2220T28
23		183-220080-02	1	FERRITE BAR 10X80MM
24		113-022232-12	2	CAR. RESISTOR 2.2 OHM 1/16W
25		113-100105-12	3	CAR. RESISTOR 10 OHM 1/16W
26		113-390105-12	2	CAR. RESISTOR 39 OHM 1/16W
27		113-101105-12	2	CAR. RESISTOR 100 OHM 1/16W
28		113-221105-12	1	CAR.RESISTOR 220 OHM 1/16W
29		113-471105-12	1	CAR.RESISTOR 470 OHM 1/16W
30		113-681105-12	1	CAR.RESISTOR 680 OHM 1/16W
31		113-102105-12	6	CAR.RESISTOR 1K 1/16W
32		113-152105-12	1	CAR.RESISTOR 1.5K 1/16W
33		113-222105-12	2	CAR.RESISTOR 2.2K 1/16W
34		113-332105-12	3	CAR.RESISTOR 3.3K 1/16W
35		113-472105-12	1	CAR.RESISTOR 4.7K 1/16W
36		113-562105-12	3	CAR.RESISTOR 5.6K 1/16W
37		113-682105-12	2	CAR.RESISTOR 6.8K 1/16W
38		113-103105-12	4	CAR.RESISTOR 10K 1/16W
39		113-223105-12	2	CAR.RESISTOR 22K 1/16W
40		113-473105-12	2	CAR.RESISTOR 47K 1/16W
41		113-104105-12	1	CAR.RESISTOR 100K 1/16W
42		113-124105-12	1	CAR.RESISTOR 120K 1/16W
43		113-105105-12	1	CAR.RESISTOR 1M 1/16W
44		123-509340-13	1	C.CAP 5P
45		123-100340-13	1	C.CAP 10P
46		123-200340-13	1	C.CAP 20P
47		123-220340-13	2	C.CAP 22P
48		123-300340-13	3	C.CAP 30P

49	123-121340-13	1	C.CAP 120P
50	123-331340-13	2	C.CAP 330P
51	123-102340-13	2	C.CAP 0.001UF(102)
52	123-103340-13	1	C.CAP 0.01UF(103)
53	123-203340-13	7	C.CAP 0.02UF(203)
54	123-104340-13	2	C.CAP 0.1UF(104)
55	126-152370-16	2	MYLAR CAP 0.0015UF (152)
56	126-153370-16	2	MYLAR CAP 0.015UF (153)
57	126-104370-16	2	MYLAR CAP 0.1UF (104)
58	127-224048-01	3	ELE.CAP 0.22UF/50V
59	127-474048-01	2	ELE.CAP 0.47UF/50V
60	127-105048-01	6	ELE.CAP 1UF/50V
61	127-475038-01	1	ELE.CAP 4.7UF/16V
62	127-476038-01	2	ELE.CAP 47UF/16V
63	127-107038-01	5	ELE.CAP 100UF/16V
64	127-227038-01	4	ELE.CAP 220UF/16V
65	127-477038-01	1	ELE.CAP 470UF/16V
66	127-477038-01	1	ELE.CAP 470UF/25V
67	127-108038-01	2	ELE.CAP 1000UF/16V
68	127-228058-01	1	ELE.CAP 2200UF/25V
69	125-410204-10	1	CHOKE COIL 10UH
70	718-020040-00	1	BRASS EYELET DIS 2X4.
71	733-005020-00	2	FUSE HOLDER
72	182-222000-00	1	FUSE 250V T2AL (5X20MM)
73	160-102255-01	1	PIN SOCKET 2 PIN 2.5MM
74	160-105255-01	1	PIN SOCKET 5 PIN 2.5MM
75	160-190205-01	1	PIN SOCKET 9 PIN 2.0MM
76	160-111205-01	1	PIN SOCKET 11 PIN 2.0MM
77	188-000003-00	25	BARE WIRE L:40MM Ø0.6MM
按键板 显示板部分(KEY+DISP PCB)			
	190-022802-00	1	M228A KEY BOARD & DISP PCB
★	147-110143-00	6	TACT SWITCH H:4.3MM/4 TERMINAL
1		1	VOLUME F-122KGP A50K(
2	135-502252-00	1	0.5" LED DISPLAY L4M-502252(M228专用
3	130-520523-00	2	LED EL204 HD RED 3MM
4	136-326043-01	1	OPTIC R/C REC MODULE PIC-26043 TM2
7	113-103105-12	2	CAR.RESISTOR 1K 1/16W
8	113-222105-12	2	CAR.RESISTOR 2.2K 1/16W
9	113-472105-12	1	CAR.RESISTOR 4.7K 1/16W
10	113-562105-12	2	CAR.RESISTOR 5.6K 1/16W
11	113-103105-12	2	CAR.RESISTOR 10K 1/16W
12	113-183105-12	2	CAR.RESISTOR 18K 1/16W
13	113-223105-12	1	CAR.RESISTOR 22K 1/16W
14	113-473105-12	1	CAR.RESISTOR 47K 1/16W
15	123-103370-16	2	C.CAP 0.01UF
16	127-107038-01	1	ELE.CAP 100UF/10V
17	188-000003-00	12	BARE WIRE L:40MM Ø0.6MM
JACK PCB M228 ASS'Y			
★	190-022803-00	1	JACK PCB 228APJ1
1	161-103515-20	1	3.5JACK 5 PIN TC-38-020-05W/SW
2	113-151105-12	2	CAR.RESISTOR 150 OHM 1/4W
线材部分			
1		1	UL2468#26AWG 130MM 11P1H2.0MM
2		1	UL2468#26AWG 150MM 6P1H2.0MM

3	1	UL2468#26AWG 120MM 6P2H2.0MM
4	1	UL2468#26AWG 180MM 2P1H2.0MM
5	1	UL2468#26AWG 250MM 5P1H2.0MM
6	1	UL2468#26AWG 65MM 11P1H2.0MM
7	1	UL2468#26AWG 230MM 5P1H2.5MM
8	1	UL2468#26AWG 220MM 2P2H2.0MM
9	1	UL2468#26AWG 120MM&100MM 4P1H2.5
10	1	UL2468#26AWG 100MM 9P2H2.0&2.5MM
11	1	UL2547#28D/S 180MM 4P1H2.5MM
12	1	UL1007#26AWG 1500MM
13	1	UL1007#26AWG 80MM
14	1	CONNECTOR FFC R/A TYPE 16P/N 150M

录放板部份

★	190-001289-02	CASSTTE PCB M128PR/M138PR
1	113-122932-00	1 CAR.RESISTOR 2.2 OHM 1/2W
2	113-470105-12	2 CAR.RESISTOR 47 0HM 1/4W
3	113-101105-12	1 CAR.RESISTOR 100 OHM 1/4W
4	113-222105-12	3 CAR.RESISTOR 2.2K 1/4W
5	113-472105-12	2 CAR.RESISTOR 4.7K 1/4W
6	113-562105-12	2 CAR.RESISTOR 5.6K 1/4W
7	113-153105-12	2 CAR.RESISTOR 15K 1/4W
8	113-333105-12	2 CAR.RESISTOR 33K 1/4W
9	113-473105-12	2 CAR.RESISTOR 47K 1/4W
10	113-68305-12	2 CAR.RESISTOR 68K 1/4W
11	113-105005-11	1 CAR.RESISTOR 1M 1/4W
12	126-332071-01	4 MYLAR CAP 3300PF
13	126-223071-01	2 MYLAR CAP 0.022UF
14	123-223370-16	2 C.CAP 0.022UF
15	127-475048-01	2 ELE.CAP 4.7UF/10V
16	127-106048-01	3 ELE.CAP 10UF/10V
17	127-226048-01	1 ELE.CAP 22UF/10V
18	127-107048-01	3 ELE.CAP 100UF/10V
19	127-227048-01	2 ELE.CAP 220UF/10V
20	130-134148-00	1 DIODE IN4148
21	133-207312-11	1 IC AN7312
22	144-062040-05	1 REC SW 6P2T PS62D04 NO-SHOPTING
23	160-102205-02	1 PIN SOCKET 9PIN 2.5MM
24	160-104255-01	2 PIN SOCKET 4PIN 2.5MM
★	190-128A10-00	CD (TOSHIBA RW 方案)
1	133-942908-00	1 TC94A29FAG2008 (MCU)
2	133-002157-00	1 TC2157FN
3	133-1469PH-61	1 D9258PH可同MM1469PH通用
4	137-169344-30	1 CRYSTAL 16.9344MHZ
5	131-031015-00	1 TRANSISTOR 2SA1015GR
6	131-039012-03	1 TRANSISTOR S9012H
7	131-039014-03	3 TRANSISTOR 2SC9014C
8	131-239015-16	1 TRANSISTOR 2SC9015B
9	130-134148-00	2 TRANSISTOR COIL 10UH 1/4W(色环电感
10	113-100005-12	3 CARBON RESISTOR 10 OHM 1/16W
11	113-330005-12	1 CARBON RESISTOR 33 OHM 1/4W
12	113-101005-12	1 CARBON RESISTOR 100 OHM 1/16W
13	113-221005-12	5 CARBON RESISTOR 220 OHM 1/16W
14	113-102005-12	7 CARBON RESISTOR 1K 1/16W
15	113-222005-12	1 CARBON RESISTOR 2.2K 1/16W

16	113-472005-12	3	CARBON RESISTOR 4.7K 1/16W
17	113-562005-12	1	CARBON RESISTOR 5.6K 1/16W
18	113-103005-12	8	CARBON RESISTOR 10K 1/16W
19	113-153005-12	1	CARBON RESISTOR 15K 1/16W
20	113-223005-12	2	CARBON RESISTOR 22K 1/16W
21	113-823005-12	2	CARBON RESISTOR 82K 1/16W
22	113-474005-12	1	CARBON RESISTOR 470K 1/16W
23	113-225005-12	1	CARBON RESISTOR 2.2M 1/16W
24	配三星机芯:		
25	113-273005-02	1	CARBON RESISTOR 27K 1/16W
26	113-473005-12	2	CARBON RESISTOR 47K 1/16W
27	123-300350-16	1	C.CAP 3PF(NPO)
28	配SONY机芯:		
29	113-333005-12	1	CARBON RESISTOR 33K 1/16W
30	113-683005-12	5	CARBON RESISTOR 68K 1/16W
31	123-100350-16	1	C.CAP 1PF(NPO)
32	123-150350-16	2	C.CAP 15PF(NPO)
33	123-470350-16	1	C.CAP 47PF(NPO)
34	123-560350-16	1	C.CAP 56PF(NPO)
35	123-471350-16	2	C.CAP 470PF
36	123-222350-16	2	C.CAP 030022UF
37	123-472350-16	1	C.CAP 0.0047UF
38	123-333350-41	2	C.CAP 0.033UF
39	123-103350-41	3	C.CAP 0.01UF
40	123-473350-41	5	C.CAP 0.047UF
41	123-104250-41	12	C.CAP 0.1UF
42	126-222070-01	1	MYLAR CAP 0.0027 UF 50V
43	124-105072-01	1	E.CAP 1UF/10V
44	124-335072-01	2	E.CAP 3.3UF/50V
45	127-106048-01	1	E.CAP 10UF/16V
46	127-226048-01	1	E.CAP 22UF/16V
47	127-476048-01	8	E.CAP 47UF/16V
48	127-107028-01	2	E.CAP 100UF/10V
49	127-227028-01	1	E.CAP 220UF/10V
50	160-216106-02	1	CONNECTOR-FFC R/A TYPE 16PIN 1.0MM
51	160-102205-02	1	PIN SOCKET 2PIN 2.0MM
52	160-105205-02	1	PIN SOCKET 5PIN 2.0MM
53	160-106205-02	2	PIN SOCKET 6PIN 2.0MM
54	160-116205-02	2	PIN SOCKET 11PIN 2.0MM
55	190-128A10-00	1	CD PCB 108X89MM
选择VCD 2W 部分: (带VCD订单需增加此部份物料,取消CD板部份)			
1		1	解码板(小三星+3890ESS)
2	133-507805-61	1	KA7805
3	133-507808-61	1	KA7808
4	131-510772-00	1	TRANSISTOR B772
5	131-448050-03	2	TRANSISTOR 8050D
6	130-135392-00	4	DIODE IN 5392
7	113-101105-12	1	CAR. RESISTOR 100 OHM 1/16W
8	113-102105-12	2	CAR.RESISTOR 1K 1/16W
9	113-102104-12	1	CAR.RESISTOR 1K 1/4W
10	113-332105-12	1	CAR.RESISTOR 3.3K 1/16W
11	113-102105-12	1	CAR.RESISTOR 10K 1/16W
12	113-223105-12	1	CAR.RESISTOR 22K 1/16W
13	113-474105-12	1	CAR.RESISTOR 470K 1/16W

14	123-103370-16	1	C. CAP 0.01UF
15	123-203370-16	4	C.CAP 0.02UF
16	127-224048-01	3	ELE. CAP 0.22UF/50V
17	127-105048-01	2	ELE. CAP 1UF/50V
18	127-107038-01	1	ELE. CAP 100UF/16V
19	127-477038-01	3	ELE. CAP 470UF/16V
20	127-228058-01	1	ELE. CAP 2200UF/25V
21	733-005020-00	2	FUSE HOLDER
22	182-222000-00	1	FUSE 250V 2A(5X20MM)
23	714-990802-00	1	HEAT SINK
24	160-102255-01	2	PIN SOCKET 2 PIN 2.5MM
25	160-103255-01	5	PIN SOCKET 3 PIN 2.5MM