

Technical Service Data

Model no.: 20LW27

First Publish: 8-21-98

Rev. Date: 07-12-2007

Print Date: 12/07/2007

Service and Quality
Service Publications Dept.
One Philips Drive
P.O. Box 14810
Knoxville, TN 37914

Pg. SCHEMATIC DIAGRAMS AND PC BOARDS

- | | |
|--------------------------------------------|----------------------------------------------------------|
| 1. A8 MAIN CHASSIS (SECTION 1) | 9. A8 MAIN CHASSIS PCB (TOP) |
| 2. A8 MAIN CHASSIS (SECTION 2) | 10. A8 MAIN CHASSIS PCB (BOTTOM) |
| 3. A8 MAIN CHASSIS (SECTION 3) | 11. ASD039/040 LEAD STEREO (NON DBX) MODULE PCB (TOP) |
| 4. A8 MAIN CHASSIS (SECTION 4) | 12. ASD039/040 LEAD STEREO (NON DBX) MODULE PCB (BOTTOM) |
| 5. A8 MAIN CHASSIS (SECTION 5) | 13. ASD042/043 DBX STEREO MODULE PCB |
| 6. APT189 13", 19" & 20" CRT MODULE | 14. APT189 13", 19" & 20" CRT MODULE PCB (TOP) |
| 7. ASD039/040 LEAD STEREO (NON DBX) MODULE | 15. APT189 13", 19" & 20" CRT MODULE PCB (BOTTOM) |
| 8. ASD042/043/047 DBX STEREO MODULE | |

REFER TO SAFETY GUIDELINES

SAFETY NOTICE: ANY PERSON ATTEMPTING TO SERVICE THIS CHASSIS MUST FAMILIARIZE HIMSELF WITH THE CHASSIS AND BE AWARE OF THE NECESSARY SAFETY PRECAUTIONS TO BE USED WHEN SERVICING ELECTRONIC EQUIPMENT CONTAINING HIGH VOLTAGES.

CAUTION: USE A SEPARATE ISOLATION TRANSFORMER FOR THIS UNIT WHEN SERVICING

Technical Service Data

Service and Quality
Service Publications Dept.
One Philips Drive
P.O. Box 14810
Knoxville, TN 37914

Model no.: 20LW27
First Publish: 8-21-98
Rev. Date: 07-12-2007
Print Date: 12/07/2007

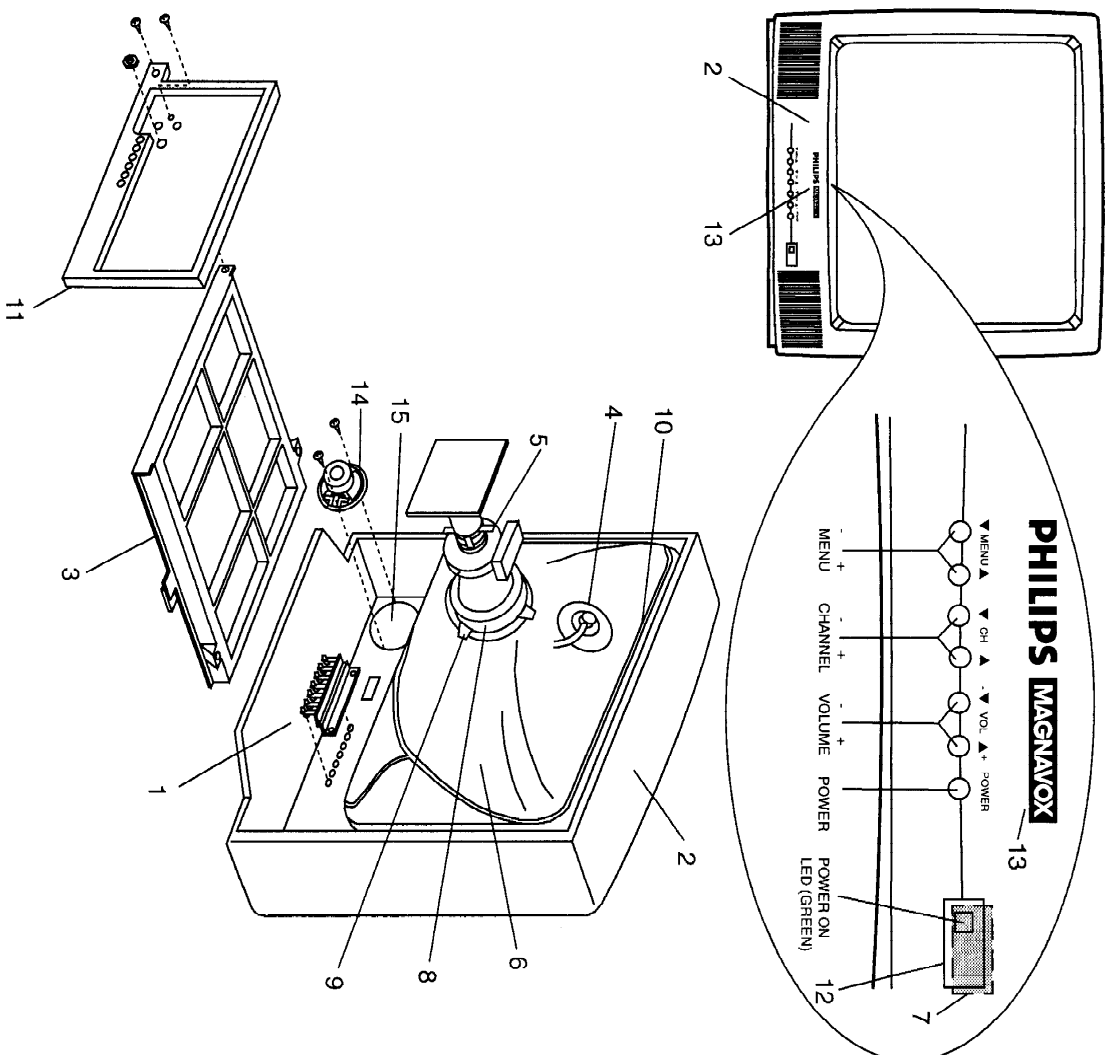
Mechanical Diagrams

REFER TO SAFETY GUIDELINES

SAFETY NOTICE: ANY PERSON ATTEMPTING TO SERVICE THIS CHASSIS MUST FAMILIARIZE HIMSELF WITH THE CHASSIS AND BE AWARE OF THE NECESSARY SAFETY PRECAUTIONS TO BE USED WHEN SERVICING ELECTRONIC EQUIPMENT CONTAINING HIGH VOLTAGES.

CAUTION: USE A SEPARATE ISOLATION TRANSFORMER FOR THIS UNIT WHEN SERVICING

TYPICAL TABLE MODEL EXPLODED VIEW



REF.	DESCRIPTION	REF.	DESCRIPTION
1	Button Assembly	9	Deflection Yoke Wedge (3 or 4 Used)
2	Cabinet Front	10	Degaussing Coil
3	Chassis Frame	11	Jack Panel Plastic
4	Clip w/Anode Lead	12	Lens f/IR Rec.*
5	Convergence & Purify Asm.	13	Name Plate
6	CRT	14	Speaker
7	Crystal*	15	Speaker Grille
8	Deflection Yoke		

*NOT ON ALL MODELS

Technical Service Data

Model no.: 20LW27

First Publish: 8-21-98

Rev. Date: 07-12-2007

Print Date: 12/07/2007

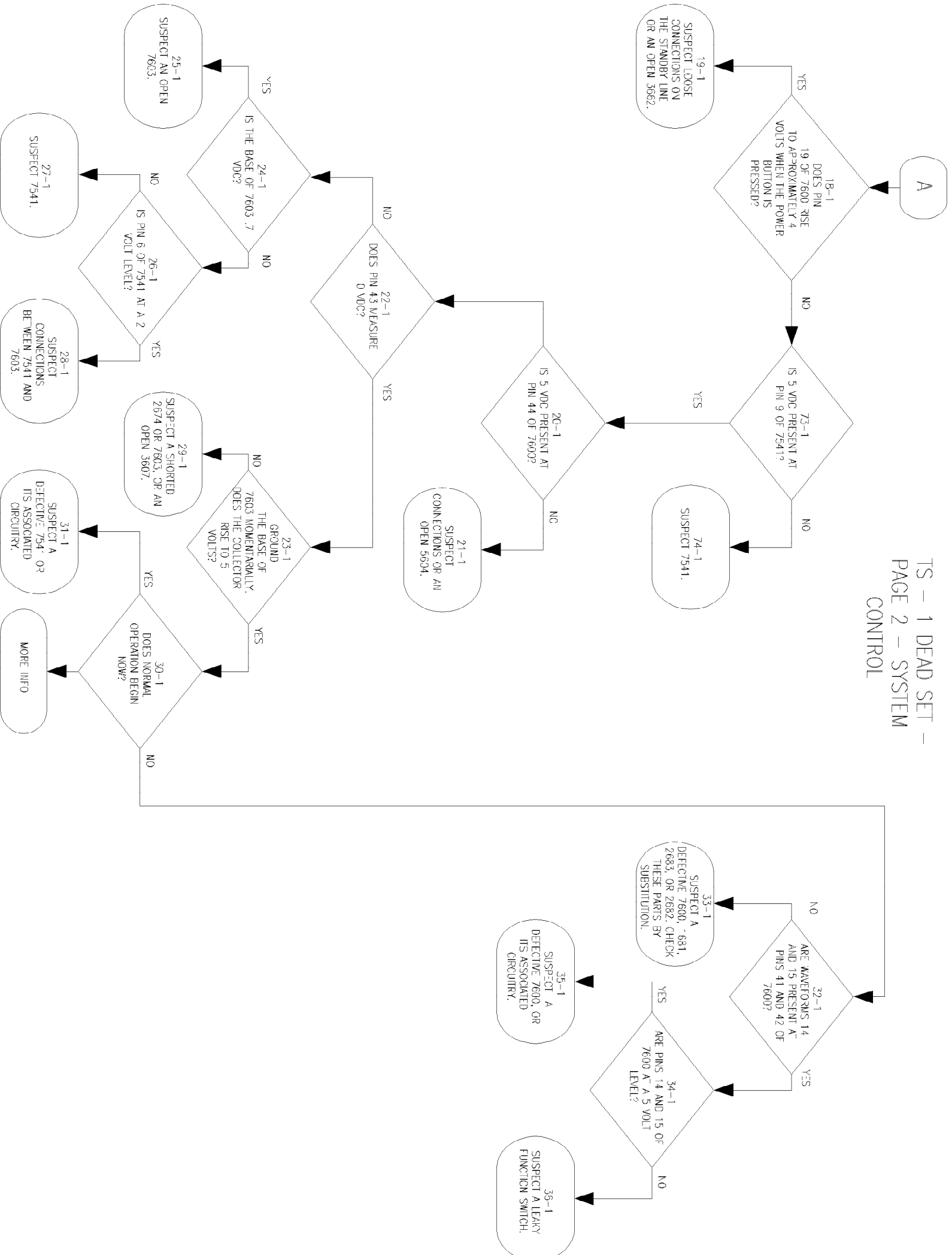
Service and Quality
Service Publications Dept.
One Philips Drive
P.O. Box 14810
Knoxville, TN 37914

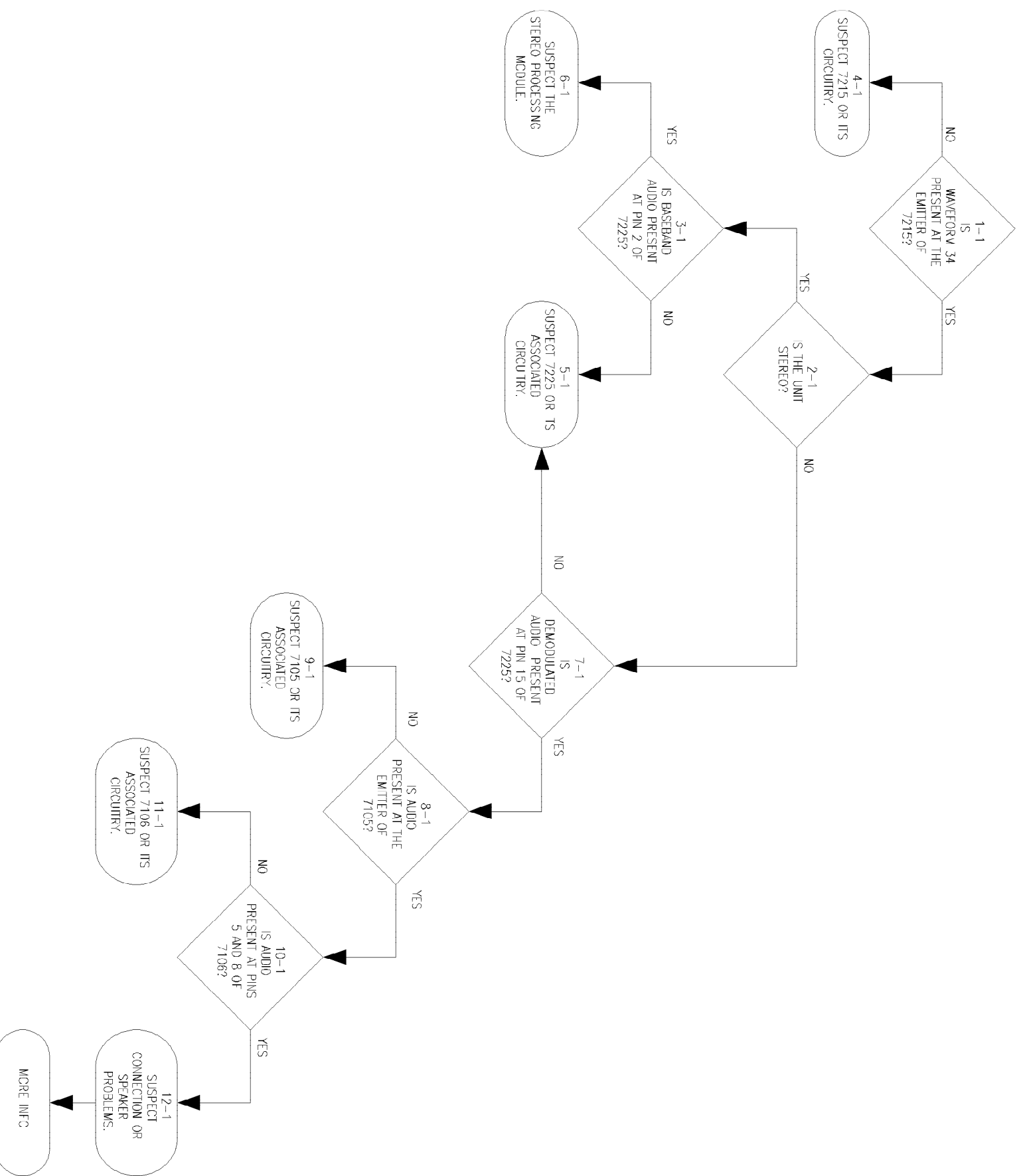
Troubleshooting

REFER TO SAFETY GUIDELINES

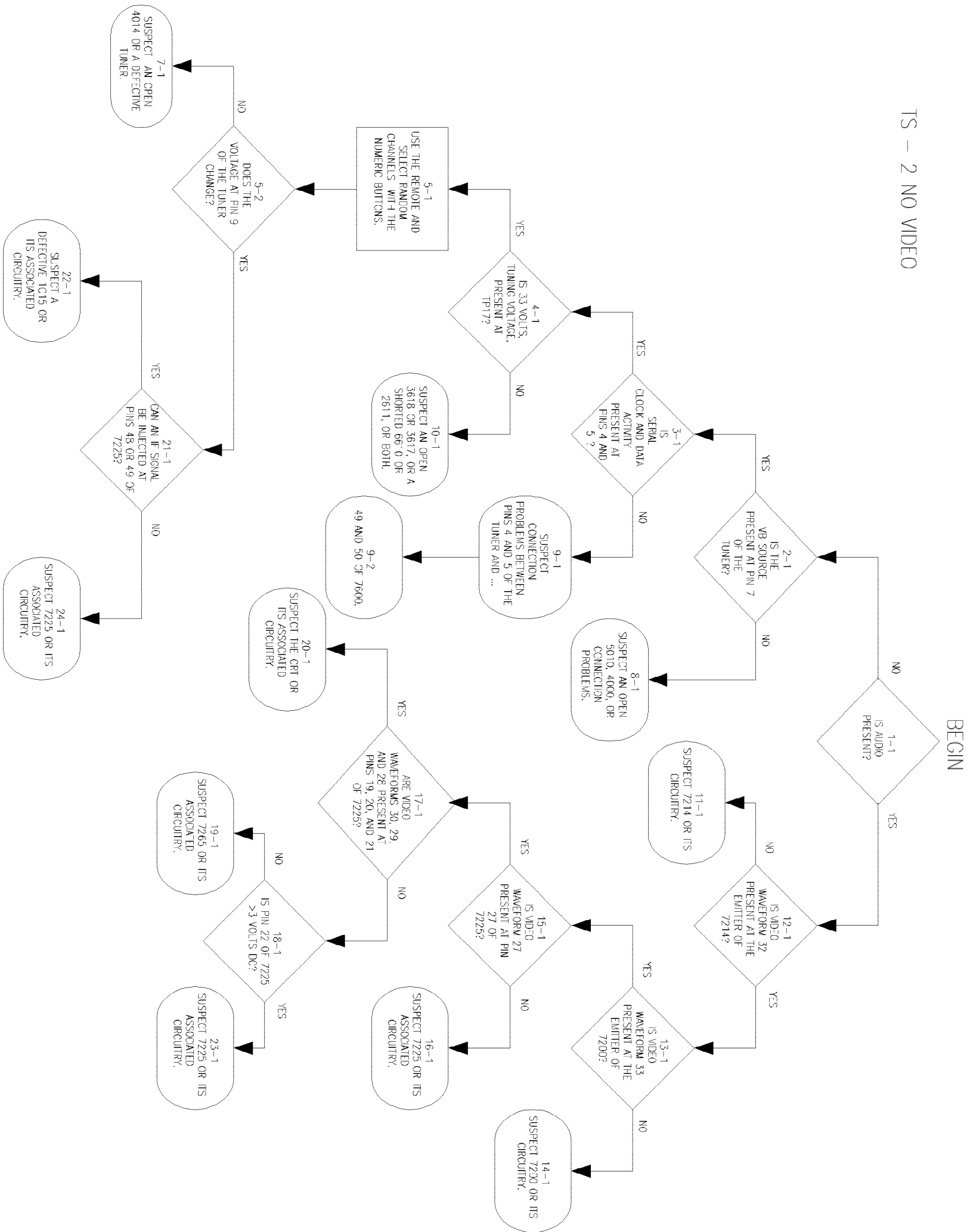
SAFETY NOTICE: ANY PERSON ATTEMPTING TO SERVICE THIS CHASSIS MUST FAMILIARIZE HIMSELF WITH THE CHASSIS AND BE AWARE OF THE NECESSARY SAFETY PRECAUTIONS TO BE USED WHEN SERVICING ELECTRONIC EQUIPMENT CONTAINING HIGH VOLTAGES.

CAUTION: USE A SEPARATE ISOLATION TRANSFORMER FOR THIS UNIT WHEN SERVICING

TS - 1 DEAD SET -
FACT 2 SYSTEM



TS - 2 NO VIDEO



Technical Service Data

Service and Quality
Service Publications Dept.
One Philips Drive
P.O. Box 14810
Knoxville, TN 37914

Model no.: 20LW27
First Publish: 8-21-98
Rev. Date: 07-12-2007
Print Date: 12/07/2007

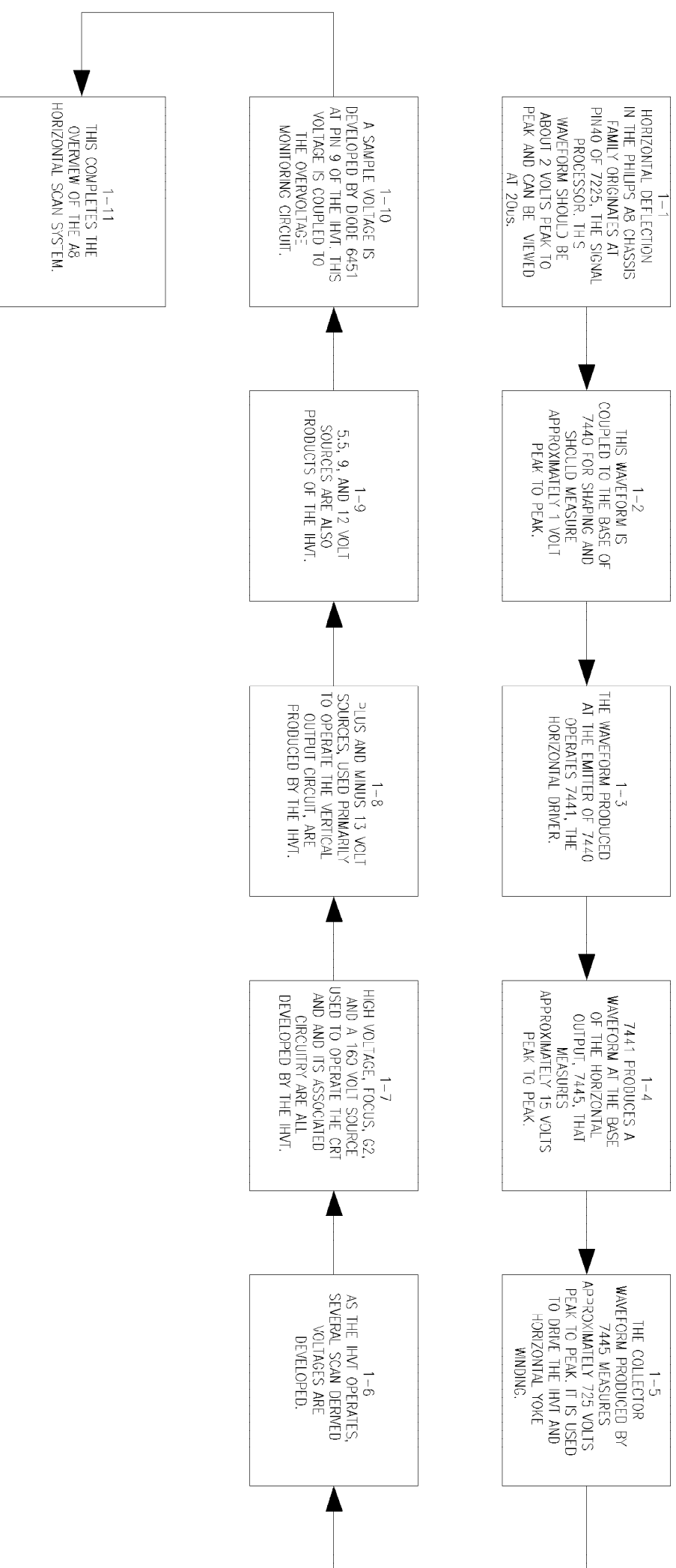
Training Information

REFER TO SAFETY GUIDELINES

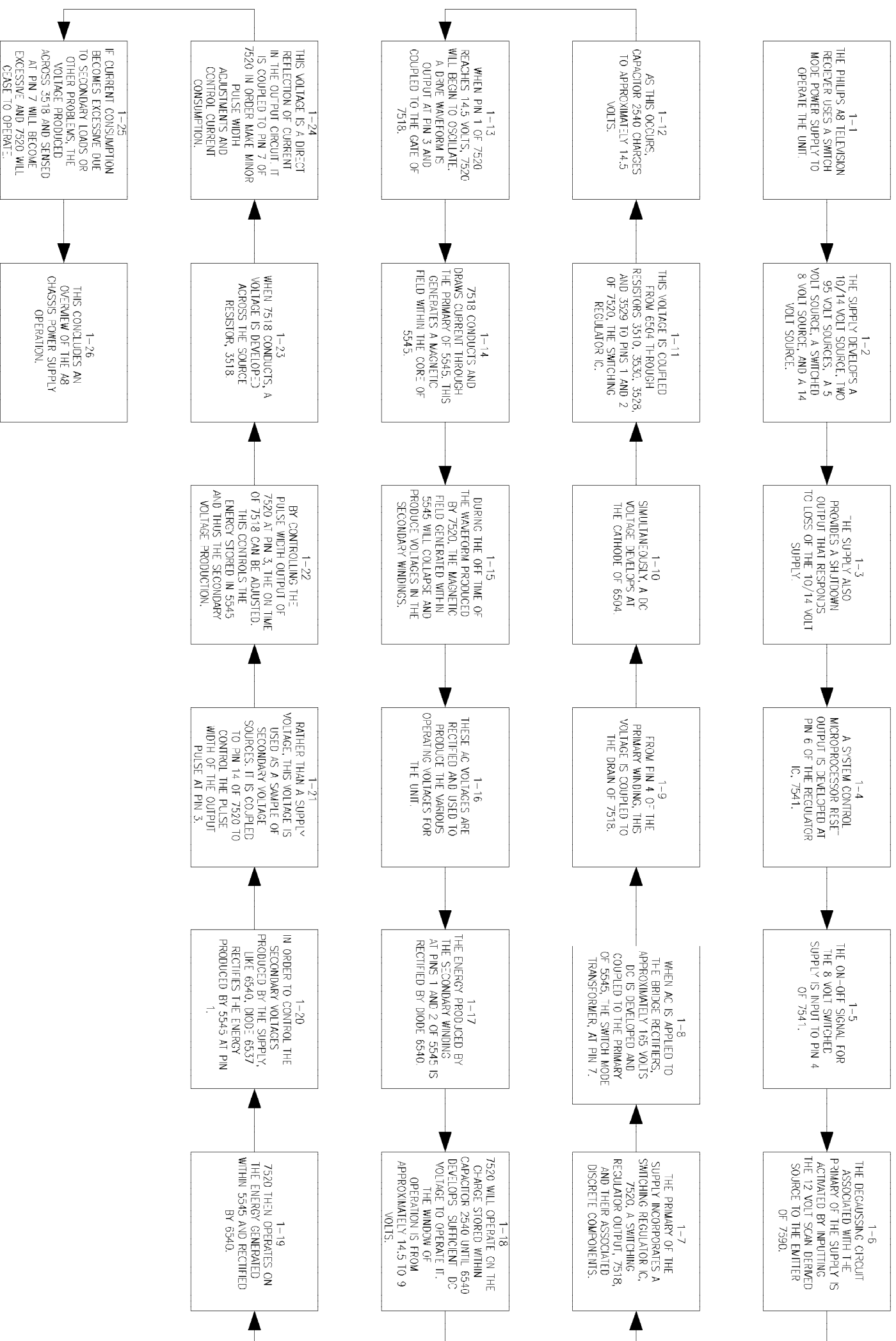
SAFETY NOTICE: ANY PERSON ATTEMPTING TO SERVICE THIS CHASSIS MUST FAMILIARIZE HIMSELF WITH THE CHASSIS AND BE AWARE OF THE NECESSARY SAFETY PRECAUTIONS TO BE USED WHEN SERVICING ELECTRONIC EQUIPMENT CONTAINING HIGH VOLTAGES.

CAUTION: USE A SEPARATE ISOLATION TRANSFORMER FOR THIS UNIT WHEN SERVICING

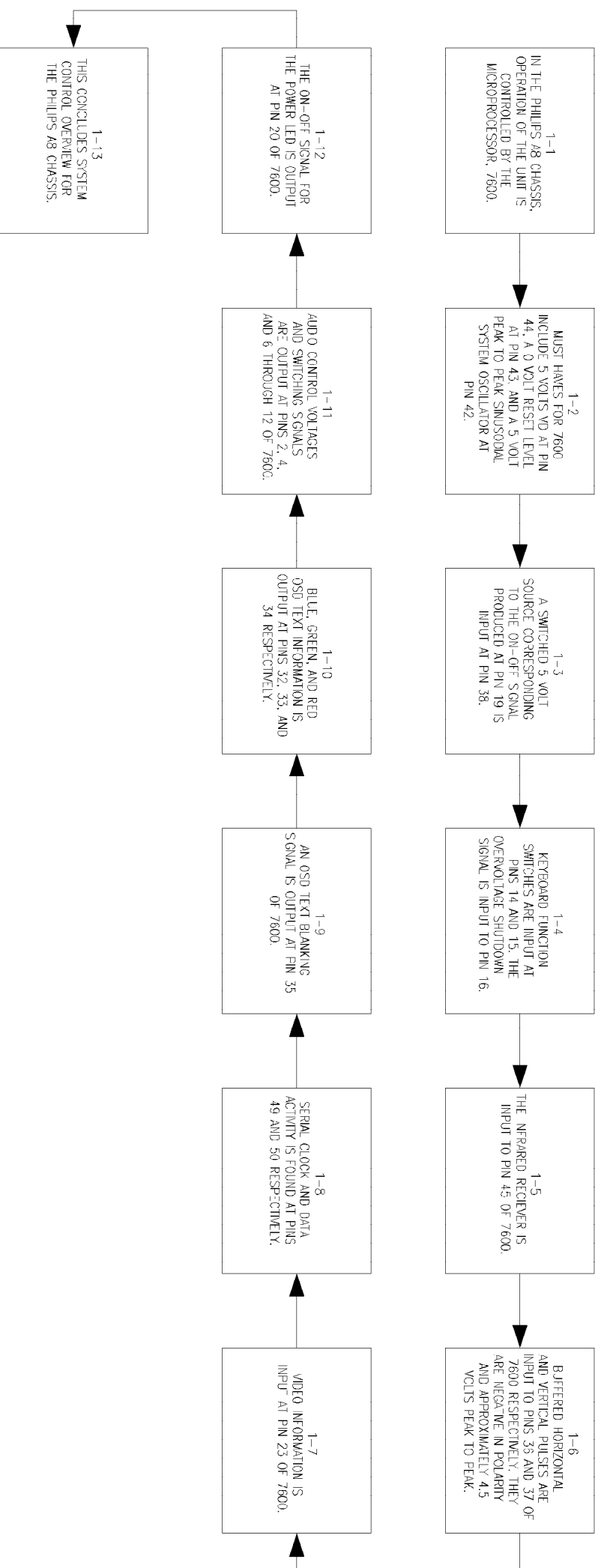
TR - 3 HORIZONTAL DEFLECTION FOR A8



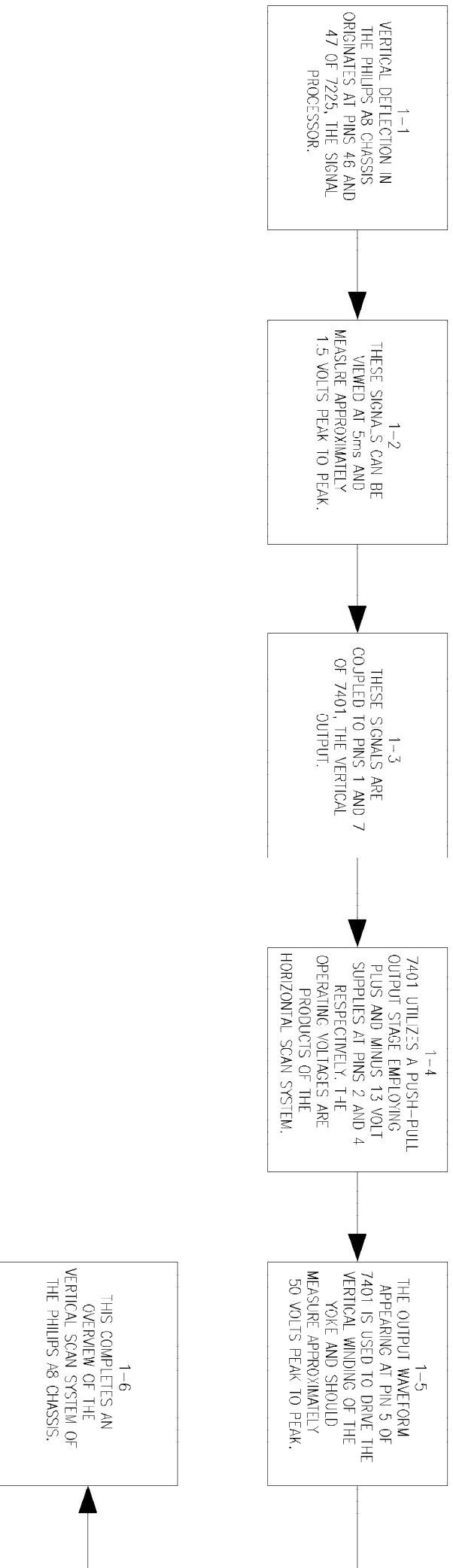
TRAINING FOR A8



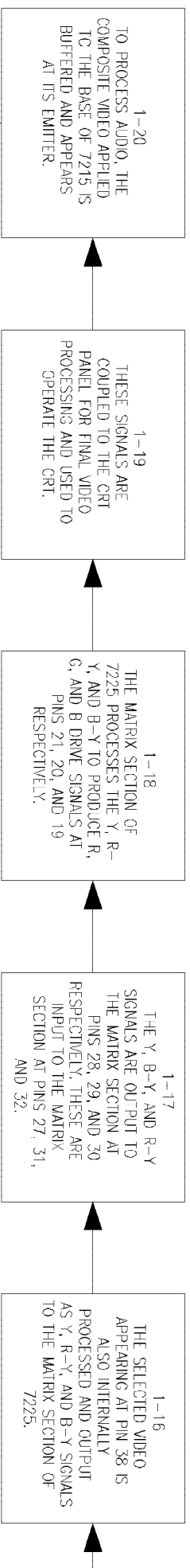
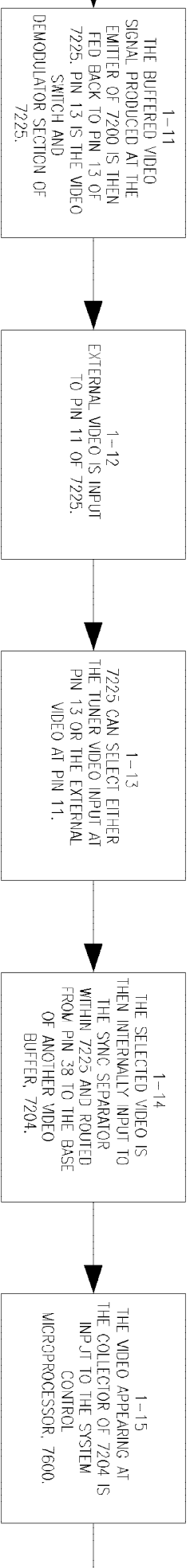
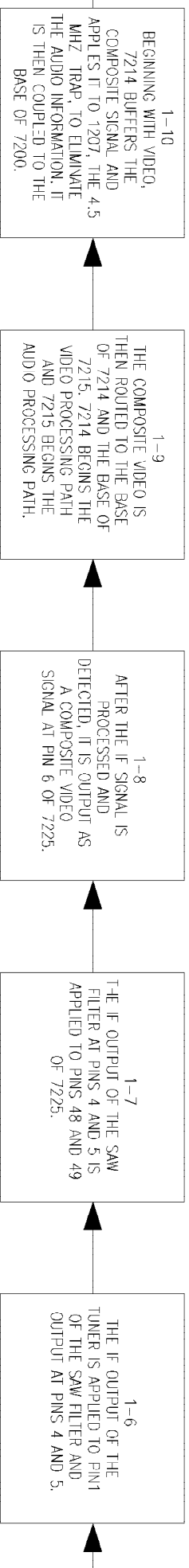
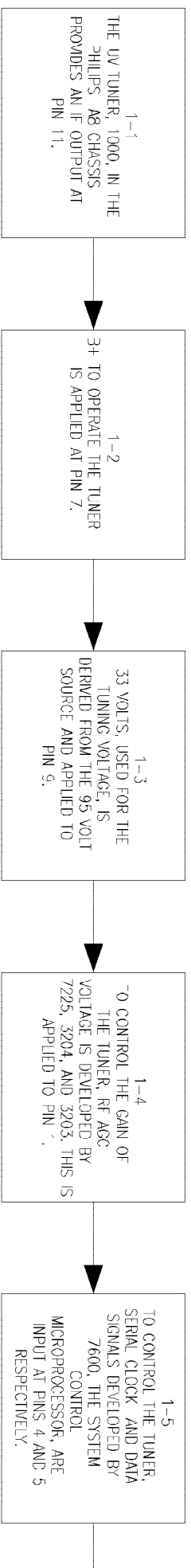
TR – 2 SYSTEM CONTROL TRAINING FOR A8



TR - 4 VERTICAL SCAN FOR A8



TR - 5 VIDEO AND AUDIO SIGNAL PATHS FOR A8



A

Technical Service Data

Service and Quality
Service Publications Dept.
One Philips Drive
P.O. Box 14810
Knoxville, TN 37914

Model no.: 20LW27
First Publish: 8-21-98
Rev. Date: 07-12-2007
Print Date: 12/07/2007

Parts List

REFER TO SAFETY GUIDELINES

SAFETY NOTICE: ANY PERSON ATTEMPTING TO SERVICE THIS CHASSIS MUST FAMILIARIZE HIMSELF WITH THE CHASSIS AND BE AWARE OF THE NECESSARY SAFETY PRECAUTIONS TO BE USED WHEN SERVICING ELECTRONIC EQUIPMENT CONTAINING HIGH VOLTAGES.

CAUTION: USE A SEPARATE ISOLATION TRANSFORMER FOR THIS UNIT WHEN SERVICING

A8 MAIN CHASSIS

2002	1uF,50V,Electrolytic	4835	121	47406	2450	0.68uF,250V,Polypro(W/A48JLL40X46 CRT)	4835	121	47653
2005	100pF,5%,50V,Ceramic(Not Used In 20" La tam)	4835	122	87012	2450	0.39uF,250V,Polypro(20" Models)	4835	121	47607
2008	1000pF,50V,Ceramic	4835	122	87023	2451	1uF,63V,Polyester	4835	121	47427
2010	2200uF,16V,Electrolytic	4835	124	47701	2452	470uF,10V,Electrolytic	4835	124	47705
2011	100pF,5%,50V,Ceramic(Not Used In 20" La tam)	4835	122	87012	2453	470uF,25V,Electrolytic	4835	124	47719
2016	0.047uF,25V,Electrolytic	4835	124	47708	2455	10uF,50V,Electrolytic	4835	124	47499
2104	10uF,50V,Electrolytic (19" w/Chld Lck)	4835	124	47499	2456	1uF,160V,Electrolytic	4835	124	47709
2105	10uF,50V,Electrolytic (19" w/Chld Lck)	4835	124	47499	2460	0.033uF,100V,Polyester	4835	121	47598
2108	10uF,50V,Electrolytic	4835	124	47499	2461	27pF,50V,Ceramic	4835	122	47607
2110	1uF,50V,Electrolytic (Stereo models)	4835	121	47406	2462	4700pF,2kV,Ceramic	4835	122	47635
2113	10uF,50V,Electrolytic (19" w/Chld Lck)	4835	124	47499	2463	100uF,50V,Electrolytic	4835	124	47563
2114	10uF,50V,Electrolytic (19" w/Chld Lck)	4835	124	47499	2464	0.1uF,50V,Ceramic	4835	122	87375
2115	100uF,50V,Electrolytic (w/Headphones)	4835	124	47563	2465	820pF,50V,Ceramic	4835	122	87589
2116	100uF,50V,Electrolytic (w/Headphones)	4835	124	47563	2466	390pF,50V,Ceramic	4835	122	87094
2117	56pF,50V,Ceramic	4835	122	87373	2467	820pF,50V,Ceramic	4835	122	87589
2120	50V470pF,Ceramic(13",19"w/Chld Lck,w/AS D039,Latam)	4835	122	47614	2468	0.1uF,50V,Ceramic	4835	122	87375
2121	470pF,50V,Ceramic (19" w/Chld Lck,ASD03 9 ,Latam)	4835	122	47614	2469	390pF,2kV,Ceramic	4835	122	47628
2128	100pF,5%,50V,Cer(19" St w/A48KRD89X ,AS D039/040)	4835	122	87012	2470	22uF,250V,Electrolytic	4835	124	47021
2128	33pF,50V,Cer(19"w/Chld Lck & A48KRD89X ,All Latam)	4835	122	87414	S 2471	0.022uF,50V,Ceramic	4835	122	47617
2128	4700pF,50V,Ceramic (13&19"Mono)	4835	122	87415	2476	390pF,50V,Ceramic	4835	122	87094
2129	10uF,50V,Electrolytic	4835	124	47499	2480	1000uF,16V,Electrolytic	4835	124	47699
2130	2200pF,50V,Ceramic (13"w/Chld Lck)	4835	122	87544	2485	820pF,50V,Ceramic	4835	122	87589
2131	82pF,50V,Ceramic	4835	122	87593	2487	820pF,50V,Ceramic	4835	122	87589
2132	330pF,50V,Ceramic	4835	122	87287	S 2500	0.47uF,250V,Polyester	4835	121	47569
2136	0.47uF,63V,Polyester(All 13&19" Mono)	4822	121	42008	2502	2200pF,2kV,Ceramic	4835	122	47624
2137	2200pF,50V,Ceramic (13&19"Mono)	4835	122	87544	2504	2200pF,2kV,Ceramic	4835	122	47624
2140	47uF,50V,Electrolytic(All 13&19" Mono)	4835	124	47668	2505	2200pF,2kV,Ceramic	4835	122	47624
2141	0.22uF,63V,Polyester (All 13&19" Mono)	4835	121	47603	2508	330uF,200V,Elec(Not Used In 13"AMV&19" 20"Latam)	4835	124	47669
2142	220uF,25V,Electrolytic(All 13&19" Mono)	4835	124	47557	2508	220uF,400V,Electrolytic(13"AMV&19" 20"L atam)	4835	124	47711
2143	0.1uF,50V 10%,Ceramic (13&19"Mono)	4835	122	87375	2510	470pF,1kV,Ceramic	4835	122	47459
2144	1uF,50V,Electrolytic (All 13&19" Mono)	4835	121	47406	2517	1000pF,50V,Ceramic	4835	122	87023
2198	330pF,10%,50V,Ceramic(w/Headphones)	4835	122	47185	2518	330pF,1kV,Ceramic	4835	122	47632
2199	330pF,10%,50V,Ceramic(w/Headphones)	4835	122	47185	2519	470pF,50V,Ceramic	4835	122	47614
2200	0.1uF,50V,Ceramic	4835	122	87375	2520	82pF,50V,Ceramic	4835	122	87593
2201	0.022uF,50V,Ceramic	4835	122	87538	2521	2200pF,50V,Ceramic	4835	122	87544
2202	0.22uF,100V,Electrolytic	4835	121	47092	2522	2200pF,50V,Ceramic	4835	122	87544
2203	0.1uF,16V,Ceramic	4835	122	87595	2524	470pF,50V,Ceramic	4835	122	87451
2209	0.1uF,50V,Ceramic	4835	122	87375	2529	0.1uF,50V,Ceramic	4835	122	87375
2211	2.2uF,50V,Electrolytic	4835	124	47502	2530	1uF,50V,Electrolytic	4835	121	47406
2212	.022uF,50V,Ceramic	4835	122	87538	2531	560pF,630V,Polypro	4835	121	47656
2213	0.1uF,50V,Ceramic	4835	122	87375	2532	1000pF,50V,Ceramic (Not Used In Latam)	4835	122	87023
2215	0.22uF,25V,Ceramic	4835	122	87594	2533	330pF,50V,Ceramic	4835	122	87287
2217	100uF,10V,Electrolytic	4835	124	47704	2534	1000pF,50V,Ceramic	4835	122	87023
2221	0.1uF,50V,Ceramic	4835	122	87375	2537	0.1uF,63V,Polyester	4835	121	47602
2222	0.1uF,50V,Ceramic	4835	122	87375	2540	100uF,25V,Electrolytic	4835	124	47501
2223	100pF,5%,50V,Ceramic	4835	122	87012	S 2541	4700pF,50V,Polyester	4835	121	47592
2224	1000uF,16V,Electrolytic	4835	124	47699	S 2545	4700pF,250V,Ceramic	4835	122	97023
2225	100pF,5%,50V,Ceramic	4835	122	87012	S 2546	4700pF,250V,Ceramic (All w/Headphones)	4835	122	97023
2226	1uF,50V,Electrolytic	4835	121	47406	2550	1000pF,10%,1kV,Ceramic	4835	122	47663
2260	10uF,50V,Electrolytic	4835	124	47499	2551	47uF,160V,Electrolytic	4835	124	47712
2261	.022uF,50V,Ceramic	4835	122	87538	2552	470pF,500V,Ceramic	4835	122	47211
2272	3300pF,50V,Ceramic	4835	122	87294	2553	1000pF,50V,Ceramic	4835	122	87369
2273	0.1uF,16V,Ceramic	4835	122	87595	2554	0.22uF,16V,Ceramic	4835	122	87603
2277	15pF,50V,Ceramic	4835	122	87592	2555	0.22uF,25V,Ceramic	4835	122	87594
2283	.047uF,50V,Ceramic	4835	122	87503	2560	1500pF,50V,Ceramic(w/A48KRD89X CRT,All 13" &Latam)	4835	122	87591
2284	.047uF,50V,Ceramic	4835	122	87503	2561	2200uF,25V,Electrolytic	4835	124	47593
2285	0.047uF,50V,Ceramic	4835	122	87503	2562	2200uF,25V,Electrolytic	4835	124	47593
2403	1uF,50V,Electrolytic	4835	121	47406	2563	220uF,16V,Electrolytic	4835	124	47734
2406	2200pF,50V,Ceramic	4835	122	87544	2570	1000pF,50V,Ceramic	4835	122	87369
2409	4700pF,50V,Ceramic	4835	122	87415	2571	1500uF,35V,Electrolytic	4835	124	47714
2410	0.1uF,63V,Polyester	4835	121	47602	2572	100pF,5%,50V,Ceramic	4835	122	87012
2414	0.22uF,63V,Polyester	4835	121	47603	2585	0.022uF,50V,Ceramic (Not Used In 13")	4835	122	87538
2420	0.1uF,50V,Ceramic	4835	122	87375	2586	0.047uF,25V,Electrolytic	4835	124	47708
2421	10uF,50V,Electrolytic	4835	124	47499	2601	0.22uF,25V,Ceramic	4835	122	87594
2425	22uF,25V,Electrolytic	4835	124	47707	2602	0.047uF,25V,Electrolytic	4835	124	47708
2430	10uF,50V,Electrolytic	4835	124	47499	2603	1000pF,10%,50V,Ceramic (All Stereo Mode ls)	4835	122	87023
2434	0.1uF,50V,Ceramic	4835	122	87375	2604	1000pF,10%,50V,Ceramic	4835	122	87023
2436	1000pF,50V,Ceramic	4835	122	87023	2605	1000pF,10%,50V,Ceramic (All Stereo Mode ls)	4835	122	87023
2437	1000pF,50V,Ceramic	4835	122	87023	2606	1000pF,10%,50V,Ceramic (All Stereo Mode ls)	4835	122	87023
2440	2200pF,50V,Polyester	4835	121	47589	2607	1000pF,10%,50V,Ceramic(19"St wA48KRD89X ,19"Latam)	4835	122	87023
2442	0.22uF,25V,Ceramic	4835	122	87594	2611	10uF,50V,Electrolytic	4835	124	47499
2443	470uF,25V,Electrolytic	4835	124	47719	2621	82pF,50V,Ceramic	4835	122	87593
2444	1uF,63V,Polyester	4835	121	47427	2622	82pF,50V,Ceramic	4835	122	87593
S 2445	9100pF,1.6kV,Polypro (W/A48JLL40X46 CRT	4835	121	47654	2623	0.022uF,50V,Ceramic	4835	122	87538
S 2445	0.01uF,1.6kV,Polypro (W/A48KRD89X CRT,)	4835	121	47611	2630	10uF,50V,Electrolytic	4835	124	47499
S 2445	8200pF,1.6kV,Pp(13",20"&W/A48KZL70X/A48 AFN36X CRT)	4835	121	47614	2639	0.1uF,10%,50V,Ceramic	4835	122	87375
2448	47uF,160V,Electrolytic	4835	124	47713	2650	820pF,50V,Ceramic	4835	122	87589
2449	330pF,10%,1kV,Ceramic(W/A48JLL40X46 CRT	4835	122	47662	2652	820pF,50V,Ceramic	4835	122	87589
2449	220pF,10%,1kV,Ceramic(W/A48KRD89X CRT)	4835	122	47661	2653	0.01uF,50V,Ceramic	4835	122	87024
2449	1000pF,10%,1kV,Ceramic(W/A48KZL70X CRT)	4835	122	47373	2654	470uF,25V,Electrolytic	4835	124	47719
2449	470pF,10%,1kV,Ceramic (20"Models)	4835	122	47459	2664	0.1uF,50V,Ceramic	4835	122	87375
2449	820pF,10%,1kV,Ceramic(W/A48AFN36X CRT)	4835	122	47625	2666	0.1uF,50V,Ceramic	4835	122	87375
2450	0.47uF,250V,Polypro(13" Models)	4835	121	47608	2670	100pF,5%,50V,Ceramic	4835	122	87012
2450	.56uF,250V,Pp(19" Mdls Not Mdls w/A48JL L40X46 CRT)	4835	121	47609	2671	100uF,25V,Electrolytic	4835	124	47501
	S = Safety Part Be sure to use exact replacement part.				2674	100pF,5%,50V,Ceramic	4835	122	87012

2679	100pF,10%,50V,Ceramic	4835	122	47004	3401	4.7 ohm,5%,1/2W,MF (W/A48AFN36X) . . .	4835	110	47023
2681	0.1uU,10%,50V,Ceramic	4835	122	87375	3401	3.9 ohm,5%,1/2W,MF(NotUsed In 13" or w/ A48AFN36X)	4835	116	57781
2682	47pF,50V,Ceramic	4835	122	87017					
2683	27pF,50V,Ceramic	4835	122	87381	3402	4.7 ohm,5%,1/2W,MF (W/A48AFN36X CRT) . . .	4835	110	47023
2685	220pF,50V,Ceramic	4835	122	87544	3402	9.1 ohm,1/2W,MF(All 13" Models)	4835	116	57744
2690	100pF,5%,50V,Ceramic	4835	122	87381	3402	3.9 ohm,5%,1/2W,MF(NotUsed In 13" or w/ A48AFN36X)	4835	116	57781
2691	100pF,5%,50V,Ceramic	4835	122	87381					
2692	100pF,5%,50V,Ceramic	4835	122	87381	3403	15k,1/10W,MF	4835	111	37458
2693	100pF,5%,50V,Ceramic	4835	122	87381	3404	2.2k,2/3W,MF	4835	116	57676
2694	0.1uF,50V,Ceramic (Models	4835	122	87375	3406	220 ohm,1/2W,MF	4835	116	57705
2695	0.1uF,50V,Ceramic (Models	4835	122	87375	3407	220 ohm,1/2W,MF	4835	116	57705
3020	100 ohm,1/10W,MF	4835	111	37432	3410	139k,1/10W,MF	4835	111	27051
3022	100 ohm,1/10W,MF	4835	111	37432	3411	2.2k,2/3W,MF	4835	116	57676
3050	10 ohm,1/2W,MF	4835	116	57097	3412	10k,1/10W,MF	4835	111	37216
3120	270 ohm,1/10W,MF (13&19"Mono)	4835	111	37424	S 3413	1.5 ohm,1/3W,MF	4835	116	57664
3121	150 ohm,1/2W,MF (All Stereo W/ASD039 Bo ard)	4835	116	57696	3415	1.0k,5%,1/10W,MF	4822	051	10102
3121	1.0k,5%,1/10W,MF (13&19"Mono)	4835	116	57685	3417	1.0k,5%,1/10W,MF	4822	051	10102
3123	6.8k,1/2W,MF (13&19"Mono)	4835	116	57736	3418	100k,1/10W,MF	4835	111	37434
3128	1.8k,1/2W,MF (13&19"Mono)	4835	116	57702	3419	1M,1/10W	4835	111	37217
3130	47k,1/2W,MF (13&19"Mono)	4835	116	57725	3420	22k,1/2W,MF	4835	116	57706
3131	270 ohm,1/2W,MF (13&19"Mono)	4835	116	57709	3421	82k,1/10W,MF	4835	111	37277
3141	1.0k,5%,1/10W,MF (13&19"Mono)	4822	051	10102	3422	22k,1/2W,MF	4835	116	57706
3141	0 ohm (All Stereo Models)	4835	111	27056	3423	1.0k,5%,1/10W,MF	4822	051	10102
3160	22k,1/2W,MF (19"w/Chld Lck,w/ASD039,Lat am)	4835	116	57706	3427	8.2k,1/2W,MF	4835	116	57742
3161	4.6k,1/2W,MF (19"w/Chld Lck,w/ASD039,La tam)	4835	116	57724	3428	820 ohm,1/10W,MF	4835	111	37466
3162	22k,1/2W,MF (13",19"w/Chld Lck,w/ASD039 Latam)	4835	116	57706	S 3430	4.7 ohm,1/3W,MF	4835	116	57667
3163	4.6k,1/2W,MF(19"Stereo w/ASD039/043,Lat am&13")	4835	116	57724	S 3431	4.7k,5%,1/2W,MF (20")	4835	116	57778
3164	75ohm,1/2W,MF(13",19"w/Chld Lck,w/ASD03 9,Latam)	4835	116	57739	S 3432	4.7k,5%,1/2W,MF (20")	4835	116	57778
3165	22 ohm,1/2W,MF(13",19" w/Chld Lck,w/ASD 039,Latam)	4835	116	57708	3433	33k,1/2W,MF	4835	116	57715
3171	47k,5%,1/10W,MF (19" w/Chld Lck)	4835	111	37445	3434	10k,1/10W,MF	4835	111	37216
3172	750 ohm, 5%,1/10W,MF (19" w/Chld Lck)	4835	111	27088	3435	270k,1/2W,MF	4835	116	57756
3173	1.2k,5%,1/2W,MF(19" w/Chld Lck)	4835	116	57691	3436	1k,1/2W,MF	4835	116	57685
3174	470 ohm,1/10W,MF (19" w/Chld Lck)	4835	111	37259	3437	1k,1/2W,MF	4835	116	57685
3175	220k,1/10W,MF (19" w/Chld Lck)	4835	111	37235	3440	1.0k,5%,1/10W,MF	4822	051	10102
3176	1.0k,5%,1/10W,MF(19" w/Chld Lck)	4822	051	10102	3441	120k,1/10W,MF	4835	111	27043
3177	100k,5%,1/10W,MF (19" w/Chld Lck)	4835	111	37434	3442	22 ohm,1/2W,MF	4835	116	57708
3178	47k,5%,1/10W,MF (19" w/Chld Lck)	4835	111	37445	3443	560 ohm,1/10W,MF	4835	111	27054
3179	750 ohm, 5%,1/10W,MF (19" w/Chld Lck)	4835	111	27088	S 3444	10k,2W,Metal Oxide	4835	116	67241
3180	1.2k,5%,1/2W,MF (19" w/Chld Lck)	4835	116	57691	3445	10 ohm,2W,Metal Oxide	4835	116	67236
3181	470 ohm,1/10W,MF (19" w/Chld Lck)	4835	111	37259	3446	1.5k,2/3W,MF	4835	116	57675
3182	220k,1/10W,MF (19" w/Chld Lck)	4835	111	37235	3447	1k,1/2W,MF	4835	116	57685
3183	1.0k,5%,1/10W,MF(19" w/Chld Lck)	4822	051	10102	3448	5.6 ohm,5%,5W,Wire Wound	2322	251	41568
3184	100k,1/10W,MF (19" w/Chld Lck)	4835	111	37434	S 3449	1 ohm,1/2W,MF	4835	116	57109
3192	47ohm,1/2W,MF(13w/Chld,19w/A48KRD89X & ChldLk,Lat)	4835	116	57727	S 3450	3.9 ohm,1/3W,MF	4835	116	57666
3193	47ohm,1/2W,MF(13"ChldLk,19"w/A48KRD89X/ ChldLk,Lat)	4835	116	57727	S 3451	1 ohm, 5%,1/2W,MF	4835	116	57109
3201	390 ohm,1/10W,MF	4835	111	37253	S 3452	1 ohm,1/3W,MF	4822	111	30483
3202	1.0k,5%,1/10W,MF	4822	051	10102	3456	68k,1/2W,MF	4835	116	57737
3203	22k,1/10W,MF (W/A48KRD89X CRT,13"& Lata m)	4835	111	37441	3457	68k,1/2W,MF	4835	116	57737
3204	4.6k,1/10W,MF	4835	111	27052	3458	68k,1/2W,MF	4835	116	57737
3205	1.8k,5%,1/10W	4835	111	37231	3459	1.2k,2/3W,MF	4835	116	57674
3206	100 ohm,1/10W,MF	4835	111	37432	3460	10k,5%,1/2W,MF(Not Used In 13")	4835	116	57686
3207	220 ohm,1/2W,MF	4835	116	57705	3461	15k,1/2W,MF(13")	4835	116	57698
3208	220 ohm,5%,1/2W,MF	4835	116	57799	3462	27k,1/2W,MF	4835	116	57712
3209	1.0k,5%,1/10W,MF	4822	051	10102	S 3470	6.8k,1/2W,MF	4835	116	57736
3210	470 ohm,5%,1/2W,MF	4835	116	57723	S 3471	4.7 ohm, 5%,1/2W,MF	4835	110	47023
3211	470 ohm,1/10W,MF	4835	111	37259	S 3480	33 ohm,2W,Metal Oxide	4835	116	67237
3212	1k,5%,1/10W,MF	4822	051	10102	S 3481	10 ohm,5%,1/2W,MF	4835	116	57097
3214	1.0k,5%,1/10W,MF	4822	051	10102	S 3481	220 ohm,1W,Metal Oxide	4835	116	57603
3215	1.0k,5%,1/10W,MF	4822	051	10102	S 3500	275V,Variable Resistor	4835	130	87143
3216	390 ohm,1/10W,MF	4835	111	37253	3501	470 ohm,1/2W,Carbon Composition	4835	110	47212
3217	390 ohm,1/10W,MF	4835	111	37253	S 3502	4.7 ohm,1/2W,MF (Not Used In 19" & 20"L atam)	4835	116	57009
3218	1.0k,5%,1/10W,MF	4822	051	10102	3503	10ohm,120VAC,PTC(NotUsed In 13"AMV,19"L atam,20")	4835	116	47001
3220	100 ohm,1/2W,MF	4835	116	57684	3504	9 ohm,30%,200V,PTC (13" AMV,19" Latam & 20")	4835	116	47014
3221	100 ohm,1/2W,MF	4835	116	57684	S 3506	2.2 ohm,5W,Wire Wound	4835	112	27037
3223	1k,1/2W,MF	4835	116	57685	S 3507	220 ohm,3W,Metal Oxide (Not Used In AMV Models)	4835	116	67246
3224	560k,5%,1/10W,MF	4835	111	27094	S 3508	220 ohm,3W,Metal Oxide (Not Used In AMV Models)	4835	116	67246
3225	56 ohm,1/10W,MF	4835	111	27058	S 3510	22k,3W,Metal Oxide (Not Used In Latam M odels)	4835	116	67249
3227	56 ohm,1/10W,MF	4835	111	27058	S 3510	33k,3W,Metal Oxide (Latam)	4835	116	67251
3229	56 ohm,1/10W,MF	4835	111	27058	3512	15k,1/10W,MF	4835	111	37458
3230	1k,5%,1/10W	4822	051	10102	3513	180k,1/10W,MF	4835	111	37484
3231	1k,5%,1/10W	4822	051	10102	S 3514	200 ohm,5%,5W,Metal Oxide (Not Used In AMV)	4835	116	67284
S 3234	2.2 ohm,1/3W,MF	4822	052	10228	S 3515	200 ohm,5%,5W,Metal Oxide (Not Used In AMV)	4835	116	67284
3255	1.0k,5%,1/10W,MF	4822	051	10102	3517	10k,1/10W,MF	4835	111	37216
3256	1.0k,5%,1/10W,MF	4822	051	10102	S 3518	0.22 ohm,5%,3W,Metal Oxide	4835	116	67242
3257	1.0k,5%,1/10W,MF	4822	051	10102	3520	82k,1/10W,MF	4835	111	37277
3265	560 ohm,1/10W,MF (13" & 20")	4835	111	27054	3521	330 ohm,1/2W,MF	4835	116	57713
3265	3.3k,1/10W,MF (Not Used In 13" & 20")	4835	111	37247	3525	33 ohm,1/3W,MF	4835	116	57727
3266	100 ohm,1/2W,MF	4835	116	57684	3528	150 ohm,1/2W,MF	4835	116	57696
3267	1/10W,15k,MF	4835	111	37458	3529	4.7 ohm,1/2W,MF	4835	110	47023
3273	100k,1/10W,MF	4835	111	37434	3530	3.9k,1/2W,MF	4835	116	57721
3280	560 ohm,1/2W,MF	4835	116	57731	3532	0 ohm,MF (20" Latam)	4835	111	27056
3401	3.3 ohm,1/2W,MF(W/A48KZL70X, A48JLL40X4 6,All 13")	4835	116	57717	3532	5.6k,1/10W,MF (Not Used In 20" Latam)	4835	111	37376
					3534	220k,1/10W,MF	4835	111	37235
					3536	39k,1/10W,MF	4835	111	27051

S = Safety Part Be sure to use exact replacement part.

3537	10k,1/10W,MF	4835	111	37216	6443	Diode BYD33D	4835	130	37009
3538	100k,1/2W,MF	4835	116	57687	6444	Zener Diode BZX79-C39	4835	130	37911
3539	18k,5%,1/2W,MF	4835	110	57187	6445	Diode BYD33M	4835	130	37012
3540	4.7k,Potentiometer EVND8AB	4835	103	17004	6449	Diode BYD33D	4835	130	37009
3541	47 ohm,2W,Metal Oxide	4835	116	67238	6451	Diode 1N4148	4835	130	37048
3542	4.7M,5%,1/2W,MF (19" & 20" Latam)	4835	116	57009	6454	Diode BYD33D	4835	130	37009
3543	68 ohm,5%,1W,Metal Oxide	4835	116	67255	6455	Diode BYD33J	4835	130	37094
S 3545	2.2 ohm, 5%,1/2W,MF	4835	116	57653	6456	Diode BYD33J	4835	130	37094
S 3546	4.7 ohm,1/2W,MF	4835	116	57009	6461	Diode 1N4148	4835	130	37048
3552	3.3k,1/10W,MF	4835	111	27039	6464	Diode 1N4148	4835	130	37048
3554	1.5k,1/10W,MF	4835	111	27038	6468	Diode BYD33D	4835	130	37009
S 3555	68 ohm,3W,Metal Oxide	4835	116	67245	6470	Diode BYD33J	4835	130	37094
3565	10k,1/10W,MF	4835	111	37216	6480	Zener Diode BZX79-C10	4835	130	37014
3570	10 ohm,1/10W,MF	4835	111	37363	6481	Diode BYD33D	4835	130	37009
3595	22k,1/10W,MF (Not Used In 13")	4835	111	37441	6502	Diode 1N5062	4822	130	41275
3596	1.0k,5%,1/10W,MF (Not Used In 13")	4822	051	10102	6503	Diode 1N5062	4822	130	41275
3601	8.2k 1/8W,Resistor Pack	4835	111	97047	6504	Diode 1N5062	4822	130	41275
3602	2.2k,1/8W,Resistor Pack	4835	111	97049	6505	Diode 1N5062	4822	130	41275
3603	8.2k,1/8W,Resistor Pack	4835	111	97048	6507	Diode 1N5062	4822	130	41275
3604	10k,5%,1/10W	4835	111	37216	6508	Diode 1N5062	4822	130	41275
3605	10k,5%,1/10W	4835	111	37216	6510	Zener Diode BZX79-C20	4835	130	37282
3606	10k,5%,1/10W	4835	111	37216	6537	Diode BAV21	4822	130	30842
3607	8.2k,1/10W,MF	4835	111	37448	6540	Diode BAV21	4822	130	30842
3608	100k,1/2W,MF	4835	116	57687	6550	Diode	4835	130	37773
3616	0 ohm,MF	4835	111	27056	6560	Diode BYV27-200	4835	130	37463
3617	12k,1/2W,MF	4835	116	57692	6570	Diode BYV27-200	4835	130	37463
3618	15k,1/2W,MF	4835	116	57698	6610	Zener Diode BZX79-C33	4835	130	37904
3621	100 ohm,1/10W,MF	4835	111	37432	6651	Zener Diode Diode,BZX79-F9V1	0053	023	90274
3622	100 ohm,1/10W,MF	4835	111	37432	6653	Zener Diode BZX79-C8V2	4835	130	37503
3623	10k,1/10W,MF	4835	111	37216	6663	LED LTL-307P	4835	130	97096
3624	100 ohm,1/10W,MF	4835	111	37432	7105	Transistor BC547B (13&19" Mono)	4835	130	47055
3625	100 ohm,1/10W,MF	4835	111	37432	7106	IC TDA7052B/N1 (13&19" Mono)	4835	209	88542
3630	6.8k,1/2W,MF (13&19"Mono)	4835	116	57736	7113	Transistor BC847B (19" w/Chld Lck)	4822	130	60511
3630	3.3k,5%,1/2W,MF (All Stereo Models)	4835	116	57714	7114	Transistor BC847B 19" w/Chld Lck)	4822	130	60511
3632	1.0k,5%,1/10W,MF(19" w/A48KRD89X & ASD039/040)	4835	116	57685	7117	Transistor BC847B (19" w/Chld Lck)	4822	130	60511
3634	4.6k,1/2W,MF	4835	116	57724	7118	Transistor BC847B (19" w/Chld Lck)	4822	130	60511
3636	1.0k,5%,1/10W,MF(19" w/A48KRD89X&ASD039/040)	4835	116	57685	7200	Transistor BC847B	4822	130	60511
3637	2.2k,5%,1/2W,MF	4835	110	47006	7204	Transistor BC847B	4822	130	60511
3640	10k,1/10W,MF (Stereo Models)	4835	111	37216	7214	Transistor BC847B	4822	130	60511
3641	10k,1/10W,MF (Stereo Models)	4835	111	37216	7215	Transistor BC847B	4822	130	60511
3642	10k,1/2W,MF	4835	116	57686	7220	Transistor BC847B	4822	130	60511
3650	1k,1/2W,MF	4835	116	57685	7225	TDA8373C/N3	4835	209	88544
3653	1 ohm,1/10W,MF	4835	116	57779	7265	Transistor BC85	5322	130	60508
3654	8.2k,1/2W,MF	4835	116	57742	7401	IC TDA9302H	4835	209	88531
3655	100 ohm,1/2W,MF	4835	116	57684	7420	Transistor BC85	5322	130	60508
3656	470 ohm,1/2W,MF	4835	116	57723	7440	Transistor BC847B	4822	130	60511
3657	100 ohm,1/2W,MF	4835	116	57684	7441	Transistor BC368	4835	130	47382
3659	665 ohm,1/6W,MF (20" Latam)	4835	116	57777	7445	Transistor BUT11AX	4835	130	48117
3659	470 ohm,2/3W,MF (Not Used In 20" Latam)	4835	116	57681	7480	Transistor BC368	4835	130	47382
3662	1.0k,5%,1/10W,MF	4835	116	57685	7518	TP6NA60FI	4835	130	48109
3663	680 ohm,1/10W,MF	4835	111	37271	S 7520	IC MC44603A	4835	209	88537
3664	100 ohm,5%,1/2W,MF	4835	116	57684	7541	IC TDA8139	4835	209	88538
3665	1k,5%,1/10W	4822	051	10102	7590	Transistor BC85 (Not Used In 13")	5322	130	60508
3666	27k,1/10W,MF	4835	111	37442	7600	IC P83C569/016S1,(W/ChildLock,All Mono, 13"&Latam)	4835	209	88571
3667	4.6k,1/10W,MF (Not Used In 19" & 20"Latam)	4835	111	27052	7600	IC P83C569/013S1(19" w/A48KRD89X&ASD039/040)	4835	209	88572
3667	6.8k,5%,1/10W (19&20"Latam)	4835	111	37272	7603	Transistor BC847B,Reset Buffer	4822	130	60511
3668	1k,5%,1/10W	4822	051	10102	7608	Transistor BC847B,13V Monitor	4822	130	60511
3670	100 ohm,1/2W,MF	4835	116	57684	7620	IC ST24W04B1,Memory	4835	209	88532
3671	3.3k,1/2W,MF	4835	116	57714	7650	Transistor BC847B	4822	130	60511
3673	430 ohm,2/3W,MF (13"&20" Models)	4835	116	57679	7663	Transistor BC85	5322	130	60508
3673	390 ohm,1%,2/3W,MF (Not Used In 13" & 20")	4835	116	57775	7681	Transistor BC847B,Vertical Buffer	4822	130	60511
3674	4.6k,1/2W,MF	4835	116	57724	7682	Transistor BC847B,Horizontal	4822	130	60511
3675	4.6k,1/2W,MF	4835	116	57724	7683	Transistor BC85,5.5V Switch	5322	130	60508
3676	6.8k,1/10W,MF	4835	111	37272	7684	Transistor BC847B,5.5V Switch	4822	130	60511
3681	10k,1/10W,MF	4835	111	37216	5010	Peaking Coil,0.68uH	4835	157	67058
3682	47 ohm,5%,1/2W	4835	116	57727	5101	Peaking Coil,22uH	4835	157	67076
3684	10k,1/2W,MF	4835	116	57686	5201	Peaking Coil,100uH	4835	157	67071
3685	68k,1/2W,MF	4835	116	57737	5203	Peaking Coil,22uH	4835	157	67069
3686	33k,1/2W,MF	4835	116	57715	5206	Peaking Coil,8.2uH	4835	157	67073
3688	4.6k,1/10W,MF	4835	111	27052	5260	Peaking Coil	4835	157	67082
3689	4.6k,1/10W,MF	4835	111	27052	5441	Linearity Correction(All 20" Models)	4835	116	67261
3690	1.8k,1/2W,MF	4835	116	57702	5442	Peaking Coil,4.7uH	4835	157	67065
3694	820 ohm,1/2W,MF	4835	116	57732	S 5445	Flyback Transformer(only in 20v)	4835	140	67175
3695	820 ohm,1/2W,MF	4835	116	57732	S 5446	Flyback Transformer(only in 13v and 19v	4835	140	67167
3696	820 ohm,1/2W,MF	4835	116	57732	5451	Peaking Coil,33uH	4835	157	67055
6105	Diode 1N4148 (19" Mono w/A48KRD89X&13" Mono)	4835	130	37048	5456	Peaking Coil,33uH	4835	157	67083
6106	Diode 1N4148(19" Mono w/A48KRD89X & 13" Mono)	4835	130	37048	5457	Peaking Coil,33uH	4835	157	67083
6109	Znr BZX79-C8V2(13,19" w/ChldLk,w/ASD039,All Latam)	4835	130	37503	5458	Peaking Coil,33uH	4835	157	67083
6132	Zener Diode BZX79-C2V7	4835	130	37909	5500	Line Filter	4835	152	17011
6265	Diode 1N4148 (w/A48KRD89X CRT,All 13"&Latam)	4835	130	37048	5516	120 ohm,100MHz,Coil	4835	157	67078
6420	Diode 1N4148	4835	130	37048	5517	120 ohm,100MHz,Coil	4835	157	67078
6421	Diode 1N4148	4835	130	37048	5518	120 ohm,100MHz,Coil	4835	157	67078
6440	Diode BYD33D	4835	130	37009	5519	120 ohm,100MHz,Coil	4835	157	67078
6441	Diode EPG20D	4835	130	80931	5540	Peaking Coil,4.7uH	4835	157	67057
					5541	Line Correction Coil (20")	4835	150	57085
					S 5545	Transformer (13")	4835	140	67172
					S 5545	Transformer (19")	4835	140	67173
					S 5545	Transformer (20")	4835	140	67175
					5550	120 ohm,100MHz,Coil	4835	157	67078
					5551	Peaking Coil,27uH	4835	157	67052

S = Safety Part Be sure to use exact replacement part.

5552	Peaking Coil 62uH.	4835 157 67085	3327	1.5k,1/2W,1.5k,Carbon.	4835 110 47034
5553	Peaking Coil,10uH.	4835 157 67068	3331	1.0K,5%,1/10W,MF	4822 051 10102
5554	Peaking Coil 62uH.	4835 157 67085	3332	390 ohm,1/10W,MF	4835 111 37253
5570	120 ohm,100MHz,Coil (Latam).	4835 157 67078	3333	39 ohm,5%,1/10W,MF	3198 021 53990
5571	Peaking Coil,10uH.	4835 157 67068	S 3334	18k,5%,3W,Metal Oxide.	4835 116 67285
5572	120 ohm,100MHz,Coil (Not Used In Latam)	4835 157 67078	S 3335	330 ohm,1/2W,MF.	4835 116 57671
5573	120 ohm,100MHz,Coil.	4835 157 67078	S 3336	220 ohm,1/2W,MF.	4835 116 57669
5601	Peaking Coil,6.8uH	4835 157 67066	3337	1.5k,1/2W,Carbon	4835 110 47034
5603	Peaking Coil,8.2uH	4835 157 67073	3338	100 ohm,5%,1/10W	4835 111 37432
5604	Peaking Coil,6.8uH	4835 157 67066	3339	100 ohm,5%,1/10W	4835 111 37432
5620	Peaking Coil,6.8uH	4835 157 67072	3340	100 ohm,5%,1/10W	4835 111 37432
0020	Headphone Jack (All w/Headphone Jack). .	4835 265 97468	S 3341	10 ohm, 5%,1/2W,MF	4835 116 57097
133	Bimos Shield	3135 011 00630	3342	220k,1/2W,MF	4835 116 57018
136	9703 Spring.	3135 011 00700	3347	1k,1/3W,MF	4835 116 57663
137	9703 Spring.	3135 011 01030	S 3371	1 ohm,1/3W,MF(Not Used In 20" Latam)	4822 111 30483
143	heaksink f/sops.	3135 011 00670	S 3371	3.3 ohm,5%,1/3W (20" Latam).	4835 116 57776
144	9703 Spring.	3135 011 01030	S 3372	3.3 ohm,5%,1/3W (20" Latam).	4835 116 57776
145	Shield f/Microprocessor.	3135 011 00640	S 3372	1 ohm,1/3W,MF(Not Used In 20" Latam)	4822 111 30483
150	9703 Heatsink.	3135 011 00680	S 3374	1.5k,1/2W,Carbon	4835 110 47034
151	LED Holder	3135 014 01300	6311	Diode BAV21.	4822 130 30842
168	Heatsink,Diode	3135 011 01480	6321	Diode BAV21.	4822 130 30842
170	Peaking Coil	4835 157 67079	6331	Diode 1N4148	4835 130 37048
176	9703 Heatsink.	3135 011 01440	6332	Diode BAV21.	4822 130 30842
177	IC, Spring.	3135 011 00710	6341	Diode 1N4148	4835 130 37048
205	9703 Shield.	3135 011 01420	6347	Zener Diode BZX79-C8V2	4835 130 37503
206	9703 Shield.	3135 011 01430	7301	Transistor BF422,Red Driver.	4822 130 41782
1000	Tuner.	4835 210 47096	7302	Transistor BF422,Green Driver.	4822 130 41782
1015	Saw Filter	4835 153 97022	7303	Transistor BF422,Blue Driver	4822 130 41782
1060	Switch	4835 280 47042	7304	Transistor BF423,Red Output.	4835 130 47004
1061	Switch	4835 280 47042	7305	Transistor BF422,Red Output.	4822 130 41782
1062	Switch	4835 280 47042	7306	Transistor BF423,Green Output.	4835 130 47004
1063	Switch	4835 280 47042	7307	Transistor BF422,Green Output.	4822 130 41782
1064	Switch (Not Used In 19" & 20"Latam). . .	4835 280 47042	7308	Transistor BF423,Blue Output	4835 130 47004
S 1080	12V Relay (Not Used In 13" & Latam). . .	4835 280 47043	7309	Transistor BF422,Blue Output	4822 130 41782
1104	Ceramic Filter	4835 152 17013	5370	Peaking Coil,1 ohm (w/A48KRD89X or A48A	
1207	Ceramic Filter 4M5TPSMB B.	4835 154 17001		FN36X)	4835 157 67061
1277	Crystal.	4835 242 77276	5370	Peaking Coil,10 ohm(13")	4835 157 67068
S 1500	1 Amp Fuse (Not Used In Latam)	4835 253 97162	5370	Peaking Coil (Models w/A48JLL40X46 or A	
S 1500	2 Amp Fuse (Not Used In Latam AMV Model			48KZL70X).	4835 157 67087
	s).	4835 253 97163	5370	Peaking Coil 33uH (20").	4835 157 58205
S 1500	4 Amp Fuse (Used In Latam AMV Models). .	4835 253 97165	L5	9 Pin CRT Socket (Not Used In w/A48KRD8	
S 1571	1 Amp Fuse	4835 253 97162		9X).	4835 265 97464
S 1572	1 Amp Fuse	4835 253 97162	L6	9 Pin CRT Socket (w/A48KRD89X)	4835 265 97464
1670	IR Receiver GP1U28QP	4835 219 47286			
1681	Crystal 12M.	4835 122 97106			
3505	Surge Protect.	4835 116 97013			
L4	1 Pin Board Connector(W/A48KRD89X,13" &				
	Latam)	3135 010 00470			
M2A	1 Pin Bd Cn(W/A48KRD89X,13"&Latam Excep				
	t w/EMA822).	3135 010 00470			
M2A4	1 Pin Board Connector(EMA822).	3135 010 00470			
M2B	1 Pin Bd Cn(W/A48KRD89X,13"&Latam Excep				
	t w/EMA822).	3135 010 00470			
M2B4	1 Pin Board Connector (EMA822)	3135 010 00470			
M4	2 Pin Board Connector.	2422 025 12667			
M5	1 Pin Board Connector.	3135 010 00470			
M7	5 Pin Connector.	0046 246 60001			
M8	4 Pin Bd Cn(W/A48KRD89X CRT,All13" & La				
	tam Models).	2422 025 14671			
M10	2 Pin Board Connector (13"w/Chld Lck). .	2422 025 14668			
M20	1 Pin Board Connector (19"w/Chld Lck). .	2422 026 04803			
M23	4 Pin Board Connector (19"w/Chld Lck). .	2422 026 04804			
M30	4 Pin Board Connector(w/Headphones). . .	2422 025 14672			
M31	3 Pin Cinch Connector (Models w/ASD039,				
	All Latam)	2422 026 04699			
M32	2 Pin Board Connector (All 13" w/Chld L				
	ck).	2422 026 04619			
M40	4 Pin Board Connector (13" w/Chld Lck) . .	2422 025 14672			
M41	2 Pin Board Connector (13" w/oChld Lck &				
	19" Mono).	2422 025 14668			
SK1	Main Power Switch(W/Main Switch)	4835 148 27052			
APT189 CRT MODULE					
2313	330pF,50V,Ceramic.	4835 122 87287			
2323	330pF,50V,Ceramic.	4835 122 87287			
2333	330pF,50V,Ceramic.	4835 122 87287			
2341	0.1uF,250V,Polyester	4835 121 47278			
2342	22uF,250V,Electrolytic	4835 124 47021			
S 2373	0.033uF,630V,Polyester	4835 121 47605			
3311	1k,1/2W,MF	4835 116 57685			
3312	390 ohm,1/10W,MF	4835 111 37253			
3313	39 ohm,5%,1/10W,MF	3198 021 53990			
S 3314	18k,5%,3W,Metal Oxide.	4835 116 67285			
S 3315	330 ohm,1/2W,MF.	4835 116 57671			
S 3316	220 ohm,1/2W,MF.	4835 116 57669			
3317	1.5k,1/2W,Carbon	4835 110 47034			
3321	1.0K,5%,1/10W ,MF.	4822 051 10102			
3322	390 ohm,1/10W,MF	4835 111 37253			
3323	39 ohm,5%,1/10W,MF	3198 021 53990			
S 3324	18k,5%,3W,Metal Oxide.	4835 116 67285			
S 3325	330 ohm,1/2W,MF.	4835 116 57671			
S 3326	220 ohm,1/2W,MF.	4835 116 57669			
ASD039/040 LEAD (NON DBX) STEREO MODULE					
C700	100uF,16V,Electrolytic	4835 124 47706			
C701	4700pF,50V,Ceramic	4835 122 87415			
C702	0.22uF,50V,Ceramic	4835 122 87087			
C703	1.0uF 50V,Electrolytic	4835 121 47406			
C704	47uF,16V,Electrolytic.	4835 124 47567			
C705	10uF,50V,Electrolytic.	4835 124 47499			
C706	0.022uF,50V,Ceramic.	4835 122 87538			
C707	1.0uF,50V,Electrolytic	4835 121 47406			
C708	0.1uF,50V,Ceramic.	4835 122 87375			
C709	1.0uF,50V,Electrolytic	4835 121 47406			
C710	1000pF,50V,Ceramic	4835 122 87023			
C711	2700pF,50V,Ceramic	4835 122 87502			
C712	0.1uF,50V,Ceramic.	4835 122 87375			
C713	10uF,50V,Electrolytic.	4835 124 47499			
C714	2.2uF,50V,Electrolytic	4835 124 47502			
C715	10uF,50V,Electrolytic.	4835 124 47499			
C716	10uF,50V,Electrolytic.	4835 124 47499			
C717	10uF,16V,Electrolytic.	4835 124 47716			
C718	100pF,50V,Ceramic (ASD039 only).	4835 122 87012			
C719	100pF,50V,Ceramic (ASD039 only).	4835 122 87012			
C720	1000pF,50V,Ceramic (ASD039 only).	4835 122 87023			
C721	1000pF,50V,Ceramic (ASD039 only).	4835 122 87023			
C722	10uF,50V,Electrolytic(ASD039 only). . . .	4835 124 47499			
C723	10uF,50V,Electrolytic(ASD039 only). . . .	4835 124 47499			
C724	10uF,16V,Electrolytic.	4835 124 47716			
C726	10pF,50V,Ceramic (ASD039 only)	4835 122 87412			
C727	10pF,50V,Ceramic (ASD039 only)	4835 122 87412			
C728	1000pF,50V,Ceramic (ASD039 only)	4835 122 87023			
C729	1000pF,50V,Ceramic (ASD039 only)	4835 122 87023			
C730	47uF,16V,20% Electrolytic(ASD039 only)	4835 124 47722			
C731	1000pF,50V,Ceramic (ASD039 only)	4835 122 87023			
C732	47uF,16V,Electrolytic(ASD039 only)	4835 124 47567			
C733	47uF,16V,Electrolytic(ASD039 only)	4835 124 47567			
C734	100uF,16V,Electrolytic(ASD039 only). . . .	4835 124 47706			
C735	47uF,16V,Electrolytic(ASD039 only). . . .	4835 124 47567			
C736	0.22uF,50V,Ceramic (ASD039 only)	4835 122 87087			
C737	0.22uF,50V,Ceramic (ASD039 only)	4835 122 87087			
C738	10uF,50V,Electrolytic(ASD039 only)	4835 124 47499			
C739	10uF,50V,Electrolytic(ASD039 only)	4835 124 47499			
C740	47uF,16V,Electrolytic(ASD039 only)	4835 124 47567			
C741	1000pF,50V,Ceramic (ASD039 only)	4835 122 87023			
C742	2700pF,50V,Ceramic	4835 122 87596			
C743	2700pF,50V,Ceramic	4835 122 87596			
C744	C 0.47uF,63V,.	4822 121 42008			
C745	C0.47uF,63V,	4822 121 42008			
C746	CC 2200pF,25V,	4822 126 12147			
C747	CC 2200pF,25V,	4822 126 12147			

C748	0.22uF,50V,Ceramic	4835	122	87087	IC710	IC HEF4053BP,2-Channel MultiDeplexer (A	4835	209	17033
C749	0.22uF,50V,Ceramic	4835	122	87087		SD039 only).	4835	209	88534
C750	2200pF,50V,Ceramic	4835	122	87544	IC720	IC TA7668BP,AVL Controller(ASD039 only)	4835	209	13706
C751	2200pF,50V,Ceramic	4835	122	87544	IC730	IC TDA7053A/N2,1 Watt Amp.	4822	209	60508
C752	10uF,16V,Electrolytic(ASD039 only)	4835	124	47716	Q701	Transistor BC857B.	4822	130	60511
C753	10uF,50V,Electrolytic(ASD039 only)	4835	124	47499	Q702	Transistor BC847B.	4822	130	60511
C754	2200pF,50V,Ceramic	4835	122	87544	Q703	Transistor BC857B.	4822	130	60511
C755	2200pF,50V,Ceramic	4835	122	87544	Q704	Transistor BC847B(ASD039 only)	4822	130	60511
C760	220uF,25V,Electrolytic	4835	124	47557	Q720	Transistor BC847B(ASD039 only)	4822	130	60511
C762	0.1uF,50V,Ceramic.	4835	122	87375	Q730	Transistor BC847B.	4822	130	60511
C763	22uF,50V,Electrolytic.	4835	124	47503	Q731	Transistor BC847B.	4822	130	60511
C764	10uF,50V,Electrolytic.	4835	124	47499	Q732	Transistor BC847B.	4822	130	60511
S R700	10 ohm,1/3W,MF	4822	111	30508	Q733	Transistor BC847B.	4822	130	60511
R701	5.6k,1/10W,MF	4835	111	37376	Z760	Zener Diode BZX79-C2V7	4835	130	37909
R702	3.3k,1/10W,MF	4835	111	37247	C1	9703 4 Pin Connector	2422	025	14671
R703	15k 1/10W,MF	4835	111	37458	C2	9703 9 Pin Connector	2422	025	15098
R704	1.5k,1/10W,MF	4835	111	37437	C3	9703 9 Pin Connector	2422	025	15098
R705	13k,5%,1/10W,MF	4835	111	27059	C3A	9703 10 Pin Connector.	2422	025	15099
R706	10k,1/2W,MF	4835	116	57686	H730	9703 Heatsink.	3135	011	01410
R707	10k,1/10W,MF	4835	111	37216	B11	9703 Buss Wire	0322	179	00003
R708	1.0k,5%,1/10W,MF	4822	051	10102	BR1	0 ohm,MF	3198	021	90010
R709	1.0k,5%,1/10W,MF	4822	051	10102	BR2	0 ohm,MF	4835	111	27056
R712	22k,1/2W,MF(ASD039 only)	4835	116	57706	BR4	0 ohm,MF	4835	111	27056
R713	10k,1/2W,MF(ASD039 only)	4835	116	57686	B700	9703 Buss Wire (ASD040 only)	0322	179	00003
R714	100 ohm,1/2W,MF	4835	116	57684	B740	9703 Buss Wire	0322	179	00003
R715	100 ohm,1/2W,MF	4835	116	57684					
R716	10k,1/2W,MF(ASD039 only)	4835	116	57686					
R717	10k,1/2W,MF(ASD039 only)	4835	116	57686					
R718	100 ohm,1/2W,MF(ASD039 only)	4835	116	57684					
R719	100 ohm,1/2W,MF(ASD039 only)	4835	116	57684					
R720	1.0k,5%,1/10W,MF	4822	051	10102					
R721	1.2k,1/10W,MF	4835	111	27042					
R722	820 ohm,1/2W,MF	4835	116	57741					
R723	470 ohm,1/2W,MF	4835	116	57723					
R724	1k,1/2W,MF	4835	116	57685					
R725	100k,1/2W,MF(ASD039 only)	4835	116	57687					
R726	100k,1/2W,MF(ASD039 only)	4835	116	57687					
R727	100k,1/2W,MF(ASD039 only)	4835	116	57687					
R728	100k,1/2W,MF(ASD039 only)	4835	116	57687					
R729	100k,1/2W,MF(ASD039 only)	4835	116	57687					
R730	1 ohm,5% 1/3W,MF(ASD039 only)	2322	205	33108					
R731	470k,1/10W,MF (ASD039 only)	4835	111	37407					
R732	470k,1/10W,MF (ASD039 only)	4835	111	37407					
R733	1.0k,5%,1/10W,MF (ASD039 only)	4822	051	10102					
R734	1.0k,5%,1/10W,MF (ASD039 only)	4822	051	10102					
R735	3.3k,1/10W,MF (ASD039 only)	4835	111	37247					
R736	3.3k,1/10W,MF (ASD039 only)	4835	111	37247					
R737	100 ohm,1/10W,MF (ASD039 only)	4835	111	37432					
R738	100 ohm,1/10W,MF (ASD039 only)	4835	111	37432					
R739	22k,1/2W,MF (ASD039 only)	4835	116	57706					
S R740	10 ohm,1/3W,MF(ASD039 only)	4822	111	30508					
R741	2.2k,1/10W,MF (ASD039 only)	4835	111	27047					
R743	6K8,1/2W,MF	4835	116	57736					
R744	100 ohm,1/10W,MF	4835	111	37432					
R745	100 ohm,1/10W,MF	4835	111	37432					
R746	1.8k,1/10W,MF	4835	111	37231					
R747	1.8k,1/10W,MF	4835	111	37231					
R748	3.3k,1/10W,MF	4835	111	37247					
R749	3.3k,1/10W,MF	4835	111	37247					
R750	1.8k,1/10W,MF	4835	111	37231					
R751	1.8k,1/10W,MF	4835	111	37231					
R752	470k,1/10W,MF	4835	111	37407					
R753	470k,1/10W,MF	4835	111	37407					
R754	3.3k,1/10W,MF	4835	111	37247					
R755	3.3k,1/2W,MF	4835	116	57714					
R756	470k,1/10W,MF	4835	111	37407					
R757	470k,1/10W,MF	4835	111	37407					
R758	22k,1/2W,MF	4835	116	57706					
R759	22k,1/2W,MF	4835	116	57706					
R760	22k,1/2W,MF	4835	116	57706					
R761	22k,1/2W,MF	4835	116	57706					
R762	51k,5%,1/10W,MF (ASD039 only)	4835	111	27057					
R763	51k,5%,1/10W,MF (ASD039 only)	4835	111	27057					
R764	1.8k,1/10W,MF (ASD039 only)	4835	111	37231					
R765	470 ohm,1/2W,MF	4835	116	57723					
R766	10k,1/10W,MF	4835	111	37216					
R767	5.6k,1/2W,MF	4835	116	57732					
R768	1.2k,1/10W,MF (ASD039 only)	4835	111	27042					
R768	1.5k,1/10W,MF (ASD040 only)	4835	111	37437					
R769	1.2k,1/10W,MF (ASD039 only)	4835	111	27042					
R769	1.5k,1/10W,MF (ASD040 only)	4835	111	37437					
R770	220 ohm,1/2W,MF	4835	116	57705					
R771	220 ohm,1/2W,MF	4835	116	57705					
R772	1.0k,5%,1/10W,MF (ASD039 only)	4822	051	10102					
R773	1.0k,5%,1/10W,MF (ASD039 only)	4822	051	10102					
R774	10k,1/10W,MF	4835	111	37216					
R775	R 1/10W,1K J	4822	051	10102					
R776	R 1/10W,1K J	4822	051	10102					
Y700	Ceramic Resistor	4835	122	97103					
D760	Diode 1N4148	4835	130	37048					
D761	Diode 1N4148	4835	130	37048					
IC700	IC LA7765,Stereo Decoder	4835	209	88533					

ASD042/043 DBX STEREO MODULE

1101	Ceramic Resistor	4835	122	97102
2101	10uF., 50V, Electrolytic	4835	124	47499
2102	0.47uF., 63V, Polyester.	4822	121	42008
2103	4.7uF., 50V, Electrolytic.	4835	124	47506
2104	0.22uF., 63V, Polyester.	4835	121	47603
2105	10uF., 50V, Electrolytic	4835	124	47499
2106	2.2uF., 50V, Electrolytic.	4835	124	47502
2107	2.2uF., 50V, Electrolytic.	4835	124	47502
2108	0.01uF., 50V, Polyester.	4835	121	47593
2109	0.015uF., 50V, Polyester	4835	121	47593
2110	2.2uF., 50V, Electrolytic.	4835	124	47502
2111	8200pF., 50V, Polyester.	4835	121	47585
2112	0.15uF., 63V, Polyester.	4835	121	47599
2113	100uF., 16V, Electrolytic.	4835	124	47706
2114	0.15uF., 63V, Polyester.	4835	121	47599
2115	100uF., 16V, Electrolytic.	4835	124	47706
2116	4.7uF., 50V, Electrolytic.	4835	124	47506
2117	4.7uF., 50V, Electrolytic.	4835	124	47506
2118	0.1uF., 63V, Polyester	4835	121	47602
2119	10uF., 50V, Electrolytic	4835	124	47499
2120	4.7uF., 50V, Electrolytic.	4835	124	47506
2121	0.047uF., 100V, Polyester.	4835	121	47005
2122	1.0uF., 50V, Electrolytic.	4835	121	47406
2123	1.0uF., 50V, Electrolytic.	4835	121	47406
2124	10uF., 50V, Electrolytic	4835	124	47499
2125	10uF., 50V, Electrolytic	4835	124	47499
2126	2.2uF., 50V, Electrolytic.	4835	124	47502
2127	2.2uF., 50V, Electrolytic.	4835	124	47502
2128	4.7uF., 50V, Electrolytic.	4835	124	47506
2129	2.2uF., 50V, Electrolytic.	4835	124	47502
2130	8.2uF., 50V, Polyester	4835	121	47585
2147	220uF., 25V, Electrolytic.	4835	124	47557
2149	0.1uF., 63V, Polyester	4835	121	47602
2151	10uF., 50V, Electrolytic	4835	124	47499
2152	10uF., 50V, Electrolytic	4835	124	47499
2153	0.027uF., 50V, Polyester)	4835	121	47595
2154	0.027uF., 50V, Polyester	4835	121	47595
2155	0.33uF., 63V, Polyester.	4835	121	47223
2156	0.33uF., 63V, Polyester.	4835	121	47223
2157	0.033uF., 50V, Polyester	4835	121	47596
2158	0.033uF., 50V, Polyester	4835	121	47596
2159	0.22uF., 63V, Polyester.	4835	121	47603
2160	0.22uF., 63V, Polyester.	4835	121	47603
2161	2200pF., 50V, Ceramic.	4835	122	47007
2162	2200pF., 50V, Ceramic.	4835	122	47007
2163	22uF., 50V, Electrolytic	4835	124	47503
2164	10uF., 50V, Electrolytic	4835	124	47499
2169	10uF., 16V, Electrolytic	4835	124	47716
2170	10uF., 16V, Electrolytic	4835	124	47716
2171	0.1uF., 63V, Polyester	4835	121	47602
2172	220uF., 25V, Electrolytic.	4835	124	47557
3101	2.2k, 5%, 1/2W, Metal Film	4835	110	57187
3102	18k, 5%, 1/2W, Metal Film.	4835	110	47006
3103	2.2k, 5%, 1/2W, Metal Film	4835	110	57187
3104	18k, 5%, 1/2W, Metal Film.	4835	110	47006
3105	2.2k, 5%, 1/2W, Metal Film	4835	110	47006
3106	8.2k, 1/2W, Metal Film	4835	116	57683
3107	160 ohm, 1/2W, Metal Film.	4835	116	57682
3153	6.8k, 1/2W, Metal Film	4835	116	57736
3154	6.8k, 1/2W, Metal Film	4835	116	57736
3157	3.3k, 1/2W, Metal Film	4835	116	57714
3158	3.3k, 1/2W, Metal Film	4835	116	57714
3159	1.8k, 1/2W, Metal Film	4835	116	57702
3160	1.8k, 1/2W, Metal Film	4835	116	57702
3161	1.8k, 1/2W, Metal Film	4835	116	57702

3162	1.8k, 1/2W, Metal Film	4835	116	57702
3163	470 ohm, 1/2W, Metal Film.	4835	116	57726
3164	470 ohm, 1/2W, Metal Film.	4835	116	57726
3165	22k, 1/2W, Metal Film.	4835	116	57706
3166	22k, 1/2W, Metal Film.	4835	116	57706
3167	22k, 1/2W, Metal Film.	4835	116	57706
3168	22k, 1/2W, Metal Film (.	4835	116	57706
3169	470 ohm, 1/2W, Metal Film.	4835	116	57726
3170	470 ohm, 1/2W, Metal Film.	4835	116	57726
3171	270 ohm, 1/2W, Metal Film.	4835	116	57709
3173	5.6k, 1/2W, Metal Film	4835	116	57732
3179	1.0k, 1/2W, Metal Film	4835	116	57685
3180	1.0k, 1/2W, Metal Film	4835	116	57685
3181	10k, 1/2W, Metal Film.	4835	116	57686
3182	10k, 1/2W, Metal Film.	4835	116	57686
3190	820 ohm, 1/2W, Metal Film	4835	116	57741
3191	820 ohm, 1/2W, Metal Film.	4835	116	57741
3194	220 ohm, 1/2W, Metal Film.	4835	116	57705
3195	220 ohm, 1/2W, Metal Film.	4835	116	57705
6101	Diode 1N4148	4835	130	37048
6102	Zener Diode BZX79, 2.7V.	4835	130	37909
6103	Diode 1N4148	4835	130	37048
7103	IC TDA7057AQ/N2 (ASD042 only).	4835	209	88543
7103A	IC TDA7053A/N2 (ASD043 only)	4822	209	13706
7101	IC TDA9852/V2, Stereo Decoder.	4835	209	88493
7105	Transistor BC547B, Bass Boost.	4835	130	47055
7106	Transistor BC547B, Bass Boost.	4835	130	47055
7107	Transistor BC547B, Treble Boost.	4835	130	47055
7108	Transistor BC547B, Treble Boost.	4835	130	47055
C1	5 Pin Board Connector.	2422	025	14672
C2	9 Pin Board Connector.	2422	025	15098
C3	9 Pin Board Connector.	2422	025	15098
C3A	10 Pin Board Connector	2422	025	15099
H101	9703 Shield.	3135	011	01190
H103	9703 Heatsink (ASD042 only).	3135	011	01130
H103A	9703 Heatsink (ASD043 only).	3135	011	01410
9100	9703 Buss Wire.	0322	179	00003

Service and Quality
Service Publications Dept.
One Philips Drive
P.O. Box 14810
Knoxville, TN 37914

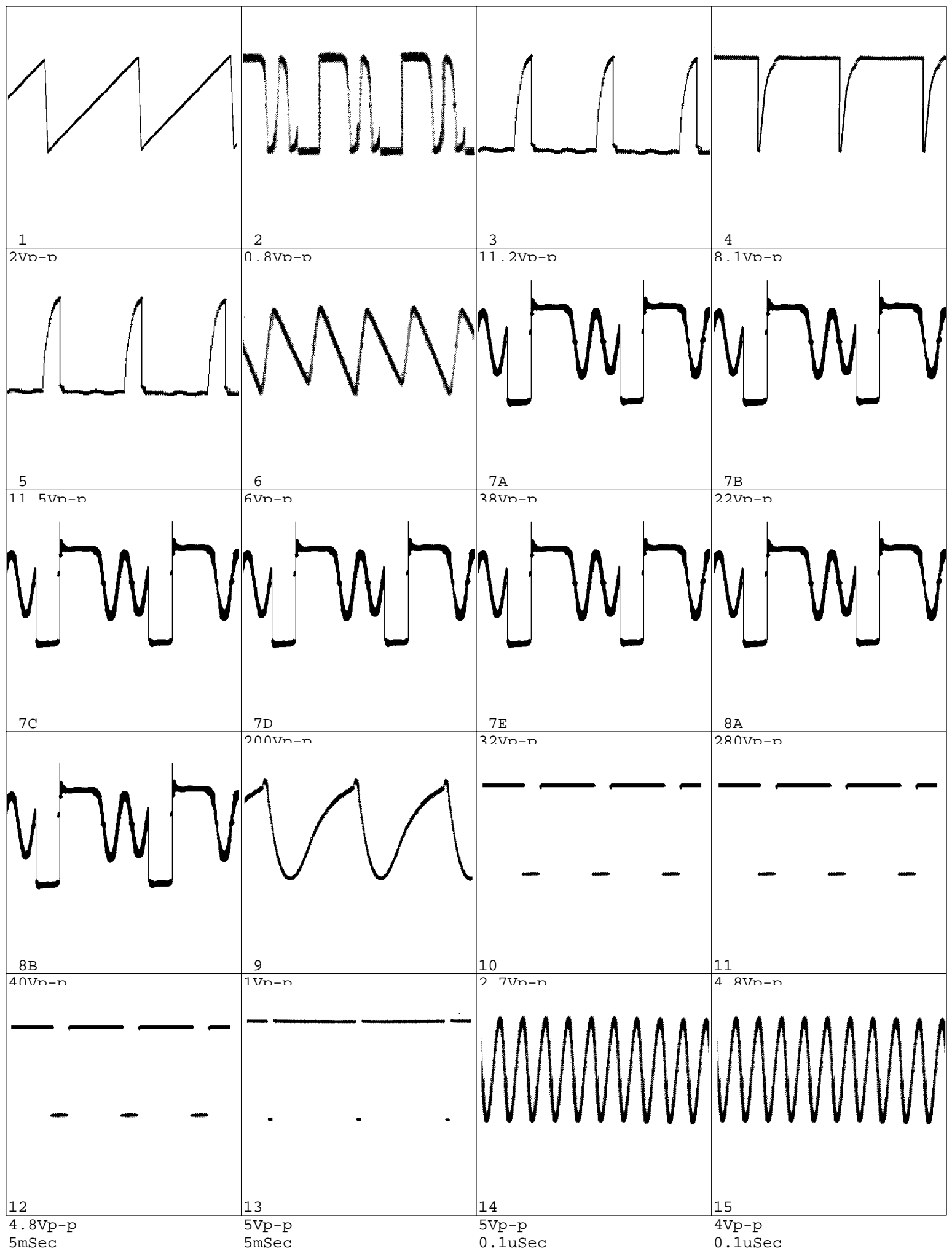
Model no.: 20LW27
First Publish: 8-21-98
Rev. Date: 07-12-2007
Print Date: 12/07/2007

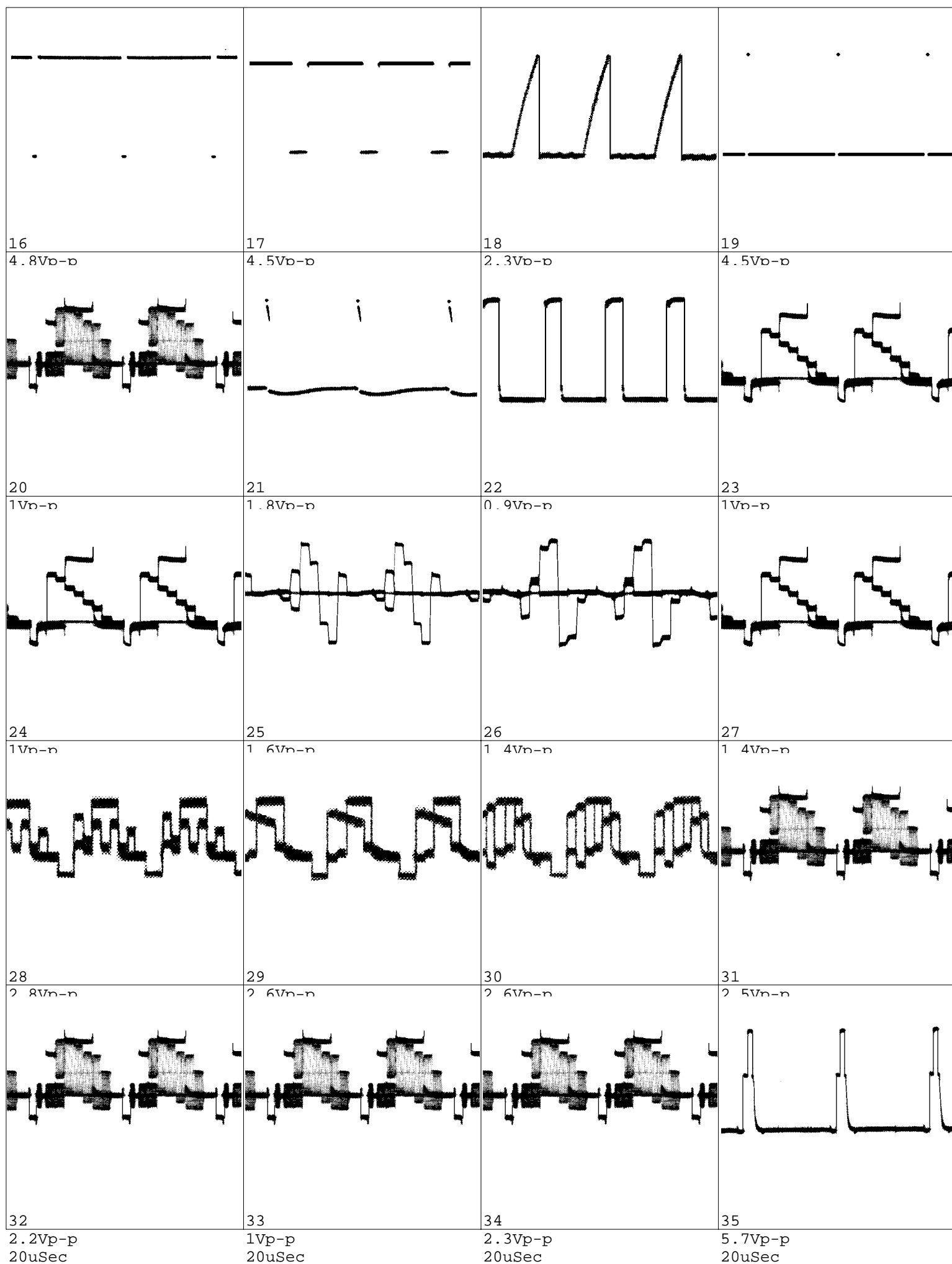
Scope Patterns

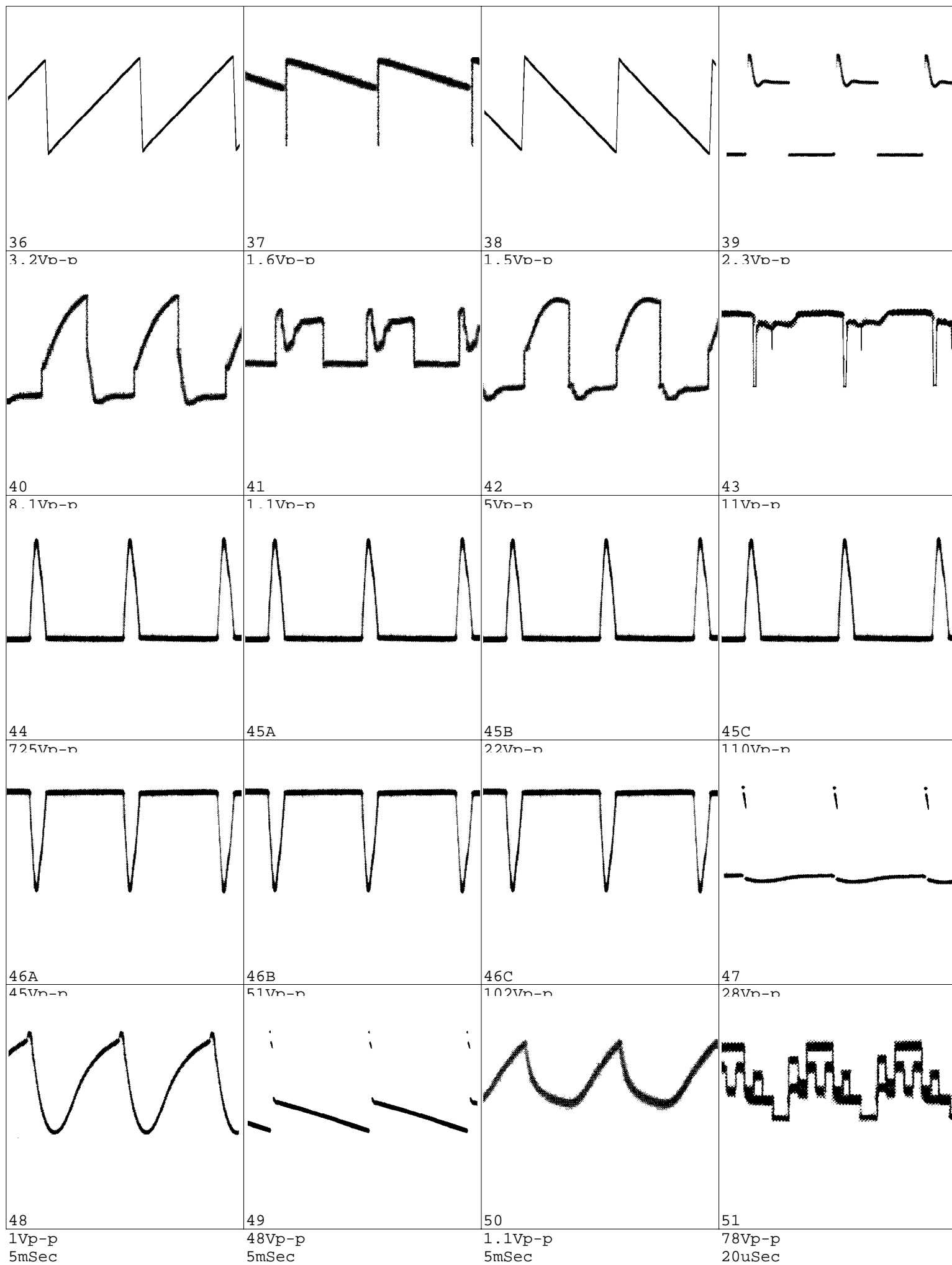
REFER TO SAFETY GUIDELINES

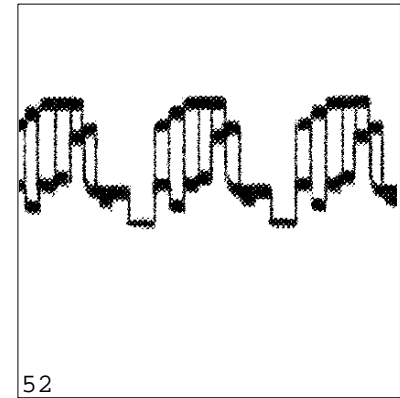
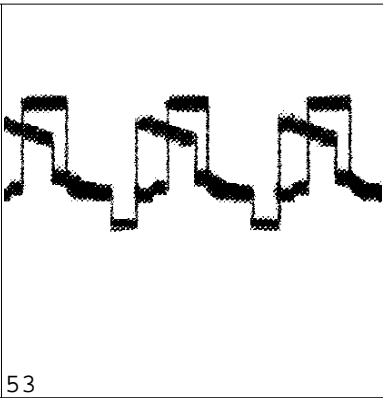
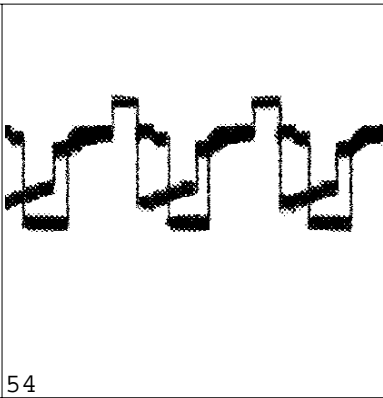
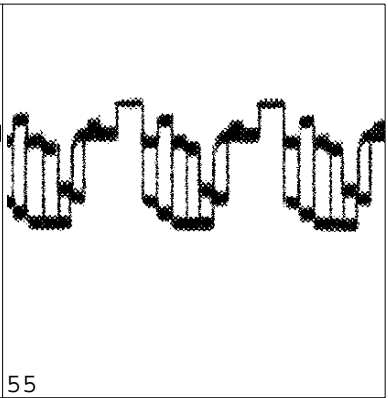
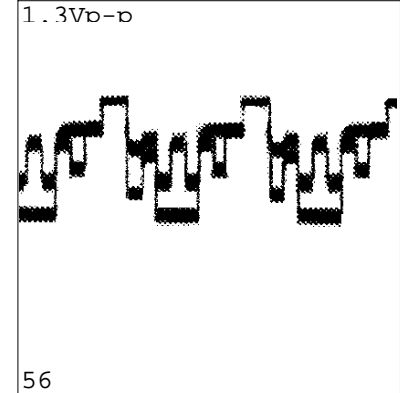
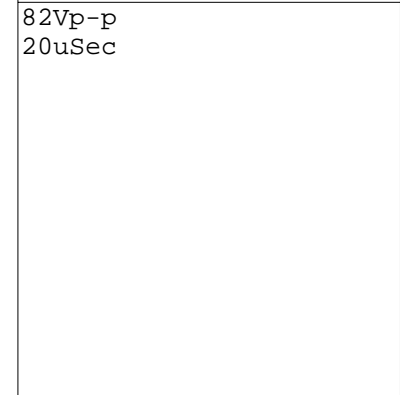
SAFETY NOTICE: ANY PERSON ATTEMPTING TO SERVICE THIS CHASSIS MUST FAMILIARIZE HIMSELF WITH THE CHASSIS AND BE AWARE OF THE NECESSARY SAFETY PRECAUTIONS TO BE USED WHEN SERVICING ELECTRONIC EQUIPMENT CONTAINING HIGH VOLTAGES.

CAUTION: USE A SEPARATE ISOLATION TRANSFORMER FOR THIS UNIT WHEN SERVICING







			
<p>52 1.3Vp-p </p>	<p>53 2.5Vp-p 20uSec</p>	<p>54 80Vp-p 20uSec</p>	<p>55 1.3Vp-p 20uSec</p>
<p>56 82Vp-p 20uSec </p>			

