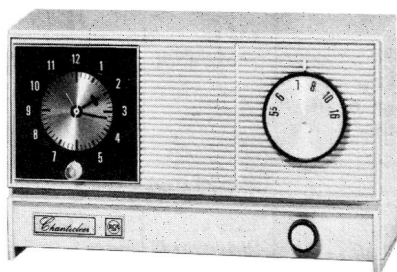




# RCA VICTOR



MODEL CHANTICLEER RC-36

## AM TABLE RADIO RECEIVER

# SERVICE DATA

## MODEL RC-36

### GENERAL INFORMATION

#### ELECTRICAL SPECIFICATIONS

**TUNING RANGE** ..... 540-1620 kc

**INTERMEDIATE FREQUENCY** ..... 455 kc

#### TUBE COMPLEMENT

Symbol	Type	Function
V-1	RCA 12BE6	Converter
V-2	RCA 12BA6	IF Amplifier
V-3	RCA 12AV6	1st Audio/Detector
V-4	RCA 50EH5	Power Output
V-5	RCA 35W4	Rectifier

#### LOUDSPEAKER

Size and Type ..... 4" PM

Voice Coil Impedance ..... 8 ohms

**TUNING DRIVE RATIO** ..... 1.1 (Direct Drive)

## REPLACEMENT PARTS LIST

Insist on Genuine Factory Tested Parts, which are readily identified and may be purchased from Authorized Dealers.

SYMBOL	STOCK NO.	DESCRIPTION	SYMBOL	STOCK NO.	DESCRIPTION
					MISCELLANEOUS
C-1A, B	63-10127	Capacitor Variable Tuning	63-10133		Board-Printed Board-Assembled
C-2	63-10121	Capacitor-Oil Tubular-.02 uf	63-10132		Board-Printed Board-Less Components
C-3, C-6	63-10122	Capacitor-Oil Tubular-.033 uf	*63-10589		Cabinet-with name plate-Blue
C-4	63-10123	Capacitor-Oil Tubular-.02 uf	*63-10587		Cabinet-with name plate-Grey
C-13	63-10124	Capacitor-Oil Tubular-.033 uf	*63-10588		Cabinet-with name plate-Ivory
C-14,			*63-10586		Clamp-Tube Clamp (V-4, V-5)
C-15	63-10125	Capacitor-Electrolytic-40/20/20 uf 150V	63-10134		Connector-AC Connector
L-1	63-10128	Coil-Antenna, Ferrite Rod	*63-10592		Cover-Back Cover
L-2	63-10129	Coil-Oscillator	63-10136		Grommet-Rubber
SP-1	63-10137	Speaker-4" 8 ohm	*88-2768		Instructions-Customer's Instruction Book
T-1, T-2	63-10130	Transformer-1st and 2nd IF	63-10143		Knob-Tuning-with insert
T-3	63-10131	Transformer-Audio Output	63-10144		Knob-Volume-with insert
VR-1	*63-10593	Control-Volume Control	*63-10594		Knob-Timer-On/Off
			*63-10590		Plate-Clock Face, Aluminum
			*63-10584		Socket-Tube (V-1, 2, 3)
			*63-10585		Socket-Tube (V-4, 5)
			*63-10595		Timer-Clock Timer
			*63-10591		Window-Timer Acryl.

\* Indicates New Stock Items.

Only items listed under stock numbers are available as Replacement Parts.

All parts subject to change or withdrawal without notice.

ISSUED BY

SERVICE DIVISION PUBLICATIONS  
RCA VICTOR COMPANY, LTD.  
MONTREAL, CANADA

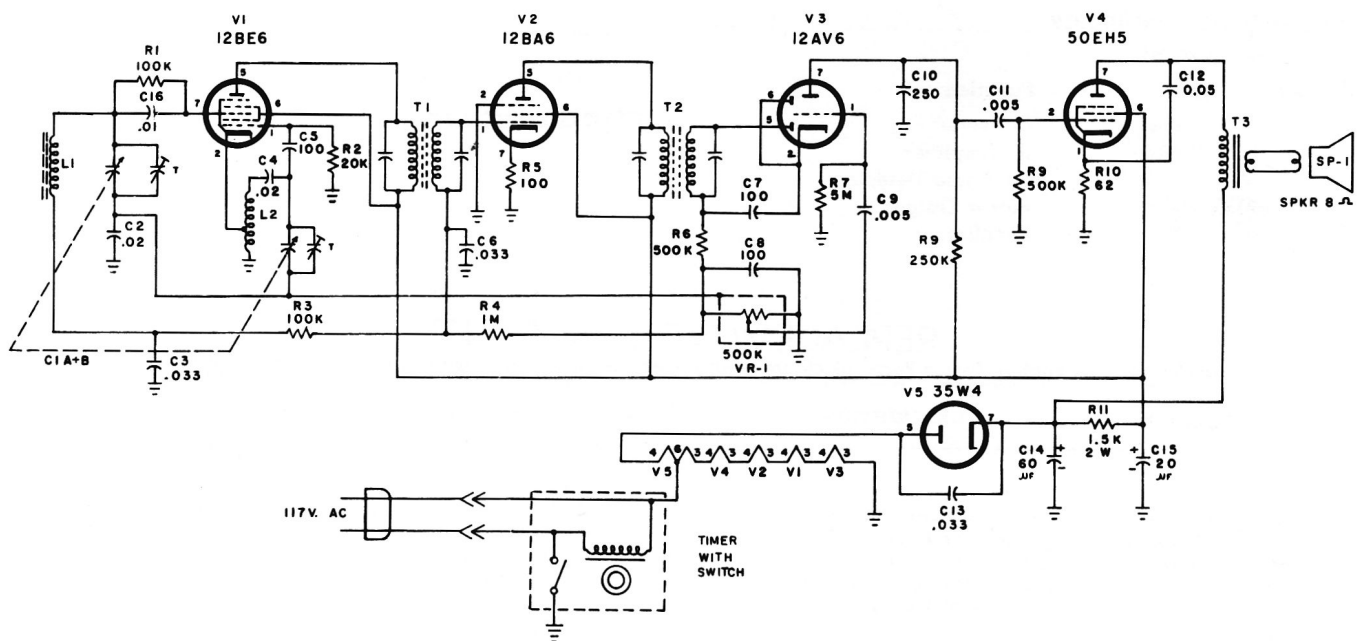
Price 35c

1968 No. 2  
Printed in Canada

## ALIGNMENT PROCEDURE

1. For all alignment operations connect low side of signal generator to common negative.
2. Connect output indicator to voice coil terminals of loudspeaker.
3. Set volume control to maximum.
4. Keep generator output as low as possible to avoid AVC action.

Step	Connect high side of signal gen. to—	Set signal gen. to—	Turn radio dial to—	Adjust—for peak output
1	Pin #1 of V2 through .01 mf capacitor	455 kc (Modulated)	Quite point near 1600 kc	T2 (2nd I-F trans.), top and bottom cores (See note)
2	Pin #7 of V1 through .01 mf capacitor			T1 (1st I-F trans.), top and bottom cores
3	Repeat steps 1 and 2			
4	Short wire placed near antenna to radiate signal	1620 kc (Modulated)	Gang fully open	C1-B-T (ocs. trimmer)
5		1500 kc (Modulated)	1500 kc	C1-A-T (Ant. trimmer)
6		600 kc (Modulated)	600 kc (rock gang)	L-2 (ocs. coil)
7	Repeat steps 3, 4 and 5			



Schematic Diagram