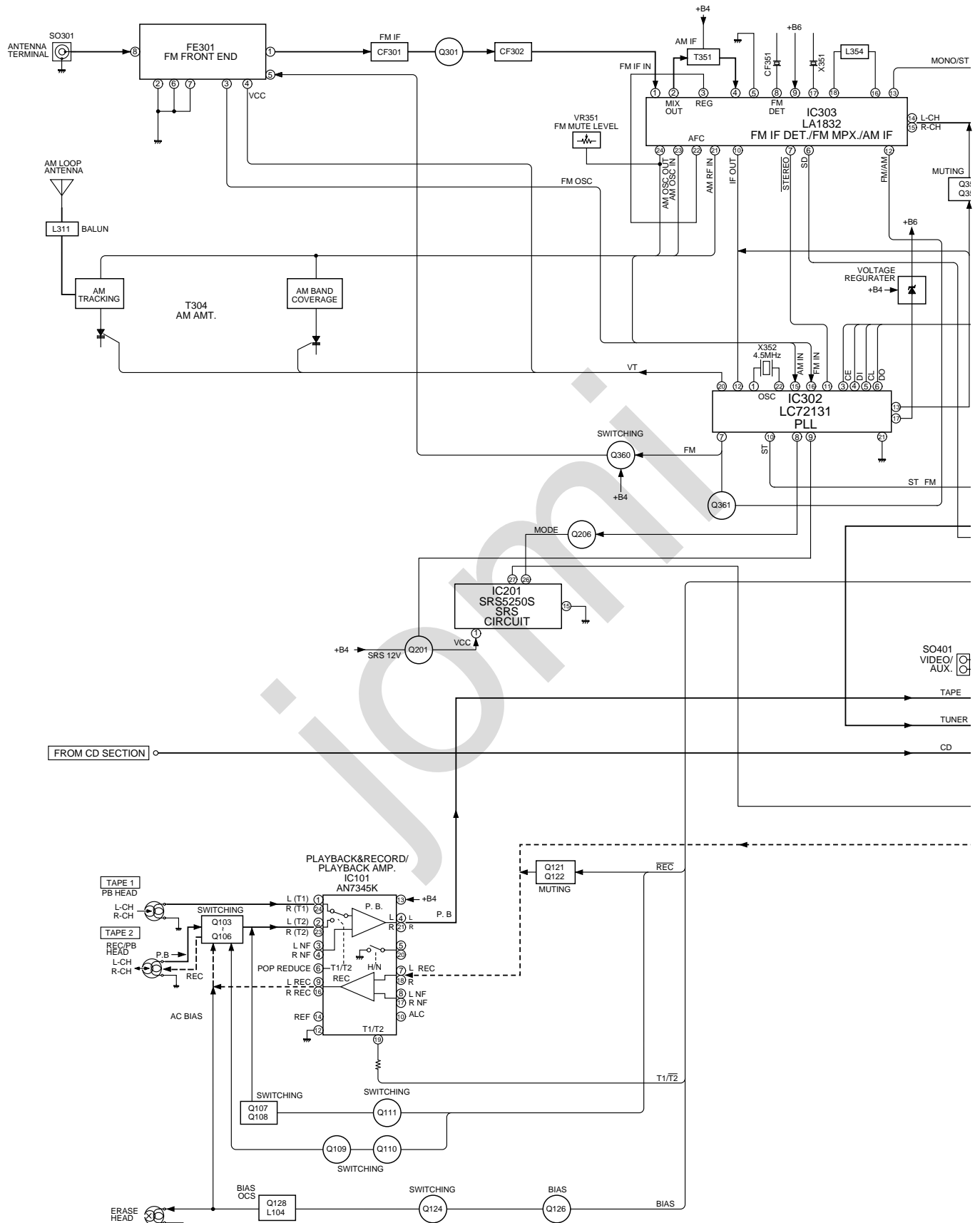


Figure 13 BLOCK DIAGRAM (1/3)



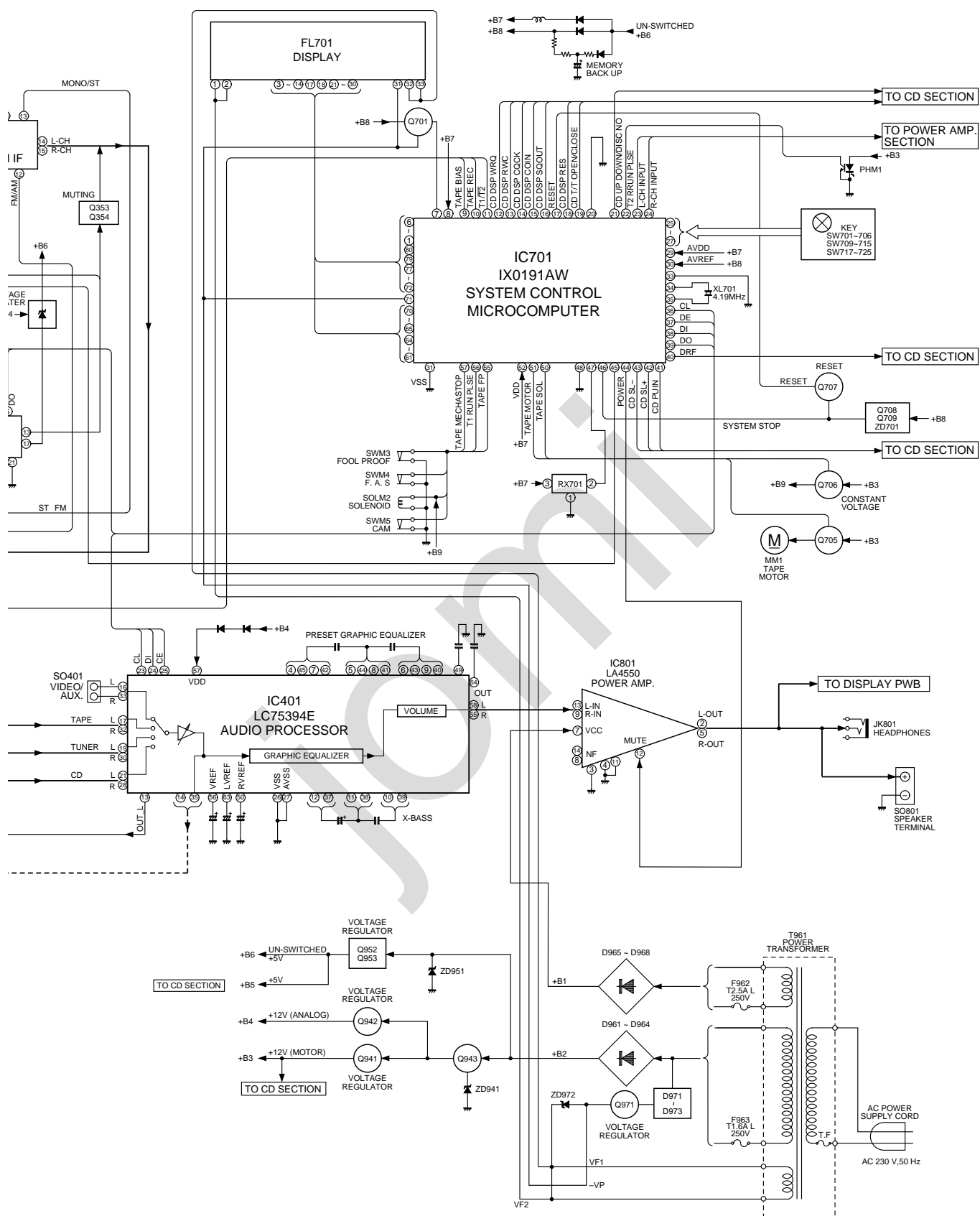


Figure 15 BLOCK DIAGRAM (3/3)

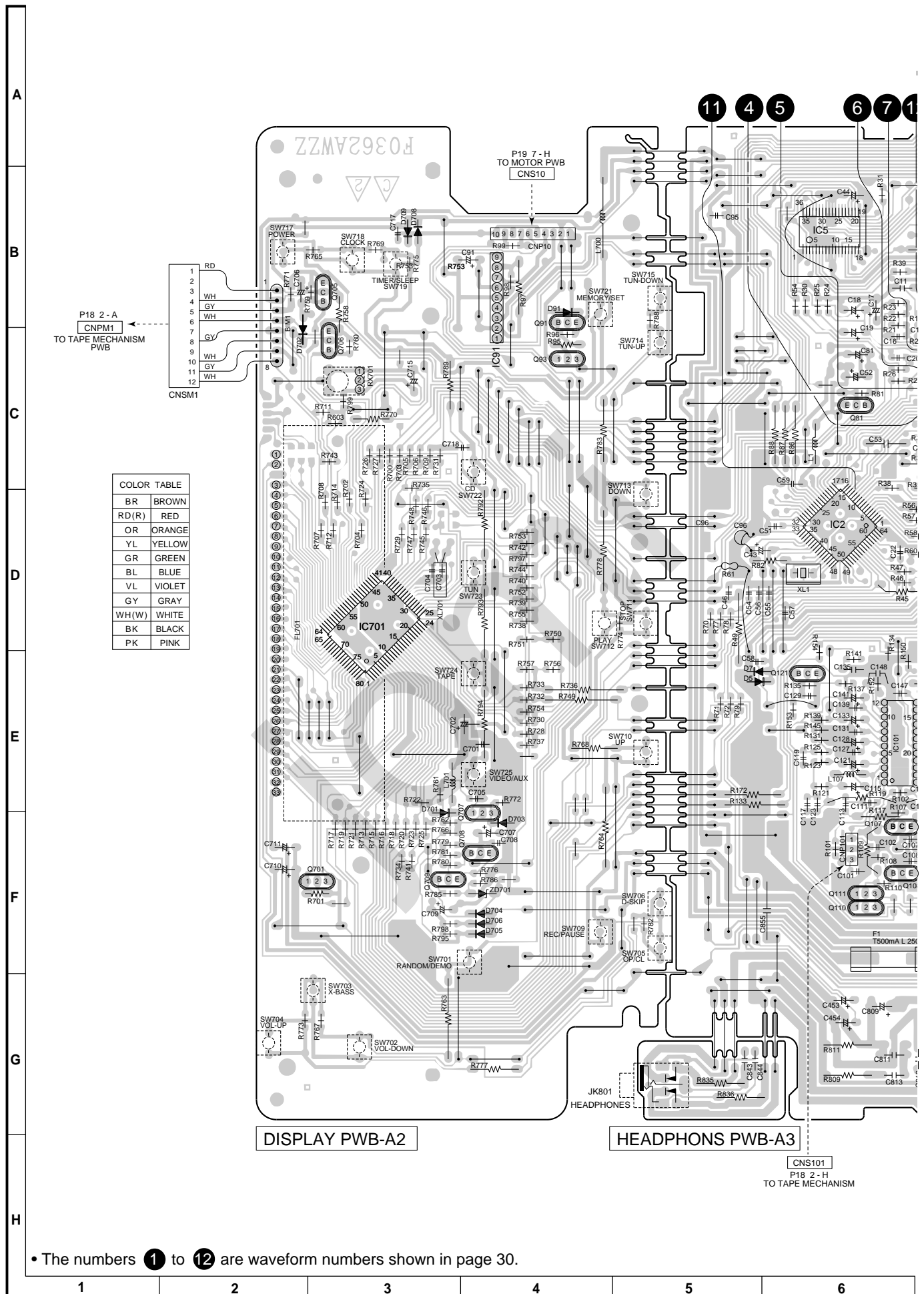


Figure 16 WIRING SIDE OF P.W.BOARD (1/4)

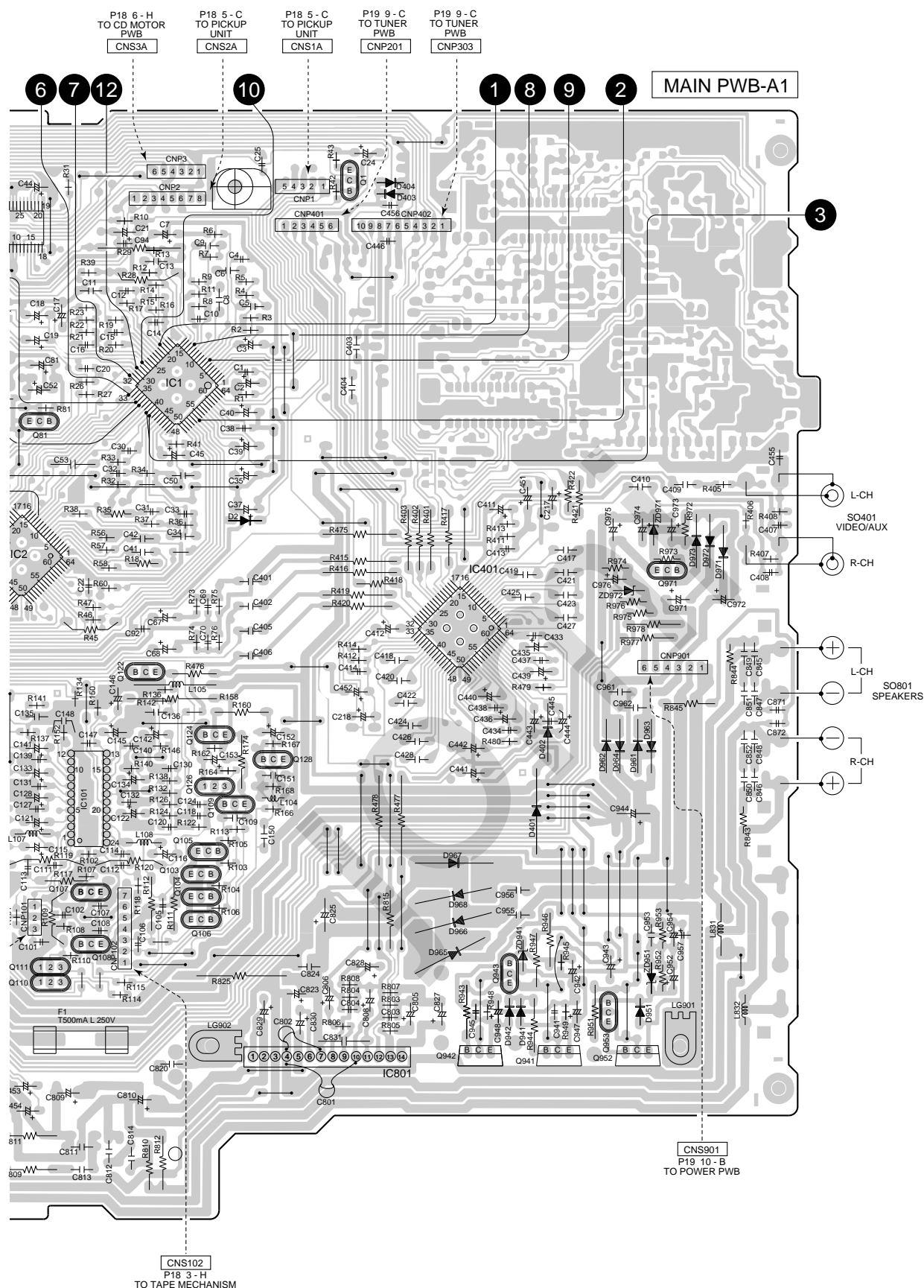


Figure 17 WIRING SIDE OF P.W.BOARD (2/4)

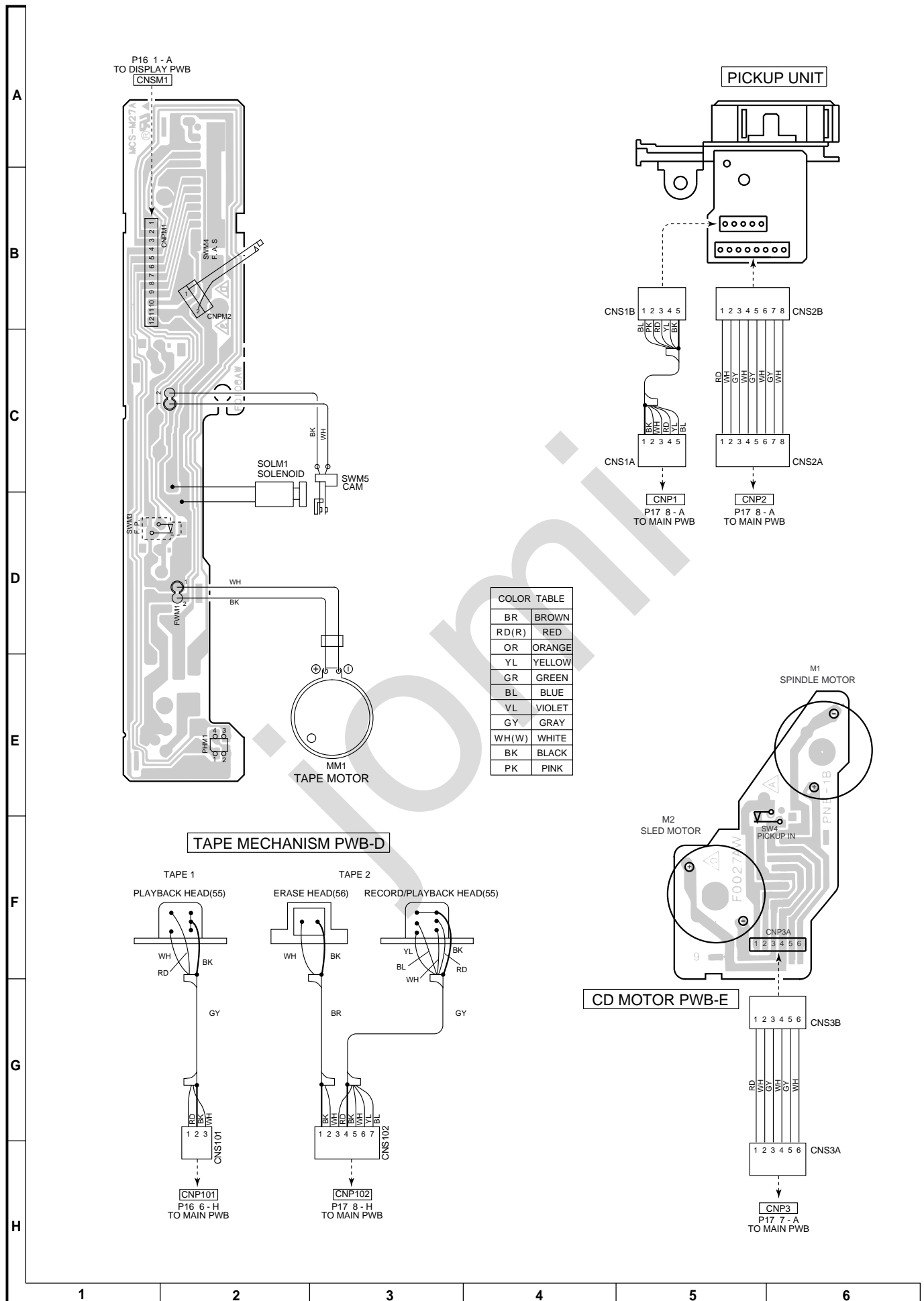
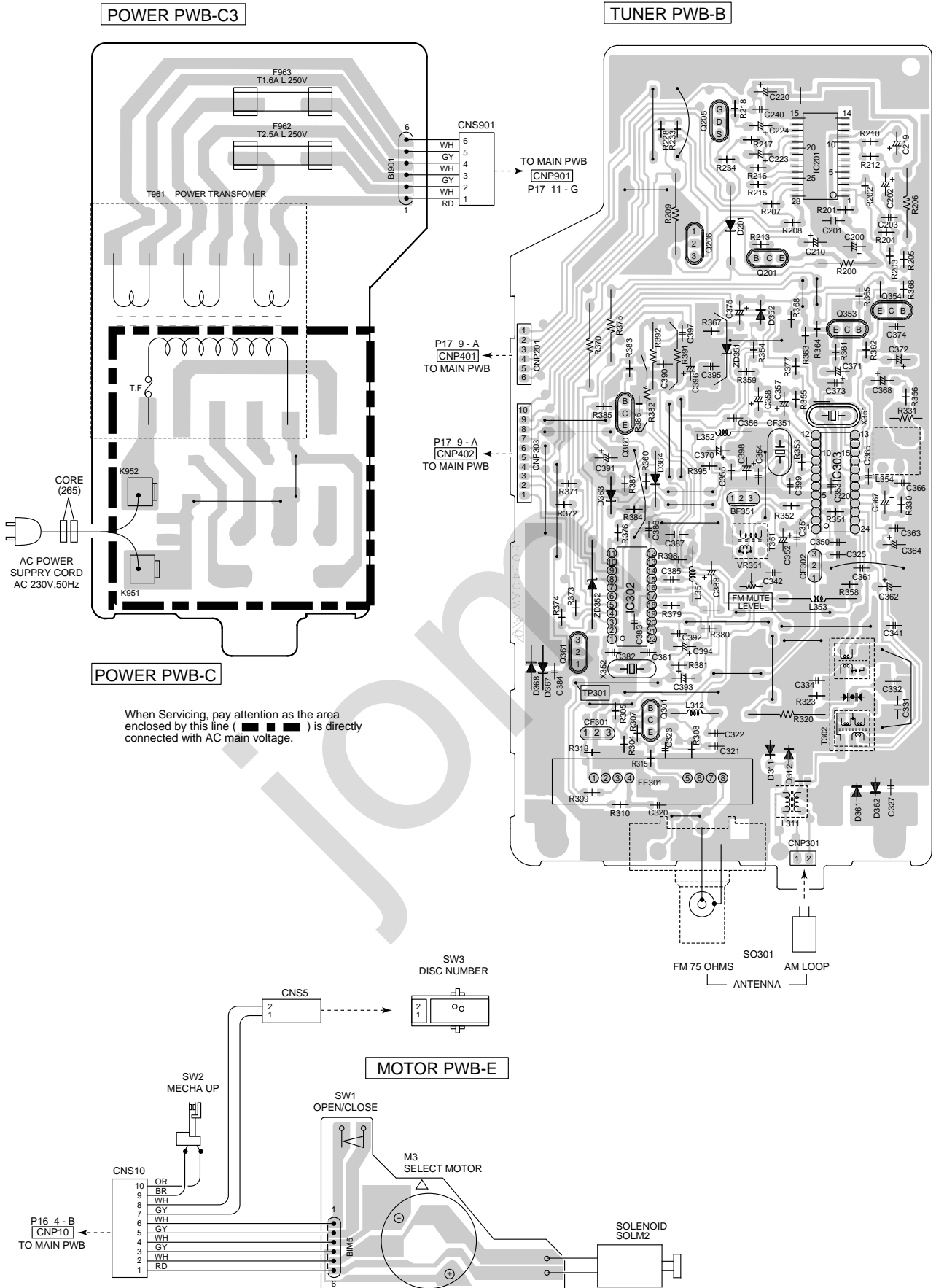


Figure 18 WIRING SIDE OF P.W.BOARD (3/4)



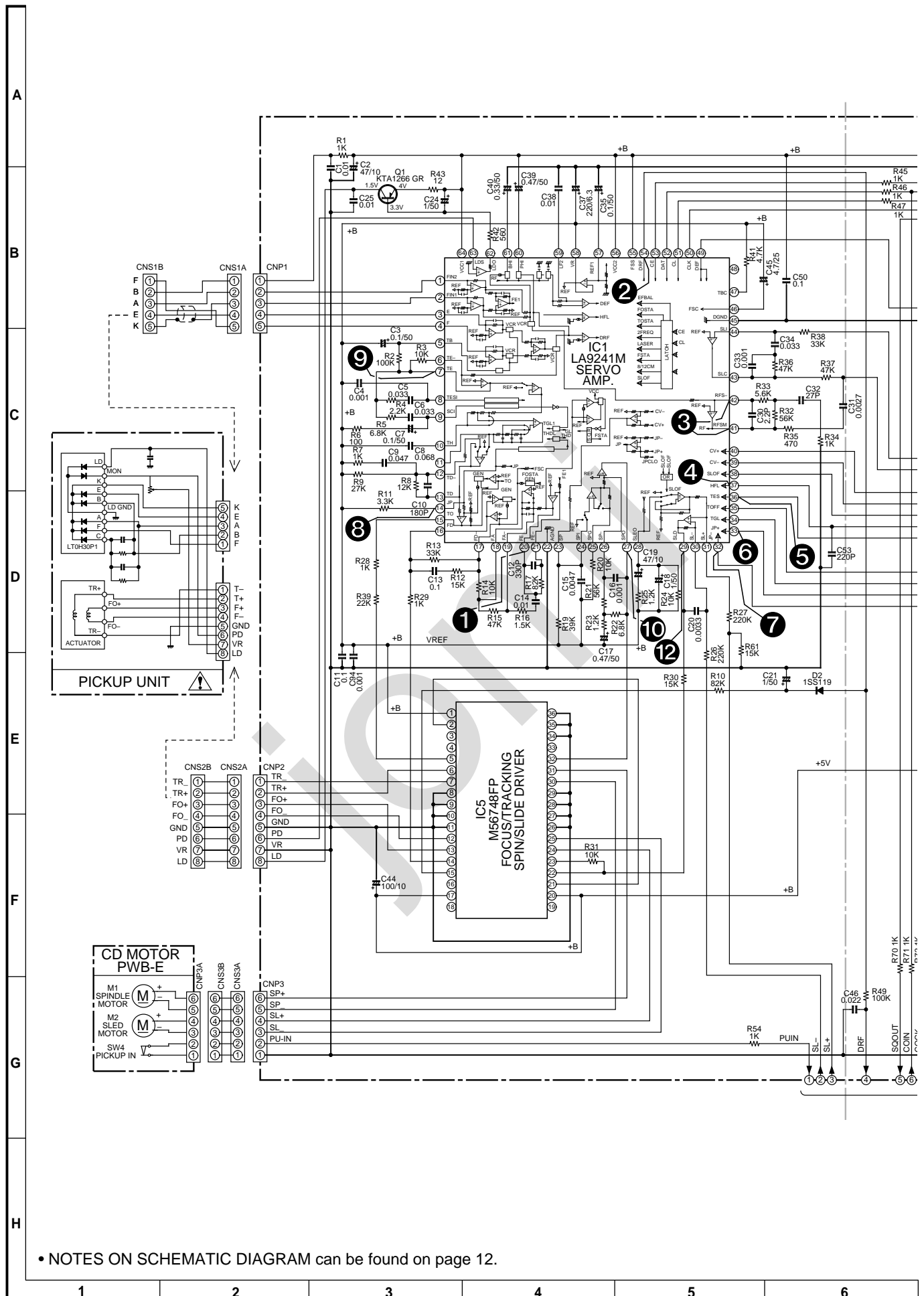
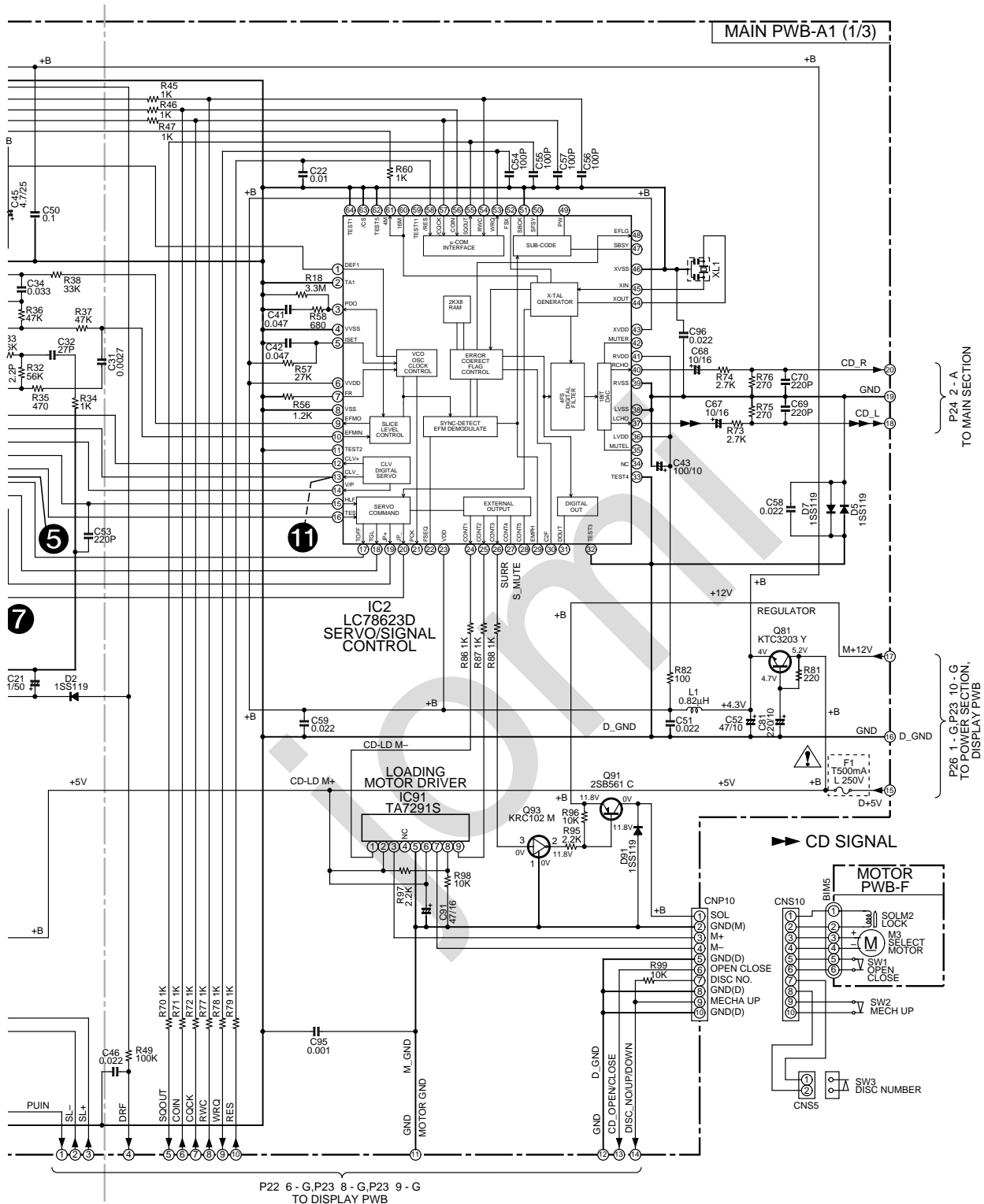


Figure 20 SCHEMATIC DIAGRAM (1/9)



• The numbers 1 to 12 are waveform numbers shown in page 30.

7	8	9	10	11	12
---	---	---	----	----	----

Figure 21 SCHEMATIC DIAGRAM (2/9)

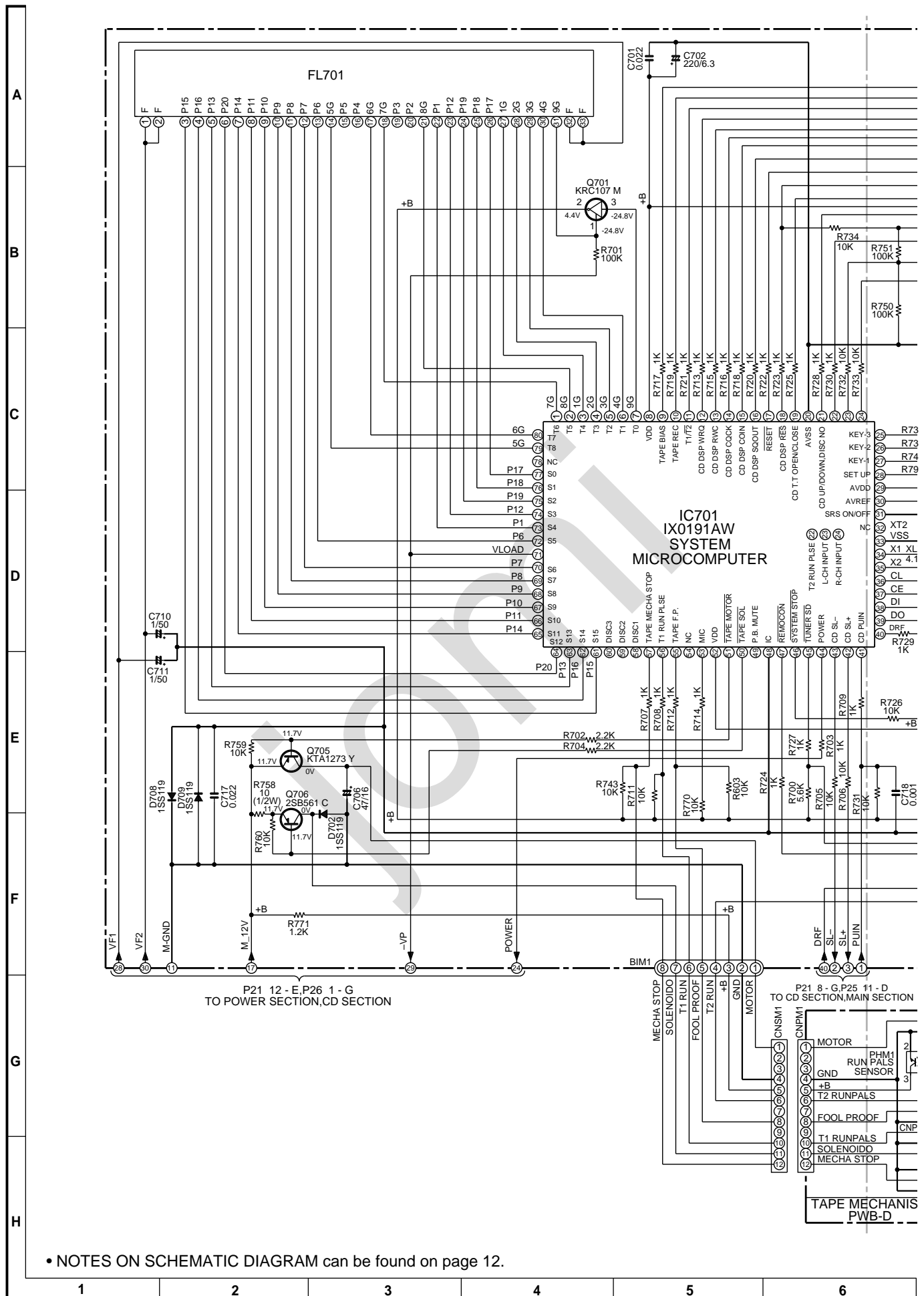


Figure 22 SCHEMATIC DIAGRAM (3/9)

DISPLAY PWB-A2

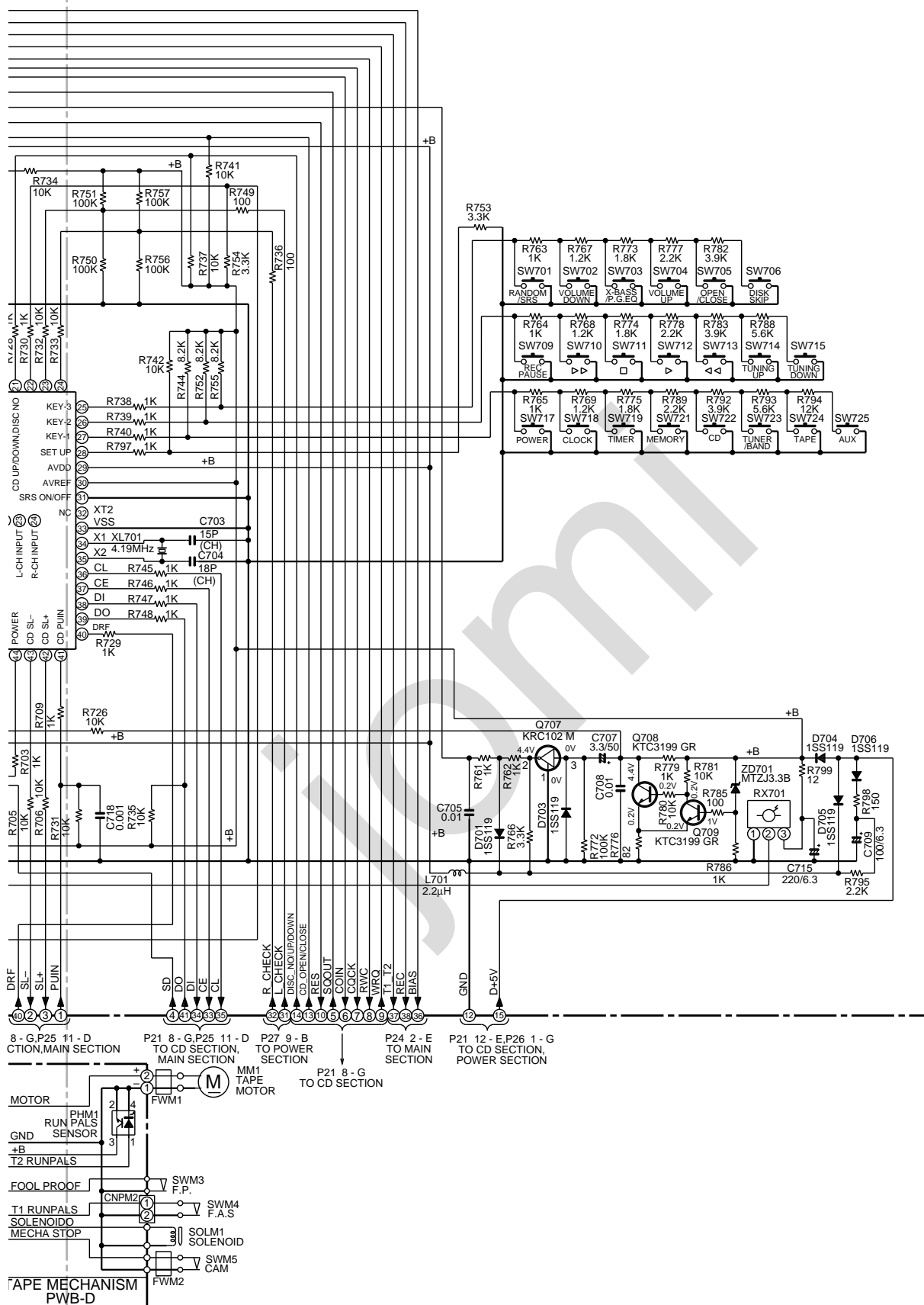


Figure 23 SCHEMATIC DIAGRAM (4/9)

- 24 -

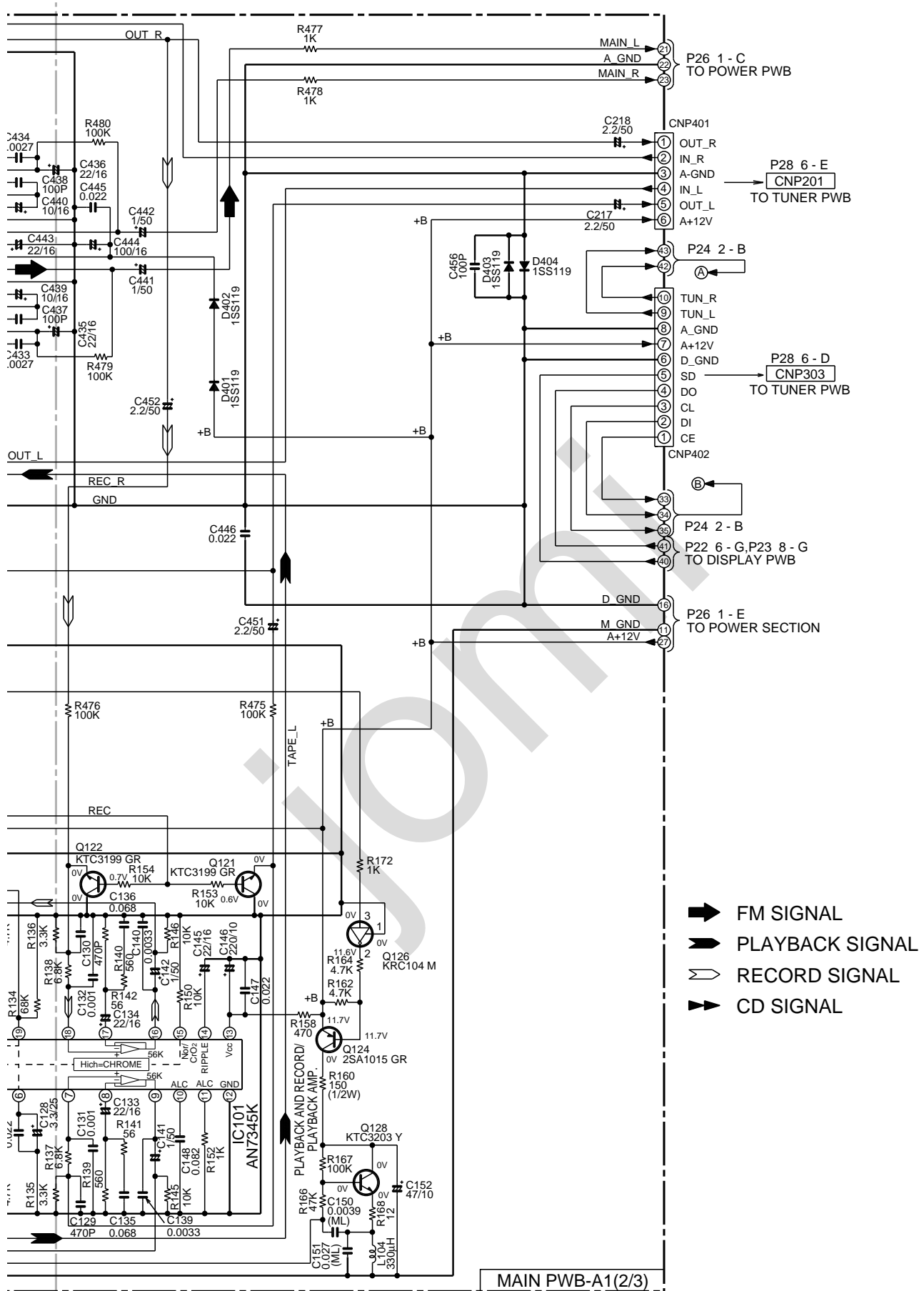
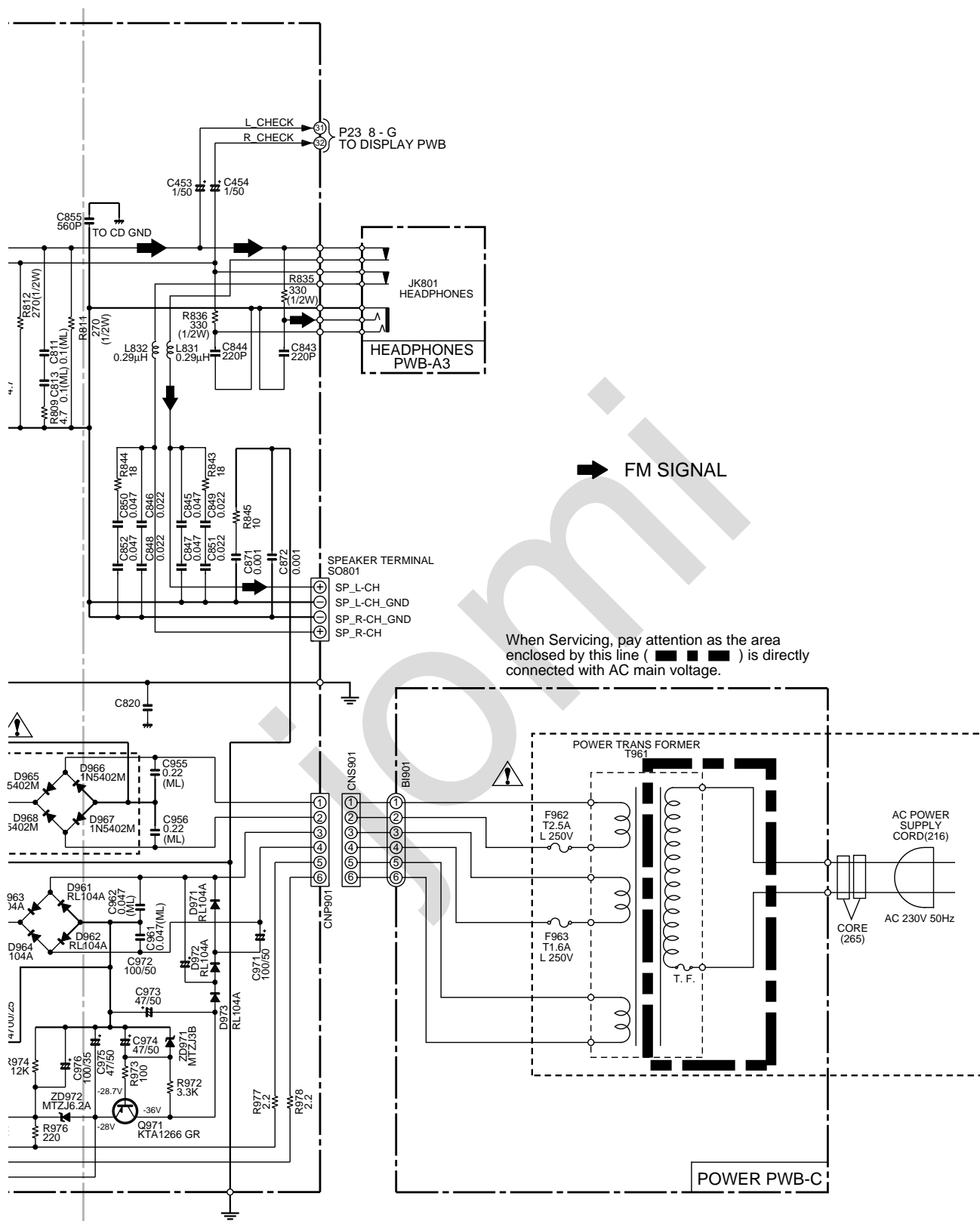


Figure 25 SCHEMATIC DIAGRAM (6/9)



- 26 -



7	8	9	10	11	12
---	---	---	----	----	----

Figure 27 SCHEMATIC DIAGRAM (8/9)



- 28 -

VOLTAGE

IC1	
PIN NO.	VOLTAGE
1	2V
2	2V
3	2.1V
4	2.1V
5	2V
6	2V
7	2V
8	2V
9	2V
10	2V
11	2V
12	2V
13	2V
14	2V
15	2V
16	2V
17	2V
18	2V
19	2V
20	2V
21	2V
22	0V
23	2V
24	2V
25	2V
26	2V
27	2V
28	2V
29	2V
30	1.8V
31	1.8V
32	0V
33	0V
34	4V
35	4V
36	0V
37	0V
38	4V
39	0V
40	0V
41	0.3V
42	2V
43	2.1V
44	2.1V
45	0V
46	2V
47	2V
48	0V
49	0V
50	2V
51	4V
52	4V
53	0V
54	4V
55	4V
56	4V
57	2.1V
58	2.1V
59	0V
60	0V
61	2V
62	3.4V
63	0V
64	4V

IC2	
PIN NO.	VOLTAGE
1	0V
2	0V
3	0V
4	0V
5	1.8V
6	4V
7	0V
8	0V
9	2V
10	2V
11	0V
12	0V
13	0V
14	4V
15	0V
16	0V
17	4V
18	4V
19	0V
20	0V
21	2V
22	0V
23	4V
24	0V
25	0V
26	0V
27	0V
28	0V
29	0V
30	4V
31	2V
32	0V
33	0V
34	0V
35	4V
36	3.8V
37	1.7V
38	0V
39	0V
40	1.7V
41	4V
42	4V
43	4V
44	1.8V
45	1.7V
46	0V
47	0V
48	1.8V
49	0V
50	2V
51	0V
52	2V
53	0V
54	0V
55	0V
56	4.4V
57	4.4V
58	4.4V
59	0V
60	1.6V
61	2V
62	0V
63	0V
64	0V

IC5	
PIN NO.	VOLTAGE
1	2V
2	2V
3	0V
4	2V
5	2V
6	2.2V
7	2.2V
8	0V
9	0V
10	0V
11	0V
12	0V
13	2.2V
14	0V
15	2V
16	0V
17	0V
18	0V
19	0.7V
20	5.2V
21	2V
22	2V
23	2V
24	2V
25	2.2V
26	0V
27	0V
28	0V
29	0V
30	2.2V
31	2.2V
32	2V
33	2V
34	0V
35	0V
36	0V

IC91	
PIN NO.	VOLTAGE
1	0V
2	5.1V
3	0.1V
4	0V
5	0V
6	5.1V
7	0V
8	4.2V
9	0V

IC101	
PIN NO.	VOLTAGE
1	0V
2	0V
3	0.6V
4	3V
5	0V
6	1.3V
7	0V
8	0.6V
9	3V
10	3V
11	0V
12	0V
13	6V
14	3.7V
15	0V
16	3V
17	0.6V
18	0V
19	0.8V
20	0V
21	3V
22	0.6V
23	0V
24	0V

IC201	
PIN NO.	VOLTAGE
1	9.8V
2	4.9V
3	4.9V
4	4.9V
5	4.9V
6	4.9V
7	4.9V
8	9V
9	4.9V
10	4.9V
11	4.9V
12	4.9V
13	4.9V
14	4.9V
15	0V
16	4.9V
17	4.9V
18	4.9V
19	4.9V
20	4.9V
21	4.9V
22	4.9V
23	4.9V
24	4.9V
25	4.9V
26	4.9V
27	4.9V
28	4.9V

IC302	
PIN NO.	VOLTAGE
1	2.4V(2.6V)
2	0V(0V)
3	0V(0V)
4	0V(4.3V)
5	0V(0V)
6	4.5V(4.4V)
7	0.2V(3.5V)
8	4.3V(4V)
9	10.5V(9.8V)
10	4V(0V)
11	4.6V(5.2V)
12	0V(0V)
13	4V(0.2V)
14	0V(0V)
15	0V(2.5V)
16	2.3V(0V)
17	4.3V(5.2V)
18	0.9V(0.9V)
19	0.9V(0.9V)
20	2.4V(1.1V)
21	0V(0V)
22	2.5V(2.8V)

IC303	
PIN NO.	VOLTAGE
1	2.13V(2.14V)
2	4.6V(5V)
3	2.1V(2.1V)
4	2.1V(2.1V)
5	0V(0V)
6	4.5V(4.4V)
7	4.8V(5.2V)
8	2.5V(3.5V)
9	4.6V(5.1V)
10	0V(0V)
11	3.4V(2V)
12	3.4V(1.2V)
13	3.6V(2.2V) <2V>
14	1.3V(1.4V)
15	1.3V(1.4V)
16	2.1V(2.1V)
17	2.5V(0V)
18	2.4V(1.1V)
19	0V(2V)
20	1.5V(1.5V)
21	2.4V(2.1V)
22	2.4V(2.0V)
23	4.6V(5.1V)
24	3V(5.6V)

IC401	
PIN NO.	VOLTAGE
1	5V
2	5V
3	5V
4	5V
5	5V
6	5V
7	5V
8	5V
9	5V
10	5V
11	5V
12	5V
13	5V
14	5V
15	5.1V
16	4.7V
17	4.7V
18	0V
19	4.7V
20	0V
21	4.7V
22	0V
23	0V
24	4.4V
25	0V
26	0V
27	0V
28	4.7V
29	0V
30	4.7V
31	0V
32	4.7V
33	4.7V
34	5.1V
35	5.1V
36	5.1V
37	5.1V
38	5.1V
39	5.1V
40	5.1V
41	5.1V
42	5.1V
43	5.1V
44	5.1V
45	5.1V
46	5.1V
47	5.1V
48	5V
49	5.1V
50	5.1V
51	5.1V
52	5.1V
53	5.1V
54	0V
55	5.1V
56	5.1V
57	10.2V
58	5.1V
59	0V
60	5.1V
61	5.1V
62	5.1V
63	5.1V
64	5.1V

IC701			
PIN NO.	VOLTAGE	PIN NO.	VOLTAGE
1	-24.7V	41	0.41V
2	-24.7V	42	0V
3	-24.7V	43	0V
4	-24.7V	44	4.4V
5	-24.7V	45	0V
6	-24.7V	46	4.4V
7	-24.7V	47	4.4V
8	4.4V	48	0V
9	0V	49	2.7V
10	4.4V	50	11.7V
11	4.4V	51	11.7V
12	0.24V	52	4.4V
13	0V	53	4.4V
14	4.4V	54	4.4V
15	4.4V	55	0V
16	0.12V	56	0V
17	0V	57	4.4V
18	4.4V	58	0V
19	0V	59	0V
20	0V	60	0V
21	0V	61	-21.2V
22	3.8V	62	-18V
23	0V	63	-11.5V
24	0V	64	-27.8V
25	4.4V	65	-24.5V
26	4.4V	66	-14.8V
27	4.4V	67	-24.5V
28	0.6V	68	-21.2V
29	4.4V	69	-27.8V
30	0V	70	-18V
31	4.4V	71	-28V
32	0V	72	-11.5V
33	2V	73	-24.4V
34	2V	74	-24.4V
35	0V	75	14.7V
36	0V	76	-27.8V
37	0V	77	-24.4V
38	4.4V	78	-27.8V
39	4.4V	79	-27.8V
40	0V	80	-24.8V

IC801	
PIN NO.	VOLTAGE
1	24.7V
2	14.19V
3	0V
4	0V
5	14.05V
6	24.8V
7	31.8V
8	1.24V
9	5.3mV
10	26.7V
11	0V
12	2.25V
13	5.2mV
14	1.23V