

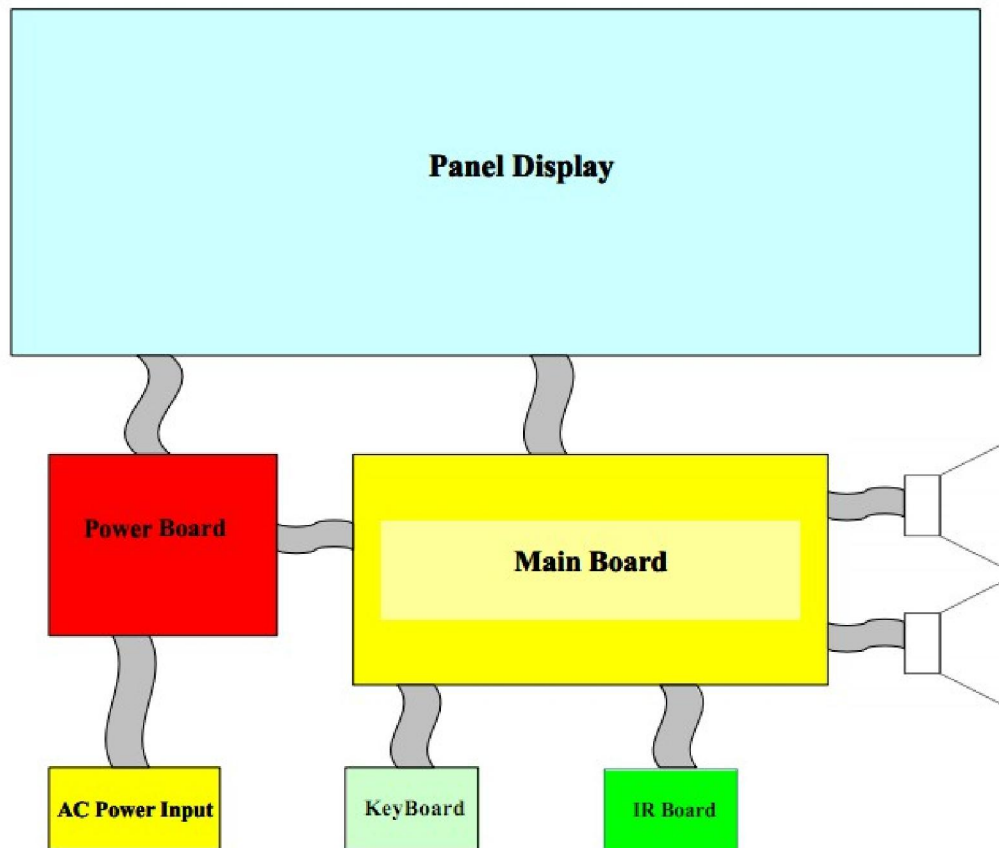
Service Manual

B32PFL3xxx/T3 (TP.VST59S.P89)



LCD TV Service Manual

1. Diagram:



1.1 Function of Board :

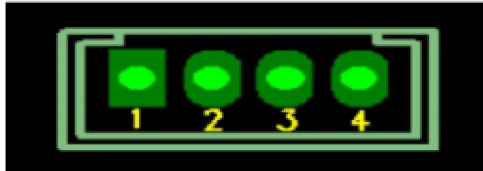
- 1) Main Board: Control all input signals, Decode the video signal, De-interlace, and send digital signals (LVDS signal) sent from image Board and display;
- 2) Power Board: All the power supply;
 *Power supply combined with main board
- 3) Panel: Display all images;
- 4) IR Board: Receive remote operation;
- 5) Key Board : buttons of POWER、 SOURCE、 MENU、
 VOL+/- ,Channel +/-;
- 6) AC Power Input: connecting AC power;

1.2 Part apt to decrease :

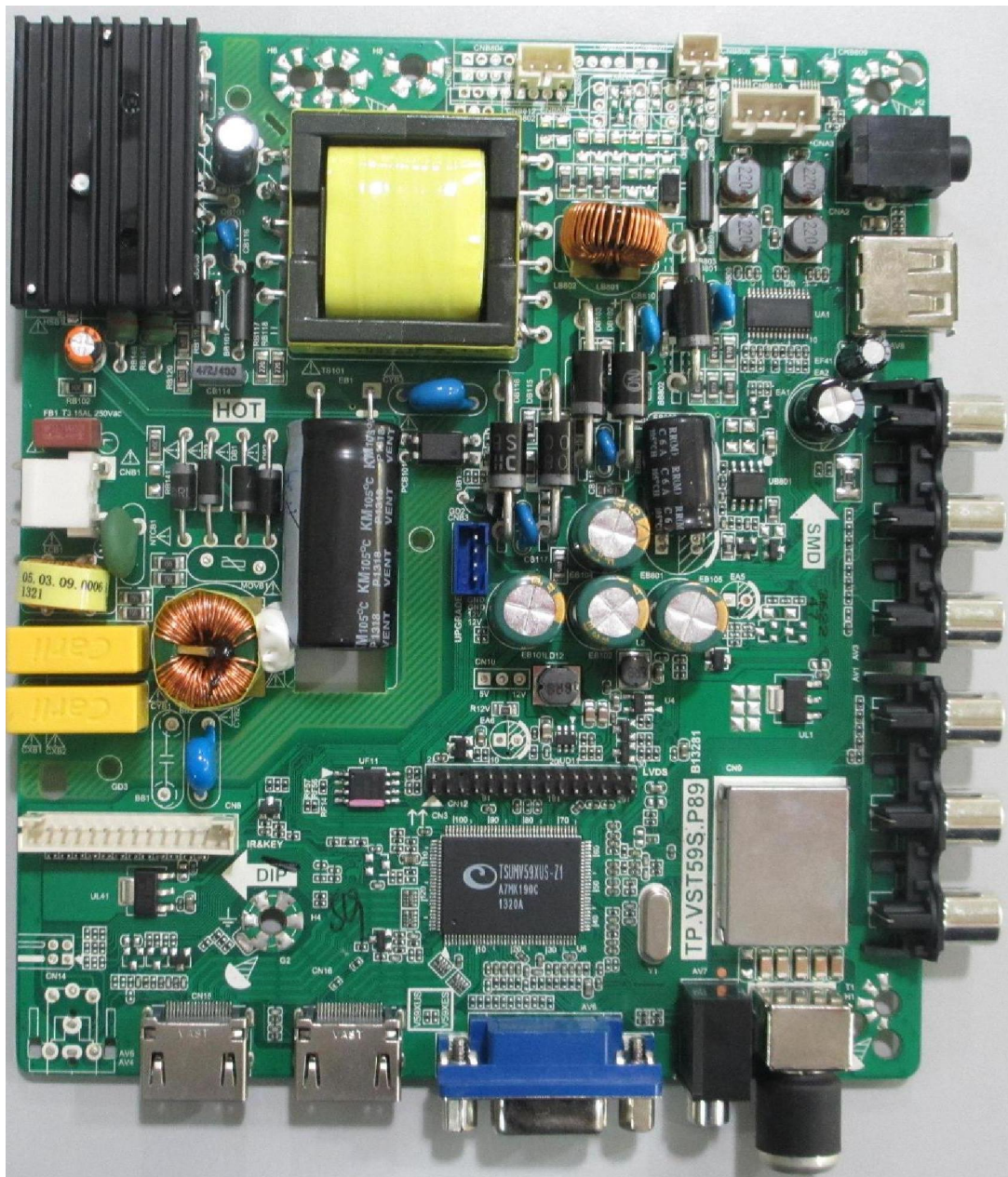
- 1) Bezel, Rear Cover and Panel;
- 2) Terminal of all plugs.

2. Main Board Service Chart

2.1 Main Board and connector definition




2.1.1 Main Board




2.1.2 Main Board interface definition

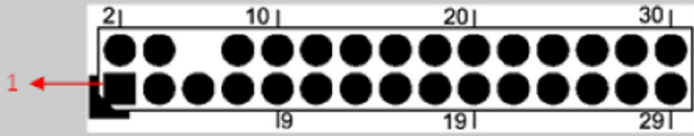
1) CN8 (14pin/2.0):IR & KEY BOARD CONNECTOR

		
NO.	SYMBOL	DESCRIPTION
1	5V	+5V DC Power Supply For IR
2	RED	Red Indicator
3	GRN	Green Indicator
4	IR	IR Receiver
5	GND	Ground
6	K0	Key0
7	K1	Key1
8	K2	Key2
9	K3	Key3
10	K4	Key4
11	K5	Key5
12	K6	Key6
13	K7	Key7
14	GND	Ground


2) CNA3 (4pin/2.54): SPEAKER CONNECTOR

		
NO.	SYMBOL	DESCRIPTION
1	LOUT+	Audio Left Channel Output+
2	LOUT-	Audio Left Channel Output-
3	ROUT-	Audio Right Channel Output-
4	ROUT+	Audio Right Channel Output+

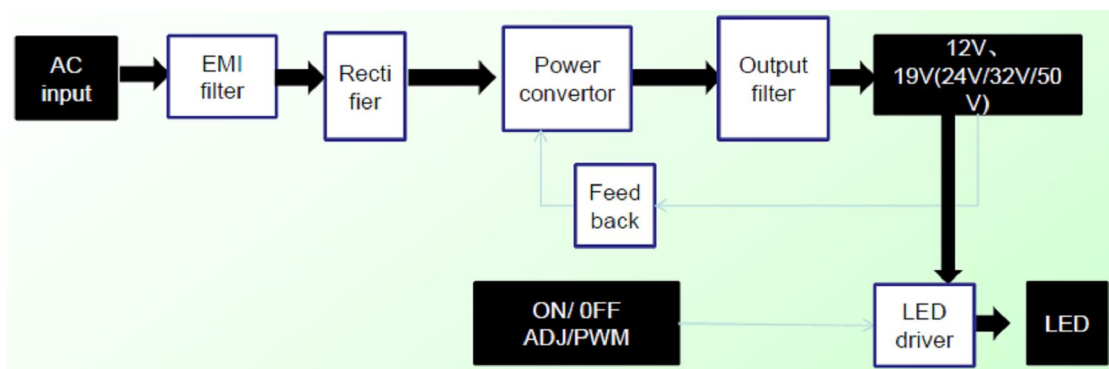
3) CN12 (2×15PIN/2.0) LVDS INTERFACE

		
NO.	SYMBOL	DESCRIPTION
1	VSEL	Power Supply for Panel
2	VSEL	
3	VSEL	
4	GND	Ground
5	GND	
6	NC	No Connection
7	TX00-	LVDS ODD 0- Signal
8	TX00+	LVDS ODD 0+ Signal
9	TX01-	LVDS ODD 1- Signal
10	TX01+	LVDS ODD 1+ Signal
11	TX02-	LVDS ODD 2- Signal
12	TX02+	LVDS ODD 2+ Signal
13	GND	Ground
14	GND	
15	TXOC-	LVDS ODD Clock- Signal
16	TXOC+	LVDS ODD Clock+ Signal
17	TX03-	LVDS ODD 3- Signal
18	TX03+	LVDS ODD 3+ Signal
19	TXE0-	LVDS EVEN 0- Signal
20	TXE0+	LVDS EVEN 0+ Signal
21	TXE1-	LVDS EVEN 1- Signal
22	TXE1+	LVDS EVEN 1+ Signal
23	TXE2-	LVDS EVEN 2- Signal
24	TXE2+	LVDS EVEN 2+ Signal
25	GND	Ground
26	GND	
27	TXEC-	LVDS EVEN Clock- Signal
28	TXEC+	LVDS EVEN Clock+ Signal
29	TXE3-	LVDS EVEN 3- Signal
30	TXE3+	LVDS EVEN 3+ Signal

4) CNB803 (3PIN/2.0) LED DRIVER OUTPUT CONNECTOR

							
NO.	Signal Name	Voltage (Volts)			Current (mA)		
		Max	Nom	Min	Max	Nom	Min
2	NC	/			/		
1	LED-						
3	LED+						

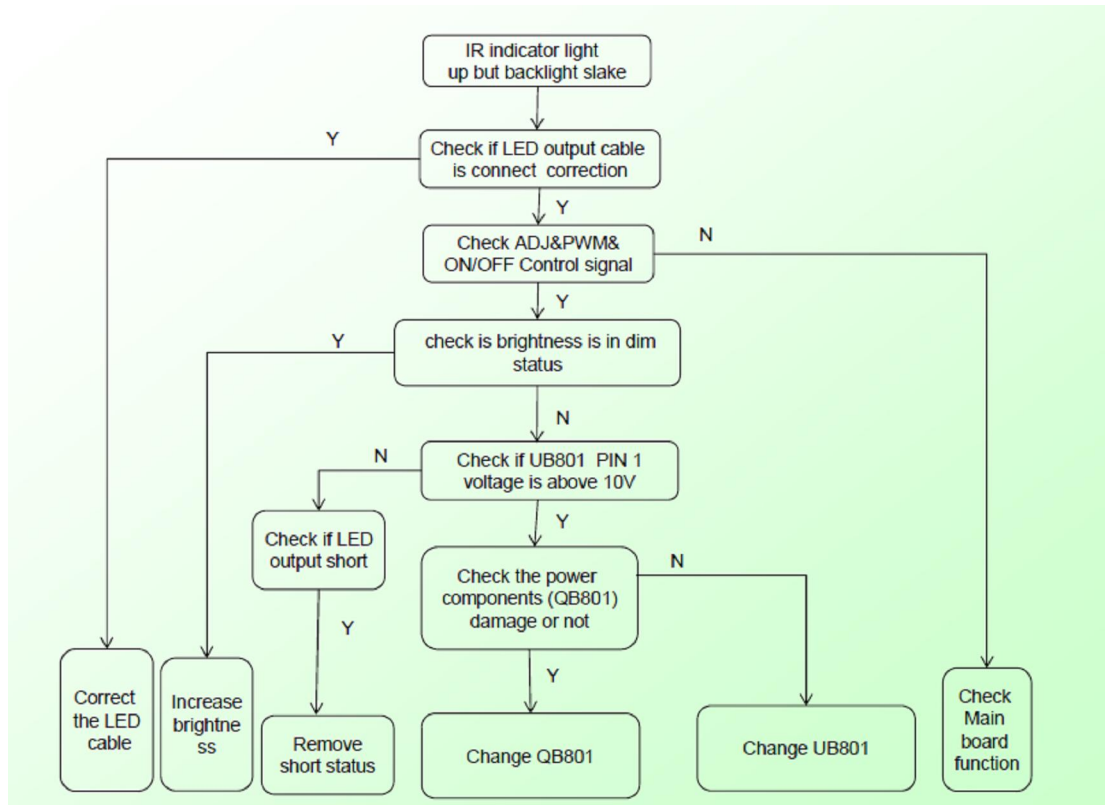
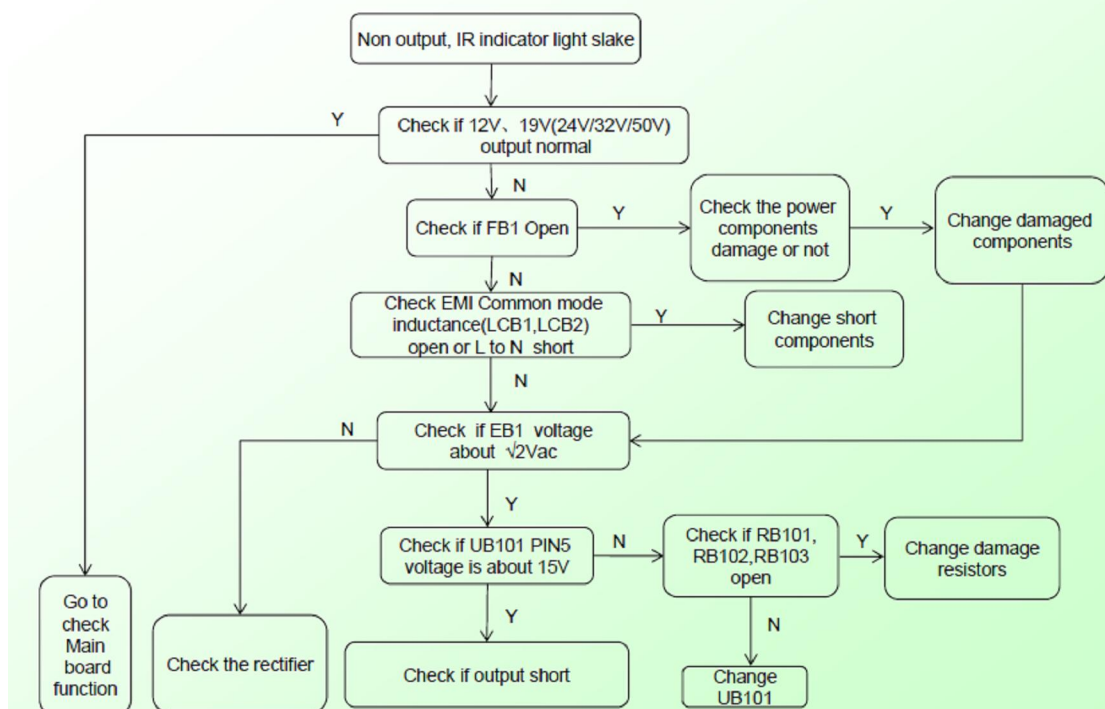
2.2 TP.VST59S.P89 frequently malfunction obviate



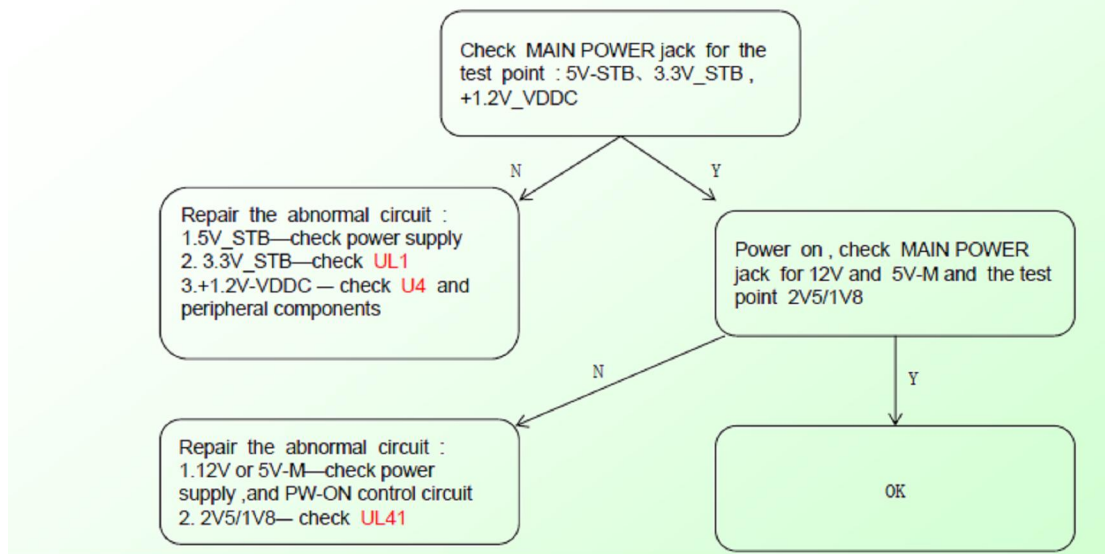
3. Mainboard Common problems solution

3.1 Power Units Problem Solving

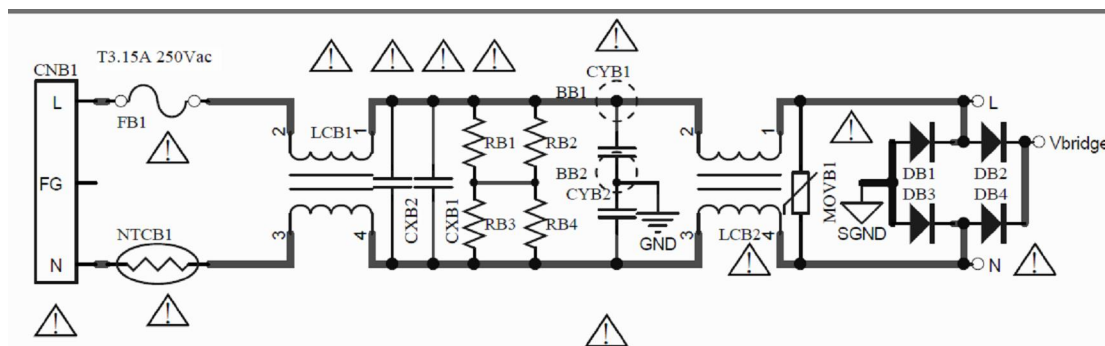
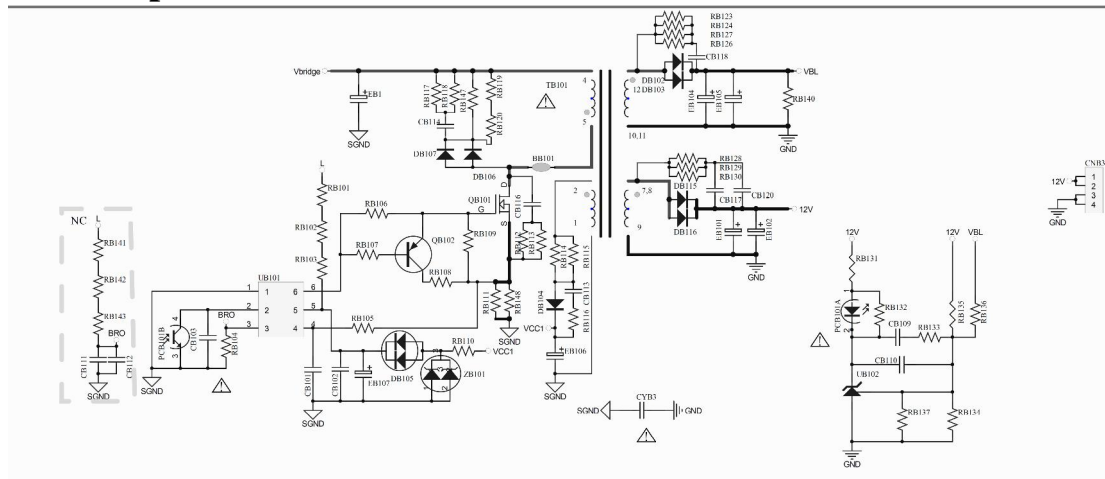
Power Board Service Guide

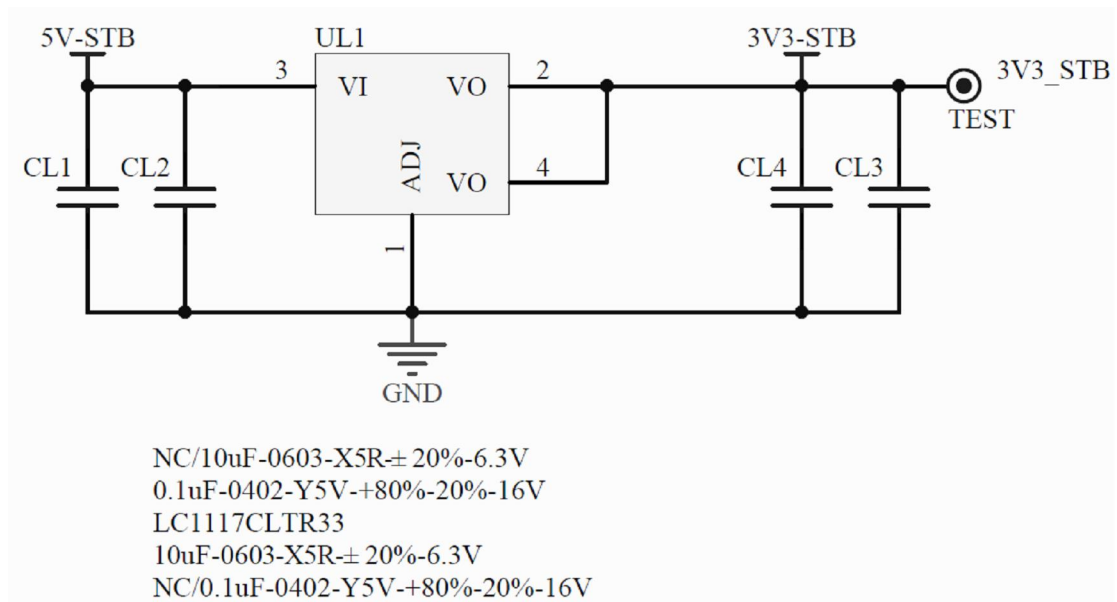
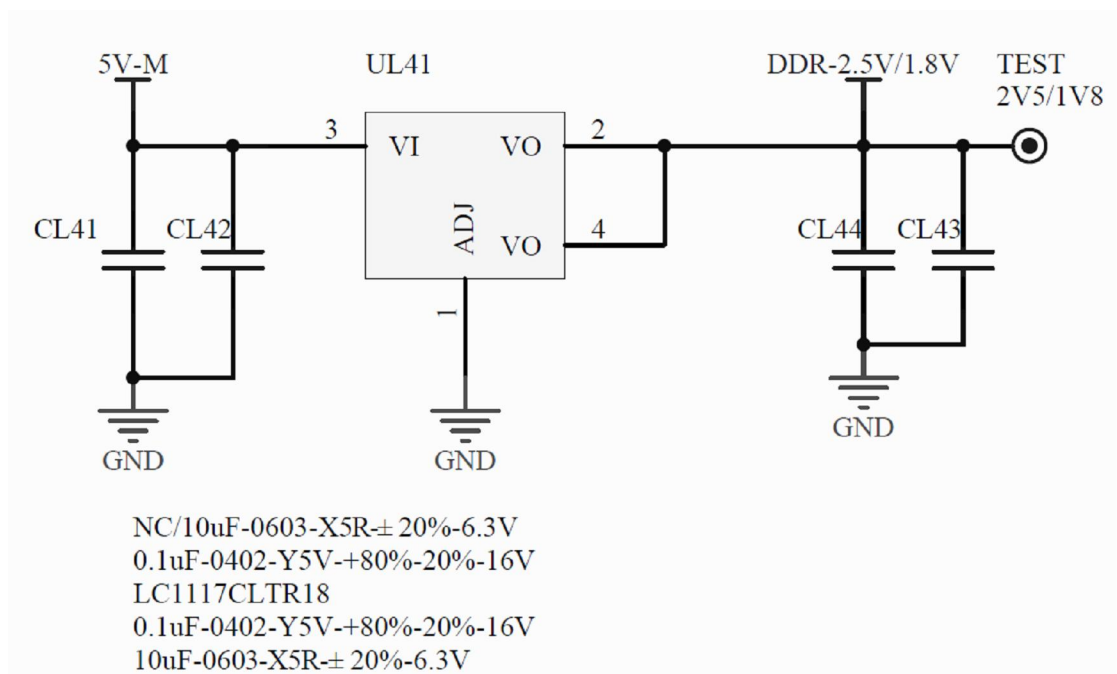
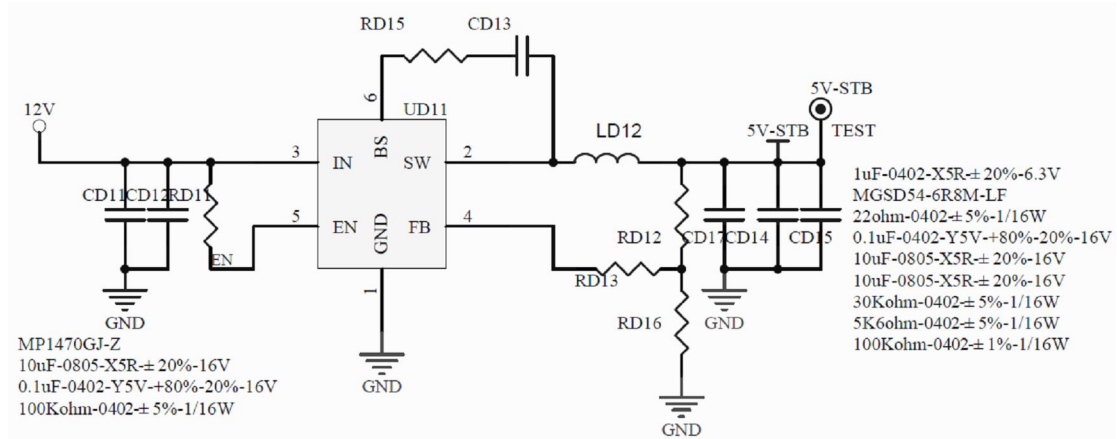


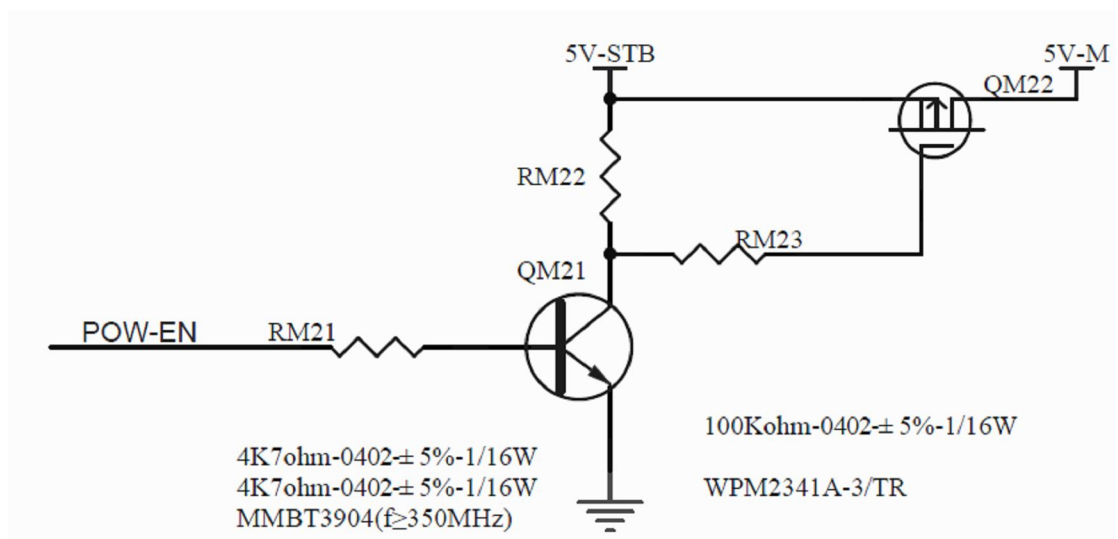
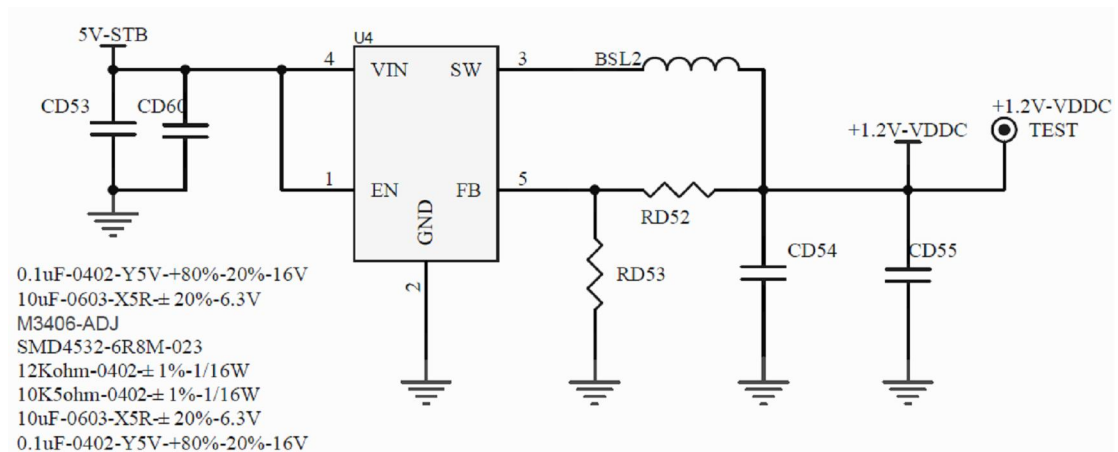
Power Supply Trouble

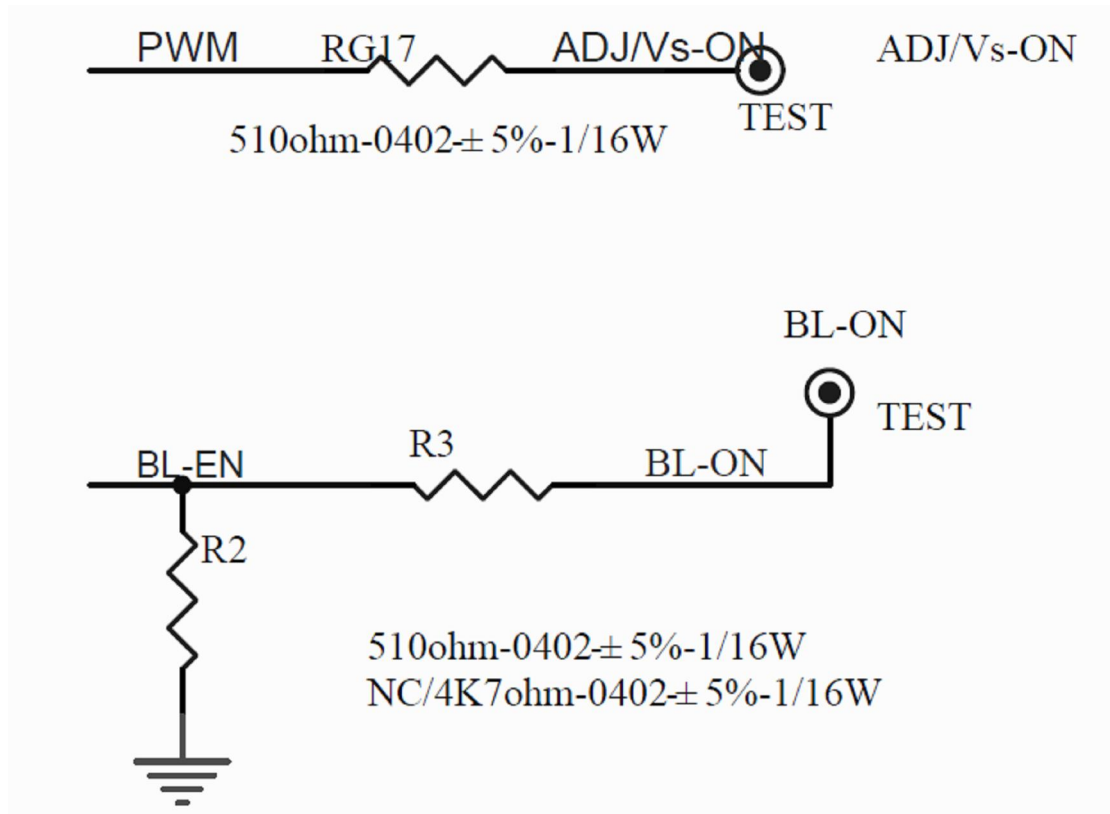


Power input



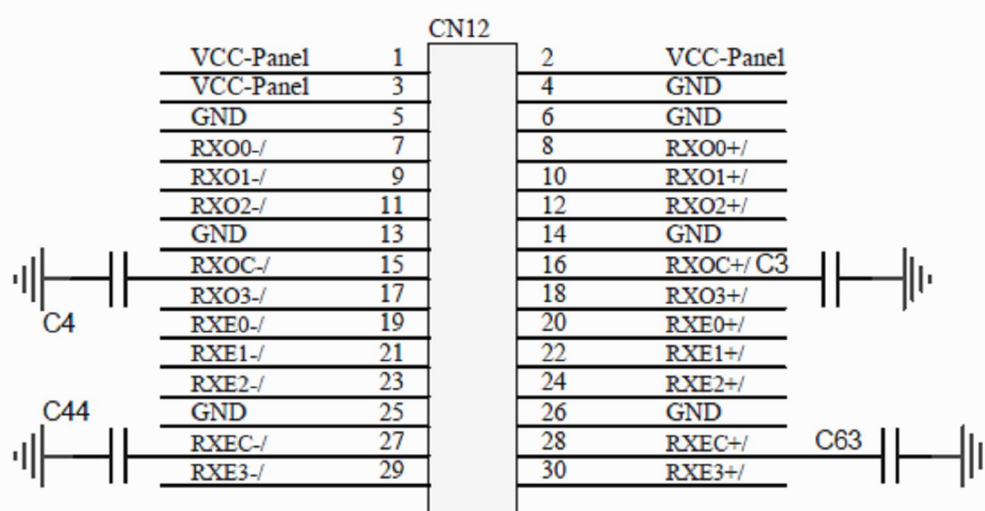
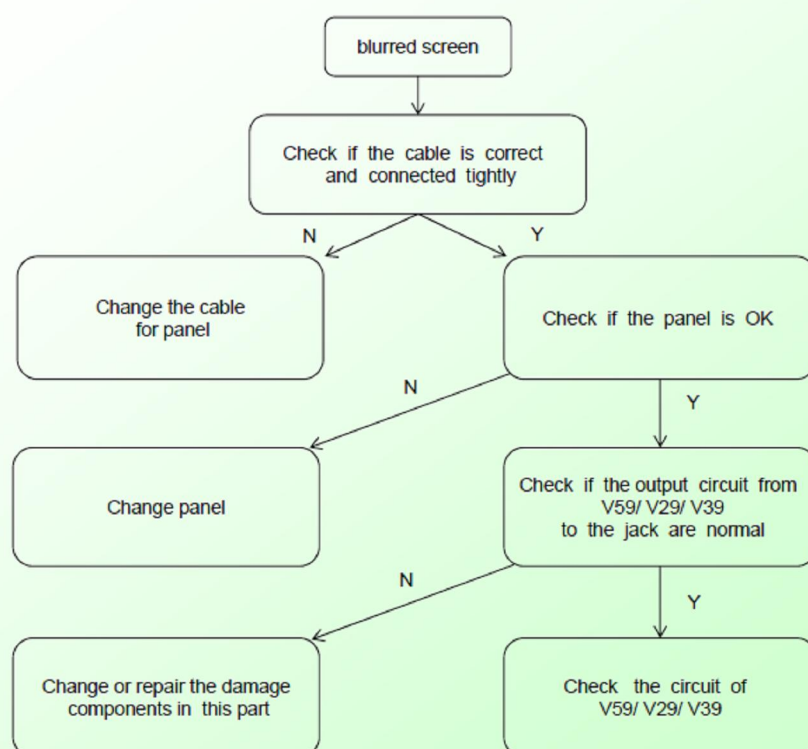




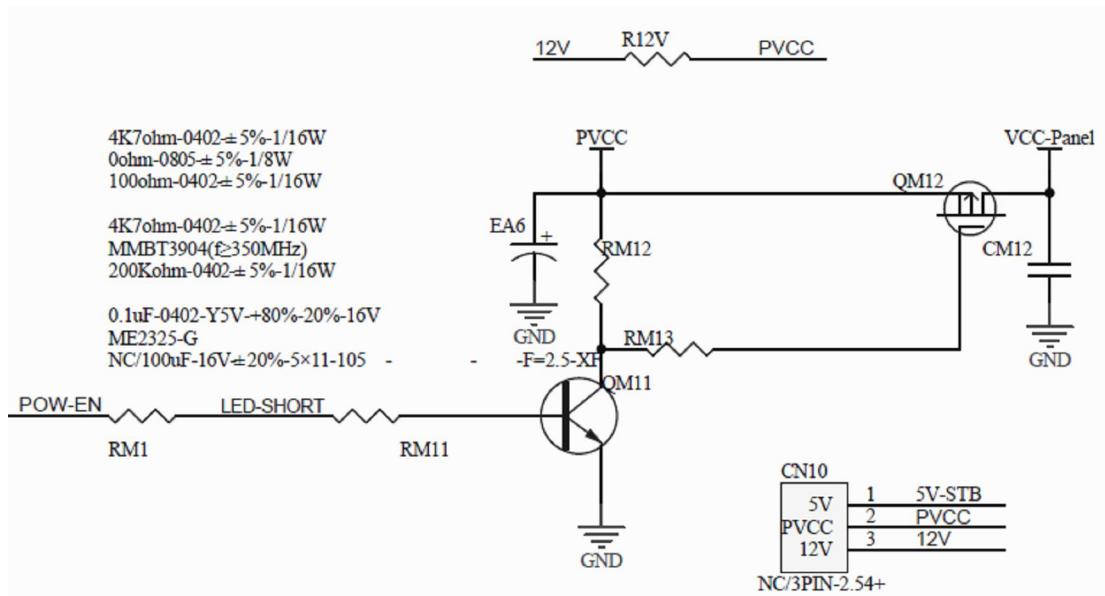


3.2 Display unit(mess)

Display Trouble (blurred screen)

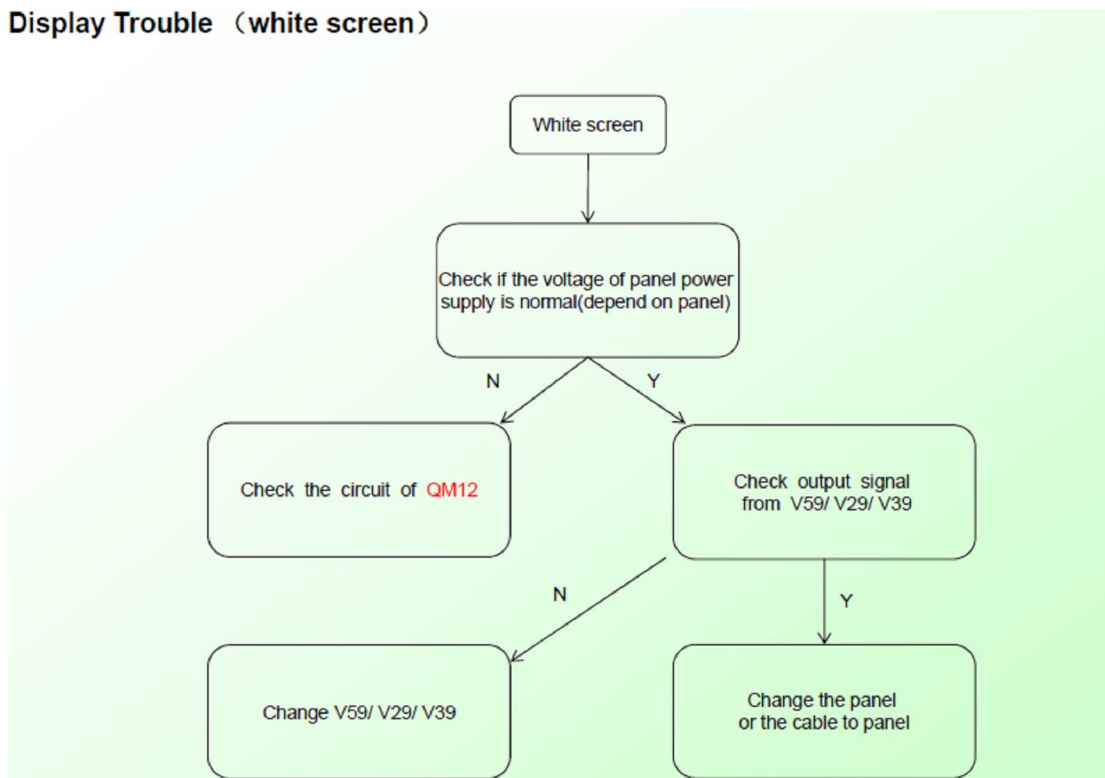


2×15PIN-2.0-D-H-M(=2.6mm)-LK(6PIN)
 NC/5pF-0402-NPO±5%-50V
 NC/5pF-0402-NPO±5%-50V
 NC/5pF-0402-NPO±5%-50V
 NC/5pF-0402-NPO±5%-50V



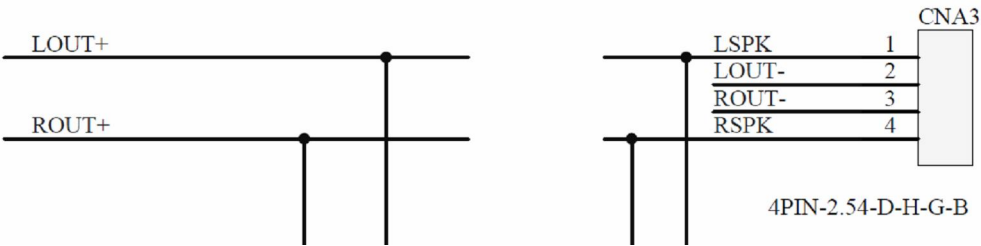
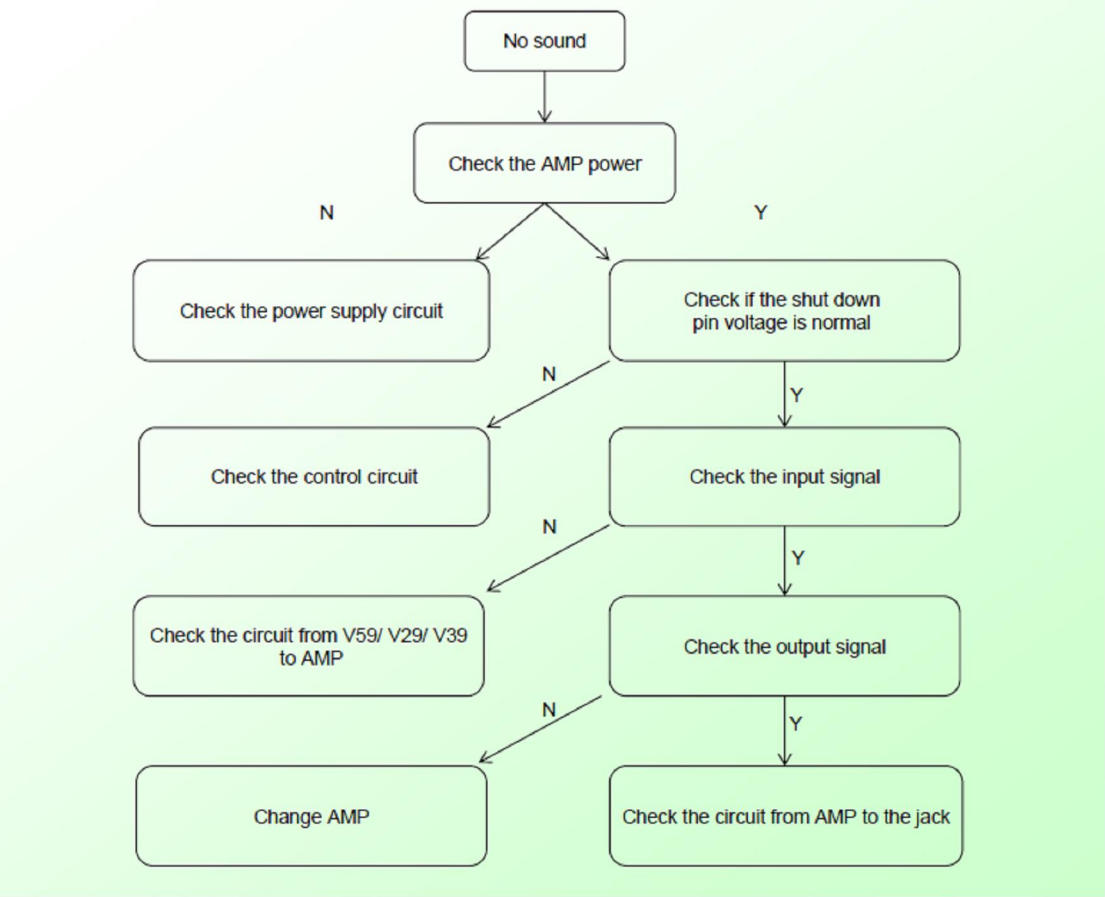
3.3 Display unit(white screen)

Display Trouble (white screen)

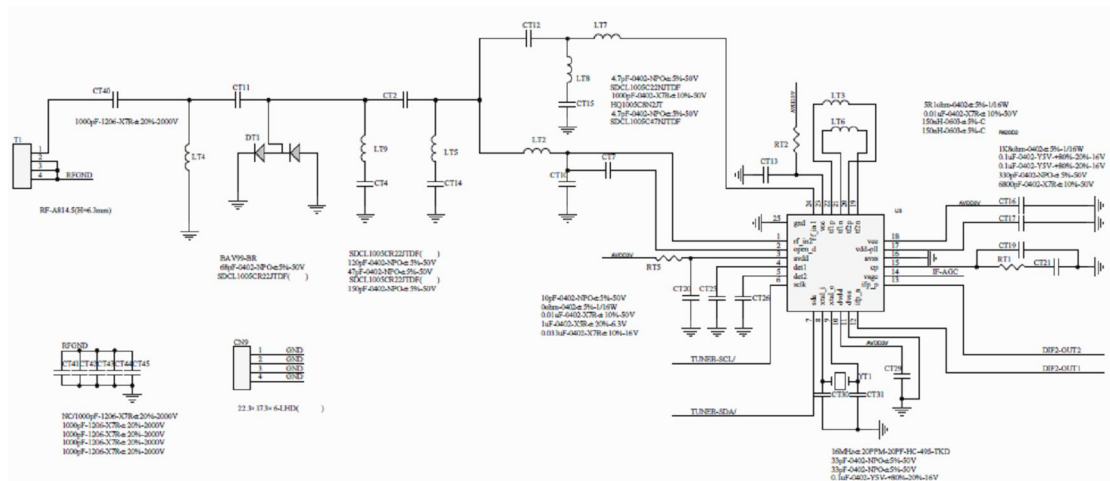
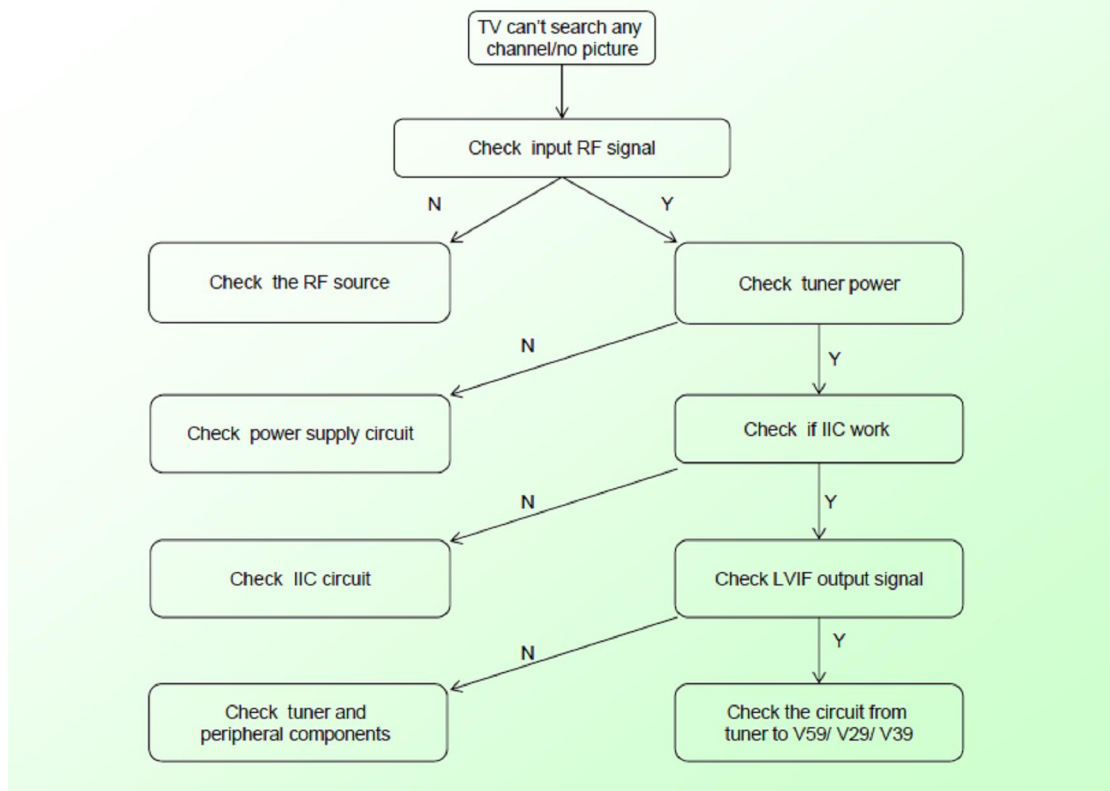


3.4 Audio unit(no sound)

Audio Trouble (No sound)

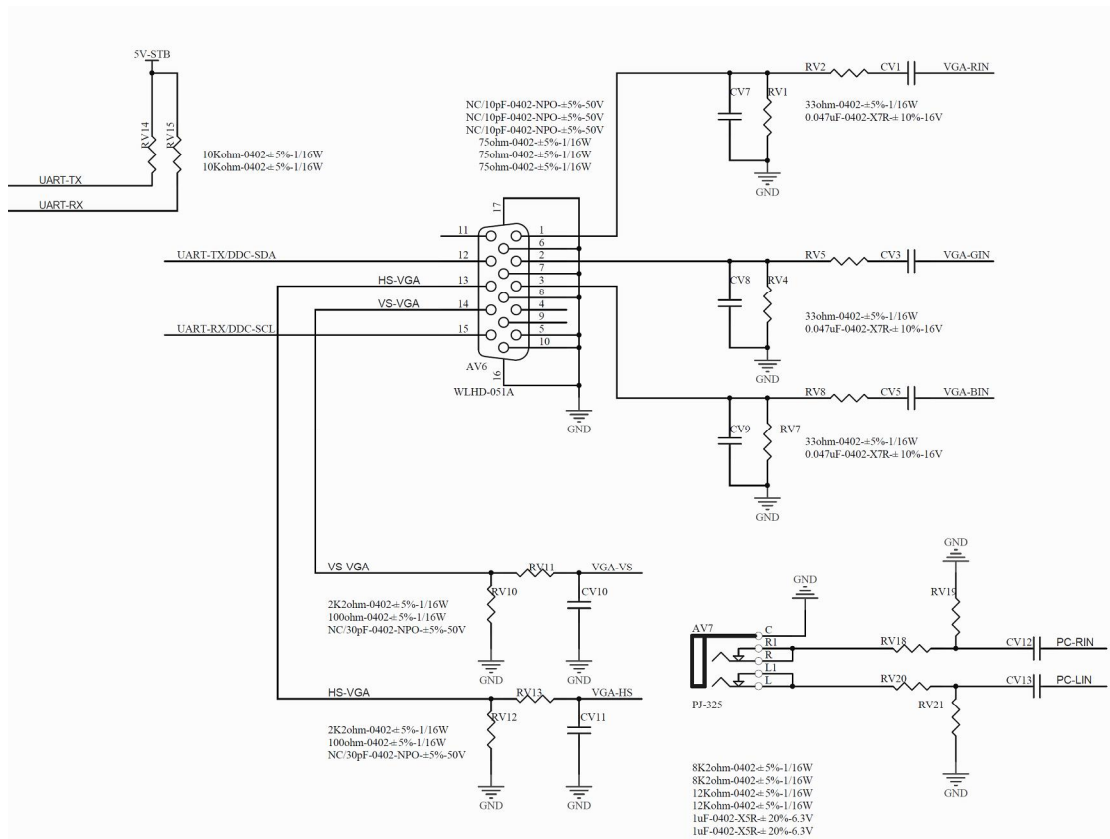
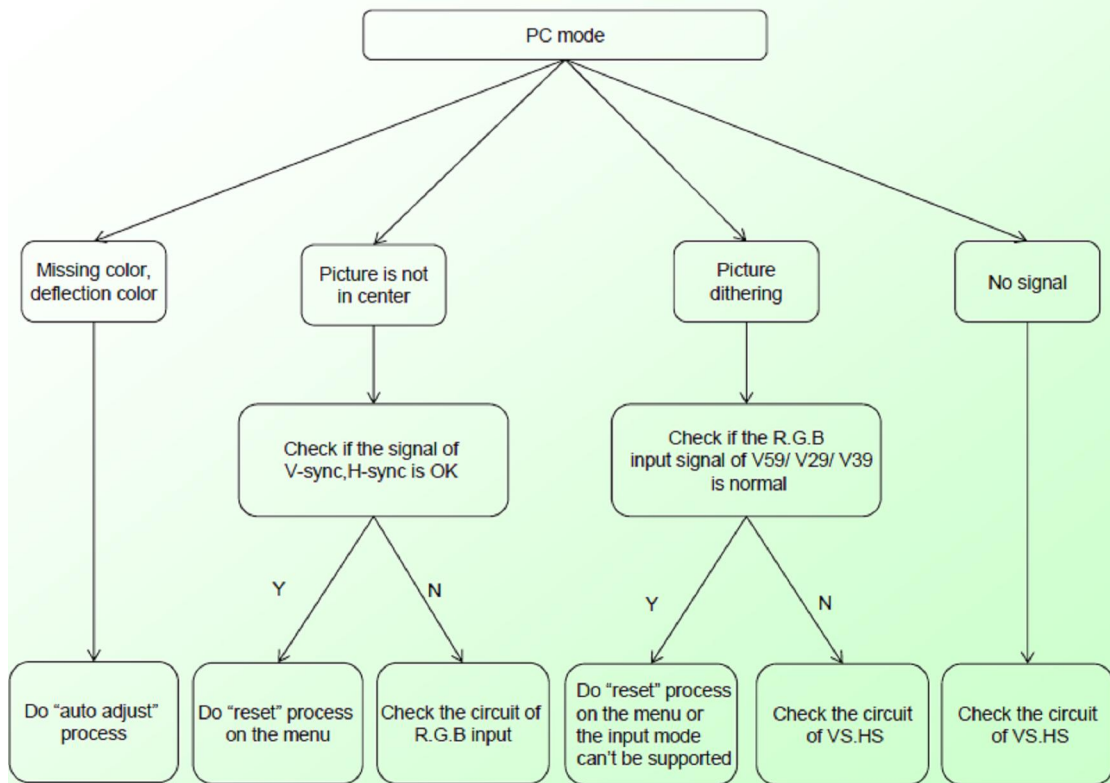


Function Trouble (TV video)



3.6 Function unit (PC)

Function Trouble (PC)



3.7 Function unit(HDMI,YPbPr,CVBS)

