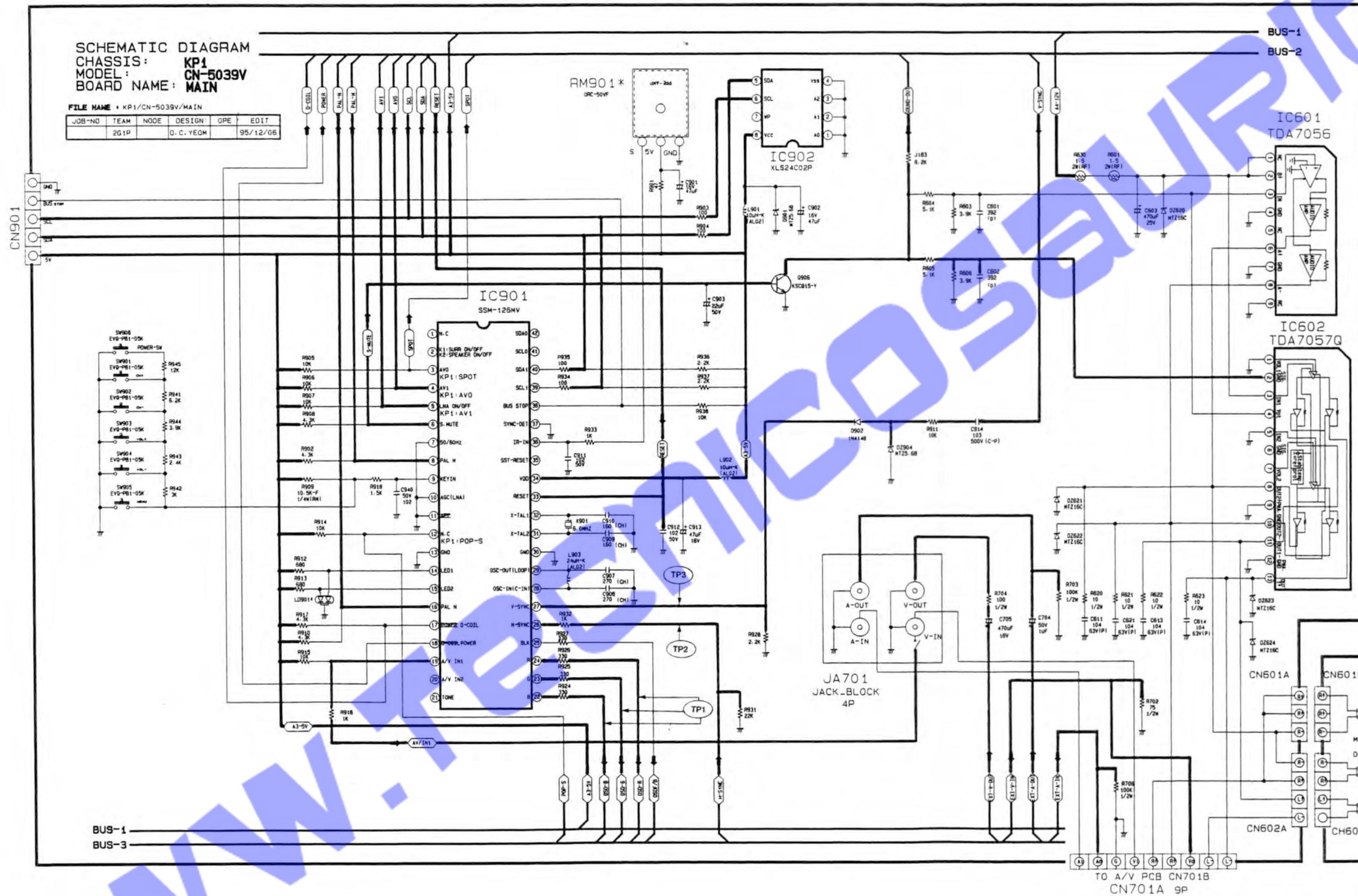


## 11. Schematic Diagrams

## 11-1 MAIN(1/4)



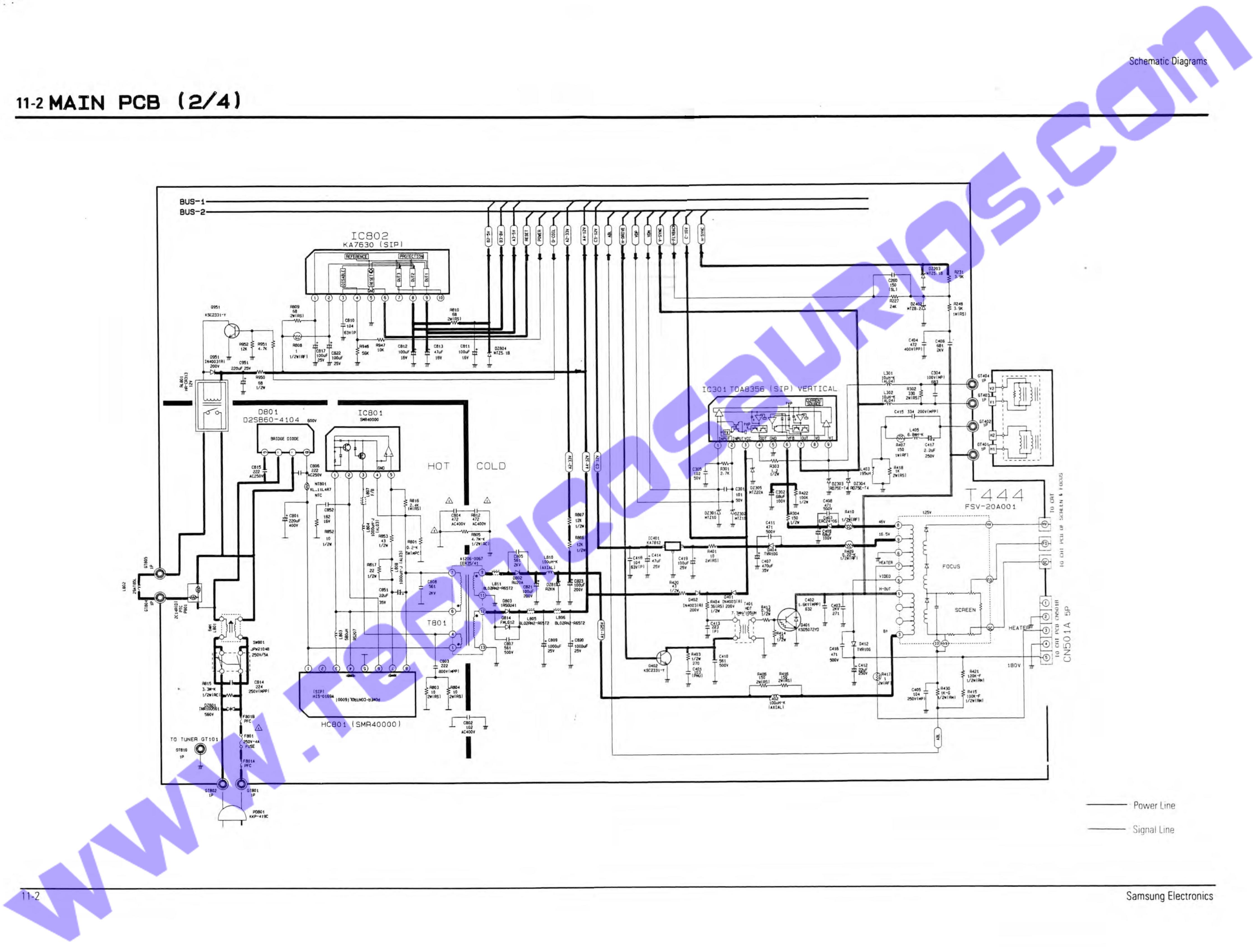


11-2 MAIN PCB (2/4)

Schematic Diagrams

11-2

Samsung Electronics



11-2 MAIN PCB (2/4)

Schematic Diagrams

11-2

Samsung Electronics

11-2 MAIN PCB (2/4)

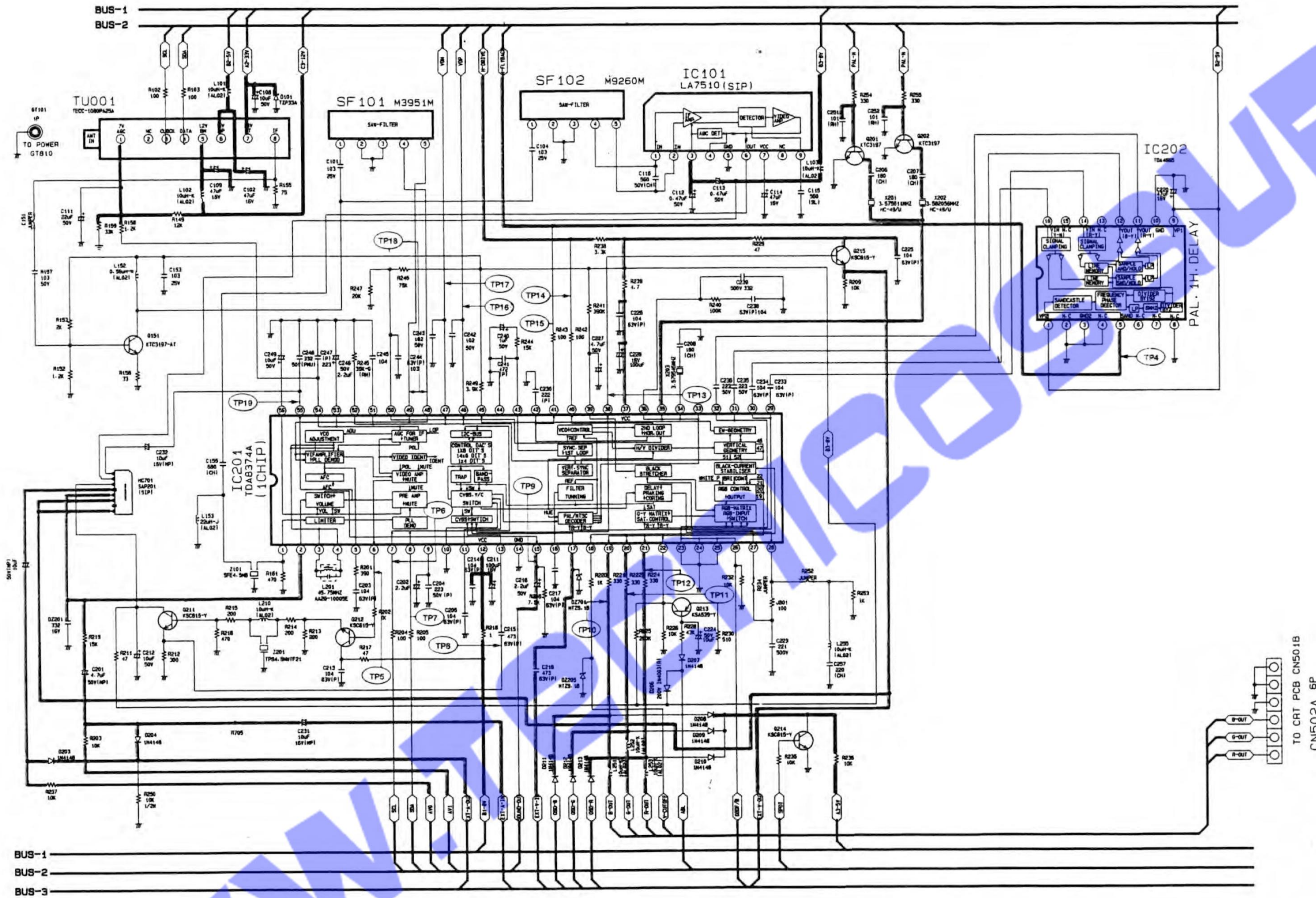
Schematic Diagrams

11-2

Samsung Electronics

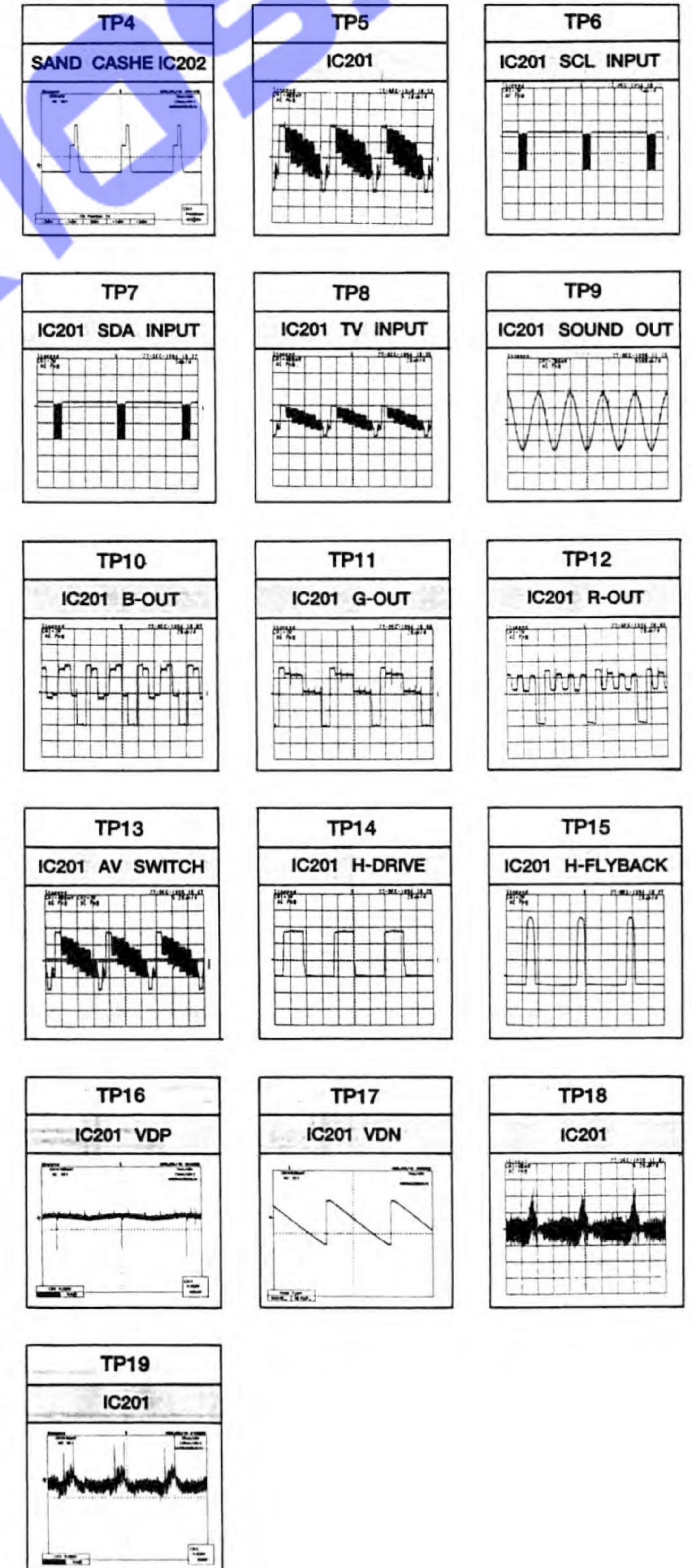


## 11-3 MAIN(3/4)



— : Signal Line

— : Power Line





## 11-4MAIN( 4/4)

## EXPRESSION

- Resistance is shown on K\*1,000 M\*1,000,000
- Unless otherwise noted in schematic all capacitor values less than 1 are expressed in  $\mu$ F, the values more than 1 in pF.
- Unless otherwise noted in schematic all inductor values are expressed in  $\mu$ H and the values less than 1 in mH.

## NOTE

The circuits are subject to change without notice to improve the picture quality.

WARNING : THIS RECEIVER CONTAINS SAFETY CRITICAL COMPONENTS. ALL PARTS SHOWN IN THE SHADED AREAS OF THE SCHEMATIC ARE SAFETY CRITICAL FOR CONTINUED SAFETY. REPLACE SAFETY CRITICAL COMPONENTS ONLY WITH MANUFACTURER'S RECOMMENDED PARTS. REFER TO PARTS LIST FOR EXACT REPLACEMENTS.

CAPACITOR	
Ceramic - SL	NO MARK
Ceramic - RH	(RH)
Ceramic - CH	(CH)
Polyester (Induct)	(P)
Polyester (Noninduct)	(PN)
Polypropylene	(PP)
Metal Polyester	(MP)
M. P. Polypropylene	(MPP)
Tantalum	(T)
Non Polar	(NP)

RESISTOR	
Carbon	NO MARK
Composition	(RC)
Metal Oxide	(RS)
Metal Film	(RM)
Fusible	(RF)
Cement Wire	(RW)
Network	(RN)
METAL PLATE CEMENT	MPC
HIGH RIPPLE	HR

