

Service Manual

MICRO COMPONENT SYSTEM

TR-951AUB



CONTENTS

1.PRODUCT SPECIFICATION.....	1~3
2.SCHEMATIC DIAGRAM.....	4
3.PCB DRAWING.....	5~6
4.MPEG DRAWING.....	7~11
5.EXPLODED VIEW.....	12
6.BOM LIST.....	13~20

SPECIFICATIONS

MODEL NUMBER TR-951AUB

DATE 2007/12/28

TEST CONDITION:

1.POWER SUPPLY VOLTAGE:AC220 V, 50 HZ

2.STANDARD MODULATION:1000HZ,30%MOD

3.REFERENCE OUTPUT:50mw

4.RESISTIVE LOAD:4 OHM

AM FM MAX OUTPUT POWER

NO.	TEST ITEMS	FREQ/TAPE	UNIT	NORMAL	LIMIT	DATA
1	FRERQUENCY RANGE		KHz	520	+/-15	
			KHz	1630	+/-20	
2	INTERMEDIATE FREQUENCY		KHz	455	+/-5	
3	DIAL DEVIATION	600KHz	KHz	/	/	
		1000KHz	KHz	/	/	
		1400KHz	KHz	/	/	
4	MAX SENSITIVITY	600KHz	dB/M	50	60	
		1000KHz	dB/M	50	60	
		1400KHz	dB/M	50	60	
5	USEADLE SENSITIVITY 20dB S/N	600KHz	dB/M	55	68	
		1000KHz	dB/M	55	68	
		1400KHz	dB/M	55	68	
6	S/N RATIO @5mV	1000KHz	dB	35	30	
8	ACA 10KHz	1000KHz	dB	20	10	
9	IF REJECTION	600KHz	dB	39	30	
		1000KHz	dB			
		1400KHz	dB			
10	IMAGE REJECTION	1400KHz	dB	35	25	
11	A .G .C figur of merit @ 100mV	1000KHz	dB	38	30	
12	OVERLOAD DISTORTION@100mV 80% MOD	1000KHz	%	4	8	
13	DISTORTION 30% MOD 74dB INPUT	1000KHz	%	2	6	
14	HUM/NOISE OUTPUT @VOL.MIN	1000KHz	mV	4	8	
15	FEDELITY-6dB @5AMV		Hz	80-3000	150-2200	
17	WHISTLE(5mV/M) @2ND	KHz	%	/	/	
	@3RD	KHz	%	/	/	
18	VR.MAX.DISTORTION		%		25	
16	POWER OUTPUT@10% T.H.D	1000KHz	W	2.8	2.5	
19	MAX OUTPUT POWER	1000KHz	W			

SPECIFICATIONS

MODEL NUMBER TR-951AUB

DATE 2007/12/28

TEST CONDITION:

1.POWER SUPPLY VOLTAGE:AC220 V, 50 HZ

2.STANDARD MODULATION:1000HZ,22.5KHz Deviation(MPX75KHz DEV)

3.REFERENCE OUTPUT:50mw

4.RESISTIVE LOAD:4 OHM

5.L+R=45%, L-R=45%, PILOT=10%

FM

NO.	TEST ITEMS	FREQ	UNIT	NORMAL	LIMIT	DATA
1	TUNING RANGE		MHz	87.5	+/-0.5	
			MHz	108.5	+/-0.5	
2	INTERMEDIATE FREQUENCY		MHz	10.7	+/-0.3	
3	DIAL CALIBRATION	88MHz	KHz	/	/	
		100MHz	KHz	/	/	
		106MHz	KHz	/	/	
4	MAX SENSITIVITY	90MHz	dB	15	24	
		98MHz	dB	15	24	
		106MHz	dB	15	24	
5	USEADLE SENSITIVITY 30dB S/N	90MHz	dB	20	26	
		98MHz	dB	19	26	
		106MHz	dB	19	26	
6	S/N RATIO @1mV	98MHz	dB	38	30	
7	HUM MODULATION 100dB INPUT	98MHz	dB	/	/	
8	(-3dB)LIMITING SENSITIVITY	98MHz	dB	24	30	
9	AFC HOLDING RANGE -3dB	98MHz	KHz	/	/	
10	IF REJECTION	90MHz	dB	55	40	
11	IMAGE REJECTION	106MHz	dB	28	20	
12	AM SUPPRESSION AT 60dB INPUT	98MHz	dB	38	30	
13	OVERLOAD CAPACITY 75KHz DEV	98MHz	dB		/	
14	T.H.D.22.5KHz AT 60dB INPUT	98MHz	%	1	3	
15	HUM/NOISE OUTPUT @VOL.MIN.		mV	5	10	
16	FREQ.RESPONSE -6dB 50us PRE-AMP		Hz	80-5.5K	150-3K	
17	SEPARATION 100Hz		dB	/	/	
	1KHz		dB	30	22	
	10KHz		dB	/	/	
18	POW OUTPUT @ 10% T.H.D	98MHz	W	2.8	2.5	
19	MAX OUTPUT POWER	98MHz	W			
20	STEREO INDICATOR SENSITIVITY		dB	18	30	

SPECIFICATIONS

MODEL NUMBER TR-951AUB

DATE 2007/12/28

TEST CONDITION:

1.POWER SUPPLY VOLTAGE:AC 220 V, 50 HZ

2.STANDARD MODULATION:

3.REFERENCE OUTPUT:50mw

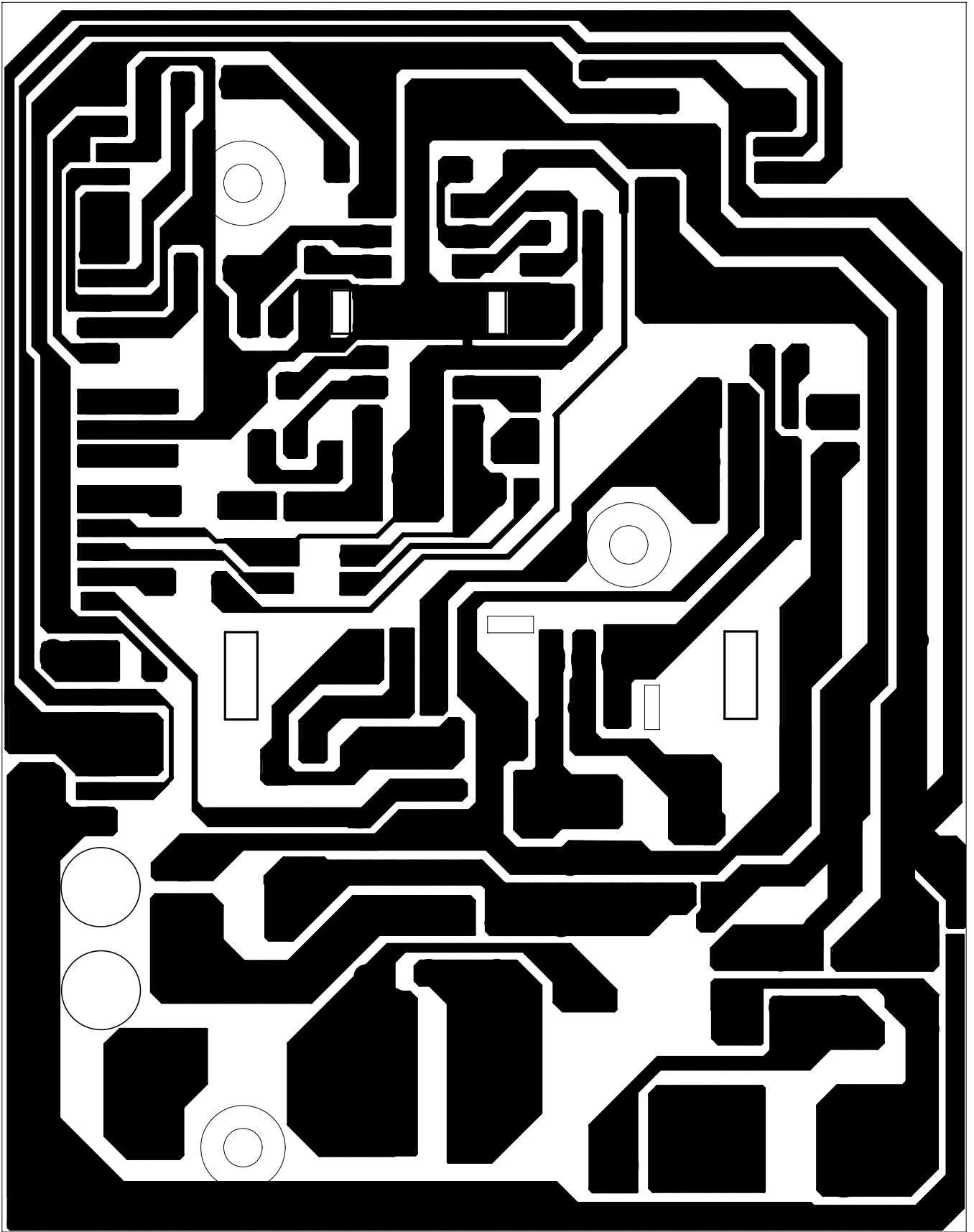
4.RESISTIVE LOAD:4 OHM

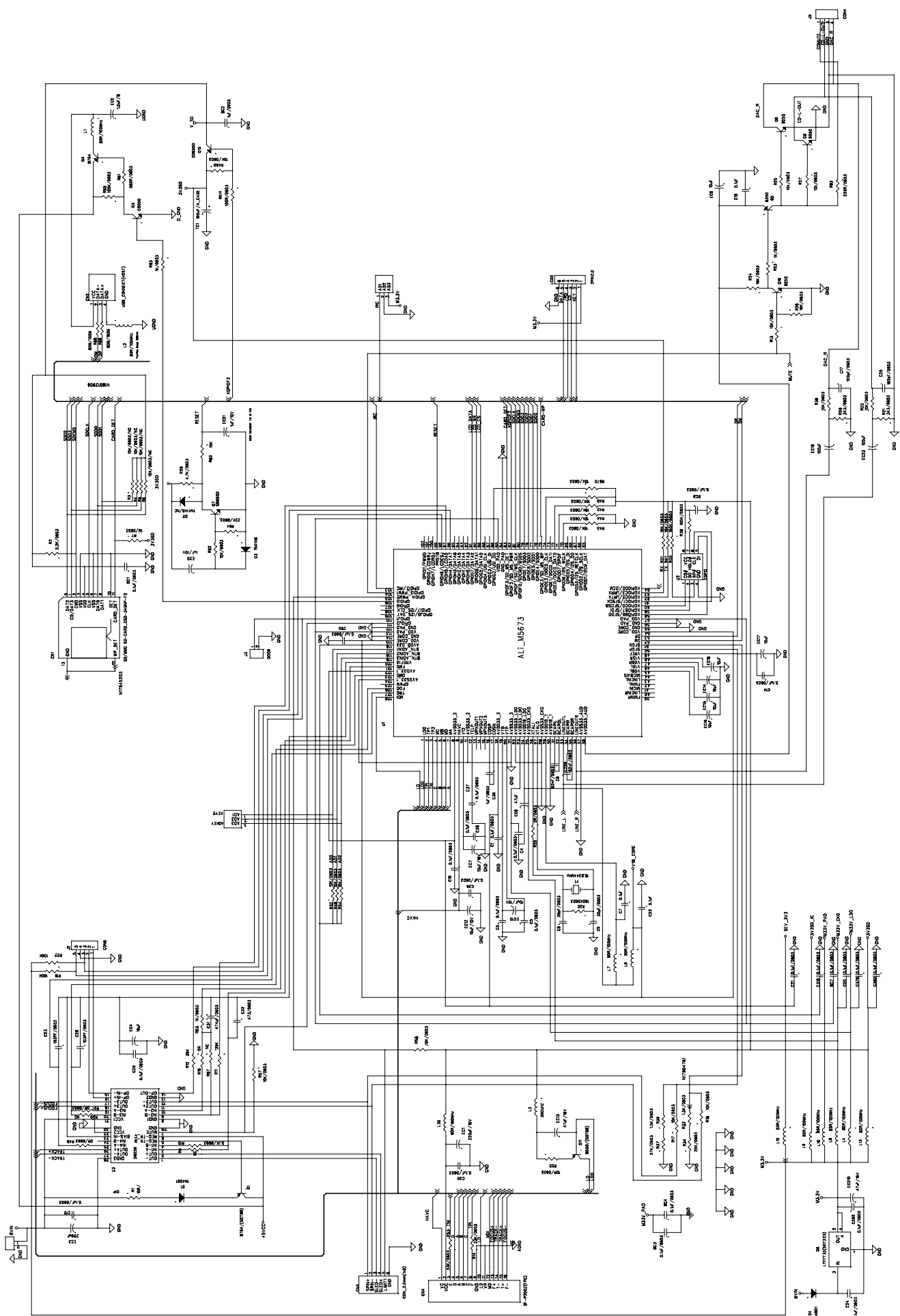
CD/MP3

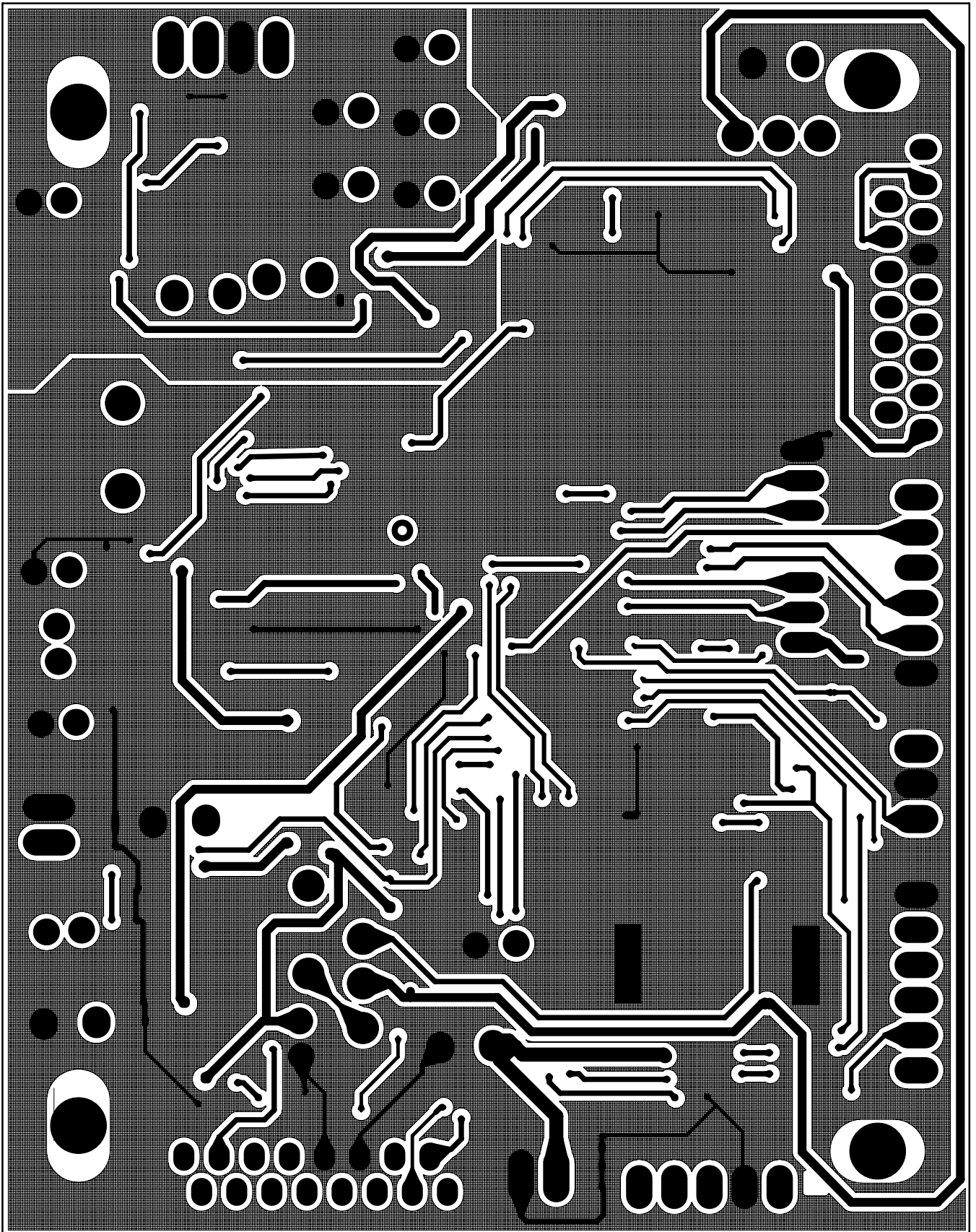
NO.	TEST ITEMS	TAPE	UNIT	NORMAL	LIMIT	DATA
1	S/N RATIO(WITH JIS-A) TCD-784	1KHZ	dB	50	45	
2	CHANNEL SEPARATION TCD-784	1KHZ	dB	35	30	
3	CHANNEL BALANCE TCD-784	1KHZ	dB	±/-1	±/-3	
4	DISTORTION TCD-784	1KHZ	%	1	3	
5	VR.MAX.DISTORTION(2首) TCD-784		%	20	25	
6	10% THD OUTPUT POWER	TCD-784	W	2.8	2.5	
7	MAXIMUM OUTPUT POWER	TCD-784	W			
8	DYNAMIC RANGE	1KHZ	dB	/	/	
9	CD IN FREQUENCY RESPONSE 1K=0dB	1KHZ	dB	0	0	
		20Hz	dB	/	/	
		100HZ	dB	0	±/-6	
		10K	dB	0	±/-6	
		20K	dB	/	/	
10	FF/FB MUTE LEVEL	1KHZ	dB	15	10	
11	HUN & NOISE VOL.MIN		mV	1	5	
	VOL.MAX		mV	5	10	
12	INTERRUPTION WITHOUT NOISE	SBC-444A	um	800	700	
13	BLACK DOT WITHOUT NOISE	SBC-444A	um	600	600	
14	FINGERPRINT WITHOUT NOISE	SBC-444A	um	65	65	
15	ECCENTERICITY WITHOUT NOISE	TCD-712	um		140 (±/-15)	
16	ACCESSS OPERATION TIME	PHILIPS NR5A	SEC	3	5	
		PHILIPS NR5A	SEC	7	10	
17	AUDIO BALANCE FM 60dB/M INPUT	75KHZ DEV	dB	0	±/-5	
	AM 74dB/M INPUT	80% MOD	dB	0	±/-5	
	TAPE PLAY(MTT-112BN 0dB)		dB	0	0	
	CD.PLAY(TCD 784 1KHZ 0dB)		dB	0	±/-5	
	RECOR/PLAY BACK(FM 1KHZ I/P)	75KHZ DEV	dB	0	±/-5	
18	BASS BOOST EFFECT<BASS BOOST FROM OFF TO NO>	100Hz	dB	8	6	

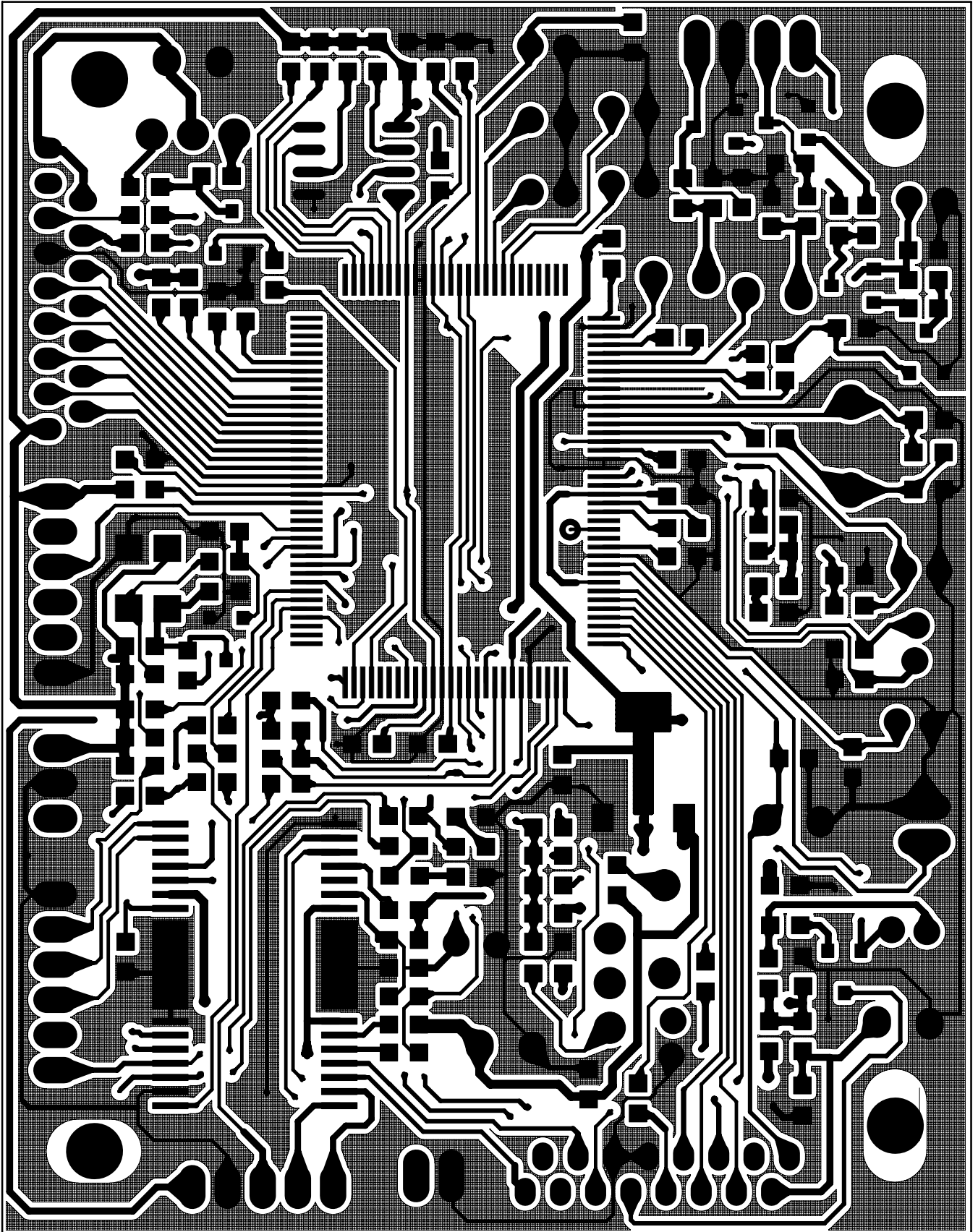


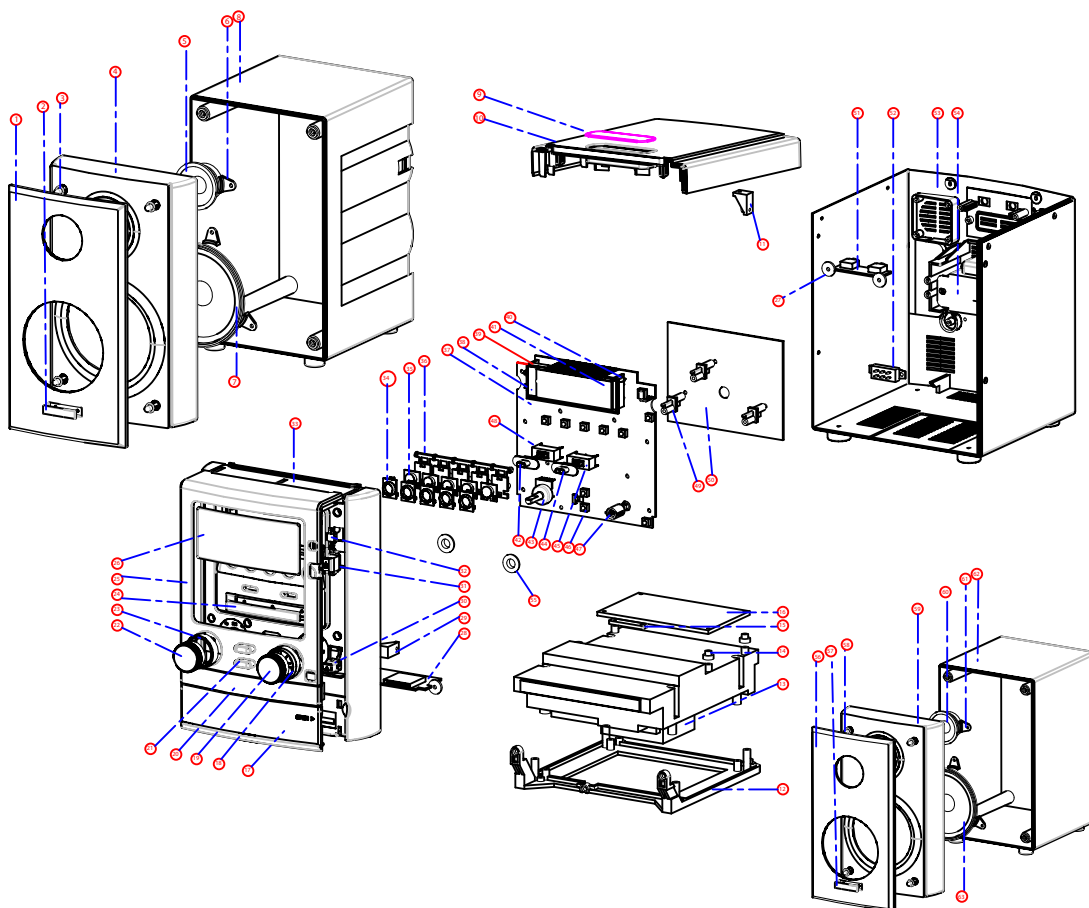




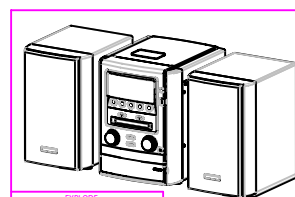








ID	NAME		
1	SPEAKER COVER-L	35	CD-KNOB-02
2	SCUTCHION-L	36	CD-KNOB-BRACKET
3	FIX THE SUPPORT -L	37	MAIN-PCB
4	SPEAKER FRONT CABLE-L	38	LIGHT-PLATE
5	SPEAKER-R-L	39	LED-BRACKET
6	SPEAKER CLAMP-L	40	ST-LED
7	SPEAKER-R-L	41	LED
8	SPEAKER BACK CABLE-L	42	FUNCTION-KNOB
9	POD-LENS	43	PSL
10	TOP-CAB	44	BAND-KNOB
11	TOP-BRACKET	45	SW-BANDS
12	CD-CORE-BRACKET	46	ETCH-SW
13	CD-CORE	47	VC-KNOB-BRACKET
14	PCB-BRACKET-B	48	SW-FUNCTIONAL
15	PCB-BRACKET-A	49	PCB-BRACKET
16	MP3-PCB	50	POWER-PCB
17	USB-DOOR	51	OUT-PCB
18	VC-KNOB-ADORNMENT	52	SW1110/220
19	VC-KNOB	53	BACK-CAB
20	CD-CORNER	54	TRANSFORMER
21	CD-KNOB-01	55	RUBBER-TURN
22	MR-KNOB	56	SPEAKER COVER-R
23	MR-KNOB-ADORNMENT	57	SCUTCHION-R
24	FRONT-CAB-ADORNMENT	58	FIX THE SUPPORT -R
25	FRONT-CAB COVER	59	SPEAKER FRONT CABLE-R
26	CD-DISPLAY-LENS	60	SPEAKER-R-R
27	PLASTIC-PCB	61	SPEAKER CLAMP-R
28	USB-DO-PCB	62	SPEAKER BACK CABLE-R
29	FRONT-BRACKET	63	SPEAKER-R-R
30	OPEN-KNOB		
31	POWER-R-KNOB		
32	RECEIVE-LENS		
33	FRONT-CAB		
34	CD-KNOB-ADORNMENT		



Item No	Part Description	specification	unit	QTY
TR-951AUB CD PCB part				
TR-951AUB output pc				
. . M01-302-MP327/USB	MP3-27/USB output pcb		pcs	1
. . . P02-035-0328	P. C. B	CD27-POWER-B1-02 80*102*1.6MM output pcb	pcs	1
. . . P02-001-0001	Resistor	1/8W 1 Ohm	pcs	1
. . . P02-001-0153	Resistor	1/8W 180 OHM	pcs	2
. . . P02-001-0010	Resistor	1/8W 330 Ohm	pcs	1
. . . P02-001-0050	Resistor	1/8W 1 K Ohm	pcs	2
. . . P02-001-0018	Resistor	1/8W 10 K Ohm	pcs	2
. . . P02-004-0014	Ceramic capacitor	203PF	pcs	4
. . . P02-004-0015	Ceramic capacitor	403PF	pcs	2
. . . P02-004-0010	Ceramic capacitor	102PF	pcs	2
. . . P02-002-0001	Elect. Capacitor	0.47uF 50V (5*11MM)	pcs	2
. . . P02-011-0060	IC	TA8227/YD8227	pcs	1
. . . P02-002-0003	Elect. Capacitor	1uF 50V (4*7MM)	pcs	2
. . . P02-043-0002	PAPER EYE	2*4MM	pcs	2
. . . P02-002-0064	Elect. Capacitor	100UF 16V (5*7MM)	pcs	7
. . . P02-002-0010	Elect. Capacitor	220uF 25V (8*12MM)	pcs	1
. . . P02-002-0084	Elect. Capacitor	470UF 10V (6*11MM)	pcs	2
. . . P02-004-0016	Ceramic capacitor	104PF	pcs	1
. . . P02-002-0020	Elect. Capacitor	2200uF 25V (13*21MM)	pcs	1
. . . P02-002-0006	Elect. Capacitor	47uF 16V (4*7MM)	pcs	2
. . . P02-001-0013	Resistor	1/8W 2.2 K Ohm	pcs	1
. . . P02-001-0014	Resistor	1/8W 3.3 K Ohm	pcs	1
. . . P02-010-0009	diode	1N5392	pcs	4
. . . P02-001-0076	Resistor	1/8W 390 Ohm	pcs	1
. . . P02-001-0032	Resistor	1/4W 100 Ohm	pcs	1
. . . P02-010-0002	constant voltage diode	5.6V 1/2W "B" $\pm 0.2V$	pcs	1
. . . P02-032-0001	SOCKET	2PIN 2.00MM vertical	pcs	1
. . . P02-004-0020	Ceramic capacitor	222PF	pcs	2
. . . P02-086-0004	copper wire	dia 0.5*5MM	pcs	2
. . . P02-086-0003	copper wire	dia 0.5*7.5MM	pcs	2
. . . P02-086-0002	copper wire	dia 0.5*10MM	pcs	1
. . . P02-008-0001	inductance	15UH 4*6MM	pcs	2
. . . P02-010-0003	constant voltage diode	8.2V 1/2W "C" $\pm 0.5V$	pcs	1
. . . P02-016-0010	transistor	D882 NPN 2A	pcs	2
. . . P02-032-0003	SOCKET	3PIN 2.00MM vertical	pcs	2
. . . P02-032-0009	SOCKET	4PIN 2.00MM vertical	pcs	1
. . . P02-032-0007	SOCKET	5PIN 2.00MM vertical	pcs	1
. . . P02-032-0035	SOCKET	10PIN 2.0MM vertical	pcs	1
TR-951AUB M5673 main pcb				
. . M01-303-MP327/USB	MP3-27/USB main pcb	double pcb	pcs	1
. . . P02-043-0002	PAPER EYE	2*4MM	pcs	1
. . . P02-011-0003	IC	SP2111N/D2111/YD2111N	pcs	1
. . . P02-011-0004	banding IC	SC3610D	pcs	1
. . . P02-001-0016	Resistor	1/8W 5.6 K Ohm	pcs	1
. . . P02-001-0020	Resistor	1/8W 22 K Ohm	pcs	1
. . . P02-001-0058	Resistor	1/4W 4.7 Ohm	pcs	1
. . . P02-001-0013	Resistor	1/8W 2.2 K Ohm	pcs	3
. . . P02-001-0135	Resistor	1/8W 2.7 K	pcs	2

. . . P02-001-0018	Resistor	1/8W 10 K Ohm	pcs	24
. . . P02-001-0021	Resistor	1/8W 39 K Ohm	pcs	1
. . . P02-001-0109	Resistor	1/8W 47 K	pcs	4
. . . P02-001-0023	Resistor	1/8W 100 K Ohm	pcs	5
. . . P02-011-0094	banding IC	LCD driving IC ET1621 26P 20*10MM	pcs	1
. . . P02-004-0002	Ceramic capacitor	5PF NPO	pcs	2
. . . P02-004-0019	Ceramic capacitor	15PF	pcs	1
. . . P02-004-0003	Ceramic capacitor	18PF NPO	pcs	1
. . . P02-004-0004	Ceramic capacitor	22PF NPO±5%	pcs	1
. . . P02-004-0005	Ceramic capacitor	30PF	pcs	7
. . . P02-004-0010	Ceramic capacitor	102PF	pcs	1
. . . P02-004-0008	Ceramic capacitor	150PF	pcs	1
. . . P02-004-0039	Ceramic capacitor	180PF	pcs	1
. . . P02-004-0020	Ceramic capacitor	222PF	pcs	2
. . . P02-016-0005	transistor	B772 PNP	pcs	1
. . . P02-004-0013	Ceramic capacitor	153PF	pcs	2
. . . P02-004-0015	Ceramic capacitor	403PF	pcs	2
. . . P02-004-0034	Ceramic capacitor	683PF	pcs	2
. . . P02-004-0016	Ceramic capacitor	104PF	pcs	19
. . . P02-002-0001	Elect. Capacitor	0.47uF 50V (5*11MM)	pcs	1
. . . P02-002-0002	Elect. Capacitor	1uF 50V (5*11MM)	pcs	8
. . . P02-002-0004	Elect. Capacitor	4.7uF 50V (5*11MM)	pcs	3
. . . P02-002-0007	Elect. Capacitor	47uF 16V (5*11MM)	pcs	4
. . . P02-002-0017	Elect. Capacitor	100UF 16V (5*11MM)	pcs	10
. . . P02-016-0003	transistor	S8050D (EBC) NPN	pcs	3
. . . P02-005-0001	FM Ceramic FILTER	L10.7A (MHZ) 3LEG	pcs	1
. . . P02-005-0002	AM Ceramic FILTER	455B (KHZ) 3LEG	pcs	1
. . . P02-007-0001	I.F.I	157:15TYELLOW) DIA 7MM (7*7*11)	pcs	1
. . . P02-007-0006	I.F.I	(PINK) 7T DIA7MM (7*7*11MM)	pcs	1
. . . P02-007-0017	I.F.I #CD55N	RED 110:10T DIA. (7*7*6MM)	pcs	1
. . . P02-006-0001	Oscillator	32.768Mhz (2LEADS) 3*8MM	pcs	1
. . . P02-009-0013	FM COIL	DIA. 5.0*4 1/2T (0.8MM)	pcs	1
. . . P02-009-0012	FM COIL	DIA. 5.0*3 1/2T (0.8MM)	pcs	1
. . . P02-086-0004	copper wire	DIA. 0.5*5MM	pcs	8
. . . P02-016-0002	TRANSISTOR	S9014C NPN	pcs	10
. . . P02-086-0003	copper wire	DIA. 0.5*7.5MM	pcs	10
. . . P02-086-0002	copper wire	DIA. 0.5*10MM	pcs	7
. . . P02-086-0001	copper wire	DIA. 0.5*12.5MM	pcs	2
. . . P02-086-0005	copper wire	DIA. 0.5*15MM	pcs	1
. . . P02-004-0007	Ceramic capacitor	100PF	pcs	1
. . . P02-002-0024	Elect. Capacitor	22uF 16V (5*11MM)	pcs	1
. . . P02-032-0004	SOCKET	3PIN 2.00MM BOW	pcs	1
. . . P02-004-0021	Ceramic capacitor	20PF NPO	pcs	1
. . . P02-004-0001	Ceramic capacitor	2PF NPO	pcs	1
. . . P02-016-0004	TRANSISTOR	9018H NPN	pcs	2
. . . P02-001-0146	Resistor	1/8W 1.8 K	pcs	2
. . . P02-002-0027	Elect. Capacitor	470uF 16V (8*12MM)	pcs	1
. . . P02-001-0014	Resistor	1/8W 3.3 K Ohm	pcs	1
. . . P02-086-0010	constant voltage diode	DIA. 0.5*6MM	pcs	1
P02-010-0019	constant voltage diode	3.6V 1/2W "B" ±0.2V	pcs	1
P02-010-0008	constant voltage diode	4.7V 1/2W "B" ±0.2V	pcs	1

P02-010-0002	constant voltage diode	5.6V 1/2W "B" $\pm 0.2V$	pcs	2
P02-010-0005	TRANSISTOR	IN4148	pcs	10
P02-010-0020	COMMUTE diode	IN4004	pcs	5
. . . P02-009-0001	FM COIL	vertical 4.5*4 1/2T(0.7MM)	pcs	1
. . . P02-009-0003	FM COIL	vertical 4.5*2 1/2T(0.7MM)	pcs	1
. . . P02-009-0002	FM COIL	vertical 4.0*3 1/2T(0.7MM)	pcs	1
P02-008-0001	inductance	15UH 4*6MM	pcs	1
P02-001-0001	Resistor	1/8W 1 Ohm	pcs	1
P02-001-0002	Resistor	1/8W 10 Ohm	pcs	2
P02-001-0003	Resistor	1/8W 22 Ohm	pcs	2
P02-001-0004	Resistor	1/8W 47 Ohm	pcs	2
P02-001-0006	Resistor	1/8W 100 Ohm	pcs	3
P02-001-0010	Resistor	1/8W 330 Ohm	pcs	3
P02-001-0011	Resistor	1/8W 560 Ohm	pcs	4
P02-001-0050	Resistor	1/8W 1 K Ohm	pcs	11
P02-001-0015	Resistor	1/8W 4.7 K Ohm	pcs	8
TR-951AUB USB/SPK/PHONES PCB				
P02-035-0332	P. C. B	CD-27-MAIN-B1-06 178*144*1.6MM USB	pcs	1
P02-008-0006	ring inductance	10UH	pcs	1
P02-032-0042	SD socket	SDC0-09M1-WG40-10	pcs	1
P02-032-0041	USB jack	USB A TYPE 4P	pcs	1
P02-001-0008	Resistor	1/8W 150 Ohm	pcs	2
P02-001-0019	Resistor	1/8W 18 K Ohm	pcs	2
P02-001-0053	Resistor	1/8W 15 K Ohm	pcs	2
P02-002-0002	Elect. Capacitor	1uF 50V(5*11MM)	pcs	2
P02-008-0005	MAGNET inductance	22UH 3.5*3MM 3T5	pcs	2
TR-951AUB M5673 SD CD pcb parts				
P02-008-0008	inductance SMD	BEAD-300Y (PACKAGE 0603)	pcs	10
P02-010-0029	diode SMD	IN4148/SOD-323	pcs	2
P02-002-0006	Elect. Capacitor	47uF 16V(4*7MM)	pcs	3
P02-006-0002	Oscillator	16.93Mhz(2LEADS) 49S	pcs	1
P02-032-0001	SOCKET	2PIN 2.00MM vertical	pcs	2
P02-032-0003	SOCKET	3PIN 2.00MM vertical	pcs	2
P02-032-0007	SOCKET	5PIN 2.00MM vertical	pcs	1
P02-032-0002	SOCKET	6PIN 2.00MM vertical	pcs	2
P02-016-0009	TRANSISTOR	2SB764E -SSH PNP	pcs	2
P02-032-0006	SOCKET	1.0MM PITCH 16 PIN 180 vertical	pcs	1
P02-032-0077	SOCKET	1.0MM PITCH 14 PIN 180 vertical	pcs	1
P02-004-0124	Ceramic capacitor SMD	30PF 0603 $\pm 5\%$	pcs	2
P02-004-0125	Ceramic capacitor SMD	823PF 0603 $\pm 5\%$	pcs	2
P02-002-0064	Elect. Capacitor	100UF 16V (5*7MM)	pcs	3
P02-002-0115	Elect. Capacitor	220UF 16V 6*7MM	pcs	2
P02-004-0126	Ceramic capacitor SMD	474PF 0603 $\pm 5\%$	pcs	1
P02-002-0027	Elect. Capacitor	470uF 16V(8*12MM)	pcs	1
P02-001-0218	Resistor SMD	330K OHM 0603 $\pm 5\%$	pcs	1
P02-010-0020	COMMUTE diode	IN4004	pcs	1
P02-016-0040	transistor SMD	S8050D NPN EBC	pcs	5
P02-016-0041	transistor SMD	S8550D PNP (EBC)	pcs	2
P02-001-0176	Resistor SMD	4.7K 1/10W $\pm 5\%$ 0603	pcs	1
P02-001-0162	Resistor SMD	0 OHM (PACKAGE 0603) $\pm 5\%$	pcs	5
P02-001-0185	Resistor SMD	10 OHM 0603 $\pm 5\%$	pcs	2

P02-001-0205	Resistor SMD	560 ohm 0603 ±5%	pcs	1
P02-001-0188	Resistor SMD	1K OHM 0603 ±5%	pcs	4
P02-001-0165	Resistor SMD	1.5 K OHM (PACKAGE 0603) ±5%	pcs	2
P02-001-0214	Resistor SMD	3.3K OHM 0603 ±5%	pcs	2
P02-001-0189	Resistor SMD	5.1K OHM 0603 ±5%	pcs	1
P02-001-0166	Resistor SMD	10 K OHM (PACKAGE 0603) ±5%	pcs	24
P02-001-0190	Resistor SMD	22K OHM 0603 ±5%	pcs	2
P02-001-0168	Resistor SMD	27 K OHM (PACKAGE 0603) ±5%	pcs	1
P02-001-0191	Resistor SMD	33K OHM 0603 ±5%	pcs	2
P02-001-0199	Resistor SMD	39K OHM 0603 ±5%	pcs	2
P02-001-0169	Resistor SMD	100 K OHM (PACKAGE 0603) ±5%	pcs	6
P02-004-0081	Ceramic capacitor SMD	102PF 0603 ±5%	pcs	2
P02-004-0069	Ceramic capacitor SMD	103/6V ±5% 0603	pcs	2
P02-004-0074	Ceramic capacitor SMD	473PF 0603 ±5%	pcs	1
P02-004-0075	Ceramic capacitor SMD	104PF 0603 ±5%	pcs	25
P02-004-0064	Ceramic capacitor SMD	105/6V±5% 0603	pcs	1
P02-004-0076	Ceramic capacitor SMD	1UF 0603 ±5%	pcs	2
P02-002-0076	Elect. Capacitor	10UF 16V (4*7MM)	pcs	9
TR-951AUB M5673 SD CD pcb parts				
P02-011-0089	IC chip SMD	CYT8117T33 (PACKAGE SOT-223/SE 8117T33/AMS1117/3.3	pcs	1
P02-011-0157	IC chip	M5673(CPU)	set	1
P02-011-0039	IC chip	CD9259/AAT9259/SA9259/KA9259	pcs	1
P02-035-0430	P.C.B board	ALI-M5673-USB-V01 70*55MM CD double pcb	pcs	1
P02-011-0159	IC chip	P10-100GCP/25L1005MC (M5673 27USB/SD Firmware)	pcs	1
TR-951AUB M5673 USB pcb parts				
P02-001-0013	Resistor	1/8W 2.2 K Ohm	pcs	1
P02-001-0023	Resistor	1/8W 100 K Ohm	pcs	1
P02-001-0090	Resistor	1/8W 330 K	pcs	1
P02-001-0025	Resistor	1/8W 1 M Ohm	pcs	1
P02-002-0003	Elect. Capacitor	1uF 50V (4*7MM)	pcs	1
P02-002-0072	Elect. Capacitor	100UF 10V (4*7MM)	pcs	2
P02-016-0015	TRANSISTOR	S8550 EBC PNP	pcs	1
P02-004-0016	Ceramic capacitor	104PF	pcs	1
P02-032-0078	SOCKET	1.0MM PITCH 14 PIN 180 bow)	pcs	1
P02-035-0445	P.C.B board	CD27-USB(5673)-03-B1 74.5X36.3X1.6MM	pcs	1
P02-008-0006	ring inductance	10UH	pcs	2
P02-086-0003	copper wire	DIA. 0.5*7.5MM	pcs	7
TR-951AUB/USB M5673 accessory parts				
. . P02-023-0011	LED LAMP	DIA 5MM WHIE 3V L=19MM	pcs	1
P02-023-0001	LED LAMP	dia. 3MM RED 3V L=30MM	pcs	1
. . P02-028-0218	single grey crossing line	10P 2.0MM L=200MM	pcs	1
. . P02-013-0003	PVC adjustable capacitor	126PF/40PF <DE443DE01-A04>"NCE" (64R)	pcs	1
. . P02-028-0082	single pin color wire	4P 26# 2.0MM L=200MM RED/BLACK/WHITE/ORANGE	pcs	1
. . P02-028-0181	single pin color wire	5P 26# 2.0MM L=250MM RED/YELLOW/GREEN/GREY/BLACK	pcs	1
. . P02-029-0015	PVC wire	26# L=100MM BLACK	pcs	2
. . P02-029-0014	PVC wire	26# L=100MM RED	pcs	2
. . P02-028-0001	SHILDING LINE	3P DIA 1.8MM L=150MM	pcs	1
. . P02-028-0030	single pin color wire	2P 26# 2.0MM L=200MM RED/BLACK	pcs	1
P02-029-0040	PVC wire	20# L=80MM 红色	pcs	1
P02-028-0446	the optical pick-up crossing line	14P FCC 1.0MM L=250MM(反向)	pcs	1

P02-088-0001	RECEIVER LED OF RC	7.6*7.2*5.2MM 5V	pcs	1
. . P02-019-0002	rotating capacitor	0171-2 30/5 B50K #CD10	pcs	1
. . P02-013-0001	PVC adjustable capacitor	DF443DF01-A04"NCE" (AM/FM/2BAND(126/20) PF(88R)	pcs	1
. . P02-015-0003	TOUCHING SWITCH	TACT:6*6*5MM	pcs	9
. . P02-037-0002	AM COIL	120:20T(3+1)4WIRE*100MM DIA 11MM	pcs	1
. . P02-039-0002	THE BRACKET OF AMGNET(ANTENNA)	5*13*20MM FLAT	pcs	1
. . P02-038-0001	AM MAGNET	5*13*55MM(2013#)	pcs	1
. . P02-015-0006	BAND SWITCH	SS43D01 M12 #CD17	pcs	2
P03-053-0007	radiator	uing on #CD11	pcs	1
. . P03-053-0001	radiator(two pole)	78081C(CD360)	pcs	1
. . P02-032-0020	earphone socket	dia:3.5MM STEREO JACK with switch:EJ-3507-202	pcs	1
. . P02-032-0021	earphone jack	Dia 3.5mm	pcs	3
. . P02-022-0057	LCD displaying	75*27*25*1.1MM 28PIN L=25mm 3.3V	pcs	1
. . P02-030-0009	SPEAKER WIRE	W/3.5MM, #24L=1.8M	pcs	2
. . P02-029-0018	PVC wire	26# L=1800MM BLACK	pcs	1
. . P02-028-0006	single pin color wire	2P 26# 2.0MM L=200MM RED/BLACK	pcs	1
. . P02-028-0059	single pin color wire	2P 26# 2.00MM L=100MM RED/BLACK	pcs	1
. . P02-028-0389	DOUBLE COLOR crossing line	6P 28# 2.0MM L=250MM	pcs	1
. . P02-028-0412	DOUBLE COLOR crossing line	5P 26# 2.0MM L=250MM	pcs	1
. . P02-028-0324	single pin shielding wire	3P 2.0MM Ø 1.8MM L=200MM	pcs	2
. . P02-028-0280	single pin shielding wire	3P 2.0MM Ø 1.8 L=260MM	pcs	1
. . P02-028-0178	the optical pick-up crossing line	16P 1.0MM L=200MM	pcs	1
. . P02-028-0294	single grey crossing line	3P PITCH2.00 L=250MM	pcs	1
. . P02-028-0126	single grey crossing line	6P (2.0MM) L=250MM	pcs	1
TR-951AUB ASSEMBLEING parts				
plastic parts . M01-203-MP327/USB				
. . M01-306-CD27	TOP CABINET		pcs	1
P05-070-0001	HIPS plastic	475 grey	kg	0.12
. . M01-307-CD27	BACK CABINET		pcs	1
P05-070-0001	HIPS plastic	475 grey	kg	0.38
. . M01-308-CD27	FRONT CABINET		pcs	1
P05-070-0001	HIPS plastic	475 grey	kg	0.15
. . M01-309-CD27	THE COVER OF FONT CABINET		pcs	1
P05-070-0001	HIPS plastic	475 grey	kg	0.04
. . M01-310-CD27	CD DOOR		pcs	1
P05-070-0001	HIPS plastic	475 grey	kg	0.02
. . M01-311-CD27	USB DOOR		pcs	1
P05-070-0001	HIPS plastic	475 grey	kg	0.01
. . M01-312-CD27	SPEAKER FRANT		pcs	2
P05-070-0001	HIPS plastic	475 grey	kg	0.13
. . M01-313-CD27	THE BRAND OF GRILL		pcs	2
P05-070-0001	HIPS plastic	475 grey	kg	0
. . M01-314-CD27	THE BRACKET OF SPEAKER GRILL		pcs	2
P05-070-0001	HIPS plastic	475 grey	kg	0.06
. . M01-315-CD27	LCD BRACKET		pcs	1
P05-070-0001	HIPS plastic	475 grey	kg	0.01
. . M01-316-CD27	PCB BRACKET B		pcs	2
P05-070-0001	HIPS plastic	475 grey	kg	0
. . M01-317-CD27	PCB BRACKET A		pcs	1
P05-070-0001	HIPS plastic	475 grey	kg	0

. . M01-318-CD27	CD KNOB BRACKET		pcs	1
P05-070-0001	HIPS plastic	475 grey	kg	0
. . M01-319-CD27	CD MECHANISM BRACKET		pcs	1
P05-070-0001	HIPS plastic	475 grey	kg	0.04
. . M01-320-CD27	MAIN BRACKET		pcs	3
P05-070-0001	HIPS plastic	475 grey	kg	0.04
. . M01-321-CD27	CD KNOB-01		pcs	1
P05-072-0002	Gp plastic	GP-33, from taiwan	kg	0
. . M01-322-CD27	LCD LENS		pcs	1
P05-072-0002	Gp plastic	GP-33, from taiwan	kg	0.01
. . M01-323-CD27	CASSETTE LENS		pcs	1
P05-072-0002	Gp plastic	GP-33, from taiwan	kg	0
. . M01-324-CD27	rc receiving lens		pcs	1
P05-070-0001	HIPS plastic	475 grey	kg	0
. . M01-325-CD27	CD KNOB DESCRIPTION RING		pcs	1
P05-069-0001	ABS plastic	black	kg	0
. . M01-326-CD27	VR KNOB DESCRIPTION RING		pcs	1
P05-069-0001	ABS plastic	black	kg	0
. . M01-327-CD27	VC KNOB DESCRIPTION RING		pcs	1
P05-069-0001	ABS plastic	black	kg	0
. . M01-330-CD27	VR KNOB		pcs	1
P05-069-0001	ABS plastic	black	kg	0
. . M01-331-CD27	VC NOB		pcs	1
P05-069-0001	ABS plastic	black	kg	0
. . M01-332-CD27	PVC PRACKET		pcs	1
P05-069-0001	ABS plastic	black	kg	0
. . M01-333-CD27	FUNCTION KNOB		pcs	1
P05-069-0001	ABS plastic	black	kg	0
. . M01-334-CD27	BRAND KNOB		pcs	1
P05-069-0001	ABS plastic	black	kg	0
. . M01-336-CD27	CD KNOB-04		pcs	1
P05-069-0001	ABS plastic	black	kg	0
. . M01-337-CD27	CD DOOR OPENING KNOB		pcs	1
P05-069-0001	ABS plastic	black	kg	0
. . M01-338-CD27	POWER KNOB		pcs	1
P05-069-0001	ABS plastic	black	kg	0
. . M01-336-CD828	background light lens(CD828)		pcs	1
. . . P05-072-0002	Gp plastic	GP-33, from taiwan	kg	0.01
. . M01-347-CD19	the fixed base of grill(CD19)		pcs	8
P05-069-0003	ABS plastic	ABS-757 raw material	kg	0
. . M01-312-CD17	L speaker bottom(CD17)	cancelled if the order using wooden speaker	pcs	1
P05-070-0001	HIPS plastic	475 grey	kg	0.41
. . M01-313-CD17	R speaker bottom(CD17)	cancelled if the order using wooden speaker	pcs	1
P05-070-0001	HIPS plastic	475 grey	kg	0.48
. . M01-306-CD	fixed pion(public tooling)		pcs	10
P05-069-0001	ABS plastic	black	kg	0
. . M01-359-CD21	plasitc pion(CD21)		pcs	7
P05-069-0001	ABS plastic	black	kg	0

. . M01-345-CD17	plastic feet(CD17)		pcs	8
P05-070-0001	HIPS plastic	475 grey	kg	0
. . M01-334-CD838	leading pipe(CD838)		pcs	2
P05-070-0001	HIPS plastic	475 black	kg	0.05
. . M01-313-CD12	fixed bracket (CD12)		pcs	10
P05-070-0001	HIPS plastic	475 grey	kg	0
. . M01-341-CD27	decription sheet		pcs	1
P05-069-0001	ABS plastic	black	kg	0
. . M01-342-CD27	connecting bracket		pcs	1
P05-070-0001	HIPS plastic	475 grey	kg	0
. . M01-340-CD828	VR knob Resistance ring (CD828)	P07-089-0001	pcs	2
P05-069-0001	ABS plastic	black	kg	0
METAL PARTS				
. . P02-030-0008	belting wire	L=40MM	pcs	6
. . P02-012-0018	CD mechanism	sanyo brand	pcs	1
P03-042-0027	screw	3.0*6 PM	pcs	1
P07-080-0018	black wooden speaker(CD18)		pcs	2
P04-063-0005	fliting paper	30*90MM	pcs	1
P07-089-0027	nipple	CE-02	pcs	2
P07-076-0009	rubber	20*10*5MM	pcs	2
P03-042-0019	screw	3.0*8 PWA (P5MM W7MM)	pcs	10
P07-078-0002	paper pion	dia 5*2*0.4	pcs	2
P07-078-0003	paper pion	8*3*0.8MM	pcs	1
P03-042-0029	screw	3.0*18 PA	pcs	8
. . P07-085-0043	grill #CD018	black HF-01-D 180*280MM	pcs	2
P07-078-0004	paper pion	6*2.6*0.8	pcs	2
M01-354-CD27	IPOD lens		pcs	1
P03-042-0105	screw	3.0*20 PWA	pcs	8
. . P02-083-0052	transformer #88MP3	EI-48*23.5(horizontal)input:110/220VAC output:1200MA/10.5VAC	pcs	1
. . P02-015-0005	changing switch	110V/220V	pcs	1
. . P02-025-0008	speaker	3.5 inch/4 OHM/5W/ dia45	pcs	2
. . P02-025-0003	speaker(alt)	1.5 inch/8 Ohm/5W/dia 32	pcs	2
P02-092-0001	magnet ring	T25*15*12MM	pcs	1
P02-092-0002	magnet ring	T16*12*8MM	pcs	2
P03-042-0001	screw	3.0*8 PA	pcs	20
P03-042-0009	screw	3.0*10 PA	pcs	22
P03-042-0011	screw	2.6*4 KM (D=4MM)	pcs	2
P03-042-0005	screw	3.0*6 PA	pcs	2
P03-042-0020	screw	3.0*10 PWA(P5MM W7MM)	pcs	8
P03-042-0086	screw	3*10 KA	pcs	11
P03-042-0008	screw	3.0*12 PWA(P5MM W10MM)	pcs	2
P03-042-0023	screw	3.0*15 PA	pcs	10
P03-042-0015	screw	2.6*5 PM	pcs	1
P03-042-0002	screw	3.0*12 PA	pcs	10
TR-951AUB/USB packing parts				
. . P02-030-0010	AC cable	VDE approved 0.75MM, round pin, brazile standard plug/1.8M	pcs	1
. . P04-058-0058	cartoon box(CD27)	510*500*278MM	pcs	0.5
. . P04-059-0044	giftbox(CD27)	496*243*262MM	pcs	1
. . P04-062-0036	polyfoam #CD-27		pcs	1

. . P07-077-0003	rubber sheet sheet	8.0*8.0*2.0MM	pcs	12
. . P04-056-0001	QC pass label		pcs	1
P04-060-0181	manuals	MP3-27N	pcs	1
. . P04-056-0002	Laser label		pcs	1
. . P04-064-0006	uni/speaker bage	370*480MM	pcs	2
. . P04-064-0001	the ploybag of unit	370*480MM	pcs	1
. . P04-064-0007	the ploybag of speaker line	150*65mm	pcs	2
. . P04-064-0003	ac cable bag	80*300MM	pcs	1
. . P04-064-0004	manual bag	155*250MM	pcs	1
. . P04-089-0005	belt tap	0.05*7*90 CM	pcs	1
. . P04-065-0070	PVC sheet #CD-31/CD27(E)	116.6*32.6*0.3MM	pcs	1
. . P04-065-0071	PVCwheet #CD-27(D)	62.4*29.0MM	pcs	1
M01-100-S5L8020-(USB+SD)	S5L8020-(USB+SD) remote controller		pcs	1
. . P04-062-0039	ployfoam #CD27	238*98*15MM	pcs	2
CD mechanism brakct parts				
P03-042-0001	screw	3.0*8 PA	pcs	3
P03-042-0125	screw	2.5*4.0 PM	pcs	2
M07-049-0001	PCB/plastic pion	dia 12*3*1.6	pcs	2
P03-042-0007	screw	3.0*8 PWA(P5MM W10MM)	pcs	6
P03-042-0126	screw	1.8*5 PWA	pcs	1
P03-042-0124	screw	1.8*8.0 PA	pcs	1
P03-047-0048	spring	dia 12*10.8H	pcs	2
P03-047-0049	spring	dia 2*9.3H	pcs	2
P02-084-0003	magnet	dia 30.4*18.4*5	pcs	1
P07-089-0052	crippter parts	dia 40*4*0.5	pcs	1
P07-089-0051	motor	HRF-500TB-14415(D/6V)	pcs	1
P07-089-0050	motor' belt	dia:30*27*1.5	pcs	1
P07-087-0005	anti-shocking rubber	dia:14*7.2*6	pcs	4
P02-035-0418	P.C.B board	CD-DECK-01-B1 71*18*1.6MM CD mechanism bracket	pcs	1
P02-015-0036	resuming switch	180degree long:8.5MM—9.0MM	pcs	1
P02-032-0014	SOCKET	5PIN 2.00MM bow	pcs	1
M01-201-CD brakcet	tray bracket		pcs	1
M01-202-Cd brakcet	tray		pcs	1
M01-203-CD brakcet	cripper bracket		pcs	1
M01-205-CD brakcet	gear sheet		pcs	1
M01-206-CD brakcet	lens bracket		pcs	1
M01-207-CD brakcet	bottom part of cripper bracket		pcs	1
M01-208-CD brakcet	big serials gears		pcs	1
M01-209-CD brakcet	gear for the belt		pcs	1
M01-210-CD brakcet	gear for motor		pcs	1
M01-211-CD brakcet	small serials gears		pcs	1
P03-042-0009	screw	3.0*10 PA	pcs	2

---end---