

JVC

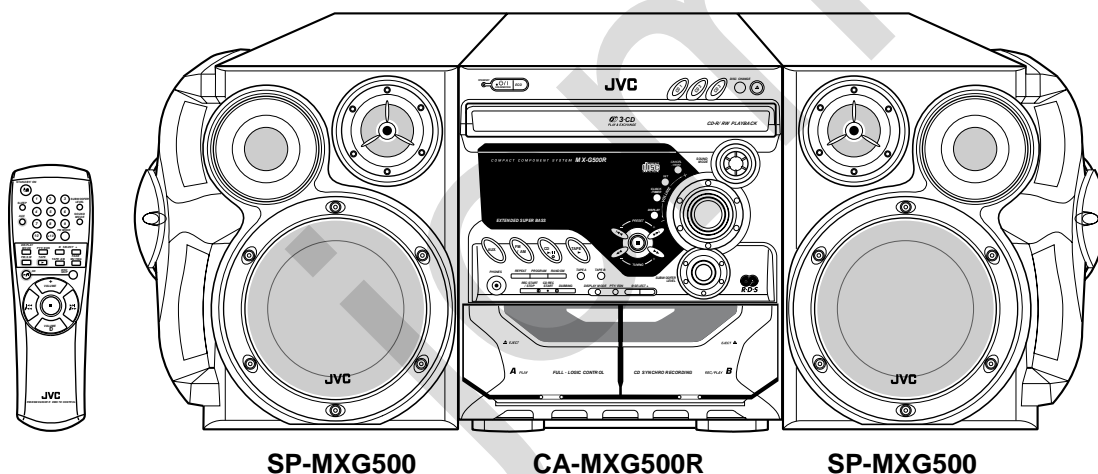
SERVICE MANUAL

COMPACT COMPONENT SYSTEM

MX-G500R

Area suffix

B ----- U.K.
 E ---- Continental Europe
 EN ---- Northern Europe
 EV ----- Eastern Europe



SP-MXG500

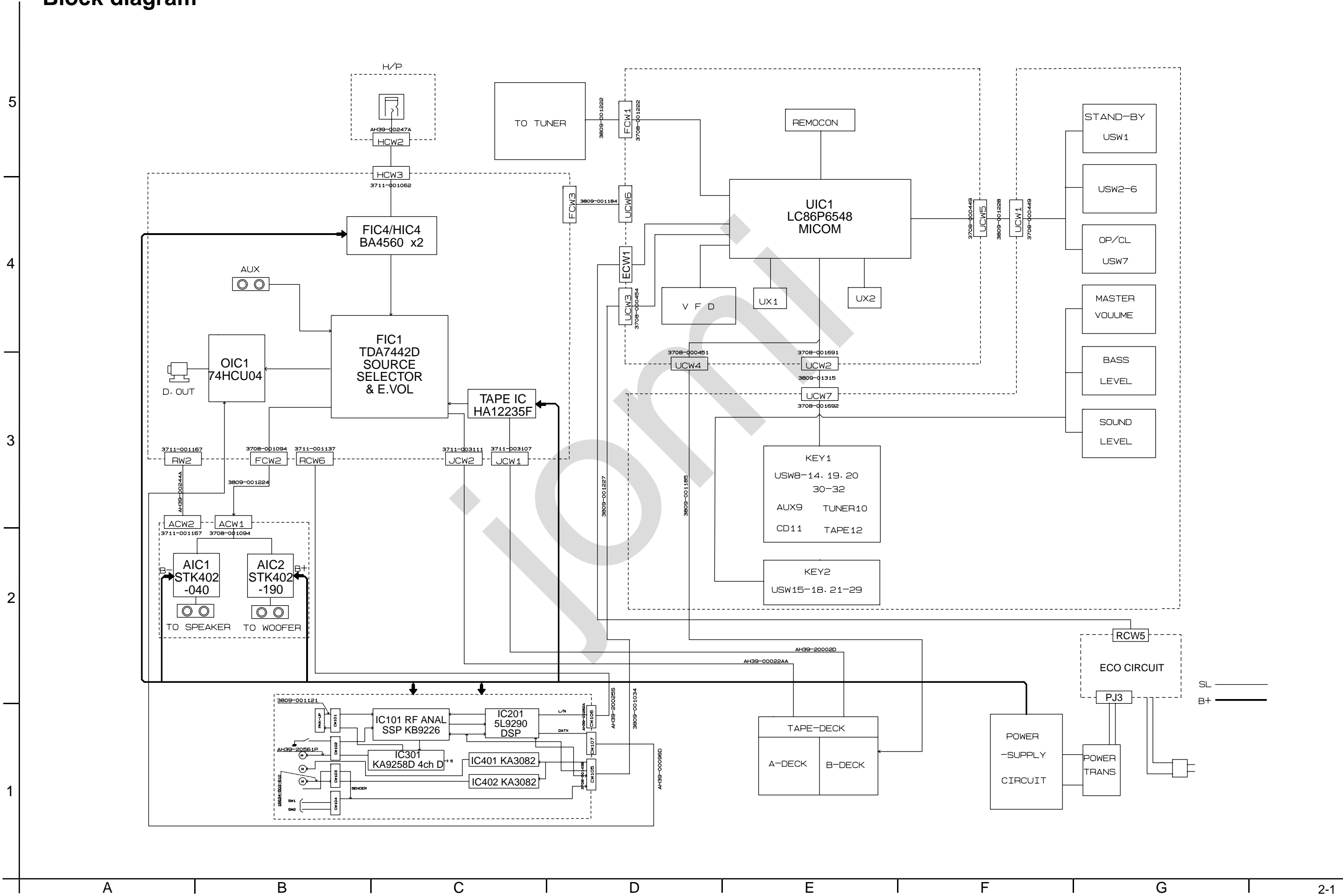
CA-MXG500R

SP-MXG500

Contents

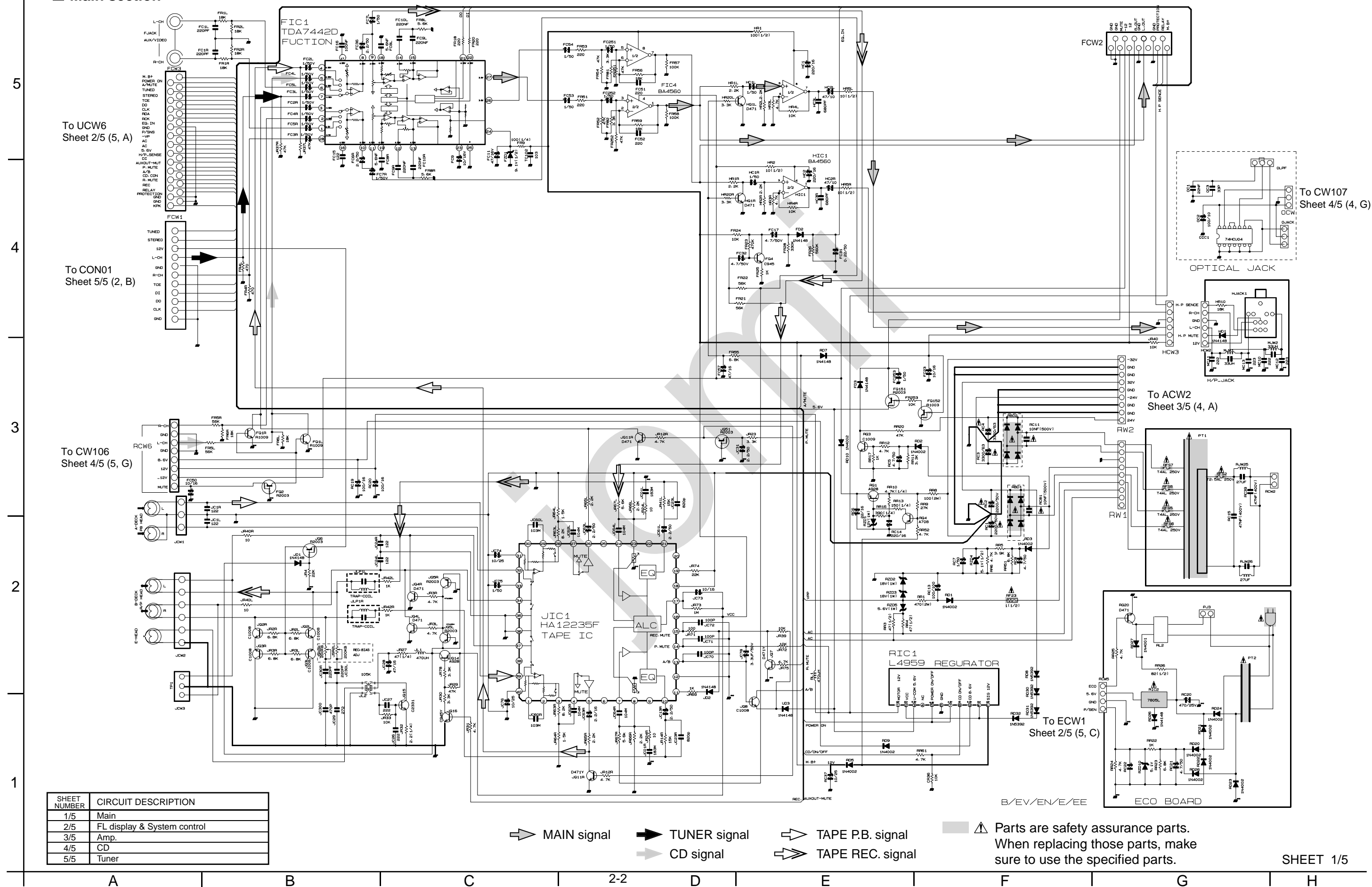
Safety Precautions	1-2	Flow of functional operation	
Important for laser products	1-4	until TOC read	1-24
Preventing static electricity	1-5	Maintenance of laser pickup	1-25
Disassembly method	1-6	Replacement of laser pickup	1-25
Wiring connection	1-19	Trouble shooting	1-26
Adjustment method	1-20	Description of major ICs	1-29~42

Block diagram

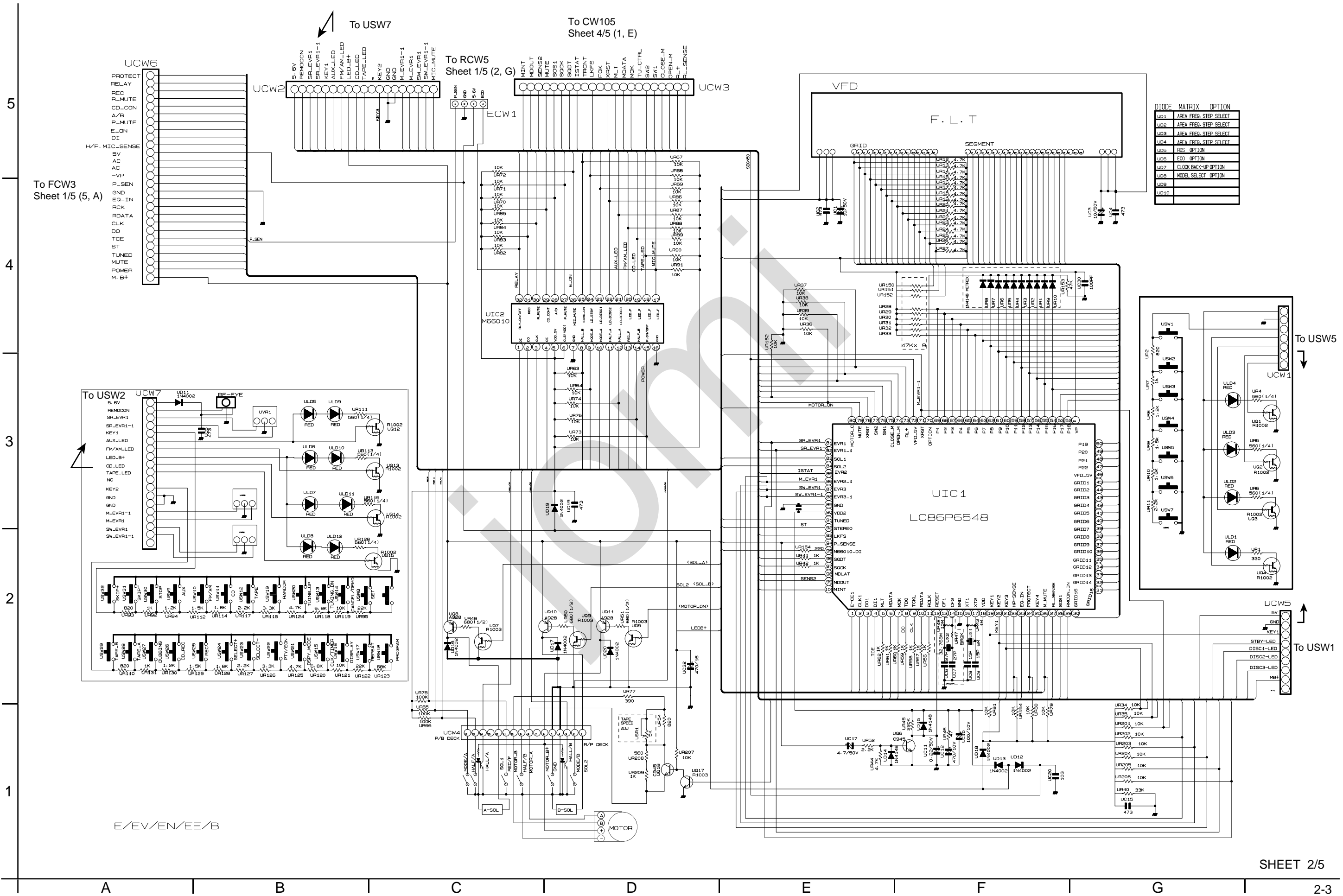


Standard schematic diagrams

■ Main section



FL display & System control section



5

4

3

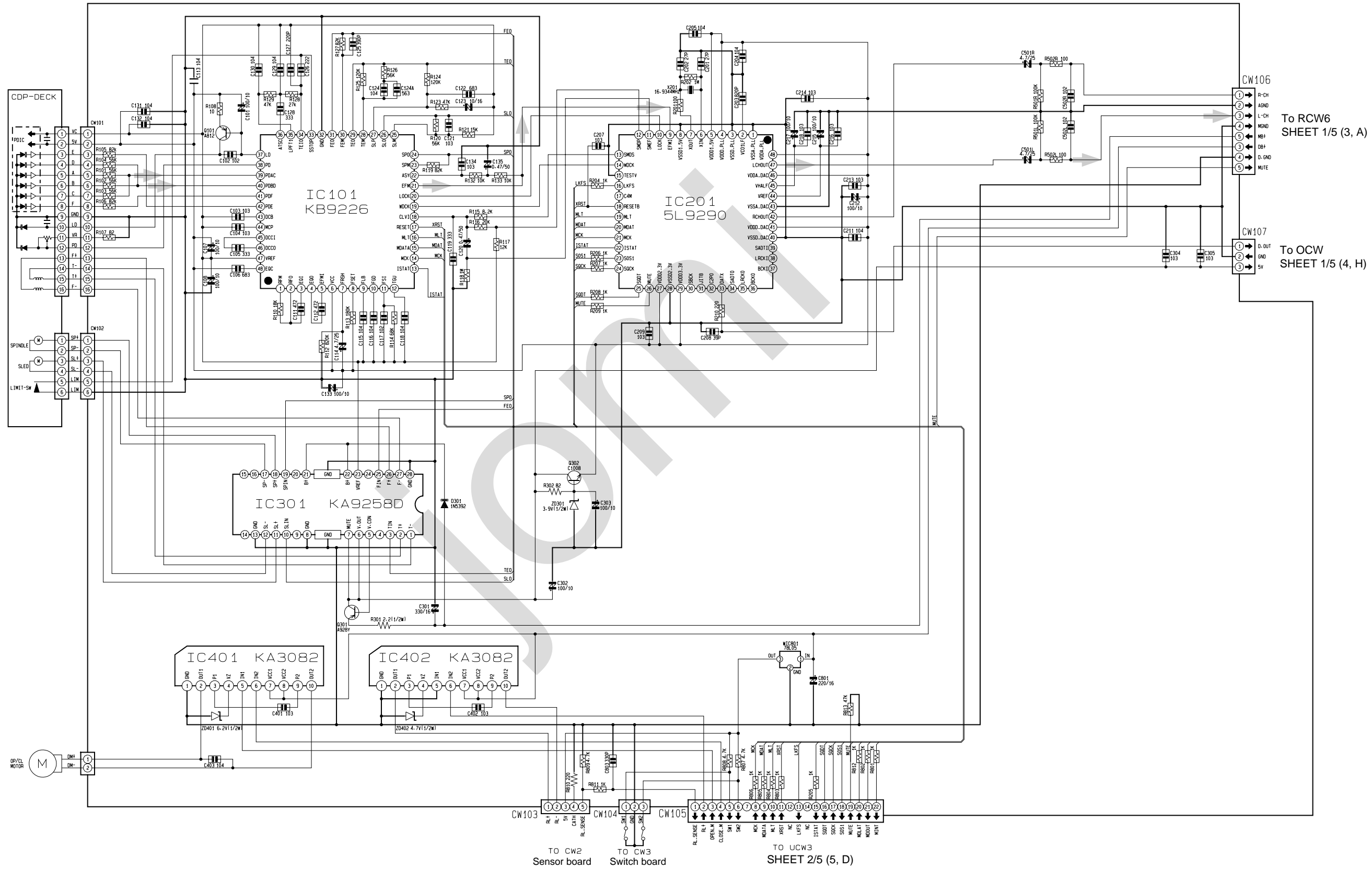
2

1



➔ MAIN signal

CD section



1

