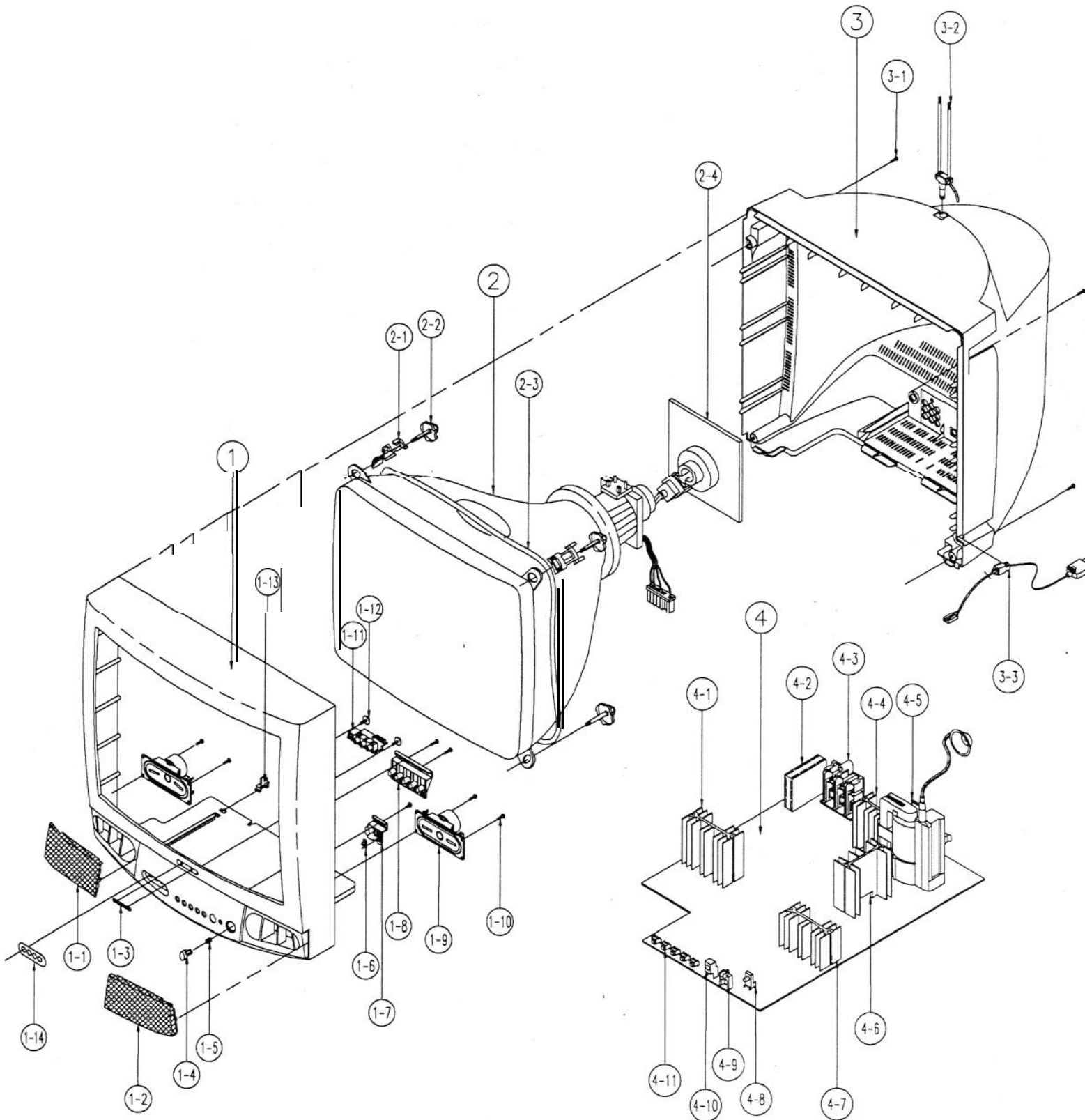
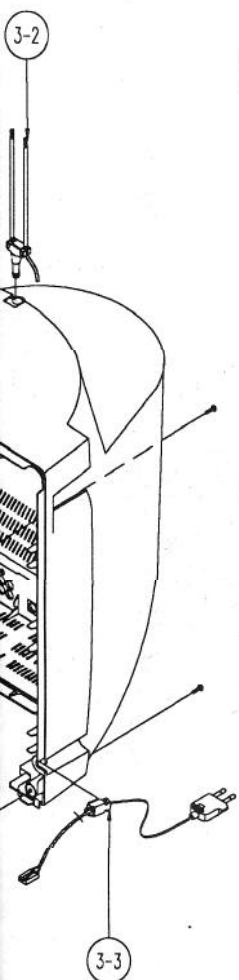


5. Exploded View and Parts list

5-1. CT6846W

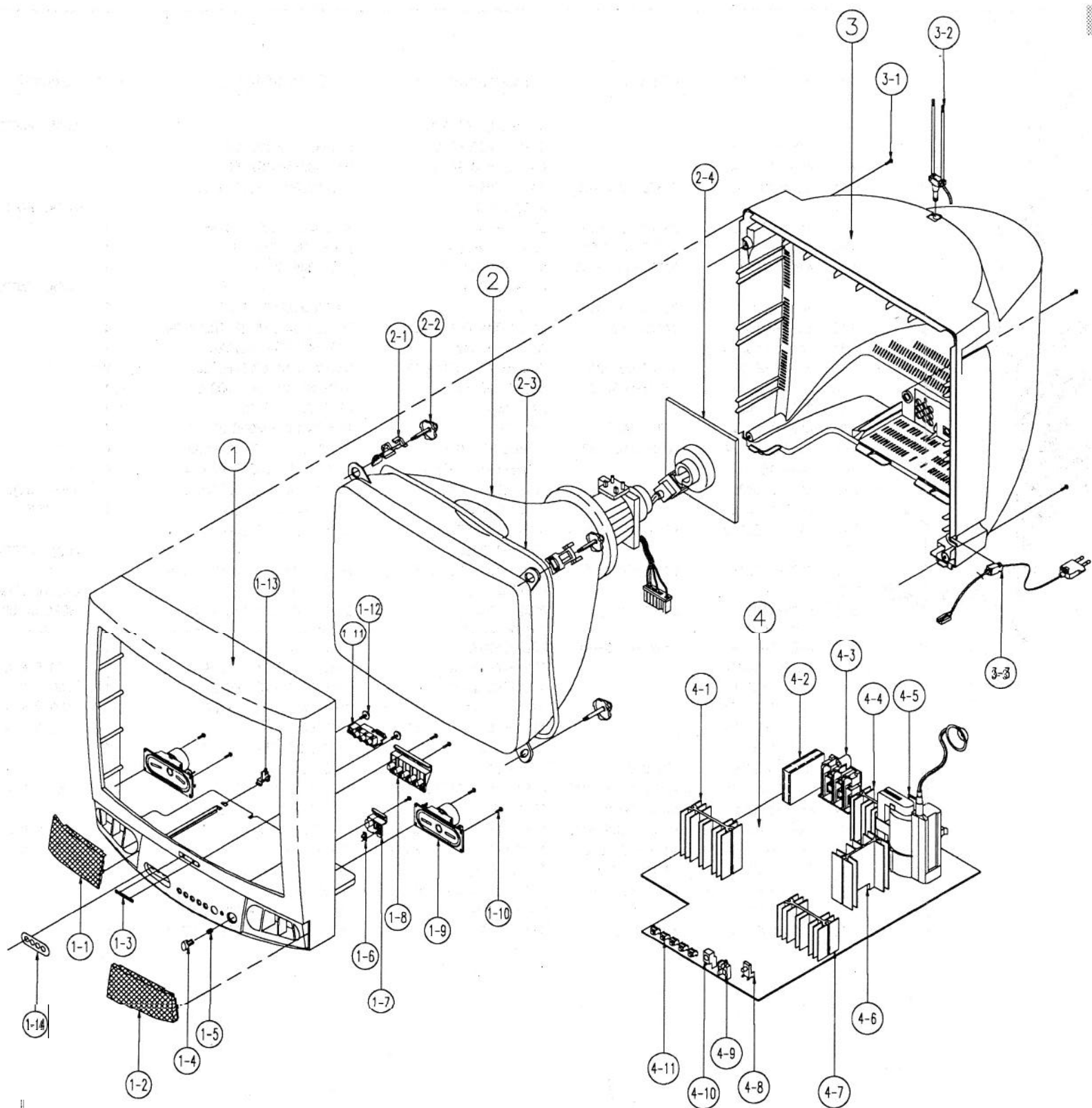
(BUYER ; S.E.P.A, S.E.M, G/SUPPLY)

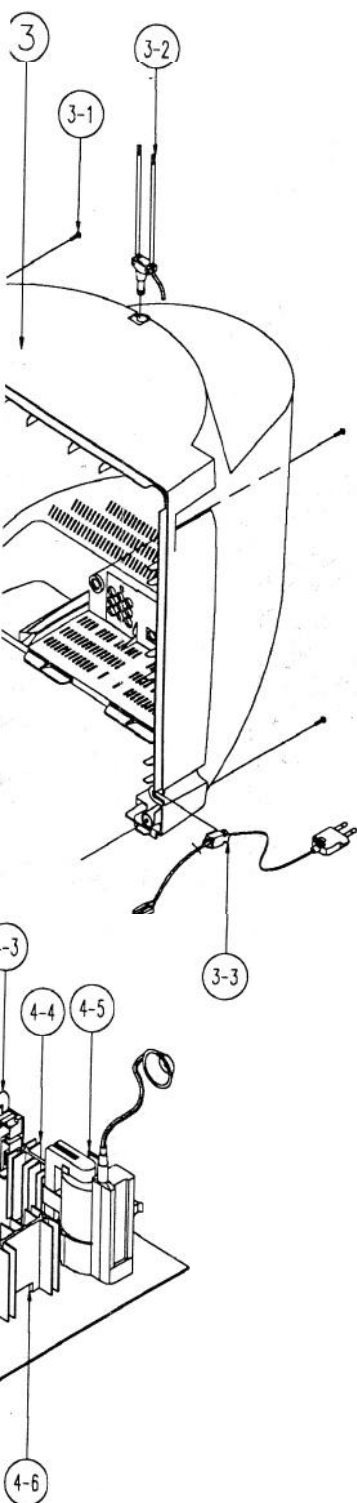




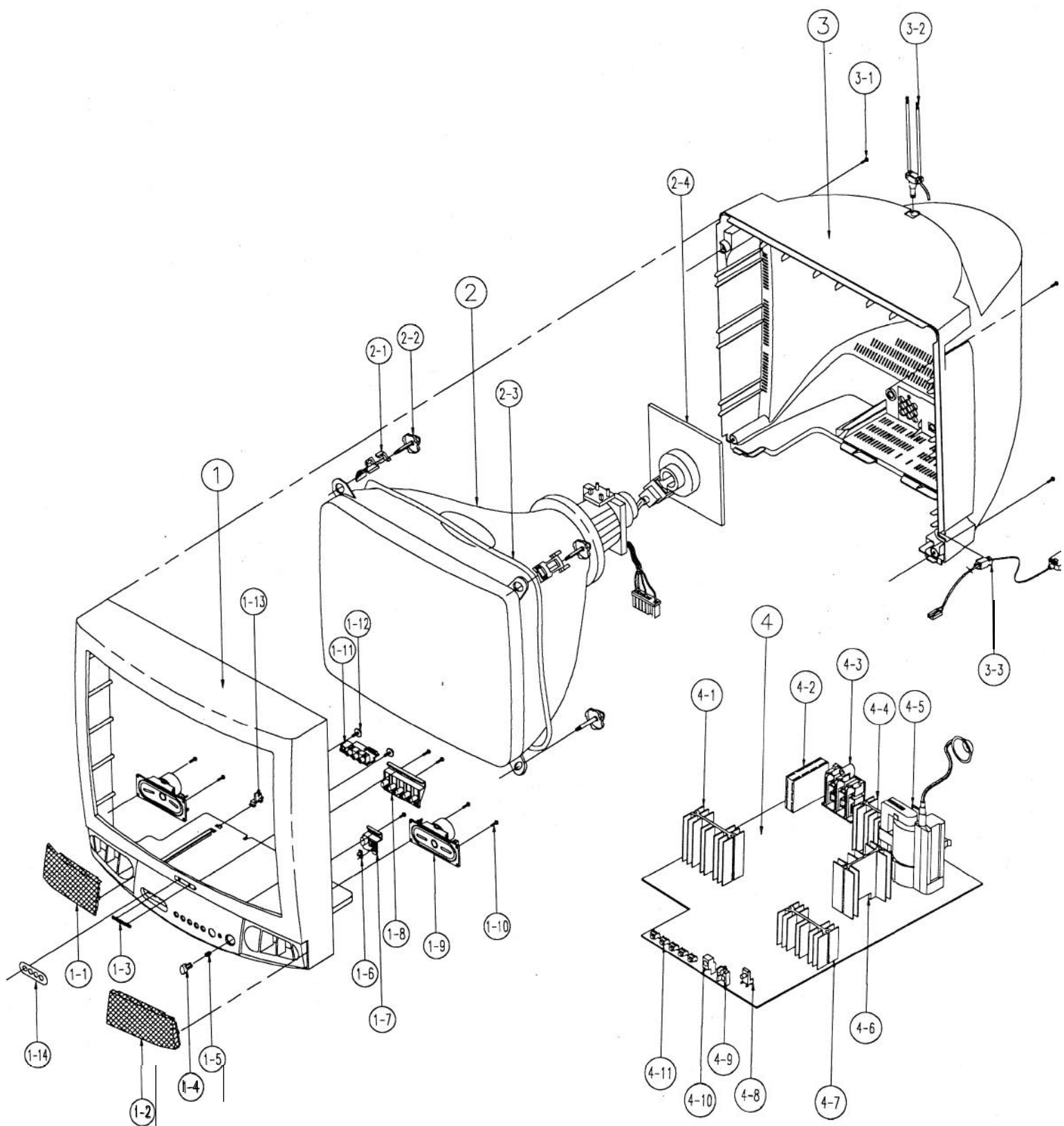
No	New Code No	Old Code No.	Description	Specification	Q'ty	Remarks
1			ASSY- CABINET, FRONT			LOCAL PARTS
1-1	AA63-50290B		GRILLE-WOOFER, L	DP, AA63-50189B, 68	1	
1-2	AA63-50290A		GRILLE-WOOFER, R	DP, AA63-50189A, 68	1	
1-3	AA64-70010C	34533-0074-020	BADGE- BRAND	AL, L50, GOLD, FLAT, SS, 2	1	
1-4			KNOB- POWER			LOCAL PARTS
1-5	AA61-60003B	36674-037-820	SPEAKER- CS	SUS304, 0.5, 0DB, H9, N5	1	
1-6	AA64-40247A	34163-0062-000	INDICATOR- LED	ACRYL. HB. 6845. 46	1	
1-7	AA64-40241A	34073-0109-000	WINDOW- REMOCON	PC, 6845. 46	1	
1-8			KNOB- CONTROL			LOCAL PARTS
1-9	3001-000190	34029-200-007	SPEAKER	5W, 80HM, 89DB, 150HZ	2	
1-10	6002-000514	37148-540-153	SCREW-TAP, RH(SPK+CF)	RH, +, 2, M4, L15, ZPC(BLK), SW	4	
1-11	*AA97-90003N		ASSY-PCB, A/V	TXE2545. 2749 KCT52A	1	
1-12	AA60-10002A	37144-001-210	SCREW-TAPPING(PA+CF)	RH, +M4, L12, ZPC(YEL)CD	2	
1-13	AA61-40053A	33383-0004-000	STOPPER- PC8	HIPS, HB, WHT, ALL MODEL	1	
1-14	3722-001031		JACK- RCA	3P, 3.6MM, #18, AU	1	
2	AA03-10007M	81320-0207	CRT- COLOR	A68KSA30X, +380MG, 29", 11	1	
2-1	AA654-30017A	36635-002-010	CLAMPER-D, COIL	NYLON-66, VO, NTR, DADH300	4	
2-2	AA60-10050C		SCREW-ASSY(CRT+CF)	WC, HH, +, M5, L35, SWRCH118	4	
2-3	AA27-20002B	A1149-0014	COIL-DEGAUSING	29", 13, 30HM, 70T, L3100, E	1	SEPA, G/SUP
	AA27-20001N		COIL-DEGAUSING	29", 90HM, 50T, L3200, E	1	SEM
2-4	*AA97-70001U	*3Y32-00046-010	ASSY-PCB, CRT	KCT52A, 29", CT-6846	1	
3			CABINET- BACK			LOCAL PARTS
3-1	6002-0005 14	37148-540-153	SCREW-TAPPING(CB+CF)	RH, +, 2, M4, L15, ZPC(BLK), SW	6	
3-2			ANTENNA- ROD			DELETE ITEM
3-3	AA39-10002C	33053-817-060	POWER- CORD	DP, NSP-419C, VCTFK, 1.8M, HQ	1	SEPA, G/SUP
	AA39-10002C		POWER- CORD	DP, DW-006, SPC2.2, 1M, HOUS	1	SEM
	AA61-20050A	33323-0015-010	HOLDER- CORD	PP, VO, BLK, DO	1	
4	● AA97-10034X		ASSY-PWB, MAIN	CT6846W/ASPCX, KCT52A	1	CKD S.N.A
	*AA97-10035C		ASSY-PWB, MAIN	CT6846W/ASEMCX, KCT52A	1	CKD S.N.A
	● AA97-10034Y		ASSY-PCB, MAIN	CT6846W/AGECX, KCT52A	1	CKD S.N.A
4-1	*AA96-60270A		ASSY-H/S, SOUND(IC601)	TDA7266	1	CKD S.N.A
4-2	AA40-10005B		TUNER- F/S	TECC1080PK25A, NTSC/USA	1	
4-3	3722-000499	A3040-0198	JACK- RCA	9P(S), SN	1	
4-4	*AA96-60271A	*3Y82-20080-010	ASSY-H/S, VERT(HO)(Q401)	2SD1887TD, NPN, 1500V	1	CKD S.N.A
4-5	AA26-30002K	A1201-004B	TRANS- FLY BACK	FTH-29A001, 29", 130V	1	
4-6	*AA96-60272A	*3Y82-20081-010	ASSY-H/S, VERT(IC301)	TDA8350Q/N4, SIP	1	CKD S.N.A
4-7	*AA96-60273A	*3Y83-20036-010	ASSY-H/S, POWER(IC801)	STR- S6709	1	CKD S.N.A
4-8	3404-000291	A3018-0072	SWITCH- TACT	12V, 50MA, 160GF, 8.4X22.7, SI	1	
4-9	*AA96-30001B	*3H77-00001-070	ASSY-LED, GUIDE(LD901)	DL-G5RGA	1	
4-10	AA59-60003B		MODULE- REMOCON	SR-12V, 38KHZ, 940NM, MESH	1	
4-11	3404-000244	83018-0034	SWITCH- TACT	15V, 20MA, 90-170GF, 7.5X7MM	5	

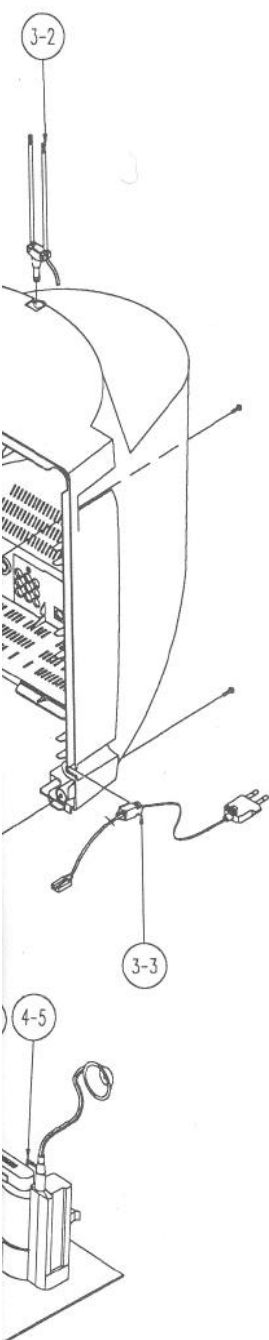
29710





No	New Code No	Old Code No.	Description	Specification	Q'ty	Remarks
1			ASSY-CABINET, FRONT			LOCAL PART
1-1	AA63-50291B		GRILLE-WOOFER, L	DP, AA63-50190B, 63	1	
1-2	AA63-50191A		GRILLE-WOOFER, R	DP, AA63-50190A, 63	1	
1-3	AA64-70010C	34533-0074-020	BADGE-BRAND	AL, L50, GOLD, FLAT, SS, 2	1	
1-4			KNOB-POWER			LOCAL PART
1-5	AA61-60003E	36674-037-820	SPRING-CS	SUS304, 0.5, 0DB, H9, N5	1	
1-6	AA64-40248A		INDICATOR-LED	ACRYL, HB, 6345, 46	1	
1-7	AA64-40242A		WINDOW-REMOCON	PC, 6345, 46	1	
1-8			KNOB-CONTROL			LOCAL PART
1-9	3001-000190	34029-200-007	SPEAKER	5W, 80HM, 89DB, 150HZ	2	
1-10	6002-000514	37148-540-153	SCREW-TAP, RH(SPK+CF)	RH, +, 2, M4, L15, ZPC(BLK), SW	4	
1-11	*AA97-90003N		ASSY-PCB, A/M	TXE2545, 2749 KCT52A	1	
1-12	AA60-10002A	37144-001-210	SCREW-TAPPING(PATCF)	RH, +M4, L12, ZPC(YEL)CD	2	
1-13	AA61-40053A	33383-0004-000	STOPPER-PCB	HIPS, HB, WHT, ALL MODEL	1	
1-14	3722-001031		JACK-RCA	3P, 3.6MM, #18, AU	1	
2	81320-0210		CRT-COLOR	A63AFW32X 261NCH 100DEG 3	1	
2-1	AA654-30017A	36635-002-010	CLAMPER-D, COIL	NYLON-66, V0, NTR, DADH300	4	
2-2	AA60-10050C		SCREW-ASSY(CRT+CF)	WC, HH, +, M5, L35, SWRCH118	4	
2-3	AA27-20002C		COIL-DEGAUSING	25", 14, 30HM, 70T, L2770, E	1	SEPA, G/SU
	AA27-20001W		COIL-DEGAUSING	25", 7, 50HM, 33T, L2800, E	1	SEM
2-4	*AA97-70004A	*3Y32-00046-01C	ASSY-PCB, CRT	KCT52A, 29", CT-6846	1	
3			CABINET-BACK			LOCAL PART
3-1	6002-000514	37148-540-153	SCREW-TAPPING(CB+CF)	RH, +, 2, M4, L15, ZPC(BLK), SW	6	
3-2			ANTENNA-ROD			DELETE IT
3-3	AA39-10002C	33053-817-060	POWER-CORD	DP, NSP-419C, VCTFK, 1.8M, HO	1	SEPA, G/SU
	AA39-10002C		POWER-CORD	DP, DW-006, SPC2, 2.1M, HOUS	1	SEM
	AA61-20050A	33323-0015-01C	HOLDER-CORD	PP, V0, BLK, DC	1	
4	*AA97-10034X		ASSY-PWB, MAIN	CT6846W/ASPCX, KCT52A	1	CKD S.N.A
	● AA97-10035C		ASSY-PWB, MAIN	CT6846W/ASEMCX, KCT52A	1	CKD S.N.A
	*AA97-10034Y		ASSY-PCB, MAIN	CT6846W/AGECX, KCT52A	1	CKD S.N.A
4-1	*AA96-60270A		ASSY-H/S, SOUND(IC601)	TDA7266	1	CKD S.N.A
4-2	AA40-10005B		TUNER-F/S	TECC1080PK25A, NTSC/USA	1	
4-3	3722-000499	A3040-019B	JACK-RCA	9P(S), SN	1	
4-4	*AA96-60350A		ASSY-H/S, VERT(HO)(Q401)	2SD1880, NPN	1	CKD S.N.
4-5	AA26-30002K	A1201-004B	TRANS-FLY BACK	FTH-29A001, 29", 130V	1	
4-6	*AA96-60272A	*3Y82-20081-01C	ASSY-H/S, VERT(IC301)	TDA8350Q/N4, SIP	1	CKD S.N.A
4-7	*AA96-60273A	*3Y83-20036-01C	ASSY-H/S, POWER(IC801)	STR-S6709	1	CKD S.N.A
4-8	3404-000291	A3018-0072	SWITCH-TACT	12V, 50MA, 160GF, 8.4X22, 7, S	1	
4-9	*AA96-30001B	*3H77-00001-07C	ASSY-LED, GUIDE(LD901)	DL-G5RGA	1	
4-10	AA59-60003B		MODULE-REMOCON	SR-12V, 38KHZ, 940NM, MESH	1	
4-11	3404-000244	B3018-0034	SWITCH-TACT	15V, 20MA, 90-170GF, 7.5X7MM	5	





No	New Code No	Old Code No.	Description	Specification	Q'ty	Remarks
1			ASSY-CABINET, FRONT			LOCAL PARTS
1-1	AA63-50292B		GRILLE-WOOFER, L	DP, AA63-50197B, 53		
1-2	AA63-50292A		GRILLE-WOOFER, R	DP, AA63-50197A, 53		
1-3	AA64-70015B		BADGE- BRAND	AL, L45, GOLD, R2000, SS		
1-4			KNOB- POWER			LOCAL PARTS
1-5	AA61-60003T		SPRING- CS	SUS304, 0.5, 007, H13, 5		
1-6	AA64-40255A		INDICATOR- LED	ACRYL, HB, 5345, 46		
1-7	AA64-40254A		WINDOW- REMOCON	PC, 5345		
1-8			KNOB- CONTROL			LOCAL PARTS
1-9	3001-000191		SPEAKER	3W, 80HM, 90DB, 180HZ	2	
1-10	6002-000514	37148-540-153	SCREW-TAP, RH(SPK+CF)	RH, +, 2, M4, L15, ZPC(BLK), SW	4	
1-11	*AA97-90003N		ASSY-PCB, A/V	TXE2545, 2749 KCT52A		
1-12	AA60-10002A	37144-001-210	SCREW-TAPPING(PA+CF)	RH, +M4, L12, ZPC(YEL)CD	2	
1-13	AA61-40053A	33383-0004-000	STOPPER- PCB	HIPS, HB, WHT, ALL MODEL		
1-14	3722-001031		JACK- RCA	3P, 3, 6MM, #18, AU		
2	AA03-10004K		CRT- COLOR	A51KRE83X(BU), +380MG, 21		
2-1	AA654-30017A	36635-002-010	CLAMPER-D, COIL	NYLON-66, VO, NTR, DADH300	4	
2-2	AA60-10050D		SCREW-ASSY(CRT+CF)	WC, HH, +, M5, L35, SWRCH118	4	
2-3	AA27-20001D		COIL-DEGAUSING	21", 5, 70HM, 55T, L1410, D		
2-4	*AA97-70004B		ASSY-PCB, CRT	CT5346, KCT52A		
3			CABINET- BACK			LOCAL PARTS
3-1	6002-000514	37148-540-153	SCREW-TAPPING(CB+CF)	RH, +, 2, M4, L15, ZPC(BLK), SW	6	
3-2			ANTENNA- ROD			DELETE ITEM
3-3	AA39-10002D		POWER- CORD	DP, DW-006, SPC2, 2.1M, HOUS		
	AA61-20050A	33323-0015-010	HOLDER- CORD	PP, VO, BLK, DD		
4	*AA97-10036P		ASSY-PWB, MAIN	CT5346WB/ASM CX, K1, SEJ	1	CKD S.N.A
4-1	*AA96-60270A		ASSY-H/S, SOUND(1C601)	TDA7266	1	CKD S.N.A
4-2	AA40-10005B		TUNER- F/S	TECC1080PK25A, NTSC/USA		
4-3	3722-000499	A3040-019B	JACK- RCA	9P(S), SN		
4-4	*AA96-60351A		ASSY-H/S, VERT(H0)(Q401)	KSD5072YD, NPN	1	CKD S.N.A
4-5	AA26-30002H		TRANS- FLY BACK	FSV-20B001, 20", 125V		
4-6	*AA96-60353A		ASSY-H/S, VERT(1C301)	TDA8356, SIP, 9P	1	CKD S.N.A
4-7	*AA96-60352A		ASSY-H/S, POWER(1C801)	STR6707, SIP, 9PSMPS	1	CKD S.N.A
4-8	3404-000291	A3018-0072	SWITCH- TACT	12V, 50MA, 160GF, 8.4X22.7, S		
4-9	*AA96-30001B	*3H77-00001-070	ASSY-LED, GUIDE(LD901)	DL-G5RGA		
4-10	AA59-60003B		MODULE- REMOCON	SR-12V, 38KHZ, 940NM, MESH		
4-11	3404-000244	B3018-0034	SWITCH- TACT	15V, 20MA, 90-170GF, 7.5X7MM	5	