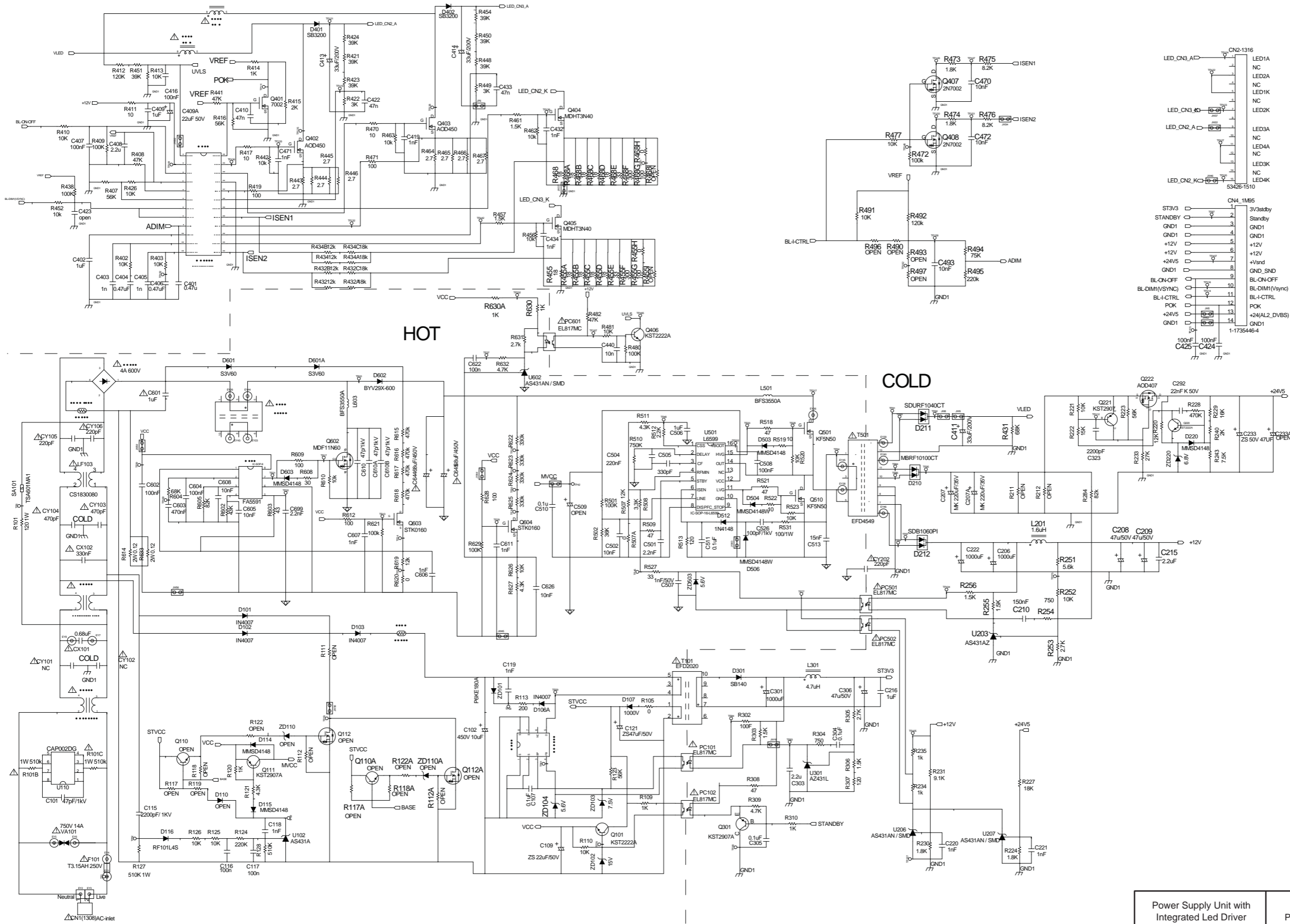
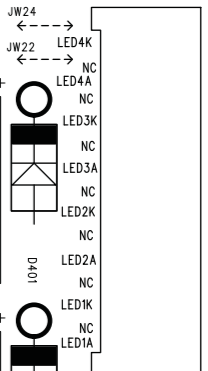


Power Supply Unit with Integrated Led Driver

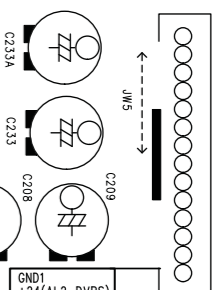
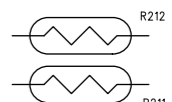




CN2:	90V~ / 240mA
Model:	PLDC-P005A
Input:	10-240V~; 50-60Hz
	0.3A - 1.2A
	3.3V~
	0.1A
	12.3V~
	2A
Vsrd	0.25A
	0.4A



Pin Header  
Soldering

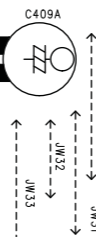


CN1  
+24V (AL2\_DVBS)  
POK  
BL-CTRL  
BL-DIM(Vsync)  
BL-ON-OFF  
GND\_SND  
+Vsrd  
+12V  
GND1  
GND1  
Standby  
3V3stdby

BAR CODE

Date : 11.01.20  
Rev 0.0

D M H I I F A P T S Q R R T

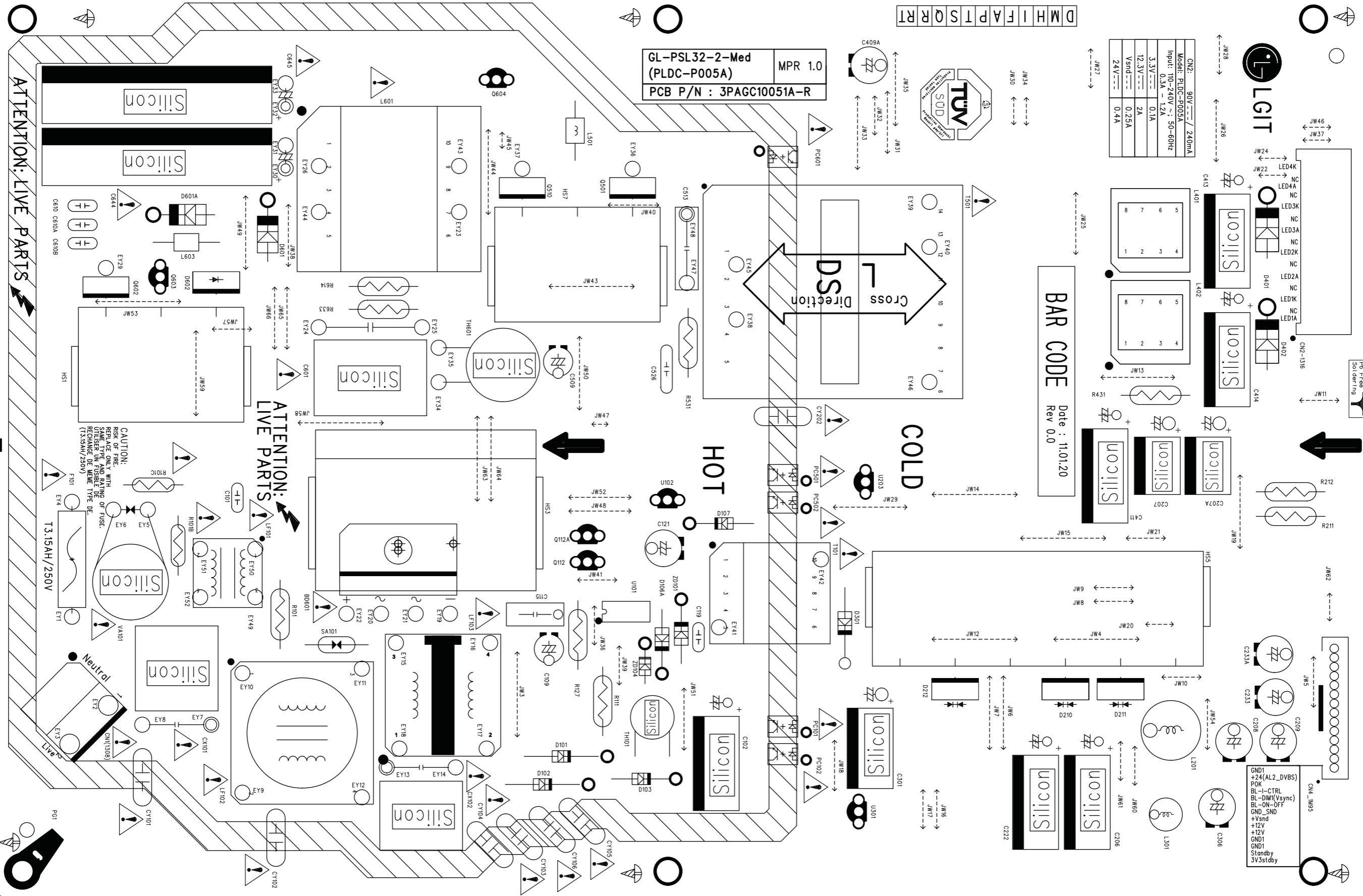


Cross  
Direction

COLD

HOT

GL-PSL32-2-Med  
(PLDC-P005A)  
MPR 1.0  
PCB P/N : 3PAGC10051A-R



ATTENTION: LIVE PARTS

ATTENTION: LIVE PARTS

CAUTION:  
RISK OF FIRE  
REPLACE ONLY WITH  
SAME TYPE AND RATING OF FUSE.  
REPLACE THE FUSE OF THE DE.  
(T3.15AH/250V)

T3.15AH/250V

Neutral

Live

PC1