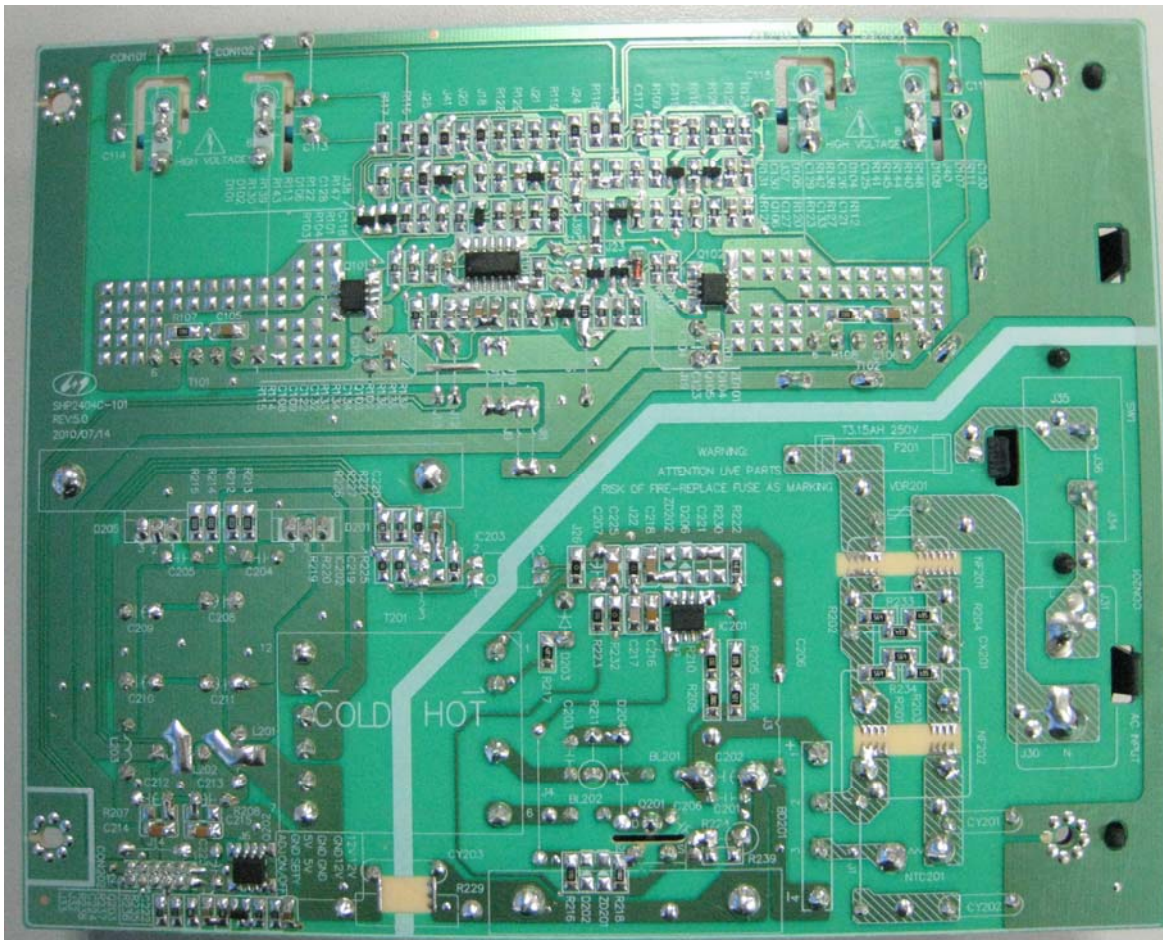
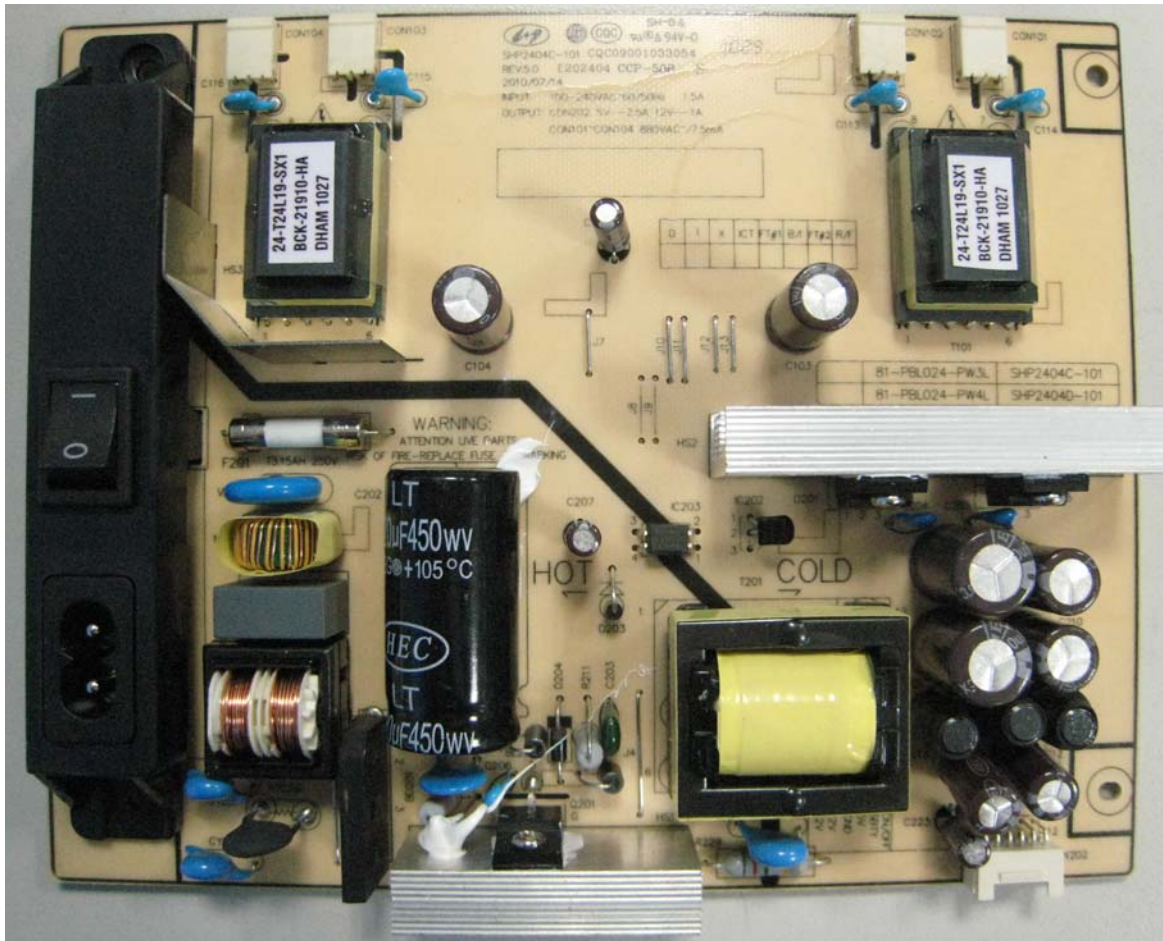


实物图





## 5 接插件 (CONNECTORS)

5.1 位号 (LOCATION): CON201

接插件型号 (CONNECTOR TYPE): AS-2P-2A2 or equivalent

| Pin No. | Name | Note     |
|---------|------|----------|
| 1       | AC-L | AC Input |
| 2       | NC   | NC       |
| 3       | AC-N | AC Input |

5.2 位号 (LOCATION): CON202

接插件型号 (CONNECTOR TYPE): PHDK-2\*6AW, 2.0 脚距, 双排 12 针, 卧式

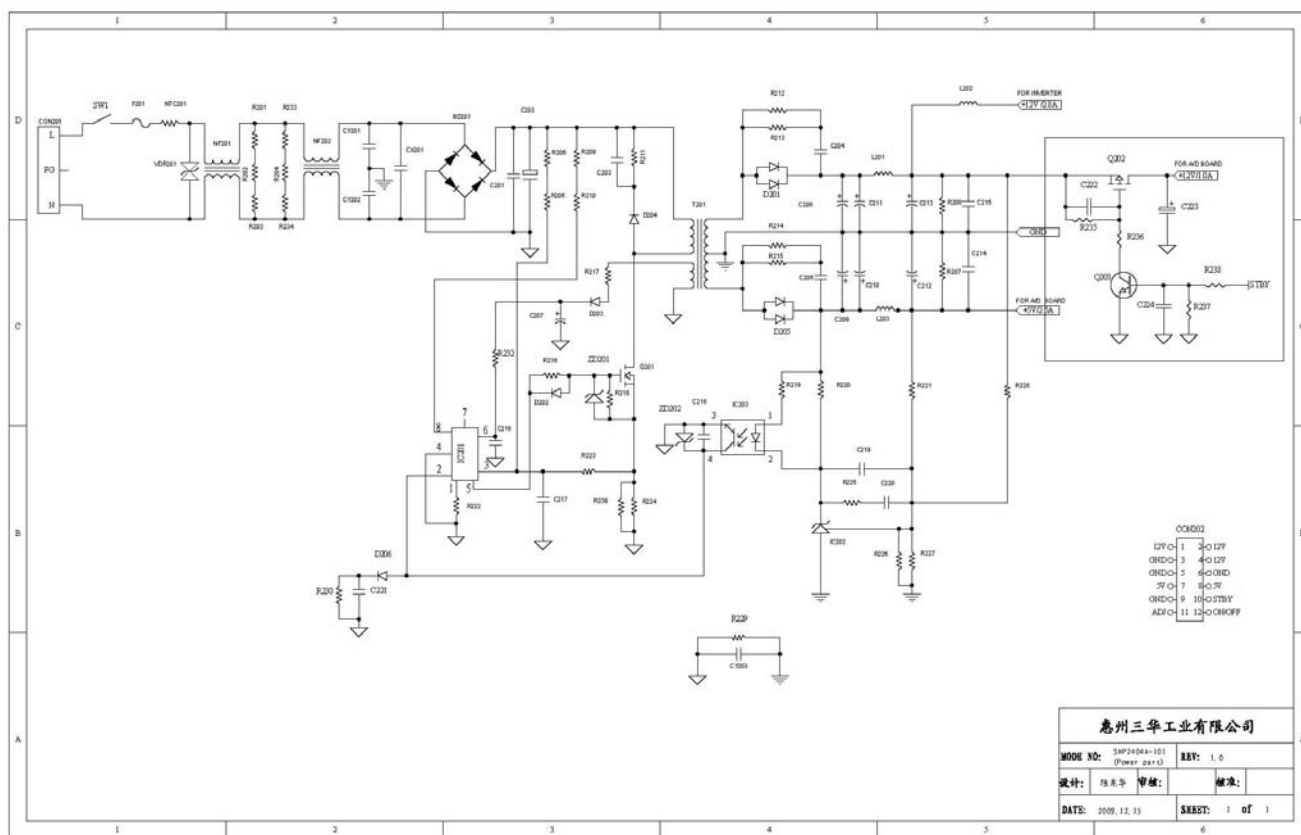
| PIN NO. | Symbol | Description    |
|---------|--------|----------------|
| 1, 2    | +12V   | Power +12V     |
| 3       | GND    | Power GND      |
| 4       | +12V   | Power +12V     |
| 5, 6    | GND    | Power GND      |
| 7, 8    | +5V    | Power +5V      |
| 9       | GND    | Power GND      |
| 10      | STBY   | STBY control   |
| 11      | ADJ    | Brightness     |
| 12      | ON/OFF | On/off control |

5.3 位号 (LOCATION): CON101、CON102、CON103、CON104

接插件型号 (CONNECTOR TYPE): FCN W01-05100-022N or equivalent

| Pin No | Symbol   | Description       |
|--------|----------|-------------------|
| 1      | Vout-HV+ | Lamp High Voltage |
| 2      | Vout-L-  | Lamp Low Voltage  |

## 7.1 POWER PART



FOR INVERTER  
+12V/2.6A

ADJ  
ADJ

IC101  
BT3102B

Q101  
2N7002

Q102  
2N7002

Q103  
2N7002

Q104  
2N7002

Q105  
2N7002

Q106  
2N7002

Q107  
2N7002

Q108  
2N7002

D101  
1N4007

D102  
1N4007

D103  
1N4007

D104  
1N4007

D105  
1N4001

D106  
1N4001

D107  
1N4001

D108  
1N4001

T101  
EEL-19

T102  
EEL-19

C101  
104

C102  
104

C103  
104

C104  
104

C105  
104

C106  
104

C107  
104

C108  
104

C109  
104

C110  
104

C111  
104

C112  
104

C113  
104

C114  
104

C115  
104

C116  
104

C117  
104

C118  
104

C119  
104

C120  
104

C121  
104

C122  
104

C123  
104

C124  
104

C125  
104

C126  
104

C127  
104

C128  
104

C129  
104

C130  
104

C131  
104

C132  
104

C133  
104

C134  
104

C135  
104

C136  
104

C137  
104

C138  
104

C139  
104

C140  
104

C141  
104

C142  
104

C143  
104

C144  
104

C145  
104

C146  
104

C147  
104

C148  
104

C149  
104

C150  
104

C151  
104

C152  
104

C153  
104

C154  
104

C155  
104

C156  
104

C157  
104

C158  
104

C159  
104

C160  
104

C161  
104

C162  
104

C163  
104

C164  
104

C165  
104

C166  
104

C167  
104

C168  
104

C169  
104

C170  
104

C171  
104

C172  
104

C173  
104

C174  
104

C175  
104

C176  
104

C177  
104

C178  
104

C179  
104

C180  
104

C181  
104

C182  
104

C183  
104

C184  
104

C185  
104

C186  
104

C187  
104

C188  
104

C189  
104

C190  
104

C191  
104

C192  
104

C193  
104

C194  
104

C195  
104

C196  
104

C197  
104

C198  
104

C199  
104

C200  
104

R101  
470K

R102  
470K

R103  
470K

R104  
470K

R105  
470K

R106  
470K

R107  
470K

R108  
470K

R109  
470K

R110  
470K

R111  
470K

R112  
470K

R113  
470K

R114  
470K

R115  
470K

R116  
470K

R117  
470K

R118  
470K

R119  
470K

R120  
470K

R121  
470K

R122  
470K

R123  
470K

R124  
470K

R125  
470K

R126  
470K

R127  
470K

R128  
470K

R129  
470K

R130  
470K

R131  
470K

R132  
470K

R133  
470K

R134  
470K

R135  
470K

R136  
470K

R137  
470K

R138  
470K

R139  
470K

R140  
470K

R141  
470K

R142  
470K

R143  
470K

R144  
470K

R145  
470K

R146  
470K

R147  
470K

R148  
470K

R149  
470K

R150  
470K

R151  
470K

R152  
470K

R153  
470K

R154  
470K

R155  
470K

R156  
470K

R157  
470K

R158  
470K

R159  
470K

R160  
470K

R161  
470K

R162  
470K

R163  
470K

R164  
470K

R165  
470K

R166  
470K

R167  
470K

R168  
470K

R169  
470K

R170  
470K

R171  
470K

R172  
470K

R173  
470K

R174  
470K

R175  
470K

R176  
470K

R177  
470K

R178  
470K

R179  
470K

R180  
470K

R181  
470K

R182  
470K

R183  
470K

R184  
470K

R185  
470K

R186  
470K

R187  
470K

R188  
470K

R189  
470K

R190  
470K

R191  
470K

R192  
470K

R193  
470K

R194  
470K

R195  
470K

R196  
470K

R197  
470K

R198  
470K

R199  
470K

R200  
470K

R201  
470K

R202  
470K

R203  
470K

R204  
470K

R205  
470K

R206  
470K

R207  
470K

R208  
470K

R209  
470K

R210  
470K

R211  
470K

R212  
470K

R213  
470K

R214  
470K

R215  
470K

R216  
470K