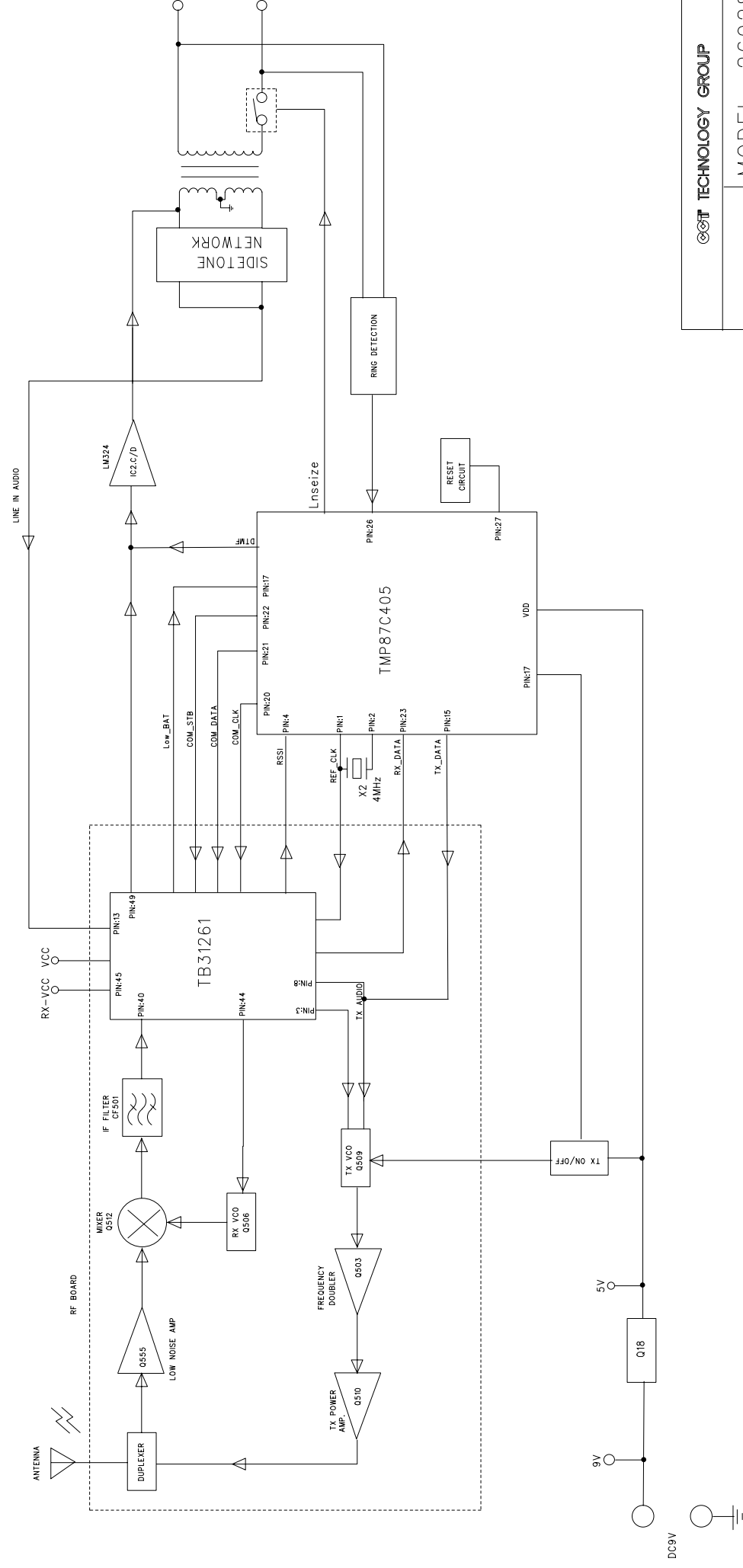


NOTE: 1. SAFETY COMPONENT

Base Functional Block Diagram Of Model 6928A Cordless Phone



TECHNOLOGY GROUP

DATE: 16 DEC.2001

MODEL: 26928A

TITLE:

40 CHANNEL 900M CORDLESS

PHONE BASE BLOCK DIAGRAM

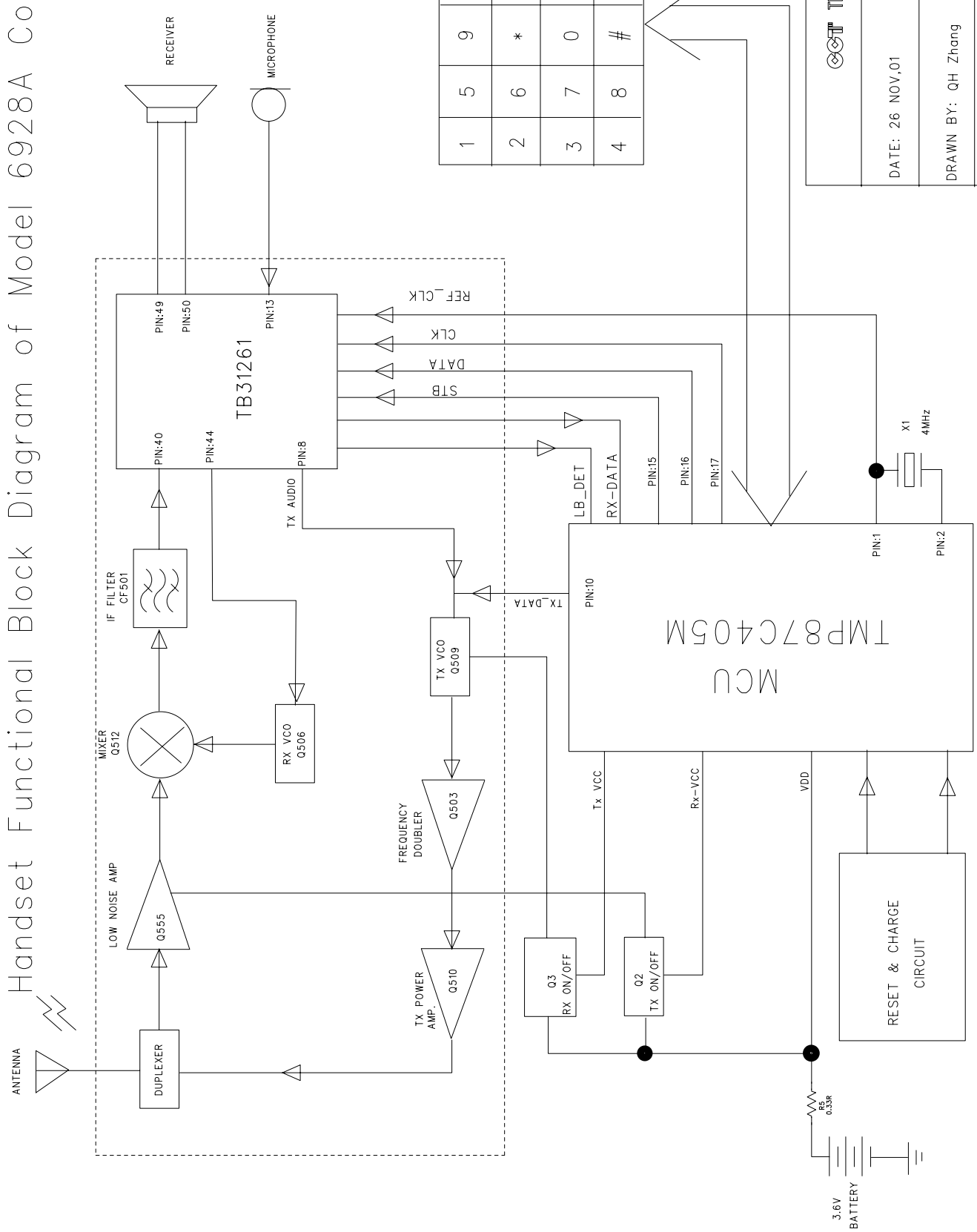
DRAWN BY: QH Zhang

CHECKED BY:

APPROVED BY:

Rev. 0C

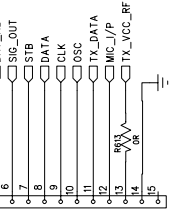
Handset Functional Block Diagram of Model 6928A Cordless Phone

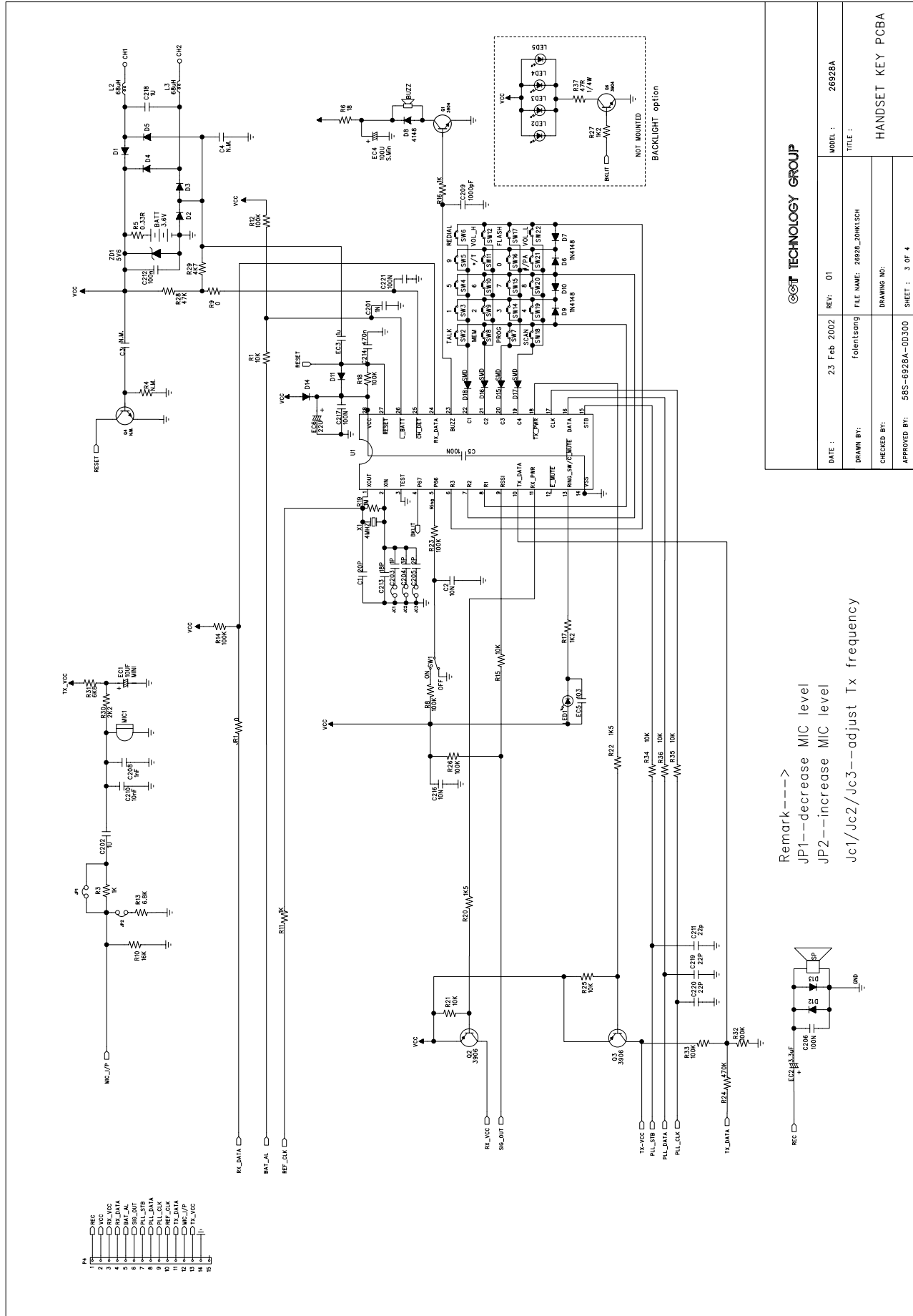


| | | | | |
|---|---|---|-------|------|
| 1 | 5 | 9 | RP | TALK |
| 2 | 6 | * | VL-UP | MEM |
| 3 | 7 | 0 | FLASH | PG |
| 4 | 8 | # | VL-DW | CHAN |

TECHNOLOGY GROUP

| | | | |
|--------------------|---|--|--|
| DATE: 26 NOV.01 | MODEL: 26928A | | |
| DRAWN BY: QH Zhang | TITLE: | | |
| CHECKED BY: | 40 CHANNEL 900M CORDLESS PHONE HANDSET BLOCK DIAGRAM | | |
| APPROVED BY: | Rev. 0B | | |





OT TECHNOLOGY GROUP

| | | | | |
|--------------|-----------------|-------------|----------------|-----------------|
| DATE : | 23 Feb 2002 | REV: 01 | MODEL : | 26928A |
| DRAWN BY: | forntisong | FILE NAME: | 26928_2001.SCH | TITLE : |
| CHECKED BY: | | DRAWING NO: | | HANDSET KEY PCB |
| APPROVED BY: | 585-6928A-0D300 | SHEET : | 3 OF 4 | |