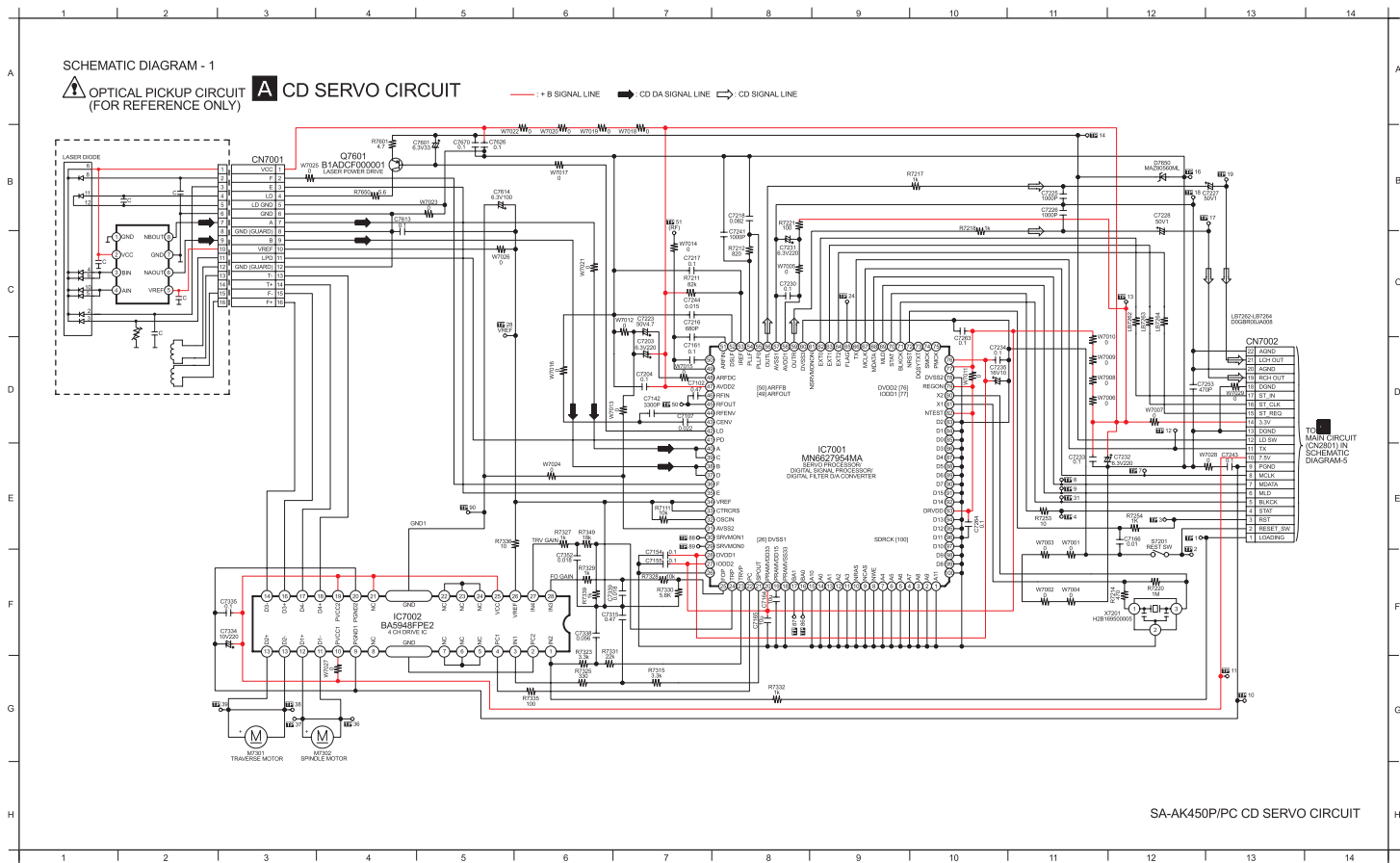
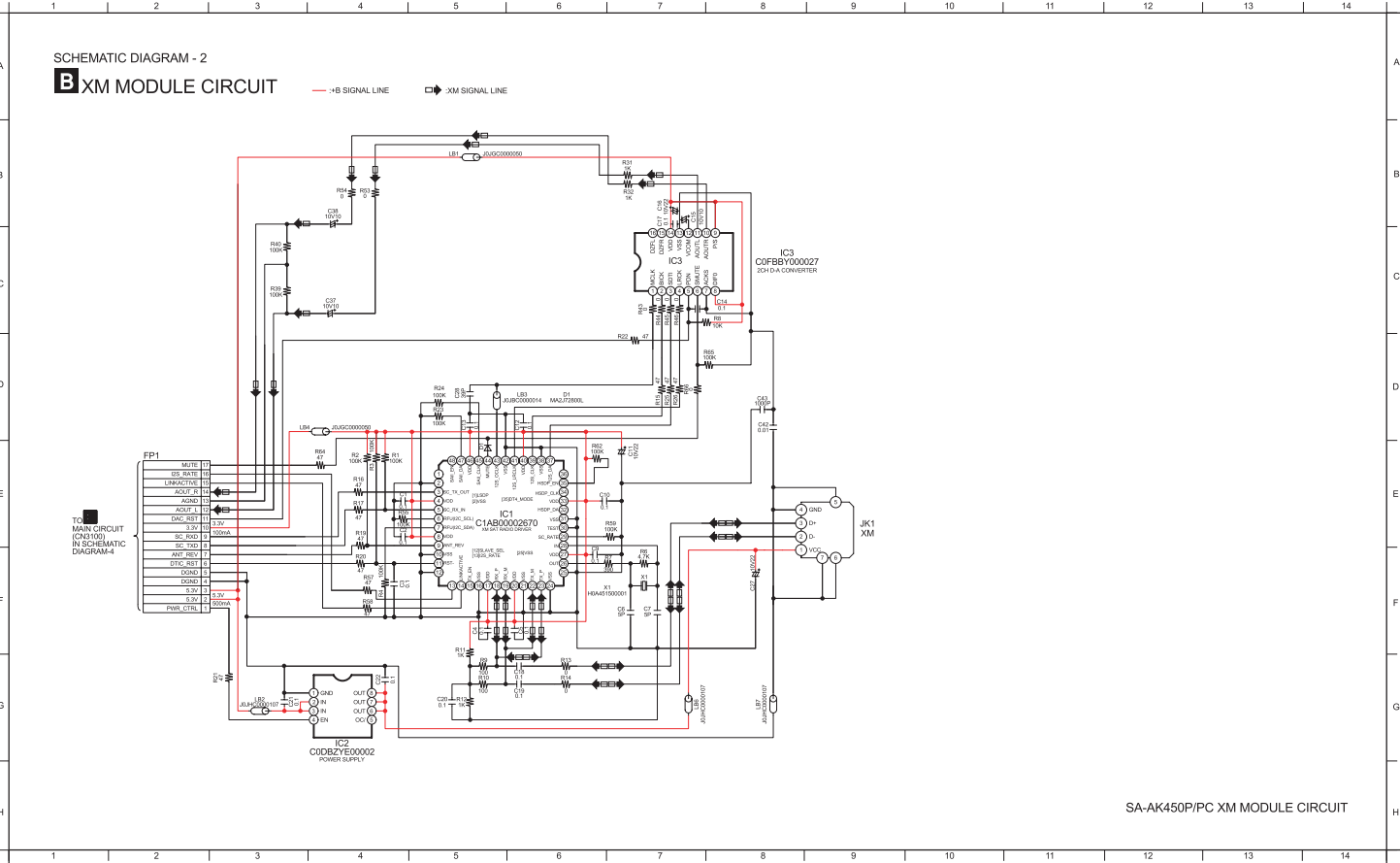


19 Schematic Diagram

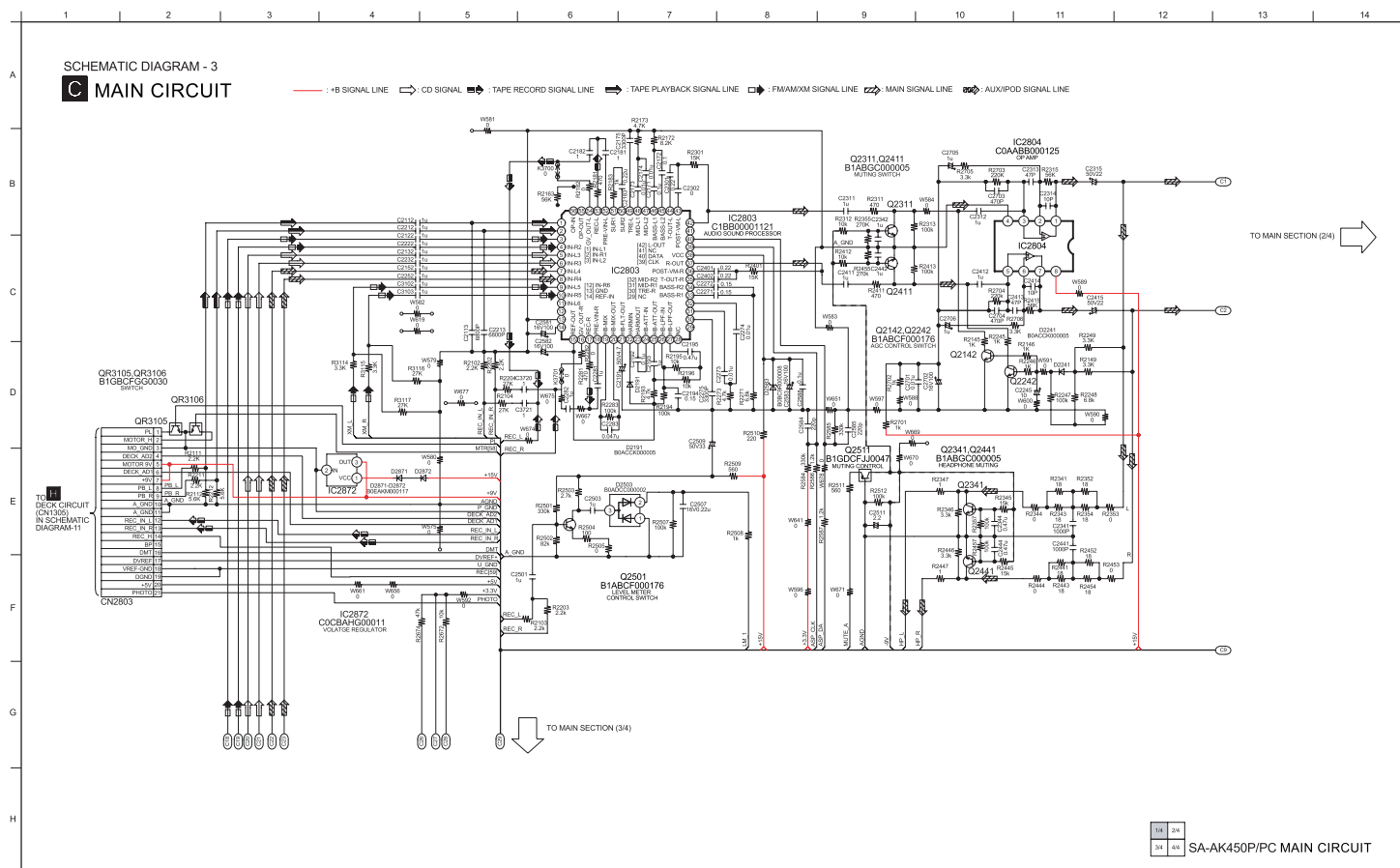
19.1. (A) CD Servo Circuit



19.2. (B) XM Module Circuit



19.3. (C) Main Circuit

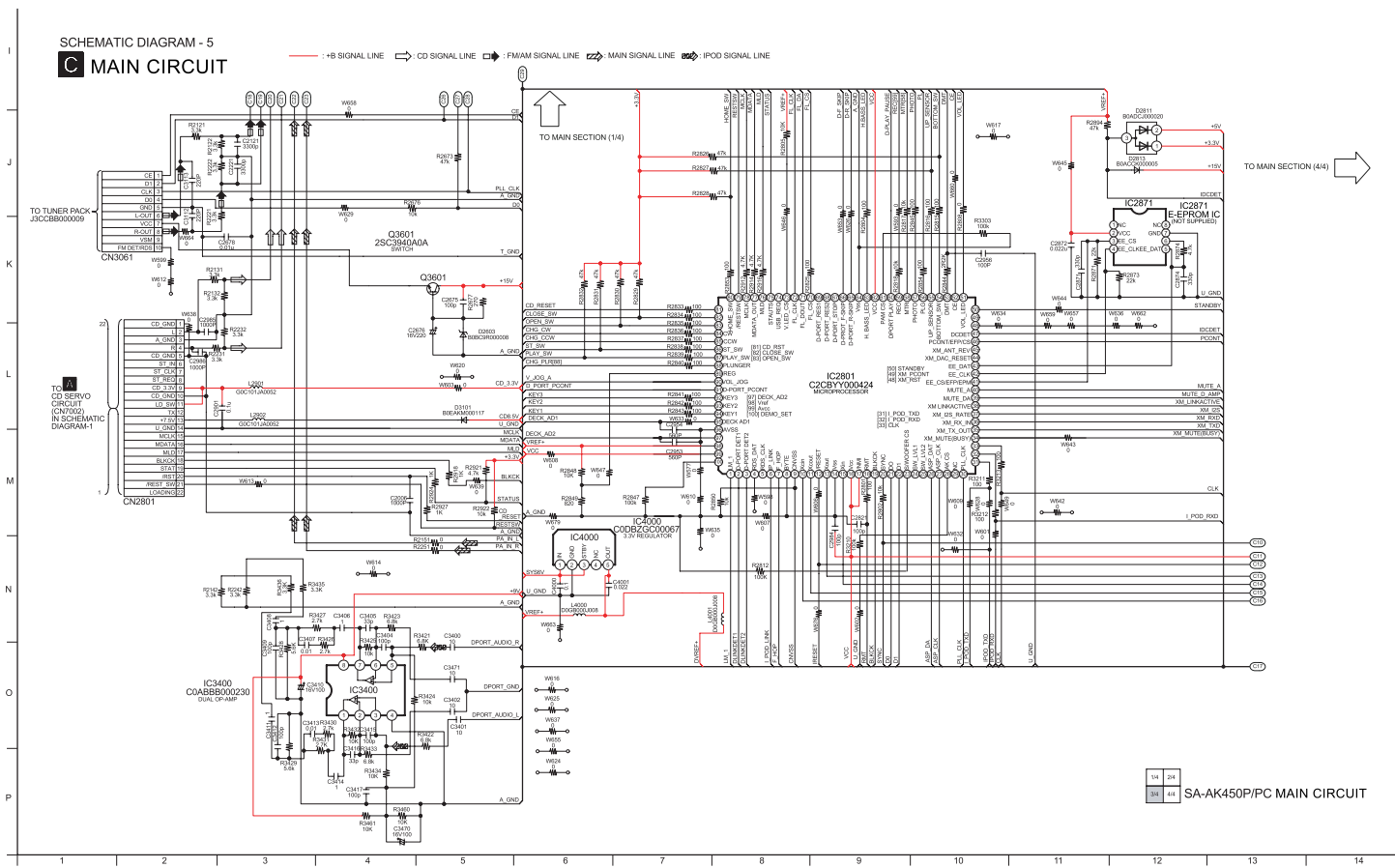


— : +B SIGNAL LINE : XM SIGNAL LINE : MAIN SIGNAL LINE : IPOD SIGNAL LINE

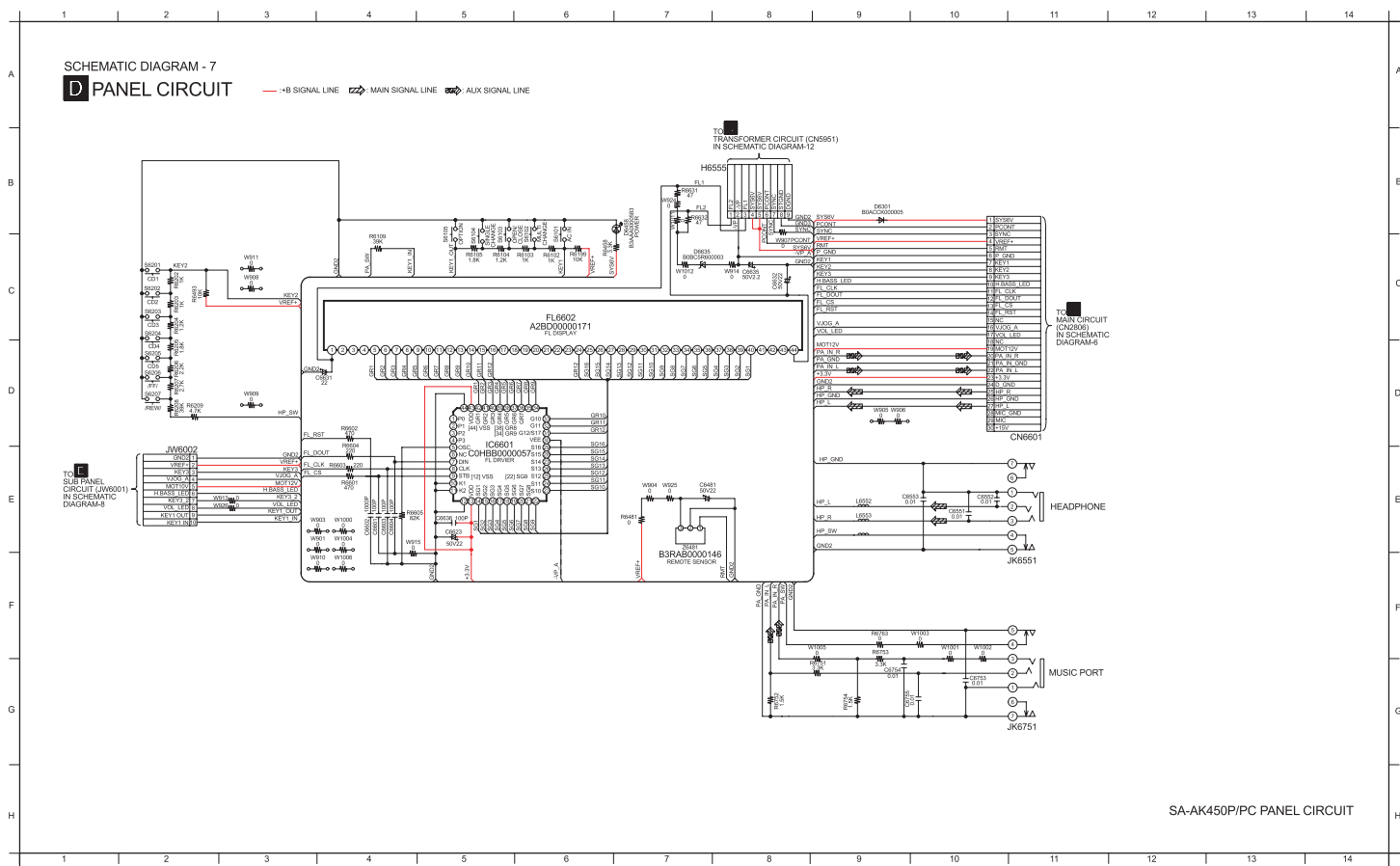


SCHEMATIC DIAGRAM - 5

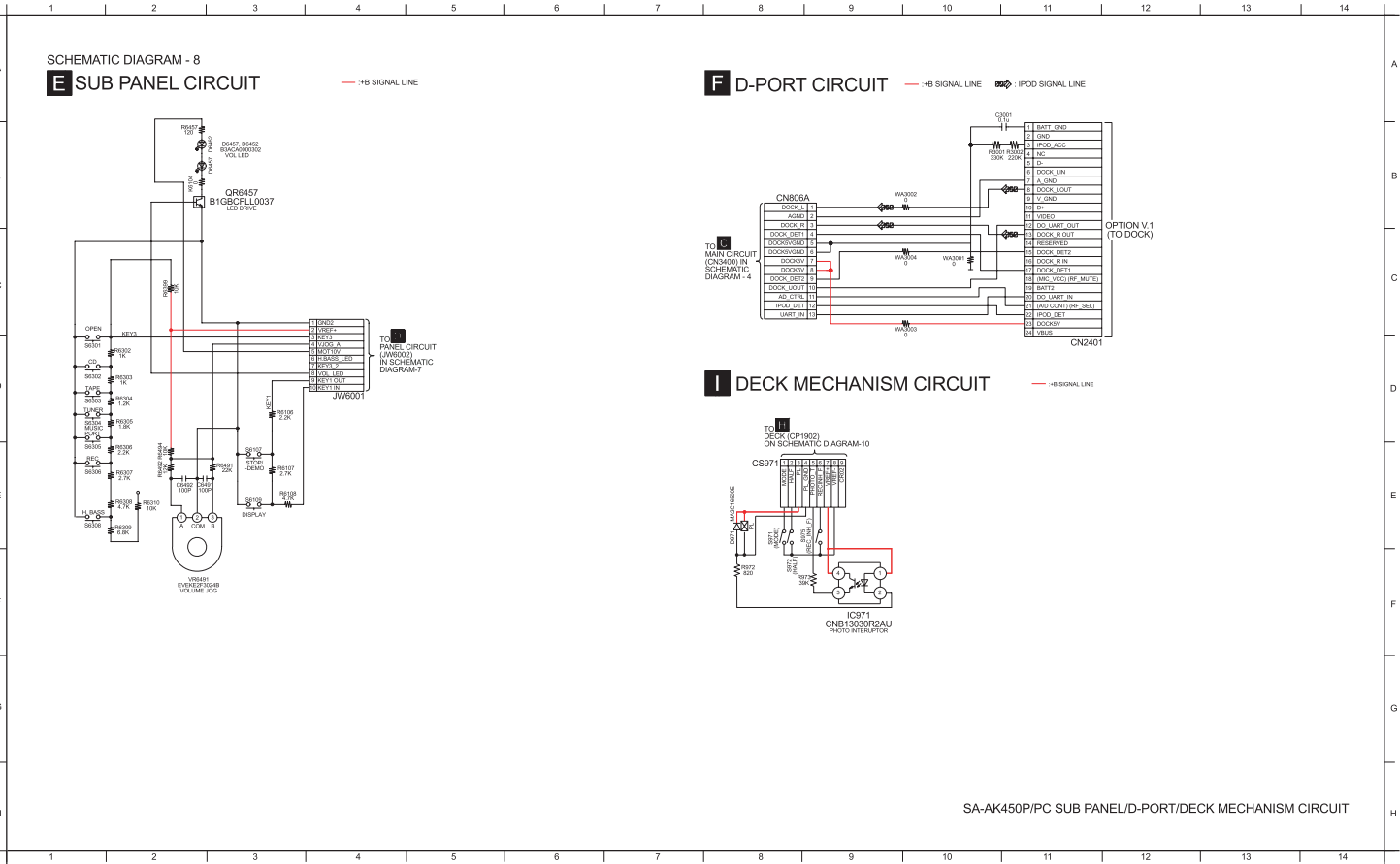
C MAIN CIRCUIT



19.4. (D) Panel Circuit



19.5. (E) Sub Panel Circuit, (F) D-Port Circuit & (I) Deck Mechanism Circuit



POWER CIRCUIT

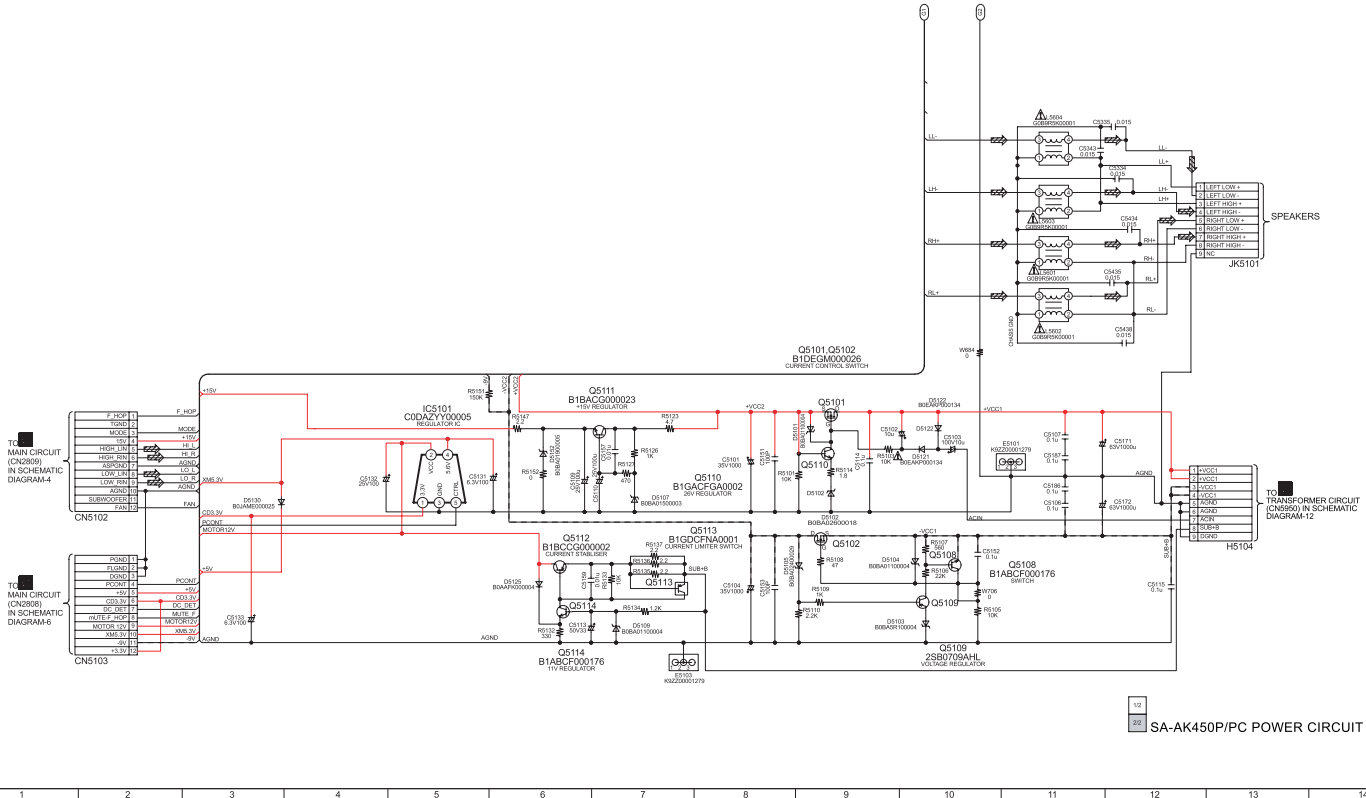
— : +B SIGNAL LINE — : -B SIGNAL LINE : MAIN SIGNAL LINE



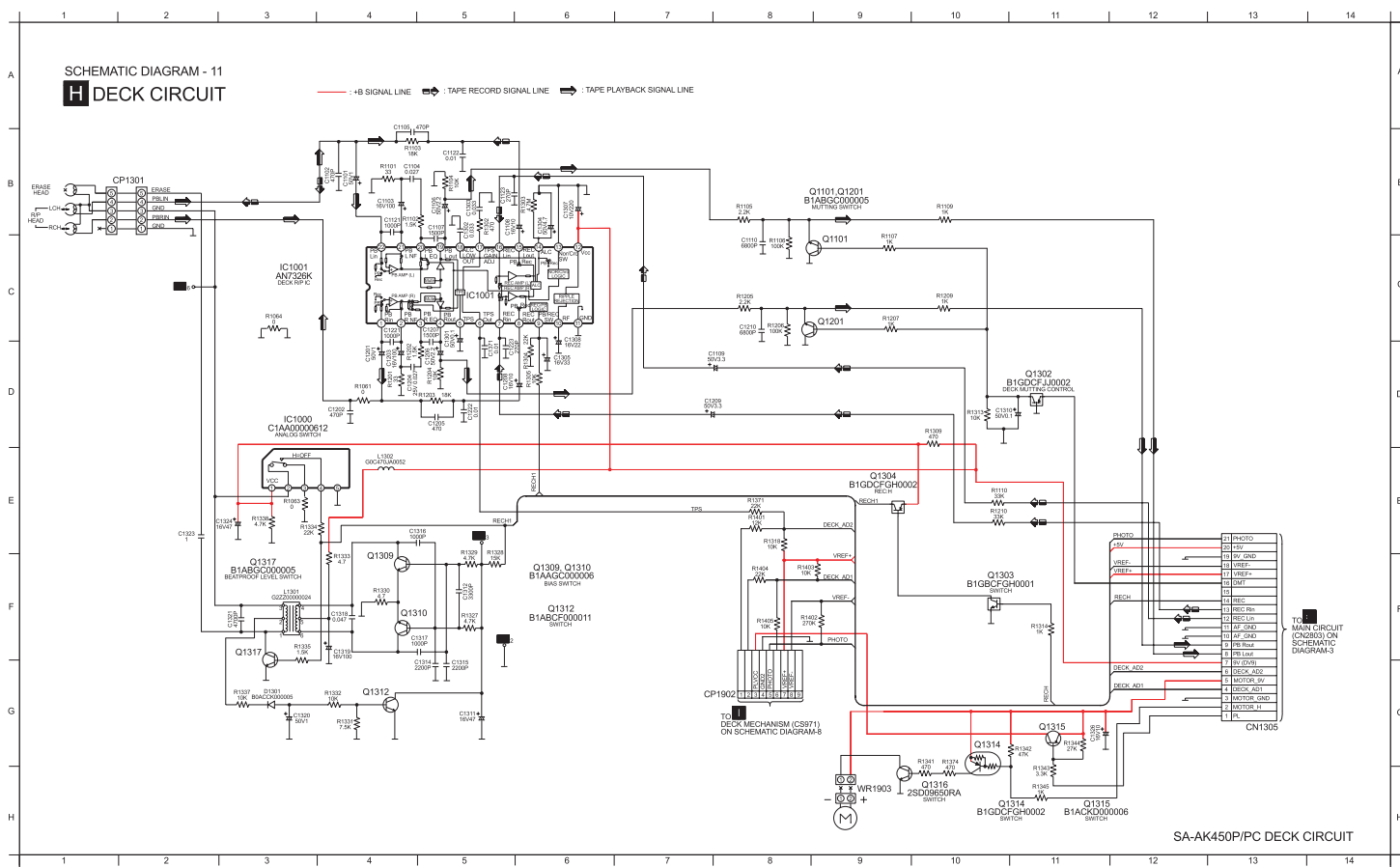
SCHEMATIC DIAGRAM - 10

POWER CIRCUIT

—+B SIGNAL LINE —-B SIGNAL LINE — MAIN SIGNAL LINE



19.7. (H) Deck Circuit



J TRANSFORMER CIRCUIT

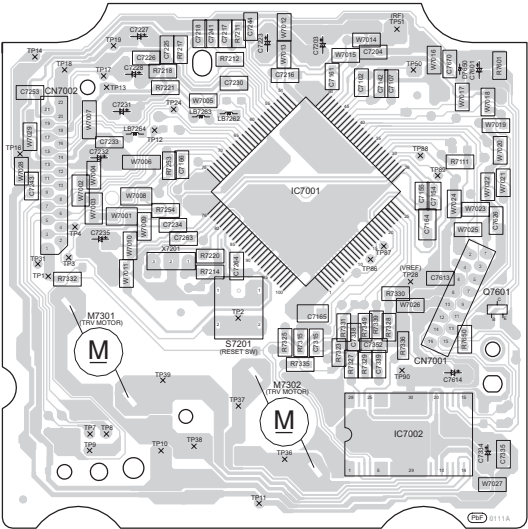


20 Printed Circuit Board

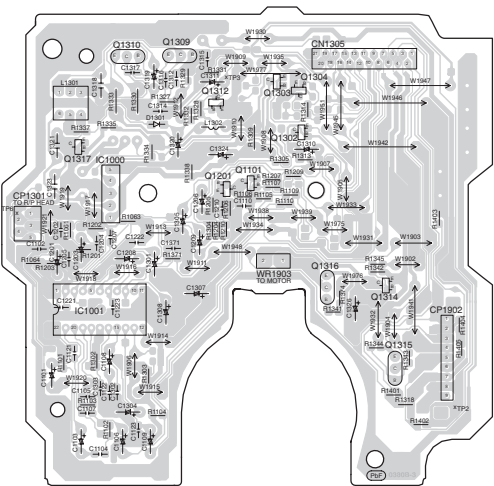
Note: Circuit board diagrams may be modified at any time with the development of new technology.

20.1. (A) CD Servo P.C.B., (H) Deck P.C.B. & (I) Deck Mechanism P.C.B.

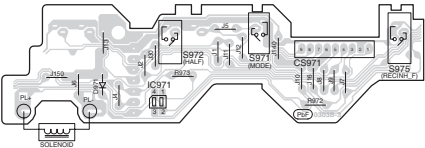
A CD SERVO P.C.B (REP0111A)



H DECK P.C.B (REP0134B)

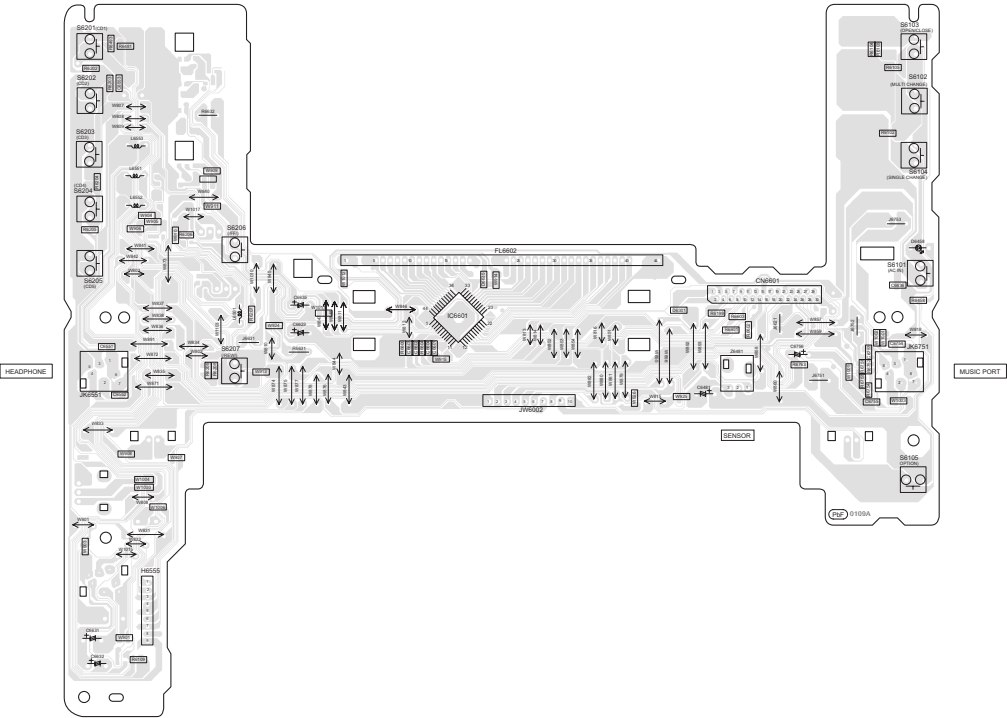


I DECK MECHANISM P.C.B (REP0321F)



81

D PANEL P.C.B (REPV0131D)





CAUTION
RISK OF ELECTRIC SHOCK
AC VOLTAGE LINE.
PLEASE DO NOT TOUCH THIS P.C.B

