

Service Service Service

Service Manual

Conteúdo**Página**

Ajustes.....	2
Manuseando comp. SMD, Instruções de Segurança e Notas.....	3
Instruções de Uso.....	4
Diagrama em Blocos e Conexões.....	5
Diagrama em Blocos e Conexões.....	6
Painel Frontal.....	6
Painel Frontal e OK.....	7
Layout Painel Frontal.....	8
Painel Frontal.....	9
Layout Painel Frontal.....	10
Painel Fonte de Alimentação.....	11
Layout Painel Index & Power.....	12
Painel Index & Power.....	13
Painel MPEG & Servo (DVP5505S).....	14
Painel SDRAM,Flash, Filtro Vídeo.....	15
Painel Filtro Áudio & Saída.....	16
Painel MPEG - Layout.....	17
Painel Index & Power, Reset (DVP5505S).....	19
Painel MPEG & Servo (DVP5505S).....	20
Painel SDRAM,Flash, Filtro Vídeo (DVP5505S).....	21
Painel Filtro Áudio & Saída (DVP5505S).....	22
Painel MPEG - Layout (DVP5505S).....	23
Painel Scart - Layout.....	25
Vista Explodida.....	26

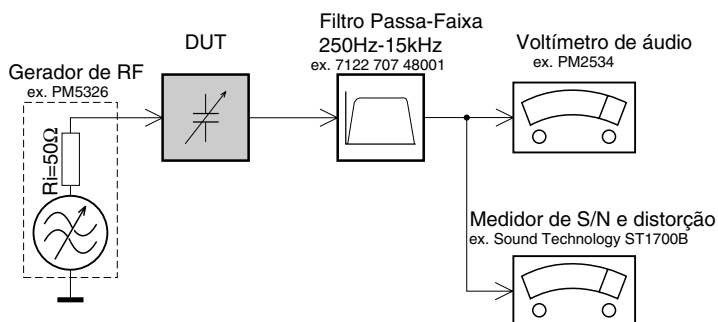


**CLASS 1
LASER PRODUCT**



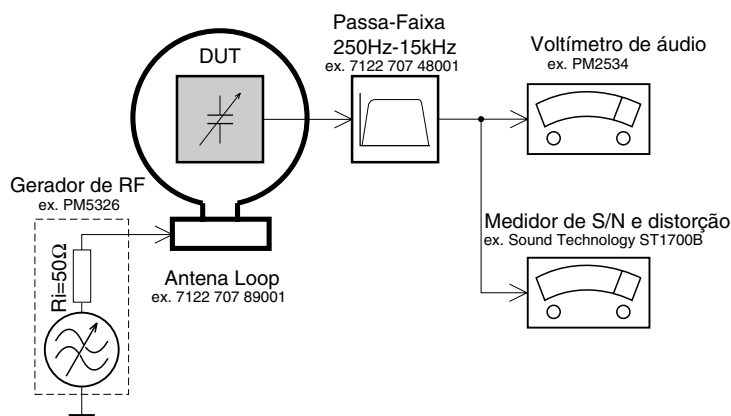
AJUSTES

Tuner FM



Use um filtro passa-faixa para eliminar ruídos (50Hz, 100Hz) e distorções do tom piloto (19kHz, 38kHz).

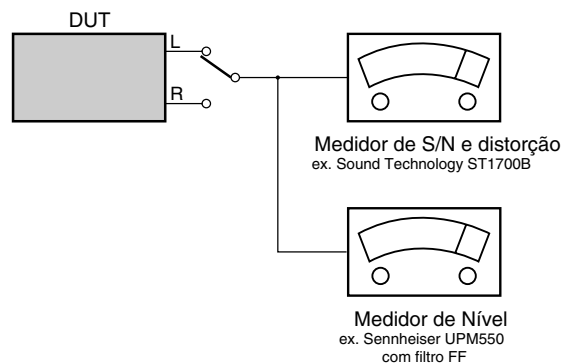
Tuner AM (MW,LW)



Para evitar interferências atmosféricas todas as medidas em AM devem ser feitas dentro de uma Gaiola de Faraday.
Use um filtro passa-faixa (ou um filtro passa altas de 250Hz) para eliminar ruídos (50Hz, 100Hz).

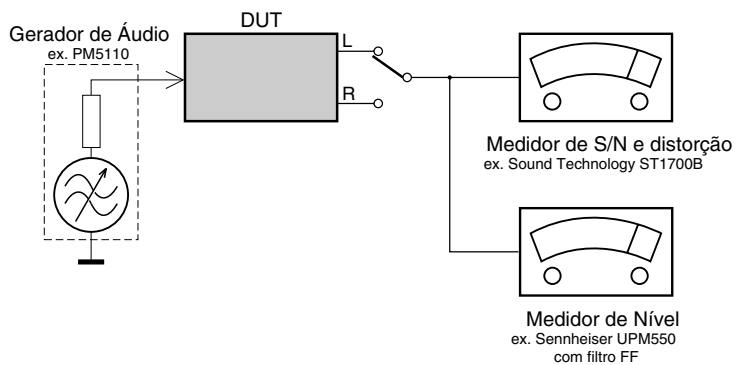
CD

Use um disco de sinal de áudio SBC429 4822 397 30184
(Substitui o disco de teste 3)

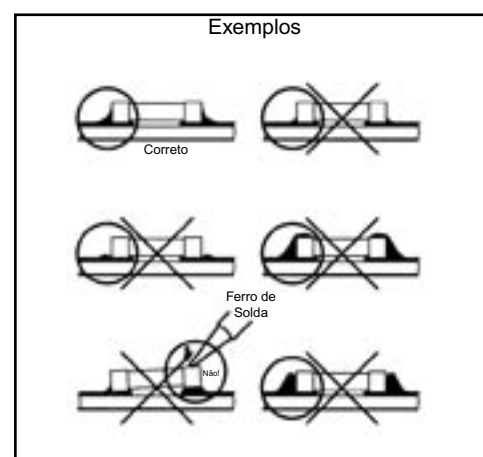
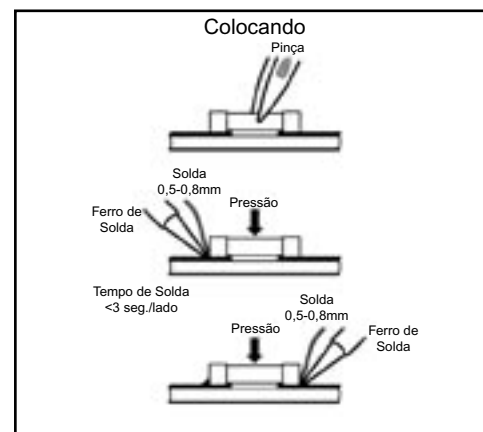
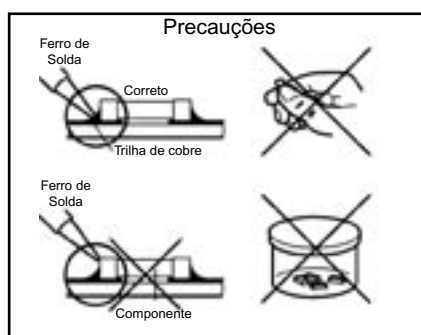
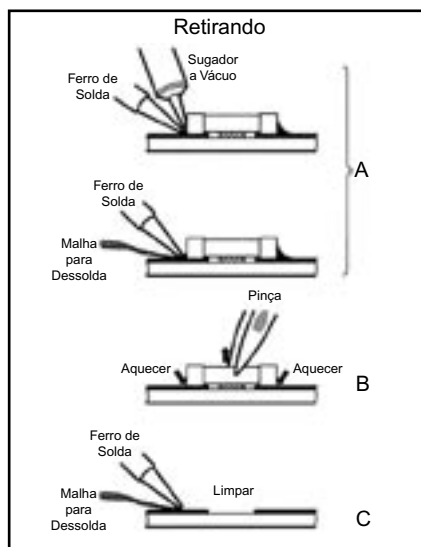
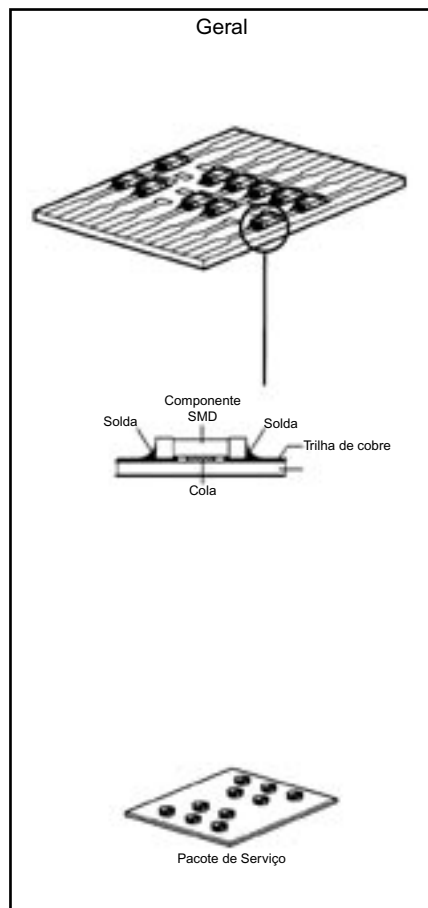


Gravador

Use um Cassete Universal de Teste **CrO2**
ou um Cassete Universal de Teste **Fe**



MANUSEANDO COMPONENTES SMD



Atenção!

Normas de segurança requerem que todos os ajustes sejam realizados para as condições normais e todos os componentes de reposição devem atender as especificações.

Advertência!

Todos os CI's e vários outros semicondutores são suscetíveis à descargas eletrostáticas (ESD).

A falta de cuidados no manuseio pode reduzir drasticamente a vida do componente.

Quando estiver reparando, certifique-se de estar conectado ao mesmo potencial de terra através de uma pulseira de aterramento com resistência.

Mantenha componentes e ferramentas também neste potencial.

Teste de risco de choque e incêndio

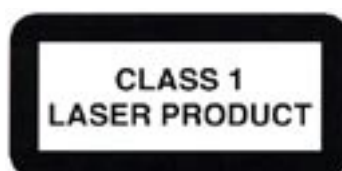
CUIDADO: Após reparar este aparelho e antes de devolvê-lo ao consumidor, meça a resistência entre cada pino do cabo de força (desconectado da tomada e com a chave Power ligada) e a face do painel frontal, botões de controle e a base do chassis.

Qualquer valor de resistência menor que 1 Megohms indica que o aparelho deve ser verificado /reparado antes de ser conectado à rede elétrica e verificado antes de retornar ao consumidor.



NOTA DE SEGURANÇA:

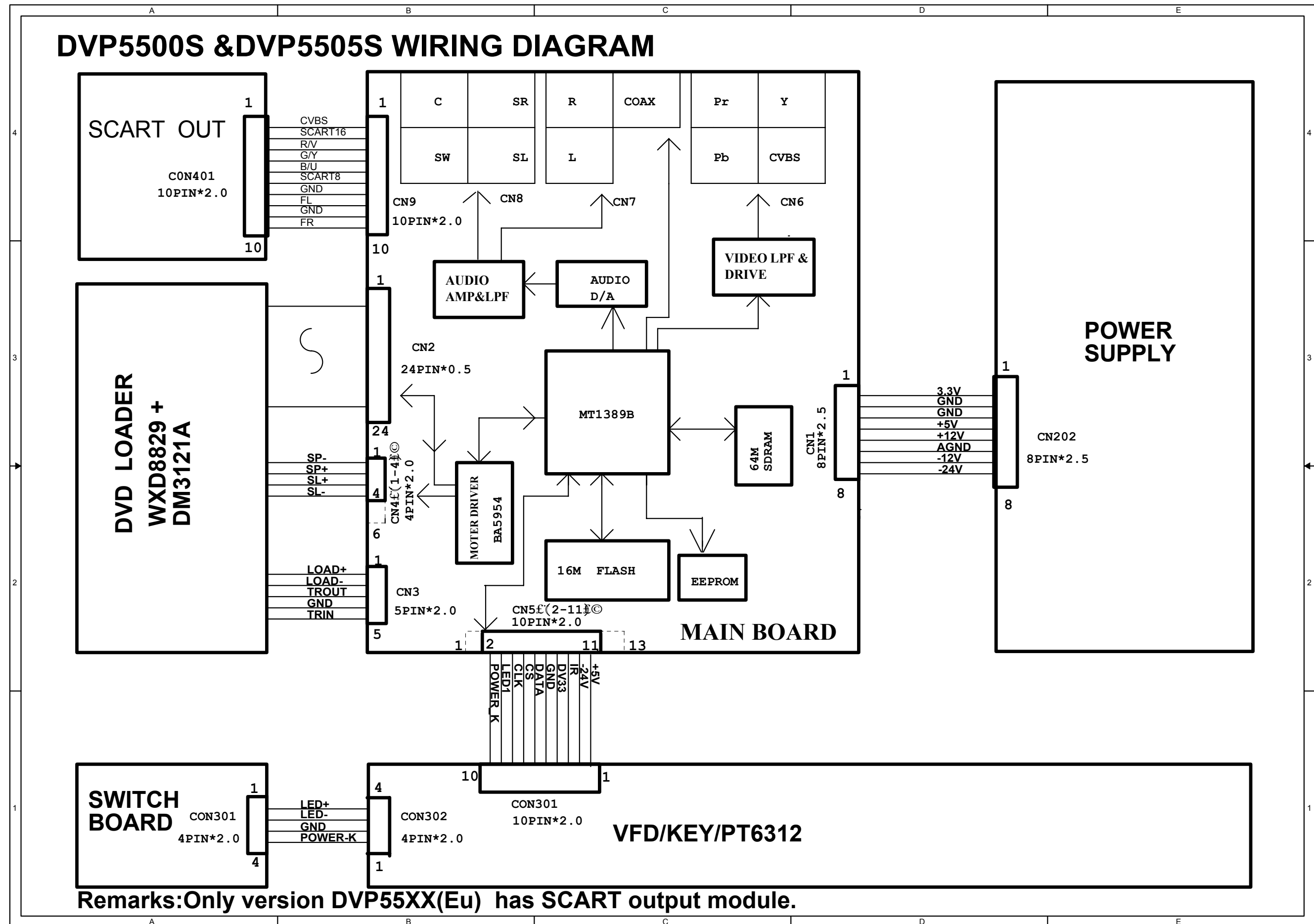
Risco de choque ou incêndio. Componentes marcados com o símbolo ao lado devem ser substituídos apenas por originais. A utilização de componentes não originais pode acarretar risco de incêndio ou choque elétrico.



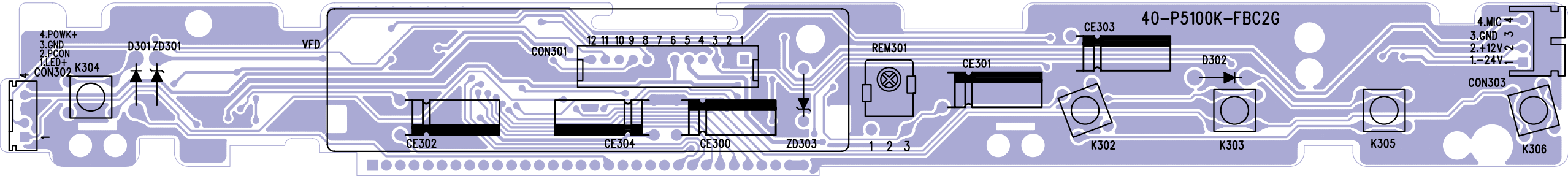
INSTRUÇÕES DE USO

Veja Manual de Usuário no GIP.

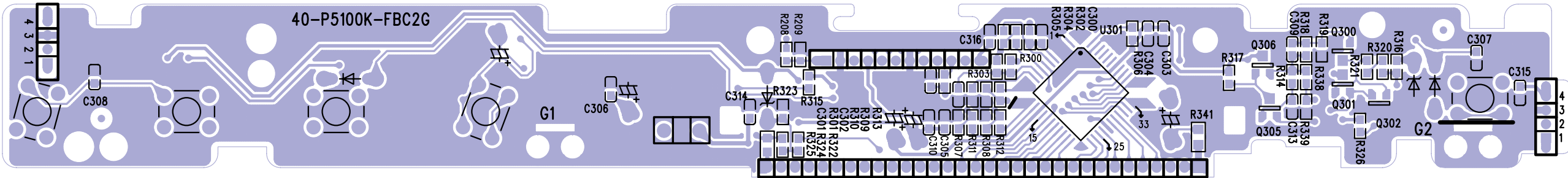
DIAGRAMA CONEXÕES



PAINEL FRONTAL - LAYOUT SUPERIOR



PAINEL FRONTAL - LAYOUT INFERIOR



PAINEL OK - LAYOUT SUPERIOR E INFERIOR

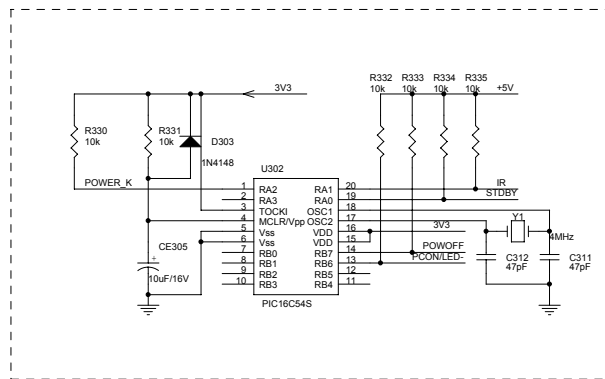
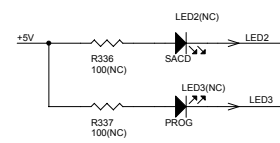
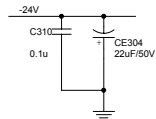
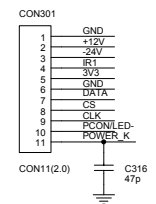


PAINEL FRONTAL

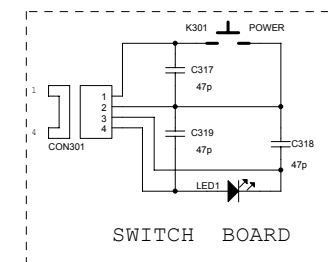
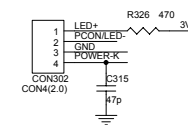
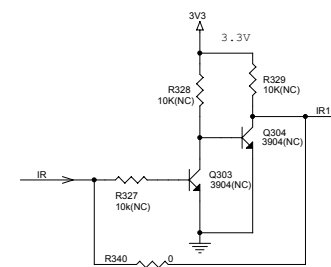
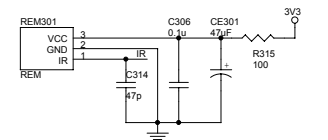
FRONT BOARD

For DVP5100; DVP5500S & DVP5505S

FROM MAIN BOARD

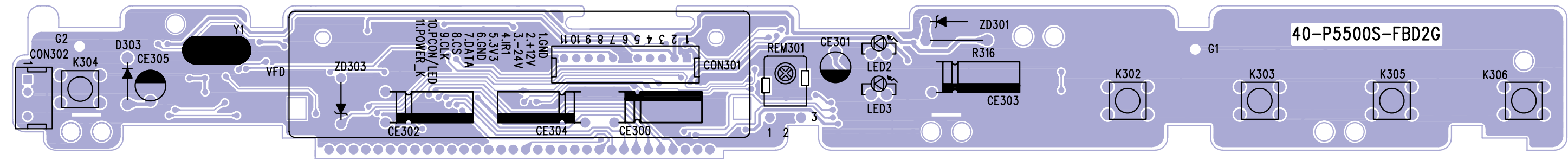


This inside of circle a piece is "OPEN"

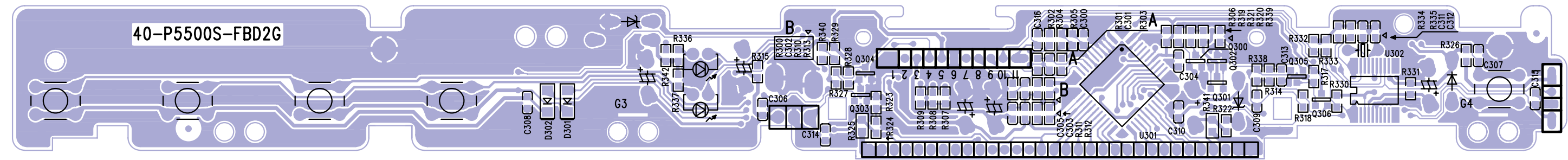


R300	C3	C304	C3
R301	C3	C305	B4
R302	C3	C306	D3
R303	C3	C307	C5
R304	C3	C308	C5
R305	C4	C309	B2
R306	C4	C310	C1
R307	C5	C311	E2
R308	C5	C312	E2
R309	D5	C313	B2
R310	D5	C314	E3
R311	C4	C315	E5
R312	C4	C316	B1
R313	C4	CE300	C3
R314	B2	CE301	D3
R315	E4	CE302	B3
R316	C3	CE303	B3
R317	B2	CE304	C1
R318	B2	CE305	E1
R319	B2	D301	C4
R320	B3	D302	C5
R321	B3	D303	E1
R322	B3	ZD301	C3
R323	B3	ZD303	B3
R324	B3	LED2	D1
R325	B3	LED3	D1
R326	E5	Q300	B3
R327	F3	Q301	B3
R328	F3	Q302	B3
R329	F3	Q303	E3
R330	E1	Q304	E3
R331	E1	Q305	B2
R332	E2	Q306	B2
R333	E2	K302	C4
R334	E2	K303	C4
R335	E2	K304	C4
R336	D1	K305	C5
R337	D1	K306	C5
R338	B2	U301	C4
R339	C2	U302	E1
R340	F3	Y1	E2
R341	B3	REM301	D3
R342	C3	CON301	B1
C300	C4	CON302	E5
C301	C3	CN301	F5
C302	C3	VFD	B4
C303	C3		

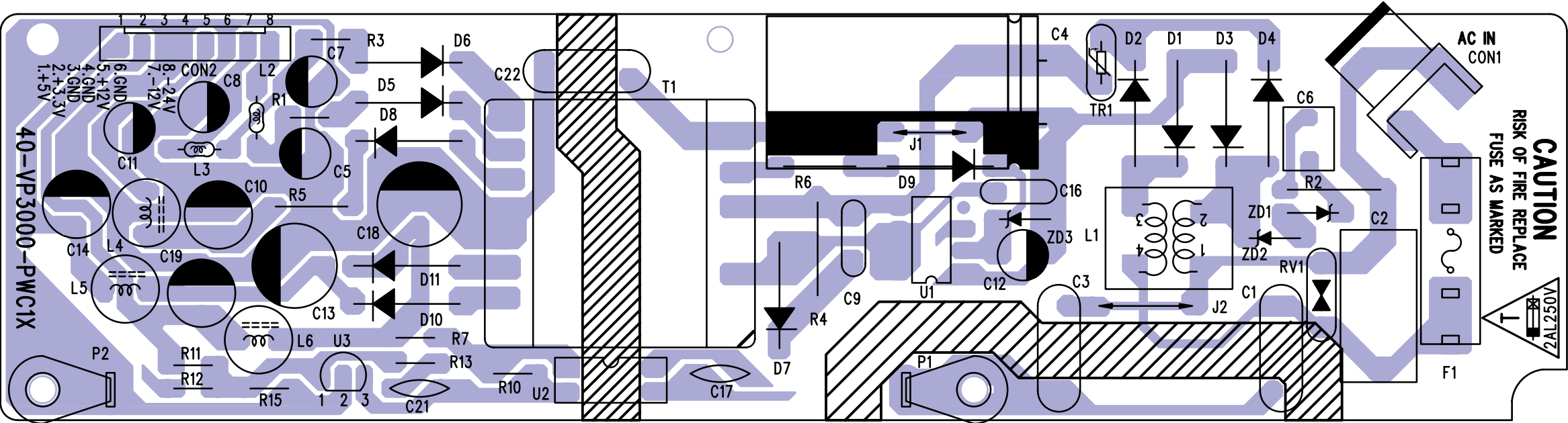
PAINEL FRONTAL - LAYOUT SUPERIOR (DVP5500S)



PAINEL FRONTAL - LAYOUT INFERIOR (DVP5500S)



PAINEL POWER - LAYOUT SUPERIOR



2i MPEG & SERVO
For DVP3000K(3005K)/93i DVP5500S & DVP5505S

A

B

C

D

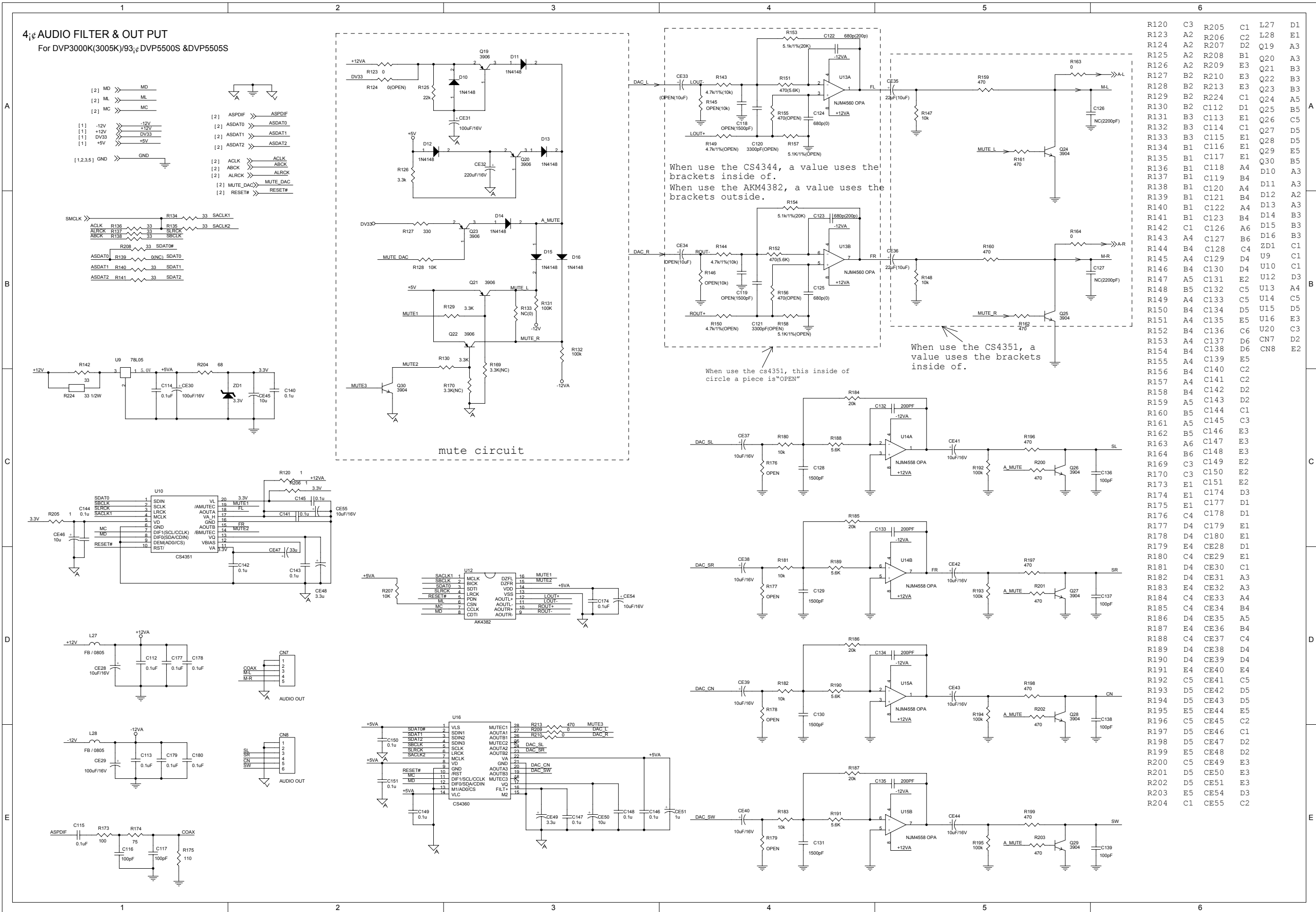
E

MT1389
Pin assignment version 1.5

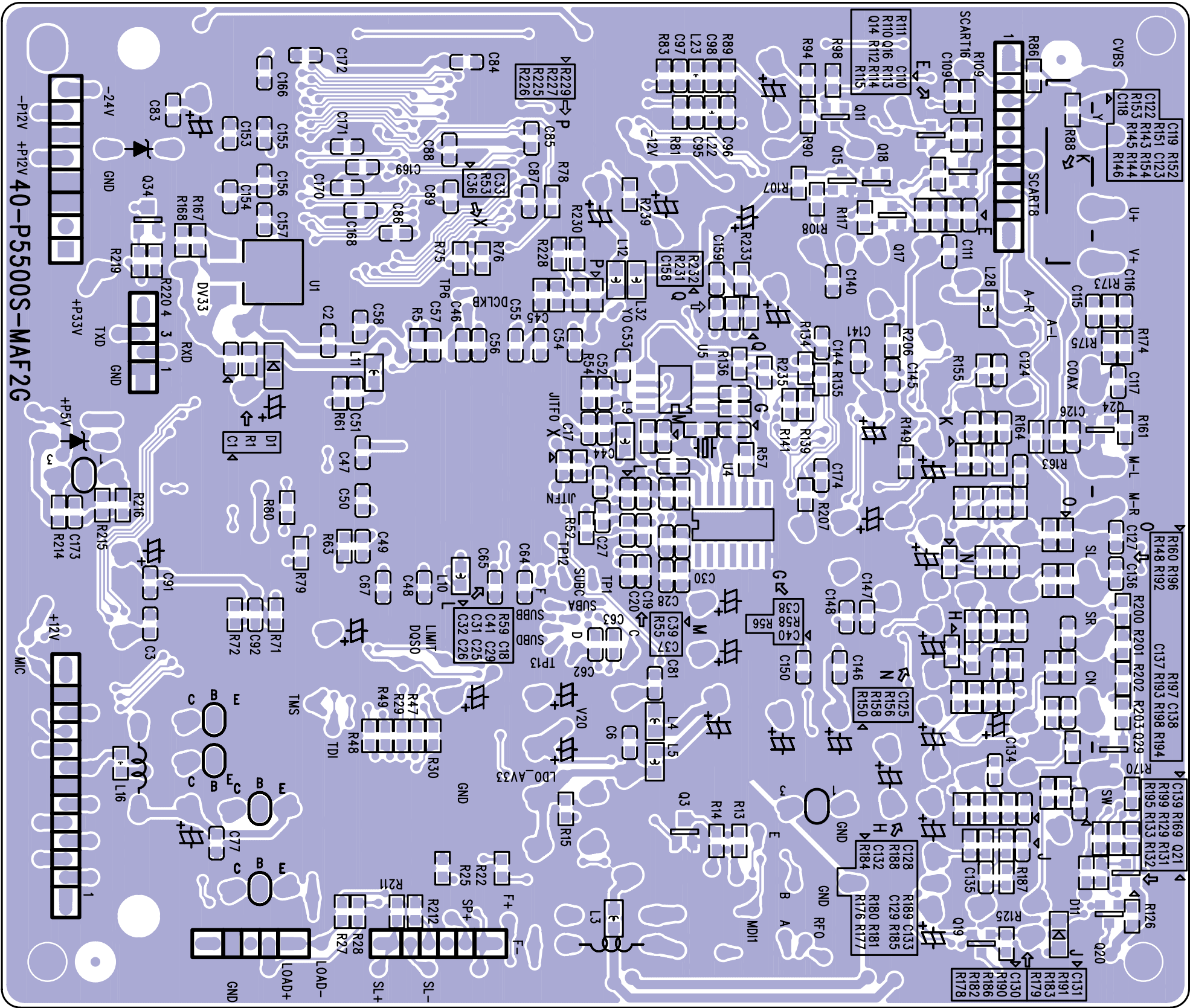
Component List Table:

Ref	Value	Ref	Value	Ref	Value	Ref	Value
R1	10k	R11	10k	R21	10k	R31	10k
R2	10k	R12	10k	R22	10k	R32	10k
R3	10k	R13	10k	R23	10k	R33	10k
R4	10k	R14	10k	R24	10k	R34	10k
R5	10k	R15	10k	R25	10k	R35	10k
R6	10k	R16	10k	R26	10k	R36	10k
R7	10k	R17	10k	R27	10k	R37	10k
R8	10k	R18	10k	R28	10k	R38	10k
R9	10k	R19	10k	R29	10k	R39	10k
R10	10k	R20	10k	R30	10k	R40	10k
R11	10k	R21	10k	R31	10k	R41	10k
R12	10k	R22	10k	R32	10k	R42	10k
R13	10k	R23	10k	R33	10k	R43	10k
R14	10k	R24	10k	R34	10k	R44	10k
R15	10k	R25	10k	R35	10k	R45	10k
R16	10k	R26	10k	R36	10k	R46	10k
R17	10k	R27	10k	R37	10k	R47	10k
R18	10k	R28	10k	R38	10k	R48	10k
R19	10k	R29	10k	R39	10k	R49	10k
R20	10k	R30	10k	R40	10k	R50	10k
R21	10k	R31	10k	R41	10k	R51	10k
R22	10k	R32	10k	R42	10k	R52	10k
R23	10k	R33	10k	R43	10k	R53	10k
R24	10k	R34	10k	R44	10k	R54	10k
R25	10k	R35	10k	R45	10k	R55	10k
R26	10k	R36	10k	R46	10k	R56	10k
R27	10k	R37	10k	R47	10k	R57	10k
R28	10k	R38	10k	R48	10k	R58	10k
R29	10k	R39	10k	R49	10k	R59	10k
R30	10k	R40	10k	R50	10k	R60	10k
R31	10k	R41	10k	R51	10k	R61	10k
R32	10k	R42	10k	R52	10k	R62	10k
R33	10k	R43	10k	R53	10k	R63	10k
R34	10k	R44	10k	R54	10k	R64	10k
R35	10k	R45	10k	R55	10k	R65	10k
R36	10k	R46	10k	R56	10k	R66	10k
R37	10k	R47	10k	R57	10k	R67	10k
R38	10k	R48	10k	R58	10k	R68	10k
R39	10k	R49	10k	R59	10k	R69	10k
R40	10k	R50	10k	R60	10k	R70	10k
R41	10k	R51	10k	R61	10k	R71	10k
R42	10k	R52	10k	R62	10k	R72	10k
R43	10k	R53	10k	R63	10k	R73	10k
R44	10k	R54	10k	R64	10k	R74	10k
R45	10k	R55	10k	R65	10k	R75	10k
R46	10k	R56	10k	R66	10k	R76	10k
R47	10k	R57	10k	R67	10k	R77	10k
R48	10k	R58	10k	R68	10k	R78	10k
R49	10k	R59	10k	R69	10k	R79	10k

PAINEL FILTRO DE ÁUDIO & SAÍDA



PAINEL MPEG - LAYOUT VISTA INFERIOR



PAINEL INDEX & POWER, RESET (DVP5505S)

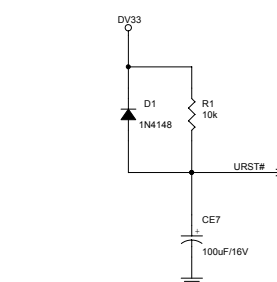
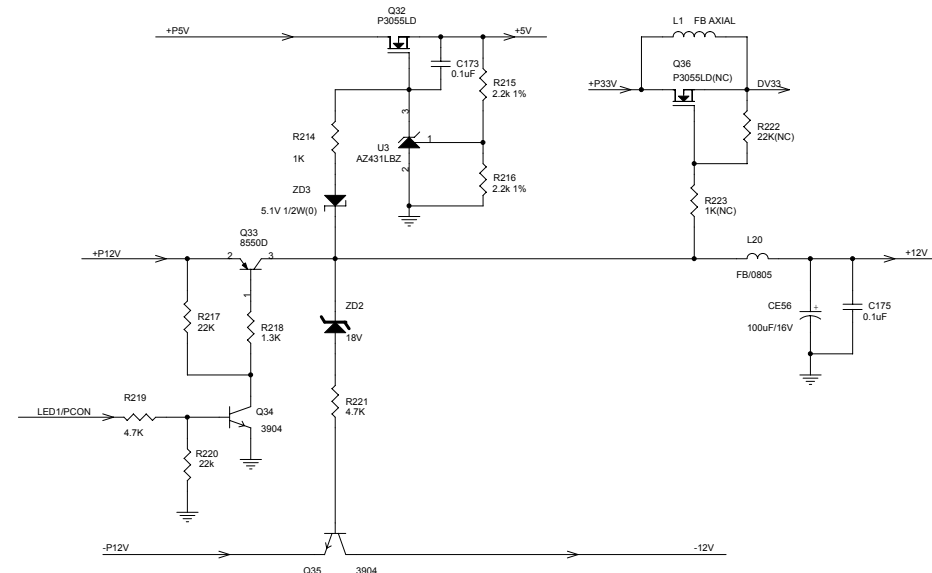
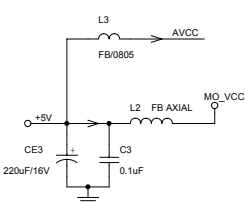
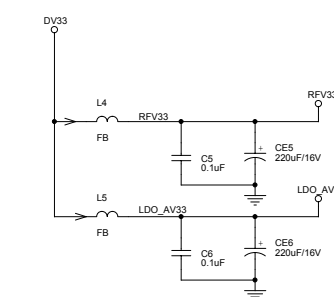
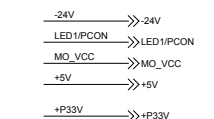
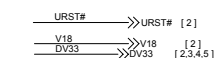
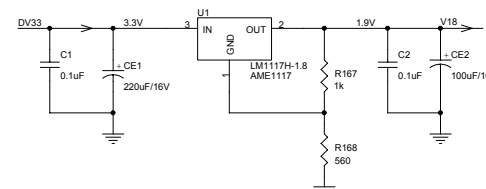
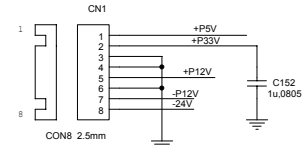
1₁ INDEX & POWER, RESET

For DVP5500S & DVP5505S

- 1 INDEX & POWER, RESET
- 2 RF, SERVO & MPEG - MT1389C&MT1389EE
- 3 MEMORY - SDRAM, FLASH/EEPROM, VIDEO OUT
- 4 AUDIO DAC & AUDIO OUT

NAME	TYPE	DEVICE
DV33	Digital 3.3V	MT1389E
RFV33	Servo 3.3V	MT1389E
LDO_AV33	Laser 3.3V	PICKUP HEADER
AVCC	RF 5V	PICKUP HEADER
V18	Digital 1.8V	MT1389E
+12VA	Audio +12V	OP AMP.
-12VA	Audio -12V	OP AMP.
MO_VCC	Servo 5V	Motor drive
+5V	MUTE 5V	MUTE drive
+5VA	Audio D/A 5V	Audio D/A SUPPLY
-24V	VFD	VFD Drive

TO POWER BOARD



R1 E5
R167 C3
R168 D3
R214 D3
R215 D3
R216 D3
R217 E3
R218 E3
R219 E2
R220 E3
R221 E3
R222 D4
R223 D4
ZD2 E3
ZD3 E3
D1 E5
CN1 D1
C1 C3
C2 C4
C3 E1
C5 D5
C6 D5
C152 C2
C173 D3
C175 E4
CE1 C3
CE2 C4
CE3 E1
CE5 D5
CE6 D5
CE7 E5
CE56 E4
L1 D4
L2 E1
L3 E1
L4 C5
L5 D5
L20 E4
Q32 D3
Q33 E3
Q34 E3
Q35 F3
Q36 D3
U1 C3
U20 D3

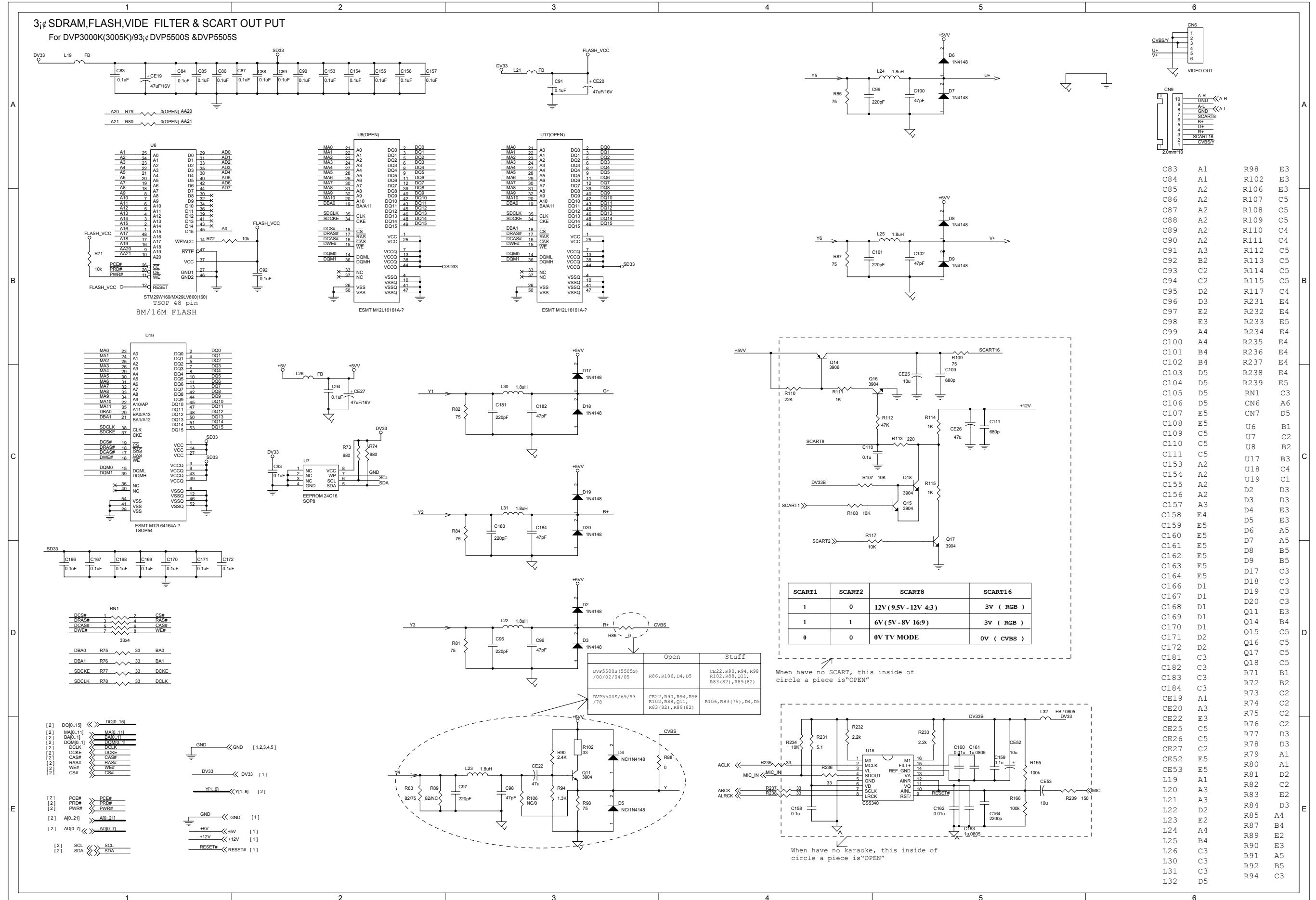
2; MPEG & SERVO
For DVP3000K(3005K)/93, DVP5500S & DVP5505S

MT1389
Pin assignment version 1.5

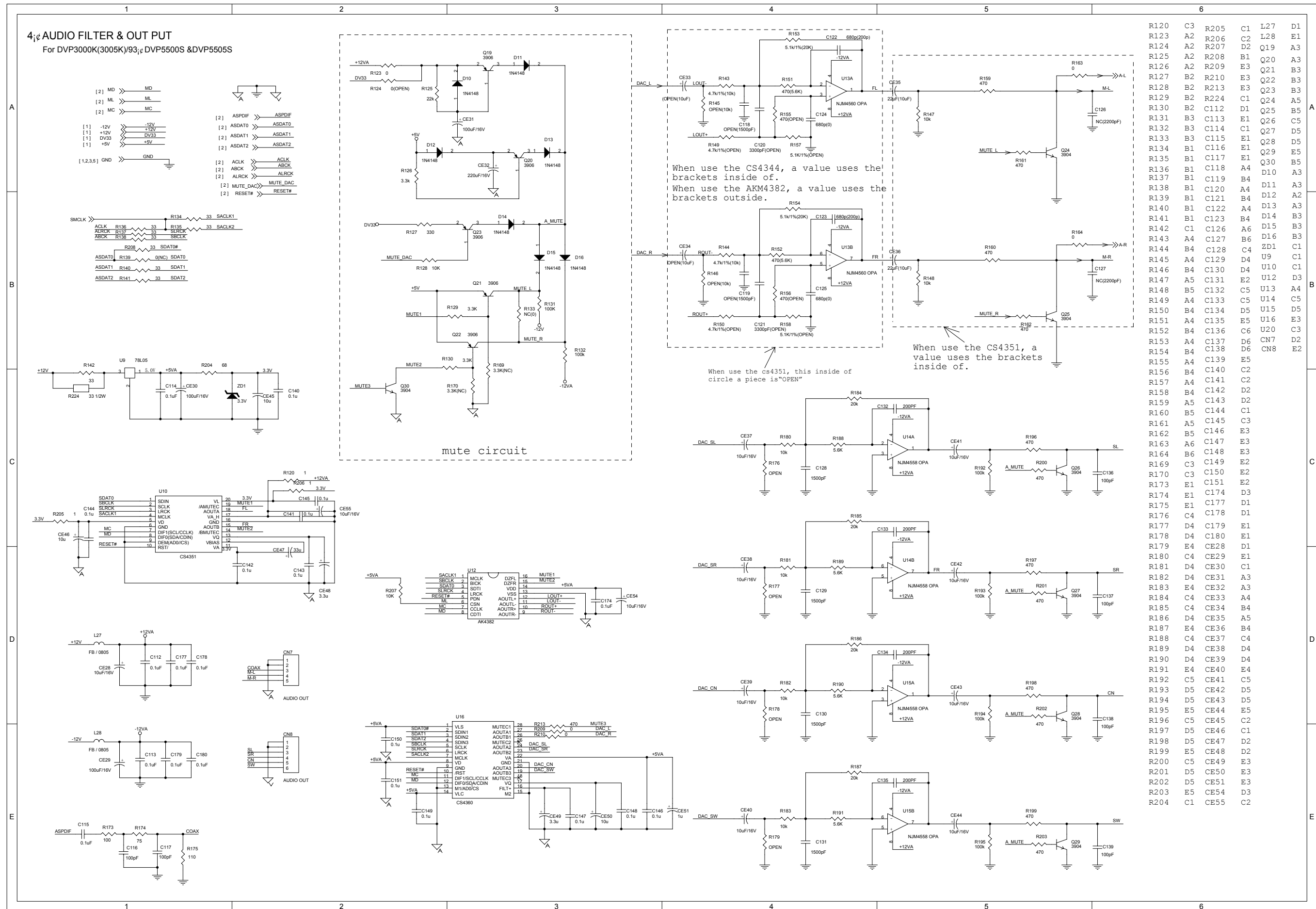
Pin Assignment Table:

Pin	Signal	Pin	Signal	Pin	Signal
CN2	C1	C67	C2	R41	E2
CN3	E4	C68	D2	R42	E4
CON3	E5	C69	D3	R43	E4
CN4	A1	C70	D3	R44	E4
CN5	A6	C71	D3	R45	E4
CN6	E5	C72	D3	R46	E4
C4	C1	C73	D1	R47	D3
C7	A2	C74	E1	R48	D3
C8	A2	C75	D1	R49	D3
C9	C1	C76	D2	R50	D3
C10	C1	C77	E2	R51	A2
C11	D1	C78	E4	R52	A3
C12	A2	C79	E3	R53	A3
C13	A2	C80	E4	R54	A4
C14	A1	C81	B1	R55	A4
C15	A2	C82	A6	R56	A4
C16	A1	C185	A6	R57	A5
C17	A2	C186	A6	R58	A5
C18	A2	CE8	C1	R59	A5
C19	A2	CE9	C2	R60	B5
C20	A2	CE10	E2	R61	D3
C21	A2	CE11	E2	R62	D3
C22	A2	CE12	A2	R63	D2
C23	A3	CE13	A2	R64	A6
C24	A3	CE14	A2	R65	A6
C25	A3	CE15	A1	R66	D3
C26	A3	CE16	A3	R67	A6
C27	A3	CE17	B5	R68	A6
C28	A3	CE18	D2	R69	A6
C29	A3	R2	A1	R70	A6
C30	A3	R3	A1	R116	A1
C31	A3	R4	A1	R118	A1
C32	A3	R5	B1	R211	A1
C33	A3	R6	A1	R212	A1
C34	A3	R7	A1	R225	B5
C35	A3	R8	A2	R226	B5
C36	A3	R9	B1	R227	B5
C37	A4	R10	B1	R228	B5
C38	A5	R11	B1	R229	B5
C39	A4	R12	B1	R230	B5
C40	A4	R13	C1	L6	C1
C41	A5	R14	C1	L7	C1
C42	B4	R15	C1	L8	C1
C43	B5	R16	D1	L9	A2
C44	D4	R17	D1	L10	C2
C45	D4	R18	D1	L11	C5
C46	D4	R19	D2	L12	B5
C47	D5	R20	D2	L13	A6
C48	D5	R21	D1	L14	A6
C49	E3	R22	D1	L15	A6
C50	E3	R23	D1	L16	A6
C51	E3	R24	D1	L17	A6
C52	D4	R25	D2	L18	A6
C53	D4	R26	D2	L19	A6
C54	D4	R27	D2	L20	B1
C55	D4	R28	D2	L21	B1
C56	D4	R29	D2	L22	B1
C57	D5	R30	D2	L23	C1
C58	D5	R31	D2	L24	D1
C59	B2	R32	D2	L25	E4
C60	B2	R33	D2	L26	E4
C61	B2	R34	D1	L27	E4
C62	B2	R35	D2	L28	E4
C63	B2	R36	D2	L29	C3
C64	B2	R37	E1	L30	D1
C65	B2	R38	E2	L31	A4
C66	C2	R39	E3	L32	A6
		R40	E4	L33	A4

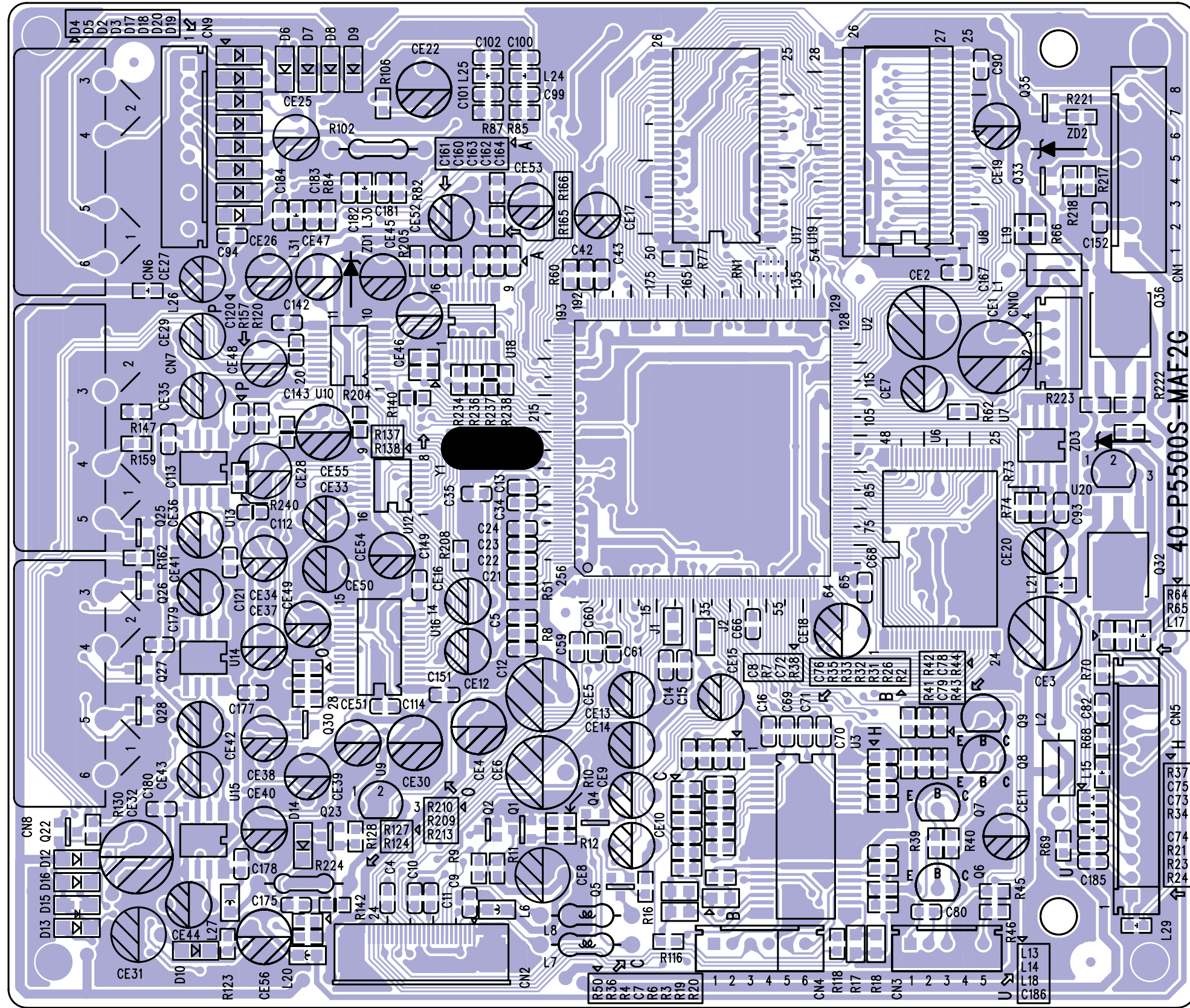
PAINEL SDRAM, FLASH, FILTRO DE VÍDEO & SAÍDA SCART (DVP5505S)



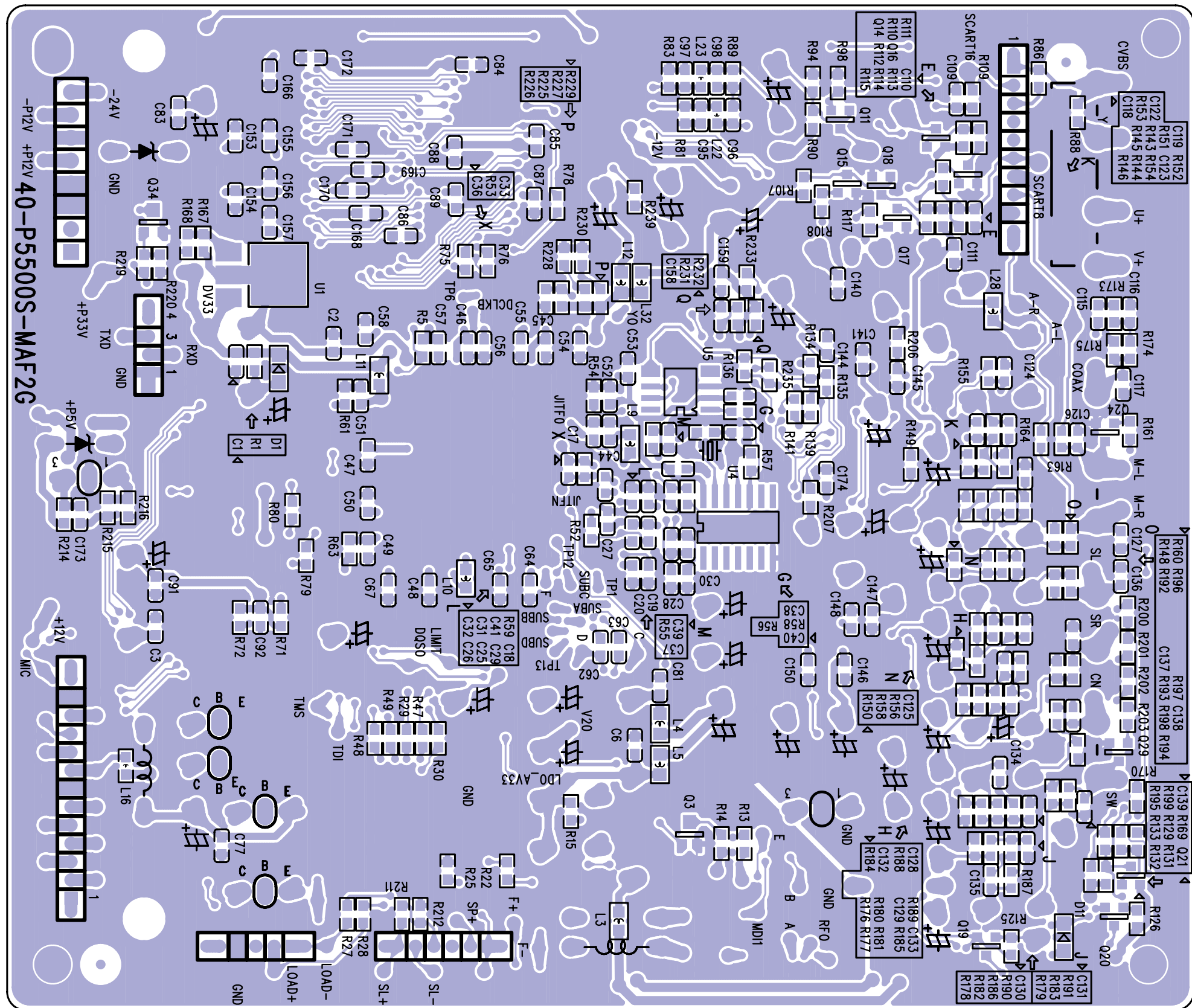
PAINEL FILTRO DE ÁUDIO & SAÍDA (DVP5505S)



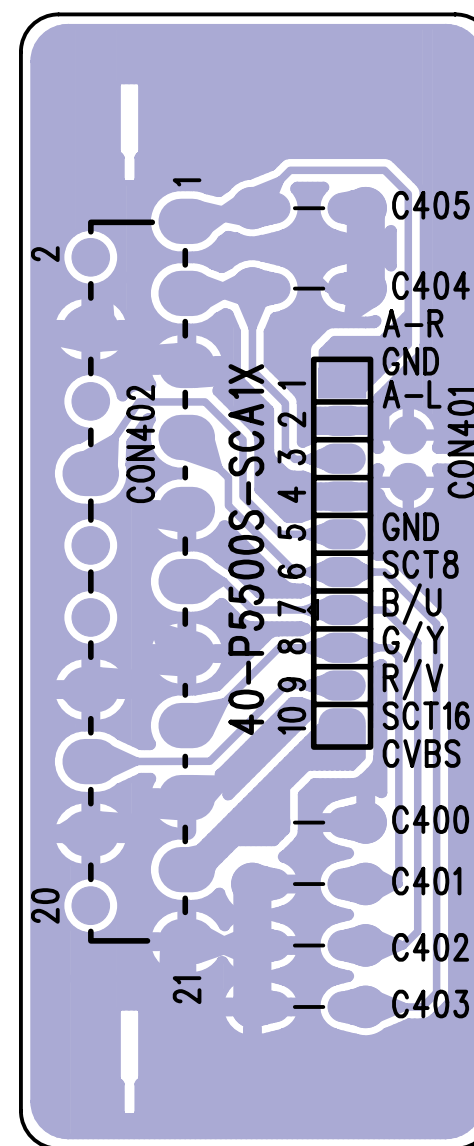
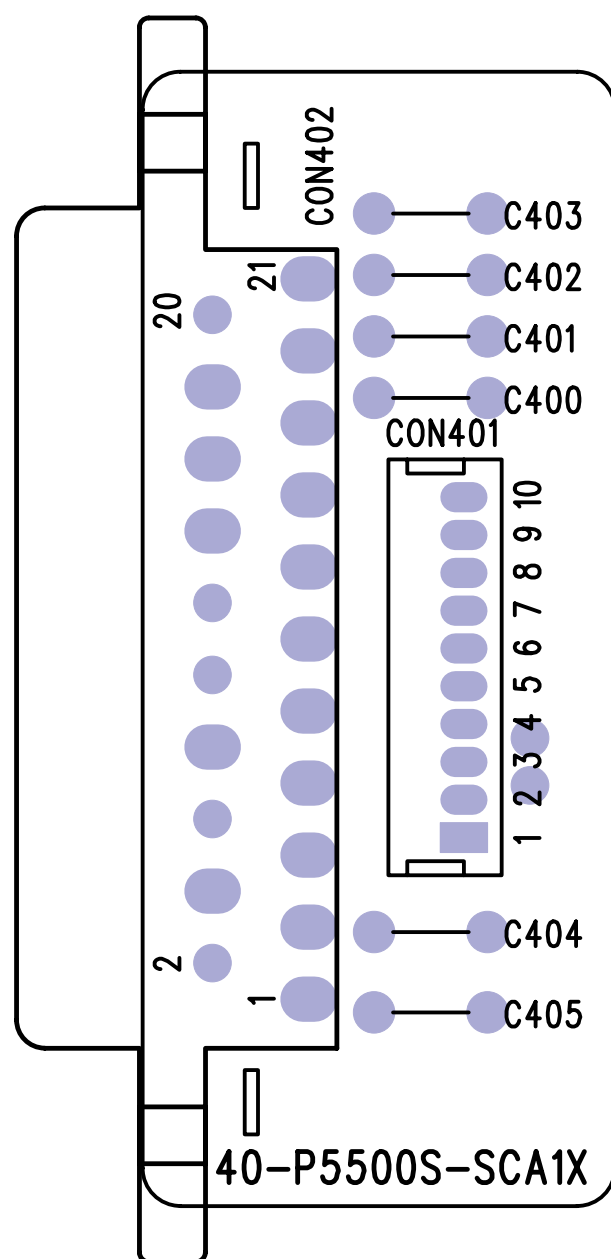
PAINEL MPEG - LAYOUT VISTA SUPERIOR (DVP5505S)



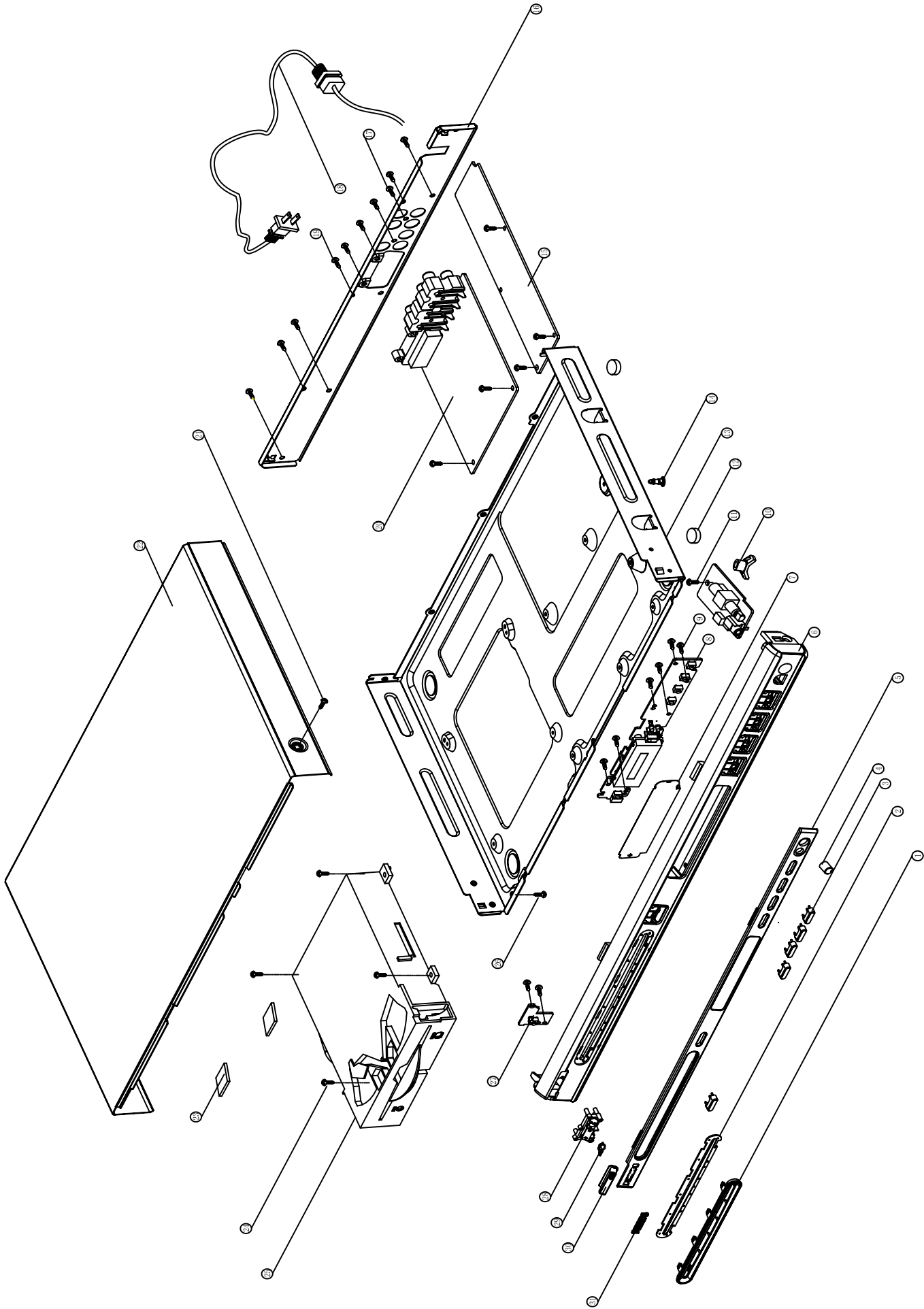
PAINEL MPEG - LAYOUT VISTA INFERIOR (DVP5505S)



PAINEL SCART - LAYOUT VISTA SUPERIOR E INFERIOR



VISTA EXPLODIDA



VISTA EXPLODIDA (DVP5500S & DVP5505S)

