

HISTORY

**Model Name: KDL-22/26/32BX300
KDL-40BX400
SERVICE MANUAL**

Click on Page Number to display details of change

[illegible]

SERVICE MANUAL

Self Diagnosis
Supported model

AZ1-A(5-2) CHASSIS

MODEL	DEST	MODEL	DEST
KLV-22BX300	RUSS	KLV-32BX300	RUSS
KLV-26BX300	RUSS	KLV-40BX400	RUSS



RM-GA019

FLAT PANEL COLOR TV
SONY®

TABLE OF CONTENTS

<u>Section Title</u>	<u>Page</u>	<u>Section Title</u>	<u>Page</u>
1. SAFETY NOTES		5. DIAGRAMS	
1-1. Caution Handling of LCD Panel	3	5-1. Block Diagram	11
1-2. Safety Check Out	3	5-1-1. KLV-22, 26, 32 BX300	11
1-3. Leakage Test	3	5-1-2. KLV-40BX400	12
1-4. WARNING !	3	5-2. Wire Dressing and Connector Diagram	13
1-5. Lead Free Information	4	5-2-1. KLV-22BX300	13
1-6. Attachment & Detachment of MDF61 Connector	4	5-2-2. KLV-26BX300	14
1-7. Attachment, Detachment & Confirmation of Lock Condition of JST IBH Connector	4	5-2-3. KLV-32BX300	15
		5-2-4. KLV-40BX400	16
2. SELF DIAGNOSTIC FUNCTION		5-3. Circuit Board Location	17
2-1. Overview of Control Buttons	5	5-3-1. KLV-22BX300	17
2-2. LED Display Specification	5	5-3-2. KLV-26BX300	17
2-3. LED Display Control	5	5-3-3. KLV-32BX300	17
2-4. LED Pattern	5	5-3-4. KLV-40BX400	17
2-5. Standby LED Error Display and Board Replacement Order	6		
2-6. Triage Chart	7	6. DISASSEMBLY, EXPLODED VIEWS AND OTHER PARTS	
3. TROUBLE SHOOTING		6-1. Disassembly & Exploded Views	18
3-1. Flowchart	8	6-1-1. KLV-22BX300	18
3-1-1. No Power	8	6-1-2. KLV-26BX300	19
3-1-2. Video Problem	9	6-1-3. KLV-32BX300	20
3-1-3. Audio Problem	9	6-1-4. KLV-40BX400	21
4. SERVICE ADJUSTMENTS		6-2. Other Parts	22
4-1. Accessing Self Diagnostic Menu	10	6-2-1. KLV-22BX300	22
4-2. Accessing Service Mode	10	6-2-2. KLV-26BX300	22
4-3. GAISOU Adjustment	10	6-2-3. KLV-32BX300	23
		6-2-4. KLV-40BX400	24

SECTION 1 SAFETY NOTES

1-1. Caution Handling of LCD Panel

When installing the LCD Panel, make sure you are grounded with a wrist band.

When installing the LCD Panel on the wall, the panel must be secured using the 4 mounting holes on the rear cover.

- 1) Do not press the panel or frame edge to avoid the risk of electric shock.
- 2) Do not scratch or press on the panel with any sharp objects.
- 3) Do not leave the module in high temperature or in areas of high humidity for an extended period of time.
- 4) Do not expose the LCD panel to direct sunlight.
- 5) Avoid contact with water. It may cause short circuit within the module.
- 6) Disconnect the AC adapter when replacing the backlight (CCFL) or inverter circuit. (High voltage occurs at the inverter circuit at 650Vrms)
- 7) Always clean the LCD panel with a soft cloth material.
- 8) Use care when handling the wires or connectors of the inverter circuit. Damaging the wires may cause a short circuit.
- 9) Protect the panel from ESD to avoid damaging the electronic circuit (C-MOS).

1-2. Safety Check-Out

After correcting the original service problem, perform the following safety checks before releasing the set to the customer:-

- 1) Check the area of your repair for unsoldered or poorly soldered connections. Check the entire board surface for solder splashes and bridges.
- 2) Check the interboard wiring to ensure that no wires are "pinched" or contact high-wattage resistors.
- 3) Check all control knobs, shields, covers, ground straps and mounting hardware have been replaced. Be absolutely certain you have replaced all the insulators.
- 4) Look for unauthorized replacement parts, particularly transistors that were installed during a previous repair. Point them out to the customer and recommend their replacement.
- 5) Look for parts which, though functioning show obvious signs of deterioration. Point them out to the customer and recommend their replacement.
- 6) Check the line cords for cracks and abrasion. Recommend the replacement of any such line cord to the customer.
- 7) Check the antenna terminals, metal trim, "metallized" knobs, screws and all other exposed metal parts for AC leakage. Check leakage test as described next.
- 8) Live chassis can cause electric shock as its connected to the AC power line. Therefore, use isolation transformer and gloves when changing parts or removing plug. Please remember high voltage is there during servicing.
- 9) To follow safety after servicing, please make sure the removed screws, parts and wires are as original condition.

1-3. Leakage Test

The AC leakage from any exposed metal part to earth ground and from all exposed metal parts to any exposed metal part having a return to chassis must not exceed 0.5mA (500 microamperes). Leakage current can be measured by any one of the three methods:-

1. A commercial leakage tester such as the SIMPSON 229 or RCA WT-540A. Follow the manufacturers instructions to use those instructions.
2. A battery-operated AC milliammeter. The DATA PRECISION 245 digital multimeter is suitable for this job.
3. Measuring the voltage drop across a resistor by means of a VOM or battery operated AC voltmeter. The 'limit' indication is 0.75V so analog meters must have an accurate low voltage scale. The SIMPSON'S 250 and SANWA SH-63TRD are examples of passive VOMs that are suitable. Nearly all battery operated digital multimeters that have a 2 VAC range are suitable. (see Figure 1.)

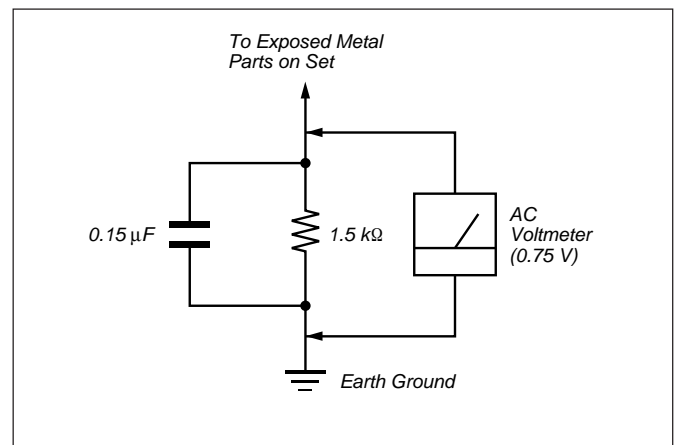


Figure 1. AC voltmeter to check AC leakage

1-4. WARNING !

SAFETY-RELATED COMPONENT WARNING!
COMPONENTS IDENTIFIED BY SHADING AND MARK \triangle ON THE EXPLODED VIEWS ARE CRITICAL FOR SAFE OPERATION. REPLACE THESE COMPONENTS WITH SONY PARTS WHOSE PART NUMBERS APPEAR AS SHOWN IN THIS MANUAL OR IN SUPPLEMENTS PUBLISHED BY SONY. CIRCUIT ADJUSTMENTS THAT ARE CRITICAL FOR SAFE OPERATION ARE IDENTIFIED IN THIS MANUAL. FOLLOW THESE PROCEDURES WHENEVER CRITICAL COMPONENTS ARE REPLACED OR IMPROPER OPERATION IS SUSPECTED.

1-5. Lead Free Information

The circuit boards used in these models have been processed using Lead Free Solder. The boards are identified by the LF logo located close to the board designation.



Figure 2: LF logo

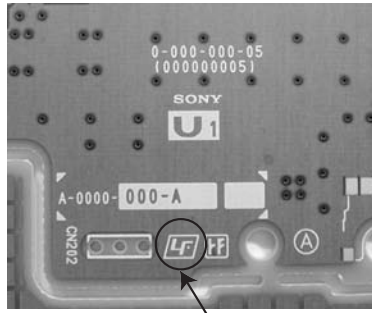


Figure 3: LF logo on circuit board

The servicing of these boards requires special precautions. It is strongly recommended to use Lead Free Solder material in order to guarantee optimal quality of new solder joints. Lead Free Solder is available under the following part numbers:-

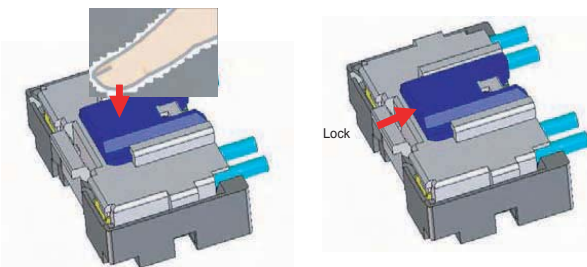
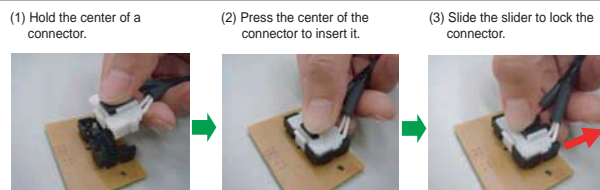
Part number	Diameter	Remarks
7-640-005-19	0.3mm	0.25Kg
7-640-005-20	0.4mm	0.50Kg
7-640-005-21	0.5mm	0.50Kg
7-640-005-22	0.6mm	0.25Kg
7-640-005-23	0.8mm	1.00Kg
7-640-005-24	1.0mm	1.00Kg
7-640-005-25	1.2mm	1.00Kg
7-640-005-26	1.6mm	1.00Kg

Due to high melting point of Lead Free Solder, the soldering iron tip temperature needs to be set to 370 degrees centigrade. This requires soldering equipment capable of accurate temperature control coupled with a good heat recovery characteristics.

For more information on the use of Lead Free Solder, please refer to <http://www.sony-training.com>

1-6. Attachment & Detachment of MDF61 Connector (If applicable for these models)

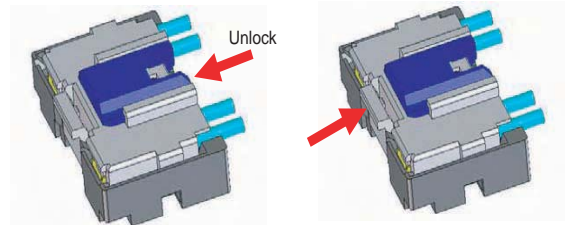
a) Insertion



b) Detachment

(1) Slide the slider to release the slider lock.

(2) Press the center lock tab to release the lock and pull the connector up.

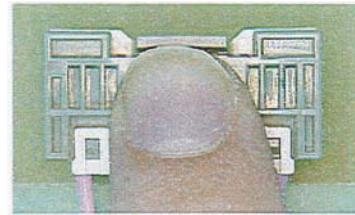


1-7. Attachment, Detachment & Confirmation of Lock Condition of JST IBH Connector (If applicable for these models)

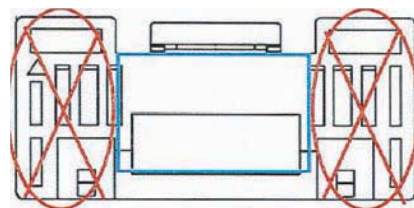
Attention: This is a **SAFETY CRITICAL PROCESS**.

a) Attachment

(1) Press the center of the connector to insert it.



(2) Press position
(NG for red marking portion)



(3) Prohibited matter (Refer Figure A~C explanation)

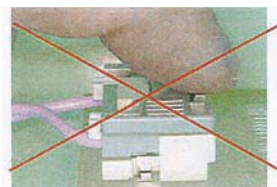


Figure A

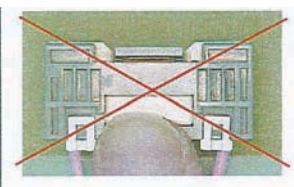


Figure B

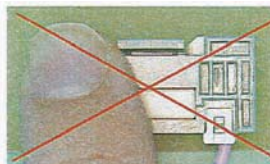


Figure C

Figure A: Do not press lock portion.

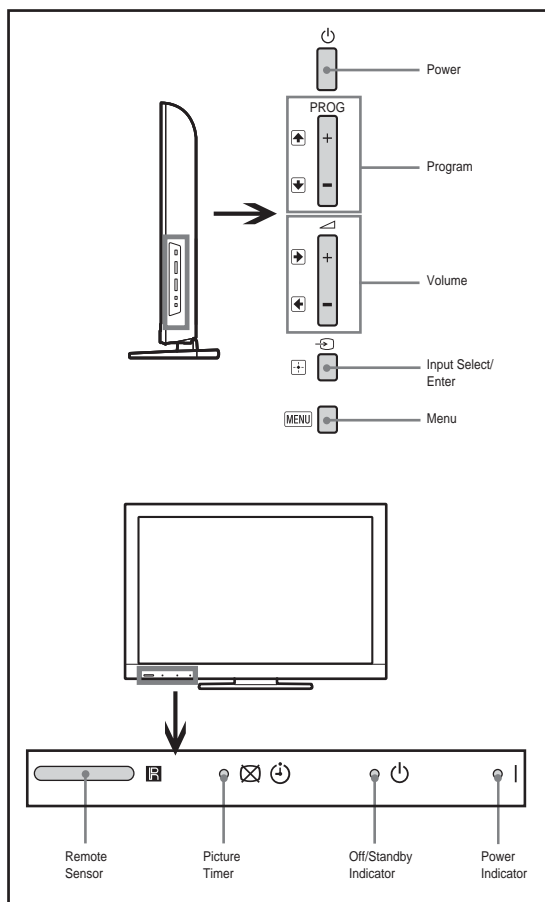
Figure B: Do not press the front side of the connector.

Figure C: Do not press the side of the connector.

SECTION 2

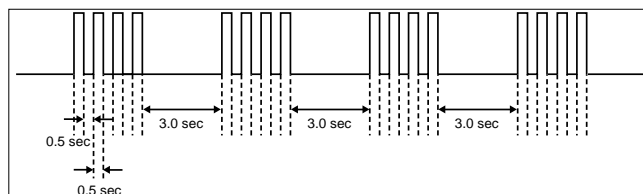
SELF DIAGNOSTIC FUNCTION

2-1. Overview of Control Buttons



2-4. LED Pattern

When safety shutdown occurs, Standby LED display reports the cause by using the lightning patterns as indicated below.



Example:

The figure above shows LED display when SHUTDOWN is caused by Balancer Error. It repeats flashing for a specified number of times in 0.5sec/cycle and has a 3 seconds interval of lighting off. Please note that a 3 seconds interval of lighting off is fixed regardless of abnormal state types.

2-2. LED Display Specification

LED Type	Description	Remark
POWER	Green: LED	Green lights at power ON.
STANDBY	Red: One LED	Red lights during standby.
Timer/ Pic off	Orange/Green : Two LEDs	Green Lights during Picture Off and Orange Lights during Timer activation.

2-3. LED Display Control

Status	LED Display			Remark
	Power	Stand By	Pic Off/Connecting/Timer	
Power On	Green	Off	Off	
Standby	Off	Red	Off	
Self Diagnosis	Off	Red	Off	Refer to Blinking pattern selfdiagnosis mode
Error of panel ID	Green	Off	Orange	0.5sec On / 0.5sec Off
Others (Example)				
[REC][Sleep Timer][Power ON]	Red	Off	Orange	
[Picture Off][On Timer][REC][Power On]	Red	Off	Green	

2-5. Standby LED Error Display and Board Replacement Order

Perform below countermeasure according Standby LED blinking times

Blinking times	Error	Countermeasure (Replace either/all according to sequence)
2	Main Power Error	1. GD1 (22"), POWER UNIT(G1LS) (26"), G2LE (32"), G2HE (40") 2. BAA board
3	DC_ALERT1/ Audio Error/ Motionflow Error	1. BAA board 2. GD1 (22"), POWER UNIT(G1LS) (26"),G2LE (32"), G2HE (40") 3. TCON 4. Speaker
4	Balancer Error	1. Inverter board 2. Panel 3. GD1 (22") , POWER UNIT(G1LS) (26"), G2LE (32"), G2HE (40") 4. BAA board
5	T-CON Error/ Panel ID NVM Error	1. T-CON 2. BAA 3. LVDS Cable 4. GD1 (22") , POWER UNIT(G1LS) (26"),G2LE (32"), G2HE (40")
6	Backlight Error	1. Inverter board 2. GD1 (22") , POWER UNIT(G1LS) (26"),G2LE (32"), G2HE (40") 3. BAA
7	Temp Error	1. BAA 2. GD1 (22") , POWER UNIT(G1LS) (26"), G2LE (32"), G2HE (40")

Note1: Each of the above blinking repeats 3 seconds.

Note2: Countermeasure is list out by priority.

2-6. Triage Chart

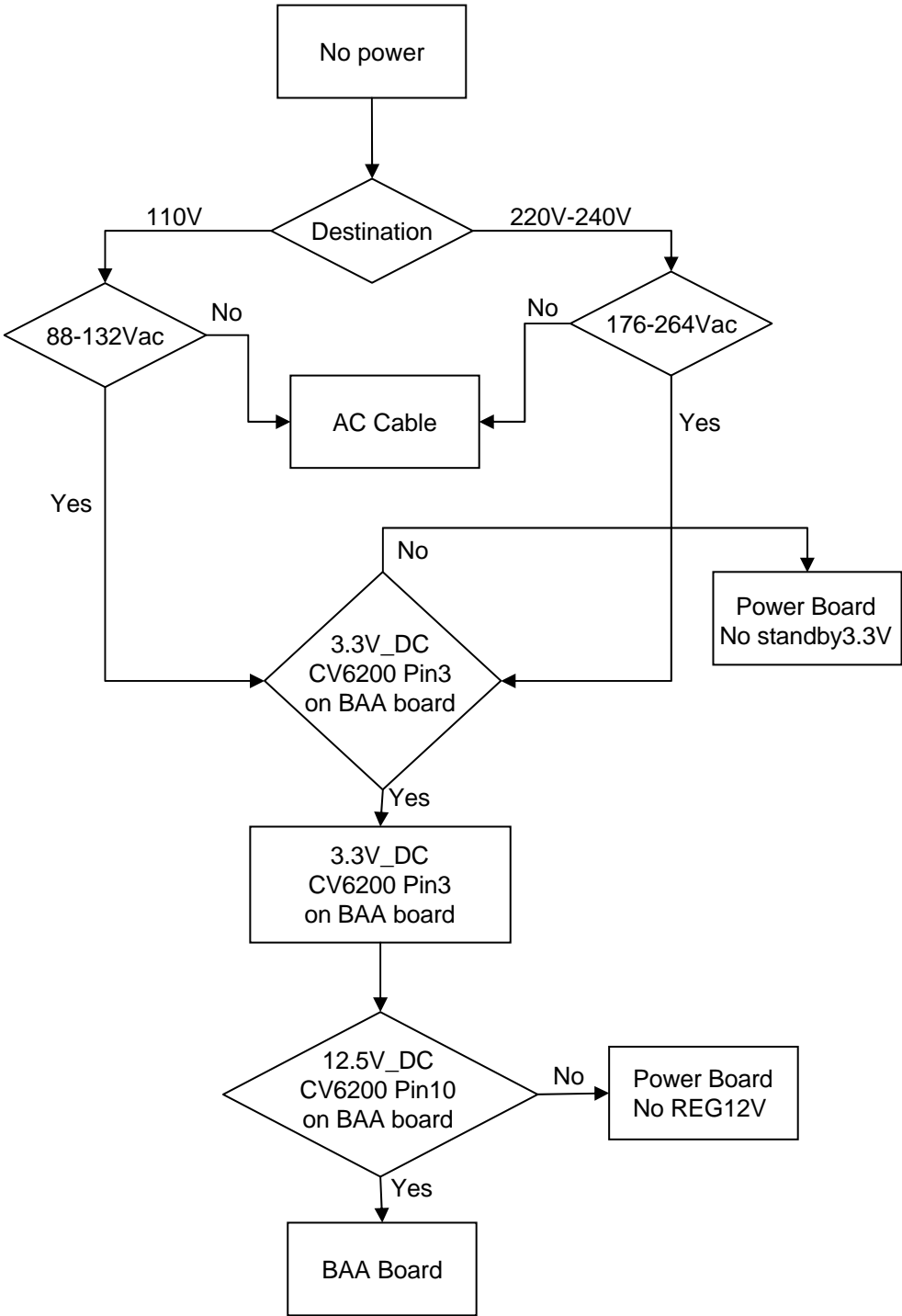
Reference	Symptom (dead set)						Video distorted or missing							
	2Blinks	3Blinks	4Blinks	5Blinks	6Blinks	7Blinks	No Power	No Video BL OK OSD OK	No Video No BL	No Video BL OK No OSD	No Tuner Video OK	Tuner OK Video 1-3 Bad	No HDMI	No Audio
BAA board	●	●		▲		▲	●	●	●	●	●	●	●	●
GD1 (22")	●				●	●	●		●					●
G1LS (26")	●				●	●	●		●					●
G2LE (32")	●				●	●	●		●					●
G2HE (40")	●				●	●	●		●					●
GD2 (46")	●				●	●	●		●					●
T-con board		●		●		●				▲				
Speaker unit		●												●
RF module											●			
Panel module			●											
FFC cable		▲								●				
Joint connector									●					
Problem	No Power	BAA board	Balancer	TCON, Panel ID	Inverter	Temperature	No Power	BAA board	BAA board	BAA board	BAA board	BAA board	BAA board	BAA board

- Doubtful part
- ▲ few possibility

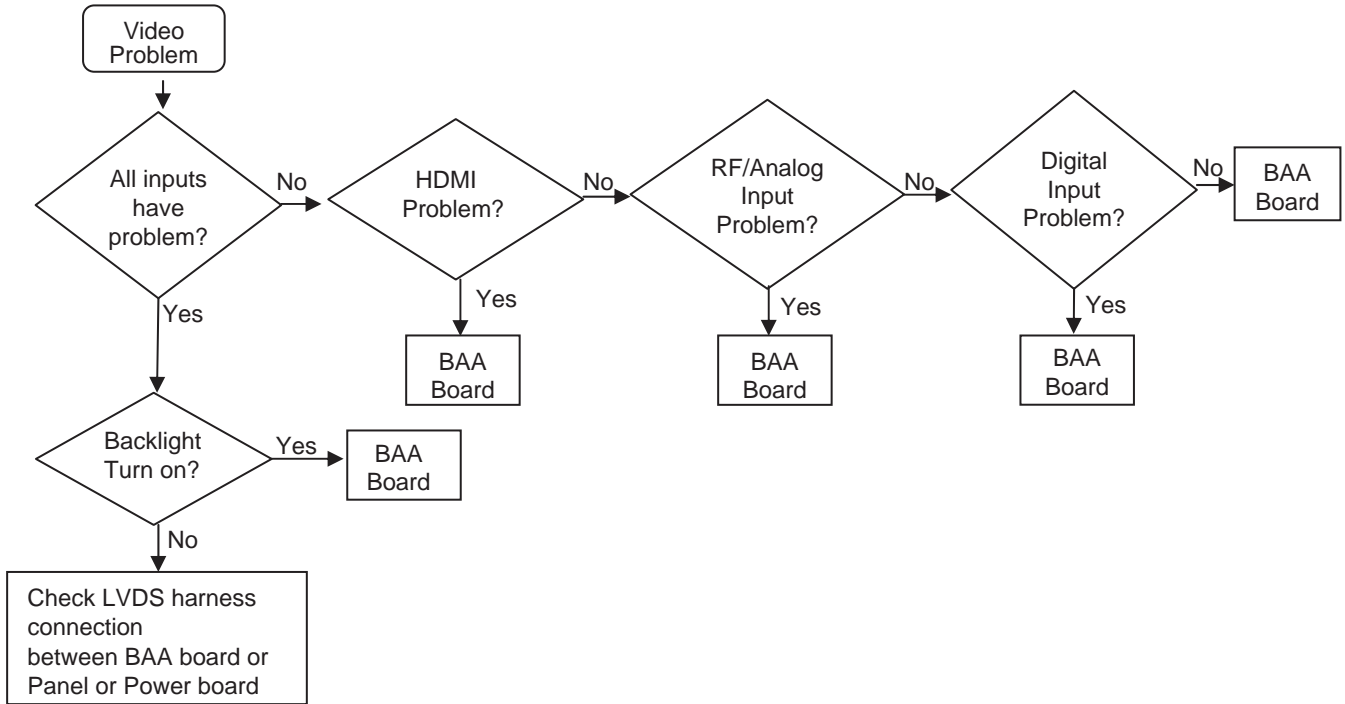
SECTION 3
TROUBLESHOOTING

3.1 FLOWCHART

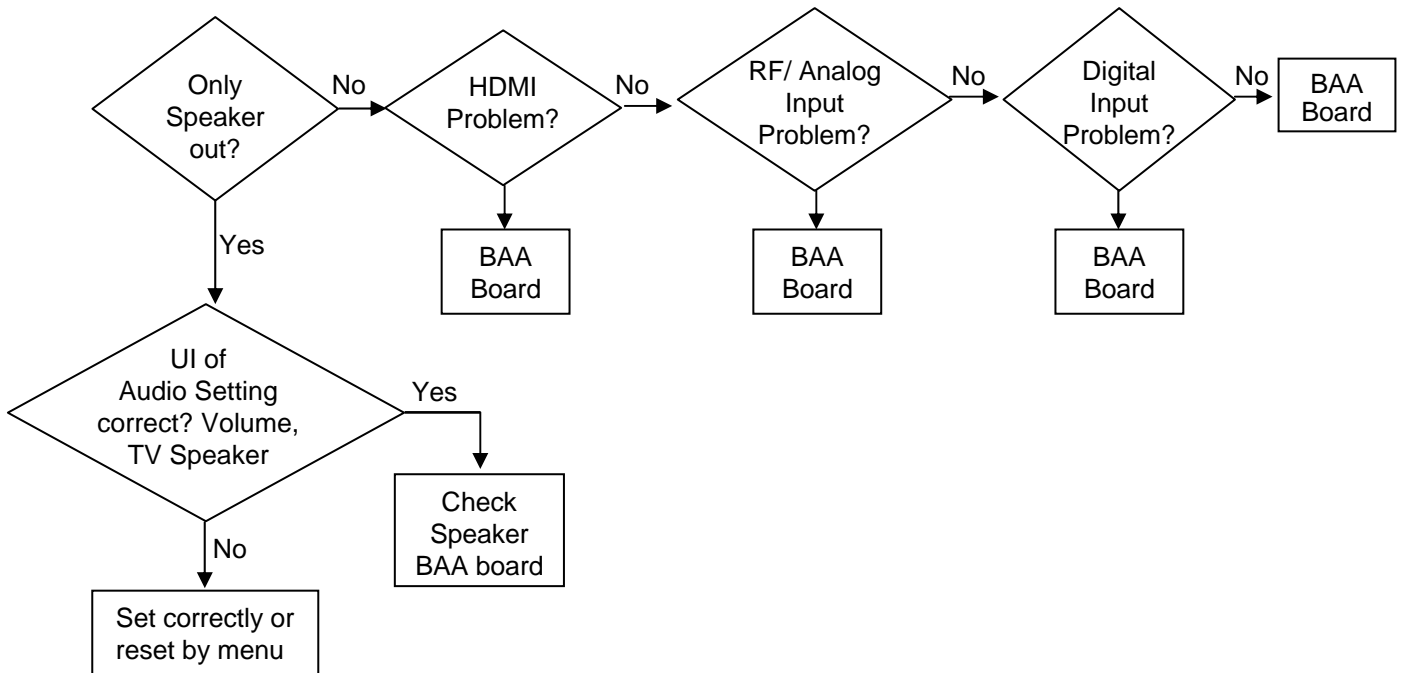
3-1-1. NO POWER



3-1-2. VIDEO PROBLEM



3-1-3. AUDIO PROBLEM



SECTION 4 SERVICE ADJUSTMENT

4-1. Accessing Self Diagnostic Menu

- While TV on standby mode, press the following sequence on the Remote commander. (RM-GA019)
<Display>--> <5>--> <Vol Down>--> <Power>

Self Check			
002	Main Power	001	1 indicates an error was detected
003	Dc_Alert	000	0 indicates no error was detected
003	Aud_Prot	000	
003	MotionFlow	000	
004	Balancer_Error	000	
005	T-CON Error	000	
005	Panel ID NVM Error	000	
006	Backlight Error	000	
007	Temp_Error	000	
00009		00027	00009
Diagnostic Menu Sample			
Total Hours of Operation (max 65535)	Boot Count (max 65535)	Total Panel Hours (max 65535)	

- To Reset Error Count & Error History
Press < 8 > --> < 0 > key
- To Reset Panel Operation Time
Press < 7 > --> < 0 > key
- To exit, turn the power off using Remote.

4-2. Accessing Service Mode

- While TV on standby mode, press the following sequence on the Remote commander.
<Display>--> <5>--> <Vol Up>--> <Power>

Tuning System	<[Auto]>
No_Signal_Mute	<[Off]>
Serial Number Edit	
Self Diagnosis History >>	
LVDS Spectrum (%)	<[10]>
Low of HPD	<[5]>
VCR1	<[off]>
GAISOU	<[0]>

Service Mode Menu Sample

- Use the ↓ or ↑ button to select the item you want to refer and press ⊕ for details.
Example Status information

Service Mode	
Status Information >>	
Test Reset	<[Off]>
Tuning System	<[Auto]>
No_Signal_Mute	<[Off]>
Serial Number Edit	
Self Diagnosis History >>	
LVDS Spectrum (%)	<[10]>
Low of HPD	<[5]>

Main Micro	
SW Version	TM0.341.012
NVM Version	TD0.341
Boot Version	TB0.341
Panel Version	MT0000.000.0030.LT
Flash PQ Version	
AQ Version	AQ0.003

4-3. GAISOU Adjustment

- When new board is replaced, please confirm the color ornamental of the TV set.
- While TV on standby mode, press the following sequence on the Remote commander.
<Display> → <5> → <Vol Up> → <Power>

Tuning System	<[Auto]>
No_Signal_Mute	<[Off]>
Serial Number Edit	
Self Diagnosis History >>	
LVDS Spectrum (%)	<[10]>
Low of HPD	<[5]>
VCR1	<[off]>
GAISOU	<[0]>

Service Mode Menu Sample

- Use the ↓ or ↑ button to select the GAISOU.

Service Mode	
Status Information >>	
Test Reset	<[Off]>
Tuning System	<[Auto]>
No_Signal_Mute	<[Off]>
Serial Number Edit	
Self Diagnosis History >>	
LVDS Spectrum (%)	<[10]>
Low of HPD	<[5]>
VCR1	<[off]>
GAISOU	<[0]>

Service Mode Menu Sample

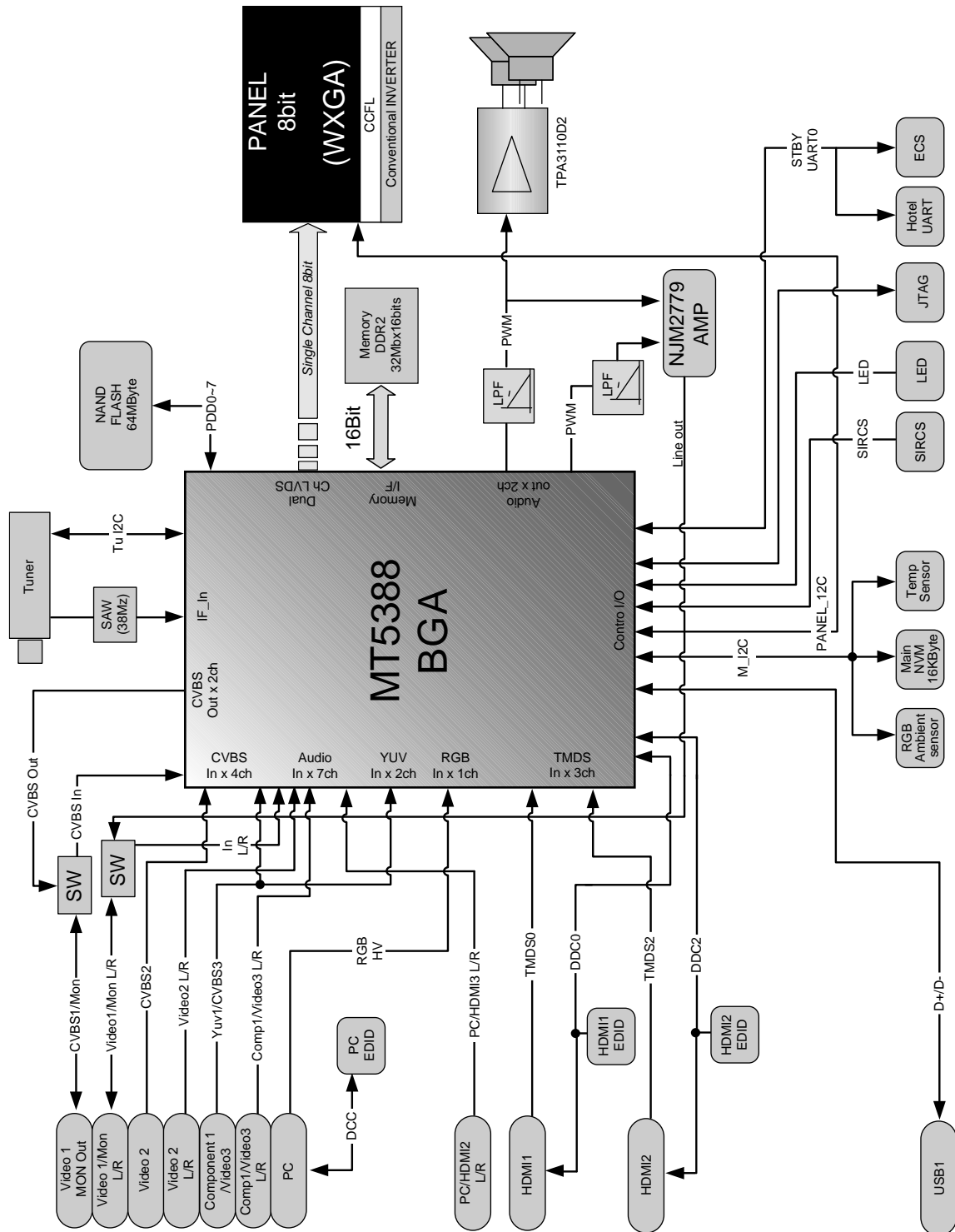
- Use the ← or → button to change the GAISOU data.
- The color variation table of each TV set as below:-

00	Default
01	Glossy Gun Metallic (back print)
02	Glossy Silver (back print)
03	Red
04	Blue
05	Matt Gun Metallic
06	Flat Gun Metallic Hairline
07	Silver
08	Black

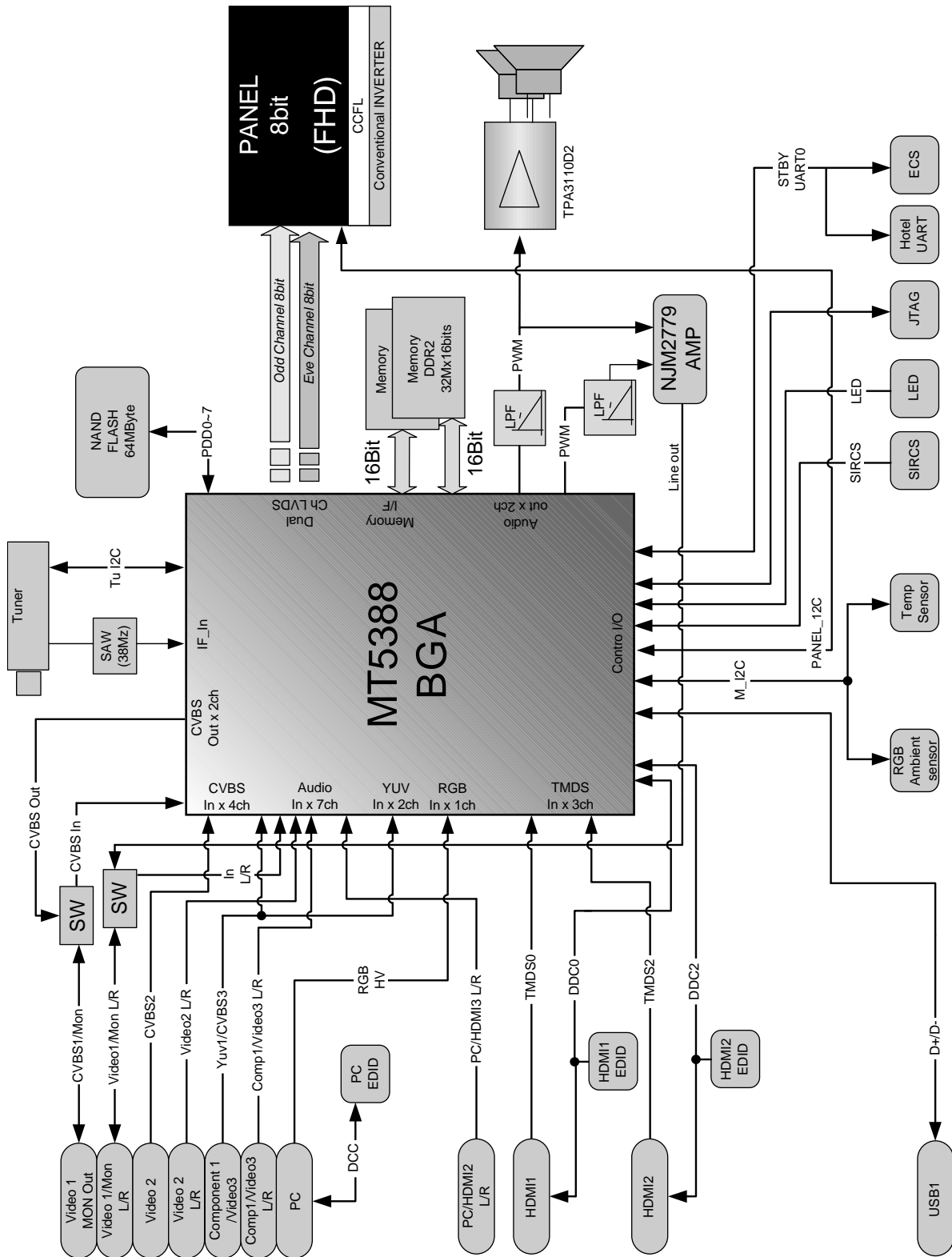
- For example if color is Red than should select 03 in the service mode of the TV set.

SECTION 5 DIAGRAMS

5-1. BLOCK DIAGRAM 5-1-1. KLV-22, 26, 32 BX300



5-1-2. KLV-40BX400



CAUTION :

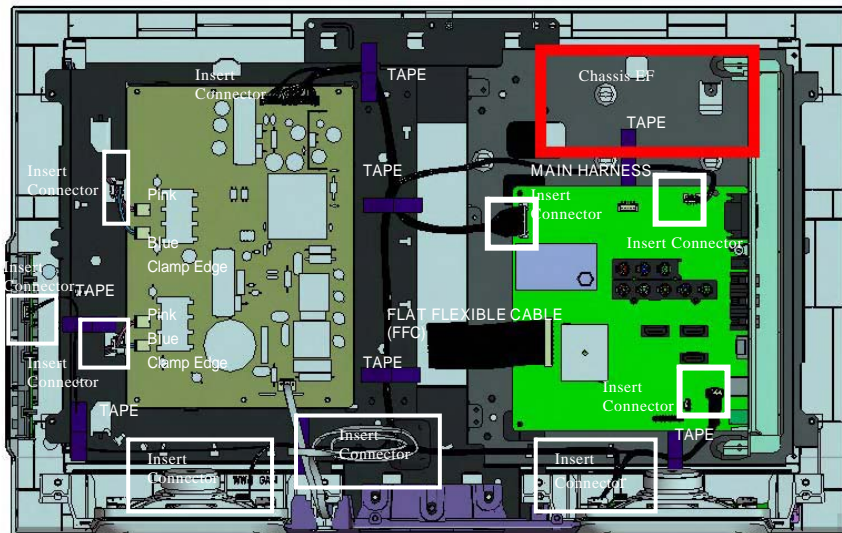
1. Do not overpull the wires during dressing
--> avoid disconnection of wires.
2. Make sure wires are kept away from sharp edges, heatsinks & other high-temperature parts.

5-2. WIRE DRESSING AND CONNECTOR DIAGRAM

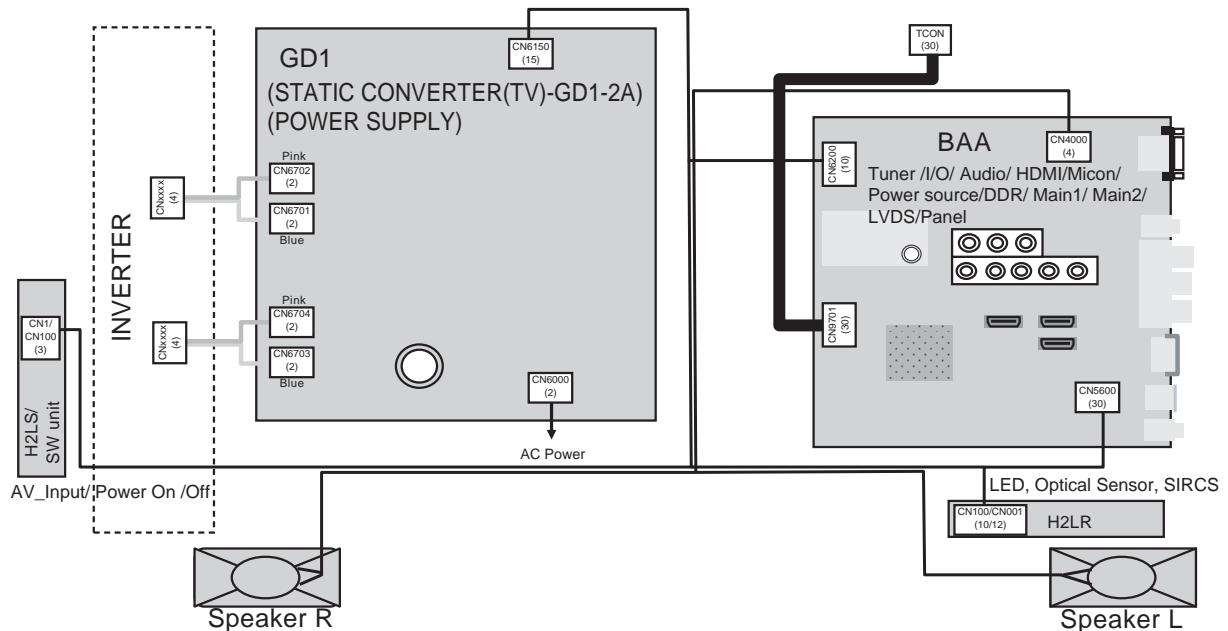
5-2-1. KLV-22BX300

 Tape (60mm)

A. WIRE DRESSING

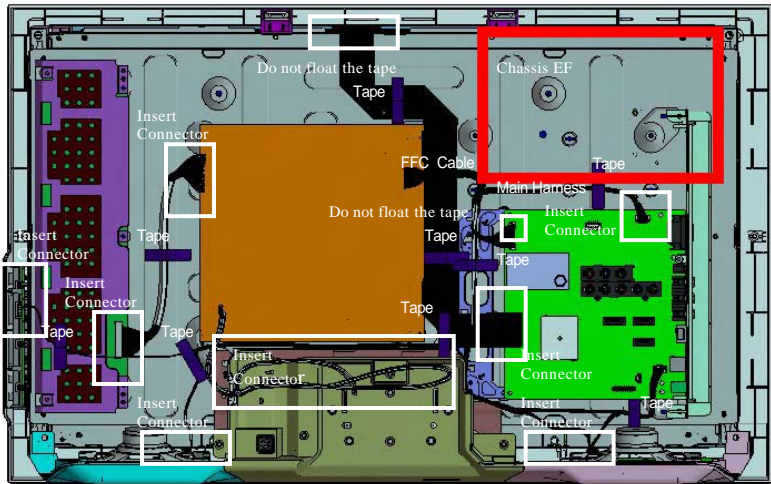


B. CONNECTOR DIAGRAM

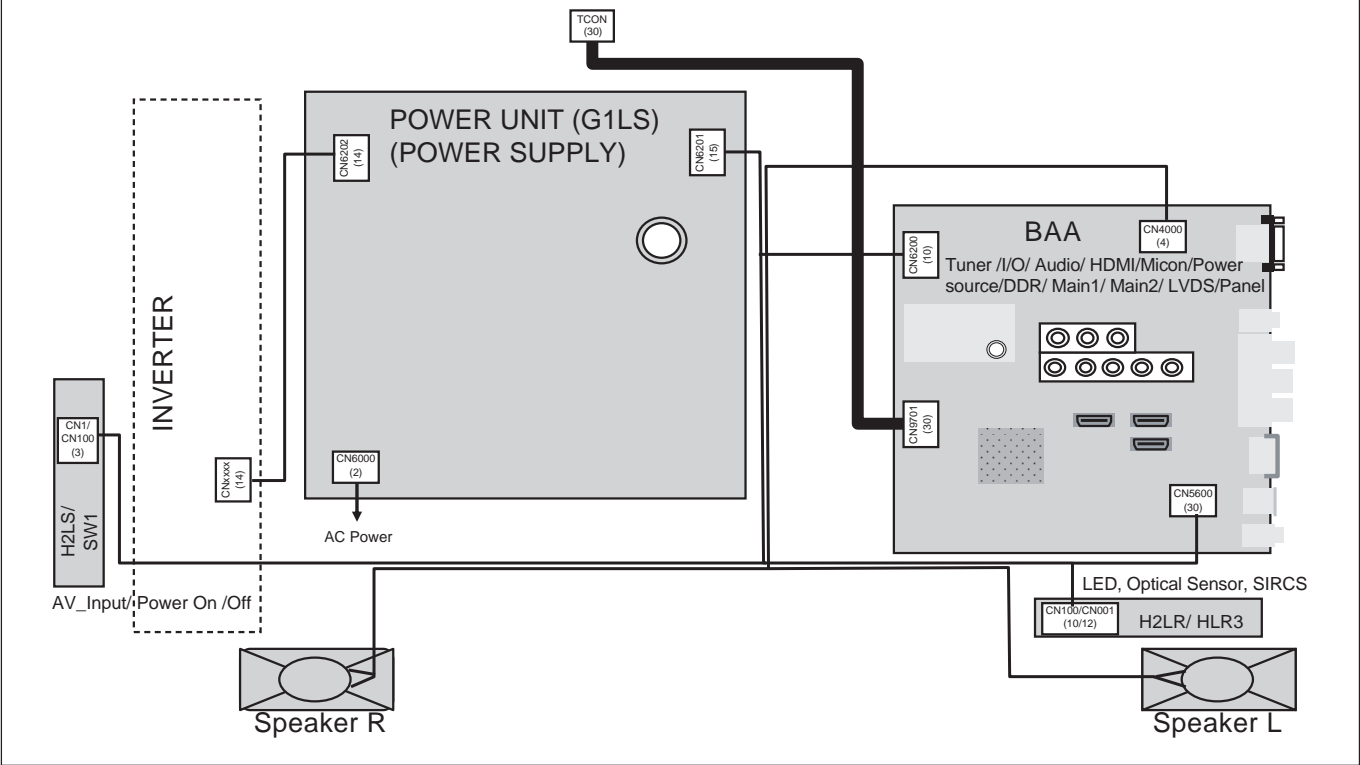


5-2-2. KLV-26BX300

A. WIRE DRESSING

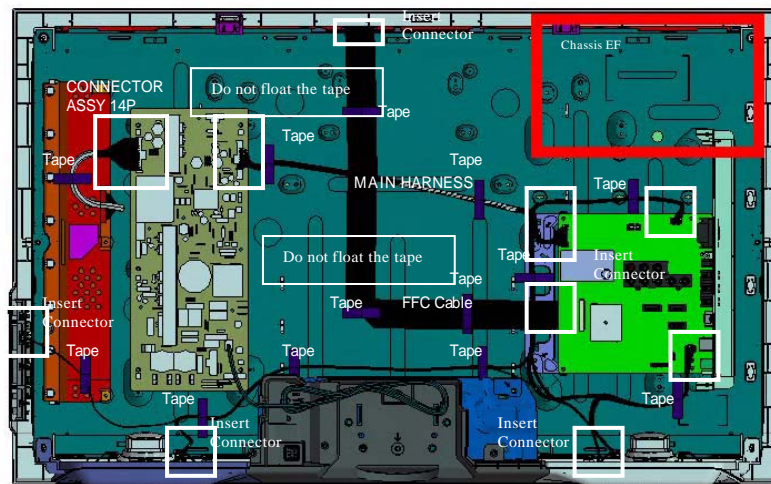


B. CONNECTOR DIAGRAM

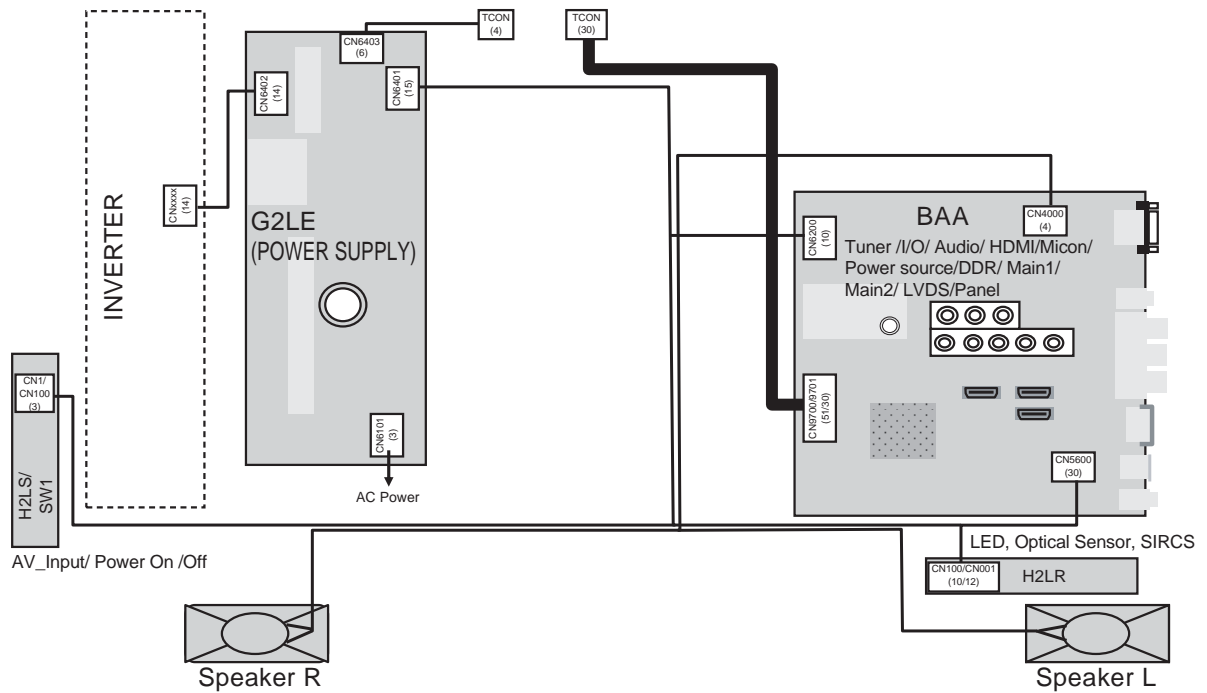


5-2-3. KLV-32BX300

A. WIRE DRESSING

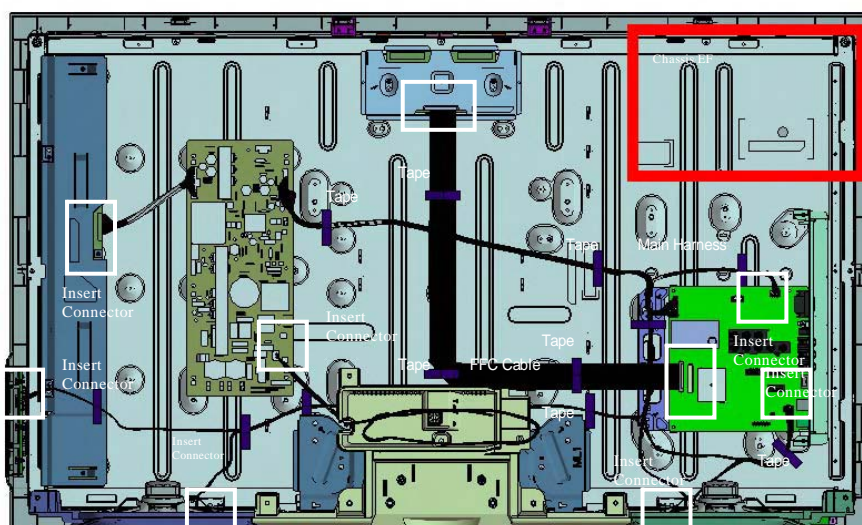


B. CONNECTOR DIAGRAM

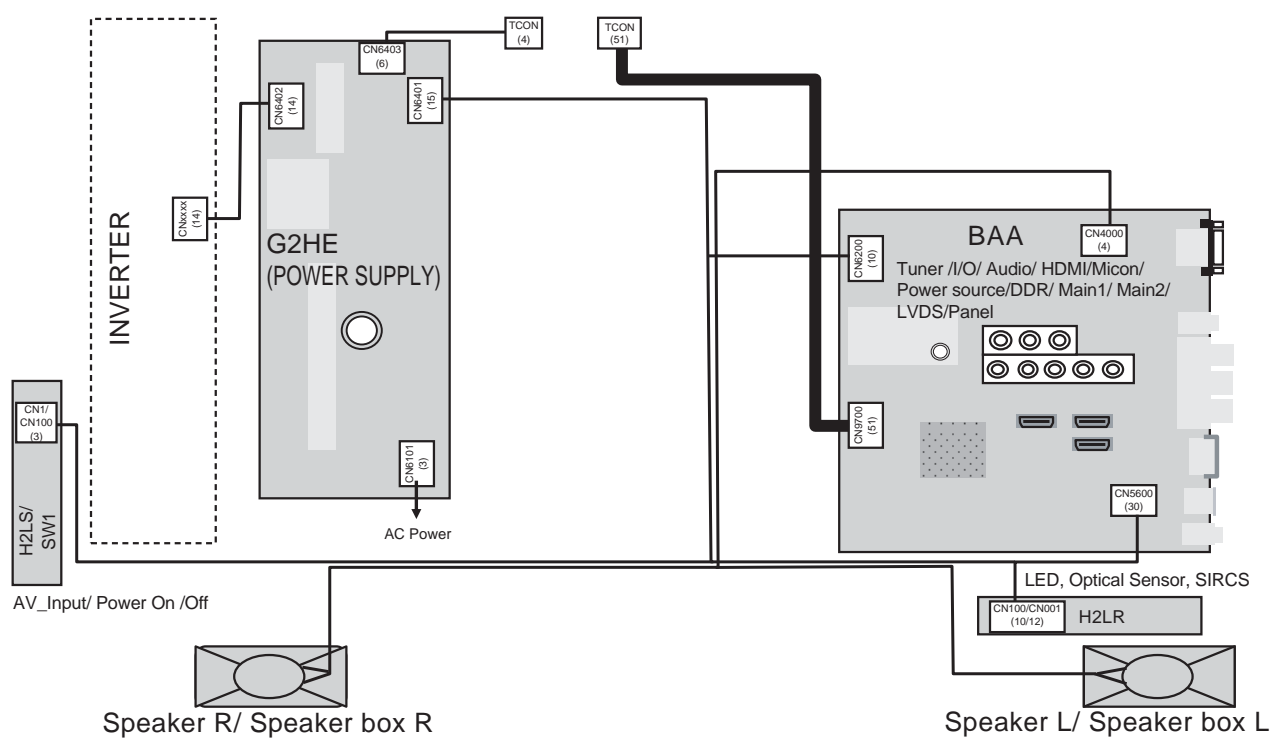


5-2-4. KLV-40BX300

A. WIRE DRESSING

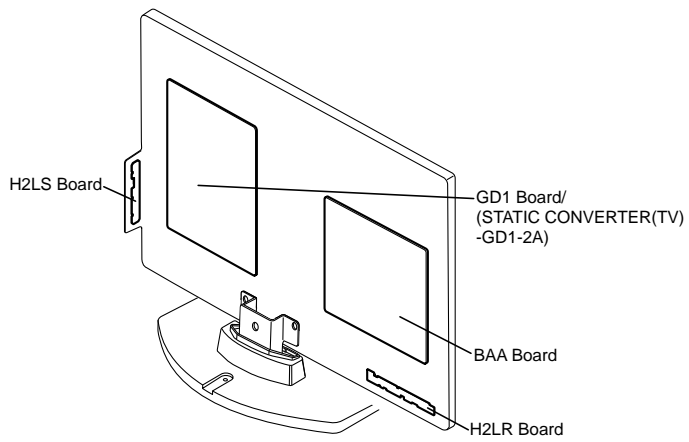


B. CONNECTOR DIAGRAM

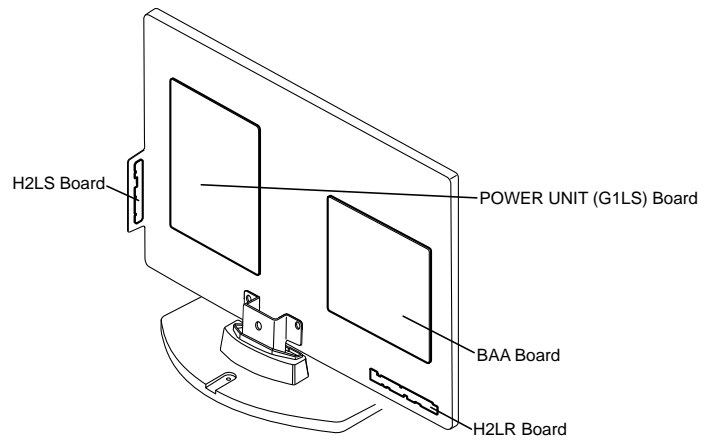


5-3. CIRCUIT BOARD LOCATION

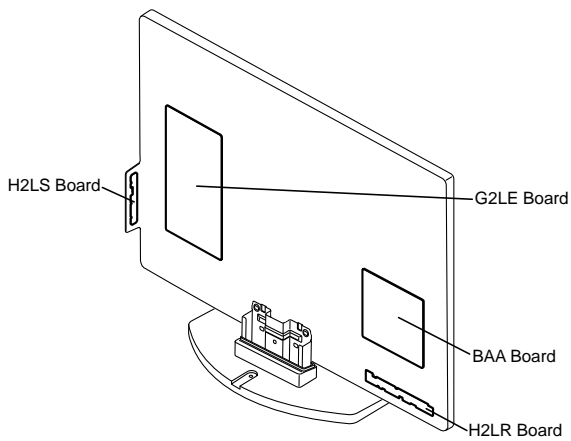
5-3-1 KLV-22BX300



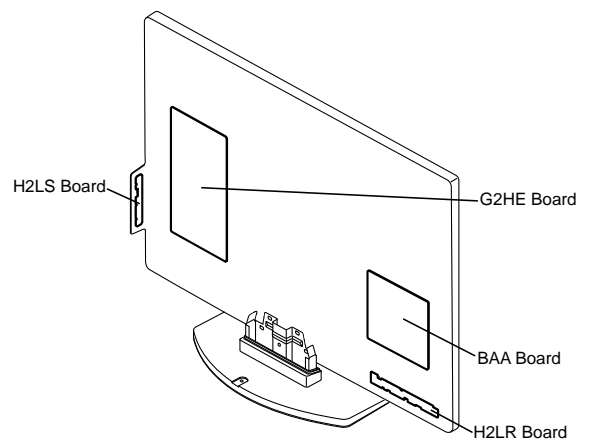
5-3-2 KLV-26BX300



5-3-3 KLV-32BX400



5-3-4 KLV-40BX400



SECTION 6
DISASSEMBLY, EXPLODED VIEW AND OTHER PARTS

Caution:

- ▲ and shaded parts are critical for safety. Replace only with part number specified.
- ⚠ parts contain confidential information. Strictly follow the instruction whenever the components are repaired and/or replaced.
- Place the TV set facing downwards on a stable, level surface before disassembly and assembly of parts.

Note:

- (*) parts are not stocked since they are seldom required for routine service. Some delays should be anticipated when ordering these components.
- Illustrations provided in this section might have slight difference from the actual sets.
- The reference number besides the part description in the illustration indicates the disassembly sequence.
- Lines that indicate parts are shown in blue in the illustration.
- Only part number and description for service parts are shown in the parts list.
- Unplug connectors before disassembly.
- Refer Electrical Parts List section for connector part number.

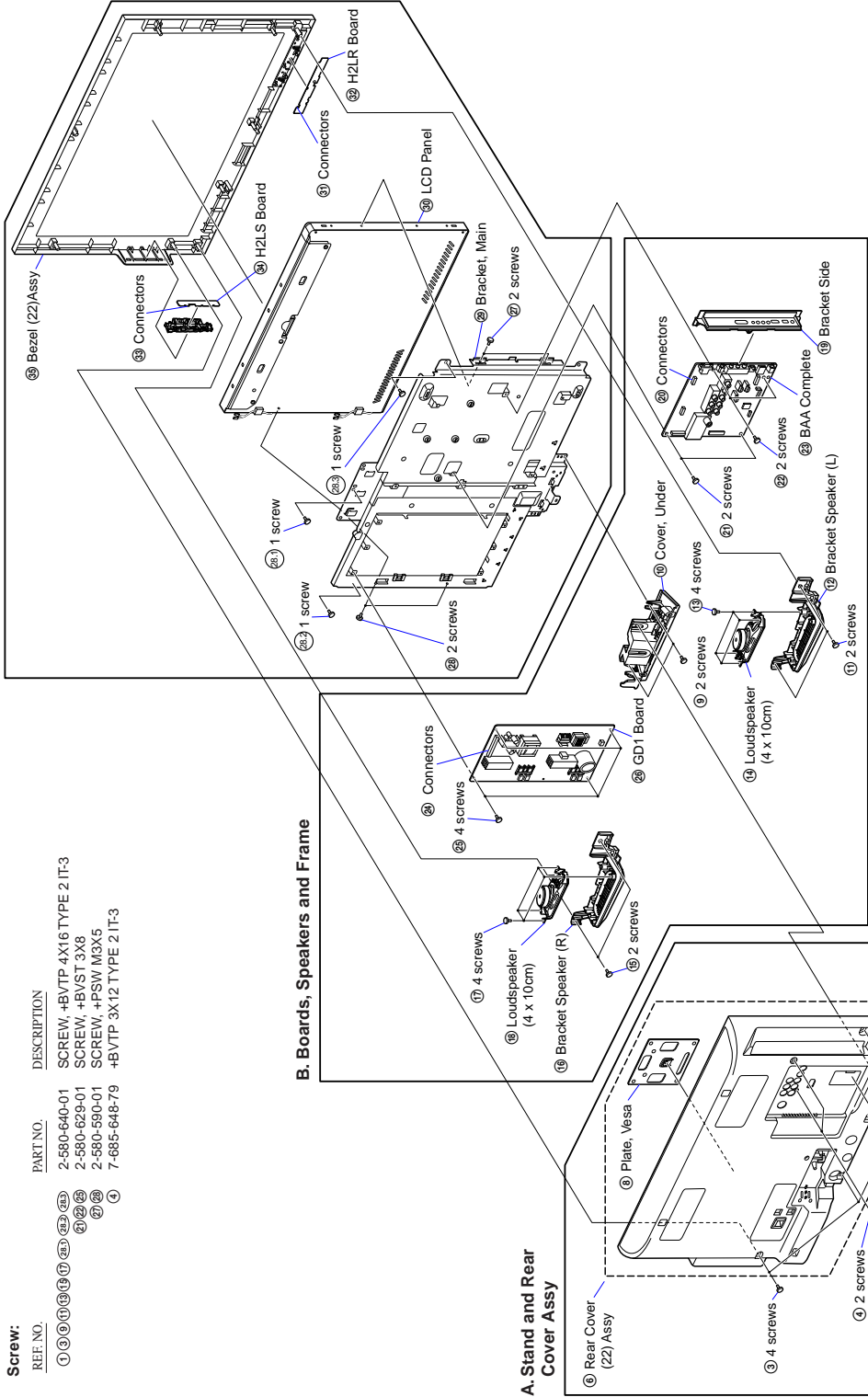
6-1. DISASSEMBLY & EXPLODED VIEW

6-1-1. KLV-22BX300

Screw:

REF. NO.	PART NO.	DESCRIPTION
① ③ ⑤ ⑩ ⑬ ⑭ ⑰ ⑲ ⑳ ㉑ ㉒ ㉓ ㉔ ㉕ ㉖ ㉗ ㉘ ㉙ ㉚ ㉛ ㉜ ㉝ ㉞ ㉟ ㊱ ㊲ ㊳ ㊴ ㊵ ㊶ ㊷ ㊸ ㊹ ㊺ ㊻ ㊼ ㊽ ㊾ ㊿	2-580-640-01 2-580-629-01 2-580-590-01 7-685-648-79	SCREW, +BVTP 4X16 TYPE 2 IT-3 SCREW, +BVST 3X8 SCREW, +PSW M3X5 +BVTP 3X12 TYPE 2 IT-3

C. Boards, Panel and Bezel



Parts List:

REF. NO.	PART NO.	DESCRIPTION	REMARK
②	X-2514-989-1	BASE (S3B) ASSY	
③	4-158-356-01	NECK (S5)	
④	4-158-399-01	COVER, NECK (S3B)	
⑤	X-2515-517-1	REAR COVER(2)/ASSY	
⑥	4-115-101-41	COVER, ECS	
⑦	4-127-133-01	PLATE, VESA	
⑧	4-157-865-01	COVER, UNDER(2)	
⑨	4-157-866-01	BRACKET, SPEAKER (22L/R)	
⑩	1-858-339-11	LOUDSPEAKER (4X10CM)	
⑪	4-156-944-51	BRACKET, SIDE JACK	
⑫	A-1782-842-A	BAA COMPI. BX WX 32.26(SERVICE)	Ver 2.0
⑬	1-474-204-31	STATIC CONVERTER(TV)-GDI-2A	
⑭	1-811-070-11	LCD PANEL (A216V3)	
⑮	A-1744-833-A	H2LR MOUNT	
⑯	A-1744-834-A	H2LS MOUNT (AZ1A)	
⑰	X-2514-589-1	BEZEL (22) ASSY	

• The reference number beside the part description in the illustration indicates the disassembly sequence.

6-1-2. KLV-26BX300

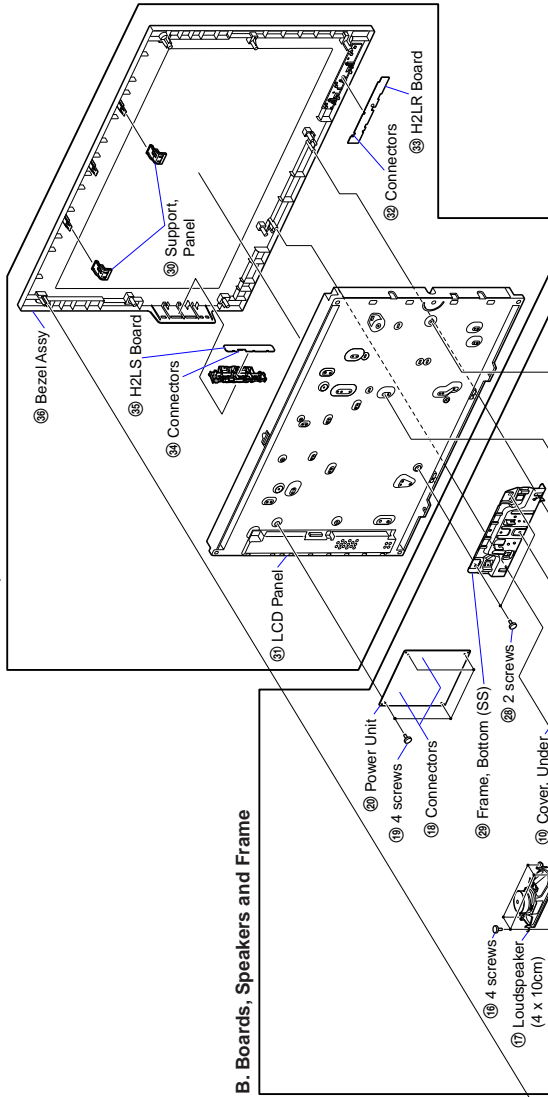
Screw:

REF. NO.	PART NO.	DESCRIPTION
③④⑤	2-580-640-01	SCREW, +BVTP 4X16 TYPE 2 IT-3
①②③④	2-580-592-01	SCREW, +PSW M3X8
④	2-580-595-01	SCREW, +PSW M3X12
①③④⑤	7-685-648-79	+BVTP 3X12 TYPE 2 IT-3
⑥⑦	4-159-298-01	SCREW, +PSW M4X10

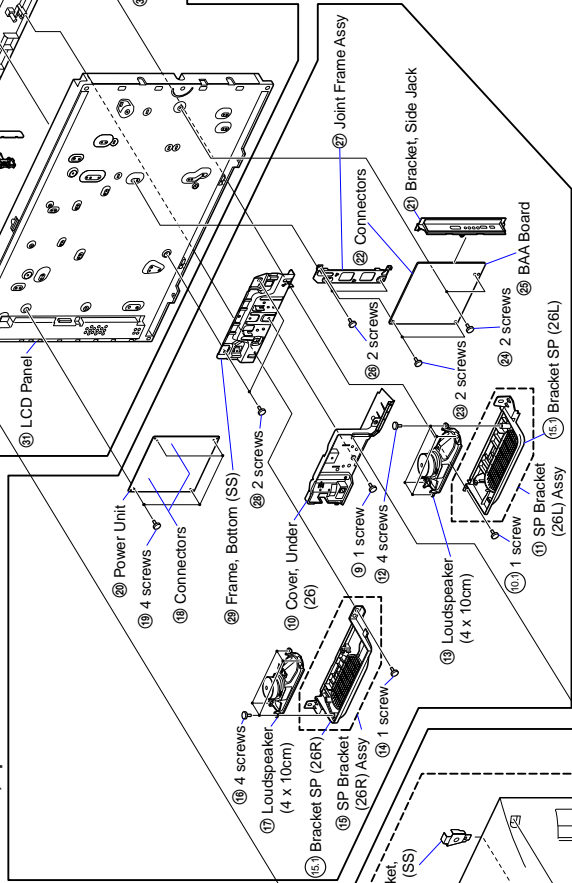
Parts List:

REF. NO.	PART NO.	DESCRIPTION	REMARK
②	X-2546-140-1	BASE (M3B) ASSY	
③④	4-171-685-01	NECK (M3B)	
③④	4-171-689-01	COVER, NECK (M3B)	
⑥	X-2515-518-1	REAR COVER (26) ASSY	
⑦	4-115-101-41	COVER, ECS	
⑧	4-157-975-01	COVER, UNDER (26)	
⑩	X-2547-448-1	SP BRACKET (26L) ASSY	
⑪	1-858-341-11	LOUDSPEAKER (4X10CM)	
⑫	X-2547-449-1	SP BRACKET (26R) ASSY	
⑬	1-474-094-11	POWER UNIT	
⑭	4-156-044-51	BRACKET, SIDE JACK	
⑮	A-1782-842-A	BAA COMPL BX_WX_32_26(SERVICE)	Ver 2.0
⑯	△ 1-811-071-11	LCD PANEL (A26W0)	
⑰	A-1744-833-A	H2LR MOUNT	
⑱	A-1744-834-A	H2LS MOUNT (AZIA)	
⑳	X-2514-590-1	BEZEL (26) ASSY	

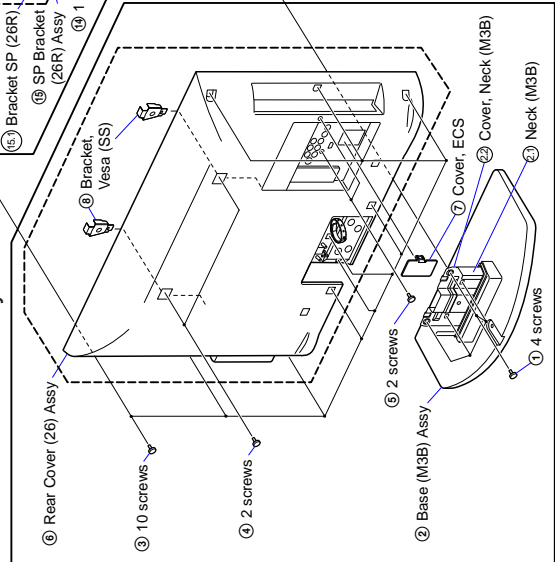
C. Boards, Panel and Bezel



B. Boards, Speakers and Frame



A. Stand and Rear Cover Assy



• The reference number beside the part description in the illustration indicates the disassembly sequence.

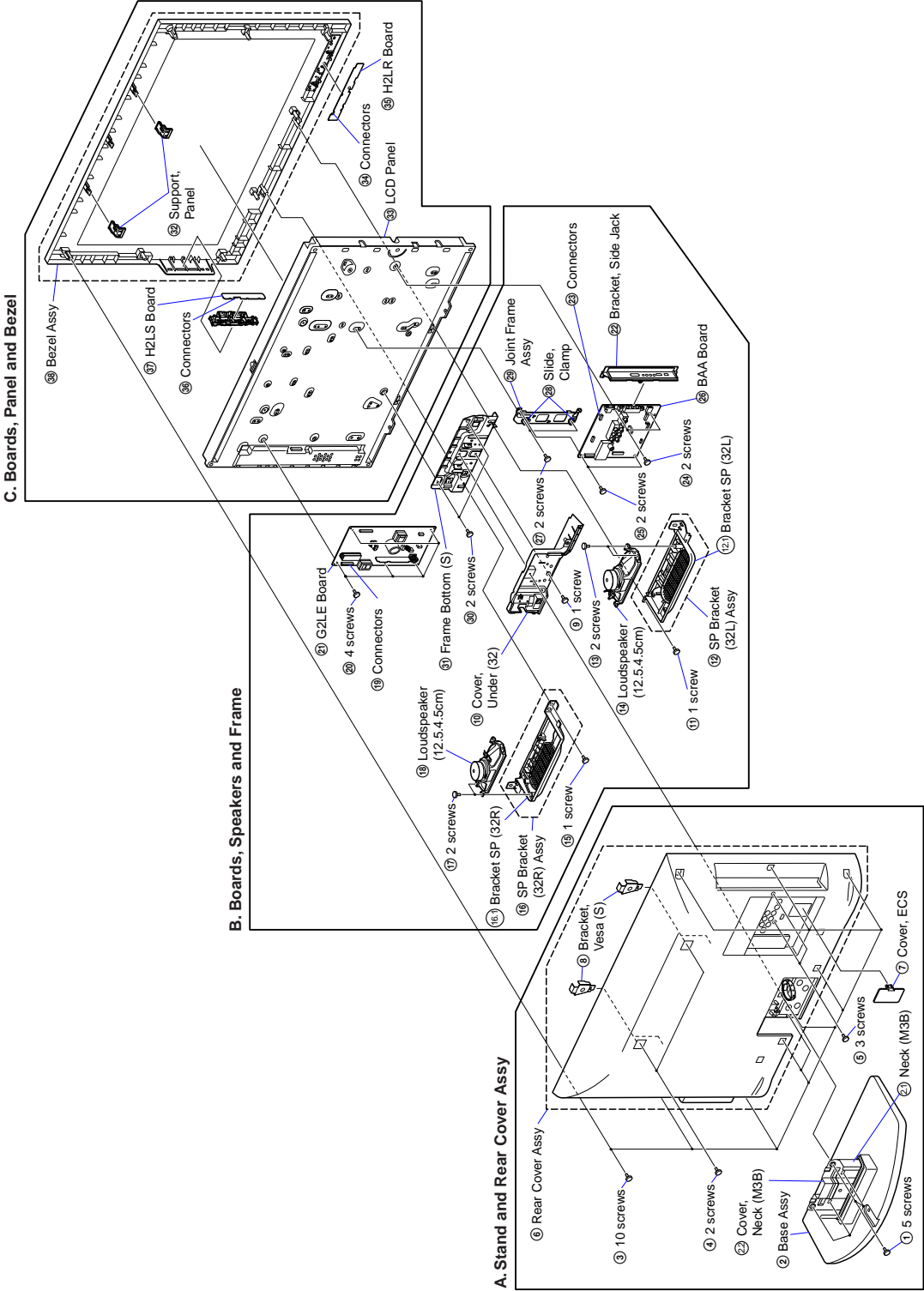
6-1-3. KLV-32BX300

Screw:

REF. NO.	PART NO.	DESCRIPTION
③①⑤	2-580-640-01	SCREW, +BVTP 4X16 TYPE 2 IT-3
②③④⑥	2-580-592-01	SCREW, +PSW M3X8
④	2-580-595-01	SCREW, +PSW M3X12
①⑤③⑦	7-685-648-79	+BVTP 3X12 TYPE 2 IT-3
⑥⑥	4-159-298-01	SCREW +PSW M4X10

Parts List:

REF. NO.	PART NO.	DESCRIPTION	REMARK
①	X-2546-140-1	BASE (M3B) ASSY	
②①	4-171-685-01	NECK (M3B)	
②②	4-171-689-01	COVER, NECK (M3B)	
⑥	X-2515-519-1	REAR COVER (32) ASSY	
⑦	4-115-101-41	COVER, ECS	
⑧	4-167-326-01	BRACKET, VESA (S)	
⑨	4-157-976-01	COVER, UNDER (32)	
⑩	4-169-309-01	COVER, UNDER (32)	
⑪	X-2547-450-1	SP BRACKET (32L) ASSY	
⑫⑬	1-858-364-11	LOUDSPEAKER (12.5,4.5CM)	
⑭	X-2547-451-1	SP BRACKET (32R) ASSY	
⑮	A-1752-778-A	G2LE UNIT	
⑯	4-156-944-51	BRACKET, SIDE JACK	
⑰	A-1782-842-A	BAA COMPL BX, WX, 32_26(SERVICE)	Ver 2.0
⑱	△ 1-811-068-11	LCD PANEL (S532TSC)	
⑲	△ 1-811-068-21	LCD PANEL (S532TSC)	
⑳	A-1744-833-A	H2LR MOUNT	
㉑	A-1744-834-A	H2LS MOUNT (AZ1A)	
㉒	X-2514-591-1	BEZEL (32) ASSY	



• The reference number beside the part description in the illustration indicates the disassembly sequence.

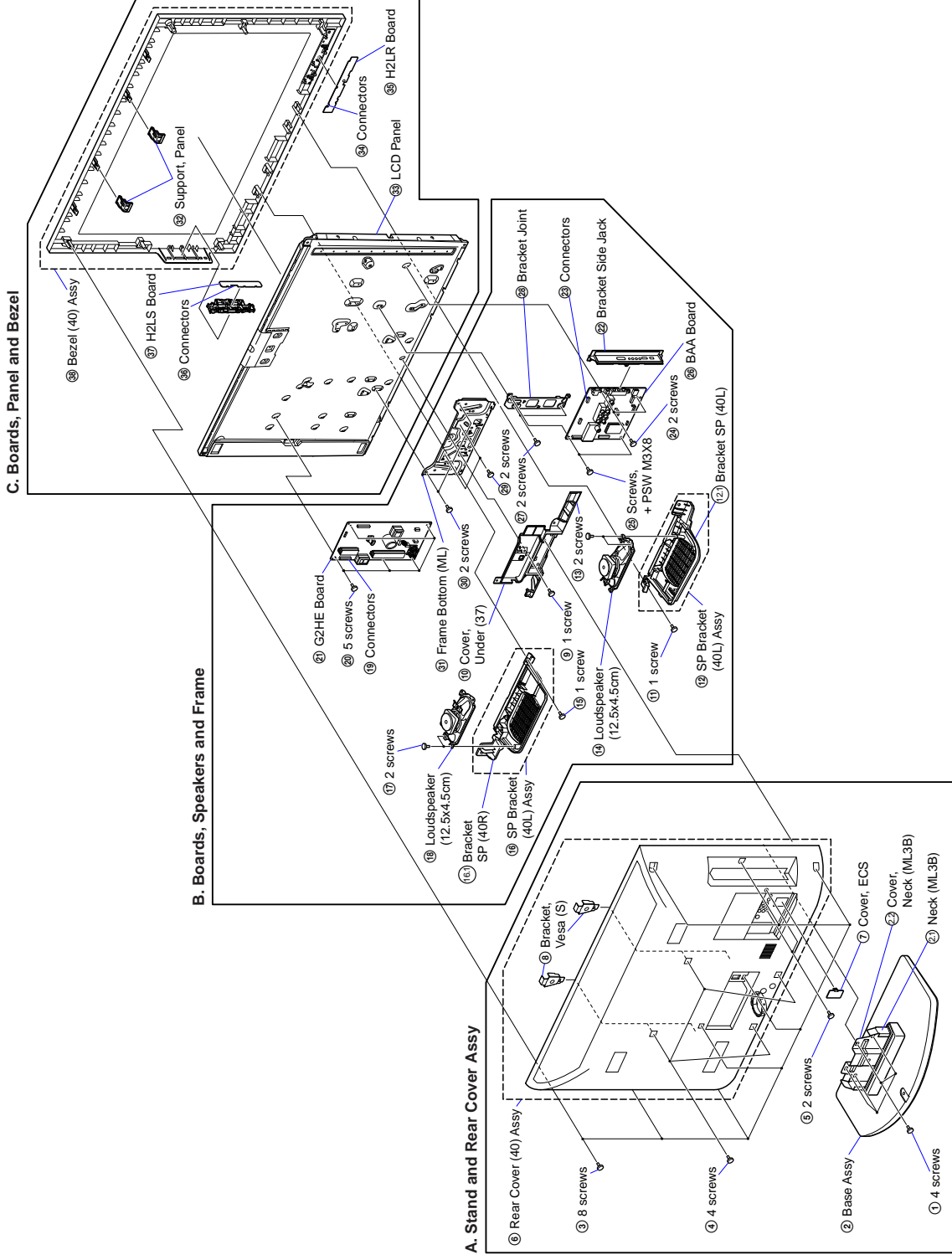
6-1-4. KLV-40BX400

Screw:

REF. NO.	PART NO.	DESCRIPTION
③①③②	2-580-640-01	SCREW, +BVTP 4X16 TYPE 2 IT-3
①⑤③⑦	7-685-648-79	+BVTP 3X12 TYPE 2 IT-3
④②②	4-159-298-01	SCREW +PSW M4X10
②③③⑦	2-580-592-01	SCREW, +PSW M3X8

Parts List:

REF. NO.	PART NO.	DESCRIPTION	REMARK
②	X-2546-141-1	BASE (ML3B) ASSY	
③	X-2515-520-1	REAR COVER (40) ASSY	
⑦	4-115-101-41	COVER, ECS	
⑧	4-167-326-01	BRACKET, VESA (S)	
⑩	4-157-977-01	COVER, UNDER (37)	
⑪	4-169-308-01	COVER, UNDER (37)	
⑫	X-2547-452-1	SP BRACKET (40L) ASSY	
⑬	1-558-364-11	LOUDSPEAKER (12.5X4.5CM)	
⑭	X-2547-453-1	SP BRACKET (40R) ASSY	
⑮	A-1752-780-A	G2HE UNIT	
⑯	4-156-944-51	BRACKET, SIDE JACK	
⑰	A-1784-340-A	BAA COMPL BX_FHD_40(SERVICE)	Ver 2.0
⑱	1-811-060-11	LCD PANEL (S40TSP)	
⑲	A-1744-833-A	HELX MOUNT	
⑳	A-1744-834-A	HZLS MOUNT (AZIA)	
㉑	X-2514-592-1	BEZEL (40) ASSY	



• The reference number beside the part description in the illustration indicates the disassembly sequence.

6-2. OTHER PARTS

<u>REF NO.</u>	<u>PART NO.</u>	<u>DESCRIPTION</u>	<u>REMARK</u>	<u>REF NO.</u>	<u>PART NO.</u>	<u>DESCRIPTION</u>	<u>REMARK</u>
6-2-1. KLV-22BX300							
		CONNECTORS					

	* 1-910-800-01	MAIN HARNESS					
		CN6200(BAA)-CN6150(GD1)-CN5600(BAA)-					
		CN100(H2LR)-CN1(H2LS)CN4000(BAA)-SP(1)					
	* 1-837-559-11	FLAT FLEXIBLE CABLE (FFC)					
		CN9701(BAA)-TCON(1)					

6-2-2. KLV-26BX300							
		CONNECTORS					

	* 1-837-773-11	FLAT FLEXIBLE CABLE (FFC)					
		(CN9701(BAA)-TCON(1))					
	* 1-910-059-59	CONNECTOR ASSY 14P					
		(CN6202(G1LS)-INV(1))					
	* 1-910-800-02	MAIN HARNESS					
		(CN6200(BAA)-CN6201(G1LS)-					
		CN5600(BAA)-CN100(H2LR)-CN1(H2LS)					
		CN4000(BAA)-SP(1))					

6-2-3. KLV-32BX300							
		CONNECTORS					

	* 1-910-059-62	CONNECTOR ASSY 14P					
		(CN6402(G2LE)-INV(1))					
	* 1-910-059-61	MAIN HARNESS					
		CN6200(BAA)-CN6401(G2LE)-CN5600(BAA)-					
		CN100(H2LR)-CN1(H2LS)CN4000(BAA)-SP(1)					
	* 1-837-561-11	FLAT FLEXIBLE CABLE (FFC)					
		(CN9701(BAA)-TCON(1))					

6-2-4. KLV-40BX400							
		CONNECTORS					

	* 1-910-059-67	CONNECTOR ASSY 14P					
	* 1-837-731-11	FFC WITH CONNECTOR					
		(CN9700(BAA)-TCON(1))					
	* 1-910-800-08	MAIN HARNESS					
		(CN6200(BAA)-CN6401(G2HE)-CN5600(BAA)-					
		CN100(H2LR)-CN1(H2LS) CN4000(BAA)-SP(1))					

6-2-5. Common Parts							
		MISCELLANEOUS					

	X-2342-530-2	BAG ASSY, FALL LOCK BELT					
	2-580-604-01	SCREW, +PSW M4X20					
	2-580-663-02	SCREW, WOOD 3.8X20					
	2-580-608-01	SCREW, +PSW M5X16					

		REMOTE COMMANDER					

	1-487-705-11	REMOTE COMMANDER (RM-GA019)					

		INSTRUCTION MANUAL					

	4-168-830-51	MANUAL, INSTRUCTION(RU)					

