
Service Manual

Washing machine

Toploader

AWH 651 - ESLABON

Model	AWH 651 - ESLABON	
Version	8537 651 41360	Page
	Technical data	2
	Spare part list	3 - 4
	Exploded view	5 - 6
	Wiring diagram	7
	Circuit diagram	8
	Program diagram	9

Technical data

Dimensions

Height	88.0	cm
Width	40.0	cm
Depth	60.0	cm

Weight

Net weight	~65	kg
With package	~69	kg

General specifications

Voltage	220 ± 10%	V
Frequency	50	Hz
Connected load	~ 2.2	kW
Fuse	10	A

Drum data

Drum speed

Washing	55	rpm
Spinning max.	500	rpm

Capacity

Volume	43	l
Max. load dry laundry	5	kg

Electrical building parts

Heating

Type	Tubular radiator	
Power consumption	1.85	kW
Nominal voltage	230	V

Drain pump

Power consumption	~ 40	W
Capacity	11.5	l/min.
Rotation speed	~ 3000	rpm
Height of drain hose	max. 1.00	m
	min. 0.55	m

Motor

Type	Asynchronous 2/16
------	-------------------

Capacitor

Type	16	μ F
------	----	-----

Timer

Type	EATON EC 4453
The timer chart includes	
2 basic programmes	- normal washing - delicate washing - & wool

Thermostat

A - a fixed thermostat	40	°C
B - a fixed thermostat	60	°C
C - a fixed thermostat	90	°C
D - a temperature limiter	107	°C

Pressostat (without laundry)

Low level	9 ± 1	l
High level	~ 22	l
Foam level	~ 2	l
Overflow level	~ 30	l

Rotary switch

Temperature selector	7	pos.
----------------------	---	------

Push button switch

- On / Off	2	pol.
- No spinning)	1	pol.

Spare part list

Model AWH 651 - ESLABON
Service No. 853765141360
Version 853765141360

Pos. No.	12NC Code	Description
001 0	4819 440 19493	Cabinet
002 0	4819 440 18975	Door
010 0	4819 459 48755	Frame
010 1	4819 404 78394	Water conveyor
012 4	4819 528 78045	Roller rear
013 0	4819 462 48485	Adjust.foot
022 0	4819 440 18976	Panel,side
025 0	4819 440 19651	Bracket
041 0	4819 417 19334	Hinge
053 0	4819 440 19142	Plinth
061 0	4819 466 88818	Counter weight front
061 1	4819 466 88978	Counter weight lower
061 2	4819 401 18789	Clamping piece
080 0	4819 529 18054	Shock absorber
100 0	4819 440 19719	Door
110 0	4819 498 69902	Handle,door
121 0	4819 440 19599	Door,inner
130 0	4819 535 78144	Pin Lock
141 0	4819 440 19602	Door,inner
143 0	4819 459 48757	Frame
200 0	4819 418 18342	Tub
201 0	4819 440 19606	Cover
220 0	4819 418 18311	Drum
223 0	4819 418 49713	Drum lifter
252 0	4819 404 49227	Clamp thermostat
252 1	4819 310 38541	Gasket Klixon
271 0	4819 310 39159	Belt,driving
272 0	4819 528 88106	Pulley (drum)
272 1	4819 532 28263	Ring Cone 10 degrees
292 0	4819 532 68244	Gasket tub
301 0	4819 453 19632	Control panel
303 0	4819 498 68772	Handle
331 0	4819 412 58372	Knob,timer
332 0	4819 410 28652	Push button
337 0	4819 412 58373	Knob
343 3	4819 528 38131	Coupling piece
401 0	4819 361 58047	Motor 2/16 pol.
420 0	4819 121 18284	Capacitor 16 µ F 450 V
421 0	4819 121 18266	Interf.filter
430 0	4819 360 18203	Pump,draining synchronus
451 0	4819 259 28459	Heating element 1850 W
451 2	4819 404 49558	Clamp Heating element
490 0	4819 321 18156	Cable,mains
491 0	4819 290 68113	Connectionblock
501 0	4819 282 18678	Timer EC 4453.01D
551 4	4819 282 48256	Thermostat 40 degree
551 6	4819 282 48255	Thermostat 60 degree
551 9	4819 282 48254	Thermostat 90 degree
554 0	4819 273 28249	Selector
567 0	4819 282 48071	Thermostat 107 degree
571 0	4819 281 28265	Valve,magnet
582 0	4819 271 28925	Pressostat
620 0	4819 276 18265	Switch
621 0	4819 276 38342	Switch ON/OFF
633 0	4819 271 38287	Door lock

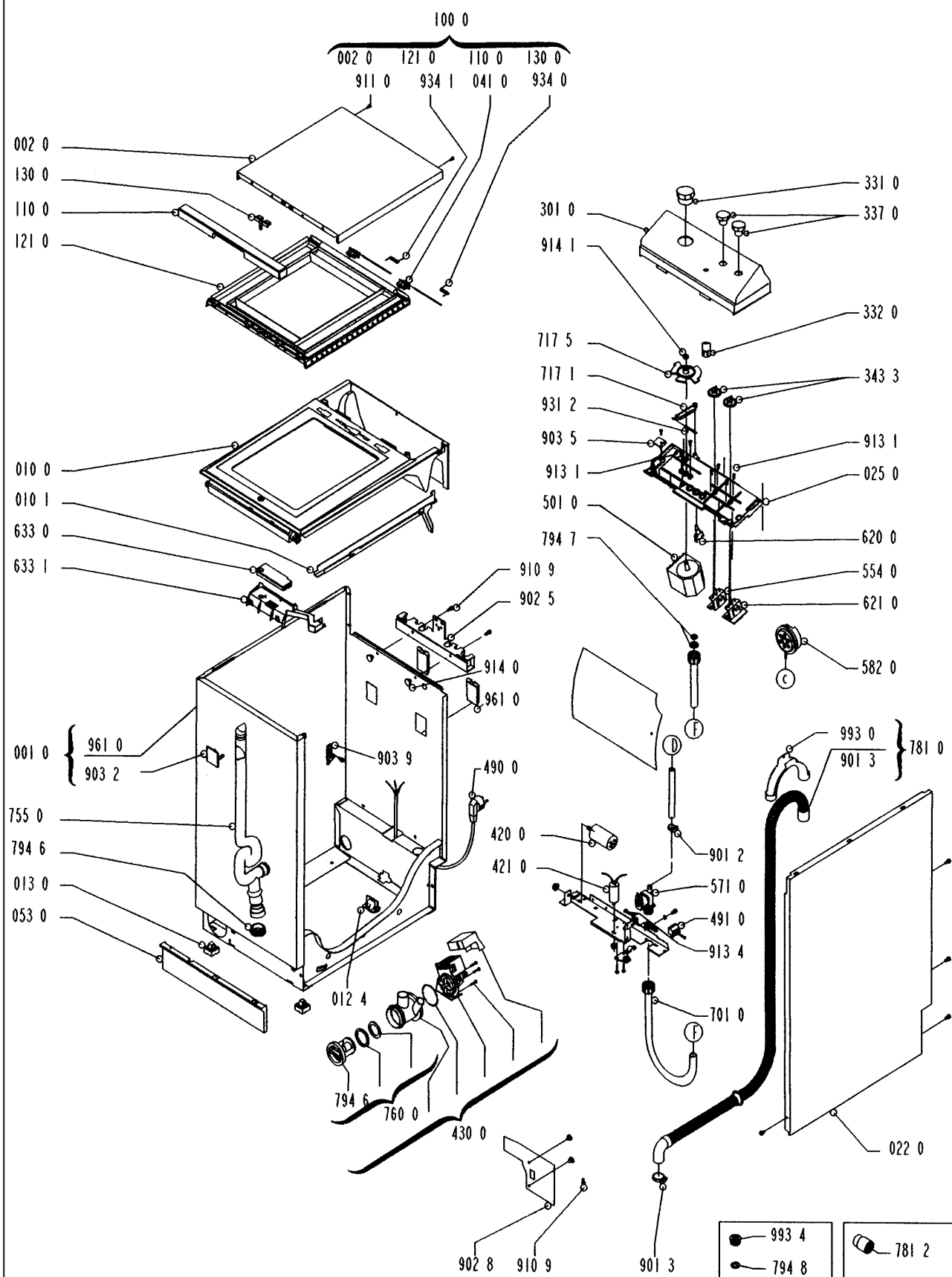
Pos. No.	12NC Code	Description
633 1	4819 404 78969	Support
701 0	4819 530 28932	Hose, inlet 1.5 m cold water
702 0	4819 530 28896	Hose
710 0	4819 459 48613	Door,outer
711 0	4819 418 78965	Door cpl.
712 1	4819 535 98514	Shaft
712 2	4819 535 98278	Spring
717 0	4819 323 28009	Bowden cable
717 1	4819 466 98972	Rocker
717 5	4819 528 38432	Cam
753 0	4819 530 28811	Chamber,air
754 0	4819 530 28504	Drainhose inner Tub/Pump
755 0	4819 530 48443	Hose over flow
760 0	4819 360 78363	Lid pump
781 0	4819 530 28953	Tube,discharg.
781 2	4819 532 68554	Sleeve hose
794 5	4819 530 58026	Gasket Air chamber
794 6	4819 530 58031	Gasket
794 7	4822 532 50428	Gasket
794 8	4819 532 58159	Gasket 1/2
901 0	4819 401 18283	Strap
901 1	4819 492 68337	Strap
901 2	4819 401 18362	Strap SNP 8
901 3	4819 401 18563	Clamp,hose
901 5	4819 535 38038	Clip bearing
902 1	4819 401 18579	Bracket
902 5	4819 401 18572	Holder hose
902 8	4819 404 78396	Tube,stabilizer over flow
903 2	4819 404 49431	Support overflow
903 3	4819 492 68338	Clip tub
903 5	4819 401 18585	Fastener sleeve
903 7	4819 492 68381	Clip
903 9	4819 404 49688	Support Top
910 0	4819 502 38231	Screw
910 1	4819 502 18417	Screw
910 5	4819 502 38265	Screw VAB 4,5x20
910 9	4819 502 38286	Screw PLASGOB ST 45
911 0	4819 502 38235	Screw TC N 6x1/2
911 2	4819 502 38232	Screw TF 4x20
911 4	4819 502 38289	Screw
911 5	4819 502 18202	Screw CHC 6x25
912 0	4819 500 18108	Screw TH 8x60
912 7	4819 502 18209	Screw JAPY 8x160
912 8	4819 502 18208	Screw JAPY 8x110
913 1	4819 502 18206	Screw TF 4x12
913 4	4819 502 18211	Screw earth
914 0	4819 532 68363	Fastener
914 1	4819 505 18283	Nut M 5
915 1	4822 505 10547	Nut
923 0	4819 532 38101	Washer
923 5	4822 505 10148	Washer
923 6	4819 532 58107	Washer 8,3 x 30
923 7	4819 532 18174	Small plate
931 2	4819 492 38084	Spring Slide
932 3	4819 492 48131	Spring

Spare part list

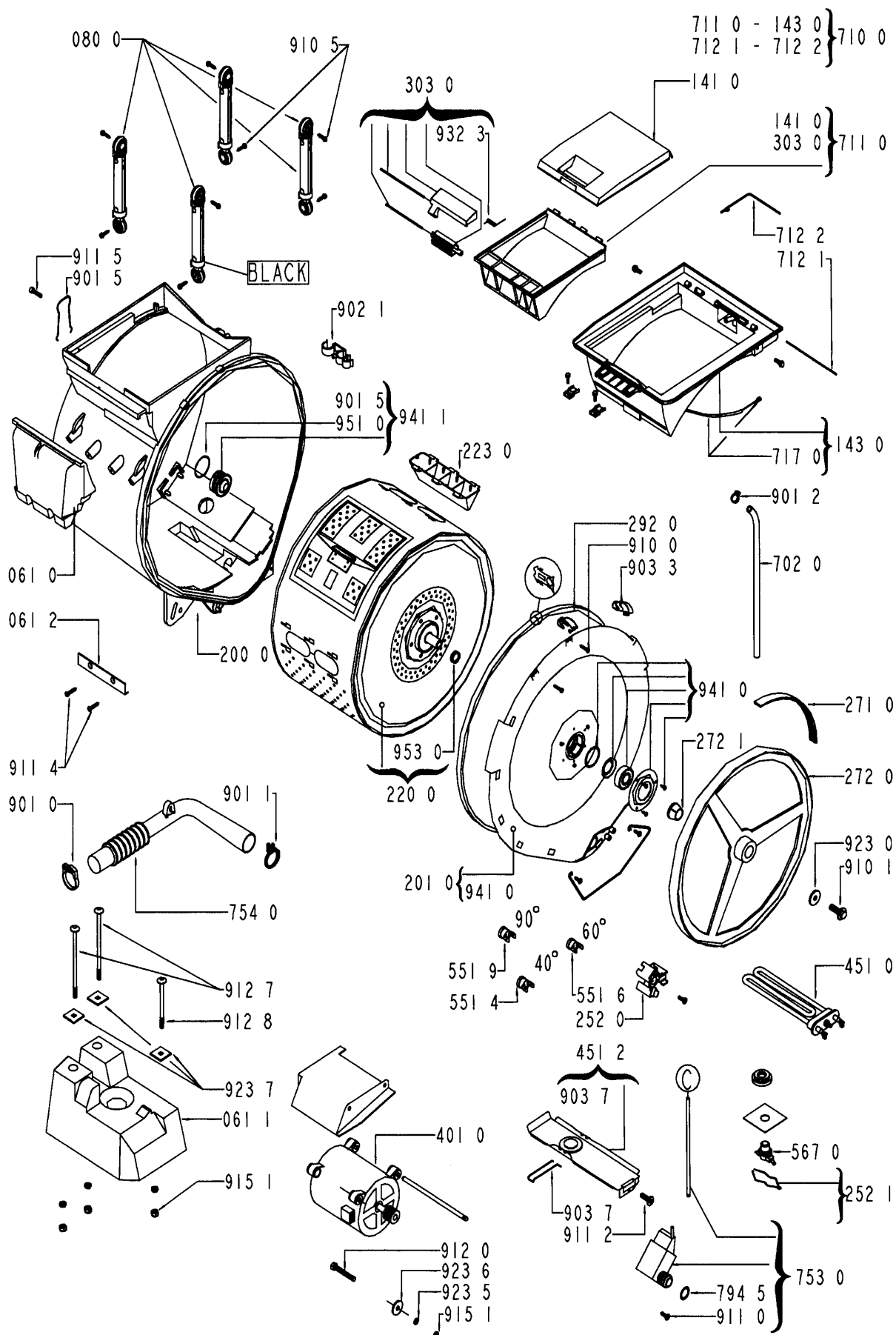
Model AWH 651 - ESLABON
Service No. 853765141360
Version 853765141360

Pos. No.	12NC Code	Description
934 0	4819 492 48125	Spring right
934 1	4819 492 48124	Spring left
941 0	4819 520 28029	Bearing, kit
941 1	4819 520 28026	Bearing
951 0	4819 530 58029	Gasket
953 0	4819 325 68041	Gasket V25
961 0	4819 440 19472	Shutter
993 0	4819 530 29028	Bow
993 4	4819 526 48128	Adapter

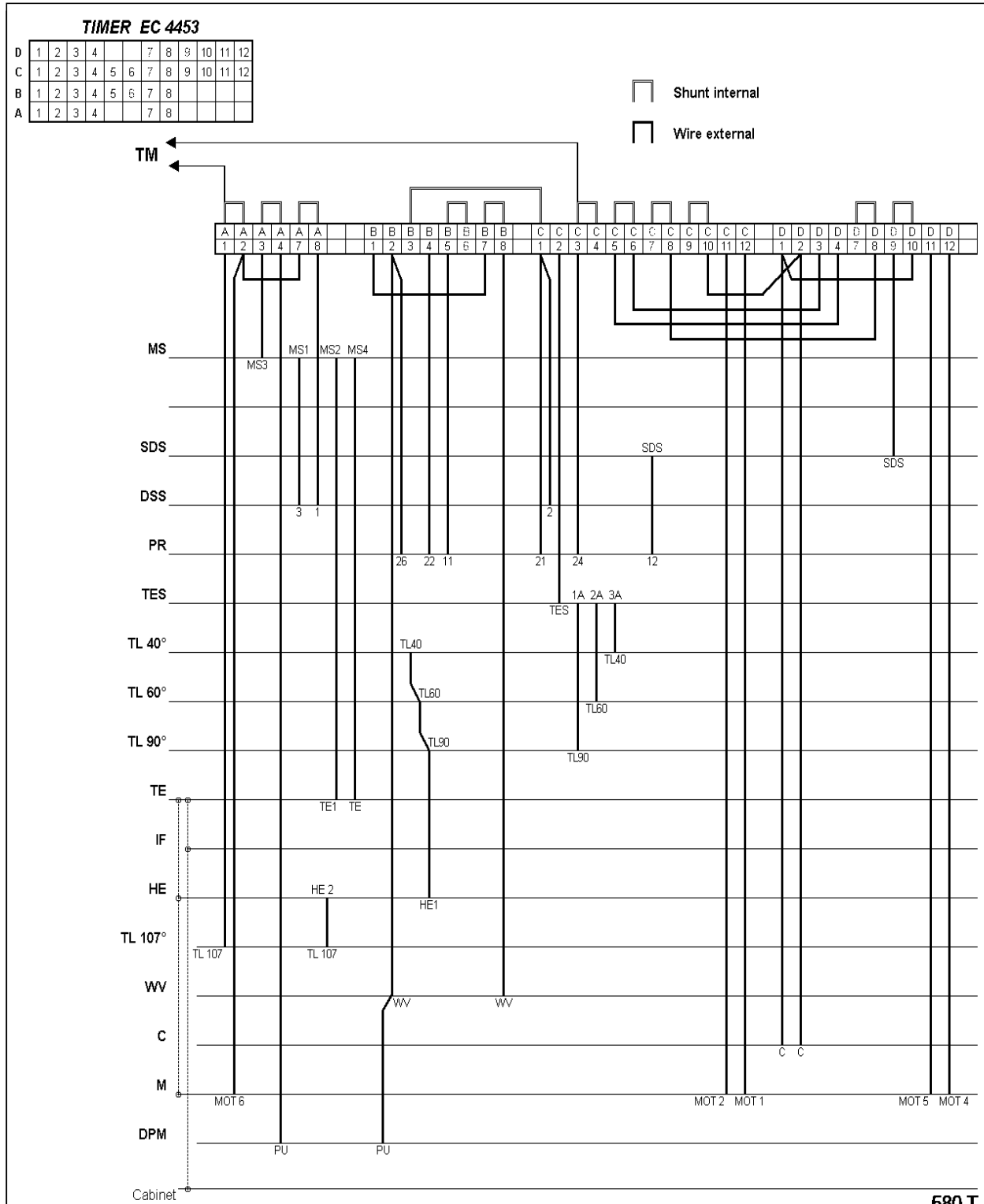
Exploded view



Exploded view



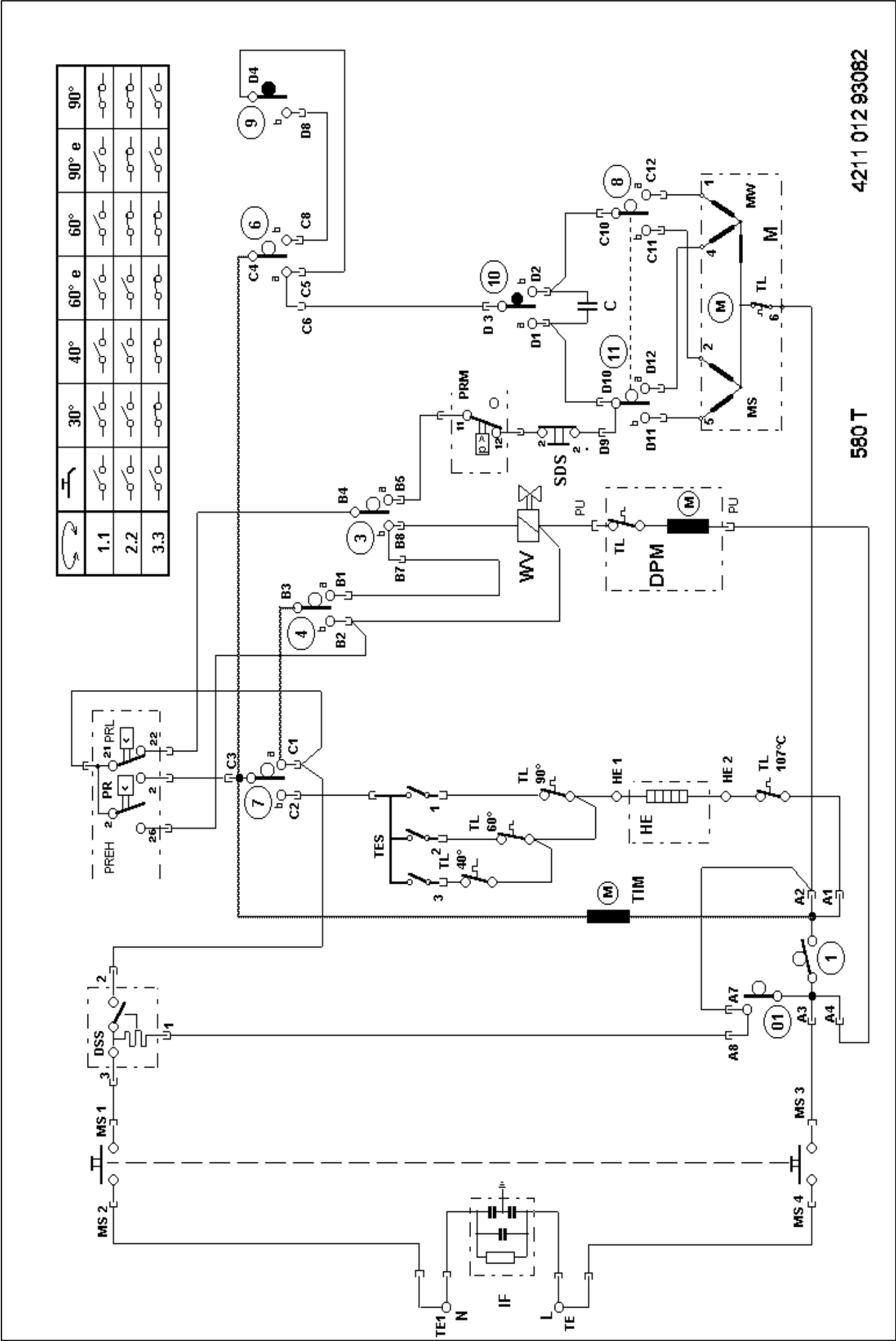
Wiring diagram



C CAPACITOR
 DSS DOOR SAFETY SWITCH
 SDS SPIN DRYING SWITCH
 PR PRESSOSTAT
 PRL PRESSOSTAT LOW LEVEL
 PRM PRESSOSTAT FOAM LEVEL
 PREH PRESSOSTAT OVERFLOW LEVEL
 MS MAINS SWITCH
 TES TEMPERATURE SELECTOR
 TL 40° FIXED THERMOSTAT 40°C

TL 60° FIXED THERMOSTAT 60°C
 TL 90° FIXED THERMOSTAT 90°C
 TE CONNECTING BLOCK
 IF INTERFERENCE CAPACITOR
 HE HEATING ELEMENT
 TL 107° TEMPERATURE LIMITER
 DPM DRAINING PUMP MOTOR
 M MOTOR
 WV WATER INLET VALVE

Circuit diagram



4211 012 93082

580 T

Program diagram

