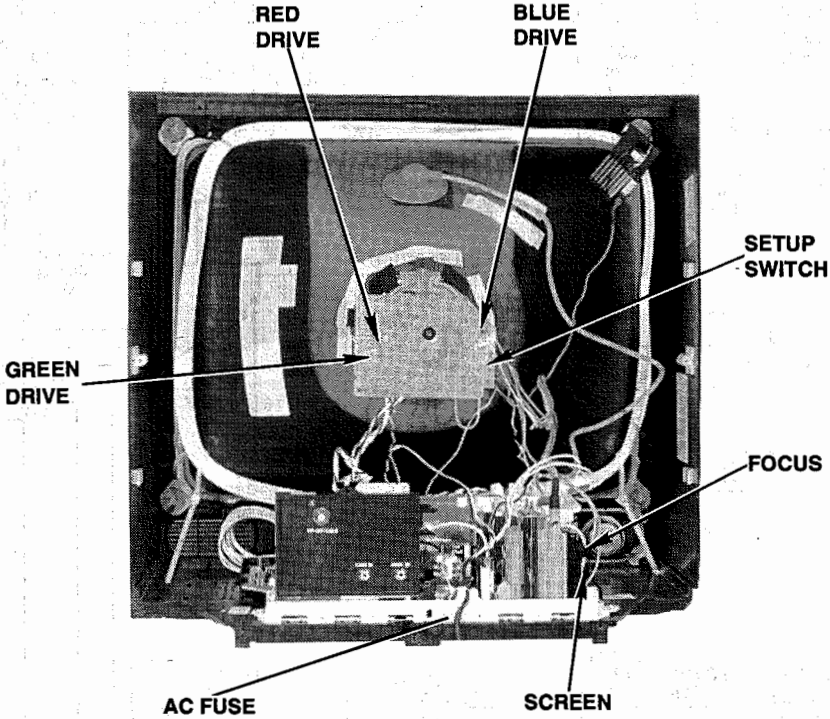


CABINET - REAR VIEW



TEST JIG HOOKUP				
Function	Chek-A-Color Adapter No.	PC Board Plug No.	Pin	Color
CRT	B239	3Y3	1	Red
Yoke	D499		2	Blue
Yoke Setting	YP3		3	Yellow
Comments	Focus Tap		4	Brown

The listing of any available replacement part herein in no case constitutes a recommendation, warranty, or guarantee by Howard W. Sams & Company as to the quality and suitability of such replacement part. The numbers of the listed parts have been compiled from information furnished to Howard W. Sams & Company by the manufacturers of the specific type of replacement part listed.

Reproduction or use, without express permission, of editorial or pictorial content, in any manner, is prohibited. No patent liability is assumed with respect to the use of the information contained herein.

©1992 by Howard W. Sams & Company
2647 Waterfront Parkway East Drive, Suite 300
Indianapolis, IN 46214-2012

Printed in the United States of America 5 4 3 2 1



92RE02284



0 81262 03014 1

PHOTOFACT® Technical Service Data

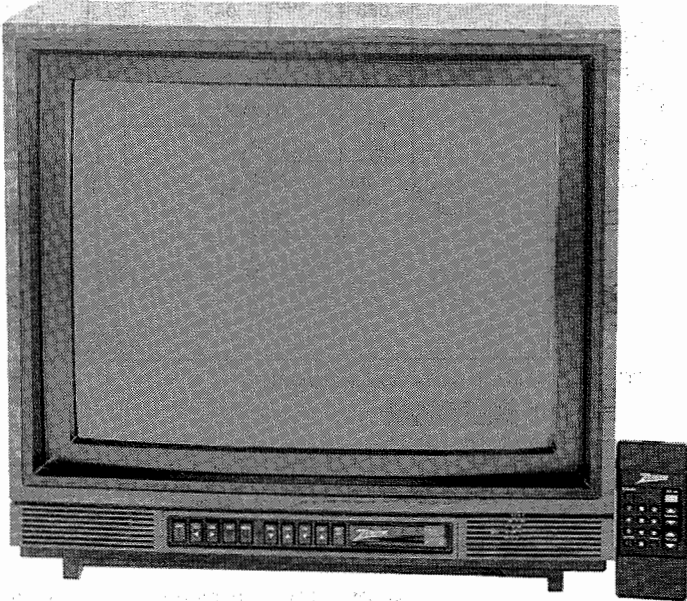
SET 3014

MODEL SS2045W

ZENITH

INDEX	
IC Functions	3
Parts List	
TV	1, 5, 6
Tuner 175 - 2303 - 02	6
Photos	
Cabinet - Rear View	1
CRT Board - Bottom View	4
Main Board - Bottom View	4
Placement Chart	3
Safety Precautions	1
Schematics	
CRT	2
Keyboard A - 16853	3
Keyboard A - 16854	2
Power Supply	2
Remote Control Receiver	
A - 15933	2
Schematic Notes	2
Tuning Control	3
Tuner 175 - 2303 - 02	3
TV	2
Test Equipment	1
Test - Jig Hookup	1
Tuner Terminal Guide	4
Tuner Voltage Chart	4

ZENITH
Model SS2045W



Essential coverage
for servicing a television receiver...

- Schematics
- Component locations
- Parts lists

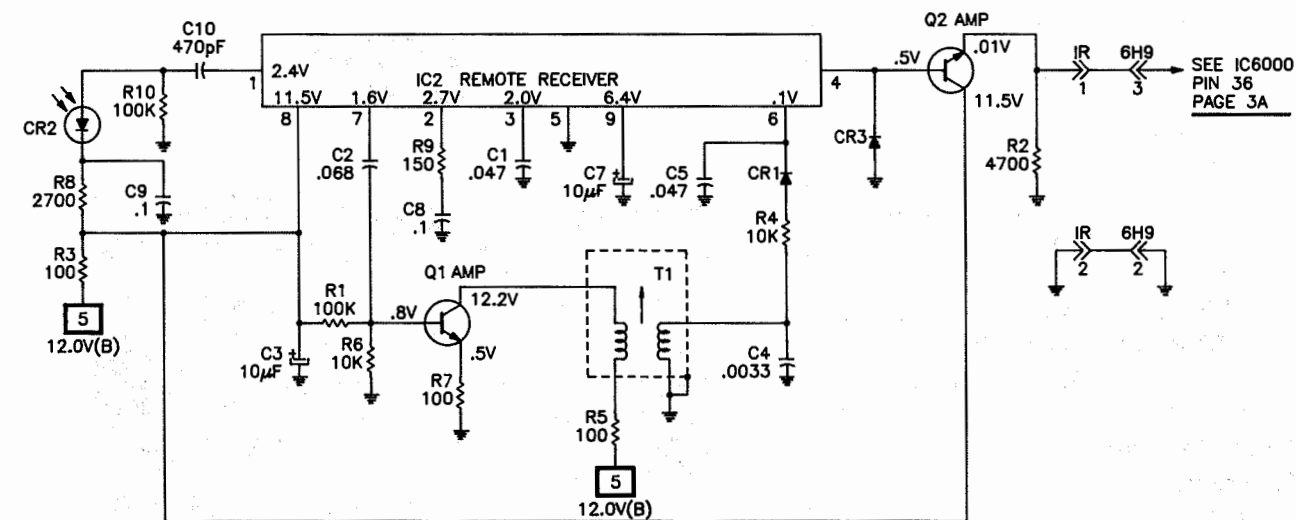
Coverage includes these additional models:
J2040W, S1930W1, SJ2063S5, SJ2063W5, SJ2063X5,
SJ5263Y, SJ5935Y, SJ7263BG, SJ7263W, SJ7935W,
SJ9935S, SS1935W, SS6045W, SS5045Y



HOWARD W. SAMS & COMPANY

JULY 1992 SET 3014

REMOTE CONTROL PREAMP A - 15933 SCHEMATIC

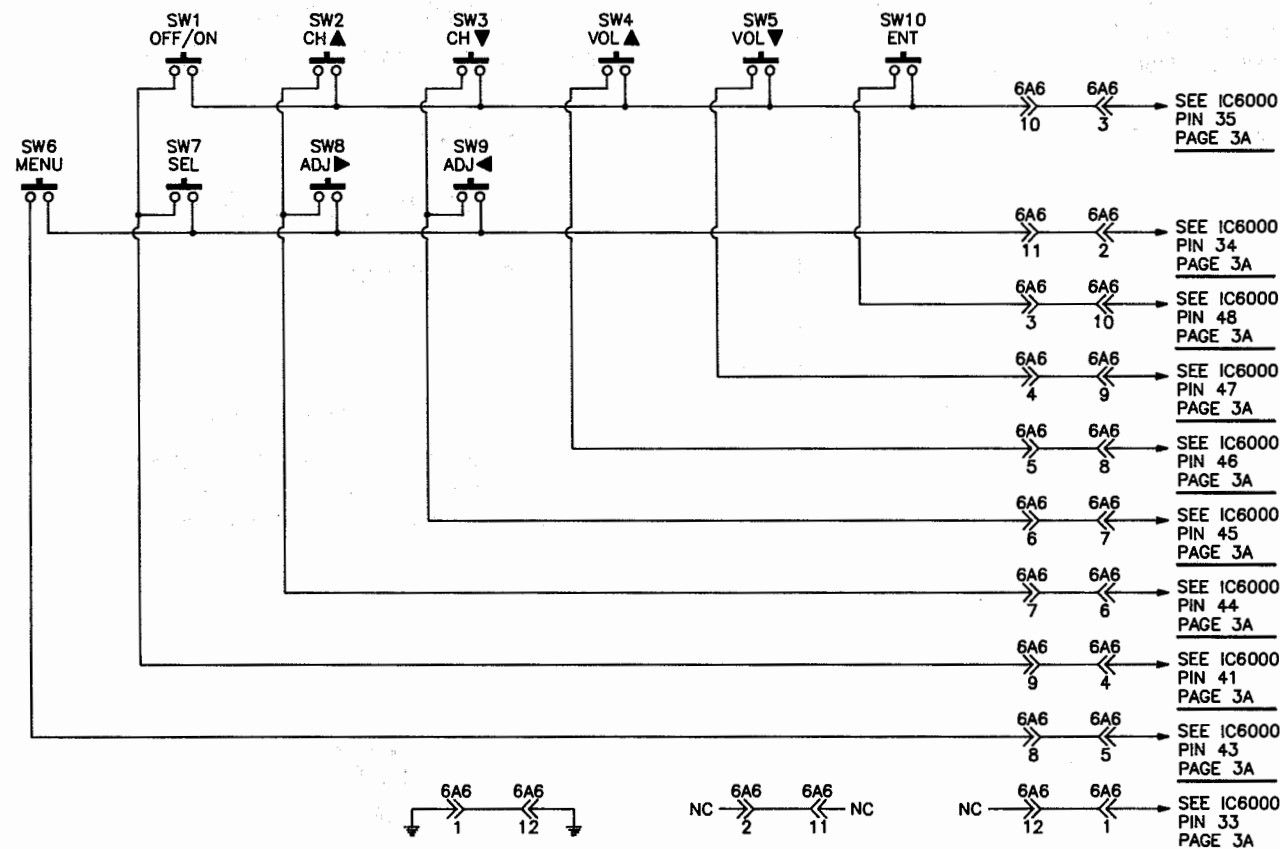


A PHOTOFAC STANDARD NOTATION SCHEMATIC

WITH CIRCUITRACE™

© Howard W. Sams & Co. 1992

KEYBOARD A - 16854 SCHEMATIC



A PHOTOFAC STANDARD NOTATION SCHEMATIC

© Howard W. Sams & Co. 1992

G

CRT SCHEMATIC

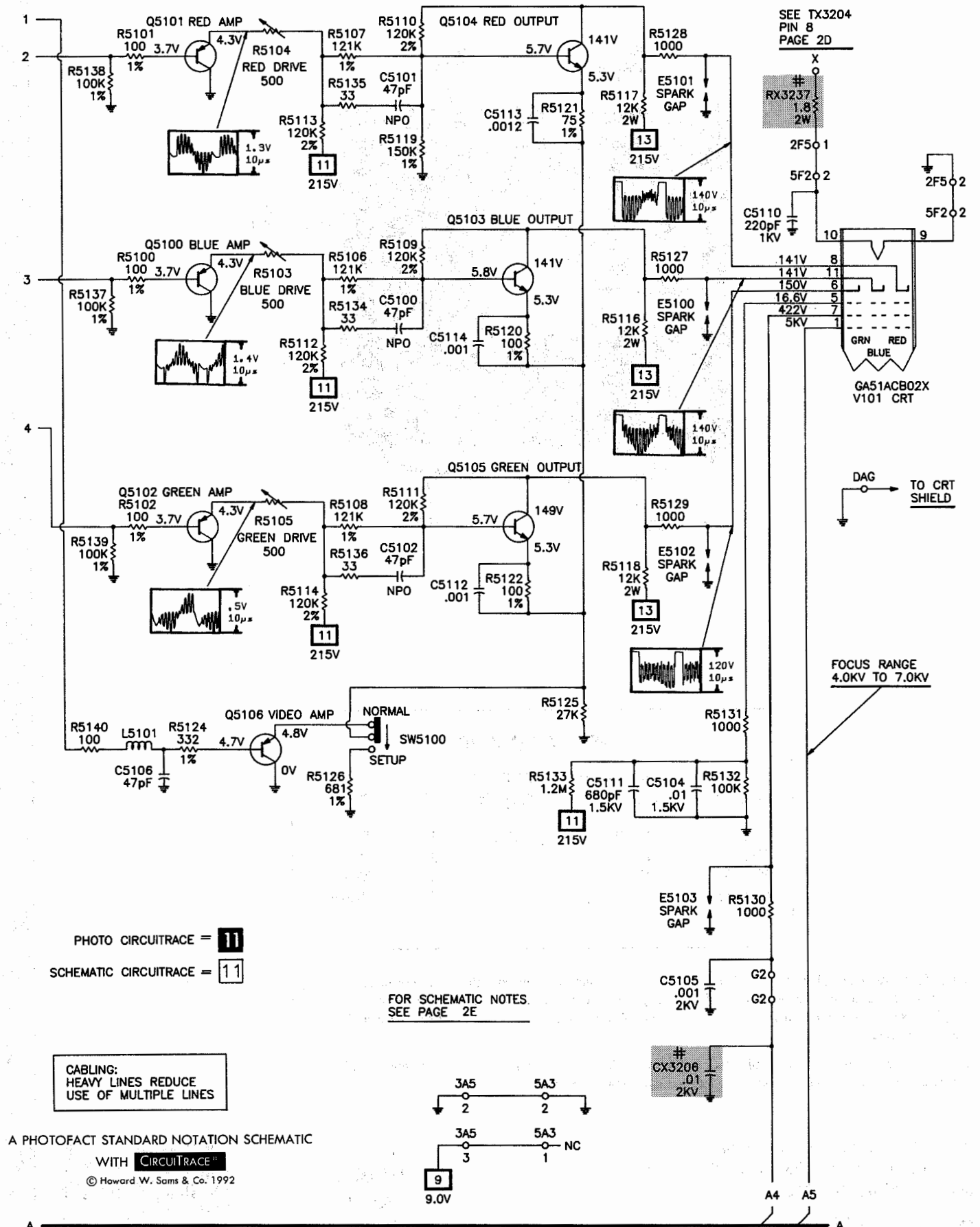


PHOTO CIRCUITRACE = 11

SCHEMATIC CIRCUITRACE = 11

FOR SCHEMATIC NOTES
SEE PAGE 2E

CABLING:
HEAVY LINES REDUCE
USE OF MULTIPLE LINES

A PHOTOFAC STANDARD NOTATION SCHEMATIC

WITH CIRCUITRACE™

© Howard W. Sams & Co. 1992

H

PARTS LIST continued

ELECTROLYTIC CAPACITORS

Item No.	Rating	Mfr. Part No.	Item No.	Rating	Mfr. Part No.
C1421	22 20% 10V Non-Polar	22-8186-06	# CX3003	220 20% 63V	22-8157-20
C2226	10 20% 25V Non-Polar	22-8188-05A	# CX3268	2200 20% 35V	22-7861-14
C5501	1 20% 50V Non-Polar	22-8190-01A	# CX3274	100 20% 16V	22-8153-18A
C5502	1 20% 50V Non-Polar	22-8190-01A	# CX3296	10 +50 -10% 315V	22-7999-02B
C5503	1 20% 50V Non-Polar	22-8190-01A	# CX3425	470 20% 200V	22-7819-19
# CX811	1000 20% 25V	22-8154-24	# CX3436	330 20% 200V	22-7908-04B
# CX820	1000 20% 25V	22-8154-24	# CX3438	1000 20% 25V	22-8155-24
# CX2105	220 20% 35V	22-8155-20	# CX3444	470 20% 25V	22-8154-22
# CX2109	2200 20% 25V	22-7860-14	# CX3445	2200 20% 25V	22-8154-26
# CX2110	100 20% 35V	22-7861-09	# CX3451	470 20% 25V	22-8154-22
# For SAFETY use only equivalent replacement part.					

COILS & TRANSFORMERS

Item No.	Function	Mfr. Part No.	On-Unit No.	Russell Part No.
DY1	Yoke Horiz. 2.17mH Vert. 20.0mH	95-4023-06 (1), (2)		-
	Yoke	95-3705-08 (3)		-
	Yoke	95-3705-09 (4)		-
# LX3401	Line Choke	95-4285 (1)		-
T3205	Horizontal Driver	95-4300 (1)		-
# TX3204	Horizontal Output	95-4302 (1), (5)		FBT-210
# TX3431	Chopper	95-4279-01		-
# For SAFETY use only equivalent replacement part.				
(1) Number on unit.				
(2) Used in Models: J2040W, SS2045W, SJ2063S5, SJ2063W5, SJ2063X5, SJ5263Y, SJ7263BG, SJ7263W, SS5045Y, SS6045.W				
(3) Used in Models: SJ5935Y, SS1935W.				
(4) Used in Models: S1930W1; SJ7935W, SJ9935S.				
(5) Includes R3200A, Focus and R3200B, Screen controls.				

CAPACITORS

Item No.	Rating	Mfr. Part No.	Item No.	Rating	Mfr. Part No.
C1206	30 5% 50V NPO	22-7621-21B	# CX3007	330 10% 500V	22-7786-08C
C1208	24 5% 50V NPO	22-7619-19B	# CX3206	.01 20% 2KV	22-7523-01D
C1213	30 5% 50V N150	22-7631-20B	# CX3220	530 10% 3KV	22-8063
C1214	6 ±.25pF 50V NPO	22-7621-06B	# CX3229	.0068 3% 1.6KV	22-8229-20
C2202	16 5% 50V NPO	22-8033-17	# CX3231	530 5% 3KV	22-8063-02
C3411	.001 10% 1KV	22-8160-01	# CX3233	.68 10% 200V	22-8159
C3428	.001 10% 2KV	22-7523	# CX3235	.0047 10% 500V	22-7786-21
C3429	.001 10% 2KV	22-7523	# CX3260	470 10% 1KV	2207811-01A
C3440	.018 5% 1.25KV	22-8008-15	# CX3261	.39 5% 250V	22-7876-19
C5103	.01 +80 -20% 1.5KV	22-7755	# CX3264	470 10% 1KV	22-7811-01A
C5104	.01 +80 -20% 1.5KV	22-7755	# CX3400	.0047 20%	22-7431-06
C5105	.001 10% 2KV	22-7523	# CX3402	.001 10% 1KV	22-7811A
C5106	.001 10% 2KV	22-7523	# CX3403	.001 10% 1KV	22-7811A
C5110	220 20% 1KV	22-7811-03A	# CX3404	.001 10% 1KV	22-7811A
C5111	680 10% 1.5KV	22-7755-01	# CX6045	470 20% 10V	22-8152-22A
# CX3004	.1 5% 100V	22-7773-24	# CX6400	1000 20% 25V	22-8154-24
# For SAFETY use only equivalent replacement part.					

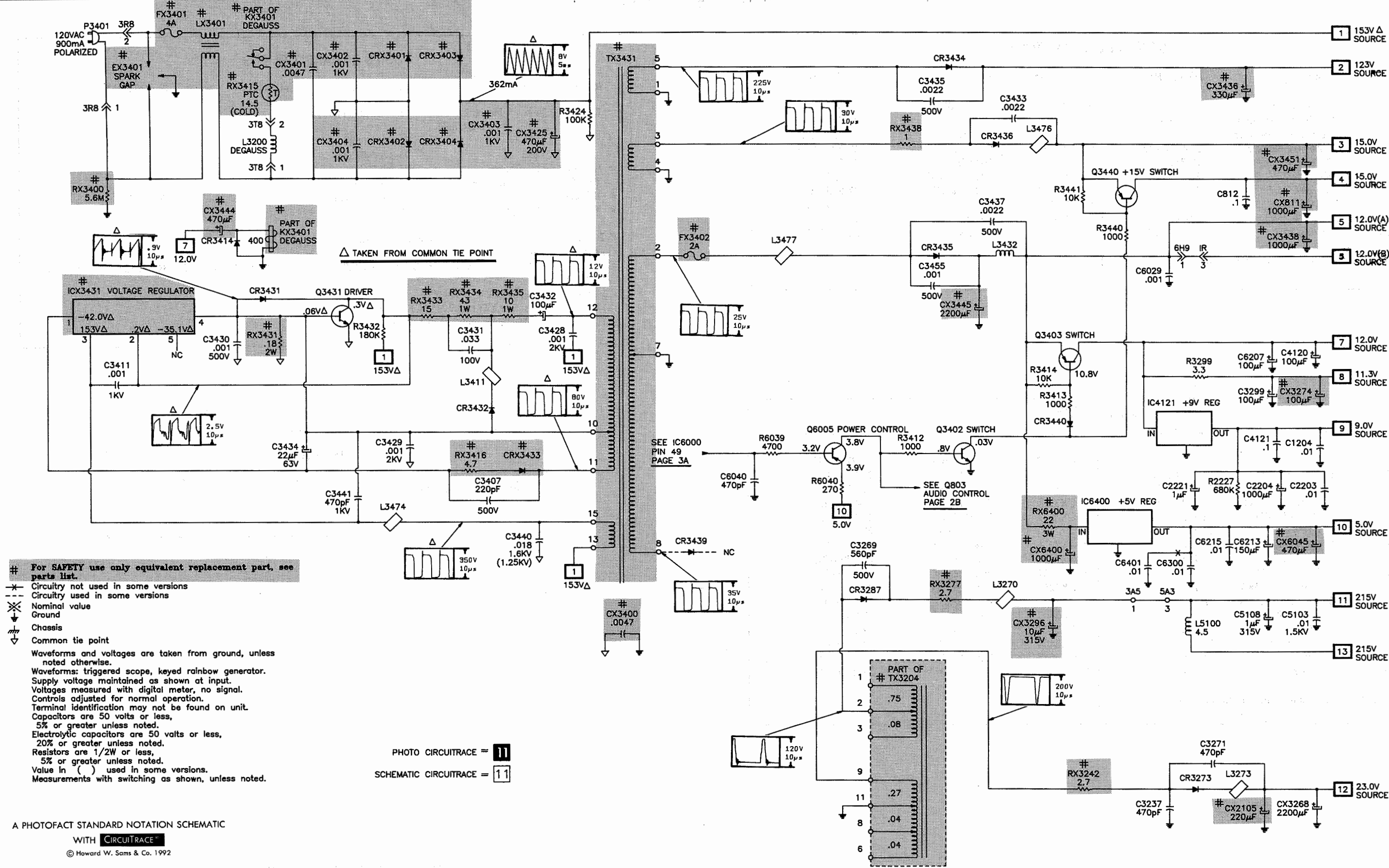
SPEAKER

Item No.	Description	Mfr. Part No.	Quam Part No.
SP1	2 1/4" X 3 5/8" 1 1/2W	49-1369	-

ZENITH

MODEL SS2045W

POWER SUPPLY SCHEMATIC



SAFETY PRECAUTIONS

TEST EQUIPMENT

SERVICE WARNING

ONLY qualified service technicians who are familiar with safety checks and guidelines should perform service work. For continued SAFETY:

- 1. Before replacing parts, disconnect power source to protect electrostatically sensitive parts.
- 2. Do not attempt to modify any circuit unless so recommended by the manufacturer.
- 3. When servicing chassis, use an isolation transformer between the line cord and power receptacle.

SERVICING HIGH VOLTAGE AND PICTURE TUBE

Use EXTREME CAUTION when servicing the High Voltage circuits.

- 1. To discharge static High Voltage, connect a 10 kilohm resistor in series with a test lead between chassis and picture tube anode lead.
- 2. DO NOT lift picture tube by the neck.
- 3. ALWAYS wear shatterproof goggles when handling picture tube to protect eyes in case of implosion.

X-RAY RADIATION AND HIGH VOLTAGE LIMITS

Be aware of the instructions and procedures covering x-ray radiation. In solid-state receivers and monitors, the picture tube is the only potential source of x-rays.

- 1. Keep an accurate High Voltage meter available at all times. Check meter calibration periodically.
- 2. Whenever servicing a chassis, check High Voltage at various brightness levels to be sure it is regulating properly.
- 3. Keep High Voltage at rated value, NO HIGHER. Excessive High Voltage may cause x-ray radiation or failure of associated components. DO NOT depend on protection circuits to keep voltage at rated value.
- 4. When troubleshooting a set with excessive High Voltage, avoid close contact with picture tube. DO NOT operate set longer than necessary. To locate the cause of excessive High Voltage, use a variable AC transformer to regulate voltage.
- 5. In present chassis, many electrical and mechanical components have safety-related characteristics which are not detectable by visual inspection. Such components are identified by a # on both the schematic and the parts list. For SAFETY, use only equivalent replacement parts when replacing these components.

SAFETY CHECKS -- FIRE AND SHOCK HAZARD

Cold Leakage Checks for Sets with Isolated Ground

- 1. Unplug the AC cord, connect a jumper across the plug prongs, and turn the power switch ON.
- 2. Use an ohmmeter to measure the resistance between the jumpered AC plug and any exposed metal cabinet parts such as antenna screw heads, control shafts, or handle brackets. Exposed metal parts with a return path should measure between 200 kilohms and 5 megohms. Parts without a return path must register infinity.

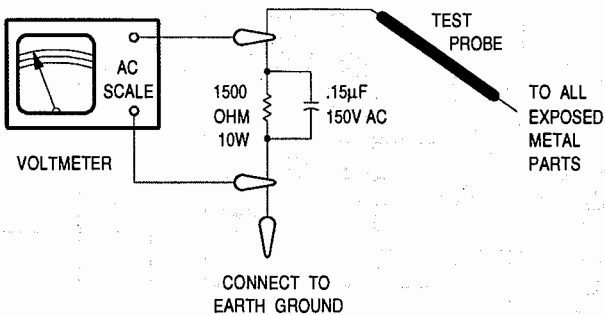
Hot Leakage Current Check

- 1. Plug the AC cord directly into AC outlet. DO NOT use an isolation transformer.
- 2. Use a 1500-ohm, 10-watt resistor in parallel with a .15-microfarad 150 Volts AC capacitor to connect between any exposed metal parts on the set and a good earth ground. (See figure below.)
- 3. Use an AC voltmeter with at least 1000 ohms-per-volt sensitivity to measure the voltage across the resistor. Check all exposed metal parts and measure voltage at each point.
- 4. Voltage readings should not exceed .75 volts RMS (5 milliamps AC). Any value exceeding this limit constitutes a potential shock hazard and must be corrected.
- 5. If AC plug is not polarized, reverse the AC plug and repeat exposed metal part voltage measurement at each point.

GENERAL GUIDELINES

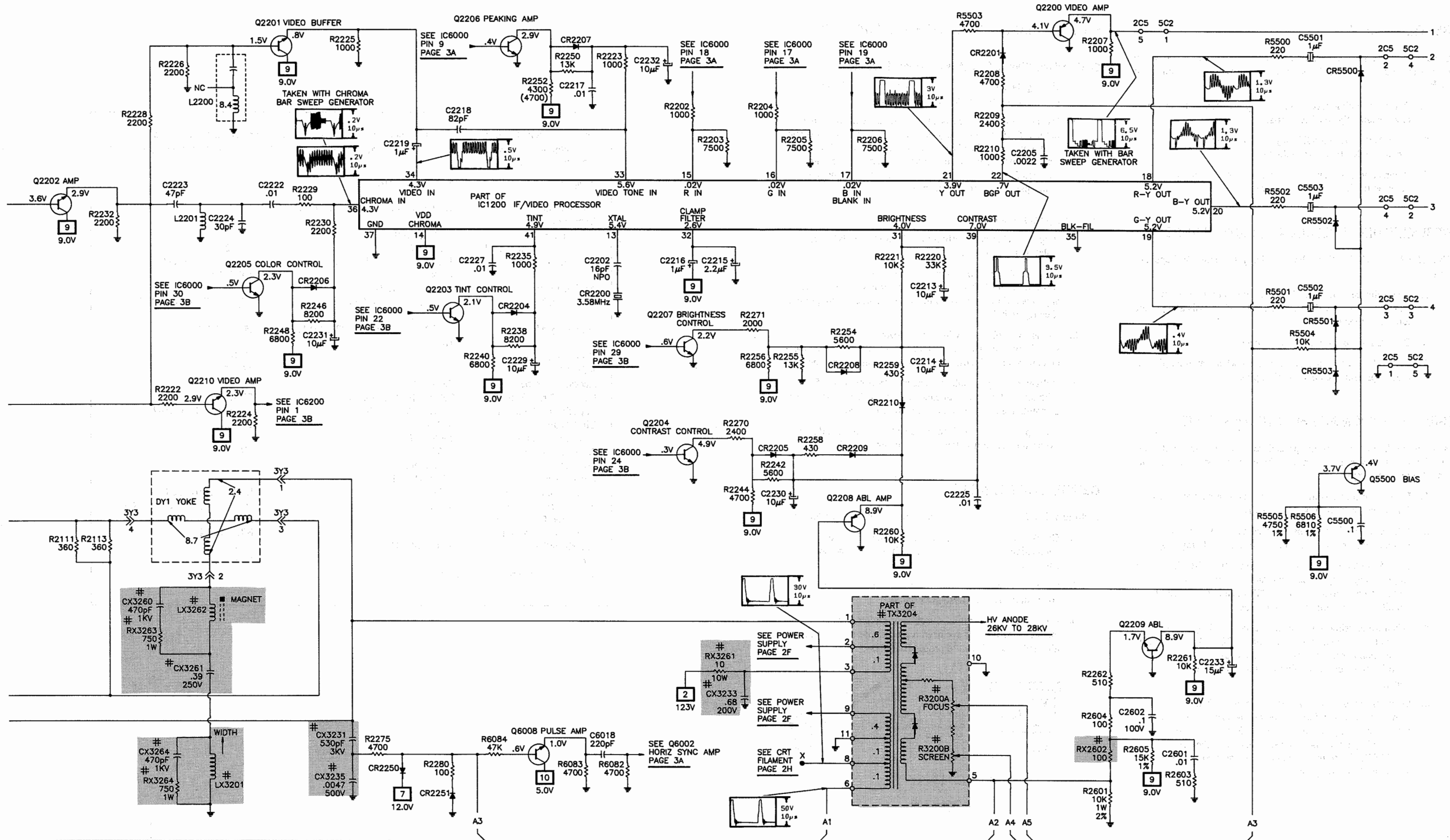
Perform a final SAFETY CHECK before returning set to customer.

- 1. Check repaired area for poorly soldered or de-soldered connections, and check entire circuit board for solder splashes.
- 2. Check inner board wiring for pinched wires or wires contacting any high-wattage resistors.
- 3. Check that all control knobs, shields, covers, grounds and mounting hardware have been replaced. Be sure to replace all insulators and restore proper lead dress.



Test equipment listed by participating manufacturers illustrates typical or equivalent equipment used by Sams engineers to obtain measurements. This equipment is compatible with most types used by field service technicians.

Equipment	B&K Precision No.	Sencore No.
Oscilloscope	1541A, 2120, 2125, 2160, 2190, 2522	SC61
Generators		
RGB	1249A, 1260	RG67
Multiburst Signal	1251, 1260	VA62A
Color Bar	1211A, 1249A, 1251, 1260	VA62A, CG25, NT64
TV Stereo	2009	ST65, ST66
Analog VOM	114, 117, 177, 214	-
Digital VOM	377, 388HD, 2700 Series, 2831A, 2860, 2900 Series	DVM37, DVM56A, SC61
Frequency Meter	1803A, 1804A, 1805, 1822, 1851, 1855	FC71, SC61
Hi-Voltage Probe	HV-44	HP200
VOM/DMM	-	TP212
Accessory Probes	PR-28(HV)	-
Isolation Transformer	TR110, 1604, 1653, 1655	PR57
Capacitance Analyzer	810A, 815, 820, 830	LC76, LC101, LC102
CRT Analyzer	480, 490	CR70
Temperature Probe	TP-28, TP-30	-
AC Leakage Tester	1655	PR57
Logic Probe	DP21, DP51	-
Logic Pulser	DP31, DP101	-
Inductance Analyzer	875A	LC76, LC101, LC102
Flyback Yoke Tester	875A	VA62A, LC76, LC101, LC102
TV Stereo Power Monitor	-	SR68
Field Strength Meter	-	FS73, FS74
Transistor Tester	510, 520B, 530	TF46
Video Analyzer	-	VA62A
Modulator/Converter	1201	-



PARTS LIST

Important Parts Information

- The parts listed here are those not usually available from a well-stocked supply cabinet or bin.
- Where items may be replaced with equivalent parts, several alternates are shown from participating vendors.
- On the parts lists, safety items are marked with a # to remind you that only exact replacements are recommended for these items.
- When ordering parts, state the model number, part number, and description.

Obtaining Parts

Many of these parts are available from your local Sams authorized distributor or the manufacturer of the equipment. Call Sams for the name of your nearest distributor:

800-428-7267

Or consult the Sams *Annual Index* for the address of the original equipment manufacturer.

Participating Vendors

Information on test equipment and replacement parts is listed in these pages for the following participating vendors. Consult the Sams *Annual Index* for their current address.

- B&K Precision
- Custom Components Corporation (Chek-A-Color)
- EVG / Russell Industries, Inc.
- NTE Electronics, Inc. (NTE)
- Philips ECG Company (ECG)
- PTS Electronics Corporation (PTS)
- Quam-Nichols Co. (Quam)
- Sencore, Inc.
- Thomson Consumer Electronics, Inc. (SK, TCE)

SEMICONDUCTORS

(Select replacement for best results.)

Item No.	Type No.	Mfr. Part No.	NTE Part No.	ECG Part No.	TCE Part No.
CR1	-	103-398	-	-	-
CR2	-	162-12	-	-	-
CR3	-	103-398	-	-	-
CR2101	-	103-254-01	NTE116	ECG116	SK3313
CR2150	-	103-476-18A	-	-	-
CR2201, 2	-	103-398	-	-	-
CR2204 - 10	-	103-398	-	-	-
CR2250, 51	-	103-471A	-	-	-
CR3210	-	103-471A	-	-	-
CR3273	-	103-339-04A	NTE580	ECG580	SK5036
CR3287	-	103-326A	NTE552	ECG552	SK9000
CR3414	-	103-254-01	NTE116	ECG116	SK3313
CR3431, 2	-	103-344A	NTE116	ECG116	SK3313
CR3434	-	103-339-04A	NTE580	ECG580	SK5036
CR3435	-	103-417-03A	NTE580	ECG580	SK5036
CR3436	-	103-344A	NTE116	ECG116	SK3313
CR3440	-	103-254-01	NTE116	ECG116	SK3313
CR5500 - 03	-	103-398	-	-	-
CR6000	-	103-398	-	-	-
# CRX3004	-	103-472A	-	-	-
# CRX3006	-	103-344-02A	NTE116	ECG116	SK3313
# CRX3401 - 04	-	103-467A	-	-	-
CRX3433	-	103-344A	NTE116	ECG116	SK3313
IC1	-	221-187	NTE1682	ECG1682	SK7713
IC800	-	221-598	-	-	-
IC820	-	221-528	-	-	-
IC1200	-	221-679	-	-	-
IC1400	CXA1264AS	221-683	-	-	-
IC2100	-	221-637	-	-	-
IC4121	-	221-166-09	-	-	-
IC6000	-	221-685	-	-	-
IC6200	-	221-656	-	-	-
IC6300	-	221-636	-	-	-
IC6400	-	221-166-00	NTE960	ECG960	SK3591
	-	221-166	NTE960	ECG960	SK3591
# ICX3431	-	223-28	-	-	-
Q1, 2	-	121-1130	-	-	-
Q800	-	121-1232A	NTE123AP	ECG123AP	SK3854
Q801, 2	-	121-1227A	-	-	-
Q803, 4	-	121-1232A	NTE123AP	ECG123AP	SK3854
Q1200	-	121-1232A	NTE123AP	ECG123AP	SK3854
Q1201	-	121-1262A	-	-	-
Q2200	-	121-1256A	-	-	-
Q2201 - 7	-	121-1232A	NTE123AP	ECG123AP	SK3854
Q2208	-	121-1256A	-	-	-
Q2209 - 11	-	121-1232A	NTE123AP	ECG123AP	SK3854
Q3202	-	121-1232A	NTE123AP	ECG123AP	SK3854
Q3206	-	121-1264-01A	-	-	-
Q3209	-	121-1232A	NTE123AP	ECG123AP	SK3854

For SAFETY use only equivalent replacement part.

SEMICONDUCTORS continued

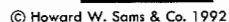
(Select replacement for best results.)

Item No.	Type No.	Mfr. Part No.	NTE Part No.	ECG Part No.	TCE Part No.
Q3402	-	121-1264-01A	-	-	-
Q3403	-	121-1102A	NTE290A	ECG290A	SK3114A
Q3431	-	121-1264-01A	-	-	-
Q3440	-	121-1102A	NTE290A	ECG290A	SK3114A
Q5100 - Q5102	-	121-1019	NTE159*	ECG159*	SK3466*
	-	121-1256A	-	-	-
Q5103 - Q5105	-	121-1034	NTE171	ECG171	SK3201
Q5106	-	121-1019	NTE159*	ECG159*	SK3466*
	-	121-1256A	-	-	-
Q5500	-	121-1256A	-	-	-
Q6000, 1	-	121-1263A	-	-	-
Q6002	-	121-1232A	NTE123AP	ECG123AP	SK3854
Q6005	-	121-1263A	-	-	-
Q6008	-	121-1232A	NTE123AP	ECG123AP	SK3854
# QX3208	-	121-1141-01	NTE2302	ECG2302	SK9422

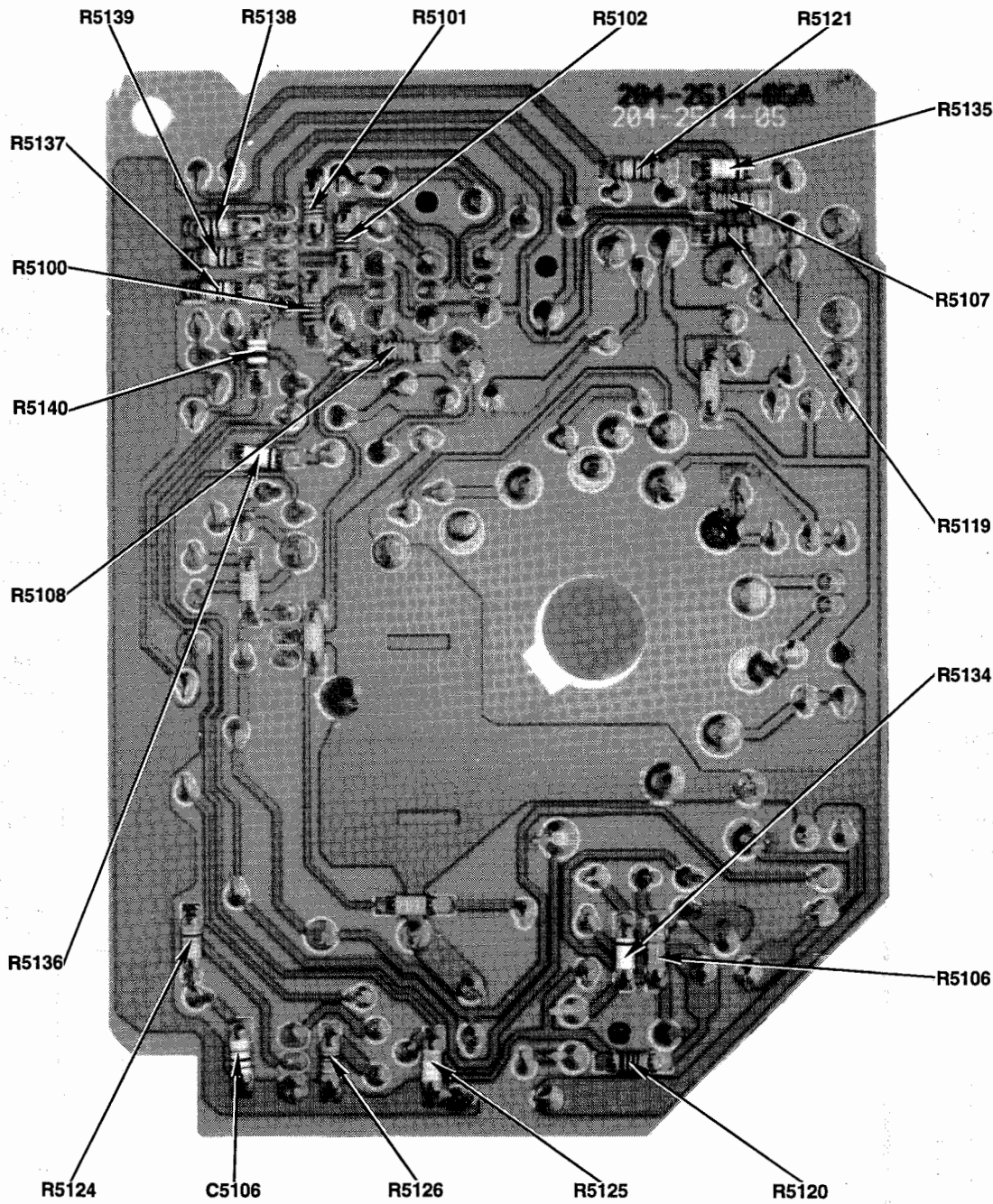
For SAFETY use only equivalent replacement part.

* Lead configuration may vary from original.

E



CRT BOARD - BOTTOM VIEW

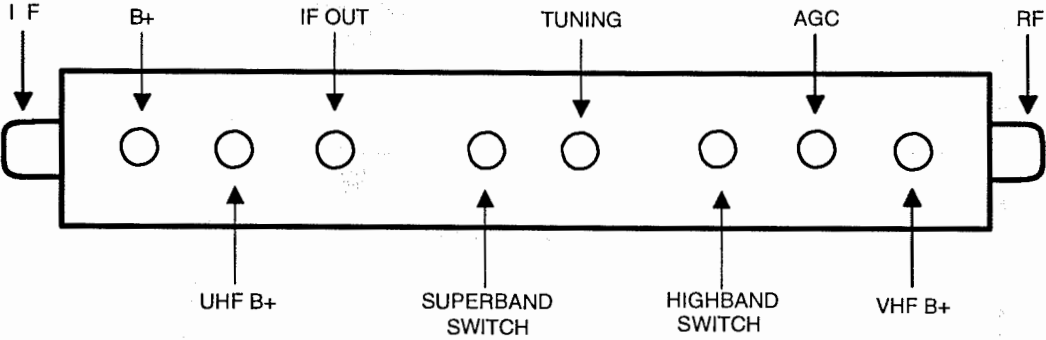


TUNER INFORMATION

TUNER VOLTAGE CHART			
	VHF Low Band	VHF High Band	UHF Band
B+	5.0V	5.0V	5.0V
UHF B+	0V	0V	11.4V
IF OUT	0V	0V	0V
SUPER			
BAND SW.	0V	0V	0V
TUNING	1.9V	12.5V	8.5V
HIGHBAND			
SW	0V	11.4V	0V
AGC	7.6V	7.6V	8.0V
VHF B+	11.4V	11.4V	0V

Note: VHF Low Band voltages taken on channel 2.
VHF High Band voltages taken on channel 7.
UHF Band voltages taken on channel 14.

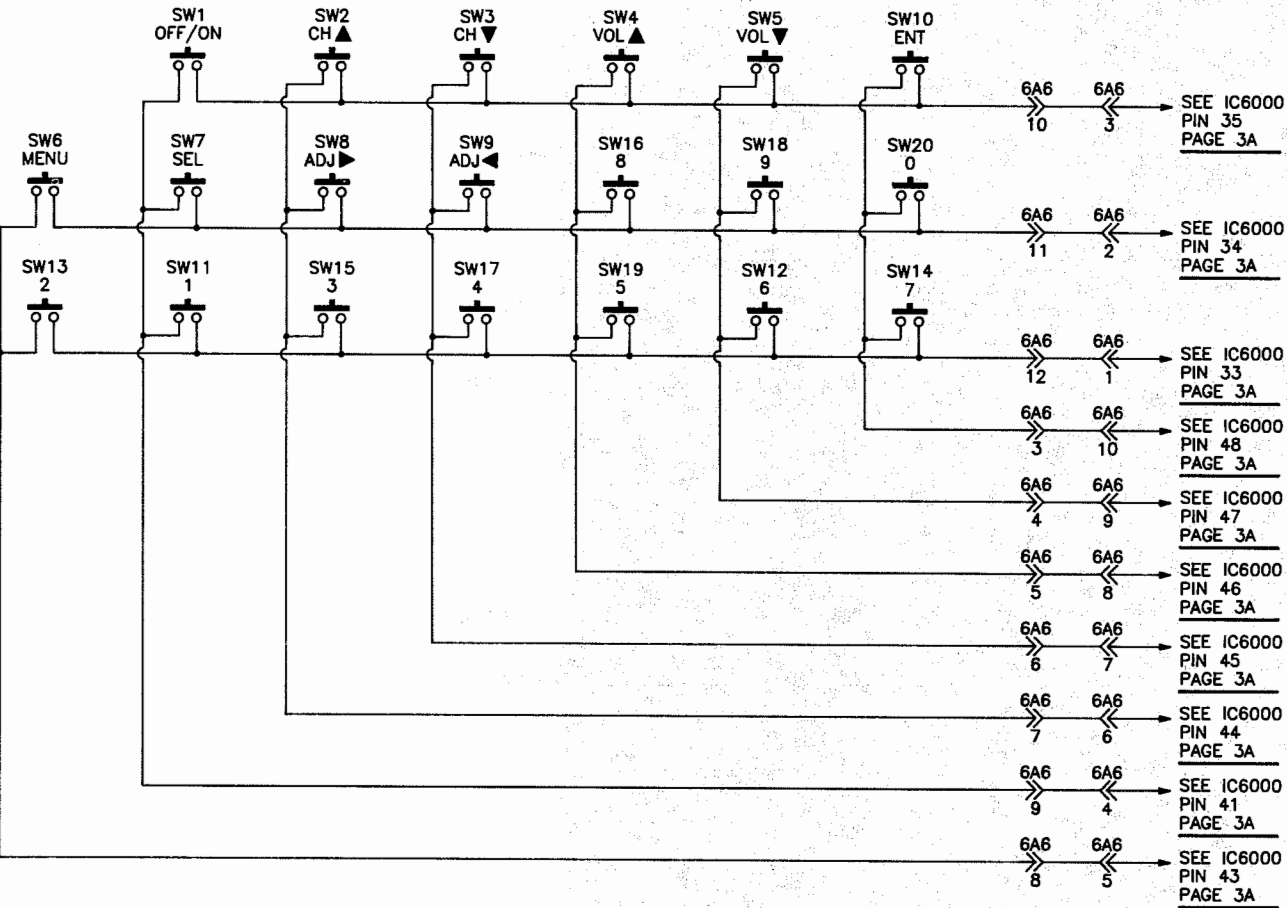
TUNER TERMINAL GUIDE



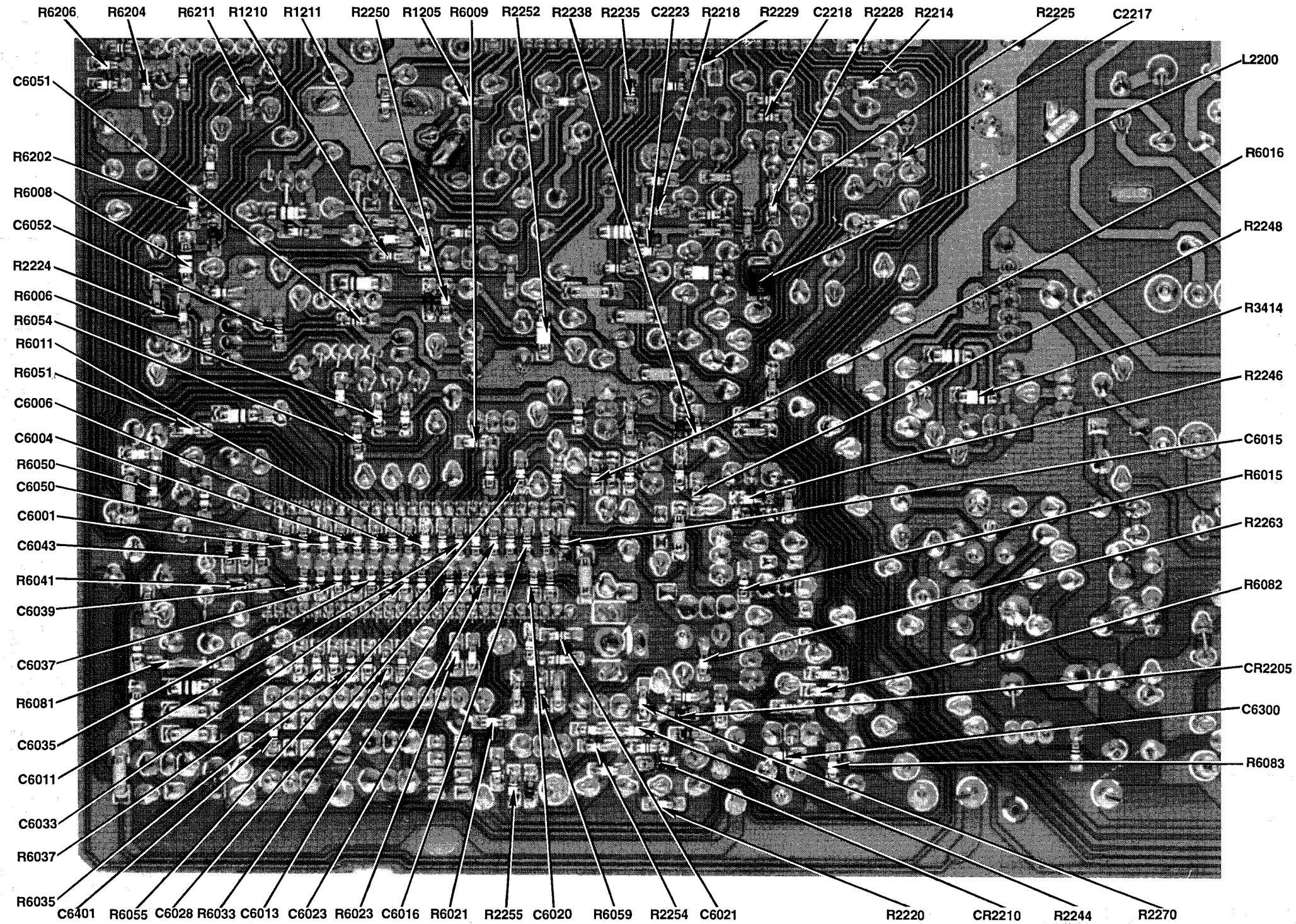
ZENITH

MODEL SS2045W

KEYBOARD A - 16853 SCHEMATIC



MAIN BOARD - BOTTOM VIEW - ENLARGEMENT



[illegible]

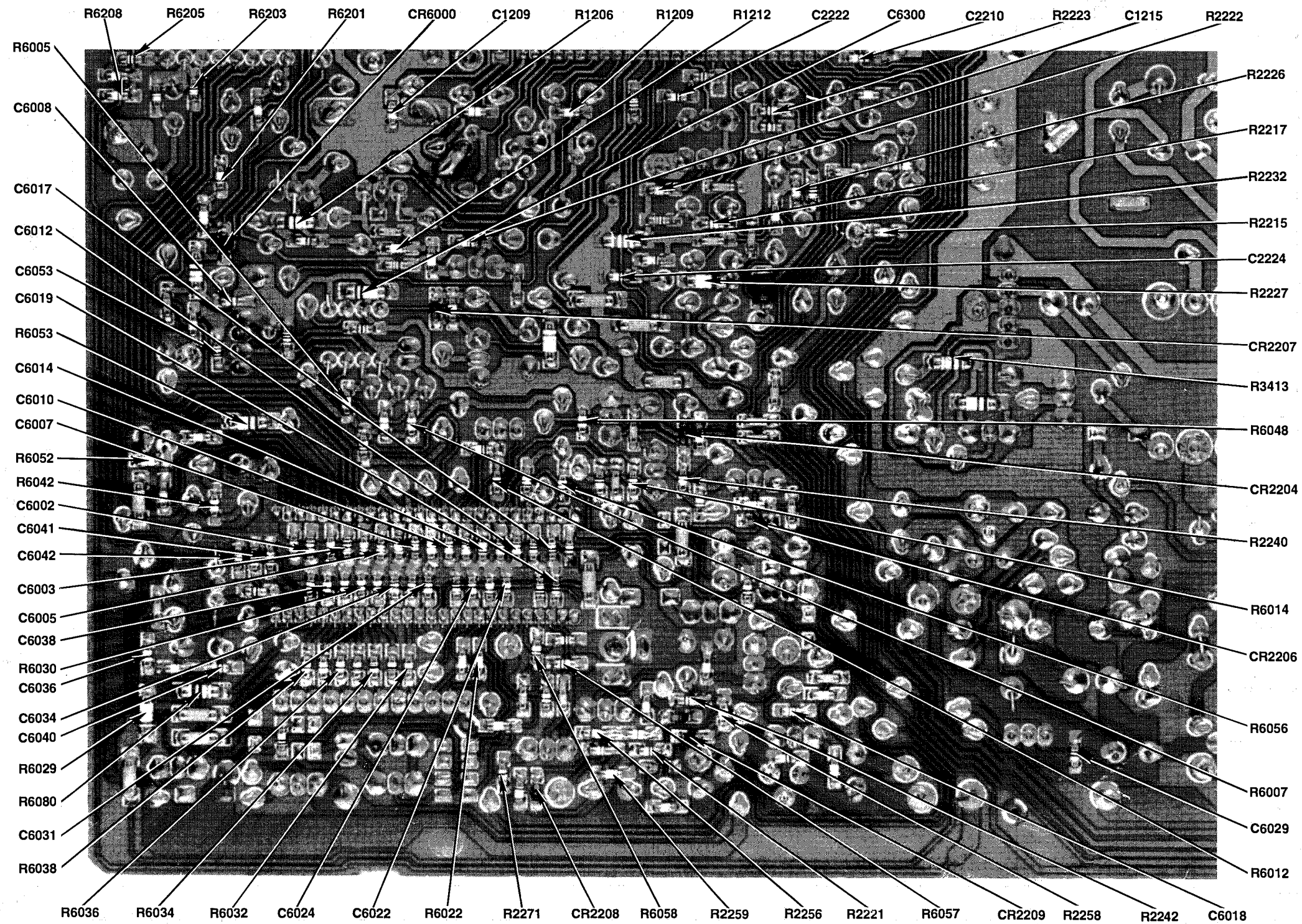
WITH CIRCUITRACE™

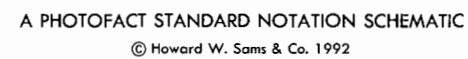
© Howard W. Sams & Co. 1992

SCHEMATIC CIRCUITTRACE = 11

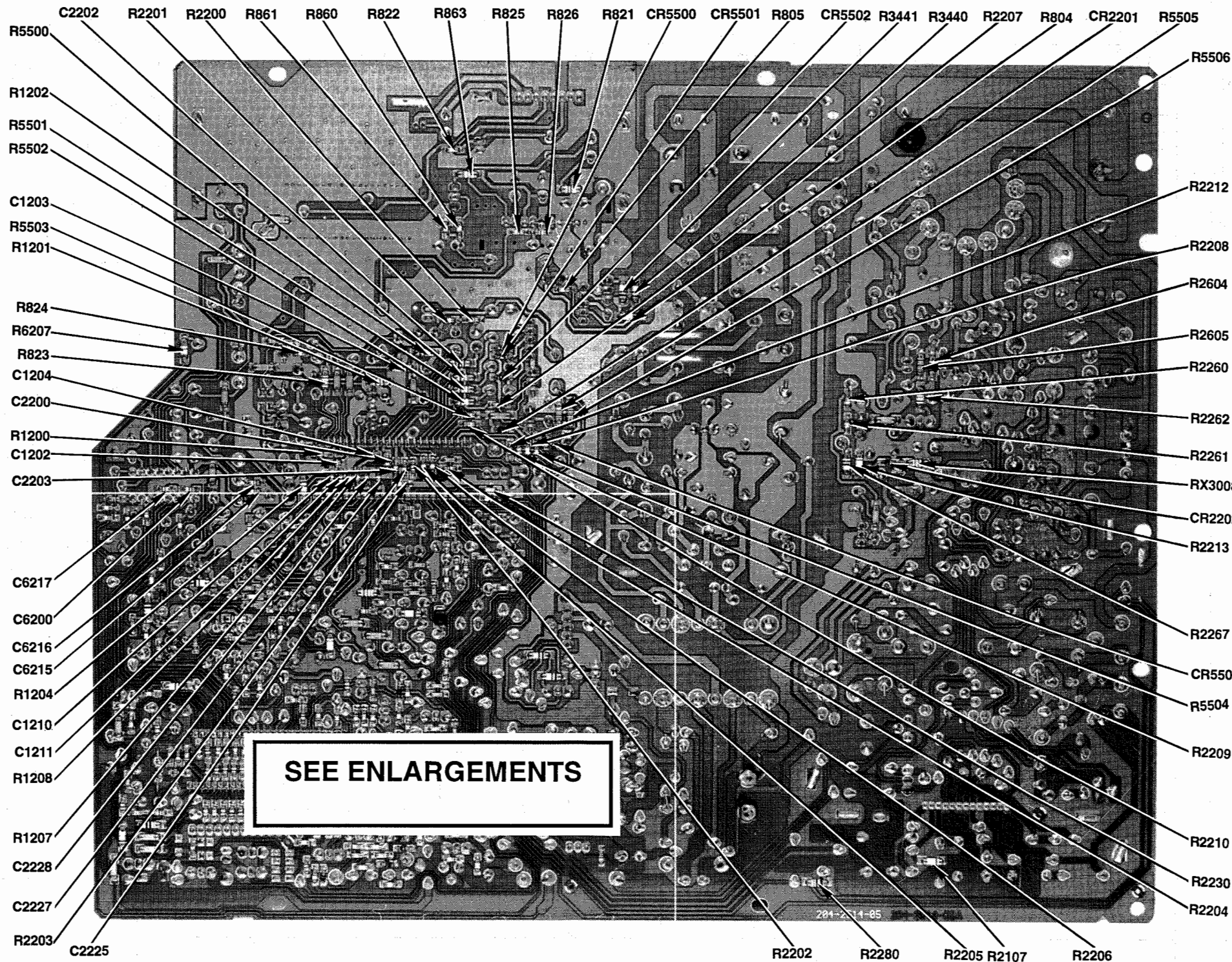
FOR SCHEMATIC NOTES
SEE PAGE 2E

MAIN BOARD - BOTTOM VIEW - ENLARGEMENT





MAIN BOARD - BOTTOM VIEW



PARTS LIST continued

MISCELLANEOUS

Item No.	Description	Mfr. Part No.	Notes
CR2200	Quartz Crystal	224-27	3.58MHz
CR2203	Resonator	224-131	503kHz
CR6200	Quartz Crystal	224-74-01	8MHz
# CX3201	Ferrite Bead	149-540-01	
# EX3401	Spark Gap	38-102	4KV
E5100	Spark Gap	52-2240-06A	
E5101	Spark Gap	52-2240-06A	
E5102	Spark Gap	52-2240-06A	
E5103	Spark Gap	52-2240-06A	
# FX3401	Fuse	136-23A	4Amp @ 250V Normal Lag
# FX3402	Fuse	136-144-30	2Amp @ 250V Normal Lag
J1	Jack	78-3402-01	Audio Input (White)
J2	Jack	78-3402-02	Video Input (Yellow)
# KX3401	Relay	195-138	Power
L3200	Degaussing Coil	20-4330-06 (1)	
	Degaussing Coil	20-4330-04 (2)	
L2200	Network	105-211	3.58mH Trap
L3270	Ferrite Bead	149-454	
L3273	Ferrite Bead	149-509-01	
L3411	Ferrite Bead	149-454	
L3474	Ferrite Bead	149-454	
L3476	Ferrite Bead	149-576-01	
L3477	Ferrite Bead	149-576-01	
L6000	Ferrite Bead	149-549	With Thru-Lead
L6001	Ferrite Bead	149-549	With Thru-Lead
L6002	Ferrite Bead	149-549	With Thru-Lead
# LX3210	Ferrite Bead	149-540-01	
P3401	Line Cord	A-16206-01	AC, Polarized
SW1	Switch	85-1691A	Off/On
SW2	Switch	85-1691A	Channel Up
SW3	Switch	85-1691A	Channel Down
SW4	Switch	85-1691A	Volume Up
SW5	Switch	85-1691A	Volume Down
SW6	Switch	85-1691A	Menu
SW7	Switch	85-1691A	Select
SW7	Switch	85-1691A	Adjust Down (4)
SW8	Switch	85-1691A	Adjust Up
SW8	Switch	85-1691A	Select (4)
SW9	Switch	85-1691A	Adjust Down
SW9	Switch	85-1691A	Adjust Up (4)
SW10	Switch	85-1691A	Enter

For SAFETY use only equivalent replacement part.

MISCELLANEOUS continued

Item No.	Description	Mfr. Part No.	Notes
SW11	Switch	85-1691A	1 (4)
SW12	Switch	85-1691A	6 (4)
SW13	Switch	85-1691A	2 (4)
SW14	Switch	85-1691A	7 (4)
SW15	Switch	85-1691A	3 (4)
SW16	Switch	85-1691A	8 (4)
SW17	Switch	85-1691A	4 (4)
SW18	Switch	85-1691A	9 (4)
SW19	Switch	85-1691A	5 (4)
SW20	Switch	85-1691A	0 (4)
SW5100	Switch	85-1792	Normal/Setup
U1200	Filter	224-121	4.5MHz Discriminator
U1201	Filter	224-106	45.75MHz SAW
U1202	Ceramic Filter	224-54	4.5MHz Bandpass
U1203	Ceramic Filter	224-23	4.5MHz Trap
V1	CRT	GA51ACB02X	(1)
	CRT	GA48ACB02X	(2)
	Assembly (3)	A-16854-01	Keyboard, Except Model J2040W
	Assembly (3)	A-16853	Keyboard, Model J2040W
	Assembly	1-224-05	UHF/VHF Antenna , Except Models: SJ2063S5, SJ7263BG.
	Assembly	1-224-03	UHF/VHF Antenna , Models: SJ2063SF, SJ7263BG.
	Assembly	A-14323	Balun
	Assembly	A-13059-01	Purity and Convergence, Part of Deflection Yokes, Part Numbers 95-4023-60 or 95-3705-09, .
	Fuse Holder	19-1199-01	
	Module (3)	9-1118-01	Main
	Module	A-15933	Infrared Remote Detector (5)
	Socket	78-3394	CRT
	Tape	940-21	Yoke Wedge
	Transmitter	124-128-37	Remote Control (6)
	Transmitter	124-157-21	Remote Control (7)
	Transmitter	124-128-41	Remote Control (8)
	Tuner (3)	175-2303-02	UHF/VHF Varactor
	Wedge	152-335	Yoke Adjustment, 3 Used (Not furnished with Yoke.)

(1) Used in Models: J2040W, SJ2063S5, SJ2063W5, SJ2063X5, SJ5263Y, SJ7263BG, SJ7263W, SS2045W, SS5045Y, SS6045W.

(2) Used in Models: S1930W1, SJ5935Y, SJ7935W, SJ9935S, SS1935W.

(3) Contact PTS Electronics Corporation for replacement; order by manufacturer's part number.

(4) Used in A-16853 Keyboard.

(5) Not used in Models: J2040W, S1930W1.

(6) Used with Models: SS2045W, SS5045Y, SS6045W, SS1935W.

(7) Used with Models: SJ2063S5, SJ2063W5, SJ2063X5, SJ5263Y, SJ7263BG, SJ7263W.

(8) Used with Models: SJ7935W, SJ9935S, SJ5935Y.

ZENITH

MODEL SS2045W

TUNER 175 - 2303 - 02 PARTS LIST

NOTES

ZENITH

MODEL SS2045W

SEMICONDUCTORS

(Select replacement for best results.)

Item No.	Type No.	Mfr. Part No.
CR1, 2, 3	-	103-393
CR4, 5	-	103-387B
CR6 - 9	-	103-393
CR10	-	103-387B
CR11	-	103-393
CR12	-	103-387B
CR13, 14	-	103-393
CR101 - 4	-	103-387B
CR105	-	103-443
CR106	-	103-387B
IC1	-	221-482
IC2	-	221-569
Q1	-	121-1216-01
Q101	-	121-1162-01A
Q102	-	121-1139A

CAPACITORS

Item	Rating	Mfr. Part No.
C91	.001 50V Feedthru	22-7894-04
C92	.001 50V Feedthru	22-7894-04
C93	.001 50V Feedthru	22-7894-04
C94	.001 50V Feedthru	22-7894-04
C95	.001 50V Feedthru	22-7894-04
C96	.001 50V Feedthru	22-7894-04
C97	82 50V 10% Feedthru	22-7993-03
C98	.001 50V Feedthru	22-7894-04

MISCELLANEOUS

Item No.	Description	Mfr. Part No.	Notes
J1	Jack	78-3401	75 Ohm Antenna Input
J2	Jack	78-3400-03	Prescaler Output
L29	Ferrite Bead	149-575	
L32	Ferrite Bead	149-418	
L120	Ferrite Bead	149-418	
	Tuner (1)	175-2303-02	UHF/VHF

(1) Contact PTS Electronics Corporation for replacement; order by manufacturer's part number.

COILS (RF-IF)

Item No.	Rating	Mfr. Part No.
L2	-	20-4329-01
L3	-	20-4329-02
L4	-	20-4329-03
L5	-	20-4329-04
L6	-	20-4329-05
L7	-	20-4329
L8	-	20-4327
L9	-	20-4329-08
L10	-	20-4329-09
L12	-	20-4328-19
L13	-	20-4329-14
	-	20-4329-18
L14	-	20-4168-01
L15	-	20-4329
L16	-	20-4329-13
	-	20-4329-22
L17	-	20-4329-19
	-	20-4329-23
L18	-	20-4329-20
L19	-	20-4326
L20	1mH	20-4129-08
L21	-	20-4329
L22	-	20-4329-20
L23	-	20-4329-16
L24	10mH	20-4129-20
L25	-	20-4329-21
L26	3.3mH	20-4129-14
L28	-	149-418
L30	-	20-4328-03
L31	.22mH	20-4129
L34	1mH	20-4129-08
L100	-	20-4325
L101	-	20-4338-18
L102	-	20-4315
L103	-	20-4327-02
L104	-	20-4327-03
L105	-	20-4327-06
L106	-	20-4328-14
L107	-	20-4328-22
L108	-	20-4328-07
	-	20-4328-23
L109	-	20-4328-08
L110	-	20-4329-17
L111	-	20-4328-09
L112	-	20-4328-15
	-	20-4328-21
L113	-	20-4328-11
L114	-	20-4328-12
L116	-	20-4328-13
L117	-	20-4328-14
	-	205-503
L118	.56mH	20-4129-05
	.22mH	20-04129

PARTS LIST continued

RESISTORS

Item No.	Rating	Mfr. Part No.	NTE Replacement
R2605	15K 1% 1/4W Film	63-11095-17	-
R2601	10K 2% 1W Film	63-10830-96B	1W130
R5100	100 1% 1/4W Film	63-11093	-
R5101	100 1% 1/4W Film	63-11093	-
R5102	100 1% 1/4W Film	63-11093	-
R5106	1210 1% 1/4W Film	63-11094-08	-
R5107	1210 1% 1/4W Film	63-11094-08	-
R5108	1210 1% 1/4W Film	63-11094-08	-
R5109	120K 2% 1/2W Film	63-10242-22	HW412
R5110	120K 2% 1/2W Film	63-10242-22	HW412
R5111	120K 2% 1/2W Film	63-10242-22	HW412
R5112	120K 2% 1/2W Film	63-10242-22	HW412
R5113	120K 2% 1/2W Film	63-10242-22	HW412
R5114	120K 2% 1/2W Film	63-10242-22	HW412
R5119	150K 1% 1/4W Film	63-11096-17	-
R5120	100 1% 1/4W Film	63-11093	-
R5121	75 1% 1/4W Film	63-11092-09	-
R5122	100 1% 1/4W Film	63-10934	-
R5124	332 1% 1/4W Film	63-11093-50	-
R5126	681 1% 1/4W Film	63-11093-80	-
R5137	100K 1% 1/4W Film	63-11096	-
R5138	100K 1% 1/4W Film	63-11096	-
R5139	100K 1% 1/4W Film	63-11096	-
R5505	4750 1% 1/4W Film	63-11094-65	-
R5506	6810 1% 1/4W	63-11094-80	-
# RX2110	4.7 5% 1/2W Film	63-11110-16	HW4D7
# RX2115	1.2 5% 1/2W Film	63-10565-02	HW1D2
# RX2602	100 5% 1/2W Film	63-11152-48	HW110
# RX3008	1800 5% 1/4W Film	63-11020-79	QW218
# RX3013	22K 5% 1/4W Film	63-10236-04	QW322
# RX3015	22K 5% 1/4W Film	63-10236-04	QW322
# RX3016	1820 1% 1/2W Film	63-11081-25	-
# RX3022	1820 1% 1/2W Film	63-11081-25	-
# RX3035	1820 1% 1/2W Film	63-11081-25	-
# RX3228	.1 5% 1/2W Film	63-10829-25A	HWD10
# RX3237	1.8 5% 2W Wirewound	63-10420-30	2W1D8
# RX3242	2.7 5% 1/2W Film	63-10565-10	HW2D7
# RX3261	10 10% 10W Wirewound	63-10460-48A	10W010
# RX3263	750 5% 1W Film	63-10832-69B	1W175
# RX3264	750 5% 1W Film	63-10832-69B	1W175
# RX3277	2.7 5% 1/2W Film	63-11110-10	HW2D7
# RX3400	5.6M 20% 1/2W Carbon	63-10657-06	HW556
# RX3415	14.5 (Cold) PTC	63-10710A	-
# RX3416	4.7 5% 1/2W Film	63-11110-16	HW4D7
# RX3430	15K 5% 2W Film	63-10837B	2W315

For SAFETY use only equivalent replacement part.

RESISTORS continued

Item No.	Rating	Mfr. Part No.	NTE Replacement
# RX3431	.18 10% 2W Wirewound	63-10422-06	2WD18
# RX3433	15 5% 1/2W Film	63-11-87-28	HW015
# RX3434	43 5% 1W Film	63-10832-39B	1W043
# RX3435	10 5% 1W Film	63-10832-24B	1W010
# RX3438	1 5% 1/2W Film	63-10565	HW1D0
# RX6400	22 5% 3W Film	63-10840-32B	3W022

For SAFETY use only equivalent replacement part.

CONTROLS

(All wattages 1/2 watt or less, unless otherwise listed.)

Item No.	Function	Resistance	Mfr. Part No.
R1203	AGC	100K	63-10857-17
R2112	Vertical Size	47K	63-10854-08
R5103	Blue Drive	500	63-11090-21
R5104	Red Drive	500	63-11090-21
R5105	Green Drive	500	63-11090-21

COILS (RF-IF)

Item No.	Rating	Mfr. Part No.
L1200	22μH	20-4129-24
L1201	.27μH	20-4129-01
L1202	-	20-4127-12A
L1203	-	20-4127-12A
L1204	12μH	20-3907-13A
L1205	15μH	20-3907-14A
L2201	10μH	20-3907-12A
L3275	100μH	20-3907-24A
L3432	-	20-4321
L5100	330μH	20-3907-30A
L5101	18μH	20-3907-15A
L6003	1μH	20-3907A
# LX3201	Width Control	20-3968-03
# LX3262	Linearity	20-4142-01

For SAFETY use only equivalent replacement part.

PARTS LIST continued

CABINET PARTS	
MODEL J2040W	
Item	Part No.
Cabinet Front	14-11824-33
Cabinet Rear	14-12031
MODEL S1930W1	
Item	Part No.
Cabinet Front	14-12047
Cabinet Rear	14-12048
Cabinet Tray	14-11976-01
Pushbutton (Part of Keyboard)	46-10508
Pushbutton Pad (Part of Keyboard)	194-2227
Window	192-817-11
MODEL SJ2063S5	
Item	Part No.
Cabinet Front	14-11977-30
Cabinet Rear	14-11978
Cabinet Tray	14-11976-01
Pushbutton (Part of Keyboard)	46-10508
Pushbutton Pad (Part of Keyboard)	194-2227
Window	192-817-09
MODEL SJ2063W5	
Item	Part No.
Cabinet Front	14-11977-31
Cabinet Rear	14-11978
Cabinet Tray	14-11976-01
Pushbutton (Part of Keyboard)	46-10508
Pushbutton Pad (Part of Keyboard)	194-2227
Window	192-817-09

CABINET PARTS continued	
MODEL SJ2063X5	
Item	Part No.
Cabinet Front	14-11977-32
Cabinet Rear	14-11978
Cabinet Tray	14-11976-01
Pushbutton (Part of Keyboard)	46-10508
Pushbutton Pad (Part of Keyboard)	194-2227
Window	192-817-09
MODEL SJ5263Y	
Item	Part No.
Cabinet Front	14-11977-34
Cabinet Rear	14-11978
Cabinet Tray	14-11976
Pushbutton (Part of Keyboard)	46-10508
Pushbutton Pad (Part of Keyboard)	194-2227
Window	192-817-09
MODEL SJ5935Y	
Item	Part No.
Cabinet Front	14-12047-05
Cabinet Rear	14-12048
Cabinet Tray	14-11976-01
Pushbutton (Part of Keyboard)	46-10508
Pushbutton Pad (Part of Keyboard)	194-2227
Window	192-817-09
MODEL SJ7263BG	
Item	Part No.
Cabinet Front	14-11977-33
Cabinet Rear	14-11978
Cabinet Tray	14-11976-01
Pushbutton (Part of Keyboard)	46-10508
Pushbutton Pad (Part of Keyboard)	194-2227
Window	192-817-09

CABINET PARTS continued	
MODEL SJ7263W	
Item	Part No.
Cabinet Front	14-11977-35
Cabinet Rear	14-11978
Cabinet Tray	14-11976-01
Pushbutton (Part of Keyboard)	46-10508
Pushbutton Pad (Part of Keyboard)	194-2227
Window	192-817-09
MODEL SJ7935W	
Item	Part No.
Cabinet Front	14-12047-04
Cabinet Rear	14-12048
Cabinet Tray	14-11976-01
Pushbutton (Part of Keyboard)	46-10508
Pushbutton Pad (Part of Keyboard)	194-2227
Window	192-817-09
MODEL SJ9935S	
Item	Part No.
Cabinet Front	14-12047-06
Cabinet Rear	14-12048
Cabinet Tray	14-11976-01
Pushbutton (Part of Keyboard)	46-10508
Pushbutton Pad (Part of Keyboard)	194-2227
Window	192-817-09
MODEL SS1935W	
Item	Part No.
Cabinet Front	14-12047-01
Cabinet Rear	14-12048
Cabinet Tray	14-11976-01
Pushbutton (Part of Keyboard)	46-10508
Pushbutton Pad (Part of Keyboard)	194-2227
Window	192-817-09

CABINET PARTS continued	
MODEL SS2045W	
Item	Part No.
Cabinet Front	14-11824-31
Cabinet Rear	14-12031
Pushbutton (Part of Keyboard)	46-10508
Pushbutton Pad (Part of Keyboard)	194-2227
Window	192-836-04
MODEL SS5045Y	
Item	Part No.
Cabinet Front	14-11824-35
Cabinet Rear	14-12031
Pushbutton (Part of Keyboard)	46-10508
Window	192-836-04
MODEL SS6045W	
Item	Part No.
Cabinet Front	14-11824-34
Cabinet Rear	14-12031
Pushbutton (Part of Keyboard)	46-10508
Window	192-836-04



Created with pride by the
employees of Howard W. Sams
& Company.

J. Barker, B. Buchanan,
T. Clensy, D. Cobb, R. Raus,
S. Scott, K. Smith,
D. Stitt, D. Urick