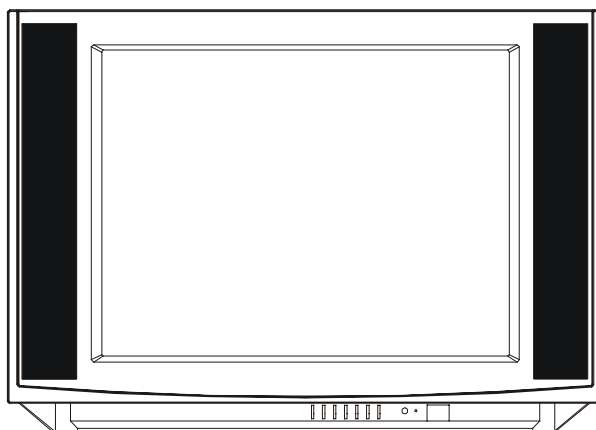


# SANYO

## SERVICE MANUAL

---



**C21TF26S**

---

|                                       |           |
|---------------------------------------|-----------|
| <b>1. Caution.....</b>                | <b>2</b>  |
| <b>2. Specification.....</b>          | <b>6</b>  |
| <b>3. BOM List .....</b>              | <b>9</b>  |
| <b>4. Alignment Procedure.....</b>    | <b>35</b> |
| <b>5. Block Diagram.....</b>          | <b>44</b> |
| <b>6. Schematic Diagram.....</b>      | <b>45</b> |
| <b>7. PCB Layout.....</b>             | <b>46</b> |
| <b>8. Exploded View Diagram .....</b> | <b>48</b> |

---

This manual is the latest at the time of printing, and does not include the modification which may be made after the printing, by the constant improvement of product.

**CAUTION:**

Use of controls, adjustments or procedures other than those specified herein may result in hazardous radiation exposure.

---



**CAUTION**  
**RISK OF ELECTRIC  
SHOCK DO NOT OPEN.**



CAUTION: TO REDUCE THE RISK OF ELECTRICAL SHOCK, DO NOT REMOVE COVER (OR BACK). NO USER SERVICEABLE PARTS INSIDE. REFER SERVICING TO QUALIFIED SERVICE PERSONNEL.

---



The lighting flash with arrowhead symbol, with an equilateral triangle is intended to alert the user to the presence of uninsulated "dangerous voltage" within the product's enclosure that may be of sufficient magnitude to constitute a risk of electric shock to the person.

---



The exclamation point within an equilateral triangle is intended to alert the user to the presence of important operating and maintenance (servicing) instructions in the literature accompanying the appliance.

---

**WARNING: TO REDUCE RISK OF FIRE OR ELECTRIC SHOCK, DO NOT  
EXPOSE THIS APPLIANCE TO RAIN OR MOISTURE.**

# **IMPORTANT SAFETY INSTRUCTIONS**

## **CAUTION:**

**Read all of these instructions. Save these instructions for later use. Follow all Warnings and Instructions marked on the audio equipment.**

1. Read Instructions- All the safety and operating instructions should be read before the product is operated.
2. Retain Instructions- The safety and operating instructions should be retained for future reference.
3. Heed Warnings- All warnings on the product and in the operating instructions should be adhered to.
4. Follow Instructions- All operating and use instructions should be followed.

## **FOR YOUR PERSONAL SAFETY**

1. When the power cord or plug is damaged or frayed, unplug this television set from the wall outlet and refer servicing to qualified service personnel.
2. Do not overload wall outlets and extension cords as this can result in fire or electric shock.
3. Do not allow anything to rest on or roll over the power cord, and do not place the TV where power cord is subject to traffic or abuse. This may result in a shock or fire hazard.
4. Do not attempt to service this television set yourself as opening or removing covers may expose you to dangerous voltage or other hazards. Refer all servicing to qualified service personnel.
5. Never push objects of any kind into this television set through cabinet slots as they may touch dangerous voltage points or short out parts that could result in a fire or electric shock. Never spill liquid of any kind on the television set.
6. If the television set has been dropped or the cabinet has been damaged, unplug this television set from the wall outlet and refer servicing to qualified service personnel.
7. If liquid has been spilled into the television set, unplug this television set from the wall outlet and refer servicing to qualified service personnel.
8. Do not subject your television set to impact of any kind. Be particularly careful not to damage the picture tube surface.
9. Unplug this television set from the wall outlet before cleaning. Do not use liquid cleaners or aerosol cleaners. Use a damp cloth for cleaning.
- 10.1. Do not place this television set on an unstable cart, stand, or table. The television set may fall, causing serious injury to a child or an adult, and serious damage to the appliance. Use only with a cart or stand recommended by the manufacturer, or sold with the television set. Wall or shelf mounting should follow the manufacturer's instructions, and should use a mounting kit approved by the manufacturer.
- 10.2. An appliance and cart combination should be moved with care. Quick stops, excessive force, and uneven surfaces may cause the appliance and cart combination to overturn.



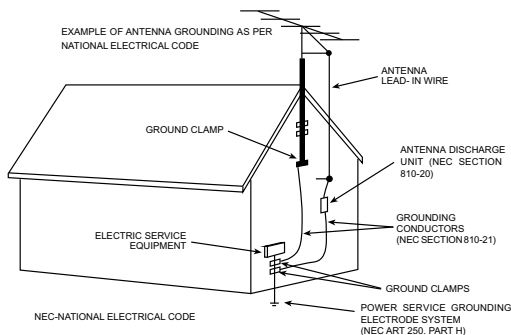
## **PROTECTION AND LOCATION OF YOUR SET**

11.
  - Do not use this television set near water ... for example, near a bathtub, washbowl, kitchen sink, or laundry tub, in a wet basement, or near a swimming pool, etc.
  - Never expose the set to rain or water. If the set has been exposed to rain or water, unplug the set from the wall outlet and refer servicing to qualified service personnel.
12. Choose a place where light (artificial or sunlight) does not shine directly on the screen.
13. Avoid dusty places, since piling up of dust inside TV chassis may cause failure of the set when high humidity persists.
14. The set has slots, or openings in the cabinet for ventilation purposes, to provide reliable operation of the receiver, to protect it from overheating. These openings must not be blocked or covered.
  - Never cover the slots or openings with cloth or other material.
  - Never block the bottom ventilation slots of the set by placing it on a bed, sofa, rug, etc.
  - Never place the set near or over a radiator or heat register.
  - Never place the set in a "built-in" enclosure, unless proper ventilation is provided.

## **PROTECTION AND LOCATION OF YOUR SET**

- 15.1. If an outside antenna is connected to the television set, be sure the antenna system is grounded so as to provide some protection against voltage surges and built up static charges, Section 810 of the National Electrical Code, NFPA No. 70-1975, provides information with respect to proper grounding of the mast and supporting structure, grounding of the lead-in wire to an antenna discharge unit, size of grounding conductors, location of antenna discharge unit, connection to grounding electrode, and requirements for the grounding electrode.

### **EXAMPLE OF ANTENNA GROUNDING AS PER NATIONAL ELECTRICAL CODE INSTRUCTIONS**



- 15.2. Note to CATV system installer : (Only for the television set with CATV reception)

This reminder is provided to call the CATV system installer's attention to Article 820-40 of the NEC that provides guidelines for proper grounding and, in particular, specifies that the cable ground shall be connected to the grounding system of the building, as close to the point of cable entry as practical.

16. An outside antenna system should not be located in the vicinity of overhead power lines or other electric lights or power circuits, or where it can fall into such power lines or circuits. When installing an outside antenna system, extreme care should be taken to keep from touching such power lines or circuits as contact with them might be fatal.
17. For added protection for this television set during a lightning storm, or when it is left unattended and unused for long periods of time, unplug it from the wall outlet and disconnect the antenna. This will prevent damage due to lightning and power-line surges.

## **OPERATION OF YOUR SET**

18. This television set should be operated only from the type of power source indicated on the marking label. If you are not sure of the type of power supply at your home, consult your television dealer or local power company. For television sets designed to operate from battery power, refer to the operating instructions.
19. If the television set does not operate normally by following the operating instructions, unplug this television set from the wall outlet and refer servicing to qualified service personnel. Adjust only those controls that are covered in the operating instructions as improper adjustment of other controls may result in damage and will often require extensive work by a qualified technician to restore the television set to normal operation.
20. When going on a holiday : If your television set is to remain unused for a period of time, for instance, when you go on a holiday, turn the television set " off " and unplug the television set from the wall outlet.

## **IF THE SET DOES NOT OPERATE PROPERLY**

21. If you are unable to restore normal operation by following the detailed procedure in your operating instructions, do not attempt any further adjustment. Unplug the set and call your dealer or service technician.
22. Whenever the television set is damaged or fails, or a distinct change in performance indicates a need for service, unplug the set and have it checked by a professional service technician.
23. It is normal for some TV sets to make occasional snapping or popping sounds, particularly when being turned on or off. If the snapping or popping is continuous or frequent, unplug the set and consult your dealer or service technician.

## **FOR SERVICE AND MODIFICATION**

24. Do not use attachments not recommended by the television set manufacturer as they may cause hazards.
25. When replacement parts are required, be sure the service technician has used replacement parts specified by the manufacturer that have the same characteristics as the original part. Unauthorized substitutions may result in fire, electric shock, or other hazards.
26. Upon completion of any service or repairs to the television set, ask the service technician to perform routine safety checks to determine that the television is in safe operating condition.

|   |   |
|---|---|
| PFS2 FORMAT-1 Report  |   |
| <b>Date:2004-5-19 13:55</b><br><b>ProductView.....:</b><br><b>Report by.....:</b> | Product:<br>C21TF26S  |
| <b>Specs / Products</b>   |   |
| <b>MasterData</b>   |   |
| Customer Id   | newsan  |
| Version   | 1   |
| Status  |   |
| Locked  |   |
| 12NC  |   |
| Brand   |   |
| EAN   | \   |
| UPC   | \   |
| <b>Reception</b>  |   |
| +Tuning - presets/channels  | 181, Full-Cable   |
| +Tuning - technology  | PLL   |
| +Tuning - Indication  | Full-Cable  |
| +Freq Bands   | FS TUNER  |
| +Channels   |   |
| +IF Freq  | 45.75M  |
| +TV Systems Off Air/Cable   | NTSC-M, PAL MN  |
| +Add Systems Ext In   | 4.43 NTSC, 4.43PAL  |
| +TV Systems Multi   | PAL NTSC  |
| +Sound Systems  | AV STEREO,BTSC  |
| <b>Picture - Processing</b>   |   |
| +Scan   | Standard  |
| +Scan Modes   | 4:03  |
| +Wide Screen Switching  |   |
| +Combfilter   |   |
| +Picture Control  | Brightness, Color, Contrast, Tint, Sharpness<br>Con Var, Smart pict 4 modes     |
| +Pict Enhancement   | Blue Mute   |
| +Pict Noise Reduction   | Yes   |
| <b>Picture - Display</b>  |   |
| +Display Type   |   |
| +Screen Format  |   |
| +Size(Visual)" - size/vis. cm   | 21"   |
| +Deflection System (CRT only)   |   |
| +Tube Technology (CRT only)   |   |
| +CRT Defl   |   |
| +CRT Gun  |   |
| +CRT Magn field   |   |
| +Resolution   |   |
| +Coating (only for D.V. sets)   |   |
| +White Point  |   |
| <b>Sound</b>  |   |
| +Leaflet Power  | 8W  |
| +RMS Power Intern   | 2X4W(for 21")   |
| +RMS Power Extern   |   |
| +Surround Sound   | YES   |
| +Sound Features   | Mute, Smart sound(4 modes)  |
|   |   |
| +Sound Control  | Balance, Bass, Treble, Volume   |
| <b>Sound - Speakers</b>   |   |
| +Speaker configuration  | 2 speakers  |
| +Speakers used  |   |
| +Speaker Size   |   |
| <b>User Interface</b>   |   |
| +Interface Name   | 2188  |
| +Voice Control  |   |
| +Menu   | Cursor Control  |
| +Menu Colours   |   |
| +Menu Languages   | Spanish, English, Franch, Portuguese  |
| +Special Features   | V-chip with Child Lock, CCD, Favorite<br>channel, Notebook, Biological,Calendar |
| +Operational Features   | Alternate Channel/ recall   |
|   |   |
| +PP Features  | one PP for all channel  |

|  |   |
|--|---|
| <b>Date:2004-5-19 13:55</b>                        | <b>Product:</b><br>C21TF26S   |
| <b>ProductView.....:</b><br><b>Report by.....:</b> |   |
| <b>Specs / Products</b>                            |   |
| +Tuning/Install Features                           | Auto Cable/ Auto select. Auto channel Prog, Cable/Antenna select, Channnel Edit, Factory Mode, Language Selection, Service Mode |
| +Clock/Timer Functions                             | sleep timer   |
| +Local Controls Front                              | Channel +/-, Volume+/-, Mains(Tact Switch), Menu, TV/Video  |
| +Local Controls Top                                |   |
| +Indicators - screen                               |   |
| +Indicators - front                                |   |
| +Numb of Loc Cont (incl Mains)                     |   |
| +Number of Ind. (incl Mains)                       |   |
| +Local Controls (Old)                              |   |
| <b>Remote Control</b>                              |   |
| +Remote Control - scope                            | TV  |
| +Remote Control - type                             | Standard  |
| +Remote Control - typenr                           | F   |
| +Remote Control - features                         |   |
| <b>Connectors Rear</b>                             |   |
| +Scart RGB+Y/C+CVBS                                |   |
| +Scart RGB+CVBS                                    |   |
| +Scart CVBS+Y/C                                    |   |
| +Component In (Y/U/V) Cinch                        |   |
| +In Y/C+Cinch(CVBS+St)                             | x   |
| +In Y/C+Cinch(CVBS+Mo)                             |   |
| +In Y/C+Cinch(St)                                  |   |
| +In BNC (CVBS)                                     |   |
| +In Cinch(CVBS+St)                                 |   |
| +In Cinch(CVBS+Mo)                                 |   |
| +Out Cinch(CVBS+St)                                | x   |
| +Out Cinch(CVBS+Mo)                                |   |
| +Out Cinch Audio Stereo                            |   |
| +Out Cinch Audio Mono                              |   |
| +Out Cinch Dolby Surround                          |   |
| +Dig Audio Out                                     |   |
| +Loudspeakers                                      |   |
| +Control Busses                                    |   |
| +Feature Slot                                      |   |
| +ITV Smart Port                                    |   |
| +Terr. Antenna in                                  | 75 Ohms(F type)   |
| Guide + IR Blaster Jack                            |   |
| <b>Connectors Front</b>                            |   |
| +In Cinch (CVBS + St)                              |   |
| +In Cinch (CVBS+Mo)                                |   |
| +Headphone Out                                     |   |
|  |   |
| <b>Connectors Side</b>                             |   |
| +In Y/C + Cinch(CVBS+St)                           |   |
| +In Y/C + Cinch Stereo                             |   |
| +In Cinch (CVBS + St)                              | x   |
| +IN Cinch (CVBS + Mo)                              |   |
| +Headphone Out                                     |   |
| <b>Connectors Top</b>                              |   |
| <b>Connectors Mechanical</b>                       |   |
| <b>Styling</b>                                     |   |
| +Cabinet Name                                      | 2188  |
| +Configuration                                     |   |
| +Graphics/Logo's                                   | RCA   |
| +Cabinet Colour and Finish                         |   |
| +Mechanics   |   |
| +Speaker Visibility                                |   |
| <b>General</b>                                     |   |
| +Segment   |   |
| +Chassis   | M123A   |
| +Software Delivery Mode                            |   |
| +Software Version                                  | 13-A21V01-TOP   |
| +Mains Voltage                                     | 110-240V  |
| +Mains Frequency                                   | 50 / 60 Hz  |
| +Type Mains Cord                                   | ARGENTINA   |

|                                |                             |
|--------------------------------|-----------------------------|
| <b>Date:2004-5-19 13:55</b>    | <b>Product:</b><br>C21TF26S |
| <b>ProductView.....:</b>       |                             |
| <b>Report by.....:</b>         |                             |
| <b>Specs / Products</b>        |                             |
| Power Consumption (P)TV in On  |                             |
| Power Consumption SB in Watts  | less than 3W                |
| Power Consumption Semi SB in W |                             |
| +Power in "ON" for             |                             |
| +Power in Standby for          |                             |
| +Power in "OFF" for            |                             |
| Weight (P)TV (incl. Packaging) |                             |
| Weight (P)TV (excl. Package)   |                             |
| Weight AVUnit excl Packaging   |                             |
| +INDICATION on BACKCOVER       |                             |
| +Channel                       |                             |
| <b>Final Equipment</b>         |                             |
| +Packaging - methods           |                             |
| +Documents and manuals         |                             |
| +Languages DFU                 |                             |
| +Cables Supplied               |                             |
| +Antenna Supplied              |                             |
| +Stand Supplied                |                             |
| +Aux Equipm Supplied           |                             |
| Packaging - width cm           |                             |
| Packaging - height cm          |                             |
| Packaging - depth cm           |                             |
| <b>Miscellaneous</b>           |                             |
| +EAN Indication                |                             |
| +Approbation                   | CB                          |
| +Tests                         |                             |
| +Local Integration             |                             |
| <b>Various Perf. Param.</b>    |                             |
| +Service Call-Rate             |                             |
| <b>PIP/POP</b>                 |                             |
| +Type                          |                             |
| +Features                      |                             |
| <b>Digital Reception</b>       |                             |
| +Transmission                  |                             |
| <b>Built-in Data System</b>    |                             |
| +Text Standard                 |                             |
| +(Tele)text Features           |                             |
| +Nbr bckgrnd page / Mem Size   |                             |
| +Text Technology               |                             |
| +Digital Data handling         |                             |
| +Program Guide                 |                             |
| <b>Built-in Clock/Timer</b>    |                             |
| +Type                          |                             |
| +Features                      |                             |
| <b>Built-in Radio</b>          |                             |
| +Type                          |                             |
| <b>Built-in PC display</b>     |                             |
| +PC Synch                      |                             |
| +PC Control                    |                             |
| <b>Built-in DVD drive</b>      |                             |
| +Type of Medium                |                             |
| +Type of Deck                  |                             |
| <b>Phased Out Items</b>        |                             |
| +Tuner/Frontend                |                             |
| +Sensitivity                   |                             |
| +CRT EHT                       |                             |
| +Lightning Protection          |                             |
| +Account                       |                             |
| +XX(Radio Antenna in)          |                             |
| +Non Volatile Memory           |                             |
| +In Y/C + Cinch(CVBS+Mo)       |                             |
| Version of deck                |                             |
|                                |                             |



| Item No.        | Description                   | Quantity Req. | Designator | Remarks                       |
|-----------------|-------------------------------|---------------|------------|-------------------------------|
| 08-002180-FRY   | ASS'Y - PACKING FOR F/R CAB.  | 1             |            |                               |
| 74-075045-50D   | POLYBAG (75CMX45CMX0.5MM)     | 1             |            |                               |
| 74-100100-8CD   | POLYBAG (100CMX100CM)         | 2             |            |                               |
| 74-345900-50C   | EPE BOARD (600MMX400MMX5MM)   | 0.93          |            |                               |
| 74-345910-50C   | EPE BOARD (300MMX240MMX5MM)   | 1.333         |            |                               |
| 74-360350-50C   | EPE BOARD (620mmX500mmX5mm)   | 0.25          |            |                               |
| 76-001497-0AF   | CARTON BOX LWH 640X460X360MM  | 0.028         |            |                               |
| 76-002139-0AR   | CARTON BOX LWH 672X642X494MM  | 0.333         |            |                               |
| 76-002180-0AF   | CARTON BOX LWH 642X500X445MM  | 0.07          |            |                               |
| 76-002180-0AP   | CARTON BOX LWH 642X530X510MM  | 0.25          |            |                               |
| 76-346740-01A   | CARTON SHEET LWH 440X620X3MM  | 0.142         |            |                               |
| 77-075045-6WC   | BUBBLE BAG (75cmX45cm)        | 1             |            |                               |
| 77-100100-6WC   | BUBBLE BAG (100cmX100cm)      | 0.5           |            |                               |
| 08-02180G-SIY   | ASS'Y - SIDE AV BD            | 1             |            |                               |
| 47-RCA020-XX1   | RCA SOCKET Y/W/R              | 1             | P1101      |                               |
| 46-31789H-02X   | HS 2P22 400 MM TJC3-2Y/SCN-2Y | 1             |            | P1102A V - GND FOR M. BD P904 |
| 40-2180MH-SIA1X | P. C. B. SIDE AV BD           | 1             |            |                               |
| 46-32274H-03X   | HS 3P24 380 TJC3-3Y/SCN-3Y    | 1             |            | L - R FOR MPX BD P1003        |
| 08-02188G-CRY   |                               | 1             |            |                               |
| 10-1N4148-ABX   | DIODE 1N4148 (SWITCHING)      | 1             | D502       |                               |
| 10-1N4148-ABX   | DIODE 1N4148 (SWITCHING)      | 1             | D501       |                               |
| 11-SA1015-YBX   | TRANSISTOR 2SA1015Y           | 1             | Q510       |                               |
| 11-SC2482-OBX   | TRANSISTOR 2SC2482            | 1             | Q501       |                               |
| 11-SC2482-OBX   | TRANSISTOR 2SC2482            | 1             | Q502       |                               |
| 11-SC2482-OBX   | TRANSISTOR 2SC2482            | 1             | Q503       |                               |
| 18-CB0101-JNX   | RES. C.F. 100 OHM 1/6W +/-5%  | 1             | R501       |                               |
| 18-CB0101-JNX   | RES. C.F. 100 OHM 1/6W +/-5%  | 1             | R504       |                               |
| 18-CB0101-JNX   | RES. C.F. 100 OHM 1/6W +/-5%  | 1             | R507       |                               |
| 18-CB0102-JNX   | RES. C.F. 1K OHM 1/6W +/-5%   | 1             | R522       |                               |
| 18-CB0222-JNX   | RES. C.F. 2.2k OHM 1/6W +/-5% | 1             | R524       |                               |
| 18-CB0471-JNX   | RES. C.F. 470 OHM 1/6W +/-5%  | 1             | R525       |                               |

| Item No.      | Description                    | Quantity Req. | Designator | Remarks                |
|---------------|--------------------------------|---------------|------------|------------------------|
| 18-CB0471-JNX | RES. C.F. 470 OHM 1/6W +/-5%   | 1             | R526       |                        |
| 18-CB0471-JNX | RES. C.F. 470 OHM 1/6W +/-5%   | 1             | R527       |                        |
| 18-CB0472-JNX | RES. C.F. 4.7k OHM 1/6W +/-5%  | 1             | R502       |                        |
| 18-CB0472-JNX | RES. C.F. 4.7k OHM 1/6W +/-5%  | 1             | R505       |                        |
| 18-CB0472-JNX | RES. C.F. 4.7k OHM 1/6W +/-5%  | 1             | R508       |                        |
| 18-CB0681-JNX | RES. C.F. 680 OHM 1/6W +/-5%   | 1             | R523       |                        |
| 18-CB0751-JNX | RES. C.F. 750 OHM 1/6W +/-5%   | 1             | R503       |                        |
| 18-CB0751-JNX | RES. C.F. 750 OHM 1/6W +/-5%   | 1             | R506       |                        |
| 18-CB0751-JNX | RES. C.F. 750 OHM 1/6W +/-5%   | 1             | R509       |                        |
| 18-CD0104-JNX | RES. C.F. 100K OHM 1/4W +/-5%  | 1             | R521       |                        |
| 18-FE0272-JNX | RES. M.O. 2.7K OHM 1/2W +/-5%  | 1             | R514       |                        |
| 18-FE0272-JNX | RES. M.O. 2.7K OHM 1/2W +/-5%  | 1             | R515       |                        |
| 18-FE0272-JNX | RES. M.O. 2.7K OHM 1/2W +/-5%  | 1             | R518       |                        |
| 18-FG0183-JHX | RES. M.O. 18K OHM 2W +/-5%     | 1             | R510       |                        |
| 18-FG0183-JHX | RES. M.O. 18K OHM 2W +/-5%     | 1             | R511       |                        |
| 18-FG0183-JHX | RES. M.O. 18K OHM 2W +/-5%     | 1             | R512       |                        |
| 25-BCB221-M1X | CAP. ELEC 220 UF 16V +/-20%    | 1             | C508       |                        |
| 26-A1M103-KBX | CAP. CER 0.01UF 500V +/-10% B  | 1             | C504       |                        |
| 26-AMK221-KBX | CAP. CER 220PF 2KV +/-10% B    | 1             | C505       |                        |
| 26-EBP103-ZFX | CAP. CER 0.01UF 50V +80/-20% F | 1             | C514       |                        |
| 26-EBP103-ZFX | CAP. CER 0.01UF 50V +80/-20% F | 1             | C507       |                        |
| 26-EBP681-JCX | CAP. CER 680 pF 50V +/-5%      | 1             | C501       |                        |
| 26-EBP681-JCX | CAP. CER 680 pF 50V +/-5%      | 1             | C502       |                        |
| 26-EBP681-JCX | CAP. CER 680 pF 50V +/-5%      | 1             | C503       |                        |
| 35-139730-00X | FERR. BEAD BF60                | 2             |            | FOR C514 (L505 & L506) |
| 40-02135S-CRD | P.C.B. CRT BD                  | 1             |            |                        |
| 41-WJ0050-B00 | WIRE BARE JUMPER 5MM           | 1             |            | FOR Q505 (B - E)       |
| 41-WJ0050-B00 | WIRE BARE JUMPER 5MM           | 1             |            | FOR Q509 (B - E)       |
| 41-WJ0050-B00 | WIRE BARE JUMPER 5MM           | 1             |            | FOR Q507 (B - E)       |
| 41-WJ0060-B00 | WIRE BARE JUMPER 6mm           | 1             | J505       |                        |
| 41-WJ0075-B00 | WIRE BARE JUMPER 7.5MM         | 1             | J502       |                        |

| Item No.      | Description                   | Quantity Req. | Designator | Remarks                    |
|---------------|-------------------------------|---------------|------------|----------------------------|
| 41-WJ0075-B00 | WIRE BARE JUMPER 7.5MM        | 1             | J503       |                            |
| 41-WJ0100-B00 | WIRE BARE JUMPER 10MM         | 1             | J501       |                            |
| 41-WJ0100-B00 | WIRE BARE JUMPER 10MM         | 1             | J504       |                            |
| 46-10967W-01X | PIN BASE *1 TJC1-1A           | 1             | P503       |                            |
| 46-28816H-05X | HS 5P24 500 TJC3-5Y/SCN-5Y    | 1             |            | P501 P2 -P6 FOR M. BD P201 |
| 46-30615H-04X | HS 4P24 460 F/W TJC3-4Y/SCN-4 | 1             |            | P502 FOR M. BD P402        |
| 47-CRT004-XX0 | CRT SOCKET GZS10-2-AC2        | 1             | S501       |                            |
| 08-OA21SG-MAY |                               | 1             |            |                            |
| 10-0FR104-FBX | DIODE FR104 (FAST RECTIFIER)  | 1             | D402       |                            |
| 10-0FR104-FBX | DIODE FR104 (FAST RECTIFIER)  | 1             | D401       |                            |
| 10-0FR104-FBX | DIODE FR104 (FAST RECTIFIER)  | 1             | D403       |                            |
| 10-1N4001-EBX | DIODE 1N4001 (RECTIFIER)      | 1             | D301       |                            |
| 10-1N4002-EBX | DIODE 1N4002 (RECTIFIER)      | 1             | D405       |                            |
| 10-1N4148-ABX | DIODE 1N4148 (SWITCHING)      | 1             | D005       |                            |
| 10-1N4148-ABX | DIODE 1N4148 (SWITCHING)      | 1             | D206       |                            |
| 10-1N4148-ABX | DIODE 1N4148 (SWITCHING)      | 1             | D006       |                            |
| 10-1N4148-ABX | DIODE 1N4148 (SWITCHING)      | 1             | D007       |                            |
| 10-1N4148-ABX | DIODE 1N4148 (SWITCHING)      | 1             | D601       |                            |
| 10-1N4148-ABX | DIODE 1N4148 (SWITCHING)      | 1             | D008       |                            |
| 10-1N4148-ABX | DIODE 1N4148 (SWITCHING)      | 1             | D602       |                            |
| 10-1N4148-ABX | DIODE 1N4148 (SWITCHING)      | 1             | D009       |                            |
| 10-1N4148-ABX | DIODE 1N4148 (SWITCHING)      | 1             | D307       |                            |
| 10-1N4148-ABX | DIODE 1N4148 (SWITCHING)      | 1             | D302       |                            |
| 10-1N4148-ABX | DIODE 1N4148 (SWITCHING)      | 1             | D303       |                            |
| 10-1N4148-ABX | DIODE 1N4148 (SWITCHING)      | 1             | D305       |                            |
| 10-CW574C-DJX | DIODE CW574CD                 | 1             | D101       |                            |
| 10-79C3V9-DBX | DIODE ZENER 3V9 1/2W 5%       | 1             | D304       |                            |
| 10-79C5V1-DBX | DIODE ZENER 5V1 1/2W 5%       | 1             | D001       |                            |
| 10-79C6V2-DBX | DIODE ZENER 6V2 1/2W 5%       | 1             | D404       |                            |
| 11-A124ES-OBX | TRANSISTOR PDTA124ES (PNP)    | 1             | Q005       |                            |
| 11-C124ES-OBX | TRANSISTOR PDTC124ES (NPN)    | 1             | Q604       |                            |

| Item No.      | Description                   | Quantity Req. | Designator | Remarks |
|---------------|-------------------------------|---------------|------------|---------|
| 11-C124ES-OBX | TRANSISTOR PDC124ES (NPN)     | 1             | Q001       |         |
| 11-C124ES-OBX | TRANSISTOR PDC124ES (NPN)     | 1             | Q004       |         |
| 11-C124ES-OBX | TRANSISTOR PDC124ES (NPN)     | 1             | Q212       |         |
| 11-C144ES-OBX | TRANSISTOR PDC144ES (NPN)     | 1             | Q211       |         |
| 11-DD1555-OAX | TRANSISTOR 3DD1555            | 1             | Q402       |         |
| 11-SA1015-YBX | TRANSISTOR 2SA1015Y           | 1             | Q003       |         |
| 11-SA1015-YBX | TRANSISTOR 2SA1015Y           | 1             | Q202       |         |
| 11-SA1015-YBX | TRANSISTOR 2SA1015Y           | 1             | Q605       |         |
| 11-SA1015-YBX | TRANSISTOR 2SA1015Y           | 1             | Q210       |         |
| 11-SC1815-YBX | TRANSISTOR 2SC1815Y           | 1             | Q203       |         |
| 11-SC1815-YBX | TRANSISTOR 2SC1815Y           | 1             | Q209       |         |
| 11-SC1815-YBX | TRANSISTOR 2SC1815Y           | 1             | Q002       |         |
| 11-SC1815-YBX | TRANSISTOR 2SC1815Y           | 1             | Q208       |         |
| 11-SC1815-YBX | TRANSISTOR 2SC1815Y           | 1             | Q905       |         |
| 11-SC2482-OBX | TRANSISTOR 2SC2482            | 1             | Q401       |         |
| 11-SC3779-DBX | TRANSISTOR 2SC3779D (RF AMPL) | 1             | Q101       |         |
| 13-00M24C-08P | IC EEPROM 8K M24C08 (WRITE)   | 1             | IC001      |         |
| 13-0STV93-02S | IC STV9302                    | 1             | IC301      |         |
| 13-L7809C-VAP | IC L7809CV                    | 1             | IC401      |         |
| 13-TDA705-7AS | IC TDA7057AQ (R/L AUDIO O/P)  | 1             | IC601      |         |
| 18-CB0100-JNX | RES. C.F. 10 OHM 1/6W +/-5%   | 1             | J217       |         |
| 18-CB0101-JNX | RES. C.F. 100 OHM 1/6W +/-5%  | 1             | R218       |         |
| 18-CB0101-JNX | RES. C.F. 100 OHM 1/6W +/-5%  | 1             | R009       |         |
| 18-CB0101-JNX | RES. C.F. 100 OHM 1/6W +/-5%  | 1             | R228       |         |
| 18-CB0102-JNX | RES. C.F. 1K OHM 1/6W +/-5%   | 1             | R415       |         |
| 18-CB0102-JNX | RES. C.F. 1K OHM 1/6W +/-5%   | 1             | R013       |         |
| 18-CB0102-JNX | RES. C.F. 1K OHM 1/6W +/-5%   | 1             | R234       |         |
| 18-CB0102-JNX | RES. C.F. 1K OHM 1/6W +/-5%   | 1             | R029       |         |
| 18-CB0102-JNX | RES. C.F. 1K OHM 1/6W +/-5%   | 1             | R116       |         |
| 18-CB0102-JNX | RES. C.F. 1K OHM 1/6W +/-5%   | 1             | R051       |         |
| 18-CB0102-JNX | RES. C.F. 1K OHM 1/6W +/-5%   | 1             | R901       |         |

| Item No.      | Description                   | Quantity Req. | Designator | Remarks |
|---------------|-------------------------------|---------------|------------|---------|
| 18-CB0102-JNX | RES. C.F. 1K OHM 1/6W +/-5%   | 1             | R922       |         |
| 18-CB0102-JNX | RES. C.F. 1K OHM 1/6W +/-5%   | 1             | R902       |         |
| 18-CB0102-JNX | RES. C.F. 1K OHM 1/6W +/-5%   | 1             | R920       |         |
| 18-CB0103-JNX | RES. C.F. 10K OHM 1/6W +/-5%  | 1             | R012       |         |
| 18-CB0103-JNX | RES. C.F. 10K OHM 1/6W +/-5%  | 1             | R011       |         |
| 18-CB0103-JNX | RES. C.F. 10K OHM 1/6W +/-5%  | 1             | R030       |         |
| 18-CB0103-JNX | RES. C.F. 10K OHM 1/6W +/-5%  | 1             | R050       |         |
| 18-CB0103-JNX | RES. C.F. 10K OHM 1/6W +/-5%  | 1             | R043       |         |
| 18-CB0103-JNX | RES. C.F. 10K OHM 1/6W +/-5%  | 1             | R042       |         |
| 18-CB0103-JNX | RES. C.F. 10K OHM 1/6W +/-5%  | 1             | R006       |         |
| 18-CB0103-JNX | RES. C.F. 10K OHM 1/6W +/-5%  | 1             | R406       |         |
| 18-CB0102-JNX | RES. C.F. 1K OHM 1/6W +/-5%   | 1             | R924       |         |
| 18-CB0103-JNX | RES. C.F. 10K OHM 1/6W +/-5%  | 1             | R047       |         |
| 18-CB0103-JNX | RES. C.F. 10K OHM 1/6W +/-5%  | 1             | R052       |         |
| 18-CB0104-JNX | RES. C.F. 100K OHM 1/6W +/-5% | 1             | R031       |         |
| 18-CB0121-JNX | RES. C.F. 120 OHM 1/6W +/-5%  | 1             | R227       |         |
| 18-CB0123-JNX | RES. C.F. 12k OHM 1/6W +/-5%  | 1             | R212       |         |
| 18-CB0151-JNX | RES. C.F. 150 OHM 1/6W +/-5%  | 1             | R115       |         |
| 18-CB0151-JNX | RES. C.F. 150 OHM 1/6W +/-5%  | 1             | R117       |         |
| 18-CB0122-JNX | RES. C.F. 1.2k OHM 1/6W +/-5% | 1             | R007       |         |
| 18-CB0153-JNX | RES. C.F. 15k OHM 1/6W +/-5%  | 1             | R315       |         |
| 18-CB0221-JNX | RES. C.F. 220 OHM 1/6W +/-5%  | 1             | R201       |         |
| 18-CB0221-JNX | RES. C.F. 220 OHM 1/6W +/-5%  | 1             | R202       |         |
| 18-CB0221-JNX | RES. C.F. 220 OHM 1/6W +/-5%  | 1             | R203       |         |
| 18-CB0221-JNX | RES. C.F. 220 OHM 1/6W +/-5%  | 1             | R220       |         |
| 18-CB0221-JNX | RES. C.F. 220 OHM 1/6W +/-5%  | 1             | R238       |         |
| 18-CB0221-JNX | RES. C.F. 220 OHM 1/6W +/-5%  | 1             | R401       |         |
| 18-CB0222-JNX | RES. C.F. 2.2k OHM 1/6W +/-5% | 1             | R055       |         |
| 18-CB0222-JNX | RES. C.F. 2.2k OHM 1/6W +/-5% | 1             | R044       |         |
| 18-CB0223-JNX | RES. C.F. 22k OHM 1/6W +/-5%  | 1             | R215       |         |
| 18-CB0223-JNX | RES. C.F. 22k OHM 1/6W +/-5%  | 1             | R912       |         |

| Item No.      | Description                   | Quantity Req. | Designator | Remarks |
|---------------|-------------------------------|---------------|------------|---------|
| 18-CB0223-JNX | RES. C.F. 22k OHM 1/6W +/-5%  | 1             | R913       |         |
| 18-CB0224-JNX | RES. C.F. 220k OHM 1/6W +/-5% | 1             | R206       |         |
| 18-CB0271-JNX | RES. C.F. 270 OHM 1/6W +/-5%  | 1             | R217       |         |
| 18-CB0271-JNX | RES. C.F. 270 OHM 1/6W +/-5%  | 1             | R233       |         |
| 18-CB0303-JNX | RES. C.F. 30K OHM 1/6W +/-5%  | 1             | R205       |         |
| 18-CB0331-JNX | RES. C.F. 330 OHM 1/6W +/-5%  | 1             | R219       |         |
| 18-CB0332-JNX | RES. C.F. 3.3k OHM 1/6W +/-5% | 1             | R218A      |         |
| 18-CB0332-JNX | RES. C.F. 3.3k OHM 1/6W +/-5% | 1             | R046       |         |
| 18-CB0333-JNX | RES. C.F. 33K OHM 1/6W +/-5%  | 1             | R602       |         |
| 18-CB0334-JNX | RES. C.F. 330K OHM 1/6W +/-5% | 1             | R232       |         |
| 18-CB0392-JNX | RES. C.F. 3.9K OHM 1/6W +/-5% | 1             | R213       |         |
| 18-CB0392-JNX | RES. C.F. 3.9K OHM 1/6W +/-5% | 1             | R214       |         |
| 18-CB0470-JNX | RES. C.F. 47 OHM 1/6W +/-5%   | 1             | R002       |         |
| 18-CB0471-JNX | RES. C.F. 470 OHM 1/6W +/-5%  | 1             | R119       |         |
| 18-CB0471-JNX | RES. C.F. 470 OHM 1/6W +/-5%  | 1             | R208       |         |
| 18-CB0472-JNX | RES. C.F. 4.7k OHM 1/6W +/-5% | 1             | R015       |         |
| 18-CB0472-JNX | RES. C.F. 4.7k OHM 1/6W +/-5% | 1             | R311       |         |
| 18-CB0473-JNX | RES. C.F. 47K OHM 1/6W +/-5%  | 1             | R216       |         |
| 18-CB0473-JNX | RES. C.F. 47K OHM 1/6W +/-5%  | 1             | R245       |         |
| 18-CB0560-JNX | RES. C.F. 56 OHM 1/6W +/-5%   | 1             | R114       |         |
| 18-CB0561-JNX | RES. C.F. 560 OHM 1/6W +/-5%  | 1             | R209       |         |
| 18-CB0564-JNX | RES. C.F. 560K OHM 1/6W +/-5% | 1             | R210       |         |
| 18-CB0681-JNX | RES. C.F. 680 OHM 1/6W +/-5%  | 1             | R028       |         |
| 18-CB0683-JNX | RES. C.F. 68K OHM 1/6W +/-5%  | 1             | R211       |         |
| 18-CB0751-JNX | RES. C.F. 750 OHM 1/6W +/-5%  | 1             | R008       |         |
| 18-CB0820-JNX | RES. C.F. 82 OHM 1/6W +/-5%   | 1             | R903       |         |
| 18-CB0820-JNX | RES. C.F. 82 OHM 1/6W +/-5%   | 1             | R923       |         |
| 18-CB0821-JNX | RES. C.F. 820 OHM 1/6W +/-5%  | 1             | R118       |         |
| 18-CB0822-JNX | RES. C.F. 8.2K OHM 1/6W +/-5% | 1             | R237       |         |
| 18-CB0822-JNX | RES. C.F. 8.2K OHM 1/6W +/-5% | 1             | R606       |         |
| 18-CD0100-JNX | RES. C.F. 10 OHM 1/4W +/-5%   | 1             | R027       |         |

| Item No.       | Description                       | Quantity Req. | Designator | Remarks |
|----------------|-----------------------------------|---------------|------------|---------|
| 18-DB0103-FNX  | RES. M.F. 10K OHM 1/6W +/-1%      | 1             | R302       |         |
| 18-DB0104-FNX  | RES. M.F. 100K OHM 1/6W +/-1%     | 1             | R303       |         |
| 18-DB0153-FNX  | RES. M.F. 15K OHM 1/6W +/-1%      | 1             | R244       |         |
| 18-DB0223-FNX  | RES. M.F. 22K OHM 1/6W +/-1%      | 1             | R306       |         |
| 18-EF0109-JGX  | RES. FUS. 1 OHM 1W +/-5% (LS)     | 1             | R403       |         |
| 18-EF0109-JGX  | RES. FUS. 1 OHM 1W +/-5% (LS)     | 1             | R405       |         |
| 18-EF0109-JGX  | RES. FUS. 1 OHM 1W +/-5% (LS)     | 1             | R418       |         |
| 18-EF0109-JGX  | RES. FUS. 1 OHM 1W +/-5% (LS)     | 1             | R409       |         |
| 18-FF0103-JGX  | RES. M.O. 10k OHM 1W +/-5%        | 1             | R410       |         |
| 18-FF0123-JGX  | RES. M.O. 12k OHM 1W +/-5%        | 1             | R408       |         |
| 18-FF0129-JGX  | RES. M.O. 1.2 OHM 1W +/-5%        | 1             | R304       |         |
| 18-FF0221-JGX  | RES. M.O. 220 OHM 1W +/-5%        | 1             | R336       |         |
| 18-FG0153-JHX  | RES. M.O. 15k OHM 2W +/-5%        | 1             | R404       |         |
| 18-GJ0332-JUX1 | RES. C.C. 5W 3.3KOHM +/-5%        | 1             | R402       |         |
| 18-RG0228-JHX  | RES. WIRE ROUND 0.22 OHM 2W +/-5% | 1             | R620       |         |
| 25-BCA102-M1X  | CAP. ELEC 1000 UF 16V +/-20%      | 1             | C232       |         |
| 25-BCB100-M1X  | CAP. ELEC 10 UF 16V +/-20%        | 1             | C004       |         |
| 25-BCB100-M1X  | CAP. ELEC 10 UF 16V +/-20%        | 1             | C220       |         |
| 25-BCB100-M1X  | CAP. ELEC 10 UF 16V +/-20%        | 1             | C023       |         |
| 25-BCB100-M1X  | CAP. ELEC 10 UF 16V +/-20%        | 1             | C227       |         |
| 25-BCB100-M1X  | CAP. ELEC 10 UF 16V +/-20%        | 1             | C231       |         |
| 25-BCB100-M1X  | CAP. ELEC 10 UF 16V +/-20%        | 1             | C603       |         |
| 25-BCB100-M1X  | CAP. ELEC 10 UF 16V +/-20%        | 1             | C901       |         |
| 25-BCB100-M1X  | CAP. ELEC 10 UF 16V +/-20%        | 1             | C902       |         |
| 25-BCB100-M1X  | CAP. ELEC 10 UF 16V +/-20%        | 1             | C907       |         |
| 25-BCB100-M1X  | CAP. ELEC 10 UF 16V +/-20%        | 1             | C025       |         |
| 25-BCB100-M1X  | CAP. ELEC 10 UF 16V +/-20%        | 1             | C311       |         |
| 25-BCB101-M1X  | CAP. ELEC 100 UF 16V +/-20%       | 1             | C240       |         |
| 25-BCB101-M1X  | CAP. ELEC 100 UF 16V +/-20%       | 1             | C605       |         |
| 25-BCB101-M1X  | CAP. ELEC 100 UF 16V +/-20%       | 1             | C211       |         |
| 25-BCB101-M1X  | CAP. ELEC 100 UF 16V +/-20%       | 1             | C101       |         |

| Item No.      | Description                    | Quantity Req. | Designator | Remarks |
|---------------|--------------------------------|---------------|------------|---------|
| 25-BCB101-M1X | CAP. ELEC 100 UF 16V +/-20%    | 1             | C016       |         |
| 25-BCB101-M1X | CAP. ELEC 100 UF 16V +/-20%    | 1             | C903       |         |
| 25-BCB221-M1X | CAP. ELEC 220 UF 16V +/-20%    | 1             | C418       |         |
| 25-BCB221-M1X | CAP. ELEC 220 UF 16V +/-20%    | 1             | C906       |         |
| 25-BCB470-M1X | CAP. ELEC 47 UF 16V +/-20%     | 1             | C423       |         |
| 25-BCB470-M1X | CAP. ELEC 47 UF 16V +/-20%     | 1             | C202       |         |
| 25-BCB470-M1X | CAP. ELEC 47 UF 16V +/-20%     | 1             | C082       |         |
| 25-BDA471-M1X | CAP. ELEC 470 UF 25V +/-20%    | 1             | C217       |         |
| 25-BDA471-M1X | CAP. ELEC 470 UF 25V +/-20%    | 1             | C604       |         |
| 25-BDA471-M1X | CAP. ELEC 470 UF 25V +/-20%    | 1             | C415       |         |
| 25-BDB221-M1X | CAP. ELEC 220 UF 25V +/-20%    | 1             | C301       |         |
| 25-BEA102-M1X | CAP. ELEC 1000 UF 35V +/-20%   | 1             | C413       |         |
| 25-BEB101-M1X | CAP. ELEC 100 UF 35V +/-20%    | 1             | C302       |         |
| 25-BFB109-M1X | CAP. ELEC 1 UF 50V +/-20%      | 1             | C208       |         |
| 25-BFB109-M1X | CAP. ELEC 1 UF 50V +/-20%      | 1             | C915       |         |
| 25-BFB109-M1X | CAP. ELEC 1 UF 50V +/-20%      | 1             | C916       |         |
| 25-BFB109-M1X | CAP. ELEC 1 UF 50V +/-20%      | 1             | C203       |         |
| 25-BFB109-M1X | CAP. ELEC 1 UF 50V +/-20%      | 1             | C008A      |         |
| 25-BFB109-M1X | CAP. ELEC 1 UF 50V +/-20%      | 1             | C214       |         |
| 25-BFB220-M1X | CAP. ELEC 22 UF 50V +/-20%     | 1             | C106       |         |
| 25-BFB478-M1X | CAP. ELEC 0.47 UF 50V +/-20%   | 1             | C218       |         |
| 25-BFB479-M1X | CAP. ELEC 4.7 UF 50V +/-20%    | 1             | C304       |         |
| 25-BFB479-M1X | CAP. ELEC 4.7 UF 50V +/-20%    | 1             | C216       |         |
| 25-BFB479-M1X | CAP. ELEC 4.7 UF 50V +/-20%    | 1             | C104       |         |
| 25-BFB479-M1X | CAP. ELEC 4.7 UF 50V +/-20%    | 1             | C310       |         |
| 25-BHB100-M1X | CAP. ELEC 10 UF 100V +/-20%    | 1             | C420       |         |
| 25-BJA470-M1X | CAP. ELEC 47 UF 160V +/-20%    | 1             | C411       |         |
| 25-BLA100-M1X | CAP. ELEC 10 UF 250V +/-20%    | 1             | C408       |         |
| 25-GFB228-K1X | CAP. ELEC 0.22 UF 50V +/-10%   | 1             | C205       |         |
| 25-GFB478-K1X | CAP. ELEC 0.47 UF 50V 10%CEC-K | 1             | C234       |         |
| 25-GFB478-K1X | CAP. ELEC 0.47 UF 50V 10%CEC-K | 1             | C236       |         |



| Item No.      | Description                    | Quantity Req. | Designator | Remarks |
|---------------|--------------------------------|---------------|------------|---------|
| 26-ABC101-JZX | CAP. CER 100 PF 50V +/-5% SL   | 1             | C001       |         |
| 26-ABC101-JZX | CAP. CER 100 PF 50V +/-5% SL   | 1             | C002       |         |
| 26-ABC390-JZX | CAP. CER 39 PF 50V +/-5% SL    | 1             | C021       |         |
| 26-ABC390-JZX | CAP. CER 39 PF 50V +/-5% SL    | 1             | C022       |         |
| 26-AIC102-KBX | CAP. CER 1000 PF 500V +/-10% B | 1             | C401       |         |
| 26-AIC102-KBX | CAP. CER 1000 PF 500V +/-10% B | 1             | C404       |         |
| 26-AIC391-KBX | CAP. CER 390 PF 500V +/-10% B  | 1             | C409       |         |
| 26-EBP102-KBX | CAP. CER 1000 PF 50V +/-10% B  | 1             | C112       |         |
| 26-EBP102-KBX | CAP. CER 1000 PF 50V +/-10% B  | 1             | C219       |         |
| 26-EBP103-ZFX | CAP. CER 0.01UF 50V +80/-20% F | 1             | C212       |         |
| 26-EBP103-ZFX | CAP. CER 0.01UF 50V +80/-20% F | 1             | C102       |         |
| 26-EBP103-ZFX | CAP. CER 0.01UF 50V +80/-20% F | 1             | C019       |         |
| 26-EBP103-ZFX | CAP. CER 0.01UF 50V +80/-20% F | 1             | C114       |         |
| 26-EBP103-ZFX | CAP. CER 0.01UF 50V +80/-20% F | 1             | C024       |         |
| 26-EBP103-ZFX | CAP. CER 0.01UF 50V +80/-20% F | 1             | C201       |         |
| 26-EBP103-ZFX | CAP. CER 0.01UF 50V +80/-20% F | 1             | C241       |         |
| 26-EBP103-ZFX | CAP. CER 0.01UF 50V +80/-20% F | 1             | C005       |         |
| 26-EBP103-ZFX | CAP. CER 0.01UF 50V +80/-20% F | 1             | C228       |         |
| 26-EBP103-ZFX | CAP. CER 0.01UF 50V +80/-20% F | 1             | C230       |         |
| 26-EBP103-ZFX | CAP. CER 0.01UF 50V +80/-20% F | 1             | C233       |         |
| 26-EBP103-ZFX | CAP. CER 0.01UF 50V +80/-20% F | 1             | C425       |         |
| 26-EBP103-ZFX | CAP. CER 0.01UF 50V +80/-20% F | 1             | C417       |         |
| 26-EBP103-ZFX | CAP. CER 0.01UF 50V +80/-20% F | 1             | C110       |         |
| 26-EBP103-ZFX | CAP. CER 0.01UF 50V +80/-20% F | 1             | C239       |         |
| 26-EBP103-ZFX | CAP. CER 0.01UF 50V +80/-20% F | 1             | C020       |         |
| 26-EBP103-ZFX | CAP. CER 0.01UF 50V +80/-20% F | 1             | C017       |         |
| 26-EBP103-ZFX | CAP. CER 0.01UF 50V +80/-20% F | 1             | C221       |         |
| 26-EBP103-ZFX | CAP. CER 0.01UF 50V +80/-20% F | 1             | C081       |         |
| 26-EBP103-ZFX | CAP. CER 0.01UF 50V +80/-20% F | 1             | C105       |         |
| 26-EBP152-KBX | CAP. CER 1500pF 50V +/-10% B   | 1             | C209       |         |
| 26-EBP181-JCX | CAP. CER 180PF 50V +/-5% CH    | 1             | C207       |         |

| Item No.      | Description                         | Quantity Req. | Designator | Remarks |
|---------------|-------------------------------------|---------------|------------|---------|
| 26-EBP270-JCX | CAP. CER 27PF 50V +/-5% CH          | 1             | C011       |         |
| 26-EBP272-KBX | CAP. CER 2700pF 50V +/-10% B        | 1             | C210       |         |
| 26-EBP331-JCX | CAP. CER 330PF 50V +/-5% CH         | 1             | C018       |         |
| 26-EBP391-JCX | CAP. CER. 390PF 50V +/-5% CH        | 1             | C403       |         |
| 26-EBP391-JCX | CAP. CER. 390PF 50V +/-5% CH        | 1             | C412       |         |
| 27-AGQ563-JOX | CAP. M. PP 0.056 UF 250V +/-5%      | 1             | C410       |         |
| 27-MBC104-JOX | CAP. M. P. E 0.1 UF 63V +/-5%       | 1             | C909       |         |
| 27-MBC104-JOX | CAP. M. P. E 0.1 UF 63V +/-5%       | 1             | C610       |         |
| 27-MBC104-JOX | CAP. M. P. E 0.1 UF 63V +/-5%       | 1             | C309       |         |
| 27-MBC104-JOX | CAP. M. P. E 0.1 UF 63V +/-5%       | 1             | C242       |         |
| 27-MBC224-JOX | CAP. M. P. E 0.22UF 63V +/-5%       | 1             | C305       |         |
| 27-MBC474-JOX | CAP. M. P. E 0.47UF 63V +/-5%       | 1             | C601       |         |
| 27-MBC474-JOX | CAP. M. P. E 0.47UF 63V +/-5%       | 1             | C602       |         |
| 27-PBC222-JOX | CAP. P. E 0.0022UF 63V +/-5%        | 1             | C213       |         |
| 27-PBC222-JOX | CAP. P. E 0.0022UF 63V +/-5%        | 1             | C204       |         |
| 27-PBC562-JOX | CAP. P. E 0.0056UF 63V +/-5%        | 1             | C422       |         |
| 27-PBC822-JOX | CAP. P. E 0.0082UF 63V +/-5%        | 1             | C235       |         |
| 34-A109K0-11X | COIL CHOKE 1 UH +/-10%              | 1             | L103       |         |
| 34-A109K0-11X | COIL CHOKE 1 UH +/-10%              | 1             | L102       |         |
| 34-A608K6-1BX | COIL CHOKE 0.6 UH +/-10%            | 1             | L402       |         |
| 34-R100J2-OEX | COIL PL - 10 UH +/-5%               | 1             | L002       |         |
| 34-R220J2-OEX | COIL PL - 22 UH +/-5%               | 1             | L208       |         |
| 34-R220J2-OEX | COIL PL - 22 UH +/-5%               | 1             | L207       |         |
| 34-R330J2-OEX | COIL PL - 33 UH +/-5%               | 1             | L080       |         |
| 34-R330J2-OEX | COIL PL - 33 UH +/-5%               | 1             | L202       |         |
| 34-R829J2-OEX | COIL PL - 8.2 UH +/-5%              | 1             | L204       |         |
| 36-HDR001-AX1 | TRANSFOR HOR. DRIVE (MAGNETIC CORE) | 1             | T401       |         |
| 41-WJ0050-B00 | WIRE BARE JUMPER 5MM                | 1             | L101       |         |
| 41-WJ0060-B00 | WIRE BARE JUMPER 6mm                | 1             | J009A      |         |
| 41-WJ0060-B00 | WIRE BARE JUMPER 6mm                | 1             | J015       |         |
| 41-WJ0060-B00 | WIRE BARE JUMPER 6mm                | 1             | J101       |         |

| Item No.      | Description             | Quantity Req. | Designator | Remarks |
|---------------|-------------------------|---------------|------------|---------|
| 41-WJ0060-B00 | WI RE BARE JUMPER 6mm   | 1             | J203       |         |
| 41-WJ0060-B00 | WI RE BARE JUMPER 6mm   | 1             | J210       |         |
| 41-WJ0060-B00 | WI RE BARE JUMPER 6mm   | 1             | J211       |         |
| 41-WJ0060-B00 | WI RE BARE JUMPER 6mm   | 1             | R204       |         |
| 41-WJ0060-B00 | WI RE BARE JUMPER 6mm   | 1             | R207       |         |
| 41-WJ0060-B00 | WI RE BARE JUMPER 6mm   | 1             | R249       |         |
| 41-WJ0060-B00 | WI RE BARE JUMPER 6mm   | 1             | J001       |         |
| 41-WJ0060-B00 | WI RE BARE JUMPER 6mm   | 1             | R200       |         |
| 41-WJ0060-B00 | WI RE BARE JUMPER 6mm   | 1             | J907       |         |
| 41-WJ0065-B00 | WI RE BARE JUMPER 6.5MM | 1             | J305       |         |
| 41-WJ0065-B00 | WI RE BARE JUMPER 6.5MM | 1             | J010       |         |
| 41-WJ0065-B00 | WI RE BARE JUMPER 6.5MM | 1             | J208       |         |
| 41-WJ0065-B00 | WI RE BARE JUMPER 6.5MM | 1             | J301       |         |
| 41-WJ0070-B00 | WI RE BARE JUMPER 7MM   | 1             | J217A      |         |
| 41-WJ0070-B00 | WI RE BARE JUMPER 7MM   | 1             | J011       |         |
| 41-WJ0070-B00 | WI RE BARE JUMPER 7MM   | 1             | J012       |         |
| 41-WJ0075-B00 | WI RE BARE JUMPER 7.5MM | 1             | J018       |         |
| 41-WJ0075-B00 | WI RE BARE JUMPER 7.5MM | 1             | J205       |         |
| 41-WJ0075-B00 | WI RE BARE JUMPER 7.5MM | 1             | J206       |         |
| 41-WJ0075-B00 | WI RE BARE JUMPER 7.5MM | 1             | J207       |         |
| 41-WJ0075-B00 | WI RE BARE JUMPER 7.5MM | 1             | J218       |         |
| 41-WJ0075-B00 | WI RE BARE JUMPER 7.5MM | 1             | J215       |         |
| 41-WJ0075-B00 | WI RE BARE JUMPER 7.5MM | 1             | J602       |         |
| 41-WJ0075-B00 | WI RE BARE JUMPER 7.5MM | 1             | J303       |         |
| 41-WJ0075-B00 | WI RE BARE JUMPER 7.5MM | 1             | J022       |         |
| 41-WJ0075-B00 | WI RE BARE JUMPER 7.5MM | 1             | J913       |         |
| 41-WJ0075-B00 | WI RE BARE JUMPER 7.5MM | 1             | J225       |         |
| 41-WJ0075-B00 | WI RE BARE JUMPER 7.5MM | 1             | J914       |         |
| 41-WJ0075-B00 | WI RE BARE JUMPER 7.5MM | 1             | J901       |         |
| 41-WJ0080-B00 | WI RE BARE JUMPER 8 MM  | 1             | J108       |         |
| 41-WJ0080-B00 | WI RE BARE JUMPER 8 MM  | 1             | J903       |         |

| Item No.      | Description               | Quantity Req. | Designator | Remarks |
|---------------|---------------------------|---------------|------------|---------|
| 41-WJ0080-B00 | WI RE BARE JUMPER 8 MM    | 1             | J919       |         |
| 41-WJ0085-B00 | WI RE BARE JUMPER 8. 5MM  | 1             | J219       |         |
| 41-WJ0085-B00 | WI RE BARE JUMPER 8. 5MM  | 1             | J209       |         |
| 41-WJ0085-B00 | WI RE BARE JUMPER 8. 5MM  | 1             | J302       |         |
| 41-WJ0085-B00 | WI RE BARE JUMPER 8. 5MM  | 1             | J306       |         |
| 41-WJ0085-B00 | WI RE BARE JUMPER 8. 5MM  | 1             | J920       |         |
| 41-WJ0090-B00 | WI RE BARE JUMPER 9MM     | 1             | J212       |         |
| 41-WJ0090-B00 | WI RE BARE JUMPER 9MM     | 1             | J904       |         |
| 41-WJ0095-B00 | WI RE BARE JUMPER 9. 5MM  | 1             | J230       |         |
| 41-WJ0095-B00 | WI RE BARE JUMPER 9. 5MM  | 1             | J601       |         |
| 41-WJ0095-B00 | WI RE BARE JUMPER 9. 5MM  | 1             | J231       |         |
| 41-WJ0095-B00 | WI RE BARE JUMPER 9. 5MM  | 1             | J229       |         |
| 41-WJ0100-B00 | WI RE BARE JUMPER 10MM    | 1             | J102       |         |
| 41-WJ0100-B00 | WI RE BARE JUMPER 10MM    | 1             | J221       |         |
| 41-WJ0100-B00 | WI RE BARE JUMPER 10MM    | 1             | J002       |         |
| 41-WJ0100-B00 | WI RE BARE JUMPER 10MM    | 1             | J002A      |         |
| 41-WJ0100-B00 | WI RE BARE JUMPER 10MM    | 1             | J003       |         |
| 41-WJ0100-B00 | WI RE BARE JUMPER 10MM    | 1             | J402       |         |
| 41-WJ0100-B00 | WI RE BARE JUMPER 10MM    | 1             | J110       |         |
| 41-WJ0100-B00 | WI RE BARE JUMPER 10MM    | 1             | J917       |         |
| 41-WJ0100-B00 | WI RE BARE JUMPER 10MM    | 1             | J111       |         |
| 41-WJ0100-B00 | WI RE BARE JUMPER 10MM    | 1             | J017       |         |
| 41-WJ0100-B00 | WI RE BARE JUMPER 10MM    | 1             | J910       |         |
| 41-WJ0100-B00 | WI RE BARE JUMPER 10MM    | 1             | J911       |         |
| 41-WJ0100-B00 | WI RE BARE JUMPER 10MM    | 1             | J921       |         |
| 41-WJ0105-B00 | WI RE BARE JUMPER 10. 5MM | 1             | J004       |         |
| 41-WJ0105-B00 | WI RE BARE JUMPER 10. 5MM | 1             | J304       |         |
| 41-WJ0110-B00 | WI RE BARE JUMPER 11MM    | 1             | J016       |         |
| 41-WJ0110-B00 | WI RE BARE JUMPER 11MM    | 1             | J226       |         |
| 41-WJ0115-B00 | WI RE BARE JUMPER 11. 5MM | 1             | J604       |         |
| 41-WJ0125-B00 | WI RE BARE JUMPER 12. 5MM | 1             | J106       |         |

| Item No.      | Description               | Quantity Req. | Designator | Remarks                   |
|---------------|---------------------------|---------------|------------|---------------------------|
| 41-WJ0125-B00 | WIRE BARE JUMPER 12.5MM   | 1             | R317       |                           |
| 41-WJ0125-B00 | WIRE BARE JUMPER 12.5MM   | 1             | J216       |                           |
| 41-WJ0130-B00 | WIRE BARE JUMPER 13MM     | 1             | J204       |                           |
| 41-WJ0130-B00 | WIRE BARE JUMPER 13MM     | 1             | J006       |                           |
| 41-WJ0135-B00 | WIRE BARE JUMPER 13.5MM   | 1             | J014       |                           |
| 41-WJ0140-B00 | WIRE BARE JUMPER 14MM     | 1             | J005       |                           |
| 41-WJ0160-B00 | WIRE BARE JUMPER 16MM     | 1             | J105       |                           |
| 41-WJ0165-B00 | WIRE BARE JUMPER 16.5MM   | 1             | J220       |                           |
| 41-WJ0165-B00 | WIRE BARE JUMPER 16.5MM   | 1             | J013       |                           |
| 41-WJ0170-B00 | WIRE BARE JUMPER 17MM     | 1             | J401       |                           |
| 41-WJ0175-B00 | WIRE BARE JUMPER 17.5MM   | 1             | R045       |                           |
| 41-WJ0195-B00 | WIRE BARE JUMPER 19.5MM   | 1             | J003A      |                           |
| 41-WJ0200-B00 | WIRE BARE JUMPER 20MM     | 1             | J233       |                           |
| 45-OSC8M0-0Y0 | CRYSTAL 8.0MHZ            | 1             | X001       |                           |
| 45-TRA4M5-0Y0 | CER TRAP TPS 4.5MHZ       | 1             | X201       |                           |
| 46-12866W-02X | PIN BASE *2 S11-02Y       | 1             |            | P601 FOR FRONT CAB. (SPK) |
| 46-20598W-04X | PIN BASE *4 TJC1-4A       | 1             |            | P401 FOR DY CONNECTER     |
| 46-33079W-02X | PIN BASE *2 TJC3-2A       | 1             |            | P602 FOR FRONT CAB. (SPK) |
| 46-33079W-05X | PIN BASE *5 TJC3-5A       | 1             |            | P201 FOR CRT BD P503      |
| 46-35107W-03X | PIN BASE EH-3A            | 1             | P001       |                           |
| 46-35179W-04X | PIN BASE TJC3-4A          | 1             |            | P402 FOR CRT BD P502      |
| 57-10654X-00F | cable ties (2.5mmX95mm)   | 3             |            |                           |
| 64-P30060-104 | M/C SCREW 3 X 6 (ZINC)    | 2             |            | FOR IC401 & IC402         |
| 64-P30100-104 | M/C SCREW P 3 X 10        | 2             |            | FOR IC601                 |
| 64-P30100-104 | M/C SCREW P 3 X 10        | 2             |            | FOR Q402 & IC301          |
| 65-Z30050-23M | NUT M 3                   | 2             |            | FOR Q402 & IC301          |
| 66-343730-0B0 | HOLLOW RIVET 1.6X3.0XL3.2 | 2             |            | FOR L411                  |
| 66-343730-0B0 | HOLLOW RIVET 1.6X3.0XL3.2 | 3             |            | FOR Q402                  |
| 66-343730-0B0 | HOLLOW RIVET 1.6X3.0XL3.2 | 9             |            | FOR T402                  |
| 66-343730-0B0 | HOLLOW RIVET 1.6X3.0XL3.2 | 2             |            | FOR L412                  |
| 66-343730-0B0 | HOLLOW RIVET 1.6X3.0XL3.2 | 4             |            | FOR C421, C406B           |

| Item No.        | Description                      | Quantity Req. | Designator | Remarks                             |
|-----------------|----------------------------------|---------------|------------|-------------------------------------|
| 66-382330-OB7   | RIVET 2.0X3.7X3.5                | 2             |            | FOR IC601 (H. SINK)                 |
| 67-H24249-2M2   | HEAT SINK                        | 1             |            | FOR IC402                           |
| 67-H24249-3M2   | HEAT SINK                        | 1             |            | FOR IC401                           |
| 67-H30752-3A0   | HEAT SINK                        | 2             |            | FOR IC301 & Q402                    |
| 67-H34423-EA0   | HEAT SINK                        | 1             |            | FOR IC601                           |
| 18-CD0101-JNX   | RES. C.F. 100 OHM 1/4W +/-5%     | 1             | R621       |                                     |
| 62-227680-OUA   | BRACKET ABS-KINGFA 606 (U0)      | 1             |            |                                     |
| 27-RCP333-JOX   | CAP. PP 0.033 UF 100V +/-5%      | 1             | C405       |                                     |
| 41-WJ0025-B00   | WIRE BARE JUMPER 2.5mm           | 1             |            | FOR Q404 (C-E)                      |
| 25-BCB101-M1X   | CAP. ELEC 100 UF 16V +/-20%      | 1             |            | C900(-) TO GND                      |
| 46-35179W-04X   | PIN BASE TJC3-4A                 | 1             |            | P005 (PIN 1 TO PIN 4 , EMPTY PIN 3) |
| 13-L7805C-VAP   | IC L7805CV 1.5A (REGULATOR)      | 1             | IC402      |                                     |
| 27-MBC103-JOX   | CAP. M.P.E 0.01UF 63V +/-5%      | 1             | C215       |                                     |
| 27-PBC472-JOX   | CAP. P.E 0.0047UF 63V +/-5%      | 1             | C607       |                                     |
| 27-PBC472-JOX   | CAP. P.E 0.0047UF 63V +/-5%      | 1             | C608       |                                     |
| 25-BCB101-M1X   | CAP. ELEC 100 UF 16V +/-20%      | 1             |            | 并在R925 “ - ” 极 TO GND               |
| 18-CB0220-JNX   | RES. C.F. 22 OHM 1/6W +/-5%      | 1             | R001       |                                     |
| 18-CB0220-JNX   | RES. C.F. 22 OHM 1/6W +/-5%      | 1             | R005       |                                     |
| 18-CB0472-JNX   | RES. C.F. 4.7k OHM 1/6W +/-5%    | 1             | R003       |                                     |
| 18-CB0472-JNX   | RES. C.F. 4.7k OHM 1/6W +/-5%    | 1             | R004       |                                     |
| 40-2111SG-MAG1X | P.C.B. MAIN PCB BD               | 1             |            |                                     |
| 34-A220K0-11X   | COIL CHOKE 22UH +/-10%           | 1             | L201       |                                     |
| 66-343740-OB0   | HOLLOW RIVET (2.3mmx4.0mmx3.5mm) | 2             |            | FOR R402                            |
| 08-0A21SG-MSY   |                                  | 1             |            |                                     |
| 11-SC1815-YBX   | TRANSISTOR 2SC1815Y              | 1             | Q1003      |                                     |
| 11-SC1815-YBX   | TRANSISTOR 2SC1815Y              | 1             | Q1005      |                                     |
| 11-SC1815-YBX   | TRANSISTOR 2SC1815Y              | 1             | Q1006      |                                     |
| 11-SC1815-YBX   | TRANSISTOR 2SC1815Y              | 1             | Q1001      |                                     |
| 13-MSP342-5GP   | IC MSP 3425G B8 V3               | 1             | IC1001     |                                     |
| 18-CB0101-JNX   | RES. C.F. 100 OHM 1/6W +/-5%     | 1             | R1001      |                                     |
| 18-CB0101-JNX   | RES. C.F. 100 OHM 1/6W +/-5%     | 1             | R1002      |                                     |

| Item No.      | Description                    | Quantity Req. | Designator | Remarks |
|---------------|--------------------------------|---------------|------------|---------|
| 18-CB0101-JNX | RES. C.F. 100 OHM 1/6W +/-5%   | 1             | R1010      |         |
| 18-CB0102-JNX | RES. C.F. 1K OHM 1/6W +/-5%    | 1             | R1004      |         |
| 18-CB0102-JNX | RES. C.F. 1K OHM 1/6W +/-5%    | 1             | R1014      |         |
| 18-CB0102-JNX | RES. C.F. 1K OHM 1/6W +/-5%    | 1             | R1015      |         |
| 18-CB0102-JNX | RES. C.F. 1K OHM 1/6W +/-5%    | 1             | R1016      |         |
| 18-CB0102-JNX | RES. C.F. 1K OHM 1/6W +/-5%    | 1             | R1017      |         |
| 18-CB0102-JNX | RES. C.F. 1K OHM 1/6W +/-5%    | 1             | R1022      |         |
| 18-CB0102-JNX | RES. C.F. 1K OHM 1/6W +/-5%    | 1             | R1023      |         |
| 18-CB0103-JNX | RES. C.F. 10K OHM 1/6W +/-5%   | 1             | R1003      |         |
| 18-CB0152-JNX | RES. C.F. 1.5k OHM 1/6W +/-5%  | 1             | R1007      |         |
| 18-CB0332-JNX | RES. C.F. 3.3k OHM 1/6W +/-5%  | 1             | R1005      |         |
| 18-CB0391-JNX | RES. C.F. 390 OHM 1/6W +/-5%   | 1             | R1011      |         |
| 18-CB0470-JNX | RES. C.F. 47 OHM 1/6W +/-5%    | 1             | R1006      |         |
| 25-BCB100-M1X | CAP. ELEC 10 UF 16V +/-20%     | 1             | C1009      |         |
| 25-BCB100-M1X | CAP. ELEC 10 UF 16V +/-20%     | 1             | C1013      |         |
| 25-BCB100-M1X | CAP. ELEC 10 UF 16V +/-20%     | 1             | C1014      |         |
| 25-BCB100-M1X | CAP. ELEC 10 UF 16V +/-20%     | 1             | C1015      |         |
| 25-BCB100-M1X | CAP. ELEC 10 UF 16V +/-20%     | 1             | C1016      |         |
| 25-BCB100-M1X | CAP. ELEC 10 UF 16V +/-20%     | 1             | C1022      |         |
| 25-BCB100-M1X | CAP. ELEC 10 UF 16V +/-20%     | 1             | C1023      |         |
| 25-BCB470-M1X | CAP. ELEC 47 UF 16V +/-20%     | 1             | C1038      |         |
| 25-BCB470-M1X | CAP. ELEC 47 UF 16V +/-20%     | 1             | C1042      |         |
| 25-BFB339-M1X | CAP. ELEC 3.3 UF 50V +/-20%    | 1             | C1010      |         |
| 26-ABC339-CZX | CAP. CER 3.3 PF 50V +/-0.25 SL | 1             | C1001      |         |
| 26-ABC339-CZX | CAP. CER 3.3 PF 50V +/-0.25 SL | 1             | C1002      |         |
| 26-EBP102-KBX | CAP. CER 1000 PF 50V +/-10% B  | 1             | C1018      |         |
| 26-EBP102-KBX | CAP. CER 1000 PF 50V +/-10% B  | 1             | C1019      |         |
| 26-EBP102-KBX | CAP. CER 1000 PF 50V +/-10% B  | 1             | C1020      |         |
| 26-EBP102-KBX | CAP. CER 1000 PF 50V +/-10% B  | 1             | C1021      |         |
| 26-EBP102-KBX | CAP. CER 1000 PF 50V +/-10% B  | 1             | C1041      |         |
| 26-EBP102-KBX | CAP. CER 1000 PF 50V +/-10% B  | 1             | C1040      |         |

| Item No.      | Description                     | Quantity Req. | Designator | Remarks                 |
|---------------|---------------------------------|---------------|------------|-------------------------|
| 26-EBP103-ZFX | CAP. CER 0.01UF 50V +80/-20% F  | 1             | C1031      |                         |
| 26-EBP103-ZFX | CAP. CER 0.01UF 50V +80/-20% F  | 1             | C1032      |                         |
| 26-EBP103-ZFX | CAP. CER 0.01UF 50V +80/-20% F  | 1             | C1033      |                         |
| 26-EBP103-ZFX | CAP. CER 0.01UF 50V +80/-20% F  | 1             | C1034      |                         |
| 26-EBP152-KBX | CAP. CER 1500pF 50V +/-10% B    | 1             | C1012      |                         |
| 26-EBP220-JCX | CAP. CER 22PF 50V +/-5% CH      | 1             | C1035      |                         |
| 26-EBP220-JCX | CAP. CER 22PF 50V +/-5% CH      | 1             | C1036      |                         |
| 26-EBP471-JCX | CAP. CER 470PF 50V +/-5% CH     | 1             | C1025      |                         |
| 26-EBP560-JZX | CAP. CER 56PF 50V +/-5% SL TUBE | 1             | C1004      |                         |
| 26-EBP560-JZX | CAP. CER 56PF 50V +/-5% SL TUBE | 1             | C1005      |                         |
| 27-MBC104-JOX | CAP. M.P.E 0.1 UF 63V +/-5%     | 1             | C1006      |                         |
| 27-MBC104-JOX | CAP. M.P.E 0.1 UF 63V +/-5%     | 1             | C1008      |                         |
| 27-MBC104-JOX | CAP. M.P.E 0.1 UF 63V +/-5%     | 1             | C1011      |                         |
| 27-MBC104-JOX | CAP. M.P.E 0.1 UF 63V +/-5%     | 1             | C1037      |                         |
| 27-MBC104-JOX | CAP. M.P.E 0.1 UF 63V +/-5%     | 1             | C1043      |                         |
| 27-MBC474-JOX | CAP. M.P.E 0.47UF 63V +/-5%     | 1             | C1039      |                         |
| 34-R220J2-OEX | COIL PL - 22 UH +/-5%           | 1             | L1001      |                         |
| 34-R220J2-OEX | COIL PL - 22 UH +/-5%           | 1             | L1002      |                         |
| 40-2111SG-MPD | MPS BD                          | 1             |            |                         |
| 41-WJ0065-B00 | WIRE BARE JUMPER 6.5MM          | 1             | J1003      |                         |
| 41-WJ0065-B00 | WIRE BARE JUMPER 6.5MM          | 1             | J1002      |                         |
| 41-WJ0065-B00 | WIRE BARE JUMPER 6.5MM          | 1             | J1006      |                         |
| 41-WJ0090-B00 | WIRE BARE JUMPER 9MM            | 1             | J1005      |                         |
| 41-WJ0095-B00 | WIRE BARE JUMPER 9.5MM          | 1             | J1001      |                         |
| 41-WJ0095-B00 | WIRE BARE JUMPER 9.5MM          | 1             | J1004      |                         |
| 41-WJ0095-B00 | WIRE BARE JUMPER 9.5MM          | 1             | J1007      |                         |
| 45-FIL4M5-0Y1 | CERAMIC FILTER SFSH4.5MDB       | 1             | X1002      |                         |
| 45-OSC18M-4Y0 | CRYSTAL 18.432M                 | 1             | X1001      |                         |
| 46-21550W-09X | HEADER *9 TS9B-SQ-1             | 1             |            | P1001 FOR M.BD P2 - P10 |
| 46-29004H-05X | HS 5P24 F/W 200 TJC3-5Y/SCN-5Y  | 1             |            | P1002 FOR M.BD P903     |
| 46-33079W-03X | PIN BASE *3 TJC3-3A             | 1             |            | P1003 FOR SIDE AV BD    |



| Item No.      | Description                   | Quantity Req. | Designator | Remarks |
|---------------|-------------------------------|---------------|------------|---------|
| 67-257870-1T0 | BRACKET 1F BD                 | 1             |            |         |
| 67-257870-2T0 | BRACKET 1F BD                 | 1             |            |         |
| 08-0A21SG-PWY |                               | 1             |            |         |
| 10-0FR104-FBX | DIODE FR104 (FAST RECTIFIER)  | 1             | D833       |         |
| 10-0FR104-FBX | DIODE FR104 (FAST RECTIFIER)  | 1             | D802       |         |
| 10-ORL255-EBX | DIODE RL255 (POWER RECTIFIER) | 1             | D815       |         |
| 10-ORL255-EBX | DIODE RL255 (POWER RECTIFIER) | 1             | D816       |         |
| 10-ORL255-EBX | DIODE RL255 (POWER RECTIFIER) | 1             | D817       |         |
| 10-ORL255-EBX | DIODE RL255 (POWER RECTIFIER) | 1             | D818       |         |
| 10-ORU3YX-FOX | DIODE RU3YX (FAST RECTIFIER)  | 1             | D830       |         |
| 10-1N4148-ABX | DIODE 1N4148 (SWITCHING)      | 1             | D805       |         |
| 10-1SS136-ABX | DIODE 1SS136                  | 1             | D804       |         |
| 10-1SS136-ABX | DIODE 1SS136                  | 1             | D835       |         |
| 10-79C8V2-DBX | DIODE ZENER 8V2 1/2W 5%       | 1             | D839       |         |
| 10-HER108-FBX | DIODE HER108                  | 1             | D806       |         |
| 10-HS16VC-DBX | DIODE 500mW 16HSC             | 1             | D838       |         |
| 10-HS6V2B-DBX | DIODE 6V2 500mW               | 1             | D840       |         |
| 11-SC1815-YBX | TRANSISTOR 2SC1815Y           | 1             | Q832       |         |
| 11-SC1815-YBX | TRANSISTOR 2SC1815Y           | 1             | Q831       |         |
| 11-SC2688-LAX | TRANSISTOR 2SC2688L (NPN)     | 1             | Q830       |         |
| 11-SK2996-OAX | TRANSISTOR 2SK2996 (MOS)      | 1             | Q801       |         |
| 13-OHPC92-2CP | PHOTO COUPLER HPC922-C        | 1             | IC802      |         |
| 13-44608P-40P | IC MC44608P40                 | 1             | IC801      |         |
| 18-CB0102-JNX | RES. C.F. 1K OHM 1/6W +/-5%   | 1             | R809       |         |
| 18-CB0103-JNX | RES. C.F. 10K OHM 1/6W +/-5%  | 1             | R844       |         |
| 18-CB0183-JNX | RES. C.F. 18k OHM 1/6W +/-5%  | 1             | R838       |         |
| 18-CB0332-JNX | RES. C.F. 3.3k OHM 1/6W +/-5% | 1             | R834       |         |
| 18-CB0392-JNX | RES. C.F. 3.9K OHM 1/6W +/-5% | 1             | R807       |         |
| 18-CB0472-JNX | RES. C.F. 4.7k OHM 1/6W +/-5% | 1             | R806       |         |
| 18-CB0682-JNX | RES. C.F. 6.8K OHM 1/6W +/-5% | 1             | R850       |         |
| 18-CD0100-JNX | RES. C.F. 10 OHM 1/4W +/-5%   | 1             | R851       |         |

| Item No.       | Description                       | Quantity Req. | Designator | Remarks |
|----------------|-----------------------------------|---------------|------------|---------|
| 18-CD0220-JNX  | RES. C.F. 22 OHM 1/4W +/-5%       | 1             | R811A      |         |
| 18-CD0221-JNX  | RES. C.F. 220 OHM 1/4W +/-5%      | 1             | R833       |         |
| 18-CD0392-JNX  | RES. C.F. 3.9K OHM 1/4W +/-5%     | 1             | R835       |         |
| 18-CD0471-JNX  | RES. C.F. 470 OHM 1/4W +/-5%      | 1             | R811       |         |
| 18-CE0479-JNX  | RES. C.F. 4.7 OHM 1/2W +/-5%      | 1             | R832       |         |
| 18-CE0563-JNX  | RES. C.F. 56k OHM 1/2W +/-5%      | 1             | R831       |         |
| 18-DD0104-FNX  | RES. M.F. 0.1M OHM 1/4W +/-1%     | 1             | R804       |         |
| 18-DD0912-FNX  | RES. M.F. 9.1K OHM 1/4W +/-1%     | 1             | R804A      |         |
| 18-FG0333-JHX  | RES. M.O. 33K OHM 2W +/-5%        | 1             | R837       |         |
| 18-GJ0103-KUX1 | RES.C.C.5W 10KOHM +/-10%          | 1             | R836       |         |
| 18-GJ0223-KUX1 | RES.C.C.5W 22KOHM +/-10           | 1             | R808       |         |
| 18-KE0105-JN3  | RES. H.VOLT. CC 1M OHM 1/2W +/-5% | 1             | R802       |         |
| 18-KF0825-JH3  | RES. H.VOLT.CC 8.2M OHM 1W +/-5%  | 1             | R812       |         |
| 18-RG0228-JHX  | RES. WIRE ROUND 0.22 OHM 2W +/-5% | 1             | R810       |         |
| 20-TR103H-5CX  | TRIMMER B10K HORIZ TYPE           | 1             | VR830      |         |
| 22-NTC479-XX0  | NTC 4.7 OHM +/-18% NTC4.7D2-14    | 1             | RT802      |         |
| 22-PTC200-XX1  | PTC 20 OHM +/-20%                 | 1             | RT801      |         |
| 25-343260-M1X  | CAP. ELEC                         | 1             | C832       |         |
| 25-BCA102-M1X  | CAP. ELEC 1000 UF 16V +/-20%      | 1             | C849       |         |
| 25-BCB100-M1X  | CAP. ELEC 10 UF 16V +/-20%        | 1             | C812       |         |
| 25-BCB470-M1X  | CAP. ELEC 47 UF 16V +/-20%        | 1             | C845       |         |
| 25-BJG101-M1X  | CAP. ELEC 100 UF 160V +/-20%      | 1             | C835       |         |
| 25-BMJ221-M1X  | CAP. ELEC 220 UF 400V +/-20%      | 1             | C806       |         |
| 26-ABC101-JZX  | CAP. CER 100 PF 50V +/-5% SL      | 1             | C814       |         |
| 26-ABC104-ZFX  | CAP. CER 0.1 UF 50V +80-20% F     | 1             | C813       |         |
| 26-ABC104-ZFX  | CAP. CER 0.1 UF 50V +80-20% F     | 1             | C831       |         |
| 26-ABC104-ZFX  | CAP. CER 0.1 UF 50V +80-20% F     | 1             | C842       |         |
| 26-ABC221-JZX  | CAP. CER 220 PF 50V +/-5% SL      | 1             | C841       |         |
| 26-ABC471-JZX  | CAP. CER 470 PF 50V +/-5% SL      | 1             | C851       |         |
| 26-AGK221-KRX  | CAP. CER 220 PF 250V +/-10%       | 1             | C830       |         |
| 26-AIM103-KBX  | CAP. CER 0.01UF 500V +/-10% B     | 1             | C834       |         |

| Item No.      | Description                    | Quantity Req. | Designator | Remarks  |
|---------------|--------------------------------|---------------|------------|----------|
| 26-AIM103-KBX | CAP. CER 0.01UF 500V +/-10% B  | 1             | C805       |          |
| 26-AMK102-KRX | CAP. CER 1000 pF 2KV +/-10% R  | 1             | C815       |          |
| 26-APK222-ME4 | CAP. CER 2200PF 400VAC+/-20% E | 1             | C816       |          |
| 26-APK471-KBX | CAP. CER 470PF 400VAC +/-10% B | 1             | C803       |          |
| 26-APK471-KBX | CAP. CER 470PF 400VAC +/-10% B | 1             | C804       |          |
| 26-AQK472-ZFX | CAP. CER 4700PF 250VAC+80-20%F | 1             | C807       |          |
| 26-AQK472-ZFX | CAP. CER 4700PF 250VAC+80-20%F | 1             | C808       |          |
| 26-EBP102-KBX | CAP. CER 1000 PF 50V +/-10% B  | 1             | C848       |          |
| 26-EBP102-KBX | CAP. CER 1000 PF 50V +/-10% B  | 1             | C804A      |          |
| 26-EBP103-ZFX | CAP. CER 0.01UF 50V +80/-20% F | 1             | C844       |          |
| 27-AQT224-MVH | CAP. M.PP 0.22 UF 275VAC 20%   | 1             | C801       |          |
| 27-MBC104-JOX | CAP. M.P.E 0.1 UF 63V +/-5%    | 1             | C850       |          |
| 27-RJP472-JOX | CAP. PP 4700 PF 630V +/-5%     | 1             | C809       |          |
| 34-R100K2-1BX | COIL CHOKE 10 UH +/-10%        | 1             | L843       |          |
| 34-R101K2-1BX | COIL CHOKE 100 UH +/-10%       | 1             | L804       |          |
| 35-139730-00X | FERR. BEAD BF60                | 2             |            | FOR D830 |
| 35-139730-00X | FERR. BEAD BF60                | 2             |            | FOR D806 |
| 35-139730-00X | FERR. BEAD BF60                | 2             |            | FOR D831 |
| 35-139730-00X | FERR. BEAD BF60                | 2             |            | FOR D833 |
| 36-TRF110-XX0 | TRANSFORMER                    | 1             | T803       |          |
| 41-WJ0075-B00 | WIRE BARE JUMPER 7.5MM         | 1             | J809       |          |
| 41-WJ0075-B00 | WIRE BARE JUMPER 7.5MM         | 1             | D838A      |          |
| 41-WJ0075-B00 | WIRE BARE JUMPER 7.5MM         | 1             | J821       |          |
| 41-WJ0085-B00 | WIRE BARE JUMPER 8.5MM         | 1             | J812       |          |
| 41-WJ0090-B00 | WIRE BARE JUMPER 9MM           | 1             | J805       |          |
| 41-WJ0100-B00 | WIRE BARE JUMPER 10MM          | 1             | J820       |          |
| 41-WJ0100-B00 | WIRE BARE JUMPER 10MM          | 1             | J822       |          |
| 41-WJ0100-B00 | WIRE BARE JUMPER 10MM          | 1             | R807A      |          |
| 41-WJ0105-B00 | WIRE BARE JUMPER 10.5MM        | 1             | J824       |          |
| 41-WJ0115-B00 | WIRE BARE JUMPER 11.5MM        | 1             | J832       |          |
| 41-WJ0120-B00 | WIRE BARE JUMPER 12MM          | 1             | J823       |          |

| Item No.      | Description                   | Quantity Req. | Designator | Remarks                          |
|---------------|-------------------------------|---------------|------------|----------------------------------|
| 41-WJ0125-B00 | WIRE BARE JUMPER 12.5MM       | 1             | J804       |                                  |
| 41-WJ0135-B00 | WIRE BARE JUMPER 13.5MM       | 1             | J833       |                                  |
| 41-WJ0150-B00 | WIRE BARE JUMPER 15MM         | 1             | J826       |                                  |
| 41-WJ0150-B00 | WIRE BARE JUMPER 15MM         | 1             | J802       |                                  |
| 41-WJ0160-B00 | WIRE BARE JUMPER 16MM         | 1             | J825       |                                  |
| 41-WJ0165-B00 | WIRE BARE JUMPER 16.5MM       | 1             | J831       |                                  |
| 41-WJ0175-B00 | WIRE BARE JUMPER 17.5MM       | 1             | J807       |                                  |
| 41-WJ0190-B00 | WIRE BARE JUMPER 19MM         | 1             | J811       |                                  |
| 41-WJ0195-B00 | WIRE BARE JUMPER 19.5MM       | 1             | J828       |                                  |
| 41-WJ0195-B00 | WIRE BARE JUMPER 19.5MM       | 1             | J829       |                                  |
| 41-WJ0200-B00 | WIRE BARE JUMPER 20MM         | 1             | J830       |                                  |
| 46-10962W-02X | PIN BASE *2 TJC2-2A           | 1             | P801       |                                  |
| 64-B30100-104 | M/C SCREW B 3 X 10            | 1             |            | FOR Q801                         |
| 66-20516X-0B0 | FUSE HOLDER                   | 2             |            | FOR FUSE                         |
| 66-343730-0B0 | HOLLOW RIVET 1.6X3.0XL3.2     | 2             |            | FOR D817                         |
| 66-343730-0B0 | HOLLOW RIVET 1.6X3.0XL3.2     | 4             |            | FOR T803                         |
| 66-343730-0B0 | HOLLOW RIVET 1.6X3.0XL3.2     | 2             |            | FOR D816                         |
| 66-343730-0B0 | HOLLOW RIVET 1.6X3.0XL3.2     | 4             |            | FOR T801                         |
| 66-343730-0B0 | HOLLOW RIVET 1.6X3.0XL3.2     | 2             |            | FOR D815                         |
| 66-343730-0B0 | HOLLOW RIVET 1.6X3.0XL3.2     | 3             |            | FOR RT801                        |
| 66-343730-0B0 | HOLLOW RIVET 1.6X3.0XL3.2     | 10            |            | FOR C835, C801, L804, D831, D830 |
| 66-343730-0B0 | HOLLOW RIVET 1.6X3.0XL3.2     | 2             |            | FOR D818                         |
| 67-H35984-5A0 | HEAT SINK                     | 1             |            | FOR Q801                         |
| 71-DYP000-WX1 | LABEL                         | 1             |            | STICK ON HEAT SINK               |
| 10-00RU3C-FOX | DIODE RU3C (FAST RECTIFIER)   | 1             | D831       |                                  |
| 36-LIF022-AX0 | LINE FILTER                   | 1             | T801       |                                  |
| 41-WJ0050-B00 | WIRE BARE JUMPER 5MM          | 1             | R820       |                                  |
| 41-WJ0050-B00 | WIRE BARE JUMPER 5MM          | 1             | R821       |                                  |
| 41-WJ0050-B00 | WIRE BARE JUMPER 5MM          | 1             | R822       |                                  |
| 26-AMK102-KRX | CAP. CER 1000 pF 2KV +/-10% R | 1             | C833       |                                  |
| 25-BDA102-M1X | CAP. ELEC 1000 UF 25V +/-20%  | 1             | C843       |                                  |

| Item No.       | Description                       | Quantity Req. | Designator | Remarks                    |
|----------------|-----------------------------------|---------------|------------|----------------------------|
| 66-343740-OB0  | HOLLOW RIVET (2.3mmx4.0mmx3.5mm)  | 8             |            | FOR R808, R836, C806, P801 |
| 08-0A21SG-SVY  |                                   | 1             |            |                            |
| 11-C124ES-OBX  | TRANSISTOR PDT C124ES (NPN)       | 1             | Q903       |                            |
| 18-CB0103-JNX  | RES. C.F. 10K OHM 1/6W +/-5%      | 1             | R921       |                            |
| 18-CB0103-JNX  | RES. C.F. 10K OHM 1/6W +/-5%      | 1             | R914       |                            |
| 26-EBP102-KBX  | CAP. CER 1000 PF 50V +/-10% B     | 1             | C914       |                            |
| 41-WJ0075-B00  | WIRE BARE JUMPER 7.5MM            | 1             | J902       |                            |
| 47-SV1002-XX0  | Y/C SOCKET VERTICAL TYPE          | 1             | P902       |                            |
| 08-2188SG-AG0  | ASS'Y - AG PACKING                | 1             |            |                            |
| 44-21RFLW-TS1A | CRT A51ELD032X006                 | 0             |            |                            |
| 58-2188MP-OUI  | PLATE MODEL NO.                   | 0             |            |                            |
| 72-2188SG-E26  | OPERATION MANUAL                  | 0             |            |                            |
| 75-2180LL-CC0  | POLYFOAM (LL)                     | 0             |            |                            |
| 75-2180LR-CC0  | POLYFOAM (LR)                     | 0             |            |                            |
| 75-2180UL-CC0  | POLYFOAM (UL)                     | 0             |            |                            |
| 75-2180UR-CC0  | POLYFOAM (UR)                     | 0             |            |                            |
| 75-326000-C00  | POLYFOAM PAD                      | 0             |            |                            |
| 76-02180G-OAT  | CARTON BOX                        | 0             |            |                            |
| 08-2188SG-FC1  | ASS'Y - FRONT CABINET             | 1             |            |                            |
| 02-GND021-XX0  | ASS'Y - CRT GND WIRE&HOUSE        | 1             |            | FOR CRT GROUNDING          |
| 36-DEG210-BX3  | DEGAUSSING COIL 2500mm            | 1             |            |                            |
| 42-61316D-XX1  | SPEAKER 16 OHM 5W (57MMX125MM)    | 1             | W601       |                            |
| 42-61316D-XX1  | SPEAKER 16 OHM 5W (57MMX125MM)    | 1             | W602       |                            |
| 46-27250H-02X  | HS 2P24 450/5 F/W TJC3-02H        | 1             |            | P602H FOR M. BD P602       |
| 46-27688H-04X  | HS 4P A/B 400/13 RBGW TJC1/4Y     | 1             |            | P401H FOR D.Y COIL         |
| 46-37144H-02X  | HS 2P 2468#22 450mm S11-2Y/7mm    | 1             |            | P601H FOR M. BD P601       |
| 54-113970-OU0  | PVC TUBE #5 L=ROLL                | 0.32          |            | FOR L & R SPEAKING WIRE    |
| 54-114000-OOX  | FELT TAPE (150mmX19mmX0.3mm)      | 4             |            |                            |
| 54-205140-000  | SPACER CRT MOUNTING T=2MM         | 4             |            |                            |
| 54-314740-0X0  | CRT FIBRE SHEET (22mmX22mmX0.8mm) | 4             |            |                            |
| 54-347230-000  | SPONGE (3MMX3MMX280MM)            | 2             |            | STICK ON SPK               |

| Item No.      | Description                           | Quantity Req. | Designator | Remarks                      |
|---------------|---------------------------------------|---------------|------------|------------------------------|
| 55-2180MC-3CN | MIDDLE CABINET                        | 1             |            |                              |
| 55-2188FC-OCN | FRONT CABINET                         | 1             |            |                              |
| 56-2180FB-OHA | PHSH BUTTON                           | 1             |            |                              |
| 56-2180LS-OHC | LENS - SENSOR & LED                   | 1             |            |                              |
| 56-2180PK-OHA | POWER KNOB                            | 1             |            |                              |
| 56-2188SL-OHN |                                       | 1             |            |                              |
| 56-2188SR-OHN |                                       | 1             |            |                              |
| 57-10654X-00F | cable ties (2.5mmX95mm)               | 10            |            |                              |
| 58-406760-1UI | INLAY                                 | 1             |            |                              |
| 59-130460-00X | RUBBER PAD (25mmX7mm)                 | 2             |            | STICK ON F. CAB.(FOOTING)    |
| 59-312160-000 | SPEAKER RUBBER CUSHION                | 8             |            | MTG. SPEAKER                 |
| 62-216340-0UN | HOLDER POWER CORD HIPS-KINGFA 113(V0) | 1             |            |                              |
| 62-262660-OHN | POWER SW.ADAPTER                      | 1             |            |                              |
| 62-345690-1UN | ASSISTANT RAIL HIPS-KINGFA 113 (V0)   | 1             |            |                              |
| 63-B30080-BT4 | S/T SCREW B 3 X 8 BT                  | 2             |            | MTG SIDE AV BOARD            |
| 63-B30100-BT4 | S/T SCREW B 3 X 10 BT                 | 18            |            | MTG M. CAB. & F.CAB          |
| 63-B40150-AB4 | S/T SCREW B 4 X 15 AB                 | 20            |            | MTG CRT & MIDDLE CAB.        |
| 63-W30100-AB4 | S/T SCREW W 3 X 10 AB                 | 2             |            | MTG M.BD TRACK & F. CAB.     |
| 63-W30100-AB4 | S/T SCREW W 3 X 10 AB                 | 3             |            | MG PUSH BUTTON & MIDDLE CAB. |
| 63-W30100-AB4 | S/T SCREW W 3 X 10 AB                 | 1             |            | MTG LENS & MIDDLE CAB.       |
| 63-W30175-HS4 | S/T SCREW W 3 X 17.5 BT               | 8             |            | MTG SPK & MIDDLE CAB.        |
| 65-A60180-20E | EXT. TOOTH WASHTER 6 X 18 X 2         | 4             |            | FOR CRT                      |
| 65-Z60100-50E | NUT M 6                               | 4             |            | FOR CRT                      |
| 67-325570-0E0 | CRT METAL MTG                         | 4             |            |                              |
| 67-X12668-0E0 | SPRING CRT 6mmX40mmX0.5mm             | 1             |            |                              |
| 67-X24283-0E0 | SPING POWER KNOB                      | 1             |            |                              |
| 08-2188SG-0T1 | ASS'Y - OTHER PARTS                   | 1             |            |                              |
| 02-IRRO01-XX1 | IR RECEIVER MODULE HRM380017          | 1             | IR001      |                              |
| 07-457FF5-NX7 | ALPS FS TUNER TEDH9-249A              | 1             | TU101      |                              |
| 11-C124ES-0BX | TRANSISTOR PDTC124ES (NPN)            | 1             | Q006       |                              |
| 13-000040-53P | IC 4053 (ANALOG SW)                   | 1             | IC901      |                              |

| Item No.        | Description                    | Quantity Req. | Designator | Remarks |
|-----------------|--------------------------------|---------------|------------|---------|
| 13-A21V01-TOP   | MCU 8823KRNG(TCL-A21V01-T0)    | 1             | IC201      |         |
| 14-LED05R-XX1   | LED RED FB205                  | 1             | D051       |         |
| 18-CB0103-JNX   | RES. C.F. 10K OHM 1/6W +/-5%   | 1             | R010       |         |
| 18-CB0103-JNX   | RES. C.F. 10K OHM 1/6W +/-5%   | 1             | R025       |         |
| 18-CB0152-JNX   | RES. C.F. 1.5k OHM 1/6W +/-5%  | 1             | R020       |         |
| 18-CB0182-JNX   | RES. C.F. 1.8K OHM 1/6W +/-5%  | 1             | R021       |         |
| 18-CB0222-JNX   | RES. C.F. 2.2k OHM 1/6W +/-5%  | 1             | R016       |         |
| 18-CB0223-JNX   | RES. C.F. 22k OHM 1/6W +/-5%   | 1             | R612       |         |
| 18-CB0223-JNX   | RES. C.F. 22k OHM 1/6W +/-5%   | 1             | R613       |         |
| 18-CB0272-JNX   | RES. C.F. 2.7k OHM 1/6W +/-5%  | 1             | R022       |         |
| 18-CB0432-JNX   | RES. C.F. 4.3K OHM 1/6W +/-5%  | 1             | R023       |         |
| 18-CB0470-JNX   | RES. C.F. 47 OHM 1/6W +/-5%    | 1             | R018       |         |
| 18-CB0682-JNX   | RES. C.F. 6.8K OHM 1/6W +/-5%  | 1             | R024       |         |
| 18-CB0820-JNX   | RES. C.F. 82 OHM 1/6W +/-5%    | 1             | R929       |         |
| 18-CD0103-JNX   | RES. C.F. 10K OHM 1/4W +/-5%   | 1             | R414       |         |
| 18-EG0478-JHX   | RES. FUS. 0.47 OHM 2W +/-5%    | 1             | R420       |         |
| 18-FG0122-JHX   | RES. M.O. 1.2K OHM 2W +/-5%    | 1             | R411       |         |
| 18-FG0189-JHX   | RES. M.O. 1.8 OHM 2W +/-5%     | 1             | R309       |         |
| 25-BCB101-M1X   | CAP. ELEC 100 UF 16V +/-20%    | 1             | C921       |         |
| 25-BCB220-M1X   | CAP. ELEC 22 UF 16V +/-20%     | 1             | C015       |         |
| 25-BCB221-M1X   | CAP. ELEC 220 UF 16V +/-20%    | 1             | C009       |         |
| 26-EBP102-KBX   | CAP. CER 1000 PF 50V +/-10% B  | 1             | C306       |         |
| 27-AGQ304-JSX   | CAP. M.PP 0.3 UF 250V +/-5%    | 1             | C421       |         |
| 27-ALR123-JOX   | CAP. M PP 0.012 UF 1.6KV +/-5% | 1             | C406B      |         |
| 36-LIN500-XX1   | COIL LINEARITY 50 UH           | 1             | L412       |         |
| 36-WID400-XX2   | COIL WIDTH 40UH                | 1             | L411       |         |
| 37-SC2502-79Q0X | FLYBACK BSC25-0279Q            | 1             | T402       |         |
| 41-WJ0050-B00   | WIRE BARE JUMPER 5MM           | 1             | J025       |         |
| 41-WJ0050-B00   | WIRE BARE JUMPER 5MM           | 1             | J202       |         |
| 41-WJ0050-B00   | WIRE BARE JUMPER 5MM           | 1             | JP001      |         |
| 41-WJ0065-B00   | WIRE BARE JUMPER 6.5MM         | 1             | J023       |         |

| Item No.        | Description                      | Quantity Req. | Designator | Remarks                     |
|-----------------|----------------------------------|---------------|------------|-----------------------------|
| 41-WJ0070-B00   | WIRE BARE JUMPER 7MM             | 1             | J223       |                             |
| 41-WJ0075-B00   | WIRE BARE JUMPER 7.5MM           | 1             | J228       |                             |
| 41-WJ0075-B00   | WIRE BARE JUMPER 7.5MM           | 1             | J021       |                             |
| 41-WJ0120-B00   | WIRE BARE JUMPER 12MM            | 1             | J232       |                             |
| 41-WJ0120-B00   | WIRE BARE JUMPER 12MM            | 1             | J227       |                             |
| 45-SAWF18-590   | SAW FILTER F1859                 | 1             | Z101       |                             |
| 46-28559W-02X   | PIN BASE *2 TJC1-2A              | 1             |            | P802 FOR POWER CORD         |
| 46-33079W-02X   | PIN BASE *2 TJC3-2A              | 1             |            | P904 P3 - P4 FOR SIDE AV BD |
| 46-33079W-05X   | PIN BASE *5 TJC3-5A              | 1             |            | P903 FOR MPX BD P1002       |
| 47-RCA035-XX0   | RCA JACK AV-3.2-6W-K             | 1             | P901       |                             |
| 48-POW001-AX0   | SWITCH POWER                     | 1             | SW801      |                             |
| 48-TAC002-XX0   | TACT SWITCH                      | 1             | S001       |                             |
| 48-TAC002-XX0   | TACT SWITCH                      | 1             | S002       |                             |
| 48-TAC002-XX0   | TACT SWITCH                      | 1             | S003       |                             |
| 48-TAC002-XX0   | TACT SWITCH                      | 1             | S004       |                             |
| 48-TAC002-XX0   | TACT SWITCH                      | 1             | S005       |                             |
| 48-TAC002-XX0   | TACT SWITCH                      | 1             | S006       |                             |
| 48-TAC002-XX0   | TACT SWITCH                      | 1             | S007       |                             |
| 50-02000D-1GS1  | FUSE 2.0AT 250VAC 5mmX20mm       | 1             | F801       |                             |
| 51-DC0220-0QB01 | POWER CORD                       | 1             |            |                             |
| 62-310430-0HA   | LED HOLDER (COMMON)              | 1             |            |                             |
| 66-382330-0B7   | RIVET 2.0X3.7X3.5                | 4             |            | FOR SW801                   |
| 66-382330-0B7   | RIVET 2.0X3.7X3.5                | 2             |            | FOR P802                    |
| 08-2188SG-PAN   | ASS'Y - PACKING                  | 1             |            |                             |
| 62-377580-OHD   | SAFEGUARDING COVER PP-H1500 (HB) | 2             |            |                             |
| 74-010050-40C   | POLYBAG FOR POWER (10CMX50CM)    | 1             |            |                             |
| 74-022032-6WE   | POLYBAG (23cmX34cmX0.06mm)       | 1             |            |                             |
| 74-120120-80HAA | POLYBAG W/SUFFOCATION WARNING    | 1             |            |                             |
| 08-2188SG-RC1   | ASS'Y - REAR CABINET             | 1             |            |                             |
| 54-114000-00X   | FELT TAPE (150mmX19mmX0.3mm)     | 7             |            | STICK ON REAR CAB.          |
| 54-205140-000   | SPACER CRT MOUNTING T=2MM        | 2             |            |                             |

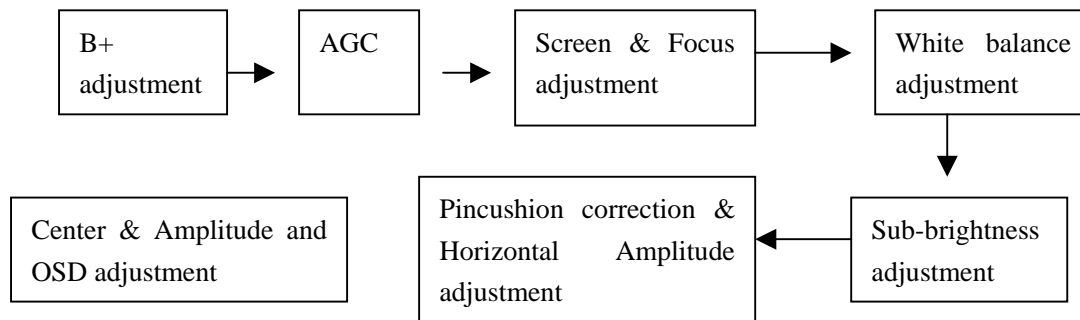


| Item No.       | Description                          | Quantity Req. | Designator | Remarks                       |
|----------------|--------------------------------------|---------------|------------|-------------------------------|
| 55-2180RC-3CN  | REAR CABINET                         | 1             |            |                               |
| 58-2180RI-BUI  | INLAY REAR AV                        | 1             |            |                               |
| 59-130460-00X  | RUBBER PAD (25mmX7mm)                | 2             |            |                               |
| 62-301490-OUN  | SUPPORTER (FOR FBT)                  | 1             |            |                               |
| 62-345700-OUN  | ATTACHMENT RAIL PIPS-KINGFA 113 (V0) | 1             |            |                               |
| 63-B40200-AB2  | S/T SCREW B 4 X 20 AB                | 4             |            | MTG MIDDLE CAB. & REAR CAB.   |
| 63-F30100-BT3  | S/T SCREW F 3 X 10 BT (BLACK)        | 2             |            | MTG RCA JACK & REAR CAB.      |
| 63-W30100-AB4  | S/T SCREW W 3 X 10 AB                | 2             |            | MTG M.BD TRACK & R. CAB.      |
| 63-W30100-AB4  | S/T SCREW W 3 X 10 AB                | 2             |            | MTG FBT SUPPORTER & REAR CAB. |
| 08-HS46F0-A123 |                                      | 1             |            |                               |
| 11-OBC337-OBX  | TRANSISTOR (NPN) BC337-40            | 1             | Q1501      |                               |
| 13-00AS12-13B  | IC AS1213B                           | 1             | IC1501     |                               |
| 14-IRE05B-XX0  | IR EMITTING DIODE TSAL6200           | 1             | D1501      |                               |
| 18-CB0221-JNX  | RES. C.F. 220 OHM 1/6W +/-5%         | 1             | R1503      |                               |
| 18-CB0229-JNX  | RES. C.F. 2.2 OHM 1/6W +/-5%         | 1             | R1501      |                               |
| 25-BCB101-M1X  | CAP. ELEC 100 UF 16V +/-20%          | 1             | C1504      |                               |
| 26-EBP101-JCX  | CAP. CER 100PF 50V +/-5% CH          | 1             | C1501      |                               |
| 26-EBP101-JCX  | CAP. CER 100PF 50V +/-5% CH          | 1             | C1502      |                               |
| 26-EBP104-ZFX  | CAP. CER 0.1UF 50V +80%/-20%         | 1             | C1503      |                               |
| 40-UOCASF-RMA  | P.C.B. REMOTE HANDSET BD             | 1             |            |                               |
| 45-COS455-KY1  | CERAMIC RESONATOR 455KHz             | 1             | X1501      |                               |
| 49-HS46F0-00X  | RUBBER PAD KEYS                      | 1             |            |                               |
| 55-HS46FB-OHA  | CASE LOWER - REMOTE HANDSET          | 1             |            |                               |
| 55-HS46FD-OHA  | DOOR BATT. - REMOTE HANDSET          | 1             |            |                               |
| 55-HS46FT-OHA  | CASE UPPER - REMOTE HANDSET          | 1             |            |                               |
| 58-HS46F3-JUI  | INLAY REMOTE HANDSET                 | 1             |            |                               |
| 63-B26060-BT2  | S/T SCREW B 2.6 X 6 BT               | 1             |            |                               |
| 67-X26968-OE2  | BATT. TERMINAL (+/-)                 | 1             |            |                               |
| 67-X31028-OE2  | SPRING - BATTERY (-)                 | 1             |            |                               |
| 67-X31029-OE2  | SPRING - BATTERY (+)                 | 1             |            |                               |
| 74-009022-60C  | POLYBAG HANDSET (9CMX22CM)           | 1             |            |                               |

| Item No.      | Description                   | Quantity Req. | Designator | Remarks |
|---------------|-------------------------------|---------------|------------|---------|
| 08-HS46F0-PAY | ASS'Y - PACKING OF IR HANDSET | 1             |            |         |
| 76-002091-OAT | CARTON BOX LWH 624X384X556MM  | 0.0031        |            |         |
| 76-326350-01A | CARTON SHEET 61X37X0.3CM      | 0.062         |            |         |

# Alignment Procedure of 2170SG Color TV

## 1. FLOWCHART OF ALIGNMENT PROCEDURE

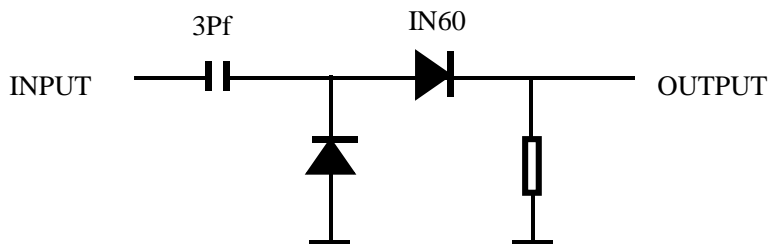


## 2 Adjustment of B+ voltage

- 1) Apply 120VAC( $\pm 5V$ ) to mains power input, and Philips standard testing pattern to RF input.
- 2) Adjust VR830 in STANDARD mode until voltage at TP2 (B+) is  $108V \pm 0.5V$ .

## 3. RF AGC adjustment

Observe monitor the collector waveform of Q101 with the probe of Oscilloscope as illustration below. Select channel 2 ( $>70dB$ ) from the antenna input. Enter D-mode, select menu6 to adjust RFAGC item until the monitor peak value to  $0.8V_{p-p}$ .



## 4. Screen & Focus voltage adjustment

Apply pattern signal in normal status, enter D-mode, press “TV/AV” button to turn off the vertical output.

Adjust the SCREEN switch on the flyback transformer to make a horizontal shining line just visible on the screen.

Turn on the vertical output, adjust the “FOCUS” on the flyback transformer to obtain the optimum focus.

## 5. White balance adjustment

- 1) Apply the black and white pattern in normal status;

### 2) Alignment of normal color temperature

Change Color Temperature to normal status

Use a color analyzer to measure the black side of the screen. By changing the value of RC, GC and BC, set the reading of the color analyzer to  $X=285$ ,  $Y=295$ .

Use a color analyzer to measure the white side of the screen. By changing the value of GD, BD, set the reading of the color analyzer to X=285, Y=295.

Separately set the brightness and contrast from min. to max., repeat the step 2 and 3 until the reading of the color analyzer is correct.

### **3)Alignment of warm color temperature**

Change Color Temperature to warm status

Use a color analyzer to measure the black side of the screen. By changing the value of RC-W, GC-W and BC-W, set the reading of the color analyzer to X=294, Y=303.

Use a color analyzer to measure the white side of the screen. By changing the value of GD-W, BD-W set the reading of the color analyzer to X=294, Y=303.

Separately set the brightness and contrast from min. to max., repeat the step 2 and 3 until the reading of the color analyzer is correct.

### **4)Alignment of cold color temperature**

Change Color Temperature to cold status

Use a color analyzer to measure the black side of the screen. By changing the value of RC-C, GC-C BC-C , set the reading of the color analyzer to X=279, Y=286.

Use a color analyzer to measure the white side of the screen. By changing the value of GD-C, BD-C, set the reading of the color analyzer to X=279, Y=286.

Separately set the brightness and contrast from min. to max., repeat the step 2 and 3 until the reading of the color analyzer is correct

Note: Provided the production line is equipped with the self- White balance adjusting equipment, white balance of M123A chassis can be adjusted automatically as following: Press “I<sup>2</sup>C BUS” button under factory mode, the TV set will adjust automatically.

## **6. Adjustment of Sub-brightness,**

Apply the Grey-scale/Color bar (NTSC signal) to the AV input, in normal status.

Select BRTC to adjust the sub-brightness, until that the 2<sup>nd</sup> dark bar of 8 level Grey scale just can be seen.

## **7. PAL picture geometric adjustment**

menu 3

HPOS6/HPOS5 ( HZ horizontal center of 60/50 HZ Source )

Menu 2

HIGH6/HIGH5(vertical amplitude)

VCEN5/VCEN6(position of vertical center)

VP60/VP50 ( vertical position )

VLIN6/VLIN5 ( vertical linearity )

VSC6/VSC5 ( V-S Correction )

## **8 initialization**

press **sound-effect** under factory mode, the set will initialize, until “**OK**” appears on the screen which means the initialization is finished. After initialization, the set will quit factory mode automatically.

## Factory settings

### D-mode:

Enter D-Mode by pressing D-Mode ON/OFF key, and then you can enter the D-mode.

### S-mode:

Enter S-Mode by pressing VOLUME DOWN key on the unit until the volume decrease to minimum level, then press the DISPLAY key on the remote handset (don't release the volume key) and you can enter S- mode.

After enter D-mode or S-mode, press **OK**, then press program up/down to select menu from menu 1 to menu 22, press **OK** to enter the menu, press program up/down to select item, press volume up/down to adjust the setting. Press D-mode again to quit factory mode.

You can also enter menu 1 to menu 19 directly by pressing digital button 1~9, 0, notebook, CAP, Display, Sleep, Calendar, System/INS, Favorite, Return, Picture.

### *Menu 1 (Remote key: "1")*

| Item | Remark                   |
|------|--------------------------|
| RC   | <b>R cut-off setting</b> |
| GC   | G cut-off setting        |
| BC   | B cut-off setting        |
| GD   | G drive setting          |
| BD   | B drive setting          |

### *Menu 2 (Remote key: "2")*

| Item  | Remark   |
|-------|--|
| HIGH5 | <b>Height (50Hz)</b>                           |
| VP50  | Vertical position (50Hz)                       |
| VLIN5 | Vertical linearity (50Hz)                      |
| VSC5  | Vertical S correction (50Hz)                   |
| VBLK5 | Vertical blanking start & stop [1C, bit 3 ~ 0] |
| VCEN5 | Vertical center (50Hz)                         |

### *Menu 2 (Remote key: "2")*

| Item  | Remark  |
|-------|---|
| HIGH6 | <b>60Hz height</b>                              |
| VP60  | Vertical position                               |
| VLIN6 | 60Hz Vertical linearity                         |
| VSC6  | Vertical S correction (60Hz)                    |
| VBLK6 | Vertical blanking start & stop [1CH, bit 3 ~ 0] |
| VCEN6 | Vertical center (60Hz)                          |

### *Menu 3 (Remote key: "3")*

| Item  | Remark                            |
|-------|-----------------------------------|
| HPOS5 | <b>Horizontal position (50Hz)</b> |

### *Menu 3 (Remote key: "3")*

| Item  | Remark                            |
|-------|-----------------------------------|
| HPOS6 | <b>Horizontal position (60Hz)</b> |

**Menu 4 (Remote key: “4”)**

| <i>Item</i> | <i>Remark</i>      |
|-------------|--------------------|
| CNTX        | Maximum contrast   |
| CNTN        | Minimum contrast   |
| BRTX        | Maximum brightness |
| BRTN        | Minimum brightness |
| COLX        | Maximum color      |
| COLN        | Minimum color      |
| TNTX        | Maximum tint level |
| TNTN        | Minimum tint level |

**Menu 5(Remote key: “5”)**

| <i>Item</i> | <i>Remark</i>                 |
|-------------|-------------------------------|
| BRTC        | <b>50% brightness</b>         |
| COLC        | <b>50% color</b>              |
| COLP        | Color level for PAL           |
| SCOL        | UV gain [06H, bit 6 ~ 4]      |
| SCNT        | Sub-contrast [06H, bit 3 ~ 0] |
| CNTC        | 50% contrast                  |
| TNTCT       | 50% tint level (TV mode)      |
| TNTCV       | 50% tint level (AV mode)      |

**Menu 6(Remote key: “6” )**

| <i>Item</i> | <i>Remark</i>                               |
|-------------|---|
| ST3         | <b>50% Sharpness (TV mode, 3.58 system)</b> |
| SV3         | 50% Sharpness (AV mode, 3.58 system)        |
| SV4         | 50% Sharpness (AV mode, other system)       |
| SVD         | 50% Sharpness (DVD mode)                    |
| ASSH        | Asymmetric sharpness [04H, bit 7 ~ 5]       |
| SHPX        | Maximum sharpness                           |
| SHPN        | Minimum sharpness                           |

**Menu 7( Remote key: “7”)**

| <i>Item</i> | <i>Remark</i>       |  |
|-------------|---------------------|--|
| MOD1        | <b>Bit 0, Bit 1</b> | under factory mode : 00,11, STD 01:IRC 10:HRC      |
|             | <b>Bit 2</b>        | STD, IRC,HRC 1: user control 0: under factory mode |
|             | <b>Bit 3</b>        | 1: forbid CATV 95/96/97                            |
|             | <b>Bit 4</b>        |  |
|             | <b>Bit 5</b>        | <b>1: have CCD</b>                                 |
|             | <b>Bit 6</b>        | <b>1:have V-CHIP</b>                               |
|             | <b>Bit 7</b>        | 1:as Monitor no TV mode                            |
| MOD2        | <b>Bit 0, Bit 1</b> | Speed of searching                                 |
|             | <b>Bit 2</b>        | High sensitivity ; 1 : yes 0:no                    |
|             | <b>Bit 3</b>        | Volume control : 1:PWM                             |
|             | <b>Bit 4</b>        | <b>AV1: 1 : yes 0:no</b>                           |
|             | <b>Bit 5</b>        | <b>AV2: 1 : yes 0:no</b>                           |
|             | <b>Bit 6</b>        | YUV: 1 : yes 0:no                                  |
|             | <b>Bit 7</b>        |  |
| MOD3        | Bit 0               |  |
|             | Bit 1               |  |
|             | Bit 2               |  |

|       |       |  |                                    |  |
|-------|-------|--|------------------------------------|--|
|       | Bit 3 |  |                                    |  |
|       | Bit 4 |  |                                    |  |
|       | Bit 5 | TV , MSP AVL: 1: yes   |                                    |  |
|       | Bit 6 | AV , MSP AVL : 1:yes   |                                    |  |
|       | Bit 7 | MONO+SAP : 1 : yes    0 : no   |                                    |  |
| OPT   | Bit 0 | When blue background off (mute pin of CPU):    0: audio mute on        1: audio mute off                                   |                                    |  |
|       | Bit 1 | When blue background off (external mute pin of CPU):<br>0: audio mute on        1: audio mute off                          |                                    |  |
|       | Bit 2 | When change channel:    0: picture mute off        1: picture mute on  |                                    |  |
|       | Bit 3 | Switch between TV and CATV or change channel in the tune menu 1: picture mute on   |                                    |  |
|       | Bit 4 | AFT –MUTE 1: ON,   |                                    |  |
|       | Bit 5 | Polarity    of Tint  |                                    |  |
|       | Bit 6 |  |                                    |  |
|       | Bit 7 |  |                                    |  |
| OPTM1 | Bit 0 | TDA98500    0:no        1:yes  | Can't be set to 1 at the same time |  |
|       | Bit 1 | MSP34xx    0:no        1:yes   |                                    |  |
|       | Bit 2 | 1: AV audio out mute when volume is zero or mute   |                                    |  |
|       | Bit 3 | 1: decreasing contrast when menu on  |                                    |  |
|       | Bit 4 | 1: OSD don't disappear automatically   |                                    |  |
|       | Bit 5 | 1:biological   |                                    |  |
|       | Bit 6 | 0: CH LOCK W/O V-CHIP  |                                    |  |
|       | Bit 7 | When turn on 0:child lock off    1:child lock on   |                                    |  |
| OPTM2 | Bit 0 |  |                                    |  |
|       | Bit 1 | Power on mode:        00: standby    01:previous   |                                    |  |
|       | Bit 2 | 10&11: force power on  |                                    |  |
|       | Bit 3 | Hotel mode 1:on    0: off  |                                    |  |
|       | Bit 4 | Power on under hotel mode :  |                                    |  |
|       | Bit 5 | 00: TV   01: Video1   02: TV2   03: Last   |                                    |  |
|       | Bit 6 | 1: under factory mode turn off the set by the remote or power off, then turn on or power on,    the set enter factory mode |                                    |  |
|       | Bit 7 | 1: D-MODE  |                                    |  |
| HDCNT |       |  |                                    |  |
| HSTOP |       |  |                                    |  |

**Menu 8 (Remote key: “8” )**

| Item     | Remark                              |
|----------|-------------------------------------|
| RFAGC    | <b>RFAGC [12H, bit 5 ~ 0]</b>       |
| BRTS     | Sub brightness for SECAM            |
| OSD      | Horizontal position of OSD          |
| OSDF     | OSD PLL DATA                        |
| CCD OSD  | Horizontal position of CCD OSD      |
| CCD OSDF | PLL DATA of CCD OSD                 |
| TXCX     | OSD intensity when maximum contrast |
| RGCN     | OSD intensity when minimum contrast |

**Menu 9(Remote key: “9”)**

| <i>Item</i> | <i>Remark</i>  |
|-------------|--|
| <b>V01</b>  | <b>Volume 1</b>  |
| V25         | Volume 25  |
| V50         | Volume 50  |
| V100        | Volume 100   |
| VOLMAX      | <b>Max volume under hotel mode</b>   |
| CURTCEN     | <b>Center of the curtain</b>   |
| VOLX        | <b>Output gain of PIN28 of TMPA8823 or MSP34x5</b>   |
| PWTM        | When use PWM to mute and no sound when changing channel, this item should be minimum as possible |

**Menu 10(Remote key: “0”)**

| <i>Item</i> | <i>Remark</i>  |  |
|-------------|----------------|--|
| MDOE4       | Bit 0          | TV Color system AUTO : 1 : yes 0 : no  |
|             | Bit 1          | TV Color system NTSC358 : 1 : yes 0 : no   |
|             | Bit 2          | TV Color system PALM : 1 : yes 0 : no  |
|             | Bit 3          | TV Color system PALN : 1 : yes 0 : no  |
|             | Bit 4          | AV Color system AUTO : 1 : yes 0 : no  |
|             | Bit 5          | AV Color system NTSC358 : 1 : yes 0 : no   |
|             | Bit 6          | AV Color system PALM : 1 : yes 0 : no  |
|             | Bit 7          | AV Color system PALN : 1 : 1 : yes 0 : no  |
| MDOE5       | Bit 0          | English: 1 : yes 0 : no  |
|             | Bit 1          | French: 1 : yes 0 : no   |
|             | Bit 2          | Portuguese: 1 : yes 0 : no   |
|             | Bit 3          | Spanish : 1 : yes 0 : no   |
|             | Bit 4          | AV Color system PAL443 : 1 : 1 : yes 0 : no  |
|             | Bit 5          | AV Color system NTSC443 : 1 : 1 : yes 0 : no   |
|             | Bit 6          | AV AUTO : 1:AUTO1(PAL443 、 NTSC358 、 NTSC443) 0:AUTO2(NTSC358、 PALM、 PALN)   |
|             | Bit 7          |  |
| MDOE6       | Bit 0          | 1:auto search function of the menu key on the front panel  |
|             | Bit 1          | 1: curtain when turn on the set  |
|             | Bit 2          | 1: curtain when turn off the set   |
|             | Bit3~ 7        | V-mute timing when changing channel(01H = 8ms) max :248ms  |
| MDOE7       | Bit 0<br>Bit 1 | When sound mode change<br>11:change to the corresponding mode and ODS display automatically<br>01: change to the corresponding mode and ODS doesn't display<br>00,10: change to MONO , ODS doesn't display ; |
|             | Bit 2          | 00 , 10 : detect BTSC and Korea stereo automatically   |
|             | Bit 3          | 01 : force BTSC 11 : force Korea stereo  |
|             | Bit 4          | FINE, 1:yes 0 : no   |
|             | Bit 5          | 50Hz block 1:yes 0 : no  |
|             | Bit 6          | 1: contrast change when power on   |



|       |                 |  |
|-------|-----------------|--|
|       | Bit 7           |  |
| MDOE8 | Bit 0           | <b>America V-CHIP standard 1 : yes 0 : no</b>        |
|       | Bit 1           | <b>Canadian V-CHIP 1 : yes 0 : no</b>                |
|       | Bit 2           | <b>UNRATED , 1 : yes 0 : no</b>                      |
|       | Bit 3           | <b>NO RATING , 1 : yes 0 : no</b>                    |
|       | Bit 4<br>~Bit 7 | <b>Time setting for curtain when turn on the set</b> |
| MDOE9 | Bit 0<br>~Bit 2 | N/A  |
|       | Bit 3           | <b>S-VIDEO ,0:parallel to AV1 1: parallel to AV2</b> |
|       | Bit 4           | <b>1:sound effect w/o mpx (MSP3465)</b>              |
|       | Bit 5<br>~Bit 7 | N/A  |

**Menu 12(Remote key: “CAP”)**

| <i>Item</i> | <i>Remark</i>           |
|-------------|-------------------------|
| OSD2        | OSD Horizontal Position |
| OSDF2       | OSD PLL DATA except     |
| PYNX        | Normal H.SYNC max       |
| PYNN        | Normal H.SYNC min       |
| PYXS        | Search H.SYNC max       |
| PYNS        | Search H.SYNC min       |

**Menu 13 (Remote key: “Display” )**

| Item | Remark       |   |
|------|--------------|---|
| CLTM | TV mode      |   |
| CLVO | Video mode   |   |
| CLVS | s-video mode |   |
|      | Bit 2 ~ 0    | YDL [15H, bit 2 ~ 0] (-40ns~240ns)                |
|      | Bit 4 ~ 3    | NTSC matrix [03H, bit 7 ~ 6] (N1,N2,DVD)          |
|      | Bit 5        | C gamma [02H, bit 7] (color gamma on/off)         |
|      | Bit 6        | P/N ID [17H, bit 4] (PAL/NTSC killer sensit.)     |
|      | Bit 7        | FID [17H, bit 3] (Killer off)                     |
| ABL  | Bit 1 ~ 0    | ABL gain [16H, bit 5 ~ 4]                         |
|      | Bit 3 ~ 2    | ABL start point [16H, bit 7 ~ 6]                  |
|      | Bit 4        | WPS [00H, bit 7]                                  |
|      | Bit 5        | OSD ABCL [16H, bit 3]                             |
| DCBS | Bit 1 ~ 0    | Black stretch [15H, bit 4 ~ 3]                    |
|      | Bit 3 ~ 2    | Y gamma [15H, bit 6 ~ 5]                          |
|      | Bit 5 ~ 4    | OSD level [16H, bit 1 ~ 0]                        |
|      | Bit 7        | Blank switch [0CH, bit 7]                         |
| FLG0 | Bit 0        | Over modulation [13H, bit 5]                      |
|      | Bit 1        | Aft window size [13H, bit 6]                      |
|      | Bit 2        | Buzz reducer [13H, bit 7]                         |
|      | Bit 3        | Audio gain switch [14H, bit 7]                    |
|      | Bit 4        |   |
|      | Bit 5        |   |
|      | Bit 6        |   |
|      | Bit 7        | 1: VCO adjust automatically when changing channel |
| FLG1 | Bit 0        | CW SW [06H, bit 7], control PIN26,                |
|      | Bit 1        | Slice level [1EH, bit 6]                          |
|      | Bit 2        | Mix gain [15H, bit 7]                             |
|      | Bit 3        | V ramp bias [1DH, bit 4]                          |

|  |              |                         |
|--|--------------|-------------------------|
|  | <b>Bit 4</b> |                         |
|  | <b>Bit 5</b> |                         |
|  | <b>Bit 6</b> |                         |
|  | <b>Bit 7</b> | SLO f0 shift(test only) |

**Menu 14(Remote key: “sleep)**

| <i>Item</i> | <i>Remark</i>   |  |
|-------------|---|--|
| HAFC        | <b>Bit 1 ~ 0</b>  | <b>AFC gain (TV mode) [1CH, bit 5 ~ 4]</b> |
|             | <b>Bit 3 ~ 2</b>  | <b>AFC gain (AV mode) [1CH, bit 5 ~ 4]</b> |
| AGCC        |   |  |
| NOIS        |   |  |
| ONTM        | V-mute timing when power on (01H = 16ms)                |  |
| NSHP        | Decreased level of sharpness when noise reduction is on |  |
| PVLVL       | X-ray protection start point (00H → 0V & FFH → 5V)      |  |
| PLMT        | (01H = 8ms)   |  |

**Menu 15 (Remote key: “Calendar”)**

| <i>Item</i> | <i>Remark</i>   |
|-------------|---|
| RC-C        | <b>R cut-off setting (for cool color temperature)</b> |
| GC-C        | G cut-off setting (for cool color temperature)        |
| BC-C        | B cut-off setting (for cool color temperature)        |
| GD-C        | G drive setting (for cool color temperature)          |
| BD-C        | B drive setting (for cool color temperature)          |

**Menu 16 (Remote key: “System/INS” )**

| <i>Item</i> | <i>Remark</i>   |
|-------------|---|
| RC-W        | <b>R cut-off setting (for warm color temperature)</b> |
| GC-W        | G cut-off setting (for warm color temperature)        |
| BC-W        | B cut-off setting (for warm color temperature)        |
| GD-W        | G drive setting (for warm color temperature)          |
| BD-W        | B drive setting (for warm color temperature)          |
| YUVGC       | YUV R cut-off   |
| YUVBC       | YUV B cut-off   |

**Menu 17 (Remote key: “FAV” )**

| <i>Item</i> | <i>Remark</i>             |
|-------------|---------------------------|
| D-COL       | <b>Dynamic color</b>      |
| D-BRI       | <b>Dynamic brightness</b> |
| D-CON       | <b>Dynamic contrast</b>   |
| D-SHP       | <b>Dynamic sharpness</b>  |

**Menu 18 (Remote key: “Return” )**

| <i>Item</i> | <i>Remark</i>              |
|-------------|----------------------------|
| S-COL       | <b>Standard color</b>      |
| S-BRI       | <b>Standard brightness</b> |
| S-CON       | <b>Standard contrast</b>   |
| S-SHP       | <b>Standard sharpness</b>  |

**Menu 19 (Remote key: “Picture” )**

| <i>Item</i> | <i>Remark</i>          |
|-------------|------------------------|
| M-COL       | <b>Mild</b> color      |
| M-BRI       | <b>Mild</b> brightness |
| M-CON       | <b>Mild</b> contrast   |
| M-SHP       | <b>Mild</b> sharpness  |

**Menu 20: no shortcut key**

| <i>Item</i> | <i>Remark</i>   |
|-------------|---|
| SEG_POINT1  | <b>Highest frequency of VHFL</b>                      |
| SEG_POINT2  | <b>Highest frequency of VHFH</b>                      |
| DATA_VL     | <b>VHFL bandswitch ( BB )</b>                         |
| DATA_VH     | <b>VHFH bandswitch ( BB )</b>                         |
| DATA_UF     | <b>UHF bandswitch ( BB )</b>                          |
| SPE_POS1    | <b>The channel number treated specially</b>           |
| SPE_DATA1   | <b>Bandswitch in which the special channel ( BB )</b> |
| SENSI_ON    |   |
| SENSI_OFF   |   |

**Menu 21: no shortcut key**

| <i>Item</i>   | <i>Remark</i>         |
|---------------|-----------------------|
| THEATER-BAS   | <b>Theater</b> bass   |
| THEATER-TRE   | <b>Theater</b> treble |
| CONCERT-BAS   | <b>Concert</b> bass   |
| CONCERT-TRE   | <b>Concert</b> treble |
| BROADCAST-BAS | <b>Brocast</b> bass   |
| BROADCAST-TRE | <b>Brocast</b> treble |

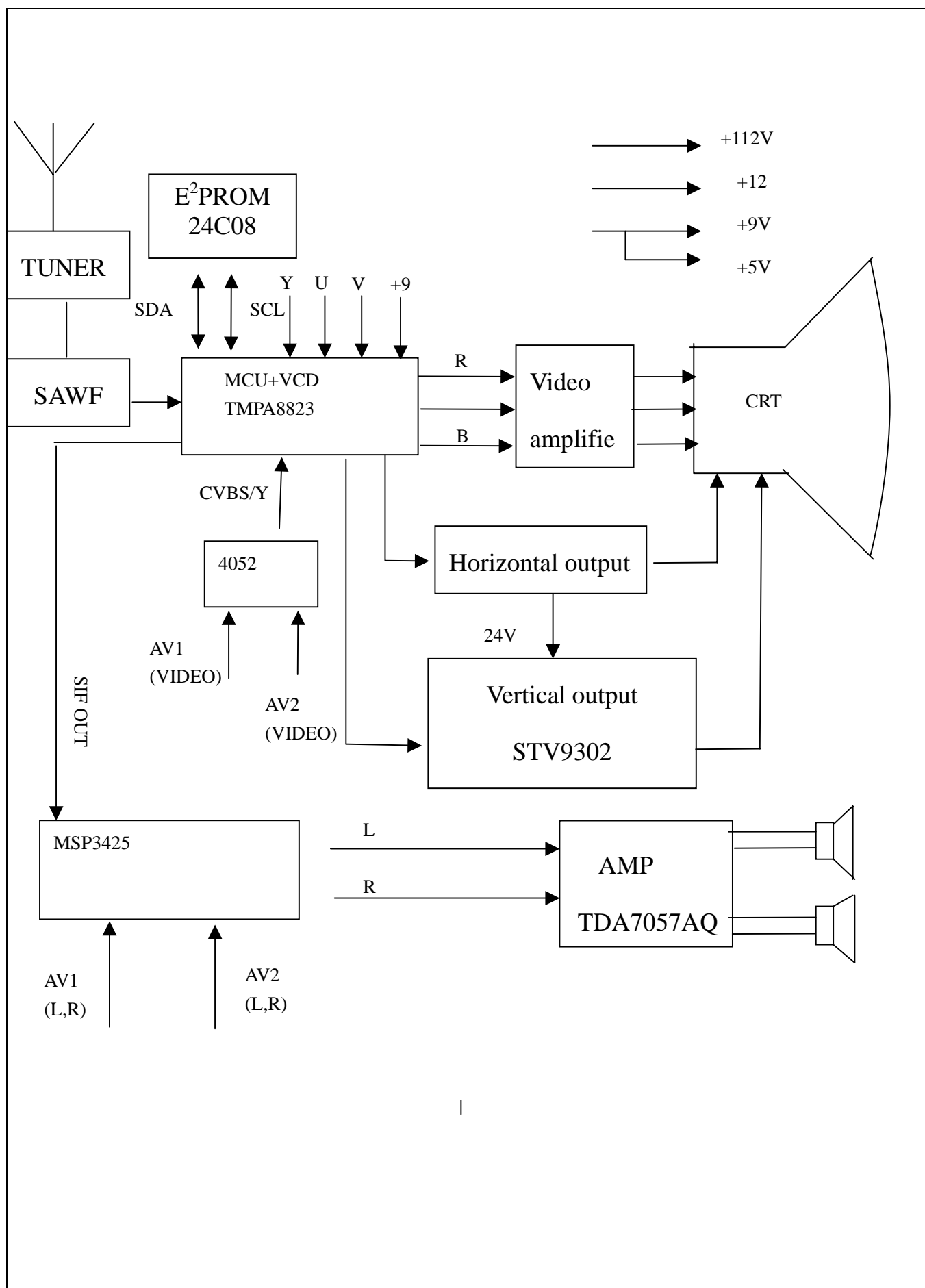
**Menu 22: no shortcut key**

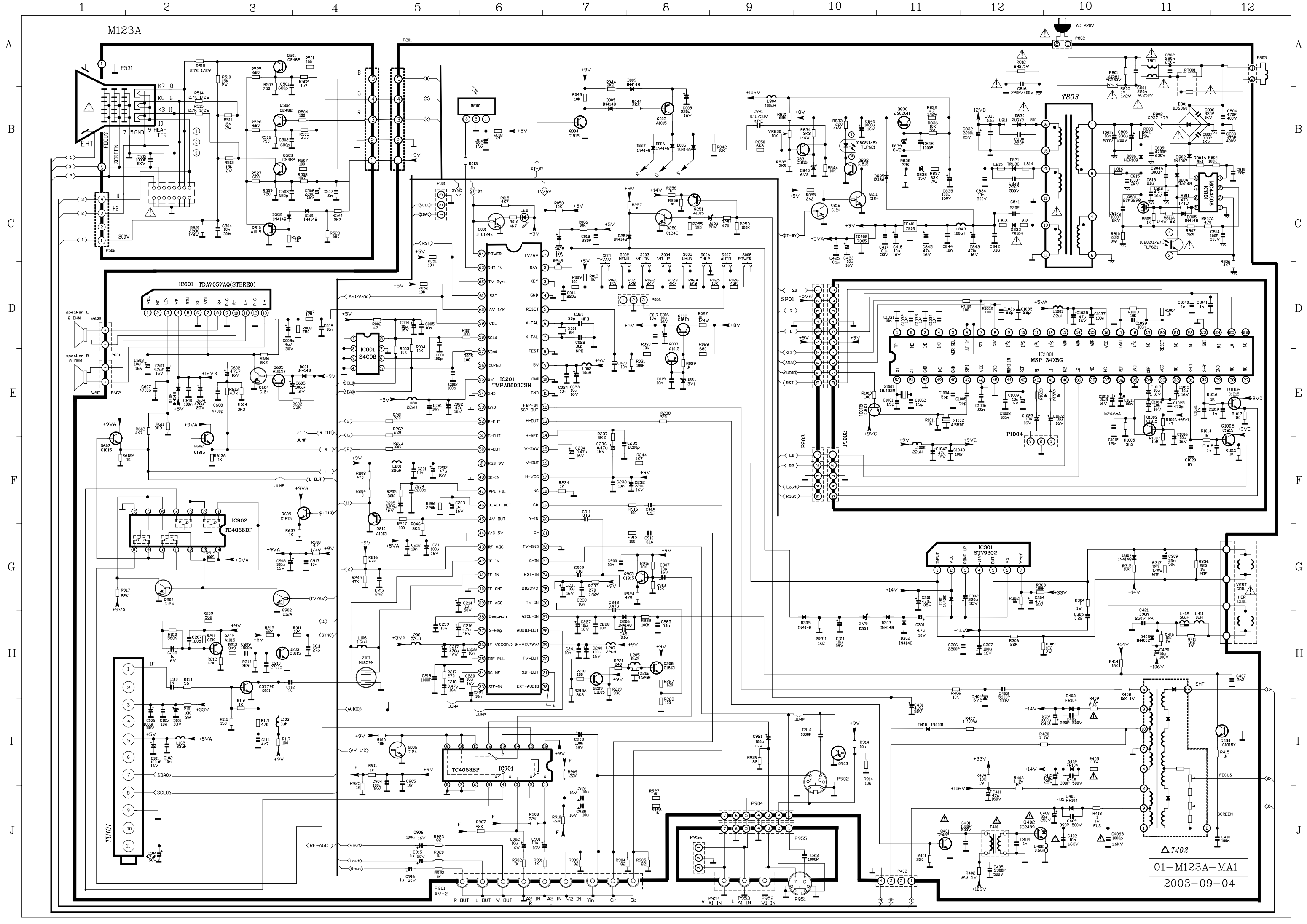
| <i>Item</i> | <i>Remark</i>         |
|-------------|-----------------------|
| VOL_MAI     | Volume Loudspeaker    |
| GATE        | <b>Carrier-Mute</b>   |
| VOL-OUT     | <b>AV output gain</b> |
| AV GAIN     | <b>AV input Gain</b>  |

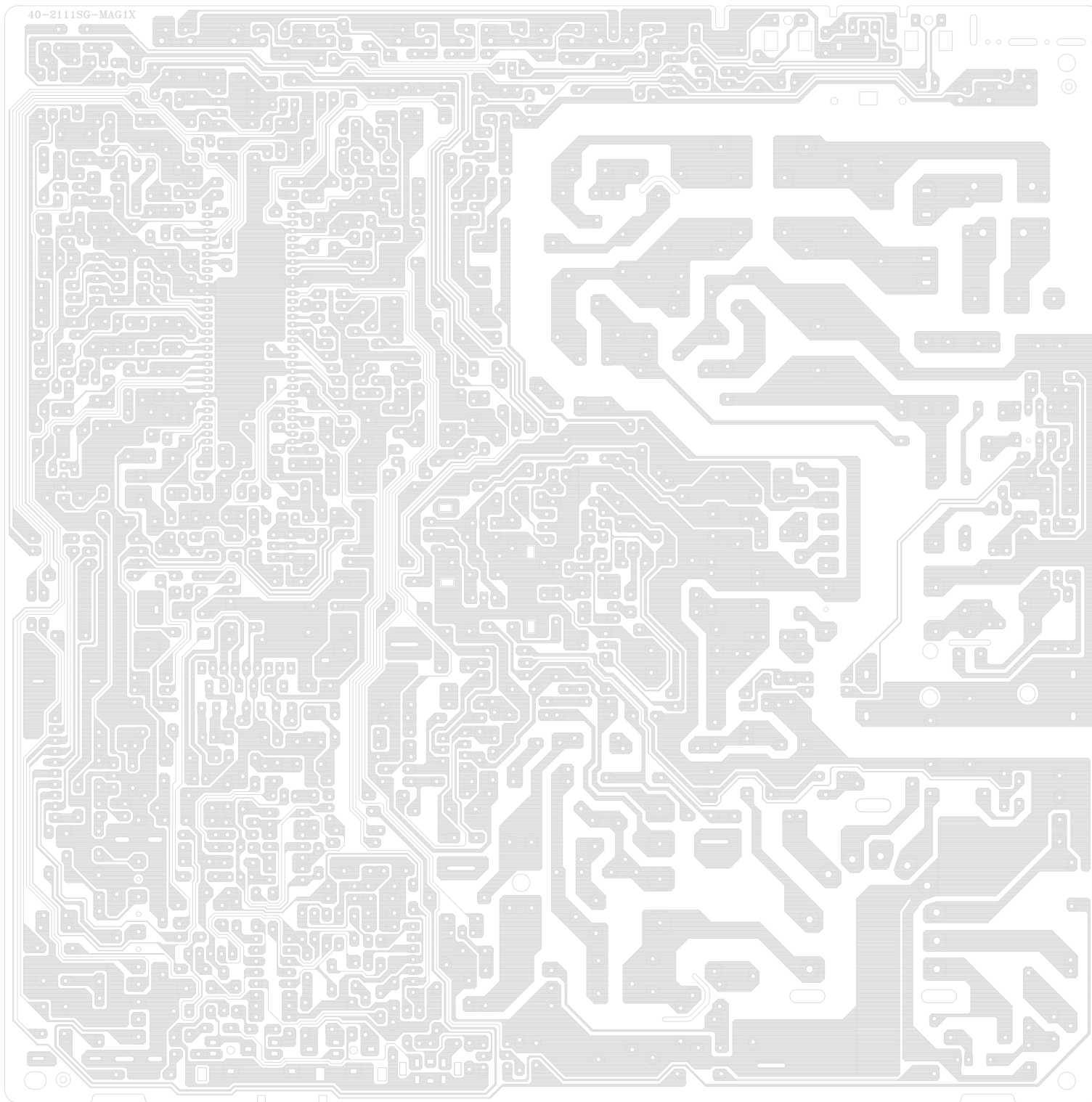
**Note:**

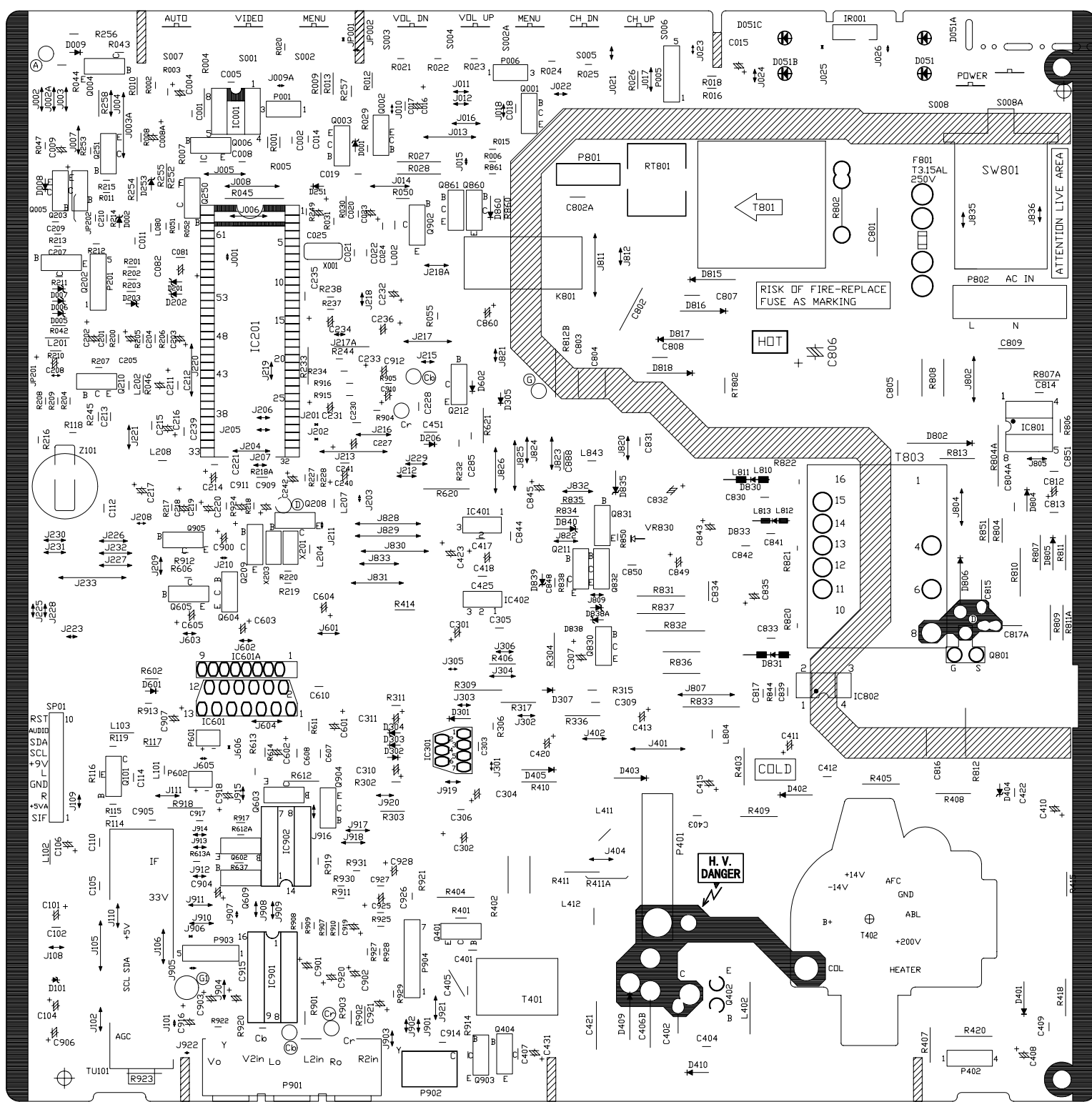
Provided the production line is equipped with the self-adjusting equipment, The adjusted item should be based on the result by such equipment.

There's difference between PAL geometric/OSD adjustment and NTSC geometric/OSD adjustment. PAL adjustment must be done before NTSC adjustment.









| 标记 | 更改内容 | 更改日期 | 签名 |
|----|------|------|----|
|    |      |      |    |
|    |      |      |    |



| 序号       | 名 称 | 物料编号   | 图 号        | 数量   | 备 注      |    |
|----------|-----|--|------------|------|----------|----|
|          |     | 投影方法  | 产品型号 21188 |      |          |    |
| 设 计      |     | 爆炸图  | WP         |      |          |    |
| 审 核      |     |  |            |      |          |    |
| 会 签      |     |  |            | 等级标记 | 数量       | 比例 |
| 标准代<br>号 |     | 一般公差<br>线性：±<br>角度：±   | 第 页        | 共 页  | 审核<br>日期 |    |