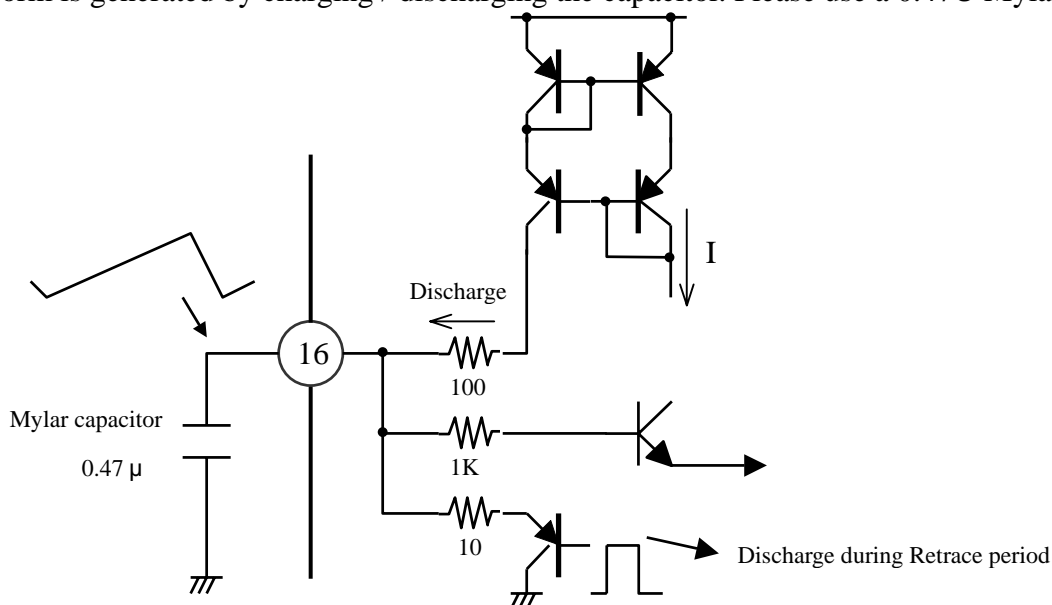


PIN 16 V RAMP OSC.Capacitor

This pin connect a capacitor, which is used to generate a ramp waveform for the reference of pin 17(Vertical Output).

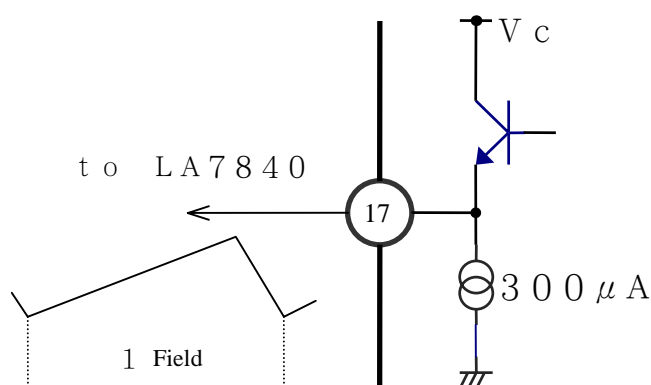
Ramp waveform is generated by charging / discharging the capacitor. Please use a 0.47U Mylar capacitor.



PIN 17 (VERTICAL OUTPUT)

This is a output pin of vertical synchronization ramp signal. We recommend using together with LA7840 serial. Below are some functions which can be control by BUS:

- V.DC : position of field (6 bit)
- V. size : size of field (7 bit)
- V. linearity : linearity (5 bit)
- V. SC : S compensation (5 bit)



The application of vertical position adjustment circuit is different depending on either using \pm dual voltage supply or single voltage supply. Please refer to technical note of LA7840/LA78040 (Vertical output IC).

PIN18 (I reference)

This is a pin for producing reference current. Use a resistor of 4.7K to connect with ground from this pin.

