

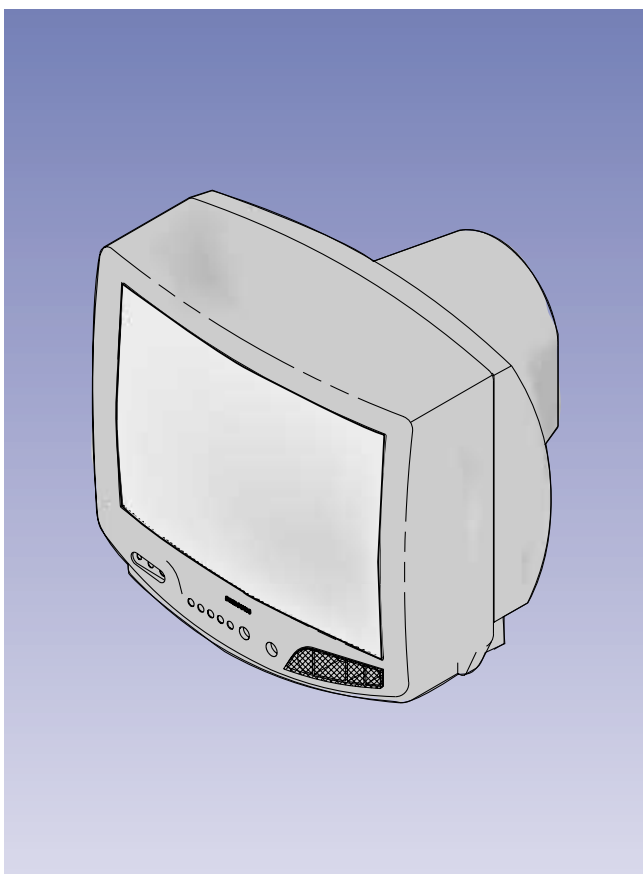
SAMSUNG

COLOR TELEVISION RECEIVER

Chassis : K15A
Model : CT21D8L6X/XTC
CT5038G6X/XAP

SERVICE Manual

COLOR TELEVISION RECEIVER



CONTENTS

1. Precautions
2. Specifications
3. Disassembly and Reassembly
4. Alignment and Adjustments
5. Troubleshooting
6. Exploded Views and Parts List
7. Electric Parts List
8. Block Diagram
9. PCB Layout
10. Wiring Diagrams
11. Schematic Diagrams

1. Precautions

Follow these safety, servicing and ESD precautions to prevent damage and protect against potential hazards such as electrical shock and X-rays.

1-1 Safety Precautions

1. Be sure that all of the built-in protective devices are replaced. Restore any missing protective shields.
2. When reinstalling the chassis and its assemblies, be sure to restore all protective devices, including: nonmetallic control knobs and compartment covers.
3. Make sure that there are no cabinet openings through which people—particularly children—might insert fingers and contact dangerous voltages. Such openings include the spacing between the picture tube and the cabinet mask, excessively wide cabinet ventilation slots, and improperly fitted back covers.

If the measured resistance is less than 1.0 megohm or greater than 5.2 megohms, an abnormality exists that must be corrected before the unit is returned to the customer.

4. Leakage Current Hot Check (Figure 1-1):
Warning: Do not use an isolation transformer during this test. Use a leakage-current tester or a metering system that complies with American National Standards Institute (ANIS C101.1, Leakage Current for Appliances), and Underwriters Laboratories (UL Publication UL1410, 59.7).
5. With the unit completely reassembled, plug the AC line cord directly into the power outlet. With the unit's AC switch first in the ON position and then OFF, measure the current between a known earth ground (metal water pipe, conduit, etc.) and all exposed metal parts, including: antennas, handle brackets, metal cabinets, screwheads and control shafts. The current measured should not exceed 0.5 milliamp. Reverse the power-plug prongs in the AC outlet and repeat the test.

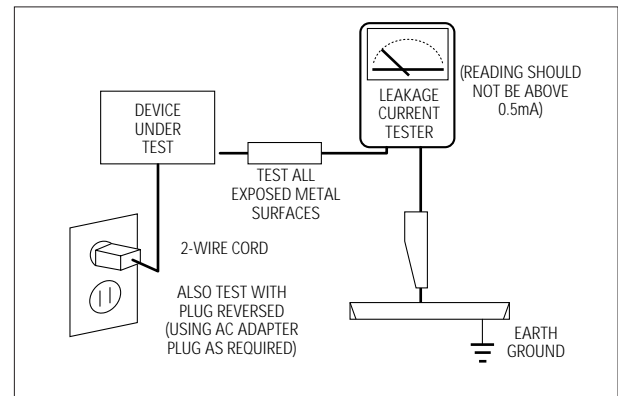


Fig. 1-1 AC Leakage Test

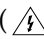

6. Antenna Cold Check:
With the unit's AC plug disconnected from the AC source, connect an electrical jumper across the two AC prongs. Connect one lead of the ohmmeter to an AC prong. Connect the other lead to the coaxial connector.
7. X-ray Limits:
The picture tube is especially designed to prohibit X-ray emissions. To ensure continued X-ray protection, replace the picture tube only with one that is the same type as the original. Carefully reinstall the picture tube shields and mounting hardware; these also provide X-ray protection.
8. High Voltage Limits:
High voltage must be measured each time servicing is done on the B+, horizontal deflection or high voltage circuits. Correct operation of the X-ray protection circuits must be reconfirmed whenever they are serviced.
(X-ray protection circuits also may be called "horizontal disable" or "hold-down".)

Heed the high voltage limits. These include the X-ray Protection Specifications Label, and the Product Safety and X-ray Warning Note on the service data schematic.

1-1 Safety Precautions (Continued)

9. High voltage is maintained within specified limits by close-tolerance, safety-related components and adjustments. If the high voltage exceeds the specified limits, check each of the special components.
10. Design Alteration Warning:
Never alter or add to the mechanical or electrical design of this unit. Example: Do not add auxiliary audio or video connectors. Such alterations might create a safety hazard. Also, any design changes or additions will void the manufacturer's warranty.
11. Hot Chassis Warning:
Some TV receiver chassis are electrically connected directly to one conductor of the AC power cord. If an isolation transformer is not used, these units may be safely serviced only if the AC power plug is inserted so that the chassis is connected to the ground side of the AC source.

To confirm that the AC power plug is inserted correctly, do the following: Using an AC voltmeter, measure the voltage between the chassis and a known earth ground. If the reading is greater than 1.0V, remove the AC power plug, reverse its polarity and reinsert. Re-measure the voltage between the chassis and ground.
12. Some TV chassis are designed to operate with 85 volts AC between chassis and ground, regardless of the AC plug polarity. These units can be safely serviced only if an isolation transformer inserted between the receiver and the power source.
13. Some TV chassis have a secondary ground system in addition to the main chassis ground. This secondary ground system is not isolated from the AC power line. The two ground systems are electrically separated by insulating material that must not be defeated or altered.
14. Components, parts and wiring that appear to have overheated or that are otherwise damaged should be replaced with parts that meet the original specifications. Always determine the cause of damage or overheating, and correct any potential hazards.
15. Observe the original lead dress, especially near the following areas: Antenna wiring, sharp edges, and especially the AC and high voltage power supplies. Always inspect for pinched, out-of-place, or frayed wiring. Do not change the spacing between components and the printed circuit board. Check the AC power cord for damage. Make sure that leads and components do not touch thermally hot parts.
16. Picture Tube Implosion Warning:
The picture tube in this receiver employs "integral implosion" protection. To ensure continued implosion protection, make sure that the replacement picture tube is the same as the original.
17. Do not remove, install or handle the picture tube without first putting on shatterproof goggles equipped with side shields. Never handle the picture tube by its neck. Some "in-line" picture tubes are equipped with a permanently attached deflection yoke; do not try to remove such "permanently attached" yokes from the picture tube.
18. Product Safety Notice:
Some electrical and mechanical parts have special safety-related characteristics which might not be obvious from visual inspection. These safety features and the protection they give might be lost if the replacement component differs from the original—even if the replacement is rated for higher voltage, wattage, etc.

Components that are critical for safety are indicated in the circuit diagram by shading, () or ().
Use replacement components that have the same ratings, especially for flame resistance and dielectric strength specifications. A replacement part that does not have the same safety characteristics as the original might create shock, fire or other hazards.

1-2 Servicing Precautions

Warning1: First read the "Safety Precautions" section of this manual. If some unforeseen circumstance creates a conflict between the servicing and safety precautions, always follow the safety precautions.

Warning2: An electrolytic capacitor installed with the wrong polarity might explode.

1. Servicing precautions are printed on the cabinet. Follow them.
2. Always unplug the unit's AC power cord from the AC power source before attempting to: (a) Remove or reinstall any component or assembly, (b) Disconnect an electrical plug or connector, (c) Connect a test component in parallel with an electrolytic capacitor.
3. Some components are raised above the printed circuit board for safety. An insulation tube or tape is sometimes used. The internal wiring is sometimes clamped to prevent contact with thermally hot components. Reinstall all such elements to their original position.
4. After servicing, always check that the screws, components and wiring have been correctly reinstalled. Make sure that the portion around the serviced part has not been damaged.
5. Check the insulation between the blades of the AC plug and accessible conductive parts (examples: metal panels, input terminals and earphone jacks).
6. Insulation Checking Procedure: Disconnect the power cord from the AC source and turn the power switch ON. Connect an insulation resistance meter (500V) to the blades of the AC plug.

The insulation resistance between each blade of the AC plug and accessible conductive parts (see above) should be greater than 1 megohm.
7. Never defeat any of the B+ voltage interlocks. Do not apply AC power to the unit (or any of its assemblies) unless all solid-state heat sinks are correctly installed.
8. Always connect a test instrument's ground lead to the instrument chassis ground before connecting the positive lead; always remove the instrument's ground lead last.

1-3 Precautions for Electrostatically Sensitive Devices (ESDs)

1. Some semiconductor ("solid state") devices are easily damaged by static electricity. Such components are called Electrostatically Sensitive Devices (ESDs); examples include integrated circuits and some field-effect transistors. The following techniques will reduce the occurrence of component damage caused by static electricity.
2. Immediately before handling any semiconductor components or assemblies, drain the electrostatic charge from your body by touching a known earth ground. Alternatively, wear a discharging wrist-strap device. (Be sure to remove it prior to applying power—this is an electric shock precaution.)
3. After removing an ESD-equipped assembly, place it on a conductive surface such as aluminum foil to prevent accumulation of electrostatic charge.
4. Do not use freon-propelled chemicals. These can generate electrical charges that damage ESDs.
5. Use only a grounded-tip soldering iron when soldering or unsoldering ESDs.
6. Use only an anti-static solder removal device. Many solder removal devices are not rated as "anti-static"; these can accumulate sufficient electrical charge to damage ESDs.
7. Do not remove a replacement ESD from its protective package until you are ready to install it. Most replacement ESDs are packaged with leads that are electrically shorted together by conductive foam, aluminum foil or other conductive materials.
8. Immediately before removing the protective material from the leads of a replacement ESD, touch the protective material to the chassis or circuit assembly into which the device will be installed.
9. Minimize body motions when handling unpackaged replacement ESDs. Motions such as brushing clothes together, or lifting a foot from a carpeted floor can generate enough static electricity to damage an ESD.

2. Specifications

2-1 Specifications

Television System	14"/20"/21" NTSC COLOR TV SIGNAL
Power Consumption	14" : 57 WATTS NOMINAL, 20" : 70 WATTS NOMINAL 21" : 75 WATTS NOMINAL,
Picture Tube	14" : A34KQV42X 20" : A48KRD82X (H) 21" : A51KQJ63X (H)
Power Requirement	AC 120V, 60Hz /AC 100 ~ 240, 50Hz, 60Hz
Operating System	REMOCON SYSTEM (SZM354ET)
Tuning Ranges	VHF CH : 2-13, UHF CH : 14-69, CABLE CH : 1,14-125
Antenna Input Impedance	75 ohm UNBALANCED TYPE FOR VHF/UHF
Intermediate Frequency	PICTURE 45.75MHz, SOUND 41.25MHz, COLOR SUB CARRIER 42.17MHz
Speaker Impedance	Single: 8 ohm 3W Dual : 8 ohm 3W x 2 Dual : 16 ohm , 3W x 2 (CT-33H1, CT-50H1)

3. Disassembly and Reassembly

3-1 Back Cover Removal

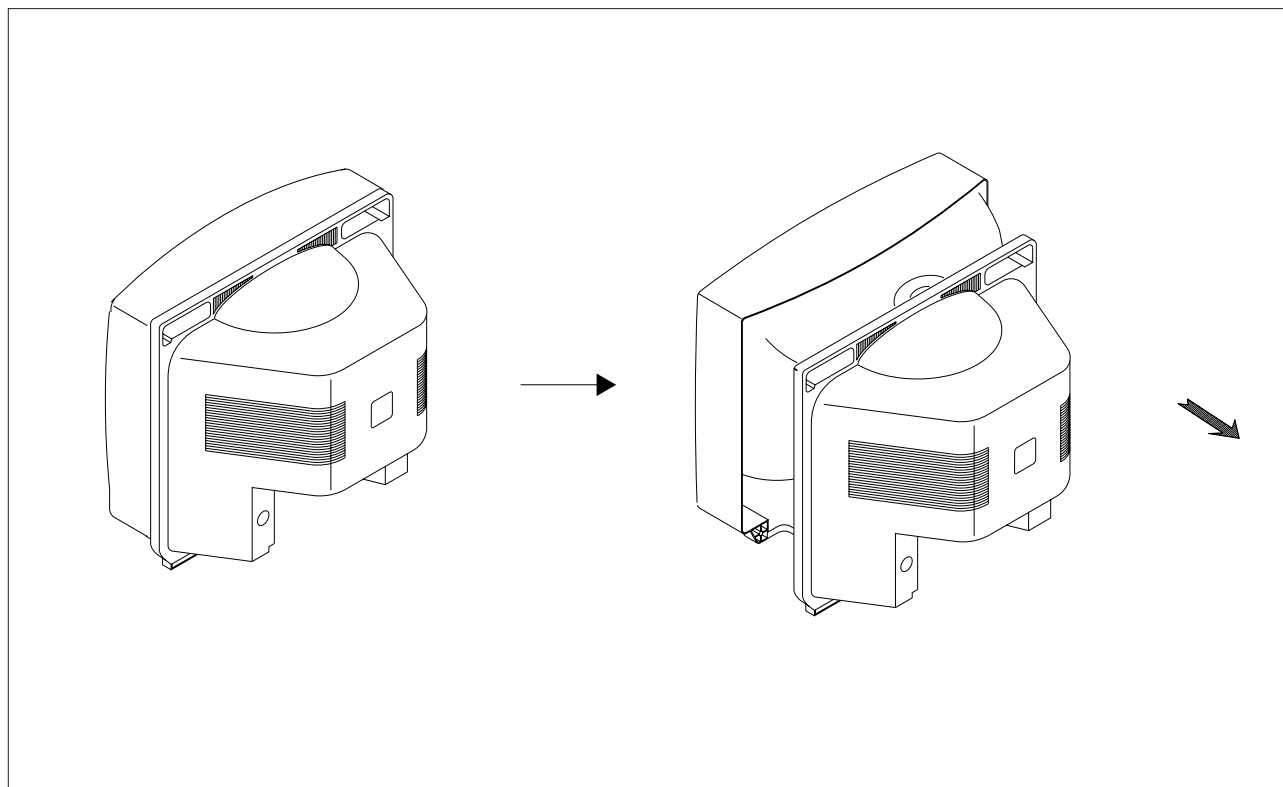


Fig. 3-1

1. After removing the screws, pull the cabinet backwards.

3-2 Main Board Removal

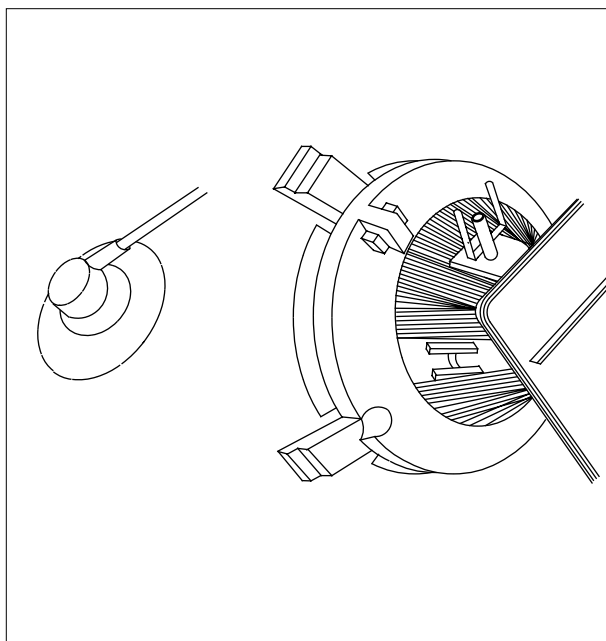


Fig. 3-2

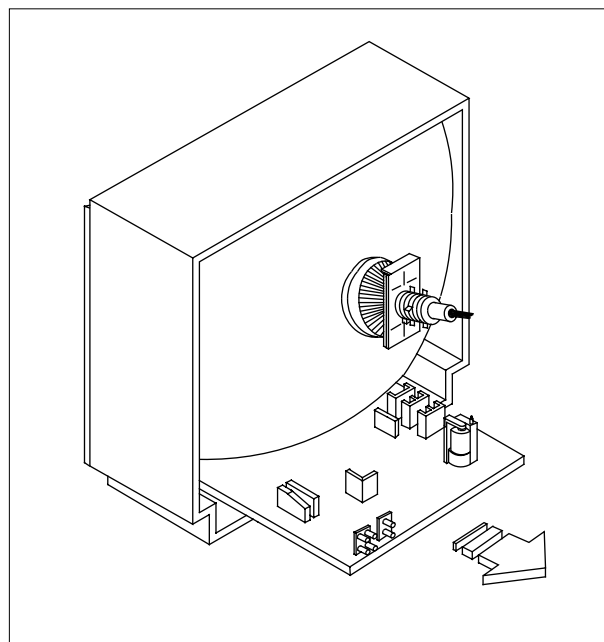


Fig. 3-3

1. Separate the socket board from the CRT neck.
2. Remove the Anode Cap from the CRT.
3. Remove the main board by pulling it with both hands.

Warning: The FBT is charged with high voltage.
Before removing the Anode Cap, discharge the voltage
through one of the heat sinks on the main board.

3-3 Speaker Removal

1. Loosen the screws and remove the speakers.

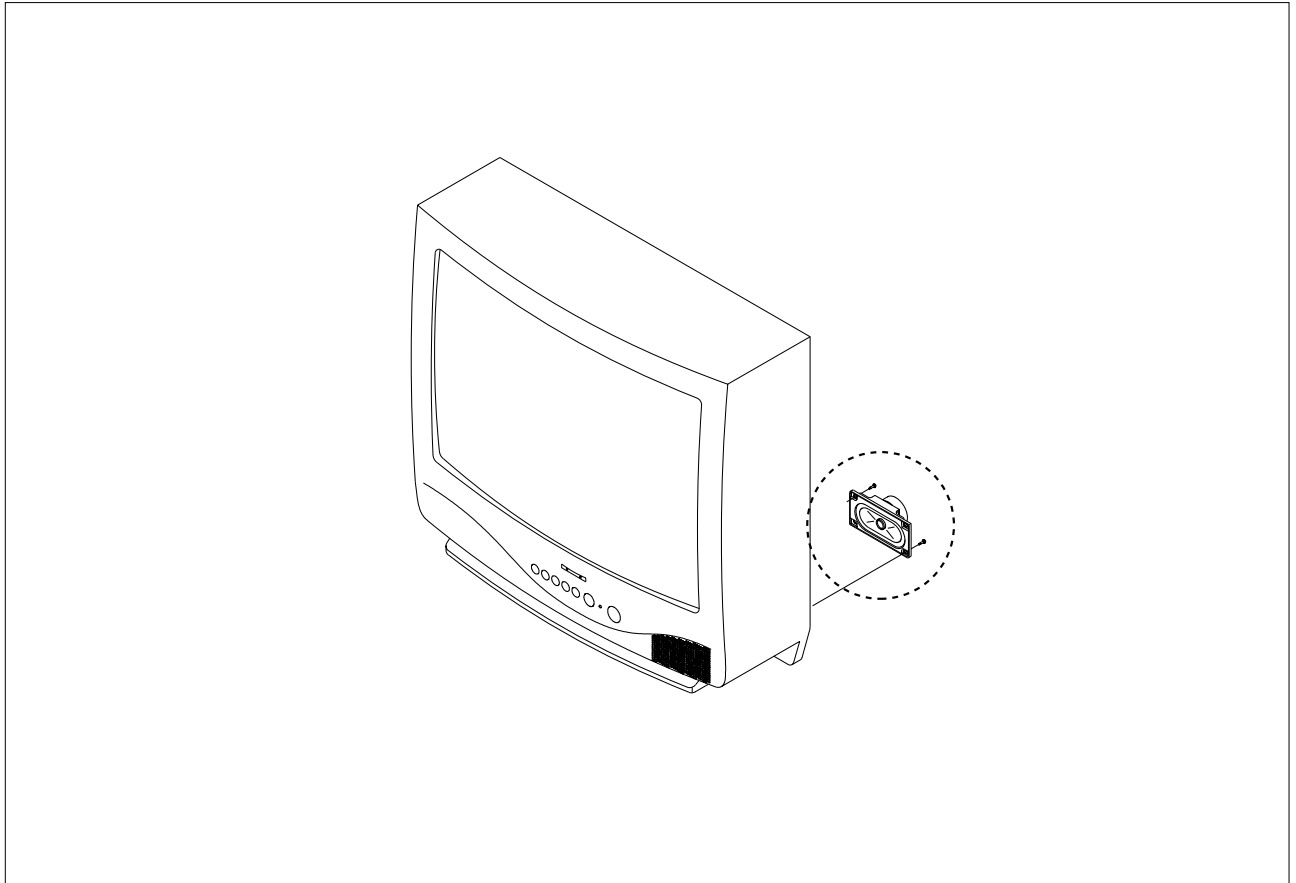


Fig. 3-4

3-4 CRT Remove

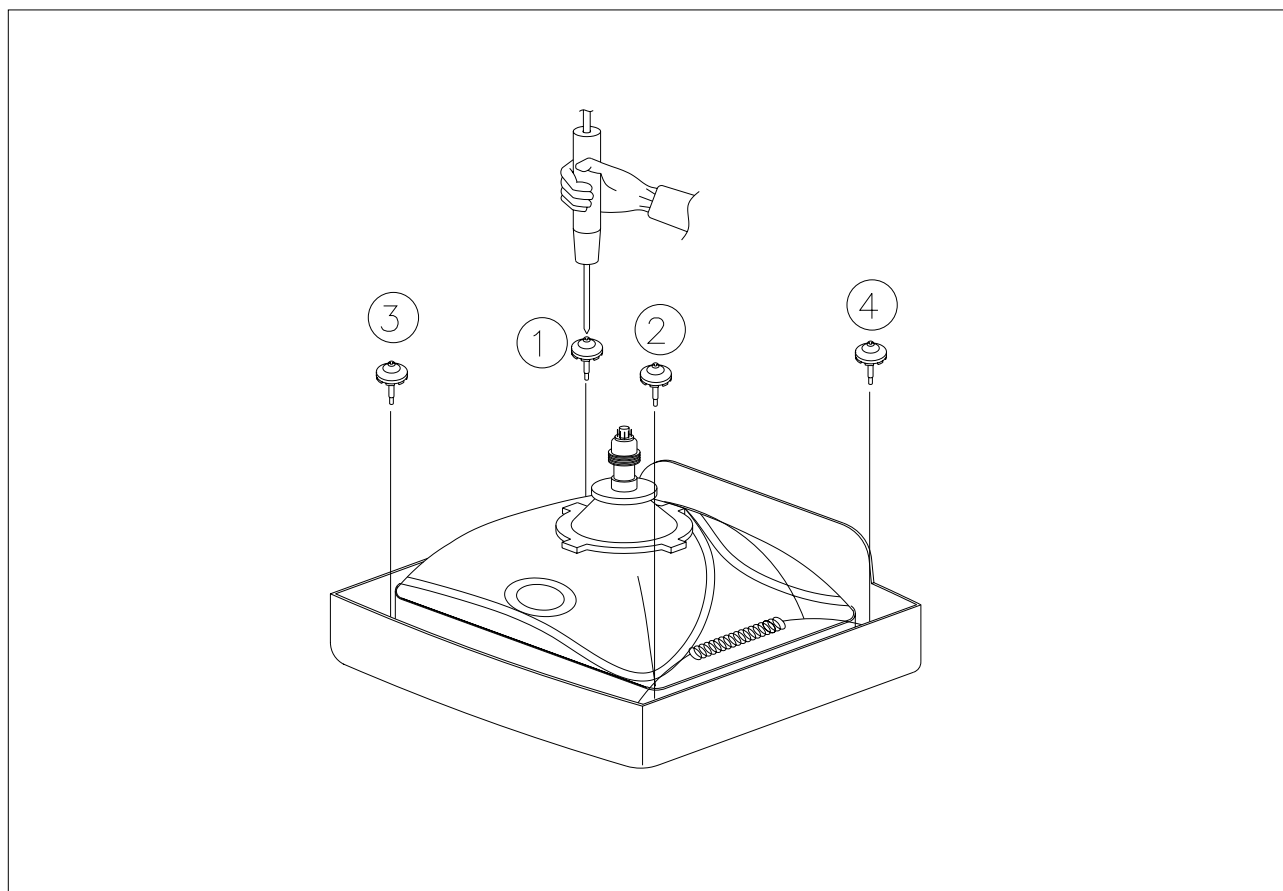


Fig. 3-5

1. Spread a soft mat on the floor. Place the TV set face down.
2. Remove the 4 nuts mounting the CRT to the front cabinet.
3. Lift the CRT.
4. Caution: Because of the high vacuum and large surface area of the picture tube, be careful while handling it:
(1) Always lift the picture tube by grasping it firmly around the face-plate, (2) Never lift the tube by its neck. (3) Do not scratch the picture tube or apply excessive pressure. Fractures of the glass may cause an implosion.

4. Alignment and Adjustments

4-1 Service Mode Adjustments

4-1-1 Service Mode Menus

Since there are no VRs in the K15A chassis, all adjustments after parts replacement must be done in the Service Mode. Service Mode adjustments are necessary when either the EEPROM (IC902) or the CRT is replaced.

4-1-2 Entering the Service Mode

Press the following transmitter keys while in STAND-BY mode:

MUTE—>1—>8—>2—>POWER
“Factory Mode Menu” is displayed

ADJUSTMENT	<---selected (violet)
PATTERN	
OPTION	
RESET	

Enter Service Mode using the Volume +, - keys. Service Mode Menu:

AGC	XX	RC	XXX
VCO	XX	GC	XXX
SBT	XX	BC	XX
SCT	XX	VA	XX
SCR	XX	VS	XX
STT	XXX	HS	XX
GG	XXX	SS	XX
BG	XXX	SVC : MUTE	

Select a mode to be adjusted, using the channel down key. Example: VCO.

AGC	XX	RC	XXX
VCO	XX	GC	XXX
SBT	XX	BC	XX
SCT	XX	VA	XX
SCR	XX	VS	XX
STT	XXX	HS	XX
GG	XXX	SS	XX
BG	XXX	SVC : MUTE	

Change the data with “Volume +, - “ keys.

VCO	71
-----	----

Return to the Service mode by pressing MENU.

AGC	XX	RC	XXX
VCO	XX	GC	XXX
SBT	XX	BC	XX
SCT	XX	VA	XX
SCR	XX	VS	XX
STT	XXX	HS	XX
GG	XXX	SS	XX
BG	XXX	SVC : MUTE	

Return to the Factory mode via the MENU key.

ADJUSTMENT
PATTERN
OPTION
RESET

Press POWER to enter the Stand-by mode.

4-1-3 Adjustment in Option Mode

This adjustment is necessary whenever the EEPROM is replaced. Input data (as marked on the back cabinet).

ADJUSTMENT
PATTERN
OPTION
RESET

Select "SET OPTION" by pressing the Channel ▼ key twice.

ADJUSTMENT
PATTERN
OPTION
RESET

Press the Volume +, - keys to enter the set Option mode.

BYTE 0:00

Press MENU to go back to the factory mode.

ADJUSTMENT
PATTERN
OPTION
RESET

Select RESET with channel ▼ key.

ADJUSTMENT
PATTERN
OPTION
RESET

Press volume + key.

POWER
OFF

4-1-4 Service Mode Adjustments

ADJUSTMENT
PATTERN
OPTION
RESET

1. The Pattern Adjustment is done only in the factory. Do not attempt to readjust it.
2. Refer to 4-2 for other adjustments.
3. Set OPTION data.

4-1-5 Service Mode Adjustment Ratings

No	Item	Function	Range	Initialized MICOM Data
1	AGC	RF AGC Adjustment	0~63	50
2	VCO	PIF VCO Adjustment	0~127	63
3	SCT	SUB-CONTRAST Adjustment	0~63	48
4	SCR	SUB-COLOR Adjustment	0~27	13
5	STT	SUB-TINT Adjustment	0~27	7
6	RC	RED-CUT OFF Adjustment	0~255	0
7	GC	GREEN-CUT OFF Adjustment	0~255	0
8	BC	BLUE-CUT OFF Adjustment	0~255	0
9	SVC	Input a Horiz line pattern		
10	GG	GREEN-GAIN Adjustment	0~255	127
11	BG	BLUE-GAIN Adjustment	0~255	127
12	SBT	SUB-BRIGHTNESS Adjustment	0~63	31
13	VA	VERTICAL SIZE Adjustment	0~63	39
14	VS	VERTICAL CENTER Adjustment	0	0
15	HS	HORIZONTAL Phase Adjustment	0~31	15
16	SS	SUB-SHARPNESS Adjustment	0~31	4

Note : The initial MICOM data values take effect when IC902 is replaced.


4-2 Alignment and Adjustment

4-2-1 General Alignment Instructions

1. Usually, a color TV needs only slight touch-up adjustment upon installation. Check the basic characteristics such as picture height, focus and a horizontal and vertical sync.
2. Observe the picture and check for good back and white details. There should be no objectionable color shading; If color shading is present, demagnetize the receiver. If color shading persists, perform purity and convergence adjustments described below.
3. To protect against shock hazard, use an isolation transformer.

4-2-2 Power Supply Check

Check the following:

- A: Power plug is connected; "Stand-by" mode
 B: Power On when "Power ON" button is pressed
 C: Power On by FBT Each supply is marked on its lead-in wire. ()

4-2-3 Focus Adjustment

Adjust the focus control on the FBT for well defined scanning lines.

4-2-4 Fail Safe Circuit Check (FS) (OPTION)

1. The failsafe check must be the final step in servicing.
2. Turn the power switch ON and adjust customer controls for normal operation.
3. Temporarily short pin X to pin R on the main board (RX06, RX04) with a jumper wire. Raster will disappear.
4. The TV must remain in this state even after removing the jumper wire. This shows that the failsafe circuit is working properly.
5. To recover picture and sound, temporarily turn off the TV and allow the failsafe circuit more than 30 seconds to reset. Then switch power ON to produce normal picture and sound.

4-2-5 IC902 Replacement

1. When IC902 is replaced, all values are reset to "Initialized MICOM Data" and readjustment is necessary.
2. Press the POWER button 10 seconds after plug-in.
3. To enter the Service Mode, refer to Fig. 4-1 (Service Mode Adjustment).

4-2-6 PIF VCO Adjustment

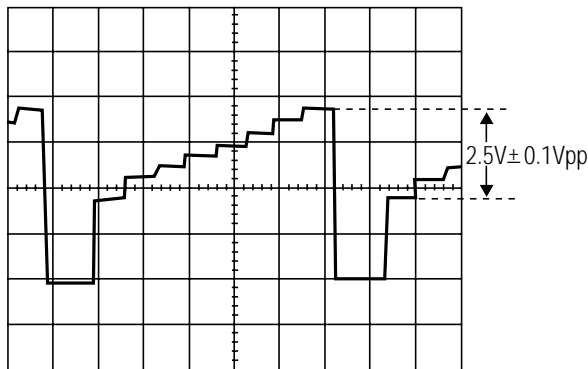
1. Use a Pattern Generator or an off-air signal.
2. Open pin 11 of Micom (IC901) or one side of lead pin for R237.
3. Adjust VCO in the service mode to set IC101 Pin 44 (AFT) to $2.5V \pm 0.4V$.
4. Connect the opened site.

4-2-7 RF-AGC Adjustment

1. Input a PHILLIPS pattern.
2. Set the input signal to 60 dB.
3. Enter into the AGC in the service mode.
4. Adjust AGC until color bar noise disappears.

4-2-8 Sub-Contrast Adjustment

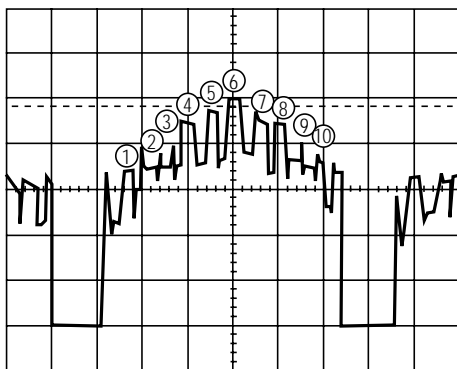
1. Input a gray scale pattern. Use a pattern generator (PM5518).
2. Short D208 to switch off the ABL feed-back.
3. Check CN201 R-OUT with an oscilloscope.
4. Set RC, BC, GC data to 0 in the Service Mode.
5. Adjust SCT to $2.40 \pm 0.1\text{Vp-p}$



6. Remove the short across D208 and restore ABL.

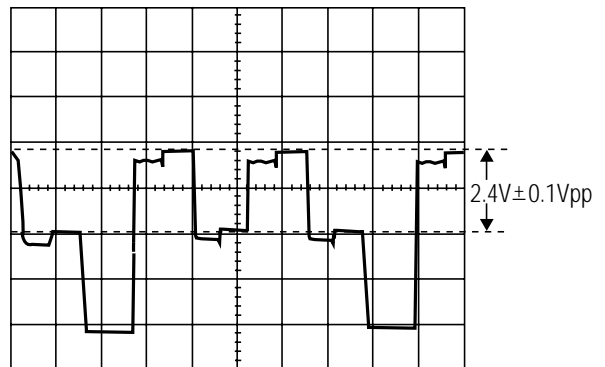
4-2-9 Sub-Tint Adjustment

1. Input a rainbow pattern.
2. Check CN201 B-OUT with an oscilloscope.
3. Adjust STT in the service mode until the 6th peak is the highest and the 5th and 7th peaks have equal heights.



4-2-10 Sub-Color Adjustment

1. Do sub-color adjustment after the Sub-Contrast and Sub-Tint adjustments.
2. D208 should still be shorted. The ABL should still be switched OFF.
3. Input a color bar pattern. Use a pattern generator (PM5518).
4. Check CN201 R-OUT (use an oscilloscope).
5. Ensure that the RC, GC and BC data are 0. BG are 140 and GG should be 90.
6. Adjust SCR to $2.4 \pm 0.1\text{Vp-p}$ (black and red levels).
7. Remove the short across D208 and restore ABL.



4-2-11 White Balance Adjustment

4-2-11 (A) LOW-LIGHT ADJUSTMENTS

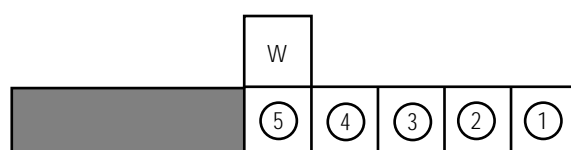
1. Input either a lion head or “pure white” color pattern.
2. Operate the receiver for 30 minutes.
3. Check the data in the service mode:
RC, GC, BC are 0 and SB is 16;
Steps BG are 90 and GG are 140.
4. Enter the horizontal line mode by pressing the MUTE key.
5. Adjust the screen VR on the FBT until a dim colored line (red, green or blue) appears on the screen.
6. After pressing the MUTE key, go to RC, BC or GC with channel ▲, ▼ keys. After putting a dim colored line (red, green or blue) in the horizontal line with MUTE key, adjust color with volume ▲, ▼ keys.
7. Exit the horizontal line via the MUTE key.

4-2-11 (B) HIGH-LIGHT ADJUSTMENTS

1. Input a high-light pattern
2. Adjust GG, BG in the Service Mode.
3. Recheck in low light.

4-2-12 Sub-Brightness Adjustment

1. Input a Toshiba pattern.
2. Warm up the receiver for 10 minutes.
3. Enter the Service Mode and set SB to the point where the 5th point is brighter in the gray scale.



4-2-13 Vertical Size Adjustment

1. Input a lion head pattern.
2. After the vertical center adjustment, enter into the service mode.
3. Adjust VA so that the each top and bottom of the screen is 4.0. If the top and bottom values are different, adjust VA so that the sum of the two values is 8.0.

4-2-14 Horizontal Size Adjustment

1. Receive a lion head pattern.
2. Enter into the service mode.
3. Adjust HS to symmetrized right and left.

4-2-15 When CRT Is Replaced

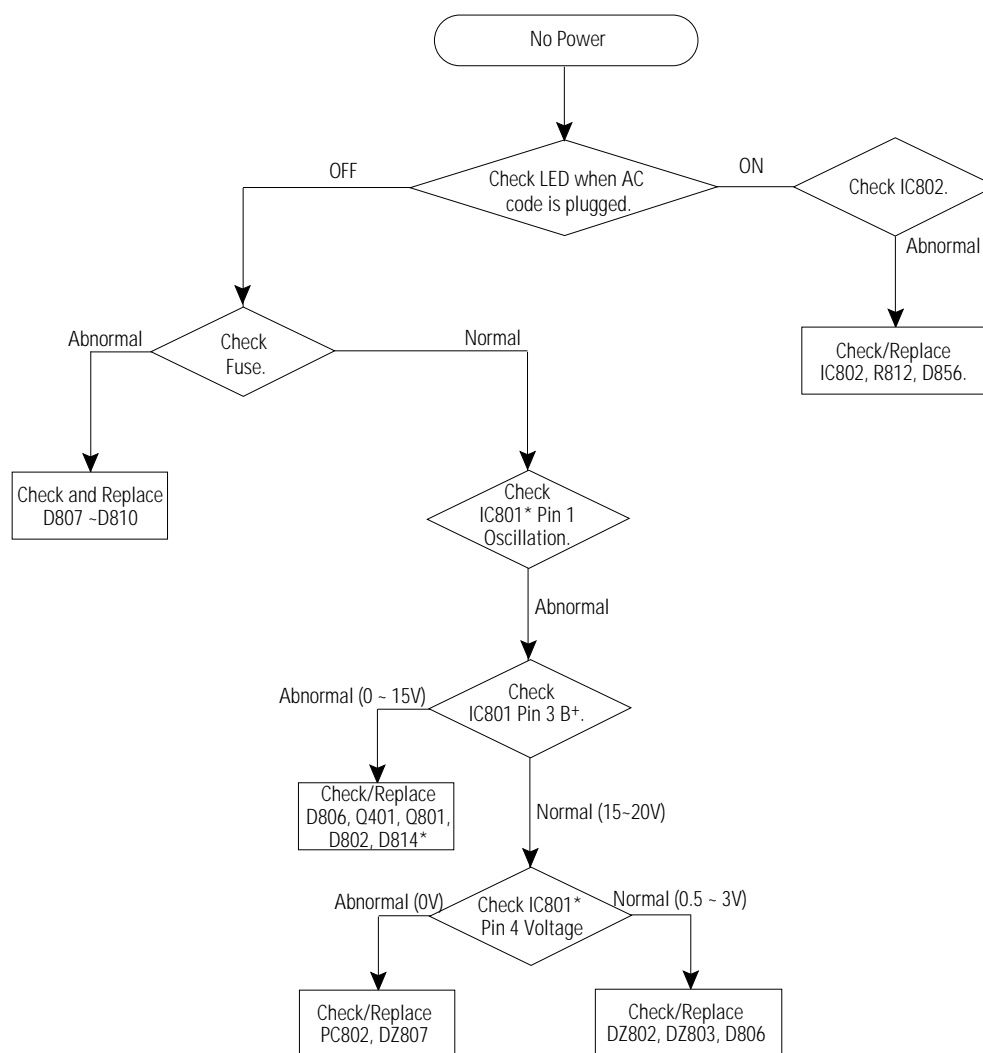
Do the following adjustments after the basic purity and convergence adjustments.

1. White Balance
2. Sub-brightness
3. Vertical Size
4. Horizontal Size
5. Fail safe (should be the final step).

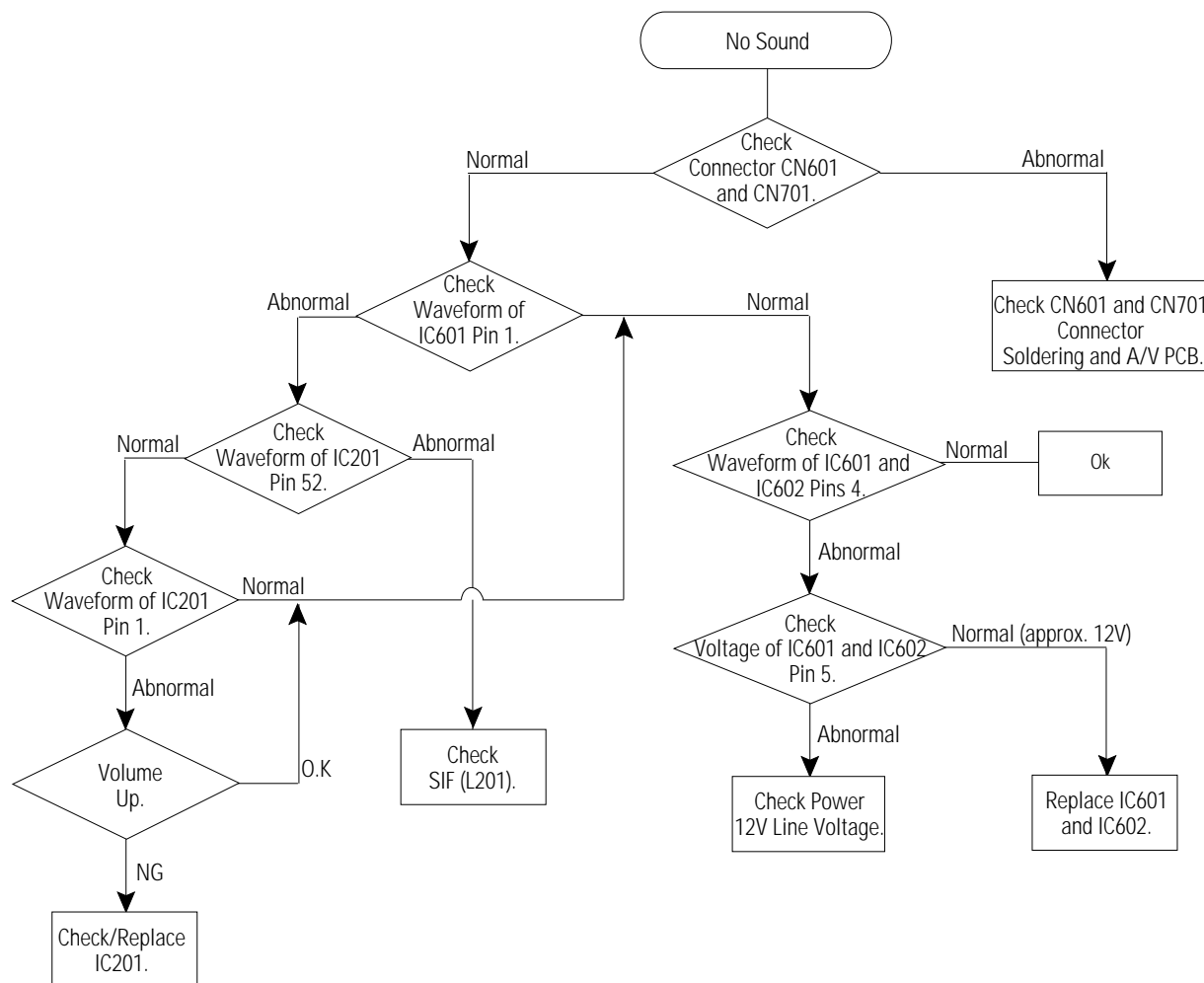
MEMO

5. Troubleshooting

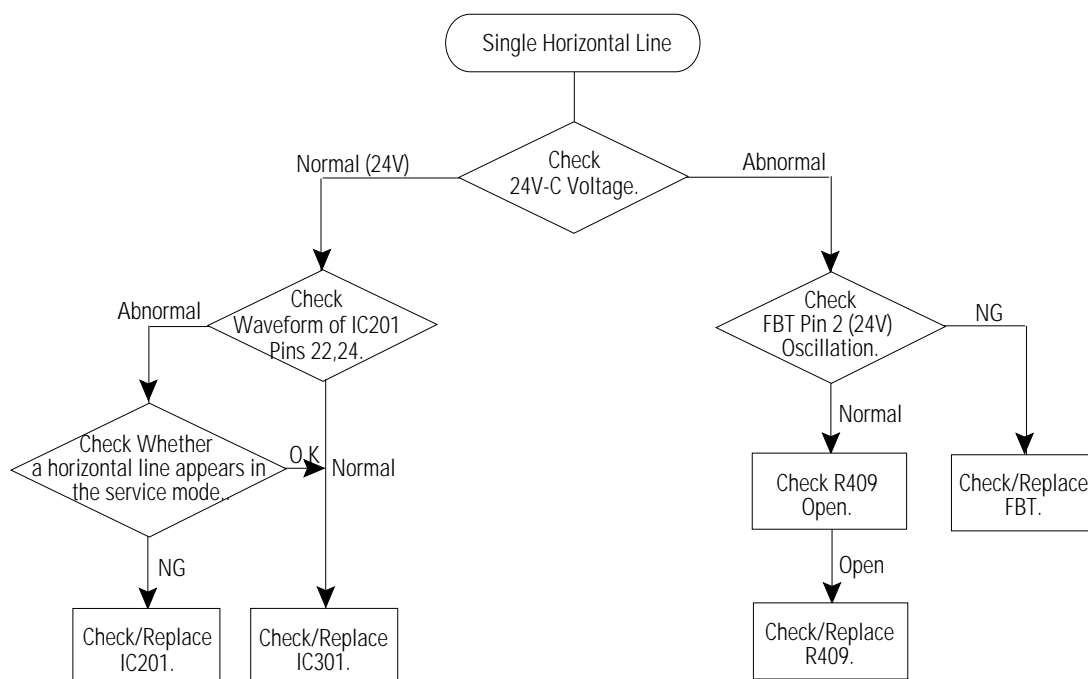
5-1 No Power



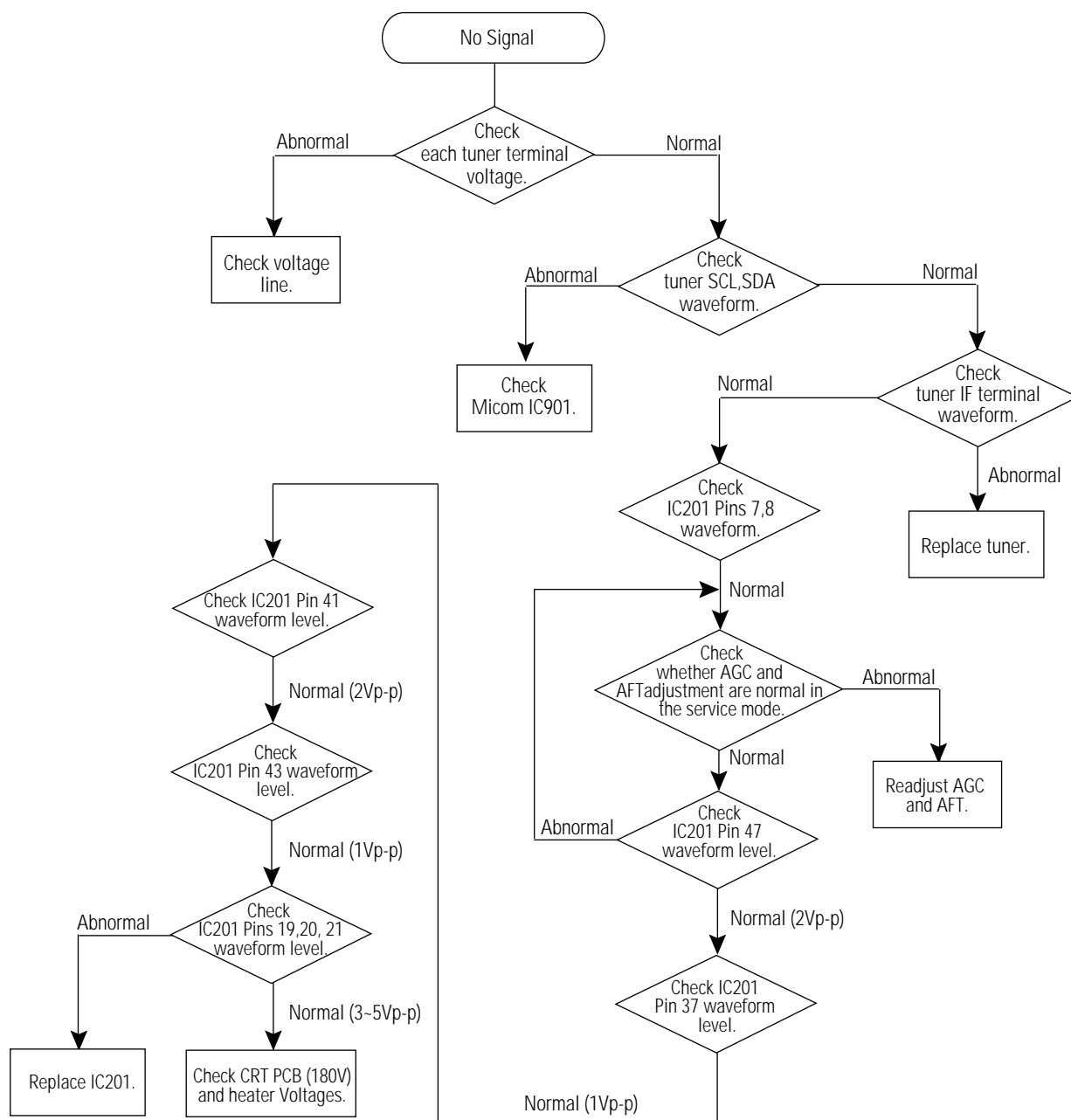
5-2 No Sound



5-3 Horizontal Line Appears

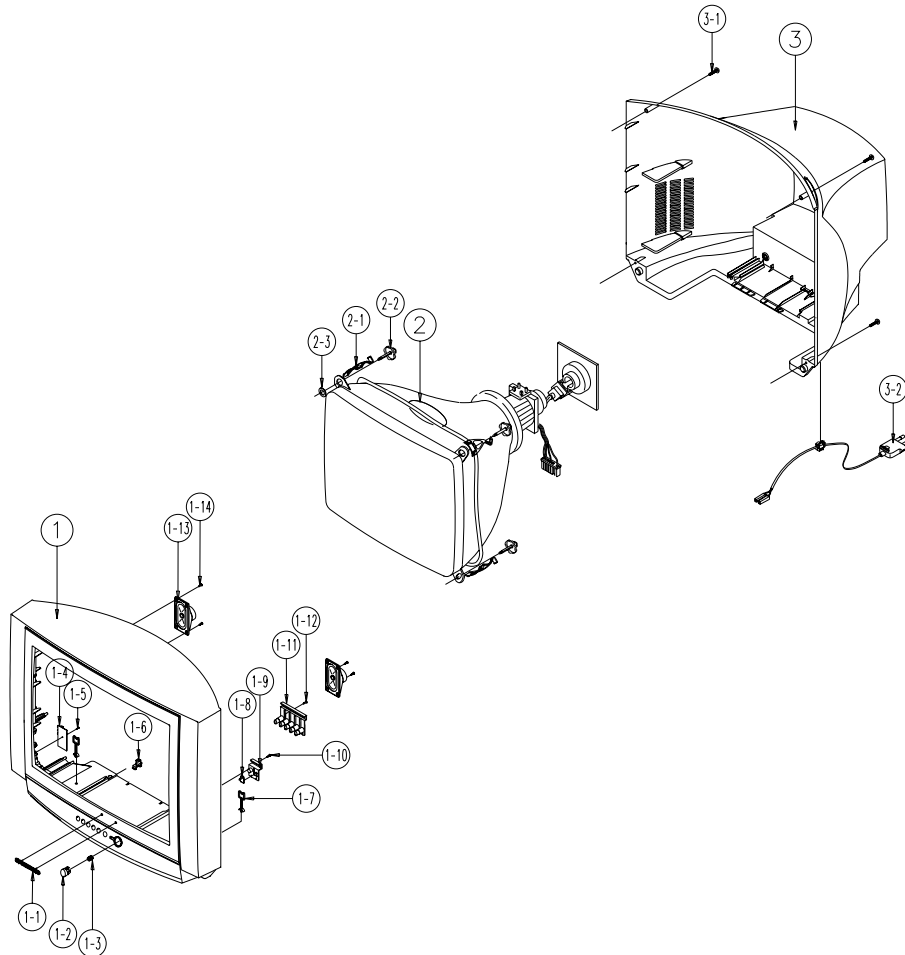


5-4 No Signal



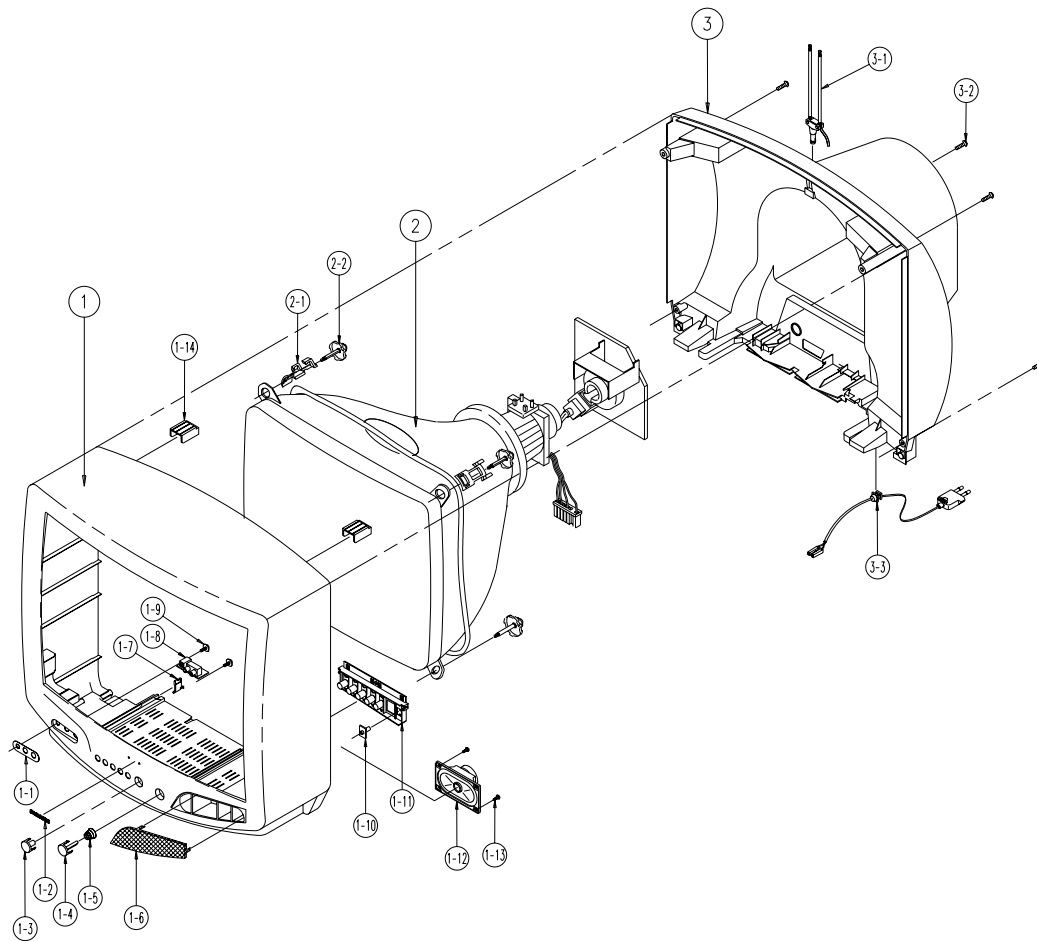
6. Exploded Views & Parts List

6-1 CT21D8L6X/XTC



No	Code No	Description	Specification	Q'ty	Remark
1	AA91-00589E	ASSY CABINET FRON	T;21D8 NT-ASIA,(SPK)SV	1	
	AA64-01423C	CABINET FRONT	;21D8 NT-ASIA,S907P+D004P E	1	
1-1	AA64-70123B	BADGE-BRAND	;AL,R2000,SILVER,L=50,SAMSUNG	1	
1-2	AA64-01425B	KNOB POWER	;21D8,ABS,-,G3676,SV907P;HB,-,	1	
1-3	AA61-60003J	SPRING-CS	;-SUS304,0.5,OD6,H12,N7,-,-,-	1	POWER
1-4	AA95-01131A	ASSY-PCB, A/V SIDE	;21D8,K15A,NTSC	1	
1-5	6002-000522	SCREW-TAPPING	;TH,+,2,M4,L15,ZPC(BLK),SWR	1	AV+CF
1-6	AA61-40113A	STOPPER-PCB	;501H,HIPS,NTR,HB,-,-	1	
1-7	AA65-30105A	CLAMP-WIRE	;NYLON 66,V2,NTR,15MM,ALL MODE	1	
1-8	AA64-01011B	INDICATOR LED	;29D8,ACRYL,-,CLR,-,-,-	1	
1-9	AA64-01426B	WINDOW REMOCON	;21D8,PC,-,-,-,VOILET,-,-	1	
1-10	6003-001026	SCREW-TAPTITE	;RH,+,B,M4,L15,ZPC(BLK),SWR	1	WIN+CF
1-11	AA64-01012B	KNOB CONTROL	;29D8,ABS,-,G3676,SV-907P;HB	1	
1-12	6003-001026	SCREW-TAPTITE	;RH,+,B,M4,L15,ZPC(BLK),SWR	1	KC+CF
1-13	3001-000274	SPEAKER	;5W,8ohm,90dB,160Hz	2	
1-14	6003-001019	SCREW-TAPTITE	;RH,+,B,M4,L12,ZPC(BLK),SWR	8	SPK+CF
2	AA94-50020B	ASSY-CRT	;A51KQJ63X(H),0MG,21,BARE,-,NO	1	
2-1	AA65-30107A	CLAMP-D,COIL	;NYLON 66,V2,NTR,-,20-22 INC	4	
2-2	AA60-10050R	SCREW-ASSY	;-SWRCH18A,M5,L31.5,HH,+,WC,-	4	CRT+CF
3	AA64-01422E	CABINET BACK	;21D8,HIPS,HB,G4309	1	
3-1	AA60-10050T	SCREW-TAPPING	;-SWRCH18A,M4,L20,RH,+,2S,	4	CB+CF
3-2	AA96-20112A	ASSY-POWER,CORD	;-EP2/NO,H/C300,KJ10,THA	1	

6-2 CT5038G6X/XAP



No	Code No	Description	Specification	Q'ty	Remark
1	AA91-10382N	ASSY CABINET FRON	T,5038,(SPK)SV704P EPN	1	
	AA64-31263Z	CABINET FRONT	:5038,SV704P EPN,HIPS,HB,G4	1	
2	AA61-40010A	BOSS-WING	:-,HIPS,HB,NTR,-,-	2	
3	AA61-40007A	STOPPER-PCB	:5038.5368,HIPS HB,-,NTR,-,-	1	
4	AA64-10187G	KNOB POWER	:5038,ABS,-,G3676,NO-SILK,HB,-	1	
5	AA61-60003J	SPRING-CS	:-,SUS304,0.5,OD6,H12,N7,-,-,-	1	KNOPOW
6	AA64-70127F	BADGE-BRAND	:AL,SAMSUNG,SILVER,L40,R800,N	1	
7	AA64-40085A	WINDOW-REMOCON	:-,5038,-,PC,V0,VIOLET,-	1	
8	AA63-50056B	GRILLE-WOOFER	:-,5038,SV-704G,SECC,T0.5,-	1	
9	AA64-40188A	INDICATOR-LED	:-,5038,-,ACRYL,-,-,-	1	
10	AA64-10050C	KNOB-CONTROL	:-,5038,G3676,ABS,HB,GRAY	1	
11	3001-001020	SPEAKER	:3W,8ohm,90dB,140Hz	1	
12	6003-001026	SCREW-TAPTITE	:RH,+,B,M4,L15,ZPC(BLK),SWR	2	SPK+CF
13	AA65-30107A	CLAMP-D,COIL	:NYLON 66,V2,NTR,-,20-22 INC	4	
14	AA60-10050R	SCREW-ASSY	:-,SWRCH18A,M5,L31.5,HH,+,WC,-	4	CRT+CF
15	AA27-20003X	COIL-DEGAUSSING	:-,20,14.4ohm,48T,L2170,	1	LC801S
16	AA03-10029W	CRT-COLOR	:-,A48KRD82X(H),+380mG,20,90de	1	
17	AA27-50004W	DEFLECTION-YOKE	:-,DSE-1992LL(1H),PCL,A48	1	
18	3704-001105	SOCKET-CRT	:11P,20PI,26.5PI,NI,-	1	V999S
19	AA64-30375B	CABINET-BACK	:-,5073,38,-,HIPS,HB,BLK,-,-	1	
20	AA42-10001V	ANT-ROD	:-,3S,620mm,BRN,UL/CSA	1	
21	6003-001026	SCREW-TAPTITE	:RH,+,B,M4,L15,ZPC(BLK),SWR	4	CB+CF
22	AA96-20109C	ASSY-POWER,CORD	:-,CP2/NO(4.0),H/C300,KKP	1	

7. Electric Parts List

7-1 CT21D8L6X/XTC

Loc. No.	Code No.	Description ; Specification	Remark	Loc. No.	Code No.	Description ; Specification	Remark
ASSY PCB MAIN(OPT)							
1	*	AA94-02665R ASSY PCB MAIN(OPT);CT21D8L6X/XTC,K15A,PH		C110	2401-002594 C-AL:220uF,20%,16V,GP,TP,8x11.5,5	
..2	C203	2401-000133 C-AL:1000uF,20%,16V,GP,TP,10x20,5		C151	2202-000127 C-CERAMIC,MLC-AXIAL:10nF,+80-20%,25V,Y5V	
..2	CN501	AA39-20109A LEAD CONNECTOR-ASSY;8P,YBNH025-08,S,400		C153	2202-000127 C-CERAMIC,MLC-AXIAL:10nF,+80-20%,25V,Y5V	
..2	CU03	2401-000144 C-AL:47uF,20%,16V,GP,TP,5x11,5		C201	2201-000292 C-CERAMIC,DISC:1nF,10%,50V,Y5P,TP,5x3,5,	
..2	D814A	AA96-00243D ASSY H/S;-BRIDGE,AA62-00045A,D06U20S,D		C202	2401-001333 C-AL:470nF,20%,50V,GP,TP,5x11,5	
...	0205-000129	GREASE-SILICON:SC102,JAPAN	S.N.A	C204	2301-000188 C-FILM,PEF;1nF,5%,100V,TP,10.5x12.5x6.5,	
...	0402-001374	DIODE-RECTIFIER:FFP06U20S,200V,6A,TO-22		C205	2401-001333 C-AL:470nF,20%,50V,GP,TP,5x11,5	
...	6003-000335	SCREW-TAPTITE;RH,+,2S,M3,L8,ZPC(YEL),SWR		C206	2305-001011 C-FILM,MPEF;22nF,5%,100V,TP,3.5x12.5x7.5	
...	AA62-00045A	HEAT SINK-PS;-;T1.0;-;DREAM;-;-;-;-	S.N.A	C207	2401-001333 C-AL:470nF,20%,50V,GP,TP,5x11,5	
..2	GT101A	AA39-20010D LEAD CONNECTOR-ASSY;1P,YFH800-01,S,400,		C209	2202-000632 C-CERAMIC,MLC-AXIAL:100nF,20%,50V,Z5U,TP	
..2	IC601	AA96-50397A ASSY-H/S;-;AA62-30180J,TDA7266S,-		C210	2202-000632 C-CERAMIC,MLC-AXIAL:100nF,20%,50V,Z5U,TP	
...	0205-000129	GREASE-SILICON:SC102,JAPAN	S.N.A	C211	2202-000632 C-CERAMIC,MLC-AXIAL:100nF,20%,50V,Z5U,TP	
...	1201-001308	IC-POWER AMP;7266,ZIP,15P;-;DUAL,26dB,PL		C212	2201-000982 C-CERAMIC,DISC:10nF,+80-20%,50V,Y5V,TP,4	
...	6003-000333	SCREW-TAPTITE;RH,+,2S,M3,L10,ZPC(YEL),SW		C213	2201-000193 C-CERAMIC,DISC:0.01nF,0.25pF,50V,NP0,TP	
...	AA62-30180J	HEAT SINK-ES;-;A6063 EXTR;-;WHT;-;-;-;40	S.N.A	C214	2401-000660 C-AL:2.2uF,20%,50V,GP,TP,5x11,5	
..2	JA701	3722-001453 JACK-RCA;3P,3.4mm,NJ,BLK,-		C215	2401-001840 C-AL:100uF,20%,16V,GP,TP,6.3x11,5	
△	LC801S	AA27-00144A COIL DEGAUSSING;48T,90HM,21INCH,110/220		C218	2301-000395 C-FILM,PEF;18nF,5%,50V,TP,6.5x12.5x3.5mm	
..2	R988	2301-000235 C-FILM,PEF;3.9nF,5%,50V,TP,6.5x3.0x5.5mm		C219	2401-000603 C-AL:1uF,20%,50V,GP,TP,5x11,5	
..2	RESET	2301-000383 C-FILM,PEF;10nF,5%,50V,TP,6x7x3.2mm,5mm		C220	2401-000480 C-AL:10uF,20%,50V,GP,TP,5x11,5	
△	T444S	AA26-30001Y TRANS-FLYBACK;-;FSV-20A001,20,125V		C221	2401-002462 C-AL:33uF,20%,16V,GP,TP,5x11,5	
..2	X901	2801-003224 CRYSTAL-UNIT;32.768KHZ,20PPM,28-AA,Y,12.5		C222	2305-000665 C-FILM,MPEF;100nF,5%,63V,TP,7.5x4.0x5.0mm	
..2		AA61-00726B HOLDER-COVER;K15A,NYLON 66;-;-;-;BLK,V2,		C225	2401-000480 C-AL:10uF,20%,50V,GP,TP,5x11,5	
..2		AA98-60005V ASSY-SUB,PART;KCT15A,MAIN;-;-	S.N.A	C226	2401-000603 C-AL:1uF,20%,50V,GP,TP,5x11,5	
..3		0202-000187 SOLDER-WIRE FLUX;-;RS60S,D1.2,63Sn/37Pb	S.N.A	C227	2305-000665 C-FILM,MPEF;100nF,5%,63V,TP,7.5x4.0x5.0mm	
..2		AA99-30219B ASSY-PCB ROBOT; AA94-02665R ,ER	S.N.A	C229	2202-000127 C-CERAMIC,MLC-AXIAL:10nF,+80-20%,25V,Y5V	
..3	C801	2401-002219 C-AL:220uF,20%,400V,GP,ST,25x40,10		C230	2202-000632 C-CERAMIC,MLC-AXIAL:100nF,20%,50V,Z5U,TP	
..3	CN704	3711-003641 CONNECTOR-HEADER-BOX,12P;1R,2.5mm,STRAIG		C231	2401-002144 C-AL:47uF,20%,16V,GP,TP,5x11,5	
△	CR401S	2306-000327 C-FILM,MPPF;6.3nF,3%,1.6KV,TP,28.5x18x10		C232	2401-002144 C-AL:47uF,20%,16V,GP,TP,5x11,5	
△	CY801S	2201-000446 C-CERAMIC,DISC:3.3nF,20%,400V,Y5U,TP,15x		C234	2301-000232 C-FILM,PEF;3.3nF,5%,50V,TP,8.1x4.5x13mm,	
△	FP801S	3601-001012 FUSE;250V,4A,SLOW-BLOW,GLASS,5.2x20		C235	2202-000279 C-CERAMIC,MLC-AXIAL:47pF,5%,50V,SL,TP,3.	
△	IC201S	1204-001259 IC-VIDEO SYSTEM;TA1282N,DIP56P,600MIL,P		C236	2202-000127 C-CERAMIC,MLC-AXIAL:10nF,+80-20%,25V,Y5V	
..3	IC301	AA96-50075A ASSY-H/S;-;VERT,AA62-30032A,KA2131,ROBO	S.N.A	C237	2202-000791 C-CERAMIC,MLC-AXIAL:150pF,10%,50V,Y5P,TP	
....		1204-000475 IC-VIDEO SYSTEM;KA2131,SIP,10P;-;PLASTIC		C301	2301-000016 C-FILM,PEF;22nF,5%,100V,TP,7.2x4.5x9.0mm	
....		6003-000334 SCREW-TAPTITE;RH,+,2S,M3,L6,ZPC(YEL),SWR		C303	2202-000127 C-CERAMIC,MLC-AXIAL:10nF,+80-20%,25V,Y5V	
....		AA62-30032A HEAT SINK-PS;-;SPC-1,T1.0;-;FT-2,V-PRO;-	S.N.A	C304	2305-000289 C-FILM,MPEF;220nF,5%,63V,TP;-;5mm	
△	IC801S	AA96-00242A ASSY H/S;-;AA62-30186B,KA5Q0765R,-	S.N.A	C305	2305-000149 C-FILM,MPEF;100nF,5%,100V,TP,12x12.5x6.5	
....		0205-000129 GREASE-SILICON:SC102,JAPAN	S.N.A	C306	2401-002458 C-AL:1000uF,20%,35V,GP,TP,16x25,7.5	
....		1203-001932 IC-PWM CONTROLLER;5Q0765,TO-220F,5P,185M		C308	2301-000310 C-FILM,PEF;68nF,5%,50V,TP,8.0X8.5X4.0X5,	
....		6003-000333 SCREW-TAPTITE;RH,+,2S,M3,L10,ZPC(YEL),SW		C309	2401-000365 C-AL:100uF,20%,50V,WT,TP,10x12.5mm,	
....		AA62-30186B HEAT SINK-ES;-;SILVER,171J + COVER-H	S.N.A	C310	2401-000480 C-AL:10uF,20%,50V,GP,TP,5x11,5	
△	IC802	1203-001532 IC-POSI.FIXED REG.;7631,SIP,10P;-;PLASTI		C311	2305-000412 C-FILM,MPEF;470nF,5%,63V,TP;-;5mm	
..3	IC901	AA09-00074A IC-MCU;Z9036512PSC-R50C7,CT-5066,42P,		C312	2401-003561 C-AL:1uF,10%,50V,GP,TP,5x11mm,5	
..3	IC902	1103-001212 IC-EEPROM;M24C02-WBN6,256x8Bit,SDIP,8P,3		C313	2305-000470 C-FILM,MPEF;68nF,5%,100V,TP;-;5mm	
..3	LD901	AA96-00555A ASSY LED GUIDE;-;UEX-LD-030,GREEN	S.N.A	C401	2301-000224 C-FILM,PEF;22nF,5%,50V,TP,7.4x3.9x13mm,5	
△	LR401S	AA27-30001A COIL-LINEARLITY;-;157uH,QIC1010,PIO 4,4,		C405	2305-000704 C-FILM,MPEF;100nF,5%,250V,TP,16.5x10.3x5	
△	LX801S	AA29-30001D FILTER-LINE NOISE;SQ1913;-;6.0MH,0.8A,-		C406	2201-000556 C-CERAMIC,DISC:0.47nF,10%,500V,Y5P,TP,5.	
△	NT801S	1404-001045 THERMISTOR-NTC;4.7ohm,15%,2900K,35.0mW,T		C407	2401-001429 C-AL:470uF,20%,50V,GP,TP,13x20,5	
△	P801S	1404-001156 THERMISTOR-PTC;90HM,+30%/-20%,220VRMS,27		C408	2201-000556 C-CERAMIC,DISC:0.47nF,10%,500V,Y5P,TP,5.	
△	PC801S	0604-001038 PHOTO-COUPLER;TR,130-260%,200mW,DIP-4,ST		C409	2401-001998 C-AL:1000uF,20%,25V,GP,TP,10x20,5mm	
..3	Q401	0502-001115 TR-POWER;KSC5386,NPN,50W,TO-3PF,ST,8-		C410	2301-000224 C-FILM,PEF;22nF,5%,50V,TP,7.4x3.9x13mm,5	
..3	RM901	AA59-60001U MODULE-REMOCON;-;ORC-50VF/SR-12V,38KH,9		C411	2201-000556 C-CERAMIC,DISC:0.47nF,10%,500V,Y5P,TP,5.	
△	SF101S	2904-001241 FILTER-SAW AV;45.75MHz,SIP5K,ST,14.4dB,M		C412	2401-000927 C-AL:22uF,20%,250V,GP,TP,13x20,5	
△	SW906	3404-000295 SWITCH-TACT;12VDC,50mA,160gf,8.4X22,7,SP		C413	2401-002268 C-AL:2.2uF,20%,250V,LZ,TP,8X11,5	
..3	T401	AA26-50001B TRANS-HORIZ.DRIVE;-;7.1mH,102uH,10-20uH,		C444	2201-000441 C-CERAMIC,DISC:3.3nF,10%,500V,Y5P,TP,10x	
△	T801S	AA26-00043A TRANS SWITCHING;-;-;AC90-260V,125/12.5		C445	2201-000441 C-CERAMIC,DISC:3.3nF,10%,500V,Y5P,TP,10x	
△	TU01S	AA40-00045A TUNER-F/S;TECC1070PG32A(S),NTSC,TR,181CH		C501	2202-000863 C-CERAMIC,MLC-AXIAL:560pF,10%,50V,Y5P,TP	
△	V999S	3704-001105 SOCKET-CRT;11P,20PI,26.5PI,NL,-		C502	2202-000862 C-CERAMIC,MLC-AXIAL:390pF,10%,50V,Y5P,TP	
..3	X202	2802-000172 RESONATOR-CERAMIC;503.5KHZ,0.5%,BK,7.0X3		C503	2202-000825 C-CERAMIC,MLC-AXIAL:680pF,10%,50V,Y5P,TP	
..3		AA99-10213D ASSY-PCB MAIN,AUTO; AA99-30219B ,V	S.N.A	C505	2201-000723 C-CERAMIC,DISC:4.7nF,20%,3KV,Y5U,TP,16x5	
....	04LOT	AA41-11037H PCB-MAIN;K15A,1L,CEM-1,245x245x1.6T,1A,	S.N.A	C601	2401-001998 C-AL:1000uF,20%,25V,GP,TP,10x20,5mm	
....	C101	2202-000127 C-CERAMIC,MLC-AXIAL:10nF,+80-20%,25V,Y5V		C602	2301-000383 C-FILM,PEF;10nF,5%,50V,TP,6x7x3.2mm,5mm	
....	C102	2401-000660 C-AL:2.2uF,20%,50V,GP,TP,5x11,5		C603	2401-000603 C-AL:1uF,20%,50V,GP,TP,5x11,5	
....	C104	2202-000127 C-CERAMIC,MLC-AXIAL:10nF,+80-20%,25V,Y5V		C604	2401-000603 C-AL:1uF,20%,50V,GP,TP,5x11,5	
....	C108	2401-000480 C-AL:10uF,20%,50V,GP,TP,5x11,5		C611	2202-000279 C-CERAMIC,MLC-AXIAL:47pF,5%,50V,SL,TP,3.	
				C612	2202-000279 C-CERAMIC,MLC-AXIAL:47pF,5%,50V,SL,TP,3.	
				C701	2305-000665 C-FILM,MPEF;100nF,5%,63V,TP,7.5x4.0x5.0mm	
				C705	2202-000183 C-CERAMIC,MLC-AXIAL:2.2NF,20%,16V,Y5R,TP	

Electric Parts List

Loc. No.	Code No.	Description ; Specification	Remark
....4	C802	2201-000119 C-CERAMIC,DISC:100nF,+80-20%,50V,Y5V,TP,	
....4	C803	2301-001435 C-FILM,PPF:1.5nF,5%,1.2kV,TP,15x8x12.5mm	
....4	C805	2201-000991 C-CERAMIC,DISC:0.56nF,10%,2kV,Y5P,TP,7.5	
....4	C806	2401-000262 C-AL:100uF,20%,160V,HR,TP,16x25,7.5	
....4	C807	2201-000599 C-CERAMIC,DISC:0.56nF,10%,500V,Y5P,TP,5.	
....4	C808	2301-000016 C-FILM,PEF:22nF,5%,100V,TP,7.2x4.5x9.0mm	
....4	C810	2305-000412 C-FILM,MPEF:470nF,5%,63V,TP,-,5mm	
....4	C811	2401-000302 C-AL:100uF,20%,25V,GP,TP,6.3x11,5	
....4	C812	2401-002463 C-AL:470uF,20%,16V,GP,TP,8x11.5,5	
....4	C816	2401-000480 C-AL:10uF,20%,50V,GP,TP,5x11,5	
....4	C817	2401-001840 C-AL:100uF,20%,16V,GP,TP,6.3x11,5	
....4	C820	2401-000703 C-AL:2200uF,20%,25V,GP,-,12.5x25mm,	
....4	C821	2401-001486 C-AL:47uF,20%,160V,HR,TP,13x20mm,5m	
....4	C822	2301-000192 C-FILM,PEF:1nF,5%,50V,TP,5.3x10mm,5mm	
....4	C823	2201-000370 C-CERAMIC,DISC:0.22nF,10%,50V,Y5P,TP,4x3	
....4	C851	2401-001192 C-AL:33uF,20%,50V,GP,TP,6.3x11,5	
....4	C852	2301-000235 C-FILM,PEF:3.9nF,5%,50V,TP,6.5x3.0x5.5mm	
....4	C901	2401-002144 C-AL:47uF,20%,16V,GP,TP,5x11,5	
....4	C902	2202-000796 C-CERAMIC,MLC-AXIAL:1nF,10%,50V,Y5P,TP,3	
....4	C903	2401-000480 C-AL:10uF,20%,50V,GP,TP,5x11,5	
....4	C904	2202-000796 C-CERAMIC,MLC-AXIAL:1nF,10%,50V,Y5P,TP,3	
....4	C905	2401-001333 C-AL:470nF,20%,50V,GP,TP,5x11,5	
....4	C906	2201-000471 C-CERAMIC,DISC:0.33nF,10%,50V,Y5P,TP,4x3	
....4	C907	2305-000665 C-FILM,MPEF:100nF,5%,63V,TP,7.5x4.0x5.0m	
....4	C908	2201-000193 C-CERAMIC,DISC:0.01nF,0.25pF,50V,NP0,TP,	
....4	C909	2201-000573 C-CERAMIC,DISC:0.047nF,5%,50V,NP0,TP,5x3	
....4	C910	2301-000445 C-FILM,PEF:4.7nF,5%,50V,TP,5.5x7x3mm,5mm	
....4	C911	2401-000480 C-AL:10uF,20%,50V,GP,TP,5x11,5	
....4	C912	2305-000470 C-FILM,MPEF:68nF,5%,100V,TP,-,5mm	
....4	C915	2202-000127 C-CERAMIC,MLC-AXIAL:10nF,+80-20%,25V,Y5V	
△	CN604	3711-002643 CONNECTOR-HEADER:BOX,4P,1R,2.5MM,STRAIGH	
△	CR402S	2201-000467 C-CERAMIC,DISC:0.33nF,10%,2kV,Y5P,TP,6.3	
△	CR403S	2306-000004 C-FILM,MPPF:330nF,5%,250V,TP,20x18.5x10.	
....4	CS601	2401-000603 C-AL:1uF,20%,50V,GP,TP,5x11,5	
....4	CS602	2301-000383 C-FILM,PEF:10nF,5%,50V,TP,6x7x3.2mm,5mm	
....4	CS603	2202-000796 C-CERAMIC,MLC-AXIAL:1nF,10%,50V,Y5P,TP,3	
....4	CS608	2202-000183 C-CERAMIC,MLC-AXIAL:2.2nF,20%,16V,Y5R,TP	
....4	CS609	2202-000183 C-CERAMIC,MLC-AXIAL:2.2nF,20%,16V,Y5R,TP	
....4	CU02	2305-000665 C-FILM,MPEF:100nF,5%,63V,TP,7.5x4.0x5.0m	
....4	D101	0403-000700 DIODE-ZENER:TPZ33A,33V,31-35V,1W,DO-41,T	
....4	D102	0403-000508 DIODE-ZENER:MTZJ5.6B,5.6V,5.45-5.73V,500	
....4	D103	0402-000132 DIODE-RECTIFIER:1N4004,400V,1A,DO-41,TP	
....4	D201	0403-001316 DIODE-ZENER:MTZJ3.0A,2.85-3.07V,500mW,DO	
....4	D202	0401-000005 DIODE-SWITCHING:1N4148,100V,200mA,DO-35,	
....4	D203	0401-000005 DIODE-SWITCHING:1N4148,100V,200mA,DO-35,	
....4	D204	0401-000005 DIODE-SWITCHING:1N4148,100V,200mA,DO-35,	
....4	D205	0403-001319 DIODE-ZENER:MTZJ4.7C,4.68-4.93V,500mW,DO	
....4	D206	0401-000005 DIODE-SWITCHING:1N4148,100V,200mA,DO-35,	
....4	D207	0401-000005 DIODE-SWITCHING:1N4148,100V,200mA,DO-35,	
....4	D208	0402-000132 DIODE-RECTIFIER:1N4004,400V,1A,DO-41,TP	
....4	D210	0403-000720 DIODE-ZENER:MTZJ9.1B,9.1V,8.57-9.01V,500	
....4	D299	0403-001211 DIODE-ZENER:MTZJ12B,11.44-12.03V,500MW,D	
....4	D301	0402-001105 DIODE-RECTIFIER:ERB43-04SV1,400V,1.0A,-,	
....4	D302	0403-001211 DIODE-ZENER:MTZJ12B,11.44-12.03V,500MW,D	
....4	D401	0402-000132 DIODE-RECTIFIER:1N4004,400V,1A,DO-41,TP	
....4	D402	0402-000132 DIODE-RECTIFIER:1N4004,400V,1A,DO-41,TP	
....4	D403	0402-001105 DIODE-RECTIFIER:ERB43-04SV1,400V,1.0A,-,	
....4	D404	0402-001105 DIODE-RECTIFIER:ERB43-04SV1,400V,1.0A,-,	
....4	D405	0402-001105 DIODE-RECTIFIER:ERB43-04SV1,400V,1.0A,-,	
....4	D407	0402-001105 DIODE-RECTIFIER:ERB43-04SV1,400V,1.0A,-,	
....4	D601	0401-000005 DIODE-SWITCHING:1N4148,100V,200mA,DO-35,	
....4	D701	0403-001211 DIODE-ZENER:MTZJ12B,11.44-12.03V,500MW,D	
△	D801S	0402-001111 DIODE-RECTIFIER:1N5397GP,600V,1.5A,DO-20	
....4	D802	0402-000540 DIODE-RECTIFIER:RU20A,600V,1.5A,-,TP	
△	D802S	0402-001111 DIODE-RECTIFIER:1N5397GP,600V,1.5A,DO-20	
....4	D803	0402-001105 DIODE-RECTIFIER:ERB43-04SV1,400V,1.0A,-,	
△	D803S	0402-001111 DIODE-RECTIFIER:1N5397GP,600V,1.5A,DO-20	
....4	D804	0403-001211 DIODE-ZENER:MTZJ12B,11.44-12.03V,500MW,D	
△	D804S	0402-001111 DIODE-RECTIFIER:1N5397GP,600V,1.5A,DO-20	
....4	D805	0402-001111 DIODE-RECTIFIER:1N5397GP,600V,1.5A,DO-20	
....4	D806	0401-000005 DIODE-SWITCHING:1N4148,100V,200mA,DO-35,	
....4	D855	0403-000508 DIODE-ZENER:MTZJ5.6B,5.6V,5.45-5.73V,500	
....4	D856	0403-000508 DIODE-ZENER:MTZJ5.6B,5.6V,5.45-5.73V,500	
....4	D901	0401-000005 DIODE-SWITCHING:1N4148,100V,200mA,DO-35,	
....4	D902	0403-000508 DIODE-ZENER:MTZJ5.6B,5.6V,5.45-5.73V,500	
....4	D903	0401-000005 DIODE-SWITCHING:1N4148,100V,200mA,DO-35,	
....4	D904	0401-000005 DIODE-SWITCHING:1N4148,100V,200mA,DO-35,	

Loc. No.	Code No.	Description ; Specification	Remark
....4	D905	0403-000508 DIODE-ZENER:MTZJ5.6B,5.6V,5.45-5.73V,500	
....4	D906	0403-000508 DIODE-ZENER:MTZJ5.6B,5.6V,5.45-5.73V,500	
....4	D907	0401-000005 DIODE-SWITCHING:1N4148,100V,200mA,DO-35,	
....4	DS602	0403-001325 DIODE-ZENER:MTZJ15C,14.35-15.09V,500mW,D	
....4	DS603	0403-001325 DIODE-ZENER:MTZJ15C,14.35-15.09V,500mW,D	
....4	DZ201	0403-001211 DIODE-ZENER:MTZJ12B,11.44-12.03V,500MW,D	
....4	DZ202	0403-001211 DIODE-ZENER:MTZJ12B,11.44-12.03V,500MW,D	
....4	DZ203	0403-001211 DIODE-ZENER:MTZJ12B,11.44-12.03V,500MW,D	
....4	DZ204	0403-001211 DIODE-ZENER:MTZJ12B,11.44-12.03V,500MW,D	
....4	DZ205	0403-001211 DIODE-ZENER:MTZJ12B,11.44-12.03V,500MW,D	
....4	DZ206	0403-001211 DIODE-ZENER:MTZJ12B,11.44-12.03V,500MW,D	
....4	DZ207	0403-001211 DIODE-ZENER:MTZJ12B,11.44-12.03V,500MW,D	
....4	DZ208	0403-001211 DIODE-ZENER:MTZJ12B,11.44-12.03V,500MW,D	
....4	DZ209	0403-001211 DIODE-ZENER:MTZJ12B,11.44-12.03V,500MW,D	
....4	DZ601	0403-000719 DIODE-ZENER:MTZJ15B,7.5V,7.07-7.45V,500	
....4	DZ602	0403-001327 DIODE-ZENER:MTZJ18A,16.22-17.06V,500mW,D	
....4	DZ603	0403-001327 DIODE-ZENER:MTZJ18A,16.22-17.06V,500mW,D	
....4	DZ610	0403-000720 DIODE-ZENER:MTZJ9.1B,9.1V,8.57-9.01V,500	
....4	DZ802	0403-001327 DIODE-ZENER:MTZJ18A,16.22-17.06V,500mW,D	
....4	DZ806	0403-001318 DIODE-ZENER:MTZJ4.3B,4.17-4.43V,500mW,DO	
....4	DZ808	0403-000699 DIODE-ZENER:TPZ27B,27V,27-30.8V,1W,DO-41	
....4	DZ901	0403-000508 DIODE-ZENER:MTZJ5.6B,5.6V,5.45-5.73V,500	
....4	DZ902	0403-000508 DIODE-ZENER:MTZJ5.6B,5.6V,5.45-5.73V,500	
....4	DZ903	0403-001319 DIODE-ZENER:MTZJ4.7C,4.68-4.93V,500mW,DO	
....4	DZ904	0403-000508 DIODE-ZENER:MTZJ5.6B,5.6V,5.45-5.73V,500	
....4	F801A	3602-000114 FUSE-HOLDER:-,30mohm	
....4	F801B	3602-000114 FUSE-HOLDER:-,30mohm	
△	FA801S	3601-001086 FUSE-AXIAL LEAD:125V,5A,FAST-ACTING,GLAS	
....4	L102	2701-000178 INDUCTOR-AXIAL:33uH,10%,3x7mm	
....4	L152	2701-000202 INDUCTOR-AXIAL:560nH,10%,2.5x3.4mm	
....4	L201	AA26-10004K TRANS-IF:-,7MG,SIF,11.5uH,7mm,100pF,4.8	
....4	L202	2701-000111 INDUCTOR-AXIAL:100uH,10%,2.5x3.4mm	
....4	L203	2701-000158 INDUCTOR-AXIAL:22uH,10%,2.5x3.4mm	
....4	L204	2701-000207 INDUCTOR-AXIAL:56uH,5%,2.5x3.4mm	
....4	L205	AA26-10004C TRANS-IF:-,7MG,VIF,0.37uH,7mm,27pF,52.3	
....4	L206	2701-000111 INDUCTOR-AXIAL:100uH,10%,2.5x3.4mm	
....4	L208	2701-000114 INDUCTOR-AXIAL:10uH,10%,2.5x3.4mm	
....4	L301	2701-000116 INDUCTOR-AXIAL:10uH,10%,4.2x9.8mm	
....4	L402	2701-001032 INDUCTOR-AXIAL:100uH,10%,5x14mm	
....4	L501	2701-000184 INDUCTOR-AXIAL:4.7uH,10%,2.5x3.4mm	
....4	L502	2701-000184 INDUCTOR-AXIAL:4.7uH,10%,2.5x3.4mm	
....4	L503	2701-000184 INDUCTOR-AXIAL:4.7uH,10%,2.5x3.4mm	
....4	L602	2701-000158 INDUCTOR-AXIAL:22uH,10%,2.5x3.4mm	
....4	L802	3301-001223 CORE-FERRITE BEAD:AA,62ohm,3.5x0.8x5mm,-	
....4	L803	2901-000297 FILTER-EMI ON BOARD:-,3A,-,3.5x5,TP-	
....4	L804	3301-001223 CORE-FERRITE BEAD:AA,62ohm,3.5x0.8x5mm,-	
....4	L805	2901-000297 FILTER-EMI ON BOARD:-,3A,-,3.5x5,TP-	
....4	L810	2701-001032 INDUCTOR-AXIAL:100uH,10%,5x14mm	
....4	L811	2901-000297 FILTER-EMI ON BOARD:-,3A,-,3.5x5,TP-	
....4	L901	2701-000114 INDUCTOR-AXIAL:10uH,10%,2.5x3.4mm	
....4	L902	2701-000114 INDUCTOR-AXIAL:10uH,10%,2.5x3.4mm	
....4	L999	2701-000115 INDUCTOR-AXIAL:10uH,10%,3x7mm	
....4	Q151	0501-000436 TR-SMALL SIGNAL:KTC3197,NPN,625mW,TO-92,	
....4	Q201	0501-002183 TR-SMALL SIGNAL:KTC9014,NPN,625mW,TO-92,	
....4	Q202	0501-002183 TR-SMALL SIGNAL:KTC9014,NPN,625mW,TO-92,	
....4	Q203	0501-002183 TR-SMALL SIGNAL:KTC9014,NPN,625mW,TO-92,	
....4	Q402	0501-000369 TR-SMALL SIGNAL:KSC2331-Y,NPN,1000mW,TO-	
....4	Q501	0501-002014 TR-SMALL SIGNAL:KSC2330-R,NPN,1W,TO-92L,	
....4	Q502	0501-002014 TR-SMALL SIGNAL:KSC2330-R,NPN,1W,TO-92L,	
....4	Q503	0501-002014 TR-SMALL SIGNAL:KSC2330-R,NPN,1W,TO-92L,	
....4	Q601	0501-002183 TR-SMALL SIGNAL:KTC9014,NPN,625mW,TO-92,	
....4	Q801	1203-001217 IC-POS:ADJUST REG:431,TO-92,3P,4.58MIL	
....4	Q903	0501-002183 TR-SMALL SIGNAL:KTC9014,NPN,625mW,TO-92,	
....4	QU01	0504-000123 TR-DIGITAL:KSR1010,NPN,300mW,10K,TO-92,T	
....4	R101	2001-001155 R-CARBON(S):5.6KOHM,5%,1/2W,AA,TP,2.4X6.	
....4	R102	2001-001000 R-CARBON:82KOHM,5%,1/8W,AA,TP,1.8X3.2MM	
....4	R104	2003-000592 R-METAL OXIDE(S):22ohm,5%,2W,AF,TP,4x12m	
....4	R105	2003-000592 R-METAL OXIDE(S):22ohm,5%,2W,AF,TP,4x12m	
....4	R106	2003-000664 R-METAL OXIDE(S):33ohm,5%,2W,AF,TP,4x12m	
....4	R107	2003-000664 R-METAL OXIDE(S):33ohm,5%,2W,AF,TP,4x12m	
....4	R152	2001-000221 R-CARBON:1.2KOHM,5%,1/8W,AA,TP,1.8X3.2M	
....4	R153	2001-000734 R-CARBON:4.7KOHM,5%,1/8W,AA,TP,1.8X3.2M	
....4	R154	R-CARBON:470OHM,5%,1/8W,AA,TP,1.8X3.2MM	
....4	R155	2001-000281 R-CARBON:100OHM,5%,1/8W,AA,TP,1.8X3.2MM	
....4	R156	2001-000793 R-CARBON:47OHM,5%,1/8W,AA,TP,1.8X3.2MM	
....4	R157	2001-000666 R-CARBON:33OHM,5%,1/8W,AA,TP,1.8X3.2MM	
....4	R158	2001-000007 R-CARBON:3KOHM,5%,1/8W,AA,TP,1.8X3.2MM	

Loc. No.	Code No.	Description ; Specification	Remark
....4	R159	2001-000007 R-CARBON:3KOHM,5%,1/8W,AA,TP,1.8X3.2MM	
....4	R201	2001-000429 R-CARBON:1KOHM,5%,1/8W,AA,TP,1.8X3.2MM	
....4	R202	2001-000734 R-CARBON:4.7KOHM,5%,1/8W,AA,TP,1.8X3.2M	
....4	R203	2001-000734 R-CARBON:4.7KOHM,5%,1/8W,AA,TP,1.8X3.2M	
....4	R204	2001-000221 R-CARBON:1.2KOHM,5%,1/8W,AA,TP,1.8X3.2M	
....4	R205	2001-000221 R-CARBON:1.2KOHM,5%,1/8W,AA,TP,1.8X3.2M	
....4	R206	2001-000221 R-CARBON:1.2KOHM,5%,1/8W,AA,TP,1.8X3.2M	
....4	R207	2001-001111 R-CARBON(S):2400HM,5%,1/2W,AA,TP,2.4X6.4	
....4	R208	2001-000515 R-CARBON:220OHM,5%,1/8W,AA,TP,1.8X3.2MM	
....4	R209	2001-000515 R-CARBON:220OHM,5%,1/8W,AA,TP,1.8X3.2MM	
....4	R210	2001-000515 R-CARBON:220OHM,5%,1/8W,AA,TP,1.8X3.2MM	
....4	R211	2001-000281 R-CARBON:100OHM,5%,1/8W,AA,TP,1.8X3.2MM	
....4	R212	2001-000281 R-CARBON:100OHM,5%,1/8W,AA,TP,1.8X3.2MM	
....4	R213	2001-000837 R-CARBON:51KOHM,5%,1/8W,AA,TP,1.8X3.2MM	
....4	R214	2001-000331 R-CARBON:12KOHM,5%,1/8W,AA,TP,1.8X3.2MM	
....4	R215	2001-000331 R-CARBON:12KOHM,5%,1/8W,AA,TP,1.8X3.2MM	
....4	R218	2001-000591 R-CARBON:3.3KOHM,5%,1/8W,AA,TP,1.8X3.2M	
....4	R219	2001-000674 R-CARBON:360OHM,5%,1/8W,AA,TP,1.8X3.2MM	
....4	R222	2001-000773 R-CARBON:470KOHM,5%,1/8W,AA,TP,1.8X3.2M	
....4	R223	2001-000780 R-CARBON:470OHM,5%,1/8W,AA,TP,1.8X3.2M	
....4	R226	2001-000508 R-CARBON:220KOHM,5%,1/8W,AA,TP,1.8X3.2M	
....4	R227	2001-000508 R-CARBON:220KOHM,5%,1/8W,AA,TP,1.8X3.2M	
....4	R228	2001-000258 R-CARBON:1.8KOHM,5%,1/8W,AA,TP,1.8X3.2M	
....4	R229	2001-000258 R-CARBON:1.8KOHM,5%,1/8W,AA,TP,1.8X3.2M	
....4	R230	2001-000591 R-CARBON:3.3KOHM,5%,1/8W,AA,TP,1.8X3.2M	
....4	R231	2001-000660 R-CARBON:33KOHM,5%,1/8W,AA,TP,1.8X3.2MM	
....4	R233	2001-000011 R-CARBON:75KOHM,5%,1/8W,AA,TP,1.8X3.2MM	
....4	R234	2001-000405 R-CARBON:180OHM,5%,1/8W,AA,TP,1.8X3.2MM	
....4	R235	2004-000195 R-METAL:100Kohm,1%,1/8W,AA,TP,1.8x3.2m	
....4	R236	2001-000548 R-CARBON:270KOHM,5%,1/8W,AA,TP,1.8X3.2M	
....4	R237	2001-000290 R-CARBON:10KOHM,5%,1/8W,AA,TP,1.8X3.2MM	
....4	R239	2001-000947 R-CARBON:7.5KOHM,5%,1/8W,AA,TP,1.8X3.2M	
....4	R240	2001-000577 R-CARBON:2KOHM,5%,1/8W,AA,TP,1.8X3.2MM	
....4	R241	2001-000429 R-CARBON:1KOHM,5%,1/8W,AA,TP,1.8X3.2MM	
....4	R242	2001-000221 R-CARBON:1.2KOHM,5%,1/8W,AA,TP,1.8X3.2M	
....4	R251	2001-000591 R-CARBON:3.3KOHM,5%,1/8W,AA,TP,1.8X3.2M	
....4	R252	2001-000591 R-CARBON:3.3KOHM,5%,1/8W,AA,TP,1.8X3.2M	
....4	R253	2001-000591 R-CARBON:3.3KOHM,5%,1/8W,AA,TP,1.8X3.2M	
....4	R257	2008-000252 R-FUSIBLE(S):0.47ohm,10%,1/2W,AF,TP,2.5x	
....4	R301	2001-000429 R-CARBON:1KOHM,5%,1/8W,AA,TP,1.8X3.2MM	
....4	R302	2001-000003 R-CARBON:330ohm,5%,1/8W,AA,TP,1.8x3.2mm	
....4	R303	2001-000319 R-CARBON:120KOHM,5%,1/8W,AA,TP,1.8X3.2M	
....4	R304	2001-001089 R-METAL OXIDE(S):1.8ohm,5%,1W,AF,TP,3.9x	
....4	R305	2001-000947 R-CARBON:7.5KOHM,5%,1/8W,AA,TP,1.8X3.2M	
....4	R306	2001-000380 R-CARBON:160KOHM,5%,1/8W,AA,TP,1.8X3.2M	
....4	R307	2001-000679 R-CARBON:36KOHM,5%,1/8W,AA,TP,1.8X3.2MM	
....4	R308	2001-000702 R-CARBON:39KOHM,5%,1/8W,AA,TP,1.8X3.2MM	
....4	R309	2003-000649 R-METAL OXIDE(S):330ohm,5%,1W,AF,TP,3.3x	
....4	R401	2001-000780 R-CARBON:470OHM,5%,1/8W,AA,TP,1.8X3.2MM	
....4	R402	2001-000515 R-CARBON:220OHM,5%,1/8W,AA,TP,1.8X3.2MM	
....4	R403	2001-001114 R-CARBON(S):270OHM,5%,1/2W,AA,TP,2.4X6.4	
....4	R404	2001-001136 R-CARBON(S):360HM,5%,1/2W,AA,TP,2.4X6.4M	
....4	R405	2003-000540 R-METAL OXIDE(S):1Kohm,5%,2W,AF,TP,4x12mm	
....4	R406	2008-001107 R-FUSIBLE(S):300ohm,5%,2W,AG,TP,3.9x12mm	
....4	R407	2003-002102 R-METAL OXIDE:68Kohm,5%,2W,AF,TP,4x12mm	
....4	R409	2008-000253 R-FUSIBLE(S):0.47ohm,5%,1W,AF,TP,3.9x10mm	
....4	R410	2008-000206 R-FUSIBLE(S):1ohm,5%,1/2W,AF,TP,2.5x6.5mm	
....4	R411	2004-001891 R-METAL(S):133Kohm,1%,1/2W,AA,TP,2.5x6.5	
....4	R412	2004-001405 R-METAL(S):79Kohm,1%,1/2W,AA,TP,2.4x6.4mm	
....4	R415	2003-000784 R-METAL OXIDE(S):7.5Kohm,5%,2W,AF,TP,4x1	
....4	R416	2001-000022 R-CARBON(S):33OHM,5%,1/2W,AA,TP,2.4X6.4M	
....4	R417	2001-001410 R-CARBON(S):43OHM,5%,1/2W,AA,TP,2.4X6.4M	
....4	R444	2001-001099 R-CARBON(S):2.7KOHM,5%,1/2W,AA,TP,2.4X6.4	
....4	R501	2001-000007 R-CARBON:3KOHM,5%,1/8W,AA,TP,1.8X3.2MM	
....4	R502	2001-000007 R-CARBON:3KOHM,5%,1/8W,AA,TP,1.8X3.2MM	
....4	R503	2001-000007 R-CARBON:3KOHM,5%,1/8W,AA,TP,1.8X3.2MM	
....4	R504	2003-002170 R-METAL OXIDE(S):15Kohm,5%,2W,AG,TP,3.9x	
....4	R505	2003-002170 R-METAL OXIDE(S):15Kohm,5%,2W,AG,TP,3.9x	
....4	R506	2003-002170 R-METAL OXIDE(S):15Kohm,5%,2W,AG,TP,3.9x	
....4	R507	2001-000281 R-CARBON:100OHM,5%,1/8W,AA,TP,1.8X3.2MM	
....4	R508	2001-000281 R-CARBON:100OHM,5%,1/8W,AA,TP,1.8X3.2MM	
....4	R509	2001-000281 R-CARBON:100OHM,5%,1/8W,AA,TP,1.8X3.2MM	
....4	R510	2001-000628 R-CARBON:300OHM,5%,1/8W,AA,TP,1.8X3.2MM	
....4	R511	2001-000628 R-CARBON:300OHM,5%,1/8W,AA,TP,1.8X3.2MM	
....4	R512	2001-000628 R-CARBON:300OHM,5%,1/8W,AA,TP,1.8X3.2MM	
....4	R513	2001-000666 R-CARBON:33OHM,5%,1/8W,AA,TP,1.8X3.2MM	
....4	R514	2001-000666 R-CARBON:33OHM,5%,1/8W,AA,TP,1.8X3.2MM	

Loc. No.	Code No.	Description ; Specification	Remark
....4	R515	2002-001006 R-COMPOSITION:4.7Kohm,5%,1/2W,AA,TP,3.7x	
....4	R517	2001-000666 R-CARBON:33OHM,5%,1/8W,AA,TP,1.8X3.2MM	
....4	R518	2008-001015 R-FUSIBLE(S):1.5ohm,5%,2W,AF,TP,3.9x10mm	
....4	R599	2008-001053 R-FUSIBLE:22ohm,5%,1/2W,AF,TP,2.5x6.5mm	
....4	R601	2001-000429 R-CARBON:1KOHM,5%,1/8W,AA,TP,1.8X3.2MM	
....4	R602	2001-000290 R-CARBON:10KOHM,5%,1/8W,AA,TP,1.8X3.2MM	
....4	R603	2004-000195 R-METAL:100Kohm,1%,1/8W,AA,TP,1.8x3.2m	
....4	R604	2001-000947 R-CARBON:7.5KOHM,5%,1/8W,AA,TP,1.8X3.2M	
....4	R606	2001-000258 R-CARBON:1.8KOHM,5%,1/8W,AA,TP,1.8X3.2M	
....4	R607	2001-000290 R-CARBON:10KOHM,5%,1/8W,AA,TP,1.8X3.2MM	
....4	R610	2001-000793 R-CARBON:47OHM,5%,1/8W,AA,TP,1.8X3.2MM	
....4	R611	2001-000429 R-CARBON:1KOHM,5%,1/8W,AA,TP,1.8X3.2MM	
....4	R701	2001-001187 R-CARBON(S):75OHM,5%,1/2W,AA,TP,2.4X6.4M	
....4	R702	2004-001373 R-METAL(S):100Kohm,1%,1/2W,AA,TP,2.4x6.4	
....4	R801	2001-001150 R-CARBON(S):470KOHM,5%,1/2W,AA,TP,2.4X6.4	
....4	R802	2003-000994 R-METAL OXIDE(S):33Kohm,5%,2W,AF,TP,3.9x	
....4	R803	2003-000994 R-METAL OXIDE(S):33Kohm,5%,2W,AF,TP,3.9x	
....4	R807	2003-000994 R-METAL OXIDE(S):33Kohm,5%,2W,AF,TP,3.9x	
....4	R808	2001-001150 R-CARBON(S):470KOHM,5%,1/2W,AA,TP,2.4X6.4	
....4	R809	2008-000205 R-FUSIBLE(S):10ohm,5%,1/2W,AF,TP,2.5x6.5	
....4	R810A	2008-000261 R-FUSIBLE(S):150ohm,5%,1W,AF,TP,3.9x10mm	
....4	R811	2001-001170 R-CARBON(S):6.8OHM,5%,1/2W,AA,TP,2.4X6.4	
....4	R812	2008-000252 R-FUSIBLE(S):0.47ohm,10%,1/2W,AF,TP,2.5x	
....4	R814	2001-000864 R-CARBON:56KOHM,5%,1/8W,AA,TP,1.8X3.2MM	
....4	R816	2001-001192 R-CARBON(S):820OHM,5%,1/2W,AA,TP,2.4X6.4	
....4	R817	2001-001170 R-CARBON(S):6.8OHM,5%,1/2W,AA,TP,2.4X6.4	
....4	R819	2008-000284 R-FUSIBLE(S):0.1OHM,10%,2W,AF,TP,3.9X10M	
....4	R819A	2008-000284 R-FUSIBLE(S):0.1OHM,10%,2W,AF,TP,3.9X10M	
....4	R820	2001-000019 R-CARBON(S):10OHM,5%,1/2W,AA,TP,2.4X6.4M	
....4	R821	2004-004089 R-METAL(S):123Kohm,1%,1/2W,AA,TP,2.5x6.5	
....4	R823	2001-000109 R-CARBON(S):470OHM,5%,1/2W,AA,TP,2.4X6.4	
....4	R824	2004-001983 R-METAL(S):2.49Kohm,1%,1/2W,AA,TP,2.4x6.4	
....4	R825	2001-001108 R-CARBON(S):22KOHM,5%,1/2W,AA,TP,2.4X6.4	
....4	R852	2004-001371 R-METAL(S):1.5Kohm,1%,1/2W,AA,TP,2.4x6.4	
....4	R853	2004-001390 R-METAL(S):1Kohm,2%,1/2W,AA,TP,2.4x6.4mm	
....4	R854	2001-001125 R-CARBON(S):300KOHM,5%,1/2W,AA,TP,2.4X6.4	
....4	R901	2001-000793 R-CARBON:47OHM,5%,1/8W,AA,TP,1.8X3.2MM	
....4	R902	2001-000429 R-CARBON:1KOHM,5%,1/8W,AA,TP,1.8X3.2MM	
....4	R903	2001-000281 R-CARBON:100OHM,5%,1/8W,AA,TP,1.8X3.2MM	
....4	R904	2001-000281 R-CARBON:100OHM,5%,1/8W,AA,TP,1.8X3.2MM	
....4	R905	2001-000429 R-CARBON:1KOHM,5%,1/8W,AA,TP,1.8X3.2MM	
....4	R906	2001-000472 R-CARBON:2.7KOHM,5%,1/8W,AA,TP,1.8X3.2M	
....4	R907	2001-000995 R-CARBON:820OHM,5%,1/8W,AA,TP,1.8X3.2MM	
....4	R909	2001-000613 R-CARBON:3.9KOHM,5%,1/8W,AA,TP,1.8X3.2M	
....4	R910	2001-000995 R-CARBON:820OHM,5%,1/8W,AA,TP,1.8X3.2MM	
....4	R911	2001-000290 R-CARBON:10KOHM,5%,1/8W,AA,TP,1.8X3.2MM	
....4	R913	2001-000924 R-CARBON:680OHM,5%,1/8W,AA,TP,1.8X3.2MM	
....4	R914	2001-000577 R-CARBON:2KOHM,5%,1/8W,AA,TP,1.8X3.2MM	
....4	R915	2001-000734 R-CARBON:4.7KOHM,5%,1/8W,AA,TP,1.8X3.2M	
....4	R916	2001-000947 R-CARBON:7.5KOHM,5%,1/8W,AA,TP,1.8X3.2M	
....4	R917	2001-000947 R-CARBON:7.5KOHM,5%,1/8W,AA,TP,1.8X3.2M	
....4	R918	2001-000947 R-CARBON:7.5KOHM,5%,1/8W,AA,TP,1.8X3.2M	
....4	R919	2001-000977 R-CARBON:8.2KOHM,5%,1/8W,AA,TP,1.8X3.2M	
....4	R920	2001-001108 R-CARBON(S):22KOHM,5%,1/2W,AA,TP,2.4X6.4	
....4	R921	2001-000290 R-CARBON:10KOHM,5%,1/8W,AA,TP,1.8X3.2MM	
....4	R922	2001-000281 R-CARBON:100OHM,5%,1/8W,AA,TP,1.8X3.2MM	
....4	R923	2001-000281 R-CARBON:100OHM,5%,1/8W,AA,TP,1.8X3.2MM	
....4	R924	2001-000449 R-CARBON:2.2KOHM,5%,1/8W,AA,TP,1.8X3.2M	
....4	R925	2001-000449 R-CARBON:2.2KOHM,5%,1/8W,AA,TP,1.8X3.2M	
....4	R926	2001-000008 R-CARBON:15KOHM,5%,1/8W,AA,TP,1.8X3.2MM	
....4	R927	2001-000290 R-CARBON:10KOHM,5%,1/8W,AA,TP,1.8X3.2MM	
....4	R929	2001-000221 R-CARBON:1.2KOHM,5%,1/8W,AA,TP,1.8X3.2M	
....4	R930	2001-000290 R-CARBON:10KOHM,5%,1/8W,AA,TP,1.8X3.2MM	
....4	R931	2001-000429 R-CARBON:1KOHM,5%,1/8W,AA,TP,1.8X3.2MM	
....4	R932	2001-000290 R-CARBON:10KOHM,5%,1/8W,AA,TP,1.8X3.2MM	
....4	R933	2001-000290 R-CARBON:10KOHM,5%,1/8W,AA,TP,1.8X3.2MM	
....4	R936	2004-000195 R-METAL:100Kohm,1%,1/8W,AA,TP,1.8x3.2m	
....4	R937	2001-000290 R-CARBON:10KOHM,5%,1/8W,AA,TP,1.8X3.2MM	
....4	R938	2001-000429 R-CARBON:1KOHM,5%,1/8W,AA,TP,1.8X3.2MM	
....4	R939	2001-000449 R-CARBON:2.2KOHM,5%,1/8W,AA,TP,1.8X3.2M	
....4	R940	2001-000708 R-CARBON:39OHM,5%,1/8W,AA,TP,1.8X3.2MM	
....4	R941	2001-000281 R-CARBON:100OHM,5%,1/8W,AA,TP,1.8X3.2MM	
....4	R951	2001-000734 R-CARBON:4.7KOHM,5%,1/8W,AA,TP,1.8X3.2M	
....4	R952	2001-000472 R-CARBON:2.7KOHM,5%,1/8W,AA,TP,1.8X3.2M	
....4	R988	2001-000734 R-CARBON:4.7KOHM,5%,1/8W,AA,TP,1.8X3.2M	
....4	RH01	2002-001006 R-COMPOSITION:4.7Kohm,5%,1/2W,AA,TP,3.7x	
....4	RH02	2002-001006 R-COMPOSITION:4.7Kohm,5%,1/2W,AA,TP,3.7x	

Loc. No.	Code No.	Description ; Specification	Remark
△ ...4	RR401S	2004-001390 R-METAL(S);1Kohm,2%,1/2W,AA,TP,2.4x6.4mm	
...4	RS601	2001-000734 R-CARBON:4.7KOHM,5%,1/8W,AA,TP,1.8X3.2MM	
...4	RS602	2001-000734 R-CARBON:4.7KOHM,5%,1/8W,AA,TP,1.8X3.2M	
...4	RS604	2001-000258 R-CARBON:1.8KOHM,5%,1/8W,AA,TP,1.8X3.2M	
...4	RS605	2001-000290 R-CARBON:10KOHM,5%,1/8W,AA,TP,1.8X3.2MM	
...4	RS606	2001-000429 R-CARBON:1KOHM,5%,1/8W,AA,TP,1.8X3.2MM	
...4	RS607	2004-001373 R-METAL(S);100Kohm,1%,1/2W,AA,TP,2.4x6.4	
...4	RS613	2004-000195 R-METAL:100Kohm,1%,1/8W,AA,TP,1.8x3.2m	
...4	RS614	2001-000281 R-CARBON:100OHM,5%,1/8W,AA,TP,1.8X3.2MM	
...4	RU02	2001-000780 R-CARBON:470OHM,5%,1/8W,AA,TP,1.8X3.2MM	
...4	RU03	2001-000780 R-CARBON:470OHM,5%,1/8W,AA,TP,1.8X3.2MM	
...4	RU06	2001-000397 R-CARBON:180KOHM,5%,1/8W,AA,TP,1.8X3.2M	
...4	RU07	2001-001062 R-CARBON(S);10MOHM,5%,1/2W,AA,TP,2.4X6.4	
...4	RU10	2001-000780 R-CARBON:470OHM,5%,1/8W,AA,TP,1.8X3.2MM	
△ ...4	RY801S	2002-001013 R-COMPOSITION:4.7Mohm,5%,1/2W,AA,TP,3.7x	
...4	SW901	3404-000244 SWITCH-TACT:15V,20mA,90-170gf,7.5x7mm,SP	
...4	SW902	3404-000244 SWITCH-TACT:15V,20mA,90-170gf,7.5x7mm,SP	
...4	SW903	3404-000244 SWITCH-TACT:15V,20mA,90-170gf,7.5x7mm,SP	
...4	SW904	3404-000244 SWITCH-TACT:15V,20mA,90-170gf,7.5x7mm,SP	
...4	SW905	3404-000244 SWITCH-TACT:15V,20mA,90-170gf,7.5x7mm,SP	
△ ...4	VX801S	1405-000152 VARISTOR:560V,2500A,14x8.5mm,TP	
...4	X201	2801-003725 CRYSTAL-UNIT:3.579545MHz,20ppm,28-AAM,16	
...4	Z201	2903-001022 FILTER-CERAMIC:BR,4.5MHz,-,-,-,TP,-	
...4	Z601	2903-000135 FILTER-CERAMIC:BP,4.5MHz,120KHz,6dB,-,TP	
..2	AA65-30009A	CLAMP-FBT:ABS,V0,BLK,-,-,-	S.N.A
..2	AA65-30018A	CLAMP-WIRE:NYLON-66,-,-,DATL-600,DONG-A,	S.N.A
..2	AA65-30104C	CLAMP-WIRE:NYLON 66,V2,NTR,W1 Z4,ALL MOD	S.N.A

ASSY-PCB,SOUND

1	*	AA95-00437A	ASSY-PCB,SOUND:-,CT5066BZG,K15A,-,-,TURB	
..2	CNA01	3711-002702	CONNECTOR-HEADER:NOWALL,4P,1R,2.5mm,ANGL	
..2	CNA02	3711-002703	CONNECTOR-HEADER:NOWALL,5P,1R,2.5mm,ANGL	
..2	CNA03	AA61-10068A	BRACKET-PCB:M2160,SPT,TO.3,-,-,-,-	S.N.A
..2	ICA02	1204-001455	IC-VOLUME/TONE CONT.:TDA7449,DIP,20P,300	
..2		AA41-00072A	PCB-STEREO MODULE:K15A,1L,FR-1,245X245X1	
..2		0202-000187	SOLDER-WIRE FLUX:-,RS60S,D1.2,63Sn/37Pb	S.N.A
..2		AA99-20060B	ASSY-PCB SUB,AUTO: AA95-00437A ,V	S.N.A
...3	CA01	2401-000480	C-AL:10uF,20%,50V,GP,TP,5x11,5	
...3	CA02	2401-000603	C-AL:1uF,20%,50V,GP,TP,5x11,5	
...3	CA03	2401-000603	C-AL:1uF,20%,50V,GP,TP,5x11,5	
...3	CA04	2401-000603	C-AL:1uF,20%,50V,GP,TP,5x11,5	
...3	CA05	2401-000603	C-AL:1uF,20%,50V,GP,TP,5x11,5	
...3	CA06	2305-000708	C-FILM,MPEF:150nF,5%,100V,TP,16.5x10.3x5	
...3	CA07	2305-000355	C-FILM,MPEF:330nF,5%,63V,TP,-,5mm	
...3	CA08	2305-000355	C-FILM,MPEF:330nF,5%,63V,TP,-,5mm	
...3	CA09	2305-000708	C-FILM,MPEF:150nF,5%,100V,TP,16.5x10.3x5	
...3	CA10	2301-000289	C-FILM,PEF:5.6nF,5%,50V,TP,7x6x3,5	
...3	CA11	2301-000289	C-FILM,PEF:5.6nF,5%,50V,TP,7x6x3,5	
...3	CA12	2401-000027	C-AL:4.7uF,20%,50V,GP,TP,5x11,5	
...3	CA13	2401-000027	C-AL:4.7uF,20%,50V,GP,TP,5x11,5	
...3	CA32	2202-000121	C-CERAMIC,MLC-AXIAL:100pF,10%,50V,Y5P,TP	
...3	DA01	0403-001211	DIODE-ZENER:MTZJ12B,11.44-12.03V,500MW,D	
...3	QA01	0501-000389	TR-SMALL SIGNAL,KSC815,NPN,400mW,TO-92,T	
...3	RA01	2001-000449	R-CARBON:2.2KOHM,5%,1/8W,AA,TP,1.8X3.2M	
...3	RA05	2001-000577	R-CARBON:2KOHM,5%,1/8W,AA,TP,1.8X3.2MM	
...3	RA06	2001-000577	R-CARBON:2KOHM,5%,1/8W,AA,TP,1.8X3.2MM	
...3	RA07	2001-000281	R-CARBON:100OHM,5%,1/8W,AA,TP,1.8X3.2MM	
...3	RA08	2001-000281	R-CARBON:100OHM,5%,1/8W,AA,TP,1.8X3.2MM	
...3	RA18	2001-000674	R-CARBON:360OHM,5%,1/8W,AA,TP,1.8X3.2MM	
...3	RA19	2001-000281	R-CARBON:100OHM,5%,1/8W,AA,TP,1.8X3.2MM	

ASSY-PCB, A/V SIDE

1	*	AA95-01131A	ASSY-PCB, A/V SIDE:,21D8,K15A,NTSC	
..2	CE01	2401-000480	C-AL:10uF,20%,50V,GP,TP,5x11,5	
..2	CE02	2401-000480	C-AL:10uF,20%,50V,GP,TP,5x11,5	
..2	CN705A	AA39-20071D	LEAD CONNECTOR-ASSY:,12P,YBNH025-12,6709	
..2	JE601	3722-000143	JACK-PHONE:1P(VER),3.4mm,AG,BLK,NO	
..2	JR01	3722-001031	JACK-RCA:3P,3.6MM,#18,AU	
..2	RE01	2001-001077	R-CARBON(S):150OHM,5%,1/2W,AA,TP,2.4X6.4	

Loc. No.	Code No.	Description ; Specification	Remark
..2	RE02	2001-001077 R-CARBON(S):150OHM,5%,1/2W,AA,TP,2.4X6.4	
..2	AA41-00414A	PCB-SIDE A/V:CT21D8,FR-1,1L,A,1.6T,245x2	S.N.A
..2	0202-000187	SOLDER-WIRE FLUX:-,RS60S,D1.2,63Sn/37Pb	S.N.A

ASSY CABINET FRONT

1	*	AA91-00589E	ASSY CABINET FRONT:,21D8 NT-ASIA,(SPK)SV	S.N.A
..2	KC+CF	6003-001026	SCREW-TAPTITE:RH,+,B,M4,L15,ZPC(BLK),SWR	
..2	POWER	AA61-60003J	SPRING-CS:-,SUS304,0.5,OD6,H12,N7,-,-,-	
..2	SPK+CF	6003-001019	SCREW-TAPTITE:RH,+,B,M4,L12,ZPC(BLK),SWR	
..2	WIN+CF	6003-001026	SCREW-TAPTITE:RH,+,B,M4,L15,ZPC(BLK),SWR	
..2		AA64-01426B	WINDOW REMOCON:21D8,PC,-,-,-,VOILET,-,-	
..2		AA64-01425B	KNOB POWER:21D8,ABS,-,G3676,SV907P,HB,-,	
..2		AA64-70123B	BADGE-BRAND:AL,R2000,SILVER,L=50,SAMSUNG	
..2		AA65-30105A	CLAMP-WIRE:NYLON 66,V2,NTR,15MM,ALL MODE	S.N.A
..2		AA96-10146C	ASSY SPEAKER:-,8ohm,5W,3001-000274,350/7	
...3		3001-000274	SPEAKER:5W,8ohm,90dB,160Hz	
...3		AA39-20505M	LEAD CONNECTOR-ASSY:,4PYSH025-04,REC,35	
..2		AA64-01423C	CABINET FRONT:21D8 NT-ASIA,S907P+D004P E	
..2		AA61-40113A	STOPPER-PCB:501H,HIPS,NTR,HB,-,-	
..2		AA64-01011B	INDICATOR LED:29D8,ACRYL,-,CLR,-,-,-	S.N.A
..2		AA64-01012B	KNOB CONTROL:29D8,ABS,-,G3676,SV-907P,HB	
..2		AA64-01309M	INLAY AV:PS SHEET,21D8,T0.3,K15A L/S	

ASSY CABINET

1	*	AA90-00691C	ASSY CABINET:21D8,CT21D8L6X/XTC	S.N.A
..2	AV+CF	6002-000522	SCREW-TAPPING:TH,+,2,M4,L15,ZPC(BLK),SWR	
..2	BACK	AA60-00091A	SPACER-FELT:-,FELT,150X10,-,-,BLK,T0.35,	S.N.A
..2	CB+CF	AA60-10050T	SCREW-TAPPING:-,SWRCH18A,M4,L20,RH,+,2S,	
..2	CB+JCK	AA60-10050T	SCREW-TAPPING:-,SWRCH18A,M4,L20,RH,+,2S,	
..2	CRT+CF	AA60-10050R	SCREW-ASSY:-,SWRCH18A,M5,L31.5,HH,+,WC,-	
..2		AA65-30107A	CLAMP-D,COIL:NYLON 66,V2,NTR,-,20-22 INC	S.N.A
..2		AA63-60004K	SPACER-GUM,CRT:-,NTR RUBBER,-,-,-,BLK,T2	S.N.A
..2		AA64-01422E	CABINET BACK:21D8,HIPS,HB,G4309	
..2		AA64-60385G	INLAY BACK:3E,K15A-1 3PIN S/T,PS SHEET,T	S.N.A
..2		AA65-30008A	CLAMP-CORD:PE,HB,BLK,-,-,-	S.N.A

ASSY-CRT

△ 1	*	AA94-50020B	ASSY-CRT:A51KQJ63X(H),0MG,21,BARE,-,NO	S.N.A
..2		AA63-60028A	SPACER-DY:-,NEOPRENE,-,-,-,BLK,-,-,V0 W1	
..2		AA27-50004K	DEFLECTION-YOKE:-,DST-2192ML(H1),ST-3,A5	
..2		AA27-00002A	MAGNET-CONVERGENCE:-,JH291-SC-OB,29.1MM	
..2		AA03-10027E	CRT-COLOR:-,A51KQJ63X(H),0mg,21,90deg,5	

ASSY-POWER,CORD

△ 1	*	AA96-20112A	ASSY-POWER,CORD:-,EP2/NO,H/C300,KJ10,THA	S.N.A
..2		3811-000401	WIRE-PVC CU-BCWA,300V,ROLL,17/0.16mm,#22	S.N.A
..2		AA39-10006K	POWER-CORD:-,KJ-10,SPT-2 2/18AWG,2400,3P	
..2		AA61-20284A	HOLDER:-,P-CORD,PP,V0,BLK,KE-002	S.N.A

ASSY-TBC,WIRE(P)

1	*	AA98-70014C	ASSY-TBC,WIRE(P):-,21,NTSC,1P,TVI	S.N.A
---	---	-------------	-----------------------------------	-------

ASSY ACCESSORY

1	*	AA94-00386B	ASSY ACCESSORY:CT21S4W6X/XTC,K15A,PHILIP	S.N.A
..2		AA68-00790E	MANUAL USERS:,ENG,W/P100(G),1',A5,K15A,H	S.N.A
..2		AA42-00003A	ANT ROD:-,3S,720mm,ABS,UL/CSA,-	

Loc. No.	Code No.	Description ; Specification	Remark
----------	----------	-----------------------------	--------

..2 AA26-90001E TRANS-MATCHING;-;300ohm/75ohm,NTSC,40-89
...3 2011-001061 RC-NETWORK:1-2Mohm,-;270pF,2,1/2W,2P

Loc. No.	Code No.	Description ; Specification	Remark
----------	----------	-----------------------------	--------

REMOCON

1 * AA59-00077A REMOCON;-;TM59,SZM370PH,25,L/GRAY,SS,E

7-2 CT5038G6X/XAP

Loc. No.	Code No.	Description ; Specification	Remark	Loc. No.	Code No.	Description ; Specification	Remark
ASSY PCB MAIN(OPT)							
1	*	AA94-02364L ASSY PCB MAIN(OPT);CT50386X/XAP,KS2A,PAN	4	C207	2401-001333 C-AL:470nF,20%,50V,GP,TP,5x11,5	
..2	CN501	AA39-20109A LEAD CONNECTOR-ASSY;8P,YBNH025-08,S,400	4	C209	2202-000632 C-CERAMIC,MLC-AXIAL:100nF,20%,50V,Z5U,TP	
..2	CU03	2401-002144 C-AL:47uF,20%,16V,GP,TP,5x11,5	4	C210	2202-000632 C-CERAMIC,MLC-AXIAL:100nF,20%,50V,Z5U,TP	
..2	GT101A	AA39-20010D LEAD CONNECTOR-ASSY;1P,YFH800-01,S,400,	4	C211	2202-000632 C-CERAMIC,MLC-AXIAL:100nF,20%,50V,Z5U,TP	
..2	IC601	AA96-50382C ASSY H/S;-;AA62-30180C,TDA7266M,-	4	C212	2201-000982 C-CERAMIC,DISC:10nF,+80-20%,50V,Y5V,TP,4	
...3	0205-000129	GREASE-SILICON:SC102,JAPAN	S.N.A4	C213	2201-000193 C-CERAMIC,DISC:0.01nF,0.25pF,50V,NPO,TP,	
...3	1201-001600	IC-AUDIO AMP;7266,ZSIP,15P,-,SINGLE,26dB	4	C214	2401-000660 C-AL:2.2uF,20%,50V,GP,TP,5x11,5	
...3	6003-000333	SCREW-TAPTITE,RH,+2S,M3,L10,ZPC(YEL),SW	4	C215	2401-001840 C-AL:100uF,20%,16V,GP,TP,6.3x11,5	
...3	AA62-30180C	HEAT SINK-ES;-;A6063 EXTR.,2,WHT,50MM,-,-	S.N.A4	C218	2301-000395 C-FILM,PEF;18nF,5%,50V,TP,6.5x12.5x3.5mm	
△..2	LC801S	AA27-20003X COIL-DEGAUSSING;-;20,14.4ohm,48T,L2170,	4	C219	2401-000603 C-AL:10uF,20%,50V,GP,TP,5x11,5	
..2	R988	2301-000235 C-FILM,PEF;3.9nF,5%,50V,TP,6.5x3.0x5.5mm	4	C220	2401-000480 C-AL:10uF,20%,50V,GP,TP,5x11,5	
..2	RESET	2301-000383 C-FILM,PEF:10nF,5%,50V,TP,6x7x3.2mm,5mm	4	C221	2401-002462 C-AL:33uF,20%,16V,GP,TP,5x11,5	
△..2	T444S	AA26-30001Y TRANS-FLYBACK;-;FSV-20A001,20,125V	4	C222	2305-000665 C-FILM,MPEF:100nF,5%,63V,TP,7.5x4.0x5.0m	
..2	X901	2801-003224 CRYSTAL-UNIT;32.768KHZ,20PPM,28-AA,Y,12.5	4	C225	2401-000480 C-AL:10uF,20%,50V,GP,TP,5x11,5	
..2		AA65-30018A CLAMP-WIRE-NYLON-66,-,-,DATL-600,DONG-A,	S.N.A4	C226	2401-000603 C-AL:10uF,20%,50V,GP,TP,5x11,5	
..2		AA61-00726B HOLDER-COVER:K15A,NYLON 66,-,-,-,BLK,V2,	4	C227	2305-000665 C-FILM,MPEF:100nF,5%,63V,TP,7.5x4.0x5.0m	
..2		AA65-30009A CLAMP-FBT,ABS,V0,BLK,-,-,-	S.N.A4	C229	2202-000127 C-CERAMIC,MLC-AXIAL:10nF,+80-20%,25V,Y5V	
..2		AA65-30104C CLAMP-WIRE-NYLON 66,V2,NTR,W1 Z4,ALL MOD	S.N.A4	C230	2202-000632 C-CERAMIC,MLC-AXIAL:100nF,20%,50V,Z5U,TP	
..2		AA98-60005V ASSY-SUB,PART,KCT15A,MAIN,-,-	S.N.A4	C231	2401-002144 C-AL:47uF,20%,16V,GP,TP,5x11,5	
..3		0202-000187 SOLDER-WIRE FLUX;-;RS60S,D1.2,63Sn/37Pb	S.N.A4	C232	2401-002144 C-AL:47uF,20%,16V,GP,TP,5x11,5	
..2		AA99-30186C ASSY-PCB ROBOT; AA94-02364L ,ER	S.N.A4	C233	2401-000480 C-AL:10uF,20%,50V,GP,TP,5x11,5	
...3	C801	2401-002219 C-AL:220uF,20%,400V,GP,ST,25x40,10	4	C234	2301-000445 C-FILM,PEF;4.7nF,5%,50V,TP,5.5x7x3mm,5mm	
△...3	CR401S	2306-000255 C-FILM,MPPF;7.4nF,3%,1.6KV,TP,28.5x18.5x	4	C235	2202-000279 C-CERAMIC,MLC-AXIAL:47pF,5%,50V,SL,TP,3.	
△...3	CY801S	2201-000446 C-CERAMIC,DISC:3.3nF,20%,400V,Y5U,TP,15x	4	C236	2202-000127 C-CERAMIC,MLC-AXIAL:10nF,+80-20%,25V,Y5V	
△...3	FP801S	3601-001012 FUSE:250V,4A,SLOW-BLOW,GLASS,5.2x20	4	C237	2202-000791 C-CERAMIC,MLC-AXIAL:150pF,10%,50V,Y5P,TP	
△...3	IC201S	1204-001259 IC-VIDEO SYSTEM;TA1282N,DIP,56P,600MIL,P	4	C301	2301-000016 C-FILM,PEF;22nF,5%,100V,TP,7.2x4.5x9.0mm	
...3	IC301	AA96-50075A ASSY-H/S;-;VERT,AA62-30032A,KA2131,ROBO	S.N.A4	C302	2201-000556 C-CERAMIC,DISC:0.47nF,10%,500V,Y5P,TP,5.	
...4		1204-000475 IC-VIDEO SYSTEM;KA2131,SIP,10P,-,PLASTIC	4	C303	2202-000127 C-CERAMIC,MLC-AXIAL:10nF,+80-20%,25V,Y5V	
...4		6003-000334 SCREW-TAPTITE,RH,+2S,M3,L6,ZPC(YEL),SWR	4	C304	2401-003561 C-AL:1uF,10%,50V,GP,TP,5x11mm,5	
...4		AA62-30032A HEAT SINK-PS;-;SPC-1,T1.0,-,FT-2,V,PRO,-	S.N.A4	C305	2305-000149 C-FILM,MPEF:100nF,5%,100V,TP,12x12.5x6.5	
△...3	IC801S	AA96-00242A ASSY H/S;-;AA62-30186B,KA500765R,-	4	C306	2401-002458 C-AL:1000uF,20%,35V,GP,TP,16x25,7.5	
...4		0205-000129 GREASE-SILICON:SC102,JAPAN	S.N.A4	C308	2301-000310 C-FILM,PEF;68nF,5%,50V,TP,8.0X8.5X4.0X5.	
...4		1203-001932 IC-PWM CONTROLLER;500765,TO-220F,5P,185M	4	C309	2401-000365 C-AL:100uF,20%,50V,WT,TP,10x12.5mm,	
...4		6003-000333 SCREW-TAPTITE,RH,+2S,M3,L10,ZPC(YEL),SW	4	C310	2401-000480 C-AL:10uF,20%,50V,GP,TP,5x11,5	
...4		AA62-30186B HEAT SINK-ES;-,-,SILVER,171J + COVER-H	S.N.A4	C311	2401-001333 C-AL:470nF,20%,50V,GP,TP,5x11,5	
△...3	IC802	1203-001532 IC-POS.I.FIXED REG.;7631,SIP,10P,-,PLASTI	4	C312	2401-003561 C-AL:1uF,10%,50V,GP,TP,5x11mm,5	
...3	IC901	AA13-30020A IC-MCU;Z8933412PSC-R3757,ZSM-354ET1,S	4	C313	2305-000470 C-FILM,MPEF;68nF,5%,100V,TP,-,5mm	
...3	IC902	1103-001212 IC-EEPROM;M24C02-WBN6,256x8Bit,SDIP,8P,3	4	C401	2301-000224 C-FILM,PEF;22nF,5%,50V,TP,7.4x3.9x13mm,5	
...3	JA701	3722-000162 JACK-PIN;2P,3.4mm,SN,BLK,-	4	C405	2305-000704 C-FILM,MPEF:100nF,5%,250V,TP,16.5x10.3x5	
...3	LD901	AA96-00555A ASSY LED GUIDE;-;UEX-LD-030,GREEN	S.N.A4	C406	2201-000556 C-CERAMIC,DISC:0.47nF,10%,500V,Y5P,TP,5.	
△...3	LR401S	AA27-30001B COIL-LINEARLITY;-;195uH,QIC1010,PIO,4,4.	4	C407	2401-001429 C-AL:470uF,20%,50V,GP,TP,13x20,5	
△...3	LX801S	AA29-30001D FILTER-LINE NOISE;SQ1913,-,6.0MH,0.8A,-	4	C408	2201-000556 C-CERAMIC,DISC:0.47nF,10%,500V,Y5P,TP,5.	
△...3	NT801S	1404-001045 THERMISTOR-NTC;4.7ohm,15%,2900K,35.0mW,T	4	C409	2401-001998 C-AL:1000uF,20%,25V,GP,TP,10x20,5mm	
△...3	P801S	1404-001048 THERMISTOR-PTC;7ohm,30%,200/220V,270Vac,	4	C410	2301-000224 C-FILM,PEF;22nF,5%,50V,TP,7.4x3.9x13mm,5	
△...3	PC801S	0604-001038 PHOTO-COUPLER;TR,130-260%,200mW,DIP,4,ST	4	C411	2201-000556 C-CERAMIC,DISC:0.47nF,10%,500V,Y5P,TP,5.	
...3	Q401	0502-001115 TR-POWER;KSC5386,NPN,50W,TO-3PF,ST,8-	4	C412	2401-000927 C-AL:22uF,20%,250V,GP,TP,13x20,5	
...3	RM901	AA59-60001U MODULE-REMOCON;-;ORC-50VF/SR-12V,38KHz,9	4	C413	2401-002268 C-AL:2.2uF,20%,250V,LZ,TP,8X11,5	
△...3	SF101S	2904-001241 FILTER-SAW AV;45.75MHz,SIP5K,ST,14.4dB,M	4	C444	2201-000441 C-CERAMIC,DISC:3.3nF,10%,500V,Y5P,TP,10x	
△...3	SW906	3404-000295 SWITCH-TACT;12VDC,50mA,160gf,8.4X22.7,SP	4	C445	2201-000441 C-CERAMIC,DISC:3.3nF,10%,500V,Y5P,TP,10x	
...3	T401	AA26-50001B TRANS-HORIZ.DRIVE;-;7.1mH,102uH,10-20uH,	4	C501	2202-000863 C-CERAMIC,MLC-AXIAL:560pF,10%,50V,Y5P,TP	
△...3	T801S	AA26-00043A TRANS SWITCHING;-;-;AC90-260V,125/12.5	4	C502	2202-000862 C-CERAMIC,MLC-AXIAL:390pF,10%,50V,Y5P,TP	
△...3	TU01S	AA40-00045A TUNER-F/S;TECC1070PG32A(S),NTSC,TR,181CH	4	C503	2202-000825 C-CERAMIC,MLC-AXIAL:680pF,10%,50V,Y5P,TP	
△...3	V999S	3704-001105 SOCKET-CRT;11P,20PI,26.5PI,NL,-	4	C505	2201-000723 C-CERAMIC,DISC:4.7nF,20%,3KV,Y5U,TP,16x5	
...3	X202	2802-000172 RESONATOR-CERAMIC:503.5KHZ,0.5%,BK,7.0X3	4	C601	2401-001998 C-AL:1000uF,20%,25V,GP,TP,10x20,5mm	
...3		AA99-10181P ASSY-PCB MAIN,AUTO; AA99-30186C ,V	S.N.A4	C602	2301-000383 C-FILM,PEF:10nF,5%,50V,TP,6x7x3.2mm,5mm	
....4	04LOT	AA41-11037H PCB-MAIN;K15A,1L,CEM-1,245x245x1.6T,1A,	S.N.A4	C603	2401-000603 C-AL:1uF,20%,50V,GP,TP,5x11,5	
....4	C101	2202-000127 C-CERAMIC,MLC-AXIAL:10nF,+80-20%,25V,Y5V	4	C604	2401-000603 C-AL:1uF,20%,50V,GP,TP,5x11,5	
....4	C102	2401-000660 C-AL:2.2uF,20%,50V,GP,TP,5x11,5	4	C611	2202-000279 C-CERAMIC,MLC-AXIAL:47pF,5%,50V,SL,TP,3.	
....4	C104	2202-000127 C-CERAMIC,MLC-AXIAL:10nF,+80-20%,25V,Y5V	4	C612	2202-000279 C-CERAMIC,MLC-AXIAL:47pF,5%,50V,SL,TP,3.	
....4	C108	2401-000480 C-AL:10uF,20%,50V,GP,TP,5x11,5	4	C701	2305-000665 C-FILM,MPEF:100nF,5%,63V,TP,7.5x4.0x5.0m	
....4	C110	2401-002594 C-AL:220uF,20%,16V,GP,TP,8x11.5,5	4	C702	2401-000471 C-AL:10uF,20%,50V,BP,TP,5x11,5mm	
....4	C151	2202-000127 C-CERAMIC,MLC-AXIAL:10nF,+80-20%,25V,Y5V	4	C703	2202-000183 C-CERAMIC,MLC-AXIAL:2.2NF,20%,16V,Y5R,TP	
....4	C153	2202-000127 C-CERAMIC,MLC-AXIAL:10nF,+80-20%,25V,Y5V	4	C705	2202-000183 C-CERAMIC,MLC-AXIAL:2.2NF,20%,16V,Y5R,TP	
....4	C201	2201-000292 C-CERAMIC,DISC:1nF,10%,50V,Y5P,TP,5x3.5,	4	C802	2201-000119 C-CERAMIC,DISC:100nF,+80-20%,50V,Y5V,TP,	
....4	C202	2401-001333 C-AL:470nF,20%,50V,GP,TP,5x11,5	4	C803	2301-001435 C-FILM,PPF;1.5nF,5%,1.2kV,TP,15x8x12.5mm	
....4	C203	2401-002144 C-AL:47uF,20%,16V,GP,TP,5x11,5	4	C805	2201-000991 C-CERAMIC,DISC:0.56nF,10%,2KV,Y5P,TP,7.5	
....4	C204	2301-000188 C-FILM,PEF:1nF,5%,100V,TP,10.5x12.5x6.5,	4	C806	2401-000262 C-AL:1000uF,20%,160V,HR,TP,16x25,7.5	
....4	C205	2401-001333 C-AL:470nF,20%,50V,GP,TP,5x11,5	4	C807	2201-000599 C-CERAMIC,DISC:0.56nF,10%,500V,Y5P,TP,5.	
....4	C206	2305-001011 C-FILM,MPEF:22nF,5%,100V,TP,3.5x12.5x7.5	4	C808	2301-000016 C-FILM,PEF;22nF,5%,100V,TP,7.2x4.5x9.0mm	
			4	C810	2305-000412 C-FILM,MPEF:470nF,5%,63V,TP,-,5mm	
			4	C812	2401-002463 C-AL:470uF,20%,16V,GP,TP,8x11.5,5	
			4	C816	2401-000480 C-AL:10uF,20%,50V,GP,TP,5x11,5	
			4	C817	2401-001840 C-AL:100uF,20%,16V,GP,TP,6.3x11,5	

Loc. No.	Code No.	Description ; Specification	Remark
....4	C820	2401-000703 C-AL:2200uF,20%,25V,GP,-,12.5x25mm,	
....4	C821	2401-001486 C-AL:47uF,20%,160V,HR,TP,13x20mm,5m	
....4	C822	2301-000192 C-FILM,PEF:1nF,5%,50V,TP5.3x10mm,5mm	
....4	C823	2201-000370 C-CERAMIC,DISC:0.22nF,10%,50V,Y5P,TP,4x3	
....4	C851	2401-001192 C-AL:33uF,20%,50V,GP,TP,6.3x11,5	
....4	C852	2301-000235 C-FILM,PEF:3.9nF,5%,50V,TP,6.5x3.0x5.5mm	
....4	C901	2401-002144 C-AL:47uF,20%,16V,GP,TP,5x11,5	
....4	C902	2202-000796 C-CERAMIC,MLC-AXIAL:1nF,10%,50V,Y5P,TP,3	
....4	C903	2401-000480 C-AL:10uF,20%,50V,GP,TP,5x11,5	
....4	C904	2202-000796 C-CERAMIC,MLC-AXIAL:1nF,10%,50V,Y5P,TP,3	
....4	C905	2401-001333 C-AL:470nF,20%,50V,GP,TP,5x11,5	
....4	C906	2201-000471 C-CERAMIC,DISC:0.33nF,10%,50V,Y5P,TP,4x3	
....4	C907	2305-000665 C-FILM,MPEF:100nF,5%,63V,TP,7.5x4.0x5.0m	
....4	C908	2201-000193 C-CERAMIC,DISC:0.01nF,0.25pF,50V,NP0,TP,	
....4	C909	2201-000573 C-CERAMIC,DISC:0.047nF,5%,50V,NP0,TP,5x3	
....4	C910	2301-000445 C-FILM,PEF:4.7nF,5%,50V,TP,5.5x7x3mm,5mm	
....4	C911	2401-000480 C-AL:10uF,20%,50V,GP,TP,5x11,5	
....4	C912	2305-000470 C-FILM,MPEF:68nF,5%,100V,TP,-,5mm	
....4	C915	2202-000127 C-CERAMIC,MLC-AXIAL:10nF,+80-20%,25V,Y5V	
....4	CN603	3711-002642 CONNECTOR-HEADER-BOX,3P,1R,2.5MM,STRAIGH	
....4	CN701	3711-002646 CONNECTOR-HEADER-BOX,7P,1R,2.5mm,STRAIGH	
△....4	CR402S	2201-000467 C-CERAMIC,DISC:0.33nF,10%,2kV,Y5P,TP,6.3	
△....4	CR403S	2306-000193 C-FILM,MPPF:360nF,5%,200V,TP,21x18.5x13,	
....4	CS603	2202-000796 C-CERAMIC,MLC-AXIAL:1nF,10%,50V,Y5P,TP,3	
....4	CU02	2305-000665 C-FILM,MPEF:100nF,5%,63V,TP,7.5x4.0x5.0m	
....4	D101	0403-000700 DIODE-ZENER:TPZ33A,33V,31-35V,1W,DO-41,T	
....4	D102	0403-000508 DIODE-ZENER:MTZJ5.6B,5.6V,5.45-5.73V,500	
....4	D103	0402-000132 DIODE-RECTIFIER:1N4004,400V,1A,DO-41,TP	
....4	D201	0403-001316 DIODE-ZENER:MTZJ3.0A,2.85-3.07V,500mW,DO	
....4	D202	0401-000005 DIODE-SWITCHING:1N4148,100V,200mA,DO-35,	
....4	D203	0401-000005 DIODE-SWITCHING:1N4148,100V,200mA,DO-35,	
....4	D204	0401-000005 DIODE-SWITCHING:1N4148,100V,200mA,DO-35,	
....4	D205	0403-001319 DIODE-ZENER:MTZJ4.7C,4.68-4.93V,500mW,DO	
....4	D206	0401-000005 DIODE-SWITCHING:1N4148,100V,200mA,DO-35,	
....4	D207	0401-000005 DIODE-SWITCHING:1N4148,100V,200mA,DO-35,	
....4	D208	0402-000132 DIODE-RECTIFIER:1N4004,400V,1A,DO-41,TP	
....4	D210	0403-000720 DIODE-ZENER:MTZJ9.1B,9.1V,8.57-9.01V,500	
....4	D299	0403-001211 DIODE-ZENER:MTZJ12B,11.44-12.03V,500mW,D	
....4	D301	0402-001105 DIODE-RECTIFIER:ERB43-04SV1,400V,1.0A,-,	
....4	D302	0403-001211 DIODE-ZENER:MTZJ12B,11.44-12.03V,500mW,D	
....4	D401	0402-000132 DIODE-RECTIFIER:1N4004,400V,1A,DO-41,TP	
....4	D402	0402-000132 DIODE-RECTIFIER:1N4004,400V,1A,DO-41,TP	
....4	D403	0402-001105 DIODE-RECTIFIER:ERB43-04SV1,400V,1.0A,-,	
....4	D404	0402-001105 DIODE-RECTIFIER:ERB43-04SV1,400V,1.0A,-,	
....4	D405	0402-001105 DIODE-RECTIFIER:ERB43-04SV1,400V,1.0A,-,	
....4	D407	0402-001105 DIODE-RECTIFIER:ERB43-04SV1,400V,1.0A,-,	
....4	D601	0401-000005 DIODE-SWITCHING:1N4148,100V,200mA,DO-35,	
....4	D701	0403-001211 DIODE-ZENER:MTZJ12B,11.44-12.03V,500mW,D	
....4	D704	0403-001211 DIODE-ZENER:MTZJ12B,11.44-12.03V,500mW,D	
△....4	D801S	0402-001111 DIODE-RECTIFIER:1N5397GP,600V,1.5A,DO-20	
....4	D802	0402-000540 DIODE-RECTIFIER:RU20A,600V,1.5A,-,TP	
△....4	D802S	0402-001111 DIODE-RECTIFIER:1N5397GP,600V,1.5A,DO-20	
....4	D803	0402-001105 DIODE-RECTIFIER:ERB43-04SV1,400V,1.0A,-,	
△....4	D803S	0402-001111 DIODE-RECTIFIER:1N5397GP,600V,1.5A,DO-20	
....4	D804	0403-001211 DIODE-ZENER:MTZJ12B,11.44-12.03V,500mW,D	
△....4	D804S	0402-001111 DIODE-RECTIFIER:1N5397GP,600V,1.5A,DO-20	
....4	D805	0402-001111 DIODE-RECTIFIER:1N5397GP,600V,1.5A,DO-20	
....4	D806	0401-000005 DIODE-SWITCHING:1N4148,100V,200mA,DO-35,	
....4	D814	0402-000534 DIODE-RECTIFIER:RG10V,400V,1.2A,DO-201,T	
....4	D855	0403-000508 DIODE-ZENER:MTZJ5.6B,5.6V,5.45-5.73V,500	
....4	D856	0403-000508 DIODE-ZENER:MTZJ5.6B,5.6V,5.45-5.73V,500	
....4	D901	0401-000005 DIODE-SWITCHING:1N4148,100V,200mA,DO-35,	
....4	D902	0403-000508 DIODE-ZENER:MTZJ5.6B,5.6V,5.45-5.73V,500	
....4	D903	0401-000005 DIODE-SWITCHING:1N4148,100V,200mA,DO-35,	
....4	D904	0401-000005 DIODE-SWITCHING:1N4148,100V,200mA,DO-35,	
....4	D905	0403-000508 DIODE-ZENER:MTZJ5.6B,5.6V,5.45-5.73V,500	
....4	D906	0403-000508 DIODE-ZENER:MTZJ5.6B,5.6V,5.45-5.73V,500	
....4	D907	0401-000005 DIODE-SWITCHING:1N4148,100V,200mA,DO-35,	
....4	DZ201	0403-001211 DIODE-ZENER:MTZJ12B,11.44-12.03V,500mW,D	
....4	DZ202	0403-001211 DIODE-ZENER:MTZJ12B,11.44-12.03V,500mW,D	
....4	DZ203	0403-001211 DIODE-ZENER:MTZJ12B,11.44-12.03V,500mW,D	
....4	DZ204	0403-001211 DIODE-ZENER:MTZJ12B,11.44-12.03V,500mW,D	
....4	DZ205	0403-001211 DIODE-ZENER:MTZJ12B,11.44-12.03V,500mW,D	
....4	DZ206	0403-001211 DIODE-ZENER:MTZJ12B,11.44-12.03V,500mW,D	
....4	DZ207	0403-001211 DIODE-ZENER:MTZJ12B,11.44-12.03V,500mW,D	
....4	DZ208	0403-001211 DIODE-ZENER:MTZJ12B,11.44-12.03V,500mW,D	
....4	DZ209	0403-001211 DIODE-ZENER:MTZJ12B,11.44-12.03V,500mW,D	

Loc. No.	Code No.	Description ; Specification	Remark
....4	DZ601	0403-000719 DIODE-ZENER:MTZJ7.5B,7.5V,7.07-7.45V,500	
....4	DZ602	0403-001327 DIODE-ZENER:MTZJ18A,16.22-17.06V,500mW,D	
....4	DZ603	0403-001327 DIODE-ZENER:MTZJ18A,16.22-17.06V,500mW,D	
....4	DZ802	0403-001327 DIODE-ZENER:MTZJ18A,16.22-17.06V,500mW,D	
....4	DZ806	0403-001318 DIODE-ZENER:MTZJ4.3B,4.17-4.43V,500mW,DO	
....4	DZ808	0403-000699 DIODE-ZENER:TPZ27B,27V,27-30.8V,1W,DO-41	
....4	DZ901	0403-000508 DIODE-ZENER:MTZJ5.6B,5.6V,5.45-5.73V,500	
....4	DZ902	0403-000508 DIODE-ZENER:MTZJ5.6B,5.6V,5.45-5.73V,500	
....4	DZ903	0403-001319 DIODE-ZENER:MTZJ4.7C,4.68-4.93V,500mW,DO	
....4	DZ904	0403-000508 DIODE-ZENER:MTZJ5.6B,5.6V,5.45-5.73V,500	
....4	F801A	3602-000114 FUSE-HOLDER:-,30mohm	
....4	F801B	3602-000114 FUSE-HOLDER:-,30mohm	
△....4	FA801S	3601-001086 FUSE-AXIAL LEAD:125V,5A,FAST-ACTING,GLAS	
....4	L102	2701-000178 INDUCTOR-AXIAL:33uH,10%,3x7mm	
....4	L152	2701-000202 INDUCTOR-AXIAL:560nH,10%,2.5x3.4mm	
....4	L201	AA26-10004K TRANS-IF:-,7MG,SIF,11.5uH,7mm,100pF,4.8	
....4	L202	2701-000207 INDUCTOR-AXIAL:56uH,5%,2.5x3.4mm	
....4	L203	2701-000158 INDUCTOR-AXIAL:22uH,10%,2.5x3.4mm	
....4	L204	2701-000207 INDUCTOR-AXIAL:56uH,5%,2.5x3.4mm	
....4	L205	AA26-10004C TRANS-IF:-,7MG,VIF,0.37uH,7mm,27pF,52.3	
....4	L206	2701-000111 INDUCTOR-AXIAL:100uH,10%,2.5x3.4mm	
....4	L208	2701-000114 INDUCTOR-AXIAL:10uH,10%,2.5x3.4mm	
....4	L301	2701-000116 INDUCTOR-AXIAL:10uH,10%,4.2x9.8mm	
....4	L402	2701-001032 INDUCTOR-AXIAL:100uH,10%,5x14mm	
....4	L501	2701-000184 INDUCTOR-AXIAL:4.7uH,10%,2.5x3.4mm	
....4	L502	2701-000184 INDUCTOR-AXIAL:4.7uH,10%,2.5x3.4mm	
....4	L503	2701-000184 INDUCTOR-AXIAL:4.7uH,10%,2.5x3.4mm	
....4	L602	2701-000158 INDUCTOR-AXIAL:22uH,10%,2.5x3.4mm	
....4	L802	3301-001223 CORE-FERRITE BEAD:AA,62ohm,3.5x0.8x5mm,-	
....4	L803	2901-000297 FILTER-EMI ON BOARD:-,3A,-,-,3.5x5,TP,-	
....4	L804	3301-001223 CORE-FERRITE BEAD:AA,62ohm,3.5x0.8x5mm,-	
....4	L805	2901-000297 FILTER-EMI ON BOARD:-,3A,-,-,3.5x5,TP,-	
....4	L810	2701-001032 INDUCTOR-AXIAL:100uH,10%,5x14mm	
....4	L811	2901-000297 FILTER-EMI ON BOARD:-,3A,-,-,3.5x5,TP,-	
....4	L901	2701-000114 INDUCTOR-AXIAL:10uH,10%,2.5x3.4mm	
....4	L902	2701-000114 INDUCTOR-AXIAL:10uH,10%,2.5x3.4mm	
....4	L999	2701-000115 INDUCTOR-AXIAL:10uH,10%,3x7mm	
....4	Q151	0501-000436 TR-SMALL SIGNAL:KTC3197,NPN,625mW,TO-92,	
....4	Q201	0501-002183 TR-SMALL SIGNAL:KTC9014,NPN,625mW,TO-92,	
....4	Q202	0501-002183 TR-SMALL SIGNAL:KTC9014,NPN,625mW,TO-92,	
....4	Q203	0501-002183 TR-SMALL SIGNAL:KTC9014,NPN,625mW,TO-92,	
....4	Q402	0501-000369 TR-SMALL SIGNAL:KSC2331-Y,NPN,1000mW,TO-	
....4	Q501	0501-002014 TR-SMALL SIGNAL:KSC2330-R,NPN,1W,TO-92L,	
....4	Q502	0501-002014 TR-SMALL SIGNAL:KSC2330-R,NPN,1W,TO-92L,	
....4	Q503	0501-002014 TR-SMALL SIGNAL:KSC2330-R,NPN,1W,TO-92L,	
....4	Q601	0501-002183 TR-SMALL SIGNAL:KTC9014,NPN,625mW,TO-92,	
....4	Q801	1203-001217 IC-POS.ADJUST REG.:431,TO-92,3P,4.58MIL	
....4	Q903	0501-002183 TR-SMALL SIGNAL:KTC9014,NPN,625mW,TO-92,	
....4	QU01	0504-000123 TR-DIGITAL:KSR1010,NPN,300mW,10K,TO-92,T	
....4	R101	2001-001155 R-CARBON(S):5.6KOHM,5%,1/2W,AA,TP,2.4X6.4	
....4	R102	2001-001000 R-CARBON:82KOHM,5%,1/8W,AA,TP,1.8X3.2MM	
....4	R104	2003-000592 R-METAL OXIDE(S):22ohm,5%,2W,AF,TP,4x12m	
....4	R105	2003-000592 R-METAL OXIDE(S):22ohm,5%,2W,AF,TP,4x12m	
....4	R106	2003-000664 R-METAL OXIDE(S):33ohm,5%,2W,AF,TP,4x12m	
....4	R107	2003-000664 R-METAL OXIDE(S):33ohm,5%,2W,AF,TP,4x12m	
....4	R152	2001-000221 R-CARBON:1.2KOHM,5%,1/8W,AA,TP,1.8X3.2M	
....4	R153	2001-000734 R-CARBON:4.7KOHM,5%,1/8W,AA,TP,1.8X3.2M	
....4	R154	2001-000780 R-CARBON:470OHM,5%,1/8W,AA,TP,1.8X3.2MM	
....4	R155	2001-000281 R-CARBON:100OHM,5%,1/8W,AA,TP,1.8X3.2MM	
....4	R156	2001-000793 R-CARBON:470OHM,5%,1/8W,AA,TP,1.8X3.2MM	
....4	R157	2001-000666 R-CARBON:330OHM,5%,1/8W,AA,TP,1.8X3.2MM	
....4	R158	2001-000007 R-CARBON:3KOHM,5%,1/8W,AA,TP,1.8X3.2MM	
....4	R159	2001-000007 R-CARBON:3KOHM,5%,1/8W,AA,TP,1.8X3.2MM	
....4	R201	2001-000429 R-CARBON:1KOHM,5%,1/8W,AA,TP,1.8X3.2MM	
....4	R202	2001-000734 R-CARBON:4.7KOHM,5%,1/8W,AA,TP,1.8X3.2M	
....4	R203	2001-000734 R-CARBON:4.7KOHM,5%,1/8W,AA,TP,1.8X3.2M	
....4	R204	2001-000221 R-CARBON:1.2KOHM,5%,1/8W,AA,TP,1.8X3.2M	
....4	R205	2001-000221 R-CARBON:1.2KOHM,5%,1/8W,AA,TP,1.8X3.2M	
....4	R206	2001-000221 R-CARBON:1.2KOHM,5%,1/8W,AA,TP,1.8X3.2M	
....4	R207	2001-001111 R-CARBON(S):240OHM,5%,1/2W,AA,TP,2.4X6.4	
....4	R208	2001-000515 R-CARBON:220OHM,5%,1/8W,AA,TP,1.8X3.2MM	
....4	R209	2001-000515 R-CARBON:220OHM,5%,1/8W,AA,TP,1.8X3.2MM	
....4	R210	2001-000515 R-CARBON:220OHM,5%,1/8W,AA,TP,1.8X3.2MM	
....4	R211	2001-000281 R-CARBON:100OHM,5%,1/8W,AA,TP,1.8X3.2MM	
....4	R212	2001-000281 R-CARBON:100OHM,5%,1/8W,AA,TP,1.8X3.2MM	
....4	R213	2001-000837 R-CARBON:51KOHM,5%,1/8W,AA,TP,1.8X3.2MM	
....4	R214	2001-000331 R-CARBON:12KOHM,5%,1/8W,AA,TP,1.8X3.2MM	

Electric Parts List

Loc. No.	Code No.	Description ; Specification	Remark
....4	R215	2001-000331 R-CARBON:12KOHM,5%,1/8W,AA,TP,1.8X3.2MM	
....4	R218	2001-000591 R-CARBON:3.3KOHM,5%,1/8W,AA,TP,1.8X3.2M	
....4	R219	2001-000674 R-CARBON:360OHM,5%,1/8W,AA,TP,1.8X3.2MM	
....4	R222	2001-000773 R-CARBON:470KOHM,5%,1/8W,AA,TP,1.8X3.2M	
....4	R223	2001-000780 R-CARBON:470OHM,5%,1/8W,AA,TP,1.8X3.2MM	
....4	R226	2001-000508 R-CARBON:220KOHM,5%,1/8W,AA,TP,1.8X3.2M	
....4	R227	2001-000508 R-CARBON:220KOHM,5%,1/8W,AA,TP,1.8X3.2M	
....4	R228	2001-000258 R-CARBON:1.8KOHM,5%,1/8W,AA,TP,1.8X3.2M	
....4	R229	2001-000258 R-CARBON:1.8KOHM,5%,1/8W,AA,TP,1.8X3.2M	
....4	R230	2001-000591 R-CARBON:3.3KOHM,5%,1/8W,AA,TP,1.8X3.2M	
....4	R231	2001-000660 R-CARBON:33KOHM,5%,1/8W,AA,TP,1.8X3.2MM	
....4	R233	2001-000011 R-CARBON:75KOHM,5%,1/8W,AA,TP,1.8X3.2MM	
....4	R234	2001-000405 R-CARBON:180OHM,5%,1/8W,AA,TP,1.8X3.2MM	
....4	R235	2004-000195 R-METAL:100Kohm,1%,1/8W,AA,TP,1.8x3.2m	
....4	R236	2001-000548 R-CARBON:270KOHM,5%,1/8W,AA,TP,1.8X3.2M	
....4	R237	2001-000290 R-CARBON:10KOHM,5%,1/8W,AA,TP,1.8X3.2MM	
....4	R239	2001-000947 R-CARBON:7.5KOHM,5%,1/8W,AA,TP,1.8X3.2M	
....4	R240	2001-000577 R-CARBON:2KOHM,5%,1/8W,AA,TP,1.8X3.2MM	
....4	R241	2001-000429 R-CARBON:1KOHM,5%,1/8W,AA,TP,1.8X3.2MM	
....4	R242	2001-000221 R-CARBON:1.2KOHM,5%,1/8W,AA,TP,1.8X3.2M	
....4	R251	2001-000591 R-CARBON:3.3KOHM,5%,1/8W,AA,TP,1.8X3.2M	
....4	R252	2001-000591 R-CARBON:3.3KOHM,5%,1/8W,AA,TP,1.8X3.2M	
....4	R253	2001-000591 R-CARBON:3.3KOHM,5%,1/8W,AA,TP,1.8X3.2M	
....4	R257	2008-000252 R-FUSIBLE(S):0.47ohm,10%,1/2W,AF,TP,2.5x	
....4	R301	2001-000429 R-CARBON:1KOHM,5%,1/8W,AA,TP,1.8X3.2MM	
....4	R302	2001-000003 R-CARBON:330ohm,5%,1/8W,AA,TP,1.8x3.2mm	
....4	R303	2001-000908 R-CARBON:62KOHM,5%,1/8W,AA,TP,1.8X3.2MM	
....4	R304	2003-000436 R-METAL OXIDE(S):1.5ohm,5%,1W,AF,TP,3.3x	
....4	R305	2001-000947 R-CARBON:7.5KOHM,5%,1/8W,AA,TP,1.8X3.2M	
....4	R306	2001-000766 R-CARBON:43KOHM,5%,1/8W,AA,TP,1.8X3.2MM	
....4	R307	2001-000864 R-CARBON:56KOHM,5%,1/8W,AA,TP,1.8X3.2MM	
....4	R308	2001-000908 R-CARBON:62KOHM,5%,1/8W,AA,TP,1.8X3.2MM	
....4	R309	2003-001043 R-METAL OXIDE(S):510ohm,5%,1W,AF,TP,2.5x	
....4	R401	2001-000780 R-CARBON:470OHM,5%,1/8W,AA,TP,1.8X3.2MM	
....4	R402	2001-000515 R-CARBON:220OHM,5%,1/8W,AA,TP,1.8X3.2MM	
....4	R403	2001-001114 R-CARBON(S):270OHM,5%,1/2W,AA,TP,2.4X6.4	
....4	R404	2001-001136 R-CARBON(S):360OHM,5%,1/2W,AA,TP,2.4X6.4M	
....4	R405	2003-000540 R-METAL OXIDE(S):1Kohm,5%,2W,AF,TP,4x12m	
....4	R406	2008-001107 R-FUSIBLE(S):300ohm,5%,2W,AG,TP,3.9x12mm	
....4	R407	2003-002102 R-METAL OXIDE:68Kohm,5%,2W,AF,TP,4x12mm	
....4	R409	2008-000253 R-FUSIBLE(S):0.47ohm,5%,1W,AF,TP,3.9x10m	
....4	R410	2008-000206 R-FUSIBLE(S):1ohm,5%,1/2W,AF,TP,2.5x6.5m	
....4	R411	2004-001373 R-METAL(S):100Kohm,1%,1/2W,AA,TP,2.4x6.4	
....4	R412	2004-001373 R-METAL(S):100Kohm,1%,1/2W,AA,TP,2.4x6.4	
....4	R415	2003-000784 R-METAL OXIDE(S):7.5Kohm,5%,2W,AF,TP,4x1	
....4	R416	2001-000022 R-CARBON(S):330OHM,5%,1/2W,AA,TP,2.4X6.4M	
....4	R417	2001-001410 R-CARBON(S):430OHM,5%,1/2W,AA,TP,2.4X6.4M	
....4	R444	2001-001099 R-CARBON(S):2.7KOHM,5%,1/2W,AA,TP,2.4X6.	
....4	R501	2001-000007 R-CARBON:3KOHM,5%,1/8W,AA,TP,1.8X3.2MM	
....4	R502	2001-000007 R-CARBON:3KOHM,5%,1/8W,AA,TP,1.8X3.2MM	
....4	R503	2001-000007 R-CARBON:3KOHM,5%,1/8W,AA,TP,1.8X3.2MM	
....4	R504	2003-002170 R-METAL OXIDE(S):15Kohm,5%,2W,AG,TP,3.9x	
....4	R505	2003-002170 R-METAL OXIDE(S):15Kohm,5%,2W,AG,TP,3.9x	
....4	R506	2003-002170 R-METAL OXIDE(S):15Kohm,5%,2W,AG,TP,3.9x	
....4	R507	2001-000281 R-CARBON:100OHM,5%,1/8W,AA,TP,1.8X3.2MM	
....4	R508	2001-000281 R-CARBON:100OHM,5%,1/8W,AA,TP,1.8X3.2MM	
....4	R509	2001-000281 R-CARBON:100OHM,5%,1/8W,AA,TP,1.8X3.2MM	
....4	R510	2001-000628 R-CARBON:300OHM,5%,1/8W,AA,TP,1.8X3.2MM	
....4	R511	2001-000628 R-CARBON:300OHM,5%,1/8W,AA,TP,1.8X3.2MM	
....4	R512	2001-000628 R-CARBON:300OHM,5%,1/8W,AA,TP,1.8X3.2MM	
....4	R513	2001-000666 R-CARBON:330OHM,5%,1/8W,AA,TP,1.8X3.2MM	
....4	R514	2001-000666 R-CARBON:330OHM,5%,1/8W,AA,TP,1.8X3.2MM	
....4	R515	2002-001006 R-COMPOSITION:4.7Kohm,5%,1/2W,AA,TP,3.7x	
....4	R517	2001-000666 R-CARBON:330OHM,5%,1/8W,AA,TP,1.8X3.2MM	
....4	R518	2008-001015 R-FUSIBLE(S):1.5ohm,5%,2W,AF,TP,3.9x10mm	
....4	R599	2008-001053 R-FUSIBLE:22ohm,5%,1/2W,AF,TP,2.5x6.5mm	
....4	R601	2001-000429 R-CARBON:1KOHM,5%,1/8W,AA,TP,1.8X3.2MM	
....4	R602	2001-000290 R-CARBON:10KOHM,5%,1/8W,AA,TP,1.8X3.2MM	
....4	R603	2004-000195 R-METAL:100Kohm,1%,1/8W,AA,TP,1.8x3.2m	
....4	R604	2001-000947 R-CARBON:7.5KOHM,5%,1/8W,AA,TP,1.8X3.2M	
....4	R606	2001-000613 R-CARBON:3.9KOHM,5%,1/8W,AA,TP,1.8X3.2M	
....4	R610	2001-000793 R-CARBON:470OHM,5%,1/8W,AA,TP,1.8X3.2MM	
....4	R611	2001-000429 R-CARBON:1KOHM,5%,1/8W,AA,TP,1.8X3.2MM	
....4	R701	2001-001187 R-CARBON(S):75OHM,5%,1/2W,AA,TP,2.4X6.4M	
....4	R702	2004-001373 R-METAL(S):100Kohm,1%,1/2W,AA,TP,2.4x6.4	
....4	R703	2001-000734 R-CARBON:4.7KOHM,5%,1/8W,AA,TP,1.8X3.2M	
....4	R801	2001-001150 R-CARBON(S):470KOHM,5%,1/2W,AA,TP,2.4X6.	

Loc. No.	Code No.	Description ; Specification	Remark
....4	R802	2003-000994 R-METAL OXIDE(S):33Kohm,5%,2W,AF,TP,3.9x	
....4	R803	2003-000994 R-METAL OXIDE(S):33Kohm,5%,2W,AF,TP,3.9x	
....4	R807	2003-000994 R-METAL OXIDE(S):33Kohm,5%,2W,AF,TP,3.9x	
....4	R808	2001-001150 R-CARBON(S):470KOHM,5%,1/2W,AA,TP,2.4X6.	
....4	R809	2008-000205 R-FUSIBLE(S):10ohm,5%,1/2W,AF,TP,2.5x6.5	
....4	R811	2001-001170 R-CARBON(S):6.8OHM,5%,1/2W,AA,TP,2.4X6.4	
....4	R812	2008-000252 R-FUSIBLE(S):0.47ohm,10%,1/2W,AF,TP,2.5x	
....4	R814	2001-000864 R-CARBON:56KOHM,5%,1/8W,AA,TP,1.8X3.2MM	
....4	R816	2001-001192 R-CARBON(S):820OHM,5%,1/2W,AA,TP,2.4X6.4	
....4	R817	2001-001170 R-CARBON(S):6.8OHM,5%,1/2W,AA,TP,2.4X6.4	
....4	R819	2008-001033 R-FUSIBLE(S):10ohm,5%,2W,AF,TP,3.9x10mm	
....4	R819A	2008-001033 R-FUSIBLE(S):10ohm,5%,2W,AF,TP,3.9x10mm	
....4	R820	2001-000019 R-CARBON(S):10OHM,5%,1/2W,AA,TP,2.4X6.4M	
....4	R821	2004-004089 R-METAL(S):123Kohm,1%,1/2W,AA,TP,2.5x6.5	
....4	R823	2001-000109 R-CARBON(S):470OHM,5%,1/2W,AA,TP,2.4X6.4	
....4	R824	2004-001983 R-METAL(S):2.49Kohm,1%,1/2W,AA,TP,2.4x6.	
....4	R825	2001-001108 R-CARBON(S):22KOHM,5%,1/2W,AA,TP,2.4X6.4	
....4	R852	2004-001371 R-METAL(S):1.5Kohm,1%,1/2W,AA,TP,2.4x6.4	
....4	R853	2004-001390 R-METAL(S):1Kohm,2%,1/2W,AA,TP,2.4x6.4mm	
....4	R854	2001-001125 R-CARBON(S):300KOHM,5%,1/2W,AA,TP,2.4X6.	
....4	R901	2001-000793 R-CARBON:470OHM,5%,1/8W,AA,TP,1.8X3.2MM	
....4	R902	2001-000429 R-CARBON:1KOHM,5%,1/8W,AA,TP,1.8X3.2MM	
....4	R903	2001-000281 R-CARBON:100OHM,5%,1/8W,AA,TP,1.8X3.2MM	
....4	R904	2001-000281 R-CARBON:100OHM,5%,1/8W,AA,TP,1.8X3.2MM	
....4	R905	2001-000429 R-CARBON:1KOHM,5%,1/8W,AA,TP,1.8X3.2MM	
....4	R906	2001-000472 R-CARBON:2.7KOHM,5%,1/8W,AA,TP,1.8X3.2M	
....4	R907	2001-000995 R-CARBON:820OHM,5%,1/8W,AA,TP,1.8X3.2MM	
....4	R908	2001-000232 R-CARBON:1.3KOHM,5%,1/8W,AA,TP,1.8X3.2M	
....4	R910	2001-000995 R-CARBON:820OHM,5%,1/8W,AA,TP,1.8X3.2MM	
....4	R911	2001-000290 R-CARBON:10KOHM,5%,1/8W,AA,TP,1.8X3.2MM	
....4	R913	2001-000924 R-CARBON:680OHM,5%,1/8W,AA,TP,1.8X3.2MM	
....4	R914	2001-000577 R-CARBON:2KOHM,5%,1/8W,AA,TP,1.8X3.2MM	
....4	R915	2001-000734 R-CARBON:4.7KOHM,5%,1/8W,AA,TP,1.8X3.2M	
....4	R916	2001-000947 R-CARBON:7.5KOHM,5%,1/8W,AA,TP,1.8X3.2M	
....4	R917	2001-000947 R-CARBON:7.5KOHM,5%,1/8W,AA,TP,1.8X3.2M	
....4	R918	2001-000947 R-CARBON:7.5KOHM,5%,1/8W,AA,TP,1.8X3.2M	
....4	R919	2001-000977 R-CARBON:8.2KOHM,5%,1/8W,AA,TP,1.8X3.2M	
....4	R920	2001-001108 R-CARBON(S):22KOHM,5%,1/2W,AA,TP,2.4X6.4	
....4	R921	2001-000290 R-CARBON:10KOHM,5%,1/8W,AA,TP,1.8X3.2MM	
....4	R922	2001-000281 R-CARBON:100OHM,5%,1/8W,AA,TP,1.8X3.2MM	
....4	R923	2001-000281 R-CARBON:100OHM,5%,1/8W,AA,TP,1.8X3.2MM	
....4	R924	2001-000449 R-CARBON:2.2KOHM,5%,1/8W,AA,TP,1.8X3.2M	
....4	R925	2001-000449 R-CARBON:2.2KOHM,5%,1/8W,AA,TP,1.8X3.2M	
....4	R926	2001-000008 R-CARBON:15KOHM,5%,1/8W,AA,TP,1.8X3.2MM	
....4	R927	2001-000290 R-CARBON:10KOHM,5%,1/8W,AA,TP,1.8X3.2MM	
....4	R929	2001-000221 R-CARBON:1.2KOHM,5%,1/8W,AA,TP,1.8X3.2M	
....4	R930	2001-000290 R-CARBON:10KOHM,5%,1/8W,AA,TP,1.8X3.2MM	
....4	R931	2001-000429 R-CARBON:1KOHM,5%,1/8W,AA,TP,1.8X3.2MM	
....4	R932	2001-000290 R-CARBON:10KOHM,5%,1/8W,AA,TP,1.8X3.2MM	
....4	R933	2001-000290 R-CARBON:10KOHM,5%,1/8W,AA,TP,1.8X3.2MM	
....4	R936	2004-000195 R-METAL:100Kohm,1%,1/8W,AA,TP,1.8x3.2m	
....4	R937	2001-000290 R-CARBON:10KOHM,5%,1/8W,AA,TP,1.8X3.2MM	
....4	R938	2001-000429 R-CARBON:1KOHM,5%,1/8W,AA,TP,1.8X3.2MM	
....4	R940	2001-000708 R-CARBON:39OHM,5%,1/8W,AA,TP,1.8X3.2MM	
....4	R951	2001-000734 R-CARBON:4.7KOHM,5%,1/8W,AA,TP,1.8X3.2M	
....4	R952	2001-000472 R-CARBON:2.7KOHM,5%,1/8W,AA,TP,1.8X3.2M	
....4	R988	2001-000734 R-CARBON:4.7KOHM,5%,1/8W,AA,TP,1.8X3.2M	
....4	RH01	2002-001006 R-COMPOSITION:4.7Kohm,5%,1/2W,AA,TP,3.7x	
....4	RH02	2002-001006 R-COMPOSITION:4.7Kohm,5%,1/2W,AA,TP,3.7x	
△....4	RR401S	2004-001390 R-METAL(S):1Kohm,2%,1/2W,AA,TP,2.4x6.4mm	
....4	RS605	2001-000449 R-CARBON:2.2KOHM,5%,1/8W,AA,TP,1.8X3.2M	
....4	RS606	2001-000429 R-CARBON:1KOHM,5%,1/8W,AA,TP,1.8X3.2MM	
....4	RU02	2001-000780 R-CARBON:470OHM,5%,1/8W,AA,TP,1.8X3.2MM	
....4	RU03	2001-000780 R-CARBON:470OHM,5%,1/8W,AA,TP,1.8X3.2MM	
....4	RU06	2001-000397 R-CARBON:180KOHM,5%,1/8W,AA,TP,1.8X3.2M	
....4	RU07	2001-001062 R-CARBON(S):10MOHM,5%,1/2W,AA,TP,2.4X6.4	
....4	RU10	2001-000780 R-CARBON:470OHM,5%,1/8W,AA,TP,1.8X3.2MM	
△....4	RY801S	2002-001013 R-COMPOSITION:15V,20mA,90-170gf,7.5x7mm,SP	
....4	SW901	3404-000244 SWITCH-TACT:15V,20mA,90-170gf,7.5x7mm,SP	
....4	SW902	3404-000244 SWITCH-TACT:15V,20mA,90-170gf,7.5x7mm,SP	
....4	SW903	3404-000244 SWITCH-TACT:15V,20mA,90-170gf,7.5x7mm,SP	
....4	SW904	3404-000244 SWITCH-TACT:15V,20mA,90-170gf,7.5x7mm,SP	
....4	SW905	3404-000244 SWITCH-TACT:15V,20mA,90-170gf,7.5x7mm,SP	
△....4	VX801S	1405-000152 VARISTOR:560V,2500A,14x8.5mm,TP	
....4	X201	2801-003725 CRYSTAL-UNIT:3.579545MHz,20ppm,28-AAM,16	
....4	Z201	2903-001022 FILTER-CERAMIC:BR,4.5MHz,-,-,TP,-	
....4	Z601	2903-000135 FILTER-CERAMIC:BP,4.5MHz,120KHz,6dB,-,TP	

Loc. No.	Code No.	Description ; Specification	Remark
----------	----------	-----------------------------	--------

ASSY-PCB,A/V FRONT

1	*	AA95-90039G ASSY-PCB,A/V FRONT;- ,TXH1373X/XAC,K15A,N	
..2	01LOT	AA41-10350B PCB-A/V;K1,1,FR-1,51x23x1.6T,-,-	S.N.A
..2	CE01	2401-000480 C-AL;10uF,20%,50V,GP,TP,5x11,5	
..2	CN704*	AA39-20070E LEAD CONNECTOR-ASSY;- ,7P,YBNH025-07,67096	
..2	JA703	3722-000506 JACK-RCA;2P,3.6MM,-,AG	
..2	JE601	3722-000143 JACK-PHONE;1P(VER),3.4mm,AG,BLK,NO	
..2	RE01	2001-000117 R-CARBON(S);680HM,5%,1/2W,AA,TP,2.4X6.4M	
..2	RE02	2001-000117 R-CARBON(S);680HM,5%,1/2W,AA,TP,2.4X6.4M	
..2		0202-000187 SOLDER-WIRE FLUX;- ,RS60S,D1.2,63Sn/37Pb	S.N.A

ASSY CABINET FRONT

1	*	AA91-10382N ASSY CABINET FRONT;- ,5038,(SPK)SV704P EPN	
..2	KNOB	6003-001026 SCREW-TAPTITE;RH,+ ,B,M4,L15,ZPC(BLK),SWR	
..2	KNOPW	AA61-60003J SPRING-CS;- ,SUS304,0.5,OD6,H12,N7,-,-,-	
..2	SPK+CF	6003-001026 SCREW-TAPTITE;RH,+ ,B,M4,L15,ZPC(BLK),SWR	
..2		AA64-40085A WINDOW-REMOCON;- ,5038,-,PC,V0,VIOLET,-	
..2		AA64-40188A INDICATOR-LED;- ,5038,-,ACRYL,-,-,-	
..2		AA64-70127F BADGE-BRAND;AL,SAMSUNG,SILVER,L40,R800,N	
..2		AA65-30105A CLAMP-WIRE;NYLON 66,V2,NTR,15MM,ALL MODE	S.N.A
..2		AA96-10141B ASSY-SPEAKER;- ,80HM,3W,3001-001020,AA39-	
...3		3001-001020 SPEAKER;3W,8ohm,90dB,140Hz	
...3		AA39-20501C LEAD CONNECTOR-ASSY;- ,3(2)P,67096-003,REC	S.N.A
..2		AA61-40007A STOPPER-PCB;5038.5368,HIPS HB,-,NTR,-,-,	S.N.A
..2		AA63-50056B GRILLE-WOOFER;- ,5038,SV-704G,SECC,T0.5,-	
..2		AA64-10050C KNOB-CONTROL;- ,5038,G3676,ABS,HB,GRAY	
..2		AA64-10187G KNOB POWER;5038,ABS,-,G3676,NO-SILK,HB,-	
..2		AA64-31263Z CABINET FRONT;5038,SV704P EPN,HIPS,HB,G4	
...3		AA61-40010A BOSS-WING;- ,HIPS,HB,NTR,-,-	

ASSY CABINET

1	*	AA90-00200G ASSY CABINET;5038,CT50386X/XAP	S.N.A
..2	B/C	AA60-00091A SPACER-FELT;- ,FELT,150X10,-,-,BLK,T0.35,	S.N.A
..2	CB+CF	6003-001026 SCREW-TAPTITE;RH,+ ,B,M4,L15,ZPC(BLK),SWR	
..2	CB+RJ	6003-001026 SCREW-TAPTITE;RH,+ ,B,M4,L15,ZPC(BLK),SWR	
..2	CRT+CF	AA60-10050R SCREW-ASSY;- ,SWRCH18A,M5,L31.5,HH,+ ,WC,-	
..2	PA+CF	6006-001095 SCREW-ASS'Y TAPT;WP,BH,+ ,M4,L12,ZPC(YEL)	
..2		AA65-30107A CLAMP-D;COIL;NYLON 66,V2,NTR,-,20-22 INC	S.N.A
..2		AA65-30008A CLAMP-CORD;PE,HB,BLK,-,-,-	S.N.A
..2		AA64-30375B CABINET-BACK;- ,5073,38,-,HIPS,HB,BLK,-,-	

ASSY-CRT

△ 1	*	AA94-50019X ASSY-CRT;A48KRD82X(H),+380MG,20,BARE,-	S.N.A
..2		AA63-60028A SPACER-DY;- ,NEOPRENE,-,-,-,BLK,-,-,V0 W1	
..2		AA27-50004W DEFLECTION-YOKE;- ,DSE-1992LL(1H),PCL,A48	
..2		AA27-00002A MAGNET-CONVERGENCE;- ,JH291-SC-OB,29.1MM	
..2		AA03-10029W CRT-COLOR;- ,A48KRD82X(H),+380mG,20,90de	

Loc. No.	Code No.	Description ; Specification	Remark
----------	----------	-----------------------------	--------

ASSY-TBC,WIRE(P)

1	*	AA98-70014B ASSY-TBC,WIRE(P);- ,20,NTSC,1P,-	S.N.A
---	---	--	-------

ASSY-POWER,CORD

△ 1	*	AA96-20109C ASSY-POWER,CORD;- ,CP2/NO(4.0),H/C300,KKP	
..2		3811-000401 WIRE-PVC CU-BCWA,300V,ROLL,17/0.16mm,#22	S.N.A
..2		AA39-10006X POWER-CORD;- ,KKP419C,KLCE-2F,2.286MT,3P,	S.N.A
..2		AA61-20284A HOLDER;- ,P-CORD,PPVO,BLK,KE-002	S.N.A

ASSY-ACCESSORY

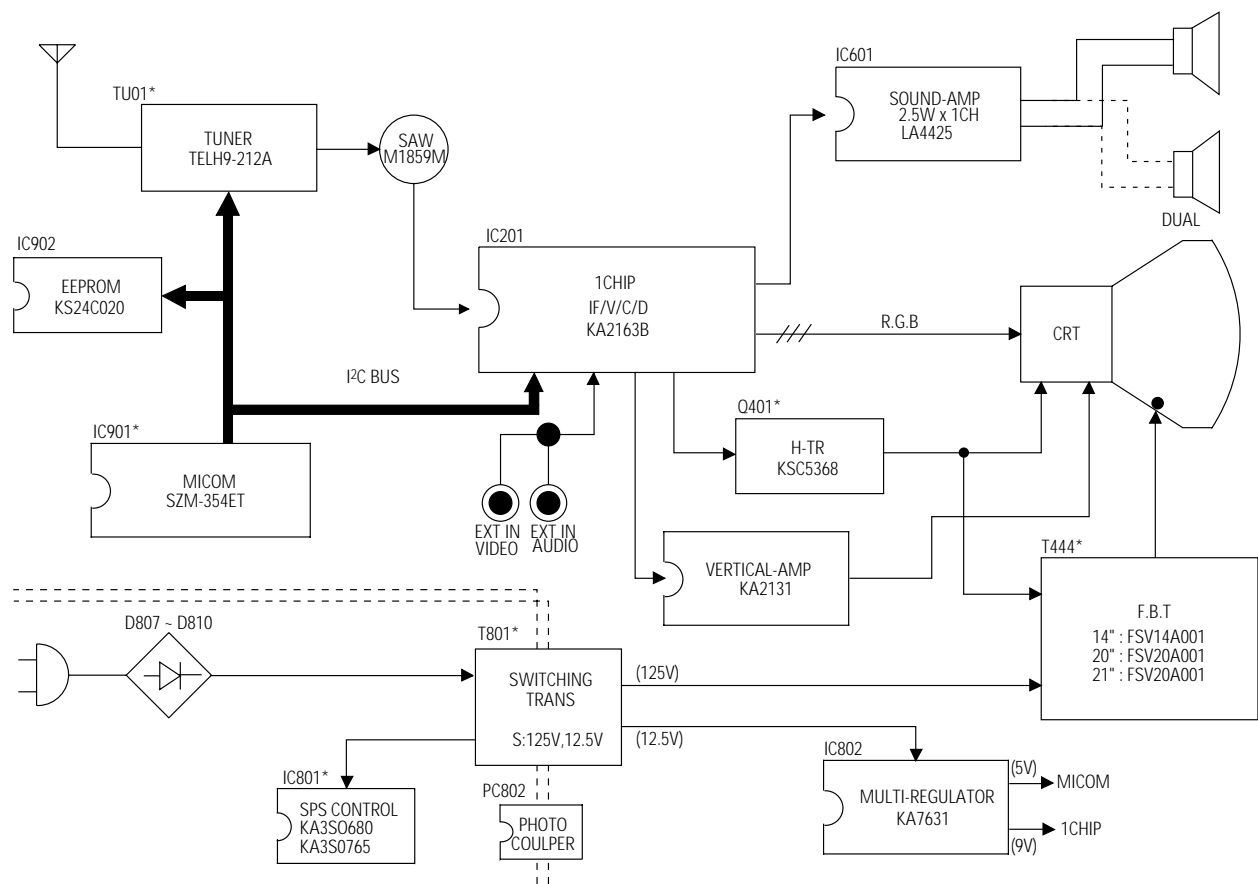
1	*	AA94-30079Y ASSY-ACCESSORY;CT501EBZX/XAP,K15A,LATIN	S.N.A
..2		AA68-00569D MANUAL USERS;- ,ENG,W/P100(G),A5,K15A,40PA	
..2		AA68-11251A MANUAL-USERS;KCT15A,SPA,TM59,205X150,A/P	
..2		AA42-10001V ANT-ROD;- ,3S,620mm,BRN,UL/CSA	
..2		AA26-90001F TRANS-MATCHING;- ,300ohm/75ohm,NTSC,40-89	
..2		3721-000136 PLUG-CONVERSION;2P,4.0mm,N,NI	

REMOCON

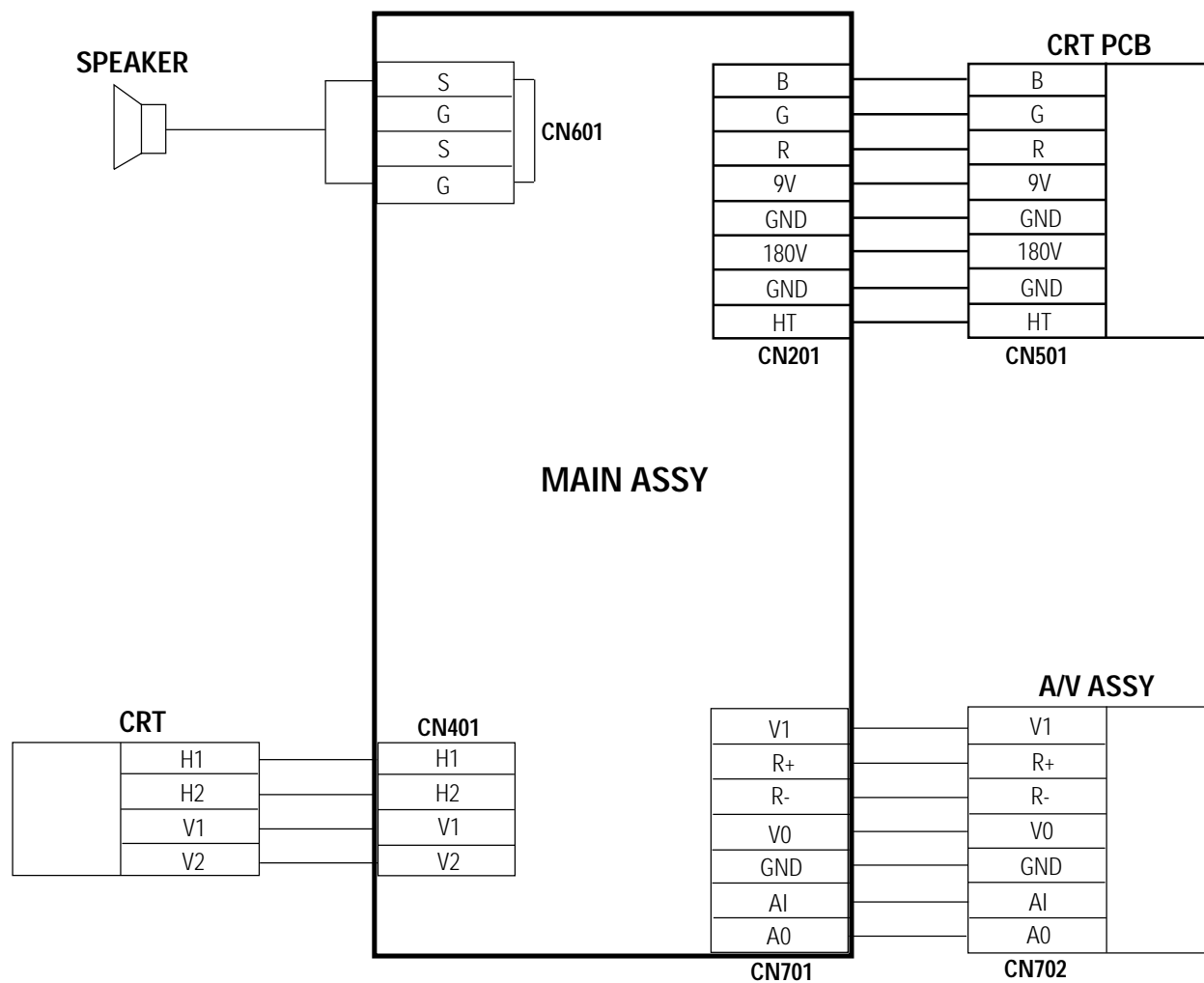
1	*	AA59-10095T REMOCON;- ,TM59,SS,SZM354EP,25,-,-,L/GR	
---	---	---	--

MEMO

8. Block Diagram

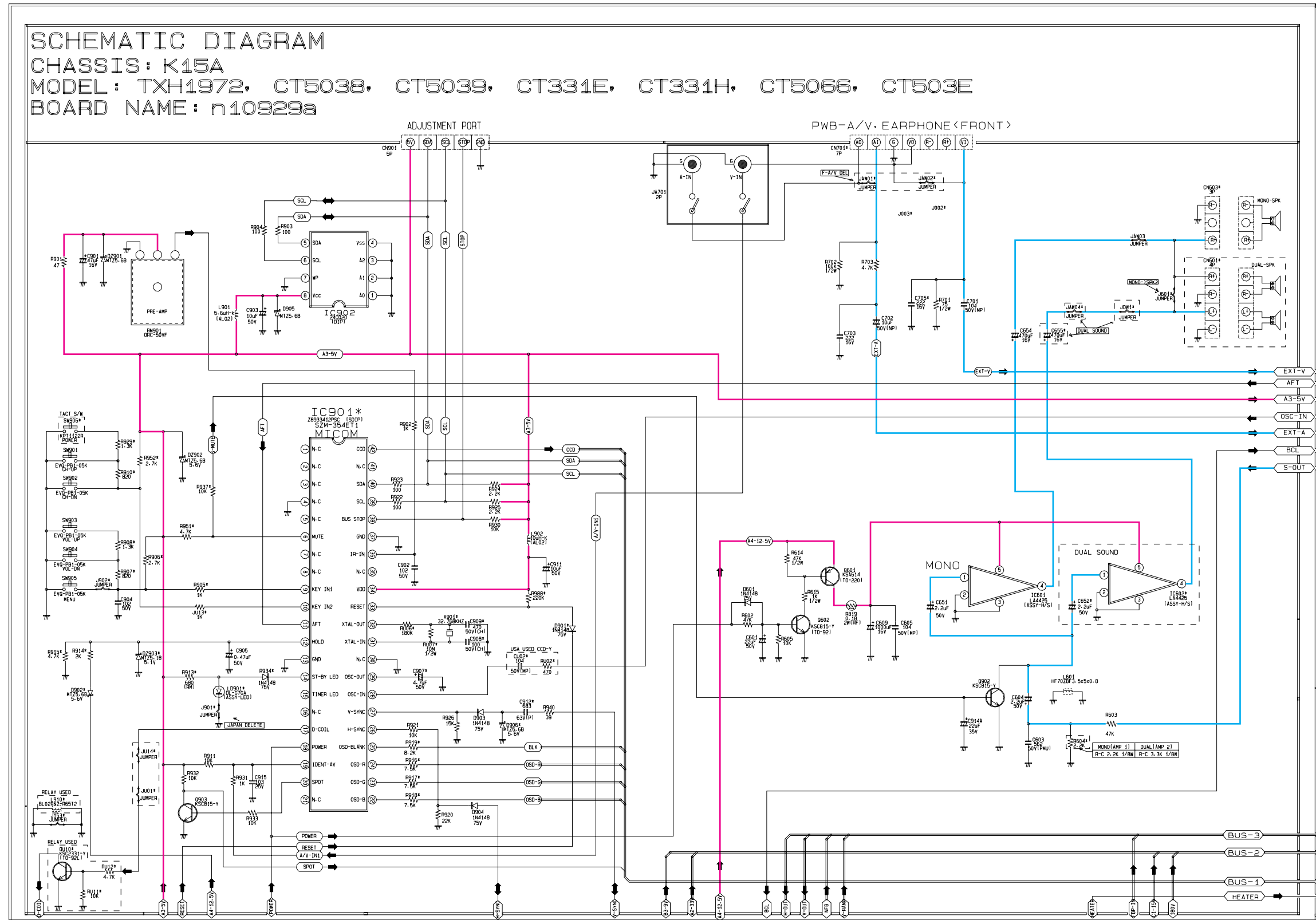


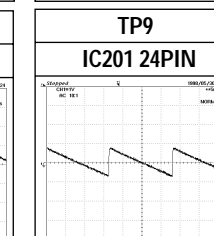
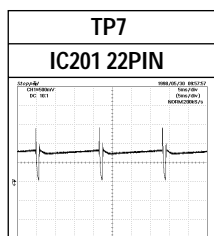
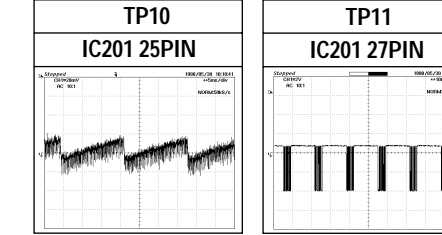
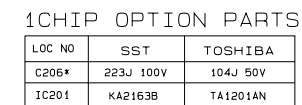
10. Wiring Diagram



11. Schematic Diagrams

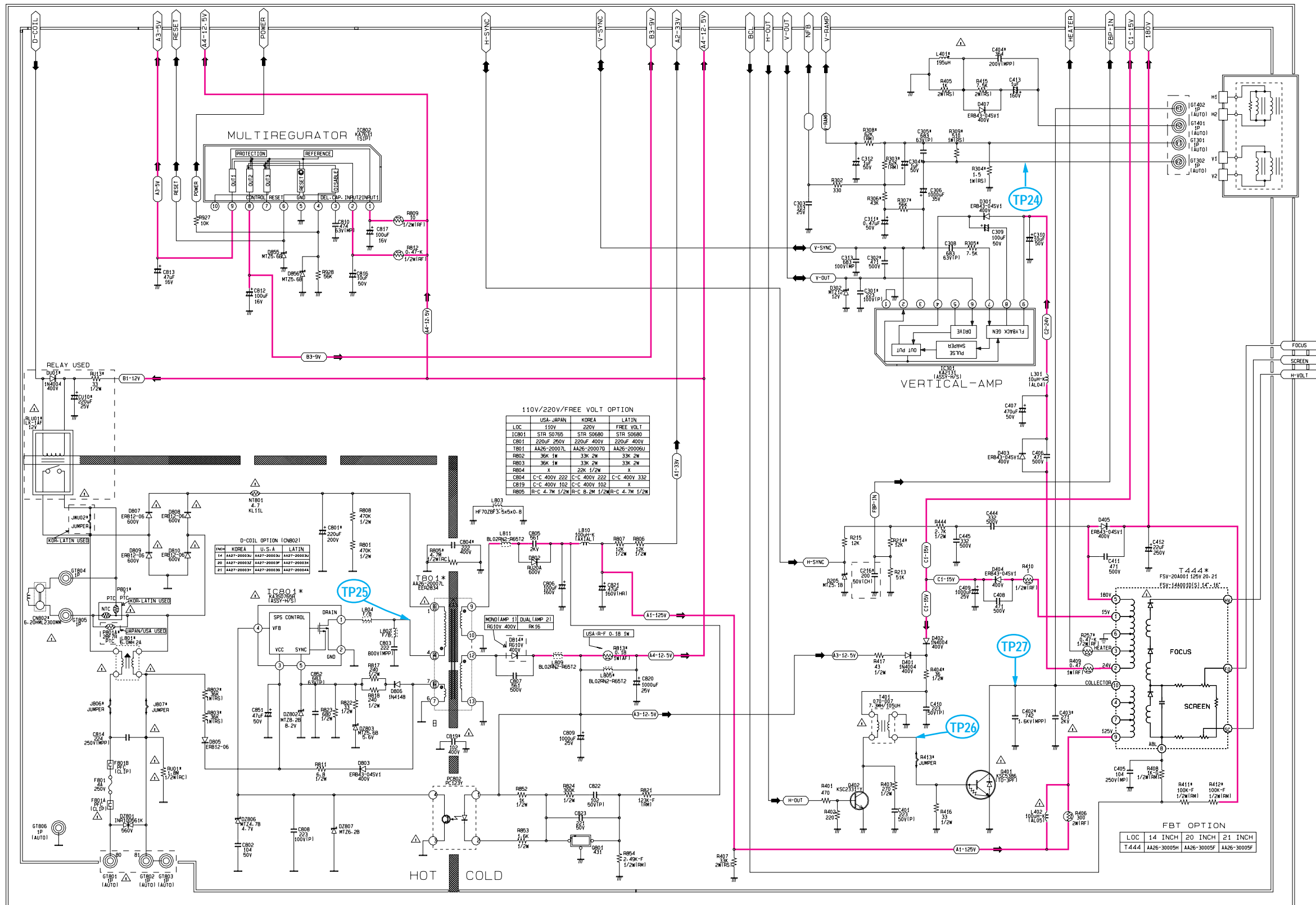
11-1 MAIN 1/4



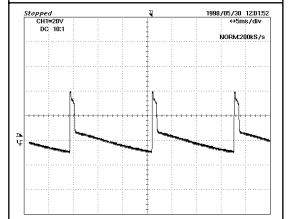


 : Power Line
 : Signal Line

11-3 MAIN 3/4

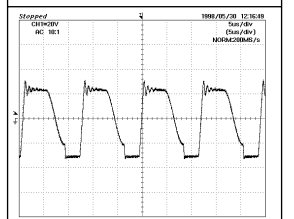


TP24

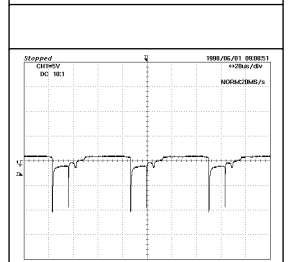


TP25

IC801 1 PIN

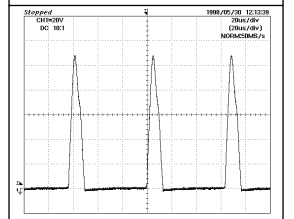


TP26



TP27

T444 10 PIN



: Power Line

11-4 MAIN 4/4

