

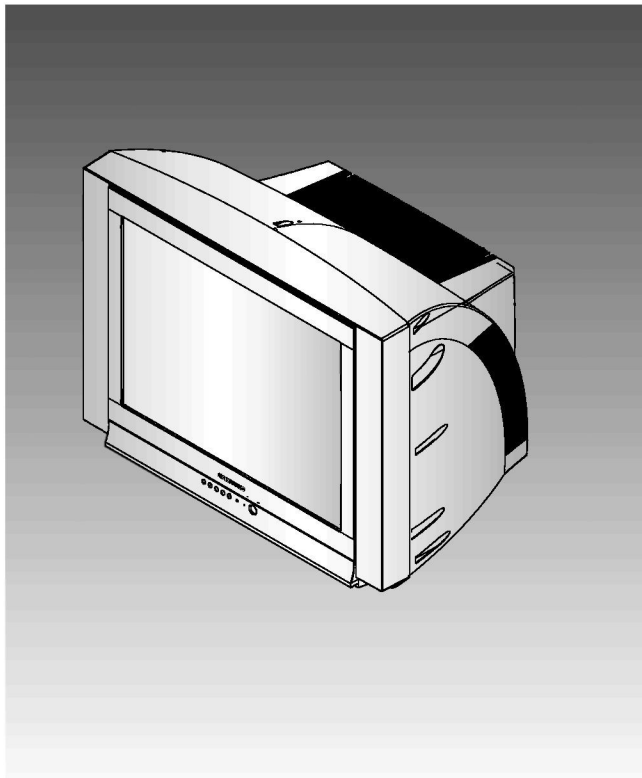


# DIGITAL TELEVISION RECEIVER

Chassis : KS7A(P) REV.1  
Model : CS29K5MHUX/AAG  
CS29M6MBUX/XST

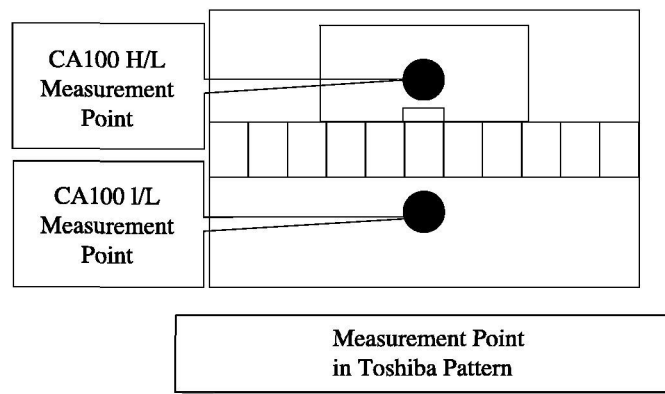
# ***SERVICE*** Manual

## DIGITAL TELEVISION RECEIVER



## CONTENTS

1. Specifications
2. Alignment and Adjustments
3. Exploded Views and Parts List
4. Electrical Parts List
5. PCB Diagram
6. Schematic Diagrams



## 2-7 When adjusting Screen Voltage and White Balance

1. Screen Voltage and White Balance are related each other. Make sure both adjustments are correct.
2. Adjust Screen Voltage before White Balance Adjustments. Make sure Screen Voltage is correct.
3. If White Balance has been readjusted, re-check Screen Voltage.
4. After adjustments are complete, check the following.
  - If spots appear on the screen after pressing the Power On/Off key, readjust Screen Voltage.
  - If flyback lines appear on the screen, readjust Screen Voltage.

## 2-8 Factory Adjustment

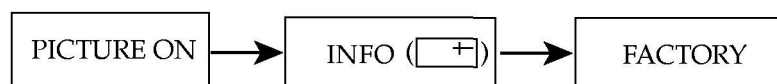
### 2-8-1 Service Mode

1. To enter the "Service Mode", Press the remote-control keys in this sequence :

- If you do not have Factory remote-control



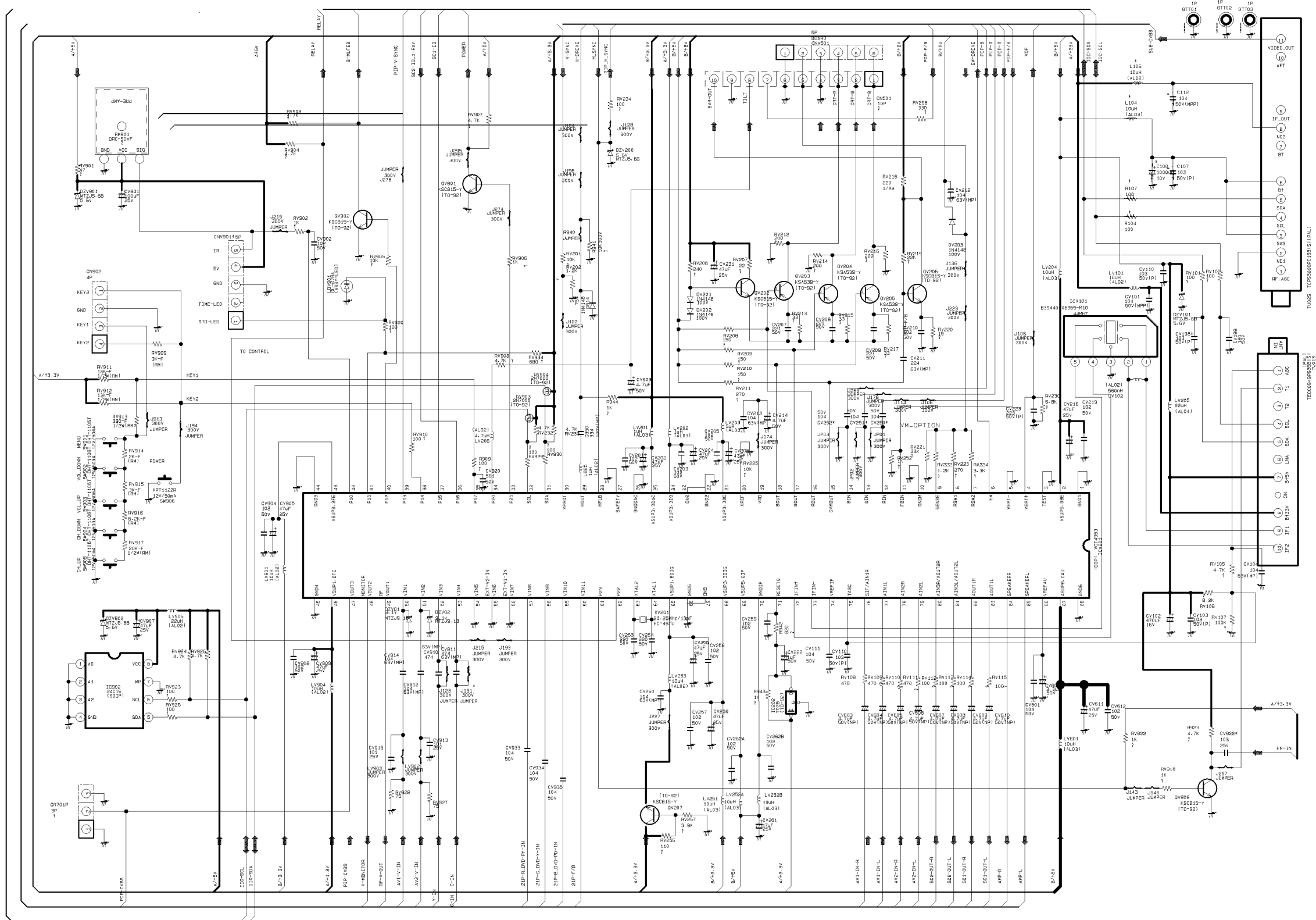
- If you have Factory remote-control



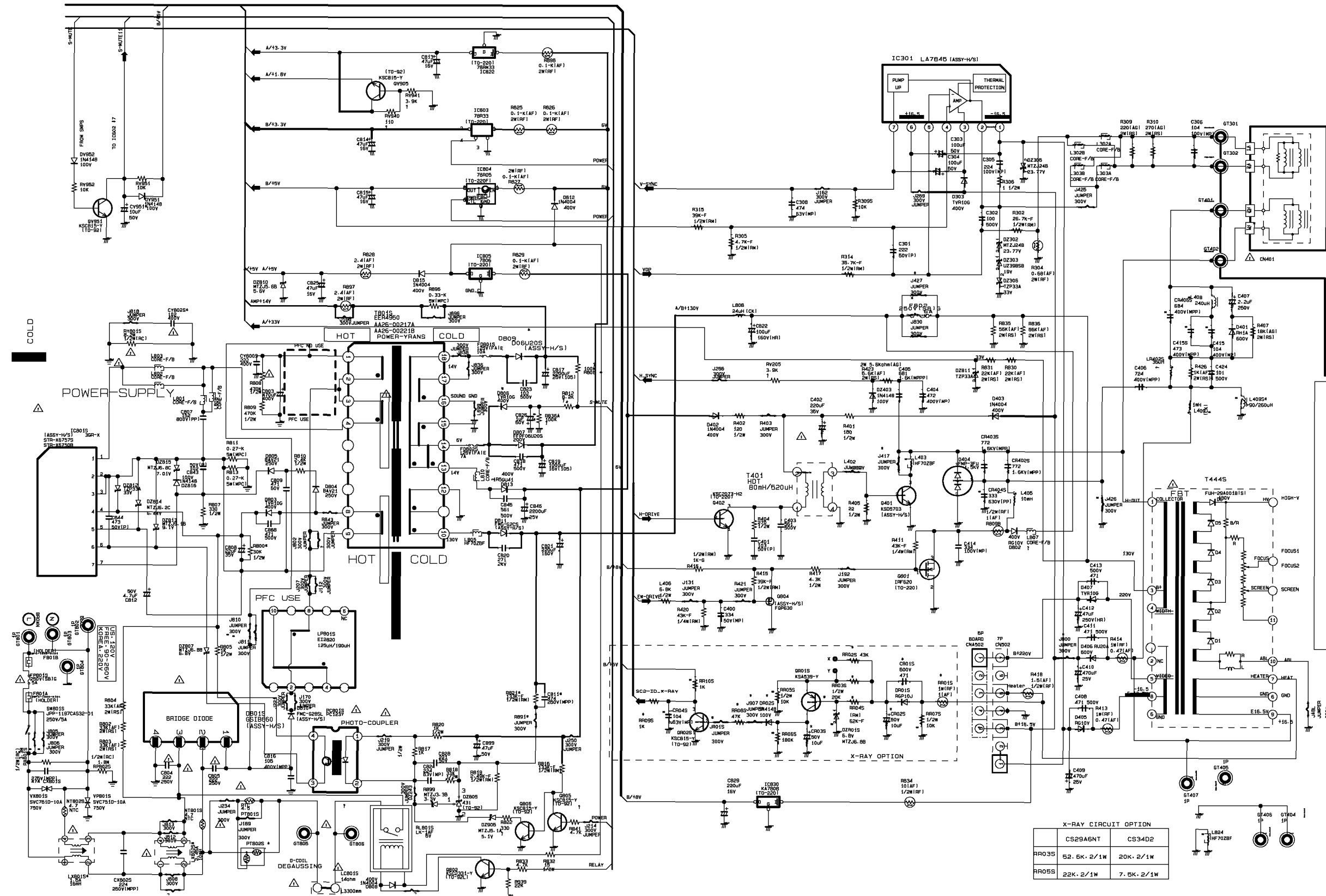
## 6. Schematic Diagrams

## 6-1 MAIN

This Document can not be used without Samsung's authorization.



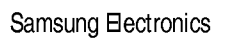
POWER BLOCK  
BASIC CHASSIS : QUEST, KS2A, KS3A



Samsung Electronics

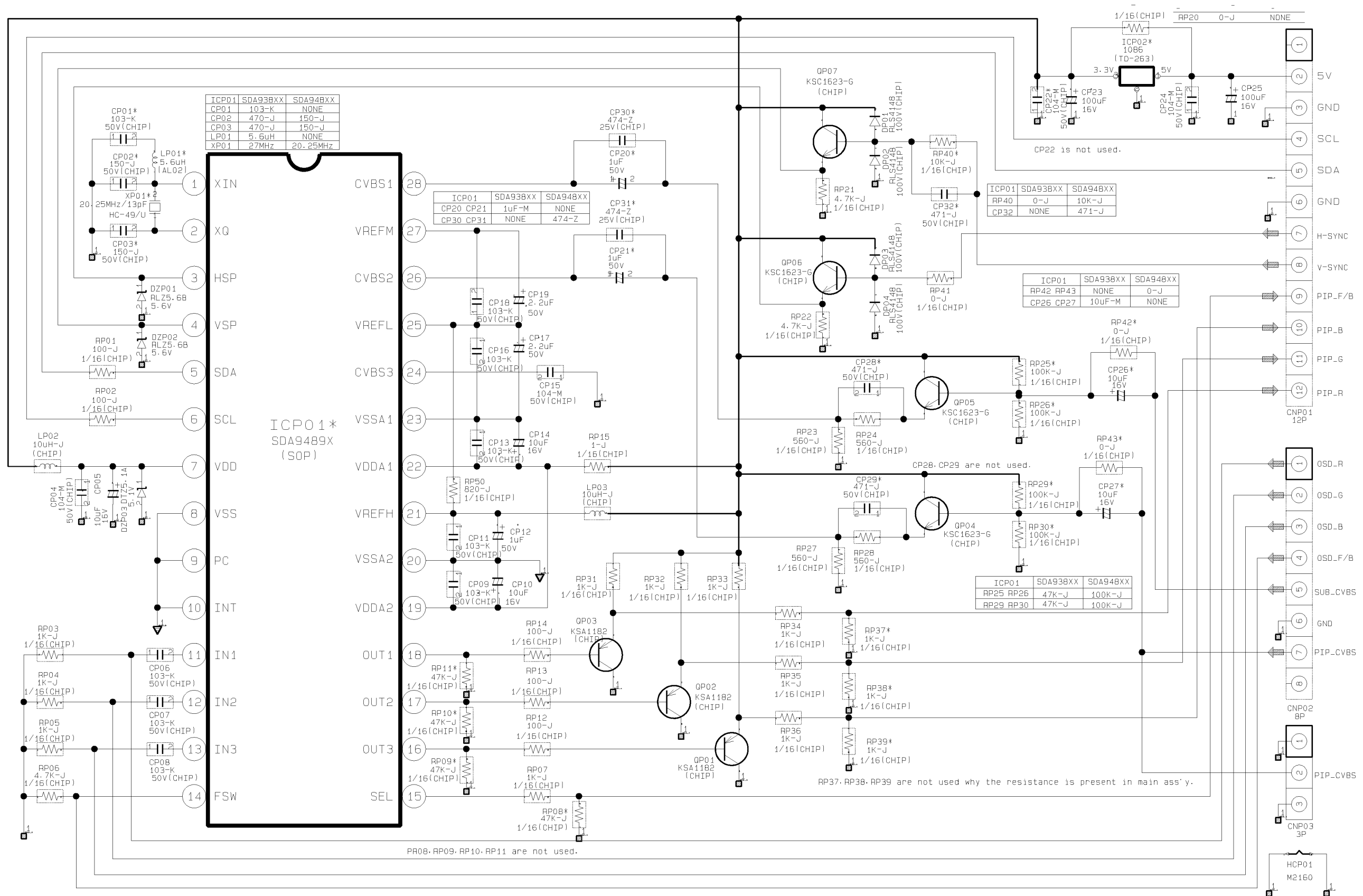


6-4

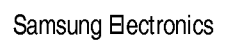


## 6-5 PIP MODULE

This Document can not be used without Samsung's authorization.



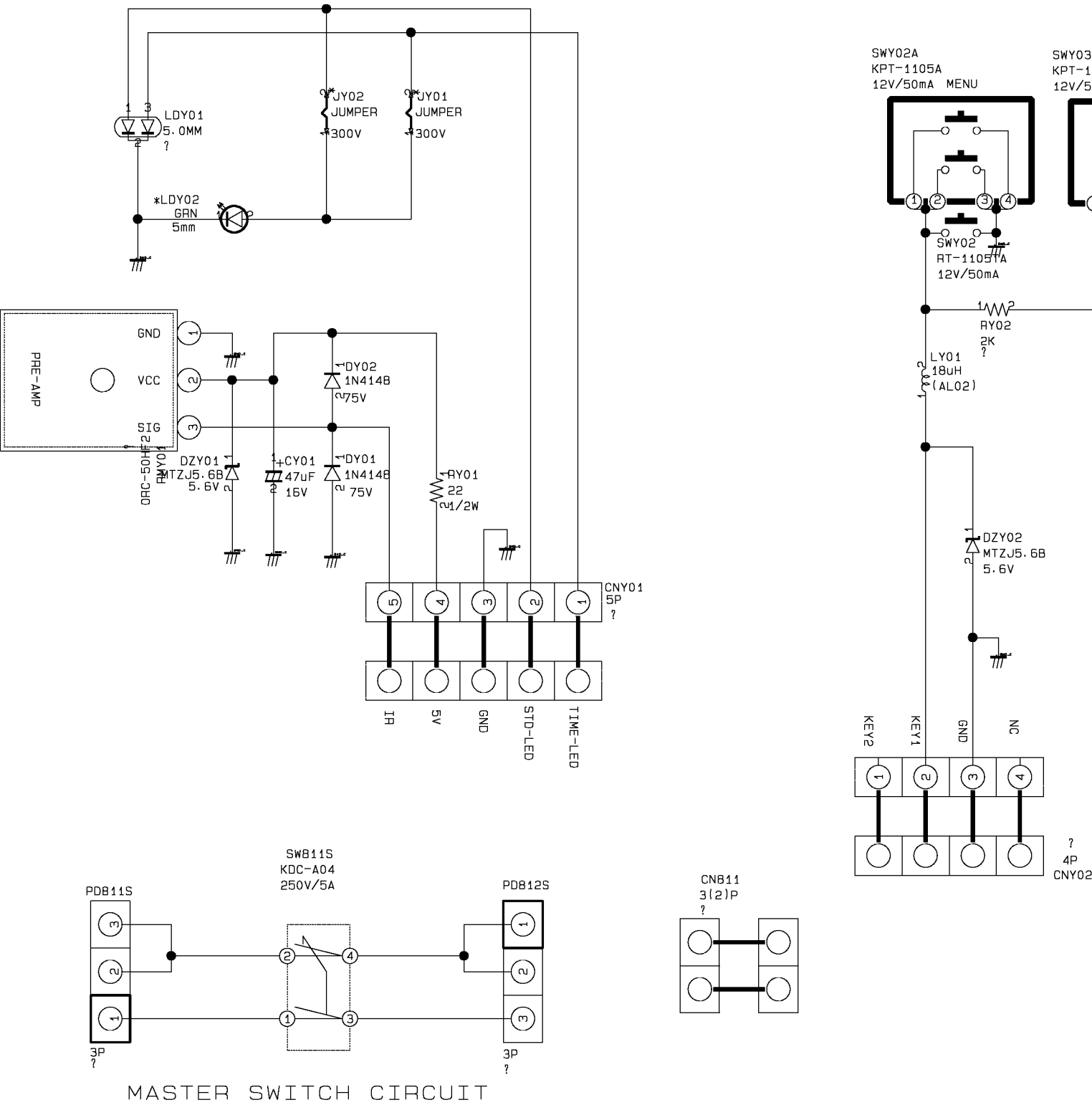
6-6





6-7 CONTROL

This Document can not be used without Samsung's authorization.



6-8 A/V SIDE

This Document can not be used without Samsung's authorization.

