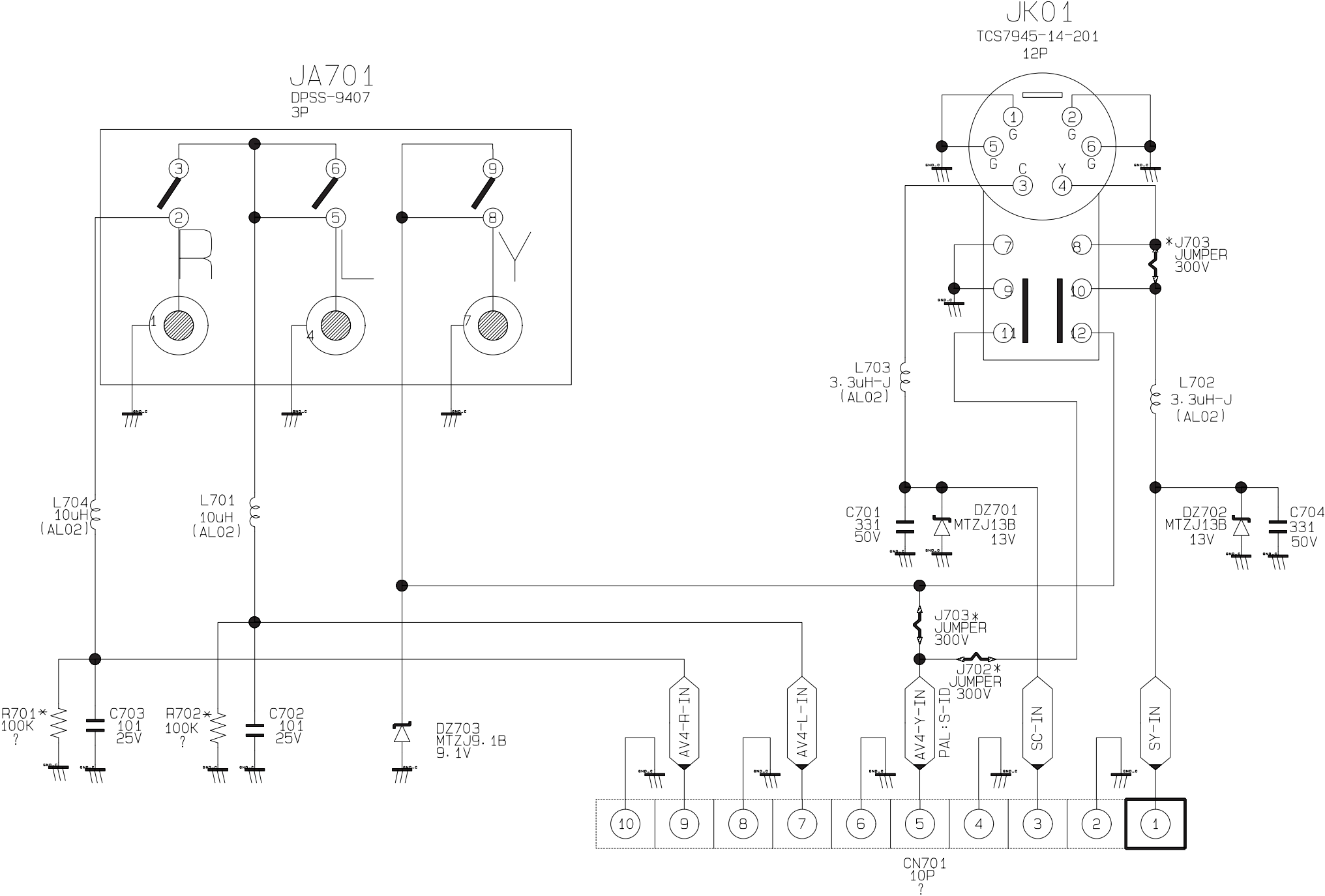


10. Schematic Diagram

10-1 AV\_Mono

This Document can not be used without Samsung's authorization.

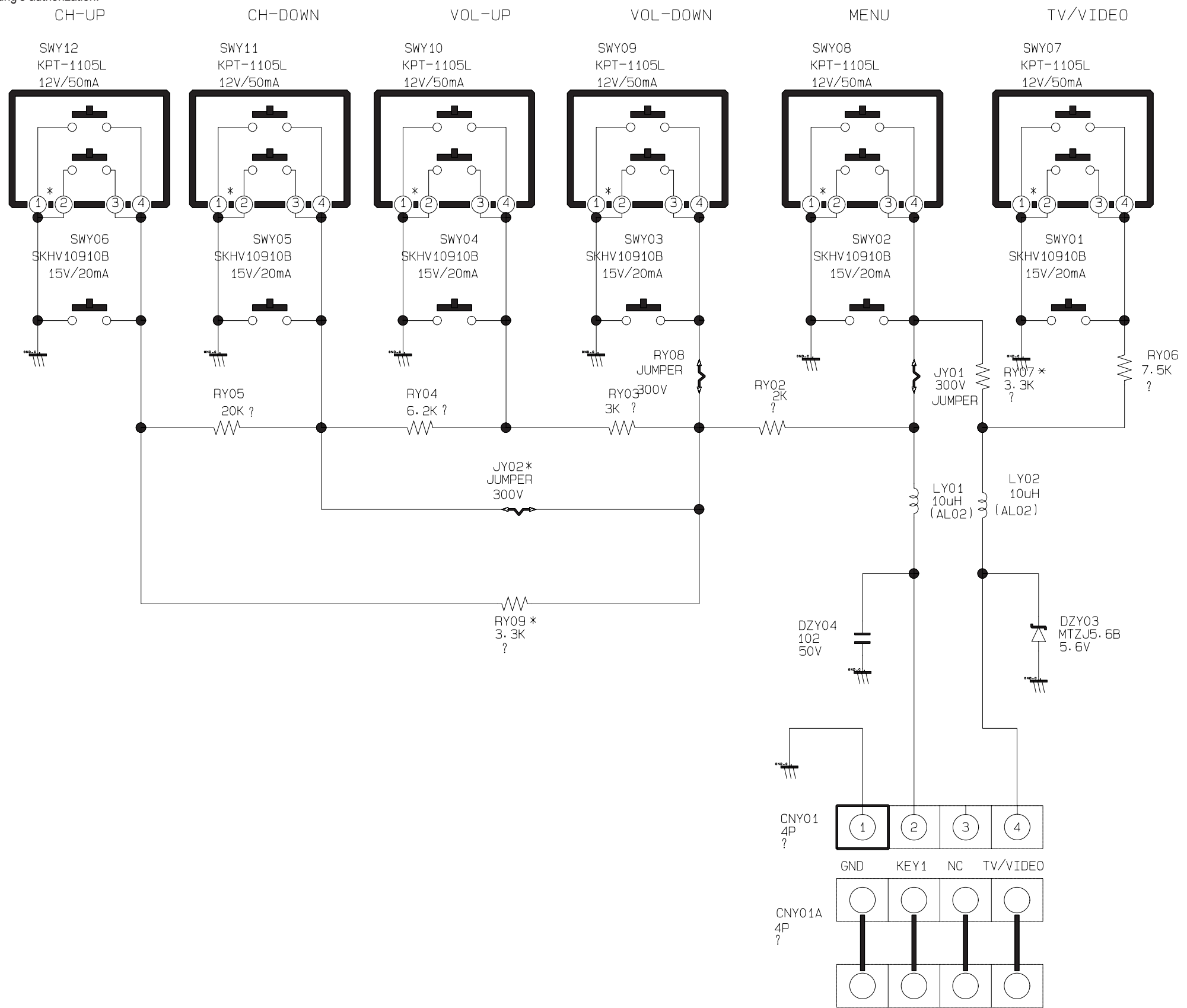


OPTION

LOC	NT	PAL
J701	DELETE	JUMPER
J702	DELETE	JUMPER
J703	JUMPER	DELETE
R701	DELETE	1/8W 100K
R702	DELETE	1/8W 100K

10-2 CONTROL\_Mono

This Document can not be used without Samsung's authorization.

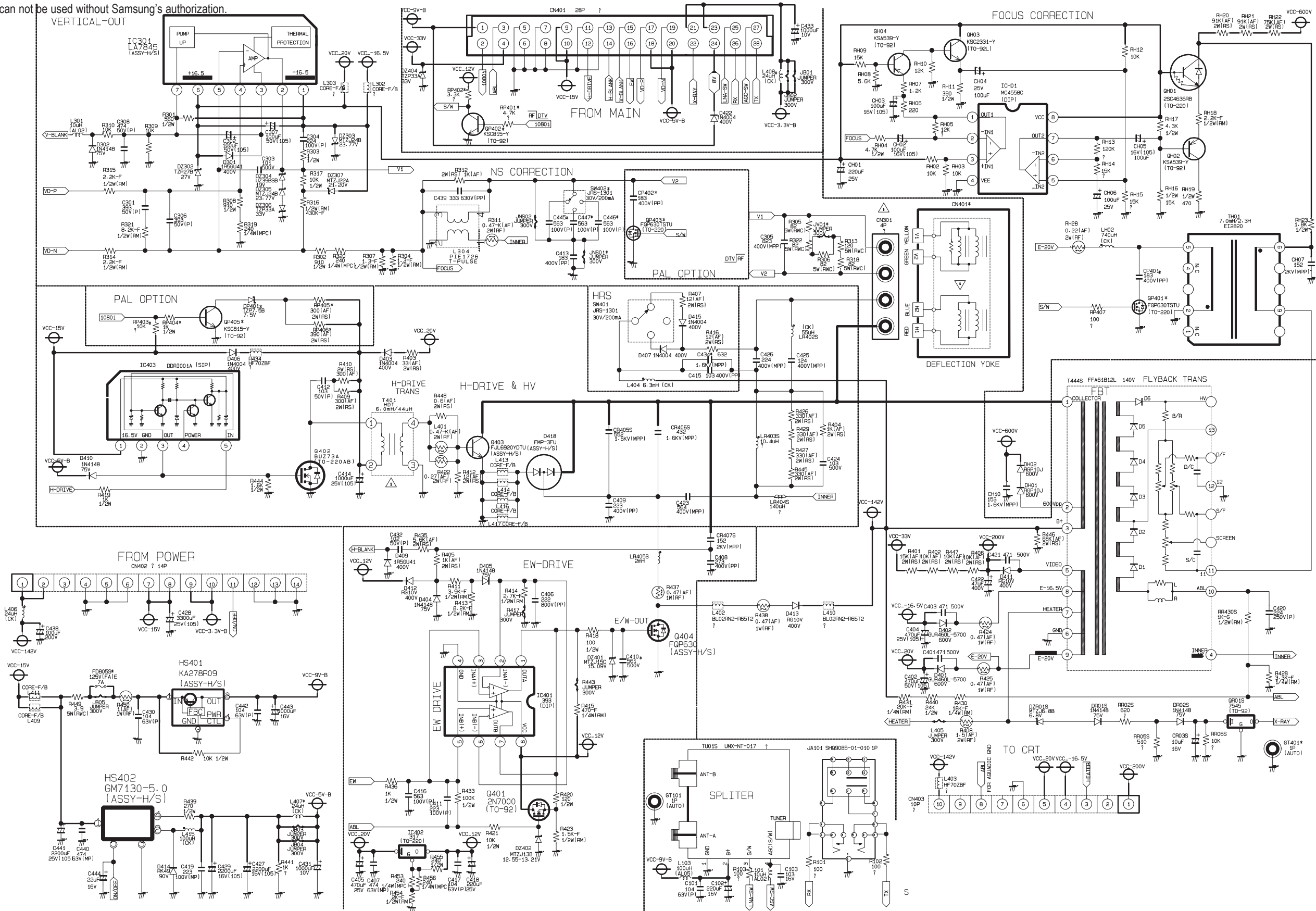


Samsung Electronics



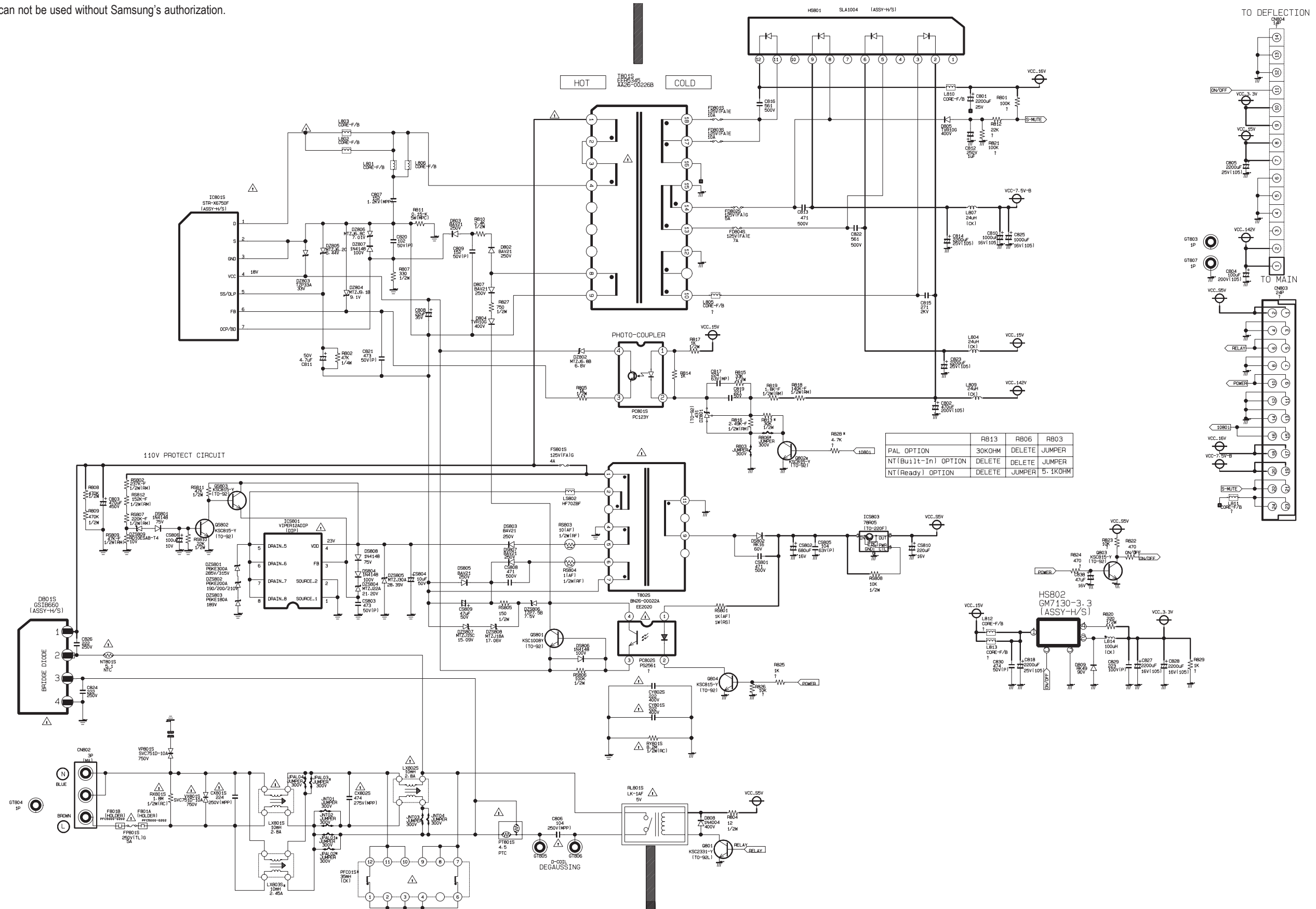
10-4 DEFLECTION\_Mono

This Document can not be used without Samsung's authorization.



## 10-5 POWER\_Mono

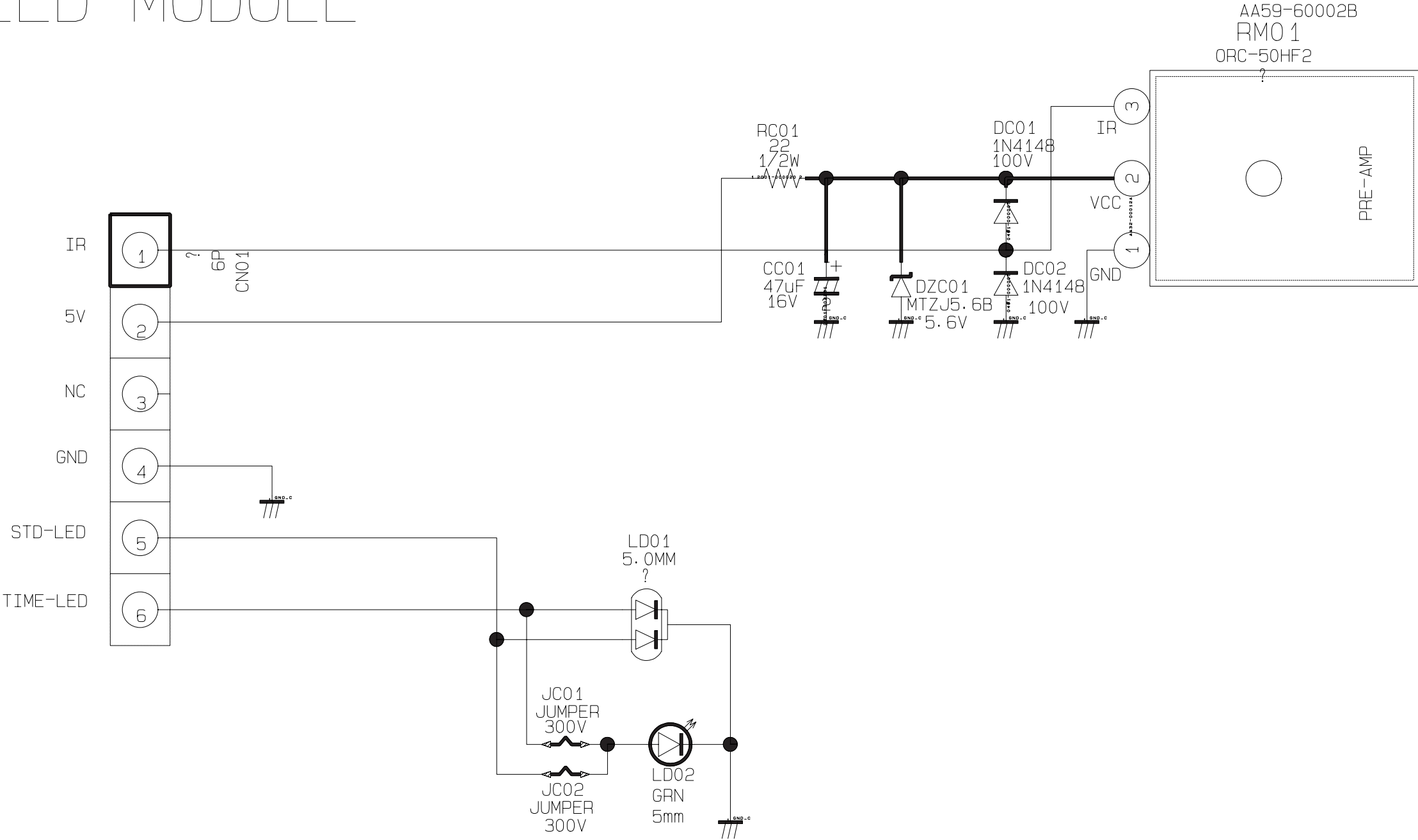
This Document can not be used without Samsung's authorization.



10-6 MASTER\_Mono

This Document can not be used without Samsung's authorization.

Z30 LED-MODULE

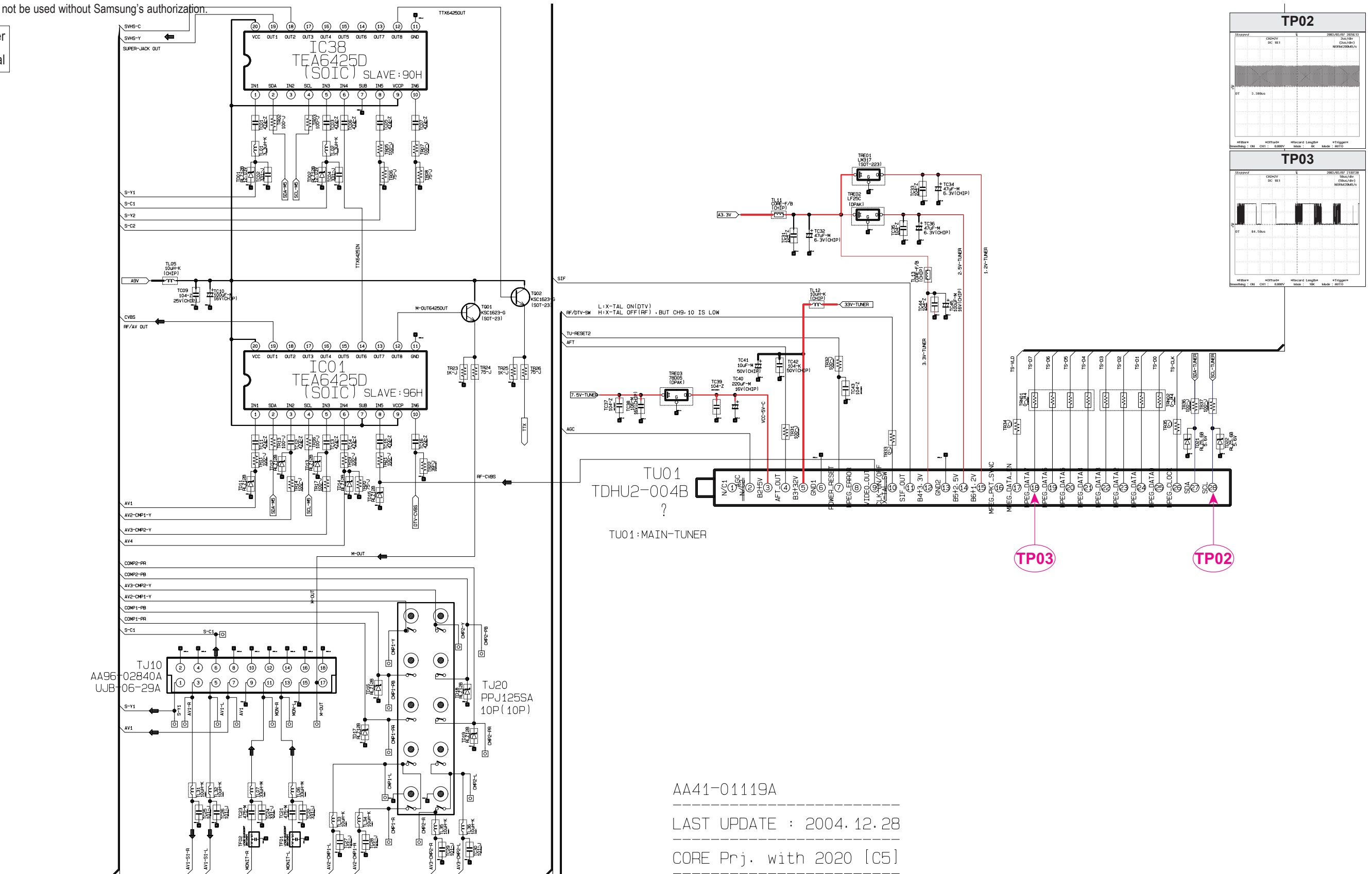
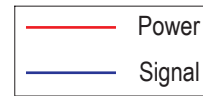




### 10-7-1 CORE TUNER & CONNECTORS

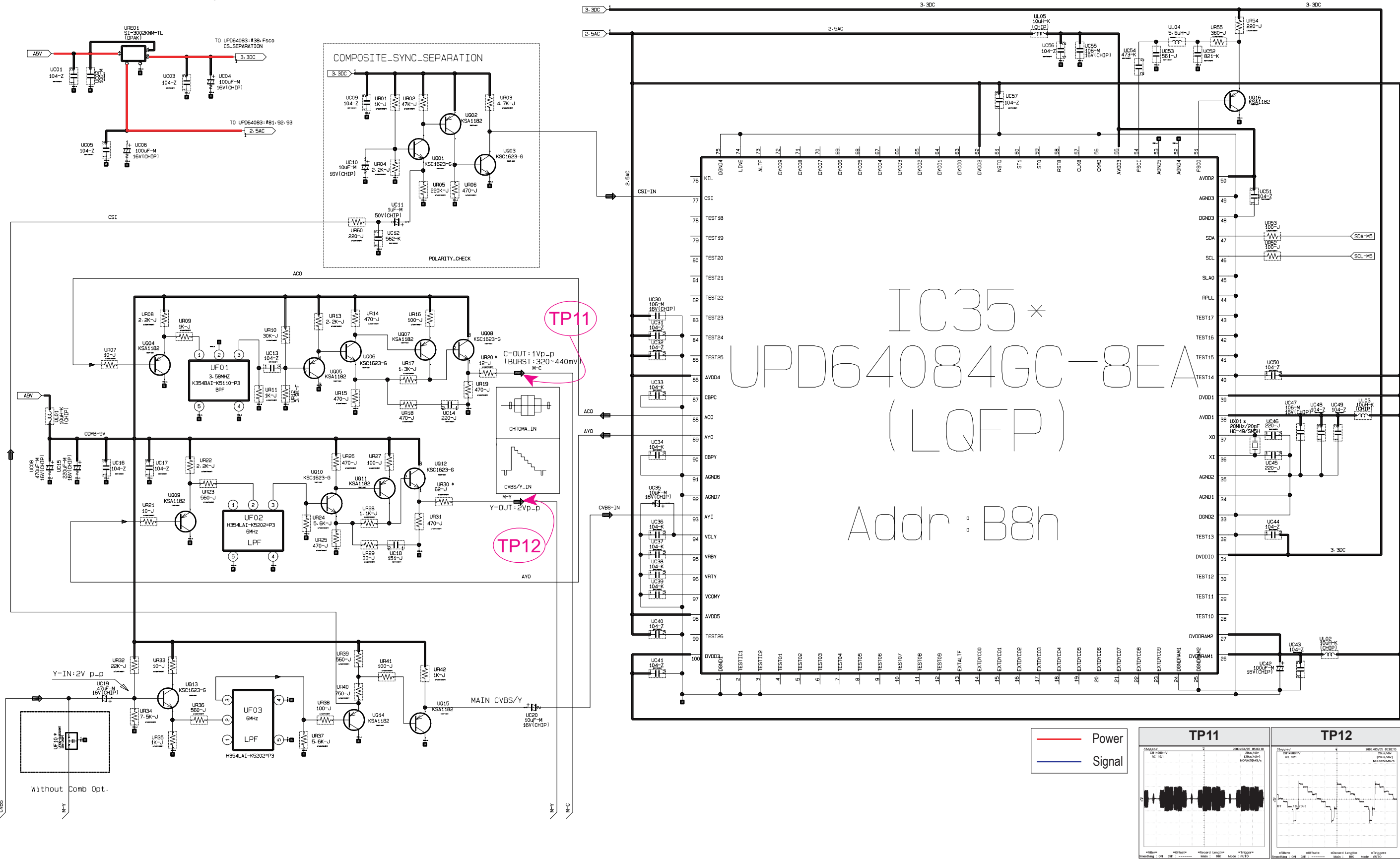
### 10-7-1 CORE TUNER & CONNECTORS

This Document can not be used without Samsung's authorization.



10-7-2 CORE TUNER & CONNECTORS

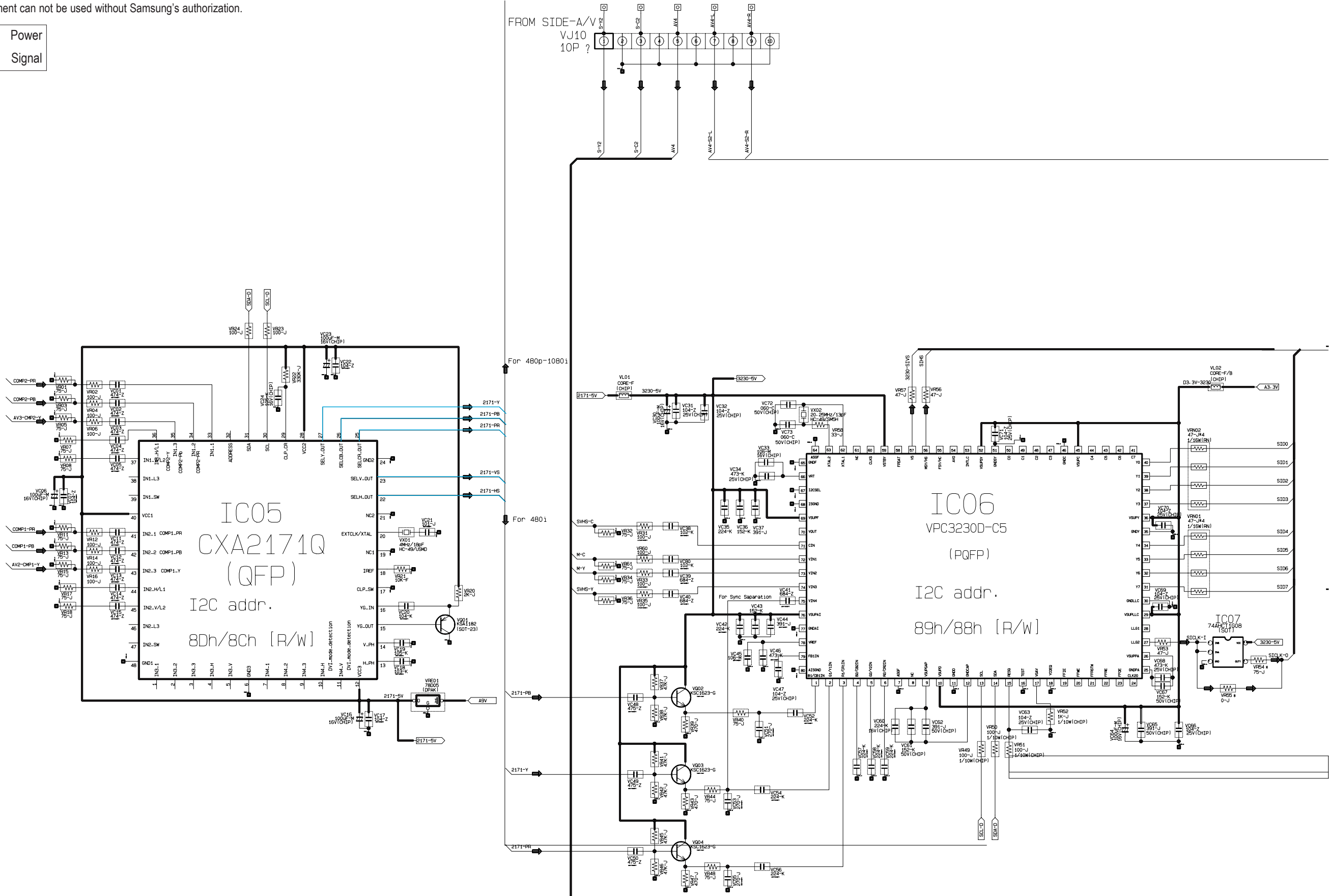
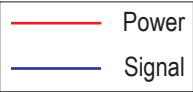
This Document can not be used without Samsung's authorization.





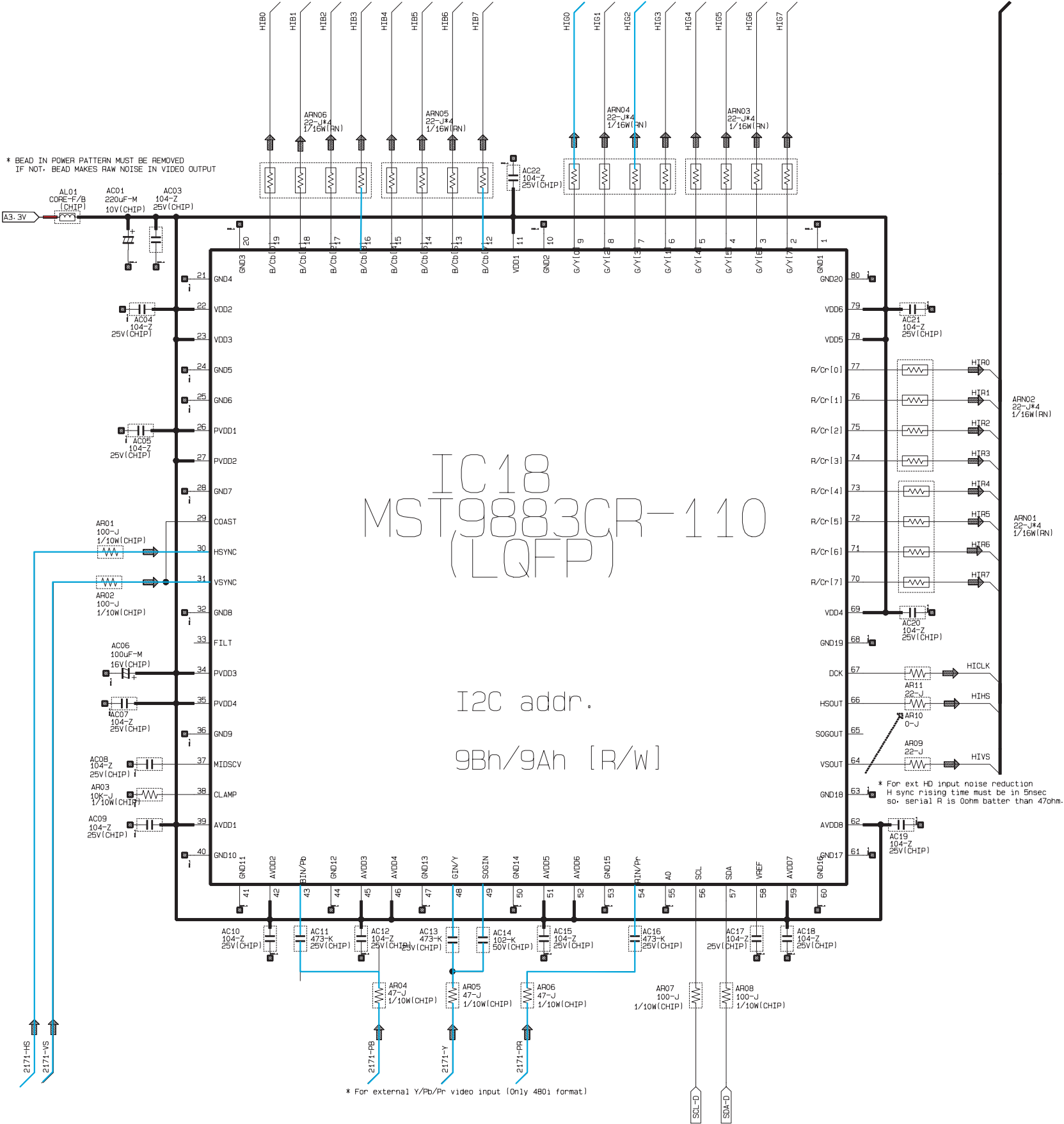
10-7-3 CORE SD VIDEO INPUT

This Document can not be used without Samsung's authorization.



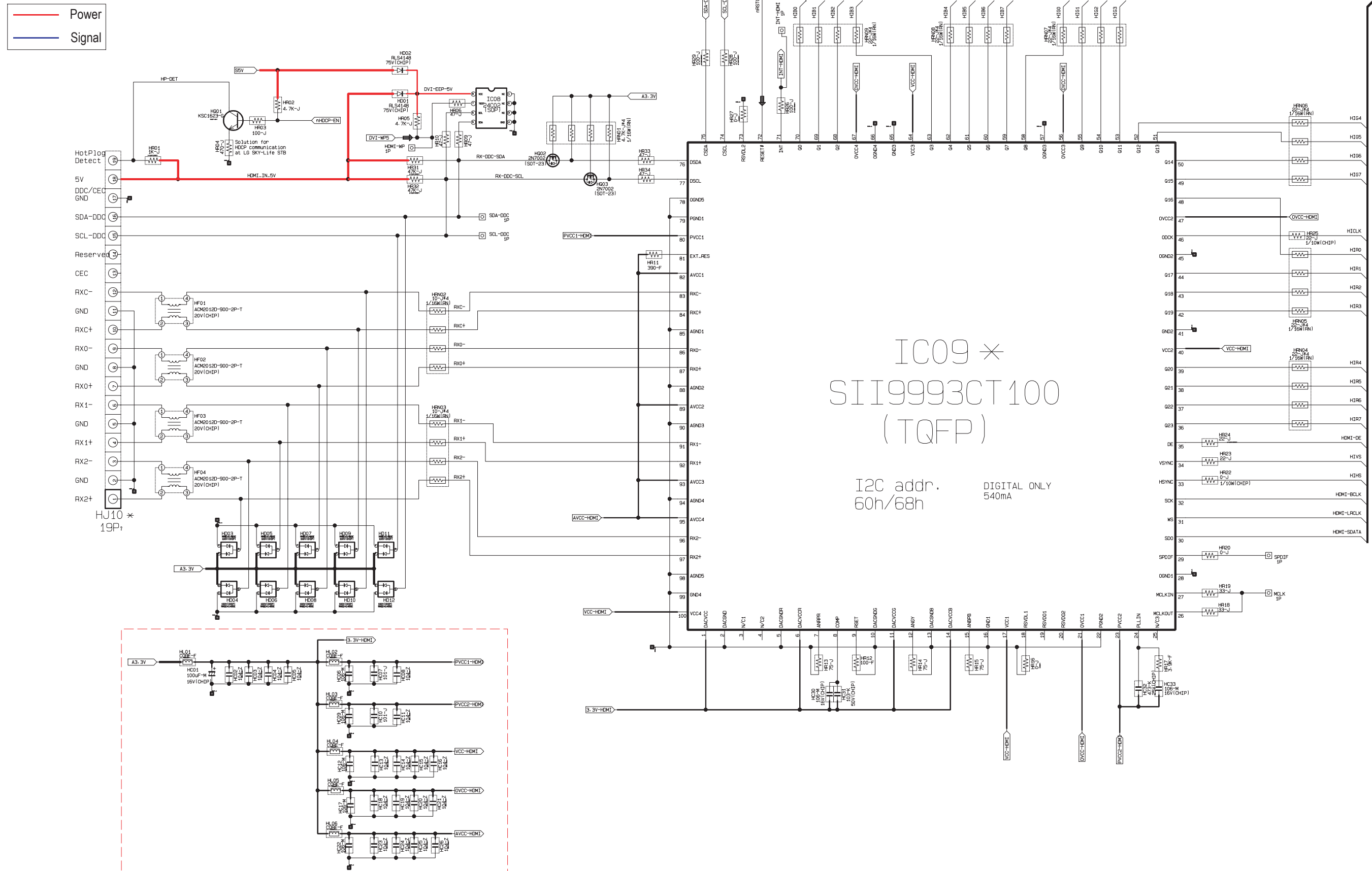
10-7-4 CORE EXTERNAL HD VIDEO INPUT

This Document can not be used without Samsung's authorization.



### 10-7-5 CORE EXTERNAL HDMI INPUT

This Document can not be used without Samsung's authorization.



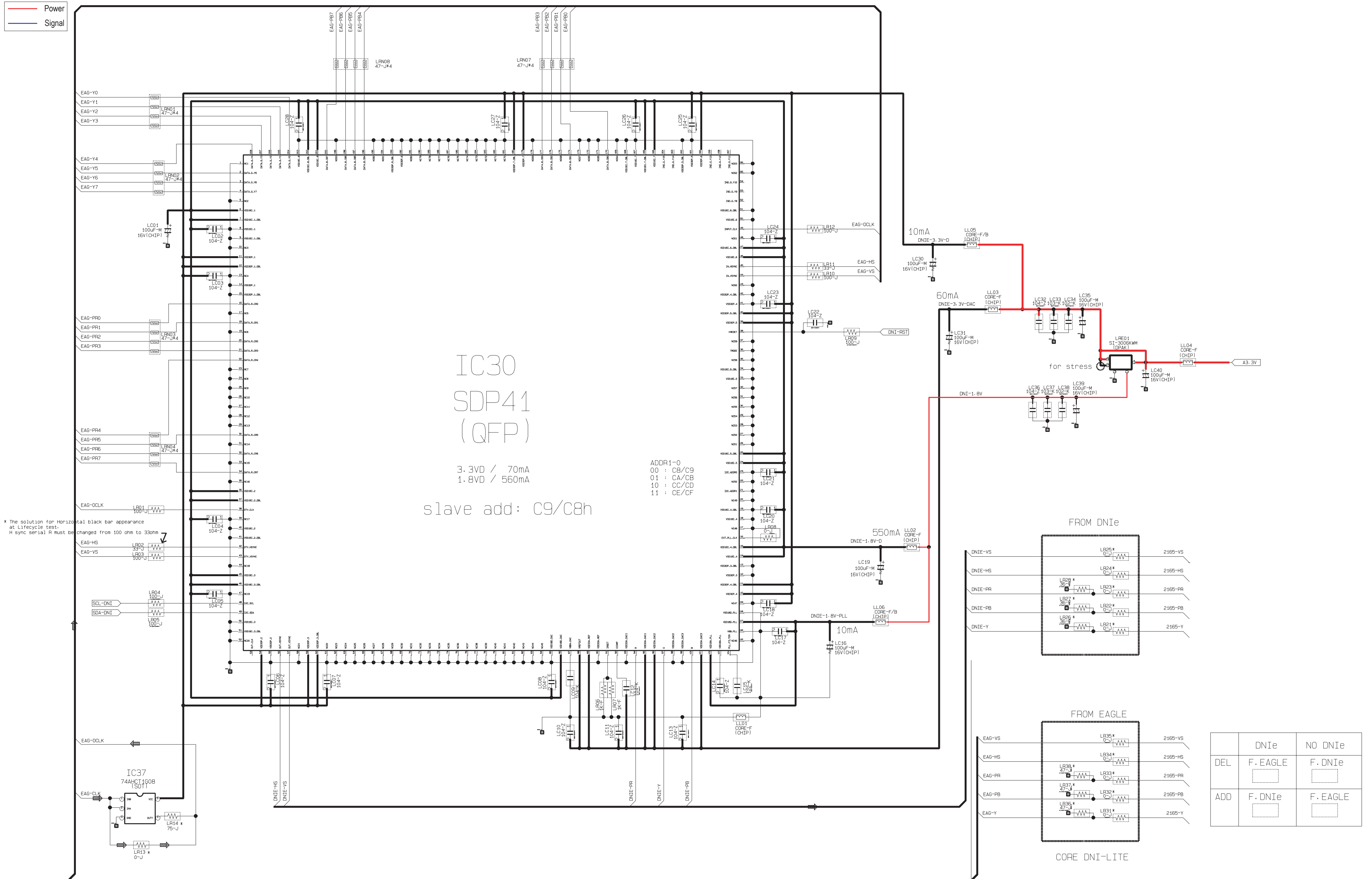
This Document can not be used without Samsung's authorization.



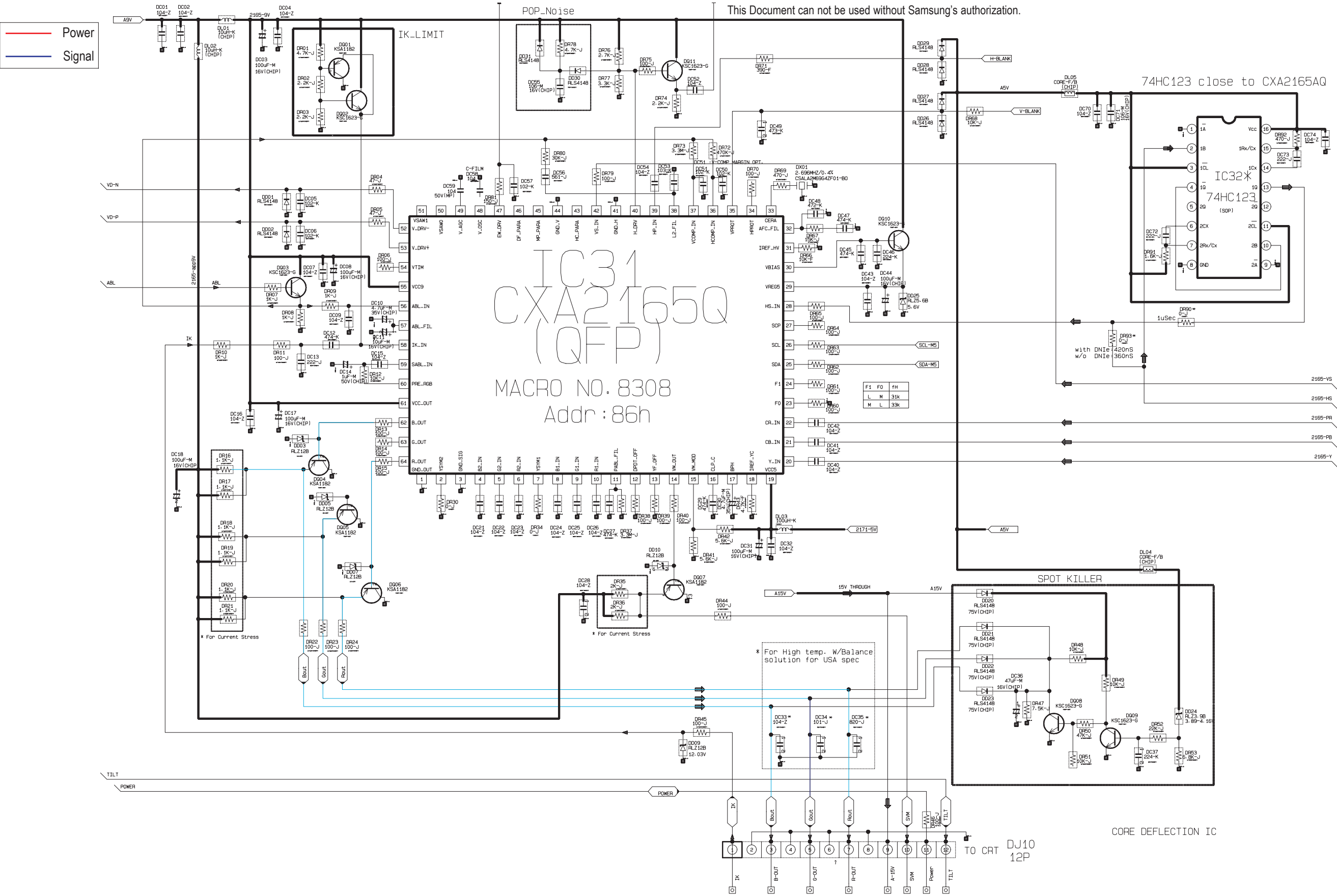


10-7-7 CORE DNIE-Lite (KOREA Only)

This Document can not be used without Samsung's authorization.



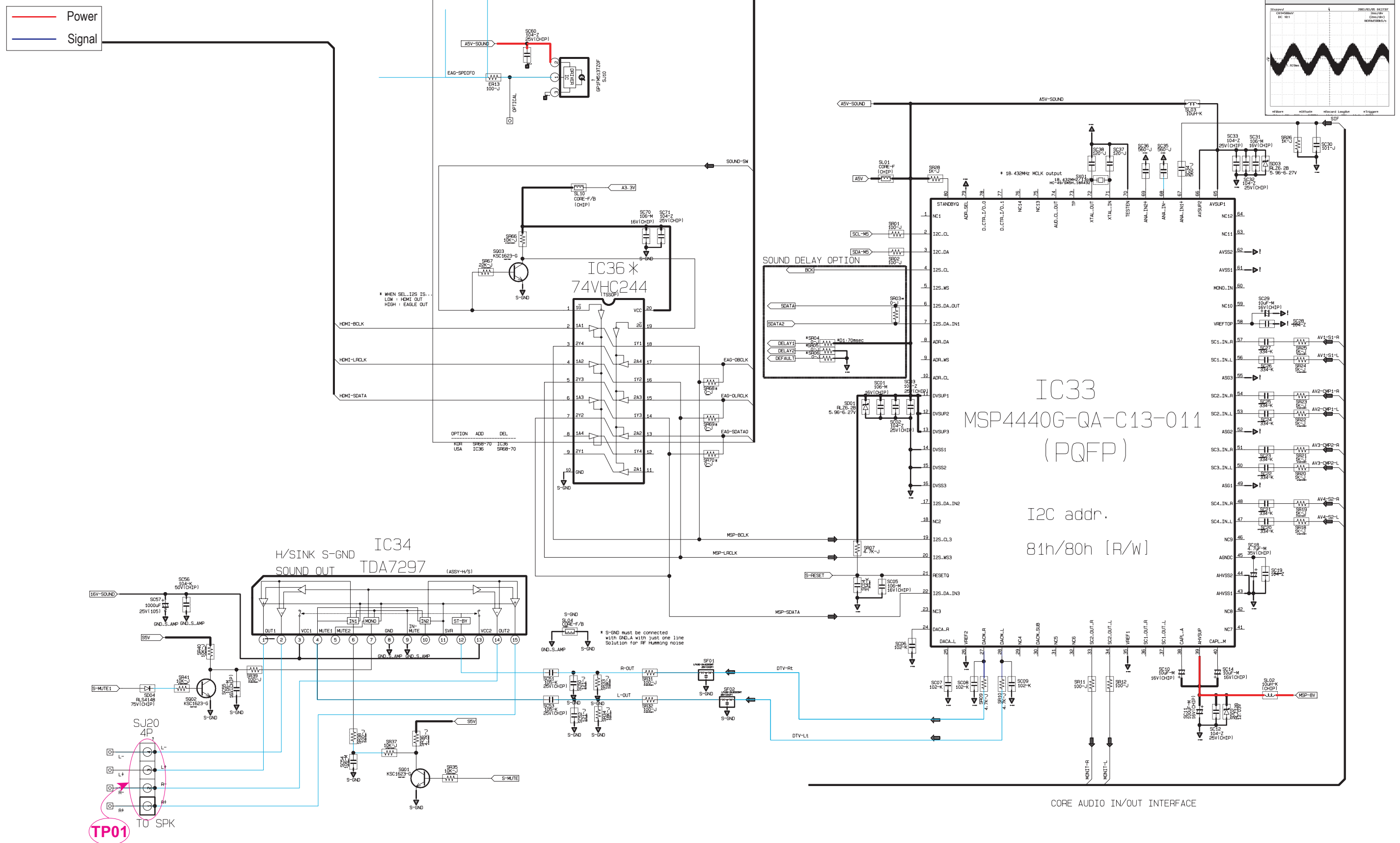
10-7-8 CORE DEFLECTION IC





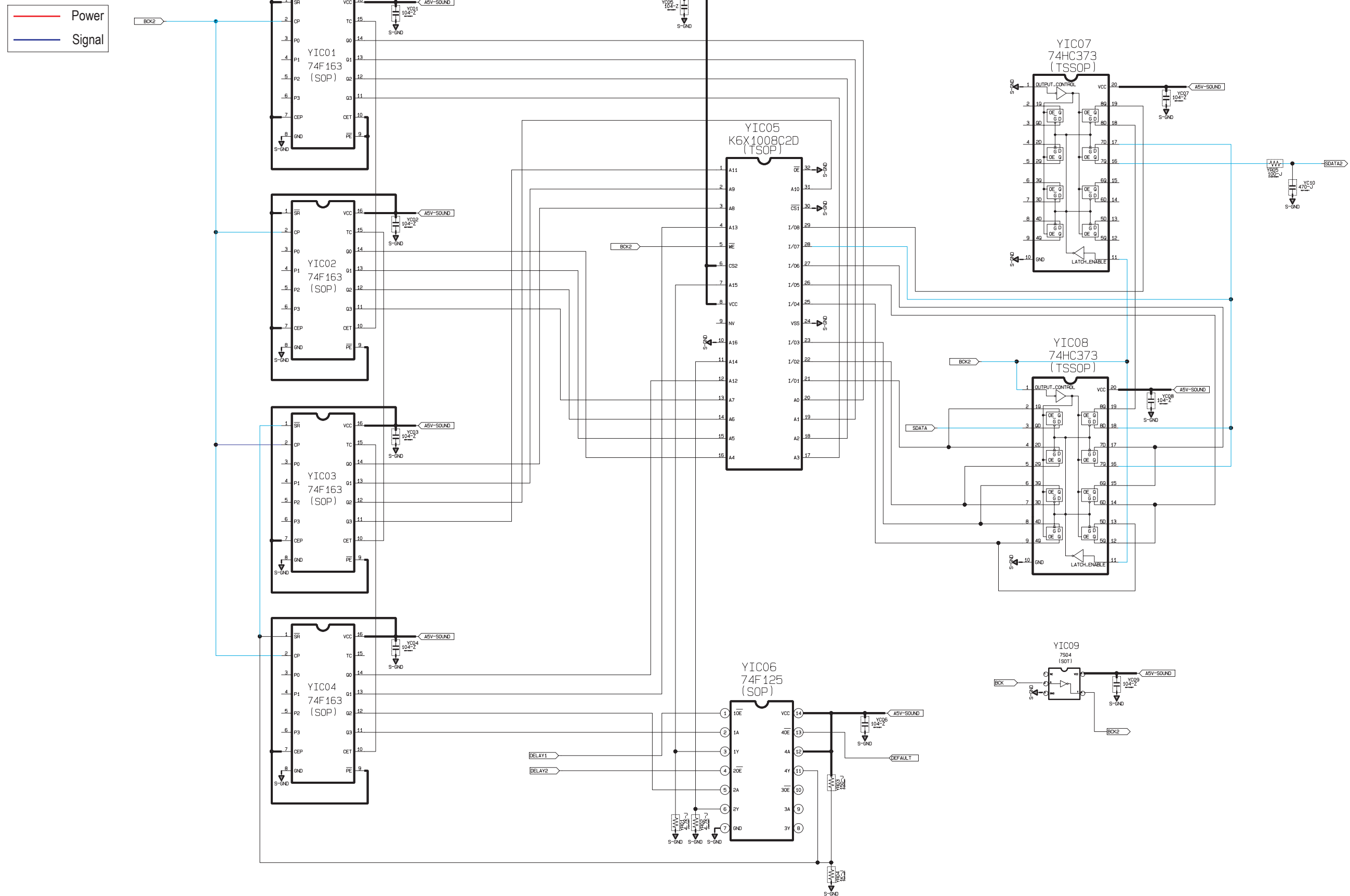
### 10-7-9 CORE AUDIO IN\_OUT INTERFACE

This Document can not be used without Samsung's authorization.

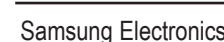


## 10-7-10 SOUND DELAY

This Document can not be used without Samsung's authorization.



This Document can not be used without Samsung's authorization



10-7-12 CORE MICOM & CONNECTORS

This Document can not be used without Samsung's authorization.

