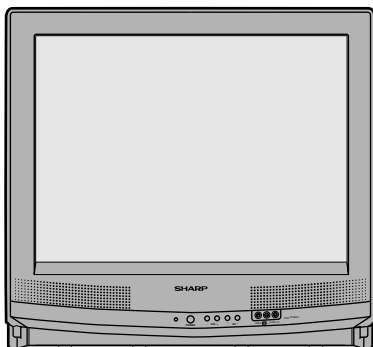


SHARP SERVICE MANUAL

S77B620J-S100



COLOR TELEVISION

Chassis No. SN-70

20J-S100/S100S

CJ20S10

MODELS

21MJ50

In the interests of user-safety (Required by safety regulations in some countries) the set should be restored to its original condition and only parts identical to those specified should be used.

ELECTRICAL SPECIFICATIONS

POWER INPUT 120 V AC 60 Hz
 POWER RATING 93W
 PICTURE SIZE 1240cm²(192sq inch)
 CONVERGENCE Magnetic
 SWEEP DEFLECTION Magnetic
 FOCUS Hi-Bi-Potential Electrostatic
 INTERMEDIATE FREQUENCIES
 Picture IF Carrier Frequency 45.75 MHz
 Sound IF Carrier Frequency 41.25 MHz
 Color Sub-Carrier Frequency 42.17 MHz
 (Nominal)

AUDIO POWER

OUTPUT RATING 1.3+1.3W (at 10% distortion & dual ch operate)

SPEAKER

SIZE 8cm(Round)

VOICE COIL IMPEDANCE 8ohm at 400 Hz

ANTENNA INPUT IMPEDANCE

VHF/UHF 75 ohm Unbalanced

TUNING RANGES

VHF-Channels 2thru 13

UHF-Channels 14thru 69

CATV Channels 1thru 125

USA: (EIA, Channel Plan)

Specifications are subject to change without prior notice.

CONTENTS

	Page
• ELECTRICAL SPECIFICATIONS	1
• IMPORTANT SERVICE SAFETY PRECAUTION	2
• LOCATION OF USER'S CONTROL	6
• INSTALLATION AND SERVICE INSTRUCTIONS	7
• CHASSIS LAYOUT	13
• BLOCK DIAGRAM	14
• SCHEMATIC DIAGRAMS	15
• PRINTED WIRING BOARD ASSEMBLIES	21
• REPLACEMENT PARTS LIST	29
• PACKING OF THE SET	37

SHARP ELECTRONICS CORPORATION

Service Headquarters: Sharp Plaza, Mahwah, New Jersey 07430-2135

SHARP ELECTRONICS OF CANADA LTD.

335 Britannia Road East Mississauga, Ontario L4Z 1W9 Canada

SHARP CORPORATION

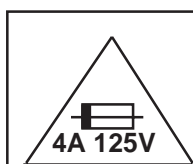
IMPORTANT SERVICE SAFETY PRECAUTION

- **Service work should be performed only by qualified service technicians who are thoroughly familiar with all safety checks and servicing guidelines which follow:**

WARNING

1. For continued safety, no modification of any circuit should be attempted.
2. Disconnect AC power before servicing.
3. Semiconductor heat sinks are potential shock hazards when the chassis is operating.
4. The chassis in this receiver has two ground systems which are separated by insulation material. The non-isolated (hot) ground system is for the B+ voltage regulator circuit and the horizontal output circuit. The isolated ground system is for the low B+ DC voltages and the secondary circuit of the high voltage transformer.

To prevent electrical shock use an isolation transformer between the line cord and power receptacle, when servicing this chassis.



CAUTION: FOR CONTINUED PROTECTION AGAINST A RISK OF FIRE, REPLACE ONLY WITH SAME TYPE 4A-125V FUSE.

SERVICING OF HIGH VOLTAGE SYSTEM AND PICTURE TUBE

When servicing the high voltage system, remove the static charge by connecting a 10k ohm resistor in series with an insulated wire (such as a test probe) between the picture tube ground and the anode lead. (AC line cord should be disconnected from AC outlet.)

1. Picture tube in this receiver employs integral implosion protection.
2. Replace with tube of the same type number for continued safety.
3. Do not lift picture tube by the neck.
4. Handle the picture tube only when wearing shatterproof goggles and after discharging the high voltage anode completely.

X-RADIATION AND HIGH VOLTAGE LIMITS

1. Be sure all service personnel are aware of the procedures and instructions covering X-radiation. The only potential source of X-ray in current solid state TV receivers is the picture tube. However, the picture tube does not emit measurable X-Ray radiation if the high voltage is as specified in the "High Voltage Check" instructions.
It is only when high voltage is excessive that X-radiation is capable of penetrating the shell of the picture tube including the lead in glass material. The important precaution is to keep the high voltage below the maximum level specified.
2. It is essential that service personnel have available at all times an accurate high voltage meter.
The calibration of this meter should be checked periodically.
3. High voltage should always be kept at the rated value –no higher. Operation at higher voltages may cause a failure of the picture tube or high voltage circuitry and; also under certain conditions, may produce radiation that exceeds specifications.
4. When the high voltage regulator is operating properly there is no possibility of an X-radiation problem. Every time a color chassis is serviced, the brightness should be tested while monitoring the high voltage with a meter to be certain that the high voltage does not exceed the specified value and that it is regulating correctly.
5. Do not use a picture tube other than that specified or make unrecommended circuit modifications to the high voltage circuitry.
6. When trouble shooting and taking test measurements on a receiver with excessive high voltage, avoid being unnecessarily close to the receiver.
Do not operate the receiver longer than is necessary to locate the cause of excessive voltage.

IMPORTANT SERVICE SAFETY PRECAUTION

(Continued)

BEFORE RETURNING RECEIVER

(Fire & Shock Hazard)

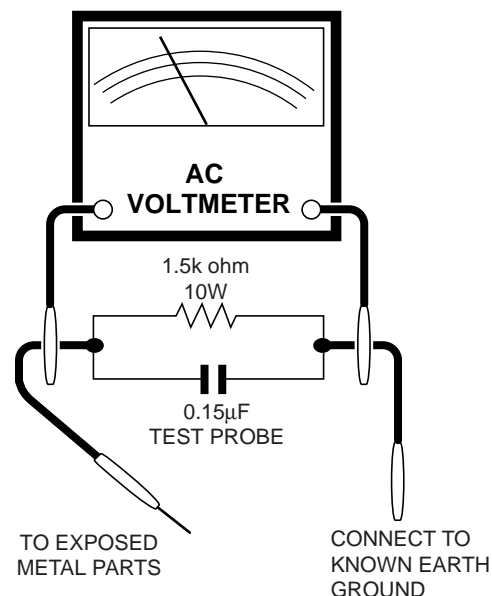
Before returning the receiver to the user, perform the following safety checks.

1. Inspect all lead dress to make certain that leads are not pinched or that hardware is not lodged between the chassis and other metal parts in the receiver.
2. Inspect all protective devices such as non-metallic control knobs, insulating materials, cabinet backs, adjustment and compartment covers or shields, isolation resistor-capacity networks, mechanical insulators, etc.
3. To be sure that no shock hazard exists, check for leakage current in the following manner.
 - Plug the AC cord directly into a 120 volt AC outlet, (Do not use an isolation transformer for this test).
 - Using to clip leads, connect a 1.5k ohm, 10 watt resistor paralleled by a 0.15 μ F capacitor in series with all exposed metal cabinet parts and a known earth ground, such as electrical conduit or electrical ground connected to earth ground.
 - Use an AC voltmeter having with 5000 ohm per volt, or higher, sensitivity to measure the AC voltage drop across the resistor.

- Connect the resistor connection to all exposed metal parts having a return to the chassis (antenna, metal cabinet, screw heads, knobs and control shafts, escutcheon, etc.) and measure the AC voltage drop across the resistor.

All check must be repeated with the AC line cord plug connection reversed. (IF necessary, a non-polarized adapter plug must be used only for the purpose of completing these check.)

Any current measured must not exceed 0.5 milliamp. Any measurements not within the limits outlined above are indicative of a potential shock hazard and corrective action must be taken before returning the instrument to the customer.



SAFETY NOTICE

Many electrical and mechanical parts in television receivers have special safety-related characteristics. These characteristics are often not evident from visual inspection, nor can protection afforded by them be necessarily increased by using replacement components rated for higher voltage, wattage, etc.

Replacement parts which have special safety characteristics are identified in this manual; electrical components having such features are identified by "⚠" and shaded areas in the Replacement Parts Lists and Schematic Diagrams.

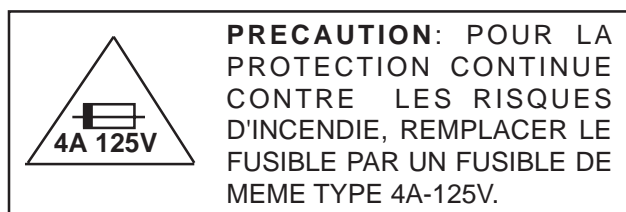
For continued protection, replacement parts must be identical to those used in the original circuit. The use of substitute replacement parts which do not have the same safety characteristics as the factory recommended replacement parts shown in this service manual, may create shock, fire, X-radiation or other hazards.

PRECAUTIONS A PRENDRE LORS DE LA REPARATION

- **Ne peut effectuer la réparation qu' un technicien spécialisé qui s'est parfaitement accoutumé à toute vérification de sécurité et aux conseils suivants.**

AVERTISSEMENT

1. N'entreprendre aucune modification de tout circuit. C'est dangereux.
2. Débrancher le récepteur avant toute réparation.
3. Les déversoirs thermiques à semi-conducteurs peuvent présenter un danger de choc électrique lorsque le récepteur est en marche.
4. Le châssis de ce récepteur possède deux systèmes de masse qui sont séparées par du matériel d'isolation. Le système de masse non-isolée (sous tension) est pour le circuit du régulateur de tension + B et le circuit de sortie horizontale. Le système de masse isolée est pour les tensions DC + B basses et le circuit secondaire du transformateur haute tension. Pour éviter tout risque d'électrocution lors de l'entretien de ce châssis, utiliser un transformateur d'isolation entre le cordon de ligne et la prise de courant.



REPARATION DU SYSTEME A HAUTE TENSION ET DU TUBE-IMAGE

Lors de la réparation de ce système, supprimer la charge statique en branchant une résistance de 10 k Ω en série avec un fil isolé (comme une sonde d'essai) entre la mise à la terre du tube-image et le fil d'anode. (Le cordon d'alimentation doit être retiré de la prise murale.)

1. Le tube image dans ce récepteur emploie une protection intégrée contre l'implosion.
2. Par mesure de sécurité, changer le tube-image pour un tube du même numéro de type.
3. Ne pas lever le tube-image par son col.
4. Ne manipuler le tube-image qu'en portant des lunettes incassables et qu'après avoir déchargé totalement la haute tension.

LIMITES DES RADIATIONS X ET DE LA HAUTE TENSION

1. Tout le personnel réparateur doit être instruit des instructions et procédés relatifs aux radiations X. Le tube-image, seule source de rayons X dans les téléviseurs transistorisés, n'émet pourtant pas de rayons mesurables si la haute tension est maintenue à un niveau préconisé dans la section "Vérification de la haute tension". C'est seulement quand la haute tension est excessive que les rayons X peuvent entrer dans l'enveloppe du tube-image y compris le conducteur de verre. Il est important de maintenir la haute tension en-dessous du niveau spécifié.
2. Il est essentiel que le réparateur ait sous la main un voltmètre à haute tension qui doit être périodiquement étalonné.
3. La haute tension doit toujours être maintenue à la valeur de régime -et pas plus haute. L'opération à des tensions plus élevées peut entraîner une panne du tube-image ou du circuit à haute tension et, dans certaines conditions, peut entraîner une radiation dépassant les niveaux prescrits.
4. Quand le régulateur à haute tension fonctionne correctement, il n'y a aucun problème de radiation X. Chaque fois qu'un châssis couleurs est réparé, la luminosité doit être examinée tout en contrôlant la haute tension à l'aide d'un voltmètre pour s'assurer que la haute tension ne dépasse pas la valeur spécifiée et qu'elle soit correctement réglée.
5. Ne pas utiliser un tube-image autre que celui spécifié et ne pas effectuer de modifications déconseillées du circuit à haute tension.
6. Lors de la recherche des pannes et des mesures d'essai sur un récepteur qui présente une haute tension excessive, éviter de s'approcher inutilement du récepteur.
Ne pas faire fonctionner le récepteur plus longtemps que nécessaire pour localiser la cause de la tension excessive.

PRECAUTIONS A PRENDRE LORS DE LA REPARATION

(Suite)

VERIFICATIONS CONTRE L'INCEN-DIE ET LE CHOC ELECTRIQUE

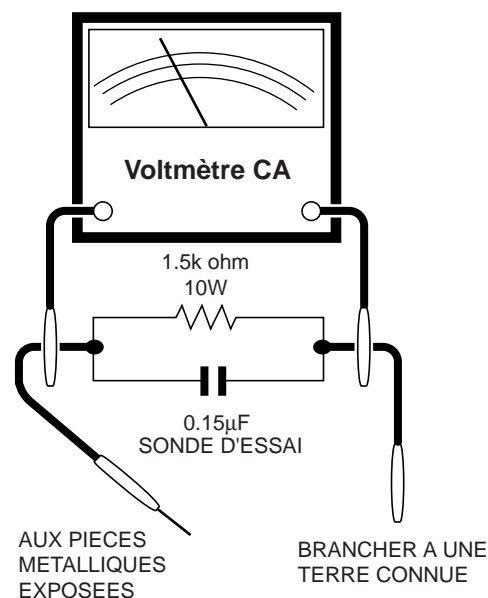
Avant de rendre le récepteur à l'utilisateur, effectuer les vérifications suivantes.

1. Inspecter tous les faisceaux de câbles pour s'assurer que les fils ne soient pas pincés ou qu'un outil ne soit pas placé entre le châssis et les autres pièces métalliques du récepteur.
2. Inspecter tous les dispositifs de protection comme les boutons de commande non-métalliques, les isolants, le dos du coffret, les couvercles ou blindages de réglage et de compartiment, les réseaux de résistance-capacité, les isolateurs mécaniques, etc.
3. S'assurer qu'il n'y ait pas de danger d'électrocution en vérifiant la fuite de courant, de la façon suivante:
 - Brancher le cordon d'alimentation directement à une prise de courant de 120V. (Ne pas utiliser de transformateur d'isolation pour cet essai).
 - A l'aide de deux fils à pinces, brancher une résistance de 1,5 k Ω 10 watts en parallèle avec un condensateur de 0,15 μ F en série avec toutes les pièces métalliques exposées du coffret et une terre connue comme une conduite électrique ou une prise de terre branchée à la terre.
 - Utiliser un voltmètre CA d'une sensibilité d'au moins 5000 Ω /V pour mesurer la chute de tension en travers de la résistance.

- Toucher avec la sonde d'essai les pièces métalliques exposées qui présentent une voie de retour au châssis (antenne, coffret métallique, tête des vis, arbres de commande et des boutons, écusson, etc.) et mesurer la chute de tension CA en-travers de la résistance. Toutes les vérifications doivent être refaites après avoir inversé la fiche du cordon d'alimentation. (Si nécessaire, une prise d'adaptation non polarisée peut être utilisée dans le but de terminer ces vérifications.)

Tous les courants mesurés ne doivent pas dépasser 0,5 mA.

Dans le cas contraire, il y a une possibilité de choc électrique qui doit être supprimée avant de rendre le récepteur au client.



AVIS POUR LA SECURITE

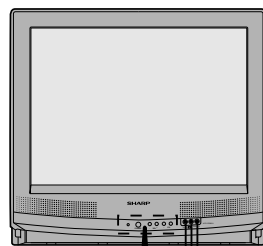
De nombreuses pièces, électriques et mécaniques, dans les téléviseurs présentent des caractéristiques spéciales relatives à la sécurité, qui ne sont souvent pas évidentes à vue. Le degré de protection ne peut pas être nécessairement augmentée en utilisant des pièces de remplacement étalonnées pour haute tension, puissance, etc.

Les pièces de remplacement qui présentent ces caractéristiques sont identifiées dans ce manuel; les pièces électriques qui présentent ces particularités sont

identifiées par la marque " \triangle " et hachurées dans la liste des pièces de remplacement et les diagrammes schématiques.

Pour assurer la protection, ces pièces doivent être identiques à celles utilisées dans le circuit d'origine. L'utilisation de pièces qui n'ont pas les mêmes caractéristiques que les pièces recommandées par l'usine, indiquées dans ce manuel, peut provoquer des électrocutions, incendies, radiations X ou autres accidents.

LOCATION OF USER'S CONTROL



VIDEO/AUDIO IN TERMINALS
(25J-S100: VIDEO/AUDIO terminals are also provided on the rear.)

(Model : 20J-S100)

SENSOR AREA FOR
REMOTE CONTROL

POWER

Press → ON.
Press again → OFF.

VOLUME UP/DOWN
(+) Increases sound.
(-) Decreases sound.

CHANNEL UP/DOWN
(8) Selects next higher channel.
(9) Selects next lower channel.

POWER

Press n On.
Press again n Off.

FLASHBACK

Returns to previously viewed
channel.

VOLUME UP/DOWN

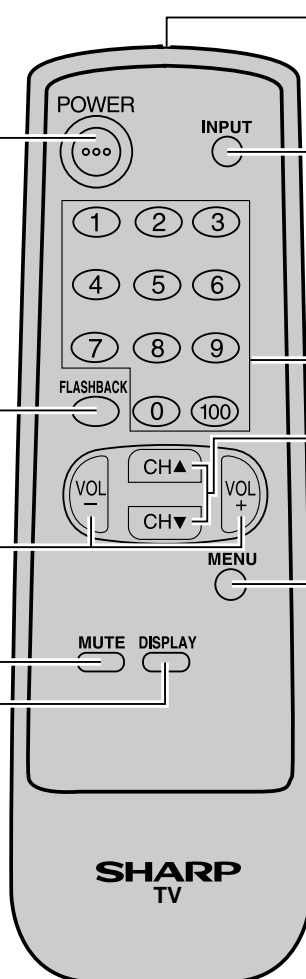
(+) Increases sound.
(-) Decreases sound.
• In menu mode, changes or
selects the TV adjustments.

MUTE

Press n Mutes sound.
Press again n Restores sound.
• CLOSED CAPTION appears
when sound is muted.

DISPLAY

Press n Displays receiving
channel for 4 seconds.
Press again n Removes display.
• Temporarily displays receiving
channel when in Closed Caption
mode.



Infrared Transmitter Window

INPUT

(20J-S100)
Press n Switch to external video
input mode.
Press again n Switch to TV mode.

Direct Access

Accesses any channel by the
keypad.

CHANNEL UP/DOWN

(8) Selects next higher channel.
(9) Selects next lower channel.
• See pages 15, 16 for channel
presetting.
• Moves the "◆" mark of the
MENU screen.

MENU

Press n Accesses MAIN MENU.
Press again n Exits MAIN MENU.

INSTALLATION AND SERVICE INSTRUCTIONS

- Note:** (1) When performing any adjustments to resistor controls and transformers use non-metallic screwdriver or TV alignment tools.
- (2) Before performing adjustment, TV set must be on at least 15 minutes.

CIRCUIT PROTECTION

The receiver is protected by a 4.0A fuse (F701), mounted on PWB-A, wired into one side of the AC line input.

X-RADIATION PROTECTOR CIRCUIT TEST

1. After service has been performed on the horizontal deflection system, high voltage system, B + system, test the X-Radiation protection circuit to ascertain proper operation as follows:

- 1) Apply 120V AC using a variac transformer for accurate input voltage.
- 2) Allow for warm up and adjust all customer controls for normal picture and sound.
- 3) Select a local channel.
- 4) Connect a digital voltmeter to TP653 and make sure that the voltmeter reads $21.5 \pm 1.5V$.
- 5) Apply external 26.8V DC at TP653 by using an external DC supply, TV must be shut off.
- 6) To reset the protector, unplug the AC cord and make a short circuit between TP651 and TP652. Now make sure that normal picture appears on the screen.
- 7) If the operation of the horizontal oscillator does not stop in step 5, the circuit must be repaired before the set is returned to the customer.

HIGH VOLTAGE CHECK

High voltage is not adjustable but must be checked to verify that the receiver is operating within safe and efficient design limitations as specified checks should be as follows:

1. Connect an accurate high voltage meter between ground and anode of picture tube.
2. Operate receiver for at least 15 minutes at 120V AC line voltage, with strong air signal or properly tuned in test signal.
3. Set service mode on (See next page.), Service No.S19 and Bus data "01" (Y-mute on).
4. The voltage should be approximately 26.5kV (at zero beam).

If a correct reading cannot be obtained, check circuitry for malfunctioning components. After the voltage test, make Y-mute off (normal mode).

For adjustments of this model, the bus data is converted to various analog signals by the D-A converter circuit.
Note: There are still a few analog adjustments in this series such as focus and master screen voltage.

Follow the steps below whenever service adjustment is required. See Figure "B" to determine if service adjustments are required.

1. Service mode -

Before putting unit into the service mode, check, that customer adjustments are in the normal mode. use the reset function in the video adjust menu to ensure customer controls are in their

2. Service number selection

Once in the service mode, press the channel up or channel down button on the remote transmitter or at the set. the service adjustment number will vary in increments of one, from "S01" to M05.

Select the item you wish to adjust.

3. Data number selection

Press the volume up or down button to adjust the data number.

To enter the service mode .

While Pressing the Vol-up and Ch- up buttons at once, plug the AC cord into a wall socket. Now the TV set is switched on and enters the service mode.

To exit the service mode, shut the television off by pressing the power button.

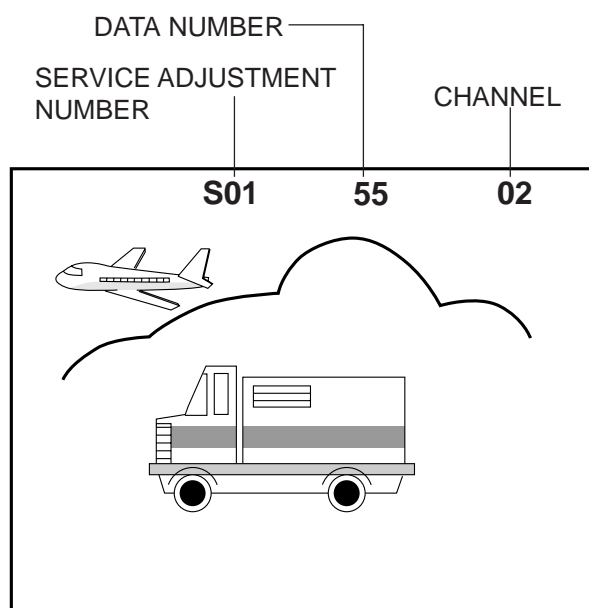


Figure B.

Vertical-size adjustment

1. Have unit receive a good local channel.
2. Enter the service mode and select service adjustment "S09".
3. While observing the top and bottom of the screen, adjust "S09" data value to proper vertical size .

Vertical phase adjustment

1. Enter the service mode and select service adjustment "S06".
2. Adjust data value to "00"~"03" so that picture is approximate center.

Note: This must be set "00"~"03" when adjust another data retrace line will be appear.

"Horizontal position adjustment

1. Have unit receive a good local channel.
2. Enter the service mode and select service adjustment "S07".
3. Adjust "S07" data value so that picture is centered.

SERVICE NUMBER	ADJUSTMENT ITEM	DATA		ADJUSTMENT CONTENTS
		INITIAL VALUE	RANGE	
S01	PICTURE	55	00-7F	Must be set to "24"
S02	TINT	46	00-7F	
S03	COLOR	32	00-7F	
S04	BRIGHTNESS	40	00-7F	
S05	SHARPNESS	28	00-3F	
S06	VERTICAL PHASE	00	00-07	
S07	HORIZONTAL PHASE	12	00-1F	
S08	RF-AGC	2A	00-3F	
S09	VERTICAL AMP	20	00-3F	
S10	VCO	2C	00-7F	
S11	R CUT-OFF	00	00-FF	
S12	G CUT -OFF	00	00-FF	
S13	B CUT-OFF	00	00-FF	
S14	G GAIN	7F	00-FF	
S15	B GAIN	7F	00-FF	
S16	TRAP(3.58MHz)	00	00 or 01	Must be set to "00"
S17	BALANCE	20	00-3F	Must be set to "20"
S18	C.C.POSITION	18	00-7F	00=NORMAL, 01=no "Y, 03=NO VERTICAL"
S19	Y-MUTE	00	00,01,03	
OP	OPTION (Set to each mode)		00-7E	
M01	MTS LEVEL	0A	00-FF	
M02	STEREO-VCO	20	00-3F	
M03	FILTER	1C	00-3F	Must be set to "9"
M04	LOW SEPARATION	20	00-3F	
M05	HIGH SEPARATION	1B	00-3F	

Table - A

Holding down both the CH UP/DOWN keys on the TV set at service mode for more then 2 seconds will automatically write the above initial values into IC2101.

PART REPLACED	ADJUSTMENT		NOTES
	NECESSARY	UNNECESSARY	
IC2001		X	Data is stored in IC2101.
IC201	X		The adjustment is needed to compensate for characteristics of parts including IC201.
IC2101	X		Holding down both the CH UP/DOWN keys on the TV set at service mode for more than 2 seconds will automatically write the above initial values into IC2101.
CRT	X		Adjust items related to picture tube only.
IC3001	X		Adjust items related to MTS only (M01~M05).

Table - B

■ adjustment

VCO Adjustment

1. Connect a digital voltmeter between pin (44) of IC201 and ground.
2. Select a good local channel.
3. Enter the service mode. select adjustment "S10".
4. Adjust the data so that digital voltmeter should read 2.2V
5. Adjustment is complete, remove the volt-meter, return to "normal" mode.

RF AGC Adjustment

1. Have unit receive a good local channel.
2. Enter the service mode and select service adjustment "S08".
3. Set the data value to point where no noise or beat appears.
4. Select another channel to confirm that no noise or beat appears.

NOTE 1: You will have to come out of the service mode to select another channel.

NOTE 2: Setting the data to "00" will produce a black raster.

Screen adjustment

1. Connect a digital voltmeter between TP852 and TP853 on the CRT socket PWB.

Note: These test points may not be provided.

Then connect the voltmeter to both ends of R852 located near Q852 on the foil side.

2. Select a good local channel.
3. Enter the service mode and select service adjustment "S03" and set the data value to "00" to set the color level to minimum. (Record original data code under adjustment "S03" before changing) You may skip this step if you selected a B/W picture or monoscope pattern.
4. Select service adjustment "S19" and adjust the data value to "01" this turn off the luminance signal (Y-mute).
5. Select service adjustment "S04" and adjust data value to obtain 0.17 volts on the digital voltmeter.
6. Adjust the master screen control until raster darkens to the point where raster is barely seen.
7. Adjust service adjustments "S11" red, "S12" green and "S13" blue to obtain a good grey scale with normal whites at low brightness level.
8. Select service adjustment "S19" and reset data to "00".
Select service adjustment "S03" and reset data to obtain normal color level.
9. Remove digital voltmeter.
Reset master screen control to obtain normal brightness range.

White balance adjustment

1. Have unit receive a good local channel.
2. Enter the service mode. select service adjustment "S03" and set to "00" (minimum color). "S03" does not have to be adjusted if you selected a B/W picture or monoscope pattern.
3. Alternately adjust service adjustment data of "S14" and "S15" until a good grey scale with normal whites is obtained.
4. Select service adjustment "S03" and adjust data to obtain normal color level.

Sub-picture adjustment

1. Have unit receive a good local channel.
2. Make sure the customer picture control is set to maximum.
3. Enter the service mode and select service adjustment "S01".
4. Adjust the data value to achieve normal contrast range.

Sub-Tint Adjustment

1. Have unit receive a good local channel.
2. Set customer tint control to center of it's range.
3. Enter the service mode and select service adjustment "S02".
4. Adjust "S02" data value to obtain normal flesh tones.

Sub-color adjustment

1. Have unit receive a good local channel.
2. Make sure the customer color control is set to center position .
3. Enter the service mode and select service adjustment "S03".
4. Adjust "S03" data value to obtain normal color level.

Sub-brightness adjustment

1. Have unit receive a good local channel.
2. Make sure the customer brightness control is set to center position.
3. Enter the service mode and select service adjustment "S04".
4. Adjust "S04" data value to obtain normal brightness level.

Caption position adjustment (horizontal)

1. Have unit receive a good local channel.
2. Enter the service mode and select service adjustment "S18".
3. A black text box appears on the screen (see Figure C) .
4. Adjust "S18" data value so that text box is positioned in the center of the screen.

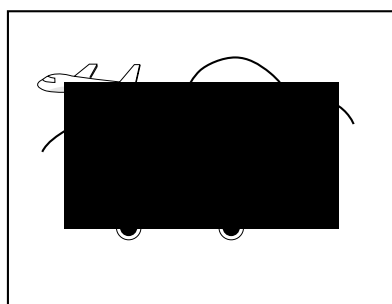


Figure C.

3.58MHz trap adjustment

1. Have unit receive a good local channel.
2. Enter the service mode and select service adjustment "S16" .
3. This is a two position adjustment, "00" is ON , "01" is OFF.
4. Adjust data value to "00" for normal viewing.

Sharpness and Audio balance adjustments

1. Have unit receive a good local channel.
2. Enter the service mode and select "S05" for sharpness and "S17" for balance.
 - Sharpness adjustments
3. Adjust data value to "24" (center of data range) for sharpness adjustment.
- Audio balance adjustments
4. Adjust data value to "20" (center of data range) for Audio balance adjustment.
5. Receive the following composite stereo signal2.
Stereo signal :30% modulation , left channel only, noise reduction on, 3kHz.
6. Enter the service mode and select the service adjustment "M05".
7. Adjust the data until the AC voltage reading of the rms voltmeter is minimum.
8. Take the above steps 1 thru 8 again for fine adjustment.

MTS level adjustment

1. Feed the following monaural signal to pin (14) of IC3001.
Monaural signal: 300Hz,245mVrms
2. Connect the rms voltmeter to pin (39) of IC3001.
3. Enter the service mode and select the service adjustment "M01".
4. Adjust the data so that the rms voltmeter should take the reading below. Spec:490 \pm 10mVrms.

Stereo VCO adjustment

1. Keep the unit in no-signal state.
2. Connect the frequency counter to pin (39) of IC3001.
3. Connect a capacitor (100 μ F, 50V) in between positive (+) side of C3005 and ground.
4. Enter the service mode and select the service adjustment "M02".
5. Adjust the data so that frequency counter should take the reading below.Spec:62.94 \pm 0.75kHz

Filter adjustment

1. Feed the following stereo pilot signal to pin (14) of IC3001.Stereo pilot signal:9.4kHz,600mVrms.
2. Enter the service mode and select the service adjustment "M03".
3. Adjust the data at the point where "OK" appears on the screen. The "OK" represents the approximate center of the adjustable range of the data.

Separation Adjustment

1. Connect the rms voltmeter to pin (39) of IC3001.
2. Receive the following composite stereo signal 1.
Composite stereo signal: 30% modulation, left channel only, noise reduction on, 300Hz.
3. Enter the service mode and select the service adjustment "M04".
4. Adjust the data until the AC voltage reading of the rms voltmeter is minimum.

DESCRIPTION OF SCHEMATIC DIAGRAM

NOTE:

1. The unit of resistance "ohm" is omitted (K:1000 ohms, M:1 Meg ohm).
2. All resistors are 1/8 watt, unless otherwise noted.
3. All capacitors are μF , unless otherwise noted P: $\mu\mu F$.
4. (G) indicates $\pm 2\%$ tolerance may be used.
5. \perp indicates line isolated ground.
6. ∇ indicates hot ground.

VOLTAGE MEASUREMENT CONDITIONS:

1. All DC voltages are measured with DVM connected between points indicated and chassis ground, line voltage set at 120V AC and all controls set for normal picture unless otherwise indicated.
2. All voltages measured with 1000 μV B & W or Color signal.

WAVEFORM MEASUREMENT CONDITIONS:

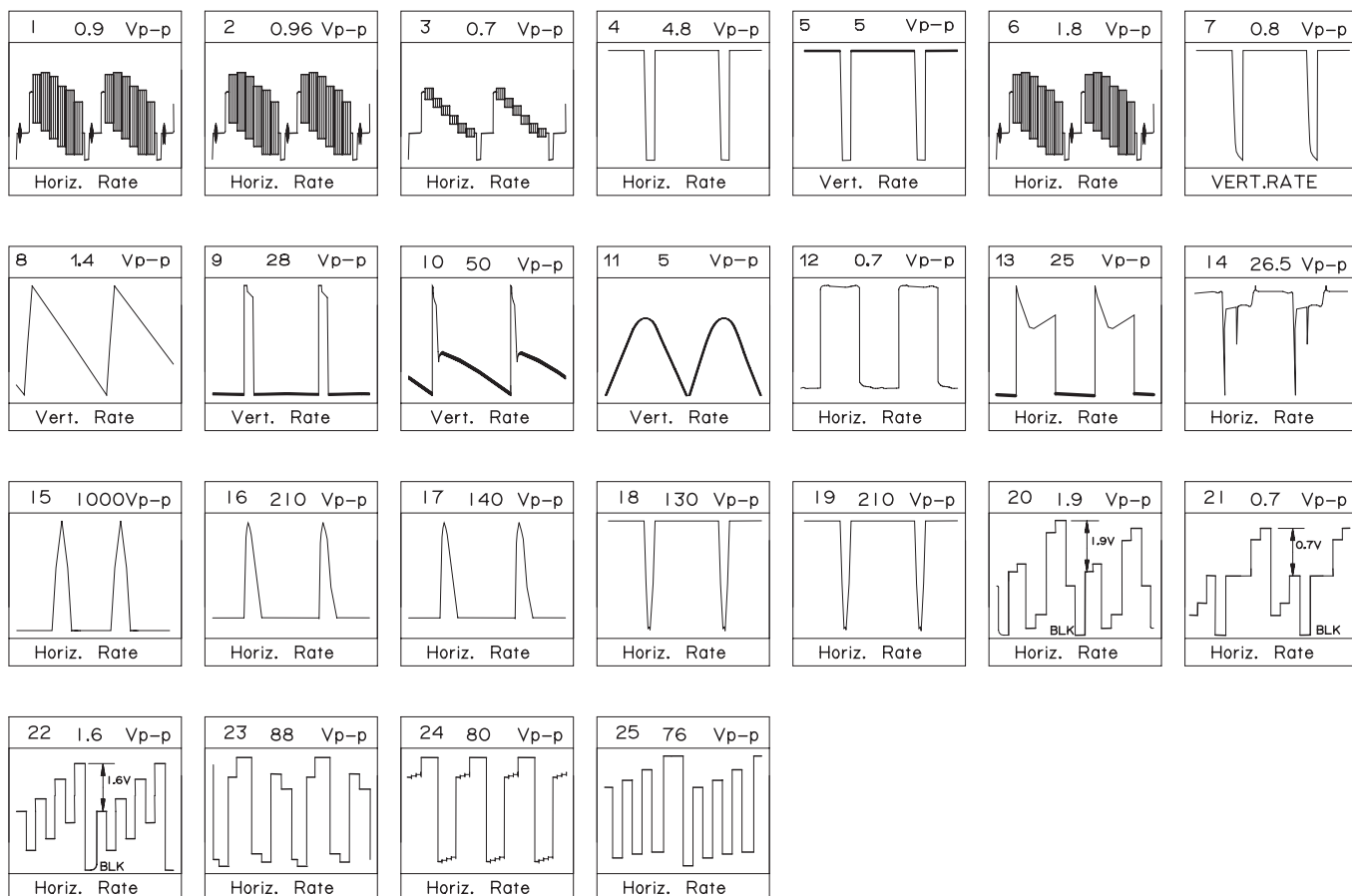
1. Photographs taken on a standard gated color bar signal, the tint setting adjusted for proper color. The wave shapes at the red, green and blue cathodes of the picture tube depend on the tint, color level and picture control.
2. \bigcirc indicates waveform check points (See chart, waveforms are measured from point indicated to chassis ground.)

\triangle AND SHADED () COMPONENTS
= SAFETY RELATED PARTS.
 \blacktriangle MARK= X-RAY RELATED PARTS.

DRGANNES MARQUES \triangle ET HACHRES ():
PIECES RELATIVES A LA SECURITE.
MARQUE \blacktriangle : PIECS RELATIVE AUX RAYONS X.

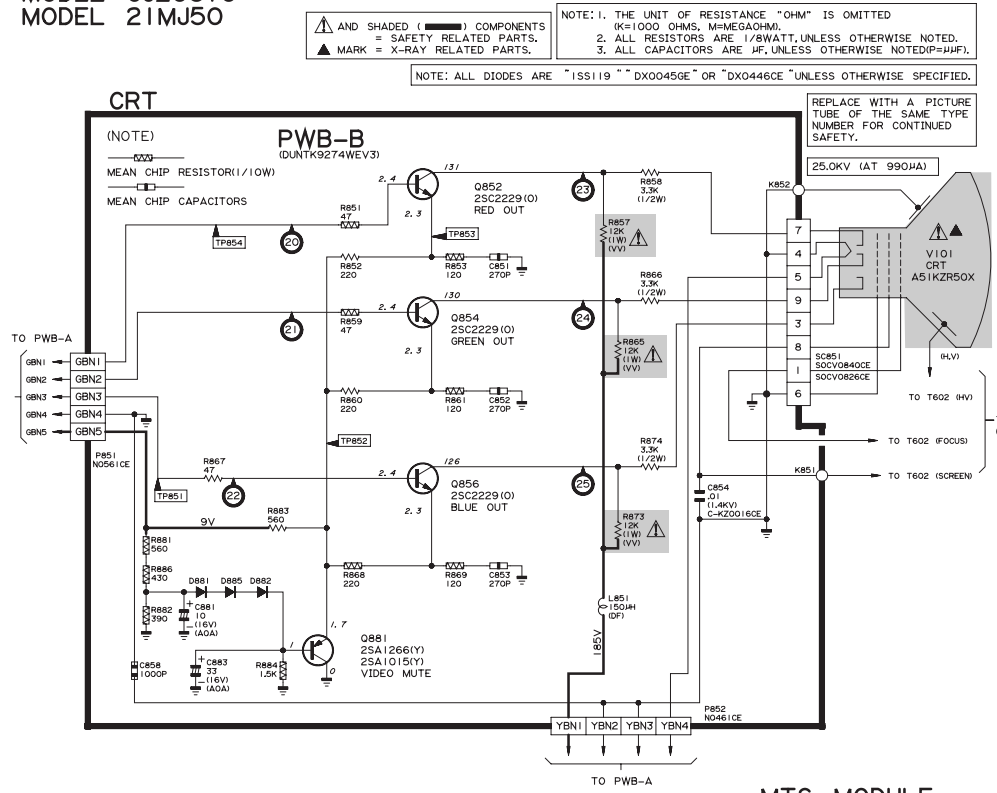
This circuit diagram is a standard one, printed circuits may be subject to change for product improvement without prior notice.

WAVE FORMS

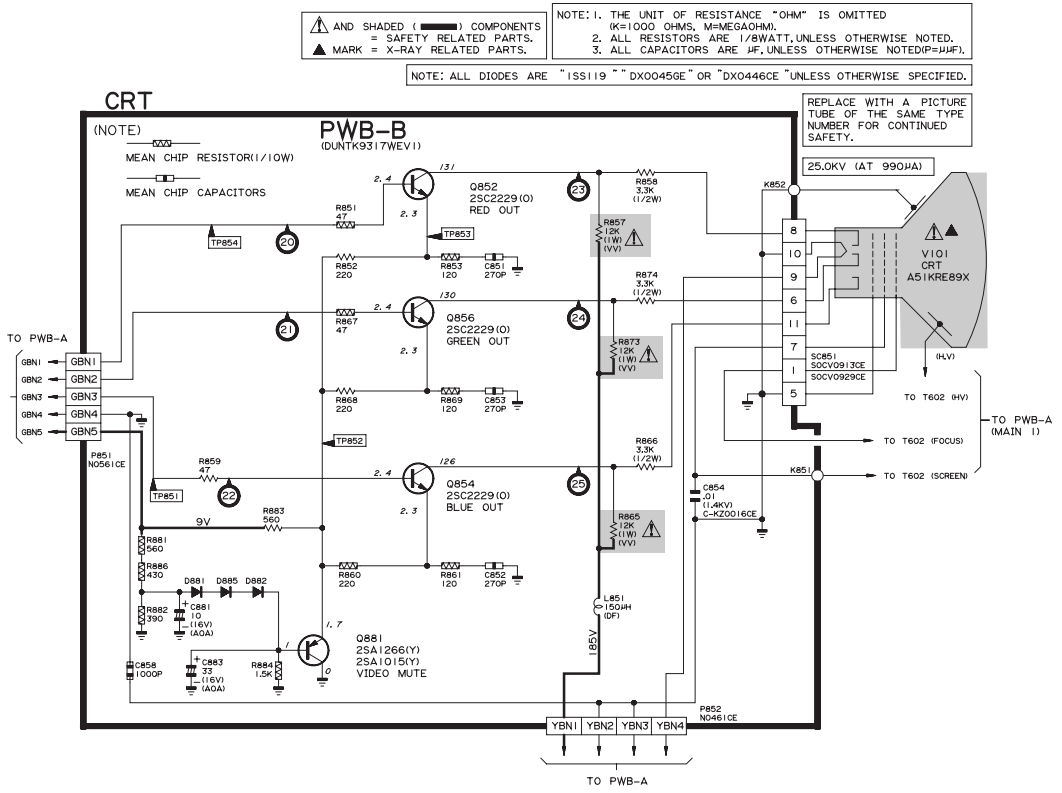


SCHEMATIC DIAGRAM :CRT Unit

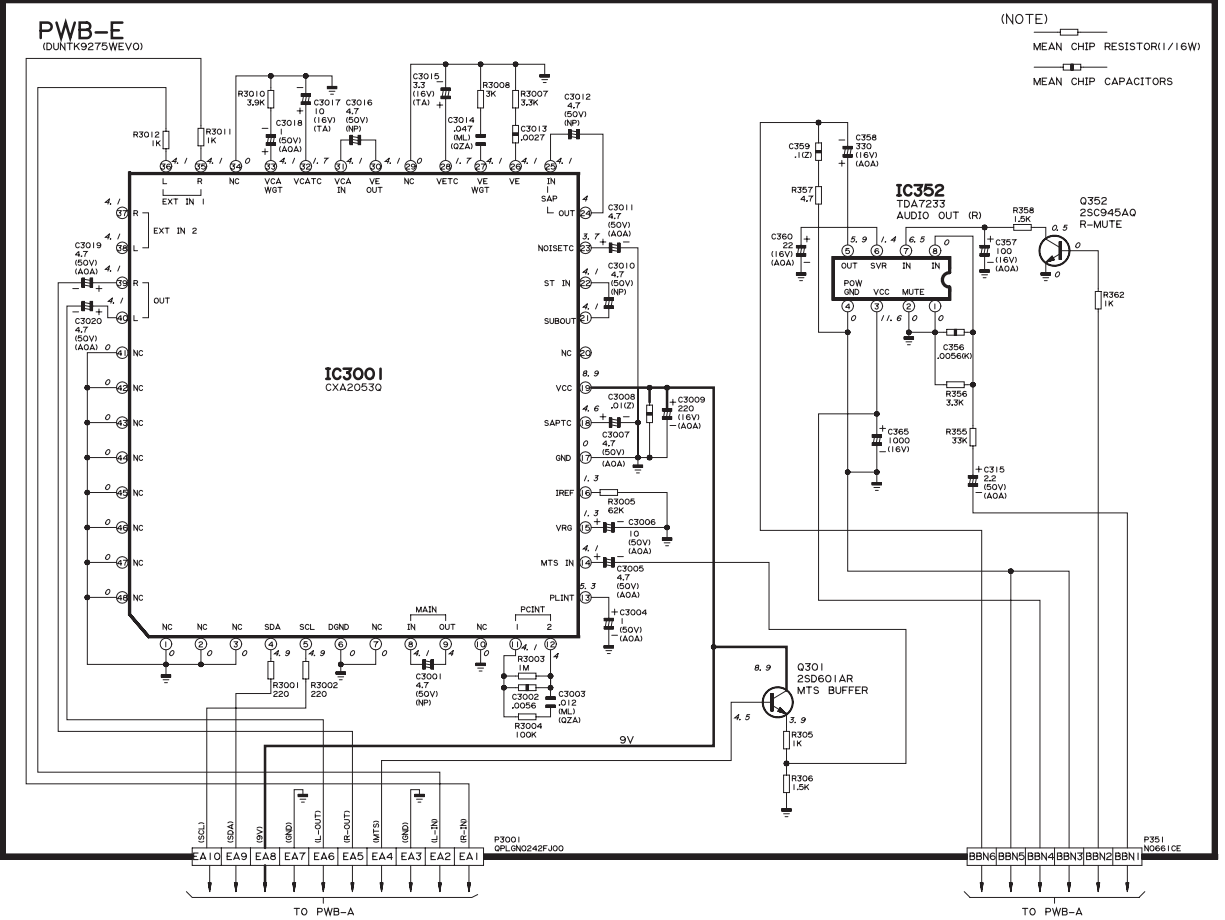
MODEL 20J-S100
MODEL CJ20S10
MODEL 21MJ50



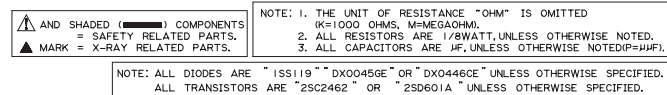
MODEL 20J-S100S



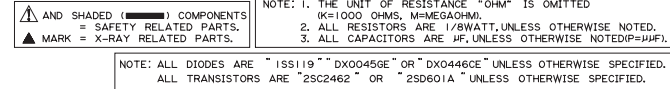
MTS MODULE



MODEL 20J-S100
MODEL 21MJ50
MODEL CJ20S10



MODEL 20J-S100S



PRINTED WIRING BOARD ASSEMBLIES: 20J-S100, 21MJ50, CJ20S10

H
G
F
E
D
C
B
A

1 2 3 4 5 6 7 8 9 10 11 12

PWB-A:MAIN Unit (Wiring Side)

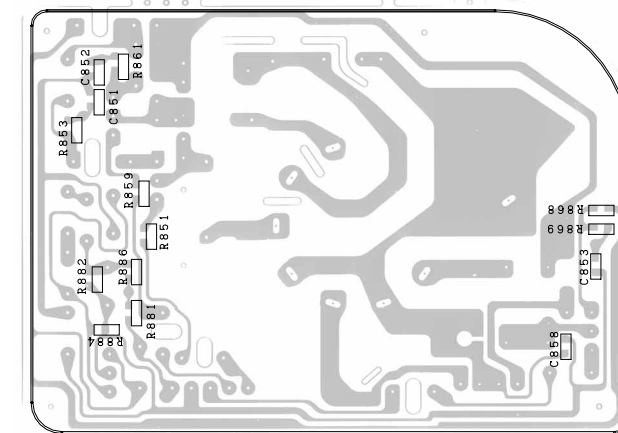
PWB-B:CRT Unit (Wiring Side)

PWB-E:MTS Unit (Wiring Side)

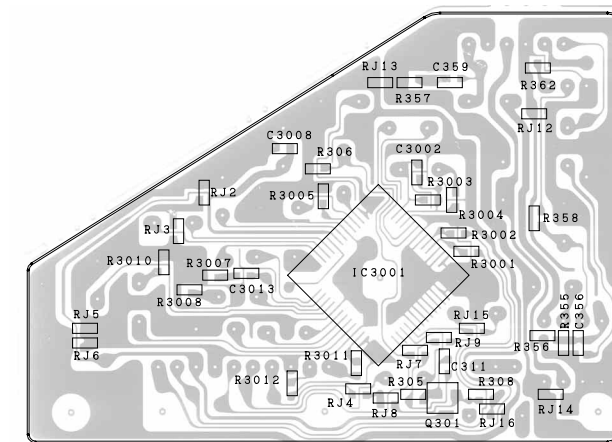
PWB-E:MTS Unit (Wiring Side)



PWB-A:MAIN Unit (Chip Parts Side)



PWB-B:CRT Unit (Chip Parts Side)



PWB-E:MTS Unit (Chip Parts Side)

PRINTED WIRING BOARD ASSEMBLIES: 20J-S100S

H
G
F
E
D
C
B
A

PWB-A:MAIN Unit (Wiring Side)

12
11
10
9
8
7
6
5
4
3
2
1

H
G
F
E
D
C
B
A

PWB-B:CRT Unit (Wiring Side)

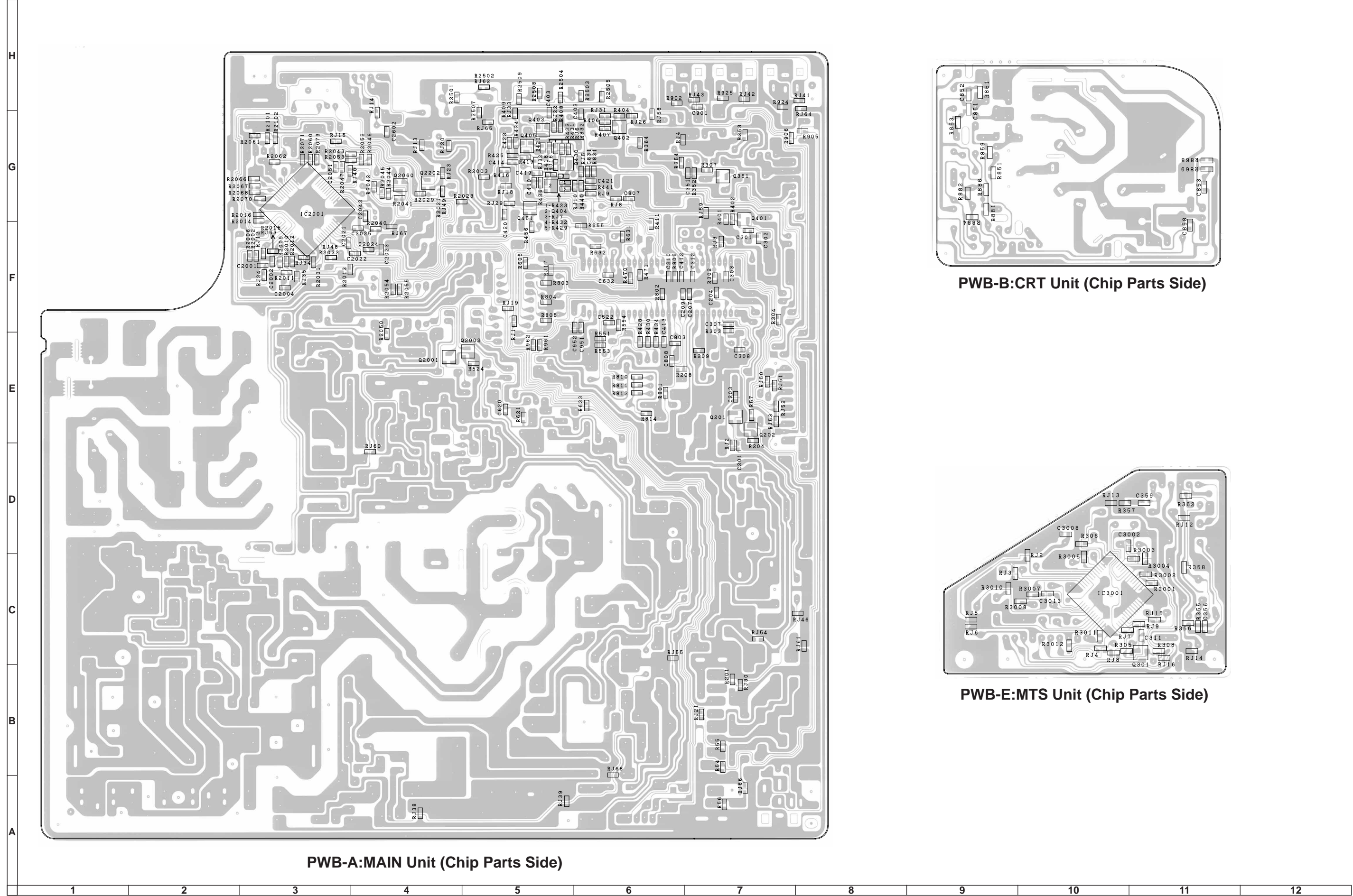
12
11
10
9
8
7
6
5
4
3
2
1

H
G
F
E
D
C
B
A

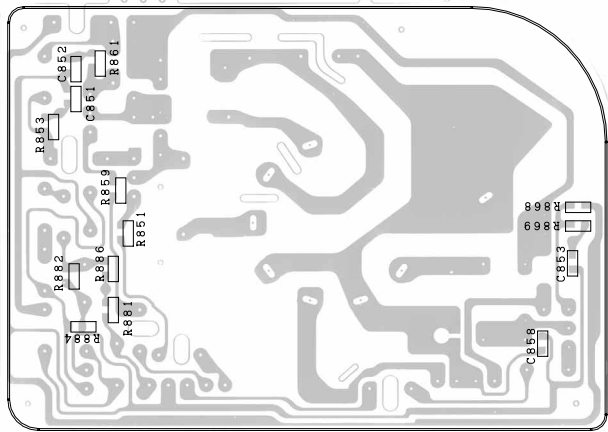
PWB-E:MTS Unit (Wiring Side)

12
11
10
9
8
7
6
5
4
3
2
1

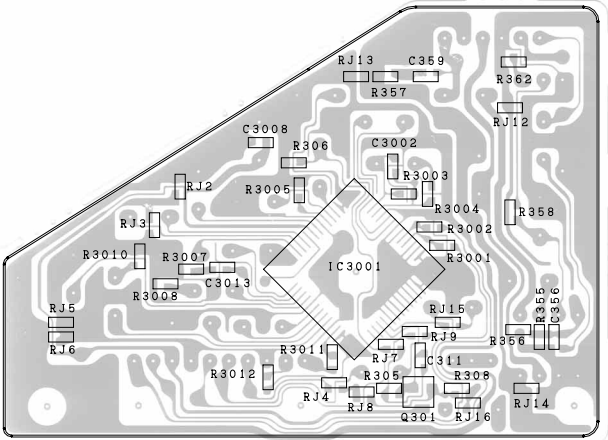
PWB-E:MTS Unit (Wiring Side)



PWB-A:MAIN Unit (Chip Parts Side)




PWB-B: CRT Unit (Chip Parts Side)



PWB-E: MTS Unit (Chip Parts Side)

PARTS LIST

PARTS REPLACEMENT

Replacement parts which have these special safety characteristics identified in this manual ; electrical components having such features are identified by  and shaded areas in the Replacement Parts Lists and Schematic Diagrams. The use of a substitute replacement part which dose no have the same safety characteristic as the factory recommended replacement parts shown in this service manual may create shock, fire or other hazards.

"HOW TO ORDER REPLACEMENT PARTS"

To have your order filled promptly and correctly, please furnish the following informations.

	1. MODEL NUMBER	2. REF. NO.
	3. PART NO.	4. DESCRIPTION
in USA:	Contact your nearest SHARP Parts Distributor to order. For location of SHARP Parts Distributor, Please call Toll-Free; 1-800-BE-SHARP	
<hr/>		
MARK★: SPARE PARTS-DELIVERY SECTION		

MARK▲ : X- RAY RELATED PARTS

Ref. No.	Part No.	★	Description	Code
----------	----------	---	-------------	------

PICTURE TUBE

20J-S100/CJ20S10/21MJ50

▲▲	V101	VB51KZR50X/*S	M	CRT	CC
▲▲	DY601	RCiLH0105MEZZ	M	DY	AY
▲	L702	RCiLG0017MEZZ	M	Degaussing Coil	AM
		MSPRT0002MEZZ	M	Spring for CRT	AA
		QEARC2002MEZZ	M	Grounding Strap	AF
		PMAGF3003MEZZ	M	Magnet A'ssy	—
		PSPAG0012MEZZ	M	Wedge	AA

20J-S100S


▲▲	V101	VB51KZE89X/1E	M	CRT	—
▲▲	DY601	RCiLH0107MEZZ	M	DY	AZ
▲	L702	RCiLG0017MEZZ	M	Degaussing Coil	AM
		MSPRT0002MEZZ	M	Spring for CRT	AA
		QEARC2002MEZZ	M	Grounding Strap	AF
		PMAGF3001MEZZ	M	Magnet A'ssy	AG
		PSPAG0012MEZZ	M	Wedge	AA

PRINTED WIRING BOARDASSEMBLYS (NOT REPLACEMENT ITEM)

PWB-A	DUNTK9273WEV3	-	Main Unit (20J-S100)	—
PWB-A	DUNTK9273WEV6	-	Main Unit (CJ20S10)	—
PWB-A	DUNTK9273WEV9	-	Main Unit (21MJ50)	—
PWB-A	DUNTK9316WEV1	-	Main Unit (20J-S100S)	—
PWB-B	DUNTK9274WEV3	-	CRT Unit (20J-S100/ CJ20S10/21MJ50)	—
PWB-B	DUNTK9317WEV1	-	CRT Unit (20J-S100S)	—
PWB-E	DUNTK9275WEV5	-	MTS Unit	—

LISTE DES PIECES

CHANGE DES PIECES

Les pi`eces de rechange qui pr`e`esentent ces caract`eristiques sp`eciales de s`e`curit`e, sont identifi`ees dans ce manuel : les pi`eces `e`lectriques qui pr`esentent ces particularit`es, sont rep`eler`ee par la marque  et sont hachur`ees dans les listes de pi`eces et dans les diagrammes sch`ematiques. La substitution d'une pi`ece de rechange par une autre qui ne pr`e`esente pas les m`e`mes caract`eristiques de s`e`curit`e que la pi`ece recommand`ee parl'usine et dans ce manuel de service, peut provoquer une `e`lectrocution, un incendie ou toutautre sinistre.

"COMMENT COMMANDER LES PIECES DE RECHANGE"

Pour que votre commande soit rapidement et correctement remplie, veuillez fournir les renseignements suivants.

	1. NUMERO DU MODELE	2. NO. DE REF
	3. NO. DE PIECE	4. DESCRIPTION
in CANADE:	Contact SHARP Electronics of Conada Limited Phone (416) 890-2100	
<hr/>		
★MARQUE: SECTION LIVRAISON DES PIECES DE RECHANGE		

▲ MARQUE : PIECES RELATIVE AUX RAYONS X

Ref. No.	Part No.	★	Description	Code
----------	----------	---	-------------	------

DUNTK9273WEV3/V6/V9 DUNTK9316WEV1 MAIN UNIT

TUNER

NOTE: THE PARTS HERES SHOWN ARE SUPPLIES AS AN ASSEMBLY INDEPENDETLY.

▲	TU51	VTUVTST6UF78/	J	Tuner	BD
---	------	---------------	---	-------	----

INTEGRATED CIRCUITS

	IC101	VHiKA78S05P-1	J	KiA78S05P	AD
▲▲	IC201	RH-iX2701CEN1	J	TA1201CN (20J-S100/100S/CJ20S10)	AY
▲▲	IC201	RH-iX2573CEZZ	J	I. C.(21MJ50)	BA
	IC351	VHiTDA7233/-1	J	TDA7233	AF
	IC501	VHiTA8403K/-1	J	TA8403k	AL
	IC701	VHiSTR301301E	J	I.C.	AP
▲	IC751	VHiKA7809Pi-1	R	KiA7809Pi	AE
		or VHiTA7809S/-1			
	IC2001	RH-iX2946CEZZ	J	TMPA8701CKF108	AX
	IC2040	VHiPST994C/-1	J	PST994C	AD
	IC2101	RH-iX2447CEN1	J	ST24C01B6	AL
		or RH-iX2448CEN1			

TRANSISTORS

You can substitute "VS2SD601AR/-1" for "VS2SC2462-C-1".

Q201	VS2SC2735//1E	J	2SC2735	AC
Q351	VS2SD601AR/-1	J	2SD601(AR)	AC
Q401	VS2SD601AR/-1	J	2SD601(AR)	AC
Q402	VS2SB709AR/-1	J	2SB709(AR)	AC
Q403	VS2SD601AR/-1	J	2SD601(AR)	AC
Q404	VS2SB709AR/-1	J	2SB709(AR)	AC
Q451	VS2SB709AR/-1	J	2SB709(AR)	AC
Q601	VS2SC2655Y/-1	J	2SC2655(Y)	AE

Ref. No.	Part No.	★	Description	Code
----------	----------	---	-------------	------

DUNTK9273WEV3/V6/V9 DUNTK9316WEV1 MAIN UNIT

▲	Q602	VS2SD2095//1E	J	2SD2095	AN
	or	VS2SD1555//1E			AP
	or	VS2SD2499//1E			—
	or	VS2SD2586//1E			AM
	Q603	VS2SC945AQ/-1	J	2SC945(AQ)	AB
	or	VS2SC1815YW-1			
	or	VS2SC3198-Y-1			
	Q730	VS2SD667D//-1	J	2SD667(D)	AE
▲	Q751	VS2SD667D//-1	J	2SD667(D)	AE
	or	VS2SC1983//-2			
	Q752	VS2SC945AQ/-1	J	2SC945(AQ)	AB
	or	VS2SC1815YW-1			
	or	VS2SC3198-Y-1			
	Q753	VS2SA1013//1E	J	2SA1013	AD
	Q2001	VS2SD601AR/-1	J	2SD601(AR)	AC
	Q2002	VS2SD601AR/-1	J	2SD601(AR)	AC
	Q2060	VS2SD601AR/-1	J	2SD601(AR)	AC

DIODES

You can substitute "VHD1SS119//-1" for "RH-DX0446CEZZ".

	D51	RH-EX0611GEZZ	J	Zener Diode	AA
	D52	RH-EX0701GEZZ	J	Zener Diode	AB
	D53	RH-EX0611GEZZ	J	Zener Diode	AA
	D103	VHD1SS119//-1	J	Diode	AB
	D401	VHD1SS119//-1	J	Diode	AB
	D402	RH-EX0092CEZZ	J	Zener Diode	AB
	D454	RH-EX0103CEZZ	J	Zener Diode	AB
	D455	VHD1SS119//-1	J	Diode	AB
	D501	RH-DX0441CEZZ	J	Diode	AC
	or	RH-DX0110CEZZ	J		AB
△	D502	RH-DX0131CEZZ	J	Diode	AC
	D601	RH-DX0441CEZZ	J	Diode	AC
	or	RH-DX0110CEZZ	J		AB
	D603	RH-DX0441CEZZ	J	Diode	AC
	or	RH-DX0110CEZZ	J		AB
	D604	VHD1SS119//1E	J	Diode	AA
	or	RH-DX0441CEZZ	J		AC
	or	RH-DX0110CEZZ	J		AB
	D605	VHD1SS119//1E	J	Diode	AA
	or	RH-DX0441CEZZ	J		AC
	or	RH-DX0110CEZZ	J		AB
	D631	RH-EX0630GEZZ	J	Zener Diode	AA
	D641	RH-EX0631GEZZ	J	Zener Diode	AA
▲△	D651	RH-DX0131CEZZ	J	Diode	AC
▲△	D652	VHD1SS119//-1	J	Diode	AB
▲△	D653	RH-EX0091CEZZ	J	Zener Diode	AB
△	D661	RH-DX0444CEZZ	J	Diode	AH
△	D701	RH-DX0154CEZZ	J	Diode	AC
△	D702	RH-DX0154CEZZ	J	Diode	AC
△	D703	RH-DX0154CEZZ	J	Diode	AC
△	D704	RH-DX0154CEZZ	J	Diode	AC
	D730	RH-EX0317CEZZ	J	Zener Diode	AA
△	D751	RH-DX0417CEZZ	J	Diode	AE
	or	RH-DX0200CEZZ	J		

Ref. No.	Part No.	★	Description	Code
----------	----------	---	-------------	------

D752	RH-EX0019TAZZ	J	Zener Diode	AB
D757	VHD1SS119//-1	J	Diode	AB
D758	RH-DX0131CEZZ	J	Diode	AC
D2001	VHD1SS119//-1	J	Diode	AB
D2060	RH-EX0298CEZZ	J	Zener Diode	AA

PACKAGED CIRCUITS

▲	PR701	RMPTP0026CEZZ	J	Packaged Circuit	AF
	X801	RCRSB0001PEZZ	R	Crystal	AL
	or	RCRSB0205CEZZ			

FILTERS

CF301	RFiLC0403CEZZ	J	Filter	AE
	or RFiLC0029TAZZ			
CF302	RFiLC0404CEZZ	J	Filter	AF
	or RFiLC0029TAZZ	J		AD
	or RFiLC0007PEZZ	R		AF
CF401	RFiLC0013CEZZ	J	Filter	AE
	or RFiLC0004PEZZ	R		AE
CF631	RFiLA0034CEZZ	J	Filter	AD
CF2040	RFiLC0121GEZZ	J	Filter	AD

COILS

L201	VP-XF1R2K0000	J	Peaking 1.2μH	AB
L202	RCiLi0612CEZZ	J	If Coil	AE
	or RCiLi0588CEZZ			
L301	VP-XF8R2K0000	J	Peaking 8.2μH	AB
L302	RCiLi0613CEZZ	J	If Coil	AE
	or RCiLi0605CEZZ			
L401	VP-XF6R8K0000	J	Peaking 6.8μH	AB
L402	VP-XF3R3K0000	J	Peaking 3.3μH	AB
L403	VP-XF100K0000	J	Peaking 10μH	AB
L404	VP-XF8R2K0000	J	Peaking 8.2μH	AB
L406	VP-XF680K0000	J	Peaking 68μH	AB
L409	VP-XF100K0000	J	Peaking 10μH	AB
△ L701	RCiLF0029PEZZ	R	Coil	—
	or RCiLi0235CEZZ		(20J-S100/S100S/21MJ50)	
	or RCiLi0087CEZZ			
△ L701	RCiLF0090CEZZ	J	Coil (CJ20S10)	
L2040	RCiLB0131CEZZ	J	Oscillation Coil	AE
SF201	RFiLC0405CEZZ	J	Filter	AH

TRANSFORMERS

▲	T601	RTRNZ0168CEZZ	J	Transformer	AH
▲▲	T602	RTRNF0149PEZZ	R	H-Out	—
▲	T701	RTRNP0518CEZZ	J	Power	AN

CAPACITORS

(EL: Electrolytic, M-Poly.: Metalized Polypro Film)

C51	VCEA0A1CW476M	J	47	16V	EL.	AB
C52	VCSATA1CE226K	J	22	16V	Tantalum	AD
C53	VCEA0A1HW105M	J	1.0	50V	EL.	AB
C54	VCEA0A1HW225M	J	2.2	50V	EL.	AB
C55	VCEA0A1CW477M	J	470	16V	EL.	AC
C102	VCEAGA1CW108M	J	1000	16V	EL.	AD
C201	VCKYCY1HF103Z	J	0.01	50V	Ceramic	AA

Ref. No.	Part No.	★	Description	Code	Ref. No.	Part No.	★	Description	Code	
DUNTK9273WEV3/V6/V9					C552	VCEA0A1HW225M	J	2.2 50V EL.	AB	
DUNTK9316WEV1 MAIN UNIT					C604	VCEA0A1CW227M	J	220 16V EL.	AC	
C202	VCKYPA1HF103Z	J	0.01 50V	Ceramic AA	▲▲ C608	VCFPPD3CA712H	J	7100p 1.6kV M-Poly. (20J-S100/21MJ50/CJ20S10)	AE	
C203	VCKYCY1HF103Z	J	0.01 50V	Ceramic AA	▲▲ C608	VCFPPD3CA742H	J	7400p 1.6kV M-Poly. (20J-S100S)	AF	
C204	VCKYCY1HF103Z	J	0.01 50V	Ceramic AA	C609	RC-QZA223TAYK	J	0.022 50V Mylar	AB	
C205	VCEA0A1HW474M	J	0.47 50V	EL.	AB	C612	VCFPPJ2EB564J	J	0.56 250V M-Poly.	—
C206	VCEA0A1CW227M	J	220 16V	EL.	AC	C631	VCEA0A1HW225M	J	2.2 50V EL.	AB
C207	VCKYCY1HF103Z	J	0.01 50V	Ceramic AA	C632	VCKYCY1HF103Z	J	0.01 50V Ceramic	AA	
C208	VCEA0A1HW474M	J	0.47 50V	EL.	AB	C633	VCEA0A1HW105M	J	1.0 50V EL.	AB
C209	VCKYCY1HB222K	J	2200p 50V	Ceramic AA	C652	VCEA0A1HW475M	J	4.7 50V EL.	AB	
C210	VCKYCY1HB102K	J	1000p 50V	Ceramic AA	C653	VCEA0A1CW106M	J	10 16V EL.	AB	
C302	VCCCCY1HH330J	J	33p 50V	Ceramic AA	C661	VCKYPA2HB152K	J	1500p 500V Ceramic	AA	
C303	VCCCCY1HH390J	J	39p 50V	Ceramic AA	C662	VCEA0A1CW477M	J	470 16V EL.	AC	
C305	VCKYPA1HB151K	J	150p 50V	Ceramic AA	▲ C701	RC-FZ004SGEZZ	J	0.47 AC125V Plastic	AE	
C306	VCKYPA1HF103Z	J	0.01 50V	Ceramic AA	or	RC-QZ005SCEZZ				
C308	VCKYCY1HB102K	J	1000p 50V	Ceramic AA	or	RC-FZ002SCEZZ				
C309	VCEA0A1CW227M	J	220 16V	EL.	AC	or	RC-FZ027CUMZZ			
C312	VCKYCY1HF103Z	J	0.01 50V	Ceramic AA	or	RC-FZ0279CEZZ				
C313	VCEA0A1HW225M	J	2.2 50V	EL.	AB	or	RC-FZ015SCEZZ			
C351	VCKYCY1HB562K	J	5600p 50V	Ceramic AA	C702	VCKYPB2HE103P	J	0.01 500V Ceramic	AB	
C352	VCEA0A1CW107M	J	100 16V	EL.	AC	C703	VCKYPB2HE103P	J	0.01 500V Ceramic	AB
C353	VCEA0A1CW337M	J	330 16V	EL.	AC	C704	VCKYPB2HE103P	J	0.01 500V Ceramic	AB
C354	RC-QZA104TAYK	J	0.1 50V	Mylar	AB	▲ C705	RC-EZ0422CEZZ	J	470 200V EL.	AN
C355	VCEA0A1CW226M	J	22 16V	EL.	AB	or	RC-EZ0522CEZZ			AN
C361	VCEAGA1CW108M	J	1000 16V	EL.	AD	or	RC-EZ0423CEZZ	620 200V EL.		
C362	VCEA0A1CW476M	J	47 16V	EL.	AB	or	RC-EZ0523CEZZ	560 200V EL.		
C402	VCCCCY1HH331J	J	330p 50V	Ceramic AA	▲ C706	RC-KZ0311CEZZ	J	0.0033 AC125V Ceramic	AC	
C403	VCCCCY1HH101J	J	100p 50V	Ceramic AA	or	RC-KZ0092GEZZ				AD
C405	VCEA0A1HW335M	J	3.3 50V	EL.	AB	▲ C707	VCEAGA2CW226M	J	22 160V EL.	AD
C406	VCEA0A1HW335M	J	3.3 50V	EL.	AB	C711	VCKYPA1HF103Z	J	0.01 50V Ceramic	AA
C407	RC-QZA104TAYK	J	0.1 50V	Mylar	AB	C712	RC-EZ0638CEZZ	J	33 160V EL.	AG
C408	VCEA0A1CW106M	J	10 16V	EL.	AB	C751	VCEA0A1CW476M	J	47 16V EL.	—
C409	VCEA0A1HW105M	J	1.0 50V	EL.	AB	C753	VCEAGA1VW477M	J	470 35V EL.	AD
C410	VCKYCY1EF104Z	J	0.1 25V	Ceramic AA	C754	VCEA0A1CW337M	J	330 16V EL.	AC	
C411	VCEAGA1CW108M	J	1000 16V	EL.	AD	C756	VCEA0A1CW107M	J	100 16V EL.	AC
C413	VCKYCY1HF103Z	J	0.01 50V	Ceramic AA	C757	RC-QZA104TAYK	J	0.1 50V Mylar	AB	
C414	VCKYCY1EF104Z	J	0.1 25V	Ceramic AA	▲ C758	VCEAGA2EW106M	J	10 250V EL.	AC	
C419	VCCCCY1HH330J	J	33p 50V	Ceramic AA	C759	VCKYPA2HB102K	J	1000p 500V Ceramic	AA	
C420	VCCCCY1HH471J	J	470p 50V	Ceramic AA	C801	RC-QZA223TAYK	J	0.022 50V Mylar	AB	
C451	RC-QZA563TAYK	J	0.056 50V	Mylar	AB	C802	VCEA0A1HW474M	J	0.47 50V EL.	AB
C454	VCEA0A1HW475M	J	4.7 50V	EL.	AB	C803	VCCCCY1HH120J	J	12p 50V Ceramic	AA
C502	VCEA0A1EW477M	J	470 25V	EL.	AD	C804	VCEA0A1HW104M	J	0.1 50V EL.	AB
C504	VCKYPA2HB391K	J	390p 500V	Ceramic AA	C805	VCEA0A1HW104M	J	0.1 50V EL.	AB	
C505	VCQYTA1HM473K	J	0.047 50V	Mylar	AB	C806	VCEA0A1HW104M	J	0.1 50V EL.	AB
C506	RC-QZA104TAYK	J	0.1 50V	Mylar	AB	C807	VCCCCY1HH820J	J	82p 50V Ceramic	AA
C507	RC-QZA103TAYK	J	0.1 50V	Mylar	AA	C901	VCKYCY1EF104Z	J	0.1 25V Ceramic	AA
C508	VCEAGA1VW107M	J	100 35V	EL.	AC	C904	VCEA0A1HW335M	J	3.3 50V EL.	AB
C509	VCKYPA2HB102K	J	1000p 500V	Ceramic AA	C905	VCEA0A1HW335M	J	3.3 50V EL.	AB	
C510	VCEAGA1VW477M	J	470 35V	EL.	AD	C2001	VCCCCY1HH101J	J	100p 50V Ceramic	AA
C511	VCQYTA1HM473K	J	0.047 50V	Mylar	AB	C2002	VCCCCY1HH101J	J	100p 50V Ceramic	AA
C513	VCEACA1HC225M	J	2.2 50V	EL.	AC	C2003	VCEA0A1CW106M	J	10 16V EL.	AB
C514	VCEACA1HC225J	J	2.2 50V	EL.	AC	C2021	VCCCCY1HH101J	J	100p 50V Ceramic	AA
C517	VCKYPA1HB102K	J	1000p 50V	Ceramic AA	C2022	VCCCCY1HH101J	J	100p 50V Ceramic	AA	
C522	VCKYCY1HF103Z	J	0.01 50V	Ceramic AA	C2023	VCCCCY1HH101J	J	100p 50V Ceramic	AA	
C551	VCSATA1CE225K	J	2.2 16V	Tantalum AB						

Ref. No.	Part No.	★	Description	Code
DUNTK9273WEV3/V6/V9				
DUNTK9316WEV1 MAIN UNIT				
C2024	VCCCCY1HH101J	J	100p 50V Ceramic	AA
C2040	VCEA0A1AW107M	J	100 10V EL.	AB
C2041	VCEA0A1HW105M	J	1.0 50V EL.	AB
C2060	RC-QZA104TAYK	J	0.1 50V Mylar	AB
C2061	VCKYD41HB101K	J	100p 50V Ceramic	AA
C2062	VCEA0A1AW107M	J	100 10V EL.	AB
C2401	VCCSD41HL560J	J	56p 50V Ceramic	AA
C2601	VCEA0A1CW476M	J	47 16V EL.	AB
C2602	VCCCCY1HH101J	J	100p 50V Ceramic	AA

RESISTORS

(M-Ox: Metal Oxide, M-Film: Metal Film)

RJ1	VRN-MD2AL000J	J	0 0.1W	M-Film	AA
RJ5	VRN-MD2AL000J	J	0 0.1W	M-Film	AA
RJ6	VRN-MD2AL000J	J	0 0.1W	M-Film	AA
RJ7	VRN-MD2AL000J	J	0 0.1W	M-Film	AA
RJ9	VRN-MD2AL000J	J	0 0.1W	M-Film	AA
RJ10	VRN-MD2AL000J	J	0 0.1W	M-Film	AA
RJ12	VRN-MD2AL000J	J	0 0.1W	M-Film	AA
RJ13	VRN-MD2AL000J	J	0 0.1W	M-Film	AA
RJ14	VRN-MD2AL000J	J	0 0.1W	M-Film	AA
RJ15	VRN-MD2AL000J	J	0 0.1W	M-Film	AA
RJ17	VRN-MD2AL000J	J	0 0.1W	M-Film	AA
RJ18	VRN-MD2AL000J	J	0 0.1W	M-Film	AA
RJ19	VRN-MD2AL000J	J	0 0.1W	M-Film	AA
RJ20	VRN-MD2AL000J	J	0 0.1W	M-Film	AA
RJ21	VRN-MD2AL000J	J	0 0.1W	M-Film	AA
RJ24	VRN-MD2AL000J	J	0 0.1W	M-Film	AA
RJ26	VRN-MD2AL000J	J	0 0.1W	M-Film	AA
RJ29	VRN-MD2AL000J	J	0 0.1W	M-Film	AA
RJ30	VRN-MD2AL000J	J	0 0.1W	M-Film	AA
RJ32	VRN-MD2AL000J	J	0 0.1W	M-Film	AA
RJ35	VRN-MD2AL000J	J	0 0.1W	M-Film	AA
RJ40	VRN-MD2AL000J	J	0 0.1W	M-Film	AA
RJ49	VRN-MD2AL000J	J	0 0.1W	M-Film	AA
RJ50	VRN-MD2AL000J	J	0 0.1W	M-Film	AA
△ RJ51	VRN-MD2AL000J	J	0 0.1W	M-Film	AA
△ RJ52	VRN-MD2AL000J	J	0 0.1W	M-Film	AA
△ RJ53	VRN-MD2AL000J	J	0 0.1W	M-Film	AA
RJ55	VRN-MD2AL000J	J	0 0.1W	M-Film	AA
RJ59	VRN-MD2AL000J	J	0 0.1W	M-Film	AA
RJ62	VRN-MD2AL000J	J	0 0.1W	M-Film	AA
RJ63	VRN-MD2AL000J	J	0 0.1W	M-Film	AA
RJ64	VRN-MD2AL000J	J	0 0.1W	M-Film	AA
RJ66	VRN-MD2AL000J	J	0 0.1W	M-Film	AA
RJ68	VRN-MD2AL000J	J	0 0.1W	M-Film	AA
△ R51	VRS-VV3AB331J	J	330 1W	M-Ox.	AA
△ R52	VRS-VV3DB470J	J	47 2W	M-Ox.	AA
△ R53	VRS-VV3LB223J	J	22k 3.0W	M-Ox.	AB
R54	VRN-MD2AL101J	J	100 0.1W	M-Film	AA
R55	VRN-MD2AL101J	J	100 0.1W	M-Film	AA
R56	VRN-MD2AL823J	J	82k 0.1W	M-Film	AA
R57	VRN-MD2AL223J	J	22k 0.1W	M-Film	AA

Ref. No.	Part No.	★	Description			Code
R201	VRN-MD2AL221J	J	220	0.1W	M-Film	AA
R202	VRD-RA2BE122J	J	1.2k	1/8W	Carbon	AA
R203	VRD-RA2BE682J	J	6.8k	1/8W	Carbon	AA
R204	VRN-MD2AL270J	J	27	0.1W	M-Film	AA
R205	VRD-RA2BE391J	J	390	1/8W	Carbon	AA
R206	VRD-RA2EE151J	J	150	1/4W	Carbon	AA
R208	VRN-MD2AL391J	J	390	0.1W	M-Film	AA
R301	VRD-RA2BE222J	J	2.2k	1/8W	Carbon	AA
R302	VRN-MD2AL102J	J	1.0k	0.1W	M-Film	AA
R303	VRN-MD2AL103J	J	10k	0.1W	M-Film	AA
R304	VRN-MD2AL333J	J	33k	0.1W	M-Film	AA
R307	VRN-MD2AL333J	J	33k	0.1W	M-Film	AA
R352	VRN-MD2AL332J	J	3.3k	0.1W	M-Film	AA
R353	VRN-MD2AL4R7J	J	4.7	0.1W	M-Film	AA
R354	VRN-MD2AL152J	J	1.5k	0.1W	M-Film	AA
R361	VRD-RA2BE102J	J	1.0k	1/8W	Carbon	AA
R364	VRN-MD2AL473J	J	47k	0.1W	M-Film	AA
R401	VRN-MD2AL682J	J	6.8k	0.1W	M-Film	AA
R403	VRD-RA2BE331J	J	330	1/8W	Carbon	AA
R404	VRN-MD2AL391J	J	390	0.1W	M-Film	AA
R405	VRD-RA2BE102J	J	1.0k	1/8W	Carbon	AA
R406	VRN-MD2AL470J	J	47	0.1W	M-Film	AA
R407	VRN-MD2AL680J	J	68	0.1W	M-Film	AA
R408	VRN-MD2AL102J	J	1.0k	0.1W	M-Film	AA
R409	VRN-MD2AL471J	J	470	0.1W	M-Film	AA
R410	VRD-RA2BE563J	J	56k	1/8W	Carbon	AA
R411	VRN-MD2AL103J	J	10k	0.1W	M-Film	AA
R412	VRD-RA2EE561J	J	560	1/4W	Carbon	AA
R413	VRD-RA2BE470J	J	47	1/8W	Carbon	AA
R414	VRD-RA2BE470J	J	47	1/8W	Carbon	AA
R415	VRD-RA2BE470J	J	47	1/8W	Carbon	AA
R416	VRN-MD2AL102J	J	1.0k	0.1W	M-Film	AA
R417	VRD-RA2BE101J	J	100	1/8W	Carbon	AA
R418	VRN-MD2AL152J	J	1.5k	0.1W	M-Film	AA
R419	VRN-MD2AL472J	J	4.7k	0.1W	M-Film	AA
R423	VRN-MD2AL222J	J	2.2k	0.1W	M-Film	AA
R426	VRN-MD2AL271J	J	270	0.1W	M-Film	AA
R440	VRN-MD2AL821J	J	820	0.1W	M-Film	AA
⚠ R451	VRS-VV3AB103J	J	10k	1W	M-Ox.	AA
R452	VRD-RA2BE152J	J	1.5k	1/8W	Carbon	AA
R454	VRD-RA2BE274J	J	270k	1/8W	Carbon	AA
R455	VRD-RA2BE392J	J	3.9k	1/8W	Carbon	AA
R456	VRN-MD2AL223J	J	22k	0.1W	M-Film	
R457	VRD-RA2BE102J	J	1.0k	1/8W	Carbon	AA
R458	VRD-RA2BE474J	J	470k	1/8W	Carbon	AA
R459	VRD-RA2BE123J	J	12k	1/8W	Carbon	AA
R504	VRD-RA2BE471J	J	470	1/8W	Carbon	AA
R505	VRD-RA2BE101J	J	100	1/8W	Carbon	AA
R506	VRD-RA2BE683G	J	68k	1/8W	Carbon	AA
R507	VRD-RA2BE104G	J	100k	1/8W	Carbon	AA
R508	VRD-RA2BE473J	J	47k	1/8W	Carbon	AA
R510	VRD-RM2HD1R5J	J	1.5	1/2W	Carbon	AA
			(20J-S100/21MJ50/CJ20S10)			
R510	VRD-RM2HD1R2J	J	1.2	1/2W	Carbon	AA
			(20J-S100S)			
⚠ R511	VRN-SV2HB1R5J	J	1.5	1/2W	M-Film	AA

Ref. No.	Part No.	★	Description	Code	Ref. No.	Part No.	★	Description	Code
DUNTK9273WEV3/V6/V9					△ R758				
DUNTK9316WEV1 MAIN UNIT					R801				
R512	VRD-RM2HD331J	J	330 1/2W	Carbon	AA	R802	VRN-MD2AL332J	J	3.3k 0.1W
R516	VRD-RA2BE683G	J	68k 1/8W	Carbon	AA	R803	VRN-MD2AL182J	J	1.8k 0.1W
R517	VRD-RA2BE103G	J	10k 1/8W	Carbon	AA	R804	VRN-MD2AL182J	J	1.8k 0.1W
R518	VRD-RA2BE154J	J	150k 1/8W	Carbon	AA	R805	VRN-MD2AL182J	J	1.8k 0.1W
R524	VRN-MD2AL332J	J	3.3k 0.1W	M-Film	AA	R806	VRN-MD2AL333J	J	33k 0.1W
R525	VRD-RA2BE473J	J	47k 1/8W	Carbon	AA	R902	VRN-MD2AL750J	J	75 0.1W
R552	VRD-RA2BE102J	J	1.0k 1/8W	Carbon	AA	R905	VRN-MD2AL102J	J	1.0k 0.1W
R553	VRN-MD2AL273J	J	27k 0.1W	M-Film	AA	R906	VRN-MD2AL102J	J	1.0k 0.1W
R554	VRN-MD2AL472J	J	4.7k 0.1W	M-Film	AA	R924	VRN-MD2AL104J	J	100k 0.1W
R602	VRD-RA2EE820J	J	82 1/4W	Carbon	AA	R925	VRN-MD2AL104J	J	100k 0.1W
△ R603	VRS-SV3LB220J	J	22 3.0W	M-Ox.	AB	R961	VRN-MD2AL101J	J	100 0.1W
R605	VRN-MD2AL332J	J	3.3k 0.1W	M-Film	AA	R962	VRN-MD2AL101J	J	100 0.1W
R606	VRD-RA2BE102J	J	1.0k 1/8W	Carbon	AA	R2001	VRD-RA2BE102J	J	1.0k 1/8W
R607	VRD-RA2BE101J	J	100 1/8W	Carbon	AA	R2002	VRN-MD2AL103J	J	10k 0.1W
R608	VRD-RA2BE101J	J	100 1/8W	Carbon	AA	R2006	VRN-MD2AL103J	J	10k 0.1W
R609	VRD-RA2BE331J	J	330 1/8W	Carbon	AA	R2008	VRD-RA2BE224J	J	220k 1/8W
R610	VRS-VV3DB391J	J	390 2W	M-Ox.	AA	R2009	VRN-MD2AL102J	J	1.0k 0.1W
R620	VRD-RA2BE103J	J	10k 1/8W	Carbon	AA	R2010	VRN-MD2AL102J	J	1.0k 0.1W
R621	VRN-MD2AL682J	J	6.8k 0.1W	M-Film	AA	R2011	VRN-MD2AL821J	J	820 0.1W
R631	VRN-MD2AL391J	J	390 0.1W	M-Film	AA	R2012	VRN-MD2AL471J	J	470 0.1W
R632	VRN-MD2AL152J	J	1.5k 0.1W	M-Film	AA	R2020	VRD-RM2HD223J	J	22k 1/2W
R633	VRN-MD2AL472J	J	4.7k 0.1W	M-Film	AA	R2022	VRD-RA2BE333J	J	33k 1/8W
R634	VRD-RM2HD101J	J	100 1/2W	Carbon	AA	R2024	VRD-RA2BE682J	J	6.8k 1/8W
R641	VRS-VV3AB682J	J	6.8k 1W	M-Ox.	AA	R2025	VRD-RA2BE682J	J	6.8k 1/8W
R642	VRD-RA2BE821J	J	820 1/8W	Carbon	AA	R2026	VRD-RA2BE682J	J	6.8k 1/8W
▲△ R651	VRD-RM2HD1R0J	J	1.0 1/2W	Carbon	AA	R2027	VRD-RA2BE682J	J	6.8k 1/8W
▲△ R653	VRD-RA2BE102J	J	1.0k 1/8W	Carbon	AA	R2028	VRD-RA2BE102J	J	1.0k 1/8W
▲△ R654	VRD-RA2BE473J	J	47k 1/8W	Carbon	AA	R2029	VRN-MD2AL102J	J	1.0k 0.1W
▲△ R655	VRN-MD2AL104J	J	100k 0.1W	M-Film	AA	R2031	VRN-MD2AL103J	J	10k 0.1W
△ R659	VRN-VV3AB2R7J	J	2.7 1W	M-Film	AA	R2032	VRN-MD2AL471J	J	470 0.1W
△ R661	VRN-VV3ABR47J	J	0.47 1W	M-Film	AA	R2040	VRN-MD2AL102J	J	1.0k 0.1W
△ R701	VRC-UA2HG275K	J	2.7M 1/2W	Solid	AA	R2041	VRN-MD2AL333J	J	33k 0.1W
	or RR-DZ0047CEZZ		(20J-S100/S100S/21MJ50)			R2042	VRN-MD2AL101J	J	100 0.1W
△ R701	VRC-UB2HG275K	J	2.7M 1/2W	Solid	AA	R2043	VRN-MD2AL101J	J	100 0.1W
			(CJ20S10)			R2044	VRN-MD2AL682J	J	6.8k 0.1W
△ R702	VRW-KP3HC1R8K	J	1.8 5W	Cement	AC	R2045	VRN-MD2AL101J	J	100 0.1W
△ R703	VRS-KA3NG681J	J	680 7W	M-Ox.	AF	R2047	VRN-MD2AL221J	J	220 0.1W
△ R704	VRS-VV3AB123J	J	12k 1W	M-Ox.	AA	R2048	VRD-RA2BE562J	J	5.6k 1/8W
	R705	J	330k 1/4W	Carbon	AA	R2049	VRN-MD2AL333J	J	33k 0.1W
	R706	J	47 1/2W	Carbon	AA	R2054	VRN-MD2AL103J	J	10k 0.1W
△ R707	VRN-VV3DB1R5J	J	1.5 2W	M-Film	AB	R2055	VRN-MD2AL103J	J	10k 0.1W
△ R708	VRD-RM2HD824J	J	820k 1/2W	Carbon	AA	R2060	VRN-MD2AL221J	J	220 0.1W
△ R709	VRS-KA3NG681J	J	680 7W	M-Ox.	AF	R2061	VRN-MD2AL562J	J	5.6k 0.1W
△ R711	VRS-KA3NG681J	J	680 7W	M-Ox.	AF	R2062	VRN-MD2AL183J	J	18k 0.1W
△ R717	VRS-KA3HG3R3K	J	3.3 5W	M-Ox.	AD	R2063	VRD-RA2BE222J	J	2.2k 1/8W
△ R730	VRN-VV3LB2R7J	J	2.7 3W	M-Film	AB	R2064	VRD-RA2BE332J	J	3.3k 1/8W
	R731	J	33 1/4W	Carbon	AA	R2066	VRN-MD2AL103J	J	10k 0.1W
△ R734	VRS-KA3NG330J	J	33 7W	M-Ox.	AE	R2067	VRN-MD2AL103J	J	10k 0.1W
	R751	J	330 1/2W	Carbon	AA	R2068	VRN-MD2AL103J	J	10k 0.1W
	R752	J	5.6k 1/8W	Carbon	AA	R2070	VRN-MD2AL103J	J	10k 0.1W
	R754	J	22k 1/8W	Carbon	AA	R2101	VRN-MD2AL101J	J	100 0.1W
△ R755	VRS-VV3DB470J	J	47 2W	M-Ox.	AA	R2102	VRN-MD2AL101J	J	100 0.1W
	R757	J	4.7k 1/8W	Carbon	AA	R2501	VRN-MD2AL123J	J	12k 0.1W
						R2503	VRN-MD2AL273J	J	27k 0.1W

Ref. No.	Part No.	★	Description	Code
DUNTK9273WEV3/V6/V9 DUNTK9316WEV1 MAIN UNIT				
R2504	VRN-MD2AL123J	J	12k 0.1W M-Film	AA
R2505	VRN-MD2AL563J	J	56k 0.1W M-Film	AA
R2506	VRD-RA2BE563J	J	56k 1/8W Carbon	AA
R2507	VRN-MD2AL823J	J	82k 0.1W M-Film	AA
R2508	VRN-MD2AL153J	J	15k 0.1W M-Film	AA
R2509	VRN-MD2AL272J	J	2.7k 0.1W M-Film	AA
R2601	VRD-RA2BE470J	J	47 1/8W Carbon	AA

SWITCHES

S2501	QSW-K0079GEZZ	J	Power	AB
S2502	QSW-K0079GEZZ	J	Vol.-Down	AB
S2503	QSW-K0079GEZZ	J	Vol.-Up	AB
S2504	QSW-K0079GEZZ	J	Ch.-Down	AB
S2505	QSW-K0079GEZZ	J	Ch.-Up	AB

MISCELLANEOUS PARTS

△ RY701	RRLYU0036CEZZ	J	Relay	AM
or	RRLYU0028CEZZ			AK
△ F701	QFS-B4023CEZZ	J	Fuse	AC
FB602	RBLN-0037CEZZ	J	Balun	AB
FB603	RBLN-0037CEZZ	J	Balun	AB
FH701	QFSDH1013CEZZ	J	Fuse Holder	AC
or	QFSDH1009CEZZ			
FH702	QFSDH1014CEZZ	J	Fuse Holder	AC
or	QFSDH1010CEZZ			
J903	QJAKE0159CEZZ	J	Jack	AF
J904	QJAKE0160CEZZ	J	Jack	AF
J905	QJAKE0158CEZZ	J	Jack	AF
P301	QPLGN0661CEZZ	J	Plug	AD
P302	QPLGN0461CEZZ	J	Plug	AB
P401	QPLGN0561CEZZ	J	Plug	AB
P601	QPLGN0603CEZZ	J	Plug	AB
P651	QPLGN0361CEZZ	J	Plug	AB
P701	QPLGN0207CEZZ	J	Plug	AA
P751	QPLGN0461CEZZ	J	Plug	AB
P2001	QPLGN0561CEZZ	J	Plug	AB
SC3001	QSOCN0259FJ00	J	Socket	AE
RMC2601	RRMCU0222CEZZ	J	Remote Receiver	AL
RDA501	PRDAR0218PEFW	M	Heat Sink	AD
RDA602	PRDAR0216PEFW	M	Heat Sink	AE
RDA701	PRDAR0238PEFW	M	Heat Sink	AN
TP701	QLUGP0102PEZZ	M	Lug	AA
	PZETM0016CEZZ	J	Insulator	AB
	LHLDW1002PEZZ	M	Holder	AB

Ref. No.	Part No.	★	Description	Code
DUNTK9274WEV3 DUNTK9274WEV3 CRT UNIT				
TRANSISTORS				
Q852	VS2SC2229O/1E	J	2SC2229 (O)	AD
Q854	VS2SC2229O/1E	J	2SC2229 (O)	AD
Q856	VS2SC2229O/1E	J	2SC2229 (O)	AD
Q881	VS2SA1266-Y-1	J	2SA1266 (Y)	AA
or	VS2SA1015Y/-1			

DIODES AND COIL

D881	VHD1SS119/-1	J	Diode	AB
D882	VHD1SS119/-1	J	Diode	AB
D885	VHD1SS119/-1	J	Diode	AB
L851	VP-DF151K0000	J	Peaking 150μH	AB

CAPACITORS

(EL: Electrolytic, M-Poly.: Metalized Polypro Film)

C851	VCCCCY1HH271J	J	270p 50V Ceramic	AA
C852	VCCCCY1HH271J	J	270p 50V Ceramic	AA
C853	VCCCCY1HH271J	J	270p 50V Ceramic	AA
C854	RC-KZ0016CEZZ	J	0.1 1.4kV Ceramic	AC
C858	VCKYCY1HB102K	J	1000p 50V Ceramic	AA
C881	VCEA0A1CW106M	J	10 16V EL.	AB
C883	VCEA0A1CW336M	J	33 16V EL.	AB

RESISTORS

(M-Ox: Metal Oxide, M-Film: Metal Film)

R851	VRN-MD2AL470J	J	47 0.1W M-Film	AA
R852	VRD-RA2BE221J	J	220 1/8W Carbon	AA
R853	VRN-MD2AL121J	J	120 0.1W M-Film	AA
△ R857	VRS-VV3AB123J	J	12k 1W M-Ox.	AA
R858	VRD-RM2HD332J	J	3.3k 1/2W Carbon	AA
R859	VRN-MD2AL470J	J	47 0.1W M-Film	AA
			(20J-S100/21MJ50/CJ20S10)	
R859	VRD-RA2BE470J	J	47 1/8W Carbon	AA
			(20J-S100S)	
R860	VRD-RA2BE221J	J	220 1/8W Carbon	AA
			(20J-S100/21MJ50/CJ20S10)	
R860	VRN-MD2AL221J	J	220 0.1W M-Film	AA
			(20J-S100S)	
R861	VRN-MD2AL121J	J	120 0.1W M-Film	AA
△ R865	VRS-VV3AB123J	J	12k 1W M-Ox.	AA
R866	VRD-RM2HD332J	J	3.3k 1/2W Carbon	AA
R867	VRD-RA2BE470J	J	47 1/8W Carbon	AA
			(20J-S100/21MJ50/CJ20S10)	
R867	VRN-MD2AL470J	J	47 0.1W M-Film	AA
			(20J-S100S)	
R868	VRN-MD2AL221J	J	220 0.1W M-Film	AA
			(20J-S100/21MJ50/CJ20S10)	
R868	VRD-RA2BE221J	J	220 1/8W Carbon	AA
			(20J-S100S)	
R869	VRN-MD2AL121J	J	120 0.1W M-Film	AA
△ R873	VRS-VV3AB123J	J	12k 1W M-Ox.	AA
R874	VRD-RM2HD332J	J	3.3k 1/2W Carbon	AA
R881	VRN-MD2AL561J	J	560 0.1W M-Film	AA

Ref. No.	Part No.	★	Description	Code
DUNTK9274WEV3				
DUNTK9274WEV3 CRT UNIT				
R882	VRN-MD2AL391J	J	390 0.1W M-Film	AA
R883	VRD-RA2BE561J	J	560 1/8W Carbon	AA
R884	VRN-MD2AL152J	J	1.5k 0.1W M-Film	AA
R886	VRN-MD2AL431J	J	430 0.1W M-Film	AA

MISCELLANEOUS PARTS

P851	QPLGN0561CEZZ	J	Plug	AB
P852	QPLGN0461CEZZ	J	Plug	AB
SC851	QSOCV0840CEZZ	J	Socket	AK
or	QSOCV0826CEZZ		(20J-S100/21MJ50/ CJ20S10)	AK
SC851	QSOCV0913CEZZ	J	Socket (20J-S100S)	AK
or	QSOCV0929CEZZ			AM

DUNTK9275WEV5
MTS UNIT**INTEGRATED CIRCUITS**

IC352	VHiTDA7233/-1	J	TDA7233	AF
IC3001	VHiCXA2053Q/-1	J	CXA2053Q/	AX

TRANSISTORS

Q301	VS2SD601AR/-1	J		AC
Q352	VS2SC945AQ/-1	J		AB

CAPACITORS

(EL: Electrolytic, M-Poly.: Metalized Polypro Film)

C315	VCEA0A1HW225M	J	2.2 50V EL.	AB
C356	VCKYCY1HB562K	J	5600p 50V Ceramic	AA
C357	VCEA0A1CW107M	J	100 16V EL.	AC
C358	VCEA0A1CW337M	J	330 16V EL.	AC
C359	VCKYCY1EF104Z	J	0.1 25V Ceramic	AA
C360	VCEA0A1CW226M	J	22 16V EL.	AB
C365	VCEAGA1CW108M	J	1000 16V EL.	AD
C3001	VCE9GA1HW475M	J	4.7 50V EL.	AB
C3002	VCKYCY1HB562K	J	5600p 50V Ceramic	AA
C3003	RC-QZA123TAYK	J	0.012 50V Mylar	AB
C3004	VCEA0A1HW105M	J	1.0 50V EL.	AB
C3005	VCEA0A1HW475M	J	4.7 50V EL.	AB
C3006	VCEA0A1HW106M	J	10 50V EL.	AB
C3007	VCEA0A1HW475M	J	4.7 50V EL.	AB
C3008	VCKYCY1HF103Z	J	0.01 50V Ceramic	AA
C3009	VCEA0A1CW227M	J	220 16V EL.	AC
C3010	VCE9GA1HW475M	J	4.7 50V EL.	AB
C3011	VCEA0A1HW475M	J	4.7 50V EL.	AB
C3012	VCE9GA1HW475M	J	4.7 50V EL.	AB
C3013	VCKYCY1HB272K	J	2700p 50V Ceramic	AA

Ref. No.	Part No.	★	Description	Code
C3014	RC-QZA473TAYK	J	0.047 50V Mylar	AB
C3015	VCSATA1CE335K	J	3.3 16V Tantalum	AC
C3016	VCE9GA1HW475M	J	4.7 50V EL.	AB
C3017	VCSATA1CE106K	J	10 16V Tantalum	AD
C3018	VCEA0A1HW105M	J	1.0 50V EL.	AB
C3019	VCEA0A1HW475M	J	4.7 50V EL.	AB
C3020	VCEA0A1HW475M	J	4.7 50V EL.	AB

RESISTORS

(M-Ox: Metal Oxide, M-Film: Metal Film)

RJ2	VRS-CY1JF000J	J	0 1/16W M-Ox.	AA
RJ3	VRS-CY1JF000J	J	0 1/16W M-Ox.	AA
RJ4	VRS-CY1JF000J	J	0 1/16W M-Ox.	AA
RJ6	VRS-CY1JF000J	J	0 1/16W M-Ox.	AA
RJ7	VRS-CY1JF000J	J	0 1/16W M-Ox.	AA
RJ8	VRS-CY1JF000J	J	0 1/16W M-Ox.	AA
RJ9	VRS-CY1JF000J	J	0 1/16W M-Ox.	AA
RJ12	VRS-CY1JF000J	J	0 1/16W M-Ox.	AA
RJ15	VRS-CY1JF000J	J	0 1/16W M-Ox.	AA
R305	VRS-CY1JF102J	J	1k 1/16W M-Ox.	AA
R306	VRS-CY1JF152J	J	1.5k 1/16W M-Ox.	AA
R355	VRS-CY1JF333J	J	33k 1/16W M-Ox.	AA
R356	VRS-CY1JF332J	J	3.3k 1/16W M-Ox.	AA
R357	VRS-CY1JF4R7J	J	4.7 1/16W M-Ox.	AA
R358	VRS-CY1JF152J	J	1.5k 1/16W M-Ox.	AA
R362	VRS-CY1JF102J	J	1k 1/16W M-Ox.	AA
R3001	VRS-CY1JF221J	J	220 1/16W M-Ox.	AA
R3002	VRS-CY1JF221J	J	220 1/16W M-Ox.	AA
R3003	VRS-CY1JF105J	J	1M 1/16W M-Ox.	AA
R3004	VRS-CY1JF104J	J	100k 1/16W M-Ox.	AA
R3005	VRS-CY1JF623J	J	62k 1/16W M-Ox.	AA
R3007	VRS-CY1JF332J	J	3.3k 1/16W M-Ox.	AA
R3008	VRS-CY1JF302J	J	3k 1/16W M-Ox.	AA
R3010	VRS-CY1JF392J	J	3.9k 1/16W M-Ox.	AA
R3011	VRS-CY1JF102J	J	1k 1/16W M-Ox.	AA
R3012	VRS-CY1JF102J	J	1k 1/16W M-Ox.	AA

MISCELLANEOUS PARTS

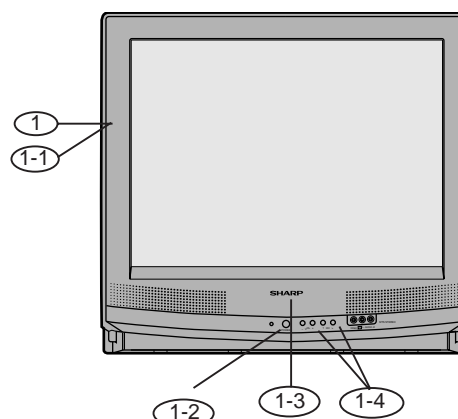
P351	QPLGN0661CEZZ	J	Plug	AD
P3001	QPLGN0242FJ00	J	Plug	AE

Ref. No.	Part No.	★	Description	Code
----------	----------	---	-------------	------

CABINET PARTS

1	CCABA1279MES0	M	Cabinet Complete Ass'y	BC
1-1	—	—	Cabinet Front	—
1-2	GCOVA1034MEKA	M	Cover for R/C	AC
1-3	HBDGB3009MESA	M	Badge "SHARP"	AC
1-4	JBTN-1098MEKA	M	Button,Power, Ch/Vol-up/down	AD
2	GCABB1126MEKA	M	Cabinet,Rear	AX

Ref. No.	Part No.	★	Description	Code
----------	----------	---	-------------	------



MESCELLANEOUS PARTS

SP1	VSP0080PBK98A	M	Speaker, 2pcs used	—
SP2	VSP0080PBK98A	M	Speaker	—
△ ACC701	QACCD3051CESA	M	AC Cord	AK
or	QACCD3037CESA		AC Cord	
or	QACCD3038CESA		AC Cord	
QCNW-2110PEZZ		R	Connecting Cord	—
QCNW-2111PEZZ		R	Connecting Cord	—
QCNW-2116PEZZ		R	Connecting Cord	—
QCNW-2150PEZZ		R	Connecting Cord	—

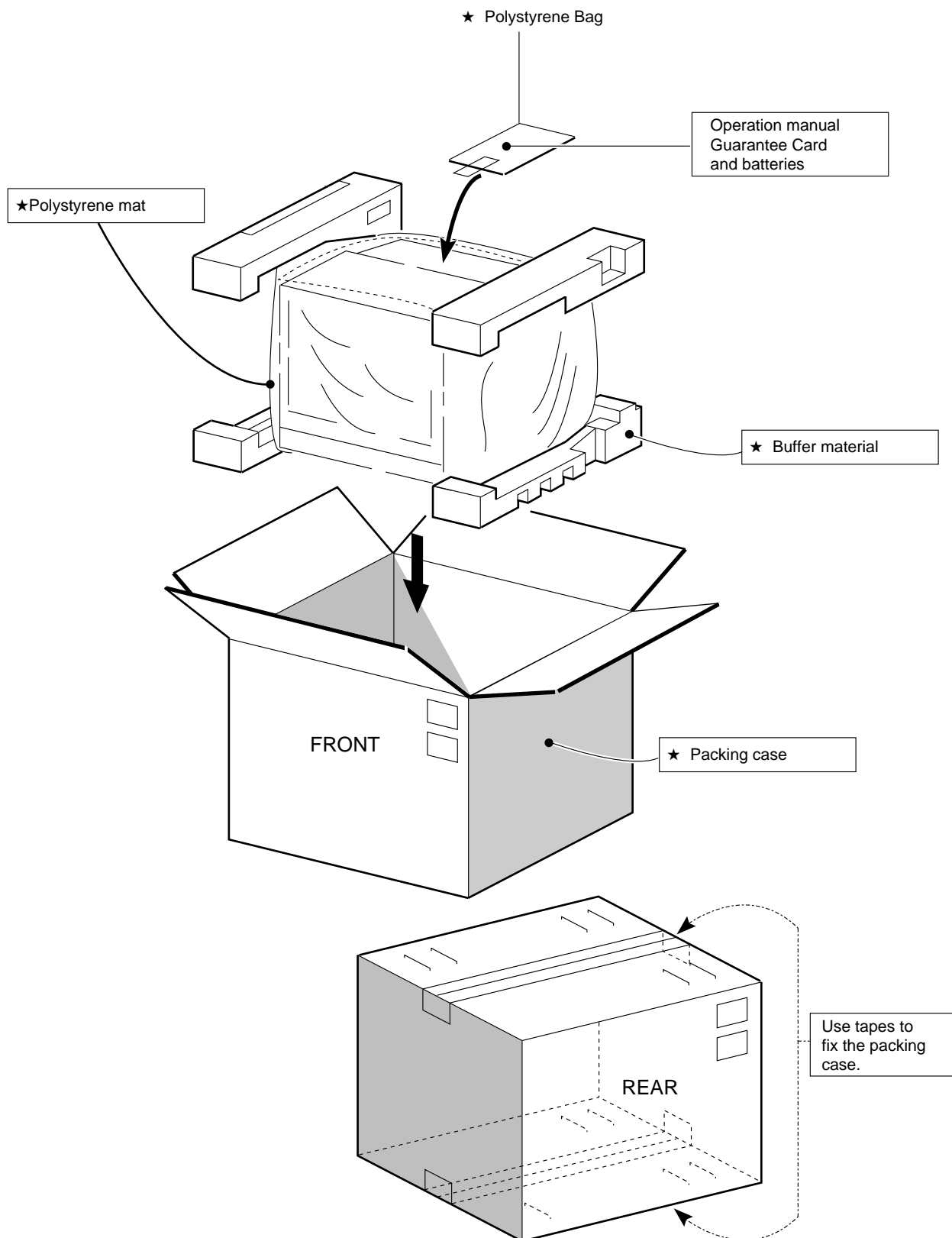
SUPPLIED ACCESSORIES

RRMCG1324CESA	M	Infrared R/C	AQ
		(20J-S100/S100S/21MJ50)	
RRMCG1339CESA	M	Infrared R/C	—
		(CJ20S10)	
TGAN-1006MEZZ	M	Guarantee Card	AA
		(20J-S100/100S)	
TiNS-6033MEZZ	M	Operation Manual	AC
		(20J-S100/100S)	
TiNS-6083MEZZ	M	Operation Manual	AE
		(CJ20S10)	
TiNS-6087MEZZ	M	Operation Manual	AE
		(21MJ50)	

PACKING PARTS

SPAKC0573MEZZ	M	Packing Case	—
		(20J-S100/100S/CJ20S10)	
SPAKC0579MEZZ	M	Packing Case (21MJ50)	—
SPAKP0023MEZZ	M	Polyethylene Sack	—
SPAKX0167MEZZ	M	Buffer Material	—
SSAKA0004MEZZ	M	Polyethylene Sack	—

PACKING OF THE SET



SHARP