

Technical Service Data

Model no.: 20LL27

First Publish: 03-30-2007

Rev. Date: 4-13-98

Print Date: 30/03/2007

Service and Quality
Service Publications Dept.
One Philips Drive
P.O. Box 14810
Knoxville, TN 37914

Pg. SCHEMATIC DIAGRAMS AND PC BOARDS

1. MAIN CHASSIS - SECTION 1
2. MAIN CHASSIS - SECTION 2
3. MAIN CHASSIS - SECTION 3
4. MAIN CHASSIS - SECTION 4
5. CRT

6. MAIN CBA (TOP)
7. MAIN CBA (BOTTOM)
8. CRT CBA (TOP)
9. CRT CBA (BOTTOM)

REFER TO SAFETY GUIDELINES

SAFETY NOTICE: ANY PERSON ATTEMPTING TO SERVICE THIS CHASSIS MUST FAMILIARIZE HIMSELF WITH THE CHASSIS AND BE AWARE OF THE NECESSARY SAFETY PRECAUTIONS TO BE USED WHEN SERVICING ELECTRONIC EQUIPMENT CONTAINING HIGH VOLTAGES.

CAUTION: USE A SEPARATE ISOLATION TRANSFORMER FOR THIS UNIT WHEN SERVICING

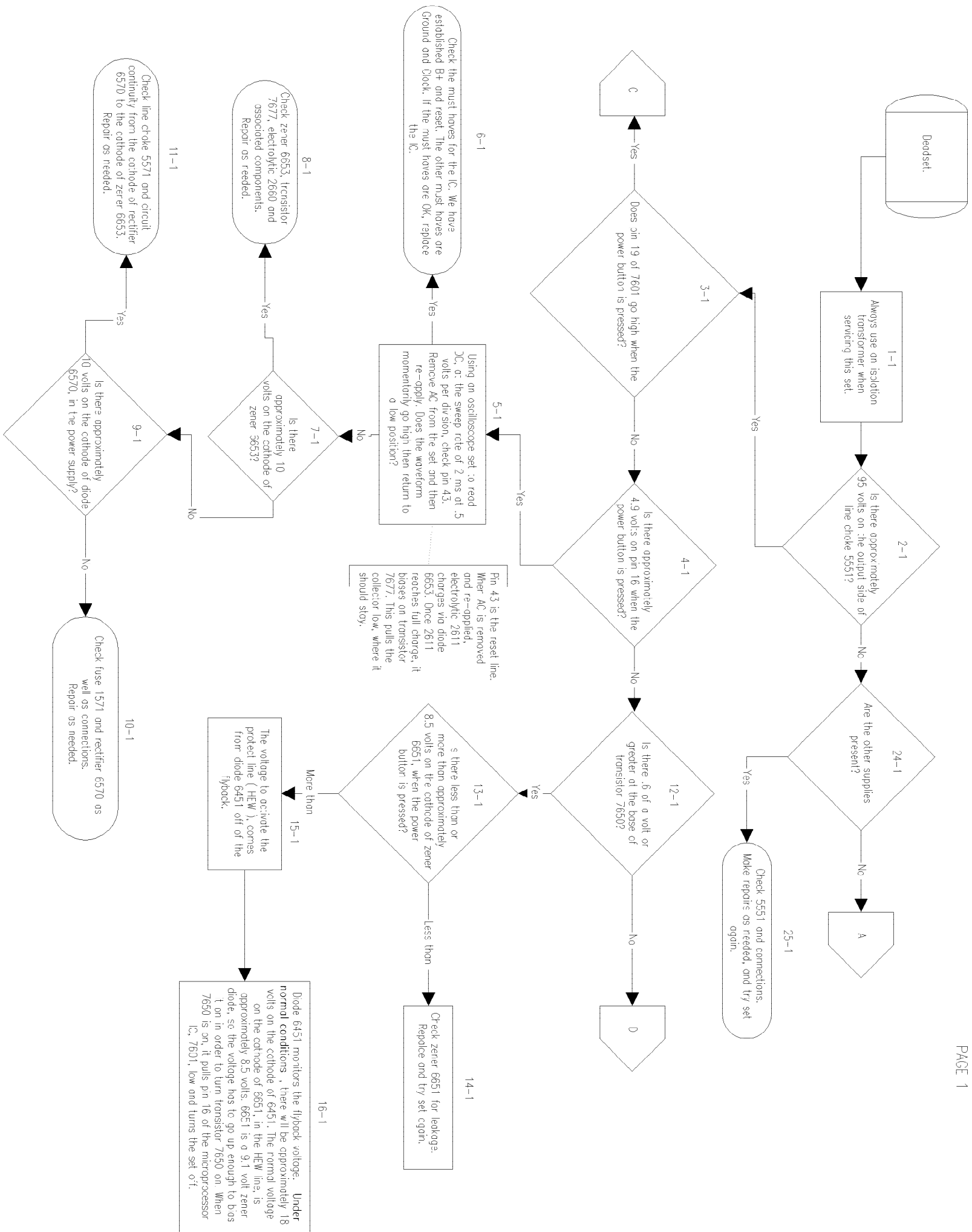
Service and Quality
Service Publications Dept.
One Philips Drive
P.O. Box 14810
Knoxville, TN 37914

Troubleshooting

REFER TO SAFETY GUIDELINES

SAFETY NOTICE: ANY PERSON ATTEMPTING TO SERVICE THIS CHASSIS MUST FAMILIARIZE HIMSELF WITH THE CHASSIS AND BE AWARE OF THE NECESSARY SAFETY PRECAUTIONS TO BE USED WHEN SERVICING ELECTRONIC EQUIPMENT CONTAINING HIGH VOLTAGES.

CAUTION: USE A SEPARATE ISOLATION TRANSFORMER FOR THIS UNIT WHEN SERVICING



No Audio.

1-1

Use an RF signal generator for a color bar pattern and a 1 KHz audio signal, for a more consistent signal while troubleshooting.

One of the functions of this section of the IC is to select the audio source, INT or EXT.

2-1
Is there an audio signal output from pin 50 of the signal processor IC 7225?

16-1
This portion of the IC will work if R3111 opens but if R3106 is open it kills the audio.

16-1
Is there approximately 3.2 volts on pin 5 of IC7225?

17-1
Is there voltage on the opposite side of R3106?

Check circuit continuity back to the 8 volt regulator, 07480. Repair as needed.

If the 8 volt source were missing, the set would be dead.

18-1
Check R3106 and connections. Repair as needed.

5-1

Check C2107 for a shorted condition and R3113 for an open condition. Also check the circuit continuity. Repair as needed.

3-1
Is the audio waveform at the base of transistor 7183?

Remember the block arrows drawn here in the base circuit are reversed.

8-1
Suspect on open 07183.

6-1

6-1
Is the audio waveform on the emitter of transistor 7183?

7-1
Is there approximately 10 volts on the collector of 07183?

There are two output's you may encounter, a 1 watt or a 3 watt version.

12-1

12-1
Is the waveform at pin 2 of IC7121 or pin 3 of IC7120?

13-1

If your set has Smart Sound you will have to troubleshoot the area within the dotted line, otherwise check C2120, C2122, and circuit continuity, back to the emitter of 07183. Repair as needed.

20-1
Is there an FM envelope present at pin 5?

21-1
Replace IC7225.

22-1

22-1
Is there a composite signal being applied to the Band Pass Filter, 1102?

23-1
Replace 1102, and try set again.

24-1

Check continuity back to the emitter of 07214, if no problem is found, refer to the No Video flow chart.

11-1

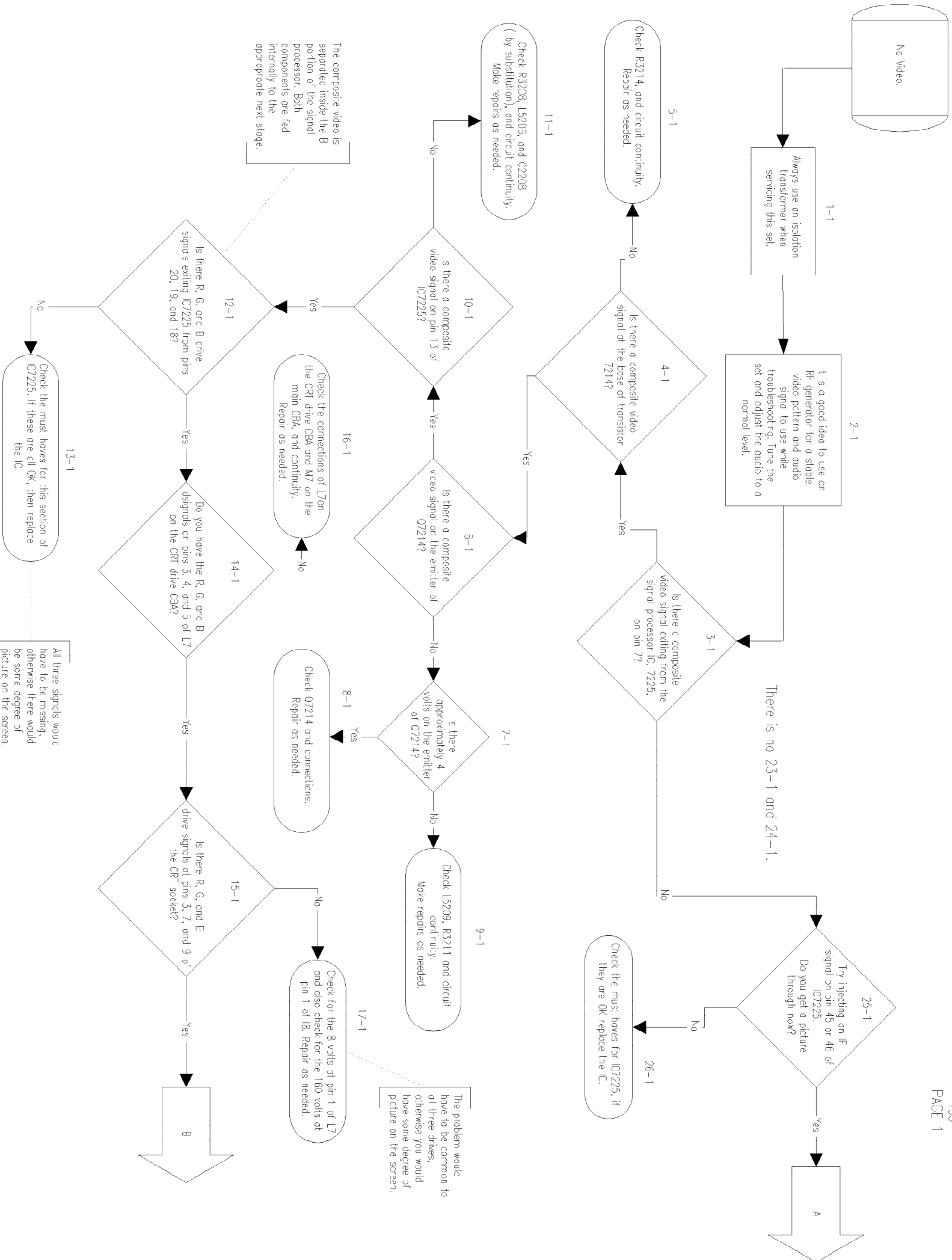
Check DB57C and -1571. Repair as needed.

9-1
Is there approximately 10 volts on the cathode of diode 6570, in the power supply?

10-1

Check line choke 5571 and circuit continuity between 5571 and the collector of transistor 7183. More repairs as needed.

A



Philips Consumer Electronics

Technical Service Data

Service and Quality
Service Publications Dept.
One Philips Drive
P.O. Box 14810
Knoxville, TN 37914

Manual 7560

Model no.: 20LL27

First Publish: 03-30-2007

Rev. Date: 4-13-98

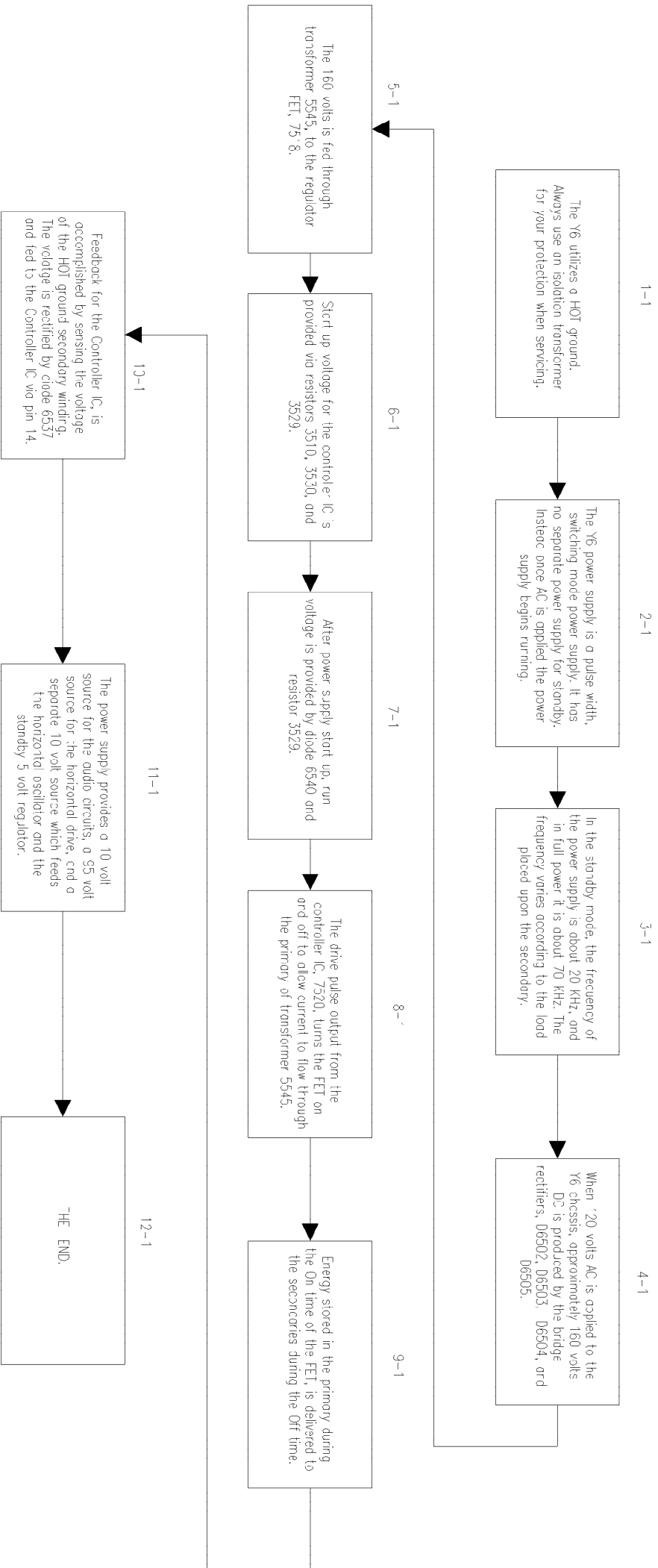
Print Date: 30/03/2007

Training Information

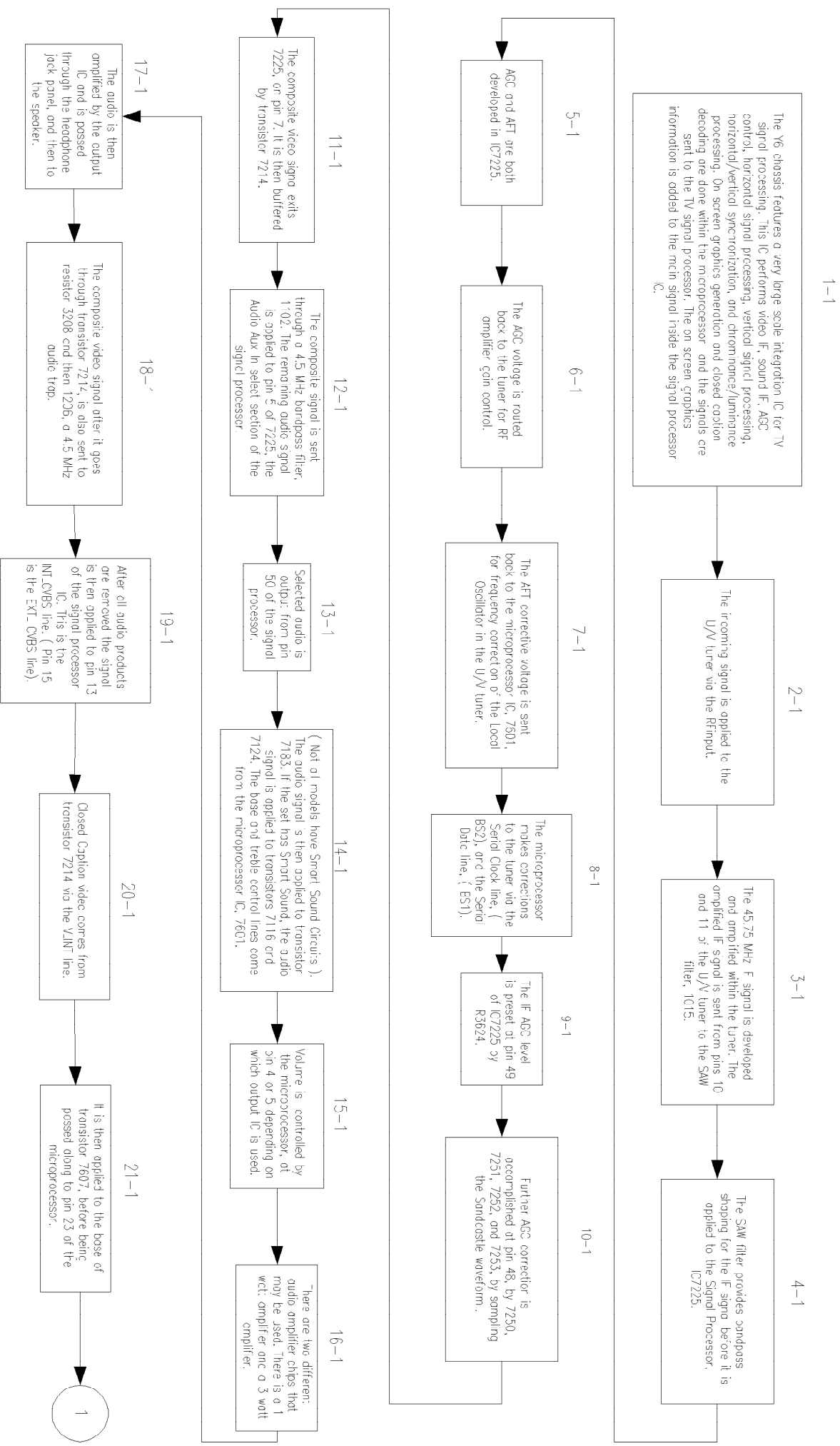
REFER TO SAFETY GUIDELINES

SAFETY NOTICE: ANY PERSON ATTEMPTING TO SERVICE THIS CHASSIS MUST FAMILIARIZE HIMSELF WITH THE CHASSIS AND BE AWARE OF THE NECESSARY SAFETY PRECAUTIONS TO BE USED WHEN SERVICING ELECTRONIC EQUIPMENT CONTAINING HIGH VOLTAGES.

CAUTION: USE A SEPARATE ISOLATION TRANSFORMER FOR THIS UNIT WHEN SERVICING



Y6
SIGNAL FLOW.



Philips Consumer Electronics

Technical Service Data

Service and Quality
Service Publications Dept.
One Philips Drive
P.O. Box 14810
Knoxville, TN 37914

Manual 7560

Model no.: 20LL27

First Publish: 03-30-2007

Rev. Date: 4-13-98

Print Date: 30/03/2007

Parts List

REFER TO SAFETY GUIDELINES

SAFETY NOTICE: ANY PERSON ATTEMPTING TO SERVICE THIS CHASSIS MUST FAMILIARIZE HIMSELF WITH THE CHASSIS AND BE AWARE OF THE NECESSARY SAFETY PRECAUTIONS TO BE USED WHEN SERVICING ELECTRONIC EQUIPMENT CONTAINING HIGH VOLTAGES.

CAUTION: USE A SEPARATE ISOLATION TRANSFORMER FOR THIS UNIT WHEN SERVICING

Y6 MAIN CHASSIS

2008	1000pF, 10%, Carbon.	4835	122	47004	2517	1000pF, 10%, Carbon.	4835	122	47004
2010	2200uF, 16V, Elect.	4835	124	47701	2518	330pF, 10%, 1kV, Cer.	4835	122	47632
2013	47pF, 5%, 50V, Carbon.	4835	122	47608	2520	82pF, 5%, 50V, Carbon.	4835	122	87593
2016	47uF, 20%, 25V, Elect.	4835	124	47708	2521	2200pF, 10%, 50V, Carbon.	4835	122	87544
2101	4700pF, 10%, 50V, Carbon	4835	122	87415	2522	2200pF, 10%, 50V, Carbon.	4835	122	87544
2102	82pF, 5%, 50V, Cer.	4835	122	47612	2524	470pF, 5%, 50V, Carbon.	4835	122	87451
2104	10uF, 20%, 50V, Elect.	4835	124	47499	2529	0.1uF, 50V, Carbon.	4835	122	87375
2105	10uF, 20%, 50V, Elect (Latam).	4835	124	47499	2530	1.0uF, 20%, 50V, Elect.	4835	121	47406
2106	2200pF, 10%, 50V, Cer (Latam).	4835	122	47007	2531	560pF, 400V, Plypro.	4835	121	47615
2108	56pF, 5%, 50V, Cer.	4835	122	47609	2532	1000pF, 10%, Carbon.	4835	122	47004
2110	0.1uF, 50V, Carbon.	4835	122	87375	2533	330pF, 5%, 50V, Carbon.	4835	122	87287
2111	470uF, 25V, Elect.	4835	124	47719	2534	1000pF, 5%, 50V, Carbon.	4835	122	87369
2116	0.033uF, 10%, 50V, Poly (Latam).	4835	121	47587	2537	0.1uF, 63V, Poly.	4835	121	47602
2117	0.01uF, 10%, 50V, Cer (Latam).	4835	122	87023	2540	100uF, 25V, Elect.	4835	121	47615
2120	0.22uF, 63V, Poly.	4835	121	47603	2541	3300pF, 5%, 50V, Poly.	4835	121	47591
2121	0.22uF, 25V, Carbon.	4835	122	87594	2545	4700pF, 250Vac, Cer.	4835	122	47636
2122	2200pF, 10%, 50V, Carbon (USA & Latam).	4835	122	87544	S 2550	1000pF, 10%, 1kV, Cer.	4835	122	47373
2124	0.1uF, 63V, Poly (Latam).	4835	121	47602	2551	47uF, 160V, Elect.	4835	124	47712
2126	330pF, 10%, 50V, Cer (Latam).	4835	122	47185	2552	470pF, 10%, 500V, Cer.	4835	122	47211
2127	330pF, 10%, 50V, Cer (Latam).	4835	122	47185	2560	1500pF, 10%, 50V, Carbon.	4835	122	87591
2130	22uF, 20%, 50V, Elect.	4835	124	47503	2561	2200uF, 16V, Elect.	4835	124	47701
2135	100uF, 50V, Elect (Latam).	4835	124	47563	2563	22uF, 20%, 50V, Elect.	4835	124	47503
2136	100uF, 50V, Elect (Latam).	4835	124	47563	2570	1000pF, 5%, 50V, Carbon.	4835	122	87369
2138	0.47uF, 63V, Poly (Latam).	4835	121	42008	2571	1000uF, 25V, Elect.	4835	124	47583
2208	0.047uF, 10%, 50V, Carbon.	4835	122	87503	2572	100pF, 5%, 50V, Carbon.	4835	122	87012
2212	0.1uF, 63V, Poly.	4835	121	47602	2602	47uF, 20%, 25V, Elect.	4835	124	47708
2213	0.22uF, 25V, Carbon.	4835	122	87594	2603	0.1uF, 50V, Carbon.	4835	122	87375
2221	0.1uF, 50V, Carbon.	4835	122	87375	2607	680pF, 5%, 50V, Carbon.	4835	122	87037
2222	2.2uF, 20%, 50V, Elect.	4835	124	47502	2608	1000pF, 50V, Carbon.	4835	122	87023
2224	100uF, 50V, Elect.	4835	124	47704	2610	470uF, 25V, Elect.	4835	124	47719
2228	0.1uF, 50V, Carbon.	4835	122	87375	2611	10uF, 20%, 50V, Elect.	4835	124	47499
2260	15pF, 5%, 50V, Carbon.	4835	122	87592	2620	820pF, 5%, 50V, Carbon.	4835	122	87589
2261	0.022uF, 10%, 50V, Carbon.	4835	122	87538	2621	100pF, 5%, 50V, Carbon.	4835	122	87012
2264	0.022uF, 10%, 50V, Carbon.	4835	122	87538	2622	100pF, 5%, 50V, Carbon.	4835	122	87012
2265	2.2uF, 20%, 50V, Elect.	4835	124	47502	2623	2200pF, 10%, 50V, Carbon.	4835	122	87538
2266	0.1uF, 50V, Carbon.	4835	122	87375	2630	10uF, 20%, 50V, Elect.	4835	124	47499
2270	0.1uF, 10%, 16V, Carbon.	4835	122	87595	2631	10uF, 20%, 50V, Elect.	4835	124	47499
2271	0.1uF, 10%, 16V, Carbon.	4835	122	87595	2632	10uF, 20%, 50V, Elect.	4835	124	47499
2272	3300pF, 10%, 50V, Carbon.	4835	122	87294	2633	10uF, 20%, 50V, Elect.	4835	124	47499
2273	0.1uF, 50V, Carbon.	4835	122	87375	2634	1.0uF, 20%, 50V, Elect.	4835	121	47406
2277	15pF, 5%, 50V, Carbon.	4835	122	87592	2635	47uF, 20%, 25V, Elect.	4835	124	47708
2280	0.047uF, 10%, 50V, Carbon.	4835	122	87503	2639	0.1uF, 50V, Carbon.	4835	122	87375
2284	0.047uF, 10%, 50V, Carbon.	4835	122	87503	2650	820pF, 5%, 50V, Carbon.	4835	122	87589
2285	0.047uF, 10%, 50V, Carbon.	4835	122	87503	2652	820pF, 5%, 50V, Carbon.	4835	122	87589
2290	0.1uF, 50V, Carbon.	4835	122	87375	2653	0.01uF, 10%, 50V, Carbon.	4835	122	87024
2291	470uF, 25V, Elect.	4835	124	47719	2660	1.0uF, 20%, 50V, Elect.	4835	121	47406
2400	2200pF, 10%, 50V, Carbon.	4835	122	87544	2662	820pF, 5%, 50V, Carbon.	4835	122	87589
2401	5600pF, 10%, 50V, Carbon.	4835	122	87295	2664	0.1uF, 10%, 50V, Carbon.	4835	122	87061
2402	390pF, 10%, 50V, Cer.	4835	122	47613	2666	0.1uF, 50V, Carbon.	4835	122	87375
2403	22uF, 20%, 50V, Elect (13").	4835	124	47503	2670	0.1uF, 5%, 50V, Carbon.	4835	122	87012
2403	100uF, 50V, Elect (19").	4835	124	47563	2671	100uF, 25V, Elect.	4835	121	47615
2404	22uF, 10%, 16V, Elect.	4835	124	47715	2674	100pF, 5%, 50V, Carbon.	4835	122	87012
2406	4700pF, 5%, 50V, Poly.	4835	121	47592	2679	1000pF, 10%, 50V, Cer.	4835	122	47004
2407	0.047uF, 10%, 50V, Poly (13").	4835	121	47588	2680	0.1uF, 50V, Carbon.	4835	122	87375
2407	0.1uF, 63V, Poly (19").	4835	121	47602	2681	0.1uF, 10%, 16V, Carbon.	4835	122	87595
2408	2200uF, 16V, Elect (13").	4835	124	47701	2682	27pF, 5%, 50V, Carbon.	4835	122	87381
2408	3300uF, 25V, Elect (19").	4835	124	47721	2683	27pF, 5%, 50V, Carbon.	4835	122	87381
2421	2700pF, 20%, 50V, Carbon.	4835	122	87502	2684	0.022uF, 10%, 50V, Carbon.	4835	122	87538
2422	1.0uF, 20%, 50V, Elect.	4835	121	47406	2687	220pF, 5%, 50V, Carbon.	4835	122	87376
2423	4700pF, 10%, 50V, Carbon.	4835	122	87415	2690	220pF, 5%, 50V, Carbon.	4835	122	87376
2424	0.1uF, 50V, Carbon.	4835	122	87375	2691	100pF, 5%, 50V, Carbon.	4835	122	87012
2425	22uF, 20%, 25V, Elect.	4835	124	47707	2692	100pF, 5%, 50V, Carbon.	4835	122	87012
2426	0.1uF, 63V, Poly.	4835	121	47602	2693	100pF, 5%, 50V, Carbon.	4835	122	87012
2427	4700pF, 10%, 50V, Carbon.	4835	122	87415	2694	0.1uF, 50V, Carbon.	4835	122	87375
2440	2200pF, 5%, 50V, Poly.	4835	121	47589	3010	1.0 ohm., 5%, 1/3W, MF.	4822	111	30483
2442	0.22uF, 25V, Carbon.	4835	122	87594	3011	100 ohm., 5%, 1/2W, MF.	4835	116	57684
2443	470uF, 25V, Elect.	4835	124	47719	3013	100 ohm., 5%, 1/2W, MF.	4835	116	57684
2444	1.0uF, 63V, Poly (19").	4835	121	47427	3106	10k, 5%, 1/10W, MF.	4835	111	37216
S 2445	0.011uF, 1.6kV, Plypro (19").	4835	121	47611	3111	10k, 5%, 1/10W, MF.	4835	111	37216
S 2445	8200pF, 1.6kV, Plypro (13").	4835	121	47614	3113	1.0k, 5%, 1/2W, MF.	4835	116	57685
2447	1000pF, 10%, 2kV, Cer (19").	4835	122	47634	3116	1.1k, 5%, 1/2W, MF.	4835	116	57688
S 2448	47uF, 160V, Elect.	4835	124	47713	3117	470 ohm, 5%, 1/2W, MF (Latam).	4835	116	57723
2449	220pF, 2kV, Cer.	4835	122	47634	3121	6.8k, 5%, 1/2W, MF.	4835	116	57736
2450	0.47uF, 250V, Plypro (13").	4835	121	47608	3122	2.2k, 5%, 1/2W, MF (Latam).	4835	111	37234
2450	0.56uF, 250V, Plypro (19").	4835	121	47609	3123	1.8k, 5%, 1/2W, MF (Latam).	4835	116	57702
2451	1.0uF, 63V, Plypro.	4835	121	47427	3124	100k, 5%, 1/2W, MF (Latam).	4835	116	57687
2452	470uF, 10V, Elect.	4835	124	47705	3125	15k, 5%, 1/10W, MF.	4835	111	37458
2453	1000uF, 35V, Elect.	4835	124	47498	3129	3.3k, 5%, 1/2W, MF (Latam).	4835	116	57714
2455	10uF, 20%, 50V, Elect.	4835	124	47499	3135	68 ohm, 5%, 1/2W, MF (Latam).	4835	116	57738
2460	0.068uF, 100V, Poly.	4835	121	47001	3136	68 ohm, 5%, 1/2W, MF (Latam).	4835	116	57738
2461	27pF, 5%, 50V, Cer.	4835	122	47607	3138	10k, 5%, 1/2W, MF (Latam).	4835	116	57686
2462	100pF, 10%, 2kV, Cer.	4835	122	47626	3139	4.7k, 5%, 1/2W, MF (Latam).	4835	116	57724
2470	22uF, 250V, Elect.	4835	124	47021	3140	75 ohm, 5%, 1/2W, MF (Latam).	4835	116	57739
2471	0.022uF, 5%, 50V, Poly.	4835	121	47594	3142	680 ohm, 5%, 1/2W, MF.	4835	116	57735
2500	0.47uF, 250V, Poly.	4835	121	47569	3144	22 ohm, 5%, 1/2W, MF.	4835	116	57708
2502	2200pF, 10%, 2kV, Cer.	4835	122	47624	3145	4.7k, 5%, 1/2W, MF.	4835	116	57724
2504	2200pF, 10%, 2kV, Cer.	4835	122	47624	3170	470 ohm, 5%, 1/2W, MF (Latam).	4835	116	57723
2505	2200pF, 10%, 2kV, Cer.	4835	122	47624	3188	1.0k, 5%, 1/10W, MF.	4822	051	10102
2508	220uF, 400V, Elect (Mult-Volt).	4835	124	47711	3206	180 ohm, 5%, 1/2W, MF.	4835	116	57701
2508	220uF, 250V, Elect (110V Mod).	4835	124	47718	3208	2.2k, 5%, 1/2W, MF.	4835	111	37234
2509	470pF, 10%, 1kV, Cer.	4835	122	47459	3210	100k, 5%, 1/2W, MF.	4835	116	57687
					3212	4.7k, 5%, 1/2W, MF.	4835	116	57724

S = Safety Part Be sure to use exact replacement part.

3213	100k, 5%, 1/10W, MF.	4835	111	37434	3525	33 ohm, 5%, 1/3W, MF.	4835	116	57718
3214	1.0k, 5%, 1/10W, MF.	4822	051	10102	3525	33 ohm, 5%, 1/2W, MF.	4835	116	57718
3219	2.7M ohm, 5%, 1/10W, MF.	4835	111	27049	3528	150 ohm, 5%, 1/2W, MF.	4835	116	57696
3239	1.8k, 5%, 1/2W, MF.	4835	116	57702	3529	4.7ohm, 5%, 1/2W, MF.	4835	110	47023
3240	47k, 5%, 1/10W, MF.	4835	111	37445	3530	3.9k, 5%, 1/2W, MF.	4835	116	57721
3242	1.0k, 5%, 1/10W, MF.	4822	051	10102	3532	5.6k, 5%, 1/10W, MF (U.S. & Latam)	4835	111	37376
3243	560 ohm, 5%, 1/2W, MF (19").	4835	116	57731	3532	0 ohm, MF (Mult-Volt Mod).	4835	111	27056
3244	100 ohm., 5%, 1/2W, MF (19").	4835	116	57684	3534	220k, 5%, 1/10W, MF.	4835	111	37235
3247	2.2k, 5%, 1/2W, MF.	4835	111	37234	3536	39k, 5%, 1/10W, MF.	4835	111	27051
3248	4.7k, 5%, 1/2W, MF.	4835	116	57724	3537	10k, 5%, 1/10W, MF.	4835	111	37216
3249	15k, 5%, 1/2W, MF.	4835	116	57698	3538	100k, 5%, 1/2W, MF.	4835	116	57687
3250	1.0k, 5%, 1/2W, MF.	4835	116	57685	3539	18k, 5%, 1/2W, MF.	4835	110	57187
3252	10k, 5%, 1/2W, MF.	4835	116	57686	3540	4.7k, Potentiometer.	4835	103	17004
3253	39k, 5%, 1/2W, MF.	4835	116	57722	3541	47 ohm, 5%, 2W, Metal Oxide.	4835	116	67238
3254	4.7k, 5%, 1/2W, MF.	4835	116	57724	3542	0.68 ohm, 5%, 1W, Metal Oxide.	4835	116	67255
3255	1.0k, 5%, 1/2W, MF.	4835	116	57685	3545	2.2 ohm, 5%, 1/2W, MF.	4835	116	57653
3256	1.0k, 5%, 1/10W, MF.	4822	051	10102	3546	4.7 ohm, 5%, 1/2W, MF.	4835	116	57009
3257	1.0k, 5%, 1/10W, MF.	4822	051	10102	3555	68 ohm, 5%, 2W, Metal Oxide.	4835	116	57573
3258	3.3k, 5%, 1/2W, MF.	4835	116	57714	3555	68 ohm, 5%, 3W, Metal Oxide.	4835	116	67245
3259	1.0k, 5%, 1/10W, MF.	4822	051	10102	3600	8.2k, 5%, 1/10W, MF.	4835	111	37448
3261	22k, 5%, 1/10W, MF.	4835	111	37441	3602	2.2k, 5%, 1/8W, RSIP.	4835	111	97049
3262	4.7k, 5%, 1/2W, MF.	4835	116	57724	3603	2.2k, 5%, 1/8W, RSIP.	4835	111	97046
3263	15k, 5%, 1/2W, MF.	4835	116	57698	3604	10k, 5%, 1/10W, MF.	4835	111	37216
3264	10k, Potentiometer.	4835	103	17002	3605	10k, 5%, 1/10W, MF.	4835	111	37216
3270	15k, 5%, 1/10W, MF.	4835	111	37248	3606	10k, 5%, 1/10W, MF.	4835	111	37216
3271	4.7k, 5%, 1/2W, MF.	4835	116	57724	3607	100 ohm, 5%, 1/10W, MF.	4835	111	37432
3273	100k, 5%, 1/10W, MF.	4835	111	37434	3608	1.0k, 5%, 1/10W, MF.	4822	051	10102
3275	8.2k, 5%, 1/10W, MF.	4835	111	37448	3609	10k, 5%, 1/10W, MF.	4835	111	37216
3280	1.0k, 5%, 1/10W, MF.	4822	051	10102	3610	27k, 5%, 1/10W, MF.	4835	111	37442
3400	4.7k, 5%, 1/2W, MF.	4835	116	57724	3612	22k, 5%, 1/10W, MF.	4835	111	37441
3401	2.2k, 5%, 1/2W, MF.	4835	111	37234	3617	12k, 5%, 1/2W, MF.	4835	116	57692
3402	2.2k, 5%, 1/2W, MF.	4835	111	37234	3618	15k, 5%, 1/2W, MF.	4835	116	57698
3403	390 ohm, 5%, 2W, Metal Oxide (19").	4835	116	67232	3619	8.2k, 5%, 1/10W, MF.	4835	111	37448
3404	1.5k, 5%, 1/2W, MF.	4835	116	57697	3620	100 ohm., 5%, 1/2W, MF.	4835	116	57684
3405	180 ohm, 5%, 1/2W, MF (19").	4835	116	57701	3621	100 ohm, 5%, 1/10W, MF.	4835	111	37432
3405	68 ohm, 5%, 1/2W, MF (13").	4835	116	57738	3622	100 ohm, 5%, 1/10W, MF.	4835	111	37432
3406	2.0k, 5%, 1/2W, MF (13").	4835	116	57703	3623	10k, 5%, 1/10W, MF.	4835	111	37216
3406	2.2k, 5%, 1/2W, MF (19").	4835	111	37234	3624	100 ohm, 5%, 1/10W, MF.	4835	111	37432
3407	220 ohm, 5%, 1/2W, MF (19").	4835	116	57705	3625	100 ohm, 5%, 1/10W, MF.	4835	111	37432
3407	390 ohm, 5%, 1/2W, MF (13").	4835	116	57719	3626	3.9k, 5%, 1/10W, MF.	4835	111	37254
3409	820 ohm, 5%, 1W, Metal Oxide (13").	4835	116	67256	3627	3.9k, 5%, 1/10W, MF.	4835	111	37254
3410	330 ohm, Potentiometer.	4835	103	17003	3628	8.2k, 5%, 1/10W, MF.	4835	111	37448
3411	27k, 5%, 1/2W, MF (13").	4835	116	57712	3629	8.2k, 5%, 1/10W, MF.	4835	111	37448
3411	33k, 5%, 1/2W, MF (19").	4835	116	57715	3630	15k, 5%, 1/10W, MF.	4835	111	37248
3412	22k, 5%, 1/2W, MF.	4835	116	57706	3631	47k, 5%, 1/10W, MF.	4835	111	37445
3414	2.2k, 5%, 1/2W, MF.	4835	116	57707	3632	10k, 5%, 1/10W, MF.	4835	111	37216
3418	2.2k, 5%, 1/2W, MF (19").	4835	116	57707	3633	33k, 5%, 1/10W, MF.	4835	111	37248
3418	3.3k, 5%, 1/2W, MF (13").	4835	116	57717	3634	47k, 5%, 1/10W, MF.	4835	111	37445
3420	10k, Potentiometer.	4835	103	17002	3635	150k, 5%, 1/10W, MF (13").	4835	111	27045
3421	820k, 5%, 1/10W, MF.	4835	111	37467	3636	47k, 5%, 1/10W, MF.	4835	111	37445
3422	15k, 5%, 1/10W, MF.	4835	111	37248	3638	1.8k, 5%, 1/2W, MF.	4835	116	57702
3424	100 ohm, 5%, 2W, Metal Oxide.	4835	116	67239	3639	5.6k, 5%, 1/10W, MF.	4835	111	37376
3425	3.3M ohm, 5%, 1/4W, MF.	4835	116	57746	3640	8.2k, 5%, 1/2W, MF (Latam w/Smrt Snd).	4835	116	57742
3427	8.2k, 5%, 1/10W, MF.	4835	111	37448	3641	8.2k, 5%, 1/2W, MF (Latam w/Smrt Snd).	4835	116	57742
3428	820 ohm, 5%, 1/10W, MF.	4835	111	37466	3642	10k, 5%, 1/10W, MF.	4835	111	37216
3440	1.0k, 5%, 1/10W, MF.	4822	051	10102	3650	1.0k, 5%, 1/2W, MF.	4835	116	57685
3441	68k, 5%, 1/10W, MF.	4835	111	37273	3651	100 ohm, 5%, 1/10W, MF.	4835	111	37432
3442	22 ohm, 5%, 1/2W, MF.	4835	116	57708	3652	1.0M ohm, 5%, 1/4W, Carbon.	4835	110	57374
3443	560 ohm, 5%, 1/10W, MF.	4835	111	27054	3653	4.7k, 5%, 1/2W, MF.	4835	116	57724
3444	10k, 5%, 3W, Metal Oxide.	4835	116	67247	3654	8.2k, 5%, 1/2W, MF.	4835	116	57742
S 3445	10 ohm., 5%, 2W, Metal Oxide.	4835	116	67236	3655	100 ohm., 5%, 1/2W, MF.	4835	116	57684
S 3446	680 ohm, 5%, 1/2W, MF.	4835	116	57735	3656	47k, 5%, 1/2W, MF.	4835	116	57725
S 3450	3.9 ohm., 5%, 1/3W, MF.	4835	116	57666	3657	100 ohm., 5%, 1/2W, MF.	4835	116	57684
3451	1.0 ohm., 5%, 1/3W, MF.	4822	111	30483	3658	220 ohm, 5%, 1/10W, MF.	4835	111	37371
S 3454	1.8k, 5%, 1/2W, MF (13").	4835	116	57668	3659	470 ohm, 1%, 1/6W, MF.	4835	116	57681
S 3454	820 ohm., 5%, 1/2W, MF (19").	4835	116	57672	3660	820 ohm, 5%, 1/10W, MF.	4835	111	37466
3456	220k, 5%, 1/4W, MF.	4835	110	57208	3661	4.7k, 5%, 1/10W, MF.	4835	111	27052
3460	22k, 5%, 1/2W, MF (19").	4835	116	57706	3662	1.0k, 5%, 1/2W, MF.	4835	116	57685
3460	27k, 5%, 1/2W, MF (13").	4835	116	57712	3663	680 ohm, 5%, 1/10W, MF.	4835	111	37271
3461	12k, 5%, 1/2W, MF.	4835	116	57692	3664	6.8k, 5%, 1/10W, MF.	4835	111	37272
3462	220k, 5%, 1/2W, MF.	4835	116	57018	3665	220 ohm, 5%, 1/10W, MF.	4835	111	37371
3463	12k, 5%, 1/2W, MF.	4835	116	57692	3666	27k, 5%, 1/10W, MF.	4835	111	37442
S 3470	4R7, 5%, 1/2W, MF.	4835	110	47023	3667	2.2k, 5%, 1/10W, MF.	4835	111	37234
3471	33 ohm, 5%, 2W, Metal Oxide.	4835	116	67237	3668	4.7k, 5%, 1/2W, MF.	4835	116	57724
3480	100 ohm, 5%, 2W, Metal Oxide.	4835	116	67239	3670	100 ohm., 5%, 1/2W, MF.	4835	116	57684
3499	1.0 ohm., 5%, 1/3W, MF.	4822	111	30483	3673	430 ohm, 1%, 1/6W, MF.	4835	116	57679
3500	275VAC, Dependent Resistor.	4835	130	87143	3674	10k, 5%, 1/2W, MF.	4835	116	57686
3501	470 ohm, 20%, 1/2W, Carbon.	4835	110	47212	3677	4.7k, 5%, 1/2W, MF.	4835	116	57724
3502	4.7 ohm, 5%, 1/2W, MF.	4835	116	57009	3678	100k, 5%, 1/2W, MF.	4835	116	57687
3503	10 ohm, 120Vac, PTC.	4835	116	47001	3680	47 ohm, 5%, 1/2W, MF.	4835	116	57727
3504	9 ohm, 30%, 200Vac, PTC (Mult-Volt).	4835	116	47014	3681	10k, 5%, 1/10W, MF.	4835	111	37216
3506	2.2 ohm, 5%, 5W, Wire Wound.	4835	112	27037	3682	10k, 5%, 1/10W, MF.	4835	111	37216
3507	220 ohm, 5%, 3W, Metal Oxide.	4835	116	67246	3683	100k, 5%, 1/2W, MF.	4835	116	57687
3508	220 ohm, 5%, 3W, Metal Oxide.	4835	116	67246	3684	10k, 5%, 1/10W, MF.	4835	111	37216
3509	12k, 5%, 3W, Metal Oxide.	4835	116	67234	3685	47k, 5%, 1/2W, MF.	4835	116	57725
3510	22k, 5%, 3W, Metal Oxide (13").	4835	116	67249	3686	15k, 5%, 1/10W, MF.	4835	111	37248
3510	33k, 5%, 3W, Metal Oxide (19").	4835	116	67251	3690	1.8k, 5%, 1/10W, MF.	4835	111	37231
3513	0 ohm, MF.	4835	111	27056	3694	5.6k, 5%, 1/10W, MF.	4835	111	37376
3517	10k, 5%, 1/10W, MF.	4835	111	37216	3695	5.6k, 5%, 1/10W, MF.	4835	111	37376
3518	0.33 ohm, 5%, 3W, Metal Oxide.	4835	116	67243	3696	5.6k, 5%, 1/10W, MF.	4835	111	37376
3520	82k, 5%, 1/10W, MF.	4835	111	37277	4200	0 ohm, MF.	4835	111	27056
3521	330 ohm, 5%, 1/2W, MF.	4835	116	57713	4226	0 ohm, MF.	4835	111	27056

S = Safety Part Be sure to use exact replacement part.

4280	0 ohm, MF.	4835	111	27056	7253	Transistor BC557B.	4835	130	47409
4284	0 ohm, MF.	4835	111	27056	7269	Transistor BC847B.	4822	130	60511
4289	0 ohm, MF.	4835	111	27056	7401	IC TDA3653B/N2, Vertical Out.	4822	209	60955
4290	0 ohm, MF.	4835	111	27056	7440	Transistor BC847B, Horiz. Driver.	4822	130	60511
4293	0 ohm, MF.	4835	111	27056	7441	Transistor BC368, Horiz. Driver.	4835	130	47382
4294	0 ohm, MF.	4835	111	27056	7445	Transistor BUT11AX, Hot.	4835	130	48117
4296	0 ohm, MF.	4835	111	27056	7480	Transistor BC337 25, 8V Regulator.	4835	130	48113
4360	0 ohm, MF.	4835	111	27056	7500	IC MC7805CT, 5V Regulator.	4835	209	87486
4695	0 ohm, MF.	4835	111	27056	7518	Transistor STP6NA60FI, Regulator.	4835	130	48109
4696	0 ohm, MF.	4835	111	27056	7520	IC MC44603A, Controller.	4835	209	88537
4800	0 ohm, MF.	4835	111	27056	7601	P83C269AAR/022, uP (Philips/Magnvx USA).	4835	209	88608
4801	0 ohm, MF.	4835	111	27056	7601	P83C269AAR/023, uP (LATAM-Export).	4835	209	88576
5014	0.68uH, Coil	4835	157	67058	7607	Transistor BC847B, CC Video.	4822	130	60511
5206	12uH, Coil	4835	157	67075	7608	Transistor BC847B.	4822	130	60511
5209	100uH, Coil.	4835	157	67077	7609	Transistor BC857B.	5322	130	60508
5260	45.75MH, Coil.	4835	157	67081	7620	IC ST24W04B1, Memory	4835	209	88532
5286	12uH, Coil	4835	157	67075	7650	Transistor BC847B.	4822	130	60511
5287	12uH, Coil	4835	157	67075	7668	Transistor BC847B.	4822	130	60511
5288	12uH, Coil	4835	157	67075	7677	Transistor BC847B.	4822	130	60511
5370	2.2MH, Coil (13").	4835	157	67063	7681	Transistor BC847B.	4822	130	60511
5442	4.7uH, Coil.	4835	157	67065	7682	Transistor BC847B.	4822	130	60511
5445	Flyback Transformer.	4835	140	67166	1000	Tuner UV1336/F.	4835	210	47096
5451	33uH, Coil	4835	157	67055	1015	Saw Filter 45M75M1962L	4835	153	97022
5456	100uH, Coil.	4835	157	67047	1102	Cer Filter 4M5SFSHBP B.	4835	152	17013
5500	Line Filter.	4835	152	17012	1206	Cer Filter 4M5TPSMB B.	4835	154	17001
5516	100MH, Coil.	4835	157	67078	1277	Crystal 3M579 18P.	4835	242	77276
5540	4.7uH, Coil.	4835	157	67057	132	IC, Spring (00.5) (Latam).	3135	011	00710
S 5545	Transformer SMPS ER35 B.	4835	140	67171	133	Shield f/Bimos IC.	3135	011	01000
5550	Coil	4835	157	67085	143	Heaksink f/SOPS.	3135	011	00670
5551	Coil	4835	157	67052	145	Shield f/uP IC	3135	011	00640
5552	Coil	4835	157	67085	148	Audio Heatsink (Mult-Volt Mod)	3135	011	00600
5553	100MH, Coil.	4835	157	67078	150	Line Heatsink.	3135	011	01020
5570	100MH, Coil(3Watt Stereo)	4835	157	67078	168	Heatsink f/Diode	3135	011	00790
5571	Coil	4835	157	67068	1060	Switch	4835	280	47042
5572	Coil (1Watt Stereo)	4835	157	67065	1061	Switch	4835	280	47042
5573	100MH, Coil.	4835	157	67078	1062	Switch	4835	280	47042
5601	6.8uH, Coil.	4835	157	67072	1063	Switch	4835	280	47042
5620	6.8uH, Coil.	4835	157	67072	1064	Switch	4835	280	47042
5681	2.2MH, Coil.	4835	157	67063	1080	Relay Driver, 12V G5P1A B (19").	4835	280	47043
5681	6.8uH, Coil.	4835	157	67066	1510	Led holder	3135	014	01300
5683	8.2uH, Coil.	4835	157	67067	1670	IR Receiver GP1U28QP	4835	219	47286
5690	6.8uH, Coil.	4835	157	67072	1681	Crystal 12M 20P B.	4835	122	97106
6110	Diode 1N4148	4835	130	37048	M19	2 Pin board Connector.	2422	025	14668
6111	Diode 1N4148	4835	130	37048	M1A	Solder Tag	2422	015	18601
6144	Zener BZX79 8.2V (Latam)	4835	130	37503	M1B	Solder Tag	2422	015	18601
6251	Diode 1N4148	4835	130	37048	M2A	1 Pin Board Connector.	3135	010	00470
6402	Diode 1N4148	4835	130	37048	M2B	1 Pin Board Connector.	3135	010	00470
6403	Diode BYD33D	4835	130	37009	M3	1 Pin Cinch Connector	3135	010	00470
6424	Zener BZX79 8.2V	4835	130	37503	M30	2 Pin Board Connector (Latam).	2422	026	04619
6440	Diode BYD33D	4835	130	37009	M4	2 Pin Board Connector.	2422	025	12667
6441	Diode BYD33D	4835	130	37009	M5A	1 Pin Board Connector.	3135	010	00470
6443	Diode BYD33D	4835	130	37009	M5B	1 Pin Board Connector.	3135	010	00470
6444	Zener BZX79.	4835	130	37911	3016	Buss Wire.	0322	179	00003
6445	Diode BYD33M	4835	130	37012	L4	1 Pin Board Connector.	3135	010	00470
6449	Diode BYD33J	4835	130	37094	S 1449	Fuse T 400MA	4835	253	97159
6451	Diode 1N4148	4835	130	37048	S 1500	Fuse T 2Amp, IEC (U.S. & Latam).	4835	253	97163
6454	Diode BYD33D	4835	130	37009	S 1500	Fuse T 4Amp, IEC (Mult-Volt Mod)	4835	253	97165
6461	Diode 1N4148	4835	130	37048	S 1571	Fuse T 1A.	4835	253	97162
6464	Diode 1N4148	4835	130	37048	S 1572	Fuse T 630MA	4835	253	97161
6470	Diode BYD33J	4835	130	37094					
6480	Zener BZX79 8.2V	4835	130	37918					
6502	Diode 1N5062	4822	130	41275	Y6 CRT BOARD				
6503	Diode 1N5062	4822	130	41275	2301	0.1uF, 63V, Poly	4835	121	47602
6504	Diode 1N5062	4822	130	41275	2304	560pF, 10%, 50V, Cer(13").	4835	122	47615
6505	Diode 1N5062	4822	130	41275	2304	680pF, 10%, 50V, Cer(19").	4835	122	47187
6507	Diode 1N5062	4822	130	41275	2324	560pF, 10%, 50V, Cer	4835	122	47615
6508	Diode 1N5062	4822	130	41275	2344	560pF, 10%, 50V, Cer(13").	4835	122	47615
6510	Zener BZX79 (Mult-Volt Mod).	4835	130	37282	2344	680pF, 10%, 50V, Cer(19").	4835	122	47187
6537	Diode BAV21.	4822	130	30842	2370	0.1uF, 250V, Poly.	4835	121	47278
6538	Diode BAV21.	4822	130	30842	2373	0.033uF, 630V, Poly.	4835	121	47605
6540	Diode BAV21.	4822	130	30842	3300	2.2k, Potentiometer, Red Drive	5322	100	11541
6550	Diode BYM36C	4835	130	37773	3303	390 ohm, 5%, 1/2W, MF (19").	4835	116	57719
6560	Diode BYD33D	4835	130	37009	3303	470 ohm, 5%, 1/2W, MF (13").	4835	116	57723
6570	Diode BYV27 200.	4835	130	37463	3304	12 ohm, 5%, 1/10W, MF (19").	4835	111	27044
6600	Zener BZX79 5.6V	4835	130	37007	3304	18 ohm, 5%, 1/10W, MF (13").	4835	111	27046
6610	Zener BZX79.	4835	130	37904	3310	4.7k, Potentiometer, Red Cutoff.	4835	103	17006
6651	Zener BZX79 9.1V	4835	130	37008	3311	470 ohm, 5%, 1/2W, MF (19").	4835	116	57723
6653	Zener Diode.	4835	130	37907	3311	560 ohm, 5%, 1/2W, MF (13").	4835	116	57731
6654	Zener BZX79 9.1V	4835	130	37008	3312	100 ohm., 5%, 1/2W, MF	4835	116	57684
6663	LED LTL 307P	4835	130	97096	3313	100 ohm., 5%, 1/2W, MF	4835	116	57684
7116	Transistor BC547B (Latam).	4835	130	47055	3314	15k, 5%, 3W, Metal Oxide	4835	116	67248
7120	IC TDA7056B/N1, Aud Out (Mult-Volt).	4835	209	88474	3315	1.5k, 20%, 1/2W, Carbon.	4835	110	47034
7121	IC TDA7052B/N1, Aud Out (Non Mult-Volt).	4835	209	88542	3321	680 ohm, 5%, 1/2W, MF.	4835	116	57735
7124	Transistor BC547B (Latam).	4835	130	47055	3322	1.5k, 5%, 1/2W, MF	4835	116	57697
7183	Transistor BC547B.	4835	130	47055	3323	390 ohm, 5%, 1/2W, MF (19").	4835	116	57719
7214	Transistor BC857B.	5322	130	60508	3323	470 ohm, 5%, 1/2W, MF (13").	4835	116	57723
7215	Transistor BC547B.	4835	130	47055	3324	33 ohm, 5%, 1/10W, MF (13").	4835	220	17028
7225	IC TDA8363C/N5, TV Signal Processor.	4835	209	88545	3324	56 ohm, 5%, 1/10W, MF (19").	4835	111	27058
7240	Transistor BC847B.	4822	130	60511	3330	4.7k, Potentiometer, Green Cutoff.	4835	103	17006
7250	Transistor BC557B.	4835	130	47409	3331	470 ohm, 5%, 1/2W, MF (19").	4835	116	57723
7251	Transistor BC557B.	4835	130	47409	3331	560 ohm, 5%, 1/2W, MF (13").	4835	116	57731
7252	Transistor BC547B.	4835	130	47055	3332	100 ohm., 5%, 1/2W, MF	4835	116	57684
					3333	100 ohm., 5%, 1/2W, MF	4835	116	57684

S = Safety Part Be sure to use exact replacement part.

	3334	15k, 5%, 3W, Metal Oxide	4835	116	67248
	3335	1.5k, 20%, 1/2W, Carbon.	4835	110	47034
	3340	2.2k, Potentiometer, Blue Drive.	5322	100	11541
	3343	390 ohm, 5%, 1/2W, MF (19").	4835	116	57719
	3343	470 ohm, 5%, 1/2W, MF (13").	4835	116	57723
	3344	10 ohm, 5%, 1/2W, MF (19").	4835	116	57097
	3344	15 ohm, 5%, 1/2W, MF (13").	4835	116	57699
	3350	4.7, Potentiometer, Green Drive.	4835	103	17006
	3351	470 ohm, 5%, 1/2W, MF (19").	4835	116	57723
	3351	560 ohm, 5%, 1/2W, MF (13").	4835	116	57731
	3352	100 ohm., 5%, 1/2W, MF	4835	116	57684
	3353	100 ohm., 5%, 1/2W, MF	4835	116	57684
	3354	15k, 5%, 3W, Metal Oxide	4835	116	67248
	3355	1.5k, 20%, 1/2W, Carbon.	4835	110	47034
	3357	820 ohm, 5%, 1/10W, MF	4835	111	37466
	3360	330 ohm, 5%, 1/10W, MF (19").	4835	111	37443
	3360	390 ohm, 5%, 1/10W, MF (13").	4835	111	37253
	3361	3.3k, 5%, 1/2W, MF	4835	116	57714
	3362	680 ohm, 5%, 1/10W, MF	4835	111	37271
S	3370	10 ohm, 5%, 1/2W, MF	4835	116	57097
S	3371	1.0 ohm., 5%, 1/3W, MF (19").	4822	111	30483
S	3371	2.2 ohm, 5%, 1/3W, MF (13").	4822	052	10228
S	3372	1.0 ohm., 5%, 1/3W, MF (19").	4822	111	30483
S	3372	2.2 ohm, 5%, 1/3W, MF (13").	4822	052	10228
	3374	1.5k, 20%, 1/2W, Carbon.	4835	110	47034
	5370	3.3uH, Coil (19").	4835	157	67061
	5370	10uH, Peaking Coil (13").	4835	157	67068
	6310	Zener BZX79 4.7V	4835	130	37005
	6314	Diode BAV21.	4822	130	30842
	6330	Zener BZX79 4.7V	4835	130	37005
	6334	Diode BAV21.	4822	130	30842
	6350	Zener BZX79 4.7V	4835	130	37005
	6354	Diode BAV21.	4822	130	30842
	7300	Transistor BC547B, Red Drive	4835	130	47055
	7310	Transistor BF422, Red Out.	4822	130	41782
	7320	Transistor BC547B, Green Drive	4835	130	47055
	7330	Transistor BF422, Green Out.	4822	130	41782
	7340	Transistor BC547B, Blue Drive.	4835	130	47055
	7350	Transistor BF422, Blue Out	4822	130	41782
	7360	Transistor BC557B, Bias.	4835	130	47409
L5		9 Pin Board Connector (13").	2422	500	80034
L6		10 Pin Board Connector (19").	2422	500	80038
	9370	Buss Wire (19").	0322	179	00003

Service and Quality
Service Publications Dept.
One Philips Drive
P.O. Box 14810
Knoxville, TN 37914

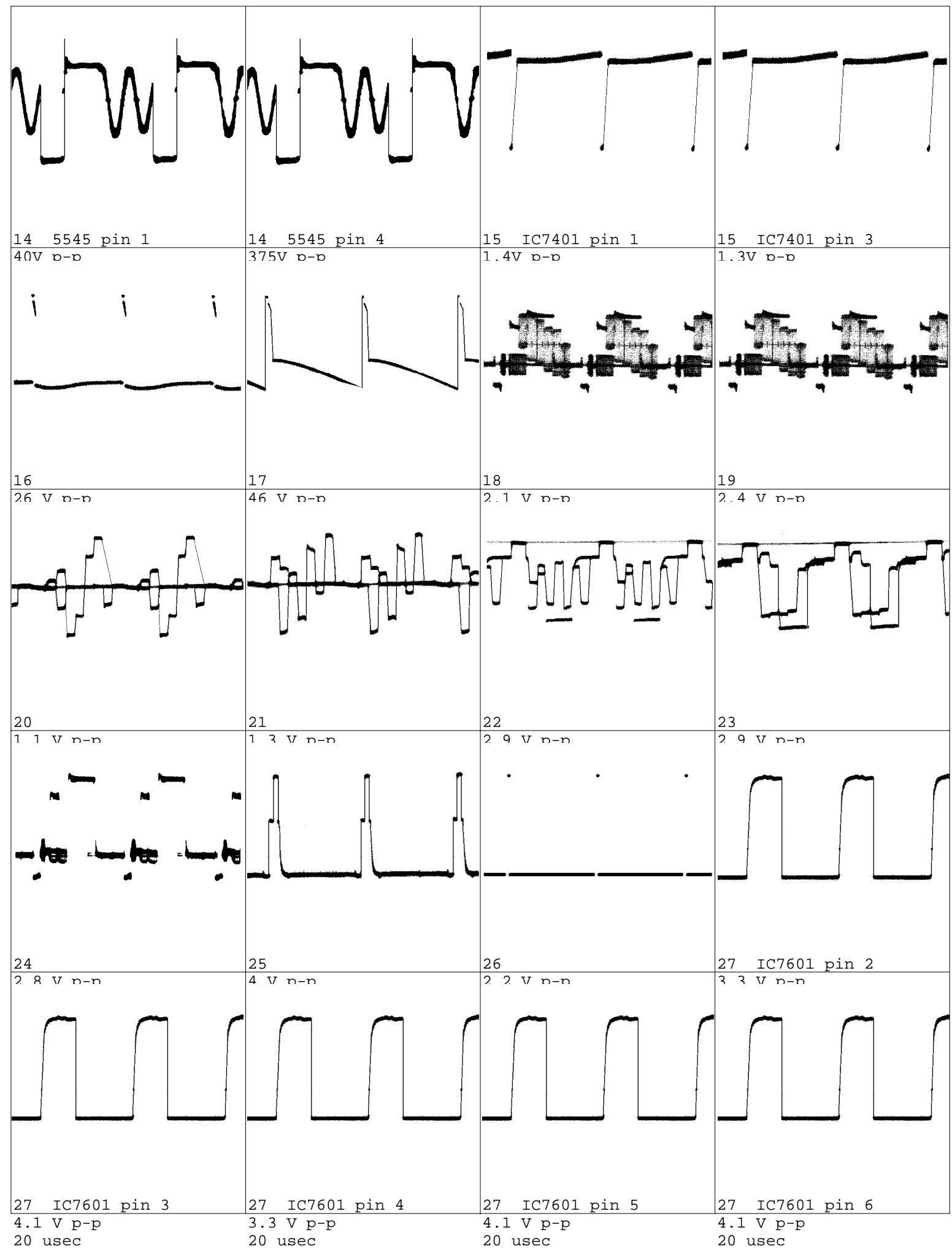
Scope Patterns

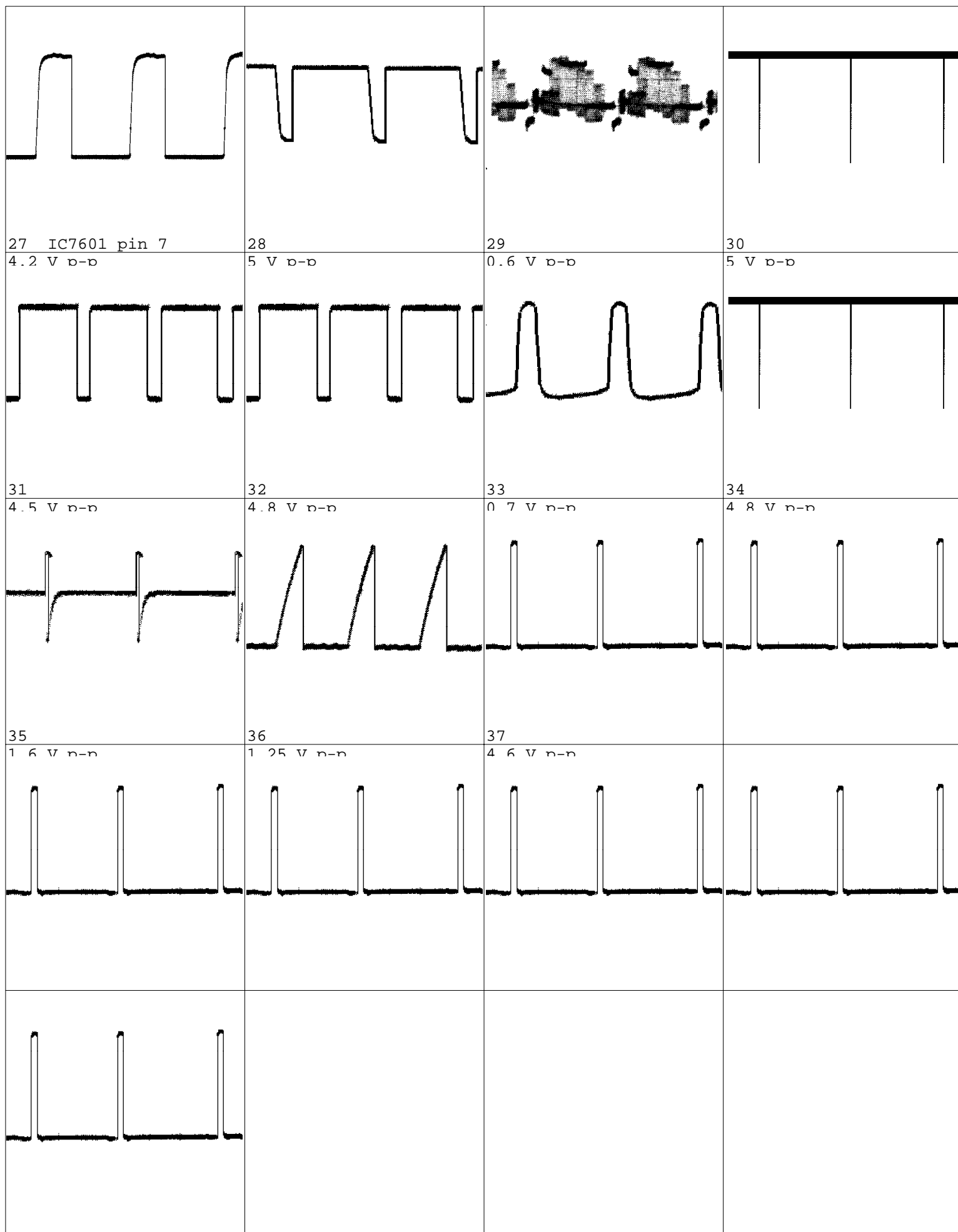
REFER TO SAFETY GUIDELINES

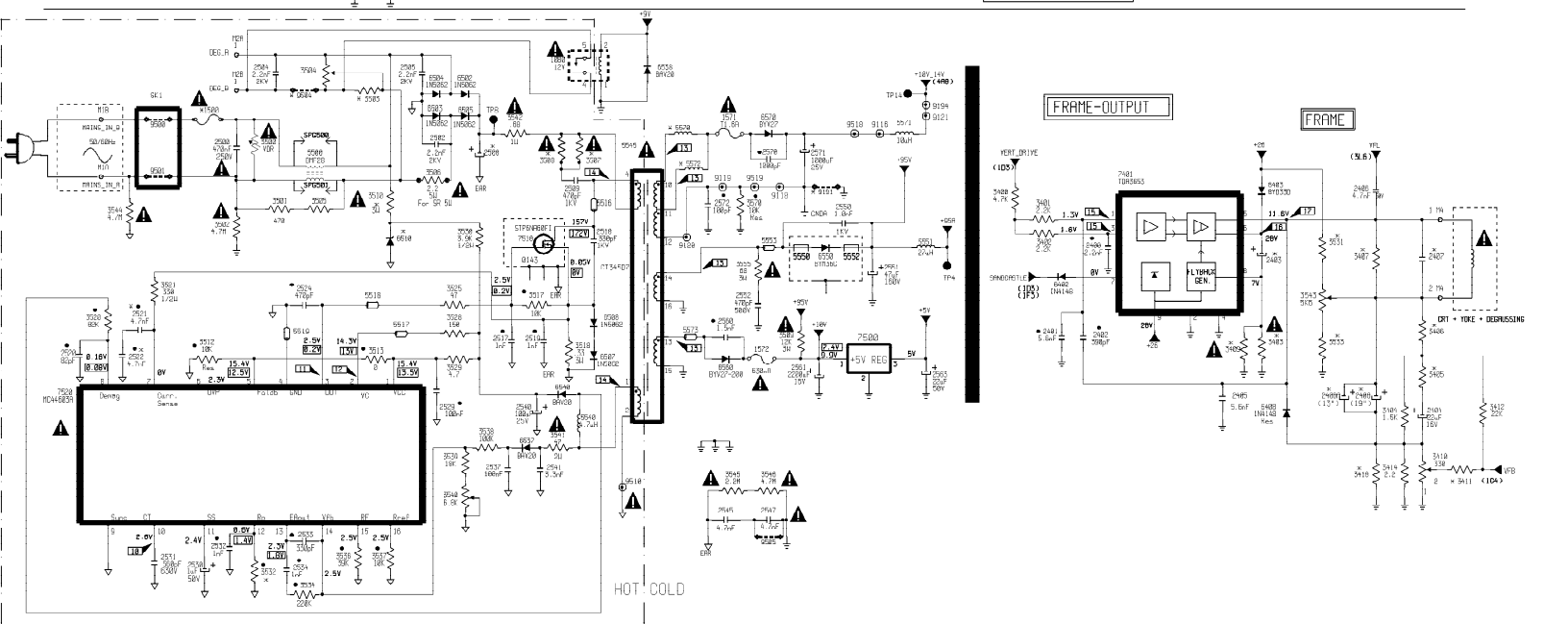
SAFETY NOTICE: ANY PERSON ATTEMPTING TO SERVICE THIS CHASSIS MUST FAMILIARIZE HIMSELF WITH THE CHASSIS AND BE AWARE OF THE NECESSARY SAFETY PRECAUTIONS TO BE USED WHEN SERVICING ELECTRONIC EQUIPMENT CONTAINING HIGH VOLTAGES.

CAUTION: USE A SEPARATE ISOLATION TRANSFORMER FOR THIS UNIT WHEN SERVICING









TUNER/SAW FILTER IF VIDEO CHROMA

