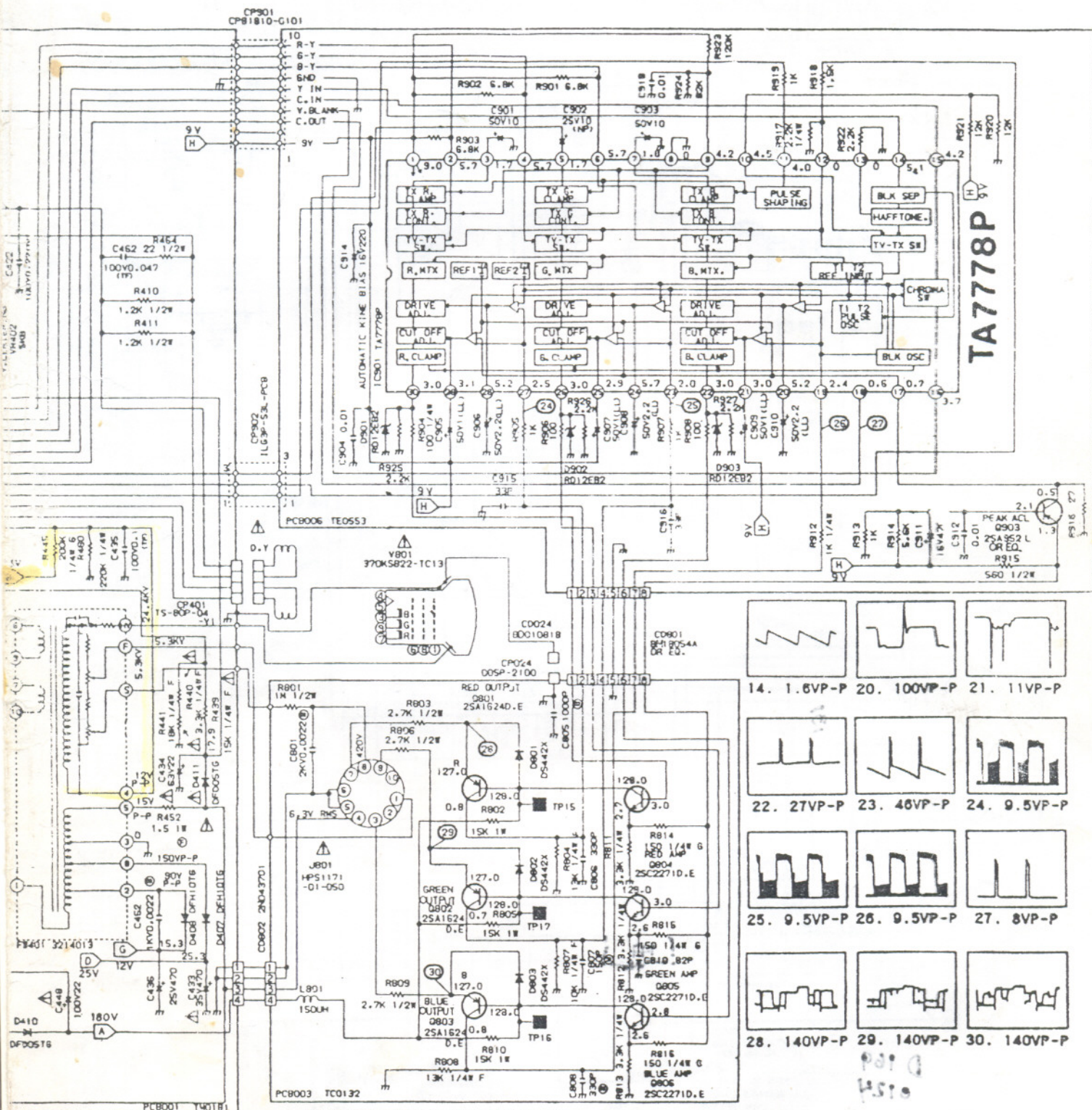


POWER SUPPLY

BROKSONIC Mod. CTVG 4563 CTC



RAM IS THE LATEST AT THE TIME
JECT TO CHANGE WITHOUT NOTICE.

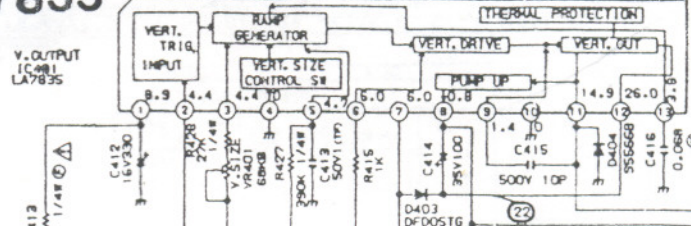
NOTE: F, G, H, I, AND J MARKED AROUND THE PARTS
IN THE SCHEMATIC DIAGRAM INDICATE
THE FOLLOWING ERROR RATE.
F 41X, G 42X, H 43X, I 44X, J 45X

DEFLECTION SCHEMATIC DIAGRAM

1-9866

C<

LA7835

V. OUTPUT
IC 981
LA7835

TO MIC/IF

D(O)

TO MIC/IF

 TS
H. BLANK
ON SCREEN
V. PLUSE

TO CHROMA

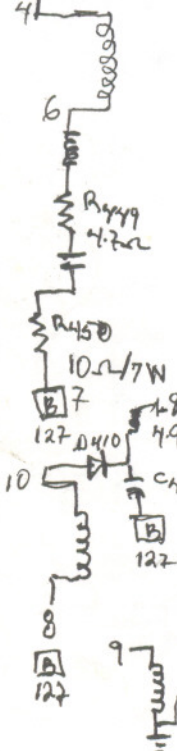
 V. OUT
C. IN
C. OUT
ABL
AFC

F

 Y IN
B-Y
G-Y
R-Y

 X-RAY
H. OUT
HEATER
H. BLANK

SHR

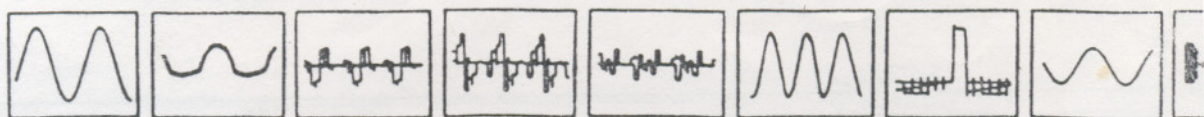


C<

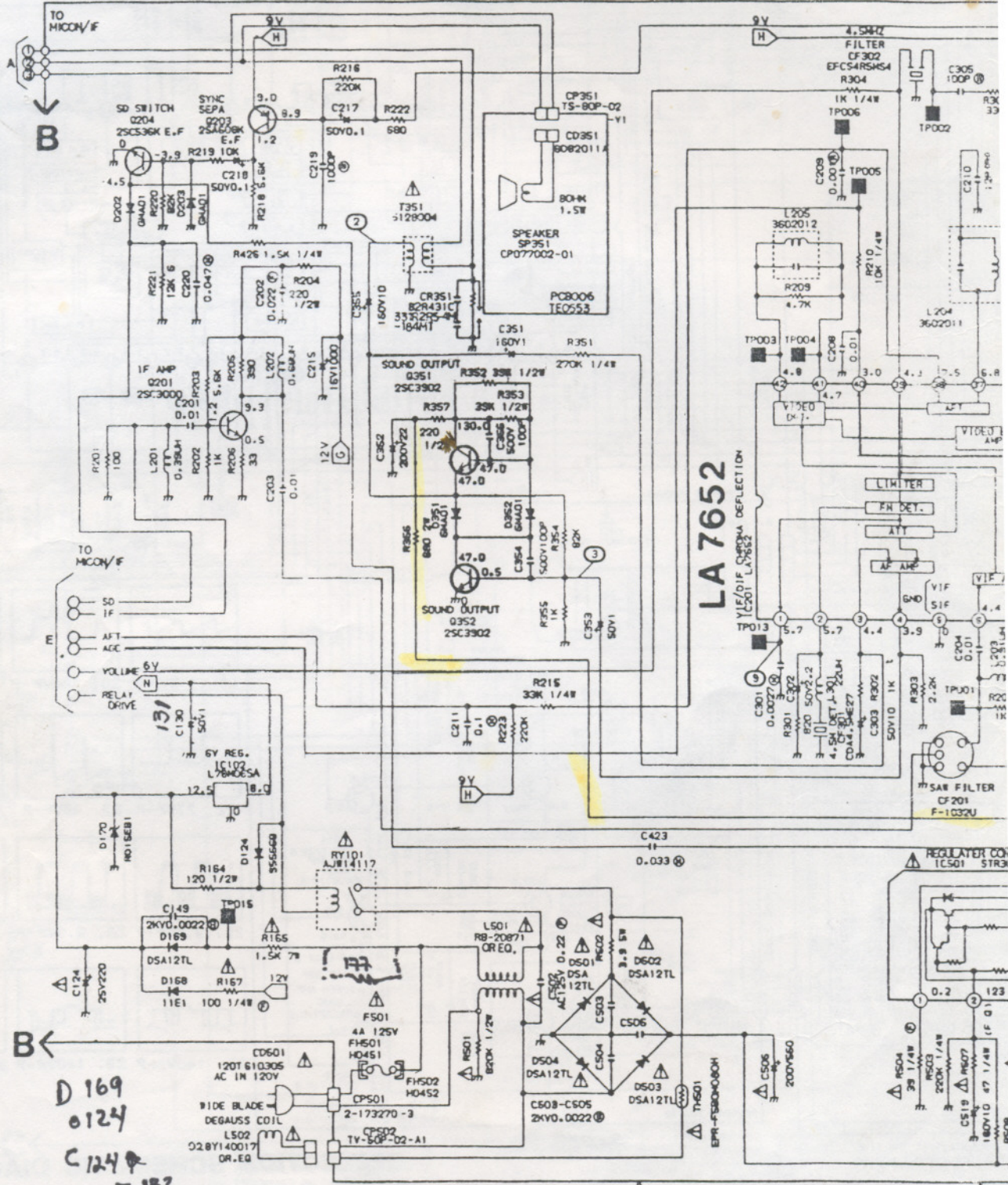
CAUTION: SINCE THESE PARTS MARKED BY Δ ARE CRITICAL FOR SAFETY, USE ONES DESCRIBED IN PARTS LIST ONLY.

ATTENTION: LES PIÈCES RÉPARÉES PAR UN Δ ÉTANT DANGEREUSES AU POINT DE VUE SÉCURITÉ N'UTILISER QUE CELLES DÉCRITES DANS LA NOMENCLATURE DES PIÈCES.

NOTE: THIS SCHEMATIC OF PRINTING A



2. 30VP-P 3. 0.05VP-P 4. 1.5VP-P 5. 0.45VP-P 6. 1.2VP-P 7. 0.1VP-P 8. 5.2VP-P 9. 1.5VP-P 10.



CAUTION: SINCE THESE PARTS MARKED BY Δ ARE CRITICAL FOR SAFETY, USE ONES DESCRIBED ON PARTS LIST ONLY.

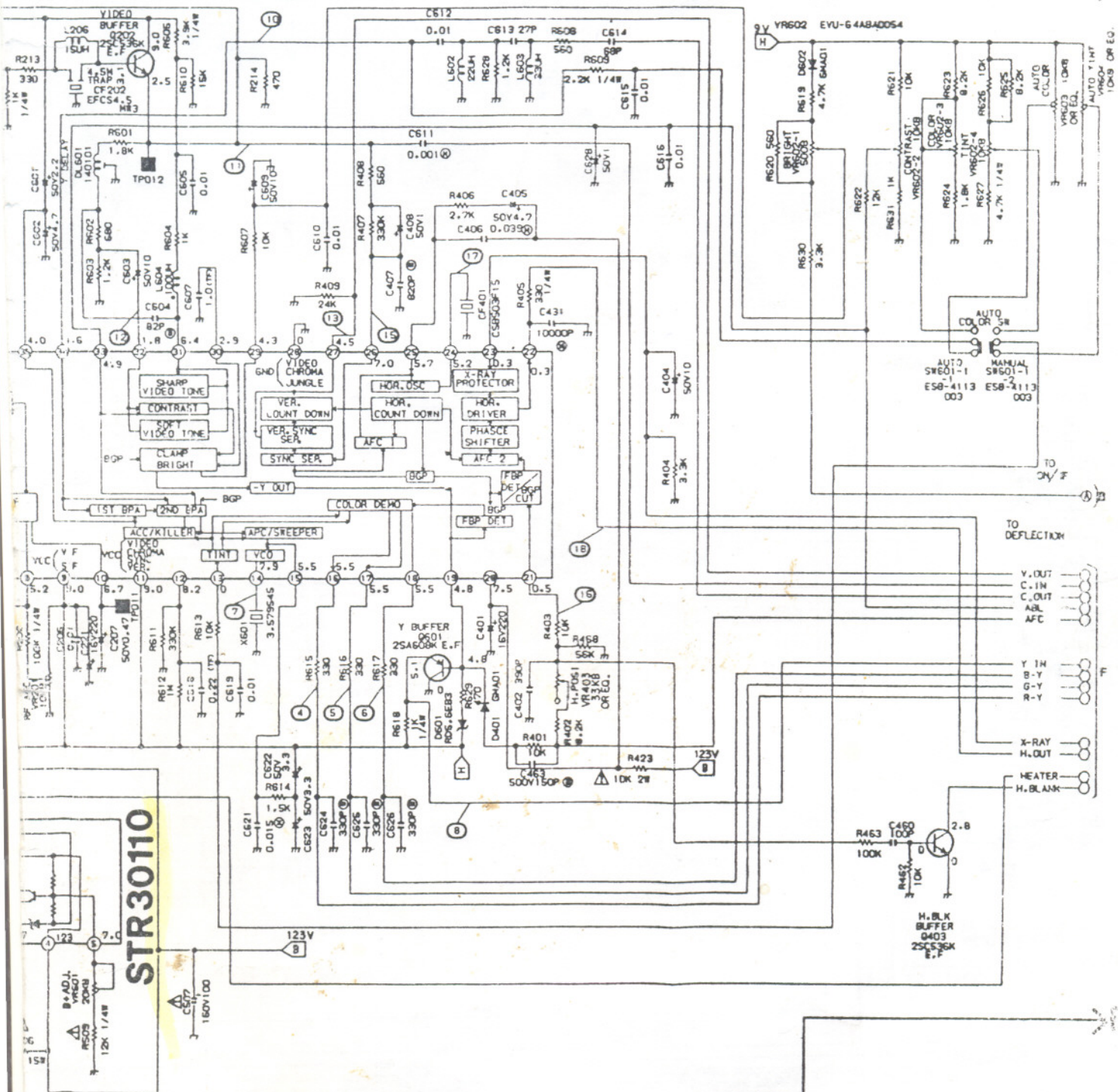
ATTENTION: LES PIÈCES REPARÉES PAR UN Δ ET DANGEREUSES AU POINT DE VUE SECURITE. N'UTILISER QUE CELLES DÉCRITES DANS LA NOMENCLATURE DES PIÈCES.

AUDIO/POWER SCHEMATIC DIAGRAM

BROKSONIC

CTVG 4563 CTC

0VP-P 11. 1.8VP-P 12. 0.5VP-P 13. 1.6VP-P 15. 1.8VP-P 16. 10VP-P 17. 0.24VP-P 18. 1.25VP-P



NOTE: THIS SCHEMATIC DIAGRAM IS THE LATEST AT THE TIME OF PRINTING AND SUBJECT TO CHANGE WITHOUT NOTICE.

CHROMA/AUDIO/POWER SCHEMATIC DIAGRAM

1-9803