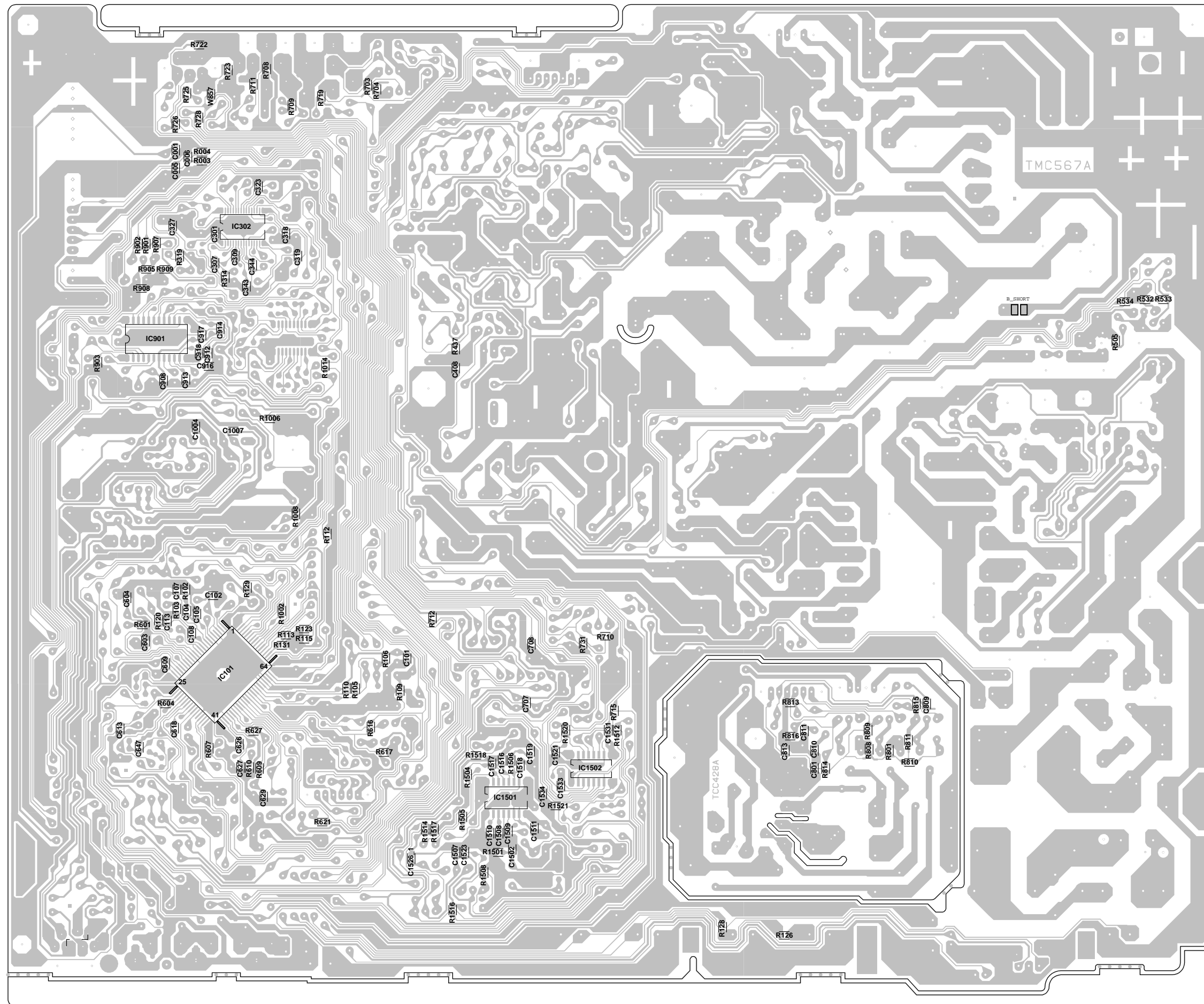
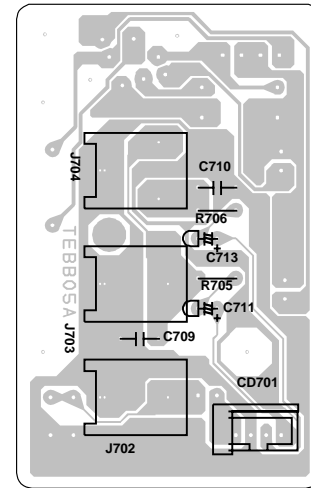


PRINTED CIRCUIT BOARDS  
MAIN/CRT (CHIP MOUNTED PARTS)  
SOLDER SIDE

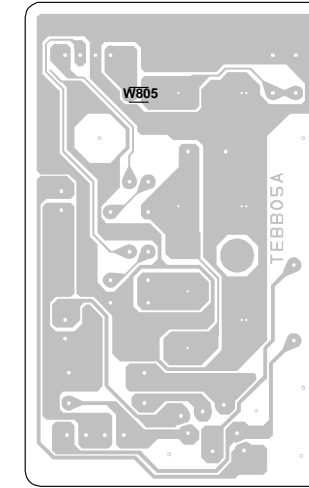


## PRINTED CIRCUIT BOARDS

**STEREO (INSERTED PARTS)**  
**SOLDER SIDE**



**STEREO (CHIP MOUNTED PARTS)  
SOLDER SIDE**




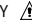
# MICON/CHROMA/TUNER SCHEMATIC DIAGRAM (MAIN PCB)

1	CNVSS	41	NC
2	XIN	42	HVCO F/B
3	XOUT	43	AFC FILTER
4	TEST1	44	DEF GND
5	VSS	45	FBP IN
6	MCU VCC	46	H OUT
7	TESTO	47	DEF VCC
8	FILT	48	NC
9	HLT	49	HI VCC
10	VHOLD	50	R OUT
11	CVIN	51	G OUT
12	RESET IN	52	B OUT
13	MCU RESET OUT	53	ACL
14	Y SW OUT	54	NC
15	V/C GND	55	PROTECT
16	3.58 XTAL	56	SDA
17	C-APC	57	H_CTL
18	MCU5.7V REG OUT	58	SCL
19	NC	59	NC
20	CVBS IN3	60	NC
21	AUDIO IN3	61	NC
22	V/C VCC	62	DEGAUSS_H
23	MCU TEST	63	STANDBY_H
24	CVBS IN2	64	VOLUME
25	AUDIO IN2	65	NC
26	CVBS IN1	66	AFT
27	AUDIO IN1	67	KEY1
28	5.7V REG OUT	68	KEY2
29	C(Y/C) IN	69	POWER_ON
30	Y(Y/C) IN	70	REMOCON
31	VREG VCC	71	AV2
32	FSC OUT	72	AV1
33	MONITOR OUT	73	AUDIO_MUTE
34	AUDIO ATT OUT	74	X-RAY
35	AUDIO ATT FILTER	75	IIC_OFF
36	NC	76	ON_TIMER
37	V RAMP F/B	77	SYNC
38	V RAMP OUT	78	POWER FAIL
39	V RAMP CAP	79	X-RAY_TEST
40	8.7V REG OUT	80	EXT_MUTE



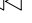
NOTE: THIS SCHEMATIC DIAGRAM IS THE LATEST AT THE TIME OF PRINTING AND SUBJECT TO CHANGE WITHOUT NOTICE.

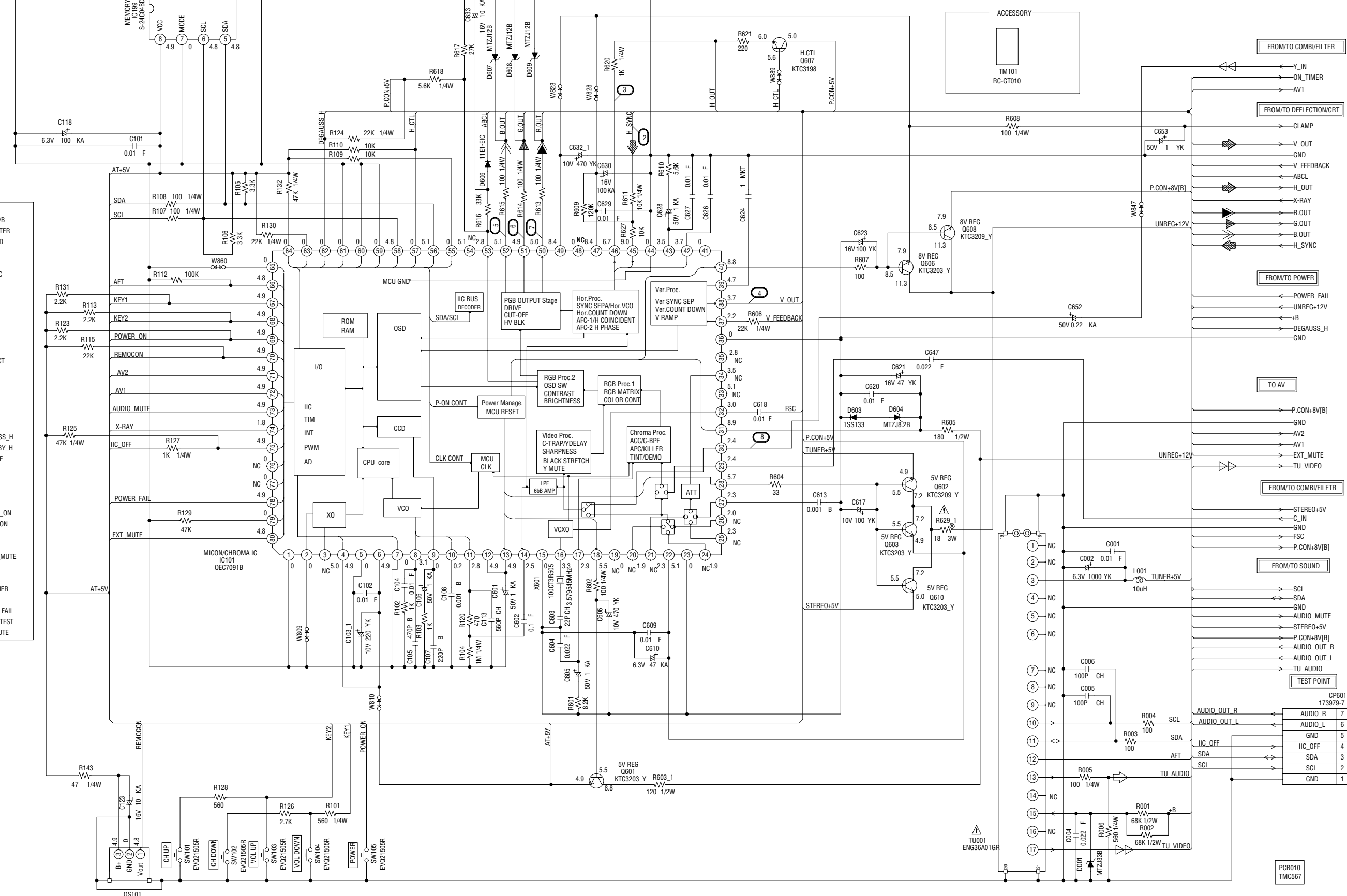
NOTE: THE DC VOLTAGE AT EACH PART WAS MEASURED WITH THE DIGITAL TESTER WHEN THE COLOR BROADCAST WAS RECEIVED IN GOOD CONDITION AND PICTURE IS NORMAL.

**ATTENTION:** LES PIÈCES RÉPARÉES PAR UN  ÉTANT DANGEREUSES AN POINT DE VUE SECURITE N'UTILISER QUE CELLS DECRITES DANS LA NOMENCLATURE DES PIÈCES.

**CAUTION:** SINCE THESE PARTS MARKED BY  ARE CRITICAL FOR SAFETY, USE ONES DESCRIBED IN PARTS LIST ONLY.

 R.SIGNAL  
 G.SIGNAL  
 B.SIGNAL

 DEFLECTION SIGNAL  
 AUDIO SIGNAL  
 TUNER VIDEO SIGNAL



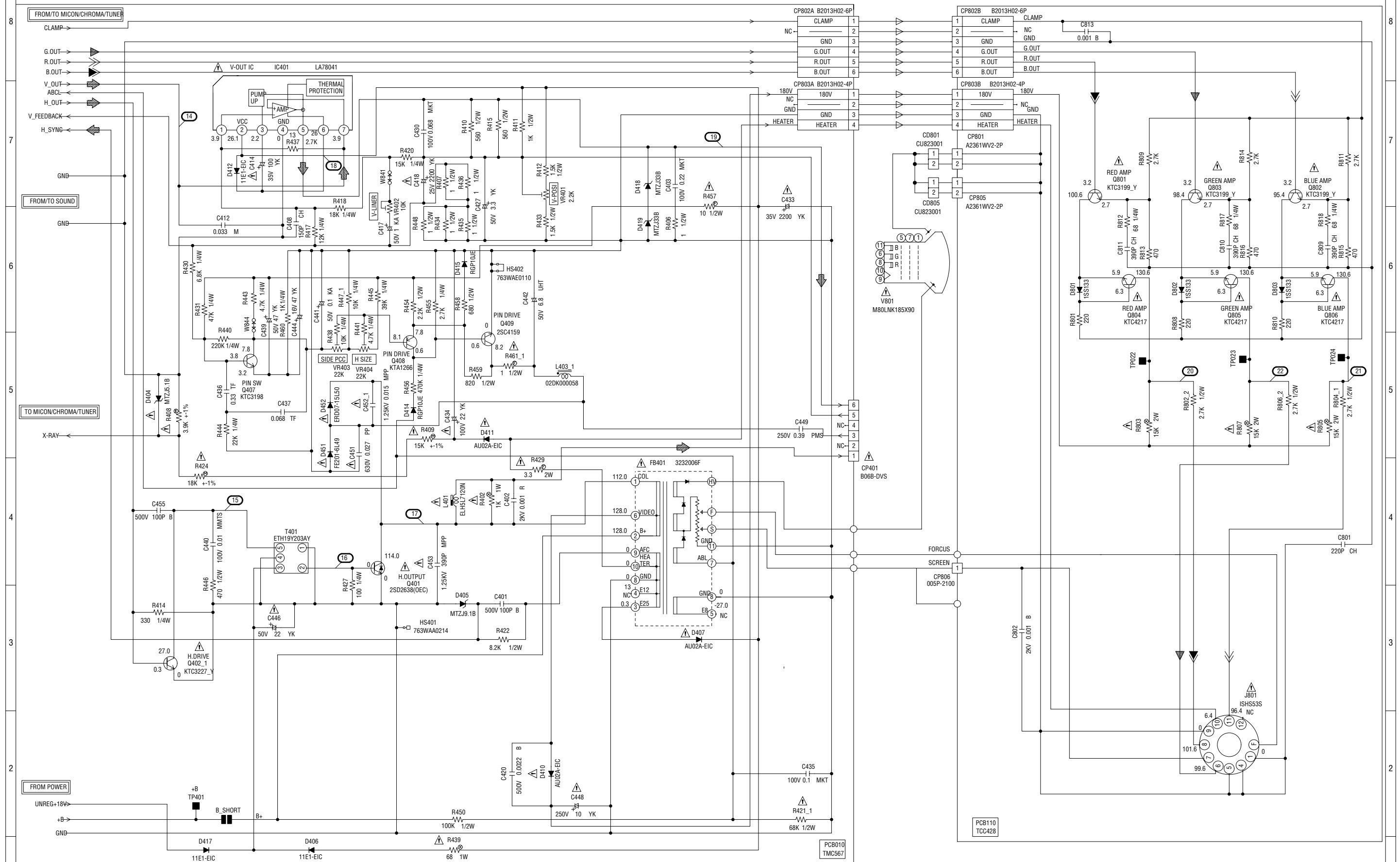
1	GND
2	SCL
3	SDA
4	IIC_OFF
5	GND
6	AUDIO_L
7	AUDIO_R

1	GND
2	SCL
3	SDA
4	IIC_OFF
5	GND
6	AUDIO_L
7	AUDIO_R

1	GND
2	SCL
3	SDA
4	IIC_OFF
5	GND
6	AUDIO_L
7	AUDIO_R

1	GND
2	SCL
3	SDA
4	IIC_OFF
5	GND
6	AUDIO_L
7	AUDIO_R

# DEFLECTION/CRT SCHEMATIC DIAGRAM (TV MT PCB)



NOTE: THIS SCHEMATIC DIAGRAM IS THE LATEST AT THE TIME OF PRINTING AND SUBJECT TO CHANGE WITHOUT NOTICE.

NOTE: THE DC VOLTAGE AT EACH PART WAS MEASURED WITH THE DIGITAL TESTER WHEN THE COLOR BROADCAST WAS RECEIVED IN GOOD CONDITION AND PICTURE IS NORMAL.

NOTE: THE RESISTOR MARKED F IS FUSE RESISTOR. THE ALUMI ELECTROLYTIC CAPACITOR MARKED NP IS NON POLAR ONE.

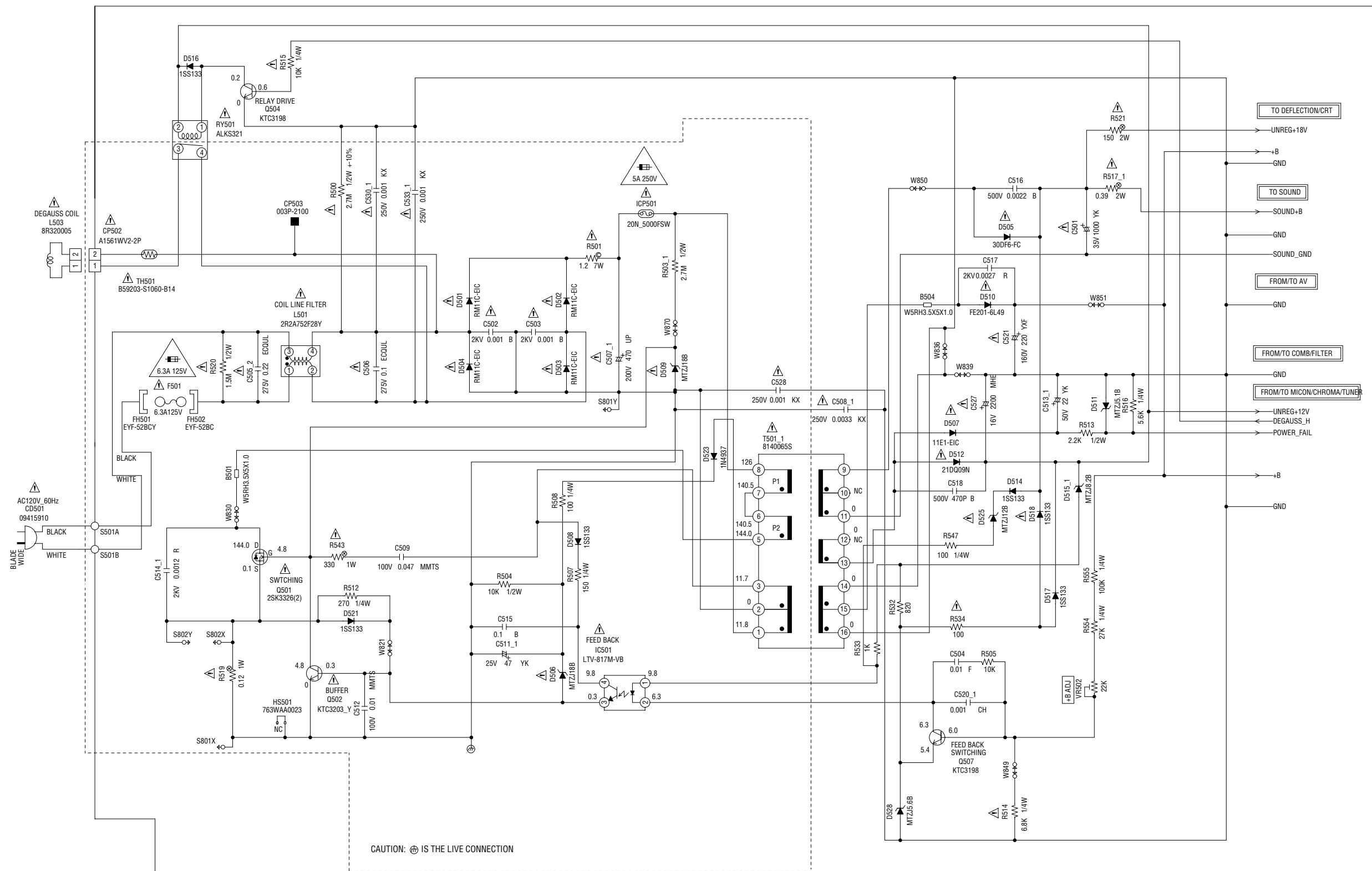
ATTENTION: LES PIECES REPARÉES PAR UN ÉTANT DANGEREUSES AN POINT DE VUE SECURITE N'UTILISER QUE CELLS DECRITES DANS LA NOMENCLATURE DES PIECES.

CAUTION: SINCE THESE PARTS MARKED BY ARE CRITICAL FOR SAFETY, USE ONES DESCRIBED IN PARTS LIST ONLY.

R.SIGNAL  
 G.SIGNAL  
 B.SIGNAL  
 DEFLECTION SIGNAL

## POWER SCHEMATIC DIAGRAM

(TV MT PCB)



CAUTION:  IS THE LIVE CONNECTION



**CAUTION:** FOR CONTINUED PROTECTION AGAINST FIRE HAZARD,  
REPLACE ONLY WITH THE SAME TYPE FUSE  
6.3A 125V(F501) AND 5A 250V(ICP501).


**ATTENTION:** POUR UNE PROTECTION CONTINUE LES RISQUES D'INCEIE  
N'UTILISER QUE DES FUSIBLE DE MEME TYPE  
6.3A 125V(F501) ET 5A 250(ICP501).

**CAUTION:** ICP501 IS MANUFACTURED BY SKYGATE CO.,LTD.  
TYPE 20N.

NOTE: THIS SCHEMATIC DIAGRAM IS THE LATEST AT THE TIME OF PRINTING AND SUBJECT TO CHANGE WITHOUT NOTICE.

NOTE: THE DC VOLTAGE AT EACH PART WAS MEASURED WITH THE DIGITAL TESTER WHEN THE COLOR BROADCAST WAS RECEIVED IN GOOD CONDITION AND PICTURE IS NORMAL.

**ATTENTION:** LES PIÈCES RÉPARÉES PAR UN  ÉTANT DANGEREUSES AU POINT DE VUE SÉCURITÉ N'UTILISER QUE CELLES DÉCRITES DANS LA NOMENCLATURE DES PIÈCES.

**CAUTION** SINCE THESE PARTS MARKED BY  ARE CRITICAL FOR SAFETY, USE ONES DESCRIBED IN PARTS LIST ONLY .

PCB010  
TMC567

**SOUND SCHEMATIC DIAGRAM  
(MAIN PCB)**

NOTE: THIS SCHEMATIC DIAGRAM IS THE LATEST AT THE TIME OF PRINTING AND SUBJECT TO CHANGE WITHOUT NOTICE.

NOTE: THE DC VOLTAGE AT EACH PART WAS MEASURED WITH THE DIGITAL TESTER WHEN THE COLOR BROADCAST WAS RECEIVED IN GOOD CONDITION AND PICTURE IS NORMAL.

**ATTENTION:** LES PIECES REPAREES PAR UN ATANT DANGEREUSES AN POINT DE VUE SECURITE N'UTILISER QUE CELLS DECRITES DANS LA NOMENCLATURE DES PIECES.

**CAUTION:** SINCE THESE PARTS MARKED BY ARE CRITICAL FOR SAFETY, USE ONES DESCRIBED IN PARTS LIST ONLY.

AUDIO SIGNAL

PCB010  
TMC567

← AUDIO SIGNAL

PCB010  
TMC567

(TV MT PCB)



NOTE: THIS SCHEMATIC DIAGRAM IS THE LATEST AT THE TIME OF PRINTING AND SUBJECT TO CHANGE WITHOUT NOTICE.

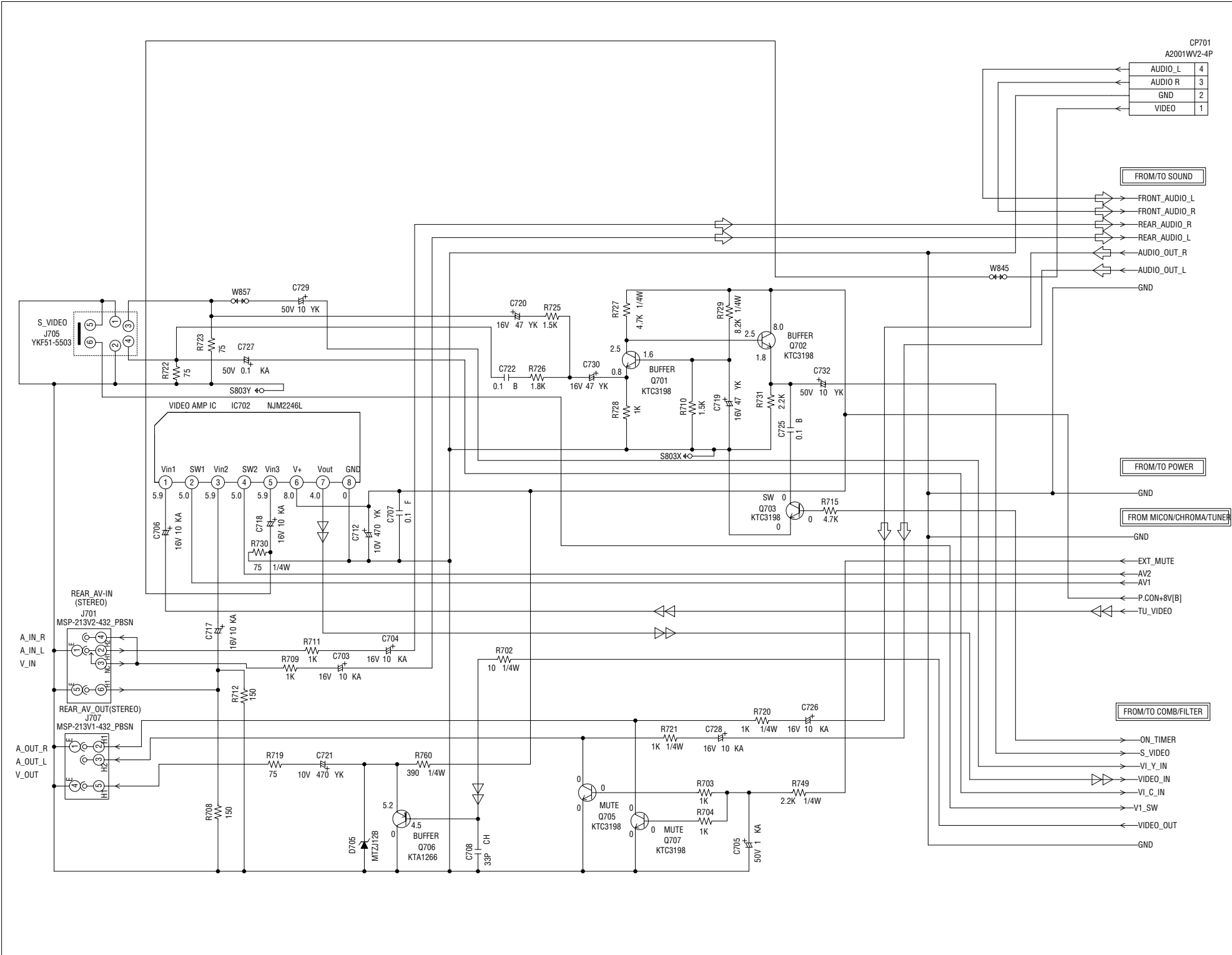
NOTE: THE DC VOLTAGE AT EACH PART WAS MEASURED WITH THE DIGITAL TESTER WHEN THE COLOR BROADCAST WAS RECEIVED IN GOOD CONDITION AND PICTURE IS NORMAL.

CAUTION: DIGITAL TRANSISTOR



<<< COLOR SIGNAL  
 << LUMINANCE SIGNAL  
 << TUNER VIDEO SIGNAL

AV SCHEMATIC DIAGRAM  
(TV MT PCB)



NOTE: THIS SCHEMATIC DIAGRAM IS THE LATEST AT THE TIME OF PRINTING AND SUBJECT TO CHANGE WITHOUT NOTICE.

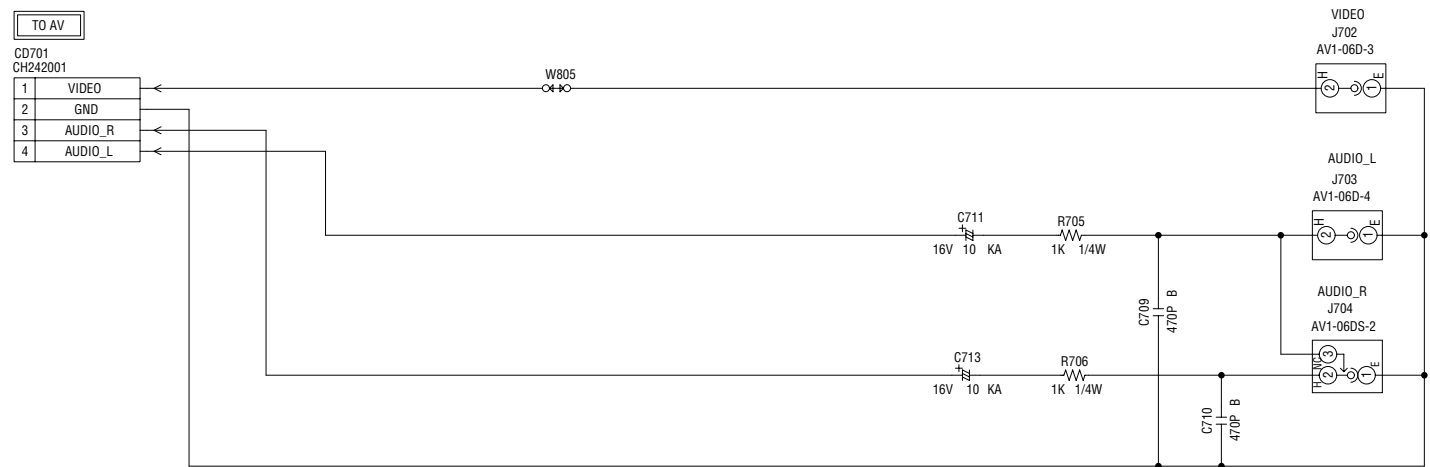
NOTE: THE DC VOLTAGE AT EACH PART WAS MEASURED WITH THE DIGITAL TESTER WHEN THE COLOR BROADCAST WAS RECEIVED IN GOOD CONDITION AND PICTURE IS NORMAL.

↔ AUDIO SIGNAL  
◀▶ TUNER VIDEO SIGNAL

PC8010  
TMC567



AV JACK SCHEMATIC DIAGRAM  
(AV JACK PCB)



NOTE: THIS SCHEMATIC DIAGRAM IS THE LATEST AT THE TIME  
OF PRINTING AND SUBJECT TO CHANGE WITHOUT NOTICE.

NOTE: THE DC VOLTAGE AT EACH PART WAS MEASURED  
WITH THE DIGITAL TESTER WHEN THE COLOR BROADCAST  
WAS RECEIVED IN GOOD CONDITION AND PICTURE IS NORMAL.

PC8280  
TEB805