

SAMSUNG

MICRO COMPONENT SYSTEM

MM-B7/ ZB7

SERVICE Manual

MICRO COMPONENT SYSTEM



CONTENTS

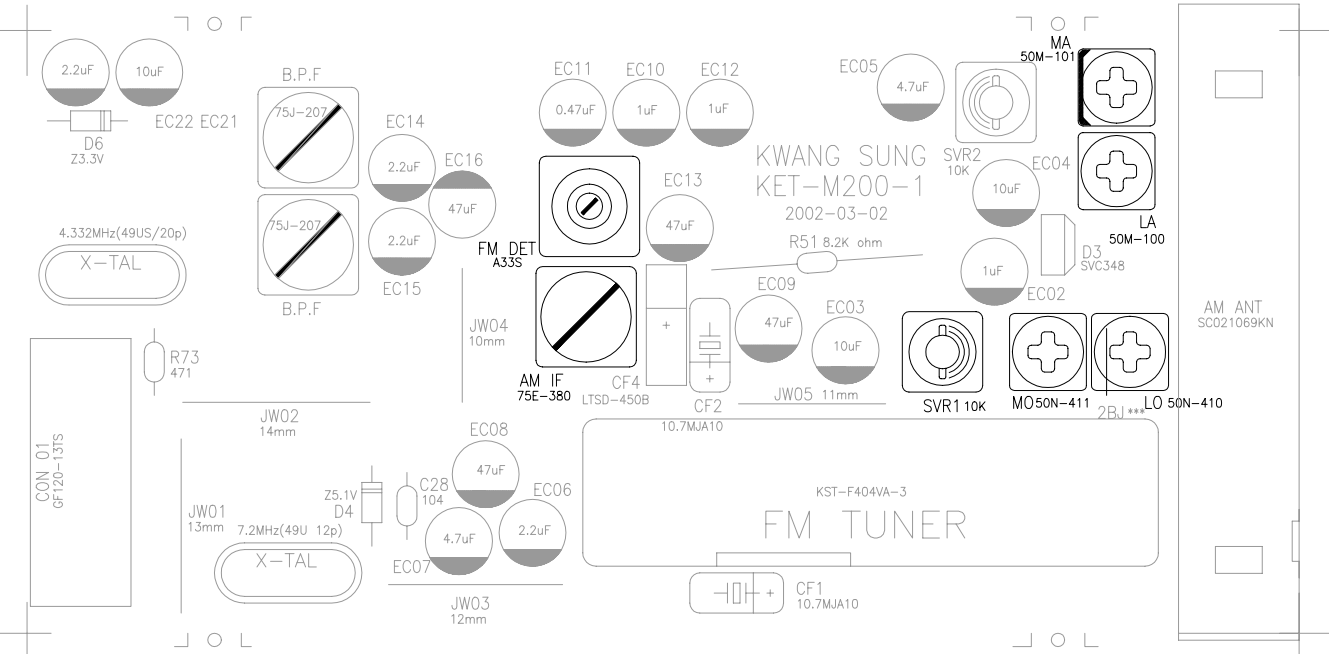
1. Alignment and Adjustments
2. Exploded Views and Parts List
3. Electrical Parts List
4. Block Diagrams
5. PCB Diagrams
6. Wiring Diagram
7. Schematic Diagrams



ELECTRONICS

1. Alignment and Adjustments

1. Tuner



AH40-00026A (KST-MM114LS1-0) TOP VIEW

* Adjustment Location of Tuner PCB

ITEAM	AM(MW) OSC Adjustment	AM(MW) RF Adjustment	LW OSC Adjustment	AM(MW) RF Adjustment
Received FREQ.	522~1611 KHz	594 KHz	146~290 KHz	150 KHz
Adjustment point	MO	MA	LO	LA
Output	1~7.0±0.5V	Maximum Output(Fig1-4)	2~7.0±0.5V	Maximum Output(Fig1-4)

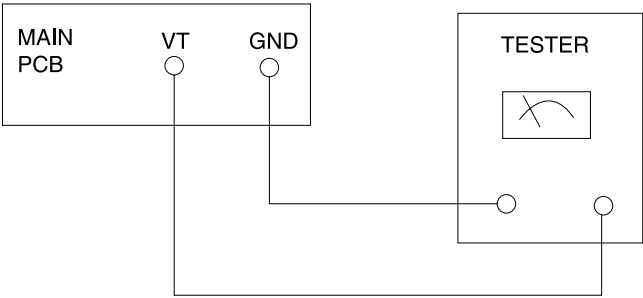


Fig 1-4 OSC Voltage

FM THD Adjustment	
SSG FREQ.	98 MHz
Adjustment point (FM DET)	FM DETECTOR COIL
Output	60 dB
Minumum Distortion (0.4% below) (Figure 1-1)	

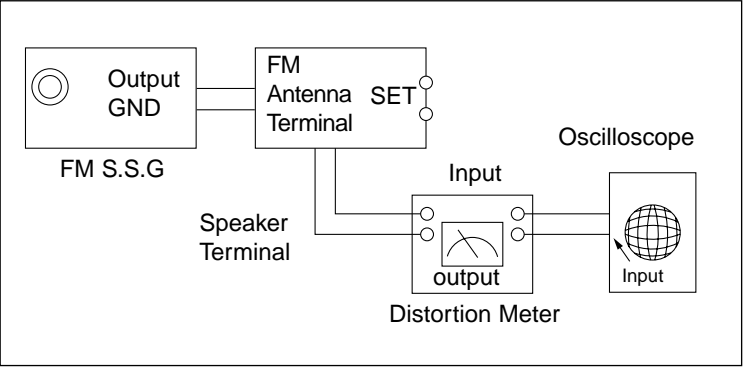


Figure1-1 IF CENTER and THD Adjustment

FM Search Level Adjustment	
SSG FREQ.	98 MHz
Adjustment point (SVR1)	BEACON SENSITIVITY SEMI-VR(20KΩ)
Output	28 dB(±2dB)
Adjust SVR1 so that "TUNED" of FLT is lighted (Figure 1-2)	

*Adjust FM S.S.G level to 28dB

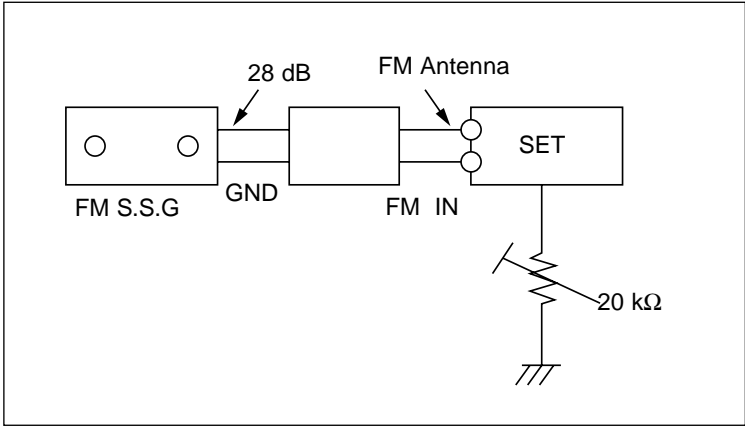


Figure1-2 FM Auto Search Level Adjustment

AM(MW) I.F Adjustment	
SSG FREQ.	450 kHz
Frequency	522 kHz
Adjustment point	AM IF
Maximum output (Figure 1-3)	

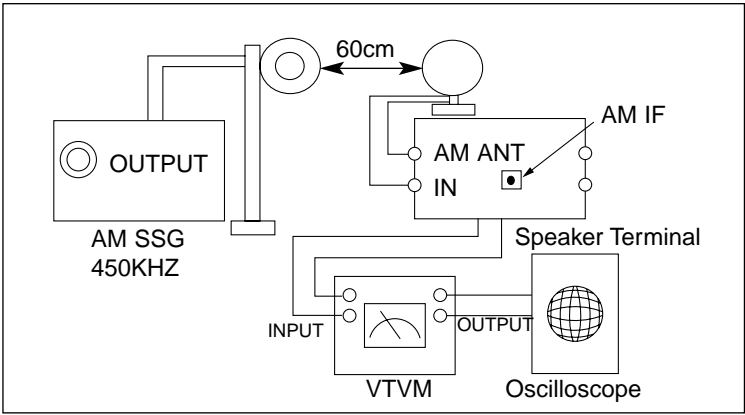


Figure1-3 AM I.F Adjustment

2. Cassette Deck

2-1. To Adjust Tape Speed

Notes

1) Measuring tape: i) MTT-111 (or equivalent)
(Tapes recorded with 3kHz)
ii) MTT-5512 (or equivalent)

2) Connect the SPK OUT of the MAIN PCB to the frequency counter as in figure 1-5.

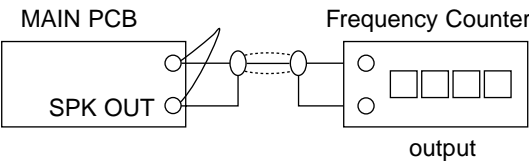


Figure 1-5

Step	Item	Pre-Setup Condition	Pre-Setup	To Adjust	Standard	Remark
1	NOR SPEED Control	SPK OUT (connected to the frequency counter)	1) Deck :MTT-111 2) Press PLAY SW button	CVR1	3KHz	±1% range

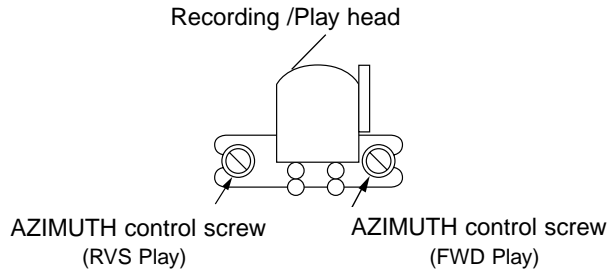


Figure 1-6

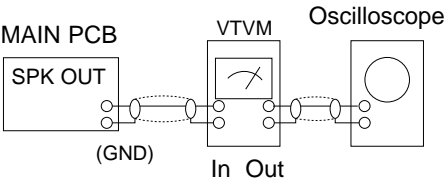


Figure 1-7

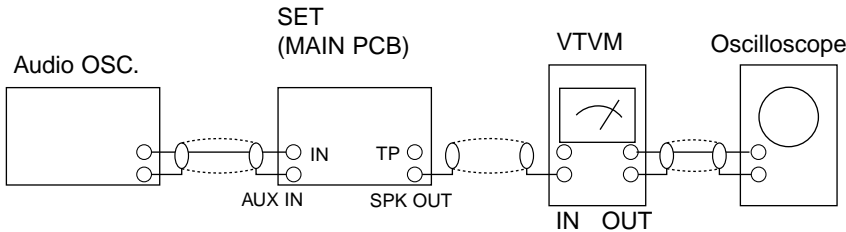


Figure 1-8

2-2. To Adjust PlayBack Level/REC

Notes

1) Before the actual adjustment, clean the play/recording head.

2) Measuring tape :
i) MTT-114N(or equivalent 10kHz AZIMUTH control)
ii) MTT-5512

3) The cassette deck is connections as shown in figure 1-7.

1. Adjust Deck Play Level

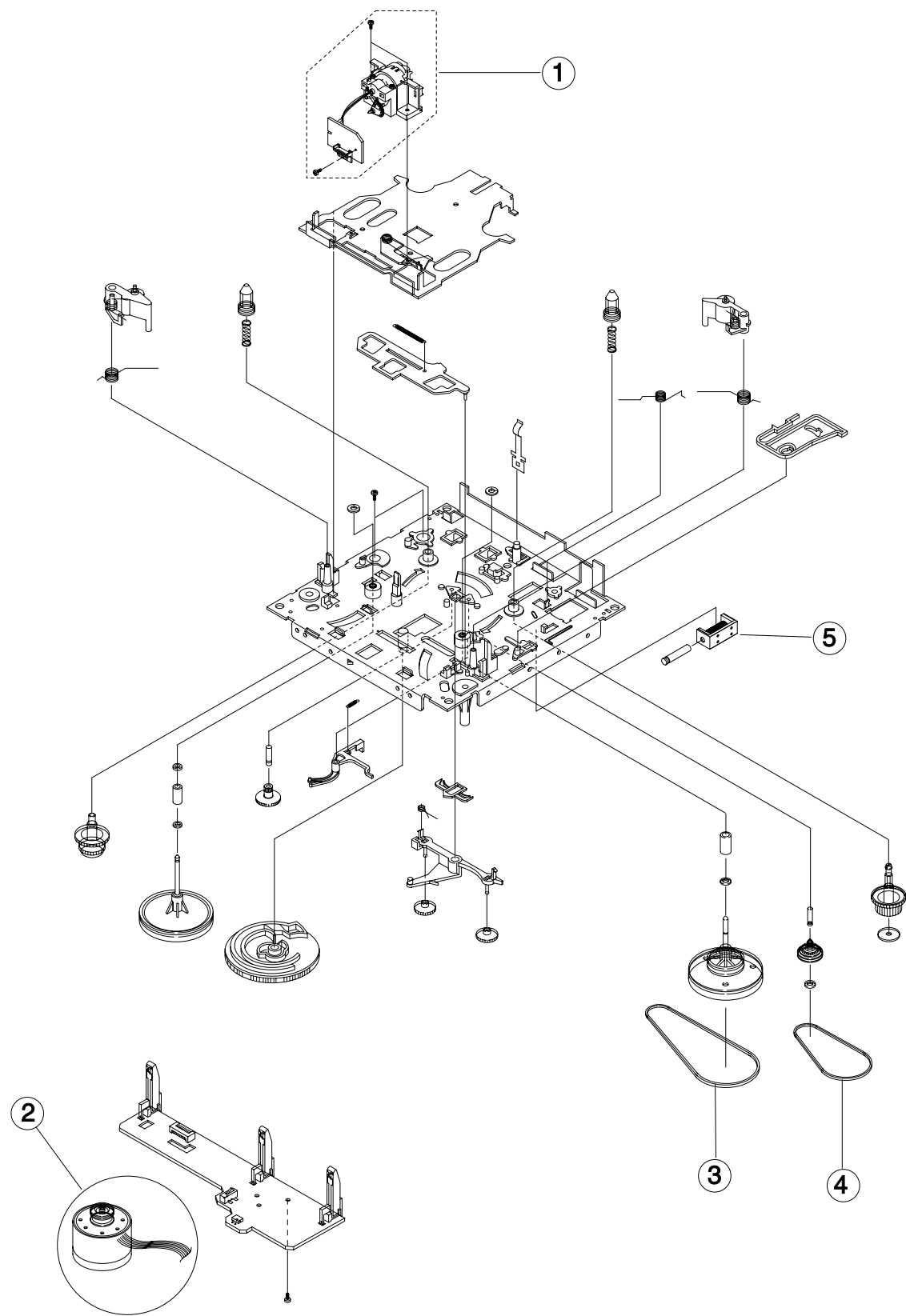
Step	Item	Pre-Setup Condition	Pre-Setup	To Adjust	Standard	Remark
1	AZIMUTH	SPK OUT (VTVM is connected to the scope)	After putting MTT-114N into Deck - Press FWD PLAY button.	- Turn the control screw to as shown in Figure 1-6.	Max output and same phase (both channels)	After adjustment secure it with REGION LOCK.

2. Adjust Deck REC BIAS

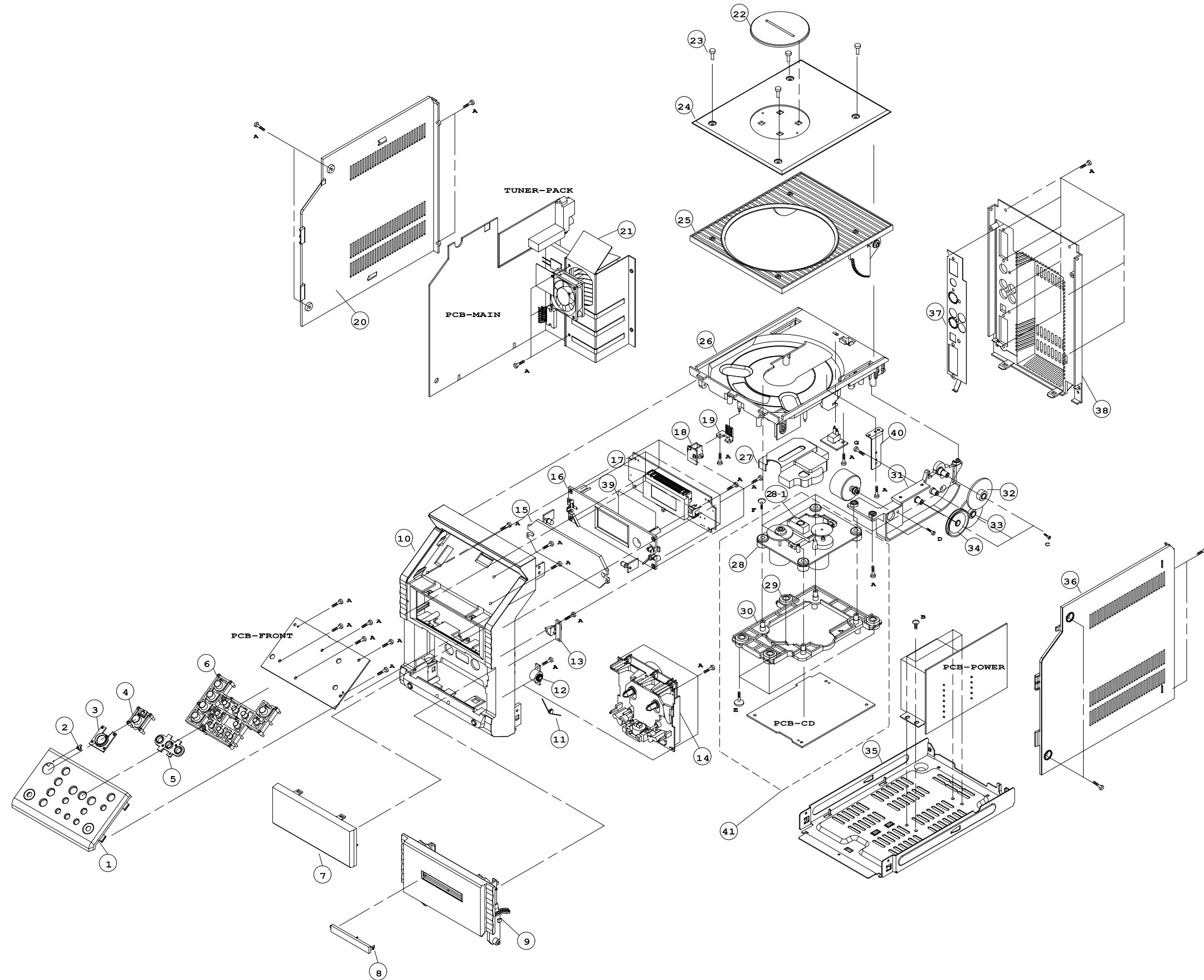
Step	Item	Pre-Setup Condition	Pre-Setup	To Adjust	Standard	Remark
1	Recording Bias Frequence		After putting MTT-5512 into Deck 1) Press REC PLAY button. 2) TAPE PCB JR1 L/R (by JWA1) ,connected to VTVM	- Turn JT1 to the right and left.	105KHz	
2	Recording Bias Voltage		After putting MTT-5512 into Deck 1) Press REC PLAY button. 2) TAPE PCB JR1 L/R (by JWA1) ,connected to VTVM	FIXed	CHECK TO 58mV(±10mV)	

2.Exploded Views and Parts List

2-1 Cassette Deck



No.	Code No.	Description	Specification	Remarks
	AH59-01080A	DECK-CASSETTE	ADR248BTR1	DC12V
1	AH81-00098A	A/S-HEAD ASSY	TR981A,14KHZ	MT91-11011S
2	AH81-00422A	A/S-ASSY MOTOR	CCM090L2	MT91-15013Y
3	AH81-00100A	A/S-BELT MAIN	ADR2400S-MAIN	6602-001037
4	AH81-00101A	A/S-BELT SUB	ADR2400S,34.7	6602-001055
5	AH81-00102A	A/S-SOLENOID	ADR2400-1	MT75-00049A

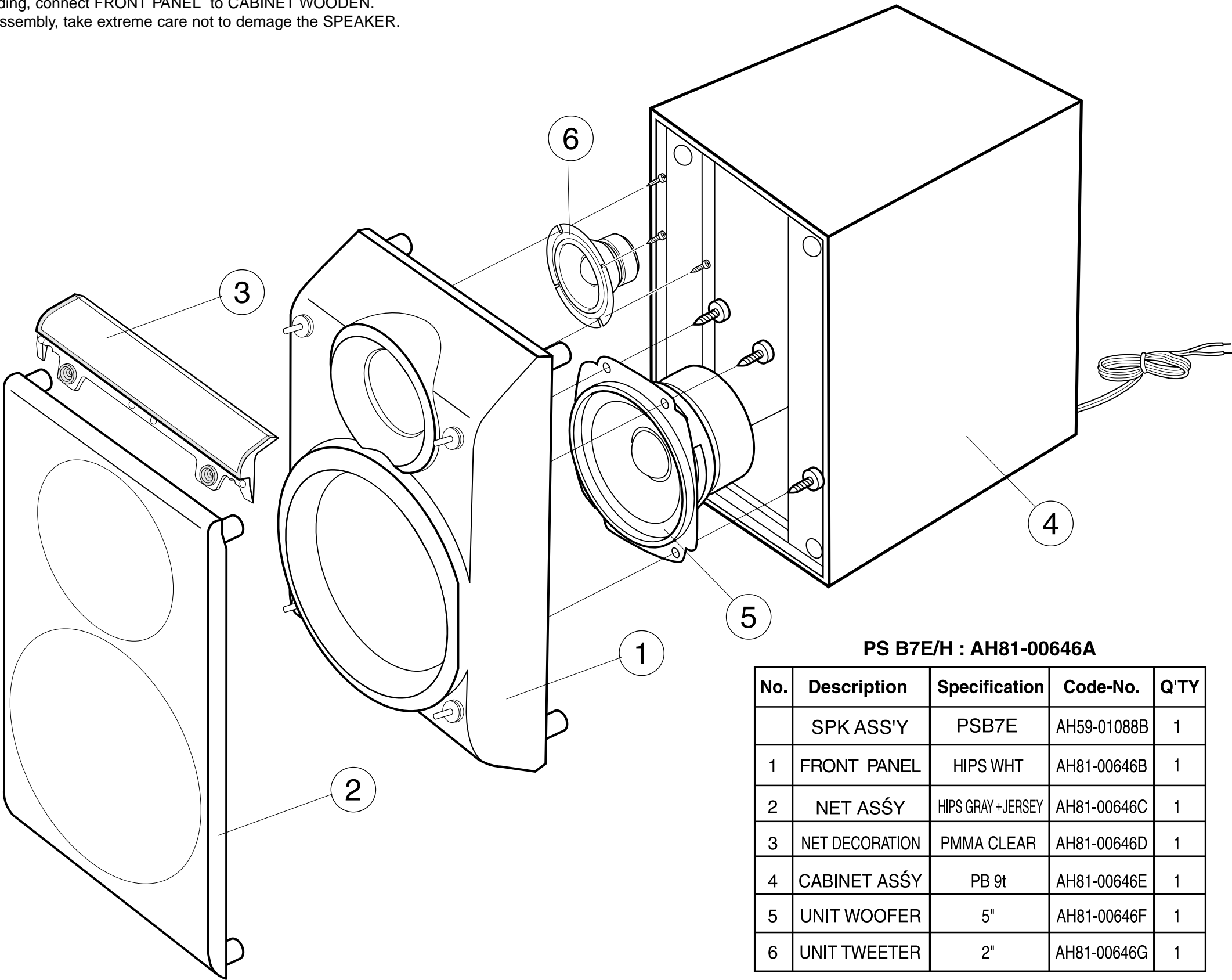


* Parts List

No.	Code No.	Description & Specification	Q'TY	Remarks	No.	Code No.	Description & Specification	Q'TY	Remarks
1	AH64-01899F	DECO-FRONT; ABS L/GRAY	1		38	AH64-01895A	CABINET-REAR; MIPS L/GRAY	1	
	AH64-01899G	DECO-FRONT; ABS L/GRAY	1			AH64-01895B	CABINET-REAR; MIPS L/GRAY	1	
2	AH67-00181A	LENS-STANDBY; PMMA MILKY	1		39	AH63-00439A	FILTER-VFD; KIMO 100	1	
3	AH67-00173A	LENS-POWER; PMMA RED	1		40	AH61-01128A	BRKT-H_GEAR:SECC T1.0	1	
4	AH64-01910B	KNOB-POWER; ABS L/GRAY	1		41	AH59-01083A	DECK-CD PACK MECHA ASSY	1	
5	AH67-00172A	LENS-DIR; PMMA BLUE	1						
6	AH64-01909B	KNOB-FUNCTION; ABS L/GRAY	1		A	6003-000276	SCREW-TAP TITE: BH 3X10 YEL	50	
7	AH64-01908B	WINDOW-VFD; PMMA CLR SMOKE	1		B	AH60-00014A	SCREW-TAP TITE: BH 4X6 YEL	4	
8	AH64-01907A	WINDOW-CASS; PC BLUE	1		C	AH60-10001A	SCREW-TAP TITE: PWH 2X5 pi7	3	
9	AH64-01902B	DOOR-CASS; ABS L/GRAY	1		D	AH60-10020B	SCREW: RH 2.6X5 YEL	2	
10	AH64-01894B	CABINET-FRONT; MIPS L/GRAY	1		E	AH64-01106H	SCREW-TAP TITE: BWH 3X10 pi12	4	
11	AH61-01073A	SPRING-EJ DOOR; SUS 304 1.0T	1		F	AH60-10180A	SCREW-TAP TITE: BWH 2.6X10 YEL pi10	4	
12	AH61-80030A	ASSY DAMPER; POM M0.8	1		G	6002-000126	SCREW-TAPING FH 3X10 BLK	2	
13	AH95-50001A	ASSY LATCH; MAX 555	1						
14	AH59-01080A	DECK-CASSETTE	1						
15	AH67-00174B	LENS-VFD; PMMA CLR	1						
	AH67-00174C	LENS-VFD; PMMA CLR	1						
16	AH61-01070A	HOLDER-VFD LENS; ABS BLACK	1						
17	AH61-01075A	HOLDER-VFD; ABS BLACK	1						
18	AH61-00644A	HOLDER-ILLUMINATION; ABS	1						
19	AH67-00175A	LENS-CD L; PMMA MILKY	1						
20	AH64-01896B	CABINET-SIDE L; MIPS L/GRAY	1						
21	AH61-01071A	BRACKET-H/S; SECC 1.0T	1						
22	AH64-01900B	DECO-TOP; ABS L/GRAY	1						
23	AH64-01106G	DECO-SCREW; SWCH16	1						
24	AH64-01905B	WIINDOW-TOP MOTOR; PMMA CLR SMOKE	1						
25	AH64-01903B	DOOR-CD MOTOR; PC+ABS	1						
26	AH64-01898B	CABINET-TOP; MIPS L/GRAY	1						
27	AH61-20529B	CAP-P/U	1						
28	AH59-01082A	DECK-CDP; CMS-P31BG6, SOH	1						
28-1	AH30-00037A	PICK-UP; SOH-AAH(1H20L), 100*80*45	1						
29	AH73-00010A	RUBBER-HOLDER; BUTYL	4						
30	AH61-01068A	HOLDER-CD; PC+ABS	1						
31	AH61-01069A	HOLDER-GEAR; PC+ABS	1						
32	AH66-00103A	GEAR-B; POM BLACK	1						
33	AH66-00102A	GEAR-A; POM BLACK	1						
34	AH66-00101A	GEAR-PULLEY; POM BLACK	1						
35	AH64-01911A	CABINET-BOTTOM; SECC 1.0T	1						
36	AH64-01897B	CABINET-SIDE R; MIPS L/GRAY	1						
37	AH67-01072A	BRKT-GND; PBS 0.3t	1						

2-3 SPEAKER Exploded View and Parts list

* CAUTION : It is used the bonding, connect FRONT PANEL to CABINET WOODEN.
So when the disassembly, take extreme care not to damage the SPEAKER.



3. Electrical Parts List

*S.N.A. : Service Not Available

Location no.	Code no.	Description & Specification	Remarks	Location no.	Code no.	Description & Specification	Remarks
**** MM-B7 Parts List ****				R133	2007-000300	R-CHIP:10KOHM,5%,1/10W,DA,TP,2012	
	3809-001224	CABLE-FLAT;30V,80C,80mm,13P,1.25mm,UL289		R132	2007-000300	R-CHIP:10KOHM,5%,1/10W,DA,TP,2012	
	3809-001337	CABLE-FLAT;30V,80C,300MM,17P,1.25MM,UL28		MR3	2007-000300	R-CHIP:10KOHM,5%,1/10W,DA,TP,2012	
	3809-001338	CABLE-FLAT;30V,80C,120MM,27P,1.25MM,UL28		MR2	2007-000300	R-CHIP:10KOHM,5%,1/10W,DA,TP,2012	
	6501-001391	CABLE TIENY, LON 66 08474		R108	2007-000308	R-CHIP:10OHM,5%,1/10W,DA,TP,2012	
	AH26-00192A	TRANS POWER;MM-B7,-,230V,-,50HZ,		R125	2007-000338	R-CHIP:120KOHM,5%,1/10W,DA,TP,2012	
	AH38-10001A	WIRE-LEAD;1007#22,1500MM		R124	2007-000338	R-CHIP:120KOHM,5%,1/10W,DA,TP,2012	
	AH39-00257A	POWER CORD;Z-88,-,CP2,250V,2.5A,1830MM/1		R117	2007-000355	R-CHIP:12KOHM,5%,1/10W,DA,TP,2012	
	AH40-00026A	TUNER-PACK ASSY;KSTFMM114LS1-0,FMMW/LW/		R121	2007-000409	R-CHIP:15KOHM,5%,1/10W,DA,TP,2012	
	AH42-00001P	ANT LOOP,-,KS971120-01,18.5UH#10%-		R113	2007-000444	R-CHIP:180KOHM,5%,1/10W,DA,TP,2012	
	AH59-00134R	REMOCON-ASSY;MM-B7,SAMSUNG,-,27KEY,-,		R110	2007-000457	R-CHIP:18KOHM,5%,1/10W,DA,TP,2012	
	AH59-01080A	DECK-CASSETTE;ADR248BTR1,MM-B7,-,DC12V		R402	2007-000468	R-CHIP:1KOHM,5%,1/10W,DA,TP,2012	
	AH81-00098A	A/S-HEAD ASSY;TR981A,14KHZ,MT91-11011S,-		R401	2007-000468	R-CHIP:1KOHM,5%,1/10W,DA,TP,2012	
	AH81-00422A	A/S-ASSY MOTOR;CCM090L2,MT91-15013Y,-,		R209	2007-000468	R-CHIP:1KOHM,5%,1/10W,DA,TP,2012	
	AH59-01083A	DECK-CD PACK MECHA ASSY;-MM-B7,-,-,		R118	2007-000477	R-CHIP:1MOHM,5%,1/10W,DA,TP,2012	
	3409-001078	SWITCH-LEAF;16Vdc,500mA,10gf,SPST		R202	2007-000477	R-CHIP:1MOHM,5%,1/10W,DA,TP,2012	
	3809-001289	CABLE-FLAT;30V,80C,90MM,16P,1MM,UL20696		R303	2007-000502	R-CHIP:220OHM,5%,1/10W,DA,TP,2012	
	AH59-01082A	DECK-CDP;CMS-P31BG66,MM-B7,BALL,-,SOH-		R116	2007-000546	R-CHIP:20KOHM,5%,1/10W,DA,TP,2012	
	AH30-00037A	PICK UP;SOH-AAU(H20L),-,-,100*80*45		R210	2007-000572	R-CHIP:220OHM,5%,1/10W,DA,TP,2012	
	AH92-01561A	ASSY PCB-CD(ONLY);MM-B7,63HI-1CD/CDP,3.5		R208	2007-000572	R-CHIP:220OHM,5%,1/10W,DA,TP,2012	
IC401	1003-001162	IC-MOTOR DRIVER;KA3082,SIP,10PIN,25MILD		R207	2007-000572	R-CHIP:220OHM,5%,1/10W,DA,TP,2012	
X201	2802-000211	RESONATOR-CERAMIC;16.93MHz,0.5%,TP,10.0x		R204	2007-000572	R-CHIP:220OHM,5%,1/10W,DA,TP,2012	
CW105	3708-000189	CONNECTOR-FPC/FPC/PIC;17P,1.25mm,ANGLE.S		R128	2007-000653	R-CHIP:27KOHM,5%,1/10W,DA,TP,2012	
CW101	3708-001388	CONNECTOR-FPC/FPC/PIC;16P,1MM,ANGLE.SN		R129	2007-000941	R-CHIP:47KOHM,5%,1/10W,DA,TP,2012	
	3711-000906	CONNECTOR-HEADER;BOX,3P1R,2mm,ANGLE.SN		R123	2007-000941	R-CHIP:47KOHM,5%,1/10W,DA,TP,2012	
CW103	3711-000988	CONNECTOR-HEADER;BOX,5P1R,2mm,ANGLE.SN		R126	2007-001039	R-CHIP:56KOHM,5%,1/10W,DA,TP,2012	
CW106	AH39-00103A	LEAD CONNECTOR ASSY;-;5295,51004,8P,210M		R120	2007-001039	R-CHIP:56KOHM,5%,1/10W,DA,TP,2012	
	AH94-00666B	ASSY TAPG-CD;MM-B100MH,3.5S,CD-TAP		R104	2007-001039	R-CHIP:56KOHM,5%,1/10W,DA,TP,2012	
ZD301	0403-000344	DIODE-ZENER;UZ3,8B,3.9V,3.7-4.1V,500mW,D		R103	2007-001039	R-CHIP:56KOHM,5%,1/10W,DA,TP,2012	
ZD401	0403-000357	DIODE-ZENER;UZ25,6BM,5.6V,5.4-5.8V,500mW,D		R102	2007-001039	R-CHIP:56KOHM,5%,1/10W,DA,TP,2012	
Q302	0501-000010	TR-SMALL SIGNAL;KSC1008,NPN,800mW,TO-92,		R101	2007-001039	R-CHIP:56KOHM,5%,1/10W,DA,TP,2012	
Q101	0501-000314	TR-SMALL SIGNAL;KSA812,PNP,150mW,SOT-23,		R115	2007-001177	R-CHIP:8.2KOHM,5%,1/10W,DA,TP,2012	
Q301	0501-000610	TR-SMALL SIGNAL;KSA928A-Y,PNP,1W,TO-92L,		R112	2007-001195	R-CHIP:820KOHM,5%,1/10W,DA,TP,2012	
IC201	0904-001524	IC-DSP;SL9290,-,QFF48P,472MIL,16.934		R127	2007-001039	R-CHIP:56KOHM,5%,1/10W,DA,TP,2012	
IC301	1003-000179	IC-MOTOR DRIVER;KA9258D,SOP,28P,-,SINGLE		R119	2007-001208	R-CHIP:82KOHM,5%,1/10W,DA,TP,2012	
IC101	1204-001799	IC-ASP;KB9226,LQFP48P,383MIL,PLASTIC		R106	2007-001208	R-CHIP:82KOHM,5%,1/10W,DA,TP,2012	
R502L	2001-000281	R-CARBON;100ohm,5%,1/8W,AA,TP,1.8x3.2mm		R105	2007-001208	R-CHIP:820OHM,5%,1/10W,DA,TP,2012	
R805	2001-000429	R-CARBON;1Kohm,5%,1/8W,AA,TP,1.8x3.2mm		R107	2007-001216	R-CHIP:820OHM,5%,1/10W,DA,TP,2012	
R804	2001-000429	R-CARBON;1Kohm,5%,1/8W,AA,TP,1.8x3.2mm		R301	2008-000140	R-FUSIBLE;2.2ohm,5%,1/2W,AA,TP,3.5x9.4mm	
R213	2001-000429	R-CARBON;1Kohm,5%,1/8W,AA,TP,1.8x3.2mm		C205	2203-000203	C-CERAMIC,CHIP;100nF,10%,16V,X7R,TP,2012	
R212	2001-000429	R-CARBON;1Kohm,5%,1/8W,AA,TP,1.8x3.2mm		C211	2203-000203	C-CERAMIC,CHIP;100nF,10%,16V,X7R,TP,2012	
R211	2001-000429	R-CARBON;1Kohm,5%,1/8W,AA,TP,1.8x3.2mm		C213	2203-000203	C-CERAMIC,CHIP;100nF,10%,16V,X7R,TP,2012	
R205	2001-000429	R-CARBON;1Kohm,5%,1/8W,AA,TP,1.8x3.2mm		C216	2203-000203	C-CERAMIC,CHIP;100nF,10%,16V,X7R,TP,2012	
OR806	2001-000429	R-CARBON;1Kohm,5%,1/8W,AA,TP,1.8x3.2mm		C218	2203-000203	C-CERAMIC,CHIP;100nF,10%,16V,X7R,TP,2012	
R803	2001-000515	R-CARBON;220ohm,5%,1/8W,AA,TP,1.8x3.2mm		C220	2203-000203	C-CERAMIC,CHIP;100nF,10%,16V,X7R,TP,2012	
R206	2001-000515	R-CARBON;220ohm,5%,1/8W,AA,TP,1.8x3.2mm		C402	2203-000203	C-CERAMIC,CHIP;100nF,10%,16V,X7R,TP,2012	
R302	2001-001006	R-CARBON;82ohm,5%,1/8W,AA,TP,1.8x3.2mm		C204	2203-000203	C-CERAMIC,CHIP;100nF,10%,16V,X7R,TP,2012	
R114	2007-000001	R-CHIP;68KOHM,5%,1/10W,DA,TP,2012		C115	2203-000203	C-CERAMIC,CHIP;100nF,10%,16V,X7R,TP,2012	
J46	2007-000029	R-CHIP;0OHM,5%,1/10W,DA,TP,2012		C116	2203-000203	C-CERAMIC,CHIP;100nF,10%,16V,X7R,TP,2012	
J44	2007-000029	R-CHIP;0OHM,5%,1/10W,DA,TP,2012		C118	2203-000203	C-CERAMIC,CHIP;100nF,10%,16V,X7R,TP,2012	
J43	2007-000029	R-CHIP;0OHM,5%,1/10W,DA,TP,2012		C124	2203-000203	C-CERAMIC,CHIP;100nF,10%,16V,X7R,TP,2012	
J42	2007-000029	R-CHIP;0OHM,5%,1/10W,DA,TP,2012		C132	2203-000203	C-CERAMIC,CHIP;100nF,10%,16V,X7R,TP,2012	
J35	2007-000029	R-CHIP;0OHM,5%,1/10W,DA,TP,2012		C130	2203-000203	C-CERAMIC,CHIP;100nF,10%,16V,X7R,TP,2012	
J36	2007-000029	R-CHIP;0OHM,5%,1/10W,DA,TP,2012		C129	2203-000203	C-CERAMIC,CHIP;100nF,10%,16V,X7R,TP,2012	
J41	2007-000029	R-CHIP;0OHM,5%,1/10W,DA,TP,2012		C401	2203-000260	C-CERAMIC,CHIP;10nF,10%,50V,X7R,TP,2012	
J3	2007-000033	R-CHIP;0OHM,5%,1/8W,DA,TP,3216		C207	2203-000260	C-CERAMIC,CHIP;10nF,10%,50V,X7R,TP,2012	
J25	2007-000033	R-CHIP;0OHM,5%,1/8W,DA,TP,3216		C134	2203-000260	C-CERAMIC,CHIP;10nF,10%,50V,X7R,TP,2012	
J24	2007-000033	R-CHIP;0OHM,5%,1/8W,DA,TP,3216		C103	2203-000260	C-CERAMIC,CHIP;10nF,10%,50V,X7R,TP,2012	
J23	2007-000033	R-CHIP;0OHM,5%,1/8W,DA,TP,3216		C105	2203-000260	C-CERAMIC,CHIP;10nF,10%,50V,X7R,TP,2012	
J22	2007-000033	R-CHIP;0OHM,5%,1/8W,DA,TP,3216		C121	2203-000260	C-CERAMIC,CHIP;10nF,10%,50V,X7R,TP,2012	
J4	2007-000033	R-CHIP;0OHM,5%,1/8W,DA,TP,3216		C124	2203-000347	C-CERAMIC,CHIP;150nF,10%,50V,NPO,TP,2012	
J9	2007-000033	R-CHIP;0OHM,5%,1/8W,DA,TP,3216		JW9<->JW10	2203-000477	C-CERAMIC,CHIP;1uF,+80-20%,16V,Y5V,TP,20	
J8	2007-000033	R-CHIP;0OHM,5%,1/8W,DA,TP,3216		C126	2203-000495	C-CERAMIC,CHIP;2.2nF,10%,50V,X7R,TP,2012	
J7	2007-000033	R-CHIP;0OHM,5%,1/8W,DA,TP,3216		C127	2203-000595	C-CERAMIC,CHIP;0.22nF,5%,50V,NPO,TP,2012	
J6	2007-000033	R-CHIP;0OHM,5%,1/8W,DA,TP,3216		C119	2203-000802	C-CERAMIC,CHIP;33nF,10%,50V,X7R,TP,2012	
J5	2007-000033	R-CHIP;0OHM,5%,1/8W,DA,TP,3216		C128	2203-000802	C-CERAMIC,CHIP;33nF,10%,50V,X7R,TP,2012	
J15	2007-000033	R-CHIP;0OHM,5%,1/8W,DA,TP,3216		C125	2203-000840	C-CERAMIC,CHIP;0.39nF,5%,50V,NPO,TP,2012	
J13	2007-000033	R-CHIP;0OHM,5%,1/8W,DA,TP,3216		C111	2203-000892	C-CERAMIC,CHIP;4.7nF,10%,50V,X7R,TP,2012	
J12	2007-000033	R-CHIP;0OHM,5%,1/8W,DA,TP,3216		C112	2203-000892	C-CERAMIC,CHIP;4.7nF,10%,50V,X7R,TP,2012	
J10	2007-000033	R-CHIP;0OHM,5%,1/8W,DA,TP,3216		C135	2203-000919	C-CERAMIC,CHIP;470nF,+80-20%,16V,Y5V,TP	
J1	2007-000033	R-CHIP;0OHM,5%,1/8W,DA,TP,3216		C120	2203-000919	C-CERAMIC,CHIP;470nF,+80-20%,16V,Y5V,TP	
J16	2007-000033	R-CHIP;0OHM,5%,1/8W,DA,TP,3216		C109	2203-001026	C-CERAMIC,CHIP;0.004nF,0.25pF,50V,SL,TP	
J20	2007-000033	R-CHIP;0OHM,5%,1/8W,DA,TP,3216		C124A	2203-001063	C-CERAMIC,CHIP;56nF,10%,16V,X7R,TP,1608,	
J2	2007-000033	R-CHIP;0OHM,5%,1/8W,DA,TP,3216		C122	2203-001137	C-CERAMIC,CHIP;68nF,+80-20%,50V,Y5V,TP,2	
J19	2007-000033	R-CHIP;0OHM,5%,1/8W,DA,TP,3216		C106	2203-001137	C-CERAMIC,CHIP;68nF,+80-20%,50V,Y5V,TP,2	
J18	2007-000033	R-CHIP;0OHM,5%,1/8W,DA,TP,3216		C203	2203-001223	C-CERAMIC,CHIP;0.82nF,10%,50V,X7R,TP,201	
J17	2007-000033	R-CHIP;0OHM,5%,1/8W,DA,TP,3216		C502R	2203-001537	C-CERAMIC,CHIP;1nF,10%,50V,X7R,TP,2012	
R501L	2007-000282	R-CHIP;100KOHM,5%,1/10W,DA,TP,2012		C502L	2203-001537	C-CERAMIC,CHIP;1nF,10%,50V,X7R,TP,2012	
R501R	2007-000282	R-CHIP;100KOHM,5%,1/10W,DA,TP,2012		C117	2203-001537	C-CERAMIC,CHIP;1nF,10%,50V,X7R,TP,2012	
R502R	2007-000290	R-CHIP;100OHM,5%,1/10W,DA,TP,2012		C102	2203-001537	C-CERAMIC,CHIP;1nF,10%,50V,X7R,TP,2012	
				C104	2203-001551	C-CERAMIC,CHIP;1.5nF,10%,50V,X7R,TP,2012	
				C202	2203-001619	C-CERAMIC,CHIP;0.027nF,5%,50V,NPO,TP,201	
				C201	2203-001619	C-CERAMIC,CHIP;0.027nF,5%,50V,NPO,TP,201	
				C123	2401-000407	C-AL;10uF,20%,16V,GPTP,3.5x5.2,5	
				C303	2401-001102	C-AL;330uF,20%,16V,GPTP,8x11.5mm,5	
				C301	2401-001102	C-AL;330uF,20%,16V,GPTP,8x11.5mm,5	
				C501R	2401-001238	C-AL;4.7uF,20%,25V,GP,3*5,2.5MM,TP	
				C501L	2401-001238	C-AL;4.7uF,20%,25V,GP,3*5,2.5MM,TP	
				C114	2401-001238	C-AL;4.7uF,20%,25V,GP,3*5,2.5MM,TP	

Location no.	Code no.	Description & Specification	Remarks	Location no.	Code no.	Description & Specification	Remarks
C210	2401-001934	C-AL:220uF20%, 6.3V/GP, 6.3x7,-		UD12	0401-000101	DIODE-SWITCHING;1N4148,100V,200mA,DO-35,	
C215	2401-001934	C-AL:220uF20%, 6.3V/GP, 6.3x7,-		VD8	0401-000101	DIODE-SWITCHING;1N4148,100V,200mA,DO-35,	
C217	2401-001934	C-AL:220uF20%, 6.3V/GP, 6.3x7,-		VD7	0401-000101	DIODE-SWITCHING;1N4148,100V,200mA,DO-35,	
C304	2401-001934	C-AL:220uF20%, 6.3V/GP, 6.3x7,-		VD5	0401-000101	DIODE-SWITCHING;1N4148,100V,200mA,DO-35,	
C131	2401-001934	C-AL:220uF20%, 6.3V/GP, 6.3x7,-		UD17	0401-000101	DIODE-SWITCHING;1N4148,100V,200mA,DO-35,	
C108	2401-001934	C-AL:220uF20%, 6.3V/GP, 6.3x7,-		UD15	0401-000101	DIODE-SWITCHING;1N4148,100V,200mA,DO-35,	
C107	2401-001934	C-AL:220uF20%, 6.3V/GP, 6.3x7,-		UD13	0401-000101	DIODE-SWITCHING;1N4148,100V,200mA,DO-35,	
C101	2401-001934	C-AL:220uF20%, 6.3V/GP, 6.3x7,-		FD1	0401-000101	DIODE-SWITCHING;1N4148,100V,200mA,DO-35,	
DL1	2701-000111	INDUCTOR-AXIAL,100uH,10%,2.5x3.4mm		AD2	0401-000101	DIODE-SWITCHING;1N4148,100V,200mA,DO-35,	
	AH59-01088B	SPEAKER SYSTEM;PSB7E,-,-----,ELS,-		AD13	0401-000101	DIODE-SWITCHING;1N4148,100V,200mA,DO-35,	
	AH92-01554A	ASSY PCB;MM-VB9,-		AD12	0401-000101	DIODE-SWITCHING;1N4148,100V,200mA,DO-35,	
				AD11	0401-000101	DIODE-SWITCHING;1N4148,100V,200mA,DO-35,	
				AD10	0401-000101	DIODE-SWITCHING;1N4148,100V,200mA,DO-35,	
RD4	0402-000157	DIODE-RECTIFIER;1N5402,200V,3A,DO-201AD,		AD1	0401-000101	DIODE-SWITCHING;1N4148,100V,200mA,DO-35,	
RD3	0402-000157	DIODE-RECTIFIER;1N5402,200V,3A,DO-201AD,		AD20	0401-000101	DIODE-SWITCHING;1N4148,100V,200mA,DO-35,	
RD2	0402-000157	DIODE-RECTIFIER;1N5402,200V,3A,DO-201AD,		AD9	0401-000101	DIODE-SWITCHING;1N4148,100V,200mA,DO-35,	
RD1	0402-000157	DIODE-RECTIFIER;1N5402,200V,3A,DO-201AD,		AD8	0401-000101	DIODE-SWITCHING;1N4148,100V,200mA,DO-35,	
RQ2	0502-000419	TR-POWER,-,PNP,251W,TO-220FBK,100-200		AD7	0401-000101	DIODE-SWITCHING;1N4148,100V,200mA,DO-35,	
RQ1	0503-001013	TR-DARLINGTON;2SD2494,NPN,60W,TO-3PBK,6		AD25	0401-000101	DIODE-SWITCHING;1N4148,100V,200mA,DO-35,	
ULD1	0601-001432	LED;ROUND,BLUE,3mm,455nm		AD4	0401-000101	DIODE-SWITCHING;1N4148,100V,200mA,DO-35,	
ULD2	0601-001432	LED;ROUND,BLUE,3mm,455nm		AD5	0401-000101	DIODE-SWITCHING;1N4148,100V,200mA,DO-35,	
ULD6	0601-001432	LED;ROUND,BLUE,3mm,455nm		VD6	0401-000133	DIODE-SWITCHING;RLS4148,100V,200MA,SOD-8	
QJACK1	0603-001069	OPTIC TRANSMITTER;5V,8Mbps,-,-17dBm,660n		UD2	0401-000133	DIODE-SWITCHING;RLS4148,100V,200MA,SOD-8	
AIC1	1201-001026	IC-POWER AMP;7265,ZIP,1P,19.6MIL,DUAL,1		UD14	0401-000133	DIODE-SWITCHING;RLS4148,100V,200MA,SOD-8	
RIC1	1203-000242	IC-POSIFIXED REG.;7812,TO-220,3P,-,PLAS		UD1	0401-000133	DIODE-SWITCHING;RLS4148,100V,200MA,SOD-8	
RIC2	1203-000276	IC-POSIFIXED REG.;7805,TO-220,3P,-,PLAS		RD14	0402-000127	DIODE-RECTIFIER;1N4002,100V,1A,DO-41,TP	
RR1	2003-000556	R-METAL OXIDE(S);2.2ohm,5%,2W,AA,TP4x12		RD15	0402-000127	DIODE-RECTIFIER;1N4002,100V,1A,DO-41,TP	
RR2	2003-000701	R-METAL OXIDE(S);470ohm,5%,2W,AA,TP4x12		RD17	0402-000127	DIODE-RECTIFIER;1N4002,100V,1A,DO-41,TP	
PC2	2201-000546	C-CERAMIC,DISC;4.7nF20%,400V,Y5U,BK,16x		RD18	0402-000127	DIODE-RECTIFIER;1N4002,100V,1A,DO-41,TP	
PC1	2201-000546	C-CERAMIC,DISC;4.7nF20%,400V,Y5U,BK,16x		RD9	0402-000127	DIODE-RECTIFIER;1N4002,100V,1A,DO-41,TP	
AC3	2401-001883	C-AL;1000uF20%,25V,GPBK,16x25mm,5		RD10	0402-000127	DIODE-RECTIFIER;1N4002,100V,1A,DO-41,TP	
AC3L	2401-001883	C-AL;1000uF20%,25V,GPBK,16x25mm,5		AD1L	0402-000127	DIODE-RECTIFIER;1N4002,100V,1A,DO-41,TP	
AC3R	2401-001883	C-AL;1000uF20%,25V,GPBK,16x25mm,5		AD1R	0402-000127	DIODE-RECTIFIER;1N4002,100V,1A,DO-41,TP	
RC4	2401-001942	C-AL;3300uF20%,35V,GPBK,18x35.5mm		AD3	0402-000127	DIODE-RECTIFIER;1N4002,100V,1A,DO-41,TP	
RC2	2401-002258	C-AL;4700uF20%,50V,GP,-,22x40mm,5m		CD1	0402-000127	DIODE-RECTIFIER;1N4002,100V,1A,DO-41,TP	
UX2	2801-001394	CRYSTAL-UNIT;32.768KHz,20ppm,28-AA,Y,12.5		CD2	0402-000127	DIODE-RECTIFIER;1N4002,100V,1A,DO-41,TP	
UX1	2802-001157	RESONATOR-CERAMIC;6MHz,-,BK,8X5.5X3MM		RD6	0402-000151	DIODE-RECTIFIER;1N5392,100V,1.5A,DO-15,T	
OBF1	2901-001139	FILTER-EMI ON BOARD;50V,5A,-,390PF,7X2		RD7	0402-000151	DIODE-RECTIFIER;1N5392,100V,1.5A,DO-15,T	
	3103-001105	FAN-DC;12V,100MA,4000RPM,-,1.33MMH20		RD8	0402-000151	DIODE-RECTIFIER;1N5392,100V,1.5A,DO-15,T	
USW31	3409-001119	SWITCH-DETECTOR;5V DC,1.0A,DPST,30gf,-		RD5	0402-000151	DIODE-RECTIFIER;1N5392,100V,1.5A,DO-15,T	
PF1	3601-000170	FUSE-CARTRIDGE;250V,1.6A,TIME-LAG,GLASS,		RD13	0402-000151	DIODE-RECTIFIER;1N5392,100V,1.5A,DO-15,T	
PF4	3601-000282	FUSE;250V,4A,TIME-LAG,GLASS,5.2x20mm		RD12	0402-000151	DIODE-RECTIFIER;1N5392,100V,1.5A,DO-15,T	
PF2	3601-000318	FUSE-CARTRIDGE;250V,800mA,TIME-LAG,GLASS		RD11	0402-000151	DIODE-RECTIFIER;1N5392,100V,1.5A,DO-15,T	
FWA2	3708-001094	CONNECTOR-FPC/FFC/PIC;13P,1.25mm,STRAIGH		RZD3	0403-000354	DIODE-ZENER;UZ5.1B,5.1V,4.8-5.4V,500mW,D	
FWA4	3708-001195	CONNECTOR-FPC/FFC/PIC;27P,1.25mm,STRAIGH		FZD1	0403-000372	DIODE-ZENER;UZ9.1BM,9.1V,8.7-9.4V,500mW,D	
UWA6	3708-001212	CONNECTOR-FPC/FFC/PIC;27P,1.25mm,STRAIGH		RZD2	0403-000390	DIODE-ZENER;UZP33B,33V,31.4-34.6V,1W,DO-	
UWA9	3708-001723	CONNECTOR-FPC/FFC/PIC;17P,1.25MM,ANGLE,S		RZD4	0403-000396	DIODE-ZENER;UZP6.8B,6.8V,6.4-7.2V,1W,DO-	
PWA1	3711-000190	CONNECTOR-HEADER;1WALL,2P,1R,7.92mm,STRA		RZD1	0403-001009	DIODE-ZENER;UZP27BHCC,27V,27-30V,1W,DO-4	
QWA3	3711-000820	CONNECTOR-HEADER;BOX,2P,1R,2.5mm,STRAIGH		JQ4	0501-000010	TR-SMALL SIGNAL,KSC1008,NPN,800mW,TO-92,	
UWA10	3711-000826	CONNECTOR-HEADER;BOX,2P,1R,2mm,ANGLE,SN		AQ6	0501-000010	TR-SMALL SIGNAL,KSC1008,NPN,800mW,TO-92,	
UWA4	3711-000826	CONNECTOR-HEADER;BOX,2P,1R,2mm,ANGLE,SN		AQ5	0501-000010	TR-SMALL SIGNAL,KSC1008,NPN,800mW,TO-92,	
QWA2	3711-000907	CONNECTOR-HEADER;BOX,3P,1R,2mm,STRAIGHT,		AQ3	0501-000010	TR-SMALL SIGNAL,KSC1008,NPN,800mW,TO-92,	
FWA3	3711-000907	CONNECTOR-HEADER;BOX,3P,1R,2mm,STRAIGHT,		QQ1	0501-000294	TR-SMALL SIGNAL,KSAT08,-Y,PNP,800mW,TO-92	
UWA1	3711-000967	CONNECTOR-HEADER;BOX,4P,1R,2mm,ANGLE,SN		JQ3	0501-000398	TR-SMALL SIGNAL,KSC945,NPN,250mW,TO-92,T	
AWA1	3711-001011	CONNECTOR-HEADER;BOX,5P,1R,2.5mm,STRAIGH		RQ5	0501-000398	TR-SMALL SIGNAL,KSC945,NPN,250mW,TO-92,T	
PWA2	3711-001098	CONNECTOR-HEADER;BOX,7P,1R,2.5mm,STRAIGH		UQ1	0501-000398	TR-SMALL SIGNAL,KSC945,NPN,250mW,TO-92,T	
FWA1	3711-001137	CONNECTOR-HEADER;BOX,8P,1R,2mm,STRAIGHT,		UQ3	0501-000398	TR-SMALL SIGNAL,KSC945,NPN,250mW,TO-92,T	
SPK JACK	3716-001191	TERMINAL-BLOCK;SOLDER,4P,9.1MM,60V,7A		UQ5	0501-000398	TR-SMALL SIGNAL,KSC945,NPN,250mW,TO-92,T	
AUX JACK	3722-000377	JACK-PIN;4P2C,3.5mm,SN,BLK,#16-22		JQ2R	0501-000398	TR-SMALL SIGNAL,KSC945,NPN,250mW,TO-92,T	
HJACK1	3722-001588	JACK-PHONE;7P,3.6PIAG,BLK,-		CQ1	0501-000398	TR-SMALL SIGNAL,KSC945,NPN,250mW,TO-92,T	
	AH07-00044A	VF DISPLAY;HNA-09MS17T,W2000,29°66.9°22,		CQ2	0501-000398	TR-SMALL SIGNAL,KSC945,NPN,250mW,TO-92,T	
JLF1L	AH26-10002W	TRANS TRAP-COIL;BIAS-TRAP105K,BIAS-TRAP,		QJ1L	0501-000398	TR-SMALL SIGNAL,KSC945,NPN,250mW,TO-92,T	
JLF1R	AH26-10002W	TRANS TRAP-COIL;BIAS-TRAP105K,BIAS-TRAP,		QJ1R	0501-000398	TR-SMALL SIGNAL,KSC945,NPN,250mW,TO-92,T	
JT1	AH26-10003C	TRANS TRAP-COIL;PCHNS-5371EQJ,BIAS-TRAP,		QJ2L	0501-000398	TR-SMALL SIGNAL,KSC945,NPN,250mW,TO-92,T	
PL2	AH27-10001F	COIL-CHOKO;27uH,K,Q30,-,-,DR(6.5°7.5),-,		QJ2	0501-000407	TR-SMALL SIGNAL,KSD471A-Y,NPN,800mW,TO-9	
PL1	AH27-10001F	COIL-CHOKO;27uH,K,Q30,-,-,DR(6.5°7.5),-,		FQ1R	0501-000407	TR-SMALL SIGNAL,KSD471A-Y,NPN,800mW,TO-9	
AL3R	AH27-90001A	COIL-SPRING;-2.2uH,-,-,SPRING,-,-,-,-		FQ1L	0501-000407	TR-SMALL SIGNAL,KSD471A-Y,NPN,800mW,TO-9	
AL3L	AH27-90001A	COIL-SPRING;-2.2uH,-,-,SPRING,-,-,-,-		AQ1R	0501-000407	TR-SMALL SIGNAL,KSD471A-Y,NPN,800mW,TO-9	
AL2R	AH27-90001A	COIL-SPRING;-2.2uH,-,-,SPRING,-,-,-,-		AQ1L	0501-000407	TR-SMALL SIGNAL,KSD471A-Y,NPN,800mW,TO-9	
AL2L	AH27-90001A	COIL-SPRING;-2.2uH,-,-,SPRING,-,-,-,-		RQ6	0501-000610	TR-SMALL SIGNAL,KSAG28A-Y,PNP,1W,TO-92L,	
	AH31-10021A	MOTOR-DC;RF-500TB,9VDC/130mA,		RQ3	0501-000610	TR-SMALL SIGNAL,KSAG28A-Y,PNP,1W,TO-92L,	
CWA1	AH39-00019A	LEAD CONNECTOR ASSY;-GT201-11,35023,11P		JQ2	0501-000610	TR-SMALL SIGNAL,KSAG28A-Y,PNP,1W,TO-92L,	
UWA3	AH39-00085A	LEAD CONNECTOR ASSY;-51004,5295,3P,150M		CQ4	0501-000610	TR-SMALL SIGNAL,KSAG28A-Y,PNP,1W,TO-92L,	
QWA1	AH39-00096B	LEAD CONNECTOR ASSY;RXD-DV9,#1007,28,AWG		CQ3	0501-000610	TR-SMALL SIGNAL,KSAG28A-Y,PNP,1W,TO-92L,	
UWA14	AH39-00109A	LEAD CONNECTOR ASSY;-5295,51004,2P,140M		AQ8	0504-000118	TR-DIGITAL;KSR1003,NPN,300MW,22K/22K,TO-	
UWA7	AH39-00109A	LEAD CONNECTOR ASSY;-5295,51004,2P,140M		QJ10	0504-000118	TR-DIGITAL;KSR1003,NPN,300MW,22K/22K,TO-	
GND	AH39-00134A	WIRE HARNESS;-RING,1007#24,60MM,BLK,-,-		RQ4	0504-000118	TR-DIGITAL;KSR1003,NPN,300MW,22K/22K,TO-	
UWA2	AH39-00352T	LEAD CONNECTOR ASSY;MM-B7,1007#22,-,5P2		AQ1	0504-000118	TR-DIGITAL;KSR1003,NPN,300MW,22K/22K,TO-	
RWA1	AH39-00352U	LEAD CONNECTOR ASSY;MM-B7,1007#22,-,7P1		AQ4	0504-000118	TR-DIGITAL;KSR1003,NPN,300MW,22K/22K,TO-	
QWA1	AH39-00352V	LEAD CONNECTOR ASSY;MM-B7,1007#28,-,3P2		AQ7	0504-000118	TR-DIGITAL;KSR1003,NPN,300MW,22K/22K,TO-	
UWA11	AH39-00352W	LEAD CONNECTOR ASSY;MM-B7,1007#28,-,3P2		UQ6	0504-001003	TR-DIGITAL;KSR2003,PNP,300MW,22K/22K,TO-	
JWA1	AH39-00352X	LEAD CONNECTOR ASSY;MM-B7,1533#28,-,6P2		JQ1	0504-001003	TR-DIGITAL;KSR2003,PNP,300MW,22K/22K,TO-	
UWA5	AH39-00352Z	LEAD CONNECTOR ASSY;MM-B7,1007#28,-,4P1		FQ1	0504-001003	TR-DIGITAL;KSR2003,PNP,300MW,22K/22K,TO-	
UWA15	AH39-00419A	LEAD CONNECTOR ASSY;MM-B7,UL2486(TA),-,4		AQ2	0504-001003	TR-DIGITAL;KSR2003,PNP,300MW,22K/22K,TO-	
UWA16	AH39-00419A	LEAD CONNECTOR ASSY;MM-B7,UL2486(TA),-,4		ULD3	0601-001238	LED;ROUND,RED,3.1mm,697nm	
UEYE	AH59-60001J	MODULE REMOCON;GP1U271R,38KHz,-,MESH,-,		JIC1	1201-001819	IC-PREAMP,-,-,44P,-,-,PLASTIC,18V,625M	
	AH61-01075A	HOLDER-VFD;MM-Z87,ABS,94HB,-,-,-,-,-		FIC1	1204-001776	IC-SOUND PROCESSOR;TDA7442D,SOP28P,295M	
	AH66-10025A	PULLEY-MOTOR;-POM,-,CMS-100		JR8L	2001-000008	R-CARBON;15Kohm,5%,1/8W,AA,TP,1.8x3.2mm	
	AH94-00998A	ASSY CHIP;MM-VB9,-		JR8R	2001-000008	R-CARBON;15Kohm,5%,1/8W,AA,TP,1.8x3.2mm	
UD11	0401-000101	DIODE-SWITCHING;1N4148,100V,200mA,DO-35,		RR9	2001-000028	R-CARBON(S);100OHM,5%,1/2W,AA,TP,2.4x6.4	
RD16	0401-000101	DIODE-SWITCHING;1N4148,100V,200mA,DO-35,		RR10	2001-000028	R-CARBON(S);100OHM,5%,1/2W,AA,TP,2.4x6.4	
QD2	0401-000101	DIODE-SWITCHING;1N4148,100V,200mA,DO-35,		RR8	2001-000052	R-CARBON(S);3.3Kohm,5%,1/2W,AA,TP,2.4x6	
QD1	0401-000101	DIODE-SWITCHING;1N4148,100V,200mA,DO-35,		RR7	2001-000052	R-CARBON(S);3.3Kohm,5%,1/2W,AA,TP,2.4x6	
JD1	0401-000101	DIODE-SWITCHING;1N4148,100V,200mA,DO-35,		AR13	2001-000052	R-CARBON(S);3.3Kohm,5%,1/2W,AA,TP,2.4x6	
FD2	0401-000101	DIODE-SWITCHING;1N4148,100V,200mA,DO-35,					

Samsung Electronics

3-3

Location no.	Code no.	Description & Specification	Remarks	Location no.	Code no.	Description & Specification	Remarks
AR2L	2007-000493	R-CHIP:2.2KOHM,5%,1/10W,DA,TP2012		UC3	2203-000979	C-CERAMIC,CHIP:47nF,10%,50V,X7R,TP2012	
AR3R	2007-000493	R-CHIP:2.2KOHM,5%,1/10W,DA,TP2012		UC12	2203-000979	C-CERAMIC,CHIP:47nF,10%,50V,X7R,TP2012	
FR1	2007-000493	R-CHIP:2.2KOHM,5%,1/10W,DA,TP2012		UC10	2203-000979	C-CERAMIC,CHIP:47nF,10%,50V,X7R,TP2012	
FR6L	2007-000493	R-CHIP:2.2KOHM,5%,1/10W,DA,TP2012		FC10L	2203-001036	C-CERAMIC,CHIP:5.6nF,10%,50V,X7R,TP2012	
UR88	2007-000565	R-CHIP:220KOHM,5%,1/10W,DA,TP2012		FC10R	2203-001036	C-CERAMIC,CHIP:5.6nF,10%,50V,X7R,TP2012	
FR12R	2007-000565	R-CHIP:220KOHM,5%,1/10W,DA,TP2012		JC1R	2203-001132	C-CERAMIC,CHIP:0.68nF,5%,50V,NP0,TP2012	
FR12L	2007-000565	R-CHIP:220KOHM,5%,1/10W,DA,TP2012		JC1L	2203-001132	C-CERAMIC,CHIP:0.68nF,5%,50V,NP0,TP2012	
UR25	2007-000586	R-CHIP:22KOHM,5%,1/10W,DA,TP2012		JC20R	2203-001537	C-CERAMIC,CHIP:1nF,10%,50V,X7R,TP2012	
JR2R	2007-000586	R-CHIP:22KOHM,5%,1/10W,DA,TP2012		JC20L	2203-001537	C-CERAMIC,CHIP:1nF,10%,50V,X7R,TP2012	
JR2L	2007-000586	R-CHIP:22KOHM,5%,1/10W,DA,TP2012		AC2R	2203-001537	C-CERAMIC,CHIP:1nF,10%,50V,X7R,TP2012	
FR3R	2007-000586	R-CHIP:22KOHM,5%,1/10W,DA,TP2012		AC2L	2203-001537	C-CERAMIC,CHIP:1nF,10%,50V,X7R,TP2012	
FR3L	2007-000586	R-CHIP:22KOHM,5%,1/10W,DA,TP2012		UC2	2203-001611	C-CERAMIC,CHIP:0.022nF,5%,50V,NP0,TP201	
AR1	2007-000586	R-CHIP:22KOHM,5%,1/10W,DA,TP2012		UC1	2203-001611	C-CERAMIC,CHIP:0.022nF,5%,50V,NP0,TP201	
UR56	2007-000686	R-CHIP:3.3KOHM,5%,1/10W,DA,TP2012		AC12R	2301-000375	C-FILM,PEF:100nF,5%,50V,TP11x12.5x6.5,7	
MR63	2007-000686	R-CHIP:3.3KOHM,5%,1/10W,DA,TP2012		AC12L	2301-000375	C-FILM,PEF:100nF,5%,50V,TP11x12.5x6.5,7	
MR64	2007-000872	R-CHIP:4.7KOHM,5%,1/10W,DA,TP2012		JC3L	2301-000379	C-FILM,PEF:10nF,10%,50V,TP6x12x3.5mm,-	
MR66	2007-000872	R-CHIP:4.7KOHM,5%,1/10W,DA,TP2012		JC3R	2301-000379	C-FILM,PEF:10nF,10%,50V,TP6x12x3.5mm,-	
RR30	2007-000872	R-CHIP:4.7KOHM,5%,1/10W,DA,TP2012		JC7	2301-000390	C-FILM,PEF:15nF,10%,50V,TP7x12x3.5mm,-	
UR19	2007-000872	R-CHIP:4.7KOHM,5%,1/10W,DA,TP2012		JC6	2301-000404	C-FILM,PEF:2.2nF,10%,50V,TP5.5x12x3mm,-	
UR32	2007-000872	R-CHIP:4.7KOHM,5%,1/10W,DA,TP2012		JC9	2301-000407	C-FILM,PEF:2.2nF,10%,50V,TP5.5x12x3mm,-	
UR57	2007-000872	R-CHIP:4.7KOHM,5%,1/10W,DA,TP2012		RC10	2401-000240	C-AL:100uF,20%,10V,GP,TP5x11.5	
AR14	2007-000872	R-CHIP:4.7KOHM,5%,1/10W,DA,TP2012		OC1	2401-000240	C-AL:100uF,20%,10V,GP,TP5x11.5	
JR3L	2007-000872	R-CHIP:4.7KOHM,5%,1/10W,DA,TP2012		USC1	2401-000243	C-AL:100uF,20%,10V,GP,TP6.3x7.5	
JR3R	2007-000872	R-CHIP:4.7KOHM,5%,1/10W,DA,TP2012		UC4	2401-000244	C-AL:100uF,20%,10V,GP,TP6.3x7.5	
JR4	2007-000872	R-CHIP:4.7KOHM,5%,1/10W,DA,TP2012		RC11	2401-000325	C-AL:100uF,20%,35V,GP,-8x11.5,3.5mm	
JR4L	2007-000872	R-CHIP:4.7KOHM,5%,1/10W,DA,TP2012		RC8	2401-000357	C-AL:100uF,0.2,50V,GP,8*12.5MM,SSL	
JR4R	2007-000872	R-CHIP:4.7KOHM,5%,1/10W,DA,TP2012		FC1	2401-000419	C-AL:100uF,20%,16V,GP,-5X11.5	
JR18	2007-000941	R-CHIP:47KOHM,5%,1/10W,DA,TP2012		AC6	2401-000419	C-AL:100uF,20%,16V,GP,-5X11.5	
JR17	2007-000941	R-CHIP:47KOHM,5%,1/10W,DA,TP2012		AC5	2401-000419	C-AL:100uF,20%,16V,GP,-5X11.5	
AR18	2007-000941	R-CHIP:47KOHM,5%,1/10W,DA,TP2012		AC1	2401-000419	C-AL:100uF,20%,16V,GP,-5X11.5	
FR8R	2007-000981	R-CHIP:5.6KOHM,5%,1/10W,DA,TP2012		RC7	2401-000475	C-AL:10uF,20%,50V,GP,TP5x11mm,5mm	
FR8L	2007-000981	R-CHIP:5.6KOHM,5%,1/10W,DA,TP2012		RC5	2401-000795	C-AL:220uF,20%,16V,GP,TP8x12mm,5mm	
UR5	2007-001024	R-CHIP:560KOHM,5%,1/10W,DA,TP2012		AC2	2401-000970	C-AL:22uF,20%,50V,WT,TP5x11.5	
AR4R	2007-001039	R-CHIP:56KOHM,5%,1/10W,DA,TP2012		UC5	2401-001355	C-AL:470uF,20%,10V,GP,TP8x11.5mm,5	
AR4L	2007-001039	R-CHIP:56KOHM,5%,1/10W,DA,TP2012		RC25	2401-001364	C-AL:470uF,20%,16V,GP,TP10x12.5,5	
JR6L	2007-001071	R-CHIP:6.8KOHM,5%,1/10W,DA,TP2012		QC1	2401-001465	C-AL:47uF,20%,10V,GP,TP5x11mm,5mm	
JR6R	2007-001071	R-CHIP:6.8KOHM,5%,1/10W,DA,TP2012		UC9	2401-001511	C-AL:47uF,20%,16V,GP,6*7.5MM,TP	
JR9L	2007-001071	R-CHIP:6.8KOHM,5%,1/10W,DA,TP2012		RC9	2401-001572	C-AL:47uF,20%,50V,GP,TP6.3x11mm,5m	
JR9R	2007-001071	R-CHIP:6.8KOHM,5%,1/10W,DA,TP2012		AC50	2401-001572	C-AL:47uF,20%,50V,GP,TP6.3x11mm,5m	
JR10L	2007-001071	R-CHIP:6.8KOHM,5%,1/10W,DA,TP2012		CC1	2401-001895	C-AL:100uF,20%,16V,GP,6.3*11.5MM,TP	
JR10R	2007-001071	R-CHIP:6.8KOHM,5%,1/10W,DA,TP2012		QC2	2401-001895	C-AL:100uF,20%,16V,GP,6.3*11.5MM,TP	
JR5L	2007-001071	R-CHIP:6.8KOHM,5%,1/10W,DA,TP2012		JC8	2401-001895	C-AL:100uF,20%,16V,GP,6.3*11.5MM,TP	
JR5R	2007-001071	R-CHIP:6.8KOHM,5%,1/10W,DA,TP2012		JC3	2401-001895	C-AL:100uF,20%,16V,GP,6.3*11.5MM,TP	
UR58	2007-001177	R-CHIP:8.2KOHM,5%,1/10W,DA,TP2012		FC5	2401-001895	C-AL:100uF,20%,16V,GP,6.3*11.5MM,TP	
FR1R	2007-001177	R-CHIP:8.2KOHM,5%,1/10W,DA,TP2012		RC6	2401-001912	C-AL:1uF,20%,50V,GP,5*11.5mm,TP	
FR1L	2007-001177	R-CHIP:8.2KOHM,5%,1/10W,DA,TP2012		JC8R	2401-001912	C-AL:1uF,20%,50V,GP,5*11.5mm,TP	
UR3	2007-001654	R-CHIP:10MOHM,1%,1/10W,DA,TP201		JC8L	2401-001912	C-AL:1uF,20%,50V,GP,5*11.5mm,TP	
RR12	2008-000135	R-FUSIBLE:1ohm,5%,1/2W,AA,TP3.3x9mm		JC30	2401-001912	C-AL:1uF,20%,50V,GP,5*11.5mm,TP	
RR13	2008-000135	R-FUSIBLE:1ohm,5%,1/2W,AA,TP3.3x9mm		AC1L	2401-001912	C-AL:1uF,20%,50V,GP,5*11.5mm,TP	
CVR1	2103-000341	VR-SEMI:2Kohm,30%,1/10W,TOP		AC1R	2401-001912	C-AL:1uF,20%,50V,GP,5*11.5mm,TP	
VC1	2201-000161	C-CERAMIC,DISC:10nF,+80-20%,500V,Y5V,TP		JC1	2401-001912	C-AL:1uF,20%,50V,GP,5*11.5mm,TP	
RC3	2201-000161	C-CERAMIC,DISC:10nF,+80-20%,500V,Y5V,TP		UC54	2401-001931	C-AL:220nF,20%,50V,-TP,4x7mm,5	
RC1	2201-000161	C-CERAMIC,DISC:10nF,+80-20%,500V,Y5V,TP		UC8	2401-001952	C-AL:4.7uF,20%,50V,GP,TP5x7mm,5mm	
AC7R	2201-000546	C-CERAMIC,DISC:4.7nF,20%,400V,Y5U,BK,16x		UC7	2401-001952	C-AL:4.7uF,20%,50V,GP,TP5x7mm,5mm	
AC7L	2201-000546	C-CERAMIC,DISC:4.7nF,20%,400V,Y5U,BK,16x		UC6	2401-001952	C-AL:4.7uF,20%,50V,GP,TP5x7mm,5mm	
AC8L	2201-000565	C-CERAMIC,DISC:47nF,+80% -20% 50V Y5V 12		JC5R	2401-001954	C-AL:4.7uF,20%,50V,GP,TP5x11mm,5mm	
AC8R	2201-000565	C-CERAMIC,DISC:47nF,+80% -20% 50V Y5V 12		JC5L	2401-001954	C-AL:4.7uF,20%,50V,GP,TP5x11mm,5mm	
RC100	2201-000783	C-CERAMIC,DISC:100nF,+80-20%,50V,Y5V,TP		JC4	2401-001954	C-AL:4.7uF,20%,50V,GP,TP5x11mm,5mm	
FC8L	2202-000780	C-CERAMIC,MLC-AXIAL:100nF,+80-20%,50V,Y5		JC2	2401-001954	C-AL:4.7uF,20%,50V,GP,TP5x11mm,5mm	
JC6R	2202-000797	C-CERAMIC,MLC-AXIAL:10NF,30%,16V,Y5S,TP		JC2R	2401-001975	C-AL:47uF,20%,16V,GP,TP5x11mm,5mm	
AC4L	2202-000850	C-CERAMIC,MLC-AXIAL:2.2NF,20%,16V,Y5R		JC2L	2401-001975	C-AL:47uF,20%,16V,GP,TP5x11mm,5mm	
UC15	2202-000854	C-CERAMIC,MLC-AXIAL:47nF,30%,50V,Y5R,TP		FC6L	2401-002180	C-AL:2.2uF,20%,50V,GP,TP5x11mm,5mm	
JC4R	2203-000203	C-CERAMIC,CHIP:100nF,10%,16V,X7R,TP2012		FC5R	2401-002180	C-AL:2.2uF,20%,50V,GP,TP5x11mm,5mm	
JC4L	2203-000203	C-CERAMIC,CHIP:100nF,10%,16V,X7R,TP2012		FC5L	2401-002180	C-AL:2.2uF,20%,50V,GP,TP5x11mm,5mm	
FC9R	2203-000203	C-CERAMIC,CHIP:100nF,10%,16V,X7R,TP2012		FC4R	2401-002180	C-AL:2.2uF,20%,50V,GP,TP5x11mm,5mm	
FC9L	2203-000203	C-CERAMIC,CHIP:100nF,10%,16V,X7R,TP2012		FC6R	2401-002180	C-AL:2.2uF,20%,50V,GP,TP5x11mm,5mm	
FC8R	2203-000203	C-CERAMIC,CHIP:100nF,10%,16V,X7R,TP2012		FC7L	2401-002180	C-AL:2.2uF,20%,50V,GP,TP5x11mm,5mm	
FC24	2203-000239	C-CERAMIC,CHIP:0.1nF,5%,50V,NP0,TP2012		FC7R	2401-002180	C-AL:2.2uF,20%,50V,GP,TP5x11mm,5mm	
FC25	2203-000239	C-CERAMIC,CHIP:0.1nF,5%,50V,NP0,TP2012		JC9L	2401-002180	C-AL:2.2uF,20%,50V,GP,TP5x11mm,5mm	
FC26	2203-000239	C-CERAMIC,CHIP:0.1nF,5%,50V,NP0,TP2012		JC9R	2401-002180	C-AL:2.2uF,20%,50V,GP,TP5x11mm,5mm	
FC21	2203-000239	C-CERAMIC,CHIP:0.1nF,5%,50V,NP0,TP2012		AC4	2401-002180	C-AL:2.2uF,20%,50V,GP,TP5x11mm,5mm	
FC22	2203-000239	C-CERAMIC,CHIP:0.1nF,5%,50V,NP0,TP2012		FC11L	2401-002180	C-AL:2.2uF,20%,50V,GP,TP5x11mm,5mm	
FC23	2203-000239	C-CERAMIC,CHIP:0.1nF,5%,50V,NP0,TP2012		FC11R	2401-002180	C-AL:2.2uF,20%,50V,GP,TP5x11mm,5mm	
UC53	2203-000260	C-CERAMIC,CHIP:10nF,10%,50V,X7R,TP2012		FC2L	2401-002180	C-AL:2.2uF,20%,50V,GP,TP5x11mm,5mm	
UC53	2203-000260	C-CERAMIC,CHIP:10nF,10%,50V,X7R,TP2012		FC2R	2401-002180	C-AL:2.2uF,20%,50V,GP,TP5x11mm,5mm	
JC7R	2203-000260	C-CERAMIC,CHIP:10nF,10%,50V,X7R,TP2012		FC4L	2401-002180	C-AL:2.2uF,20%,50V,GP,TP5x11mm,5mm	
JC7L	2203-000260	C-CERAMIC,CHIP:10nF,10%,50V,X7R,TP2012		FC4	2401-002180	C-AL:2.2uF,20%,50V,GP,TP5x11mm,5mm	
JC6L	2203-000260	C-CERAMIC,CHIP:10nF,10%,50V,X7R,TP2012		FC3R	2401-002180	C-AL:2.2uF,20%,50V,GP,TP5x11mm,5mm	
JC10R	2203-000495	C-CERAMIC,CHIP:2.2nF,10%,50V,X7R,TP2012		FC3L	2401-002180	C-AL:2.2uF,20%,50V,GP,TP5x11mm,5mm	
JC10L	2203-000495	C-CERAMIC,CHIP:2.2nF,10%,50V,X7R,TP2012		HL1R	2701-000177	INDUCTOR-AXIAL:33uH,10%,2.5x3.4mm	
AC4R	2203-000495	C-CERAMIC,CHIP:2.2nF,10%,50V,X7R,TP2012		HL1L	2701-000177	INDUCTOR-AXIAL:33uH,10%,2.5x3.4mm	
FC2	2203-000595	C-CERAMIC,CHIP:0.22nF,5%,50V,NP0,TP2012		JL1	2701-000298	INDUCTOR-AXIAL:470uH,10%,4.2x9.8mm	
FC3	2203-000595	C-CERAMIC,CHIP:0.22nF,5%,50V,NP0,TP2012		QL1	2701-000298	INDUCTOR-AXIAL:470uH,10%,4.2x9.8mm	
JC10	2203-000595	C-CERAMIC,CHIP:0.22nF,5%,50V,NP0,TP2012		OB02	3301-000297	CORE-FERRITE BEAD:AA,3.6x1.2x5.7mm,1400	
JC11	2203-000595	C-CERAMIC,CHIP:0.22nF,5%,50V,NP0,TP2012		OB01	3301-000297	CORE-FERRITE BEAD:AA,3.6x1.2x5.7mm,1400	
AC5L	2203-000595	C-CERAMIC,CHIP:0.22nF,5%,50V,NP0,TP2012		USW3	3404-000165	SWITCH-TACT:12V/50mA,160gf,6x6mm,SPST	
AC5R	2203-000595	C-CERAMIC,CHIP:0.22nF,5%,50V,NP0,TP2012		USW4	3404-000165	SWITCH-TACT:12V/50mA,160gf,6x6mm,SPST	
FC1L	2203-000595	C-CERAMIC,CHIP:0.22nF,5%,50V,NP0,TP2012		USW5	3404-000165	SWITCH-TACT:12V/50mA,160gf,6x6mm,SPST	
FC1R	2203-000595	C-CERAMIC,CHIP:0.22nF,5%,50V,NP0,TP2012		USW6	3404-000165	SWITCH-TACT:12V/50mA,160gf,6x6mm,SPST	
UC52	2203-000609	C-CERAMIC,CHIP:22nF,10%,50V,X7R,TP2012		USW7	3404-000165	SWITCH-TACT:12V/50mA,160gf,6x6mm,SPST	
UC15	2203-000609	C-CERAMIC,CHIP:22nF,10%,50V,X7R,TP2012		USW8	3404-000165	SWITCH-TACT:12V/50mA,160gf,6x6mm,SPST	
OC3	2203-000609	C-CERAMIC,CHIP:22nF,10%,50V,X7R,TP2012		USW9	3404-000165	SWITCH-TACT:12V/50mA,160gf,6x6mm,SPST	
OC2	2203-000818	C-CERAMIC,CHIP:0.033nF,5%,50V,NP0,TP201		USW2	3404-000165	SWITCH-TACT:12V/50mA,160gf,6x6mm,SPST	

USU
USU
USU
USU
USU
PF4
PF3
PF2
UIC
OIC

ZD3
ZD4
Q30
Q10
Q30
IC2
IC3
IC6
R20
R50
R80
R80
R80
R80
R20
R21
R21
R11
J46
J44
J41
J42
J43
J35
J36
J37
J20
J24
J31

J32
J33
J25
J3
J22
J21
J8
J7
J6
J4
J14
J12
J11
J1
J2
J18
J17
J15
R50
R50
R13
R13
R12
R12
R11
R60
R60
R20
R40
R20
R30
R11
R20
R20
R12
R12
R11
R10
R10
R11
R10
R10
R12
R30
C60
C22
C61
C61
C60
C21
C11
C21
C21
C11
C11
C20
C13
C19
C40

05
24
37
38
91
92A
01A
57A
01X
26A
01P
34T

3103
3809
3809
3809
6501
AH2
AH3
AH3
AH3
AH4
AH4
AH5
AH5
AH8
AH8

AH92-01572A

[illegible]

Location no.	Code no.	Description & Specification	Remarks	Location no.	Code no.	Description & Specification	Remarks
C207	2203-000260	C-CERAMIC,CHIP,10nF,10%,50V,X7R,TP,2012		OWA1	3711-000907	CONNECTOR-HEADER,BOX,3P,1R,2mm,STRAIGHT,	
C134	2203-000260	C-CERAMIC,CHIP,10nF,10%,50V,X7R,TP,2012		FWA3	3711-000907	CONNECTOR-HEADER,BOX,3P,1R,2mm,STRAIGHT,	
C121	2203-000260	C-CERAMIC,CHIP,10nF,10%,50V,X7R,TP,2012		UWA1	3711-000967	CONNECTOR-HEADER,BOX,4P,1R,2mm,ANGLE,SN	
C103	2203-000260	C-CERAMIC,CHIP,10nF,10%,50V,X7R,TP,2012		AWA1	3711-001011	CONNECTOR-HEADER,BOX,5P,1R,2.5mm,STRAIGH	
C124	2203-000347	C-CERAMIC,CHIP,150nF,10%,50V,NP0,TP,2012		JWA1	3711-001062	CONNECTOR-HEADER,BOX,6P,1R,2mm,STRAIGHT,	
JW9<-JW10	2203-000477	C-CERAMIC,CHIP,1uF+80-20%,16V,Y5V,TP,20		PWA2	3711-001098	CONNECTOR-HEADER,BOX,7P,1R,2.5mm,STRAIGH	
C126	2203-000495	C-CERAMIC,CHIP,2.2nF,10%,50V,X7R,TP,2012		FWA1	3711-001137	CONNECTOR-HEADER,BOX,8P,1R,2mm,STRAIGHT,	
C127	2203-000595	C-CERAMIC,CHIP,0.22nF,5%,50V,NP0,TP,2012		SPK JACK	3716-001191	TERMINAL-BLOCK,SOLDER,4P,9.1MM,60V,7A	
C105	2203-000671	C-CERAMIC,CHIP,27nF,10%,50V,X7R,TP,2012		AUX JACK	3722-000377	JACK-PIN,4P/2C,3.5mm,SN,BLK,#16-22	
C128	2203-000802	C-CERAMIC,CHIP,33nF,10%,50V,X7R,TP,2012		HJACK1	3722-001588	JACK-PHONE;7P,3.6PI,AG,BLK,-	
C119	2203-000802	C-CERAMIC,CHIP,33nF,10%,50V,X7R,TP,2012			AH07-00044A	VF DISPLAY:HNA-09MS17T;W2000,29*6*9*22,	
C125	2203-000840	C-CERAMIC,CHIP,0.39nF,5%,50V,NP0,TP,2012		JLF1L	AH26-10002W	TRANS TRAP-COIL,BIAS-TRAP105K,BIAS-TRAP,	
C112	2203-000892	C-CERAMIC,CHIP,4.7nF,10%,50V,X7R,TP,2012		JLF1R	AH26-10002W	TRANS TRAP-COIL,BIAS-TRAP105K,BIAS-TRAP,	
C111	2203-000892	C-CERAMIC,CHIP,4.7nF,10%,50V,X7R,TP,2012		JT1	AH26-10003C	TRANS TRAP-COIL,PCBINS-5371EQJ,BIAS-TRAP,	
C120	2203-000919	C-CERAMIC,CHIP,470nF+80-20%,16V,Y5V,TP,		PL2	AH27-10001F	COIL-CHOKE;27uH,K,Q30,-,DR(6.5*7.5),-,	
C135	2203-000919	C-CERAMIC,CHIP,470nF+80-20%,16V,Y5V,TP,		PL1	AH27-10001F	COIL-CHOKE;27uH,K,Q30,-,DR(6.5*7.5),-,	
C109	2203-001026	C-CERAMIC,CHIP,0.04nF,0.25pF,50V,SLT,TP,		AL3R	AH27-90001A	COIL-SPRING;-2.2uH,-,SPRING,-,,-,,-	
C124A	2203-001063	C-CERAMIC,CHIP,56nF,10%,16V,X7R,TP,1608,		AL3L	AH27-90001A	COIL-SPRING;-2.2uH,-,SPRING,-,,-,,-	
C106	2203-001137	C-CERAMIC,CHIP,68nF+80-20%,50V,Y5V,TP,2		AL2R	AH27-90001A	COIL-SPRING;-2.2uH,-,SPRING,-,,-,,-	
C122	2203-001137	C-CERAMIC,CHIP,68nF+80-20%,50V,Y5V,TP,2		AL2L	AH27-90001A	COIL-SPRING;-2.2uH,-,SPRING,-,,-,,-	
C608	2203-001223	C-CERAMIC,CHIP,0.82nF,10%,50V,X7R,TP,201			AH31-10021A	MOTOR-DC,RF-500TB,9VDC/130mA,	
C605	2203-001223	C-CERAMIC,CHIP,0.82nF,10%,50V,X7R,TP,201		CWA1	AH39-00019A	LEAD CONNECTOR ASSY;-GT201-11,35023,11P	
C203	2203-001223	C-CERAMIC,CHIP,0.82nF,10%,50V,X7R,TP,201		UWA3	AH39-00085A	LEAD CONNECTOR ASSY;-51004,5295,3P,150M	
C502R	2203-001537	C-CERAMIC,CHIP,1nF,10%,50V,X7R,TP,2012			AH39-00096B	LEAD CONNECTOR ASSY;RXD-DV9,#1007,28,AWG	
C502L	2203-001537	C-CERAMIC,CHIP,1nF,10%,50V,X7R,TP,2012		UWA7	AH39-00109A	LEAD CONNECTOR ASSY;-5295,51004,2P,140M	
C117	2203-001537	C-CERAMIC,CHIP,1nF,10%,50V,X7R,TP,2012		UWA14	AH39-00109A	LEAD CONNECTOR ASSY;-5295,51004,2P,140M	
C102	2203-001537	C-CERAMIC,CHIP,1nF,10%,50V,X7R,TP,2012		GND	AH39-00134A	WIRE HARNESS;-RING,1007#24,60MM,BLK,-,-	
C104	2203-001551	C-CERAMIC,CHIP,1.5nF,10%,50V,X7R,TP,2012		UWA2	AH39-00352T	LEAD CONNECTOR ASSY;MM-B7,1007#22,-,5P,2	
C202	2203-001619	C-CERAMIC,CHIP,0.027nF,5%,50V,NP0,TP,201		RWA1	AH39-00352U	LEAD CONNECTOR ASSY;MM-B7,1007#22,-,7P,1	
C201	2203-001619	C-CERAMIC,CHIP,0.027nF,5%,50V,NP0,TP,201		QWA1	AH39-00352V	LEAD CONNECTOR ASSY;MM-B7,1007#28,-,3P,2	
C123	2401-000407	C-AL;10uF,20%,16V,GP,TP,3.5x5,2.5		UWA11	AH39-00352W	LEAD CONNECTOR ASSY;MM-B7,1007#28,-,3P,2	
C303	2401-001102	C-AL;330uF,20%,16V,GP,TP,8x11.5mm,5		JWA1	AH39-00352X	LEAD CONNECTOR ASSY;MM-B7,153#28,-,6P,2	
C301	2401-001102	C-AL;330uF,20%,16V,GP,TP,8x11.5mm,5		UWA5	AH39-00352Z	LEAD CONNECTOR ASSY;MM-B7,1007#28,-,4P,1	
C501R	2401-001238	C-AL;4.7uF,20%,25V,GP,3.5,2.5MM,TP		UWA16	AH39-00419A	LEAD CONNECTOR ASSY;MM-B7,UL2486(TA),-,4	
C501L	2401-001238	C-AL;4.7uF,20%,25V,GP,3.5,2.5MM,TP		UWA15	AH39-00419A	LEAD CONNECTOR ASSY;MM-B7,UL2486(TA),-,4	
C114	2401-001238	C-AL;4.7uF,20%,25V,GP,3.5,2.5MM,TP		UEYE	AH59-60001J	MODULE REMOCON;GP1U271R,38KHZ,-,MESH,-,	
C219	2401-001502	C-AL;47uF,20%,16V,GP,TP,6.3x5,2.5			AH66-10025A	PULLEY-MOTOR;-POM,-,CMS-100	
C212	2401-001502	C-AL;47uF,20%,16V,GP,TP,6.3x5,2.5		FD2	0401-000101	DIODE-SWITCHING;1N4148,100V,200mA,DO-35,	
C133	2401-001502	C-AL;47uF,20%,16V,GP,TP,6.3x5,2.5		FD1	0401-000101	DIODE-SWITCHING;1N4148,100V,200mA,DO-35,	
C302	2401-001893	C-AL;100uF,20%,6.3V,GP,TP,6.3x7.5		AD9	0401-000101	DIODE-SWITCHING;1N4148,100V,200mA,DO-35,	
C217	2401-001934	C-AL;220uF,20%,6.3V,GP,-,6.3x7,-		AD8	0401-000101	DIODE-SWITCHING;1N4148,100V,200mA,DO-35,	
C304	2401-001934	C-AL;220uF,20%,6.3V,GP,-,6.3x7,-		JD1	0401-000101	DIODE-SWITCHING;1N4148,100V,200mA,DO-35,	
C603	2401-001934	C-AL;220uF,20%,6.3V,GP,-,6.3x7,-		QD1	0401-000101	DIODE-SWITCHING;1N4148,100V,200mA,DO-35,	
C606	2401-001934	C-AL;220uF,20%,6.3V,GP,-,6.3x7,-		QD2	0401-000101	DIODE-SWITCHING;1N4148,100V,200mA,DO-35,	
R502L	2401-001934	C-AL;220uF,20%,6.3V,GP,-,6.3x7,-		RD16	0401-000101	DIODE-SWITCHING;1N4148,100V,200mA,DO-35,	
C215	2401-001934	C-AL;220uF,20%,6.3V,GP,-,6.3x7,-		UD12	0401-000101	DIODE-SWITCHING;1N4148,100V,200mA,DO-35,	
C101	2401-001934	C-AL;220uF,20%,6.3V,GP,-,6.3x7,-		AD1	0401-000101	DIODE-SWITCHING;1N4148,100V,200mA,DO-35,	
C107	2401-001934	C-AL;220uF,20%,6.3V,GP,-,6.3x7,-		AD10	0401-000101	DIODE-SWITCHING;1N4148,100V,200mA,DO-35,	
C108	2401-001934	C-AL;220uF,20%,6.3V,GP,-,6.3x7,-		AD11	0401-000101	DIODE-SWITCHING;1N4148,100V,200mA,DO-35,	
C131	2401-001934	C-AL;220uF,20%,6.3V,GP,-,6.3x7,-		AD12	0401-000101	DIODE-SWITCHING;1N4148,100V,200mA,DO-35,	
C210	2401-001934	C-AL;220uF,20%,6.3V,GP,-,6.3x7,-		AD13	0401-000101	DIODE-SWITCHING;1N4148,100V,200mA,DO-35,	
JW31-1	2701-000111	INDUCTOR-AXIAL,100uH,10%,2.5x3.4mm		AD5	0401-000101	DIODE-SWITCHING;1N4148,100V,200mA,DO-35,	
	AH59-01088B	SPEAKER SYSTEM,PSB7E,-,-,-,-,-,-,-,ELS,-		AD4	0401-000101	DIODE-SWITCHING;1N4148,100V,200mA,DO-35,	
				AD20	0401-000101	DIODE-SWITCHING;1N4148,100V,200mA,DO-35,	
	AH92-01568A	ASSY PCB-MAIN, ELS;MM-ZB7,MAIN, ELS		AD2	0401-000101	DIODE-SWITCHING;1N4148,100V,200mA,DO-35,	
RD4	0402-000157	DIODE-RECTIFIER;1N5402,200V,3A,DO-201AD,		UD9	0401-000133	DIODE-SWITCHING;RLS4148,100V,200MA,SOD-8	
RD3	0402-000157	DIODE-RECTIFIER;1N5402,200V,3A,DO-201AD,		UD2	0401-000133	DIODE-SWITCHING;RLS4148,100V,200MA,SOD-8	
RD2	0402-000157	DIODE-RECTIFIER;1N5402,200V,3A,DO-201AD,		UD17	0401-000133	DIODE-SWITCHING;RLS4148,100V,200MA,SOD-8	
RD1	0402-000157	DIODE-RECTIFIER;1N5402,200V,3A,DO-201AD,		VD5	0401-000133	DIODE-SWITCHING;RLS4148,100V,200MA,SOD-8	
RQ2	0502-000419	TR-POWER;-P,NP,25W,TO-220FBK,100-200		VD6	0401-000133	DIODE-SWITCHING;RLS4148,100V,200MA,SOD-8	
RQ1	0503-001013	TR-DARLINGTON;2SD2494,NPN,60W,TO-3PBK,6		VD7	0401-000133	DIODE-SWITCHING;RLS4148,100V,200MA,SOD-8	
ULD6	0601-001432	LED;ROUND,BLUE,3mm,455nm		VD8	0401-000133	DIODE-SWITCHING;RLS4148,100V,200MA,SOD-8	
ULD2	0601-001432	LED;ROUND,BLUE,3mm,455nm		AD25	0401-000133	DIODE-SWITCHING;RLS4148,100V,200MA,SOD-8	
ULD1	0601-001432	LED;ROUND,BLUE,3mm,455nm		AD7	0401-000133	DIODE-SWITCHING;RLS4148,100V,200MA,SOD-8	
	0603-001069	OPTIC TRANSMITTER;5V,8Mbps,-,-,17dBm,660n		UD1	0401-000133	DIODE-SWITCHING;RLS4148,100V,200MA,SOD-8	
AIC1	1201-001026	IC-POWER AMP;P,265,2IP,1P,19.6MIL,DUAL,1		UD11	0401-000133	DIODE-SWITCHING;RLS4148,100V,200MA,SOD-8	
RIC1	1203-000242	IC-POS.FIXED REG.;7812,TO-220,3P,-,PLAS		UD15	0401-000133	DIODE-SWITCHING;RLS4148,100V,200MA,SOD-8	
RIC2	1203-000276	IC-POS.FIXED REG.;7805,TO-220,3P,-,PLAS		UD14	0401-000133	DIODE-SWITCHING;RLS4148,100V,200MA,SOD-8	
RR1	2003-000556	R-METAL OXIDE(S);2.2ohm,5%,2W,AA,TP,4x12		UD13	0401-000133	DIODE-SWITCHING;RLS4148,100V,200MA,SOD-8	
RR2	2003-000701	R-METAL OXIDE(S);470ohm,5%,2W,AA,TP,4x12		RD14	0402-000127	DIODE-RECTIFIER;1N4002,100V,1A,DO-41,TP	
PC2	2201-000546	C-CERAMIC,DISC,4.7nF,20%,400V,Y5U,BK,16x		RD15	0402-000127	DIODE-RECTIFIER;1N4002,100V,1A,DO-41,TP	
PC1	2201-000546	C-CERAMIC,DISC,4.7nF,20%,400V,Y5U,BK,16x		RD17	0402-000127	DIODE-RECTIFIER;1N4002,100V,1A,DO-41,TP	
AC3	2401-001883	C-AL;1000uF,20%,25V,GPBK,16x25mm,5		RD18	0402-000127	DIODE-RECTIFIER;1N4002,100V,1A,DO-41,TP	
AC3L	2401-001883	C-AL;1000uF,20%,25V,GPBK,16x25mm,5		RD9	0402-000127	DIODE-RECTIFIER;1N4002,100V,1A,DO-41,TP	
AC3R	2401-001883	C-AL;1000uF,20%,25V,GPBK,16x25mm,5		RD10	0402-000127	DIODE-RECTIFIER;1N4002,100V,1A,DO-41,TP	
RC4	2401-001942	C-AL;3300uF,20%,35V,GPBK,18x35.5mm		AD1L	0402-000127	DIODE-RECTIFIER;1N4002,100V,1A,DO-41,TP	
RC2	2401-002258	C-AL;4700uF,20%,50V,GP,-,22x40mm,5m		AD1R	0402-000127	DIODE-RECTIFIER;1N4002,100V,1A,DO-41,TP	
UX2	2801-001394	CRYSTAL-UNIT;32.768KHz,20ppm,28-AA,Y,12.5		AD3	0402-000127	DIODE-RECTIFIER;1N4002,100V,1A,DO-41,TP	
UX1	2802-001157	RESONATOR-CERAMIC,6MHZ,-,BK,8X5.5X3MM		CD1	0402-000127	DIODE-RECTIFIER;1N4002,100V,1A,DO-41,TP	
	2901-001139	FILTER-EMI ON BOARD;50V,5A,-,390PF,7X,2		CD2	0402-000127	DIODE-RECTIFIER;1N4002,100V,1A,DO-41,TP	
USW31	3409-001119	SWITCH-DETECTOR;5V,DC,1.0A,DPST,30gf,-		RD6	0402-000151	DIODE-RECTIFIER;1N5392,100V,1.5A,DO-15,T	
PF3-1	3601-000170	FUSE-CARTRIDGE;250V,1.6A,TIME-LAG,GLASS,		RD7	0402-000151	DIODE-RECTIFIER;1N5392,100V,1.5A,DO-15,T	
PF4-1	3601-000282	FUSE;250V,4A,TIME-LAG,GLASS,5.2x20mm		RD8	0402-000151	DIODE-RECTIFIER;1N5392,100V,1.5A,DO-15,T	
PF2-1	3601-000318	FUSE-CARTRIDGE;250V,800mA,TIME-LAG,GLASS		RD5	0402-000151	DIODE-RECTIFIER;1N5392,100V,1.5A,DO-15,T	
FWA2	3708-001094	CONNECTOR-FPC/FFC/PIC;13P,1.25mm,STRAIGH		RD13	0402-000151	DIODE-RECTIFIER;1N5392,100V,1.5A,DO-15,T	
FWA4	3708-001195	CONNECTOR-FPC/FFC/PIC;27P,1.25mm,STRAIGH		RD12	0402-000151	DIODE-RECTIFIER;1N5392,100V,1.5A,DO-15,T	
UWA6	3708-001212	CONNECTOR-FPC/FFC/PIC;27P,1.25mm,STRAIGH		RD11	0402-000151	DIODE-RECTIFIER;1N5392,100V,1.5A,DO-15,T	
UWA9	3708-001723	CONNECTOR-FPC/FFC/PIC;17P,1.25MM,ANGLE,S		RZD3	0403-000354	DIODE-ZENER;UZ5.1B,5.1V,4.8-5.4V,500mW,D	
PWA1	3711-000190	CONNECTOR-HEADER;1WALL,2P,1R,7.92mm,STRA		FZD1	0403-000372	DIODE-ZENER;UZ9.1BM,9.1V,4.8-5.4V,500mW,D	
QWA1	3711-000820	CONNECTOR-HEADER,BOX,2P,1R,2.5mm,STRAIGH		RZD2	0403-000390	DIODE-ZENER;UZP33B,33V,31.4-34.6V,1W,DO-	
UWA4	3711-000826	CONNECTOR-HEADER,BOX,2P,1R,2mm,ANGLE,SN		RZD4	0403-000396	DIODE-ZENER;UZP6,6V,6.8V,6.4-7.2V,1W,DO-	
UWA10	3711-000826	CONNECTOR-HEADER,BOX,2P,1R,2mm,ANGLE,SN		RZD1	0403-001009	DIODE-ZENER;UZP27BHCC,27V,27-30V,1W,DO-D	
QWA2	3711-000907	CONNECTOR-HEADER,BOX,3P,1R,2mm,STRAIGHT,		JQ4	0501-000010	TR-SMALL SIGNAL;KSC1008,NPN,800mW,TO-92,	

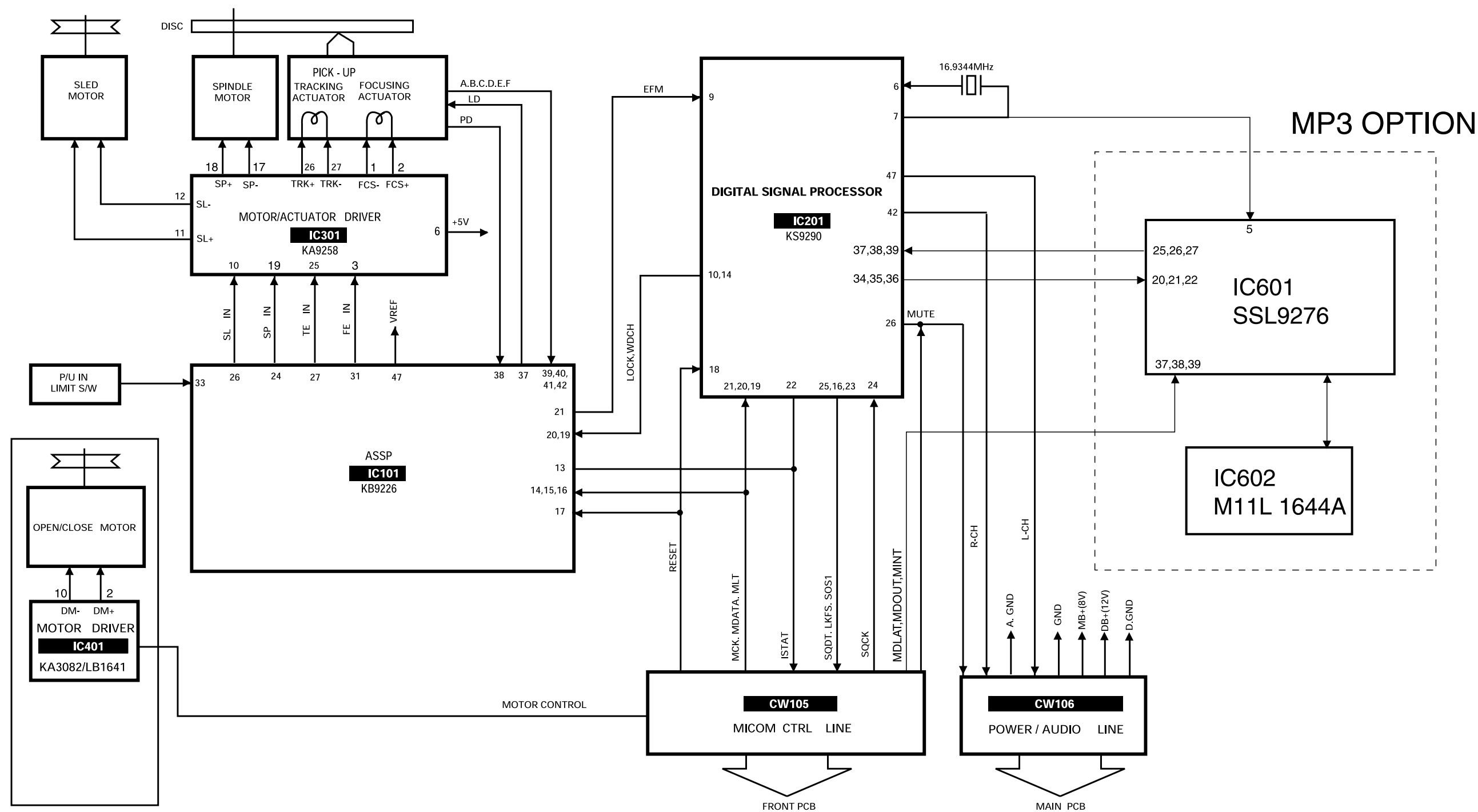
Location no.	Code no.	Description & Specification	Remarks	Location no.	Code no.	Description & Specification	Remarks
AQ6	0501-000010	TR-SMALL SIGNAL;KSC1008,NPN,800mW,TO-92,		RR3	2001-000522	R-CARBON;22Kohm,5%,1/8W,AA,TP1.8x3.2mm	
AQ5	0501-000010	TR-SMALL SIGNAL;KSC1008,NPN,800mW,TO-92,		AR11	2001-000522	R-CARBON;22Kohm,5%,1/8W,AA,TP1.8x3.2mm	
AQ3	0501-000010	TR-SMALL SIGNAL;KSC1008,NPN,800mW,TO-92,		AR12	2001-000522	R-CARBON;22Kohm,5%,1/8W,AA,TP1.8x3.2mm	
QQ1	0501-000294	TR-SMALL SIGNAL;KSA708-Y,PNP,800mW,TO-92,		AR15	2001-000522	R-CARBON;22Kohm,5%,1/8W,AA,TP1.8x3.2mm	
JQ3	0501-000398	TR-SMALL SIGNAL;KSC945,NPN,250mW,TO-92,T		AR4	2001-000522	R-CARBON;22Kohm,5%,1/8W,AA,TP1.8x3.2mm	
RQ5	0501-000398	TR-SMALL SIGNAL;KSC945,NPN,250mW,TO-92,T		AR7	2001-000522	R-CARBON;22Kohm,5%,1/8W,AA,TP1.8x3.2mm	
UQ1	0501-000398	TR-SMALL SIGNAL;KSC945,NPN,250mW,TO-92,T		AR5L	2001-000563	R-CARBON;27Kohm,5%,1/8W,AA,TP1.8x3.2mm	
UQ3	0501-000398	TR-SMALL SIGNAL;KSC945,NPN,250mW,TO-92,T		AR5R	2001-000563	R-CARBON;27Kohm,5%,1/8W,AA,TP1.8x3.2mm	
UQ5	0501-000398	TR-SMALL SIGNAL;KSC945,NPN,250mW,TO-92,T		JR3	2001-000591	R-CARBON;3.3Kohm,5%,1/8W,AA,TP1.8x3.2m	
JQ2R	0501-000398	TR-SMALL SIGNAL;KSC945,NPN,250mW,TO-92,T		UR99	2001-000734	R-CARBON;4.7Kohm,5%,1/8W,AA,TP1.8x3.2m	
CQ1	0501-000398	TR-SMALL SIGNAL;KSC945,NPN,250mW,TO-92,T		UR101	2001-000734	R-CARBON;4.7Kohm,5%,1/8W,AA,TP1.8x3.2m	
CQ2	0501-000398	TR-SMALL SIGNAL;KSC945,NPN,250mW,TO-92,T		FR5R	2001-000734	R-CARBON;4.7Kohm,5%,1/8W,AA,TP1.8x3.2m	
JQ1L	0501-000398	TR-SMALL SIGNAL;KSD471A-Y,NPN,800mW,TO-92,T		CR1	2001-000734	R-CARBON;4.7Kohm,5%,1/8W,AA,TP1.8x3.2m	
JQ1R	0501-000398	TR-SMALL SIGNAL;KSC945,NPN,250mW,TO-92,T		CR2	2001-000734	R-CARBON;4.7Kohm,5%,1/8W,AA,TP1.8x3.2m	
JQ2L	0501-000398	TR-SMALL SIGNAL;KSC945,NPN,250mW,TO-92,T		FR5L	2001-000734	R-CARBON;4.7Kohm,5%,1/8W,AA,TP1.8x3.2m	
QQ2	0501-000407	TR-SMALL SIGNAL;KSD471A-Y,NPN,800mW,TO-9		QR2	2001-000786	R-CARBON;47Kohm,5%,1/8W,AA,TP1.8x3.2mm	
FQ1R	0501-000407	TR-SMALL SIGNAL;KSD471A-Y,NPN,800mW,TO-9		QR1	2001-000786	R-CARBON;47Kohm,5%,1/8W,AA,TP1.8x3.2mm	
FQ1L	0501-000407	TR-SMALL SIGNAL;KSD471A-Y,NPN,800mW,TO-9		JR12	2001-000786	R-CARBON;47Kohm,5%,1/8W,AA,TP1.8x3.2mm	
AQ1R	0501-000407	TR-SMALL SIGNAL;KSD471A-Y,NPN,800mW,TO-9		JR11	2001-000786	R-CARBON;47Kohm,5%,1/8W,AA,TP1.8x3.2mm	
AQ1L	0501-000407	TR-SMALL SIGNAL;KSD471A-Y,NPN,800mW,TO-9		AR8	2001-000786	R-CARBON;47Kohm,5%,1/8W,AA,TP1.8x3.2mm	
RQ6	0501-000610	TR-SMALL SIGNAL;KSA928A-Y,PNP;1W,TO-92L,		AR5	2001-000786	R-CARBON;47Kohm,5%,1/8W,AA,TP1.8x3.2mm	
RQ3	0501-000610	TR-SMALL SIGNAL;KSA928A-Y,PNP;1W,TO-92L,		AR17	2001-000786	R-CARBON;47Kohm,5%,1/8W,AA,TP1.8x3.2mm	
JQ2	0501-000610	TR-SMALL SIGNAL;KSA928A-Y,PNP;1W,TO-92L,		UR65	2001-001006	R-CARBON;82ohm,5%,1/8W,AA,TP1.8x3.2mm	
CQ4	0501-000610	TR-SMALL SIGNAL;KSA928A-Y,PNP;1W,TO-92L,		UR151	2001-001006	R-CARBON;82ohm,5%,1/8W,AA,TP1.8x3.2mm	
CQ3	0501-000610	TR-SMALL SIGNAL;KSA928A-Y,PNP;1W,TO-92L,		FR2	2001-001077	R-CARBON(S);150ohm,5%,1/2W,AA,TP2.4x6.4	
AQ8	0504-000118	TR-DIGITAL;KSR1003,NPN,300MW,22K/22K,TO-		JR6	2001-001077	R-CARBON(S);150ohm,5%,1/2W,AA,TP2.4x6.4	
JQ10	0504-000118	TR-DIGITAL;KSR1003,NPN,300MW,22K/22K,TO-		RR6	2001-001093	R-CARBON(S);2.2Kohm,5%,1/2W,AA,TP2.4x6.	
RQ4	0504-000118	TR-DIGITAL;KSR1003,NPN,300MW,22K/22K,TO-		RR11	2001-001093	R-CARBON(S);2.2Kohm,5%,1/2W,AA,TP2.4x6.	
AQ1	0504-000118	TR-DIGITAL;KSR1003,NPN,300MW,22K/22K,TO-		JR8	2001-001096	R-CARBON(S);2.2ohm,5%,1/2W,AA,TP2.4x6.4	
AQ4	0504-000118	TR-DIGITAL;KSR1003,NPN,300MW,22K/22K,TO-		RR5	2001-001138	R-CARBON(S);390ohm,5%,1/2W,AA,TP2.4x6.4	
AQ7	0504-000118	TR-DIGITAL;KSR1003,NPN,300MW,22K/22K,TO-		AR7R	2001-001146	R-CARBON(S);4.7ohm,5%,1/2W,AA,TP2.4x6.4	
UQ6	0504-001003	TR-DIGITAL;KSR2003,PNP,300MW,22K/22K,TO-		AR7L	2001-001146	R-CARBON(S);4.7ohm,5%,1/2W,AA,TP2.4x6.4	
JQ1	0504-001003	TR-DIGITAL;KSR2003,PNP,300MW,22K/22K,TO-		AR9L	2001-001163	R-CARBON(S);560ohm,5%,1/2W,AA,TP2.4x6.4	
FQ1	0504-001003	TR-DIGITAL;KSR2003,PNP,300MW,22K/22K,TO-		AR9R	2001-001163	R-CARBON(S);560ohm,5%,1/2W,AA,TP2.4x6.4	
AQ2	0504-001003	TR-DIGITAL;KSR2003,PNP,300MW,22K/22K,TO-		RR4	2001-001178	R-CARBON(S);680ohm,5%,1/2W,AA,TP2.4x6.4	
ULD3	0601-001238	LED;ROUND,RED,3.1mm,697nm		CR4	2001-001178	R-CARBON(S);680ohm,5%,1/2W,AA,TP2.4x6.4	
JIC1	1201-001819	IC-PREAMP;-,-44P;-,-PLASTIC,18V,625M		CR3	2001-001178	R-CARBON(S);680ohm,5%,1/2W,AA,TP2.4x6.4	
FIC1	1204-001776	IC-SOUND PROCESSOR,TD47442D,SOP28P,295M		JW97	2007-000029	R-CHIP;00HM,5%,1/10W,DA,TP2012	
JR8L	2001-000008	R-CARBON;15Kohm,5%,1/8W,AA,TP1.8x3.2mm		JW96	2007-000029	R-CHIP;00HM,5%,1/10W,DA,TP2012	
JR8R	2001-000008	R-CARBON;15Kohm,5%,1/8W,AA,TP1.8x3.2mm		JW92	2007-000029	R-CHIP;00HM,5%,1/10W,DA,TP2012	
RR9	2001-000028	R-CARBON(S);100OHM,5%,1/2W,AA,TP2.4x6.4		JW79	2007-000029	R-CHIP;00HM,5%,1/10W,DA,TP2012	
RR10	2001-000028	R-CARBON(S);100OHM,5%,1/2W,AA,TP2.4x6.4		JR11L	2007-000029	R-CHIP;00HM,5%,1/10W,DA,TP2012	
RR8	2001-000052	R-CARBON(S);3.3Kohm,5%,1/2W,AA,TP2.4x6.		JR11R	2007-000029	R-CHIP;00HM,5%,1/10W,DA,TP2012	
RR7	2001-000052	R-CARBON(S);3.3Kohm,5%,1/2W,AA,TP2.4x6.		JW150	2007-000029	R-CHIP;00HM,5%,1/10W,DA,TP2012	
AR13	2001-000052	R-CARBON(S);3.3Kohm,5%,1/2W,AA,TP2.4x6.		AR3	2007-000032	R-CHIP;390KOHM,5%,1/10W,DA,TP2012	
AR8R	2001-000109	R-CARBON(S);470ohm,5%,1/2W,AA,TP2.4x6.4		JW67	2007-000033	R-CHIP;00HM,5%,1/8W,DA,TP3216	
AR8L	2001-000109	R-CARBON(S);470ohm,5%,1/2W,AA,TP2.4x6.4		JW78	2007-000033	R-CHIP;00HM,5%,1/8W,DA,TP3216	
AR9	2001-000273	R-CARBON;100Kohm,5%,1/8W,AA,TP1.8x3.2m		JW93	2007-000033	R-CHIP;00HM,5%,1/8W,DA,TP3216	
UR41	2001-000281	R-CARBON;100ohm,5%,1/8W,AA,TP1.8x3.2mm		JW94	2007-000033	R-CHIP;00HM,5%,1/8W,DA,TP3216	
UR38	2001-000281	R-CARBON;100ohm,5%,1/8W,AA,TP1.8x3.2mm		JW95	2007-000033	R-CHIP;00HM,5%,1/8W,DA,TP3216	
JR13	2001-000281	R-CARBON;100ohm,5%,1/8W,AA,TP1.8x3.2mm		JW23	2007-000033	R-CHIP;00HM,5%,1/8W,DA,TP3216	
FR4	2001-000281	R-CARBON;100ohm,5%,1/8W,AA,TP1.8x3.2mm		JW100	2007-000033	R-CHIP;00HM,5%,1/8W,DA,TP3216	
UR42	2001-000281	R-CARBON;100ohm,5%,1/8W,AA,TP1.8x3.2mm		JW101	2007-000033	R-CHIP;00HM,5%,1/8W,DA,TP3216	
UR43	2001-000281	R-CARBON;100ohm,5%,1/8W,AA,TP1.8x3.2mm		JW14	2007-000033	R-CHIP;00HM,5%,1/8W,DA,TP3216	
UR44	2001-000281	R-CARBON;100ohm,5%,1/8W,AA,TP1.8x3.2mm		JW17	2007-000033	R-CHIP;00HM,5%,1/8W,DA,TP3216	
UR45	2001-000281	R-CARBON;100ohm,5%,1/8W,AA,TP1.8x3.2mm		JW22	2007-000033	R-CHIP;00HM,5%,1/8W,DA,TP3216	
CR10	2001-000281	R-CARBON;100ohm,5%,1/8W,AA,TP1.8x3.2mm		UR60	2007-000241	R-CHIP;1.5KOHM,5%,1/10W,DA,TP2012	
FR20	2001-000281	R-CARBON;100ohm,5%,1/8W,AA,TP1.8x3.2mm		UR53	2007-000241	R-CHIP;1.5KOHM,5%,1/10W,DA,TP2012	
FR21	2001-000281	R-CARBON;100ohm,5%,1/8W,AA,TP1.8x3.2mm		UR61	2007-000267	R-CHIP;1.8KOHM,5%,1/10W,DA,TP2012	
FR22	2001-000281	R-CARBON;100ohm,5%,1/8W,AA,TP1.8x3.2mm		UR54	2007-000267	R-CHIP;1.8KOHM,5%,1/10W,DA,TP2012	
FR3	2001-000281	R-CARBON;100ohm,5%,1/8W,AA,TP1.8x3.2mm		UR73	2007-000282	R-CHIP;100KOHM,5%,1/10W,DA,TP2012	
FR25	2001-000281	R-CARBON;100ohm,5%,1/8W,AA,TP1.8x3.2mm		UR74	2007-000282	R-CHIP;100KOHM,5%,1/10W,DA,TP2012	
FR24	2001-000281	R-CARBON;100ohm,5%,1/8W,AA,TP1.8x3.2mm		UR75	2007-000282	R-CHIP;100KOHM,5%,1/10W,DA,TP2012	
FR23	2001-000281	R-CARBON;100ohm,5%,1/8W,AA,TP1.8x3.2mm		UR76	2007-000282	R-CHIP;100KOHM,5%,1/10W,DA,TP2012	
JR15	2001-000290	R-CARBON;10Kohm,5%,1/8W,AA,TP1.8x3.2mm		UR77	2007-000282	R-CHIP;100KOHM,5%,1/10W,DA,TP2012	
FR10R	2001-000290	R-CARBON;10Kohm,5%,1/8W,AA,TP1.8x3.2mm		UR78	2007-000282	R-CHIP;100KOHM,5%,1/10W,DA,TP2012	
FR10L	2001-000290	R-CARBON;10Kohm,5%,1/8W,AA,TP1.8x3.2mm		UR79	2007-000282	R-CHIP;100KOHM,5%,1/10W,DA,TP2012	
AR19	2001-000331	R-CARBON;12Kohm,5%,1/8W,AA,TP1.8x3.2mm		AR10	2007-000282	R-CHIP;100KOHM,5%,1/10W,DA,TP2012	
FR9L	2001-000331	R-CARBON;12Kohm,5%,1/8W,AA,TP1.8x3.2mm		JR7L	2007-000282	R-CHIP;100KOHM,5%,1/10W,DA,TP2012	
UR30	2001-000362	R-CARBON;150ohm,5%,1/8W,AA,TP1.8x3.2mm		JR7R	2007-000282	R-CHIP;100KOHM,5%,1/10W,DA,TP2012	
UR27	2001-000362	R-CARBON;150ohm,5%,1/8W,AA,TP1.8x3.2mm		UR39	2007-000282	R-CHIP;100KOHM,5%,1/10W,DA,TP2012	
UR16	2001-000362	R-CARBON;150ohm,5%,1/8W,AA,TP1.8x3.2mm		UR72	2007-000282	R-CHIP;100KOHM,5%,1/10W,DA,TP2012	
UR52	2001-000429	R-CARBON;1Kohm,5%,1/8W,AA,TP1.8x3.2mm		UR71	2007-000282	R-CHIP;100KOHM,5%,1/10W,DA,TP2012	
MR59	2001-000429	R-CARBON;1Kohm,5%,1/8W,AA,TP1.8x3.2mm		UR40	2007-000282	R-CHIP;100KOHM,5%,1/10W,DA,TP2012	
JR1R	2001-000429	R-CARBON;1Kohm,5%,1/8W,AA,TP1.8x3.2mm		UR51	2007-000290	R-CHIP;100KOHM,5%,1/10W,DA,TP2012	
JR1L	2001-000429	R-CARBON;1Kohm,5%,1/8W,AA,TP1.8x3.2mm		UR50	2007-000290	R-CHIP;100KOHM,5%,1/10W,DA,TP2012	
AR6	2001-000429	R-CARBON;1Kohm,5%,1/8W,AA,TP1.8x3.2mm		UR48	2007-000290	R-CHIP;100KOHM,5%,1/10W,DA,TP2012	
JR10	2001-000435	R-CARBON;1Mohm,5%,1/8W,AA,TP1.8x3.2mm		UR12	2007-000290	R-CHIP;100KOHM,5%,1/10W,DA,TP2012	
UR100	2001-000449	R-CARBON;2.2Kohm,5%,1/8W,AA,TP1.8x3.2m		UR36	2007-000300	R-CHIP;10KOHM,5%,1/10W,DA,TP2012	
QR4	2001-000449	R-CARBON;2.2Kohm,5%,1/8W,AA,TP1.8x3.2m		UR49	2007-000300	R-CHIP;10KOHM,5%,1/10W,DA,TP2012	
JR13R	2001-000449	R-CARBON;2.2Kohm,5%,1/8W,AA,TP1.8x3.2m		UR80	2007-000300	R-CHIP;10KOHM,5%,1/10W,DA,TP2012	
JR13L	2001-000449	R-CARBON;2.2Kohm,5%,1/8W,AA,TP1.8x3.2m		UR34	2007-000300	R-CHIP;10KOHM,5%,1/10W,DA,TP2012	
AR2	2001-000449	R-CARBON;2.2Kohm,5%,1/8W,AA,TP1.8x3.2m		UR17	2007-000300	R-CHIP;10KOHM,5%,1/10W,DA,TP2012	
AR2R	2001-000449	R-CARBON;2.2Kohm,5%,1/8W,AA,TP1.8x3.2m		UR15	2007-000300	R-CHIP;10KOHM,5%,1/10W,DA,TP2012	
AR3L	2001-000449	R-CARBON;2.2Kohm,5%,1/8W,AA,TP1.8x3.2m		UR14	2007-000300	R-CHIP;10KOHM,5%,1/10W,DA,TP2012	
FR11R	2001-000515	R-CARBON;220ohm,5%,1/8W,AA,TP1.8x3.2mm		UR99	2007-000300	R-CHIP;10KOHM,5%,1/10W,DA,TP2012	
FR11L	2001-000515	R-CARBON;220ohm,5%,1/8W,AA,TP1.8x3.2mm		UR86	2007-000300	R-CHIP;10KOHM,5%,1/10W,DA,TP2012	
AR6R	2001-000515	R-CARBON;220ohm,5%,1/8W,AA,TP1.8x3.2mm		UR85	2007-000300	R-CHIP;10KOHM,5%,1/10W,DA,TP2012	
AR6L	2001-000515	R-CARBON;220ohm,5%,1/8W,AA,TP1.8x3.2mm		UR84	2007-000300	R-CHIP;10KOHM,5%,1/10W,DA,TP2012	
JR1	2001-000522	R-CARBON;22Kohm,5%,1/8W,AA,TP1.8x3.2mm		UR83	2007-000300	R-CHIP;10KOHM,5%,1/10W,DA,TP2012	
JR14	2001-000522	R-CARBON;22Kohm,5%,1/8W,AA,TP1.8x3.2mm		UR82	2007-000300	R-CHIP;10KOHM,5%,1/10W,DA,TP2012	
JR2	2001-000522	R-CARBON;22Kohm,5%,1/8W,AA,TP1.8x3.2mm		UR81	2007-000300	R-CHIP;10KOHM,5%,1/10W,DA,TP2012	
QR3	2001-000522	R-CARBON;22Kohm,5%,1/8W,AA,TP1.8x3.2mm		CR7	2007-000300	R-CHIP;10KOHM,5%,1/10W,DA,TP2012	

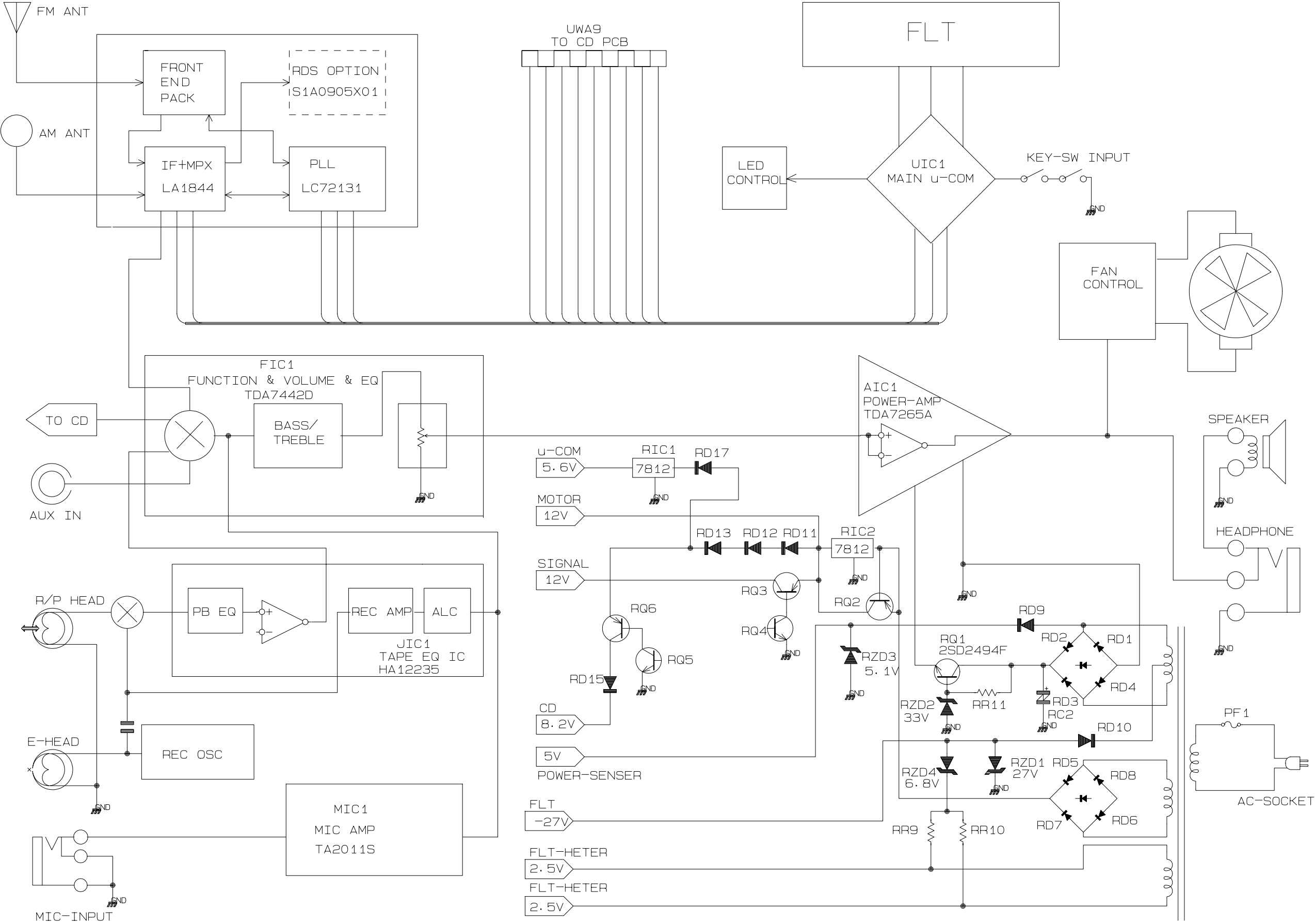
Location no.	Code no.	Description & Specification	Remarks	Location no.	Code no.	Description & Specification	Remarks
CR6	2007-000300	R-CHIP;10KOHM,5%,1/10W,DA,TP2012		RC3	2201-000161	C-CERAMIC,DISC;10nF,+80-20%,500V,Y5V,TP	
CR5	2007-000300	R-CHIP;10KOHM,5%,1/10W,DA,TP2012		RC1	2201-000161	C-CERAMIC,DISC;10nF,+80-20%,500V,Y5V,TP	
CR12	2007-000300	R-CHIP;10KOHM,5%,1/10W,DA,TP2012		AC7L	2201-000546	C-CERAMIC,DISC;4.7nF,20%,400V,Y5U,BK,16x	
CR11	2007-000300	R-CHIP;10KOHM,5%,1/10W,DA,TP2012		AC7R	2201-000546	C-CERAMIC,DISC;4.7nF,20%,400V,Y5U,BK,16x	
AR1R	2007-000300	R-CHIP;10KOHM,5%,1/10W,DA,TP2012		AC8R	2201-000565	C-CERAMIC,DISC;47nF,+80% -20%, 50V,Y5V,12	
AR1L	2007-000300	R-CHIP;10KOHM,5%,1/10W,DA,TP2012		AC8L	2201-000565	C-CERAMIC,DISC;47nF,+80% -20%, 50V,Y5V,12	
JR7	2007-000300	R-CHIP;10KOHM,5%,1/10W,DA,TP2012		RC100	2201-000783	C-CERAMIC,DISC;100nF,+80-20%,50V,Y5V,TP	
JR20	2007-000300	R-CHIP;10KOHM,5%,1/10W,DA,TP2012		FC8L	2202-000780	C-CERAMIC,MLC-AXIAL;100nF,+80-20%,50V,Y5	
JR16	2007-000300	R-CHIP;10KOHM,5%,1/10W,DA,TP2012		AC4L	2202-000850	C-CERAMIC,MLC-AXIAL;2.2nF,20%,16V,Y5R	
JR12R	2007-000300	R-CHIP;10KOHM,5%,1/10W,DA,TP2012		UC15	2202-000854	C-CERAMIC,MLC-AXIAL;47nF,30%,50V,Y5R,TP	
JR12L	2007-000300	R-CHIP;10KOHM,5%,1/10W,DA,TP2012		JC4R	2203-000203	C-CERAMIC,CHIP;100nF,10%,16V,X7R,TP2012	
CR9	2007-000300	R-CHIP;10KOHM,5%,1/10W,DA,TP2012		JC4L	2203-000203	C-CERAMIC,CHIP;100nF,10%,16V,X7R,TP2012	
CR8	2007-000300	R-CHIP;10KOHM,5%,1/10W,DA,TP2012		FC9R	2203-000203	C-CERAMIC,CHIP;100nF,10%,16V,X7R,TP2012	
FR9R	2007-000355	R-CHIP;12KOHM,5%,1/10W,DA,TP2012		FC9L	2203-000203	C-CERAMIC,CHIP;100nF,10%,16V,X7R,TP2012	
FR4L	2007-000409	R-CHIP;15KOHM,5%,1/10W,DA,TP2012		FC8R	2203-000203	C-CERAMIC,CHIP;100nF,10%,16V,X7R,TP2012	
FR4R	2007-000409	R-CHIP;15KOHM,5%,1/10W,DA,TP2012		FC24	2203-000239	C-CERAMIC,CHIP;0.1nF,5%,50V,NP0,TP2012	
FR2R	2007-000457	R-CHIP;18KOHM,5%,1/10W,DA,TP2012		FC25	2203-000239	C-CERAMIC,CHIP;0.1nF,5%,50V,NP0,TP2012	
FR2L	2007-000457	R-CHIP;18KOHM,5%,1/10W,DA,TP2012		FC26	2203-000239	C-CERAMIC,CHIP;0.1nF,5%,50V,NP0,TP2012	
UR68	2007-000468	R-CHIP;1KOHM,5%,1/10W,DA,TP2012		FC21	2203-000239	C-CERAMIC,CHIP;0.1nF,5%,50V,NP0,TP2012	
UR6	2007-000468	R-CHIP;1KOHM,5%,1/10W,DA,TP2012		FC22	2203-000239	C-CERAMIC,CHIP;0.1nF,5%,50V,NP0,TP2012	
UR24	2007-000468	R-CHIP;1KOHM,5%,1/10W,DA,TP2012		FC23	2203-000239	C-CERAMIC,CHIP;0.1nF,5%,50V,NP0,TP2012	
UR23	2007-000468	R-CHIP;1KOHM,5%,1/10W,DA,TP2012		UC53	2203-000260	C-CERAMIC,CHIP;10nF,10%,50V,X7R,TP2012	
UR69	2007-000468	R-CHIP;1KOHM,5%,1/10W,DA,TP2012		UC53	2203-000260	C-CERAMIC,CHIP;10nF,10%,50V,X7R,TP2012	
UR7	2007-000468	R-CHIP;1KOHM,5%,1/10W,DA,TP2012		JC7R	2203-000260	C-CERAMIC,CHIP;10nF,10%,50V,X7R,TP2012	
UR70	2007-000468	R-CHIP;1KOHM,5%,1/10W,DA,TP2012		JC7L	2203-000260	C-CERAMIC,CHIP;10nF,10%,50V,X7R,TP2012	
UR8	2007-000468	R-CHIP;1KOHM,5%,1/10W,DA,TP2012		JC6R	2203-000260	C-CERAMIC,CHIP;10nF,10%,50V,X7R,TP2012	
UR9	2007-000468	R-CHIP;1KOHM,5%,1/10W,DA,TP2012		JC6L	2203-000260	C-CERAMIC,CHIP;10nF,10%,50V,X7R,TP2012	
UR22	2007-000468	R-CHIP;1KOHM,5%,1/10W,DA,TP2012		JC10R	2203-000495	C-CERAMIC,CHIP;2.2nF,10%,50V,X7R,TP2012	
JR21	2007-000468	R-CHIP;1KOHM,5%,1/10W,DA,TP2012		JC10L	2203-000495	C-CERAMIC,CHIP;2.2nF,10%,50V,X7R,TP2012	
JR9	2007-000468	R-CHIP;1KOHM,5%,1/10W,DA,TP2012		AC4R	2203-000495	C-CERAMIC,CHIP;2.2nF,10%,50V,X7R,TP2012	
UR1	2007-000468	R-CHIP;1KOHM,5%,1/10W,DA,TP2012		FC2	2203-000595	C-CERAMIC,CHIP;0.22nF,5%,50V,NP0,TP2012	
UR10	2007-000468	R-CHIP;1KOHM,5%,1/10W,DA,TP2012		FC3	2203-000595	C-CERAMIC,CHIP;0.22nF,5%,50V,NP0,TP2012	
UR11	2007-000468	R-CHIP;1KOHM,5%,1/10W,DA,TP2012		JC10	2203-000595	C-CERAMIC,CHIP;0.22nF,5%,50V,NP0,TP2012	
UR13	2007-000468	R-CHIP;1KOHM,5%,1/10W,DA,TP2012		JC11	2203-000595	C-CERAMIC,CHIP;0.22nF,5%,50V,NP0,TP2012	
UR2	2007-000468	R-CHIP;1KOHM,5%,1/10W,DA,TP2012		AC5L	2203-000595	C-CERAMIC,CHIP;0.22nF,5%,50V,NP0,TP2012	
UR20	2007-000468	R-CHIP;1KOHM,5%,1/10W,DA,TP2012		AC5R	2203-000595	C-CERAMIC,CHIP;0.22nF,5%,50V,NP0,TP2012	
UR21	2007-000468	R-CHIP;1KOHM,5%,1/10W,DA,TP2012		FC1L	2203-000595	C-CERAMIC,CHIP;0.22nF,5%,50V,NP0,TP2012	
UR4	2007-000477	R-CHIP;1MOHM,5%,1/10W,DA,TP2012		FC1R	2203-000595	C-CERAMIC,CHIP;0.22nF,5%,50V,NP0,TP2012	
UR62	2007-000493	R-CHIP;2.2KOHM,5%,1/10W,DA,TP2012		UC52	2203-000609	C-CERAMIC,CHIP;22nF,10%,50V,X7R,TP2012	
UR55	2007-000493	R-CHIP;2.2KOHM,5%,1/10W,DA,TP2012		UC15	2203-000609	C-CERAMIC,CHIP;22nF,10%,50V,X7R,TP2012	
UR18	2007-000493	R-CHIP;2.2KOHM,5%,1/10W,DA,TP2012		OC3	2203-000609	C-CERAMIC,CHIP;22nF,10%,50V,X7R,TP2012	
JR5	2007-000493	R-CHIP;2.2KOHM,5%,1/10W,DA,TP2012		OC2	2203-000618	C-CERAMIC,CHIP;0.033nF,5%,50V,NP0,TP201	
FR6R	2007-000493	R-CHIP;2.2KOHM,5%,1/10W,DA,TP2012		UC3	2203-000679	C-CERAMIC,CHIP;47nF,10%,50V,X7R,TP2012	
AR2L	2007-000493	R-CHIP;2.2KOHM,5%,1/10W,DA,TP2012		UC12	2203-000679	C-CERAMIC,CHIP;47nF,10%,50V,X7R,TP2012	
AR3R	2007-000493	R-CHIP;2.2KOHM,5%,1/10W,DA,TP2012		UC10	2203-000679	C-CERAMIC,CHIP;47nF,10%,50V,X7R,TP2012	
FR1	2007-000493	R-CHIP;2.2KOHM,5%,1/10W,DA,TP2012		FC10L	2203-001036	C-CERAMIC,CHIP;5.6nF,10%,50V,X7R,TP2012	
FR6L	2007-000493	R-CHIP;2.2KOHM,5%,1/10W,DA,TP2012		FC10R	2203-001036	C-CERAMIC,CHIP;5.6nF,10%,50V,X7R,TP2012	
UR88	2007-000565	R-CHIP;220KOHM,5%,1/10W,DA,TP2012		JC1R	2203-001132	C-CERAMIC,CHIP;0.68nF,5%,50V,NP0,TP2012	
FR12R	2007-000565	R-CHIP;220KOHM,5%,1/10W,DA,TP2012		JC1L	2203-001132	C-CERAMIC,CHIP;0.68nF,5%,50V,NP0,TP2012	
FR12L	2007-000565	R-CHIP;220KOHM,5%,1/10W,DA,TP2012		AC2L	2203-001537	C-CERAMIC,CHIP;1nF,10%,50V,X7R,TP2012	
UR25	2007-000586	R-CHIP;22KOHM,5%,1/10W,DA,TP2012		AC2R	2203-001537	C-CERAMIC,CHIP;1nF,10%,50V,X7R,TP2012	
JR2R	2007-000586	R-CHIP;22KOHM,5%,1/10W,DA,TP2012		UC2	2203-001611	C-CERAMIC,CHIP;0.022nF,5%,50V,NP0,TP201	
JR2L	2007-000586	R-CHIP;22KOHM,5%,1/10W,DA,TP2012		UC1	2203-001611	C-CERAMIC,CHIP;0.022nF,5%,50V,NP0,TP201	
FR3R	2007-000586	R-CHIP;22KOHM,5%,1/10W,DA,TP2012		AC12R	2301-000128	C-FILM,PEF;100nF,5%,50V,TP10X9X4.3X5.5mm	
FR3L	2007-000586	R-CHIP;22KOHM,5%,1/10W,DA,TP2012		AC12L	2301-000128	C-FILM,PEF;100nF,5%,50V,TP10X9X4.3X5.5mm	
AR1	2007-000586	R-CHIP;22KOHM,5%,1/10W,DA,TP2012		JC3L	2301-000379	C-FILM,PEF;10nF,10%,50V,TP6x12x3.5mm,-	
UR56	2007-000686	R-CHIP;3.3KOHM,5%,1/10W,DA,TP2012		JC3R	2301-000379	C-FILM,PEF;10nF,10%,50V,TP6x12x3.5mm,-	
MR63	2007-000686	R-CHIP;3.3KOHM,5%,1/10W,DA,TP2012		JC7	2301-000390	C-FILM,PEF;15nF,10%,50V,TP7x12x3.5mm,-	
MR64	2007-000872	R-CHIP;4.7KOHM,5%,1/10W,DA,TP2012		JC6	2301-000404	C-FILM,PEF;2.2nF,10%,50V,TP5.5x12x3mm,-	
MR66	2007-000872	R-CHIP;4.7KOHM,5%,1/10W,DA,TP2012		JC9	2301-000407	C-FILM,PEF;2.2nF,10%,50V,TP5.5x12x3mm,-	
RR30	2007-000872	R-CHIP;4.7KOHM,5%,1/10W,DA,TP2012		JC5	2401-000240	C-LAL;100uF,20%,10V,GPTP5x11.5	
UR19	2007-000872	R-CHIP;4.7KOHM,5%,1/10W,DA,TP2012		OC1	2401-000240	C-LAL;100uF,20%,10V,GPTP5x11.5	
UR32	2007-000872	R-CHIP;4.7KOHM,5%,1/10W,DA,TP2012		UC4	2401-000240	C-LAL;100uF,20%,10V,GPTP5x11.5	
UR57	2007-000872	R-CHIP;4.7KOHM,5%,1/10W,DA,TP2012		RC10	2401-000244	C-LAL;100uF,20%,10V,GPTP6.3x7.5	
AR14	2007-000872	R-CHIP;4.7KOHM,5%,1/10W,DA,TP2012		RC11	2401-000325	C-LAL;100uF,20%,35V,GP,-8x11.5,3.5mm	
JR3L	2007-000872	R-CHIP;4.7KOHM,5%,1/10W,DA,TP2012		RC8	2401-000357	C-LAL;100uF,0.2,50V,GP8*12.5MM,SSL	
JR3R	2007-000872	R-CHIP;4.7KOHM,5%,1/10W,DA,TP2012		FC1	2401-000419	C-LAL;10UF,20%,16V,GP,-5X11.5	
JR4	2007-000872	R-CHIP;4.7KOHM,5%,1/10W,DA,TP2012		AC6	2401-000419	C-LAL;10UF,20%,16V,GP,-5X11.5	
JR4L	2007-000872	R-CHIP;4.7KOHM,5%,1/10W,DA,TP2012		AC5	2401-000419	C-LAL;10UF,20%,16V,GP,-5X11.5	
JR4R	2007-000872	R-CHIP;4.7KOHM,5%,1/10W,DA,TP2012		AC1	2401-000419	C-LAL;10UF,20%,16V,GP,-5X11.5	
JR18	2007-000941	R-CHIP;47KOHM,5%,1/10W,DA,TP2012		RC7	2401-000475	C-LAL;10uF,20%,50V,GPTP5x11mm,5mm	
JR17	2007-000941	R-CHIP;47KOHM,5%,1/10W,DA,TP2012		UC54	2401-000759	C-LAL;220nF,20%,50V,GPTP5x11mm,5mm	
AR18	2007-000941	R-CHIP;47KOHM,5%,1/10W,DA,TP2012		RC5	2401-000795	C-LAL;220uF,20%,16V,GPTP8x12mm,5mm	
FR8R	2007-000981	R-CHIP;5.6KOHM,5%,1/10W,DA,TP2012		AC2	2401-000970	C-LAL;22uF,20%,50V,WT,TP5x11.5	
FR8L	2007-000981	R-CHIP;5.6KOHM,5%,1/10W,DA,TP2012		UC5	2401-001355	C-LAL;470uF,20%,10V,GP,TP8x11.5mm,5	
UR5	2007-001024	R-CHIP;560KOHM,5%,1/10W,DA,TP2012		RC25	2401-001364	C-LAL;470uF,20%,16V,GP,TP10x12.5,5	
AR4R	2007-001039	R-CHIP;56KOHM,5%,1/10W,DA,TP2012		QC1	2401-001474	C-LAL;47uF,20%,10V,GP,TP6.3x7.5	
AR4L	2007-001039	R-CHIP;56KOHM,5%,1/10W,DA,TP2012		UC9	2401-001511	C-LAL;47uF,20%,16V,GP6*7.5MM,TP	
JR6L	2007-001071	R-CHIP;6.8KOHM,5%,1/10W,DA,TP2012		JC2R	2401-001511	C-LAL;47uF,20%,16V,GP6*7.5MM,TP	
JR6R	2007-001071	R-CHIP;6.8KOHM,5%,1/10W,DA,TP2012		JC2L	2401-001511	C-LAL;47uF,20%,16V,GP6*7.5MM,TP	
JR9L	2007-001071	R-CHIP;6.8KOHM,5%,1/10W,DA,TP2012		RC9	2401-001572	C-LAL;47uF,20%,50V,GPTP6.3x11mm,5m	
JR9R	2007-001071	R-CHIP;6.8KOHM,5%,1/10W,DA,TP2012		AC50	2401-001572	C-LAL;47uF,20%,50V,GPTP6.3x11mm,5m	
JR10L	2007-001071	R-CHIP;6.8KOHM,5%,1/10W,DA,TP2012		CC1	2401-001893	C-LAL;100uF,20%,16V,GP,TP6.3x7.5	
JR10R	2007-001071	R-CHIP;6.8KOHM,5%,1/10W,DA,TP2012		QC2	2401-001893	C-LAL;100uF,20%,16V,GP,TP6.3x7.5	
JR5L	2007-001071	R-CHIP;6.8KOHM,5%,1/10W,DA,TP2012		JC8	2401-001895	C-LAL;100uF,20%,16V,GP6.3*11.5MM,TP	
JR5R	2007-001071	R-CHIP;6.8KOHM,5%,1/10W,DA,TP2012		JC3	2401-001895	C-LAL;100uF,20%,16V,GP6.3*11.5MM,TP	
UR58	2007-001177	R-CHIP;8.2KOHM,5%,1/10W,DA,TP2012		FC5	2401-001895	C-LAL;100uF,20%,16V,GP6.3*11.5MM,TP	
FR1R	2007-001177	R-CHIP;8.2KOHM,5%,1/10W,DA,TP2012		RC6	2401-001912	C-LAL;1uF,20%,50V,GP5*11.5mm,TP	
FR1L	2007-001177	R-CHIP;8.2KOHM,5%,1/10W,DA,TP2012		JC8R	2401-001912	C-LAL;1uF,20%,50V,GP5*11.5mm,TP	
UR3	2007-001654	R-CHIP;10MOHM,1%,1/10W,DA,TP201		JC8L	2401-001912	C-LAL;1uF,20%,50V,GP5*11.5mm,TP	
RR12	2008-000135	R-FUSIBLE;1ohm,5%,1/2W,AA,TP3.3x9mm		JC30	2401-001912	C-LAL;1uF,20%,50V,GP5*11.5mm,TP	
RR13	2008-000135	R-FUSIBLE;1ohm,5%,1/2W,AA,TP3.3x9mm		AC1L	2401-001912	C-LAL;1uF,20%,50V,GP5*11.5mm,TP	
CVR1	2103-000341	VR-SEMI;2Kohm,30%,1/10W,TOP		AC1R	2401-001912	C-LAL;1uF,20%,50V,GP5*11.5mm,TP	

Location no.	Code no.	Description & Specification	Remarks	Location no.	Code no.	Description & Specification	Remarks
JC1	2401-001912	C-AL:1uF,20%,50V,GP,5*11,5mm,TP					
FC6L	2401-001919	C-AL:2.2uF,20%,50V,GP,4*7,5MM,TP					
FC5R	2401-001919	C-AL:2.2uF,20%,50V,GP,4*7,5MM,TP					
FC5L	2401-001919	C-AL:2.2uF,20%,50V,GP,4*7,5MM,TP					
FC4R	2401-001919	C-AL:2.2uF,20%,50V,GP,4*7,5MM,TP					
FC6R	2401-001919	C-AL:2.2uF,20%,50V,GP,4*7,5MM,TP					
FC7L	2401-001919	C-AL:2.2uF,20%,50V,GP,4*7,5MM,TP					
FC7R	2401-001919	C-AL:2.2uF,20%,50V,GP,4*7,5MM,TP					
JC9L	2401-001919	C-AL:2.2uF,20%,50V,GP,4*7,5MM,TP					
JC9R	2401-001919	C-AL:2.2uF,20%,50V,GP,4*7,5MM,TP					
AC4	2401-001919	C-AL:2.2uF,20%,50V,GP,4*7,5MM,TP					
FC11L	2401-001919	C-AL:2.2uF,20%,50V,GP,4*7,5MM,TP					
FC11R	2401-001919	C-AL:2.2uF,20%,50V,GP,4*7,5MM,TP					
FC2L	2401-001919	C-AL:2.2uF,20%,50V,GP,4*7,5MM,TP					
FC2R	2401-001919	C-AL:2.2uF,20%,50V,GP,4*7,5MM,TP					
FC4L	2401-001919	C-AL:2.2uF,20%,50V,GP,4*7,5MM,TP					
FC4	2401-001919	C-AL:2.2uF,20%,50V,GP,4*7,5MM,TP					
FC3R	2401-001919	C-AL:2.2uF,20%,50V,GP,4*7,5MM,TP					
FC3L	2401-001919	C-AL:2.2uF,20%,50V,GP,4*7,5MM,TP					
UC6	2401-001952	C-AL:4.7uF,20%,50V,GP,TP,5x7mm,5mm					
UC7	2401-001952	C-AL:4.7uF,20%,50V,GP,TP,5x7mm,5mm					
UC8	2401-001952	C-AL:4.7uF,20%,50V,GP,TP,5x7mm,5mm					
JC5R	2401-001952	C-AL:4.7uF,20%,50V,GP,TP,5x7mm,5mm					
JC5L	2401-001952	C-AL:4.7uF,20%,50V,GP,TP,5x7mm,5mm					
JC4	2401-001952	C-AL:4.7uF,20%,50V,GP,TP,5x7mm,5mm					
JC2	2401-001952	C-AL:4.7uF,20%,50V,GP,TP,5x7mm,5mm					
HL1R	2701-000177	INDUCTOR-AXIAL:33uH,10%,2.5x3.4mm					
HL1L	2701-000177	INDUCTOR-AXIAL:33uH,10%,2.5x3.4mm					
JL1	2701-000298	INDUCTOR-AXIAL:470uH,10%,4.2x9.8mm					
QL1	2701-000298	INDUCTOR-AXIAL:470uH,10%,4.2x9.8mm					
OBD2	3301-000297	CORE-FERRITE BEAD:AA,3.6x1.2x5.7mm,1400,					
OBD1	3301-000297	CORE-FERRITE BEAD:AA,3.6x1.2x5.7mm,1400,					
USW3	3404-000165	SWITCH-TACT;12V,50mA,160gf,6x6mm,SPST					
USW4	3404-000165	SWITCH-TACT;12V,50mA,160gf,6x6mm,SPST					
USW5	3404-000165	SWITCH-TACT;12V,50mA,160gf,6x6mm,SPST					
USW6	3404-000165	SWITCH-TACT;12V,50mA,160gf,6x6mm,SPST					
USW7	3404-000165	SWITCH-TACT;12V,50mA,160gf,6x6mm,SPST					
USW8	3404-000165	SWITCH-TACT;12V,50mA,160gf,6x6mm,SPST					
USW9	3404-000165	SWITCH-TACT;12V,50mA,160gf,6x6mm,SPST					
USW2	3404-000165	SWITCH-TACT;12V,50mA,160gf,6x6mm,SPST					
USW1	3404-000165	SWITCH-TACT;12V,50mA,160gf,6x6mm,SPST					
USW10	3404-000165	SWITCH-TACT;12V,50mA,160gf,6x6mm,SPST					
USW11	3404-000165	SWITCH-TACT;12V,50mA,160gf,6x6mm,SPST					
USW12	3404-000165	SWITCH-TACT;12V,50mA,160gf,6x6mm,SPST					
USW13	3404-000165	SWITCH-TACT;12V,50mA,160gf,6x6mm,SPST					
USW14	3404-000165	SWITCH-TACT;12V,50mA,160gf,6x6mm,SPST					
USW15	3404-000165	SWITCH-TACT;12V,50mA,160gf,6x6mm,SPST					
PF4	3602-000147	FUSE-CLIP;250V,7.5A,30mohm					
PF3	3602-000147	FUSE-CLIP;250V,7.5A,30mohm					
PF2	3602-000147	FUSE-CLIP;250V,7.5A,30mohm					
UIC1	AH11-00076B	MASK ROM:LC866548V-50E0.MM-ZB7/B7,-,;Q					
OIC1	AH14-10004R	IC:M74HCU04,SOP,TAPE 14P					

4. Block Diagram

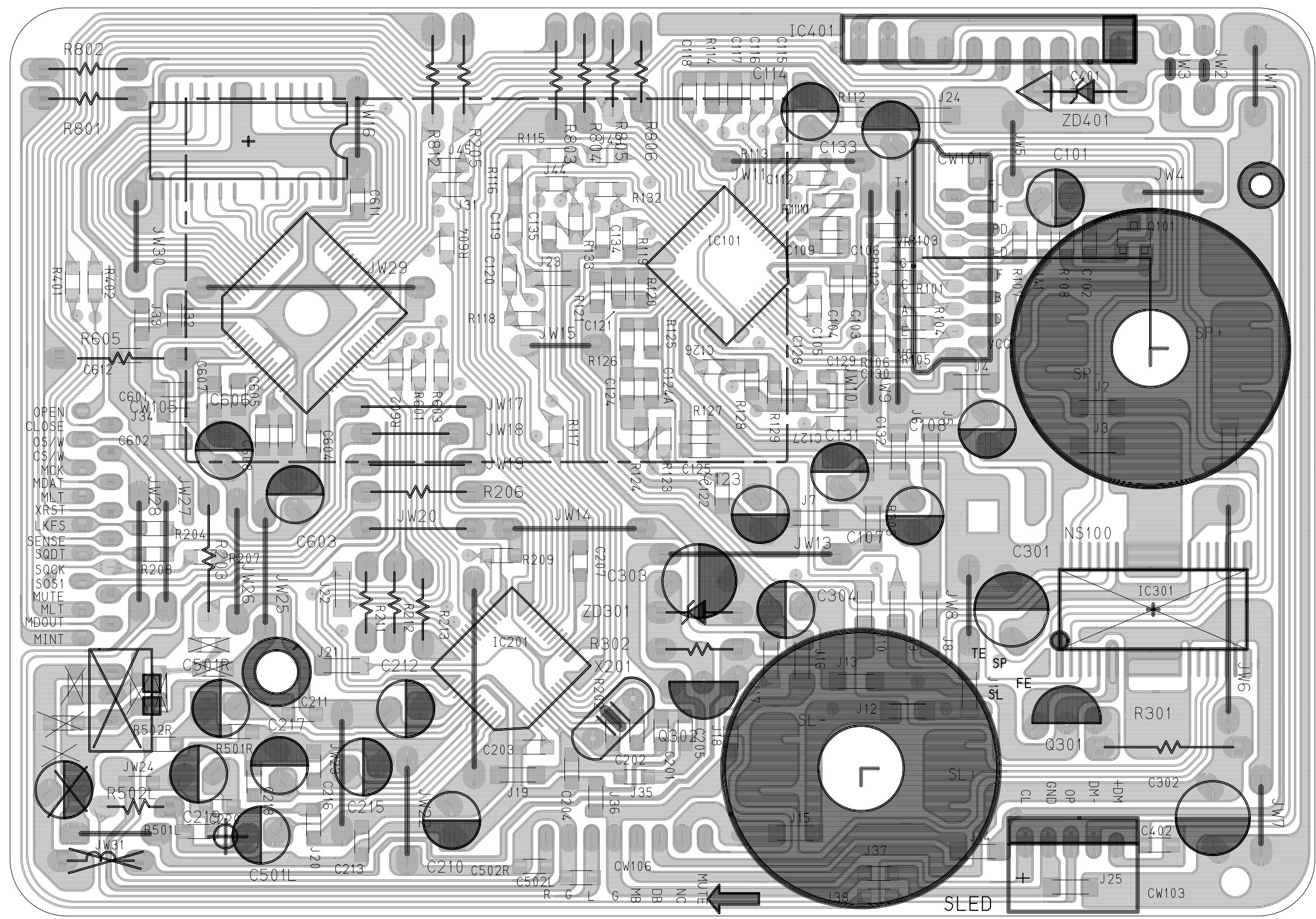
4-1 CD/ MP3 Part

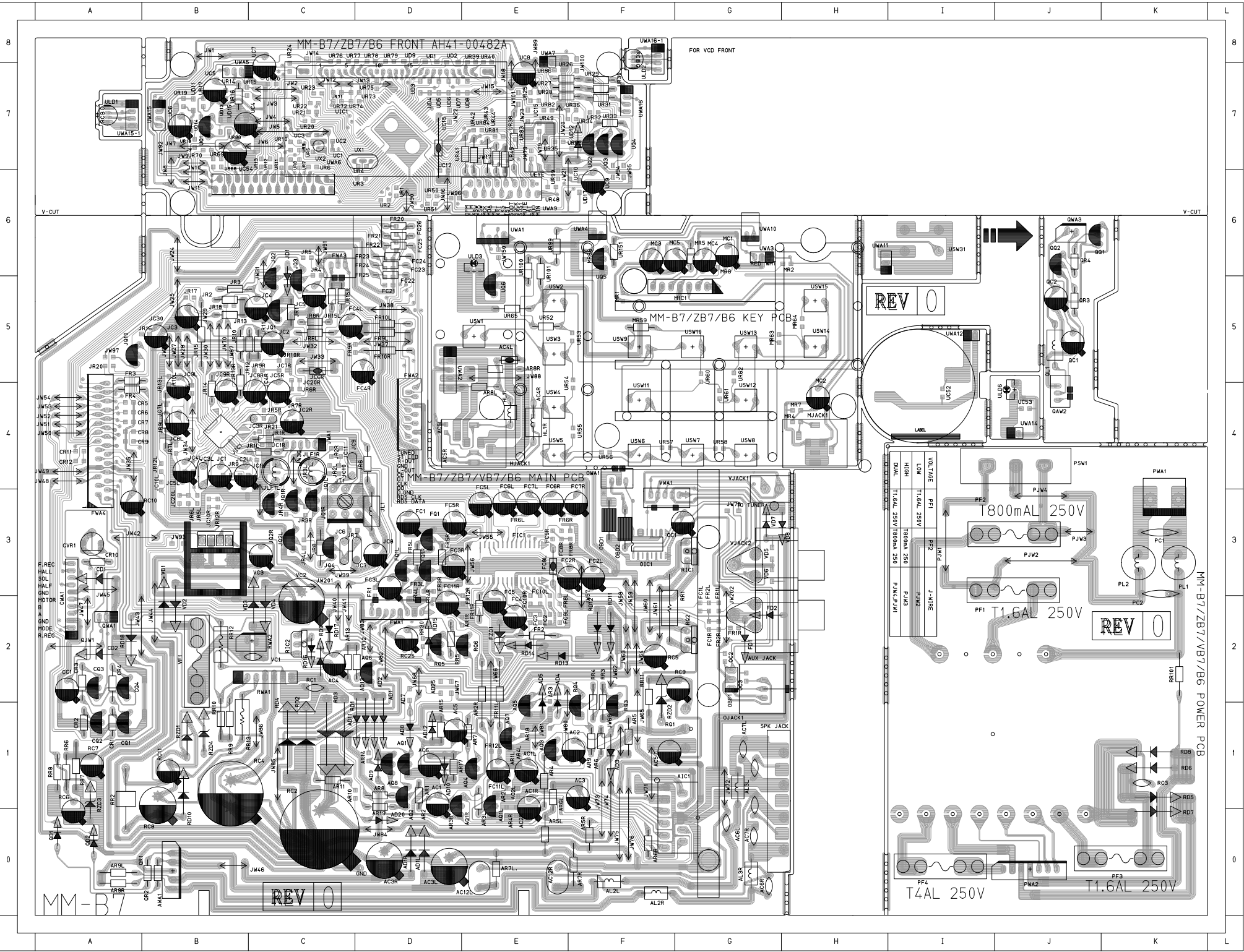




5. Printed Circuit Board Diagram

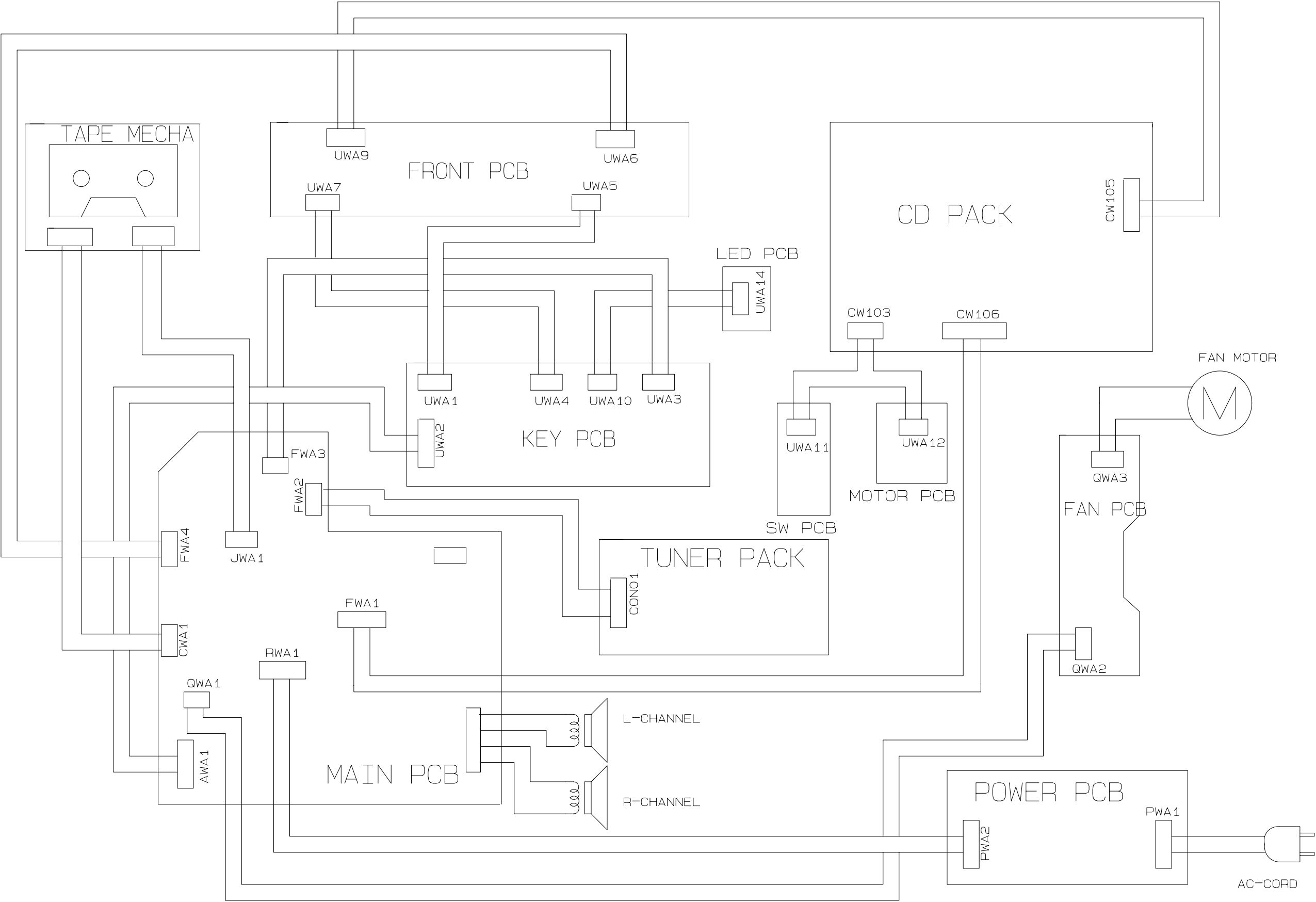
5-1 CD / MP3





*** CONDENSER ***	*** DIODE ***	*** TR ***	*** IC&WAFER ***
AC1 (D1)	AD1 (D1)	AQ1 (D1)	AWA1 (B0)
AC1L (E1)	AD10 (D1)	AQ1L (E0)	CWA1 (A2)
AC1R (E1)	AD11 (D1)	AQ1R (E0)	FWA1 (D2)
AC2 (F1)	AD12 (D1)	AQ2 (D1)	FWA2 (D4)
AC3 (F1)	AD13 (D1)	AQ3 (E1)	FWA3 (G6)
AC3L (D0)	AD1L (D0)	AQ4 (E1)	FWA4 (A3)
AC3R (D0)	AD1R (D0)	AQ5 (E1)	JWA1 (C4)
AC4 (C2)	AD2 (D1)	AQ6 (D2)	MIC1 (G5)
AC4L (E5)	AD20 (D0)	AQ7 (E1)	OIC1 (F3)
AC5 (D1)	AD3 (F1)	AQ8 (D1)	OWA1 (F4)
AC50 (F1)	AD4 (E2)	CQ1 (A1)	PSW1 (J4)
AC6 (D1)	AD5 (E2)	CQ2 (A1)	PWA2 (J0)
CC1 (A2)	AD8 (D1)	CQ3 (A2)	QAW2 (J4)
FC1 (D3)	AD9 (D1)	CQ4 (A2)	QWA1 (A2)
FC1L (E1)	CD1 (A3)	FQ1 (D3)	QWA3 (J6)
FC1R (D3)	CD2 (A2)	FQ1L (D3)	RWA1 (C2)
FC2L (F3)	FD1 (G2)	FQ1R (D3)	RWA2 (C2)
FC2R (F3)	FD2 (G2)	JQ1 (C5)	USW1 (E5)
FC3L (D3)	FZD1 (E2)	JQ10 (A5)	USW10 (G5)
FC3R (D3)	JD1 (C5)	JQ1L (C3)	USW11 (F4)
FC4 (E2)	QD1 (A0)	JQ1R (C3)	USW12 (G4)
FC4L (C5)	QD2 (A0)	JQ2 (C5)	USW13 (G5)
FC4R (D5)	RD10 (B1)	JQ2L (C3)	USW14 (H5)
FC5 (E3)	RD11 (F2)	JQ2R (C3)	USW15 (H5)
FC5L (E3)	RD12 (F2)	JQ3 (C5)	USW2 (E5)
FC5R (D3)	RD13 (E2)	JQ4 (C3)	USW3 (E5)
FC6L (E3)	RD14 (E2)	QQ1 (J6)	USW4 (E4)
FC6R (E3)	RD15 (D2)	QQ2 (J6)	USW5 (E4)
FC7L (E3)	RD16 (C2)	RQ3 (F1)	USW6 (F4)
FC7R (F3)	RD17 (C2)	RQ4 (F1)	USW7 (G4)
FC8L (E3)	RD18 (A2)	RQ5 (D2)	USW8 (G4)
JC1 (B4)	RD5 (K1)	RQ6 (E2)	USW9 (F5)
JC2 (C5)	RD6 (K1)	UQ1 (B7)	UWA1 (E6)
JC2L (B4)	RD7 (K0)	UQ2 (F7)	UWA10 (G6)
JC2R (C4)	RD8 (K1)	UQ3 (F7)	UWA11 (H6)
JC3 (B5)	RD9 (C2)	UQ4 (F7)	UWA12 (I5)
JC30 (B5)	RZD1 (B1)	UQ5 (F6)	UWA14 (J4)
JC4 (C5)	RZD3 (A1)	UQ6 (E5)	UWA15 (B7)
JC5 (C5)	RZD4 (B1)		UWA15-1 (A7)
JC5L (B4)	UD12 (F7)		UWA16 (F7)
JC5R (C5)	VD1 (B3)		UWA16-1 (F8)
JC6R (C5)	VD2 (B2)		UWA2 (D5)
JC8 (D3)	VD3 (C3)		UWA3 (G6)
JC8L (B4)	VD4 (C2)		UWA4 (F6)
JC8R (C5)	VD7 (G3)		UWA5 (B7)
JC9L (B5)	VD8 (H3)		UWA6 (C6)
JC9R (B5)			UWA7 (E8)
MC1 (G6)			UWA1 (F3)
MC2 (H4)			
MC3 (F6)			
MC4 (G6)			
MC5 (G6)			
OB1 (F3)			
OB2 (F3)			
OC1 (G3)			
OC1 (J5)			
OC2 (J5)			
RC10 (A3)			
RC11 (B1)			
RC25 (D2)			
RC5 (F2)			
RC6 (A1)			
RC7 (A1)			
RC8 (B1)			
RC9 (G2)			
UC15 (D6)			
UC4 (B7)			
UC5 (B7)			
UC54 (B7)			
UC6 (B7)			
UC7 (C8)			
UC8 (E7)			
UC9 (F6)			
VC3 (C3)			

6. Wiring Diagram



7-1 CD/MP3 Part

