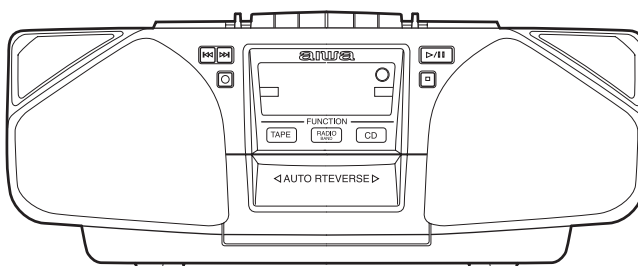


# CSD-FD83 HA, HR, HT, EZ

# CSD-FD85 HR,EZ,K



# SERVICE MANUAL

COMPACT DISC  
STEREO CASSETTE RECORDER

BASIC TAPE MECHANISM : ZZM-1 AR2NC  
BASIC CD MECHANISM : CMS-B31TG6

- This Service Manual is the "Revision Publishing" and replaces "Simple Manual" CSD-FD83(HA,EZ) (S/M Code No. 09-003-424-9T2).
- This Service manual does not include "Electrical adjustment", "IC BLOCK DIAGRAM" and "IC DESCRIPTION". These items will be issued in the next supplement.

# aiwa

S/M Code No. 09-007-424-9R2

REVISION  
DATA

## SPECIFICATIONS

### Tuner section

Frequency range, antenna	FM: 87.5 MHz to 108 MHz, Rod antenna <b>85HR,83HR,83HA,83HT:</b> AM: 531/530 - 1,602/1,710 kHz (9/10 kHz step), Ferrite bar antenna <b>EZ,K:</b> MW: 531/530 - 1,602/1,710 kHz (9/10 kHz step), Ferrite bar antenna LW: 153 - 288 kHz, Ferrite bar antenna
--------------------------	---

### Power requirements

**83HR,83HA,83HT:**  
4.5W + 4.5W (EIAJ 3.2 ohms, DC),  
3.3W + 3.3W (DIN 1% Rated Power)  
**85HR,83HR,83HA,83HT:**  
DC 12V using eight size C (R14)  
batteries, AC 110-120 V/220-240 V  
switchable, 50/60 Hz

**EZ, K:**  
DC 12V using eight size C (R14)  
batteries, AC 230V, 50 Hz  
**85HR,83HR,83HA,83HT,85EZ,85K:**  
35W

### Power consumption

**83HR,83HA,83HT:**  
22W

### Dimensions (W x H x D)

**85HR,85EZ,85K:**  
460 x 198.3 x 261.2 mm  
**83EZ,83HR,83HA,83HT:**  
460 x 191.9 x 261.2 mm

### Weight (excluding batteries)

**85HR,85EZ,85K:**  
4.7 kg  
**83EZ,83HR,83HA,83HT:**  
4 kg

### Deck section

Track format	4 tracks, 2 channels
Frequency range	Normal tape: 50 - 12,500 Hz(EIAJ)
Recording system	AC bias
Erasing system	Magnet erase
Heads	Recording/playback head (1), Erase head (1)


### CD player section

Disc	Compact disc
Scanning method	Non-contact optical scanner (semiconductor laser)



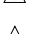

### General

Speaker	100 mm cone type (2), 36 mm cone type (2)
Output	Headphones jack (stereo mini-jack)
Power output	<b>85HR:</b> 10W + 10W (EIAJ 5 ohms DC), 7.2W + 7.2W (DIN 1% Rated Power DC) <b>83EZ:</b> 5W + 5W (DIN MUSIC POWER), 4.5W + 4.5W (EIAJ 3.2 ohms, T.H.D. 10%), 3.3W + 3.3W (DIN 1% Rated Power) <b>85EZ,85K:</b> 16W + 16W (DIN MUSIC POWER), 10W + 10W (EIAJ 5 ohms, T.H.D. 10%), 7.6W + 7.6W (DIN 1% Rated Power)

Corporation.

"DOLBY", the double-D symbol  and "PRO LOGIC" are  
trademarks of Dolby Laboratories Licensing Corporation.

## ACCESSORIES / PACKAGE LIST

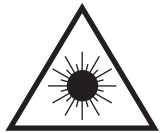
REF. NO.	PART NO.	KANRI NO.	DESCRIPTION
1	8A-CHE-902-110	IB, LH (ESP) B<83HA>	
1	8A-CH4-906-110	IB, EZ (9L) B<83EZ>	
1	8A-CH4-901-110	IB, H (ECA) B<83HR>	
1	8A-CHE-906-110	IB, EZ (9L) B, FD 85<85EZ>	
1	8A-CHE-905-110	IB, K (E) B, FD 85<85K>	
1	8A-CHE-901-110	IB, H (ECA) B, FD 85<85HR>	
1	8A-CH4-911-110	IB, HT (EC-H) B<83HT>	
	2 87-A80-034-010	AC CORD SET ASSY, K<85K>	
	2 87-A80-036-010	AC CORD SET ASSY, E<HR, HT, EZ>	
	2 87-A80-119-010	AC CORD SET ASSY, AZ<83HA>	
	3 87-A91-017-010	PLUG, CONVERSION<HR, 83HA, 83HT>	
	4 8Z-CK4-962-010	RC UNIT, RC-ZAT04	

## PROTECTION OF EYES FROM LASER BEAM DURING SERVICING

This set employs laser. Therefore, be sure to follow carefully the instructions below when servicing.

### WARNING!!

WHEN SERVICING, DO NOT APPROACH THE LASER EXIT WITH THE EYE TOO CLOSELY. IN CASE IT IS NECESSARY TO CONFIRM LASER BEAM EMISSION. BE SURE TO OBSERVE FROM A DISTANCE OF MORE THAN 30cm FROM THE SURFACE OF THE OBJECTIVE LENS ON THE OPTICAL PICK-UP BLOCK.



- Caution: Invisible laser radiation when open and interlocks defeated avoid exposure to beam.
- Advarsel: Usynlig laserstråling ved åbning, når sikkerhedsafbrydere er ude af funktion. Undgå udsættelse for stråling.

### VAROITUS!

Laiteen Käyttäminen muulla kuin tässä käyttöohjeessa mainitulla tavalla saattaa altistaa käyt-täjän turvallisuusluokan 1 ylittävälle näkymättömälle lasersäteilylle.

### WARNING!

Om apparaten används på annat sätt än vad som specificeras i denna bruksanvisning, kan användaren utsättas för osynlig laserstråling, som överskrider gränsen för laserklass 1.

### CAUTION

Use of controls or adjustments or performance of procedures other than those specified herein may result in hazardous radiation exposure.

### ATTENTION

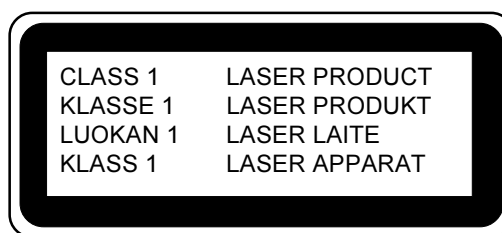
L'utilisation de commandes, réglages ou procédures autres que ceux spécifiés peut entraîner une dangereuse exposition aux radiations.

### ADVARSEL

Usynlig laserstråling ved åbning, når sikkerhedsafbrydere er ude af funktion. Undgå udsættelse for stråling.

This Compact Disc player is classified as a CLASS 1 LASER product.

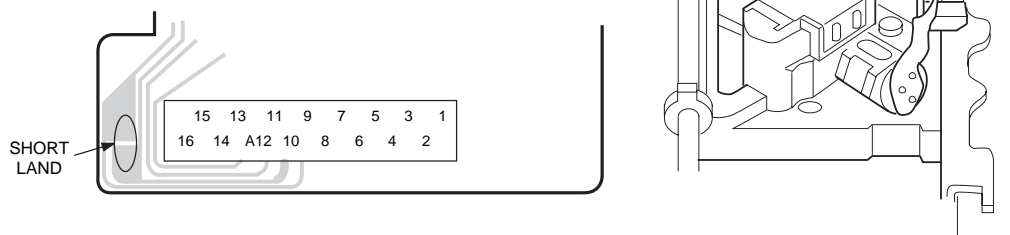
The CLASS 1 LASER PRODUCT label is located on the rear exterior.



## Precaution to replace Optical block

Body or clothes electrostatic potential could ruin laser diode in the optical block. Be sure ground body and workbench, and use care the clothes do not touch the diode.

- 1) After the connection, remove solder shown in the right figure.



## ELECTRICAL MAIN PARTS LIST

\*NOTE:&lt;FD83&gt;=83HR, 83EZ, 83HA, 83HT &lt;FD85&gt;=85HR, 85K, 85EZ

REF. NO.	PART NO.	KANRI NO.	DESCRIPTION	REF. NO.	PART NO.	KANRI NO.	DESCRIPTION
IC				C805	87-012-365-080		C-CAP, S 0.027-25VBK
	87-A21-550-010		IC, TA2149N	C806	87-012-365-080		C-CAP, S 0.027-25VBK
	87-A21-185-040		C-IC, LC72121M	C807	87-010-405-080		CAP, E 10-50<83HR, 83EZ, 83HA, 83HT>
	87-A21-090-010		IC, LA4600<83HR, 83EZ, 83HA, 83HT>	C807	87-010-382-080		CAP, ELECT 22-25V<85HR, 85K, 85EZ>
	87-A21-552-010		IC, LA4663A<85HR, 85K, 85EZ>	C808	87-010-405-080		CAP, E 10-50V<83HR, 83EZ, 83HA, 83HT>
	87-A21-520-040		C-IC, M61509FP				
	87-A20-446-010		C-IC, LA9241ML	C808	87-010-382-080		CAP, ELECT 22-25V<85HR, 85K, 85EZ>
	87-A20-459-010		C-IC, LC78622ED	C809	87-010-401-080		CAP, ELECT 1-50V
	87-A21-093-010		IC, LA6541D	C810	87-010-401-080		CAP, ELECT 1-50V
	8A-CH4-661-010		C-IC, LC867132V-5P07	C811	87-010-178-080		CHIP CAP 1000P
	87-A21-245-010		IC, RPM6938-V4	C812	87-010-178-080		CHIP CAP 1000P
	87-A21-431-010		IC, BA4560N				
TRANSISTOR				C816	87-010-180-080		C-CER 1500P
	89-327-143-080		TR, 2SC2714 (0.1W)	C817	87-010-180-080		C-CER 1500P
	87-026-447-080		TR, 2SC1740S R	C821	87-010-401-080		CAP, ELECT 1-50V
	89-111-624-080		TR, 2SA1162Y	C822	87-010-401-080		CAP, ELECT 1-50V
	87-026-213-080		CHIP-TR, DTC114YK	C823	87-010-178-080		CHIP CAP 1000P
	89-503-025-010		C-FET, 2SK302GR<85K, 83EZ, 85EZ>				
	89-320-011-080		TR, 2SC2001K (15W) <85HR, 85K, EZ>	C824	87-010-178-080		CHIP CAP 1000P
	87-026-230-080		CHIP-TR, DTA114YK<85K, 83EZ, 85EZ>	C829	87-010-178-080		CHIP CAP 1000P
	89-327-125-080		CHIP TR, 2SC2712GR	C830	87-010-178-080		CHIP CAP 1000P
	89-318-154-080		TR, 2SC1815Y (0.4W)	C834	87-010-248-080		CAP, ELECT 220-10V
	89-112-965-080		TR, 2SA1296GR (0.75W)	C843	87-010-197-080		CAP, CHIP 0.01 DM
	87-026-463-080		TR, 2SA933SRS (0.3W)				
	87-026-291-080		TR, DTC124XS	C844	87-018-124-080		CAP, CER 270P-50V
	89-213-702-080		TR, 2SB1370E	C845	87-010-178-080		CHIP CAP 1000P
	89-113-187-080		TR, 2SA1318TU	C846	87-010-263-080		CAP, ELECT 100-10V
	87-026-239-080		C-TR, DTC114TK (0.2W)	C851	87-010-186-080		CAP, CHIP 4700P
	87-026-210-080		CHIP-TR, DTC144EKA	C852	87-010-178-080		CHIP CAP 1000P
	87-026-464-080		TR, DTC114TS (0.3W)				
DIODE				C853	87-A11-132-080		CAP, TC U 0.01-50 K B
	87-070-345-080		DIODE, IN4148	CN201	87-099-018-010		CONN, 16P<83HR, 83EZ, 83HA, 83HT>
	87-017-072-080		ZENER, HZS3B1	CN201	8A-CHE-621-010		CONN, 16P V 6207<85HR, 85K, 85EZ>
	87-027-703-080		ZENER, HZ7A1L (5MA)	CN801	87-A60-110-010		CONN, 4P V S2M-4W
	87-A40-648-080		ZENER, MTZJ8.2A	CNA302	8A-CH4-629-010		CONN ASSY, 6P MA-TU
	87-A40-234-080		ZENER, MTZJ5.6A				
	87-017-978-080		DIODE, 1N4003	CNA803	8A-CH4-623-010		CONN ASSY, 2P KEY
	87-027-702-080		DIODE, ZENER HZ6C2L (200MA)	FC201	8A-CD9-620-010		FF-CABLE, 16P FR-MAIN
	87-020-465-080		DIODE, 1SS133 (110MA)	L201	87-003-097-080		COIL, 1UH<85HR, 85K, 85EZ>
	87-070-178-090		DIODE, 1N5402-BD54<85HR, 85K, 85EZ>	L202	87-003-097-080		COIL, 1UH<85HR, 85K, 85EZ>
	87-A40-465-010		DIODE, FR202<83HR, 83EZ, 83HA, 83HT>	L203	87-003-097-080		COIL, 1UH<85HR, 85K, 85EZ>
MAIN C.B				L801	87-007-342-010		COIL, OSC 85K BIAS
	C211	87-010-805-080	CAP, S 1-16	SW801	8Z-CD9-609-010		SW, SL 1-6-2 PS62D01
	C212	87-010-805-080	CAP, S 1-16				
	C215	87-016-460-080	C-CAP, S 0.22-16 B	CD C.B			
	C216	87-016-460-080	C-CAP, S 0.22-16 B	C30	87-010-260-080		CAP, E 47-25V
	C231	87-010-213-080	C-CAP, S 0.015-50 B	C251	87-010-404-080		CAP, E 4.7-50V<83HR, 83EZ, 83HA, 83HT>
	C232	87-010-213-080	C-CAP, S 0.015-50 B	C263	87-010-178-080		CHIP CAP 1000P<FD83>
	C233	87-A10-201-080	C-CAP, S0.33-16 KB	C264	87-010-178-080		CHIP CAP 1000P<FD83>
	C234	87-A10-201-080	C-CAP, S0.33-16 KB	C266	87-010-545-080		CAP, E 0.22-50V<FD83>
	C235	87-016-669-080	C-CAP, S 0.1-25 K B				
	C236	87-016-669-080	C-CAP, S 0.1-25 K B	C267	87-010-545-080		CAP, E 0.22-50V<FD83>
	C237	87-010-408-080	CAP, ELECT 47-50V<85HR, 85K, 85EZ>	C271	87-010-237-080		CAP, ELECT 1000-16V<FD83>
	C237	87-010-371-080	CAP, E 470-6.3<83HR, 83EZ, 83HA, 83HT>	C272	87-010-237-080		CAP, ELECT 1000-16V<FD83>
	C239	87-010-197-080	CAP, CHIP 0.01 DM	C276	87-010-237-080		CAP, ELECT 1000-16V<85HR, 85K, 85EZ>
	C240	87-010-197-080	CAP, CHIP 0.01 DM	C277	87-010-237-080		CAP, ELECT 1000-16V<85HR, 85K, 85EZ>
	C247	87-010-401-080	CAP, ELECT 1-50V	C277	87-010-404-080		CAP, E 4.7-50V<83HR, 83EZ, 83HA, 83HT>
	C248	87-010-401-080	CAP, ELECT 1-50V	C278	87-010-263-080		CAP, ELECT 100-10V<83EZ>
	C309	87-010-197-080	CAP, CHIP 0.01<85HR, 85K, 85EZ, 83HA>	C279	87-010-405-080		CAP, ELECT 10-50V<83HR, 83HA, 83HT>
	C310	87-010-248-080	CAP, ELECT 220-10V	C279	87-010-263-080		CAP, ELECT 100-10V<83EZ>
	C316	87-010-263-080	CAP, ELECT 100-10V<83HR, 83HA, 83HT>	C281	87-010-263-080		CAP, ELECT 100-10V<85HR, 85K, 85EZ>
	C317	87-010-197-080	CAP, CHIP 0.01 DM<EXCEPT 83EZ>				
	C801	87-010-248-080	CAP, ELECT 220-10V	C301	87-010-121-010		CAP, E 6800-25V<85HR, 85K, 85EZ>
				C301	87-016-495-000		CAP, E 3300-25<83HR, 83EZ, 83HA, 83HT>
				C302	87-010-265-080		CAP, ELECT 33-16V<85HR, 85K, 85EZ>
				C306	87-010-404-080		CAP, ELECT 4.7-50V
				C307	87-010-401-080		CAP, ELECT 1-50V
				C308	87-010-221-080		CAP, ELECT 470-10V
				C311	87-010-263-080		CAP, ELECT 100-10V
				C312	87-010-385-080		CAP, ELECT 220-25V
				C321	87-010-197-080		CAP, CHIP 0.01 DM
				C322	87-010-263-080		CAP, ELECT 100-10V
				C325	87-010-405-080		CAP, ELECT 10-50V
				C401	87-010-403-080		CAP, ELECT 3.3-50V
				C402	87-010-197-080		CAP, CHIP 0.01 DM
				C403	87-010-263-080		CAP, ELECT 100-10V
				C404	87-010-248-080		CAP, ELECT 220-10V



\*NOTE:<FD83>=83HR,83EZ,83HA,83HT <FD85>=85HR,85K,85EZ

REF. NO.	PART NO.	KANRI NO.	DESCRIPTION	REF. NO.	PART NO.	KANRI NO.	DESCRIPTION
C405	87-010-197-080		CAP,CHIP 0.01 DM	C492	87-010-221-080		CAP,ELECT 470-10V
C406	87-010-374-080		CAP,ELECT 47-10V	C493	87-010-190-080		S CHIP F 0.01
C407	87-010-178-080		CHIP CAP 1000P	C494	87-A11-155-080		CAP,TC U 0.01-16 Z F
C408	87-010-198-080		CAP,CHIP 0.022	C501	87-012-368-080		C-CAP,S 0.1-50 F
C409	87-010-248-080		CAP,ELECT 220-10V	C502	87-010-322-080		C-CAP,S 100P-50 CH
C410	87-010-263-080		CAP,ELECT 100-10V	C503	87-010-322-080		C-CAP,S 100P-50 CH
C411	87-A11-177-080		C-CAP,S 0.15-16 K B	C504	87-010-322-080		C-CAP,S 100P-50 CH
C412	87-010-401-080		CAP,ELECT 1-50V	C505	87-010-322-080		C-CAP,S 100P-50 CH
C413	87-016-369-080		C-CAP,S 0.033-25 B K	C506	87-010-322-080		C-CAP,S 100P-50 CH
C414	87-010-405-080		CAP,ELECT 10-50V	C510	87-016-669-080		C-CAP,S 0.1-25 K B
C416	87-010-545-080		CAP,ELECT 0.22-50V	C831	87-010-198-080		CAP,CHIP 0.022
C417	87-012-157-080		C-CAP,S 330P-50 CH	CN202	8A-CH4-693-010		CONN,5P V 2.5
C418	87-010-213-080		C-CAP,S 0.015-50 B	CN203	8A-CH4-687-010		CONN,4P V 2.5<85HR,85K,85EZ>
C419	87-A11-608-080		C-CAP,S 0.33-25 K B	CN205	87-A60-109-010		CONN,2P V S2M-2W
C420	87-016-369-080		C-CAP,S 0.033-25 B K	CN301	8A-CH4-689-010		CONN,3P V 2.5
C421	87-A11-177-080		C-CAP,S 0.15-16 K B	CN303	8A-CH4-686-010		CONN,2P V 2.5<83HR,83EZ,83HA,83HT>
C422	87-010-183-080		C-CAP,S 2700P-50 B	CN304	8A-CH4-686-010		CONN,2P V 2.5<83HR,83EZ,83HA,83HT>
C423	87-010-956-080		CHIP-CAP,S 0.068-25B	CN401	87-A60-424-010		CONN,16P V TOC-B
C424	87-010-993-080		C-CAP,S 0.056-25 B	CN403	87-099-201-010		CONN,8P 6216 H
C425	87-010-176-080		C-CAP,S 680P-50 SL	CN802	8A-CH4-692-010		CONN,4P H 2.5
C426	87-A11-608-080		C-CAP,S 0.33-25 K B	CNA204	8A-CHE-631-010		CONN ASSY,6P I-AMP<85HR,85K,85EZ>
C428	87-010-197-080		CAP,CHIP 0.01 DM	CNA212	8A-CHE-632-010		CONN ASSY,6P O-AMP<85HR,85K,85EZ>
C429	87-010-186-080		CAP,CHIP 4700P	CNA402	8A-CD9-625-010		CONN ASSY,6P CD-ME
C430	87-012-156-080		C-CAP,S 220P-50 CH	FC401	8A-CD9-621-010		FF-CABLE, 16P CD-RF
C431	87-010-545-080		CAP,ELECT 0.22-50V	FC403	8A-CD9-622-010		FF-CABLE, 8P CD-FR
C432	87-010-374-080		CAP,ELECT 47-10V	L401	87-003-102-080		COIL,10UH
C433	87-010-401-080		CAP,ELECT 1-50V	L402	87-003-098-080		COIL,2.2UH<85HR,85K,85EZ>
C434	87-010-184-080		CHIP CAPACITOR 3300P(K)	L404	87-003-152-080		COIL,100UH
C435	87-010-197-080		CAP,CHIP 0.01 DM	R840	87-029-124-010		RES,FUSE 2.2-1/4
C436	87-010-374-080		CAP,ELECT 47-10V	SFR430	87-024-437-080		SFR100K,RH063EC
C437	87-010-404-080		CAP,ELECT 4.7-50V	SW205	87-036-389-010		SW,PUSH 1-1-1 R8120125
C438	87-016-669-080		C-CAP,S 0.1-25 K B	X401	8Z-CD5-633-010		VIB,CER16.93MHZ FCR16.93M2
C439	87-010-178-080		CHIP CAP 1000P				
C440	87-010-145-080		C-CAP,S 1P-50 CH				
C441	87-010-197-080		CAP,CHIP 0.01 DM		POWER AMP C.B<85HR,85K,85EZ>		
C442	87-010-312-080		C-CAP,S 15P-50 CH	C251	87-010-401-080		CAP,ELECT 1-50V<85HR,85K,85EZ>
C445	87-012-368-080		C-CAP,S 0.1-50 F	C255	87-010-260-080		CAP,ELECT 47-25V<85HR,85K,85EZ>
C446	87-012-368-080		C-CAP,S 0.1-50 F	C263	87-018-121-080		CAP,CER 150P-50V<85HR>
C447	87-012-368-080		C-CAP,S 0.1-50 F	C264	87-018-121-080		CAP,CER 150P-50V<85HR>
C448	87-010-315-080		C-CAP,S 27P-50 CH	C267	87-010-404-980		CAP,E 4.7-50 M SME<85HR,85K,85EZ>
C450	87-012-140-080		CAP 470P	C268	87-010-404-980		CAP,E 4.7-50 M SME<85HR,85K,85EZ>
C451	87-012-156-080		C-CAP,S 220P-50 CH	C269	87-010-384-080		CAP,ELECT 100-25V<85HR,85K,85EZ>
C455	87-010-247-080		CAP,ELECT 100-50V	C274	87-018-209-080		CAP,CER 0.1-50V<85HR,85K,85EZ>
C457	87-010-312-080		C-CAP,S 15P-50 CH	C275	87-010-260-080		CAP,ELECT 47-25V<85HR,85K,85EZ>
C458	87-010-312-080		C-CAP,S 15P-50 CH	C278	87-010-378-080		CAP,ELECT 10-16V<85HR,85K,85EZ>
C459	87-010-263-080		CAP,ELECT 100-10V	C279	87-010-236-080		CAP,E 1000-10 SME<85HR,85K,85EZ>
C460	87-015-819-080		CAPACITOR,0.01	C280	87-010-236-080		CAP,E 1000-10 SME<85HR,85K,85EZ>
C461	87-010-197-080		CAP,CHIP 0.01 DM	CN204	8A-CH4-688-010		CONN,6P V 2.5<85HR,85K,85EZ>
C462	87-010-248-080		CAP,ELECT 220-10V	CN212	8A-CH4-688-010		CONN,6P V 2.5<85HR,85K,85EZ>
C463	87-A11-155-080		CAP,TC U 0.01-16 Z F	CNA211	8A-CHE-638-010		CONN ASSY,6P S-PWR<85HR,85K,85EZ>
C465	87-010-404-080		CAP,ELECT 4.7-50V	R275	87-025-329-080		RESISTOR, 1/4W 2.2<85HR,85K,85EZ>
C466	87-012-368-080		C-CAP,S 0.1-50 F	R276	87-025-329-080		RESISTOR, 1/4W 2.2<85HR,85K,85EZ>
C467	87-010-263-080		CAP,ELECT 100-10V	R277	87-025-329-080		RESISTOR, 1/4W 2.2<85HR,85K,85EZ>
C469	87-012-154-080		C-CAP,S 150P-50 CH	R278	87-025-329-080		RESISTOR, 1/4W 2.2<85HR,85K,85EZ>
C470	87-010-544-080		CAP,ELECT 0.1-50V				
C471	87-010-196-080		CHIP CAPACITOR,0.1-25	FRONT C.B			
C472	87-015-785-080		CHIP CAPACITOR, 0.1FZ-25Z				
C473	87-015-785-080		CHIP CAPACITOR, 0.1FZ-25Z	C601	87-010-313-080		CAP,CHIP 18P
C474	87-010-196-080		CHIP CAPACITOR,0.1-25	C602	87-010-315-080		C-CAP,S 27P-50 CH
C475	87-010-197-080		CAP,CHIP 0.01 DM	C603	87-010-319-080		C-CAP,S 56P-50 CH
				C604	87-010-312-080		C-CAP,S 15P-50 CH
				C605	87-010-317-080		C-CAP,S 39P-50 CH
C476	87-010-236-080		CAP,E 1000-10 SME				
C477	87-010-197-080		CAP,CHIP 0.01 DM	C608	87-010-196-080		CHIP CAPACITOR,0.1-25
C478	87-010-263-080		CAP,ELECT 100-10V	C610	87-010-555-040		CAP,E 100-10 GAS
C479	87-010-197-080		CAP,CHIP 0.01 DM	C611	87-010-196-080		CHIP CAPACITOR,0.1-25
C480	87-010-221-080		CAP,ELECT 470-10V	C612	87-A10-189-040		CAP,E 220-10
				C613	87-010-495-040		CAP,E 2.2-50 GAS
C481	87-010-405-080		CAP,ELECT 10-50V				
C482	87-010-405-080		CAP,ELECT 10-50V				
C489	87-012-368-080		C-CAP,S 0.1-50 F	C614	87-010-196-080		CHIP CAPACITOR,0.1-25
C490	87-012-368-080		C-CAP,S 0.1-50 F	C615	87-010-493-040		CAP,E 0.47-50 GAS
C491	87-010-197-080		CAP,CHIP 0.01 DM	C616	87-010-494-040		CAP,E 1-50 GAS

REF. NO.	PART NO.	KANRI NO.	DESCRIPTION	REF. NO.	PART NO.	KANRI NO.	DESCRIPTION
C617	87-010-178-080		CHIP CAP 1000P	C39	87-010-404-080		CAP,ELECT 4.7-50V
C618	87-010-498-040		CAP,E 10-16 GAS	C40	87-010-197-080		CAP,CHIP 0.01 DM
C620	87-015-785-080		CHIP CAPACITOR, 0.1FZ-25Z	C41	87-010-178-080		CHIP CAP 1000P
C625	87-010-196-080		CHIP CAPACITOR,0.1-25	C42	87-010-178-080		CHIP CAP 1000P
CN601	87-099-033-010		16P 6216 H	C43	87-010-178-080		CHIP CAP 1000P
CN602	87-099-201-010		CONN,8P 6216 H	C44	87-010-311-080		CAP 12P
CNA603	8A-CH4-624-010		CONN ASSY,4P TU-FR	C45	87-010-312-080		C-CAP,S 15P-50 CH
JW611	87-003-097-080		COIL,1UH	C46	87-010-197-080		CAP,CHIP 0.01 DM
JW612	87-003-097-080		COIL,1UH	C47	87-010-197-080		CAP,CHIP 0.01 DM
JW637	87-003-097-080		COIL,1UH	C48	87-010-197-080		CAP,CHIP 0.01 DM
LCD601	8Z-CH4-635-010		LCD,HLC7365 ZCH-4	C49	87-012-140-080		CAP 470P
LED602	88-CD6-630-010		LED,934ID RED	C50	87-010-197-080		CAP,CHIP 0.01 DM
LED603	88-CD6-630-010		LED,934ID RED	C51	87-010-316-080		C-CAP,S 33P-50 CH<85K,83EZ,85EZ>
LED604	88-CD6-630-010		LED,934ID RED	C52	87-010-197-080		CAP,CHIP 0.01 DM<85K,83EZ,85EZ>
LED606	88-CD6-630-010		LED,934ID RED	C53	87-010-197-080		CAP,CHIP 0.01 DM<85K,83EZ,85EZ>
LED607	88-CD6-630-010		LED,934ID RED	C54	87-014-055-080		CAP,PP 820P-100 J<85K,83EZ,85EZ>
LED610	88-CD6-630-010		LED,934ID RED	C55	87-010-197-080		CAP,CHIP 0.01 DM<85K,83EZ,85EZ>
LED611	88-CD6-631-010		LED,934GD GRN	C56	87-010-312-080		C-CAP,S 15P-50 CH<85K,83EZ,85EZ>
LED612	88-CD6-630-010		LED,934ID RED	C71	87-010-197-080		CAP,CHIP 0.01 DM
S601	87-A91-704-080		SW,TACT EVQ 214 05R	C72	87-010-263-080		CAP,ELECT 100-10V
S603	87-A91-704-080		SW,TACT EVQ 214 05R	C73	87-010-197-080		CAP,CHIP 0.01 DM
S604	87-A91-704-080		SW,TACT EVQ 214 05R	C75	87-010-197-080		CAP,CHIP 0.01 DM
S605	87-A91-704-080		SW,TACT EVQ 214 05R	C92	87-010-197-080		CAP,CHIP 0.01 DM
S606	87-A91-704-080		SW,TACT EVQ 214 05R	C93	87-010-197-080		CAP,CHIP 0.01 DM
S607	87-A91-704-080		SW,TACT EVQ 214 05R	CF1	87-A91-094-010		FLTR,CDA10.7 MG80A
S608	87-A91-704-080		SW,TACT EVQ 214 05R	CF2	87-008-261-010		FILTER,SFE10.7MA5-A
S613	87-A91-704-080		SW,TACT EVQ 214 05R	CF3	87-008-261-010		FILTER,SFE10.7MA5-A
S621	87-A91-704-080		SW,TACT EVQ 214 05R	CN2	87-099-854-010		CONN,6P S2M-6W
S622	87-A91-704-080		SW,TACT EVQ 214 05R	CN3	87-A60-110-010		CONN,4P V S2M-4W
S623	87-A91-704-080		SW,TACT EVQ 214 05R	D3	87-A40-616-070		VARI-CAP,SVC384 (S/T)
X601	87-030-273-010		VIB,XTAL 32.768K5PPM	D4	87-A40-128-080		C-VARI-CAP,HVU202A
X602	87-030-376-080		VIB,CER CSA5.76MG200	D5	87-A40-128-080		C-VARI-CAP,HVU202A
TUNER C.B				HD1	88-CD6-661-010		HLDR,BAR ANT.
				HD2	88-CD6-661-010		HLDR,BAR ANT.
				L2	87-A50-560-010		COIL,FM BPF(ACD)
C1	87-010-312-080		C-CAP,S 15P-50 CH	L3	8A-CH4-670-010		BAR-ANT,MW 2B-ACH<HR,83HA,83HT>
C2	87-010-316-080		C-CAP,S 33P-50 CH	L3	8A-CH4-671-010		BAR-ANT,MW/LW 3B-ACH<85K,EZ>
C3	87-010-312-080		C-CAP,S 15P-50 CH	L4	87-A50-420-010		COIL,MW OSC (SYN)
C5	87-016-669-080		C-CAP,S 0.1-25 K B<HR,83HA,83HT>	L5	87-A50-566-010		COIL,FM RF EX (ACH)
C5	87-012-360-080		CAP,CER 1-10<85K,83EZ,85EZ>	L6	87-A50-567-010		COIL,FM OSC (ACH)
C6	87-010-313-080		CAP,CHIP 18P<83HR,85HR,83HA,83HT>	L7	87-A91-308-010		FLTR,PCFAZH- 450T (TOK)
C7	87-014-049-080		CAP,PP 470P-100 J	L8	87-005-849-080		COIL,10UH (CECS)
C8	87-012-349-080		C-CAP,S 1000P-50 CH	L51	87-A50-421-010		COIL,LW OSC (SYN)<85K,83EZ,85EZ>
C10	87-010-197-080		CAP,CHIP 0.01 DM	TC1	87-011-254-080		TRIMER,20P LAR
C11	87-010-197-080		CAP,CHIP 0.01 DM	TC51	87-A91-659-010		TRIMMER,50P 4.0X4.5 <85K,EZ>
C12	87-010-197-080		CAP,CHIP 0.01 DM	X1	87-A70-061-010		VIB,XTAL 4.500MHZ CSA-309
C13	87-010-150-080		C-CAP,S 6P-50 CH	HP C.B			
C14	87-010-303-080		C-CAP,S 330P-50CH				
C15	87-010-178-080		CHIP CAP 1000P	C275	87-016-280-080		CAP,E 3.3-50 M BP <FD83>
C16	87-010-374-080		CAP,ELECT 47-10V	C276	87-016-280-080		CAP,E 3.3-50 M BP <FD83>
C17	87-010-198-080		CAP,CHIP 0.022	CN204	8A-CH4-687-010		CONN,4P V 2.5<83HR,83EZ,83HA,83HT>
C18	87-015-835-080		C-CAP,0.047 D	CNA202	8A-CHE-634-010		CONN ASSY,5P MA-MPUHP<FD85>
C19	87-010-263-080		CAP,ELECT 100-10V	CNA203	8A-CH4-628-010		CONN ASSY,5P MA-HP<FD83>
C20	87-010-404-080		CAP,ELECT 4.7-50V				
C21	87-010-197-080		CAP,CHIP 0.01 DM	J251	87-A60-569-010		JACK,HTJ-035-18
C22	87-010-197-080		CAP,CHIP 0.01 DM	L283	87-003-098-080		COIL,2.2UH<85HR,85K,85EZ>
C23	87-010-197-080		CAP,CHIP 0.01 DM	KEY C.B			
C24	87-010-303-080		C-CAP,S 330P-50CH				
C25	87-016-460-080		C-CAP,S 0.22-16 B	CN605	87-A60-109-010		CONN,2P V S2M-2W
C27	87-A11-067-080		C-CAP,S 1-10 K B	S614	87-A91-704-080		SW,TACT EVQ 214 05R
C28	87-016-669-080		C-CAP,S 0.1-25 K B	S615	87-A91-704-080		SW,TACT EVQ 214 05R
C29	87-016-669-080		C-CAP,S 0.1-25 K B	BATT1 C.B			
C30	87-010-220-080		C-CAP,S 0.018-25 B				
C31	87-010-220-080		C-CAP,S 0.018-25 B				
C33	87-012-358-080		C-CAP,S 0.47-10 F Z	C901	87-018-209-080		CAP, CER 0.1-50V<85HR,85K,85EZ>
C34	87-012-358-080		C-CAP,S 0.47-10 F Z	C901	87-018-205-080		CAP, CERA-SOL 0.022<FD83>
C35	87-015-819-080		CAPACITOR,0.01	C902	87-018-209-080		CAP, CER 0.1-50V<85HR,85K,85EZ>
C36	87-010-263-080		CAP,ELECT 100-10V	C902	87-018-205-080		CAP, CERA-SOL 0.022<FD83>
C37	87-010-197-080		CAP,CHIP 0.01 DM	C903	87-018-209-080		CAP, CER 0.1-50V<85HR,85K,85EZ>
C38	87-010-263-080		CAP,ELECT 100-10V				

REF. NO.	PART NO.	KANRI NO.	DESCRIPTION
C903	87-018-205-080		CAP, CERA-SOL 0.022<FD83>
C904	87-018-209-080		CAP, CER 0.1-50V<85HR,85K,85EZ>
C904	87-018-205-080		CAP, CERA-SOL 0.022<FD83>
C905	87-018-209-080		CAP, CER 0.1-50V<85HR,85K,85EZ>
C906	87-018-209-080		CAP, CER 0.1-50V<85HR,85K,85EZ>
C907	87-018-209-080		CAP, CER 0.1-50V<85HR,85K,85EZ>
C908	87-018-209-080		CAP, CER 0.1-50V<85HR,85K,85EZ>
CNA901	8A-CD9-627-010		CONN ASSY,3P PWR<FD83>
CNA901	8A-CHE-637-010		CONN ASSY,3P PWRUHP<85HR,85K,85EZ>
△ F901	87-035-192-010		FUSE, 4AT 250V T218<85HR,85K,85EZ>
△ F901	87-035-347-010		FUSE,2.5A 250V T<FD83>
△ FC901	87-033-213-010		CLAMP,FUSE SMK
△ FC902	87-033-213-010		CLAMP,FUSE SMK

BATT2 C.B

SP C.B<83HR,83EZ,83HA,83HT>

CNA204 8A-CH4-633-010 CONN ASSY,4P SP

POWER SAVE SW C.B<85HR,85K,85EZ>

S270 87-A91-377-010 SW,PUSH 2-2-2 SPUN192600

SP-L C.B<85HR,85K,85EZ>

C291 87-010-627-080 CAP,E 2.2-16 M 5L BP SRE  
C293 87-010-627-080 CAP,E 2.2-16 M 5L BP SRE  
CN291 8A-CH4-686-010 CONN,2P V 2.5

SP-R C.B<85HR,85K,85EZ>

C292 87-010-627-080 CAP,E 2.2-16 M 5L BP SRE  
C294 87-010-627-080 CAP,E 2.2-16 M 5L BP SRE  
CN292 8A-CH4-686-010 CONN,2P V 2.5

AC VOLTAGE SW C.B<83HR,85HR,83HA,83HT>

△ SW901 87-A91-369-010 SW,AC SL 2 2 2

CD MOTOR C.B

M1 SJ-310-060-1A0 MOTOR,FEED  
SW1 S4-090-001-740 SW,LEAF  
PN SJ-370-060-1A0 CONN,WAFER

## TRANSISTOR ILLUSTRATION



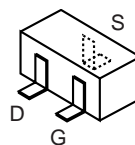
E C B

2SA1296  
2SA1318  
2SC1815



E C B

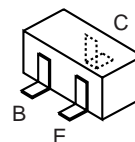
2SA933S  
2SC1740S  
2SC2001  
DTC114TS  
DTC124XS



2SK302



B C E  
2SB1370



2SA1162  
2SC2712  
2SC2714  
DTA114YK  
DTC114TK  
DTC114YK  
DTC144EKA

## チップ抵抗部品コード／CHIP RESISTOR PART CODE

チップ抵抗部品コードの成り立ち


Chip Resistor Part Coding

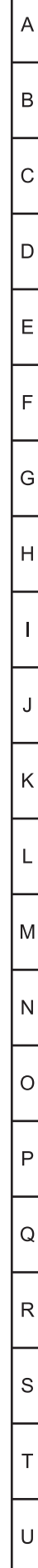
8 8 - □ □ □ □ □ □ □

A  
抵抗部品コード  
Resistor Code

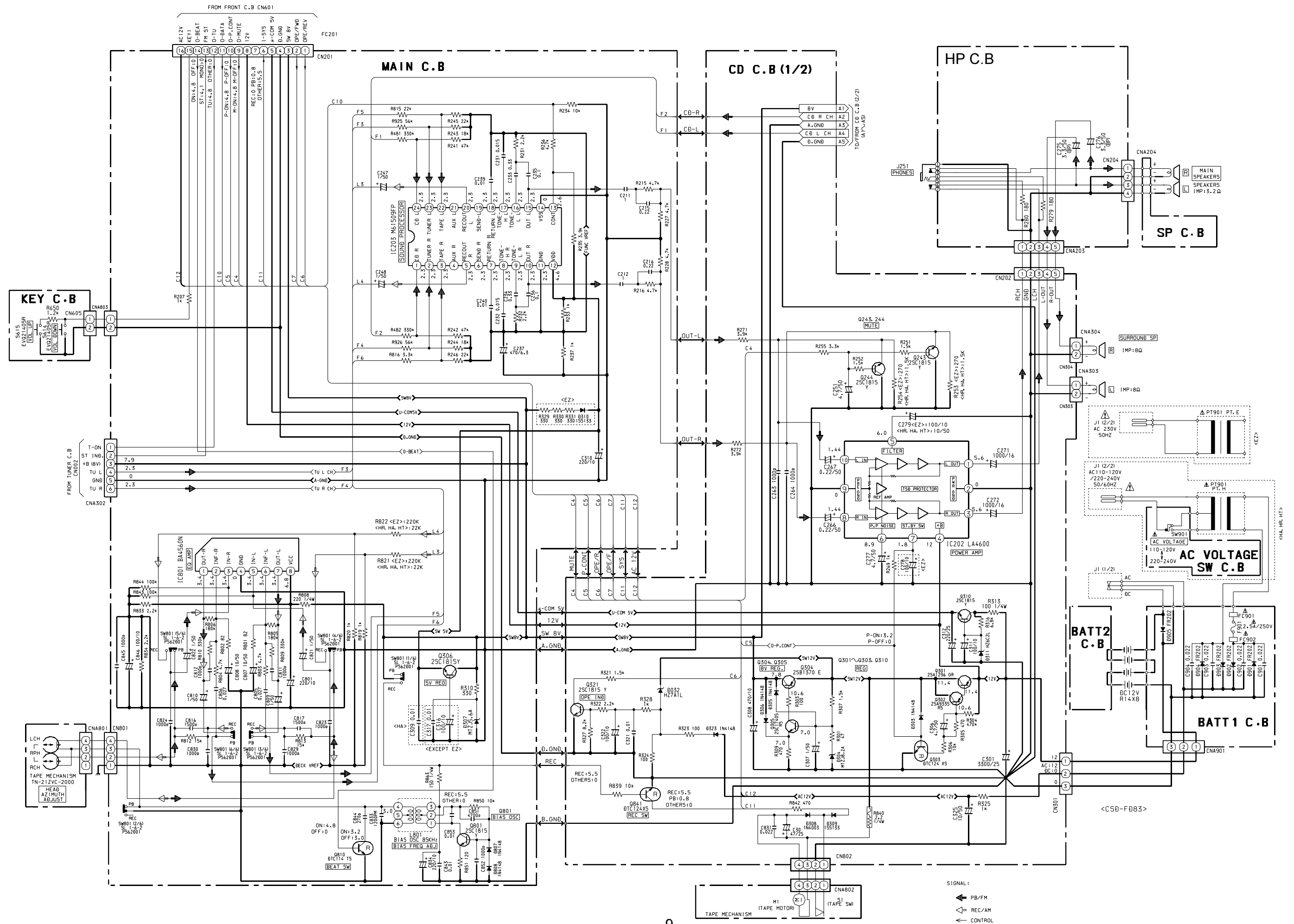
桁表示  
Figure  
抵抗値  
Value of resistor

チップ抵抗  
Chip resistor

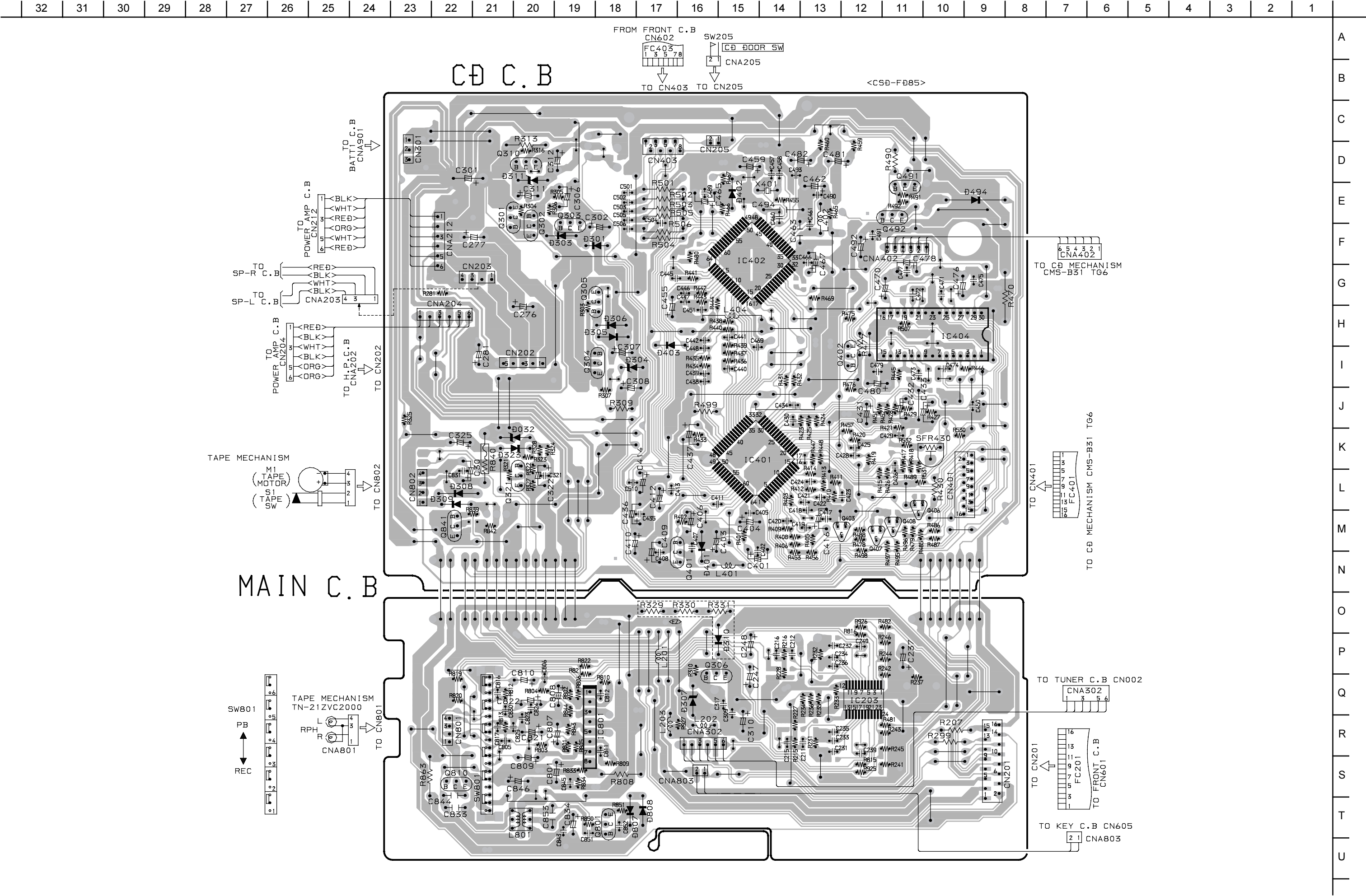
容量 Wattage	種類 Type	許容誤差 Tolerance	記号 Symbol	寸法／Dimensions (mm)				抵抗コード : A Resistor Code : A
				外形／Form	L	W	t	
1/16W	1005	± 5%	CJ		1.0	0.5	0.35	104
1/16W	1608	± 5%	CJ		1.6	0.8	0.45	108
1/10W	2125	± 5%	CJ		2	1.25	0.45	118
1/8W	3216	± 5%	CJ		3.2	1.6	0.55	128



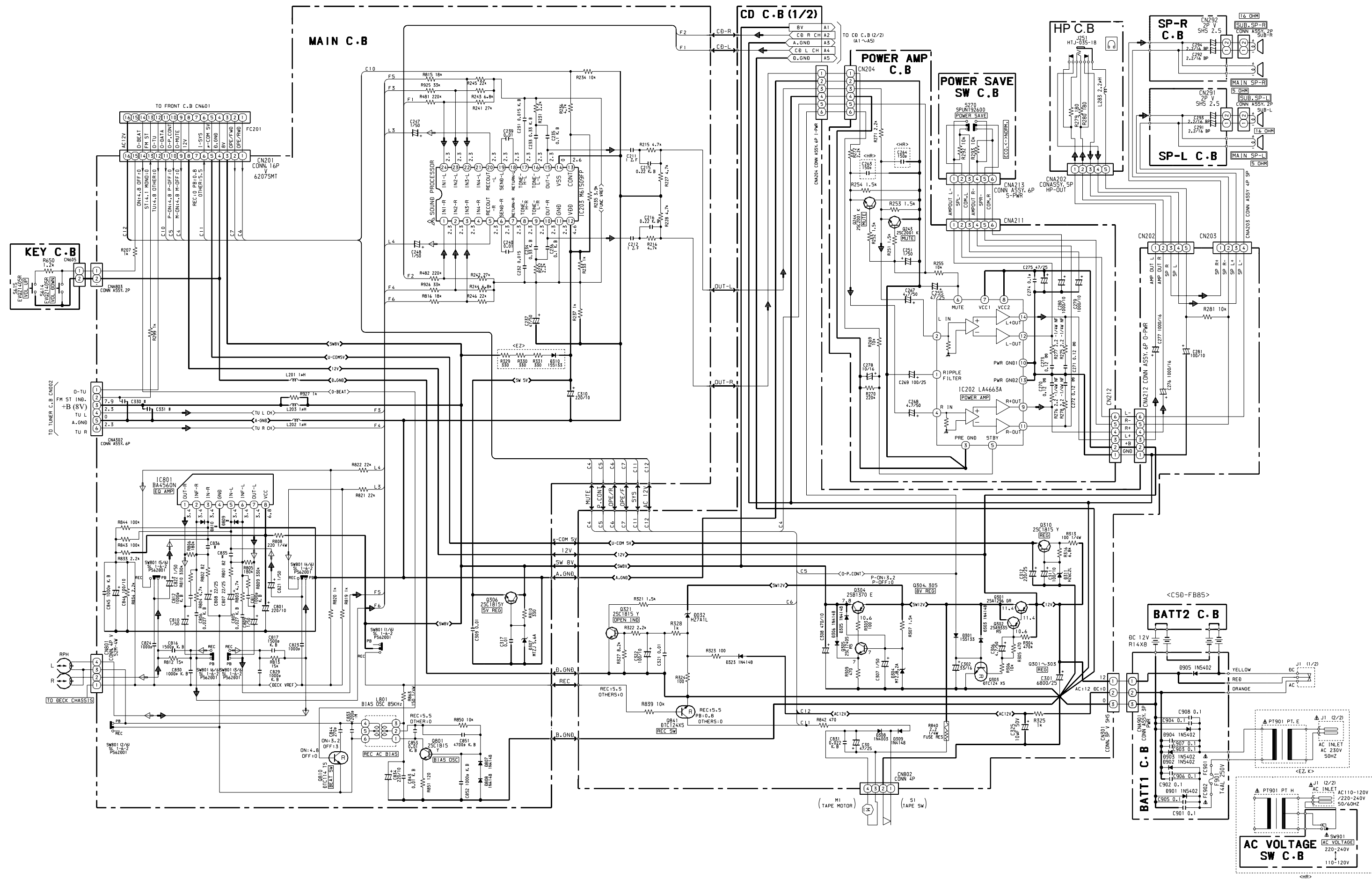
SCHEMATIC DIAGRAM - 1 (MAIN / CD : 1 / 2 <CSD-FD83>)

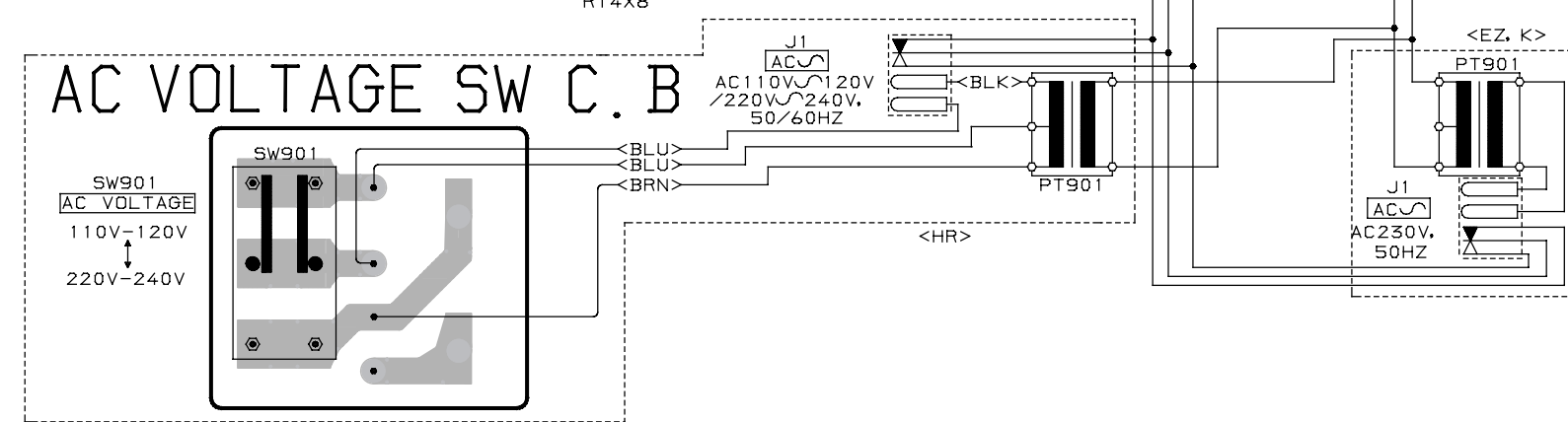
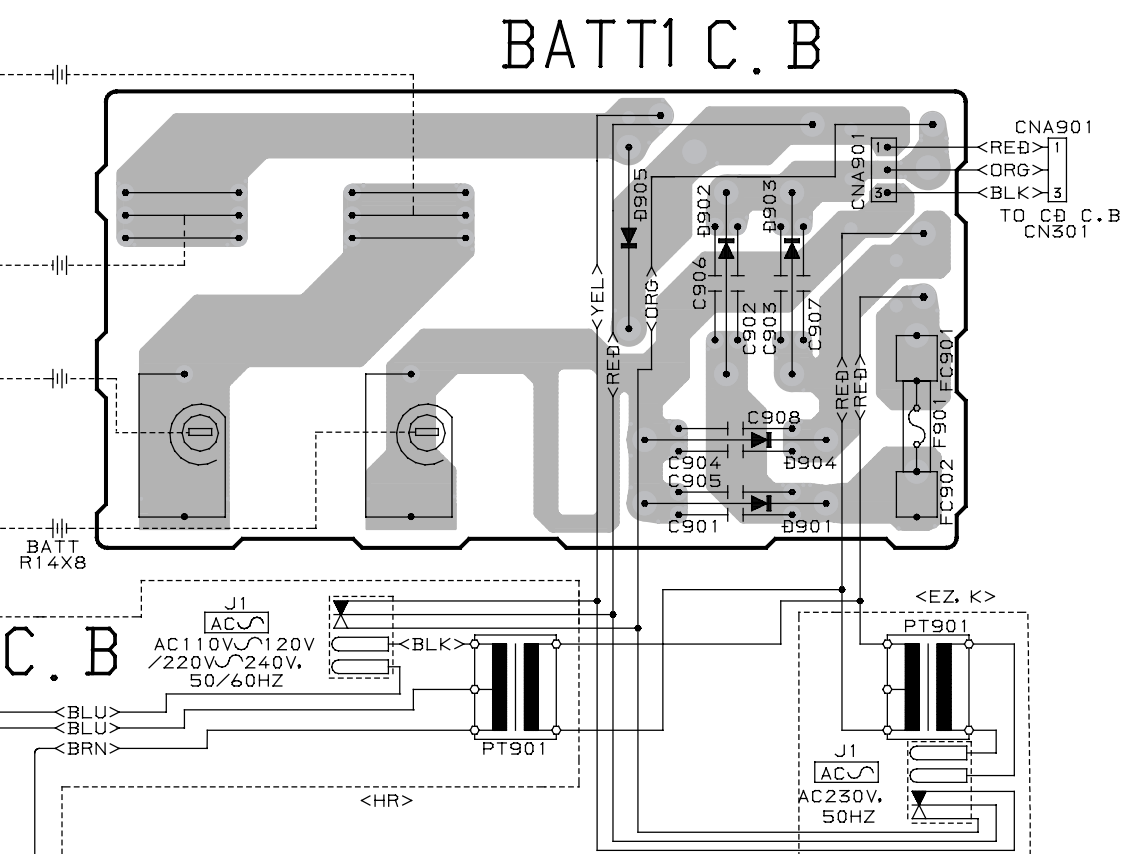
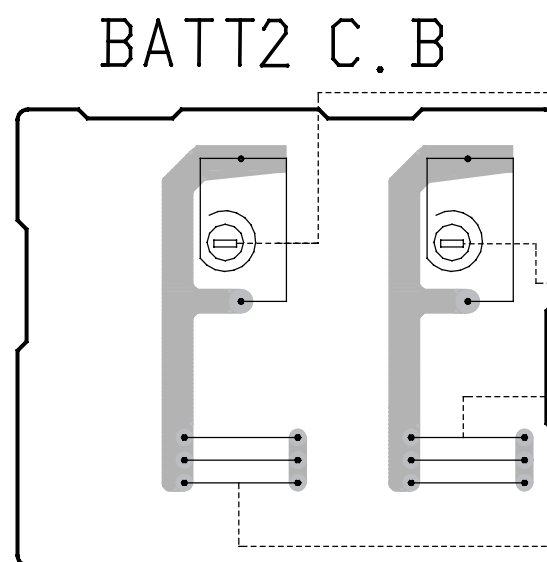
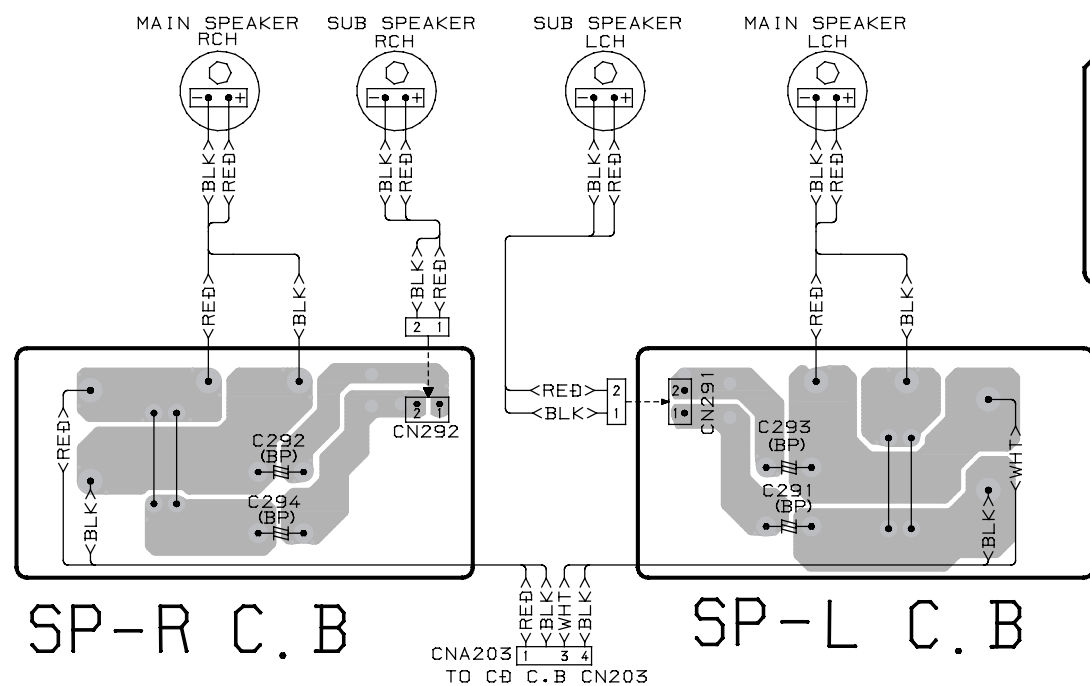






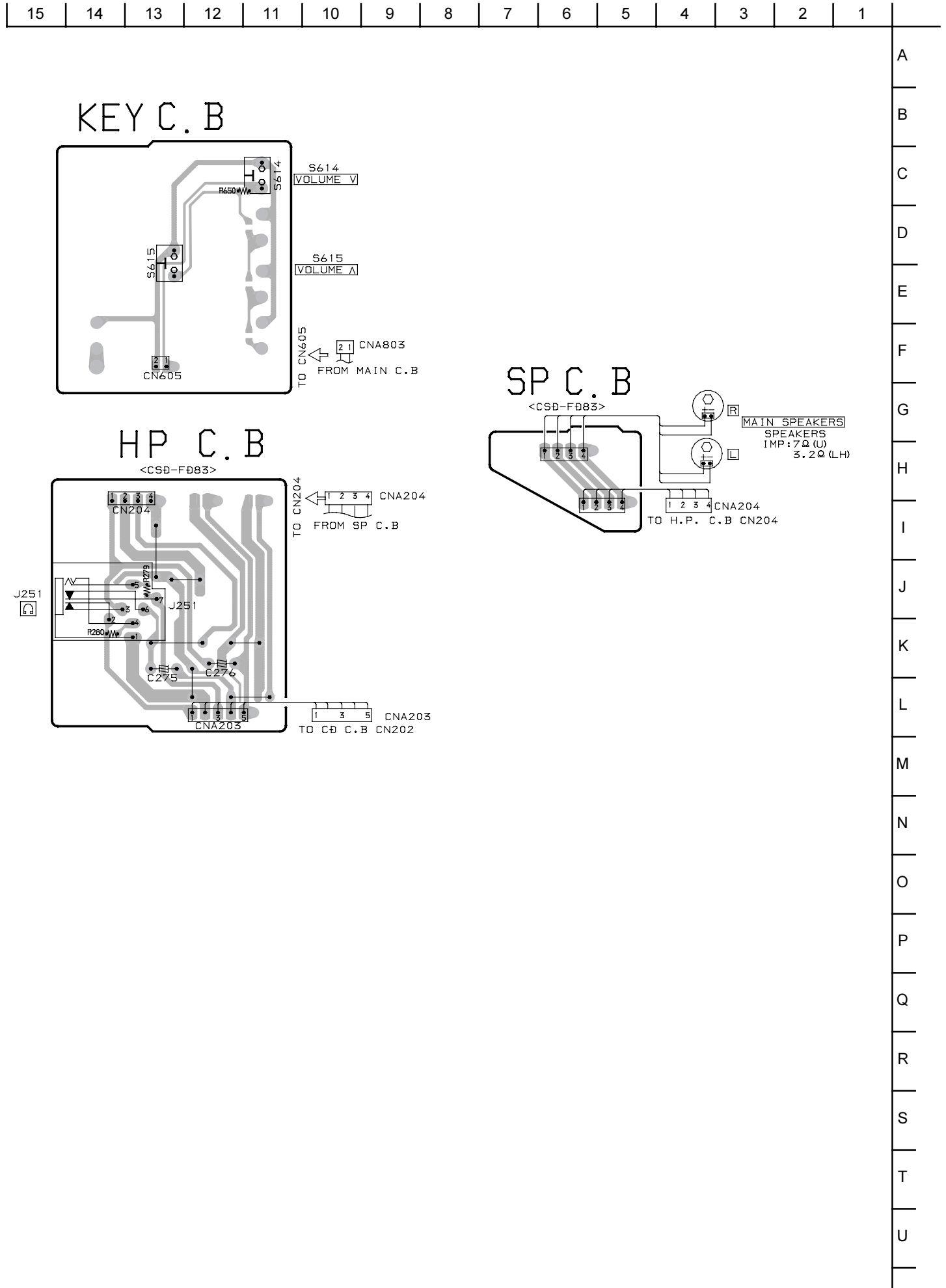
SCHEMATIC DIAGRAM – 2 (MAIN / CD : 1 / 2 <CSD-FD85>)



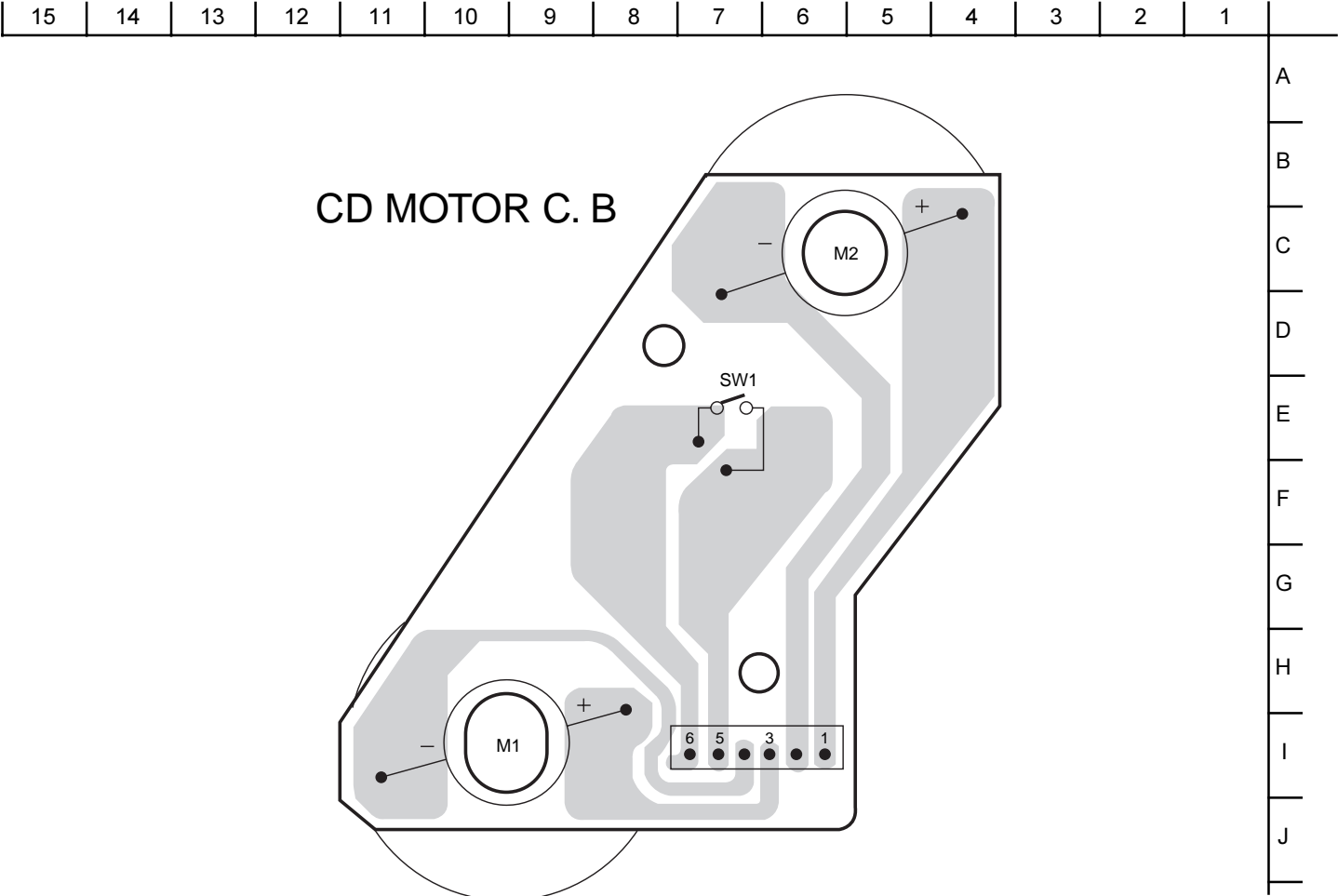




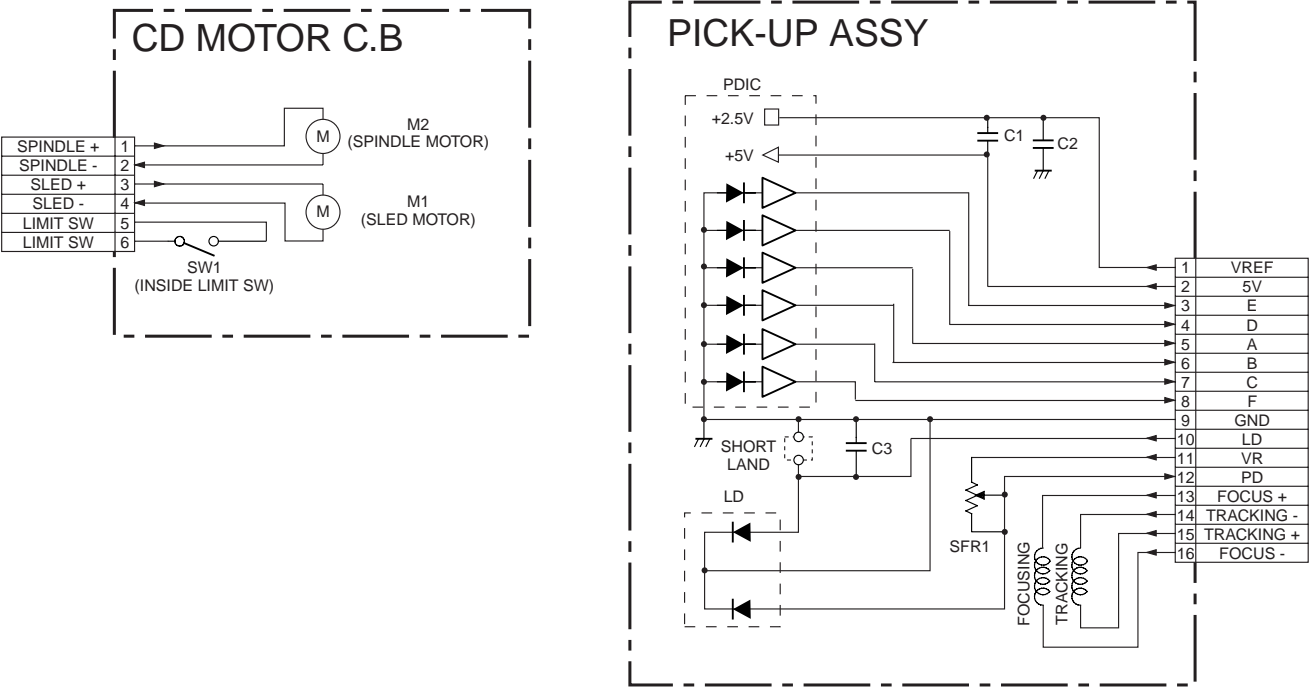
# WIRING-4 (KEY / HP / SP)

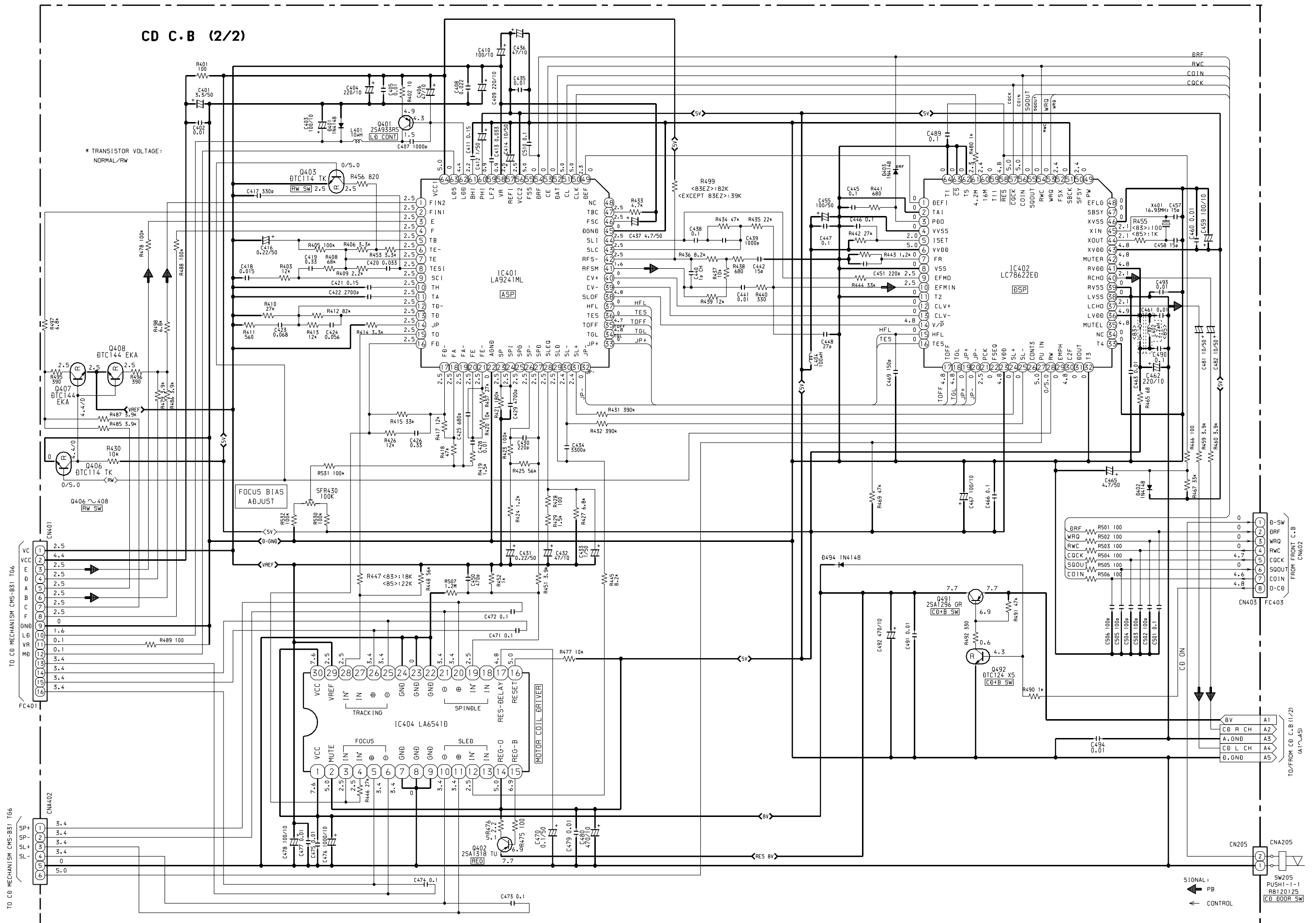


WIRING-5 (CD MOTOR)

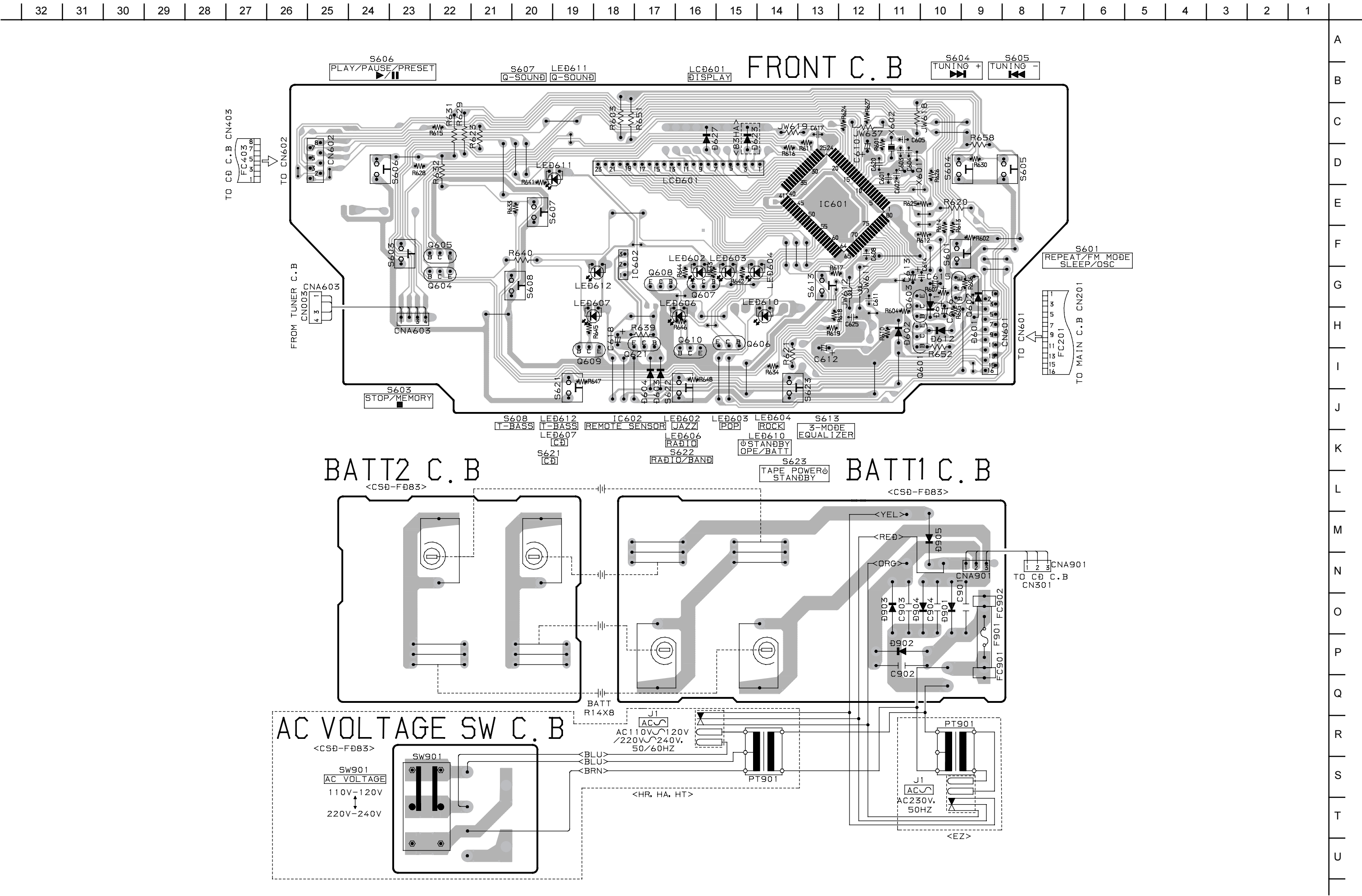


SCHEMATIC DIAGRAM – 3 (CD MOTOR)

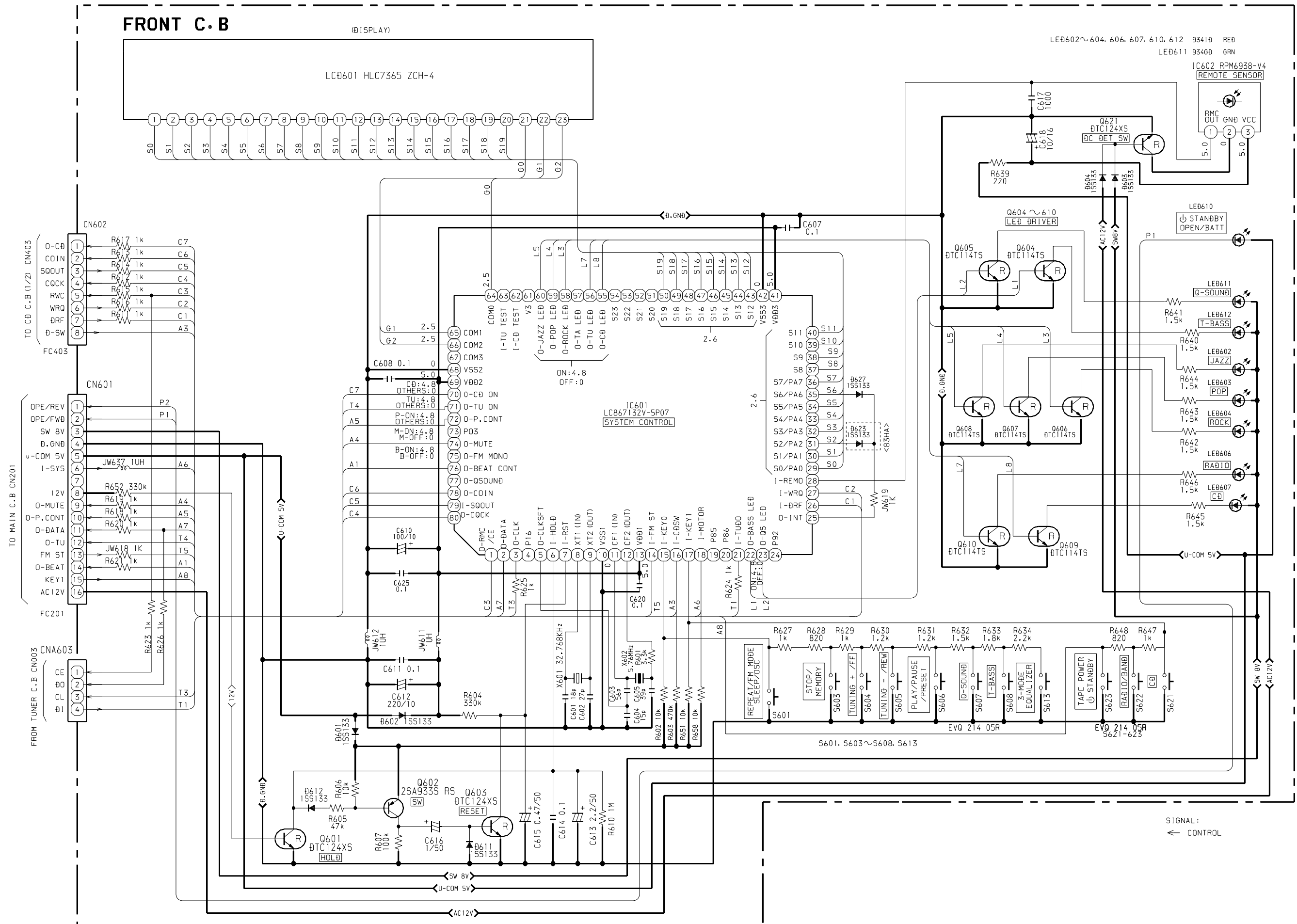


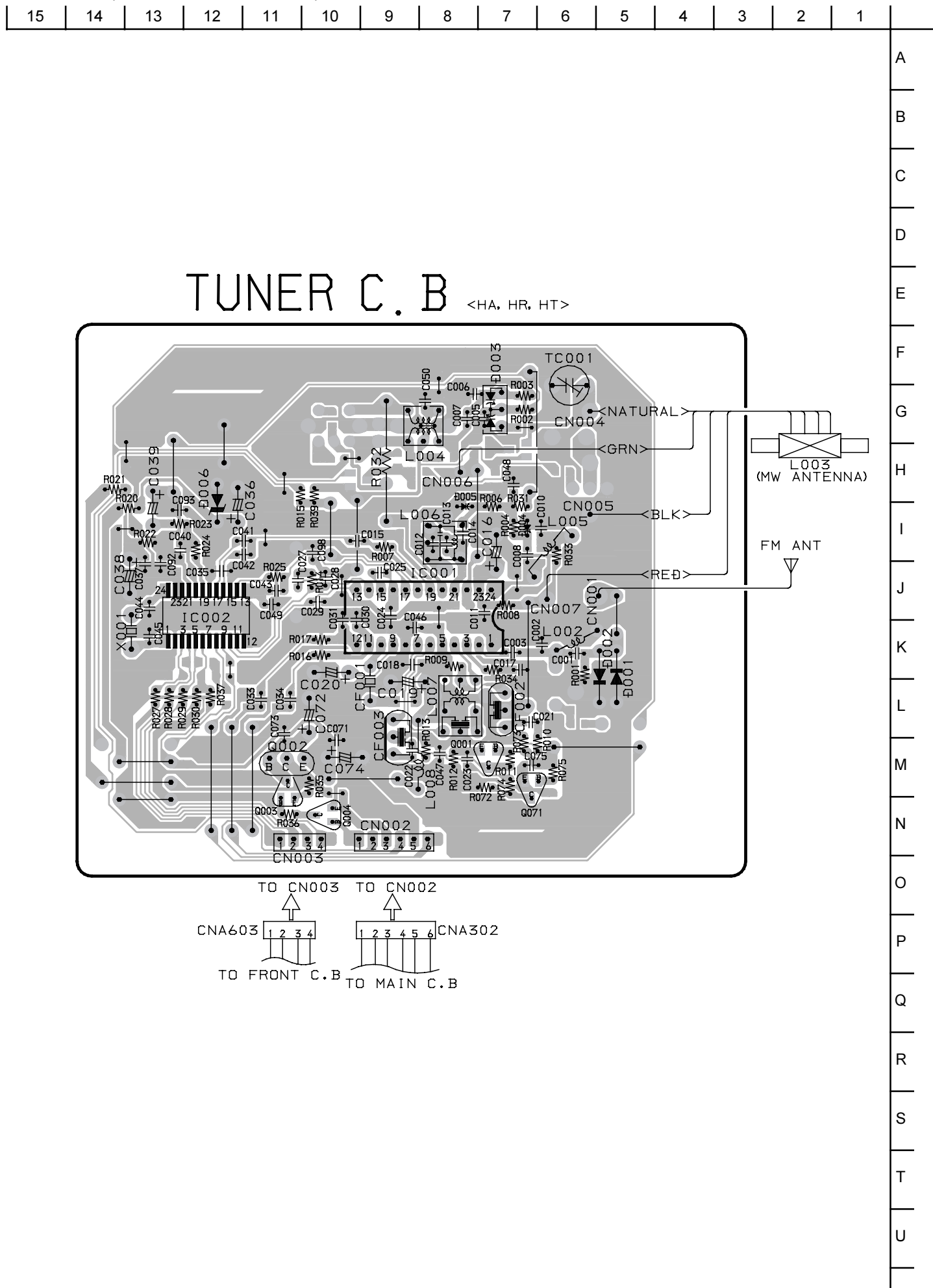


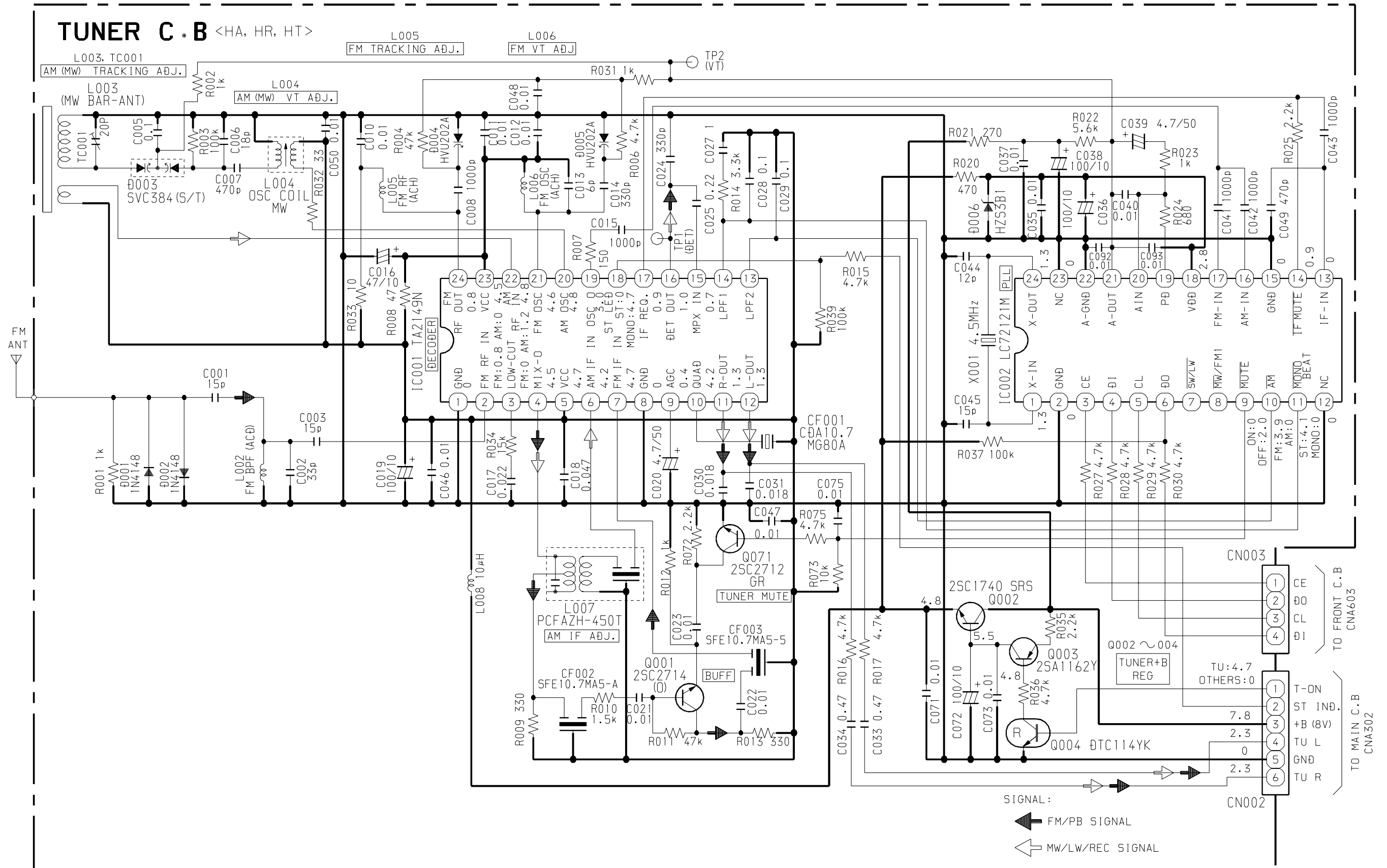
WIRING-6 (FRONT / BATT1 / BATT2 / AC VOLTAGE SW)



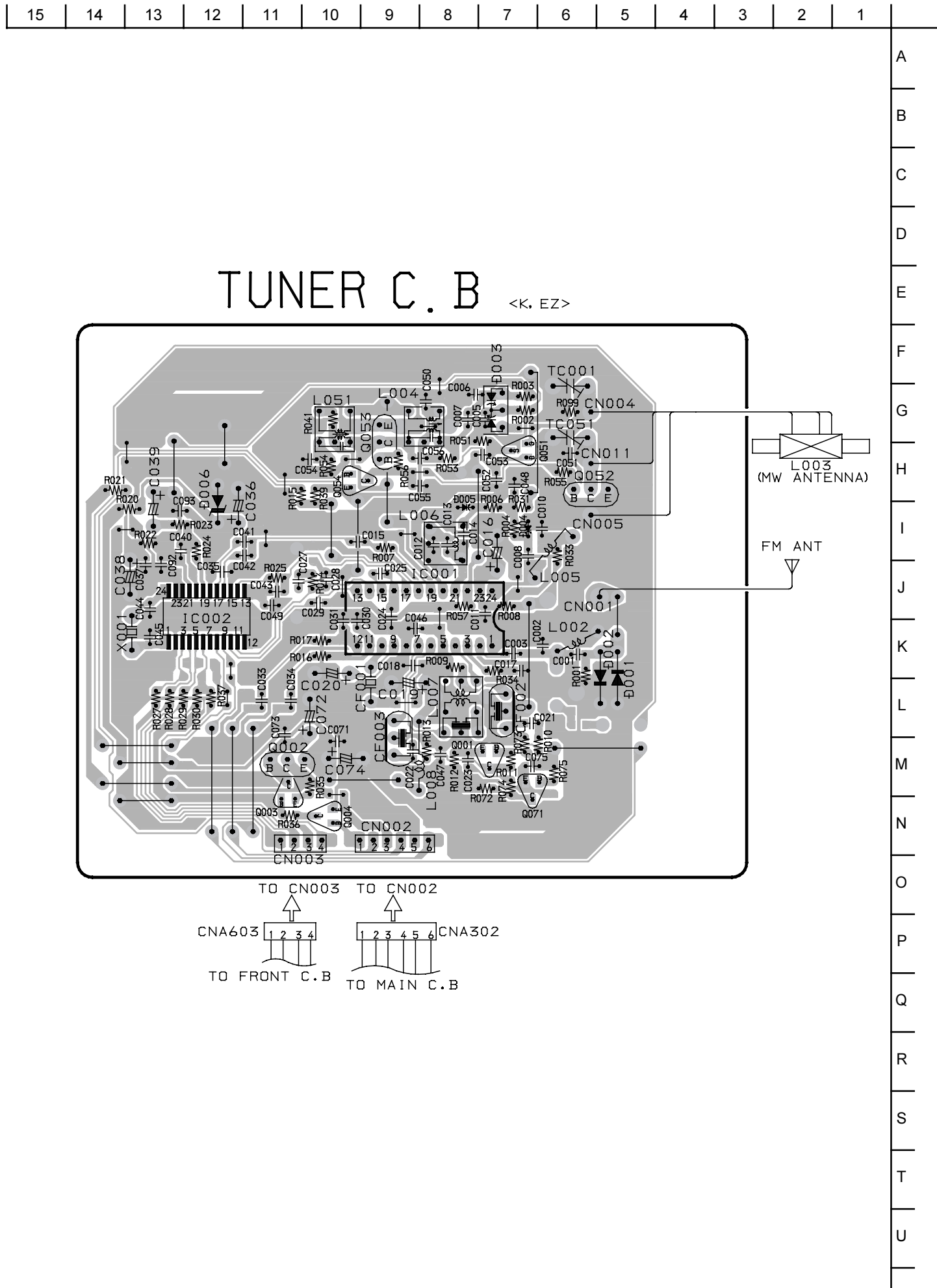
SCHEMATIC DIAGRAM – 5 (FRONT)



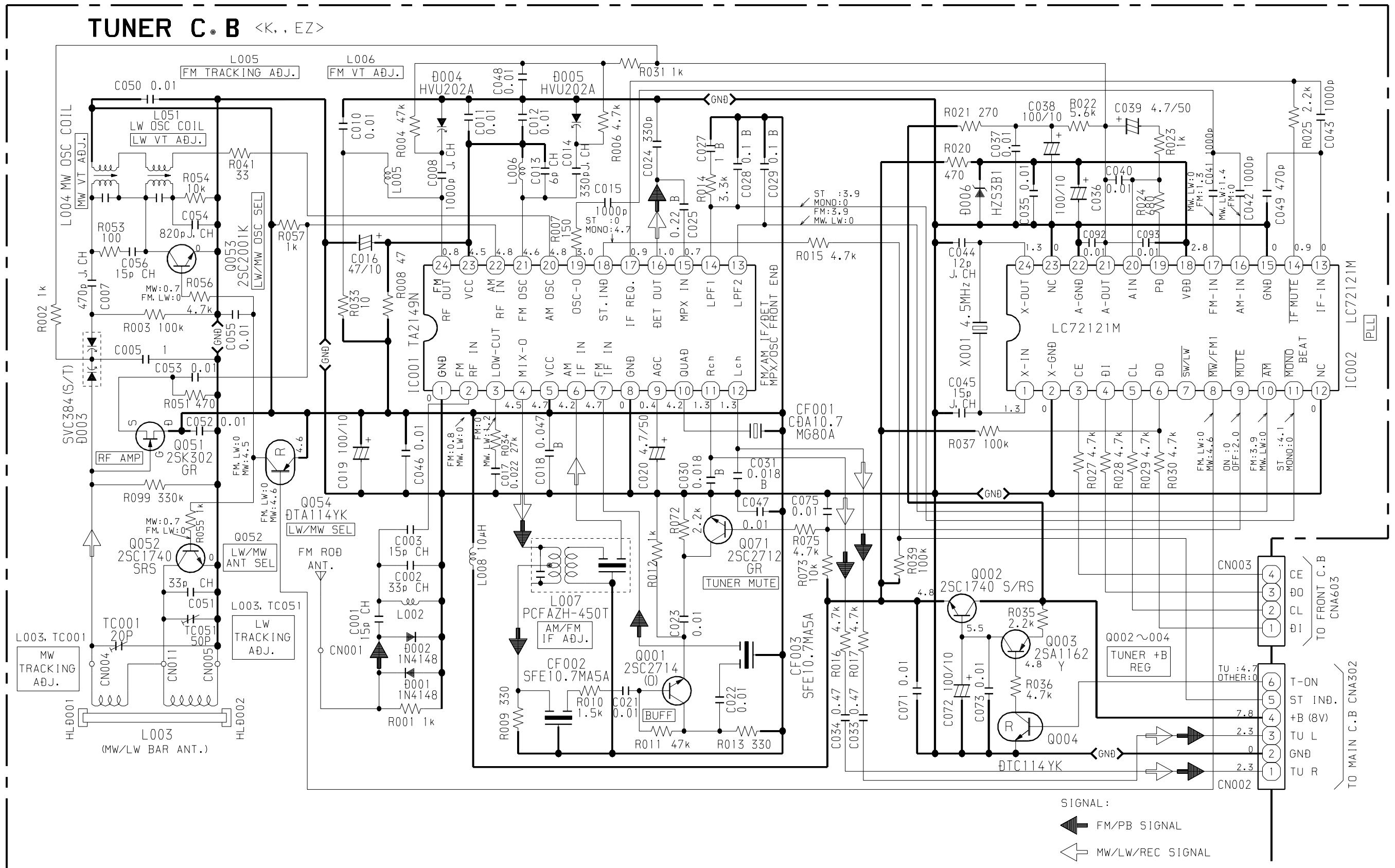


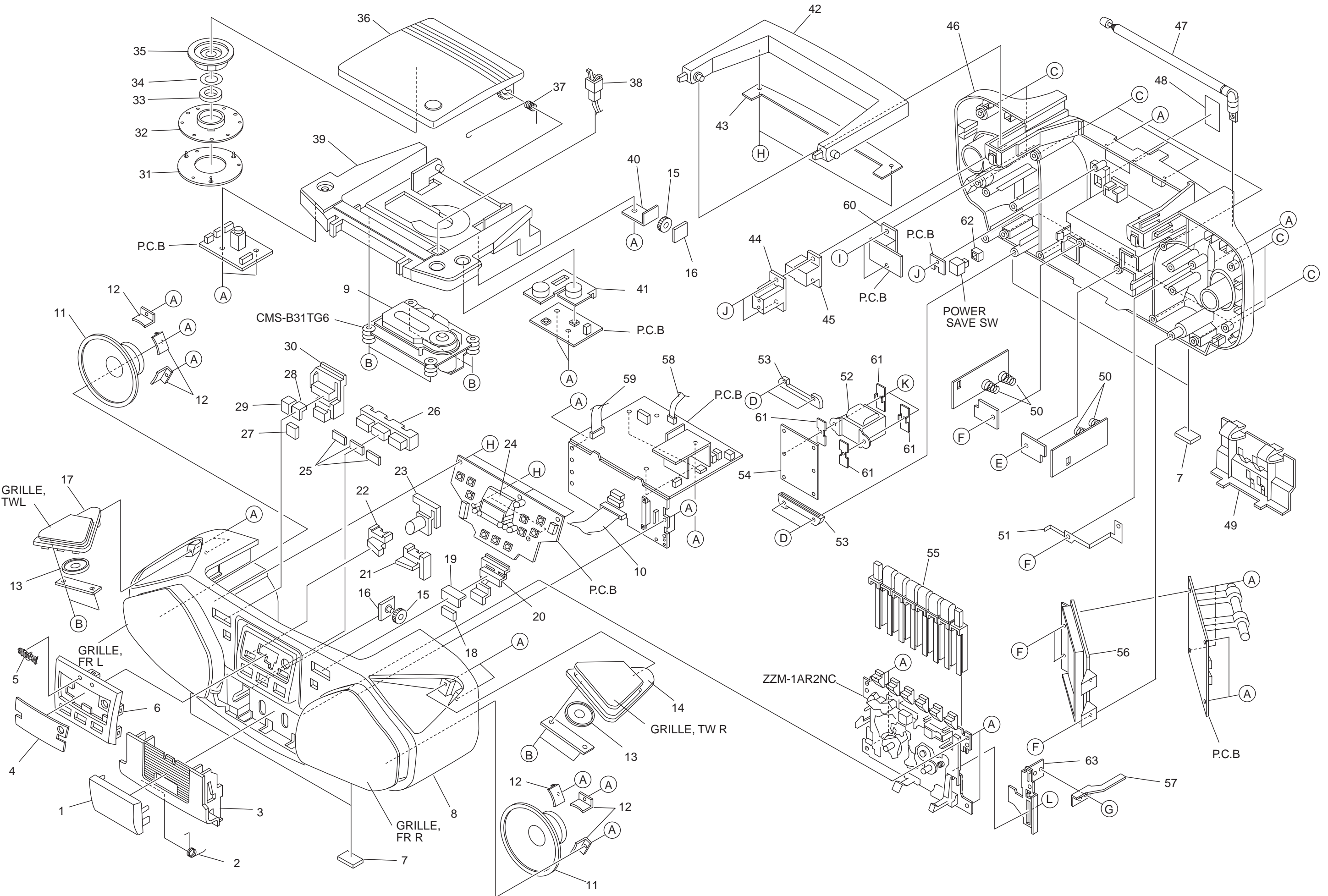


# WIRING-8 (TUNER : EZ, K)









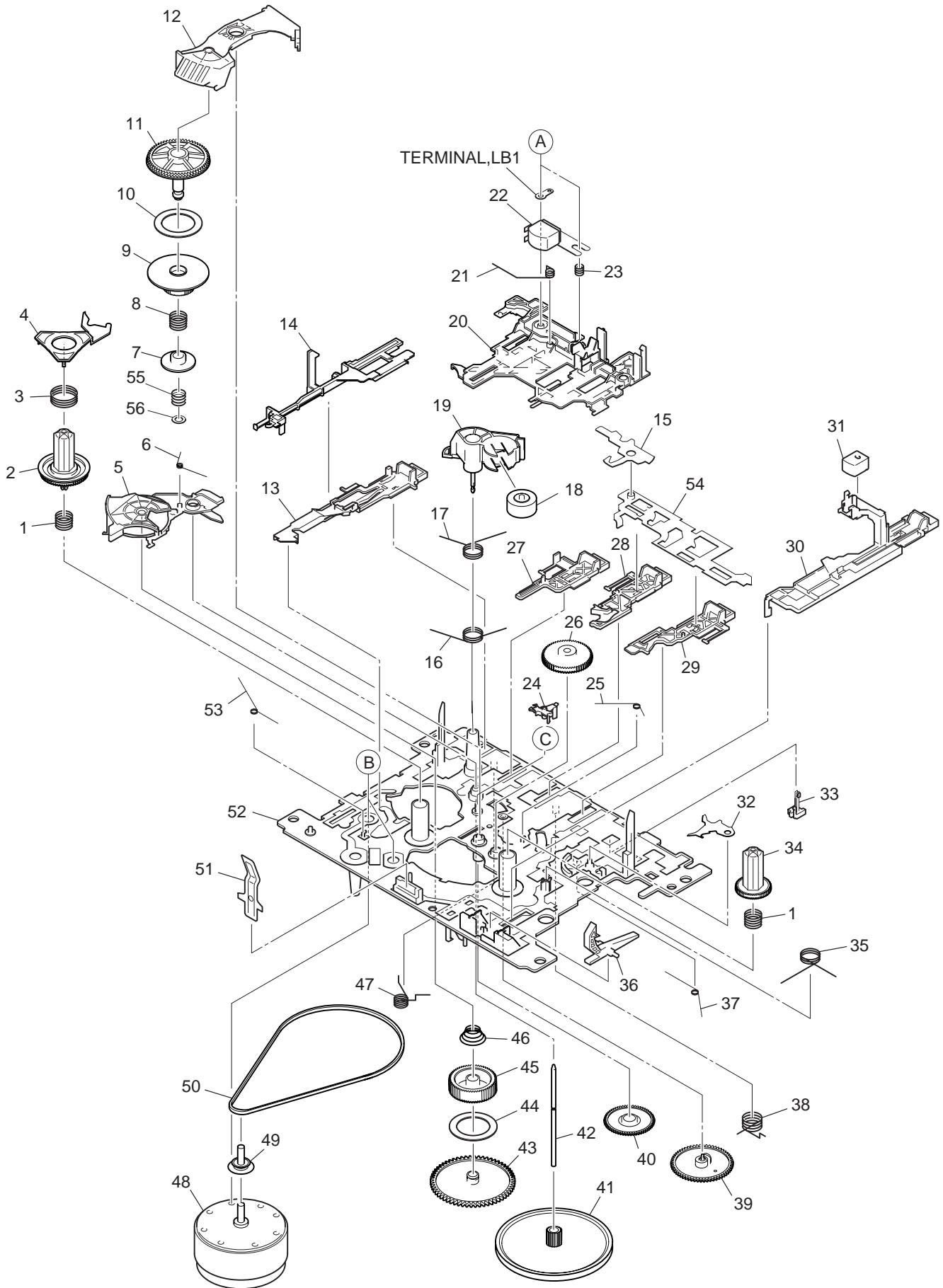
# MECHANICAL PARTS LIST 1 / 1

REF. NO.	PART NO.	KANRI NO.	DESCRIPTION	REF. NO.	PART NO.	KANRI NO.	DESCRIPTION
1	8A-CHE-008-010		WINDOW, CASS E	38	87-036-389-010		SW, PUSH LOCK
2	8A-CH4-205-010		SPR-T, CASS	39	8A-CHE-003-010		CHAS, CD 6K E
3	8A-CH4-007-010		BOX, CASS<EXCEPT 85HR, 85K, 85EZ>	40	8A-CH4-206-010		HLDR, OIL-DMPR
3	8A-CHE-007-010		BOX, CASS HI<85HR, 85K, 85EZ>	41	8A-CHE-026-010		BTN, VOL E
4	8A-CHE-010-010		WINDOW, LCD E	42	8A-CHE-018-010		HANDL, GRIP E
5	87-B00-010-010		BADGE, AIWA 30.5-5.2 S 2.5L	43	8A-CHE-019-010		COVER, HANDL E
6	8A-CHE-009-010		PANEL, LCD E	44	87-A90-086-010		COVER, AC-SOCKET
7	8Z-CH4-222-010		CUSHION, FOOT H5<85HR, 85K, 85EZ>	45	87-A60-178-010		JACK, AC E W/SW
7	86-CT4-218-010		CUSHION, FOOT<EXCEPT 85HR, 85K, 85 EZ>	46	8A-CH4-002-010		CABI, REAR<EXCEPT 85HR, 85K, 85EZ>
8	8A-CH4-101-010		CABI, FR ASSY<EXCEPT 85HR, 85K, 85EZ>	46	8A-CHE-002-010		CABI, REAR HI<85HR, 85K, 85EZ>
8	8A-CHE-101-010		CABI, FR HI ASSY<85HR, 85K, 85EZ>	47	8Z-CH4-640-010		ANT, ROD
9	88-CH6-019-010		PANEL, CD	48	87-CD6-041-010		PLATE, AC<85K, 83EZ, 85EZ>
10	8A-CD9-620-010		FF-CABLE, 16P FR-MAIN	49	8A-CH4-011-010		LID, BATT<EXCEPT 85HR, 85K, 85EZ>
11	8Z-CH4-665-010		SPKR, MYLR 8OHM (2.0W) <85HR, 85K, 85 EZNC>	49	8A-CHE-011-010		LID, BATT HI<85HR, 85K, 85EZ>
11	8Z-CH4-645-010		SPKR, MYLR 8OHM<EXCEPT 85HR, 85 K, 85EZ>	50	87-CD6-213-010		SPR-C, BATT (-)
12	8Z-CH4-204-010		HLDR, SPEAKER	51	8A-CH4-210-010		HLDR, ANT
13	8Z-CH4-664-010		SPKR, 10 6OHM<85HR, 85K, 85EZ>	52	8A-CH4-667-010		PT, E<83EZ>
13	8A-CH4-681-010		SPKR, 10-3.2OHM<EXCEPT 85HR, 85K, 85EZ>	52	8Z-CH4-663-010		PT, E (75-35) <85K, 85EZ>
14	8A-CH4-103-010		PANEL, TW R ASSY	52	8A-CH4-668-010		PT, H<83HR, 83HA, 83HT>
15	84-CD5-215-010		GEAR	52	8A-CHE-661-010		PT, H (75-35) <85HR>
16	84-CD5-216-010		BRACKET	53	8A-CH4-211-010		COVER, HLDR PT
17	8A-CH4-102-010		PANEL, TW L ASSY	54	8A-CH4-209-010		HLDR, PT<EXCEPT 85HR, 85K, 85EZ>
18	8A-CH4-030-010		CAP, STOP	54	8Z-CH4-209-010		HLDR, PT<85HR, 85K, 85EZ>
19	8A-CH4-029-010		CAP, PLAY	55	8A-CHE-020-010		KEY, CASS 6K E
20	8A-CH4-022-010		BTN, PLAY	56	8A-CH4-203-010		HLDR, TU
21	8A-CH4-027-010		BTN, BASS	57	8A-CH4-212-010		SPR-P, REC ZZM-1
22	8A-CH4-024-010		BTN, EQ	58	8A-CD9-622-010		FF-CABLE, 8P CD-FR
23	8A-CH4-028-010		BTN, SOUND	59	8A-CD9-621-010		FF-CABLE, 16P CD-RF
24	8A-CH4-201-010		HLDR, LCD	60	87-A91-369-010		SW, AC SL 2 2 2 <EXCEPT 85K, 83EZ, 85EZ>
25	8A-CH4-034-010		LENS, FUNC	61	8A-CHE-212-010		COVER, HLDR TRANS<85HR, 85K, 85EZ>
26	8A-CH4-025-010		BTN, FUNC	62	8Z-CH4-031-010		BTN, POWER-SAVE<85HR, 85K, 85EZ>
27	8A-CH4-033-010		CAP, REPEAT	63	8A-CD9-224-010		HLDR, REC ZZM-1
28	8A-CH4-032-010		CAP, REW	A	87-741-096-410		UT2+3-10
29	8A-CH4-031-010		CAP, FF	B	87-342-074-010		UT2+2.6-8
30	8A-CH4-023-010		BTN, SKIP	C	87-741-100-410		UT2+3-16(W/O) SLOT
31	8Z-CH4-212-010		RING, CHUCK	D	87-661-100-410		VFT1+3-16
32	8Z-CH4-211-010		BASE, CHUCK	E	87-067-566-010		TAPPING SCREW, VFTT+3-6
33	87-036-368-010		MAGNET	F	87-741-095-410		UT2+3-8 GLD
34	84-CD5-217-010		PLATE, MAGNET	G	87-751-094-410		VT2+3-6 W10SL0T
35	85-CD7-217-010		HLDR, CHUCK A	H	87-B10-239-010		QT2+3-8 W/O CR
36	8A-CHE-005-010		BOX, CD E<83EZ>	I	87-751-075-410		VT2+2.6-10
36	8A-CHE-131-010		BOX, CD EZ HI<85K, 85EZ>	J	87-744-095-410		UT2+3-8CR
36	8A-CHE-122-010		BOX, CD HE E<83HR, 83HA, 83HT>	K	87-254-097-410		U+3-12 CR
36	8A-CHE-132-010		BOX, CD HR HI<85HR>	L	8A-CDA-222-010		S-SCREW, CASS+2.6-4
37	8A-CH4-204-010		SPR-T, CD				

## COLOR NAME TABLE

Basic color symbol	Color	Basic color symbol	Color	Basic color symbol	Color
B	Black	C	Cream	D	Orange
G	Green	H	Gray	L	Blue
LT	Transparent Blue	N	Gold	P	Pink
R	Red	S	Silver	ST	Titan Silver
T	Brown	V	Violet	W	White
WT	Transparent White	Y	Yellow	YT	Transparent Yellow
LM	Metallic Blue	LL	Light Blue	GT	Transparent Green
LD	Dark Blue	DT	Transparent Orange	GM	Metallic Green
YM	Metallic Yellow	DM	Metallic Orange		

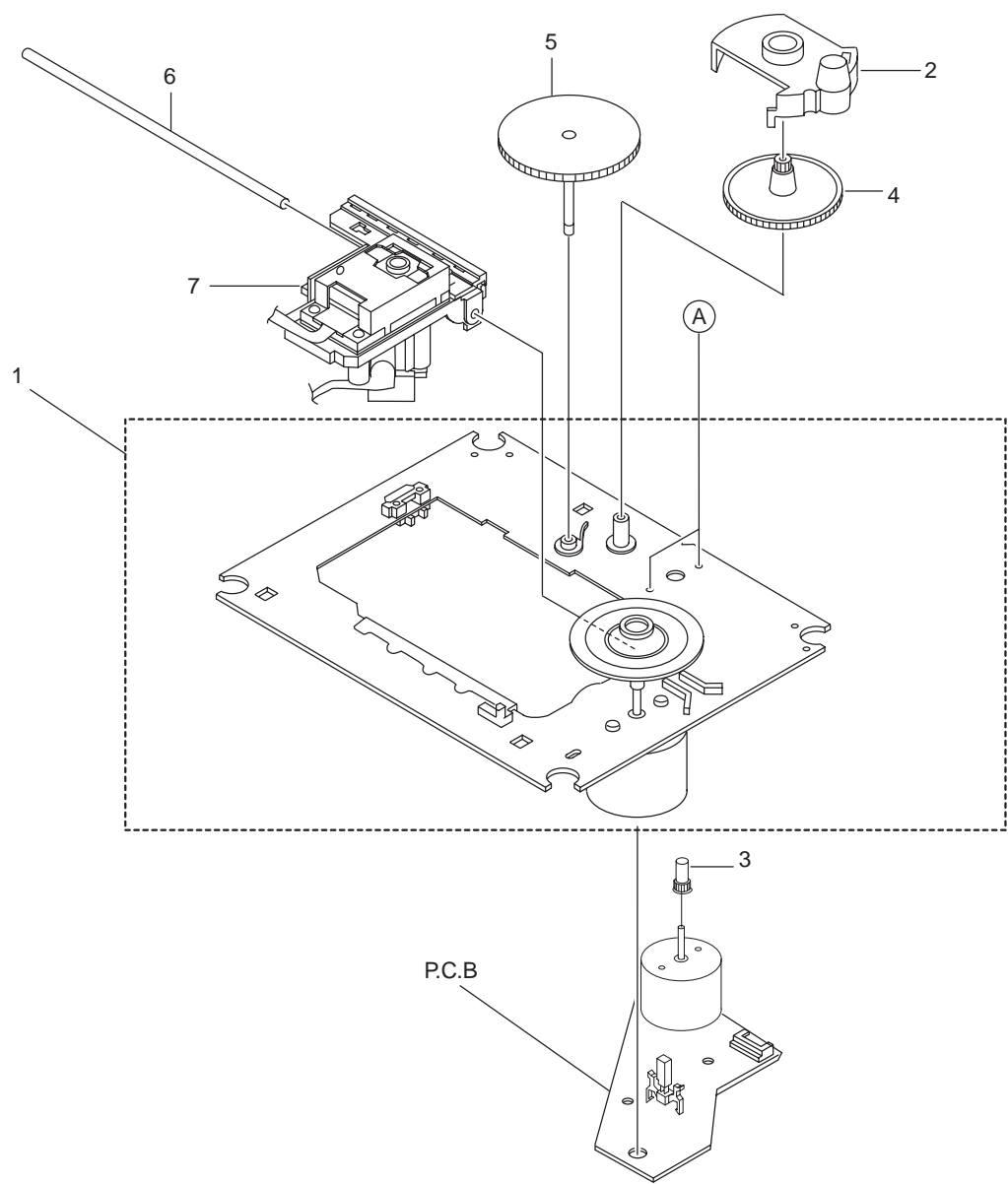
# TAPE MECHANISM EXPLODED VIEW 1 / 1



# TAPE MECHANISM PARTS LIST 1 / 1

REF. NO.	PART NO.	KANRI NO.	DESCRIPTION	REF. NO.	PART NO.	KANRI NO.	DESCRIPTION
1	8Z-ZM1-254-310		SPR-C, REEL R	31	87-A91-819-010		HEAD, EH 2NSS-2200
2	8Z-ZM1-225-110		GEAR, REEL R	32	8Z-ZM1-215-010		LEVER, REC LOCK
3	8Z-ZM1-253-210		SPR-C, AUTO SENSOR	33	87-A91-492-010		SW, LEAF MSW18560
4	8Z-ZM1-217-110		LEVER, AUTO SENSOR	34	8Z-ZM1-226-010		GEAR, REEL L
5	8Z-ZM1-212-110		LEVER, T-UP	35	8Z-ZM1-241-210		SPR-T, PLAY
6	8Z-ZM1-245-310		SPR-T, AUTO	36	8Z-ZM1-220-110		LEVER, REC SENSOR
7	8Z-ZM1-236-010		CLR, SLIP FF/REW	37	8Z-ZM1-249-210		SPR-T, FR
8	8Z-ZM1-252-110		SPR-C, FF/REW	38	8Z-ZM1-242-310		SPR-T, FF/REW
9	8Z-ZM1-230-010		GEAR, SLIP FF/REW A	39	8Z-ZM3-244-010		GEAR, CAM TD20
10	8Z-ZM1-269-010		FELT, FF/REW 2	40	8Z-ZM1-232-010		GEAR, IDL FF/REW
11	8Z-ZM1-238-110		GEAR, SLIP FF/REW B 2	41	8Z-ZM3-228-110		FLY-WHL, M3
12	8Z-ZM1-237-110		LEVER, FF/REW 2	42	8Z-ZM1-267-110		SHAFT, CAPSTAN 2
13	8Z-ZM1-283-010		LEVER, PAUSE 2	43	8Z-ZM1-228-010		GEAR, SLIP T-UP B
14	8Z-ZM1-222-010		LEVER, E-LOCK M	44	8Z-ZM1-265-010		FELT, T-UP
15	8Z-ZM1-219-010		LEVER, E-OPEN	45	8Z-ZM1-227-010		GEAR, SLIP T-UP A
16	8Z-ZM1-244-110		SPR-T, T-UP	46	8Z-ZM1-251-210		SPR-C, T-UP SLIP
17	8Z-ZM1-247-310		SPR-T, PINCH	47	8Z-ZM1-243-310		SPR-T, STOP/PAUSE
18	8Z-ZM1-261-110		ROLLER ASSY, PINCH	48	87-A91-825-010		MOT, M09Y/Z
19	8Z-ZM1-221-210		LEVER, PINCH	49	8Z-ZM1-271-010		PULLEY, MOT ZZM-1
20	8Z-ZM1-205-310		LEVER, PLAY	50	8Z-ZM1-264-010		BELT, MAIN S
21	8Z-ZM1-248-210		SPR-T, BRG	51	8Z-ZM1-260-010		SPR-P, CASSETTE
22	87-A91-830-010		HEAD, RP-7442	52	8Z-ZM1-201-610		CHAS ASSY, ZZM-1
23	84-ZM2-227-310		SPR-C, AZIMUTH	53	8Z-ZM1-255-310		SPR-T, E-LOCK
24	8Z-ZM1-216-110		LEVER, AUTO	54	8Z-ZM1-214-210		LEVER, LOCK
25	8Z-ZM1-246-110		SPR-T, AUTO 2	55	8Z-ZM1-257-110		SPR-C, F/R
26	8Z-ZM1-233-110		GEAR, IDL REW	56	8Z-ZM1-275-010		W-L, 1.47-4-0.25
27	8Z-ZM1-208-010		LEVER, STOP	A	84-ZM2-242-010		S-SCREW, AZ1-2-6.4
28	8Z-ZM1-207-010		LEVER, FF	B	8Z-ZM1-270-110		V+2.6 ZZM-1
29	8Z-ZM1-206-010		LEVER, REW	C	87-B10-301-010		W-L, 1.63-3.2-0.5 SLIT
30	8Z-ZM1-211-210		LEVER, REC 2				

CD MECHANISM EXPLODED VIEW 1 / 1



CD MECHANISM PARTS LIST 1 / 1

REF. NO.	PART NO.	KANRI NO.	DESCRIPTION
1	M8-ZZK-L90-070	CMS-B31TG6	
2	SJ-660-060-1G0	COVER GEAR	
3	SJ-660-060-1D0	GEAR(A)	
4	SJ-660-060-1B0	GEAR(B)	
5	SJ-660-060-1F0	GEAR(C)	
6	SJ-700-060-1A0	SHAFT UP	
7	SJ-750-060-1F0	PICKUP ASSY	
A	SJ-600-060-100	SCREW-PH (+M2+3)	

アイワ株式会社 〒110-8710 東京都台東区池之端1-2-11 ☎03(3827)3111 (代表)  
**AIWA CO.,LTD.** 2-11, IKENOHATA 1-CHOME, TAITO-KU, TOKYO 110, JAPAN TEL:03 (3827) 3111