

DAEWOO

# Service Manual

## Washing Machine

Model: DW-X700C / DW-X710C

### ✓ Caution

: In this Manual, some parts can be changed for improving, their performance without notice in the parts list. So, if you need the latest parts information, please refer to PPL(Parts Price List) in Service Information Center (<http://svc.dwe.co.kr>).

**DAEWOO ELECTRONICS CORP.**

[http : //svc.dwe.co.kr](http://svc.dwe.co.kr)

Nov. 2006



# Contents

WASHING MACHINE

- 1. SPECIFICATIONS
- 2. EXTERNAL VIEW
- 3. TROUBLESHOOTING GUIDE
- 4. EXPLODED VIEW AND PARTS LIST
- 5. WIRING DIAGRAM

# 1. SPECIFICATIONS

NO.	ITEM		SPECIFICATION	
1	POWER SOURCE	VOLTAGE	AC 110V	AC 220V
		FREQUENCY	60Hz	50Hz
2	RATED INPUT POWER	WASH	350	330
		SPIN	175	160
3	DIMENSION		NET : 758 X 445 X 905 (mm, WXD <sub>X</sub> H)	
4	MACHINE WEIGHT	PUMP	-	
		NON PUMP	NET: 27kg	
5	WASHING COURSE		STRONG, NORMAL	
6	WATER LEVEL		LOW (35ℓ), MID (42ℓ), HIGH (49ℓ)	
7	TIMER	WASH	MAX. 15 min, MANUAL OPERATION	
		SPIN	MAX. 5 min, MANUAL OPERATION	
9	WASHER TYPE		PULSATOR TYPE	
10	WATER SUPPLY		MANUAL	



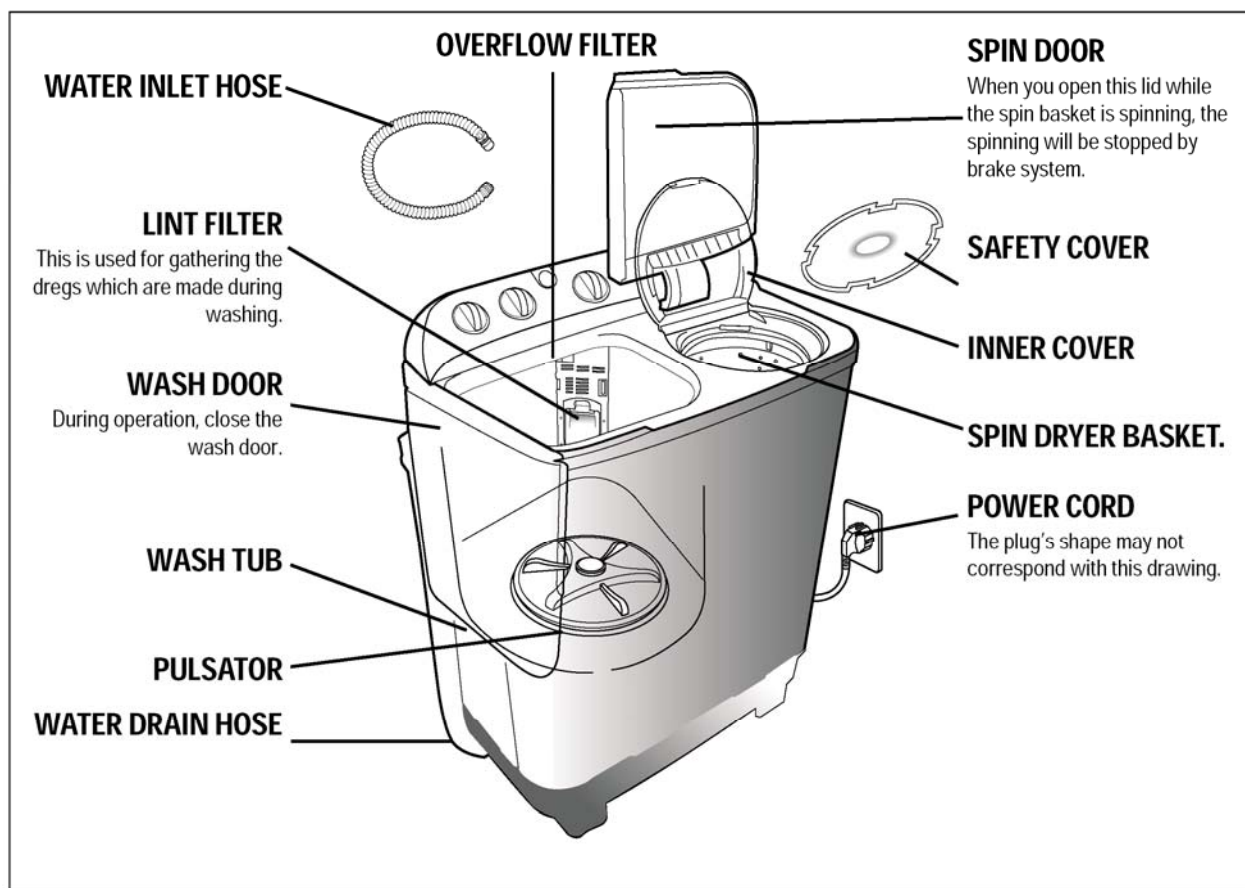
**DW-X700C**



**DW-X710C**

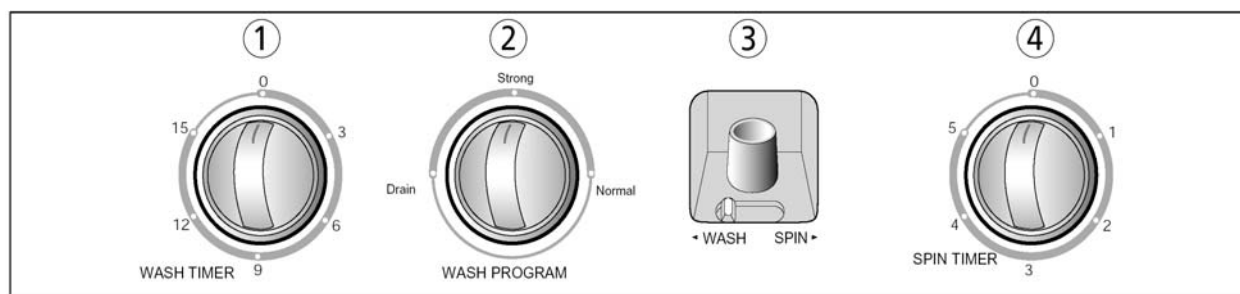
## 2. EXTERNAL VIEW

### DESCRIPTION OF PARTS



### CONTROL PANEL

- ① **WASH TIMER**  
Use to select the desired time for washing or rinsing.
- ② **VALVE SELECTOR**  
Select "WASH • RINSE" for washing and rinsing, and "DRAIN" to drain the water
- ③ **WATER INLET & WATER GUIDE KNOB**  
Insert the water inlet hose to the water inlet feed to water into the wash tub (WASH selected) or the spin tub (SPIN selected).
- ④ **SPIN TIMER**  
Use to select the desired time for spinning.



# 3. TROUBLESHOOTING GUIDE



## NOTES

Pull out the power plug to repair and make sure that the Washing Machine has been properly grounded.



## Symptom & Remedy

SYMPTOM	REASON	REMEDY
The effect of clothes tumbling is not well, and the speed of pulsator is too slow.	1.Loose drive belt. 2.Overweight wash clothes. 3.Low voltage.	1.Tighten or replace drive belt. 2.Lessen wash clothes. 3.Wash till voltage is normal.
Pulsator, spin tub will not run,and motor is no voice.	1.Without electricity (fuse blown). 2.Power cord plug doesn't touch well with receptacle. 3.Without revolving timer. 4.Power cord disconnected. 5.Conducted wire adapter loosen. 6.Damaged timer. 7.Damaged condenser. 8.Damaged motor. 9.Switcher of spin tub doesn't touch well.	1.Check electric power. 2.Check receptacle. 3.Revolve knob of timer. 4.Replace power cord. 5.Check conducted wire adapter in wire covering, and reconnect. 6.Replace timer. 7.Replace condenser. 8.Replace motor. 9.Adjust or replace switcher.
Pulsator will not run, but wash motor has vibration.	1.Abnormal things wedged under pulsator. 2.Damaged condenser or disconnected wire. 3.Loose drive belt. 4.Damaged pulley. 5.Damaged speed condenser. 6.Damaged wash motor.	1.Sweep abnormal things. 2.Replace condenser or reconnect wire. 3.Tighten or replace drive belt. 4.Replace pulley. 5.Replace speed condenser. 6.Replace wash motor.
Spin tub will not run, but spin motor has vibration.	1.Abnormal things wind upon rotating shaft of spin tub. 2.Rotating shaft of spin tub wedaged with wearing seal bellow. 3.Brake mechanism is always in the state of brake. 4.Damaged condenser or disconnect wire. 5.Damaged spin motor.	1.Sweep things. 2.Replace seal bellow. 3.Adjust brake. 4.Replace condenser or reconnect wire. 5.Replace spin motor.

<b>SYMPTOM</b>	<b>REASON</b>	<b>REMEDY</b>
Abnormal noise from wash tub part.	1.Loose pulsator. 2.Abnormal things exist under pulsator. 3.Pulsator against wash tub. 4.Damaged speed condenser. 5.Drive belt against pulley. 6.Damaged wash motor.	1.Tighten pulsator. 2.Sweep abnormal things. 3.Adjust distance or replace pulsator. 4.Replace speed condenser. 5.Adjust the height of pulley. 6.Replace wash motor.
Abnormal noise from spin tub part.	1.Clothes in spin tub imbalance . 2.Abnormal things wind upon rotating shaft of spin tub. 3.Bearing with oil of seal bellow doesn't lubricate well.	1.Put clothes of spin tub balance. 2.Sweep abnormal things. 3.Append lubrication or replace seal bellow.
Pulsator will not run clockwise or counterclockwise.	1.Damaged wash timer. 2.Damaged selector.	1.Replace wash timer. 2.Replace selector.
Water will not drain or drain well.	1.Drain valve is stemed by abnormal things. 2.Unbolted height of drain valve is too low. 3.Drain slot of drain hose is too high.	1.Sweep abnormal things. 2.Adjust unbolted height of drain valve. 3.Fall down drain slot height of drain hose
Water leaks.	1.Loose screw securing speed condenser. 2.Seal on speed condenser damaged. 3.Loose soft hose connections or damaged soft hose. 4.Damaged seal bellow. 5.Loose seal on drain valve.	1.Fixed speed condenser. 2.Replace seal on speed condenser. 3.Hose connections reconnect or replace soft hose. 4.Replace seal bellow. 5.Adjust unbolted height of drain valve or sweep abnormal things or replace drain valve.
Drain pump will not work when washing.	1.Closed drain valve. 2.Abnormal things exist in drain pump. 3.Damaged drain pump button. 4.Damaged drain pump.	1.Open drain valve. 2.Sweep abnormal things. 3.Replace drain pump button. 4.Replace drain pump.
Drain pump will not work when spinning.	1.Damaged spin timer. 2.Abnormal things exist in drain pump. 3.Damaged drain pump.	1.Replace spin timer. 2.Sweep abnormal things. 3.Replace drain pump.

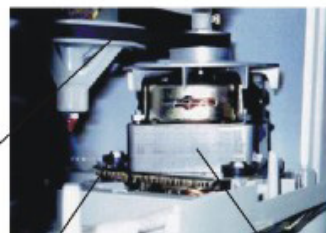


## Maintenance

### To adjust drive belt tension (see Figure 1)

1. Disconnect washing machine from electrical supply.
2. Open washing machine rear cover.
3. Loosen screw securing wash motor.
4. Move motor to optimal location.
5. Reverse procedure to reassemble.

Drive belt



Screw securing

Wash motor

Figure 1

### To replace drive belt (see Figure 1)

1. Disconnect washing machine from electrical supply.
2. Open washing machine rear cover.
3. Remove old drive belt.
4. Install new drive belt.
5. Adjust drive belt tension.

### To replace power cord (see Figure 2)

1. Disconnect washing machine from electrical supply.
2. Open washing machine rear cover.
3. Loosen conducted wire adapter.
4. Rotate power cord wedged edge to 90°.
5. Remove power cord from the cabinet(or base)
6. Replace power cord.
7. Reverse procedure to reassemble.

Cabinet

Power cord



Figure 2

### To replace wash/spin timer (see Figure 3)

1. Disconnect washing machine from electrical supply.
2. Open washing machine rear cover.
3. Loosen conducted wire adapter.
5. Remove knob of timer.
6. Remove screws securing control panel (control panel rear cover) with wash and spin tub.
7. Remove screws securing timer, then remove timer.
8. Replace timer. (install new timer)
9. Reverse procedure to reassemble.

Selector(rotating)

Spin timer



Control panel

Wash timer

### To replace selector (see Figure 3)

1. Disconnect washing machine from electrical supply.
2. Remove knob of selector.
3. Remove screws securing control panel (control panel rear cover) with wash and spin tub.
4. Loosen connect wire adapter.
5. Remove screws securing selector, then remove selector.
6. Install new selector.
7. Reverse procedure to reassemble.



Selector(button)

Figure 3

**To replace condenser** (see Figure 4)

1. Disconnect washing machine from electrical supply.
2. Open washing machine rear cover.
3. Loosen conducted wire adapter.
4. Remove condenser (or open condenser shelf).
5. Reverse procedure to reassemble.

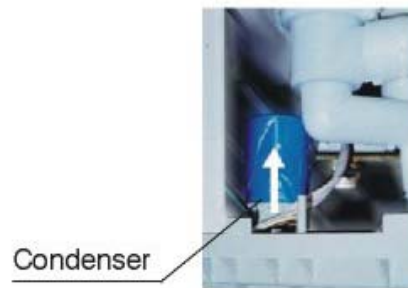


Figure 4

**To replace speed reducer** (see Figure 5 ,Figure 6)

1. Disconnect washing machine from electrical supply.
2. Remove screws securing pulsator, and remove pulsator.
3. Open washing machine rear cover , remove drive belt, and loosen screws securing spin tub.
4. Place a safety pad on the ground.
5. Return washing machine to upright position.
6. Remove screws securing base and drain hose , make base completely remove from cabinet.
7. Remove six screws securing wash and spin tub, and remove speed reducer.
8. Reverse procedure to reassemble.

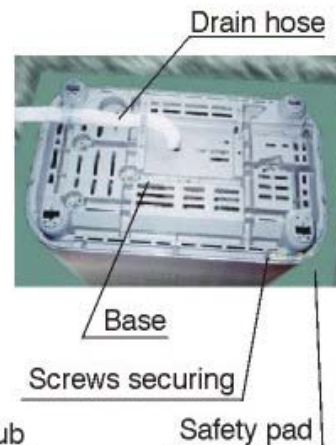


Figure 5

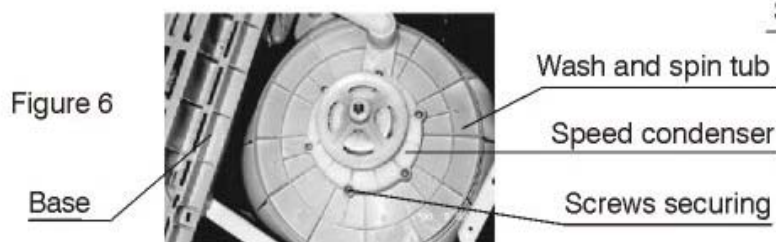


Figure 6

**To replace wash motor** (see Figure 5,7,8)

1. Disconnect washing machine from electrical supply.
2. Open washing machine rear cover, then remove drive belt.
3. Loosen 3 conducted wire adapter of wash motor.
4. Loosen screws securing spin tub.
5. Place a safety pad on the ground.
6. Return washing machine to upright position.
7. Remove screws securing base and drain hose, and make base completely remove from cabinet.
8. Remove power cord from conducted wire fixed location .
9. Remove base, and level place on work tables (other connected wires can't pull overtighten).
10. Remove 3 nuts motor.
11. Remove motor.
12. Remove motor pulley.
13. Reverse procedure to reassemble.

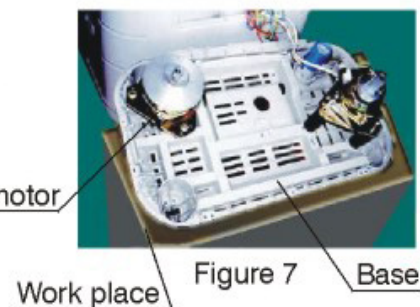


Figure 7

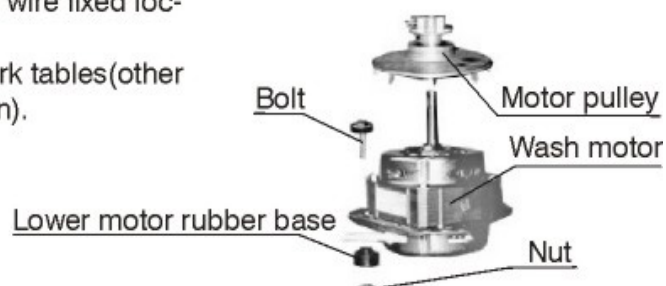
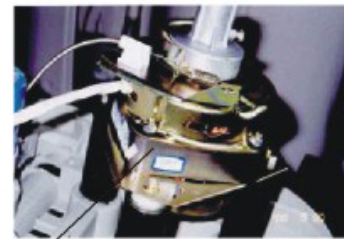


Figure 8



**To replace spin motor** (see Figure 9,10)

1. Disconnect washing machine from electrical supply.
2. Open washing machine rear cover, and remove drive belt.
3. Loosen 3 conducted wire adapter of spin motor.
4. Loosen screws securing spin tub.
5. Place a safety pad on the ground.
6. Returning washing machine to upright position.
7. Remove screws securing base and drain hose, and make base completely remove from cabinet.
8. Remove power cord from conducted wire fixed location.
9. Remove base, and level place on work tables, (other connected wires can't pull overtighten).
10. Remove 3 upward screws securing spin motor.
11. Remove spin motor assembly.
12. Loosen screw securing joint shaft sleeve, then remove joint shaft sleeve.
13. Loosen 3 screws securing brake plate, then remove.
14. Remove spin motor.
15. Reverse procedure to reassemble.



Spin motor Figure 9

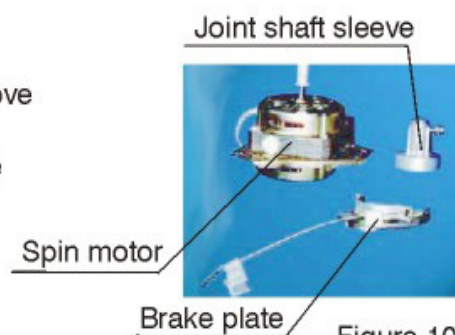


Figure 10

**To sweep abnormal things under pulsator** (see Figure 11)

1. Disconnect washing machine from electrical supply.
2. Remove pulsator screw, and remove pulsator.
3. Pulsator inversion, and sweep abnormal things in pulsator by tools like screw knife, meanwhile sweep abnormal things of tub underbody.
4. Reverse procedure to reassemble pulsator.

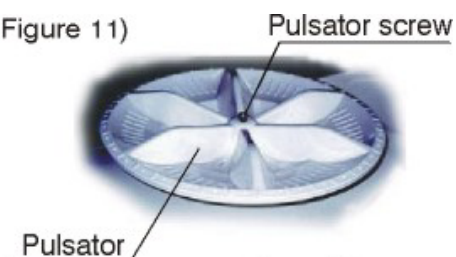


Figure 11

**To sweep abnormal things upon rotating shaft of spin tub** (see Figure 12)

1. Disconnect washing machine from electrical supply.
2. Open control panel, and loosen screw securing mid hatch, then remove mid hatch.
3. See whether or not could sweep abnormal things, if not open washing machine rear cover.
4. Loosen screw securing spin tub, and pull out spin tub.
5. Sweep abnormal things upon shaft.
6. Reverse procedure to reassemble.

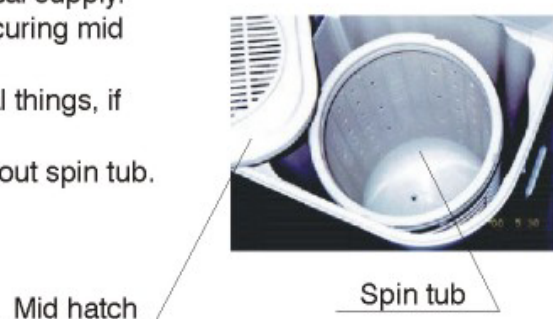


Figure 12

**To replace seal bellow** (see Figure 13)

1. Disconnect washing machine from electrical supply.
2. Open control panel, and loosen screw securing mid hatch, then remove mid hatch.
3. Open washing machine rear cover, and remove drive belt.
4. Loosen screw securing spin tub, then pull out spin tub.
5. Place a safety pad on the ground.
6. Return washing machine to upright position.
7. Remove screws securing base, and make base completely away from cabinet.
8. Remove seal bellow by mallet or other tools(no damaging wash and spin tub).
9. Fix base, then return washing machine to right position.
10. Press seal bellow into wash and spin tub by hand or other tools .
11. Install spin tub, drive belt, and washing machine rear cover.
12. Install mid hatch and control panel.

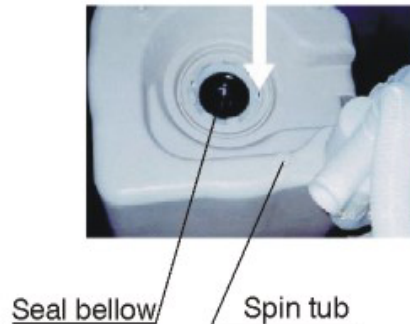


Figure 13

**To adjust unbolted height of drain valve pole** (see Figure 14)

1. Disconnect washing machine from electrical supply.
2. Open washing machine rear cover.
3. Increase unbolted height, if drainage is too slow .
4. Fall down unbolted height, if drain valve doesn't seal well.
5. Finish adjusting, and cover washing machine rear cover, and run normal.

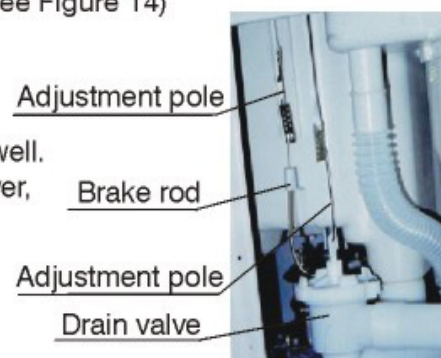


Figure 14

**To sweep abnormal things inside drain valve**(see Figure 15)

1. Disconnect washing machine from electrical supply.
2. Open washing machine rear cover.
3. Remove adjustment pole, then remove 2 fixed screws by screw knife.
4. Remove drain valve cover or prize it out by dull tools like screw knife.
5. Remove abnormal things by hand or take it by tools like iron silk.
6. Reverse procedure to reassemble .

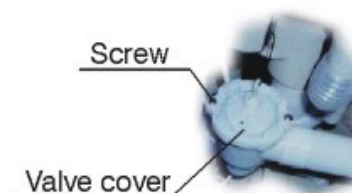


Figure 15

**To replace drain valve** (see Figure 16)

1. Disconnect washing machine from electrical supply.
2. Open washing machine rear cover.
3. Remove adjustment pole.
4. Heat three interfaces of drain valve to an extent that could pull drain valve down by hand.
5. Glue interfaces both drain valve and wash-spin tub, then force the drain valve upward.
6. Reverse procedure to reassemble other parts.

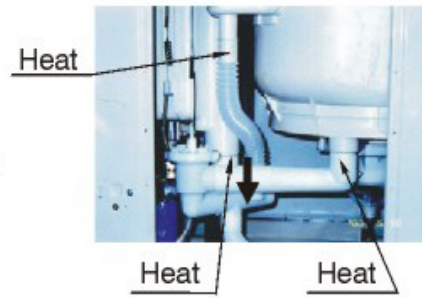


Figure 16

**To adjust brake mechanism** (see Figure 14)

1. Disconnect washing machine from electrical supply.
2. Open washing machine rear cover.
3. Adjust the height of adjustment pole to control time of brake. If brake time is too long, less unbolted distance, whereas increase unbolted distance.
4. Cover washing machine rear cover when finish adjusting.

**To replace drain pump** (see Figure 17)

1. Disconnect washing machine from electrical supply.
2. Open washing machine rear cover.
3. Remove 2 wires connected drain pump.
4. Heat two interfaces of drain pump by windblown heating equipment to an extent that could pull the hose out by hand.
5. Loosen 2 screws securing drain pump.
6. Remove drain pump.
7. Reverse procedure to reassemble.

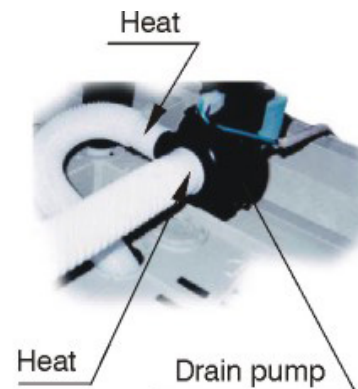
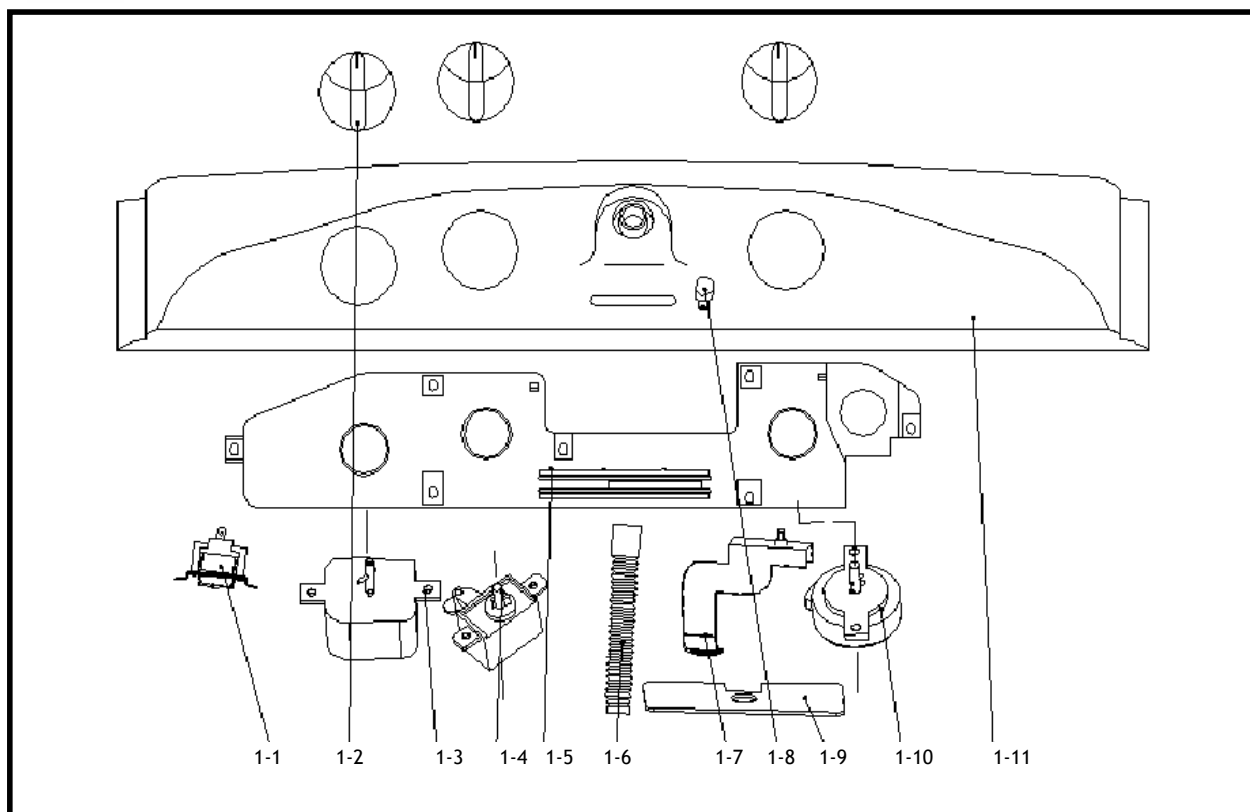


Figure 17

## 4. EXPLODE VIEW AND PARTS LIST



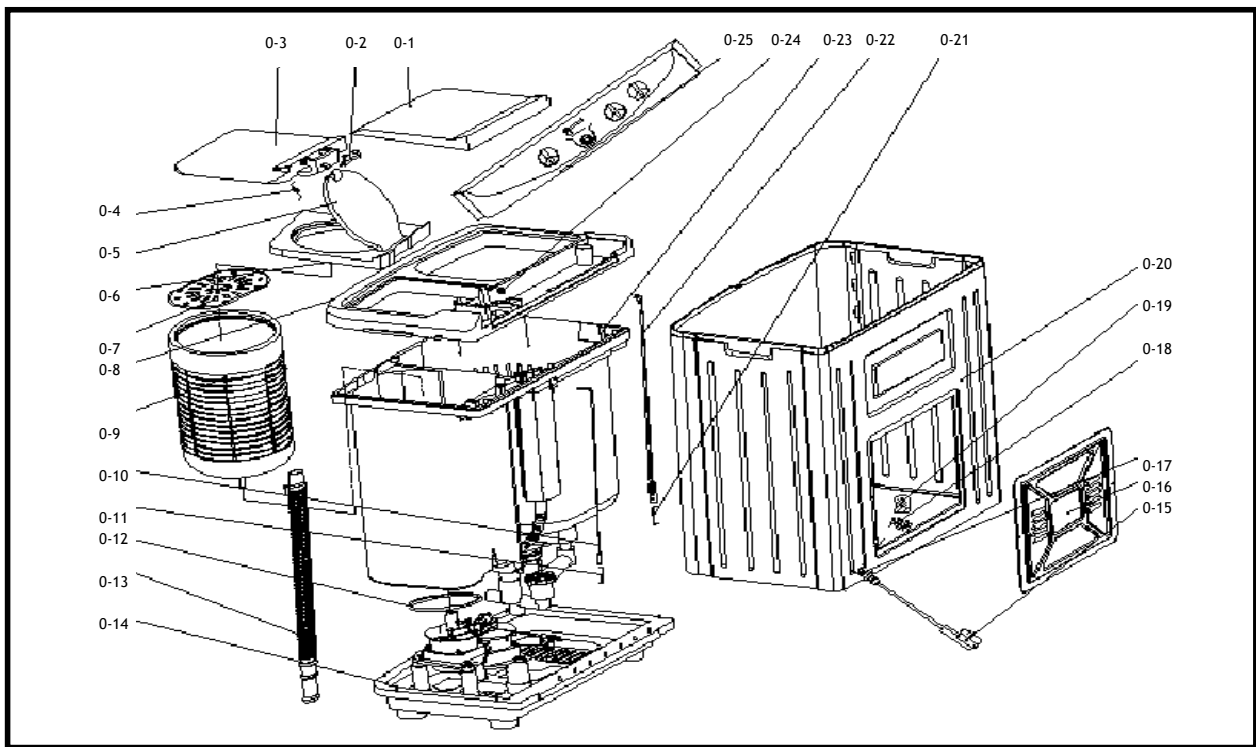
### 1) PANEL AS



SVC NO.	LEVEL	PART CODE	PART NAME	SPECIFICATION	QTY	Remark
1-1	1.1.11	T.59	BUZZER		1	
1-2	1.1.1	S622021-2-3	KNOB	ABS	3	
1-3	1.1.2	T58	WASH TIMER		1	
1-4	1.1.3	S4528-2.6	SELECTOR S/W		1	
1-5	1.1.4	S622021-2-2	BRACKET PANEL	ABS	1	
1-6	1.1.5	S622021-2-6	WATER INLET HOSE	EVA	1	
1-7	1.1.6	S622021-2-4	WATER SUPPLY INLET	PP	1	
1-8	1.1.7	S622021-2-5	SELECTOR KNOB	PP	1	
1-9	1.1.8	S622021-2-7	PLATE VALVE CONNECT	PP	1	
1-10	1.1.9	T.22B	SPIN TIMER		1	
1-11	1.1.10	S622021-2-1	PANEL B	ABS	1	

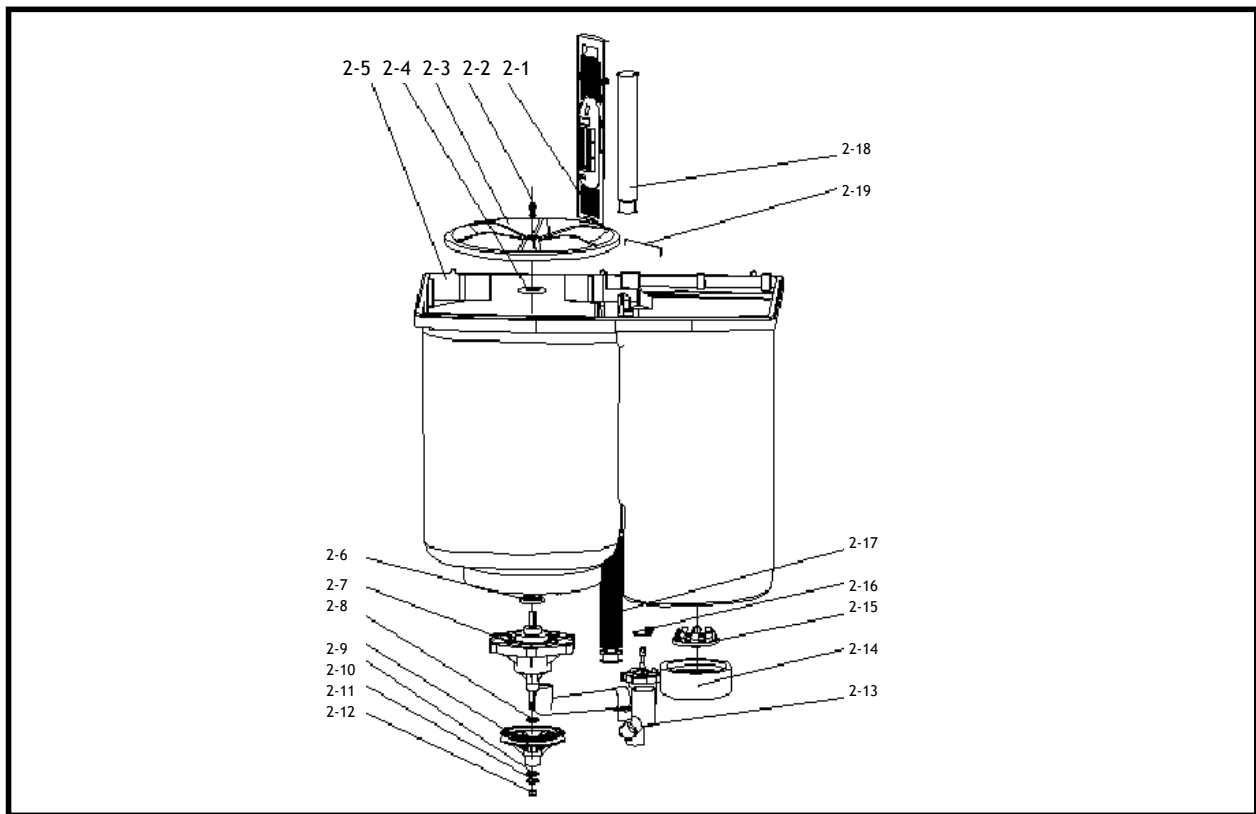


## 2) TUB COVER AS



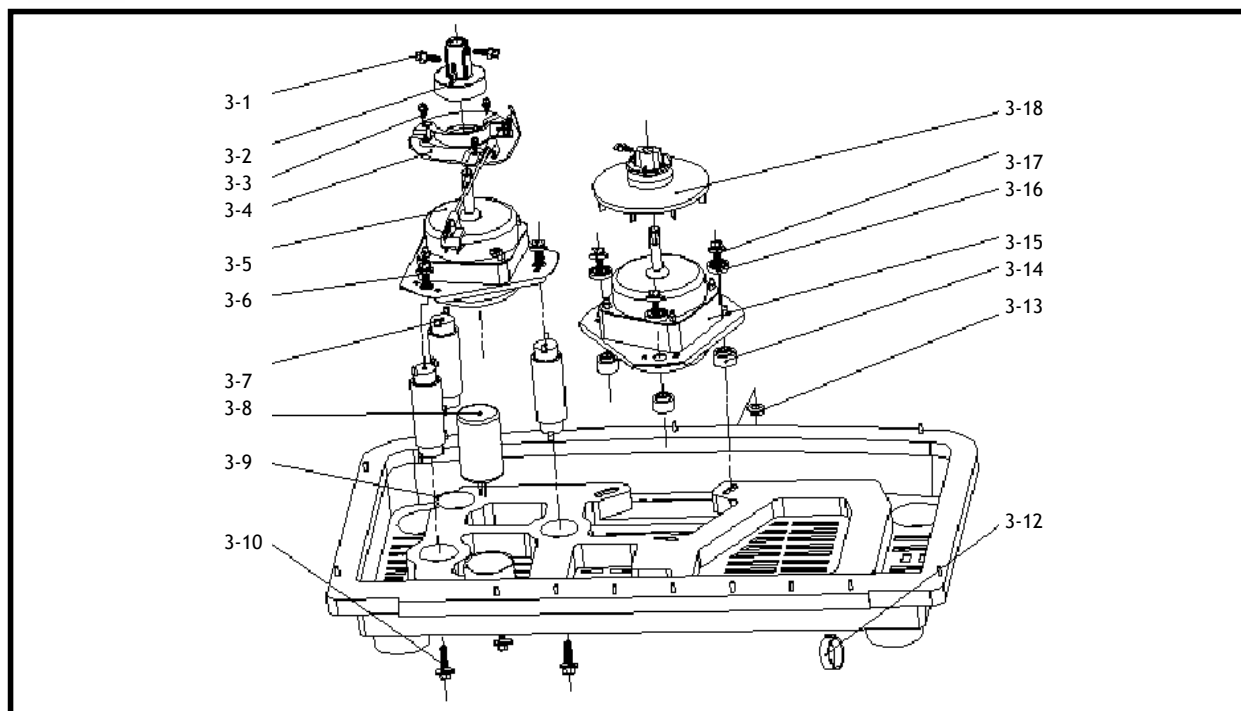
SVC NO.	LEVEL	PART CODE	PART NAME	SPECIFICATION	QTY	Remark
-	2.1		Tub Cover As	Assembly	1	
0-1	2.1.2	S562003-0-1	DOOR WASH	ABS	1	
0-2	2.1.3		COVER S/W		1	
0-3	2.1.4	S562003-0-2	DOOR SPIN	ABS	1	
0-4	2.1.5	S582003-0-3	DOOR SPRING	f 1.6	1	
0-5	2.1.6	S562003-5-2	COVER INNER	PP	1	
0-6	2.1.1	S562003-5-1	TOP PLATE	PP	1	
0-7	3.3	S4528-0-3	SAFETY COVER	LDPE	1	
-	3.5	S562003.B-4	SPIN BASKET CUSHION	EPS	1	
-	3.6	S622021-0-1	RATING LABEL		1	
-	3.7		WIRING LABEL		1	
0-8	2.1.9		COVER TUB		1	
0-9	3.2	S562003-5-3	SPIN BASKET ASS'Y	Assembly	1	
-	2.1.7		BASE WATER SUPPLY		1	
0-10	2.1.8	S562003-0-5	LINK BRAKE	Assembly	1	
0-11	2.1.8.1					
0-12	4.2	S562003-0-4	V-BELT		1	
0-13	3.8	S562003-3-2	DRAIN HOSE O	LDPE	1	
0-14	4.1	S562003-4	BASE UNDER ASS'Y	Assembly	1	
0-15	4.3		POWER CORD		1	
0-16	4.4	S562003-0-6	BACK COVER	PP	1	
0-17	4.5		SCREW			
0-18	4.6	S258-0-7	CEC		8	
0-19	4.7	T.29	PE BAG	PE	2	
0-20	4.8	S562003-1	BASE	PP	1	
0-21	1.1.12	S258-6	LINK VALVE	Assembly	1	
0-22	1.1.12.1					
0-23	3.1	S562003-3	TUB AS	Assembly	1	
0-25	1.1	S622021-2	PANEL ASS'Y	Assembly	1	

### 3) TUB AS (WASH & SPIN TUB AS)



SVC NO.	LEVEL	PART CODE	PART NAME	SPECIFICATION	QTY	Remark
2-1	3.1.1	S622021-3.1	OVERFLOW FILTER	PP ( assembly )	1	
2-2	3.1.2	S2510-5-3	PULSATOR SCREW	1Cr13	1	
2-3	3.1.3	S562003-3-2A	PULSATOR ASS'Y	PP	1	
2-4	3.1.4	S4528-3-7	WASHER		1	
2-5	3.1.5	S562003-3-1	TUB	PP	1	
2-6	3.1.6	S40228-3-8	GASKET	NBR	1	
2-7	3.1.7	S562003-3-5B	GEAR HOUSING ASS'Y	Assembly	1	
2-8	3.1.8	S562003-3-5.1	SPECIAL WASHER	45	1	
2-9	3.1.9	S562003-3-6	P-PULLEY	PP 30%	1	
2-10	3.1.10		SPECIAL WASHER		1	
2-11	3.1.11		SPRING WASHER		1	
2-12	3.1.12		NUT		1	
2-13	3.1.13	T.35	DRAIN VALVE ASS'Y	Assembly	1	
-	3.1.14	T.37	BELLOW AS	Assembly	1	
2-14	3.1.14.1		BELLOW		1	
2-15	3.1.14.2	S3012-3-16	PACKING BELLOW	PP	1	
2-16	3.1.15	S3012-3-17	GASKET VALVE	NR	1	
2-17	3.1.16	S5028-3-10	OVER FLOW HOSE	EVA	1	
2-18	3.1.17	S562003-0-10	FILTER GUIDE	f 1.6	1	
2-19	3.1.18	S4528-3-6	OVER FLOW HOSE ( INNER )	LDPE	1	

#### 4) BASE UNDER AS(BASE AS)



SVC NO.	LEVEL	PART CODE	PART NAME	SPECIFICATION	QTY	Remark
3-1	4.1.2.2		SCREW			
3-2	4.1.2.3	S3518-4.4	DRUM COUPLING ASS'Y	Assembly	1	
3-3	4.1.2.4	GB9074.4-88	SCREW 4 X 8	35	3	
3-4	4.1.2.5	S3518-4.3A	BRAKE FIXING PLATE ASS'Y	Assembly	1	
3-5	4.1.2.1	T.18	SPIN MOTOR		1	
3-6	4.1.3	S3518-3-1	SCREW 5 X 15	5 X 15	6	
3-7	4.1.4	S3012-4.2	SPIN MOTOR CUSHION ASS'Y	Assembly	3	
3-8	4.1.5	S4528-4-2	CAPACITOR	4uF+10uF	1	
3-9	4.1.1	S562003-4-1	BASE UNDER	PP	1	
-	4.1.2		SPIN MOTOR AS		1	
3-10	4.1.7	S3518-3-1	SCREW 5 X 15	5 X 15	6	
-	4.1.8		WASH MOTOR AS		1	
3-12	4.1.9	T.27-2A	DRAIN HOSE GUIDE	PP	1	
3-13	4.1.10	S3012-4-8	NUT	A3	3	
3-14	4.1.11	S3012-4-7	WASH MOTOR CUSHION	Assembly	3	
3-15	4.1.8.1	T.20	WASH MOTOR	XD-120	1	
3-16	4.1.12	S3012-4-6	CUSHION UPPER		3	
3-17	4.1.13	S3012-4-5	SPECIAL BOLT ( MOTOR )	Q235-A	3	
3-18	4.1.8.2	S562003-4-2	MOTOR PULLEY ASS'Y	ADC12	1	

#### 5) PACKING MATERIAL

SVC NO.	LEVEL	PART CODE	PART NAME	SPECIFICATION	QTY	Remark
-	5.1	S562003.B-1	PACKING BOX	DW	1	
-	5.2	S4528.B-8	PACKING COVER	PE 0.012	1	
-	5.3	S562003.B-2	TOP CUSHION	EPS	1	
-	5.4	S562003.B-3	BOTTOM CUSHION	EPS	1	
-	5.5	T.15A	HOSE INLET	E/VAC	1	
-	5.6	S622021.SY	MANUAL OWNER	Printing	1	

## 5. WIRING DIAGRAM

---

