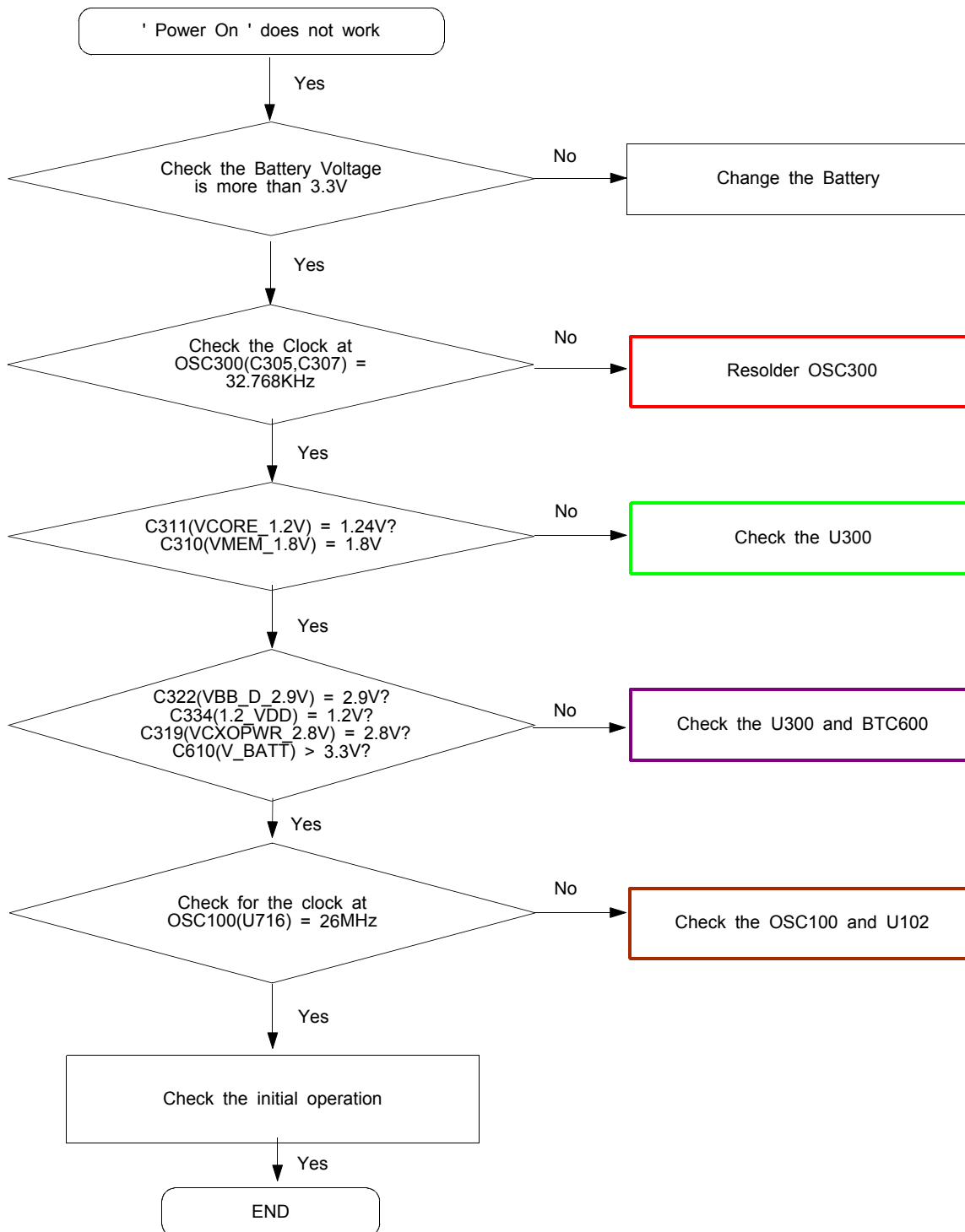
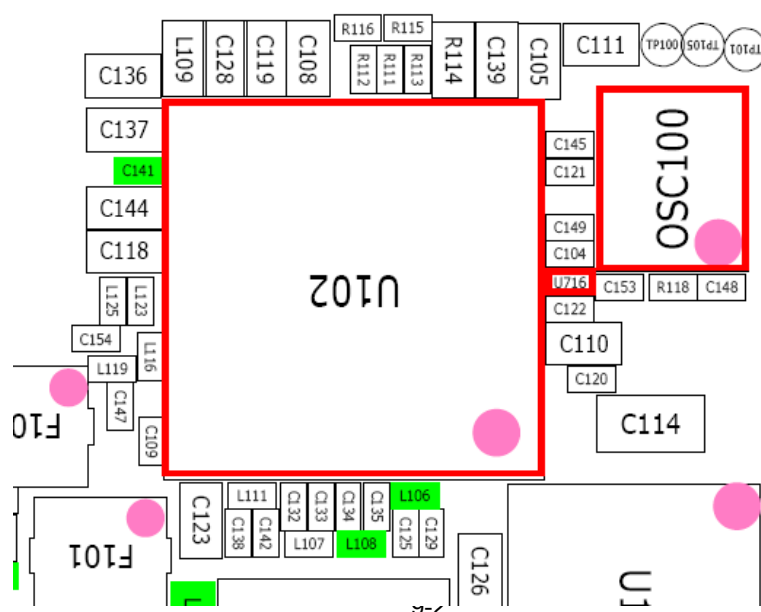
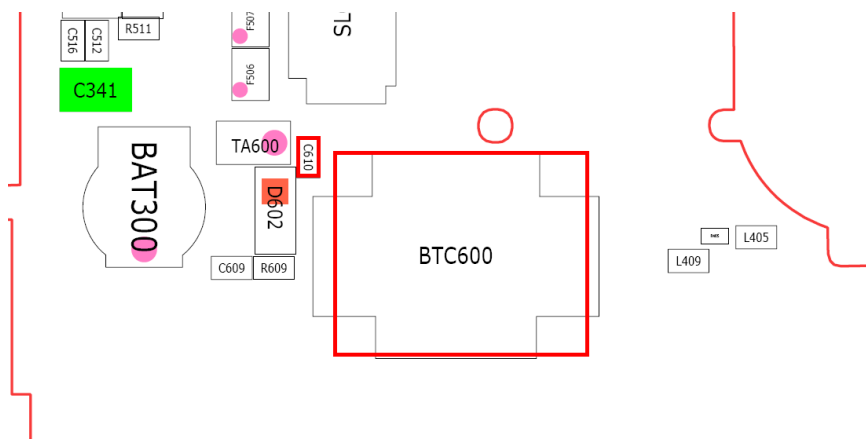


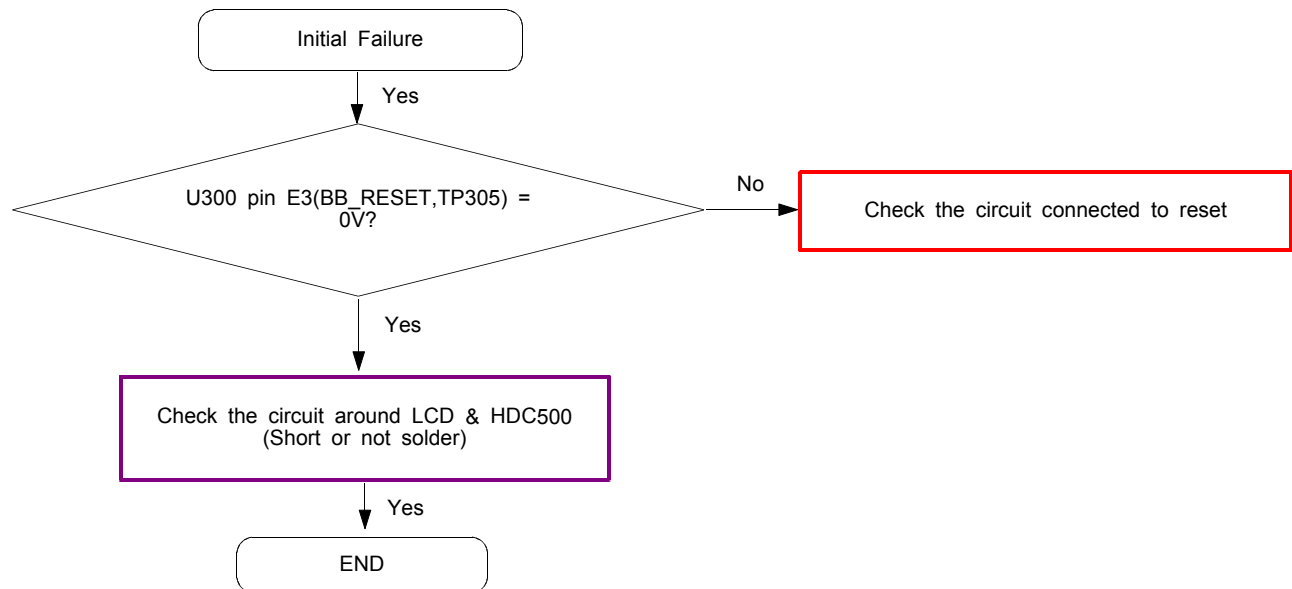
## 9. Flow Chart of Troubleshooting

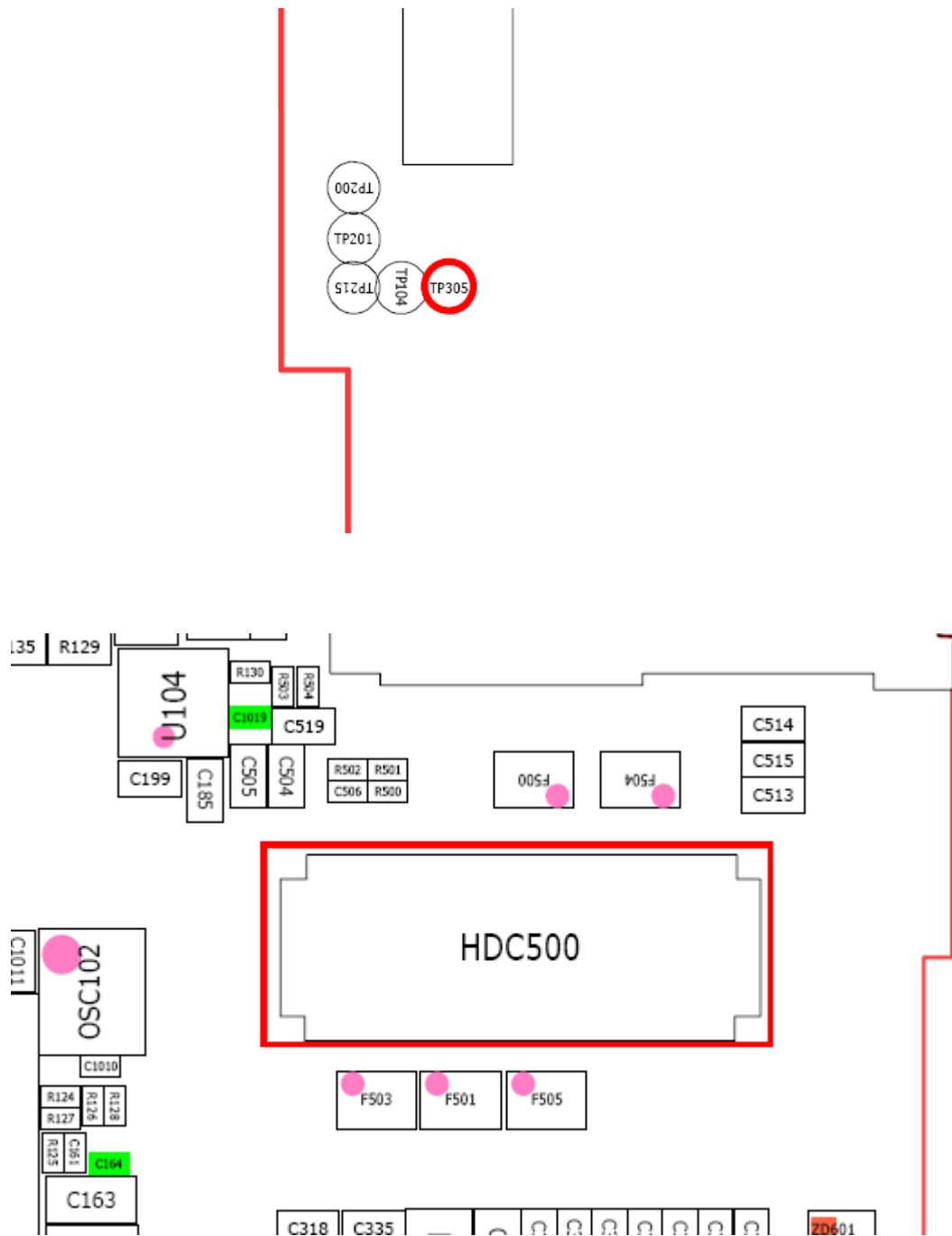
### 9-1. Power On



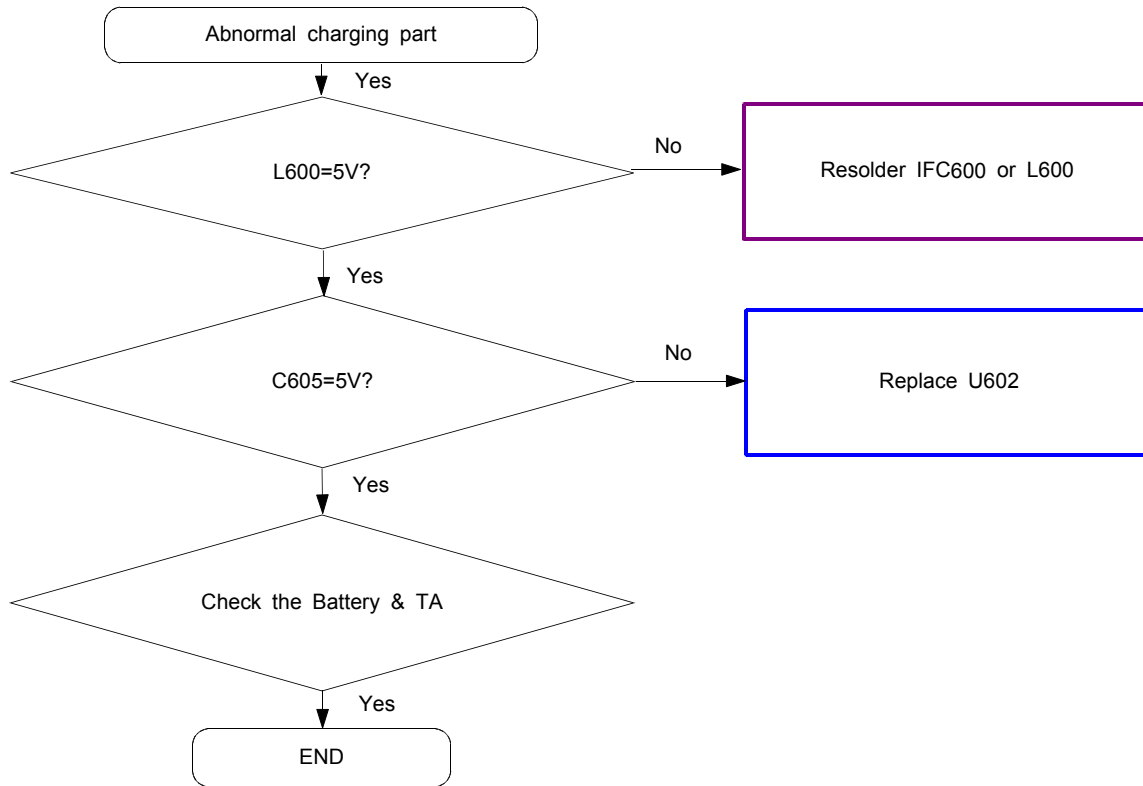


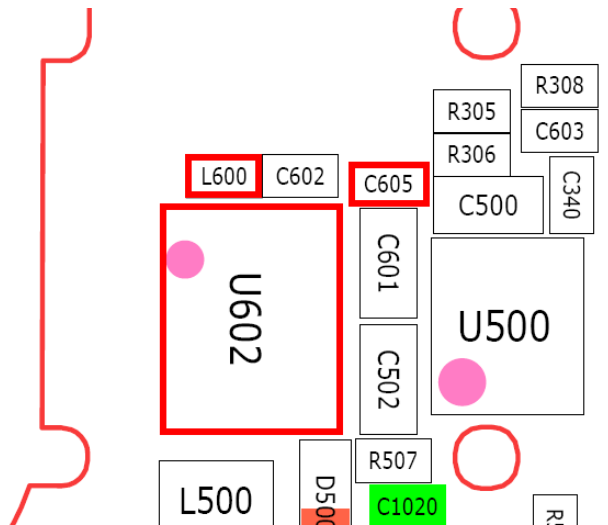
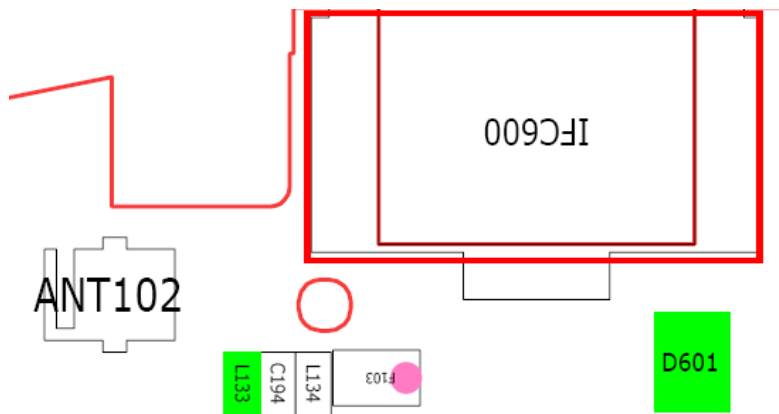
## 9-2. Initial



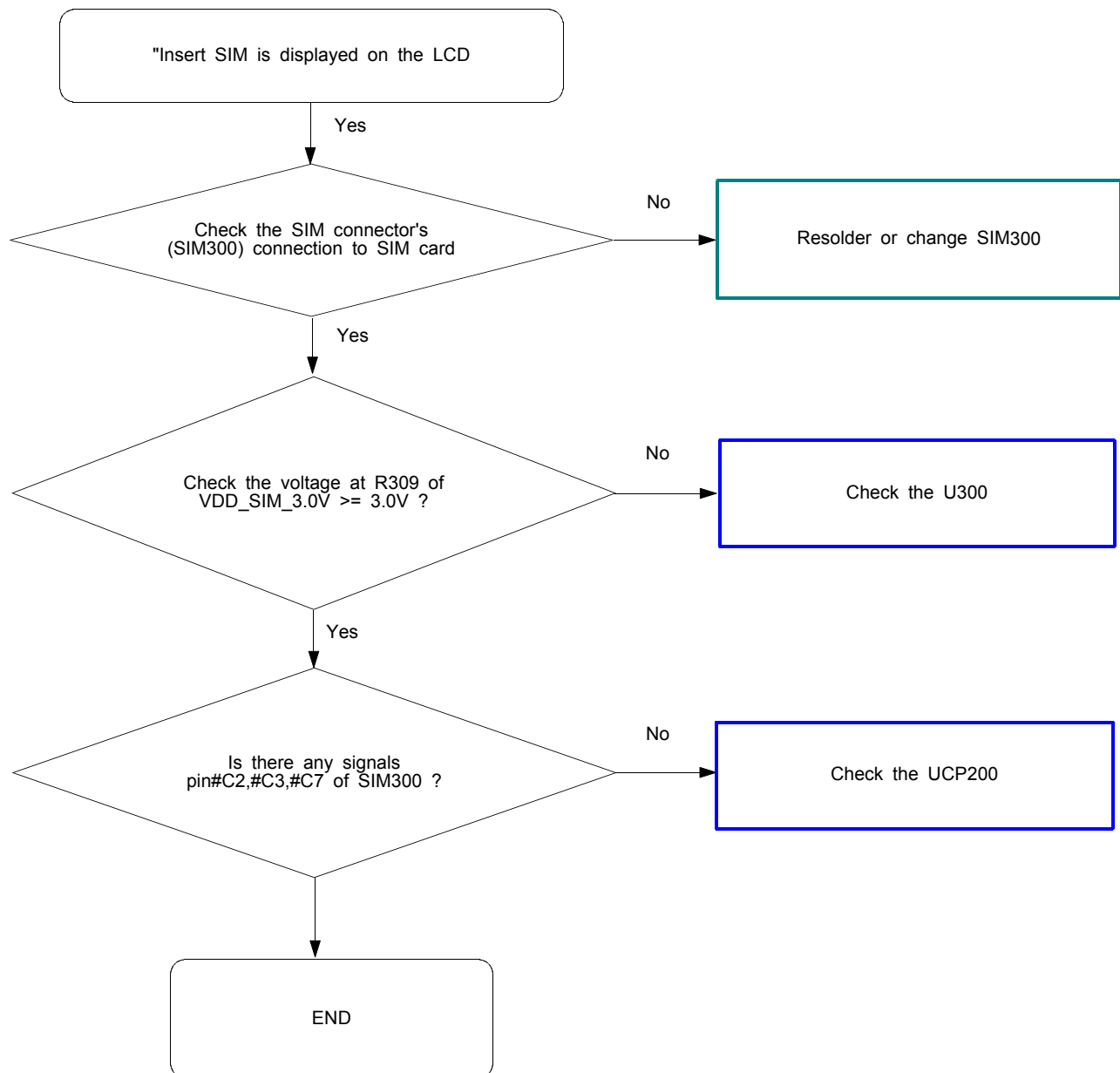


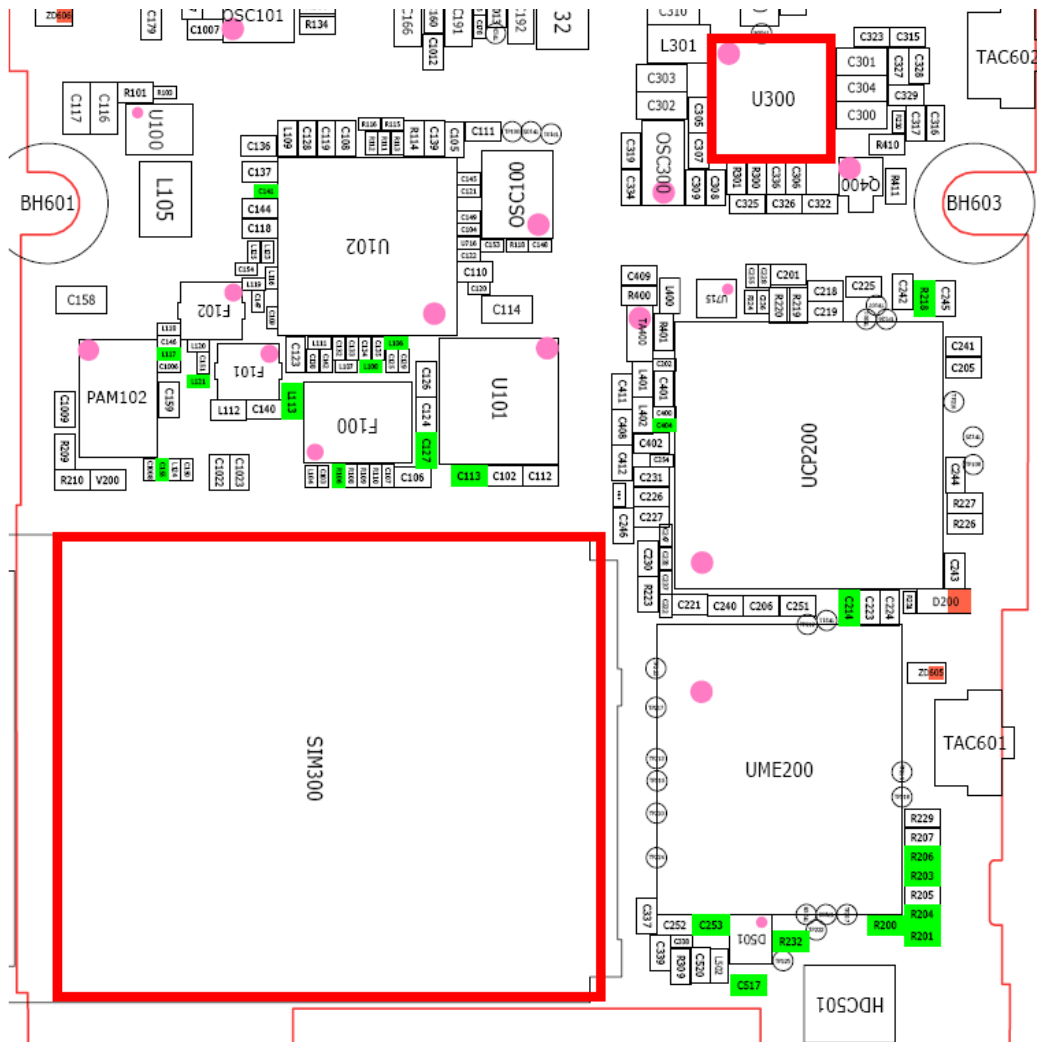
### 9-3. Charging Part





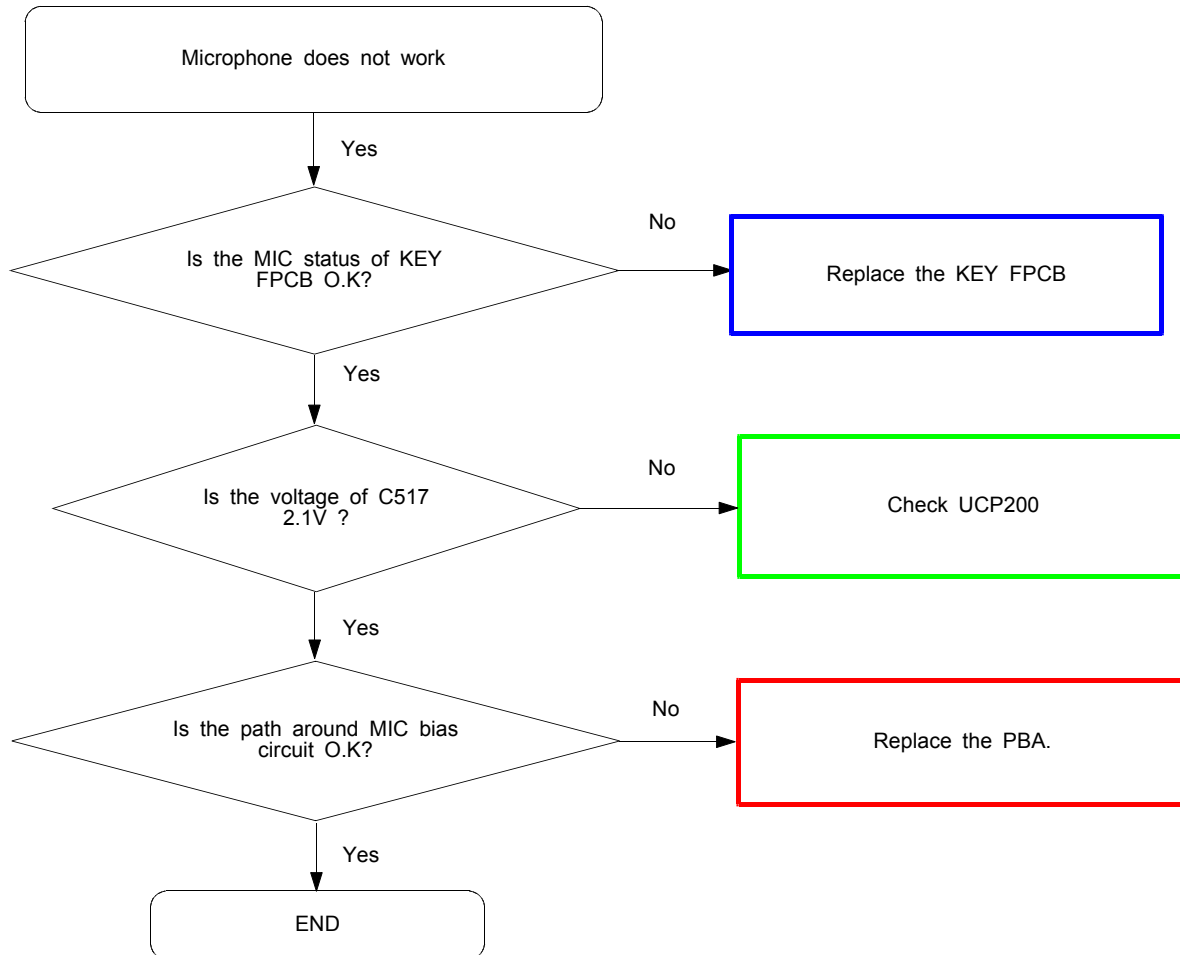
## 9-4. Sim Part

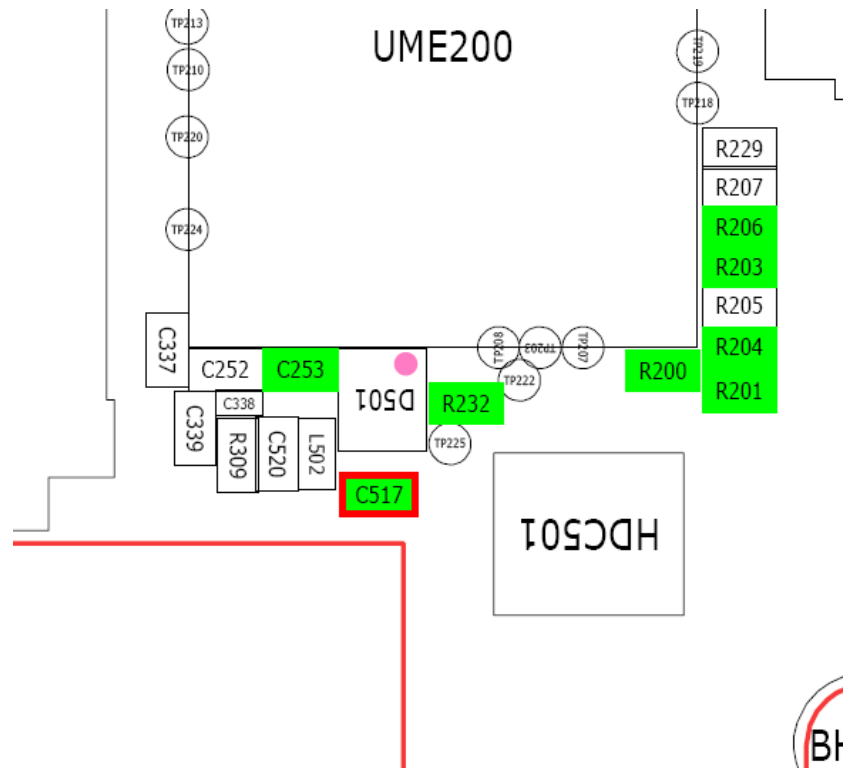




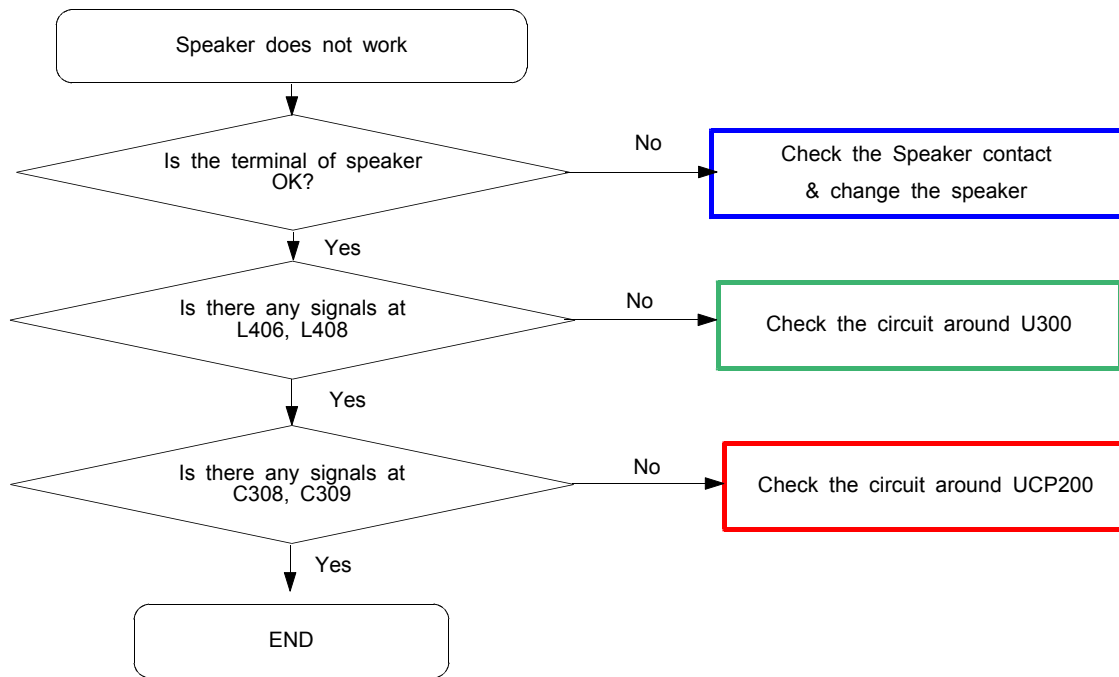


## 9-5. Microphone Part

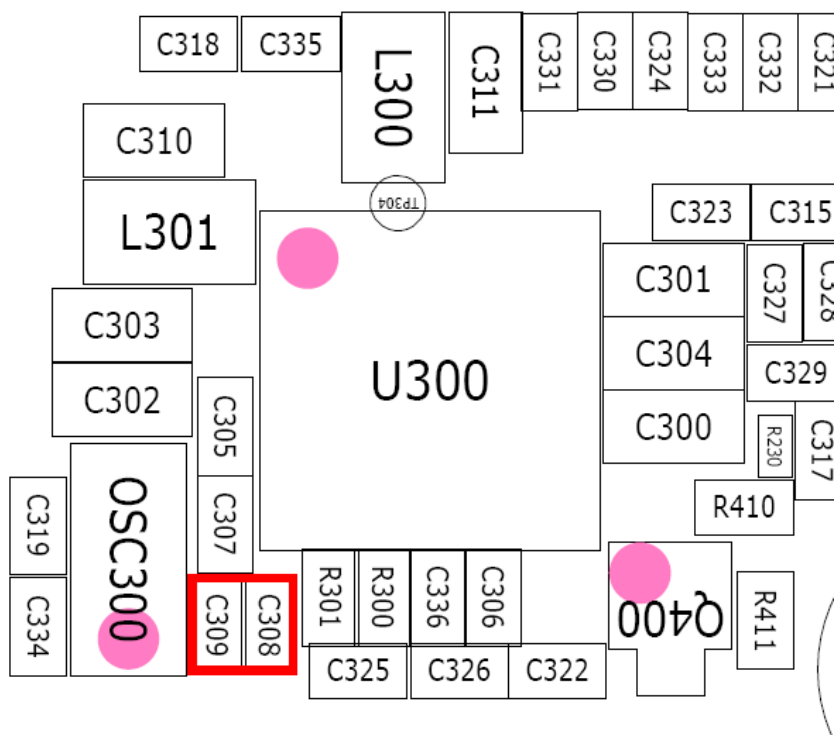
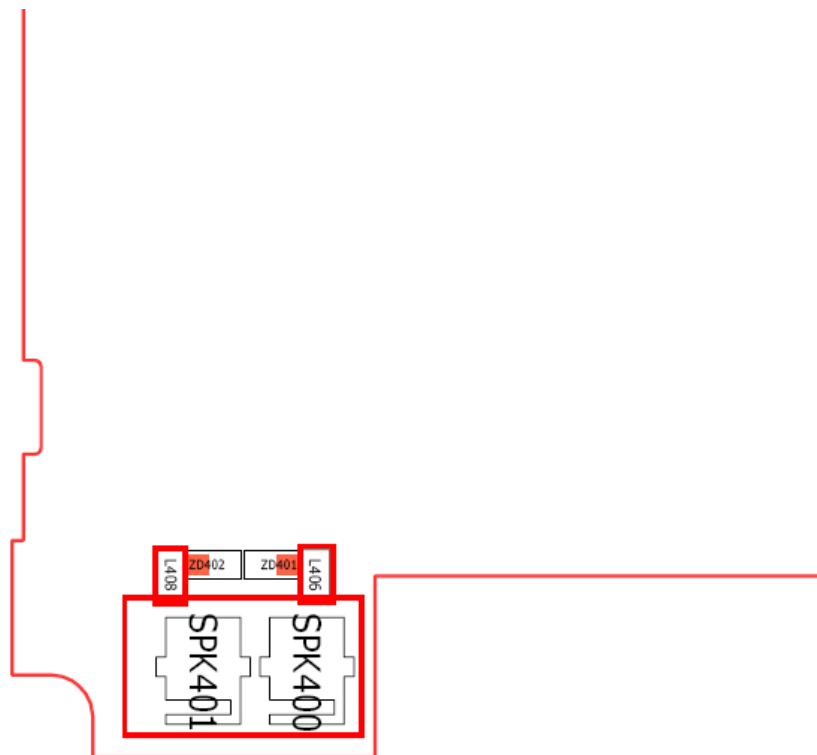




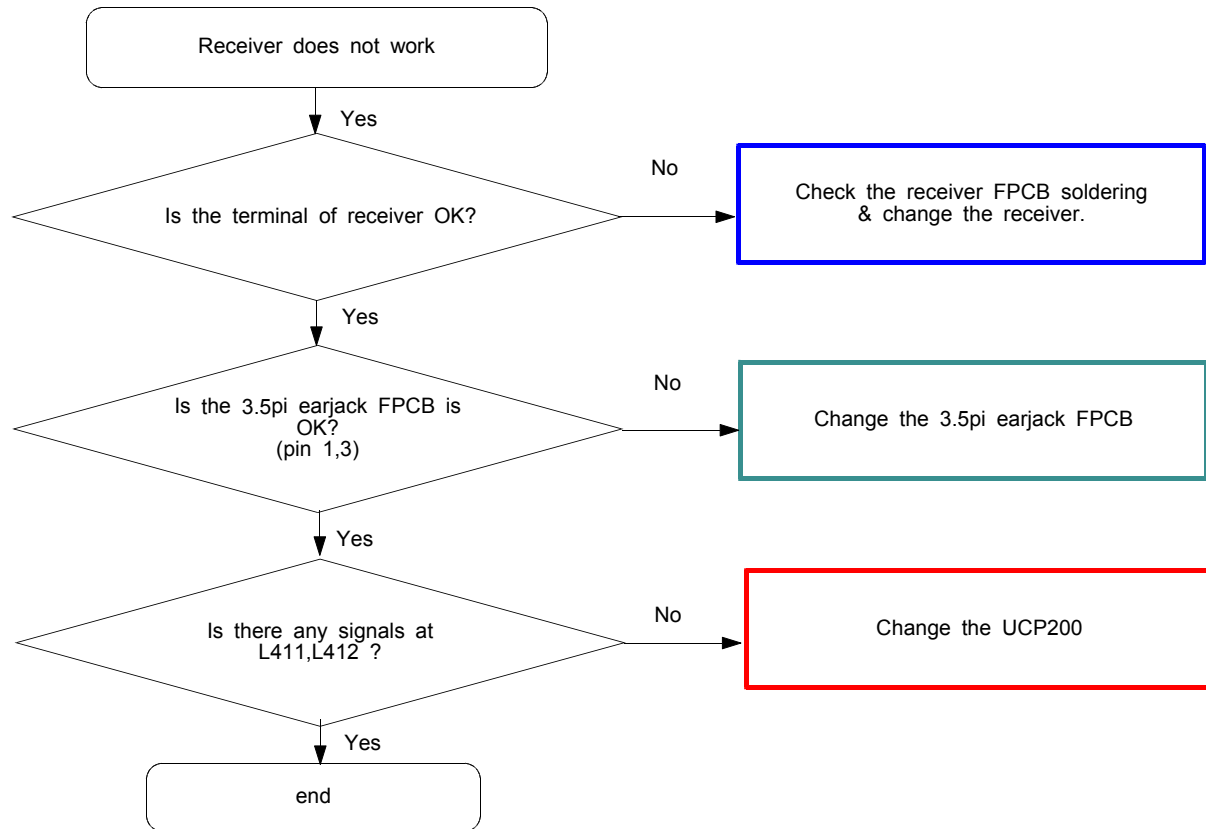
## 9-6. Speaker Part

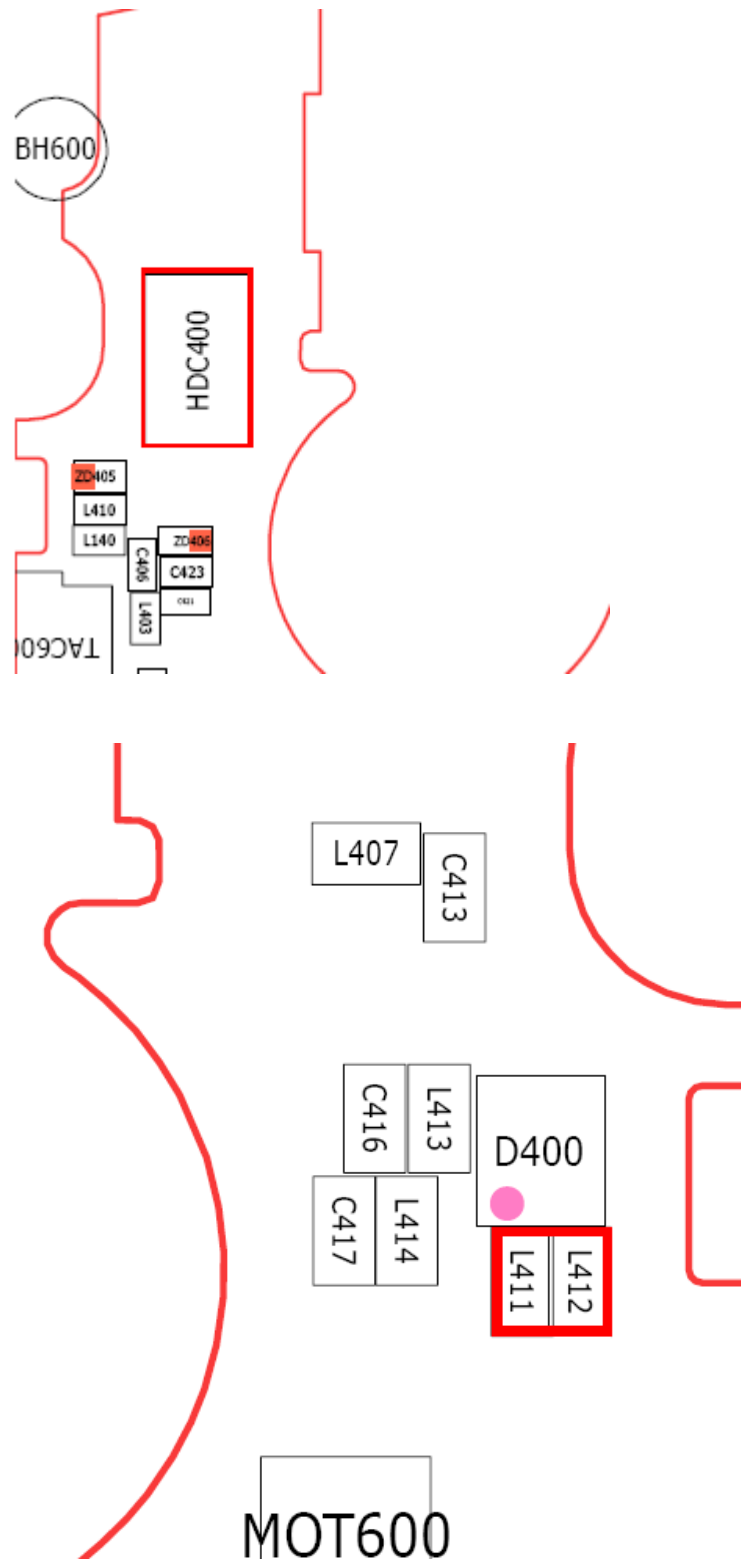


<SPK contact>

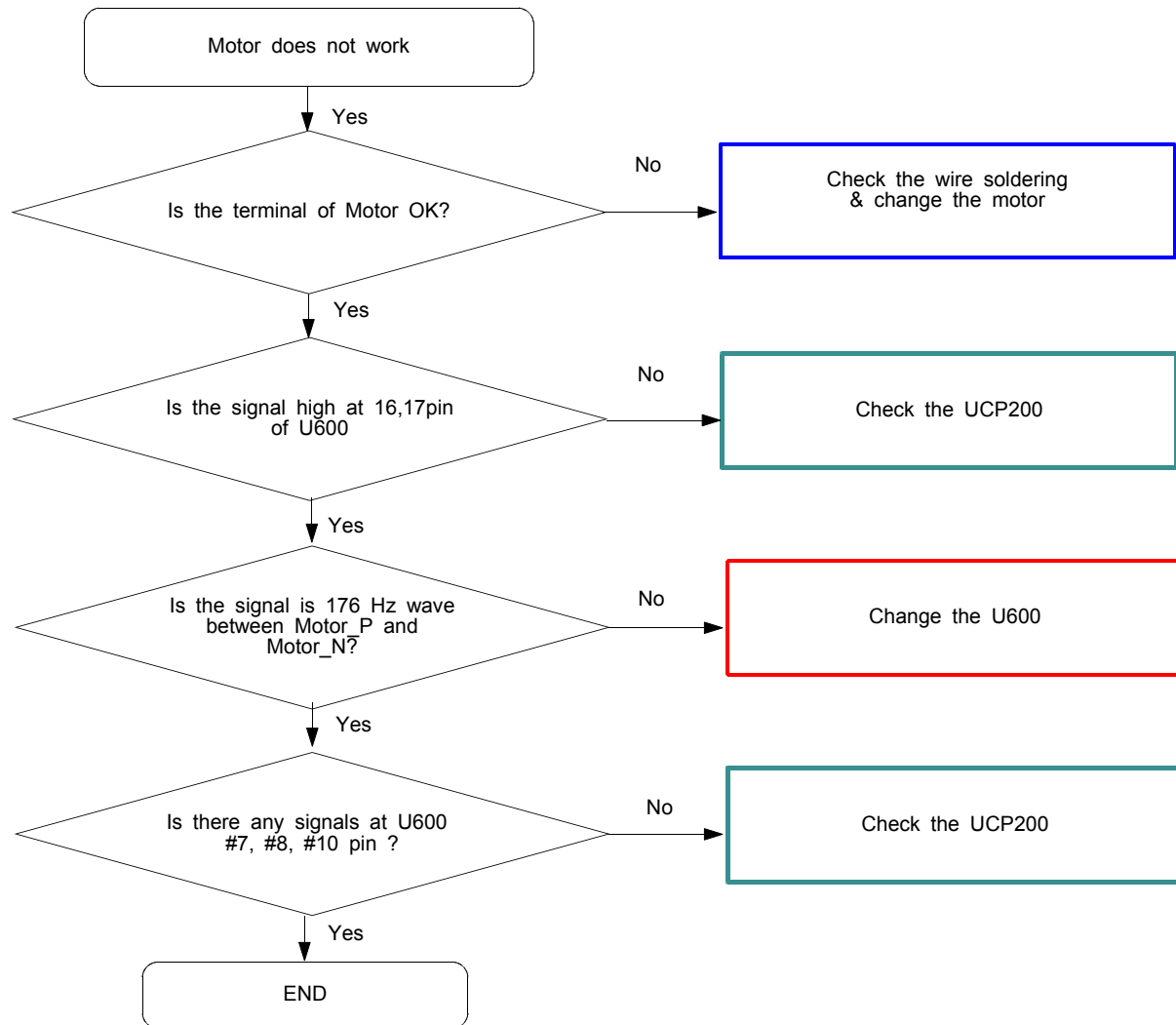


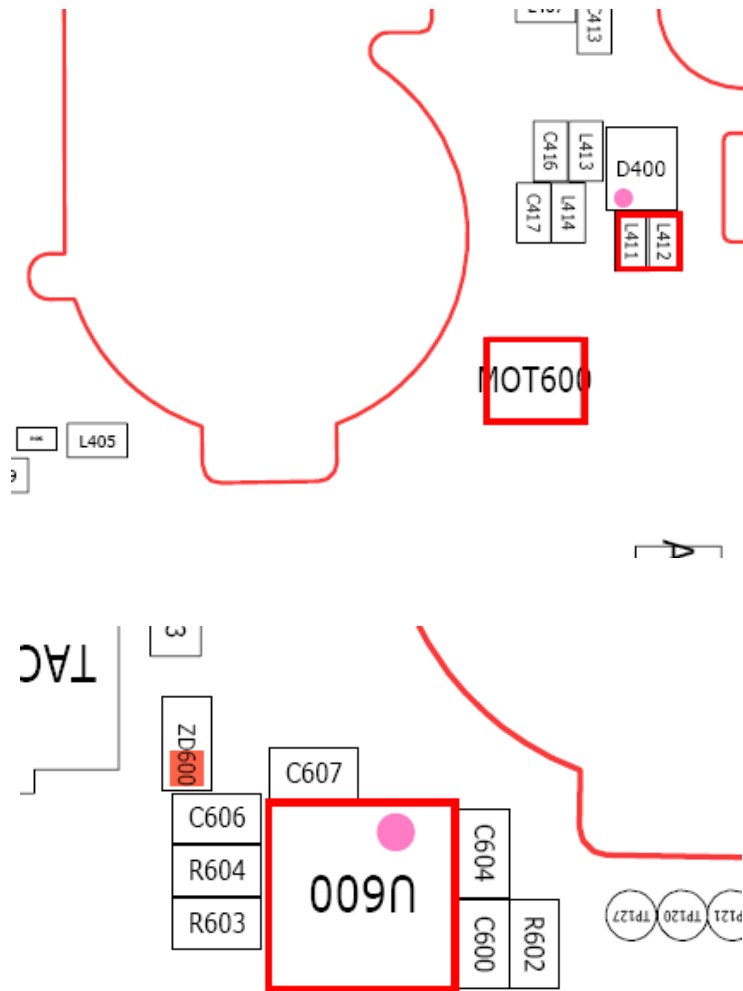
## 9-7. Receiver Part





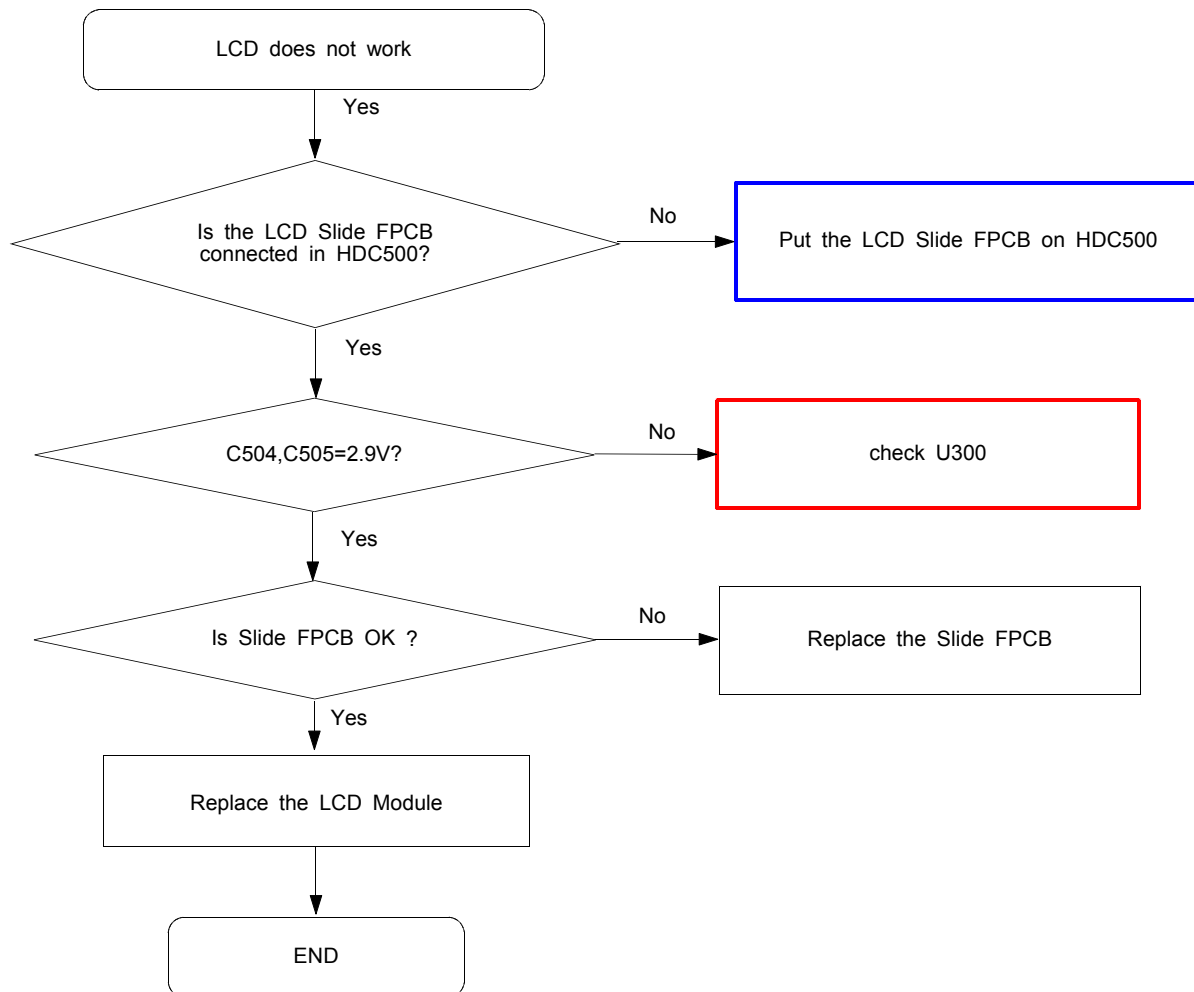
## 9-7. Motor Part

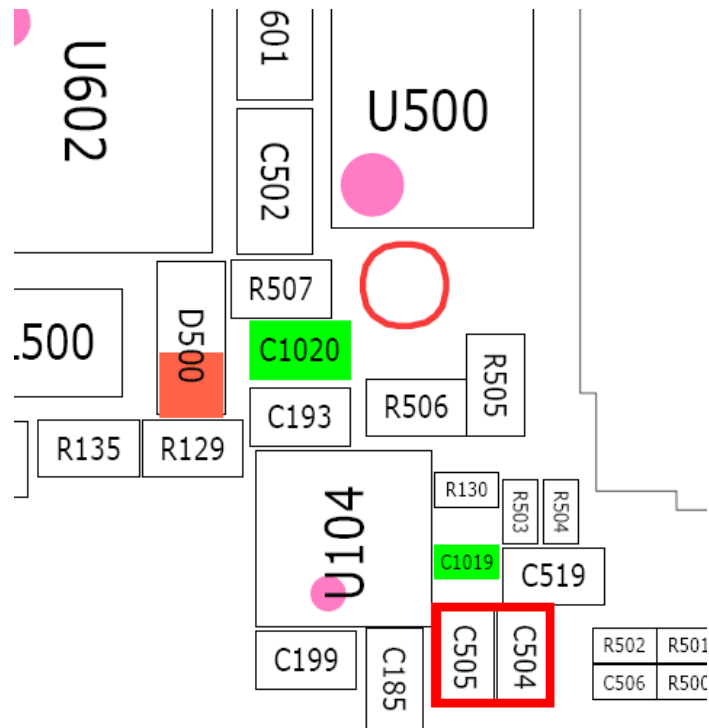
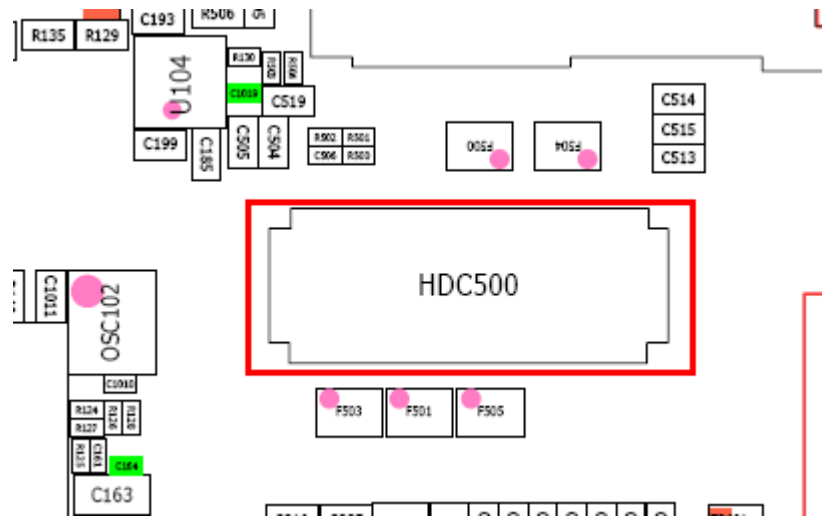




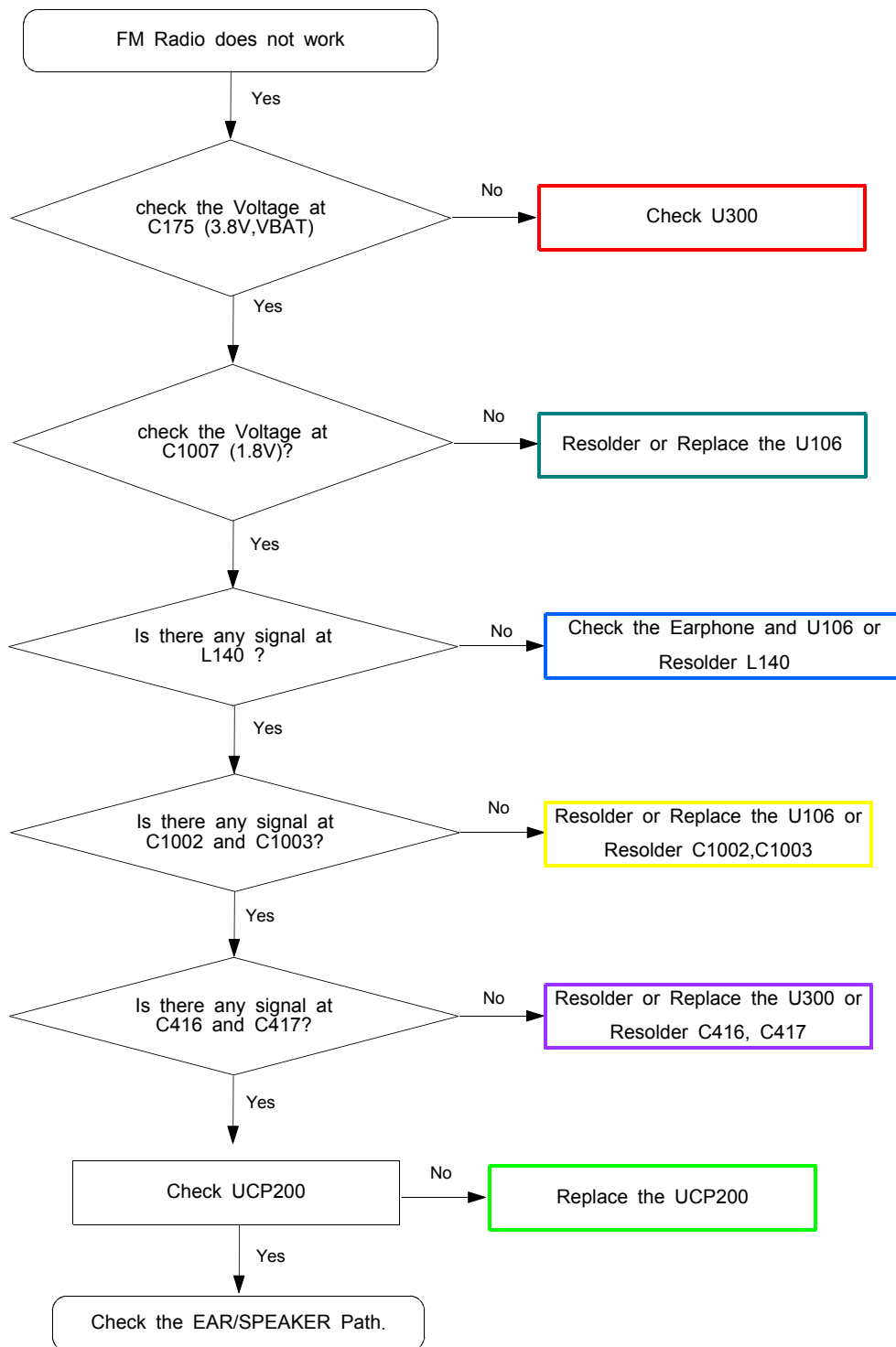


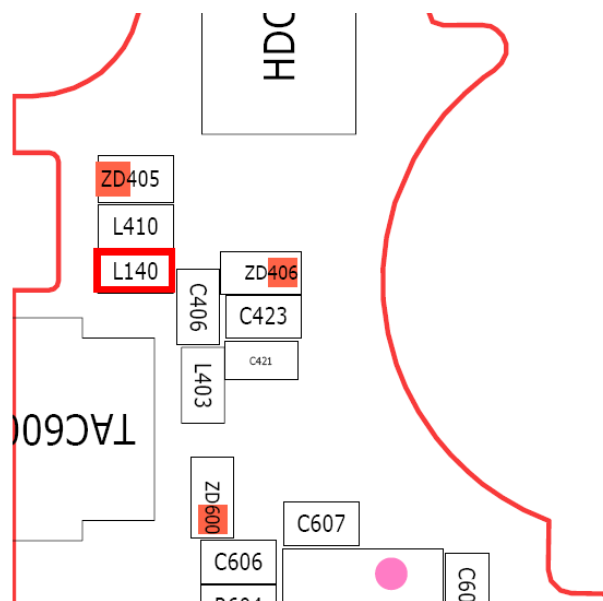
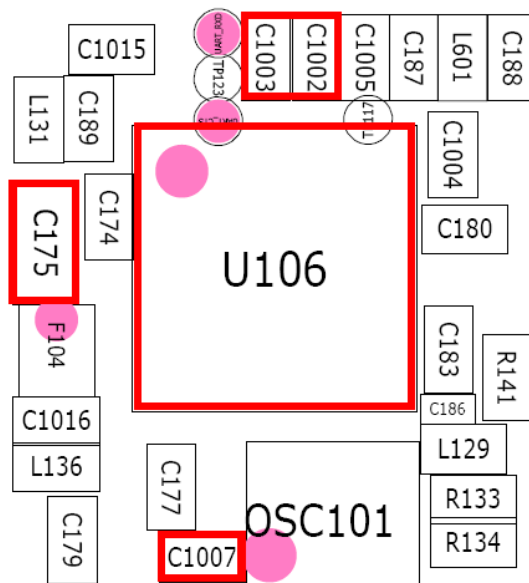
## 9-8. LCD part

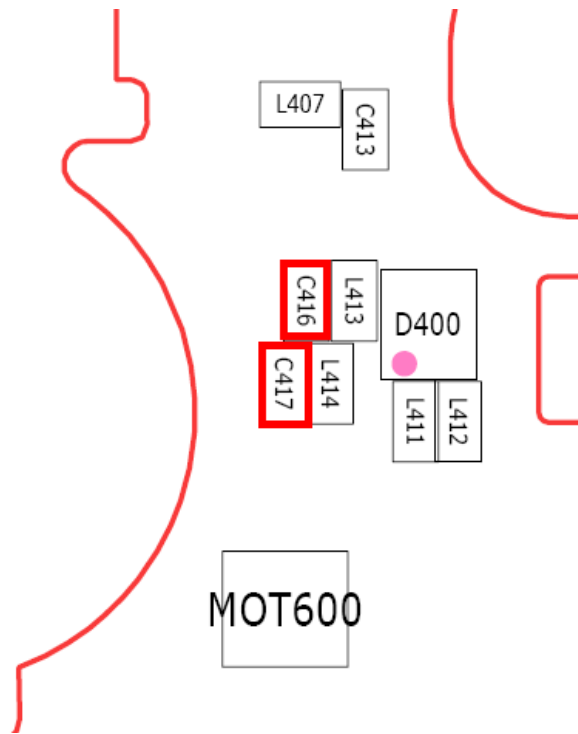




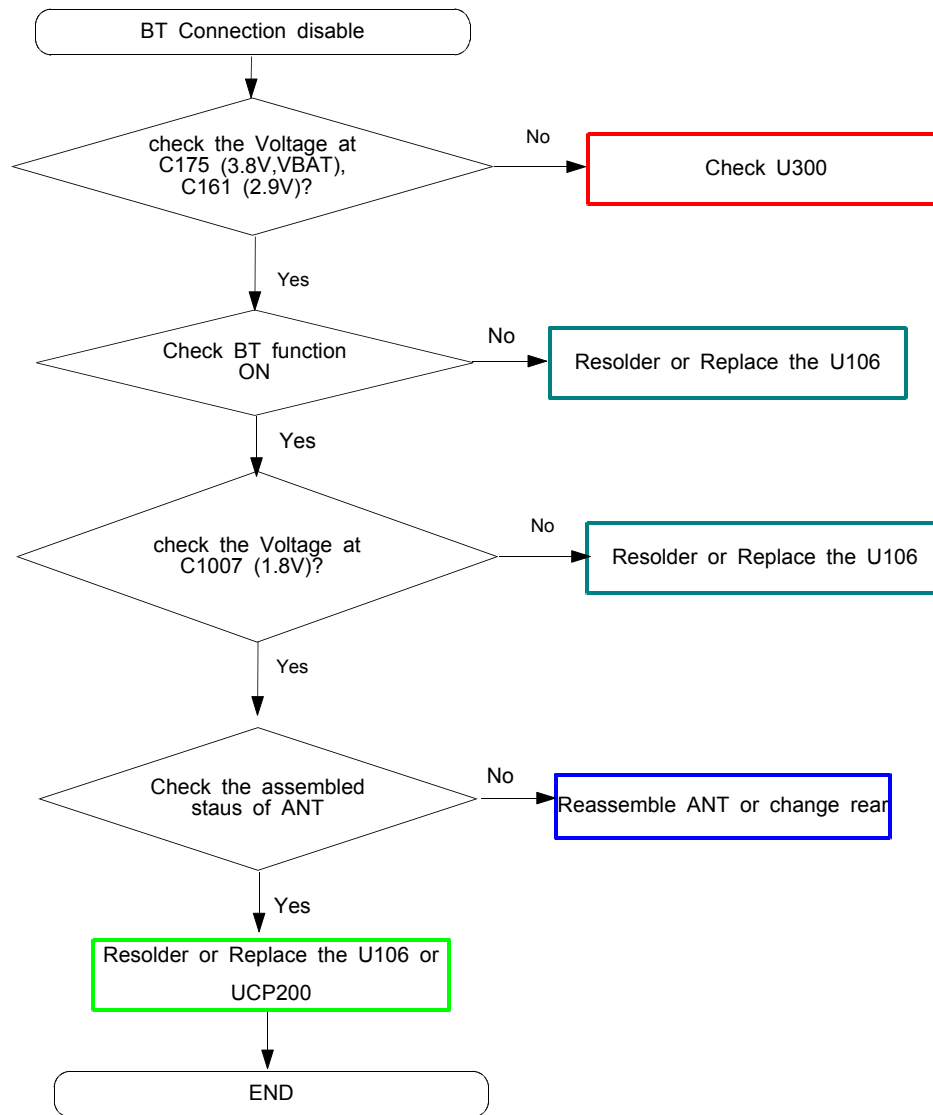
## 9-9. FM RADIO Part

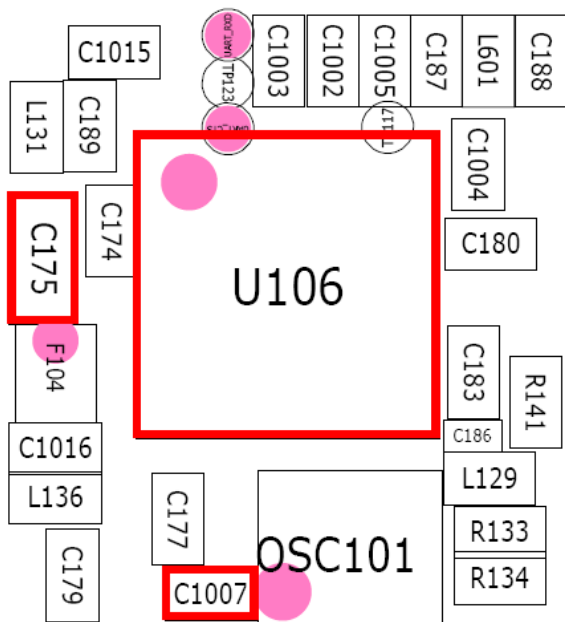
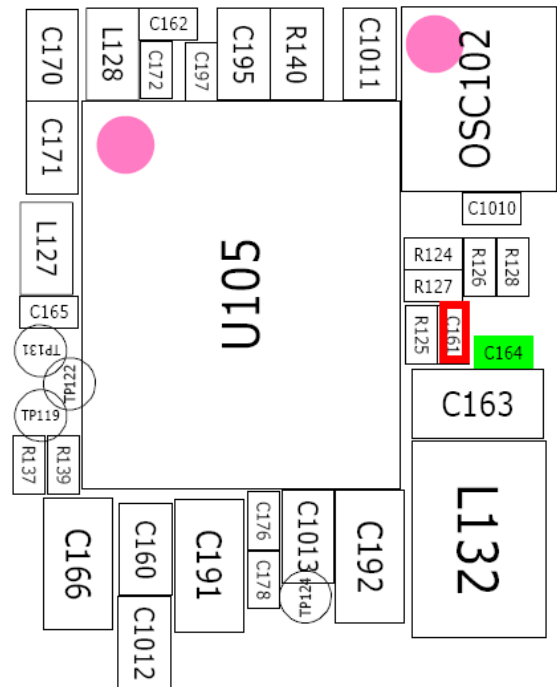




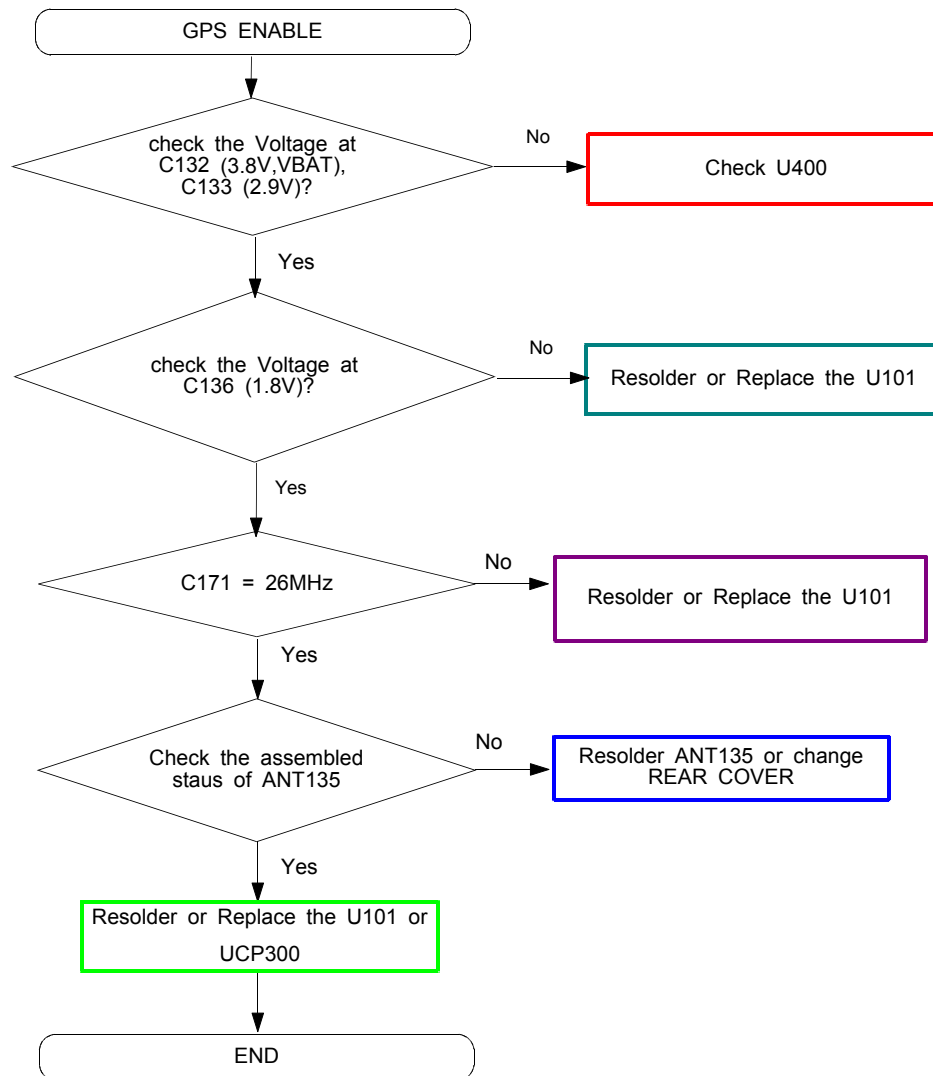


## 9-10. Bluetooth Part





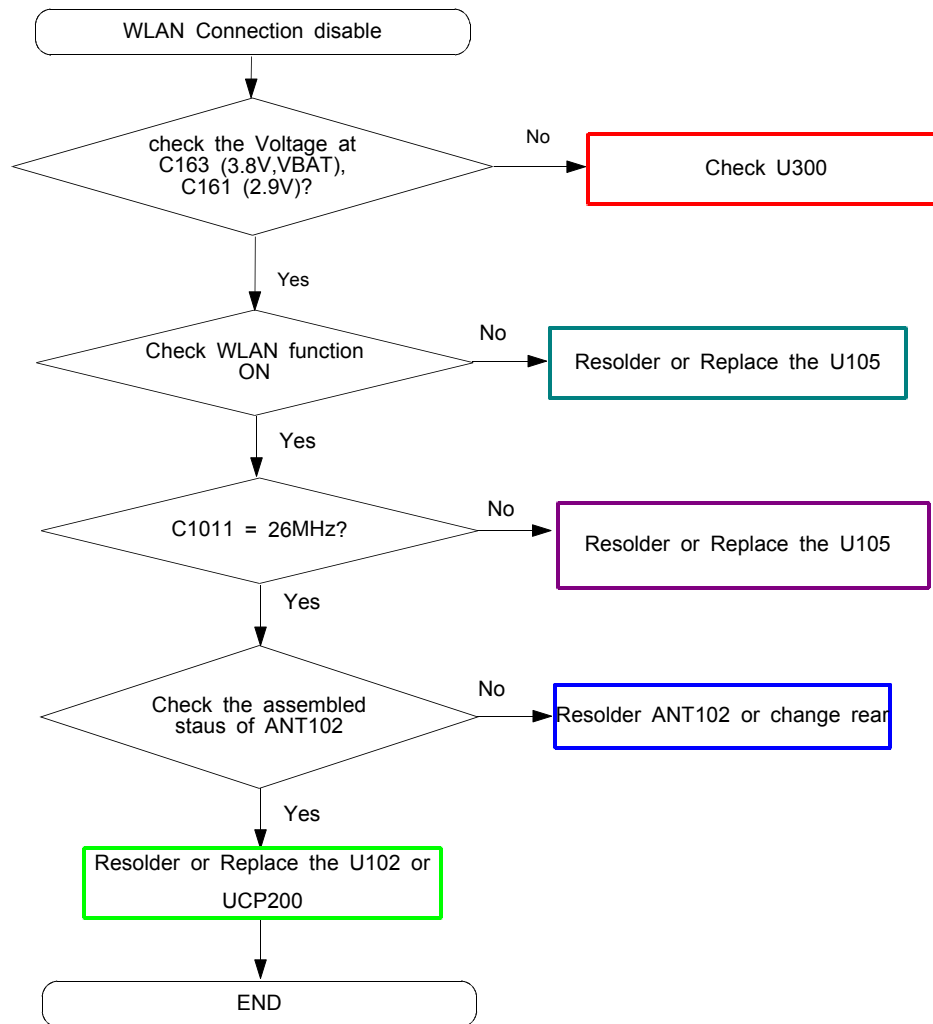
## 9-11. GPS Part





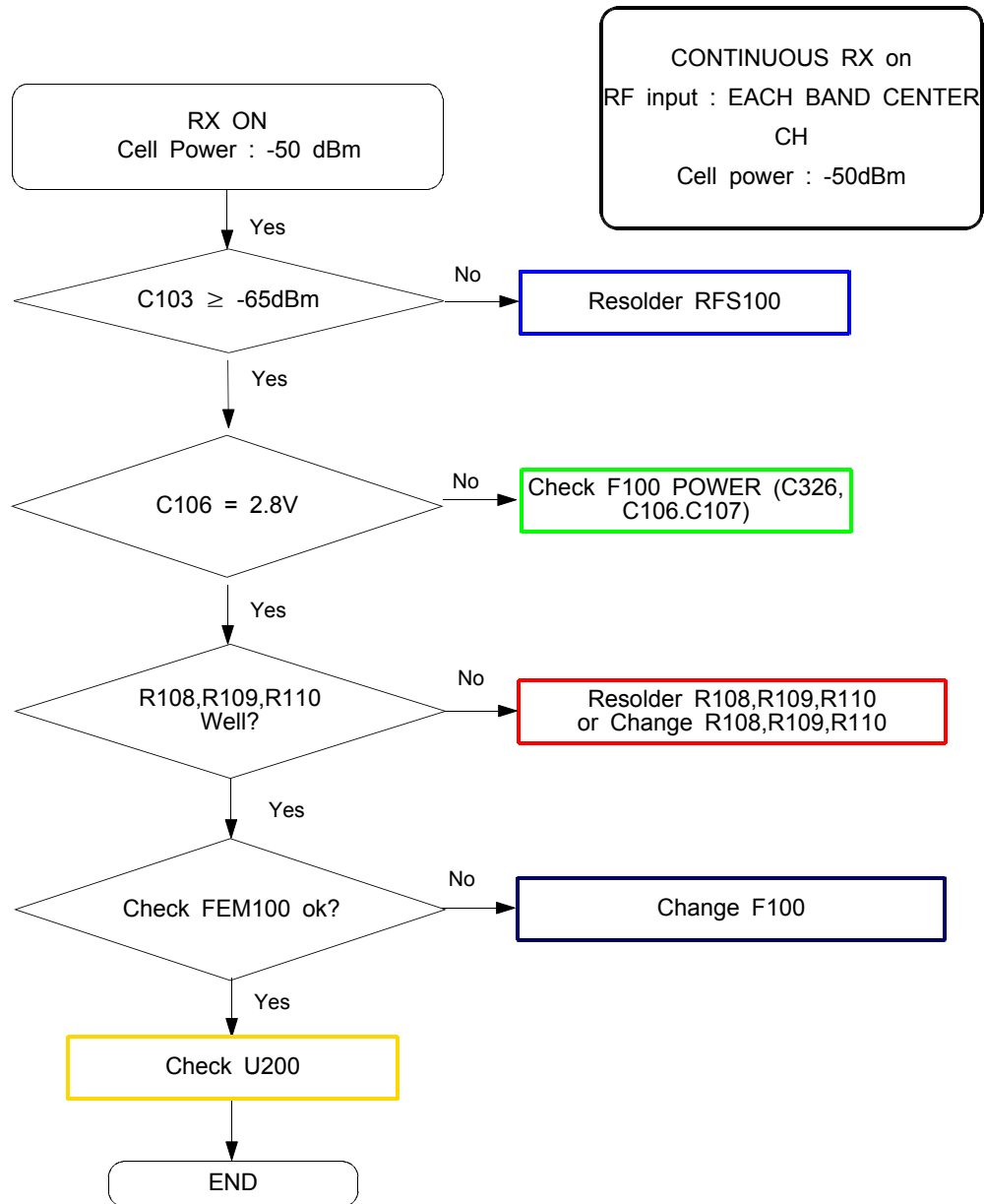


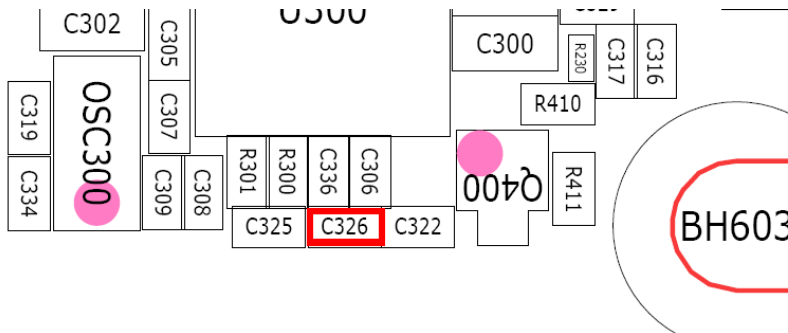
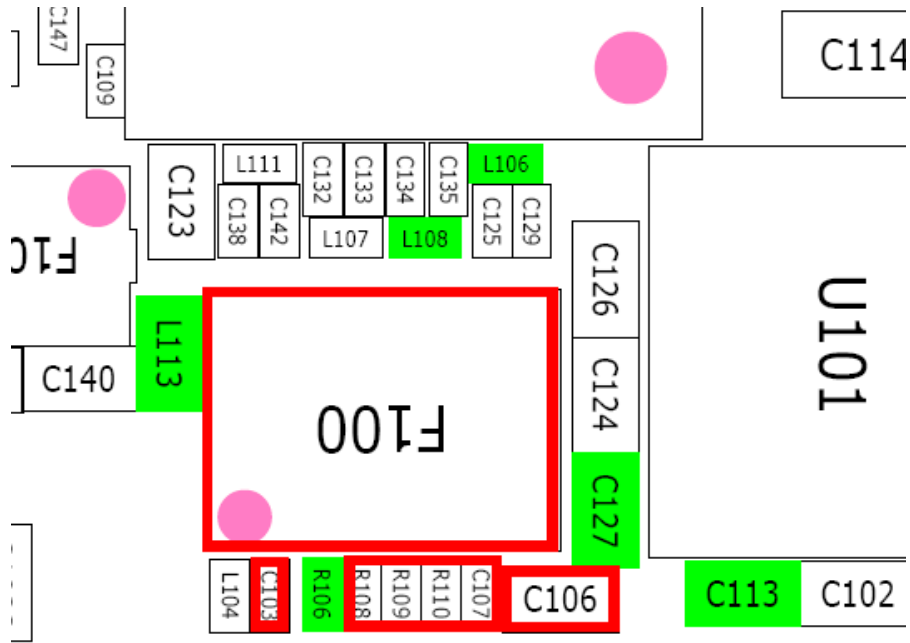
## 9-12. WLAN Part



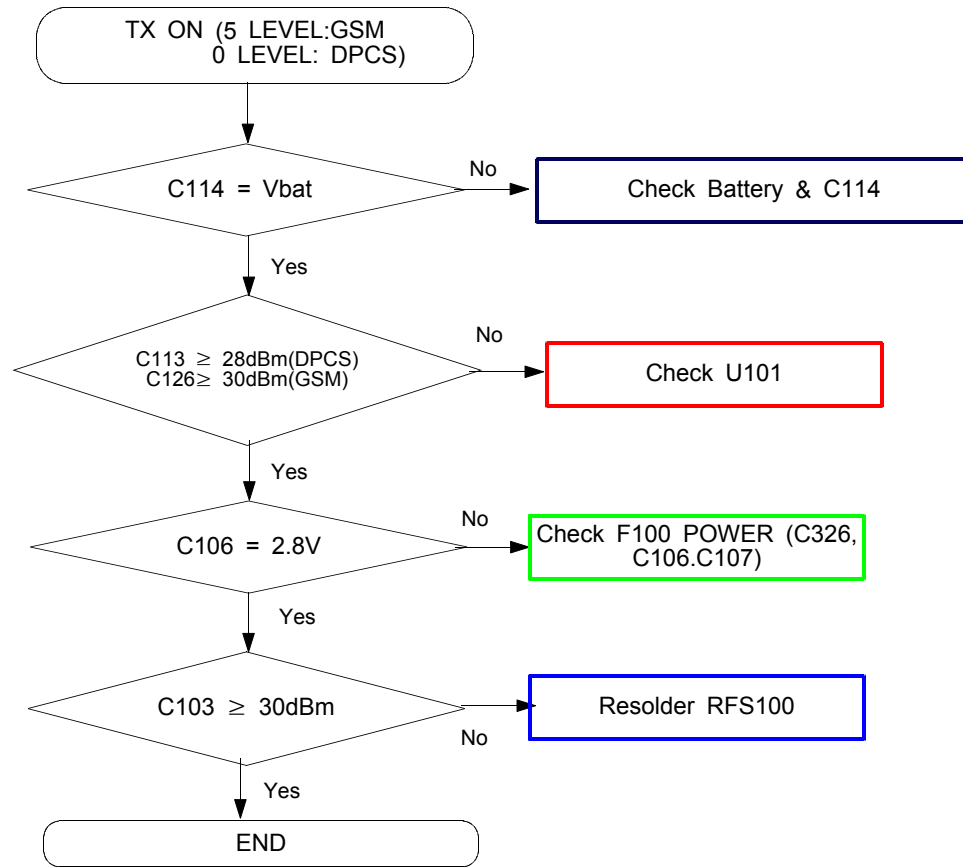


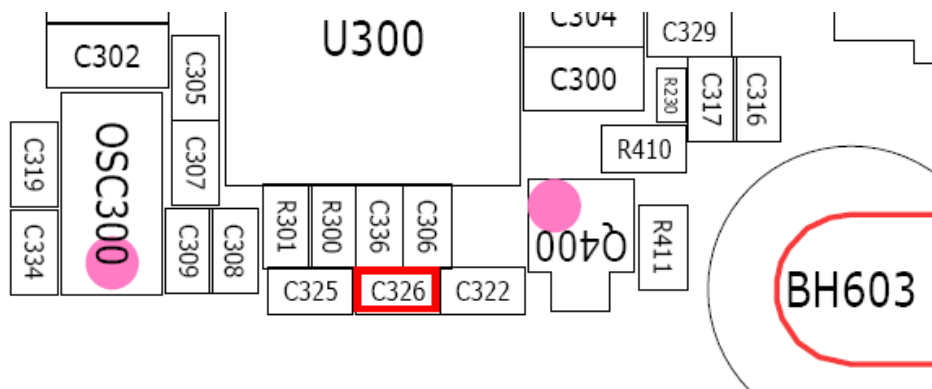
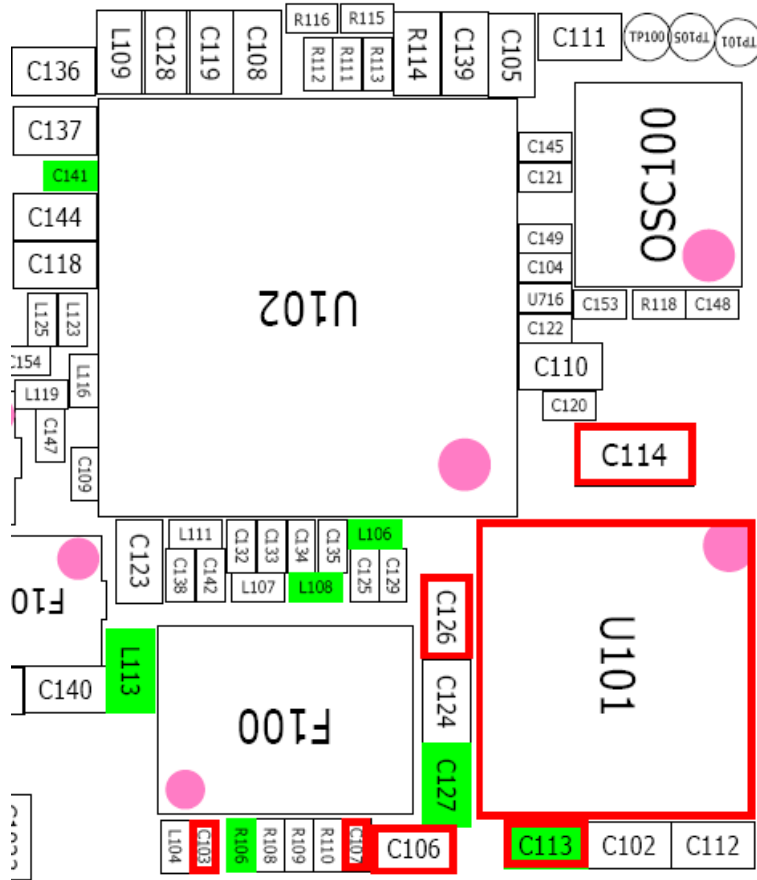
### 13. GSM/DPCS Receiver



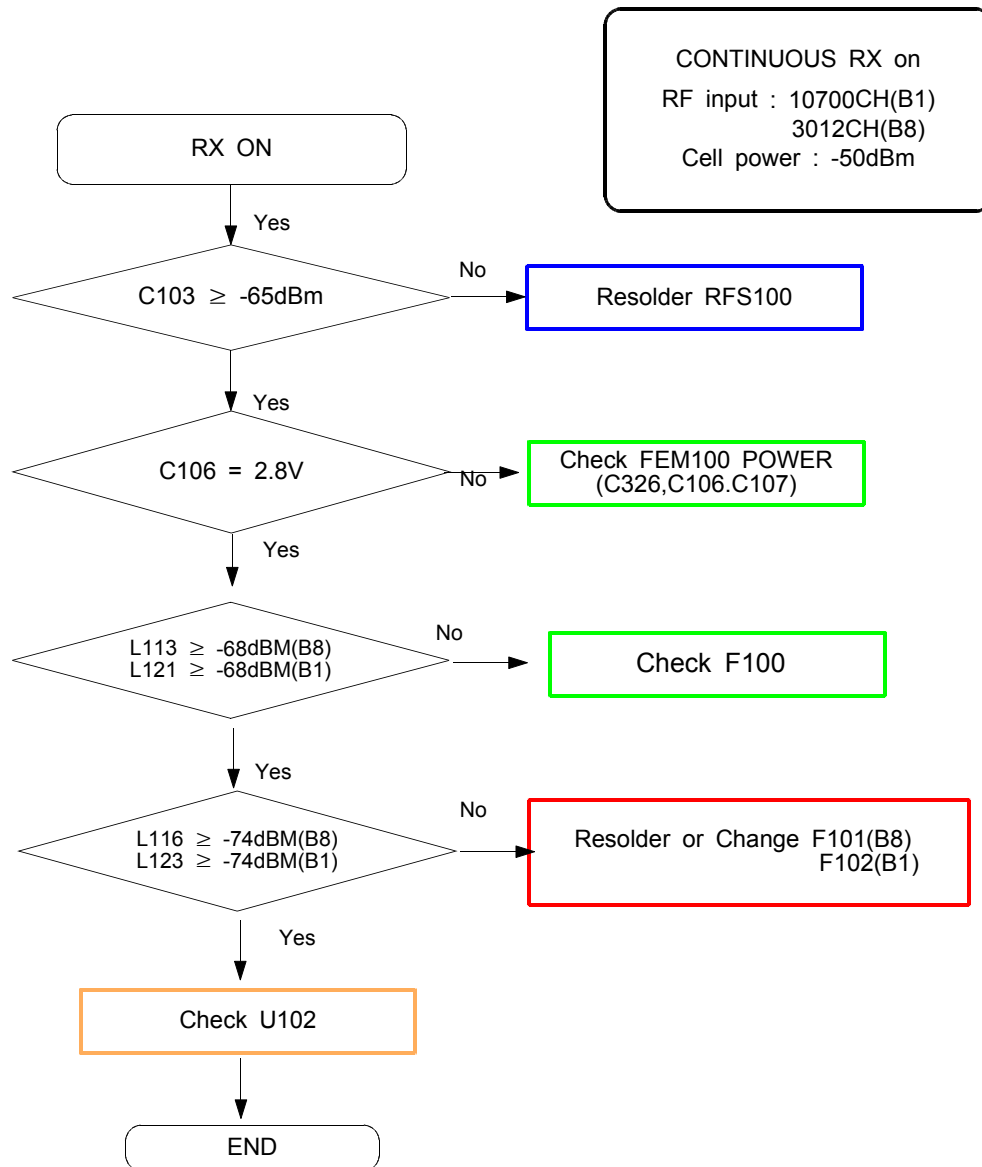


## 9-14 GSM/DPCS Transmitter

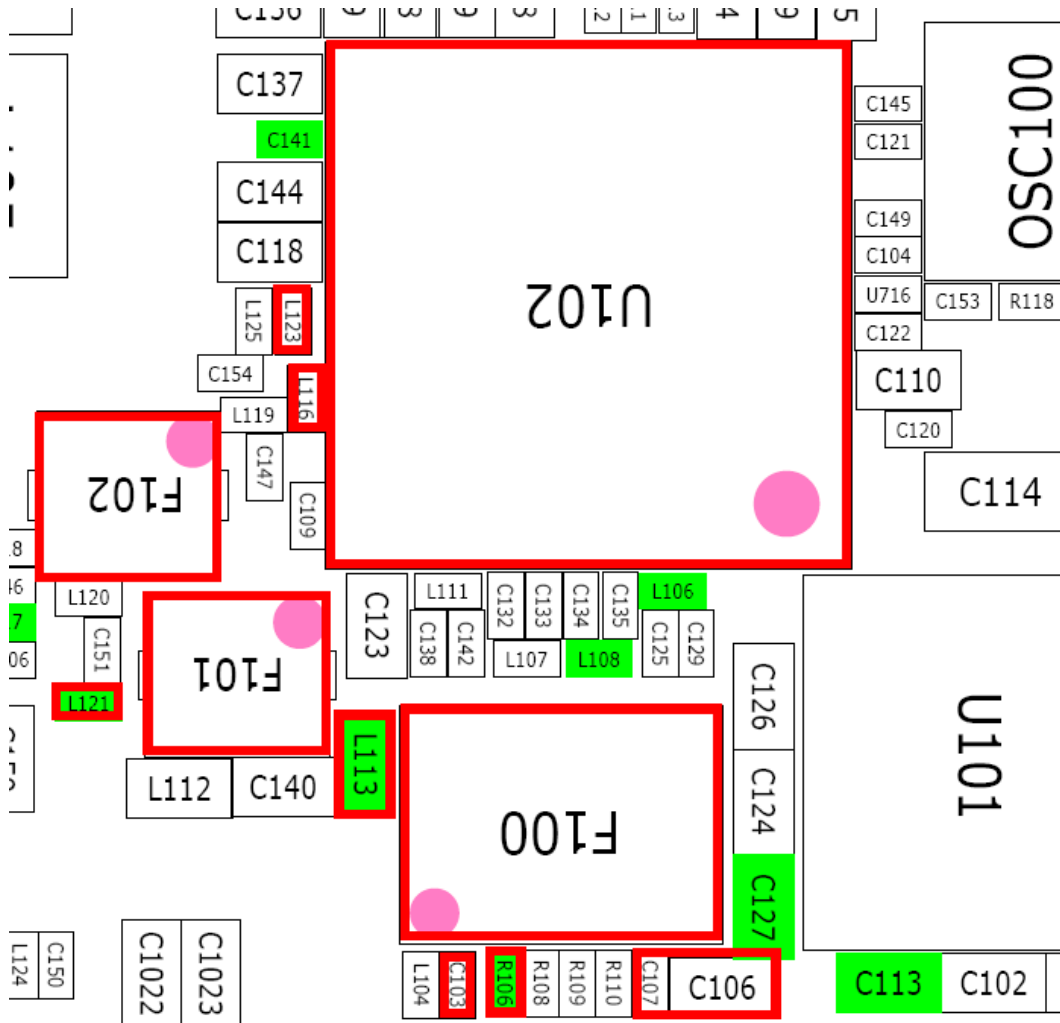


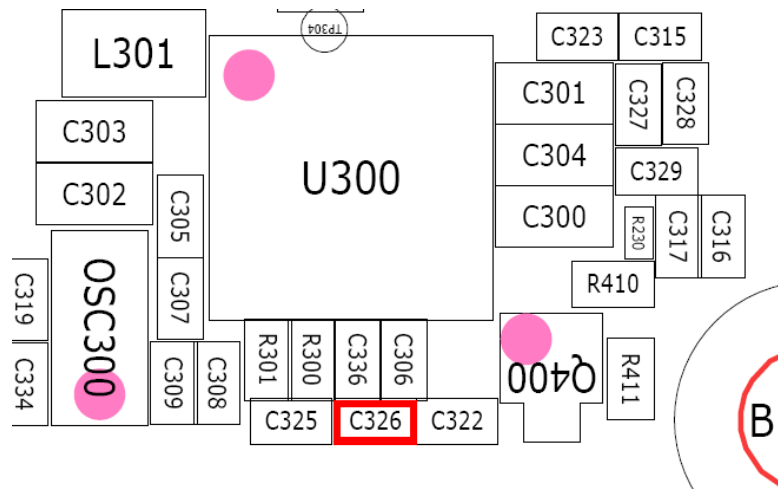


## 9-15. WCDMA Receiver

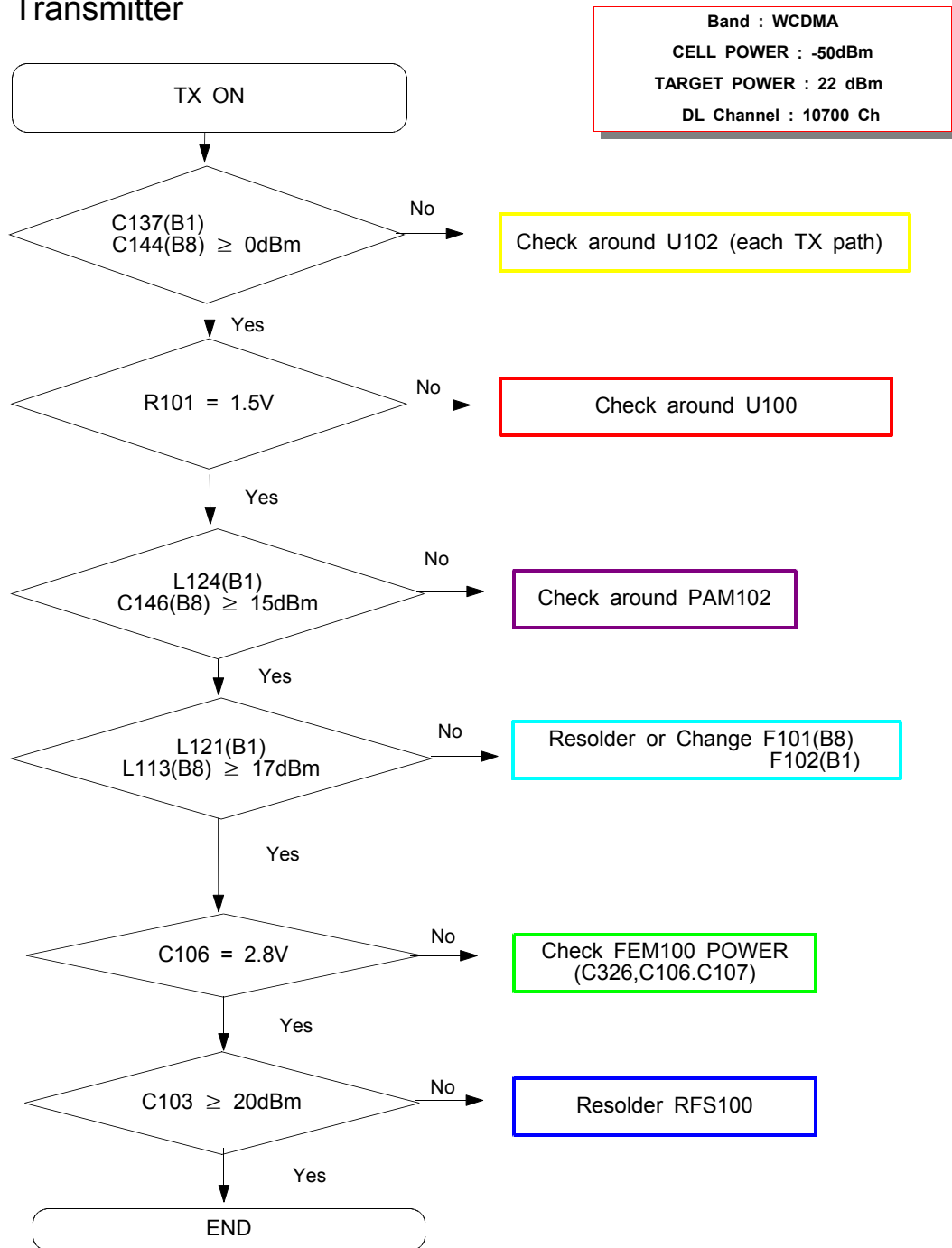


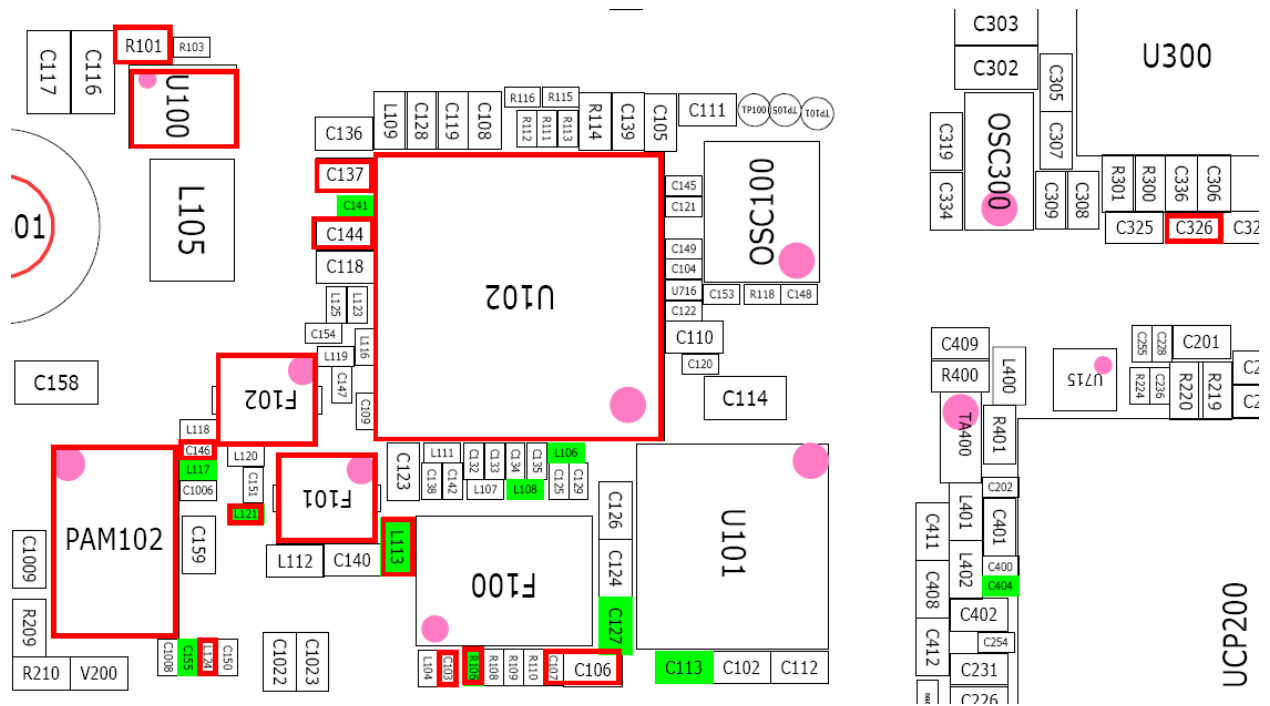




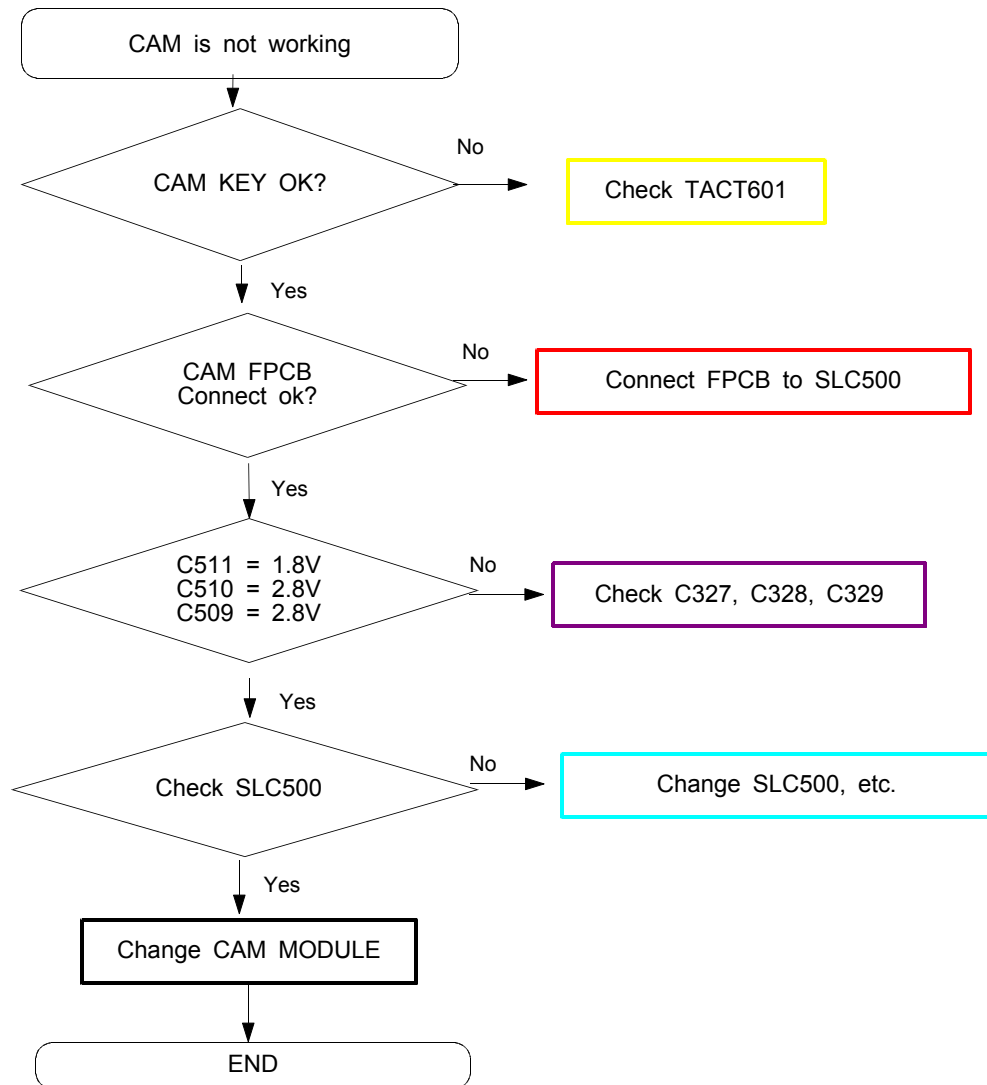


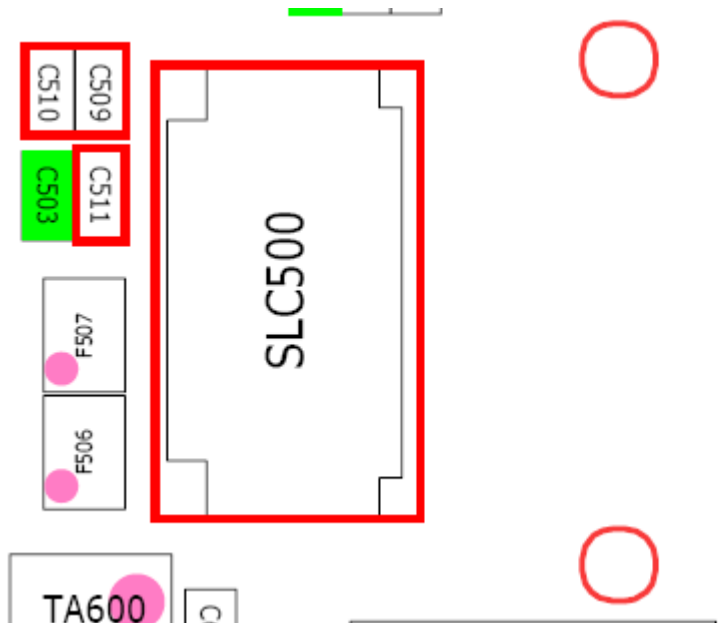
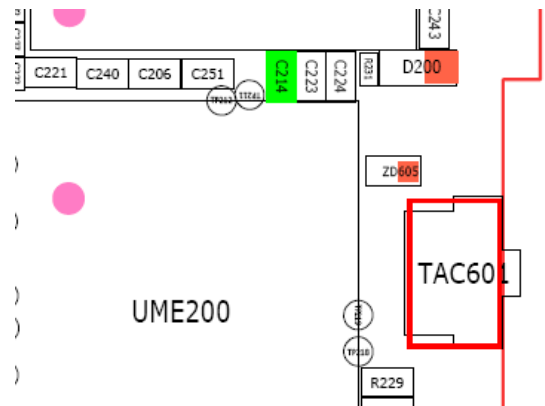
## 9-16. WCDMA Transmitter

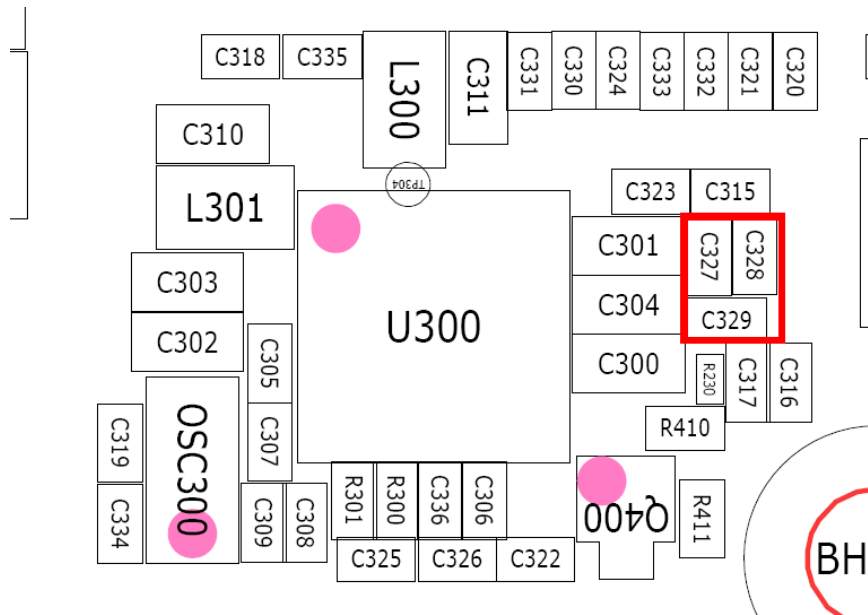




## 9-17. CAMERA

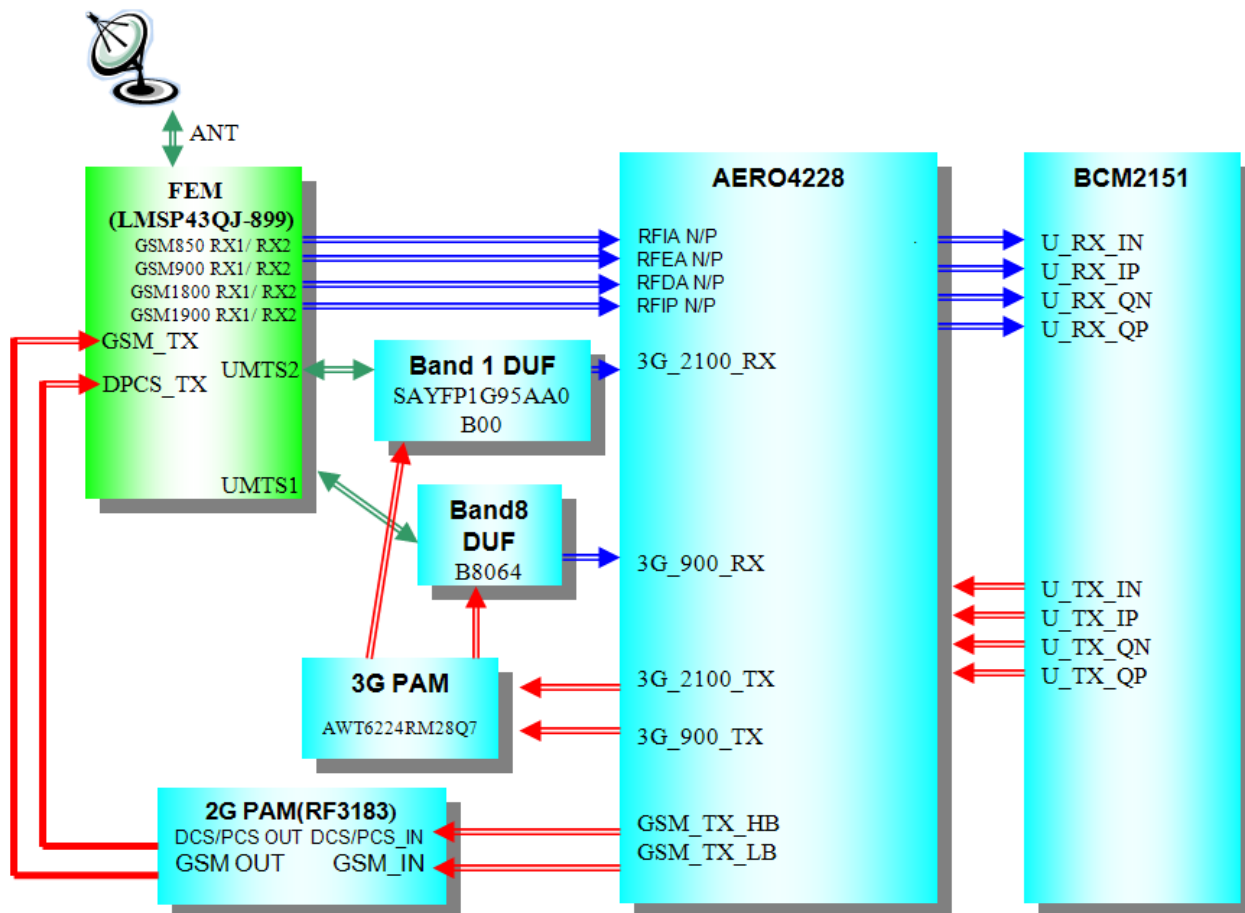






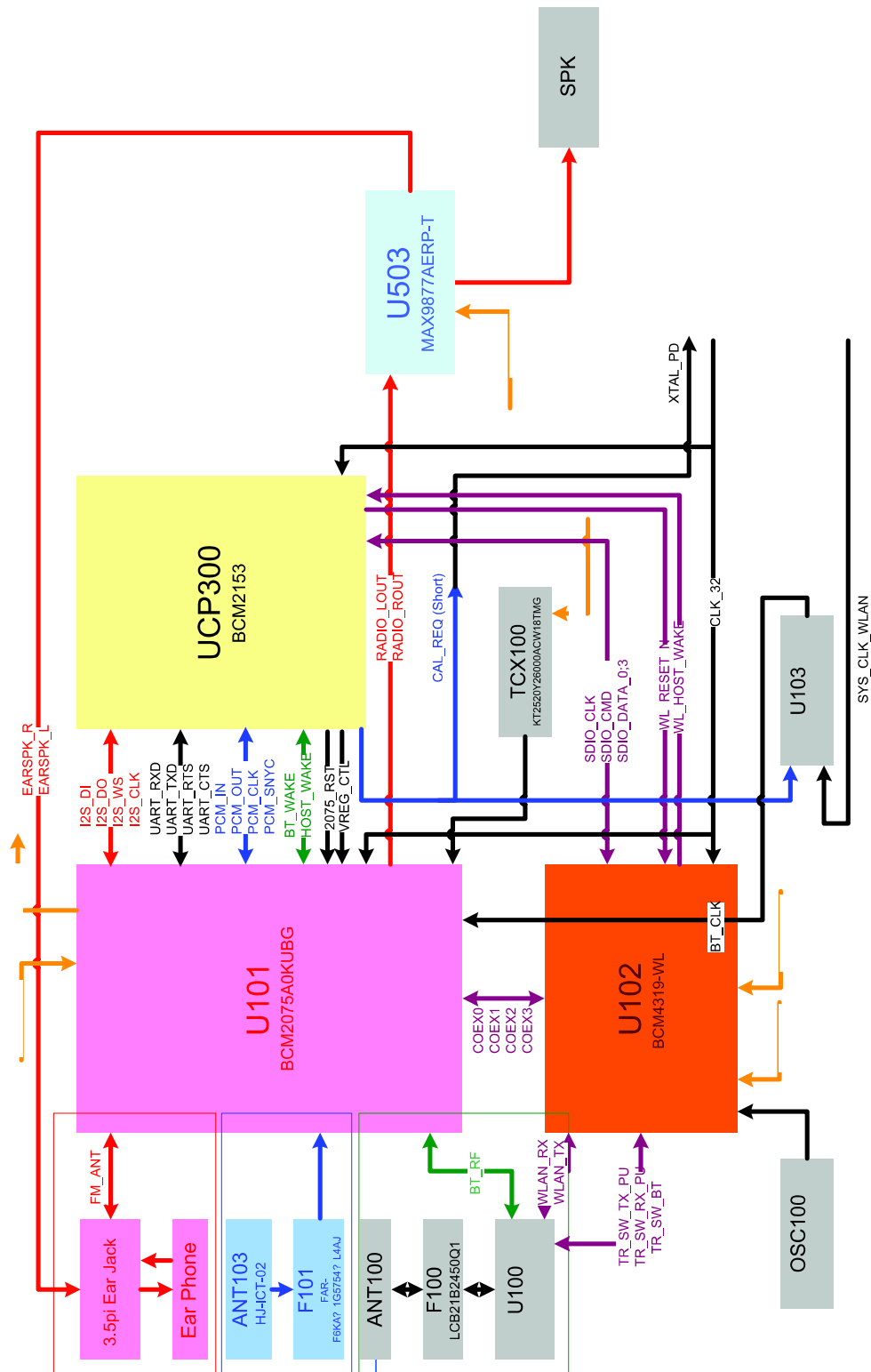
## 7. Block Diagrams

### Main RF Block

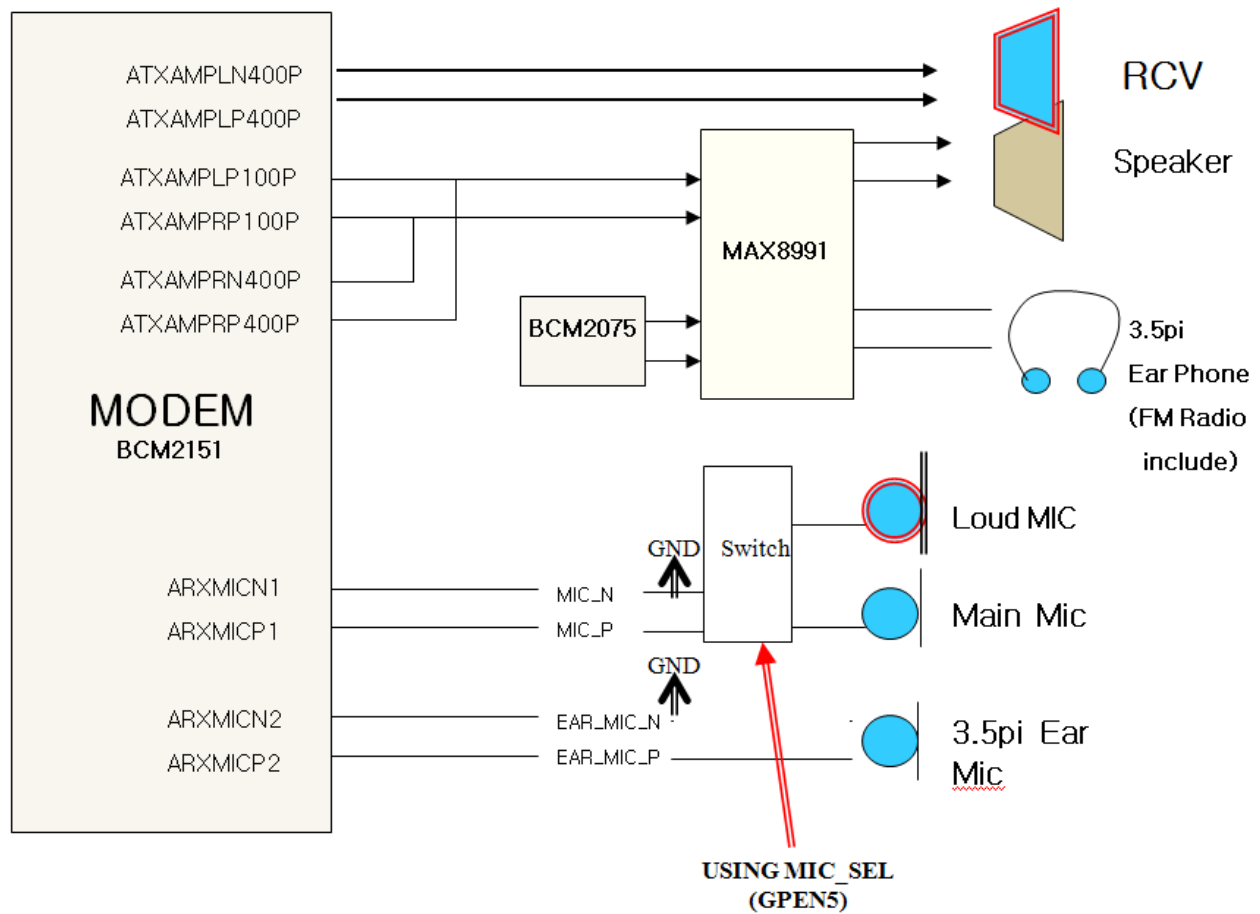




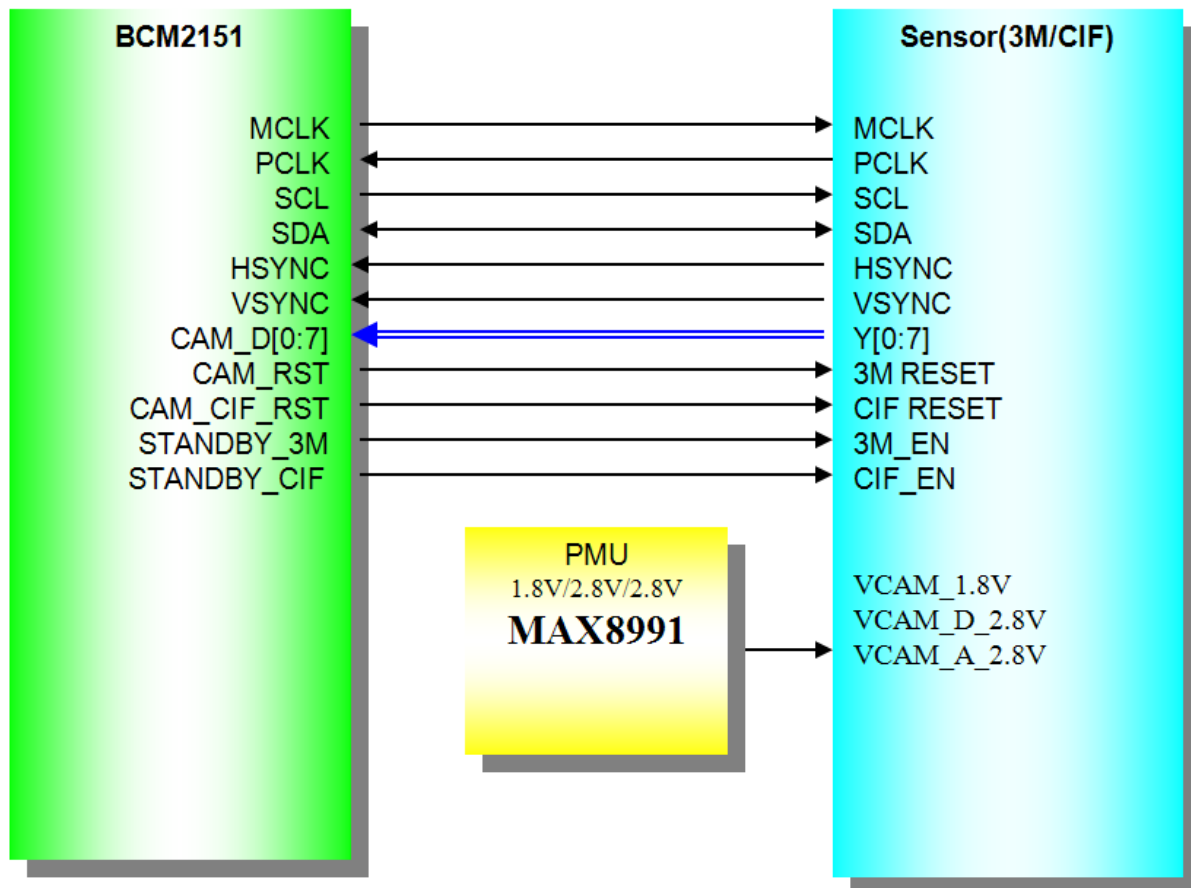
## WLAN, Bluetooth, FM RADIO, GPS Block



## Audio Block

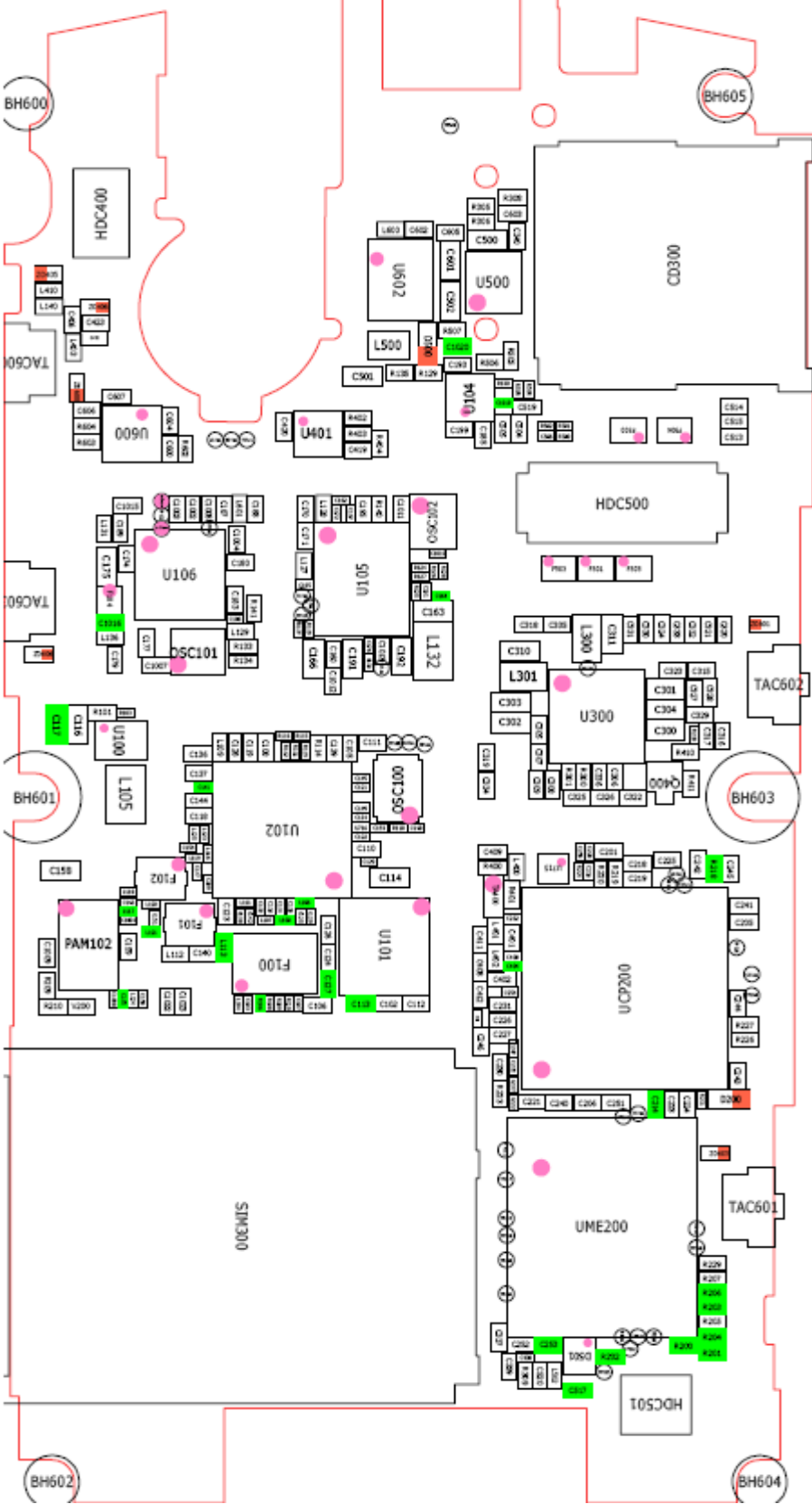


### Camera Block



## 8. PCB Diagrams

## -1. Top



## 8-2. Bottom

